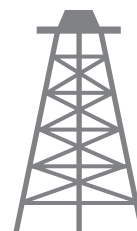




Pacific Petroleum Geology



NEWSLETTER

Pacific Section • American Association of Petroleum Geologists

March & April 2019



**2019 Annual Meeting for
PSAAPG • PSSEPM • PCSSEG
Walter Pyramid at CSU Long Beach
April 1-3, 2019**

www.psaapg.org

THANK-YOU

California Resources Corporation.

For your continued support of local students.
Your sponsorship funded many student dinners
at SJGS scientific talks in 2018-2019.



PAYZONE INC.

Geological, Geophysical, and Petrophysical Consulting Services for the Petroleum Industry 661-387-1715

- Accurate, consistent fieldwide reservoir properties for modeling, OIP, and improved heat management in thermal projects
- Old E-Log interpretation

- Image log interpretation and integration with petrophysical analysis
- 2D/3D seismic interpretation, expertise in old 2D data
- "Mystery logs" and other difficult log problems

Our petrophysical models for siliceous shales and California sands are based on over 30 years of experience with these rocks, including core, log, and lithology data from every basin in the state

Deborah Olson, President
dmolson@payzoneinc.com
661-747-0375

Have a log question? Give us a call!

www.payzoneinc.com

Tom Howard, Image Analyst
tomh@payzoneinc.com
832-407-2862

ROCK SOLID EXPERIENCE



Core Lab
RESERVOIR OPTIMIZATION

www.corelab.com
661-325-5657

© 2013 Core Laboratories.
All rights reserved.

2018-2019 Officers

President	Richard Behl 562-985-5850 Richard.Behl@csulb.edu president@psaapg.org
President-Elect	Becca Schempp 661-412-5101 Becca.Schempp@crc.com president-elect@psaapg.org
Vice President	Mike Clark 661-378-8134 rocksniffer@aol.com vicepresident@psaapg.org
Secretary	Jlynn Bowen 661-665-5281 jmbowen@aeraenergy.com secretary@psaapg.org
Treasurer 2018-2019	Lisa A. Alpert 661- 665-5557 laalpert@aeraenergy.com treasurer@psaapg.org
Treasurer Elect 2018-2019	Simmie Chehal 661- 665-5738 SKChehal2@aeraenergy.com treasurer@psaapg.org
Past President	Mike Nelson 805-535-2058 mnelson@dcorllc.com
Editor-in-Chief 2018-2020	Brandi Johnson 949-735-7998 brandi.johnson@chevron.com editor@psaapg.org

Staff

Web Master	Taylor Carrasco 562-624-3259 Taylor.Carrasco@crc.com
Membership Chair	Simmie Chehal 661- 665-5738 SKChehal2@aeraenergy.com
Publications Chair	Larry Knauer 661-205-4463 laknauer@aol.com
Advisory Council Representative 2018-2021	Anne Draucker 661-654-7454 annedraucker@chevron.com

4	President's Message	<i>Richard Behl</i>
5	In Memoriam	<i>Edward M. Tilbury</i>
6	Convention	<i>Call for Papers & Schedule</i>
7	Convention	<i>Registration</i>
8	Convention	<i>Chair's Welcome</i>
11-13	Convention	<i>Field Trips & Short Course</i>
14	California Well Sample Repository	
15	75th Anniversary of D-Day	

COVER PHOTO: PSAAPG Annual Meeting Logo in front of the iconic Walter Pyramid in Long Beach, California.

PSAAPG Newsletter has now gone DIGITAL!

In an effort to reduce overhead and provide meaningful programs to our membership and the community, PSAAPG has decided to go DIGITAL!

For those members still wanting hard copies of the newsletter, please email **editor@psaapg.org** or write to us at:

Pacific Section AAPG
P.O. Box 1072
Bakersfield, CA, 93302

- CONTACT THE EDITOR at editor@PSAAPG.org
- Images (graphics, photos, and scans) must be at least 300 dpi resolution. Text should be at least 600 dpi.
- Scanned photos, illustrations (line art) or logos should preferably be submitted as a .tif, .gif, or .bmp; jpeg is OK.

Advertising Rates

<i>Members</i>	<i>Single Issue</i>	<i>Year (6 issues)</i>
<i>Full Page</i>	\$200.00	\$800.00
<i>Half Page</i>	\$125.00	\$525.00
<i>Quarter Page</i>	\$75.00	\$325.00
<i>Business Card</i>		\$125.00

Advertisements reduced price by 50%
due to drastic drop in oil prices

Societies Free Advertising:

Convention: Unlimited Space in PSAAPG Newsletter
Societies: 1/4 Page in AAPG Explorer

Dear Pacific Section AAPG Members,

I was recently reminded how serendipitous our opportunities and outlook and understanding can be, and yet, at the same time, require our effort and preparation. Two widely repeated quotes sum this up: "Luck favors the best prepared" and "The best geologist is the one who has seen the most geology". These translate to the fact that new insights come to us when we address a geologic problem (or outcrop) under different conditions, with new features revealed that can be linked to patterns or processes studied elsewhere. These insights frequently arise when someone in a group – who has a different background and experience – asks the perfect question or observes a relationship that had previously escaped us working alone.

This past weekend, Wanjiru Njuguna and I and some of my students walked the Point Dume to Paradise Cove section of the Monterey/Modelo Formation that we will examine on Field Trip #1 of the upcoming PS-AAPG/SEPM/SEG conference. Remember that April 1-3 will be our field-focused conference with 2 included field trips, in addition to a day of technical presentations. We saw a splendid set of exposures, including source rock, 3 kinds of convention reservoir rocks (sandstone, fractured porcelanite and diatomite), diagenetic transitions and an amazing set of structural features, including heterogeneous mechanical stratigraphy. Our fresh observations and conversation led us to propose new ideas about depositional processes and facies relationships that could influence porosity and permeability of reservoir rocks in a hybrid siliciclastic/biosiliceous depositional system. And, although I've been there dozens of times before, the synergy of the participants' breadth of experience and the unique set of conditions (recent storms, shifting sand, new exposures) led us to new ideas! That's why I love field trips.

Likewise, Don Clarke and Dan Schwartz will take us to re-examine classic exposures of the Upper Miocene-Pliocene Capistrano Formation at San Clemente and Dana Point on Field Trip #2. These outcrops have been visited by 100's (1,000's?) of geologic field trips. And yet, new approaches, novel quantitative methods, and application of concepts learned elsewhere extract entirely new insights from these outcrops. Here, the field trip leaders and their scientific colleagues have categorizing channel-stacking patterns and stratal connectivity, unraveled some of the first-order controls like position on a bathymetric profile and relation with synsedimentary faulting, and then connected these new data with their implications for subsurface reservoirs. Again, I've brought my students to these exposures

dozens of times before, but the new observations and interpretations have opened my eyes in a way that I was never able to do by myself.

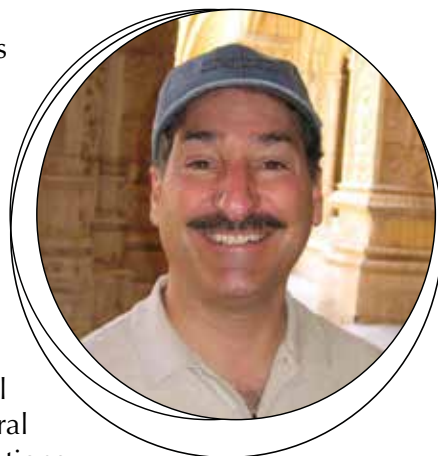
In between the two field trips, we will have a day of oral and poster presentations, including a general and theme session, SEPM, SEG, agency and exhibitor/vendor sessions. The special theme session on "Creativity and Opportunities In West Coast Energy" will build with several talks in each of three subthemes, with the majority of presentations in the third. 1. Creativity and Opportunities for Petroleum Geoscientists (i.e., application of petroleum geology skills, approaches, workflows to other energy or environmental fields); 2. Creativity and Opportunities for the Petroleum Industry (synergies between oil, gas, geothermal, steam solar, geothermal, minerals production and CO₂ sequestration in petroleum operations – "greening of the oil field"); 3. Creativity and Opportunities for Petroleum Exploration and Development (new, missed, underexploited or undertested opportunities in conventional and unconventional petroleum production or how new breakthroughs or revivals in production have occurred in established oil fields in the Pacific Section).

Come join us in Long Beach to reinvigorate your scientific thinking, to share ideas and approaches with your colleagues, to make new acquaintances and reconnect with old friends. The "all-in-one price" for just about the normal conference registration entitles you to two great field trips, professional field guides, a day of innovative technical presentations (oral and posters), dinner and two evening opportunities to mingle, drink and browse the exhibits and posters. And there is much to do for spouses/partners in Long Beach who may not attend the meeting itself. Save your place and register now at <http://2019.psaapgconvention.org>

See you soon!

Richard (Rick) Behl

PSAAPG President, 2018-2019



Edward Mason Tilbury

June 24, 1925 - January 24, 2019

EDWARD MASON TILBURY will be remembered by many for his incredible determination, independent spirit, love of travel and the outdoors, and his enjoyment of socializing and vacationing with friends through relationships he maintained over his lifetime.

Born June 24, 1925, in Littleton, Colorado, to parents Ernest Faulkner Tilbury and Helen Grace Mason, Edward "Ted" was the oldest of four boys. Ted's family moved to Pasadena, California, and there he attended elementary school and high school. Ernest passed away in 1942 when Ted was just 17 years old. From carefree teenage boy to head of the family, he embraced his responsibilities and kept his younger brothers on track until entering the Navy fifteen months later, on June 23, 1943, just one day before his 18th birthday. Ted served in the Asiatic-Pacific Area aboard the USS LST 508, 910 and 397, all tank landing ships. He participated in the Battle of Leyte Gulf, the largest naval battle in world history. Ted enjoyed telling of his experiences on the high seas, as well as reading and watching documentaries on the Military History Channel.



Ted joined General Petroleum as a Petroleum Landman in 1952, with he and Constance moving to Bakersfield. Several years later, Ted left GP to become an independent landman. As an independent, he enjoyed collaborating with geologists in the industry, putting together drilling plays, and promoting oil companies to test the plays. Weathering some lean years early on, Ted achieved success in the oil business, which allowed he and Constance to pursue their love of travel and adventure.

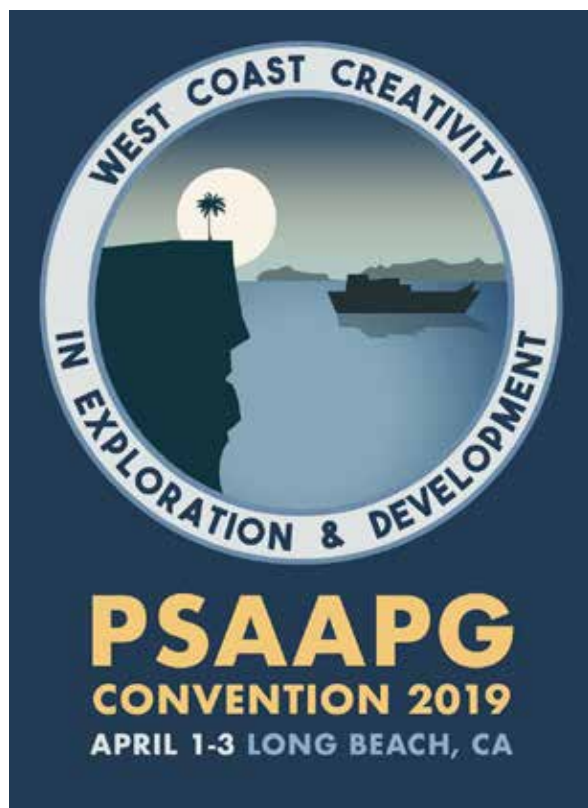
Ted enjoyed a variety of sports, including handball, tennis, golf, bicycling, skiing, fishing, hunting, boating, and backpacking. Ted was most passionate about flying his beloved Beechcraft Bonanza V-tail, which he did well into his 80's. He flew on the roads as well, having way too much fun in his 1966 Shelby GT350 Mustang.

Locally, Ted was very active in the community. He belonged to the Elks Club, the Bakersfield Association of Petroleum Landmen, the San Joaquin Geological Society, and Stockdale Country Club. He was a past member of the 20-30 Club, the Civitan Club, the Sherriff's Search and Rescue Team, and the Kern County Shrine Club.

Edward was predeceased by his wife Constance, his parents, and his three brothers, Gordon, Norman, and David. He is survived by his son Tyler Tilbury (Sandra), his daughter Margo Monroe (Larry), his granddaughters Alexandra and Arianna Tilbury, his grandson Tim Monroe (Katie), and granddaughter Marissa Monroe Curtis (Brian), great grandchildren Jonah Monroe, Gunner Davis, Danica Curtis, and Judy Chase - his companion in later life.

There will be a memorial service at the Bakersfield National Cemetery, located at 30338 East Bear Mountain Blvd., on Friday, February 8th at 10 a.m. In lieu of flowers, contributions can be made to the Edward M. and Constance W. Tilbury Endowment Fund, c/o the Kern Community Foundation, 3300 Truxtun Ave., Suite 220, Bakersfield, CA 93301. This fund was established to benefit the Shriners Hospital for Children in Los Angeles, CA.

West Coast Creativity in Exploration and Development



2019 Annual Pacific Section
AAPG Convention

April 1-3

at the Walter Pyramid,
California State University, Long Beach

Call for Papers

Abstracts due on

March 6th

Visit the website for more details:
2019.psaapgconvention.org

All-Included Combined Field Trips and Technical Sessions!

Monday, April 1

7AM - 5PM: Malibu Coast Monterey/Modelo field trip led by Wanjiru Njuguna & Rick Behl

6PM - 8:30PM: Welcome Opening Session, Posters, Exhibits & Icebreaker

Tuesday, April 2

8:30AM - 5PM: "Creativity and Opportunities In West Coast Energy" technical session
with invited speakers

5PM - 6:30PM: Brew & Browse with posters and exhibits

6:30PM - 8:30PM: All-Conference Awards Dinner

Wednesday, April 3

8AM - 4PM: Southern Los Angeles Basin Deep-water Clastic Reservoirs field trip led by
Dan Schwartz and Don Clarke

Thursday, April 4

8:30AM - 4PM: Short course of Data Analytics in Geosciences

2019 Annual Convention Registration Options

Registration Type	Regular Registration Cost	Details
Professional Member* Early Bird Discount by 3/1/2019	\$350 \$300	INCLUDES BOTH FIELD TRIPS - For PSAAPG, SEG, SEPM, members
Professional Non-Member Early Bird Discount by 3/1/2019	\$400 \$350	INCLUDES BOTH FIELD TRIPS - For attendees not members of PSAAPG, SEG, SEPM
Student	\$150	INCLUDES BOTH FIELD TRIPS - Full access to convention for members with "student" status
Field Trip 1 only	\$200	Access only to the Monday Field Trip
Field Trip 2 only	\$200	Access only to the Wednesday Field Trip
Tuesday Only Professional (technical session, cocktail hour & dinner)	\$200	Full, one day access to members and non-members
Evening Event Only Guest (icebreaker, cocktail hour & conference dinner)	\$100	For guests of registered attendees; No access to sessions
Emeritus discount**	-25%	Full access to convention for members with "Emeritus" status
Short Course only - Professional	\$300	Requires separate enrollment from convention (Not included in \$400, \$350 or \$300 registration fees)
Short Course only - Students	\$100	Requires separate enrollment from convention (Not included in student \$100 registration fee)

*You can become a PSAAPG Member and enjoy all the benefits of a professional membership by visiting the PSAAPG website here (\$12 annual membership fee).

****Professional Emeritus registrants receive a 25% discount. An Emeritus Member must have at least 30 years of professional membership in AAPG and be at least 65 years old. Please use the code EMERITUS to reduce your registration fee.**



Welcome Letter from the Convention Chair & PSAAPG President

- Richard "Rick" Behl

I am very excited to invite you to the 2019 Pacific Section AAPG Convention to be held in Long Beach, California at the Pointe Conference Center in the Walter Pyramid on the campus of California State University. Our host is the Los Angeles Basin Geological Society, along with our Pacific Section SEPM and Pacific Coast Section SEG partners. Our theme is: "West Coast Creativity in Exploration and Development." We are excited to present a new format and focus that we hope will stimulate your own creativity and success. This will be a field-based conference with a focused theme for one main technical session, as well as parallel oral and poster sessions for other technical aspects of petroleum-related and sedimentary geology. Two stimulating field trips, social hours, and the All-Conference Awards dinner will be included with registration. We'll see you in April!

Third Edition Now Available

***Geologic Guidebook to the
Long Valley-Mono Craters
Region of Eastern California***

by Steven R. Lipshie

**397 + xxviii pages, with 136 figures
(91 in color), 11 tables, and 13 stop
location maps (in color)**

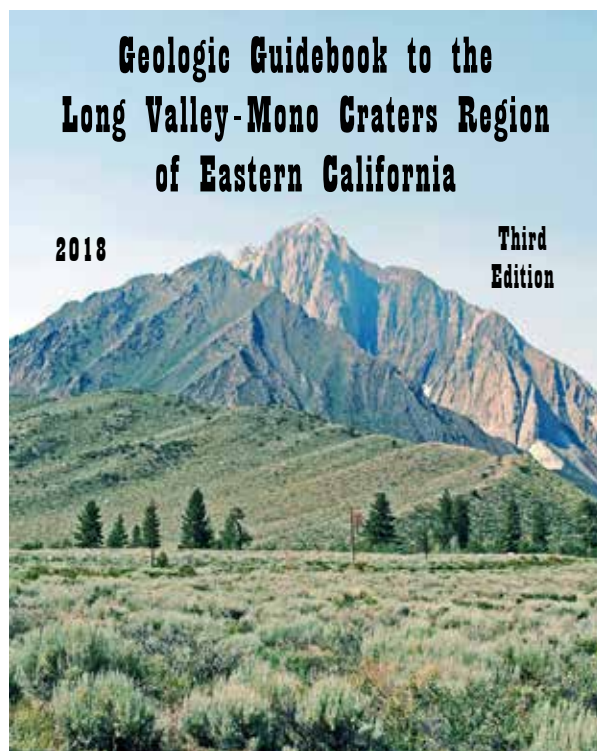
Price: \$50 plus shipping

To order, contact:

Geological Society of Nevada

email: gsn@gsnv.org

phone: (775) 323-3500



Geological Society of Nevada

PSAAPG Membership Directory

The PSAAPG website will have a members-only password-protected membership directory available as of March 1, 2018

Please email SKChehal2@aeraenergy.com if you do not want your name listed. There will also be a checkbox for this on the PSAAPG membership renewal form that goes out before the end of this year.

GREGORY GEOLOGICAL SERVICES

Glenn J. Gregory

Calif. Prof. Geol. #3676

8804 O'Meara Ct.
Bakersfield, CA 93311

(661) 747-5065

glenng@bak.rr.com



GEOLOGICAL LOGGING INC.
9229 Beatty Drive, Suite B
Sacramento, CA 95826
(916) 452-9570 Tel
(408) 307-4653 Cell
(916) 452-9573 Fax
david@geologinc.net

DAVID BURROUGHS
President

www.geologinc.net

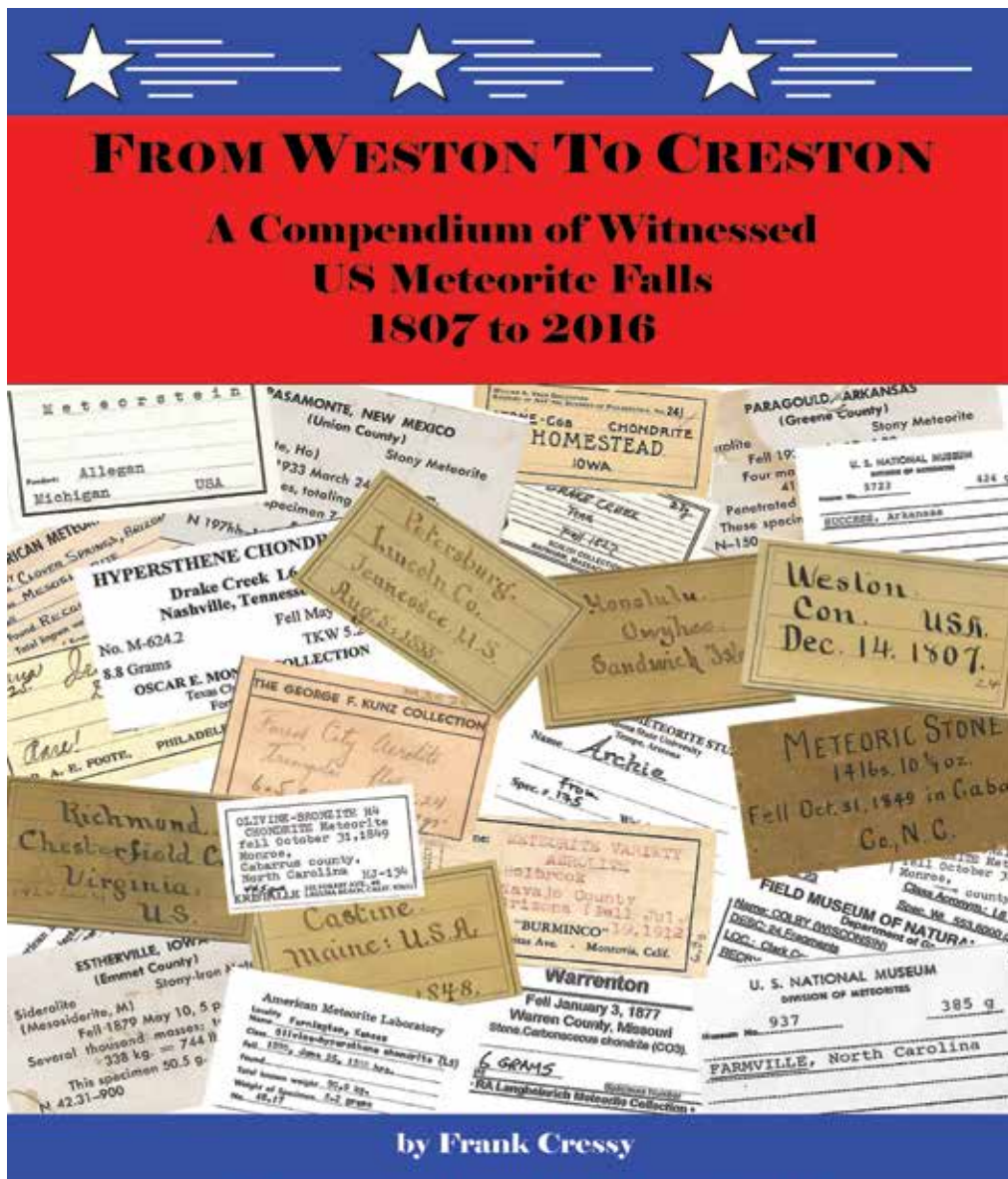
New Publication

“FROM WESTON TO CRESTON – A Compendium of Witnessed US Meteorite Falls – 1807 to 2016”

by Frank Cressy

The violent display of blazing light and explosive sounds ending with meteorites crashing to the ground is an unforgettable event to those who witness it firsthand. This book summarizes the fall histories of nearly 170 witnessed meteorite falls that have occurred in the United States since the first documented fall at Weston, Connecticut in 1807. It is written not only for the collector of these rare objects, but also for those interested in the history and the growth of the branch of science known as Meteoritics. The accounts of the fall phenomena and recoveries associated with these extraordinary events are the focus of the book. However, the book is more. The reader will learn about those individuals responsible for the growth of the science and their contributions, together with interesting facts and coincidences about these visitors from space; 257 pages with over 300 color photos plus maps, figures and illustrations.

Soft Cover books \$36.00; for ordering, contact: fcressy@prodigy.net



Field Trip #1: Monday, April 1, 2019

Mixed Silicilcastic-Siliceous Succession, Miocene Monterey/Modelo Formation, Northern Los Angeles/Santa Monica Basin, Malibu, California

Leaders:

Wanjiru Njuguna - Southern California Gas Company

Rick Behl - California State University Long Beach

The Los Angeles basin is thought to be the most productive petroleum province in the world per volume of sediment fill. In spite of being the primary source and a principal reservoir, the Miocene Monterey Formation and its lithostratigraphic equivalents in the Modelo and Puente formations have been little studied in this basin. This field trip will examine a beautifully exposed ~750 meter-thick (~2500') section of the Miocene Monterey/Modelo between Point Dume and Paradise Cove in Malibu Beach. The stratigraphic section is subdivided into four lithostratigraphic members: the Dolomitic Phosphatic Shale Member, the Porcelanite and Shale Member, the Mixed Clastics Member and the Cherty Diatomite Member that show some similarity to Monterey members in the well studied distal basins (e.g., Santa Barbara, Santa Maria). These members provide interbedded and interrelated source rock and several types of potential reservoir rocks – fractured porcelanite, highly porous diatomite and high permeability sandstone strata that were deposited and diagenetically altered in a series of depositional environments on the fringe of a submarine fan system. TOC values in the Dolomitic Phosphatic Shale range from 4.2 to 7.5%. In this outcrop section, siliceous sediments are either in opal-A diatomite and diatomaceous mudstone or in opal-CT-phase chert and porcelanite. Rocks showing a complete diagenesis to quartz phase silica (with the associated higher permeability of quartz porcelanites) are not exposed in the section, but are likely to exist in more deeply buried sections in the subsurface offshore and in the more proximal basin. The Point Dume-Paradise Cove succession in Malibu Beach, along with more highly weathered exposures in Palos Verdes and Newport Beach, are the best analogs for the Monterey Formation in the Los Angeles basin and Inner Southern California Continental Borderland.

Field trip #1 will depart at 7 AM from in front of the Walter Pyramid.

Please arrive in time to sign waivers and receive guidebook and lunch.

Field Trip #2: Wednesday, April 3, 2019

Proximal and medial deep water channel deposits of the Mio-Pliocene (Neogene) Capistrano Formation of Orange County, California

Leaders:

Don Clarke - Geological Consultant

Dan Schwartz - Daniel E. Schwartz, LLC

San Clemente and Dana Point are world class exposures of clastic rocks that are excellent analogs to California oil reservoirs. The geologist can observe the cliffs from close up and from a distance in three dimensions. There are many diagnostic depositional features that will fuel discussions on oil reservoirs. These two locations bring the geologist right into the reservoir.

The Capistrano Formation (Neogene age) of Southern California contains deepwater clastic sedimentary facies deposited in proximal and medial channel settings. The outcrops at Dana Point Harbor, Dana Point, Orange County, California consist of five channel elements deposited within a proximal fault bounded submarine canyon in a lateral shifting and vertical aggrading sequence. Heterolithic units consisting of debris-flow transported breccia interbedded with traction-flow transported pebbly sand and sandstone deposits that overlie slope mudstones and sand injectites. Breccia consist mainly of angular clasts of siliceous (Opal-CT phase) mid-to-late Miocene Monterey Formation that was transported 7.5 to 13.5 kilometers down the proto-San Juan Creek channel system. Traction deposits consisting of Mesozoic to middle Miocene clasts were transported 13.5 to 40 kilometers down the proto-San Juan Creek channel system. The complex nature of the units and variability of clast types enables discrimination of slope failure from continuous discharge channel-transport events.

The Capistrano Formation at San Clemente State Beach, Orange County, California was deposited in a medial submarine fan setting and is dominated by traction and grain-flow deposits with common turbidites. The outcrops enable the observation of erosive channel flanks, the vertical stacking of side channel bar-elements, and lateral shifting of channel bar complexes with well-developed mudstone drapes separating bar complex units with erosion surfaces below the mud drape. There are two main outcrop locations; the southern location south and north of the San Clemente State Beach parking lot, and the second outcrop approximately two kilometers to the north, near the San Clemente Pier. The two outcrops are separated by a Capistrano Formation slope mudstone mound. The two outcrop locations may be part of a single channel meander bend. Both outcrop sections have ten channel elements. The northern section was deposited from north to south and the southern section from south to north. The San Clemente State Beach units enable observation small scale elements associated with depositional sequences and vertical and lateral flow barriers; as well as larger scale features associated with channel shifting and overall channel complex geometry.

Short Course: 8:00am - 5:00pm

Thursday, April 4, 2019

Cost: \$300 for Professionals; \$100 for Students

Applications of Data Analytics and Machine Learning in Petroleum Geoscience

Instructors:

Shuvajit Bhattacharya, PhD - University of Alaska, Anchorage

Haibin Di, PhD - Schlumberger

Summary

This course will provide a short, yet thorough, understanding of multivariate statistics and machine learning, and their applications in petroleum geosciences. Examples will cover various conventional and unconventional reservoirs, utilizing common and advanced well logs, and seismic data. Topics that will be covered include the following:

1. What is data analytics? Why should geoscientists care about it?
2. Geologic data types and dimensionality
3. Basic statistical measures (e.g. mean, standard deviation, and correlation coefficient etc.) for data visualization and analysis
4. What are machine learning and deep learning? Fundamentals of popular machine learning and deep learning algorithms (e.g. Multi-layer Perceptron and Convolutional Neural Network)
5. Working principles of supervised and unsupervised classification and regression techniques, and their utilities in constructing 3D facies, fault, and reservoir property models.

California Well Sample Repository



This photograph was taken circa 1990 in front of the California Well Sample Repository (CWSR) located on the campus of Cal State University Bakersfield.

The photograph includes three of the four men who were responsible for arranging to have the CWSR built in 1975 (Professor Jack Coash, H. Victor Church, and Jim Weddle; The fourth man involved not shown here was Ed Sprottee). From the beginning Marie Covin assisted Prof. Coash with book keeping and other duties for the CWSR as she was already working for him in the Geology Department.

Buddy Wylie with Santa Fe Energy, Mike Clark with Arco Oil & Gas and Charles James with Shell Oil were supporters of the facility. Charles has been the Curator for the CWSR for a number of years.

The man third from the left in the back row has not been identified. If you know him, please reach out to any of the committee and let us know.

The man that is third from the right in the back row is Russ Robinson, the Curator for the CWSR at that time.



The 75th Anniversary of D-Day Electronic Field Trip

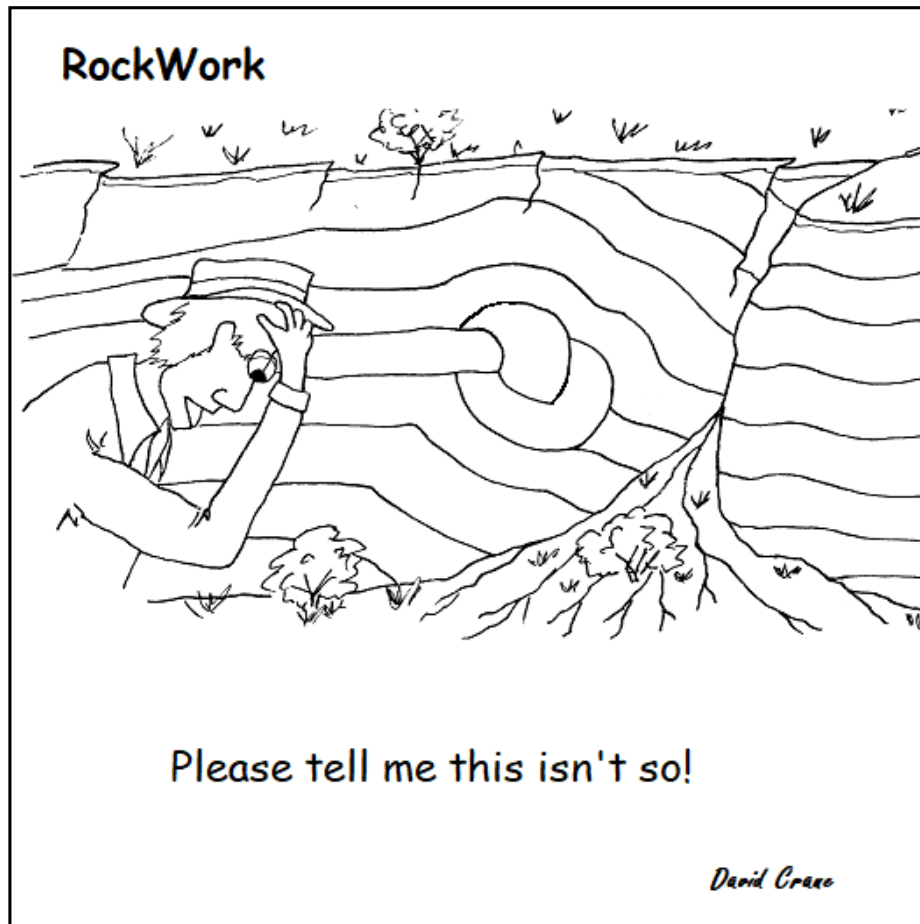
Thursday, May 2

Cost: Free

On May 2, 2019, The National WWII Museum will stream a live interactive journey into D-Day, the largest amphibious invasion in history and a turning point in World War II. Guided by student reporters, classrooms around the world will embark on a virtual transatlantic adventure to discover the lessons and legacies of Operation Overlord, the code name for the massive Allied invasion of Normandy, France, on June 6, 1944.

The 75th Anniversary of D-Day Electronic Field Trip is presented by The Cain Foundation in Honor of the Men of the 30th Infantry Division and all WWII Veterans, with additional support provided by The Lupo Family Charitable Fund and The Dale E. and Janice Davis Johnston Family Foundation in honor of Dr. Earle Richard Davis and his WWII service on the USS *Tranquillity*, Pacific.

Learn more and register to view at **www.nationalww2museum.org**



JeffSande@bak.rr.com

SANDE OIL FIELD GEOLOGY
Get things done. Make more oil.

JEFF SANDE
Oil Field Geology Consultant

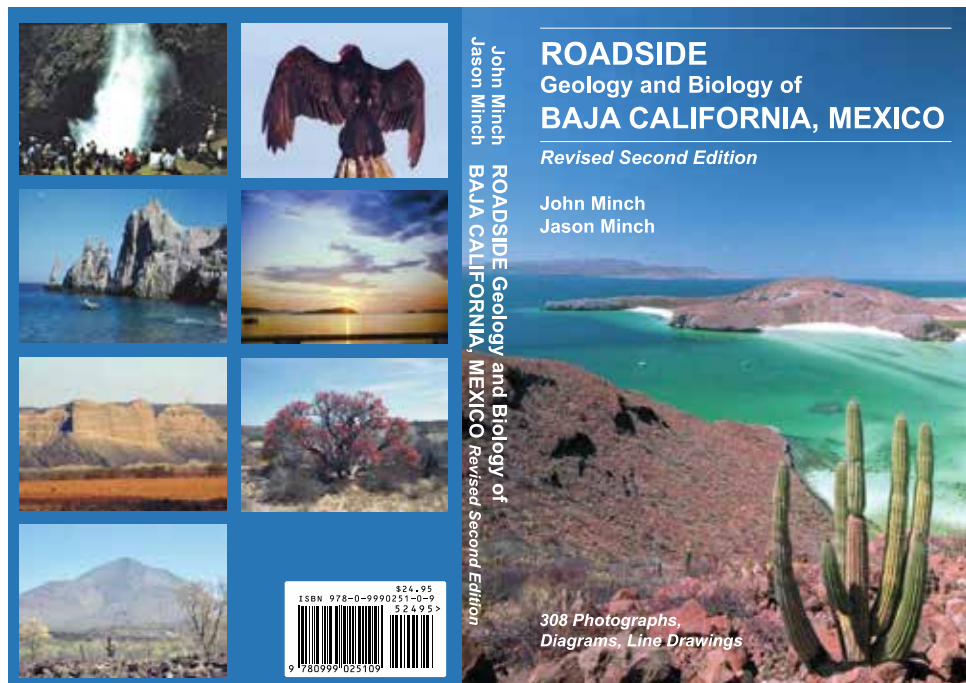
California Professional Geologist #9689
Bakersfield, CA 661-209-7859

Let my 33+ yrs of California oil field experience help you with:

- Reservoir Description
- Oil/Gas In Place Determination
- Development Plans; Drilling Programs; Secondary and Enhanced Recovery Programs
- Reservoir Surveillance and Project Optimization
- Permitting Support
- Acquisitions and Divestiture Support

California Professional Geologist #9689

SANDE OIL FIELD GEOLOGY



Roadside Geology and Biology of Baja California

John Minch and Jason Minch

Second Edition, completely updated and revised - Over 300 color photos, sketches, and drawings, 6x9, full color, 288 pages, Includes Rock charts, Geologic time scale, References, Glossary, Index

Introductory Meeting Sale Price
\$20 cash

or check made out to "John Minch Publishing"

\$24.95 + tax and shipping

For more information go to www.johnminchbajabooks.com

Distributed through Sunbelt Publications in El Cajon, CA

HOME MOVIES TO DVD,
PHOTO GIFTS, RESTORATIONS
& MORE

digital creations

1705 20th St.
(661) 322-5552
digitalcr1@gmail.com



like us on facebook
digitalcreations.bakersfield

Retirement Planning
College Savings Plans
Financial Planning

Morgan Stanley

[The Hopps Group](#) Lydia Hopps & Benjamin Hopps CFP®

Investment Management Consultant
Senior Vice President
Financial Advisor
300 Esplanade Dr., 10th Floor
Oxnard, CA 93036
1 805 278-3609

www.morganstanleyfa.com/thehoppsgroup/

© 2014 Morgan Stanley Smith Barney LLC. Member SIPC.
CRC897562 03/14

Alaska Geological Society

March 14th - AGS

Speaker: Rob Witter, USGS

Talk: Ground Failures Induced by Seismic Shaking During the 2018 Anchorage, Alaska M7 Earthquake

May 21st - AGS

Speaker: Joint presentation, Shuvajit Bhattacharya (UAA Geophysics), Machine Learning Using Alaskan

Talk: Geophysical Data

March 14th - AGS

Talk: TBD: Geological/technical presentation from Pebble Partnership or Greg Wilson (ConocoPhillips)

Northern California Geological Society

March 27th

Speaker: Dr. Sara Kelly McBride — United States Geological Survey

Talk: Science to Emergency Management Response: Kaikoura New Zealand Earthquakes 2016

April 24th

Speaker: Dr. Owen Anfinson (tentative) — Sonoma State University

Talk: Using detrital zircon to reconstruct the origin of Salinian Block

Northern California Geological Society

March 12th

Speakers: Richard Behl, James Kennett, Walter Dean, Christopher Sorlien, and Craig Nicholson

Talk: The Santa Barbara Record of Two Volcanic Winters Triggered by Twin Yellowstone Supervolcano Eruptions
631,000 years ago

PSAAPG Needs a Webmaster

If you have interest in communications, social media and outreach, please contact us. This is an excellent way to provide an important professional service to your Society.

Current Webmaster, Taylor Carrasco, and Vice President, Mike Clark, will provide guidance, but having previous website construction experience is a tremendous plus!

For questions or to volunteer, please contact PSAAPG Executive Committee Officers:

President, Rick Behl - President@psaapg.org

VP, Mike Clark - vicePresident@psaapg.org

Alaska Geological Society

www.alaskageology.org

P. O. Box 101288
Anchorage, AK 99510

Contact: Keith Torrance
ktorrance@gci.net



Geology meetings/talks are held monthly September through May, usually on the third Thursday of the month, at the BP Energy Center (1014 Energy Court) from 11:30 am to 1:00 pm. Open To The Public. No Charge to Attend.

President:	Art Banet	banetak@gci.net
President-Elect:	Steve Carhart	steve_carhart@hotmail.com
Vice-President:	Dominic Armitage	dom.armitage@gmail.com
Secretary:	Keith Torrance	ktorrance@gci.net
Treasurer:	Holly Fair	holly.fair@alaska.gov
Past-President:	Larry Smith	Ljsmithak@gmail.com

Coast Geological Society

www.coastgeologicalsociety.org

P. O. Box 3055
Ventura, CA 93006

Contact: Eric White
805-628-2312



Dinner meetings are held monthly September through May, on the third Tuesday of the month, at Poinsettia Pavilion, 3451 Foothill Road in Ventura. Social hour starts at 6:00 p.m., dinner is served at 7:00 p.m., and the talk starts at 8:00 p.m. The cost of dinner with reservations is \$20 (members), \$25 (non-members), or \$10 (students and K-12 teachers). For reservations, please email Shelby Fredrickson (secretary@coastgeologicalsociety.org), and should be made by 4:00 p.m. on the Friday before the meeting.

President:	Eric White	president@coastgeologicalsociety.org
Past President:	Theresa Heirshberg	pastpresident@coastgeologicalsociety.org
Vice President:	Shelby Fredrickson	vicepresident@coastgeologicalsociety.org
Secretary:	Renee Richards	secretary@coastgeologicalsociety.org
Treasurer:	John Abeid	treasurer@coastgeologicalsociety.org
Membership chair:	Bonnie Walters	membership@coastgeologicalsociety.org
Webmaster/Tech Support:	John Rice	webmaster@coastgeologicalsociety.org

Los Angeles Basin Geological Society

www.labgs.org

Contact: Bert Vogler
949-585-3103



Luncheon meetings are held monthly September and October; and January through June, usually on the fourth Thursday of the month, at The Grand at Willow Street Conference Centre (4101 E. Willow Street) in Long Beach. Lunch is served at 11:30 a.m., and the talk starts at 12:15 p.m. The cost is \$25 (with reservations), \$30 (without reservations), \$20 for retired members, and \$5 for students. "Reservations can be made online at www.labgs.org or by contacting Maia Davis at 530-559-1404 or maiac.davis@gmail.com. Reservations are best made prior to Tuesday before the meeting.

President:	Bert Vogler	hvogler@kleinfelder.com
Vice President	Nate Busch	nbusch@eecenvironmental.com
Treasurer:	Nicky White	nwhite@geomechanicstech.com
Secretary:	Wanjiru Njuguna	wanjiru.njuguna@gmail.com
Scholarships:	Karla Tucker	ktrk2@aol.com
Webmaster	Wanjiru Njuguna	wanjiru.njuguna@gmail.com

Northern California Geological Society

www.ncgeolsoc.org

803 Orion #2
Hercules, CA 94547-1938

Contact: Barbara Matz
barbara.matz@aptim.com



Evening meetings are held monthly September through May, usually on the last Wednesday of the month, at the Masonic Center (9 Altarinda Road) in Orinda. Social hour starts at 6:30 p.m., and the talk starts at 7:00 p.m. (no dinner). For reservations, contact Dan Day at danday94@pacbell.net before the meeting. Cost is \$5 per regular member; \$1 per student member; and \$1 per K-12 teachers.

(Continued on next page)

**NCGS
Officers**

President:	Greg Bartow	gregbartow@yahoo.com
President-elect:	Tom MacKinnon	tom.mackinnon@comcast.net
Past President:	Will Schweller	willschweller@yahoo.com
Treasurer:	Barbara Matz	barbara.matz@aptim.com
Recording Secretary:	Crystal Replogle	ctreplogle@gmail.com
Membership Chair:	Tom Barry	tomasbarry@aol.com
Outreach Chair:	Mark Petrofsky	mpetrof@hotmail.com
Newsletter Editor:	Mark Sorensen	msorensen@gilbaneco.com
Field Trip Coordinator:	Will Schweller	willschweller@yahoo.com
K-12 Program Co-Chairs:	Paul Henshaw	drphenshaw@comcast.net
K-12 Program Co-Chairs:	Pamela Polite Fisco	pampolite@gmail.com
Scholarships:	Phil Garbutt	plgarbutt@comcast.net
Program Director:	John Karachewski	geoscapes1@gmail.com
Website Editor:	Jonathan Partsch	jon.partsch@gmail.com

Northwest Energy Association
www.nwenergy.us

P. O. Box 6679
Portland, OR 97228 *Contact: Jim Jackson or John Armentrout*



Luncheon meetings are held monthly September through May, on the third Thursday of the month, at the Multnomah Athletic Club (1849 SW. Salmon Street) in Portland, Oregon. Meeting time is at 11:45 AM to 1:00 PM (speaker about 12:15 PM). The cost is \$25 for members and \$30 for non-members. For information or reservations email NWEnergyAssociation@gmail.com, or our Postal Box: Northwest Energy Association, P.O. Box 6679, Portland, Oregon 97228-6679.

President	Laird Thompson	lbtfracs@gmail.com
Vice-President	Chris May	c.law.may@gmail.com
Treasurer	Barb Portwood	bbportwood@gmail.com
Co-Treasurer	Jim Jackson	jackson.js@comcast.net
Secretary	Clark Niewendorp	clark.niewendorp@state.or.us

Sacramento Petroleum Association

P. O. Box 1844
Folsom, CA 95630 *Contact: Pam Ceccarelli
916-439-0400*



Luncheon meetings held monthly January through November, on the third Wednesday of the month. Location: Club Pheasant Restaurant in West Sacramento. The meetings start at noon. The cost is \$16 - \$20. For information or reservations, contact Pam Ceccarelli.

President:	Jerry Reedy	JWR5532@aol.com
Vice-President:	Scott Hector	Scott.Hector@gmail.com
Secretary	Derek Jones	djones@gasbiz.com
Editor/Treasurer	Pam Ceccarelli	pc626@comcast.net

San Joaquin Geological Society
www.sanjoaquingeologicalsociety.org

P. O. Box 1056
Bakersfield, CA 93302 *Contact: Lindsey Thompson
lthompson@envirotechteam.com*



We have dinner meetings on the second Tuesday of the month, October through June, at the American Legion Hall (Post 26) at 2020 H Street, Bakersfield, CA 93301. There is an icebreaker at 6:00 p.m., dinner at 7:00 p.m., and a talk at 8:00 p.m. Dinner is \$25 for members with reservations and \$30.00 for nonmembers and members without reservations. Students may attend for free.

President:	Jonathan Goodell	Jonathan.Goodell@crc.com
Past President:	Cameron Campbell	cameron.campbell@conservation.ca.gov
President-Elect:	Jeff Kimber	Jeff.Kimber@conservation.ca.gov
Vice-President:	Kristy Whitaker	KWhitaker@bry.com
Secretary:	Lindsey Thompson	lthompson@envirotechteam.com
Treasurer:	Jennifer Prosser	jprosser@envirotechteam.com
Webmaster:	Ivan Aburto	Ivan.Aburto@crc.com



BEST CORE SERVICES

where BETTER became BEST

We Supply Quality Data with Quality Service

4031 Alken St Suite A1
Bakersfield, CA 93308

Bryan Bell: (661) 496-2654

Office: (661) 835-6001

NOW AVAILABLE

Anomalies

✦ **Pioneering Women in Petroleum Geology: 1917-2017**

To be released April 1, 2017, *Anomalies* represents a deep foraging into the unrealized and near lost history of women that began in 1917 their 100 year journey as petroleum geologists.

“Robbie Gries and her contributors have created a remarkable account of early women in petroleum geology. The book represents a “deep dive” into the lives, accomplishments, triumphs, and, even, terrors, of early women professionals. It displays impressive scholarship, and reflects four years’ efforts to source histories of these largely forgotten women professionals.

An astounding network of women professionals, formed by need, strengthened by time, constituting an amazing support system. Robbie has done an amazing, multi-year research effort in uncovering hundreds of early petroleum geologists, active in many countries, whose early efforts are now recorded for our belated appreciation.

A delightful, hopeful, sense of progress is conveyed by the book, as the intense survival stories of early women geologists, give way to a prideful modern acknowledgement of the importance of women petroleum geoscientists in our modern petroleum industry.

The book should be read by every petroleum geologist, geophysicist, and petroleum engineer; partly for the pleasure of the sprightly told adventures, partly for a sense of history, and, significantly, because it engenders a proper respect towards all women professionals, forging their unique way in a “man’s world”.

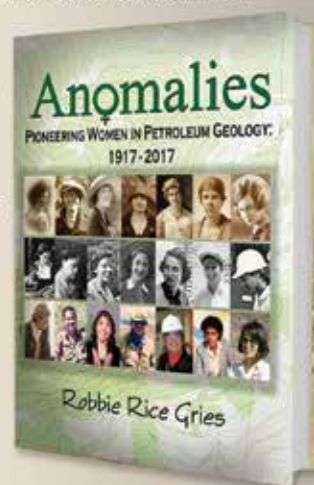
Buy this book! It will renew your pride in being a petroleum geologist, and it will enlighten you on the struggles of our wonderful women associates as they followed their professional dreams.”

— Marlan Downey, Past President of AAPG, CEO Roxanna Petroleum

“*Anomalies* celebrates the inspiring achievements of an intrepid group of pioneering women that have laid the groundwork for female geoscientists today. Robbie Gries provides an entertaining and informative narrative of 100 years of trailblazers that is enriched by excerpts from diaries, letters and interviews. The women in these pages were true scientific contributors and innovators at a time when women were just emerging into the growing field of petroleum geology. This is a must read for any historian of the oil patch, as it provides the only comprehensive record of the hidden history of these ground-breaking women.”

— Allyson Anderson Book,
Executive Director - American Geosciences
Institute

Once released, the book can be ordered from the AAPG Store for \$50 plus shipping and handling. Please e-mail publications@AAPG.org expressing your interest and we will contact you as soon as the book is available. Don't want to wait? Visit the AAPG Center at the 2017 ACE meeting to purchase your copy.



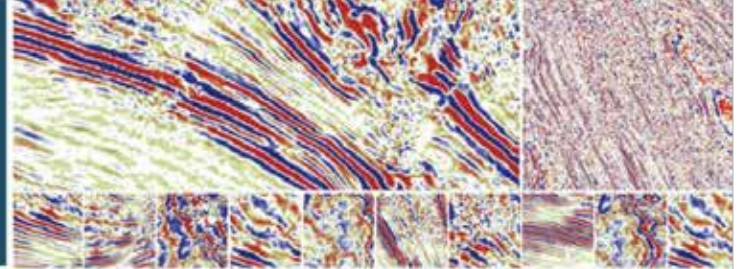


PACIFIC SECTION AAPG
P. O. Box 1072
BAKERSFIELD, CA 93302

PRESORTED
STANDARD
U.S. POSTAGE PAID
BAKERSFIELD, CA
PERMIT NO. 1163



PACSEIS
SEISMIC DATA



A LEADER IN SUBSURFACE INFORMATION

RESOURCES THAT DELIVER THE DIFFERENCE

- One of the largest seismic databases available for license
- Over 500,000 line miles of 2D data located in domestic United States
- 3,000 square miles of 3D surveys

ACQUIRED SEISMIC DATABASES BY PACIFIC SEISMIC CO.

- Chevron USA California, OXY USA Nationwide (including Arco & Enron)
- Santa Fe energy, TXO, Cities Service Oil & Gas Nationwide
- Southern Pacific, PG&E/ NGC, SOHIO

Pacific Seismic Company
WWW.PACSEIS.COM

Your Full-Service Seismic Brokerage Company
831.574.3330