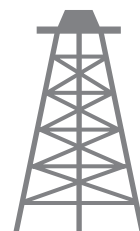




Pacific Petroleum Geology



NEWSLETTER

Pacific Section • American Association of Petroleum Geologists

May & June 2017

2017 AAPG
Pacific Section Annual Meeting

21-24 May • Anchorage, Alaska
Innovating the Future: Discovery to Recovery

Logos: AAPG (1917), Alaska Geological Society, AAPG Pacific Section (1925)

Innovating the Future

For more information contact the General Co-Chairs:
Monte Mabry or Tiffany Piercey
www.psaapg2017.com

**2017 PSAAPG, PS-SEPM,
& PCS-SEG Convention.
Anchorage, Alaska.
www.psaapg2017.com**

THANK-YOU

California Resources Corporation.

For your continued support of local students.
Your sponsorship funded many student dinners
at SJGS scientific talks in 2016-2017.



PAYZONE INC.

Geological, Geophysical, and Petrophysical Consulting Services for the Petroleum Industry 661-387-1715

- Accurate, consistent fieldwide reservoir properties for modeling, OIP, and improved heat management in thermal projects
- Old E-Log interpretation

- Image log interpretation and integration with petrophysical analysis
- 2D/3D seismic interpretation, expertise in old 2D data
- "Mystery logs" and other difficult log problems

Our petrophysical models for siliceous shales and California sands are based on over 30 years of experience with these rocks, including core, log, and lithology data from every basin in the state

Deborah Olson, President
dmolson@payzoneinc.com
661-747-0375

Have a log question? Give us a call!

www.payzoneinc.com

Tom Howard, Image Analyst
tomh@payzoneinc.com
832-407-2862

ROCK SOLID EXPERIENCE



Core Lab
RESERVOIR OPTIMIZATION

www.corelab.com
661-325-5657

© 2013 Core Laboratories.
All rights reserved.

2016-2017 Officers

President Robert Horton 4
661-599-7380
rhorton@csu.edu 5
president@psaapg.org

President-Elect Mike Nelson 6
805-535-2058
mnelson@dcorllc.com 7
president-elect@psaapg.org

Vice President Emily Fisher 8
661-665-5571 9
EAFisher@aeraenergy.com
vicepresident@psaapg.org 10

Secretary Becca Schempp 11
661.381.0478
Becca.Schempp@crc.com
secretary@psaapg.org 12

Treasurer 2016-2017 Lisa A. Alpert 13
661- 665-5557
laalpert@aeraenergy.com
treasurer@psaapg.org

Treasurer Elect 2016-2017 Simmie Chehal
661- 665-5738
SKChehal@aeraenergy.com
treasurer@psaapg.org

Past President Kurt Neher
661-412-5203
kurt.neher@crc.com
president@psaapg.org

Editor-in-Chief 2016-2018 Vaughn G. Thompson
661-633-4748
vaughn.thompson@crc.com
editor@psaapg.org

Staff

Web Master Taylor Carrasco
562-624-3259
Taylor.Carrasco@crc.com

Membership Chair Greg Thompson
661-364-3052
greg.thompsn@gmail.com

Publications Chair Larry Knauer
661-205-4463
laknauer@aol.com

Advisory Council Representative Tony Reid
2015-2018 661-412-5467
Tony.Reid@crc.com

President's Message • Robert Horton

In Memoriam • Nat Hay MacKevett & Thomas Walter Ladd

In Memoriam • Stowe Killingsworth

Member Article • Brandi Johnson

Article • CA State Lands Commission

2017 PSAAPG Convention • Highlights

2017 PSAAPG Convention • Social Events

2017 PSAAPG Convention • Local Field Trips

2017 PSAAPG Convention • Technical Field Trips

2017 PSAAPG Convention • Workshops

16-18 Member Society News •

- CONTACT THE EDITOR at editor@PSAAPG.org
- Images (graphics, photos, and scans) must be at least 300 dpi resolution. Text should be at least 600 dpi.
- Scanned photos, illustrations (line art) or logos should preferably be submitted as a .tif, .gif, or .bmp; .jpeg is OK.

Advertising Rates

Members	Single Issue	Year (6 issues)
Full Page	\$200.00	\$800.00
Half Page	\$125.00	\$525.00
Quarter Page	\$75.00	\$325.00
Business Card		\$125.00

2017 Advertisements reduced price by 50%
due to drastic drop in oil prices

Societies Free Advertising:

Convention: Unlimited Space in PSAAPG Newsletter
Societies: 1/4 Page in AAPG Explorer

Dear Pacific Section AAPG Members,

Those of you who just returned from the AAPG's 100th anniversary celebrations in Houston report an excellent convention with ~7000 attendees. As we contemplate this milestone, it is worth pointing out that the Pacific Section was founded over 90 years ago and was the first chartered section of the AAPG. Think of all monthly meetings, with their excellent speakers, the annual conventions, and the various field trips that we have all experienced, as well as all of the excellent publications made available to help us advance our knowledge, and then consider that all of this has been going on since before most of us were even born. It speaks highly of the motivated members and officers who have endeavored to make this society and our local sections so successful over such a long time span.



Speaking of which, it is that time of year for PSAAPG membership to choose a new slate of Executive Committee officers. Ballots are being mailed as this newsletter goes to print and should be in your mailboxes soon. The Election Subcommittee has identified an excellent group of highly qualified candidates whose bios were published in the last newsletter and also will be included with the ballot. I encourage everyone to return your ballots ASAP, and rest assured that regardless of the outcomes PSAAPG will be governed by an Executive Committee dedicated to continuing the success to which we are all accustomed.

Another way in which our members have been supporting the advancement of geologic knowledge is through the activities of The Pacific Section AAPG Foundation. This organization was founded in 1999 as a 501(c)(3) corporation to conduct the charitable and educational business of the Pacific Section AAPG. Sources of income include donations from Pacific Section Conventions, used book sales, and especially donations from individual members. The current major initiative is to create an endowment to perpetually fund our Teacher-of-the-Year awards. In this program money is given annually to each local geologic society in the Pacific Section to provide an award to an outstanding Earth science teacher. In addition, the Foundation provides support to several other Earth science education programs: Bob Hacker Publication Fund, California Well Sample Repository, Henry Walrond Publication Fund, John E. Kilkenny Scholarship Fund, Martin Van Couvering Fund, Imperial Barrel Competition, and Pacific Section AAPG Scholarships. None of these would be possible without the generous support of our membership, and the PSAAPG Foundation provides an opportunity for all of our members to become involved in the furtherance of geological knowledge through tax-exempt donations to these programs. Additional information on all these named funds may be found on the PSAAPG website – www.psaapg.org.

Finally, we are now just weeks away from the Pacific Section convention in Anchorage, and once again I want to encourage everyone to attend if at all possible. The technical program looks great, as do the luncheons, field trips, and other events. These conventions are always a great way to renew old friendships and to learn what is going on in the geological world outside of the daily events of our own endeavors. I know that I always feel reinvigorated after returning from a successful convention. And Anchorage is certainly a much different city than Las Vegas, where our last convention was held; it has a certain charm that is completely lacking in the latter. And did I mention that May is a wonderful time of year to visit Anchorage? I hope to see you there. I know that I, for one, am really excited and looking forward to attending.

Robert Horton

PSAAPG President, 2016-2017

Nat Hay MacKevett

1920 - March 16, 2017

Nat Hay MacKevett passed away peacefully on March 16, 2017, in Bakersfield, California. He was born in 1920 on Long Island, New York, as the younger of two sons to Edward and Josephine MacKevett.

After spending a turbulent childhood during the Great Depression, he settled with his mother and brother in Santa Monica, California. World War II soon started and he served his country from 1942-1946 in the Pacific Theater as a weatherman for the Army's air combat operations. Upon his return, he obtained a degree in geology from UCLA and began his 54-year career from 1947-2001 as a petroleum geologist with Shell Oil, General Petroleum, Hershey Oil and as a consultant in Texas and California.



From his first marriage to Elizabeth Lee, Paula was born, the eldest of his three children. He then divorced and in 1960 married Maureen Kelly, with whom he had two children, Leslie and Douglas. Nat was active sportsman and outdoorsman from his youth, playing team sports such as baseball and basketball. In the Army, he was very proud of the Golden Gloves he earned as a boxer. Later in life, he still pursued outdoor activities such as fishing and hunting.

Nat is survived by his wife, Maureen; his three children Paula, Leslie, and Douglas; and two grandchildren Brian and Karin. He was preceded in death by his elder brother Ed in 2006.

A "Celebration of Life" will be held at Greenlawn Funeral Home Southwest, 2739 Panama Lane, in Bakersfield, California on August 15, 2017, at 10 am.

Thomas Walter Ladd

April 29, 1949 - February 27, 2017

Thomas Walter Ladd was born April 29, 1949, in Stockton, CA, to George Walter and Claradean Elizabeth (Bell) Ladd. He grew up in Stockton and attended Lodi, CA, schools, graduating from Lodi Union High School in June 1968. His junior year of high school, he studied in Viña Del Mar, Chile, as a foreign exchange student.

On August 13, 1972, he married Dianne May Wheeler in Morris Chapel, University of the Pacific (UOP), Stockton.

Tom graduated from UOP, Stockton, CA, in December 1972; and in May 1975, he graduated with a Master's degree in Geology from University of Arizona (U of A), Tucson.

Upon graduating from U of A, he and Dianne moved to Bakersfield in June 1975 to begin his career in the petroleum industry. His first job as a geologist was at Union Oil Co. Then in 1977 he began working at Tenneco Oil Co. On April 1, 1979, Tom became a California Registered Geologist and began his career as an independent oil consultant, creating GeoPlus Consulting and Tetra Oil Companies. He truly was excited every day working in the California petroleum industry and enjoyed all of the people he met and worked with throughout his career.

He is survived by his wife of 44 years, Dianne of Bakersfield; a son, Jerry Ladd, his wife Heather, and daughters Abigail and Em-malyn of Phoenix, Arizona; a daughter, Nancy (Ladd) Owyang, her husband Ethan, and daughters Olivia and Clara of Bothell, Washington.

Tom loved his family and his work in the petroleum business. However, he was diagnosed with lymphoma and began a valiant fight to overcome this disease beginning in May 2016. His struggle ended on February 27, 2017, in Bakersfield, CA. He will be buried in Lodi, CA.

Stowe Killingsworth

November 3, 1943- April 7, 2016

Nat HLawrence Stowe Killingsworth was born to his proud parents, Dorothy and Cecil Killingsworth in Los Angeles, California on November 3, 1943. He was raised in Brentwood, where he attended Brentwood Elementary, Paul Revere Junior High and University High School. Stowe played football as a quarterback on the Uni Warrior football team. He attended the University of Southern California majoring in petroleum engineering and was a proud member of the Beta Theta Pi fraternity. Stowe always put friendship first, and had many dear and lifelong friends. In 1966, he was drafted into the United States Army. He served as a member of the Army's Special Forces in Vietnam during 1967 where he received the Vietnamese Cross of Gallantry for meritorious service during combat in the Mekong Delta. He also received a battlefield commission which he turned down.



After he returned home, he went to work in the family oil and gas business with his father in Kern County. Stowe had spent every summer and holiday season working in the oil fields to gain valuable experience. He and his father worked together for ten wonderful years until his father's untimely death in 1977. Stowe continued his profession as an independent oil and gas producer for the next 20 plus years. He retired in 2000.

In 1978, Stowe met the girl of his dreams and love of his life, Susan Morris. They were married in 1980. Married life and family were the most wonderful part of his life. Ashley was born in 1981, Erin in 1983, and Whitney in 1987. Stowe and all his girls! He was the finest father God ever put on this Earth. The tremendous love he showed for his wife and children were unmeasurable and had no end.

The family moved from Laguna Niguel to Bakersfield in 1986 so they could all be together and Stowe wouldn't have to travel from Orange County to the oil fields in Kern County every week. Stowe lived with his family in Bakersfield until he and Susan moved to Newport Beach full time in 2010.

He is survived by his loving and devoted wife Susan, his daughter Ashley and son in law Michael Ortwein, his daughter Erin and son in law Jock Goodrich, his daughter Whitney and future son in law Sam Salfiti, his grandchildren Caden and Charlotte Ortwein, soon to be Baby Goodrich, his sister Cecily Anne, and his beloved terrier Winston.

Marty Hall
Program Development Manager
Multi-Client Services

7765 Windwood Way
P.O. Box 549
Parker, CO 80134
USA

P: 720 851.6152
C: 303 885.8860

Geokinetics™
geokinetics.com
marty.hall@geokinetics.com

Geolog

DAVID BURROUGHS
President

GEOLOGICAL LOGGING INC.
9229 Beatty Drive, Suite B
Sacramento, CA 95826
(916) 452-9570 Tel
(408) 307-4653 Cell
(916) 452-9573 Fax
david@geologinc.net

www.geologinc.net

HOME MOVIES TO DVD,
PHOTO GIFTS, RESTORATIONS
& MORE

digital creations

1705 20th St.
(661) 322-5552
digitalcr1@gmail.com

like us on facebook
digitalcreations.bakersfield

Retirement Planning
College Savings Plans
Financial Planning

Morgan Stanley

The Hopps Group Lydia Hopps & Benjamin Hopps CFP®
Investment Management Consultant
Senior Vice President
Financial Advisor
300 Esplanade Dr., 10th Floor
Oxnard, CA 93036
1 805 278-3609
www.morganstanleyfa.com/thehoppsgroup/

© 2014 Morgan Stanley Smith Barney LLC. Member SIPC.
CRC897562 03/14

The AAPG YPs at ACE!

Brandi Johnson, Chevron USA .

This has been an exciting first half of 2017 for the Young Professionals of AAPG. For the 100th anniversary of AAPG, taking place in Houston, TX, the YPs had a lot of involvement throughout the week with events of networking, sessions, receptions, and awards.

Before the opening ceremonies there was a great Young Professionals Meet & Greet event with over 150 students, YPs, and experienced professionals, which allowed people who'd never been to ACE the opportunity to connect and engage with peers of all kinds. This YP networking reception was generously sponsored by **Noble** and **Shell** and gave students and YPs the opportunity to network and enjoy an excellent Houston evening. The **PROWESS** Special Interest Group had a wonderful forum for "100 Years of Pioneering Women in Petroleum Geology" where attendees were invited to enthusiastically dress up like geologists of the eras from early 1900's-current in a costume contest co-organized with the AAPG YP SIG. With the convention kicked-off, the **first ever Young Professionals Exemplary Service Award** was presented and there were 4 outstanding YP recipients (**Aisha Al-Bulushi, Cat Campbell, Nick Lagrilliere, and Ryan Lemiski**)!

Sessions throughout the week had great attendance and inspired listeners. The YPs and DPA hosted a joint session with a lot of very intriguing talks on Future of Energy: Essential Tools for the Next Generation of Geoscientists. There were a variety of receptions available to attend, including the DPA Dinner, the 100th Anniversary Gala, where **Daniel Yergin** spoke, and the Jammin' Geos party. One of our local Bakersfield PS AAPG members, **Anne Draucker**, attended the **Advisory Council** meeting, ran the EMD Business meeting (which is still looking for a Section Councilor), voted and presented at the House of Delegates meeting, and finally, presented the EMD Honors and Awards at their joint luncheon with DEG. She sets a great example of all the possibilities of involvement we have with being a member of AAPG. The students at ACE had a great turnout, as well, with their presence at the mentoring event, student reception, career seminar, poster sessions, short courses and field trips! They are all well on their way to becoming dedicated YPs!

If you are a young professional in the **Pacific Section** and are looking to get involved, we are planning upcoming events for the rest of the year, so be sure to contact the PSAAPG YPs at: PSAAPGYPS@gmail.com

Brandi Johnson



RESERVOIR CHARACTERIZATION
GEOLOGY
PETROPHYSICS
DATABASE MANAGEMENT
DIGITIZING & SCANNING

EarthQuest Technical Services, LLC

David R. Walter

drwalter@eqtservices.com
www.eqtservices.com

P.O. Box 1697
Bakersfield, CA 93302
661•321•3136

GREGORY GEOLOGICAL SERVICES

Glenn J. Gregory

Calif. Prof. Geol. #3676

8804 O'Meara Ct.
Bakersfield, CA 93311

(661) 747-5065

glenng@bak.rr.com

CHARPENTIER
WEALTH STRATEGIES

Debbie Charpentier

Comprehensive Financial Planning

661-322-5204

Debbie.Charpentier@LFG.com



Debbie Charpentier is a registered representative of Lincoln Financial Advisors Corp.

Securities and investment advisory services offered through Lincoln Financial Advisors, a broker-dealer (member SIPC) and registered investment advisor. Insurance offered through Lincoln Marketing and Insurance Agency, LLC and Lincoln Associates Insurance Agency, Inc. and other fine companies. Charpentier Wealth Strategies is not an affiliate of Lincoln Financial Advisors Corp. CRN1387451-010816

www.CharpentierWealth.com

CA Insurance License #0763281



PETROLOG

PETROLOG, INC.

JOHN T. WILLIAMS

Geologist, P.G. #5899, President

Geological Well Logging

P.O. BOX 7028

VENTURA, CA 93006

jtw@petrolog-geological.com

(805) 642-2847 • Fax(805) 980-5569 • Cell(805) 231-3793

SANTA BARBARA CHANNEL OIL PLATFORM TO BE DECOMMISSIONED

*The State Lands Commission is committed to public and environmental safety
and community engagement*

Sacramento, CA - Today, the State Lands Commission received documents from Venoco, LLC quitclaiming its interests in the South Ellwood Field leases, including Platform Holly and the Goleta Beach Pier leases offshore the City of Goleta, Santa Barbara County.

This effectively ends commercial oil and gas production in state waters at this location in the Santa Barbara Channel and returns operational control of these assets to the Commission. California's Coastal Sanctuary Act prohibits the Commission from issuing new offshore oil and gas leases. The Commission will now begin the process of decommissioning Platform Holly.

"This decision signifies yet another landmark in the evolution of California's energy portfolio in which the Commission has been a key participant," said Lt. Governor Gavin Newsom, who chairs the State Lands Commission. "As President Trump voices his determination to expand oil drilling and twentieth-century energy policies, California is pioneering the sustainable alternative that protects our coastlines and environment while gaining a strong foothold in the future energy and global economy."

The Commission will ensure that the wells and facilities are secured and maintained while it develops a plan, in coordination with local and state regulatory agencies, to efficiently and safely address the disposition of the wells, platform and piers. The process for decommissioning the facilities and plugging and abandoning the approximately 32 wells on state property will be expensive, complex, and lengthy. The Commission is dedicated to a robust, transparent, and collaborative process with the City of Goleta, Santa Barbara County and other local communities and stakeholders in developing a decommissioning plan. Protecting public health and safety and the marine environment is paramount.

The Commission is sensitive to the significant impact this situation has on Venoco employees and contractors, the local economies of the City of Goleta and Santa Barbara County, and the community recipients of Venoco's philanthropy. Venoco has operated the South Ellwood Field since 1997, when it acquired the leases from ExxonMobil. Since then, Venoco has generated approximately \$160 million in state revenue from royalties and rent, without any significant oil spills on state property. The Commission thanks Venoco employees for safely managing the State's oil and gas resources for the past 20 years.

Published 4-17-2014
www.slc.ca.gov



TECHNICAL SESSIONS

ORAL SESSION #1: Frontier Exploration in the Arctic Offshore

Session Chairs: Dave Houseknecht & Tom Homza

Date, Time, & Location: Monday, May 22, 8:00 AM – 11:15 AM, Howard Rock AB

ORAL SESSION #2: Structure and Tectonics: New Perspectives and Interpretations

Session Chairs: Simon Kattenhorn & Robert Humphries

Date, Time, & Location: Monday, May 22, 1:15 PM – 4:30 PM, Howard Rock AB

ORAL SESSION #3: Geophysics, Petrophysics, and Reservoir Description: From Basins to Pores

Session Chairs: Shuvajit Bhattacharya & Leo Brown

Date, Time, & Location: Tuesday May 23, 8:00 AM – 11:35 AM, Howard Rock A

ORAL SESSION #4: New Research on Alaska North Slope Source Rocks and Low Perm Reservoirs

Session Chairs: Allegra Hosford Scheirer & Palma Jarboe

Date, Time, & Location: Tuesday May 23, 8:00 AM – 11:35 AM, Howard Rock B

ORAL SESSION #6: Sequence Stratigraphy and Sedimentology: Fluvial to Deep-Water Reservoirs

Session Chairs: Jennifer Aschoff & Mark Scheihing

Date, Time, & Location: Tuesday May 23, 1:45 PM – 5:00 PM, Howard Rock AB

ORAL SESSION #5: Developments in the Onshore Alaska Exploration and Production

Session Chairs: Rob Miller & Robert Gillis

Date, Time, & Location: Wednesday May 24, 8:00 AM – 11:15 AM, Howard Rock AB

All Convention Luncheon

The keynote speaker for this year's All Convention Luncheon is John Armentrout. Join us as John updates us on climate change and global warming.

Date, Time, & Location: Monday May 22, 11:30-1:00pm - Howard Rock Ballroom B



Pacific Section AAPG Honors & Awards Luncheon

With special luncheon speaker Dave Lachance, VP Reservoir Development at BP Alaska. "Greater Prudhoe Bay at 40: Still a Giant"

Date, Time, & Location: Monday May 23, 11:30-1:00pm - Howard Rock Ballroom B



AAPG Divisions Luncheon: DPA, DEG & EMD

Date, Time, & Location: Monday May 24, 11:30-1:00pm - Howard Rock Ballroom B

SUNDAY NIGHT: YP & Student Meet n' Greet.

This event is sponsored by ConocoPhillips Alaska and will have a quick word from our sponsor.

Students, Young Professionals and Mentors -
Everyone is welcome!

WHEN: Sunday, May 21, 5:00 PM - 6:00 PM
Directly Before the Convention Icebreaker Event
WHERE: The Summit - Top Floor of the Sheraton



Kick off the 2017 Pacific Section Meeting by attending our Meet & Greet on the top floor of the Sheraton with stunning views of Anchorage! Participants will get paired in small groups and have time to socialize and get to know one another. A great opportunity to expand your geoscience and industry network!

Light snacks and beverages provided

MONDAY NIGHT: Wine Rocks!

An exciting evening filled with wine and geology! Come and learn about some great wines and some fun geology.

Hosted by Chad Culley from Crush
www.crushak.com

WHEN: Monday, May 22, 6:00 PM - 8:00 PM
WHERE: Crush Wine Bistro. Downtown Anchorage, 343 6th Ave
COST: \$65.00 per person.



Light appetizers & wine will be served.

WEDNESDAY EVENING

Geophysical Society of Alaska (GSA) & Alaska Geological Society (AGS) Annual Scholarship Picnic.

Come join the geoscience community for the Annual GSA/AGS Scholarship fundraiser!
Menu includes steak, sausages, burgers, salads and beverages!
Live music and fun activities for kids.

WHEN: Wednesday, May 24, 5:00 PM - 8:30 PM
WHERE: Abbott Loop Community Park
COST: Individual: \$15.00 per person
Student: \$10.00 per student
Family: \$30.00 per family



LOCAL FIELD TRIPS

Local Trip #1

Fishing on the Kenai Peninsula. Everyone is welcome!

OPTION A: Friday, May 19 - Sunday May 21

OPTION B: Thursday, May 25 - Saturday May 27

Alaska's Kenai Peninsula is fishing at its best. Drifter's Lodge sits at the headwaters of the Kenai River in the Chugach Mountains in Cooper Landing.

The drive through the Chugach mountains and onto the Kenai Peninsula is spectacular! Seasoned, professional guides will assist you in your pursuit of Trophy Rainbow Trout, Dolly Varden or King Salmon.

What's included: Transportation to and from Anchorage, 2 nights accommodations at Drifter's, All meals, Full day of fishing on the Kenai River, All gear including rods, waders & tackle

Check out the lodge at www.drifterslodge.com

Local Trip #2

Matanuska Glacier Walk

WHEN: Thursday, May 25th, 8:30AM to 6:00PM

Journey north of Anchorage and explore the Matanuska Glacier's many incredible features, like glacial blue meltwater pools, in Southcentral's beautiful Matanuska Valley.

Includes fully guided tour and transportation to Glacier View, lunch, equipment, transportation to Anchorage.



TECHNICAL FIELD TRIPS

Pre-Convention Field Trip

Geology of South-Central Alaska, Indian to Hatcher Pass

Field trip to the Mesozoic arc and accretionary complex of South-Central Alaska, Indian to Hatcher Pass

In this transect we will visit:

- 1- The accretionary prism, represented by the Jurassic to Late Cretaceous Chugach terrane
- 2- The terrane boundary, represented by the Border Ranges and Knik Arm faults
- 3- The overlying arc terrane, represented by the Paleozoic to Jurassic Peninsular terrane
- 4- The forearc basin, represented by Late Cretaceous and younger deposits that unconformably overlie the Peninsular terrane, and
- 5- The magmatic underpinnings of the Late Cretaceous arc that was built on the Peninsular terrane after it was accreted to the continental margin.

LEADER: Sue Karl, U.S. Geological Survey

DATE: **Saturday, May 20th**

COST: \$150.00 per person

Post-Convention Field Trip

Geology of the Dalton Highway, Fairbanks to the North Slope

This trip will start in Fairbanks, with overnights in Coldfoot and Deadhorse. Participants are responsible for getting themselves to Fairbanks. Once the trip is complete, they can choose to depart from Deadhorse or Fairbanks

LEADER: Marwar Wartes, Department of Natural Resources

DATE: **Thursday, May 25th**

COST: \$1300.00 per person



Pre-Convention: Core Workshop #1

Brookian Turbidities

LEADERS: Bill Morris & Pat Perfetta

Date, Time, & Location: Sunday, May 21, 12:00 PM - 4:00 PM, Alaska Archives, 1300W 56 Ave.

Post-Convention: Core Workshop #2

Brookian Topsets

LEADER: Dave Lepain & Marwan Wartes

Date, Time, & Location: Wednesday, May 24, 1:00 PM - 5:00 PM, Alaska GMC, 3651 Penland Parkway

Introduction to Basin & Petroleum System Modeling

LEADER: Allegra Hosford Scheirer

Date: Saturday & Sunday, May 20 & 21.

Course Objectives

Course attendees will learn both the theory and practice of basin and petroleum system modeling in terms of how to construct input and how to analyze output. Attendees will be proficient in the construction and analysis of 1-D basin models by course end. Attendees will also be introduced to the requirements and complexities of higher dimension models.

Key Topics Covered

The course starts with a section on the concept and the role that basin models play in understanding it. It proceeds with discussions of basin analysis, geohistory analysis, interpretation of basin analysis for basin modeling, petroleum migration analysis, and model calibration. Theoretical concepts will be illustrated with hands-on exercises involving real sedimentary basins ("case studies"). Input data for all lab exercises are in the public domain.



CANCELLED

Required Materials

Each attendee will need to bring a laptop and mouse and will either need to download software as instructed before the course or in the half hour before the course officially begins.

Definition of Uncertainty in Pore Pressure Prediction

LEADERS: Edward Hoskin & Stephen O'Connor, IKON Science

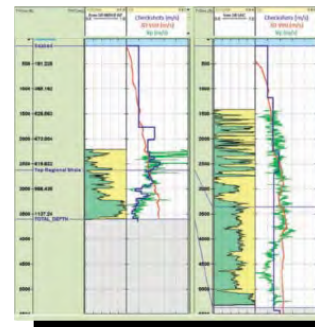
Date: Saturday, May 20.

Course Objectives

An excellent education and additional understanding for anyone from drillers, G&G and management to procurement. This course with appreciation for how data-driven and process-driven approaches to predicting pore pressure can be identified and quantified.

Key Topics Covered

The course is aimed at both data-driven and reducing uncertainty during well planning and design. Through discussion, you will learn how to identify both data-driven uncertainty as well as process-driven approaches. The ultimate aim is to see if Expected and Worst Case can be appropriately risked such that percentage likelihood can be assigned to each.



CANCELLED

SIGN UP TODAY!

MAY 5, 2017!

“THE WOOLLEY”

18th ANNUAL CGS GOLF TOURNAMENT & BBQ Friday, May 5, 2017

This Year on: CINCO de MAYO



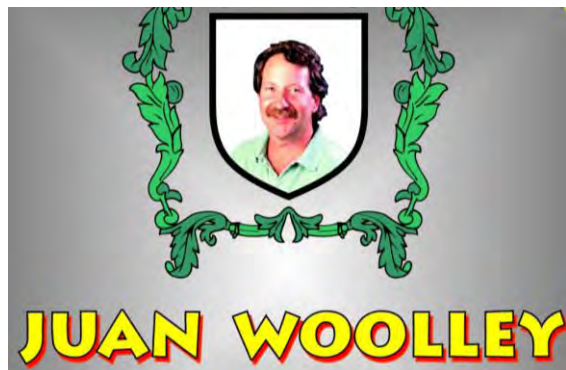
**PROVIDING SCHOLARSHIPS
IN THE NAME OF JOHN J. WOOLLEY
THROUGH THE
COAST GEOLOGICAL SOCIETY
(an affiliate of Pacific Section AAPG)**

ELKINS RANCH GOLF COURSE – 1386 Chambersburg Rd, Fillmore, CA

- **GOLF** – “SCRAMBLE” Format – and **Festive BBQ** Dinner!
- **Shotgun Start! Best-Ball! On-Course Contests! Prizes! Raffle! Awards!**
- **Sponsorships are available!**

Sponsorship and entry forms are available on the CGS web-site:

www.coastgeologicalsociety.org





California Well Sample Repository

Our 60+ Volunteers



Our Volunteers curate material from Superior Oil Company's collection from the early 1930's.



Step 1



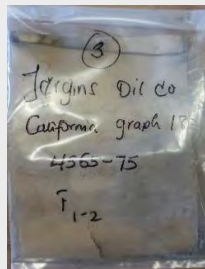
Wooden Crates with Samples

Step 2



Samples in Paper Bags from 1920's

Step 3



Samples Transferred into Plastic Bags

Step 4



Plastic Bags Placed into Boxes

Step 5



Boxes Placed on Shelf



Dr. Victor Church Memorial

The only facility in California providing permanent storage and public use of cores, sidewall samples, drill cuttings, outcrop samples, microfaunal slides, foundation borings, and mineral suites.



The Repository is open Tuesdays, Wednesdays, and Thursdays, from 9am-2pm.

Visit us on the web at www.wellsample.com or call (661) 654-2324 for more information.

Alaska Geological Society - Hard at work on the Convention!!!!!!

May meeting to be replaced by the Convention. Meetings commence in September, after summer break.

Coast Geological Society

May 16th, 2017. Coast Geological Society Scholarship Awards Night.

Speaker: Mary Bates, College of the Canyons. "Ice Age California"

June – August: Summer Break.

Woolley Golf Tournament – The 18th annual Woolley Golf Tournament & BBQ will be held on May 5th, 2017 at Elkins Ranch Golf Course, Fillmore, CA. Please see the Coast Geological Society web-site for sponsorship and entry forms!

L.A. Basin Geological Society

May 25th, 2017.

Speaker: Joann Stock, Caltech. "Lithosphere thinning during continental breakup: drilling at the South China Sea rifted margin (Joides Resolution IODP Expedition 367)"

June 22nd, 2017.

Speaker: Bill Bartling, Dept. of Conservation, DOGGR. "Department of Oil, Gas and Geothermal Resources – Organizational Renewal Plan and Update on Regulatory Progress and Impacts"

July – August: Summer Break.

Northern California Geological Society

May 31st, 2017.

Speaker: Dr. Greg Stock, National Park Service. "The Rise and Fall of Sierra Nevada Glaciers"

June 28th, 2017.

Speaker: Dr. Matthew J. James, Sonoma State University.

"The Galapagos Expedition that Vindicated Darwin"

Northwest Energy Association

May 18th, 2017.

Speaker: Dr. Peter R. Rose, AAPG Distinguished Lecturer

"Objective Overview of Global Climate Change in 2016: A Geological Perspective"

July – August: Summer Break.

Sacramento Petroleum Association

June – August: Summer Break.

San Joaquin Geological Society - Announcements coming soon

May 9th, 2017.

Speaker: Mike Clarke, Aera Energy. "The Lower Brown Shale of South Lost Hills: An Example of a Diagenetic Trap"

June 13th, 2017.

Speaker: Joe Nahama, PetroRock, LLC. "Wildcatting"

July – August: Summer Break.

New SJGS social media: Follow us on Facebook (@SanJoaquinGeologicalSociety)

and Instagram (@sanjoaquingeosociety)!

Stay tuned for upcoming SJGS field trips this year! We'll be exploring California's fascinating geology in 2017.



Alaska Geological Society
www.alaskageology.org

P. O. Box 101288
Anchorage, AK 99510

Contact: Dave Buthman
dbuthman@hilcorp.com



Geology meetings/talks are held monthly September through May, usually on the third Thursday of the month, at the BP Energy Center (1014 Energy Court) from 11:30 am to 1:00 pm. Open To The Public. No Charge to Attend.

President	Chad Hults	chadcph@gmail.com
President-Elect	Larry Smith	ljsmith@gci.net
Vice-President	Keith Torrance	keith.torrance@uicurniaq.com
Secretary	David Buthman	dbuthman@hilcorp.com
Treasurer	Carla Sanchez Phelps	carlasphelps@gmail.com
Past-President	Monte Mabry	monte.mabry@bp.com

Coast Geological Society
www.coastgeologicalsociety.org

P. O. Box 3055
Ventura, CA 93006

Contact: Alastair Hadow
805-804-7233



Dinner meetings are held monthly September through May, on the third Tuesday of the month, at Poinsettia Pavilion, 3451 Foothill Road in Ventura. Social hour starts at 6:00 p.m., dinner is served at 7:00 p.m., and the talk starts at 8:00 p.m. The cost of dinner with reservations is \$20 (members), \$25 (non-members), or \$10 (students and K-12 teachers). For reservations, please email Eric White (secretary@coastgeologicalsociety.org), and should be made by 4:00 p.m. on the Friday before the meeting.

President	Alastair Hadow	president@coastgeologicalsociety.org
Past President	Bonnie Walters	pastpresident@coastgeologicalsociety.org
Vice President	Theresa Heirshberg	vicepresident@coastgeologicalsociety.org
Secretary	Eric White	secretary@coastgeologicalsociety.org
Treasurer	Stacey Zeck-Boles	treasurer@coastgeologicalsociety.org
Membership chair	Phil Kaminski	membership@coastgeologicalsociety.org
Webmaster/Tech Support	John Rice	webmaster@coastgeologicalsociety.org

Los Angeles Basin Geological Society
www.labgs.org

Contact: Jean Kulla
949-500-3095



Luncheon meetings are held monthly September and October; and January through June, usually on the fourth Thursday of the month, at The Grand at Willow Street Conference Centre (4101 E. Willow Street) in Long Beach. Lunch is served at 11:30 a.m., and the talk starts at 12:15 p.m. The cost is \$25 (with reservations), \$30 (without reservations), \$20 for retired members, and \$5 for students. Reservations can be made online at www.labgs.org or by contacting Graham Wilson at 562-326-5278 or GWilson@SHPL.net Reservations must be made prior to Tuesday before the meeting.

President	Bert Vogler	hvogler@kleinfelder.com
Vice President	Jacqueline Chavez	geojacqueline@gmail.com
Treasurer	Nicky White	nwhite@geomechanicstech.com
Secretary	Ryan Weller	ryweller@gmail.com
Scholarships	Karla Tucker	ktkr2@aol.com
Webmaster	Ivan Aburto	Ivan.Aburto@crc.com

Northern California Geological Society
www.ncgeol.org

9 Bramblewood Court
Danville, CA 94506-1130

Contact: Mark Sorensen
msorensen64@earthlink.net



Evening meetings are held monthly September through May, usually on the last Wednesday of the month, at the Masonic Center (9 Altarinda Road) in Orinda. Social hour starts at 6:30 p.m., and the talk starts at 7:00 p.m. (no dinner). For reservations, contact Dan Day at danday94@pacbell.net before the meeting. Cost is \$5 per regular member; \$1 per student member; and \$1 per K-12 teachers.

(Continued on next page)

NCGS Officers:

President	Will Schweller	willschweller@yahoo.com
President-elect	Greg Bartow	Gregbartow@yahoo.com
Past President	Phil Reed	philecreed@yahoo.com
Treasurer	Barbara Matz	barbara.matz@cbifederalservices.com
Secretary	Crystal Replogle	ctreplogle@gmail.com
Membership Chair	Tom Barry	tomasbarry@aol.com
Outreach Chair	John Christian	jmc62@sbcglobal.net
Newsletter Editor	Mark Sorensen	msorensen64@earthlink.net
Field Trip Coordinator	Stefano Mazzoni	mazzonigeoscience@gmail.com
Scholarships	Phil Garbutt	plgarbutt@comcast.net
Program Director	John Karachewski	cageo@sbcglobal.net
Website Editor	Mark Detterman	mdetter1@gmail.com

Northwest Energy Association

www.nwenergy.us

P. O. Box 6679

Portland, OR 97228-6679

*Contact:**Jim Jackson or John Armentrout*

Luncheon meetings are held monthly September through May, on the third Thursday of the month, at the Multnomah Athletic Club (1849 SW. Salmon Street) in Portland, Oregon. Meeting time is at 11:45 AM to 1:00 PM (speaker about 12:15 PM). The cost is \$25 for members and \$30 for non-members. For information or reservations email NWEnergyAssociation@gmail.com, or our Postal Box: Northwest Energy Association, P.O. Box 6679, Portland, Oregon 97228-6679.

President	Laird Thompson	lbtfrcs@gmail.com
Vice-President	Steven Pappajohn	pappajohn@narpllc.com
Past President	Bill Rodgers	bill.rodgers@stoel.com
Treasurer	Barb Portwood	bbportwood@gmail.com
Co-Treasurer	Jim Jackson	jackson.js@comcast.net
Secretary	Clark Niewendorp	clark.niewendorp@state.or.us

Sacramento Petroleum Association

P. O. Box 1844

Folsom, CA 95630

*Contact: Jerry Reedy or Pam Ceccarelli**916-486-2643**916-439-0400*

Luncheon meetings held monthly January through November, on the third Wednesday of the month. Location: Club Pheasant Restaurant in West Sacramento. The meetings starts at noon. The cost is \$16 - \$20. For information or reservations, contact Pam Ceccarelli.

President	Jerry Reedy	JWR5532@aol.com
Vice-President	Scott Hector	Scott.Hector@gmail.com
Secretary	Derek Jones	djones@gasbiz.com
Editor/Treasurer	Pam Ceccarelli	pc626@comcast.net

San Joaquin Geological Society

www.sanjoaquingeologicalsociety.org

P. O. Box 1056

Bakersfield, CA 93302

*Contact: Beckie Burston**BeckieBurston@chevron.com*

We have dinner meetings on the second Tuesday of the month at the Eagle's Lodge at 1718 17th Street, Bakersfield, CA 93302. There is an icebreaker at 6:00 p.m., dinner at 7:00 p.m., and a talk at 8:00 p.m. Dinner is \$25 for members with reservations and \$30.00 for nonmembers and members without reservations. Students may attend for free.

President	Greg Gordon	gsgordon@aeraenergy.com
Past President	Ariel Auffant	aauffant@chevron.com
President-Elect	Cameron Campbell	cameron.campbell@conservation.ca.gov
Vice-President	Mark Maroun	mgmaroun@aeraenergy.com
Secretary	Beckie Burston	BeckieBurston@chevron.com
Treasurer	Kathy Smith	kathysmith@pacseis.com
Webmaster	Ivan Aburto	Ivan.Aburto@crc.com



WHERE BETTER BECAME BEST

BRYAN BELL HAS OPENED
A NEW FULL SERVICE
CORE ANALYSIS FACILITY IN
BAKERSFIELD

VISIT US ON THE WEB
www.bestcoreservices.com

Or Stop by at

4031 Alken Street Suite A1
Bakersfield CA 93308
Phone: (661) 835-6001

Contact Bryan Directly

Cell: (661) 496-2654
bryan@bestcoreservices.com

COMING SOON

Anomalies

✚ Pioneering Women in Petroleum Geology: 1917-2017

To be released April 1, 2017, *Anomalies* represents a deep foraging into the unrealized and near lost history of women that began in 1917 their 100 year journey as petroleum geologists.

“Robbie Gries and her contributors have created a remarkable account of early women in petroleum geology. The book represents a “deep dive” into the lives, accomplishments, triumphs, and, even, terrors, of early women professionals. It displays impressive scholarship, and reflects four years’ efforts to source histories of these largely forgotten women professionals.

An astounding network of women professionals, formed by need, strengthened by time, constituting an amazing support system. Robbie has done an amazing, multi-year research effort in uncovering hundreds of early petroleum geologists, active in many countries, whose early efforts are now recorded for our belated appreciation.

A delightful, hopeful, sense of progress is conveyed by the book, as the intense survival stories of early women geologists, give way to a prideful modern acknowledgement of the importance of women petroleum geoscientists in our modern petroleum industry.

The book should be read by every petroleum geologist, geophysicist, and petroleum engineer; partly for the pleasure of the sprightly told adventures, partly for a sense of history, and, significantly, because it engenders a proper respect towards all women professionals, forging their unique way in a “man’s world”.

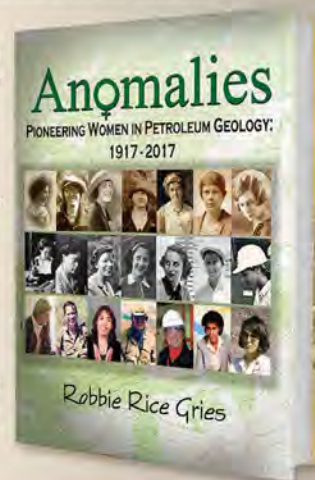
Buy this book! It will renew your pride in being a petroleum geologist, and it will enlighten you on the struggles of our wonderful women associates as they followed their professional dreams.”

– Marlan Downey, Past President of AAPG, CEO Roxanna Petroleum

“*Anomalies* celebrates the inspiring achievements of an intrepid group of pioneering women that have laid the groundwork for female geoscientists today. Robbie Gries provides an entertaining and informative narrative of 100 years of trailblazers that is enriched by excerpts from diaries, letters and interviews. The women in these pages were true scientific contributors and innovators at a time when women were just emerging into the growing field of petroleum geology. This is a must read for any historian of the oil patch, as it provides the only comprehensive record of the hidden history of these ground-breaking women.”

– Allyson Anderson Book,
Executive Director - American Geosciences
Institute

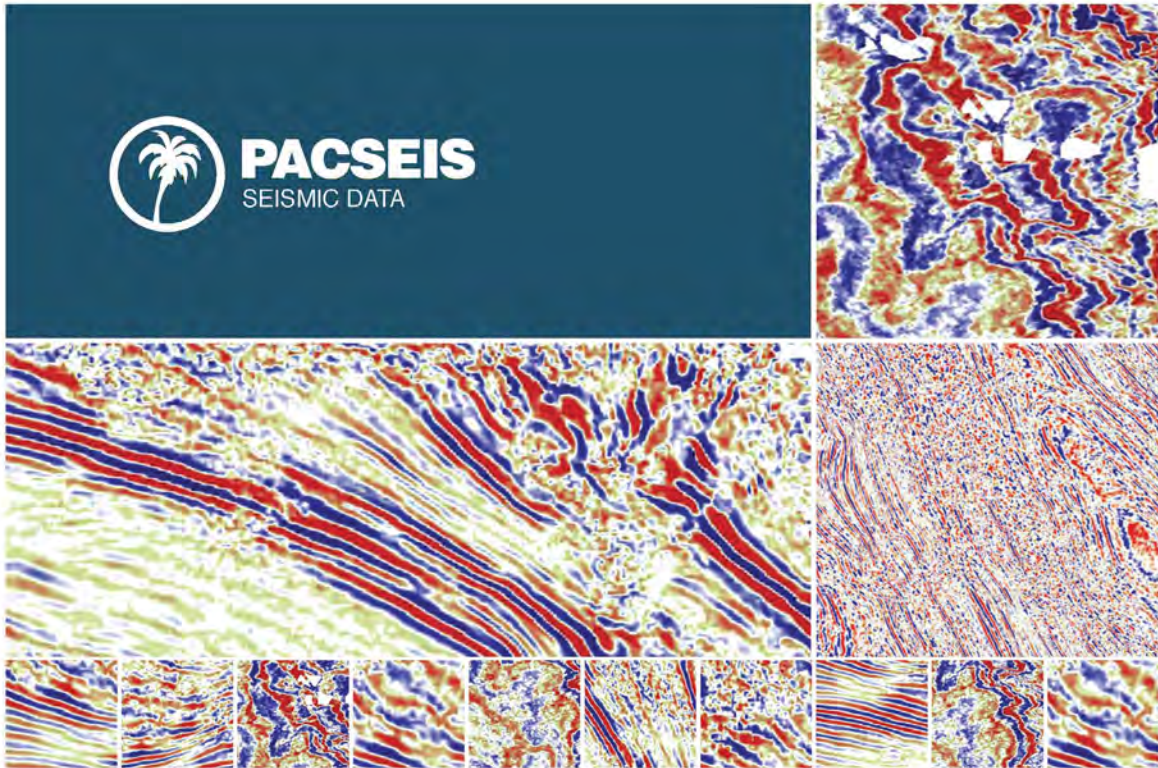
Once released, the book can be ordered from the AAPG Store for \$50 plus shipping and handling. Please e-mail publications@AAPG.org expressing your interest and we will contact you as soon as the book is available. Don't want to wait? Visit the AAPG Center at the 2017 ACE meeting to purchase your copy.





PACIFIC SECTION AAPG
P. O. Box 1072
BAKERSFIELD, CA 93302

PRESORTED
STANDARD
U.S. POSTAGE PAID
BAKERSFIELD, CA
PERMIT NO. 1163



PACIFIC SEISMIC COMPANY

The leader in subsurface information

RESOURCES THAT DELIVER THE DIFFERENCE

- One of the largest seismic databases available for license
- Seismic available for immediate license
Over 500,000 line miles of 2D data located in domestic United States (onshore & offshore)
- 2,500 square miles of 3D surveys

RECENTLY ACQUIRED SEISMIC DATABASES BY PACIFIC SEISMIC CO.

- Chevron USA California, OXY USA Nationwide (including Arco & Enron)
- Santa Fe energy, TXO, Cities Service Oil & Gas Nationwide
- Southern Pacific, PG&E/ NGC, SOHIO

PACIFIC SEISMIC COMPANY | Your Full-Service Seismic Brokerage & Acquisition Company

EXPLORATION CONSULTING

PROJECT DEVELOPMENT

Tel (661) 322-1171 | Fax (661) 322-1181 • www.pacseis.com | Bakersfield | Houston