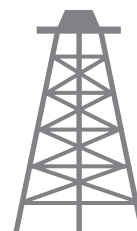




# Pacific Petroleum Geology



NEWSLETTER

Pacific Section • American Association of Petroleum Geologists

March & April 2017

## CALL FOR PAPERS

**Submission Deadline  
12 March 2017**

*Extended Deadline!*

**To Submit Abstract & Register,  
Visit Our Website**

**Registration is now open!**

Check out our great short courses,  
field trips, local trips and guest program!

**2017 AAPG**  
Pacific Section Annual Meeting  
**21-24 May • Anchorage, Alaska**  
Innovating the Future: Discovery to Recovery

**[www.psaapg2017.com](http://www.psaapg2017.com)**



**2017 PSAAPG, PS-SEPM,  
& PCS-SEG Convention.  
Anchorage, Alaska &  
PSAAPG Officer Candidates.**

[www.psaapg.org](http://www.psaapg.org)

# THANK-YOU

## California Resources Corporation.

For your continued support of local students.  
Your sponsorship funded many student dinners  
at SJGS scientific talks in 2016-2017.



### PAYZONE INC.

*Geological, Geophysical, and Petrophysical Consulting Services for the Petroleum Industry* 661-387-1715

- Accurate, consistent fieldwide reservoir properties for modeling, OIP, and improved heat management in thermal projects
- Old E-Log interpretation

- Image log interpretation and integration with petrophysical analysis
- 2D/3D seismic interpretation, expertise in old 2D data
- "Mystery logs" and other difficult log problems

Our petrophysical models for siliceous shales and California sands are based on over 30 years of experience with these rocks, including core, log, and lithology data from every basin in the state

Deborah Olson, President  
dmolson@payzoneinc.com  
661-747-0375

***Have a log question? Give us a call!***

[www.payzoneinc.com](http://www.payzoneinc.com)

Tom Howard, Image Analyst  
tomh@payzoneinc.com  
832-407-2862

# ROCK SOLID EXPERIENCE



**Core Lab**  
RESERVOIR OPTIMIZATION

[www.corelab.com](http://www.corelab.com)  
**661-325-5657**

© 2013 Core Laboratories.  
All rights reserved.

## 2016-2017 Officers

President	Robert Horton 661-599-7380 rhorton@csu.edu president@psaapg.org
President-Elect	Mike Nelson 805-535-2058 mnelson@dcorllc.com president-elect@psaapg.org
Vice President	Emily Fisher 661-665-5571 EAFisher@aeraenergy.com vicepresident@psaapg.org
Secretary	Becca Schempp 661.381.0478 Becca.Schempp@crc.com secretary@psaapg.org
Treasurer 2016-2017	Lisa A. Alpert 661- 665-5557 laalpert@aeraenergy.com treasurer@psaapg.org
Treasurer Elect 2016-2017	Simmie Chehal 661- 665-5738 SKChehal@aeraenergy.com treasurer@psaapg.org
Past President	Kurt Neher 661-412-5203 kurt.neher@crc.com president@psaapg.org
Editor-in-Chief 2014-2016	Vaughn G. Thompson 661-633-4748 vaughn.thompson@crc.com editor@psaapg.org

## Staff

Web Master	Taylor Carrasco 562-624-3259 Taylor.Carrasco@crc.com
Membership Chair	Greg Thompson 661-364-3052 greg.thompsn@gmail.com
Publications Chair	Larry Knauer 661-205-4463 laknauer@aol.com
Advisory Council Representative 2015-2018	Tony Reid 661-412-5467 Tony.Reid@crc.com

<b>4</b>	<b>President's Message •</b>	<i>Robert Horton</i>
<b>5</b>	<b>In Memoriam •</b>	<i>Thomas L. Wright</i>
<b>6</b>	<b>In Memoriam •</b>	<i>Bill Edmondson</i>
<b>7-8</b>	<b>Member Article •</b>	<i>Dan Schwartz</i>
<b>9</b>	<b>2017 PSAAPG Convention •</b>	<i>Chairs Note</i>
<b>10</b>	<b>2017 PSAAPG Convention •</b>	<i>Luncheons</i>
<b>11</b>	<b>2017 PSAAPG Convention •</b>	<i>Social Events</i>
<b>12-13</b>	<b>2017 PSAAPG Convention •</b>	<i>Field Trips</i>
<b>14</b>	<b>2017 PSAAPG Convention •</b>	<i>Technical Session</i>
<b>15</b>	<b>2017 PSAAPG Convention •</b>	<i>Workshops &amp; Short Courses</i>
<b>17-19</b>	<b>PSAAPG Election •</b>	<i>Officer Candidates</i>
<b>20-22</b>	<b>Member Society News •</b>	

- CONTACT THE EDITOR at editor@PSAAPG.org
- Images (graphics, photos, and scans) must be at least 300 dpi resolution. Text should be at least 600 dpi.
- Scanned photos, illustrations (line art) or logos should preferably be submitted as a .tif, .gif, or .bmp; .jpeg is OK.

## Advertising Rates

<i>Members</i>	<i>Single Issue</i>	<i>Year (6 issues)</i>
<i>Full Page</i>	\$200.00	\$800.00
<i>Half Page</i>	\$125.00	\$525.00
<i>Quarter Page</i>	\$75.00	\$325.00
<i>Business Card</i>		\$125.00

2017 Advertisements reduced price by 50%  
due to drastic drop in oil prices

## Societies Free Advertising:

*Convention: Unlimited Space in PSAAPG Newsletter*  
*Societies: 1/4 Page in AAPG Explorer*



## Dear Pacific Section AAPG Members,

As we enter the new year there is reason for optimism. The deal OPEC made to limit production seems to be holding and oil prices have stabilized, to the point that there are reports of renewed activity on the domestic side of the business. Construction has resumed on the Dakota Access pipeline and the Keystone XL pipeline has been given the green light. There seem to be fewer layoffs, at least locally, than what we experienced a year ago, and some companies have begun hiring geoscientists! In the past, downturns in the oil industry were usually followed by increased enrollments in graduate geoscience programs but reductions in the number of undergraduates entering the geosciences. It is probably too early to tell what effect the most recent downturn will have, but the latest data that I have seen suggests that, so far anyway, geoscience enrollments are stable. This is important going forward as the retiring baby-boomers need to be replaced over the next few years. And, though it is of little comfort to anyone out of work, the low price of oil has certainly had positive effects on other aspects of the economy (such as low airfares from the west coast to Alaska).



Meanwhile, the upcoming convention in Anchorage is looking good. Field trips are filling up, abstracts are coming in (deadline has been extended to March 12), and the technical and social programs look to be excellent. Hopefully, as many of you as possible will take advantage of the low airfares and make the journey north, and as always I want to encourage everyone to consider submitting an abstract for a talk or poster.

Finally, I'd like to mention the upcoming PSAAPG Executive Committee elections. The Elections Subcommittee has put together a great list of candidates whose bios are included in this issue. Ballots will be sent out later this spring. It's good to know that no matter which candidates get elected, PSAAPG will be in good hands going forward.

### Robert Horton

PSAAPG President, 2016-2017

**Marty Hall**  
Program Development Manager  
Multi-Client Services

7765 Windwood Way  
P.O. Box 549  
Parker, CO 80134  
USA


P: 720 851.6152  
C: 303 885.8860

**Geokinetics™**  
geokinetics.com  
marty.hall@geokinetics.com

**Geolog**

DAVID BURROUGHS  
President

GEOLOGICAL LOGGING INC.  
9229 Beatty Drive, Suite B  
Sacramento, CA 95826  
(916) 452-9570 Tel  
(408) 307-4653 Cell  
(916) 452-9573 Fax  
david@geologinc.net  
www.geologinc.net



RESERVOIR CHARACTERIZATION  
GEOLOGY  
PETROPHYSICS  
DATABASE MANAGEMENT  
DIGITIZING & SCANNING

**EarthQuest Technical Services, LLC**  
*David R. Walter*  
drwalter@eqtservices.com  
www.eqtservices.com

P.O. Box 1697  
Bakersfield, CA 93302  
661-321-3136

**GREGORY GEOLOGICAL SERVICES**

**Glenn J. Gregory**  
Calif. Prof. Geol. #3676

8804 O'Meara Ct.  
Bakersfield, CA 93311  
glenng@bak.rr.com

(661) 747-5065

## Thomas L. Wright

November 17, 2016

The Pacific Section lost one of its most stalwart members and force in California geology on November 17, 2016 when Thomas Lawton Wright passed away suddenly in San Anselmo, CA from a stroke at the age of 86. He was a New Year's Baby born on January 1, 1930 in San Diego and grew up in Glendale. Tom received his Bachelor and Master of Science degrees in geology at Stanford University, and joined the Standard Oil Company of California (SOCAL) in 1952. He spent most of his 34 year career with SOCAL, now Chevron Corp., working in California and Alaska.



Fresh out of Stanford, Tom did field geology in Salt Lake City, UT then Salinas, CA and Yakima, WA followed by five years in Seattle, WA. This was in the early days of SOCAL's Alaskan exploration program and included being Field Party Chief from 1958-1960 on the North Slope. Those were the days of summer rock collecting and mapping using helicopters or, in tight budget years, on foot with only fixed wing support. The remaining nine months of the year were spent in photo-geology and map preparation working up the field traverses. This was almost a decade before the Prudhoe Bay discovery.

In 1961, Tom was transferred to Los Angeles where in time he became a true expert in the geology of the Los Angeles basin. He participated in discoveries in and near the East Beverly Hills oil field in the urban downtown and west Los Angeles and Beverly Hills area. In a portent of things to come in his career, Tom did site investigations and provided testimony following the Baldwin Hills Dam collapse in 1963.

After moving to the Bay Area in 1971 and working for seven years on South American projects in the San Francisco office of Chevron Overseas Petroleum Inc., Tom moved into environmental and public affairs geology for Chevron. This included work on offshore California and then broadening into hydrogeology and environmental geology. During these years, he served as exploration liaison between the Western Oil and Gas Association (WOGA) and the Outer Continental Shelf Coastal Zone Management Committee of the API. He represented Chevron and the industry in numerous hearings and negotiations covering offshore drilling, including several programs with WOGA, the National Ocean Industries Association and many other joint industry programs. In these activities, Tom encountered many people ignorant of our profession and antagonistic to our industry. With his unfailing good humor and highly knowledgeable professional background, no one could have better represented the industry's side than Tom Wright.

After retirement from Chevron in 1986, Tom did not slow down. He continued many outreach activities, including working with the Southern California Earthquake Center (SCEC), contributing his knowledge of the Los Angeles basin and arranging many industry seismic lines to be contributed to the SCEC. This work also led to establishing "The Center for LA Basin Subsurface Geology at Cal State University at Long Beach which was dedicated and "open for business" on May 29, 2001. These efforts involved countless hours of travel between his home in Northern CA and to Southern CA plus time for numerous meetings. Tom finally found time in his "retirement years" to write his 100 page paper, "Structural Geology and Tectonic Evolution of the Los Angeles Basin, California", which was published in 1991 in AAPG Memoir 52 and which remains the definitive reference on Los Angeles basin structural geology. It has been referred to as the "bible" for geoscientists working on earthquake hazards and, importantly, its application to and history of oil and gas exploration and development in the basin.

Tom was always active and dedicated to our professional societies on both National and local State levels. He joined national AAPG in 1952 and served on a number of Committees including Visiting Petroleum Geologist, House of Delegates representing the Northern CA Geological Society, Business and was very active on the Environmental Geology Committee, serving as Chair 1974-77, organizing six symposia, and was an important proponent in the creation of the AAPG Division of Environmental Geology (DEG). Tom served on the DEG Publications, Membership, Environmental Practices Committees and on the Advisory Board. He was a CA Professional Geologist # 425 with the CA State Board of Registration for Geologists and Geophysicists and served on the Board's Technical Advisory Committee. For his dedication to these strong propitious efforts, Tom was given AAPG's Distinguished Service award in 1993, Certificate of Merit in 1996, DEG Honorary Membership in 1999 and in 2000 received AAPG's third highest Award, the Michael T. Halbouty Memorial Human Needs Award, to honor the outstanding application of geology to the benefit of human needs and to recognize scientific excellence.

*(Continued on next page)*

Tom was President of the Northern California Geological Society in 1974 and remained an active participant in NCGS activities and field trips right up to his passing. For the Pacific Section, he contributed for over three decades and did everything including Editor, Treasurer, Finance chair, Field Trip coordinator, Environmental chair, Vice-president and, in 1980-81, President. This outstanding service was recognized in 1989 with the Section's highest honor, the Honorary Life Membership Award.

Tom met his wife, Louise, in a chemistry lab at Stanford and they soon were married. They had five children and eight grandchildren and, so far, two great grandchildren. Louise passed away in 2009 after 58 years of marriage. He remained very involved with his family and will be greatly missed by them and all who knew him. Tom leaves a big hole not only in the ranks of premier California geologists but in the remembrances of his hundreds of friends.

Donald W. Lewis  
Bob Lindblom

---

## William F. Edmondson

June 2, 1930 - January 5, 2017

Bill Edmondson was born June 2, 1930, in Pasadena, CA, to John and Reta Edmondson. He grew up in South Pasadena. He was preceded in death by his parents, his brother Jack, and previous wives Ellen (McLaughlin) and Carolyn (Bitters). Carolyn was the mother of their two daughters, Lisa and Susan, and died in 1995 shortly after moving to Colorado Springs. Bill is survived by his wife, Barbara Schaefer, daughters, Susan Edmondson and Lisa Ruhnow, Lisa's husband Roger Ruhnow and grandsons William and John Ruhnow.

Bill was an active Boy Scout and achieved the rank of Eagle Scout. He enjoyed summers at Balboa Island in the years prior to World War II. Bill attended the California Institute of Technology and received a Bachelor of Science degree in geology in 1952. He worked for the Superior Oil Company from June 1952 until February 1954. He then served in the U.S. Navy until 1957, when he then returned to work with Superior Oil Company. While in the Navy he spent two years in the Naval Ordinance Facility in Yokosuka, Japan.

Bill formed a business partnership with Howard Reynolds in May 1959 and they were partners for 13 years. For the remaining years of his career he was a consulting geologist during which time he was on retainer with various smaller oil companies working out of his office in Bakersfield, CA. His work as a petroleum geologist largely was devoted to defining areas to be drilled for natural gas in the Sacramento Valley of California. His work helped establish production in several fields.

Bill was active in professional activities including field trips and geological conventions. He gave numerous professional talks and authored several articles in professional publications. He served as president of the San Joaquin Geological Society 1974-75 and was an Honorary Life Member of the Pacific Section of the American Society of Professional Geologists.

Bill met Barbara Schaefer in the summer of 2000 when their respective Food for Thought groups merged into one group. They were married in October 2005. Bill had not traveled outside of California very often, but Barbara loves to travel so they had many trips through the Rocky Mountains, Utah, Yellowstone, the Black Hills, and the desert areas of the Southwest as well as visits to Barbara's cousins in Wisconsin and Michigan.

On Monday mornings, Bill volunteered at Westside Cares. Prior to that, he volunteered at Pikes Peak Hospice and Palliative Care and Ecumenical Social Ministries. Bill was an active member of First Congregational Church and enjoyed meetings of PIL-LAR's Philosophical Cafe.



## Newsletter article for the Pacific Section AAPG Newsletter. Dan Schwartz, AAPG VP Sections.

In January, 2017 I had the pleasure of giving a presentation at the San Joaquin Geological Society meeting in Bakersfield. The topic of the talk and the focus of this article was “How to make AAPG relevant to the members?” I was very pleased with the comments and suggestions received from the audience. The feedback ranged from the need for better communications via the AAPG web page and new social media, to better engagement between the SJGS and the national organization. The bottom line was a directive to me to make the changes needed to ensure the continuation of the organization, ensure that AAPG does not forget that its main strengths are society and section members, and that members want to have a place to get together socially and technically, discuss what is going on in the business, and to encourage engagement between older and younger members. With these factors in hand, we can ensure future membership and member participation. When I ran for VP Sections of AAPG, I had the goal of improving the relationship between AAPG and the affiliated Sections and Societies. In my view, to get members more engaged, AAPG needs to deliver useful goods and services in a welcoming environment and to foster the science of the energy business while growing personal networks and sharing knowledge. AAPG is currently in challenging financial straits and the member experience is more likely than not, going to change so we can survive the prolonged downturn.



It may be useful to provide some background. AAPG is a 100 year old association comprised of volunteer members and supported by professional staff, mainly based in Tulsa. AAPG engages with its members via their affiliated local societies, US Sections, International Regions, and globally resourced Divisions, Committees and interest groups. Members are represented in the National AAPG by their Advisory Council (AC) from the Sections, Regions, and Divisions; and the House of Delegates (HoD) from the local societies. AAPG members elect an Executive Committee (EC) to ensure the organization is in good fiscal and technical condition. The current EC is comprised of President Paul Britt, President-Elect Charles Sternbach, VP of Regions Peter Lloyd, Treasurer Marty Hewitt, Editor Barry Katz, Secretary Heather LaReau, Head of HoD Jim McGhay, and me as VP of Sections. The EC's goals are to advance members' careers and interests, promote involvement and opportunities for younger professionals within AAPG, and advance global membership growth while maintaining professional standards and ethics. The Pacific Section AAPG has been in active since 1924. Our several hundred members belong to one of seven local Affiliated Societies (Alaska Geological Society, Northwest Energy Associates, Sacramento Petroleum Association, Northern California Geological Society, Coast Geological Society, San Joaquin Geological Society, and the Los Angeles Basin Geological Society). If we consider what was going on in the west in the 1920's, we can imagine that ethics and discipline were considerations along with sharing of technical information during the boom years in the California oil patch.

There are three main products that AAPG is mandated to provide to its members, a technical journal called the AAPG Bulletin, a monthly newsletter called the Explorer, and an annual convention (ACE). All other products and services (the International Convention and Exhibition, Geo-Technical Workshops, Unconventional Resource Technology Exhibition and Convention, DataPages, Search and Discovery, AAPG Special Publications, the Imperial Barrel Award, Student Chapters, insurance, etc.) have been added to the mix over the past century. Assessing the entire product and service portfolio has been a focus of attention from the EC and the AC, and based on an in-depth AC assessment, an EC sub-committee is making recommendations on what to retain and what to reduce or eliminate.

There are two groups within the AAPG that work with the EC: The HoD and the AC. The HoD is responsible for the Constitution and Bylaws, Rules and Procedures of the Association. It is also responsible for membership. It represents members via their affiliated Society and evaluates applications for membership. While science is the key focus of today's AAPG, since its founding in 1917, professional ethics, discipline and behaviors have been areas of attention. The AC serves in an advisory capacity to the EC on matters involving ethics and discipline, long range planning, constitutional review, nomination of officer candidates, nomination of honors and awards candidates, and special projects requested by the EC. When a member is recognized by their peers for contributions to AAPG, it is the AC that makes

*Editor's Note: Figure 2 on page 7 of the 2017 Jan-Feb PPG was incorrectly printed. The online version has the corrected image. My apologies to the Author.*

*(Continued on next page)*



the recommendation, gathers the necessary supporting documentation, and presents the case to the EC. When AAPG is facing challenging times, it is the AC that provides the EC with scenario planning and alternatives to be considered to address those challenges.

Currently, declining membership and convention revenue are the main issues facing AAPG. In the past ten years, AAPG has been unable to convert more than a few hundred students to full members despite growth in student chapters and the Imperial Barrel Award program. With the current oil prices and the increase in lay-offs, retirements and curtailed hiring, we find that companies are cutting back on their support for membership, sponsorship, and exhibitor participation at local, regional and national meetings. Total membership has fallen to ~34,000, dropping 3000 in 2015-2016 alone. Voting membership dropped from 16,300 in 2011 to 14,700 in 2017. AAPG makes most of its money not from memberships or convention registration, but from sponsorships and exhibitors. Events account for 55% of AAPG revenue. Income from advertising, grants, investments, and service fees (NAPE/OTC/IPTC) account for 22.5% of revenue. Products and services (Bulletin, Publications, Education, DataPages) account for 10% of revenue. Membership accounts for 12.5% of annual revenue. For 2016-17, AAPG losses exceeded \$3 million. The EC has endorsed using rainy day funds to cover short falls from poorly attended or sponsored events. Some education related cost over-runs have had to be covered by the AAPG Foundation.

To address the financial problems facing AAPG, the 2015-16 EC made tough calls on staff levels and operating expenses. Reductions in staff and the closing of some offices have cut operating expenses, reducing them to 2008 levels. The EC asked that the AC provide help to establish the 2017-18 budget and business plan. The AC ranked the activities in the organization on a cost-benefit basis. The ranking enabled the EC to see what items to retain and improve upon as well as those to cut. You will be seeing some clear changes going forward: The Washington, D.C. office has been closed and the London ICE 2017 is currently the last one on the calendar. Houston has historically been the biggest revenue generator for the AAPG. Recent meetings in Pittsburg, Denver, and Calgary were financially challenged and profits from the ACE have declined. Future ICE meetings and ACE meetings in some venues are under evaluation.

As I prepare this article I have returned from NAPE and an EC meeting where we discussed the recommendations to further cut operating costs and low return programs from the AAPG portfolio. We agreed to rejuvenate the GeVO committee which is charged with identification of future convention sites, with the added remit of developing a solid business case for each venue. Given the belt tightening, we are also looking forward to the 100 year anniversary ACE meeting in Houston and trying to ensure it is a technical and financial success.



**WAVES OF CHANGE**  
OCEANS OF OPPORTUNITY  
Society of Petroleum Engineers  
Western Regional Meeting  
**2017A**



**Society of Petroleum Engineers**

Western Regional Meeting in Bakersfield, California from April 23- April 27, 2017. The event will be held at the Marriott Convention Center in Downtown Bakersfield and is sure to be an event to remember!

We will have:

- Panel Sessions with Executives, Leaders, and Regulatory Experts. Representatives from the DOGGR, State Water Board, and BLM will headline an exciting Regulatory Panel.
- Over 100 technical papers will be presented (Drilling, Production, Reservoir, Facilities, Information Technology, and Health and Safety).
- Steam management, water flooding, artificial lift, and financial education and classes.
- Keynote address from 2018 SPE President, Darcy Spady.

[www.spewrm.org](http://www.spewrm.org)

Keith Kostelnik (SJV SPE 2016-2017 Chair, 2017 WRM Chair)



## A Welcome Letter from the 2017 Conference Co-Chairs.

We welcome you to attend the AAPG-Pacific Section Annual Meeting May 21-24, 2017 in Anchorage, Alaska!

It has been six years, or 2011 since this event was last held in Anchorage. Oil prices and our industry are currently experiencing a significant downturn but nonetheless Alaska remains one of the most exciting and promising locales for geologic study and oil and gas exploration and development. Hence the theme for this year's PSAAPG conference: "Innovating the Future, Discovery to Recovery".

The PSAAPG 2017 conference will have a technical session that includes 2 ½ days of talks and posters. Before and after the main conference you may choose to attend short courses, two core workshops or one of the ever popular Alaska field trips. If you choose to attend one of the field trips you will be treated to Alaska geology up close with learning coordinated by knowledgeable trip leaders who are among the best in the field. Field trips are planned to the Brooks Range, the West side of Cook Inlet, the Matanuska Valley and the Kenai Peninsula. You may sign up for workshops and field trips when you register for the main conference.

Recognizing that these are challenging times in the oil and gas industry, we have tiered registration pricing to encourage all to attend. We have also secured great hotel rates for our members and there will be guest activities and discounts for those of you attending with a friend or spouse.

Anchorage days in May are long and the weather is more often than not beautiful. Out of town attendees and guests will be treated to Alaska at its' finest. We encourage visitors, both first time and return travelers to spend a few extra days in The Great Land and take in the sights and perhaps enjoy the wildlife.

We are honored to serve as general chairs for this event and look forward to seeing you in May!

Sincerely,

Monte Mabry and Tiffany Piercey

AAPG Pacific Section Meeting Co-Chairs



**digital creations**

HOME MOVIES TO DVD,  
PHOTO GIFTS, RESTORATIONS  
& MORE

1705 20th St.  
(661) 322-5552  
digitalcr1@gmail.com

 like us on facebook  
digital creations.bakersfield

Retirement Planning  
College Savings Plans  
Financial Planning

**Morgan Stanley**

**The Hopps Group Lydia Hopps & Benjamin Hopps CFP®**

Investment Management Consultant  
Senior Vice President  
Financial Advisor  
300 Esplanade Dr., 10th Floor  
Oxnard, CA 93036  
1 805 278-3609

[www.morganstanleyfa.com/thehoppsgroup/](http://www.morganstanleyfa.com/thehoppsgroup/)

© 2014 Morgan Stanley Smith Barney LLC. Member SIPC.  
CRC897562 03/14

**CHARPENTIER**  
WEALTH STRATEGIES

**Debbie Charpentier**

Comprehensive Financial Planning

661-322-5204

[Debbie.Charpentier@LFG.com](mailto:Debbie.Charpentier@LFG.com)

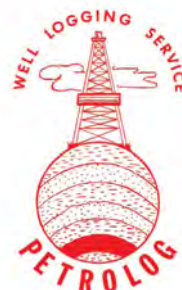


Debbie Charpentier is a registered representative of Lincoln Financial Advisors Corp.

Securities and investment advisory services offered through Lincoln Financial Advisors, a broker-dealer (member SIPC) and registered investment advisor. Insurance offered through Lincoln Marketing and Insurance Agency, LLC and Lincoln Associates Insurance Agency, Inc. and other fine companies. Charpentier Wealth Strategies is not an affiliate of Lincoln Financial Advisors Corp. CRN1387451-010816

[www.CharpentierWealth.com](http://www.CharpentierWealth.com)

CA Insurance License #0763281



**PETROLOG**

PETROLOG, INC.

**JOHN T. WILLIAMS**  
Geologist, P.G. #5899, President

**Geological Well Logging**

P.O. BOX 7028  
VENTURA, CA 93006  
[jtw@petrolog-geological.com](mailto:jtw@petrolog-geological.com)

(805) 642-2847 • Fax(805) 980-5569 • Cell(805) 231-3793

**MONDAY, MAY 22***All Convention Luncheon*

The key note speaker for this year's All Convention Luncheon is Rusty Riese!  
Join us as Rusty updates us on his infamous 'Climate Change: Facts and Fiction.'

**Cost:** \$55 per person

**TUESDAY, MAY 23***AAPG Honors & Awards Luncheon with additional luncheon speaker*

**Where:** Howard Rock Ballroom B

**When:** 11:30-1:00

**Cost:** \$55 per person

**WEDNESDAY, MAY 24***AAPG Divisions Luncheon: DPA, DEG & EMD*

**Where:** Howard Rock Ballroom B

**When:** 11:30-1:00pm

**Cost:** \$55 per person

**CLIMATE CHANGE: FACTS & FICTIONS***W.C. Rusty Riese Adjunct Professor Rice University*

The past several years have seen numerous opinion pieces, editorials, and technical papers regarding climate change in the pages of many publications, both scientific and secular. Although both sides of this now almost religious debate were represented, few if any real facts or data are provided to support the opinions expressed. The public deserves more, and specifically deserves to be properly informed. The heat content of the atmosphere has remained largely unchanged since 1995. Data prepared and compiled by a number of climate scientists illustrate the wide divergence of climate model projections from what has been occurring: the climate has not been warming any more than would be expected as the world continues to move out of the Little Ice Age. These data have been accepted by the IPCC, whose chair admits that the climate modeling community does not understand what is happening. Water vapor in the atmosphere is a more potent greenhouse gas than CO<sub>2</sub> (McIntyre and McKittrick, 2003). Climatologists have understood this for decades and this is a fact clearly expressed in all climatology textbooks. None of the climate models employed today adequately addresses the influence of water vapor. Cosmic radiation is the source of the particles which cause water droplet nucleation and cloud formation in the upper atmosphere (Laken et al., 2010). Its flux, in turn, is directly influenced by solar activity and the strength of the resulting solar wind. None of the climate models deal with either of these first-order climate influences (Hoyt and Schatten, 1997; D'Aleo, 2013).

The Earth's atmosphere has had far higher CO<sub>2</sub> content many times and for much of the geologic past, and major glacial events have occurred during those times, most notably during the Carboniferous and Silurian. The inescapable conclusion is that CO<sub>2</sub> has no relationship to the temperature of the Earth's atmosphere. This is a conclusion that was reached by many scientists who have looked at ice core data and found that increases in CO<sub>2</sub> in the atmosphere occur several hundred years after temperatures have risen – they do not change in lock-step as has been claimed, and an event 800 years in the future cannot impact events today. These facts allow a number of fictions to be addressed:

- Polar bears will not become extinct if sea ice diminishes. Polar bears were around before the Medieval Warm Period and came through it just fine. A recently published, peer-review study of the Davis Straights in Canada found that not only had the polar bear population increased dramatically since the 1970s, but that the area may have reached its carrying capacity. Good news for polar bears (Peacock et al., 2013).

*(Continued on next page)*

- The evolution which the climate is exhibiting, and which it constantly exhibits, is not causing an increase in violent storms (Figure 2). The frequency of violent tornados (>F3) is similar.
- The changes in climate during the past 100 years have not caused either an increase in flooding or an increase in the number or extent of droughts.
- The number of daily record high temperatures is not at an all-time high. For the past 100 years that was reached in the 1930s during the Dust Bowl.
- Finally, there is not a consensus among scientists that anthropogenic CO<sub>2</sub> is causing climate change. The widely quoted number of 97% of scientists believing in global warming is based on an on-line survey of 10,257 earth scientists. 3,146 replied and all but 77 were “disqualified” by the researchers conducting the survey. Of those, 75 thought that humans were contributing to climate change, thus the 97% number, one that is not particularly robust.

The conclusions to be drawn from examination of these data are four: 1. All of the scary global warming scenarios are based on computer models. 2. None of the models work. 3. There is and has been no scientific consensus, claims to the contrary notwithstanding (Cook et al., 2013). 4. The data which come from our global experiment - the observations we have made - indicate that the climate is evolving and always has evolved continuously. There are no data indicating that people have caused that change: the contributions humans may make to those changes are lost in the noise of natural variability. We need to use this information to stop our regulators and legislators from taking steps and passing laws which will have no effect on the climate we enjoy and can only have disastrous impacts on our economy and the welfare of much of mankind.

## SUNDAY NIGHT: YP & Student Meet n' Greet.

*Sponsored by ConocoPhillips Alaska.*



Students, Young Professionals and Mentors -  
Everyone is welcome!

**WHEN: Sunday, May 21st, 5:00pm to 6:00pm**

**WHERE: The Summit - Top Floor of the Sheraton**

Kick off the 2017 Pacific Section Meeting by attending our Meet & Greet on the top floor of the Sheraton with stunning views of Anchorage! Participants will get paired in small groups and have time to socialize and get to know one another. A great opportunity to expand your geoscience and industry network!

## MONDAY NIGHT: Wine Rocks!

An exciting evening filled with wine and geology! Come and learn about some great wines and some fun geology.

Hosted by Chad Culley from Crush

**WHEN: Monday, May 22nd, 6:00PM to 8:00pm**

**WHERE: LOCATION TBD**



## WEDNESDAY EVENING

Geophysical Society of Alaska (GSA) & Alaska Geological Society (AGS) Annual Scholarship Picnic.

Come join the geoscience community for the Annual GSA/AGS Scholarship fundraiser! Menu includes steak, sausages, burgers, salads and beverages!

Live music and fun activities for kids.

**WHEN: Wednesday, May 24th, 5:00PM to 8:30PM**

**WHERE: Abbott Loop Community Park**





## FIELD TRIPS

### Local Trip #1

Fishing on the Kenai Peninsula. Everyone is welcome!

**OPTION A: Friday, May 19 - Sunday May 21**

**OPTION B: Thursday, May 25 - Saturday May 27**

Alaska's Kenai Peninsula is fishing at its best. Drifter's Lodge sits at the headwaters of the Kenai River in the Chugach Mountains in Cooper Landing.

The drive through the Chugach mountains and onto the Kenai Peninsula is spectacular! Seasoned, professional guides will assist you in your pursuit of Trophy Rainbow Trout, Dolly Varden or King Salmon.

What's included: Transportation to and from Anchorage, 2 nights accommodations at Drifter's, All meals, Full day of fishing on the Kenai River, All gear including rods, waders & tackle

Check out the lodge at [www.drifterslodge.com](http://www.drifterslodge.com)

### Local Trip #2

Matanuska Glacier Walk

**WHEN: Thursday, May 25th, 8:30AM to 6:00PM**

Journey north of Anchorage and explore the Matanuska Glacier's many incredible features, like glacial blue meltwater pools, in Southcentral's beautiful Matanuska Valley.

Includes fully guided tour and transportation to Glacier View, lunch, equipment, transportation to Anchorage.



## PRE-CONFERENCE FIELD TRIPS

### FIELD Trip #1

Transect of a Mesozoic arc and accretionary complex, Indian to Hatcher Pass, South Central Alaska

LEADER: Sue Karl, U.S. Geological Survey

DATE: **Saturday, May 20th**

### FIELD Trip #2

Sedimentology, Reservoir Quality, and Tectonic Setting of Late Miocene-Early Pliocene Gas-Bearing Formations, Upper Cook Inlet, Alaska

LEADERS: Dave LePain & Ken Helmold, Department of Natural Resources

DATE: **Friday May 19 to Sunday May 21**

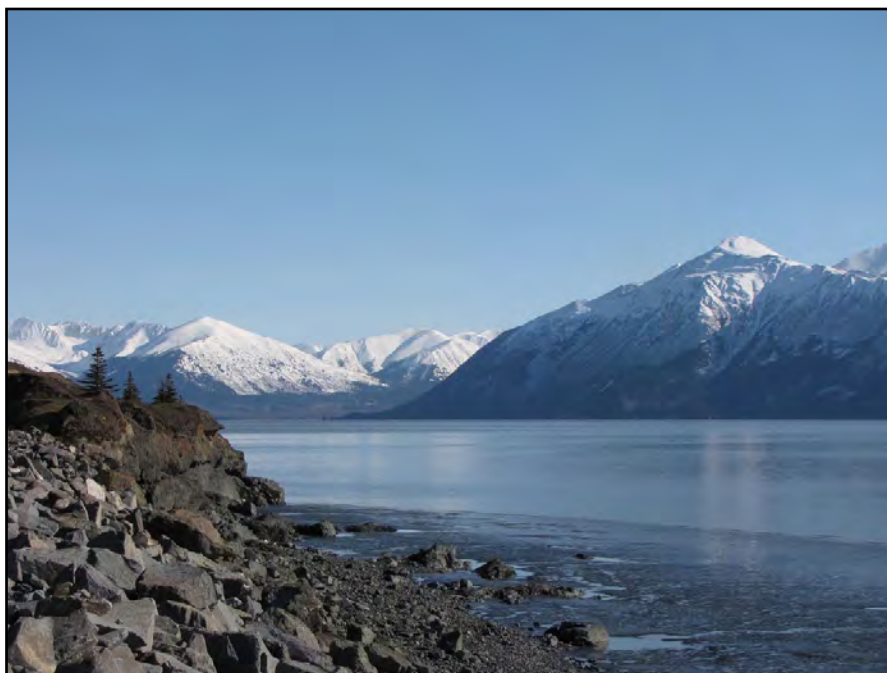
### FIELD Trip #3

Geology of the Dalton Highway, Fairbanks to the North Slope

LEADER: Marwar Wartes, Department of Natural Resources

DATE: **Thursday, May 25th to Sunday, May 28th**

This trip will start in Fairbanks, with overnights in Coldfoot and Deadhorse. Participants are responsible for getting themselves to Fairbanks. Once the trip is complete, they can choose to depart from Deadhorse or Fairbanks.



**The Pacific Section AAPG invites you to present oral presentations  
& posters on the following themes:**

- Regeneration of Mature Fields: Finding new opportunities through innovative engineering
- Unconventional and Low Perm Reservoirs: New ideas for challenging conditions
- Stratigraphy and Sedimentology: Fluvial to Deep-Water Reservoirs
- Geophysics and Petrophysics: From Basins to Pores
- Structure and Tectonics: New Perspectives and Interpretations
- Reservoir Dynamics: Fluids, Faulting and Stress Fields
- Energy and the Environment: Regulations and Water Issues
- Geothermal, Hydrates, Hydrothermal and Uranium Resources
- Biostratigraphy and Paleoclimate: New insights on Geologic Evolution and Climate Cyclicity
- Geochemistry & Basin Modeling: Geohistory, Backstripping, and Source Rock Investigations

**We would also invite you to submit abstracts for the following  
SPECIAL SESSIONS:**

- Sequence Stratigraphy and Seismic Geomorphology: How high resolution seismic is redefining our paradigms
- Developments in Onshore Alaska Exploration and Production
- New Developments in Pacific Exploration: Continental Shelf, Coastal Ranges and San Joaquin Valley
- Frontier Exploration in the Arctic Offshore
- New Research on Alaska North Slope Source Rocks



## TWO CONVENTIONAL CORE WORKSHOPS

**THEME #1:** Brookian Turbidities

**LEADERS:** Bill Morris & Pat Perfetta, ConocoPhillips

**Theme #2:** Brookian Topsets

**LEADER:** Dave Lepain, DGGS

Date and time to follow.

## BASIN MODELING

Introduction to Basin and Petroleum System Modeling

**LEADER:** Allegra Hosford Scheirer, PhD, Stanford University

This course should be attended by industry professionals and students with little to no experience in quantitative basin and petroleum system modeling.

### COURSE OBJECTIVES

Course attendees will learn both the theory and practice of basin and petroleum system modeling in terms of how to construct input and how to analyze output. Attendees will be proficient in the construction and analysis of 1-D basin models by course end. Attendees will also be introduced to the requirements and complexities of higher dimension models.

### KEY TOPICS COVERED

The course starts with a section on the petroleum system concept and the role that basin modeling plays in investigating it. It proceeds with discussions of boundary conditions, geohistory analysis, interpretation of organic geochemistry for basin modeling, petroleum migration, output analysis, and model calibration. Theoretical concepts will be illustrated with hands-on exercises involving real sedimentary basins (“case studies”). Input data for all lab exercises are in the public domain.

### REQUIRED MATERIALS

Each attendee will need to bring a laptop and mouse and will either need to download software as instructed before the course or in the half hour before the course officially begins.

### COURSE DATES

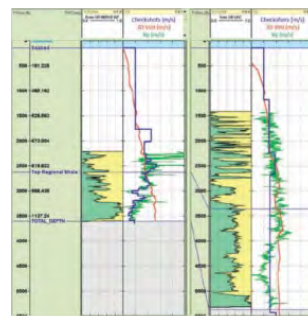
Saturday, May 20 & Sunday, May 21

## PORE PRESSURE

Define, Understand and Predict Pore Pressure Uncertainty

**LEADERS:** Edward Hoskin & Stephen O'Connor, IKON Science

Date and time to follow.



**Save the date!**

**SPRING 2017!**

# **“THE WOOLLEY”**

**18th ANNUAL CGS  
GOLF TOURNAMENT & BBQ**

**Friday, May 5, 2017**

**This Year on: CINCO de MAYO**



**PROVIDING SCHOLARSHIPS  
IN THE NAME OF JOHN J. WOOLLEY  
THROUGH THE  
COAST GEOLOGICAL SOCIETY  
(an affiliate of Pacific Section AAPG)**

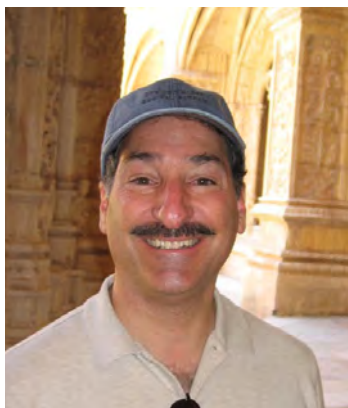
**ELKINS RANCH GOLF COURSE – 1386 Chambersburg Rd, Fillmore, CA**

- **GOLF – “SCRAMBLE” Format – and Festive BBQ Dinner!**
- **Shotgun Start! On-Course Contests! Prizes! Raffle! Awards!**
- **Sponsorships are available!**

**Sponsorship and entry forms are available on the CGS web-site:  
[www.coastgeologicalsociety.org](http://www.coastgeologicalsociety.org)**

## President-elect

### Richard (Rick) Behl, PhD



#### EDUCATION

- University of California, San Diego, B.A., Chemistry and Earth Sciences, 1978
- University of California, Santa Cruz, Ph.D., Earth Sciences, 1992
- University of California, Santa Barbara, Post-Doctoral Fellow, 1992-1995

#### EMPLOYMENT

- 2016-present, Chair, Department of Geological Science, California State University, Long Beach
- 2011-present, Director, MARS Project (Monterey and Related Sediments)
- 1995-present, Assistant->Associate->Full Professor, Department of Geological Science, California State University, Long Beach
- 1978-1987, Mudlogger, petroleum and geothermal industries; Core Laboratories, Inc., R.F. Smith Geothermal, Exploration Logging, Inc., and Epoch Well Logging, Inc.

#### PRIOR SERVICE

- Society for Sedimentary Geology (SEPM) Excellence of Oral Presentation Award, 1990.
- Distinguished Lecturer of the American Association of Petroleum Geologists, 2003-2004.
- Distinguished Faculty Teaching Award, California State University, Long Beach, 2004.
- Invited Instructor, UNESCO Austral Summer Institute, Dichato, Chile, 2007.
- Distinguished Educator Award, American Association of Petroleum Geologists, Pacific Section, 2010.
- Fellow, Geological Society of America, 2012.
- Honorary Membership, Society for Sedimentary Geology, Pacific Section, 2013.
- President-Elect, President, and Past-President, Pacific Section, Society for Sedimentary Geology (SEPM), 2005-2008
- Technical session Chair or Co-Chair, Short-course Coordinator, Convener, or Field Trip Leader, Pacific Section and national AAPG/SEPM meetings; 1998, 2000, 2001, 2003, 2006, 2007, 2008, 2011, 2012, 2013, 2014, 2015.

### Plamen Ganev, PhD



#### EDUCATION

- Anderson School of Business, University of California Los Angeles, MBA (Corp. Strategy and Finance), 2016
- University of Southern California, Los Angeles, Ph.D., Geology, 2011
- Whittier College, B.A., Geology and Economics, Summa Cum Laude, 2002

#### EMPLOYMENT

- 2016-Present, Strategic Planning and Portfolio Analyst, Aera Energy LLC, Bakersfield, CA
- 2015-2016, Strategic Business Development Geologist, Aera Energy LLC, Bakersfield, CA
- 2014-2015, Production Geologist, Aera Energy LLC, Bakersfield, CA
- 2011-2014, Exploration Geologist, Aera Energy LLC, Bakersfield, CA
- 2012, Adjunct Faculty, Geology Department, Santa Monica College, Santa Monica, CA

#### PRIOR SERVICE

- General Co-chair, PS-RMS AAPG Convention, Las Vegas, NV, 2016
- Membership Chair, PSAAPG., 2012-2014
- Committee Co-chair, Visiting Geoscientist Program, AAPG., 2012-2014
- Session Chair, AAPG ACE Meeting, Pittsburgh, PA., 2013
- Abstract Reviewer, AAPG ACE Meeting, Pittsburgh, PA., 2013
- Session Chair, AAPG ACE Meeting, Long Beach, CA., 2012
- Abstract Reviewer, AAPG ACE Meeting, Long Beach, CA., 2012
- Fieldtrip Leader, GSA Cordilleran/PSAAPG Annual Meeting, Anaheim, CA., 2010
- Grad Student Rep, Geology Department, University of Southern California, Los Angeles, CA., 2008-2009
- Student Body President, Whittier College, Whittier, CA., 2005
- Student Body Treasurer, Whittier College, Whittier, CA., 2004



## Vice president

### Mike Clark, PhD



#### EDUCATION

- Colorado School of Mines, Ph.D, Geology, 1991
- University of Calif at Davis, M.S., Geology, 1979
- University of Calif at Santa Cruz, B.S., Earth Science, 1975

#### EMPLOYMENT

- 2015 – present, Geologist, Aera Energy
- 2005- 2015, Consulting Petroleum Geologist, with DeGolyer & MacNaughton and Oxy, USA
- 1998-2005 Staff geologist, CHEVRON North America, Bakersfield, CA
- 1991-1998 Senior geologist, ARCO Western Energy, Bakersfield, CA
- 1990-1991 Research geologist, EXXON, Houston, TX and ELF AQUITAINE, Pau, France
- 1987-1990 Teaching assistant and Consultant, Colorado School of Mines, Golden, CO
- 1980-1986 Senior geologist, AMOCO Production Co., Denver, CO

#### PRIOR SERVICE

- 1992-Present, Board of Governors, California Well Sample Repository
- 1993-2000, Several offices of San Joaquin Geological Society, including President
- 1996-2004, Oil Museum Advisory Committee of Kern County Museum Foundation
- 1997-2003, House of Delegates, American Association of Petroleum Geologists (AAPG)
- 2000 & 2004, Vic Church Best Poster & Levorsen Best Paper Awards, Pacific Section-AAPG.
- 2005-2006, Vice-President of Pacific Section-AAPG.
- 2006, Distinguished Service Award, Pacific Section-AAPG.

### Afton Van Zant



#### EDUCATION

- San Diego State University, M.S., Geology, 2009
- San Diego State University, B.S., Geology, 2006

#### EMPLOYMENT

- 2015 - 2016 Gente Oil USA Inc., Senior Geologist
- 2012 - 2015 Chevron, Development Geologist
- 2011 – 2012 MicroSeismic Inc., Geophysical Analyst
- 2009 – 2012 Dynamic Graphics Inc., Geologist/Technical Support Specialist
- 2006 – 2009 San Diego State University, Research Assistant

#### PRIOR SERVICE

- 2014 - Current Company Liaison Chair
- 2015 - Current Education Committee
- 2010 - 2014 Student Support Chair
- 2008 - 2011 AAPG IBA Gulf Coast Student Support Advisor
- 2009 - 2012 Short Course and Field Trip Coordinator
- 2007 - 2008 AAPG Student Chapter Secretary
- May 2008 AAPG Imperial Barrel Award: 1st place, Pacific Section
- November 2016 Petrel Short course at San Diego State University
- June 2016 Panelist for PSAAPG YP Q&A
- 2012 - 2016 Field Trip co-host for geology of the San Joaquin Valley for San Diego State University and Guest Schools occurring each April

## Secretary

### Aaron Hebel



#### EDUCATION

- California State University Northridge, MS Geology
- San Diego State University, BS Geology

#### EMPLOYMENT

- 2015 – present, California Resources Cooperation, Exploration Geologist
- 2010-2014, Occidental Petroleum Vintage, Development Geologist

#### PRIOR SERVICE

- 2008, AAPG Imperial Barrel Award Participant; SDSU

### Timothy Gross



#### EDUCATION

- M.S. Geology, Colorado School of Mines, Golden, 2013
- B.S. Geology, University of California, Santa Barbara, 2010

#### EMPLOYMENT

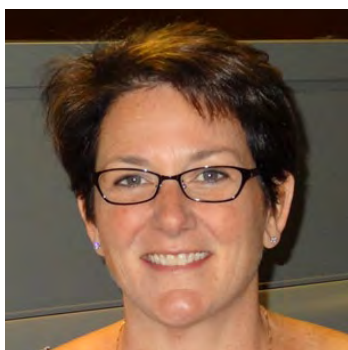
- California Resources Corporation, Geologist, 2015-Present
- Occidental Petroleum Corporation, Geologist, 2013-2014
- Kiska Metals Corporation, Geologist, 2011-2013

#### PRIOR SERVICE

- House Delegate, LABGS Pacific Section AAPG, 2016-Present
- President, CSM Society of Economic Geologists (SEG), 2011-2012

## Treasurer-elect

### Lisa A. Alpert



#### EDUCATION

- University of Southern California, Ph. D. Geophysics, 2012
- CA State University, Los Angeles, M. S. Geology, 2006
- CA State University, Los Angeles, B. S. Geology, 2003

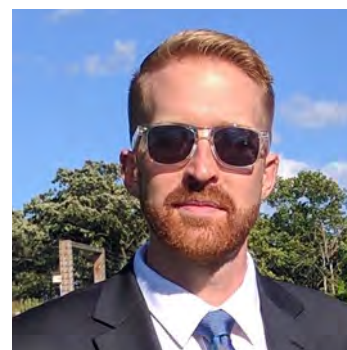
#### EMPLOYMENT

- 2014 – present, Aera Energy LLC, Bakersfield, Exploration Geophysicist,
- 2012-2014, Aera Energy LLC, Bakersfield, Geologist
- 1995-2007, Bookkeeper, Quickbooks expert, various employers, Los Angeles area

#### PRIOR SERVICE

- Member of AAPG, SEG, AGU, GSA, SJGS
- 2016 PSAAPG Convention Registration Chair

### Chris Lalonde



#### EDUCATION

- BS Biology, Baylor, 2008

#### EMPLOYMENT

- Core Laboratories, Bakersfield - Project Leader 2012-present
- Core Laboratories, Houston - Core Analyst 2009-2012

#### PRIOR SERVICE

- Treasurer, SPWLA Bakersfield Chapter, 2016-2017

## Alaska Geological Society - Hard at work on the Convention!!!!!!

### Coast Geological Society

March 21st, 2017.

Speaker: Dr. Scott Hauswirth, CSUN. "Physiochemical Approaches for the Remediation of Manufactured Gas Plant Tar in Porous Media"

April 18th, 2017.

Speaker: Dr. Tanya Atwater UCSB, Emeritus. "Living in the plate boundary: How the San Andreas plate boundary has rearranged southern California"

**Woolley Golf Tournament** – The 18th annual Woolley Golf Tournament & BBQ will be held on May 5th, 2017 at Elkins Ranch Golf Course, Fillmore, CA. Please see the Coast Geological Society web-site for sponsorship and entry forms!

### L.A. Basin Geological Society

March 23rd, 2017.

Speaker: Dan Francis, CSULB. "The history of California Petroleum Exploration and Development"

April 27th, 2017.

Speaker: Joann Stock, CALTECH. "Early results of the IODP Expedition 367: South China Sea Rifted Margin"

Scholarships are now open to California college students in the LABGS sphere.

Applications are due March 27th. See the LABGS website for an application and further details.

### Northern California Geological Society

March 29th, 2017.

Speaker: Dr. Kim Blisniuk, San Jose State University. "Tectonic Geomorphology of San Andreas Fault in Southern CA"

April 26th, 2017.

Speaker: Dr. Mark Richards, UC Berkeley. Topic: TBD.

May 31st, 2017.

Speaker: Dr. Greg Stock, National Park Service.

"The Rise and Fall of Sierra Nevada Glaciers"

### Northwest Energy Association

Announcements coming soon

### Sacramento Petroleum Association

March 15th, 2017.

Speaker: Tom Howard, Pay Zone Inc.

"The Best Way to Picking the Base of Fresh Water"

April 19th, 2017.

Speaker: Bill Ehni, Ehni Enterprises. "The Elko Basin in

North Eastern Nevada in Retrospect of the Results of Noble Energy's Recent Drilling Campaign"

May 17th, 2017.

Speaker: Dr. Dawn Sumner, UC Davis. "Mars Rover Program"

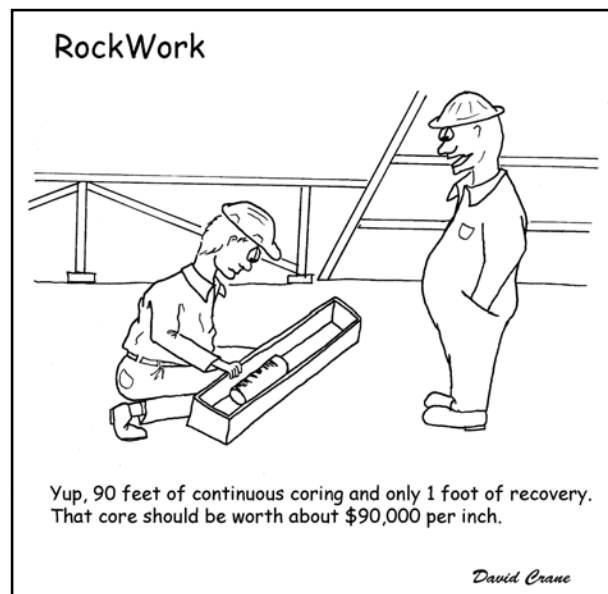
### San Joaquin Geological Society - Announcements coming soon

Speaker Announcements Coming Soon

New SJGS social media: Follow us on Facebook (@SanJoaquinGeologicalSociety)

and Instagram (@sanjoaquingeosociety)!

Stay tuned for upcoming SJGS field trips this year! We'll be exploring California's fascinating geology in 2017.



**Alaska Geological Society**  
[www.alaskageology.org](http://www.alaskageology.org)

P. O. Box 101288  
Anchorage, AK 99510

Contact: Eric Cannon  
[eccannon@gmail.com](mailto:eccannon@gmail.com)


Luncheon meetings are held monthly September through May, usually on the third Thursday of the month, at the BP Energy Center (1014 Energy Court) from 11:30 a.m. to 1:00 p.m. The hot lunch cost is \$20 for members with reservations; \$22 for non-members with reservations; and \$25 without reservations. The box lunch cost is \$13 for members with reservations, \$15 for non-members with reservations, and \$18 without reservations. For reservations, call the AGS reservation voice mail at 907-258-9059 or contact David Hite at [hiteconsult@acsalaska.net](mailto:hiteconsult@acsalaska.net) by noon on Monday before the meeting.

President  
President-Elect  
Vice-President  
Secretary  
Treasurer  
Past-President

Monte Mabry  
Chad Hults  
Steve Wright  
Dave Buthman  
Heather Heusser  
Keith Torrance

[monte.mabry@bp.com](mailto:monte.mabry@bp.com)  
[chadcph@gmail.com](mailto:chadcph@gmail.com)  
[vp@alaskageology.org](mailto:vp@alaskageology.org)  
[dbuthman@hilcorp.com](mailto:dbuthman@hilcorp.com)  
[heather.heusser@alaska.gov](mailto:heather.heusser@alaska.gov)  
[keith.torrance@uicumiaq.com](mailto:keith.torrance@uicumiaq.com)
**Coast Geological Society**  
[www.coastgeologicalsociety.org](http://www.coastgeologicalsociety.org)

P. O. Box 3055  
Ventura, CA 93006

Contact: Alastair Hadow  
805-804-7233


Dinner meetings are held monthly September through May, on the third Tuesday of the month, at Poinsettia Pavilion, 3451 Foothill Road in Ventura. Social hour starts at 6:00 p.m., dinner is served at 7:00 p.m., and the talk starts at 8:00 p.m. The cost of dinner with reservations is \$20 (members), \$25 (non-members), or \$10 (students and K-12 teachers). For reservations, please email Eric White ([secretary@coastgeologicalsociety.org](mailto:secretary@coastgeologicalsociety.org)), and should be made by 4:00 p.m. on the Friday before the meeting.

President  
Past President  
Vice President  
Secretary  
Treasurer  
Membership chair  
Webmaster/Tech Support

Alastair Hadow  
Bonnie Walters  
Theresa Heirshberg  
Eric White  
Stacey Zeck-Boles  
Phil Kaminski  
John Rice

[president@coastgeologicalsociety.org](mailto:president@coastgeologicalsociety.org)  
[pastpresident@coastgeologicalsociety.org](mailto:pastpresident@coastgeologicalsociety.org)  
[vicepresident@coastgeologicalsociety.org](mailto:vicepresident@coastgeologicalsociety.org)  
[secretary@coastgeologicalsociety.org](mailto:secretary@coastgeologicalsociety.org)  
[treasurer@coastgeologicalsociety.org](mailto:treasurer@coastgeologicalsociety.org)  
[membership@coastgeologicalsociety.org](mailto:membership@coastgeologicalsociety.org)  
[webmaster@coastgeologicalsociety.org](mailto:webmaster@coastgeologicalsociety.org)
**Los Angeles Basin Geological Society**  
[www.labgs.org](http://www.labgs.org)

Contact: Jean Kulla  
949-500-3095


Luncheon meetings are held monthly September and October; and January through June, usually on the fourth Thursday of the month, at The Grand at Willow Street Conference Centre (4101 E. Willow Street) in Long Beach. Lunch is served at 11:30 a.m., and the talk starts at 12:15 p.m. The cost is \$25 (with reservations), \$30 (without reservations), \$20 for retired members, and \$5 for students. Reservations can be made online at [www.labgs.org](http://www.labgs.org) or by contacting Graham Wilson at 562-326-5278 or [GWilson@SHPI.net](mailto:GWilson@SHPI.net). Reservations must be made prior to Tuesday before the meeting.

President  
Vice President  
Treasurer  
Secretary  
Scholarships  
Webmaster

Bert Vogler  
Jacqueline Chavez  
Nicky White  
Ryan Weller  
Karla Tucker  
Ivan Aburto

[hvogler@kleinfelder.com](mailto:hvogler@kleinfelder.com)  
[geojacqueline@gmail.com](mailto:geojacqueline@gmail.com)  
[nwhite@geomechanicstech.com](mailto:nwhite@geomechanicstech.com)  
[ryweller@gmail.com](mailto:ryweller@gmail.com)  
[ktrk2@aol.com](mailto:ktrk2@aol.com)  
[Ivan.Aburto@crc.com](mailto:Ivan.Aburto@crc.com)
**Northern California Geological Society**  
[www.ncgeolsoc.org](http://www.ncgeolsoc.org)

9 Bramblewood Court  
Danville, CA 94506-1130

Contact: Mark Sorensen  
[msorensen64@earthlink.net](mailto:msorensen64@earthlink.net)


Evening meetings are held monthly September through May, usually on the last Wednesday of the month, at the Masonic Center (9 Altarinda Road) in Orinda. Social hour starts at 6:30 p.m., and the talk starts at 7:00 p.m. (no dinner). For reservations, contact Dan Day at [danday94@pacbell.net](mailto:danday94@pacbell.net) before the meeting. Cost is \$5 per regular member; \$1 per student member; and \$1 per K-12 teachers.

(Continued on next page)



## NCGS Officers:

President	Will Schweller	willschweller@yahoo.com
President-elect	Greg Bartow	Gregbartow@yahoo.com
Past President	Phil Reed	philecreed@yahoo.com
Treasurer	Barbara Matz	barbara.matz@cbifederaleservices.com
Secretary	Crystal Replogle	ctreplogle@gmail.com
Membership Chair	Tom Barry	tomasbarry@aol.com
Outreach Chair	John Christian	jmc62@sbcglobal.net
Newsletter Editor	Mark Sorensen	msorensen64@earthlink.net
Field Trip Coordinator	Stefano Mazzoni	mazzonigeoscience@gmail.com
Scholarships	Phil Garbutt	plgarbutt@comcast.net
Program Director	John Karachewski	cageo@sbcglobal.net
Website Editor	Mark Detterman	mdetter1@gmail.com

## Northwest Energy Association

www.nwenergy.us

P. O. Box 6679

Portland, OR 97228-6679

Contact:

Jim Jackson or John Armentrout



Luncheon meetings are held monthly September through May, on the third Thursday of the month, at the Multnomah Athletic Club (1849 SW. Salmon Street) in Portland, Oregon. Meeting time is at 11:45 AM to 1:00 PM (speaker about 12:15 PM). The cost is \$25 for members and \$30 for non-members. For information or reservations email NWEnergyAssociation@gmail.com, or our Postal Box: Northwest Energy Association, P.O. Box 6679, Portland, Oregon 97228-6679.

President	Laird Thompson	lbtfacs@gmail.com
Vice-President	Steven Pappajohn	pappajohn@narpllc.com
Past President	Bill Rodgers	bill.rodgers@stoel.com
Treasurer	Barb Portwood	bbportwood@gmail.com
Co-Treasurer	Jim Jackson	jackson.js@comcast.net
Secretary	Clark Niewendorp	clark.niewendorp@state.or.us

## Sacramento Petroleum Association

P. O. Box 1844

Folsom, CA 95630

Contact: Jerry Reedy or Pam Ceccarelli

916-486-2643

916-439-0400



Luncheon meetings held monthly January through November, on the third Wednesday of the month. Location: Club Pheasant Restaurant in West Sacramento. The meetings starts at noon. The cost is \$16 - \$20. For information or reservations, contact Pam Ceccarelli.

President	Jerry Reedy	JWR5532@aol.com
Vice-President	Scott Hector	Scott.Hector@gmail.com
Secretary	Derek Jones	djones@gasbiz.com
Editor/Treasurer	Pam Ceccarelli	pc626@comcast.net

## San Joaquin Geological Society

www.sanjoaquingeologicalsociety.org

P. O. Box 1056

Bakersfield, CA 93302

Contact: Beckie Burston

BeckieBurston@chevron.com



We have dinner meetings on the second Tuesday of the month at the Eagle's Lodge at 1718 17th Street, Bakersfield, CA 93302. There is an icebreaker at 6:00 p.m., dinner at 7:00 p.m., and a talk at 8:00 p.m. Dinner is \$25 for members with reservations and \$30.00 for nonmembers and members without reservations. Students may attend for free.

President	Greg Gordon	gsgordon@aeraenergy.com
Past President	Ariel Auffant	aauffant@chevron.com
President-Elect	Cameron Campbell	cameron.campbell@conservation.ca.gov
Vice-President	Mark Maroun	mgmaroun@aeraenergy.com
Secretary	Beckie Burston	BeckieBurston@chevron.com
Treasurer	Kathy Smith	kathysmith@pacseis.com
Webmaster	Ivan Aburto	Ivan.Aburto@crc.com



WHERE BETTER BECAME BEST

BRYAN BELL HAS OPENED  
A NEW FULL SERVICE  
CORE ANALYSIS FACILITY IN  
BAKERSFIELD

VISIT US ON THE WEB  
[www.bestcoreservices.com](http://www.bestcoreservices.com)

Or Stop by at

4031 Alken Street Suite A1  
Bakersfield CA 93308  
Phone: (661) 835-6001

Contact Bryan Directly

Cell: (661) 496-2654  
[bryan@bestcoreservices.com](mailto:bryan@bestcoreservices.com)

COMING SOON

# Anomalies

✚ Pioneering Women in Petroleum Geology: 1917-2017

To be released April 1, 2017, *Anomalies* represents a deep foraging into the unrealized and near lost history of women that began in 1917 their 100 year journey as petroleum geologists.

“Robbie Gries and her contributors have created a remarkable account of early women in petroleum geology. The book represents a “deep dive” into the lives, accomplishments, triumphs, and, even, terrors, of early women professionals. It displays impressive scholarship, and reflects four years’ efforts to source histories of these largely forgotten women professionals.

An astounding network of women professionals, formed by need, strengthened by time, constituting an amazing support system. Robbie has done an amazing, multi-year research effort in uncovering hundreds of early petroleum geologists, active in many countries, whose early efforts are now recorded for our belated appreciation.

A delightful, hopeful, sense of progress is conveyed by the book, as the intense survival stories of early women geologists, give way to a prideful modern acknowledgement of the importance of women petroleum geoscientists in our modern petroleum industry.

The book should be read by every petroleum geologist, geophysicist, and petroleum engineer; partly for the pleasure of the sprightly told adventures, partly for a sense of history, and, significantly, because it engenders a proper respect towards all women professionals, forging their unique way in a “man’s world”.

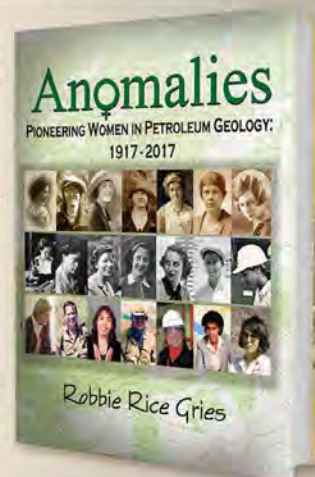
Buy this book! It will renew your pride in being a petroleum geologist, and it will enlighten you on the struggles of our wonderful women associates as they followed their professional dreams.”

– Marlan Downey, Past President of AAPG, CEO Roxanna Petroleum

“*Anomalies* celebrates the inspiring achievements of an intrepid group of pioneering women that have laid the groundwork for female geoscientists today. Robbie Gries provides an entertaining and informative narrative of 100 years of trailblazers that is enriched by excerpts from diaries, letters and interviews. The women in these pages were true scientific contributors and innovators at a time when women were just emerging into the growing field of petroleum geology. This is a must read for any historian of the oil patch, as it provides the only comprehensive record of the hidden history of these ground-breaking women.”

– Allyson Anderson Book,  
Executive Director - American Geosciences  
Institute

Once released, the book can be ordered from the AAPG Store for \$50 plus shipping and handling. Please e-mail [publications@AAPG.org](mailto:publications@AAPG.org) expressing your interest and we will contact you as soon as the book is available. Don't want to wait? Visit the AAPG Center at the 2017 ACE meeting to purchase your copy.

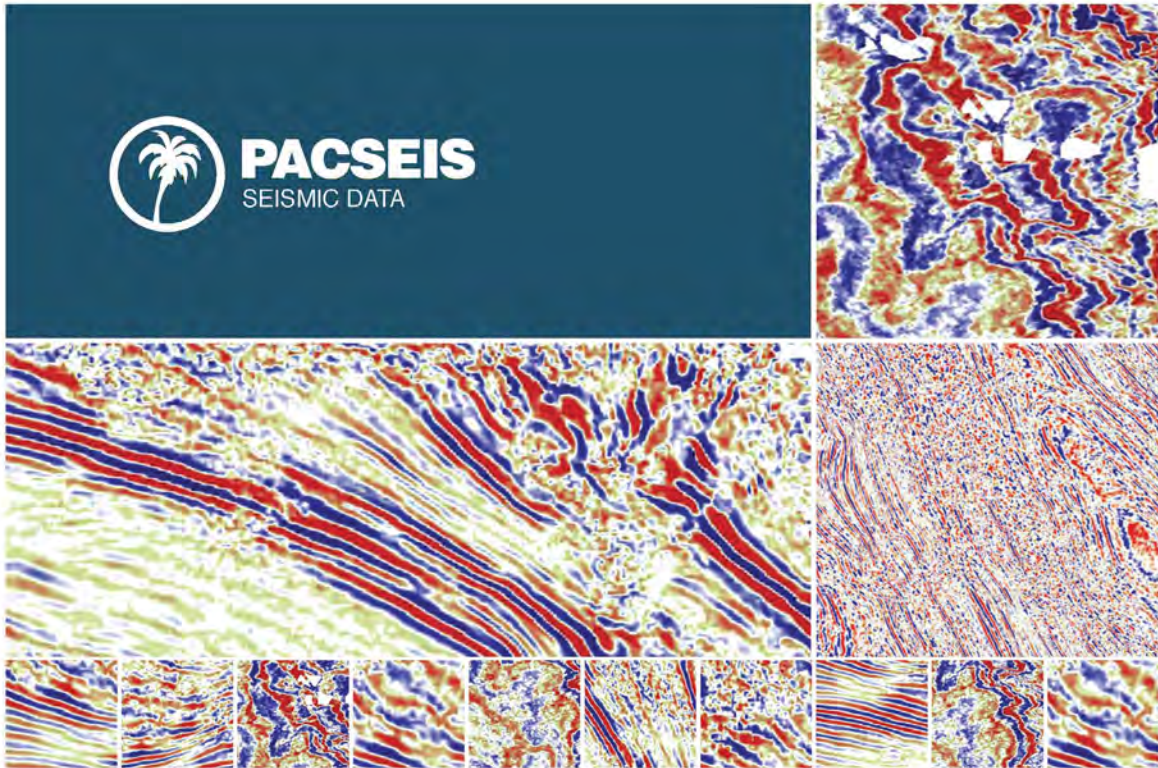






PACIFIC SECTION AAPG  
P. O. Box 1072  
BAKERSFIELD, CA 93302

PRESORTED  
STANDARD  
U.S. POSTAGE PAID  
BAKERSFIELD, CA  
PERMIT NO. 1163



PACIFIC SEISMIC COMPANY

## The leader in subsurface information

### RESOURCES THAT DELIVER THE DIFFERENCE

- One of the largest seismic databases available for license
- Seismic available for immediate license  
Over 500,000 line miles of 2D data located in domestic United States (onshore & offshore)
- 2,500 square miles of 3D surveys

### RECENTLY ACQUIRED SEISMIC DATABASES BY PACIFIC SEISMIC CO.

- Chevron USA California, OXY USA Nationwide (including Arco & Enron)
- Santa Fe energy, TXO, Cities Service Oil & Gas Nationwide
- Southern Pacific, PG&E/ NGC, SOHIO

**PACIFIC SEISMIC COMPANY** | Your Full-Service Seismic Brokerage & Acquisition Company

EXPLORATION CONSULTING

PROJECT DEVELOPMENT

Tel (661) 322-1171 | Fax (661) 322-1181 • [www.pacseis.com](http://www.pacseis.com) | Bakersfield | Houston