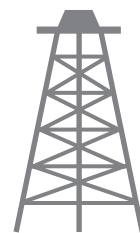




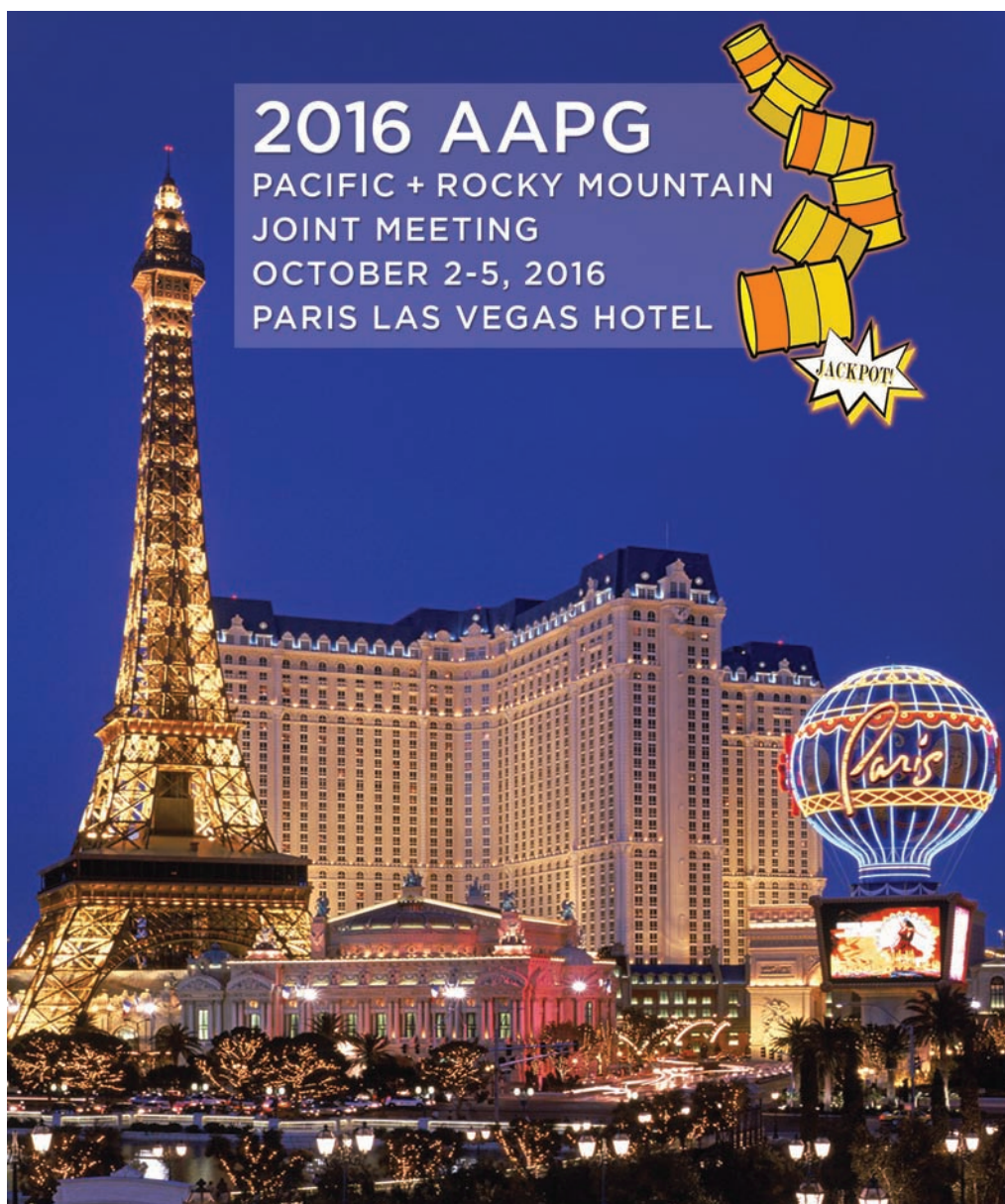
# Pacific Petroleum Geology



NEWSLETTER

Pacific Section • American Association of Petroleum Geologists

September & October 2016



**New Plays. New Ways. New Days.  
Pacific + RMS AAPG Joint Meeting**

[www.psaapg.org](http://www.psaapg.org)



## THANK-YOU

**Chevron and California Resources Corporation.**



For your continued support of local students.  
Your sponsorship funded 317 student dinners  
at SJGS scientific talks in 2015-2016.



### **PAYZONE INC.**

**Geological, Geophysical, and Petrophysical Consulting Services for the Petroleum Industry** 661-387-1715

- Accurate, consistent fieldwide reservoir properties for modeling, OIP, and improved heat management in thermal projects
- Old E-Log interpretation

- Image log interpretation and integration with petrophysical analysis
- 2D/3D seismic interpretation, expertise in old 2D data
- "Mystery logs" and other difficult log problems

Our petrophysical models for siliceous shales and California sands are based on over 30 years of experience with these rocks, including core, log, and lithology data from every basin in the state

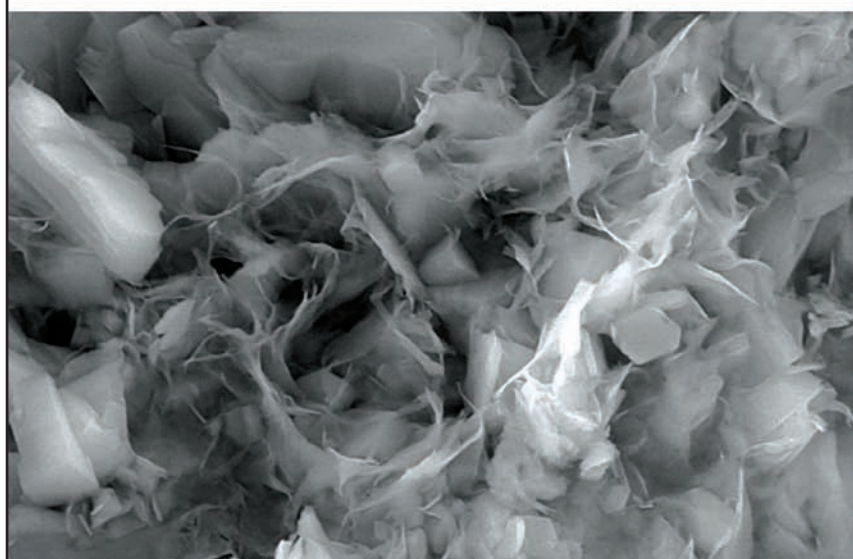
Deborah Olson, President  
dmolson@payzoneinc.com  
661-747-0375

**Have a log question? Give us a call!**

[www.payzoneinc.com](http://www.payzoneinc.com)

Tom Howard, Image Analyst  
tomh@payzoneinc.com  
832-407-2862

## ROCK SOLID EXPERIENCE



**Core Lab**  
RESERVOIR OPTIMIZATION

**[www.corelab.com](http://www.corelab.com)**  
**661-325-5657**

© 2013 Core Laboratories.  
All rights reserved.



## 2016-2017 Officers

President	Robert Horton 661-654-3059 rhorton@csub.edu president@psaapg.org
President-Elect	Mike Nelson 805-535-2058 mnelson@dcorllc.com president-elect@psaapg.org
Vice President	Emily Fisher 661-665-5571 EAFisher@aeraenergy.com vicepresident@psaapg.org
Secretary	Becca Schempp 661.381.0478 Becca.Schempp@crc.com secretary@psaapg.org
Treasurer 2015-2016	Lisa A. Alpert 661- 665-5557 laalpert@aeraenergy.com treasurer@psaapg.org
Treasurer Elect 2015-2016	Simmie Chehal 661- 665-5738 SKChehal@aeraenergy.com treasurer@psaapg.org
Past President	Kurt Neher 661-412-5203 kurt.neher@crc.com president@psaapg.org
Editor-in-Chief 2014-2016	Vaughn G. Thompson 661-412-5452 vaughn.thompson@crc.com editor@psaapg.org

## Staff

Web Master	Jason Minch 661-412-5206 Jason.Minch@crc.com webmaster@psaapg.org
Membership Chair	Randall Stephenson 661-665-5599 RKStephenson@aeraenergy.com
Publications Chair	Larry Knauer 661-205-4463 laknauer@aol.com
Advisory Council Representative 2015-2018	Tony Reid 661-412-5467 Tony.Reid@crc.com

<b>4-5</b>	<b>2016 AAPG PS + RMS Convention •</b>	<i>Sponsors</i>
<b>6-7</b>	<b>President's Message •</b>	<i>Robert Horton</i>
<b>8</b>	<b>In Memoriam •</b>	<i>Augusto Becerra</i>
<b>9</b>	<b>In Memoriam •</b>	<i>Arthur Richard Brown</i>
<b>10</b>	<b>In Memoriam •</b>	<i>James L. O'Neill</i>
<b>11</b>	<b>In Memoriam •</b>	<i>Tom Redin</i>
<b>12</b>	<b>2016 AAPG PS + RMS Convention •</b>	<i>Chairs note</i>
<b>13-14</b>	<b>2016 AAPG PS + RMS Convention •</b>	<i>Schedule of events</i>
<b>15-18</b>	<b>2016 AAPG PS + RMS Convention •</b>	<i>Special events</i>
<b>19</b>	<b>Member Story •</b>	<i>Johnson/Schempp</i>
<b>20-22</b>	<b>Member Society News •</b>	

- CONTACT THE EDITOR at editor@PSAAPG.org
- Images (graphics, photos, and scans) must be at least 300 dpi resolution. Text should be at least 600 dpi.
- Scanned photos, illustrations (line art) or logos should preferably be submitted as a .tif, .gif, or .bmp; .jpeg is OK.

## Advertising Rates

Members	Single Issue	Year (6 issues)
Full Page	\$200.00	\$800.00
Half Page	\$125.00	\$525.00
Quarter Page	\$75.00	\$325.00
Business Card		\$125.00

2016 Advertisements reduced price by 50%  
due to drastic drop in oil prices

## Societies Free Advertising:

Convention: Unlimited Space in PSAAPG Newsletter  
Societies: 1/4 Page in AAPG Explorer

We thank the following generous sponsors:

GOLD



SILVER



BRONZE

North Ranch Resources LLC

PETROLOG  
GEOLOGICAL WELL LOGGING



## PATRON



AAPG Division of Environmental Geology | Black Coral LLC  
 The Discovery Group | Don Clarke | Rose Exploration  
 Robert L. Bayless, Producer | Steven's Production | Tamarak  
 Vaughn Thompson | White Eagle Exploration, Inc.

#### HEIGHTEN YOUR COMPANY PROFILE AND SUPPORT THIS GREAT MEETING – BECOME A SPONSOR!

We are grateful to the many industry and personal sponsors of the 2016 Pacific + Rocky Mountain Joint Meeting, and we recognize that this is a particularly difficult time for fundraising. However, as it is vital to keep our regional technical meetings viable, please consider contributing -- even at a lower level than you might have done otherwise in better economic times. As the geologists who are volunteering our time, effort and funds to make this event a success for everyone, we will be enormously appreciative of every sponsorship dollar received, regardless of the amount. So feel free to email one of us directly and tell us how you can help. And we thank you for your continued support of interesting and timely technical programs like this one.

Larry Knauer, [laknauer@aol.com](mailto:laknauer@aol.com) R. Randy Ray, [rrandyray@aol.com](mailto:rrandyray@aol.com)



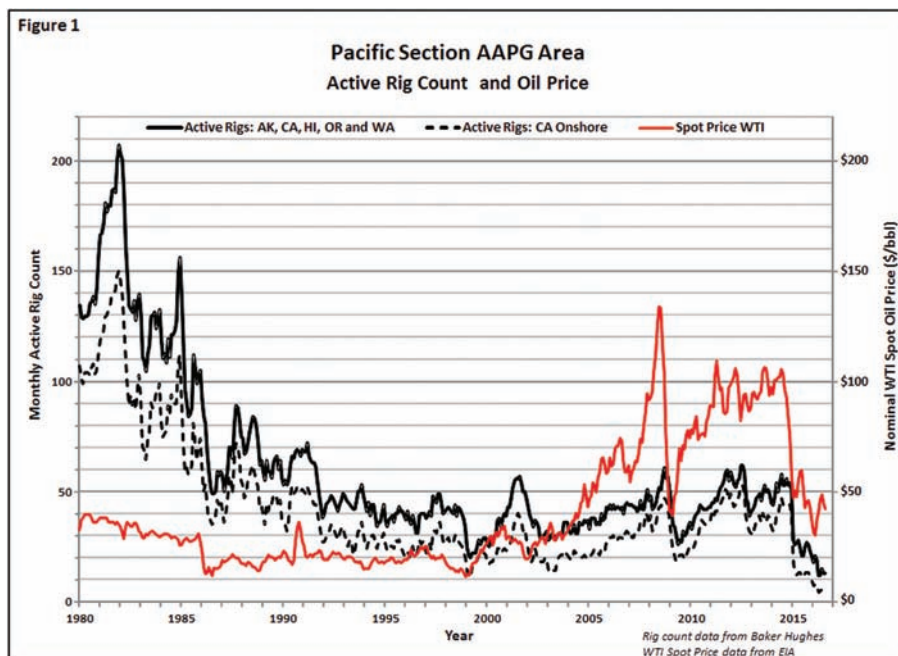
## Dear Pacific Section AAPG Members,

I want to start by thanking the outgoing Executive Committee and congratulate them on a very successful year: Kurt Neher (President), John Williams (Past President) Laura Bazely (Vice President), Shane Petersen (Secretary), Rebeca DeMarais (Treasurer), Lisa Alpert (Treasurer Elect), Vaughn Thompson (Editor in Chief), Jean Kulla (President – LABGS), Ariel Auffant (President – SJGS), Bonnie Walters (President – CGS), Jerry Reedy (President – SPA), Will Scheweller (President – NCGS), Monte Mabry (President – AGS), and John Armentrout (President – NWEA). I also want to acknowledge the many on-going contributions of our standing-committee chairs: Cynthia Huggins (Scholarship; IBA; and Student Expo), Tony Reid (AC representative; Constitution & Bylaws), Jean Kulla (Legislation and Public Affairs), Larry Knauer (Conventions; Publications), Joan Barminski (2015 Convention), Plamen Gamev (2016 Convention), Mark Wilson (Foundation), Becca Shemp (Student Activities), Jason Minch (Webmaster), Randy Stephenson (Membership), and Bob Lindblom (Honors & Awards). Through their commitment and hard work we have continued to maintain the high standard of service to our members for which Pacific Section is well known.



And of course I am delighted to welcome our incoming EC members: Mike Nelson (President Elect), Kurt Neher (Past President), Emily Fisher (Vice President), Becca Shemp (Secretary), Lisa Alpert (Treasurer), Simmie Chechal (Treasurer Elect), Vaughn Thompson (Editor in Chief), Herbert Vogler (President – LABGS), Greg Gordon ((President – SJGS), Alaster Haddow ((President – CGS), Jerry Reedy (President – SPA), Will Schweller (President – NCGS), Chad Hults (President – AGS), and Bill Rogers (President – NWEA). Finally, I'd like to congratulate Dan Schwartz on his election as AAPG Vice President - Sections, Anne Drauker to AAPG Energy Minerals Division President, Jon Allen to AAPG Young Professionals Committee Chair, and Tony Reid on his continuing appointment to the AAPG Advisory Council. It is especially important that we have such excellent representation at the national level. I look forward to working with such a talented and committed group of people as we move forward into what should be an exciting year.

In 2014, when I was approached about standing for election to the EC, the price of crude oil was above \$100. We all know what happened later that year, the effects of which continue to ripple through our community. Still, AAPG's Annual Convention and Exposition in Calgary this past June was quite a success. The number of exhibitors was much smaller than normal, but the roughly 4500 geoscientists in attendance were treated to a very high quality technical program, with standing room only in many of the oral sessions. Notably, attendees seemed to be very upbeat in spite of the hard times that our profession has been experiencing. It was very encouraging to see the level of optimism being exhibited, and everyone I ran into seemed very satisfied with the meeting.



(Continued on next page)

Speaking of which, you probably noticed that we did not have our normal PS-AAPG convention this past spring. Instead we are holding a joint meeting with AAPG Rocky Mountain Section in Las Vegas in early October. The response to the call for abstracts was excellent and the technical program is shaping up to be a don't-miss event. The eight pre- and post-convention field trips look to be extremely worthwhile and offer something for everyone. This is an exciting opportunity for us to meet and mingle with old friends who we don't get to see very often as well as to establish new networking contacts and make new friends. Registration is now open and I want to encourage everyone to plan on attending.

And, if circumstances prevent your participation in the Las Vegas Joint Meeting, don't despair; we will have our normal PS-AAPG spring convention in Anchorage in May. So mark your calendars! And finally, if you didn't see it, don't miss Anne Drauker's excellent article in the August 2016 AAPG Explorer.

See you in Las Vegas!

**Robert Horton**

PSAAPG President, 2016-2017

---

### Did you know...

Did you know that California is the third largest liquid fuels market in the world, behind only China and the entire the United States. According to the the Western States Petroleum Association (<http://cafuefacts.com/category/get-the-facts>), California consumes about 41 million gallons of gasoline, and 11 million gallons of diesel fuel per day. To supply the state's demand for fuel, California's 14 refineries produce, on average, two million gallons of gasoline and diesel fuel per hour, every day, 365 days a year! Crude oil to feed this appetite comes from California (38%), Alaska (12%) and foreign sources (50%). Significantly, for those of us that work in the upstream oil and gas business, all of the crude oil produced in California is used in California refineries, and the bulk of it is refined into fuel. Given these large numbers, it should come as no surprise that we, in California, have a great market for our product. Even if California's petroleum industry doubled its production, our refineries would still need to import additional crude to meet our local demand. The low price of crude may have slowed down our activity, but it has done nothing to reduce the California appetite for more crude oil, more crude than California can currently produce. This, to us, is a sign that Californian Oil Finders have their work cut out for a long, long time to come.

*Editor's Note. "Did you know", is kindly brought you by Kurt Neher and Tom Hopps.*

*The idea behind these thought provoking pieces is to create conversations about important issues in an informal tone. The topics presented often don't make it into integrated articles or stories, and so, are always open to discussion. They are often talking points, ideas, or observations of trends that are applicable to our science, that we think our readers would enjoy contemplating, and then taking to their communities.*

*We hope you enjoy these little packs of dynamite reading.*

## Augusto Becerra

Augusto Becerra, 60, died July 28, 2016, with his family by his side in Bakersfield, California.

He was born September 28, 1955, in Lima, Peru. His father, Dr. Armando Becerra, and his mother, Lucrecia, raised him along with 3 sisters and 2 brothers. They lived in various regions of Peru. Augusto graduated from Universidad Nacional Mayor de San Marcos, Lima, Peru, with an Engineering degree in Geology. After graduating, he started work at Occidental Petroleum in Peru. He worked for OXY for 35 years.

He met his wife of 38 years, Angela, at their local church in Los Laureles, Lima. Together, they raised four children and moved to Bakersfield, California, in 2000. Augusto Becerra is survived by his wife, Angela; son and spouse, Jorge and Katya, sons, Roberto, Miguel Angel; daughter and spouse, Paola and Jason; parents, Armando and Lucrecia; siblings, Armando, Lucrecia, Sonia, Ursula, and Fernan.

He was a dedicated and generous son, brother, husband, father, and friend. He will be missed and remembered by everyone who had the privilege of knowing him.

A memorial service was held at Greenlawn Southwest Cemetery in Bakersfield, California, on August 6th.





## Arthur Richard “Dick” Brown

Arthur Richard “Dick” Brown, 79, of Seal Beach, California, passed away peacefully at the Long Beach Veterans Medical Center, accompanied by the love and prayers of many on Monday, July 25, 2016.

Dick was born September 18, 1936 in Springfield, Missouri, to Harry Silsby Brown and Mary Margaret Holbrook Brown. He was a graduate of Springfield Senior High School, attended Drury College, and transferred to The University of Oklahoma where he received his Bachelor’s degree in Geology. He proudly and honorably served as an officer in the United States Navy aboard the USS Rochester. After his Pacific tour, he earned his Master’s degree in Geology at The University of California Riverside. Dick worked in the Sierra Nevada Mountains with renowned geologist and lifelong friend, Thomas W. Dibblee.



He was a Registered Geologist with the State of California for almost half a century. He worked with United States Geological Survey (USGS) for many years and was a longtime member of the South Coast Geologic Society (SCGS), serving as its past President. He edited and published numerous field guides, papers and books on the geology of Southern California and especially on The Palos Verdes Peninsula. He was also a member of the Los Angeles Basin Geological Society (LABGS) and The Association of Engineering Geologists (AEG) and Association of Prematurely Retired Geologists – Pacific Desert Rats (APRG).

Dick is survived by his wife Margaret “Genny” Brown of Seal Beach, CA, and by his children: Andrea Monet and her daughter Alexandra of Seal Beach, CA; Susie (Joseph) Pearce and her children Leo and Evangeline of Simpsonville, SC; and Charlie (Jaime) Brown of Singapore. He is predeceased by his sister Anna Brown Freeman formerly of Springfield, MO, and is survived by brothers, Harry S. Brown, M.D. of Santa Barbara, CA, and Tom B. Brown of Cape Coral, FL.

Dick is remembered as a kind, gentle, good man, who brought humor and love to his family, social and professional environments. He will be greatly missed by all who knew him.

Funeral Mass was held on Tuesday, August 23, 2016 at 10:30 am at St. Anne’s Catholic Church, Seal Beach, CA.

Interment will be at Riverside National Cemetery in a private ceremony at a later date.

## Deep-Water Depositional Systems of Northern California: *Oil and Gas Reservoir Analogues from Canyon to Basin Floor*

October 17–21, 2016 • Palo Alto/ Davis/ Monterey



Come explore the deep-water deposits spectacularly exposed west of Silicon Valley, to the north of Davis, and to coastal Monterey. This is an opportunity to learn about the stratigraphic evolution of canyon, channel-fill, levee, splay, and overbank clastic assemblages. Some key highlights:

- Collaborative reservoir characterization using industry data
- Characterization of coarse- to fine-grained strata deposited via high- and low-density turbidity currents, debris flows, and transitional to hybrid flows
- Integration of outcrop data to understand the risks and associated uncertainty pertaining to reservoir presence, reservoir quality, and seal presence in reservoir modeling to flow simulation

Please contact [Courses@BasinDynamics.com](mailto:Courses@BasinDynamics.com) or call (650) 862-0574 to learn more!

## James L. O'Neill (Jim)

It is with great sorrow that we have to say goodbye to a kind, kind soul and a gentle man who lived his life for his family. James L. O'Neill (Jim) died Monday, July 18, 2016 at the wonderful age of 91.

Jim was born in Bakersfield on January 31, 1925 to Larkin and Irene O'Neill. He grew up throughout the Central Valley, living in Lindsey, Porterville, Terra Bella and Delano. He was an outstanding athlete in his school days (chosen as athlete of the year in 1941), playing all four major sports throughout high school. He continued playing football and baseball well into his college career at the University of Nevada and finally at Stanford University, where he graduated in 1948 with a degree in Petroleum Geology.



Jim interrupted his college studies when he enlisted in the Marines after his first semester of college in 1942; some of his service time was spent learning Japanese at the Naval Language School. It was after his duty as a Marine that he met and married the love of his life, Beverley Buckingham, on July 27, 1946. They would have been married 70 years this week.

Jim had a long and successful career as a Petroleum Geologist, although it was interrupted once more by the Marines as he was recalled for the Korean War. He worked for a number of the larger Petroleum companies in Bakersfield before starting Argonaut Oil and Gas Consultants with his long time friend and business partner, Jack Clare. Their partnership lasted over 30 years. Jim's work took him throughout California and the Central Valley, to many of the Midwest and Southern oil states, along with a stint in Libya. In 1962 he was one of two men being considered for the job of Head Geologist for the Navaho Nation's. Jim was a lifelong member of the AAPG, past president and lifelong member of the local Pacific section of the Geological Society and a Rotary Paul Harris Fellow.

Jim and his wife, Beverley, traveled extensively on the East Coast, England and Europe. They divided their "home time" between Bakersfield and Carmel. Jim, always an avid gardener, spent his free time tending to his gardens, actively working in his yard until just a few months ago.

He was a kind, caring and extremely honorable man that will be deeply missed by his family and friends. As one son-in-law frequently said "your dad is my hero", he was a hero to us all.

Jim was preceded in death by his father and mother and his sister Patricia. He is survived by his wife Beverley, 2 daughters and their spouses, Patricia Giordano (Daniel) and Nancy Hodder (John), three granddaughters, Megan Raymond (Randy), Jennifer Giordano-Davis and Kaitlin Matthys (Paul), 4 great grand children and his brother Gerald Lee O'Neill.

Jim went by many names in his lifetime: Son, Jimmy, James, Jim, Brother, Partner, Husband, Spouse, Father, Dad, Grandpa, Great Grandpa, FIL (that one confused a lot of people, it stands for Father-In-Law and) and most recently as Pops. We love you Pops. At Jim's request there will be no services. In lieu of flowers donations may be made to the Hoffmann Hospice Home where Jim was so lovingly cared for in his final days. We want to thank Mercy South West emergency and ICU for all of their help. A very special thank you goes to all the staff and Miss Maggie at the Hoffmann Hospice Home, you made Jim's last few days so much easier for everyone.



**EarthQuest Technical Services, LLC**

*David R. Walter*

drwalter@eqtservices.com  
www.eqtservices.com

RESERVOIR CHARACTERIZATION  
GEOLOGY  
PETROPHYSICS  
DATABASE MANAGEMENT  
DIGITIZING & SCANNING

P.O. Box 1697  
Bakersfield, CA 93302  
661-321-3136

## GREGORY GEOLOGICAL SERVICES

**Glenn J. Gregory**

**California Professional Geologist #3676**

**4800 Easton Drive, Suite 101  
Bakersfield, CA 93309**

**(661) 633-5555  
glenn@bak.rr.com**

## Tom Redin

Tom W. Redin, 91, passed away on Friday, May 6th in Ventura, California. He was born on March 26, 1925 in Chicago, Illinois to Roy W. and Gertrude Redin. A long-time Ventura resident, Tom spent most of his youth in the Chicago suburb Park Ridge, Illinois. After graduating from Maine Township High School, he enlisted in the army in 1945 and served in the European Theatre for two years.

After returning from overseas, Tom spent one year at the University of Illinois before deciding to make the trek out to California via Route 66 in his father's old Plymouth with two of his high school buddies. Soon after arriving in Los Angeles, Tom enrolled at UCLA. He became a member of the UCLA gymnastics team and in 1952, he earned his Bachelor's Degree in Geology. In 1954 Tom met Jean Christensen at the Hollywood Palladium and they were married 6 months later. Tom and Jean had three children: Chuck, Nanci and Karen.



Tom began his geology career in the California offshore. From 1955 to 1959, he worked for the offshore exploration consortium, Continental, Union, Superior and Shell (the CUSS group). In 1960, he joined Union Oil Company and began a regional evaluation of Pakistan's Indus River Basin. In 1961 he was transferred to Santa Paula, California where he conducted field-mapping studies in Ventura Basin. He was transferred to Santa Fe Springs in 1963 to work with Union's offshore exploration group. Tom became District Exploration Geologist in 1969 and added the Los Angeles Basin to his responsibilities. He retired from the company he loved in 1986, but orange (big Unocal ball) remained his favorite color.

Tom was a contributor to AAPG Memoir 52 on active margin basins and gave talks on oil and gas production from submarine fan deposits. With Jack West, he co-authored a series of five regional cross sections of LA Basin for Pacific Section AAPG. Since 1996, Tom was the key geologist developing a series of regional cross sections and maps in the Santa Barbara Channel. After 20 years and numerous revisions, this project will be finalized and available from the Pacific Section by early fall of this year. Tom received Pacific Section's Distinguished Service Award in 2003 and was awarded Honorary Life Membership in the Pacific Section in 2009.

Tom was an avid sports fan. He played volleyball throughout much of his life, even competing in the Senior Olympics in the 1970s. He was a diehard UCLA Bruin fan and also enjoyed watching the Los Angeles Lakers and LA Dodgers. Tom loved the outdoors and nature, often initiating road trips with his family across the western U.S. and Canada. Tom was a firm believer in staying fit and for the past 40 years, Tom and Jean walked the hillsides of Ventura on a daily basis.

Tom is survived by his wife, Jean; his son, Chuck Redin, of Fullerton; daughter and son-in-law, Nanci and Casey Powers, of Agoura Hills; daughter, Karen Redin, of Ventura; grandchildren, Quinn and Zoe Powers and Madeline Anguiano.

Tom was a kind, generous and dependable man with a quick wit and engaging sense of humor. He loved to share geologic information and concepts with his colleagues, especially younger geologists. He will be missed and remembered by those who knew him and by those who use his work.

HOME MOVIES TO DVD,  
PHOTO GIFTS, RESTORATIONS  
& MORE

**digital creations**

1705 20th St.  
(661) 322-5552  
digitalcr1@gmail.com



like us on facebook  
digitalcreations.bakersfield



Retirement Planning  
College Savings Plans  
Financial Planning

**Morgan Stanley**

**The Hopps Group** Lydia Hopps & Benjamin Hopps CFP®

Investment Management Consultant  
Senior Vice President  
Financial Advisor  
300 Esplanade Dr., 10th Floor  
Oxnard, CA 93036  
1 805 278-3609

[www.morganstanleyfa.com/thehoppsgroup/](http://www.morganstanleyfa.com/thehoppsgroup/)

© 2014 Morgan Stanley Smith Barney LLC. Member SIPC.  
CRC897562 03/14



**Dear PS and RMS AAPG member,**

We invite you to attend the 2016 Joint PS+RMS AAPG convention in Las Vegas. As the first ever joint convention between the Pacific and Rocky Mountain Sections, we are honored to serve as the general chairs and hope that you will find this event professionally and personally satisfying. With active members from all states in the Western US, we are looking forward to a strong technical program, rewarding short courses and fieldtrips, stimulating guest events, and numerous opportunities for social interaction and networking.

Conveniently located, Las Vegas is the mecca for any convention in the Western US, and we will take advantage of all this unique city has to offer. The convention headquarters is the beautiful Paris Las Vegas hotel-resort-casino, centrally located on the Strip. Its location allows attendees to fully immerse themselves in convention events, while easily stepping out into the “entertainment capital of the world.”

Expanding our strong technical lineup are our Jackpot Sessions covering RMAG’s Hot Plays of the Rockies, Mountains to Abyss: California Borderland as Archive of Geologic Evolution, Basin-and-Range Province: Strategies for Challenging Conditions, Alaska: Developments in Exploration and Production, and Source Rock Investigations.

We have planned exceptional fieldtrips that any geologist would appreciate, including single or multi-day visits to world-class sites in Nevada, California, and Utah. Our short courses offer you the opportunity to learn more about unconventional plays, ArcGIS in oil and gas, petrophysics and core data integration, sequence stratigraphy, and deep-water reservoirs. Be sure to explore the Map Gallery, which will introduce you to the power of GIS. Guest events include visits to the natural wonders of Red Rock Canyon National Conservation Area and the sinister intrigue of the internationally acclaimed Mob Museum. And much more – special sessions on energy and government regulations and new career opportunities, All-Convention Luncheon speaker Mark Zoback on managing the risk of induced seismicity, and discounted tickets to a dozen Las Vegas shows.

We recognize the hard times our friends and colleagues in the oil-and-gas industry are experiencing these days. We know many of our members have been directly affected by the challenging business environment and we are doing everything we can to create a convention with our members’ needs and concerns in mind. We have established tiered registration pricing to alleviate some of the cost burden and we have secured discounted hotel rates for our members. Please consider registering and booking your room early, as those preferential rates will increase as it gets closer to the convention.

We are very excited to be part of this unique event, and we look forward to seeing you at the 2016 Joint PS+RMS AAPG convention in Las Vegas from October 2nd to October 5th.

Sincerely,

Plamen Ganey ..... PSAAPG Co-chair  
David Hawk ..... RMS AAPG Co-chair  
Jon Schwalbach ..... PSAAPG Co-chair  
Jerry Walker ..... RMS AAPG Co-Chair

All activities to be held at the Paris Las Vegas Hotel-Casino-Resort unless otherwise noted. Schedule and locations subject to change; please consult the website ([www.psaapg.org/2016convention/](http://www.psaapg.org/2016convention/)) or your onsite program booklet for updates.

#### **THURSDAY 29 SEPTEMBER**

11:00 am Field Trip #8 Departure (West Desert, UT)

#### **FRIDAY 30 SEPTEMBER**

7:30 am Field Trip #1 Departure (from Bakersfield–San Joaquin Basin oil fields)

#### **SATURDAY 1 OCTOBER**

7:30 am Field Trip #2 Departure (Megabreccias)  
Field Trip #3 Departure (Valley of Fire)  
8:00 am-5:00 pm Short Course #1 (Unconventionals)  
Short Course #2 (GIS)  
Short Course #3 (Petrophysics)  
Short Course #5 (Sequence Stratigraphy for Students)  
Short Course #6 (Naturally Fractured Reservoirs)  
3:00 pm-6:00 pm Registration Open

#### **SUNDAY 2 OCTOBER**

7:00 am-8:00 pm Registration Open  
7:30 am Field Trip #4 Departure (Exploration Concepts)  
8:00 am-5:00 pm Short Course #1 (Unconventionals)  
Short Course #2 (GIS)  
Short Course #4 (Siliclastic Reservoirs)  
Short Course #5 (Sequence Stratigraphy for Students)  
Short Course #6 (Naturally Fractured Reservoirs)  
10:00 am-5:00 pm Speaker/Judges Ready Room open  
1:00 pm-4:00 pm SPECIAL SESSION: Oil and Gas Regulations Forum  
2:00 pm-4:00 pm Guest Hospitality (guests are encouraged to attend)  
4:30 pm-5:30 pm Opening Session  
5:30 pm-7:30 pm Map Gallery Open  
5:30 pm-7:30 pm Icebreaker in Exhibit Hall

#### **MONDAY 3 OCTOBER**

7:00 am-5:00 pm Registration Open  
7:00 am-7:45 am Speakers/Poster Presenters Breakfast  
7:00 am-7:45 am Judges Breakfast  
7:00 am-5:00 pm Speaker/Judges Ready Room open  
7:00 am-9:00 am AAPG House of Delegates Breakfast  
7:30 am-10:00 am Guest Hospitality  
8:00 am-5:00 pm Technical Sessions  
8:30 am-6:00 pm Exhibitors/Posters Open  
8:30 am-6:00 pm Map Gallery Open  
8:30 am-1:00 pm Guest Tour – Mob Museum  
11:30 am-1:30 pm All-Convention Luncheon

*(Continued on next page)*

4:00 pm-5:00 pm	RMS-AAPG Foundation Meeting (by invitation only)
4:30 pm-6:00 pm	Mini-breaker with Exhibitors and Poster Presenters
5:00 pm-6:00 pm	PS-SEPM Awards Reception
5:30 pm-7:00 pm	PS-AAPG Executive Committee Meeting (by invitation only)

## TUESDAY 4 OCTOBER

6:30 am-8:00 am	RMS-AAPG Executive Committee Breakfast/Meeting (by invitation only)
7:00 am-5:00 pm	Registration Open
7:00 am-7:45 am	Speakers/Poster Presenters Breakfast
7:00 am-5:00 pm	Speaker/Judges Ready Room open
7:30 am-10:00 am	Guest Hospitality
8:00 am-5:00 pm	Technical Sessions
8:00 am-9:20 am	SPECIAL SESSION: Surviving the Downturn
8:30 am-5:30 pm	Exhibitors/Posters Open
8:30 am-12:30 pm	Guest Tour – Red Rock Canyon
8:30 am-5:30 pm	Map Gallery Open
9:50 am-11:30 am	SPECIAL SESSION: Energy Policy Forum
11:30 am-1:30 pm	AAPG Divisions Luncheon
5:30 pm-7:00 pm	PS-RMS Combined President Reception (by invitation only)

## WEDNESDAY 5 OCTOBER

7:00 am-11:00 am	Registration Open
7:00 am-7:45 am	Speakers/Poster Presenters Breakfast
7:00 am-11:00 am	Speaker/Judges Ready Room open
7:30 am-10:00 am	Guest Hospitality
8:00 am-12:00 noon	Technical Sessions
8:30 am-12:30 pm	Map Gallery Open
8:30 am-12:30 pm	Exhibitors/Posters Open
11:00 am-12:00 noon	PS-SEPM Awards Reception
1:00 pm	Field Trip #5 Departure (from the intersection of I-15 and Nipton Rd., CA exit 286–Mojave Desert)
2:00 pm	Field Trip #6 Departure (SW Utah/Paria Wilderness) Field Trip #7 Departure (Death Valley Geo-Tourism)

**Marty Hall**  
Program Development Manager  
Multi-Client Services

7765 Windwood Way  
P.O. Box 549  
Parker, CO 80134  
USA

P: 720 851.6152  
C: 303 885.8860

[geokinetics.com](http://geokinetics.com)

[marty.hall@geokinetics.com](mailto:marty.hall@geokinetics.com)





**DAVID BURROUGHS**  
President

**GEOLOGICAL LOGGING INC.**  
9229 Beatty Drive, Suite B  
Sacramento, CA 95826  
(916) 452-9570 Tel  
(408) 307-4653 Cell  
(916) 452-9573 Fax  
[david@geologinc.net](mailto:david@geologinc.net)

[www.geologinc.net](http://www.geologinc.net)



## MAP GALLERY

The objective of the Map Gallery is to present a poster session like venue for contributors to display their geographic information systems (GIS) map products as standalone results, which otherwise may not warrant a full poster or oral presentation. With the increasing importance of geospatial technology, GIS, and remote sensing technology to petroleum E&P, the Map Gallery can showcase more of the AAPG membership's work while lowering the threshold of preparation required for a full-blown poster or oral presentation.

The Map Gallery is a free event. Registration for the Meeting is not a prerequisite for involvement in the Map Gallery.



**Eligibility:** Map Gallery entries must be created using GIS software.

**Topical coverage:** Entries will focus on the science, exploration and development of petroleum and energy-related resources, such as geothermal, uranium and coal, and related environmental issues within or including the greater western United States, Alaska and Hawaii.

**Commercial content:** No restrictions are placed on commercial content.

**Map size:** Maximum map size is 3 feet x 5 feet.

**Display period:** Map Gallery contributors will be provided passes to the Exhibit Hall for entry between 4:30 and 5:30 p.m., Sunday, October 2nd to display their maps in time for the Icebreaker. Contributors are encouraged to remain at their maps to engage with viewers from 5:30 to 6:15 p.m. Maps may be displayed until 11:00 a.m. Wednesday, October 5th. Contributors who have not registered for the Meeting may remove their maps before the end of the Icebreaker or between 11:00 a.m. and noon, Wednesday, October 5th. Maps not removed by noon will be disposed of at the discretion of the organizing committee.

**Map submission:** Contributors are asked to submit an application to Sam Limerick at [samlimerick@gmail.com](mailto:samlimerick@gmail.com) by Thursday, September 17th, with the following information:

- Title of map
- Author(s)
- Primary contact person
- Email address
- Phone number
- Organization
- Brief description of map (20 words maximum)

**Late submittals and walk-in entries:** Subject to sufficient space, late submittals and walk-in entries on October 2, 2016 will be accepted.

**Sign-in procedure for Map Gallery contributors:** All Map Gallery contributors must sign in at the Registration Desk Sunday, October 2nd, after 4:00 p.m., to receive a Map Gallery badge (if not registered for the Meeting) and pass to the Exhibit Hall before displaying their maps. The Icebreaker, from 5:30 to 7:30 p.m., will be open to all Map Gallery contributors.

*(Continued on next page)*

## **SURVIVING THE DOWNTURN**

---

**(Monday, 3 October, 8:00-9:45 am)**

If you work in the oil patch long enough, you will undoubtedly experience a downturn in our industry. The key to a long career as an energy professional is learning how to survive the slumps. David Hawk, who has enjoyed a 46-year career in the oil, gas, and energy industry, and Susan Nash, Ph.D., AAPG's Director of Innovation and Emerging Science/Technology, will share valuable advice how to weather the bad times. This session is particularly relevant to younger professionals experiencing their initial industry setback.

## **ENERGY POLICY FORUM**

---

**(Monday, October 3, 2016, 9:50-11:30 am)**

The forum will review issues related to environmental protection and their consequences on access and use of public lands for exploration and development of petroleum and energy-related resources, including geothermal, coal, oil shale, and uranium. It will focus on how the federal land-use planning process works. In the western U.S., government regulations have significant impact on production of energy resources that are important components of the nation's free-market system and, as such, America's energy security. Speakers from an industry-support group, BLM, AAPG's Geoscience and Energy Policy Office, and Vets4Energy have been invited to present their viewpoints on these critical issues. Admission by badge only.

## **EXHIBITS**

---

These dynamic times in our industry mean that the service sector must make hard decisions over every marketing dollar. Vendors present in Las Vegas will definitely be in it for the long haul and should be recognized not only for their support of our efforts to maintain a base of current technology and science, but also because they understand and appreciate the value of face-to-face interaction with present and future clients.

The two Sections are coming together to share science and relationships and will therefore offer an opportunity for exhibitors to touch more geoscientists in one venue than in previous years, and likewise for participants to broaden their knowledge of available products and services.

### **The growing list of exhibitors includes:**

AAPG, Core Lab, Field Geo Services, GeoCare Benefits Insurance, GeoEdges, Horizon Well Logging, IHS, Nair Innovations, Neuralog, Pacific Section AAPG Publications, Pacific Section SEPM Publications, Selman & Associates.

### **INTERESTED IN EXHIBITING?**

Space is still available but it's beginning to fill up! For a downloadable sales flier, floor plan, exhibitor list and space application form, go to <https://www.psaapg.org/2016-conference-exhibitors-map/>. You can find out what space is still open by contacting exhibits coordinator Bruce Lemmon, [bruce@gemworldevents.net](mailto:bruce@gemworldevents.net).

*(Continued on next page)*

## **SPECIAL ACTIVITIES & EVENTS**

---

### **OPENING/AWARDS SESSION**

(Sunday, 2 October, 4:30-5:30 pm)

The session will include opening remarks from AAPG President Paul Britt and leaders of the Pacific and Rocky Mountain sections involved in organizing this first-ever joint meeting of the two sections. An award ceremony will follow the introductory remarks.

Pacific Section AAPG will present its annual awards at this event. The Distinguished Educator Award will go to a university professor in recognition of distinguished and outstanding contributions to geological education. The A.I. Levorsen and Church Awards will recognize outstanding oral and poster presentations, respectively, from the 2015 PSAAPG meeting in Oxnard. The Teacher of the Year award recognizes excellence in teaching of natural resources and earth sciences at the K-12 level. Additionally, the Pacific Section recognizes service to the society with the Young Professionals Distinguished Service and Distinguished Service Awards. Honorary Life Membership, the society's highest honor, is awarded to those who have distinguished themselves in their contributions to science, the Pacific Section, and the profession of geology.

The Rocky Mountain Section will present five awards: the Robert J. Weimer Lifetime Contributions Award, the Distinguished Service Award, the John D. Haun Landmark Publication Award, the Outstanding Young Professional Award, and the 2016 Teacher of the Year Award.

Also honored are presenters from the 2014 Rocky Mountain Section Denver meeting. AAPG will present the A.I. Leverson Award for the best oral paper. The Wyoming Geological Association will present the Steve Champlain Memorial Award for best poster presentation and the Runge Award for best student paper. Admission by badge only.

### **ICEBREAKER**

(Sunday, 2 October, 5:30-7:30 pm)

Plan to proceed from the Opening/Awards Session into our celebratory kick-off, as we "cut the ribbon" on the exhibits, posters and Map Gallery and enjoy the kind of hospitality the way only Vegas can deliver!

Admission is by badge only.

### **AAPG HOUSE OF DELEGATES BREAKFAST**

(Monday, 7:00 – 8:30 am; BY INVITATION ONLY)

If you are an AAPG delegate, plan to attend a special breakfast on Monday morning. An invitation and RSVP will come directly from AAPG prior to Meeting.

### **SPEAKER/POSTER PRESENTERS BREAKFAST**

(Monday-Wednesday, 3-5 October, 7:00-7:45 am)

All session chairs, speakers, and poster presenters should plan to attend a complimentary breakfast on the morning of their scheduled sessions. Reminders will be given regarding session timing, audiovisual equipment, how speakers will be introduced, and when poster presenters should be present at their booths.

*(Continued on next page)*



**JUDGES BREAKFAST**

(Monday, 3 October ONLY, 7:00-7:45 am)

Volunteer to be a judge! We need your help in determining the best paper and poster awards, so please sign up to judge a session when you register to attend the Las Vegas meeting. All those who do will be invited to a breakfast Monday to receive packets containing your instructions and ballots, including where and by when ballots need to be turned in.

**MONDAY EXHIBIT-POSTER MINI-BREAKER**

(Monday 3 October, 4:30-6:30 pm)

Enjoy a casual brew with colleagues while spending quality face time with poster presenters, Map Gallery participants, and exhibitors. Since this will be a scheduled time for judges to make their rounds, poster presenters will be at their stations for one-on-one, in-depth conversation. Admission by badge only.

**PACIFIC SECTION-SEPM AWARDS RECEPTION**

(Monday, 3 October, 5:00-6:00 pm)

The Pacific Section SEPM will hold their annual meeting and present awards at the conclusion of their special session honoring Donn Gorsline, *Mountains to the Abyss: The California Borderland as an Archive of Geologic Evolution*. The session will be held Monday afternoon, please consult the final technical program (on the meeting website and in the onsite program booklet) for the event's location.

**ALL-CONVENTION LUNCHEON**

(Monday, 3 October, 11:30 am-1:30 pm)

The All-Convention Luncheon will feature Mark D. Zoback, PhD, the Benjamin M. Page Professor of Geophysics at Stanford University and Director of the Stanford Natural Gas Initiative. Mark conducts research on in situ stress, fault mechanics, and reservoir geomechanics. He is the author of a textbook entitled *Reservoir Geomechanics*, the author/co-author of 300 technical papers, holder of five patents, and Senior Executive Adviser to Baker Hughes. He has received numerous awards and honors, including Honorary Membership to the Society of Exploration Geophysicists in 2012 and AAPG's Robert R. Berg Outstanding Research Award in 2015. He served on the Secretary of Energy's committee on shale gas development and environmental protection. Mark will speak on Stanford's new Natural Gas Initiative and injection-related seismicity.

**AAPG DIVISIONS LUNCHEON**

(Tuesday, 4 October, 11:30 am-1:30 pm)

The AAPG Divisions Luncheon will showcase division activities and initiatives, with emphasis on developments in the Pacific and Rocky Mountains regions. Presidents Tim Murin will represent the Division of Environmental Geosciences, Chandler Wilhelm the Division of Professional Affairs, and Anne Draucker the Energy Minerals Division.

*IMPORTANT! Volunteer to be a Judge! Help in this important aspect of the meeting. All presentations, poster and oral, will be judged, and nearly 50 volunteers are needed to fill all the slots. Just indicate your willingness to serve by checking the appropriate box during the registration process.*

*For more information, contact Tofer Lewis, Judging Co-Chair, at [Tofer.Lewis@enerplus.com](mailto:Tofer.Lewis@enerplus.com).*

## Pacific Section YPs shake things up in Bakersfield.



*Brandi Johnson,  
Pacific Section YP Lead  
and Geologist at Chevron*



*Becca Schempp,  
Pacific Section Student Chapter  
Liaison/Pacific Section  
Secretary and Geologist  
at California Resources Corporation*

The Pacific Section's Young Professionals Special Interest Group isn't letting the industry decline get us down; it only means we're ramping up! As a group, we realized that this is the time to get even more involved and stay as active as possible. We are getting all of our PS AAPG YP social media connected and becoming more reachable than ever. Our Pacific Section YP group can now be found on LinkedIn and Facebook, with Twitter and Instagram still to come! And, of course, there are in-person events if you want the biggest bang-for-your-buck!

We recently held a great networking event in June at the Temblor Brewing Company in Bakersfield, CA. There were nearly 35 people in attendance from all over California, and even a couple of Rocky Mountain Section folks who happened to be in town! The attendees had a wide range of experience, from those with just a few years in industry, to those newly in transition, to current interns and even proactive students in their last year of graduate classes. They all had an opportunity to engage in discussions with a Q&A panel of experienced industry geologists, including a licensed Professional Geologist. The participants and panelists brought questions and perspectives from several companies and schools, including California Resources Corporation, Gente Oil, Chevron, and several AAPG student chapters.

The topics discussed focused largely on the current downturn and economic climate of the industry. Having the opportunity to hear the panelists' past experiences with industry slumps helped ease some of the worry in the room and provided a glimmer of hope that we'll persevere. Locally, Bakersfield has been noticeably impacted by lower commodity prices, with many of the resident companies reducing staff over the last year. As a result, all of us have had to better prepare and adapt to a varying future. The greatest over-arching message conveyed by the panel was to stay connected and involved with local societies, even when the industry is at a high point, because your friends and colleagues are those connections that could one day be your link to a successful career. You can find all of the detailed questions and responses from that event at [Facebook.com/groups/PSAAPGYPS](https://www.facebook.com/groups/PSAAPGYPS).

Coming up quickly on our calendar is the Pacific + Rocky Mountain: Joint Section Meeting in Las Vegas, NV, October 2-5, 2016. The Pacific Section YP group is proud to be a sponsor for the meeting this year. We will be hosting a Happy Hour Mixer, as well as offering registration fee assistance to Pacific Section YPs. For more information on the Joint Meeting, visit [PSAAPG.org/2016convention](http://PSAAPG.org/2016convention), or email the PS AAPG YP group at: [psaapgyps@gmail.com](mailto:psaapgyps@gmail.com).



### PETROLOG

PETROLOG, INC.

JOHN T. WILLIAMS

Geologist, P.G. #5899, President

**Geological Well Logging**

P.O. BOX 7028  
VENTURA, CA 93006  
[jtw@petrolog-geological.com](mailto:jtw@petrolog-geological.com)

(805) 642-2847 • Fax(805) 980-5569 • Cell(805) 231-3793

**Jeramy Brown**  
**Jennifer Sanderson**  
Co-Owners

3310 Truxtun Ave. Suite 160  
Bakersfield, CA 93301

661-864-0397  
[info@valentienrestaurant.com](mailto:info@valentienrestaurant.com)  
[www.ValentienRestaurant.com](http://www.ValentienRestaurant.com)



## Alaska Geological Society

Alaska Geological Society luncheon meetings are held at the BP Energy Center in Anchorage, Alaska. The meetings are typically scheduled on the 3rd Thursday of each month 11:30 AM – 1:00 PM.

September 20th, 2016. 11:30 am

Speaker: Aaron Wech, USGS, Alaska Volcano Observatory, Anchorage, AK

"They're hard to identify and nonthreatening, so what makes slow earthquakes so significant"

## Coast Geological Society

September 20th, 2016

Speaker: Dr. Mark Simons, Caltech

"Imaging geodesy: fault slip, aquifers and volcanoes"

October 18th, 2016

Speaker: Jerome (Jerry) De Graff, California State University, Fresno

"Environmental/ engineering geology themed talk.

Title to be announced on the CGS web-site".

## L.A. Basin Geological Society

September 22nd, 2016

Speaker: Katherine Kovac.

"The Jonah Gas Field, Sublette County, Wyoming – Recent Developments"

## Northern California Geological Society

September 28th, 2016

Speaker: Rick Wilson, California Geological Survey

"Addressing California's Tsunami Hazard"

October 26th, 2016

Speaker: Dr. Brian Collins, US Geological Survey

"Processes of exfoliation-induced rock falls: recent studies from California's Sierra Nevada"

## Northwest Energy Association

Announcements coming soon

## Sacramento Petroleum Association

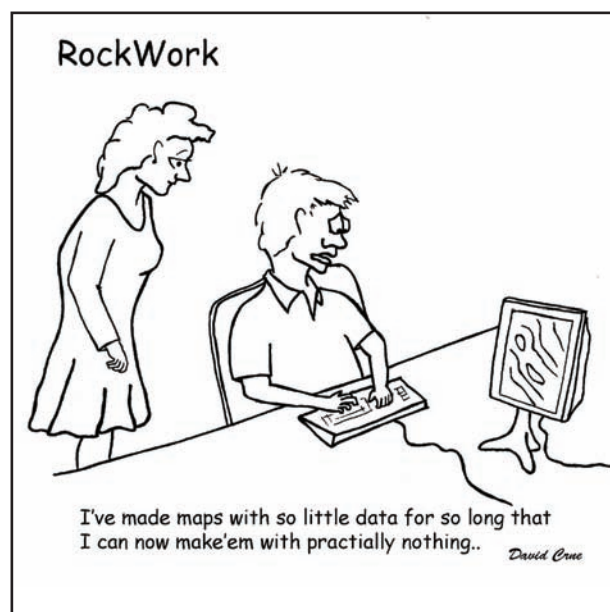
Announcements coming soon

## San Joaquin Geological Society

October 11th, 2016

Speaker: Yannick Wirtz

"Apparent and Actual Strain Variation in the Monterey and Sisquoc Formations, Southern Santa Maria Basin, California: Implication for Cross-Section Construction and Reservoir Characterization"





**Alaska Geological Society**  
www.alaskageology.org

P. O. Box 101288  
Anchorage, AK 99510

Contact: Eric Cannon  
eccannon@gmail.com



Luncheon meetings are held monthly September through May, usually on the third Thursday of the month, at the BP Energy Center (1014 Energy Court) from 11:30 a.m. to 1:00 p.m. The hot lunch cost is \$20 for members with reservations; \$22 for non-members with reservations; and \$25 without reservations. The box lunch cost is \$13 for members with reservations, \$15 for non-members with reservations, and \$18 without reservations. For reservations, call the AGS reservation voice mail at 907-258-9059 or contact David Hite at hiteconsult@acsalaska.net by noon on Monday before the meeting.

President:	Monte Mabry	monte.mabry@bp.com
President-Elect:	Chad Hults	chadcph@gmail.com
Vice-President:	Steve Wright	vp@alaskageology.org
Secretary:	Dave Buthman	dbuthman@hilcorp.com
Treasurer:	Heather Heusser	heather.heusser@alaska.gov
Past-President:	Keith Torrance	keith.torrance@uicumiaq.com

**Coast Geological Society**  
www.coastgeologicalsociety.org

P. O. Box 3055  
Ventura, CA 93006

Contact: Alastair Hadow  
805-804-7233



Dinner meetings are held monthly September through May, on the third Tuesday of the month, at Poinsettia Pavilion, 3451 Foothill Road in Ventura. Social hour starts at 6:00 p.m., dinner is served at 7:00 p.m., and the talk starts at 8:00 p.m. The cost of dinner with reservations is \$20 (members), \$25 (non-members), or \$10 (students and K-12 teachers). For reservations, please email Eric White (secretary@coastgeologicalsociety.org), and should be made by 4:00 p.m. on the Friday before the meeting.

President:	Alastair Hadow	president@coastgeologicalsociety.org
Past President:	Bonnie Walters	pastpresident@coastgeologicalsociety.org
Vice President:	Theresa Heirshberg	vicepresident@coastgeologicalsociety.org
Secretary:	Eric White	secretary@coastgeologicalsociety.org
Treasurer:	Stacey Zeck-Boles	treasurer@coastgeologicalsociety.org
Membership chair:	Phil Kaminski	membership@coastgeologicalsociety.org
Webmaster/Tech Support:	John Rice	webmaster@coastgeologicalsociety.org

**Los Angeles Basin Geological Society**  
www.labgs.org

Contact: Jean Kulla  
949-500-3095



Luncheon meetings are held monthly September and October; and January through June, usually on the fourth Thursday of the month, at The Grand at Willow Street Conference Centre (4101 E. Willow Street) in Long Beach. Lunch is served at 11:30 a.m., and the talk starts at 12:15 p.m. The cost is \$25 (with reservations), \$30 (without reservations), \$20 for retired members, and \$5 for students. Reservations can be made online at www.labgs.org or by contacting Graham Wilson at 562-326-5278 or GWilson@SHPI.net. Reservations must be made prior to Tuesday before the meeting.

President:	Bert Vogler	hvogler@kleinfelder.com
Vice President:	Jacqueline Chavez	geojacqueline@gmail.com
Treasurer:	Nicky White	nwhite@geomechanicstech.com
Secretary:	Ryan Weller	ryweller@gmail.com
Scholarships:	Karla Tucker	ktkr2@aol.com
Webmaster:	Ivan Aburto	iaburto@breitburn.com

**Northern California Geological Society**  
www.ncgeolsoc.org

9 Bramblewood Court  
Danville, CA 94506-1130

Contact: Mark Sorensen  
msorensen64@earthlink.net



Evening meetings are held monthly September through May, usually on the last Wednesday of the month, at the Masonic Center (9 Altarinda Road) in Orinda. Social hour starts at 6:30 p.m., and the talk starts at 7:00 p.m. (no dinner). For reservations, contact Dan Day at danday94@pacbell.net before the meeting. Cost is \$5 per regular member; \$1 per student member; and \$1 per K-12 teachers.

(Continued on next page)

## **NCGS Officers:**

President:	Will Schweller	willschweller@yahoo.com
President-elect:	open	open
Past President	Phil Reed	philecreed@yahoo.com
Treasurer	Barbara Matz	barbara.matz@cbifederalservices.com
Secretary	Dan Day	danday94@pacbell.net
Membership Chair	Tom Barry	tomasbarry@aol.com
Outreach Chair	John Christian	jmc62@sbcglobal.net
Newsletter Editor	Mark Sorensen	msorensen64@earthlink.net
Field Trip Coordinator	Stefano Mazzoni	mazzonigeoscience@gmail.com
Scholarships	Phil Garbutt	plgarbutt@comcast.net
Program Director:	John Karachewski	cageo@sbcglobal.net
Website Editor	Mark Detterman	mdetter1@gmail.com

### **Northwest Energy Association**

www.nwenergy.us

P. O. Box 6679

Portland, OR 97228-6679

Contact:

Jim Jackson or John Armentrout



Luncheon meetings are held monthly September through May, on the third Thursday of the month, at the Multnomah Athletic Club (1849 SW. Salmon Street) in Portland, Oregon. Meeting time is at 11:45 AM to 1:00 PM (speaker about 12:15 PM). The cost is \$25 for members and \$30 for non-members. For information or reservations email NWEnergyAssociation@gmail.com, or our Postal Box: Northwest Energy Association, P.O. Box 6679, Portland, Oregon 97228-6679.

President	Laird Thompson	lbtfrcs@gmail.com
Vice-President	Steven Pappajohn	pappajohn@narpllc.com
Past President	Bill Rodgers	bill.rodgers@stoel.com
Treasurer	Barb Portwood	bbportwood@gmail.com
Co-Treasurer	Jim Jackson	jackson.js@comcast.net
Secretary	Clark Niewendorp	clark.niewendorp@state.or.us

### **Sacramento Petroleum Association**

P. O. Box 1844

Folsom, CA 95630

Contact: Jerry Reedy or Pam Ceccarelli

916-486-2643

916-439-0400



Luncheon meetings held monthly January through November, on the third Wednesday of the month. Location: Club Pheasant Restaurant in West Sacramento. The meetings starts at noon. The cost is \$16 - \$20. For information or reservations, contact Pam Ceccarelli.

President:	Jerry Reedy	JWR5532@aol.com
Vice-President:	Scott Hector	Scott.Hector@gmail.com
Secretary	Derek Jones	djones@gasbiz.com
Editor/Treasurer	Pam Ceccarelli	pc626@comcast.net

### **San Joaquin Geological Society**

www.sanjoaquingeologicalsociety.org

P. O. Box 1056

Bakersfield, CA 93302

Contact: Beckie Burston

BeckieBurston@chevron.com



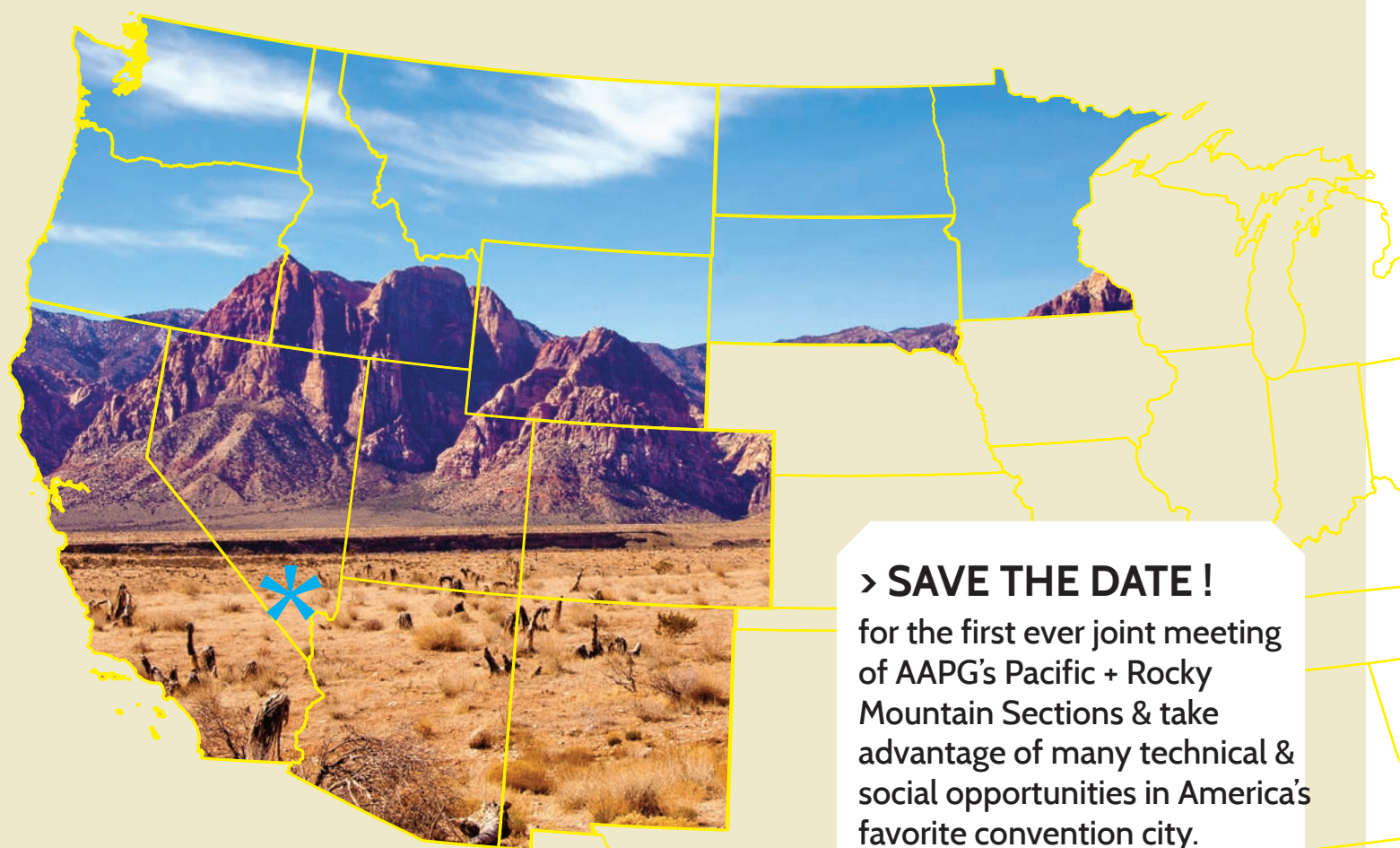
We have dinner meetings on the second Tuesday of the month at the Eagle's Lodge at 1718 17th Street, Bakersfield, CA 93302. There is an icebreaker at 6:00 p.m., dinner at 7:00 p.m., and a talk at 8:00 p.m.

Dinner is \$25 for members with reservations and \$30.00 for nonmembers and members without reservations. Students may attend for free.

President:	Greg Gordon	gsgordon@aeraenergy.com
Past President:	Ariel Auffant	aauffant@chevron.com
President-Elect:	Cameron Campbell	cameron.campbell@chevron.com
Vice-President:	Mark Maroun	mgmaroun@aeraenergy.com
Secretary:	Beckie Burston	BeckieBurston@chevron.com
Treasurer:	Kathy Smith	kathysmith@pacseis.com

# AAPG PACIFIC + ROCKY MOUNTAIN SECTIONS JOINT MEETING

## NEW PLAYS, NEW WAYS, NEW DAYS



### > **SAVE THE DATE !**

for the first ever joint meeting of AAPG's Pacific + Rocky Mountain Sections & take advantage of many technical & social opportunities in America's favorite convention city.

**2-5 OCTOBER 2016**  
**PARIS LAS VEGAS HOTEL**

**For more  
information  
contact:**

**Plamen Ganev**  
PS General Co-Chair  
(661) 665-5459  
PNGanev@aeraenergy.com

**David Hawk**  
RMS General Co-Chair  
(208) 362-9728  
dhawk3@cableone.net

**Jerry Walker**  
RMS General Co-Chair  
(775) 348-0650  
jerry\_reno@charter.net

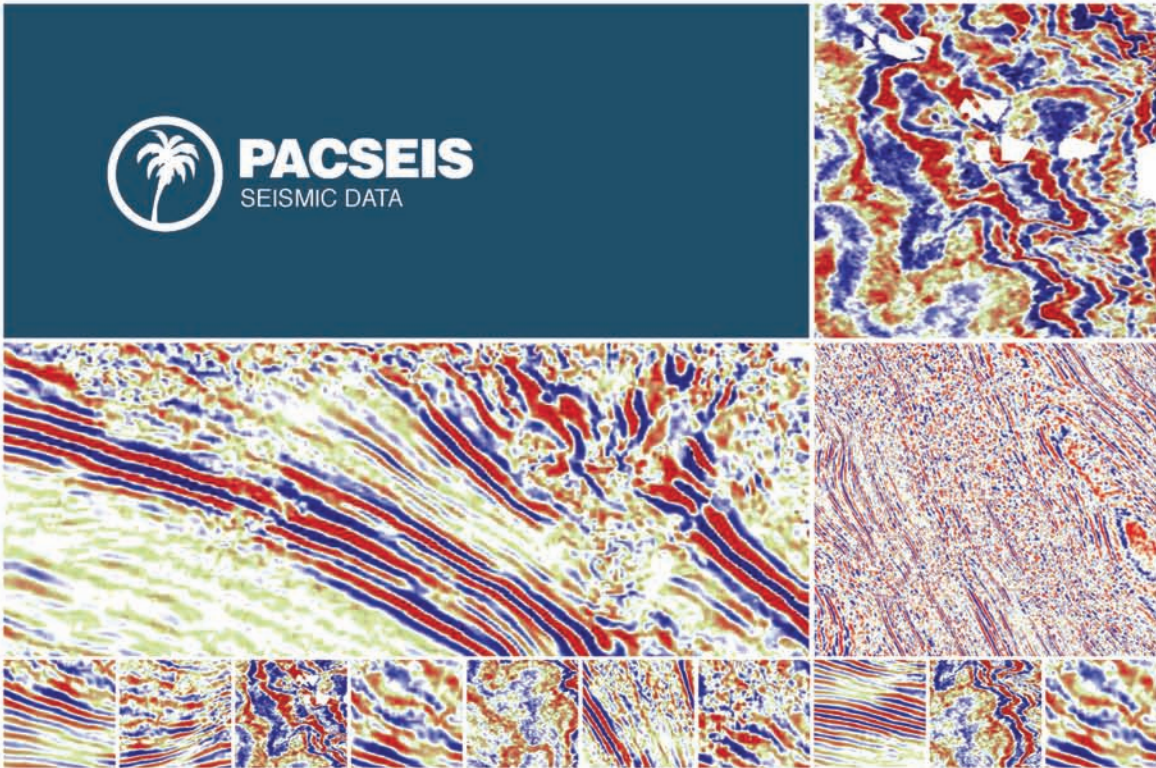
[www.psaapg.org](http://www.psaapg.org)  
[www.aapgrms.org](http://www.aapgrms.org)





PACIFIC SECTION AAPG  
P. O. Box 1072  
BAKERSFIELD, CA 93302

PRESORTED  
STANDARD  
U.S. POSTAGE PAID  
BAKERSFIELD, CA  
PERMIT NO. 1163



PACIFIC SEISMIC COMPANY

## The leader in subsurface information

### RESOURCES THAT DELIVER THE DIFFERENCE

- One of the largest seismic databases available for license
- Seismic available for immediate license  
Over 500,000 line miles of 2D data located in domestic United States (onshore & offshore)
- 2,500 square miles of 3D surveys

### RECENTLY ACQUIRED SEISMIC DATABASES BY PACIFIC SEISMIC CO.

- Chevron USA California, OXY USA Nationwide (including Arco & Enron)
- Santa Fe energy, TXO, Cities Service Oil & Gas Nationwide
- Southern Pacific, PG&E/ NGC, SOHIO

**PACIFIC SEISMIC COMPANY** | Your Full-Service Seismic Brokerage & Acquisition Company

EXPLORATION CONSULTING

PROJECT DEVELOPMENT

Tel (661) 322-1171 | Fax (661) 322-1181 • [www.pacseis.com](http://www.pacseis.com) | Bakersfield | Houston