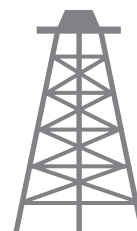




Pacific Petroleum Geology



NEWSLETTER

Pacific Section • American Association of Petroleum Geologists

July & August 2016

AAPG PACIFIC + ROCKY MOUNTAIN SECTIONS JOINT MEETING

NEW PLAYS, NEW WAYS, NEW DAYS



> SAVE THE DATE !

for the first ever joint meeting
of AAPG's Pacific + Rocky
Mountain Sections & take
advantage of many technical &
social opportunities in America's
favorite convention city.

2-5 OCTOBER 2016
PARIS LAS VEGAS HOTEL

For more
information
contact:

www.psaapg.org
www.aapgms.org

Plamen Ganev
PS General Co-Chair
(661) 665-5459
PNGanev@aeraenergy.com

David Hawk
RMS General Co-Chair
(208) 362-9728
dhawk3@cableone.net

Jerry Walker
RMS General Co-Chair
(775) 348-0650
jerry_reno@charter.net



2016 AAPG Pacific + Rocky Mountain Sections Joint Convention Highlights

www.psaapg.org



THANK-YOU

Chevron and California Resources Corporation.



For your continued support of local students.
Your sponsorship funded 317 student dinners
at SJGS scientific talks in 2015-2016.



PAYZONE INC.

Geological, Geophysical, and Petrophysical Consulting Services

661-387-1715

1-Day Training Course: Logs and Log Analysis For California

Introductory course to logs and basic log analysis principles, customized for our unique conditions in California. The goal is to provide you with knowledge you can use right away. We base the course on our decades of practical experience with these logs.

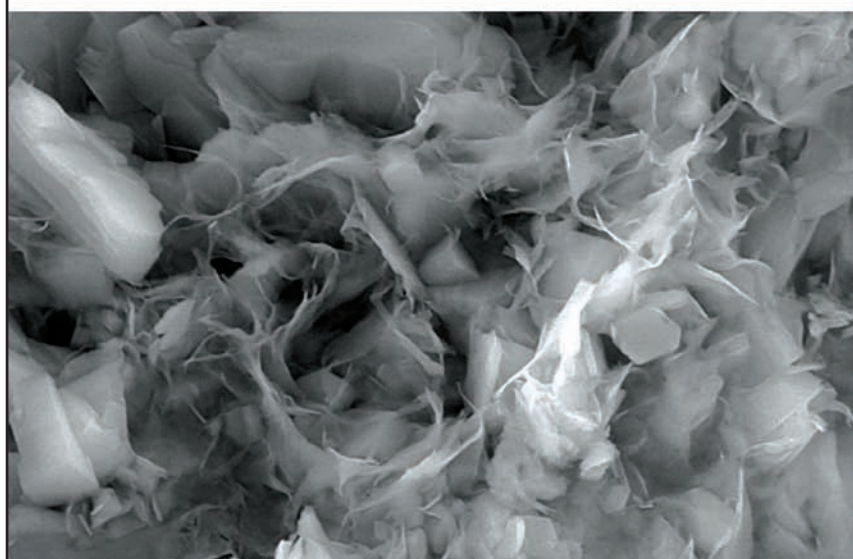
- Use your existing well data more effectively
- Understand what information is needed for better petrophysical results
- Learn how to select the best logging suites for new wells
- Have a log question? Bring it along for class discussion

Deborah Olson, President
dmolson@payzoneinc.com
661-747-0375

June 28, 2016, Bakersfield, CA
Special Pricing Only \$550! Register on our website
www.payzoneinc.com

Tom Howard, Image Analyst
tomh@payzoneinc.com
832-407-2862

ROCK SOLID EXPERIENCE



Core Lab
RESERVOIR OPTIMIZATION

www.corelab.com
661-325-5657

© 2013 Core Laboratories.
All rights reserved.

CALL FOR PAPERS

- ✓ RMAG's *Hot Plays of the Rockies*
- ✓ New Insights in Pacific Exploration
- ✓ Frontier Exploration in the Rockies
- ✓ Redevelopment of Old Fields: Finding the Green in Brownfields
- ✓ Unconventionals: West of the Mississippi River
- ✓ Sedimentology and Stratigraphy: Lacustrine to Deep-Water Reservoirs
- ✓ Geophysics and Petrophysics: From Basins to Pores
- ✓ Structure and Tectonics: New Perspectives and Challenges
- ✓ Energy and the Environment: Regulations and Water Issues
- ✓ Geothermal, Hydrothermal and Uranium Resources

Submission Deadline 30 June 2016

Abstract Limit 250 words | Find more submission instructions at Section websites

For additional information contact:

Jon Allen

PS Technical Program Co-Chair
(661) 654-7516
jonathan.allen@chevron.com
www.psaapg.org

Steve Veal

RMS Technical Program Co-Chair
(303) 945-2630
sveal@palomarnr.com
www.aapg-rms.org



Red Rock Canyon National Conservation Area, Nevada

**NEW PLAYS,
NEW WAYS,
NEW DAYS**

2015-2016 Officers

President Kurt Neher
661-412-5203
kurt.neher@crc.com
president@psaapg.org

President-Elect Robert Horton
661-654-3059
rhorton@csu.edu
president-elect@psaapg.org

Vice President Laura M. Bazeley
(661) 326-1112
lbazeley@wziinc.com
vicepresident@psaapg.org

Secretary Shane Peterson
661.654.7216
ShanePeterson@chevron.com
secretary@psaapg.org

Treasurer 2015-2016 Rebecca Greenberg DeMarais
661-412-5188
rebecca.greenberg@crc.com
treasurer@psaapg.org

Treasurer Elect 2015-2016 Lisa A. Alpert
661- 665-5557
laalpert@aeraenergy.com
treasurer@psaapg.org

Past President John T. Williams
805-231-3793
jtw@petrolog-geological.com
president@psaapg.org

Editor-in-Chief 2014-2016 Vaughn G. Thompson
661-412-5452
vaughn.thompson@crc.com
editor@psaapg.org

Staff

Web Master Jason Minch
661-412-5206
Jason.Minch@crc.com
webmaster@psaapg.org

Membership Chair Randall Stephenson
661-665-5599
RKStephenson@aeraenergy.com

Publications Chair Larry Knauer
661-205-4463
laknauer@aol.com

Advisory Council Representative 2015-2018 Tony Reid
661-412-5467
Tony.Reid@crc.com

5-6 President's Message • *Kurt Neher*

7 2016 AAPG PS + RMS Convention • *Chairs note*

8-11 2016 AAPG PS + RMS Convention • *Field Trips*

12-13 2016 AAPG PS + RMS Convention • *Short Courses*

14-15 2016 AAPG PS + RMS Convention • *Guest Events*

16-18 Member Society News •

- CONTACT THE EDITOR at editor@PSAAPG.org
- Images (graphics, photos, and scans) must be at least 300 dpi resolution. Text should be at least 600 dpi.
- Scanned photos, illustrations (line art) or logos should preferably be submitted as a .tif, .gif, or .bmp; .jpeg is OK.

Advertising Rates

<i>Members</i>	<i>Single Issue</i>	<i>Year (6 issues)</i>
<i>Full Page</i>	\$200.00	\$800.00
<i>Half Page</i>	\$125.00	\$525.00
<i>Quarter Page</i>	\$75.00	\$325.00
<i>Business Card</i>		\$125.00

2016 Advertisements reduced price by 50%
due to drastic drop in oil prices

Societies Free Advertising:

Convention: Unlimited Space in PSAAPG Newsletter
Societies: 1/4 Page in AAPG Explorer

Dear Pacific Section AAPG Members,

I write this last letter as my tenure as *President* of your section comes to a close. I would like to thank the Executive Committee, all Committee Chairs, the Presidents and Executive Committees of our Affiliated Societies, and all the other volunteers that make Pacific Section AAPG a truly unique and wonderful organization. It has been a great experience to work with you and serve our membership, and I am looking forward to staying involved this coming year as your *Past President*.

I would like to welcome the new Executive Committee and wish them every success in the coming year. Newly elected members include Mike Nelson, *President-Elect*, Emily Fisher, *Vice President*, Becca Schempp, *Secretary*, Simmie Chehal, *Treasurer-Elect* and Vaughn Thompson, *Editor-In-Chief*. Robert Horton will transition from *President-Elect* to *President*, and Lisa Alpert will become *Treasurer*. I would also like to congratulate Dan Schwartz on his election to AAPG *Vice President, Sections* (2016-2018). Given his broad experience, Dan will bring a positive and insightful perspective to the AAPG Executive Committee.



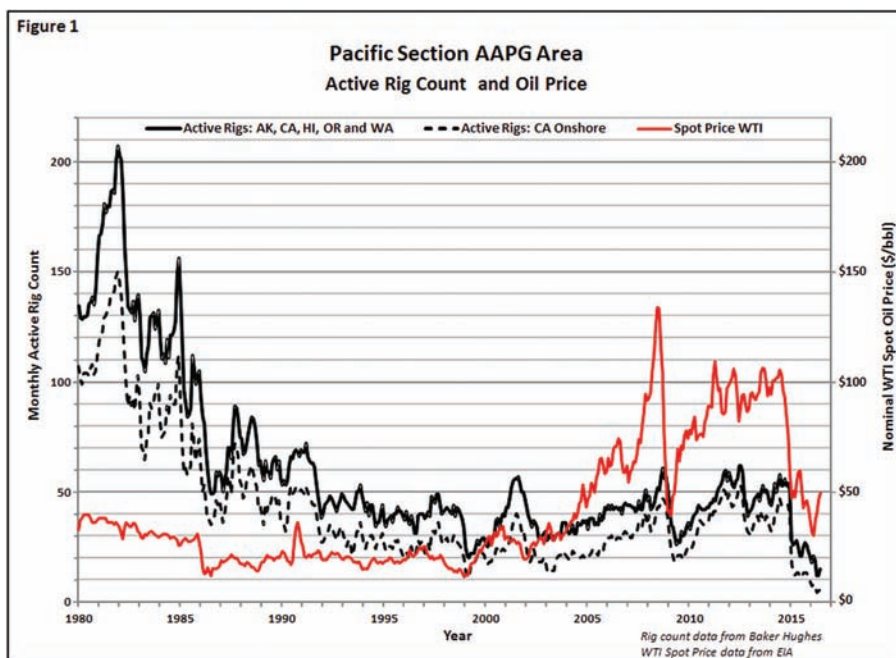
On May 13, PSAAPG, AAPG and the DPA hosted the Playmaker Forum - *Finding Value in Mature Basins*. We had over 130 attendees and 10 truly outstanding talks. I want to thank the speakers, the organizing committee, the volunteers, the corporate and individual sponsors, PSAAPG, AAPG, DPA and all the attendees for making this a fantastic conference. I would also like to give a special thanks to Charles Sternbach for his assistance through the planning process and making the trip out to Bakersfield to present an outstanding talk. Also, we all owe Aera Energy a special thanks for providing the venue for the conference. These are tough times, and every bit of assistance like this has a big impact. Thank you all!

Our sights are now set on the joint Pacific and Rocky Mountain Section AAPG conference scheduled for October 2-5 in Las Vegas. I encourage you all to take advantage of this opportunity to learn, expand your geologic horizons, meet new people, re-establish old friendships and network. When I am faced with a particularly difficult technical problem or am looking for ideas to bring new life to an old field or reservoir, I look outside my immediate surroundings to other basins and fields for new concepts and analogs. This is a significant part of our job responsibility as geoscientists, and AAPG readily makes available the necessary data and information through their publications and conferences. The conferences are particularly valuable to us because so much information and so many ideas, concepts and case studies are presented in such a short period of time. Also, having the ability to directly question and discuss issues with the authors makes it that much more rewarding and valuable. The submission deadline has been extended, so please consider giving an oral or poster presentation. This is particularly valuable for students and early career geoscientists as you will receive critical feedback and insight from geoscientists with a wide range of experience and knowledge. So please take a look at the conference agenda and consider attending.

This last year went by quickly, and it has been interesting to say the least. Looking back, we entered it feeling an oil price recovery was eminent. Past history (Figure 1) indicated this, and the discussion was focused on whether the price recovery would be V-shaped or U-shaped, without any thought that the trend could actually be L-shaped. As 2015 turned to 2016, reality set in, and it began to appear that this low price environment was going to be with us for a considerably longer period of time. Oil and gas companies, service providers and professional organizations took action to reduce costs in order to weather this downturn, and unfortunately this affected many of us here in the PSAAPG region through job losses and lack of opportunities for recently graduated students. Still, I am cautiously optimistic about the future. The current market conditions and geopolitical environment are markedly different from those that drove the price collapse of the mid 1980s, and the recent oil price and rig count increases, albeit very small, are positive signs. This makes me hopeful, but those of you that know me well recognize I am generally an optimistic person. Then again, rational optimism is a critical component of any geoscientist's job description.

A major concern of the PSAAPG Executive Committee, and of industry in general, is how to preserve the great strides we made over the last 10 to 15 years building pipelines to ensure we had the necessary flow of young geoscientists and engineers into our industry. The recent job losses and lack of internships and entry-level positions is understandable given the market conditions, but is disturbing nonetheless. We have discussed providing support to our student members

(Continued on next page)



and YPs, and I applaud the PSAAPG YPs for organizing a YP Networking Event to address this issue. A panel of experienced and mid-career geoscientists will answer questions and discuss how they managed their careers through past downturns in the industry. This PSAAPG YP Networking Event is scheduled for June 23, so it will have taken place before this Newsletter goes to press. I am hopeful that there will be a good turnout and that this will be the first of many similar events to come.

I was impressed with the number of students and YPs that attended the Playmaker Forum in May. In fact, I had written beforehand some notes for my closing remarks, but I threw them away and decided to focus on these early career geoscientists in the audience. All the presenters had invaluable messages for this group of individuals who are the future of our industry. As I listened to each of the presenters, I scratched a few illegible notes on a piece of scrap paper. The following are observations and advice I derived from the talks that I wanted to impress upon our student members and YPs:

- This is a great industry, so stick with it. The demand for fossil fuels will continue throughout our lifetimes, and there remains a significant amount to discover through exploration and increasing recovery efficiency in existing fields.
- Be passionate about your job, career and about our industry, and infect others.
- Learn from experience, but be skeptical and question. Ours is a humbling business, and recognize the difference between what you and others really know, and what you think you know but do not.
- Be confident, but not overconfident (refer to the previous bullet point).
- Do not be afraid of failure. Failure is an integral part of the learning process, and there has been no significant discovery that was not preceded by failure. Just do not repeat your failures. Unfortunately in times like these individuals are afraid to fail because failure could lead to unwanted repercussions. Every organization has people who understand this and can provide guidance and mentorship to early career geoscientists. Search them out.
- Teamwork is critical so learn to work with others effectively.
- Communicate clearly and concisely. Practice and hone your presentations skills, as you are also selling yourself.
- Develop a professional network that will provide support throughout your career.
- Strive to drill wells. Drilling wells is the lifeblood of our industry. Even if you are not actively drilling wells, recognize that the work you do drives drilling and production activity somewhere. Remember this is a business.
- Be passionate and stick with it!

I have enjoyed this past year, and thank you all.

Kurt Neher

PSAAPG President, 2015-2016

Dear PS and RMS AAPG member,

We invite you to attend the 2016 Joint PS+RMS AAPG convention in Las Vegas. As the first ever joint convention between the Pacific and Rocky Mountain Sections, we are honored to serve as the general chairs and hope that you will find this event professionally and personally satisfying. With active members from all states in the Western US, we are looking forward to a strong technical program, rewarding short courses and fieldtrips, stimulating guest events, and numerous opportunities for social interaction and networking.

Conveniently located, Las Vegas is the mecca for any convention in the Western US, and we will take advantage of all this unique city has to offer. The convention headquarters is the beautiful Paris Las Vegas hotel-resort-casino, centrally located on the Strip. Its location allows attendees to fully immerse themselves in convention events, while easily stepping out into the “entertainment capital of the world.”

Expanding our strong technical lineup are our Jackpot Sessions covering RMAG’s Hot Plays of the Rockies, Mountains to Abyss: California Borderland as Archive of Geologic Evolution, Basin-and-Range Province: Strategies for Challenging Conditions, Alaska: Developments in Exploration and Production, and Source Rock Investigations.

We have planned exceptional fieldtrips that any geologist would appreciate, including single or multi-day visits to world-class sites in Nevada, California, and Utah. Our short courses offer you the opportunity to learn more about unconventional plays, ArcGIS in oil and gas, petrophysics and core data integration, sequence stratigraphy, and deep-water reservoirs. Be sure to explore the Map Gallery, which will introduce you to the power of GIS. Guest events include visits to the natural wonders of Red Rock Canyon National Conservation Area and the sinister intrigue of the internationally acclaimed Mob Museum. And much more – special sessions on energy and government regulations and new career opportunities, All-Convention Luncheon speaker Mark Zoback on managing the risk of induced seismicity, and discounted tickets to a dozen Las Vegas shows.

We recognize the hard times our friends and colleagues in the oil-and-gas industry are experiencing these days. We know many of our members have been directly affected by the challenging business environment and we are doing everything we can to create a convention with our members’ needs and concerns in mind. We have established tiered registration pricing to alleviate some of the cost burden and we have secured discounted hotel rates for our members. Please consider registering and booking your room early, as those preferential rates will increase as it gets closer to the convention.

We are very excited to be part of this unique event, and we look forward to seeing you at the 2016 Joint PS+RMS AAPG convention in Las Vegas from October 2nd to October 5th.

Sincerely,

Plamen Ganey PSAAPG Co-chair
David Hawk RMS AAPG Co-chair
Jon Schwalbach PSAAPG Co-chair
Jerry Walker RMS AAPG Co-Chair

**For more information about the convention, abstract submission, registration,
and discounted hotel reservations, visit:
www.psaapg.org/2016convention**

Field Trips

Pre-convention trips

1. Structural Geology and Oil Field Traps of the Western and Southern Margins of the San Joaquin Basin, California

This 2-day field trip starts and ends in Bakersfield, California. On day 1 the group will view and discuss: convergent structures of the northern and central Temblor Ranges; structural traps of the adjacent oil fields; and transpression along San Andreas fault plate boundary. Day will focus on convergent structures of the southern Temblor Range and San Emigdio Mountains, and structural traps of the adjacent oil fields.

Instructor: Thom Davis, PhD, Greg Gordon, PhD

Course length: 2 days

Dates: September 30 – October 1, 2016

Location: California

Sponsor: TBD

Logistical details: Trip begins and ends in Bakersfield, CA. Registration fee includes: guidebook, transportation, two lunches, snack, and beverages. **Lodging is not included in the fee.**

Fee: \$200

CRC geologists hiking in upper San Emigdio Canyon. In the distance are turbidite deposits belonging to the Eocene Tejon Formation along the south limb of the Devil's Kitchen syncline



2. Sheep Range Megabreccias

This trip will examine well-exposed megabreccias in the Sheep Range, 50 miles north of Las Vegas. The development of rift basins during Basin-Range tectonism caused gravity-induced mass movement resulting in deposition of numerous megabreccias of Paleozoic rocks in syntectonic Tertiary strata. Some of these slideblocks are excellent petroleum reservoirs in the region, having tested production rates of 13,000 to 21,000 BOPD. This trip will visit outcrops that show stratigraphic relationships of Tertiary sediments with encased megabreccias, as well as examples of remarkable texture common in these deposits. This field trip may be useful to anyone interested in rift-basin stratigraphy and the potential reservoir rocks associated with those deposits.

Instructors: Peter Guth, PhD, Don French, Jerry Walker

Course length: 1 day

Dates: October 1, 2016

Location: Nevada

Sponsor: Nevada Petroleum and Geothermal Society

Logistical details: Registration fee includes guidebook, transportation, lunch, snacks, and beverages

Fee: \$135 (early bird registration fee: \$110)

(Continued on next page)

3. Trace Fossils in Relation to Eolian Stratification in the Lower Jurassic Aztec Sandstone, Valley of Fire State Park, Southern Nevada

Valley of Fire State Park is the crown jewel of Nevada State Parks. It is famous for its spectacular exposures of red sandstone of the Jurassic Aztec Sandstone and panels of petroglyphs. The Aztec Sandstone is correlative with—and originally contiguous with—the Navajo Sandstone of southern Utah and the Nugget Sandstone of northern Utah and adjacent states; these sandstones preserve portions of a huge Early Jurassic eolian sand sea (erg) desert that occupied a portion of northwestern Pangaea. On this field trip we will examine sedimentological features of the southwestern margin of the Aztec-Navajo-Nugget erg and the footprints of the animals that lived in this ecosystem. Recent research by University of Nevada Las Vegas paleontologists and colleagues have revealed a diversity of trace fossils, including those of theropod dinosaurs, therapsids (protomammals), and arthropods. We will see examples of trackways made by each of these groups of animals. Several sites within Valley of Fire State Park will be visited, including the Visitor Center. The trip will involve short walks over moderately irregular terrain, but no strenuous hiking.

Instructors: Steve Rowland, PhD, Mario V. Caputo, PhD, Gordon Haight

Course length: 1 day

Dates: October 1, 2016

Location: Nevada

Sponsor: Pacific Section SEPM

Logistical details: Registration fee includes guidebook, transportation, lunch, beverages, snacks, and entrance to Valley of Fire State Park

Fee: \$60

4. Introduction to Play-Based Exploration, Spring Mountains Case Study

This one-day trip will focus on the elements of a petroleum system (source, reservoir, trap, seal, charge/timing) using the Spring Mountains as a case study. Cambrian through Jurassic stratigraphy is exposed and repeated by numerous imbricated Sevier Orogeny thrusts. We will look at the stratigraphy and structure and develop possible play concepts based on our observations. We will also compare these with working petroleum systems in thrust belts.

Instructors: Daniel Sturmer, PhD, Steve Carroll, PhD

Course length: 1 day

Dates: October 2, 2016

Location: Nevada

Sponsor: Pacific Section and Rocky Mountain Section AAPG

Logistical details: Registration fee includes guidebook, transportation, lunch, snacks, and beverages

Fee: \$50

(Continued on next page)



EarthQuest Technical Services, LLC

David R. Walter

drwalter@eqtservices.com
www.eqtservices.com

RESERVOIR CHARACTERIZATION
GEOLOGY
PETROPHYSICS
DATABASE MANAGEMENT
DIGITIZING & SCANNING

P.O. Box 1697
Bakersfield, CA 93302
661•321•3136

GREGORY GEOLOGICAL SERVICES

Glenn J. Gregory

California Professional Geologist #3676

4800 Easton Drive, Suite 101
Bakersfield, CA 93309

(661) 633-5555
glennng@bak.rr.com

Field Trips

Post-convention Trips

5. Geology of the Mojave National Desert Preserve, California

This will be “very old school” geology where we hike to the best outcrops and panoramic view locations. Moderate to good level hiking ability is required of the participants (5-7 miles per hike, with about 1,000 feet elevation gains). We will use published geologic maps and our own skills to discuss the principal geologic units of the area (Proterozoic gneissic terrane, Cretaceous granitic plutons, Miocene ash and flow deposits, and Quaternary alluvial deposits), the principal faults and folds, and geologic and tectonic history of the New York Mountains, the Mid-Hills, and the Providence Mountains. Trip recommended for students learning geologic mapping and professionals wishing to revisit why they got into geology in the first place and wanting a tad of a refresher in field skills.

Instructor: Thom Davis, PhD, Yannick Wirtz

Course length: 2 days

Dates: October 5 – October 7, 2016

Location: California

Sponsor: TBD

Logistical details: The group will meet at 1:00 pm, Oct. 5 at the Nipton Road (Hwy 164) exit off I-15. Late arrivals can meet the group at the Hole-In-the-Wall Campground in Mojave National Desert Preserve. The registration fee includes guidebook, camp site fees, snacks, and beverages. **Participants must provide their own transportation (high clearance vehicles recommended), all meals (including lunches), and camping gear.**

Fee: \$90

Thick-bedded Bonanza King dolomite along the east flank of the Providence Mountains with a Big Horn sheep on canyon-side vigil.



Entrance to the silver-rich Bonanza King Mine that is located along the East Providence fault that separates Proterozoic gneiss from Cambrian carbonate units.

(Continued on next page)

6. Jurassic World: Architecture of Ephemeral Streams, Eolian Sand Dunes, and Marine Shoreline, Navajo Sandstone, Carmel Formation, and Page Sandstone, Southwest Utah

The 3-day, 2-night field trip proposed herein will house participants at Parry Lodge in Kanab, Utah, and will take them from Las Vegas to two selected locations east of Kanab in southwest Utah. Field trip theme will focus on eolian sedimentary architecture of two lithostratigraphic units: 1) Middle Jurassic Page Sandstone at White House camp, in the Grand Staircase-Escalante National Monument. Views on short, easy hikes into shallow gullies and on rounded slickrock cliffs are of some of the best developed and exposed eolian stratification on the Colorado Plateau. Depositional associations are: wadi (restricted sense: an ephemeral stream coursing through an eolian sand sea) facies in the Page Sandstone, and microbialite facies in the Middle Jurassic Carmel Formation; and 2) Lower Jurassic Navajo Sandstone along Wire Pass trail in the Paria Canyon Wilderness displays spectacular, contemporaneous brittle and plastic deformation of eolian dune strata.

Instructors: Thomas Anderson, PhD, Mario V. Caputo, PhD

Course length: 2 days

Dates: October 5 – October 7, 2016

Location: Utah

Sponsor: Pacific Section SEPM

Logistical details: Registration fee includes guidebook, transportation, lodging at Parry Lodge in Kanab, UT, ice breaker on Day 1, 2 breakfasts, 2 lunches, and 1 dinner

Fee: \$368



7. Geology of Death Valley National Park, California

This trip provides an overview of the geology and history of Death Valley National Park. Stops to be visited include: Badwater, Zabriskie Point, Dante's View, Mosaic Canyon, Augereberry Point, and Artists Palette.

Instructors: Daniel Sturmer, PhD, Jeff Knott, PhD

Course length: 2 days

Dates: October 5 – October 7, 2016

Location: California

Sponsor: Pacific Section and Rocky Mountain Section AAPG

Logistical details: Registration fee includes guidebook, transportation, lodging in Beatty, NV, 2 lunches, snacks, and beverages

Fee: \$260

Short courses

1. Discovery and Recovery Thinking in Unconventionals

The course begins by summarizing the most important geoscience and engineering aspects of unconventional (low permeability) reservoirs and illustrating these with case study posters that will be evaluated by teams. This is followed by a series of lectures and interactive exercises focused on quantifying the range of possible outcomes for your project and making good decisions about whether to continue or exit at each stage gate.

Instructor: Creties Jenkins, P.E., P.G.

Course length: 2 days

Dates: TBD

Location: TBD

Sponsor: TBD

Fee: \$200

2. Sequence Stratigraphy for Students

This two day short course, for students only, provides a historical perspective on the development of stratigraphy in general and focuses on the development of sequence stratigraphy in particular. Sequence stratigraphy is a methodology that uses stratal surfaces to subdivide the stratigraphic record. This methodology allows the identification of coeval facies, documents the time-transgressive nature of classic lithostratigraphic units, and provides geoscientists with an additional way to analyze and subdivide the stratigraphic record. We provide a mix of lectures and hands-on exercises utilizing datasets that were instrumental in formulating concepts of sequence stratigraphy.

Instructors: Morgan Sullivan, Cameron Campbell, Jonathan Allen

Course length: 2 days

Dates: October 1 – October 2, 2016

Location: TBD

Sponsor: Pacific Section SEPM

Fee: \$55

3. Introduction to ArcGIS for the Petroleum Professional

This short course will focus on the use of ArcGIS in petroleum exploration and development. Learning objectives include an overview of GIS, coordinate reference systems, ArcMap, making and annotating maps, working with tables, georeferencing, creating and editing data, feature edit template options, query and select, Geodatabase, and internet data sources and resources.

Instructors: Sam Limerick, Mike Grieco

Course length: 2 days

Dates: October 1 – October 2, 2016

Location: Chablis Room, Paris Las Vegas

Sponsor: TBD

Fee: \$650

4. Global Deep-Water Siliciclastic Reservoirs

This one-day seminar is designed to provide participants with a modern appreciation of the full spectrum of deep-water reservoirs, their mechanisms of transport and deposition, their stratigraphic architecture, their predictive characteristics, and their 3D heterogeneity. This collaborative course dives downslope in a deep-water depositional system and examines

(Continued on next page)

reservoirs from feeder systems that link the shelf to submarine canyon, to submarine fan, to outer fan, to distal basin plain, using many of the most illustrative outcrop, core, and seismic examples Earth has to offer.

Instructor: Jon Rotzien, PhD

Course length: 1 day

Dates: TBD

Location: TBD

Sponsor: TBD

Fee: \$200

5. Well Log Normalization

The purpose of a normalization procedure is to adjust the logging tool responses from all wells to a common basis so that analysis parameters determined from model calibration can then be applied with confidence to the entire project. Various petrophysical and geological systems contain log normalization modules, but the rationale for performing the normalization task, and the proper procedures to be followed, are seldom explained. The purpose of this course is to provide the attendee with an understanding of the log normalization problem and to present a structured process for constructing a normalized log dataset for use in petrophysical analysis or reservoir modeling.

Instructors: TBD

Course length: 1 day

Dates: TBD

Location: TBD

Sponsor: TBD

Fee: \$200

6. Naturally Fractured Reservoirs

This class is designed to provide the industry geologist and engineer with a working knowledge of fracture characteristics and variability as they affect production in hydrocarbon reservoirs. This is a hands-on, applied course in fracture interpretation, description, analysis, and effects. The main exercise is a hands-on exercise using a 50-piece collection of natural and induced fractures in pieces of core that students are encouraged to pick up and examine as they answer questions about the fractures. Other exercises include assessing fracture strikes in oriented core, and assessing fracture distributions and intensities from core data.

Instructors: John Lorentz, Scott Cooper

Course length: TBD

Dates: TBD

Location: TBD

Sponsor: TBD

Fee: TBD

Marty Hall
Program Development Manager
Multi-Client Services

7765 Windwood Way
P.O. Box 549
Parker, CO 80134
USA

P: 720 851.6152
C: 303 885.8860

geokinetics.com

marty.hall@geokinetics.com





DAVID BURROUGHS
President

GEOLOGICAL LOGGING INC.
9229 Beatty Drive, Suite B
Sacramento, CA 95826
(916) 452-9570 Tel
(408) 307-4653 Cell
(916) 452-9573 Fax
david@geologinc.net

www.geologinc.net

Activities and Guest Events

1. Red Rock Canyon National Conservation Area – Visitor Center and 13-Mile Scenic Drive

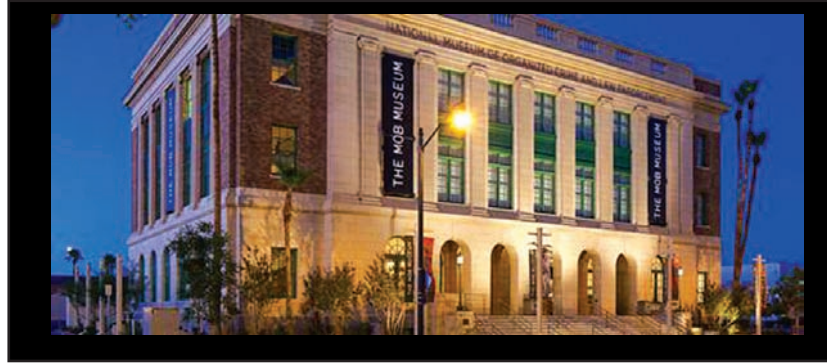
Located just 17 miles west of the Las Vegas Strip, this tour's first stop will be at the Red Rock Canyon National Conservation Area's visitor center, where you can explore the extensive indoor and outdoor exhibits and well stocked bookstore. Along the 13-mile scenic drive, you will encounter spectacular views of the red, white, tan, gray and even purple Calico Hills, White Rock Hills, and Sandstone Bluffs. Wear comfortable walking shoes, as you'll have an opportunity for an easy, short hike (1 mile max) right up to the outcrop of petrified sand dunes of the Aztec Sandstone. Other stops will allow opportunities to absorb the scenic views of the red rock escarpment and overlying gray limestone cliffs of La Madre Mountain, and to take a short walk to the abandoned sandstone quarry. Your journey to the natural side of Las Vegas will be over too quickly, as you'll be back at the Paris Las Vegas in time for a late lunch.



2. National Museum of Organized Crime & Law Enforcement (a.k.a., the Mob Museum)

The Mob Museum provides a world-class, interactive journey through true stories from the birth of the Mob to today's headlines. Shadows and whispers. G-Men and Made Men. Whether you like it or not, this is American history. This eye-opening, authentic view of organized crime's impact on the world reveals an insider's look at the events and characters of the continuing battle between the Mob and the law. Your visit includes a private guided tour, lasting approximately 90 minutes, leaving you time to revisit the museum's crown jewel – the courtroom where the Kefauver Committee hearings in 1950-51 took place – and any of the numerous multi-sensory exhibits.

(Continued on next page)



3. Activities

Registered attendees will have access to discounted tickets to attend world renowned Vegas shows during their time at the convention. Limited number of tickets will be made available to registrants on a first-come-first-serve basis. Some of the shows include:

- Absinthe
- Frankie Moreno- Under The Influence
- Jeff Civillico- Comedy in Action
- Jersey Boys
- Legends in Concert
- Mat Franco
- Menopause, The Musical
- Elvis Jerry Lee Cash Perkins- Million Dollar Quartet
- Paul Zerdin- Mouthing Off
- Puppet Up!
- Rock of Ages

HOME MOVIES TO DVD,
PHOTO GIFTS, RESTORATIONS
& MORE

digital creations

1705 20th St.
(661) 322-5552
digitalcr1@gmail.com

like us on facebook
digital creations.bakersfield

Retirement Planning
College Savings Plans
Financial Planning

The Hopps Group Lydia Hopps & Benjamin Hopps CFP®
Investment Management Consultant
Senior Vice President
Financial Advisor
300 Esplanade Dr., 10th Floor
Oxnard, CA 93036
1 805 278-3609
www.morganstanleyfa.com/thehoppsgroup/

© 2014 Morgan Stanley Smith Barney LLC. Member SIPC.
CRC897562 06/14

Morgan Stanley

Alaska Geological Society

Summer Break from June to September.

Coast Geological Society

Summer Break from June to September.

L.A. Basin Geological Society

Summer Break from June to September.

Northern California Geological Society

Summer Break from June to September.

Northwest Energy Association

Summer Break from June to September.


Sacramento Petroleum Association

Summer Break from June to September.

San Joaquin Geological Society

Summer Break from June to September.





PETROLOG

PETROLOG, INC.
JOHN T. WILLIAMS
Geologist, P.G.#5899, President

Geological Well Logging

P.O. BOX 7028
VENTURA, CA 93006
jtw@petrolog-geological.com

(805) 642-2847 • Fax(805) 980-5569 • Cell(805) 231-3793

Jeremy Brown
Jennifer Sanderson
Co-Owners

3310 Truxtun Ave. Suite 160
Bakersfield, CA 93301

661-864-0397
info@valentienrestaurant.com
www.ValentienRestaurant.com



Alaska Geological Society
www.alaskageology.org

P. O. Box 101288
Anchorage, AK 99510

Contact: Eric Cannon
eccannon@gmail.com



Luncheon meetings are held monthly September through May, usually on the third Thursday of the month, at the BP Energy Center (1014 Energy Court) from 11:30 a.m. to 1:00 p.m. The hot lunch cost is \$20 for members with reservations; \$22 for non-members with reservations; and \$25 without reservations. The box lunch cost is \$13 for members with reservations, \$15 for non-members with reservations, and \$18 without reservations. For reservations, call the AGS reservation voice mail at 907-258-9059 or contact David Hite at hiteconsult@acsalaska.net by noon on Monday before the meeting.

President:	Monte Mabry	monte.mabry@bp.com
President-Elect:	Chad Hults	chadcph@gmail.com
Vice-President:	Steve Wright	vp@alaskageology.org
Secretary:	Dave Buthman	dbuthman@hilcorp.com
Treasurer:	Heather Heusser	heather.heusser@alaska.gov
Past-President:	Keith Torrance	keith.torrance@uicurniaq.com

Coast Geological Society
www.coastgeologicalsociety.org

P. O. Box 3055
Ventura, CA 93006

Contact: Bonnie Walters
805-795-9898



Dinner meetings are held monthly September through May, on the third Tuesday of the month, at Poinsettia Pavilion, 3451 Foothill Road in Ventura. Social hour starts at 6:00 p.m., dinner is served at 7:00 p.m., and the talk starts at 8:00 p.m. The cost of dinner with reservations is \$20 (members), \$25 (non-members), or \$10 (students and K-12 teachers). For reservations, please email Eric White (secretary@coastgeologicalsociety.org), and should be made by 4:00 p.m. on the Friday before the meeting.

President:	Alastair Haddow	president@coastgeologicalsociety.org
Past President:	Bonnie Walters	pastpresident@coastgeologicalsociety.org
Vice President:	Theresa Heirshberg	vicepresident@coastgeologicalsociety.org
Secretary:	Eric White	secretary@coastgeologicalsociety.org
Treasurer:	Stacey Zeck-Boles	treasurer@coastgeologicalsociety.org
Membership chair:	Phil Kaminski	membership@coastgeologicalsociety.org
Webmaster/Tech Support:	John Rice	webmaster@coastgeologicalsociety.org

Los Angeles Basin Geological Society
www.labgs.org

Contact: Jean Kulla
949-500-3095



Luncheon meetings are held monthly September and October; and January through June, usually on the fourth Thursday of the month, at The Grand at Willow Street Conference Centre (4101 E. Willow Street) in Long Beach. Lunch is served at 11:30 a.m., and the talk starts at 12:15 p.m. The cost is \$25 (with reservations), \$30 (without reservations), \$20 for retired members, and \$5 for students. Reservations can be made online at www.labgs.org or by contacting Graham Wilson at 562-326-5278 or GWilson@SHPI.net. Reservations must be made prior to Tuesday before the meeting.

President:	Bert Vogler	hvogler@kleinfelder.com
Vice President:	Jacqueline Chavez	Jacqueline.Chavez@crc.com
Treasurer:	Nicky White	nwhite@geomechanicstech.com
Secretary:	Ryan Weller	ryweller@gmail.com
Scholarships:	Karla Tucker	ktkr2@aol.com
Webmaster:	Ivan Aburto	iaburto@breitburn.com

Northern California Geological Society
www.ncgeolsoc.org

9 Bramblewood Court
Danville, CA 94506-1130

Contact: Mark Sorensen
msorensen64@earthlink.net



Evening meetings are held monthly September through May, usually on the last Wednesday of the month, at the Masonic Center (9 Altarinda Road) in Orinda. Social hour starts at 6:30 p.m., and the talk starts at 7:00 p.m. (no dinner). For reservations, contact Dan Day at danday94@pacbell.net before the meeting. Cost is \$5 per regular member; \$1 per student member; and \$1 per K-12 teachers.

(Continued on next page)

NCGS Officers:

President:	Will Schweller	willschweller@yahoo.com
President-elect:	open	open
Past President	Phil Reed	philecreed@yahoo.com
Treasurer	Barbara Matz	barbara.matz@cbifederalservices.com
Secretary	Dan Day	danday94@pacbell.net
Membership Chair	Tom Barry	tomasbarry@aol.com
Outreach Chair	John Christian	jmc62@sbcglobal.net
Newsletter Editor	Mark Sorensen	msorensen64@earthlink.net
Field Trip Coordinator	Stefano Mazzoni	mazzonigeoscience@gmail.com
Scholarships	Phil Garbutt	plgarbutt@comcast.net
Program Director:	John Karachewski	cageo@sbcglobal.net
Website Editor	Mark Detterman	mdetter1@gmail.com

Northwest Energy Association

www.nwenergy.us

P. O. Box 6679

Portland, OR 97228-6679

Contact:

Jim Jackson or John Armentrout



Luncheon meetings are held monthly September through May, on the third Thursday of the month, at the Multnomah Athletic Club (1849 SW. Salmon Street) in Portland, Oregon. Meeting time is at 11:45 AM to 1:00 PM (speaker about 12:15 PM). The cost is \$25 for members and \$30 for non-members. For information or reservations email NWEnergyAssociation@gmail.com, or our Postal Box: Northwest Energy Association, P.O. Box 6679, Portland, Oregon 97228-6679.

President	Laird Thompson	lbtfrcs@gmail.com
Vice-President	Steven Pappajohn	pappajohn@narpllc.com
Past President	Bill Rodgers	bill.rodgers@stoel.com
Treasurer	Barb Portwood	bbportwood@gmail.com
Co-Treasurer	Jim Jackson	jackson.js@comcast.net
Secretary	Clark Niewendorp	clark.niewendorp@state.or.us

Sacramento Petroleum Association

P. O. Box 1844

Folsom, CA 95630

Contact: Jerry Reedy or Pam Ceccarelli

916-486-2643

916-439-0400



Luncheon meetings held monthly January through November, on the third Wednesday of the month. Location: Club Pheasant Restaurant in West Sacramento. The meetings starts at noon. The cost is \$16 - \$20. For information or reservations, contact Pam Ceccarelli.

President:	Jerry Reedy	JWR5532@aol.com
Vice-President:	Scott Hector	Scott.Hector@gmail.com
Secretary	Derek Jones	djones@gasbiz.com
Editor/Treasurer	Pam Ceccarelli	pc626@comcast.net

San Joaquin Geological Society

www.sanjoaquingeologicalsociety.org

P. O. Box 1056

Bakersfield, CA 93302

Contact: Beckie Burston

BeckieBurston@chevron.com

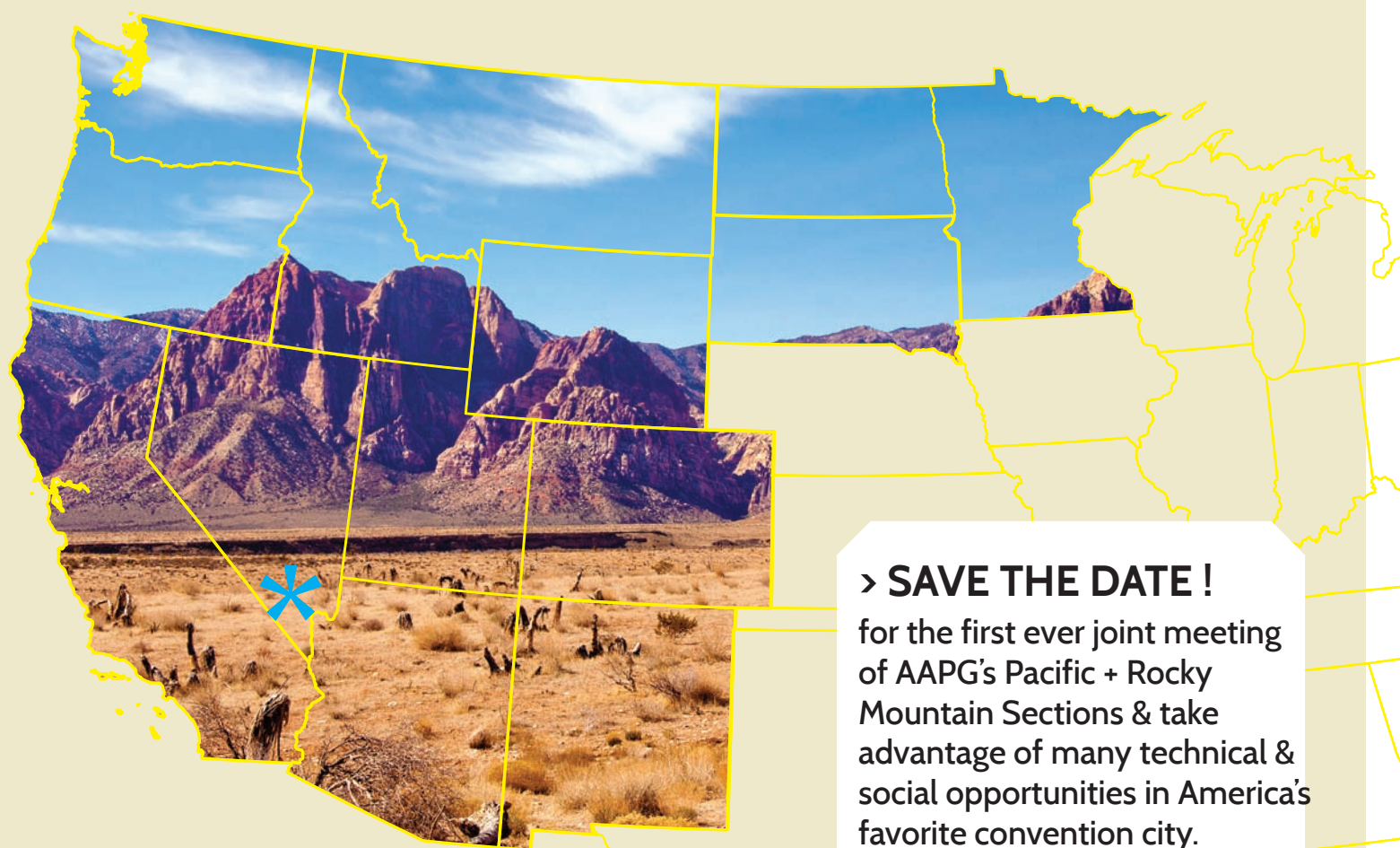


We have dinner meetings on the second Tuesday of the month at the Eagle's Lodge at 1718 17th Street, Bakersfield, CA 93302. There is an icebreaker at 6:00 p.m., dinner at 7:00 p.m., and a talk at 8:00 p.m. Dinner is \$25 for members with reservations and \$30.00 for nonmembers and members without reservations. Students may attend for free.

President:	Greg Gordon	gsgordon@aeraenergy.com
Past President:	Ariel Auffant	aauffant@chevron.com
President-Elect:	Cameron Campbell	cameron.campbell@chevron.com
Vice-President:	Mark Maroun	mgmaroun@aeraenergy.com
Secretary:	Beckie Burston	BeckieBurston@chevron.com
Treasurer:	Kathy Smith	kathysmith@pacseis.com

AAPG PACIFIC + ROCKY MOUNTAIN SECTIONS JOINT MEETING

NEW PLAYS, NEW WAYS, NEW DAYS



> **SAVE THE DATE !**

for the first ever joint meeting of AAPG's Pacific + Rocky Mountain Sections & take advantage of many technical & social opportunities in America's favorite convention city.

2-5 OCTOBER 2016
PARIS LAS VEGAS HOTEL

**For more
information
contact:**

Plamen Ganev
PS General Co-Chair
(661) 665-5459
PNGanev@aeraenergy.com

David Hawk
RMS General Co-Chair
(208) 362-9728
dhawk3@cableone.net

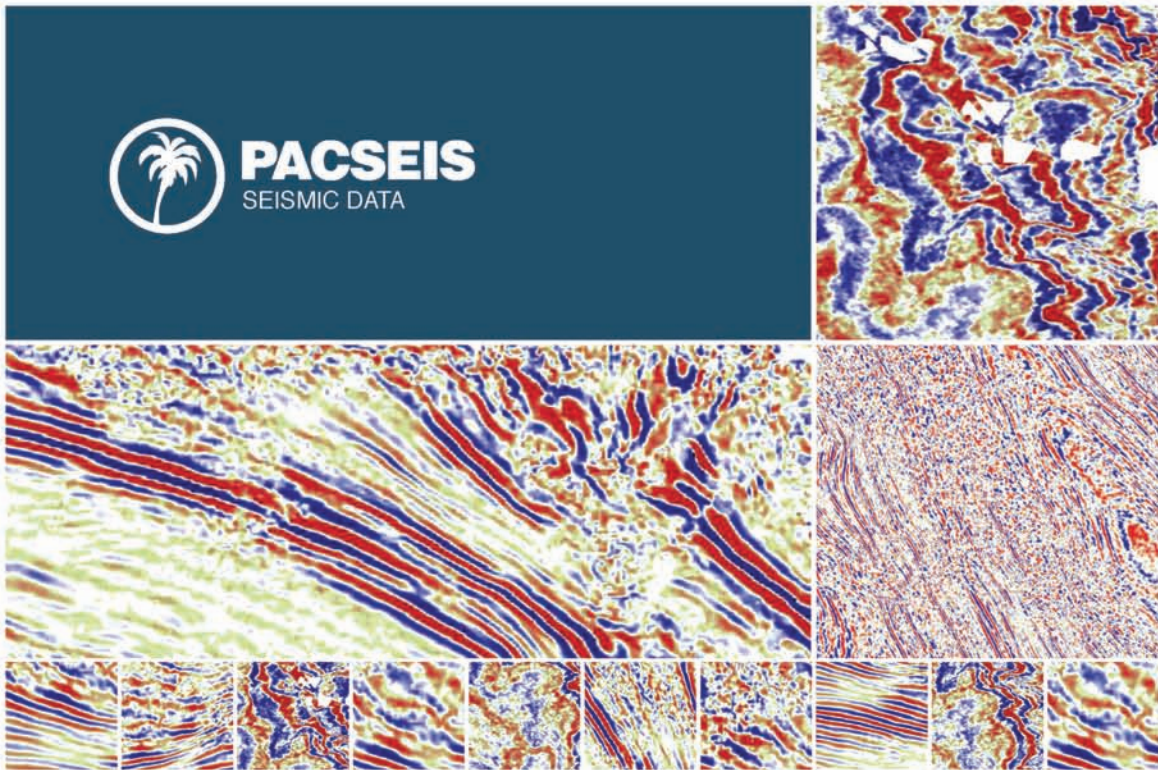
Jerry Walker
RMS General Co-Chair
(775) 348-0650
jerry_reno@charter.net

www.psaapg.org
www.aapgrms.org



PACIFIC SECTION AAPG
P. O. Box 1072
BAKERSFIELD, CA 93302

PRESORTED
STANDARD
U.S. POSTAGE PAID
BAKERSFIELD, CA
PERMIT NO. 1163



PACIFIC SEISMIC COMPANY

The leader in subsurface information

RESOURCES THAT DELIVER THE DIFFERENCE

- One of the largest seismic databases available for license
- Seismic available for immediate license
Over 500,000 line miles of 2D data located in domestic United States (onshore & offshore)
- 2,500 square miles of 3D surveys

RECENTLY ACQUIRED SEISMIC DATABASES BY PACIFIC SEISMIC CO.

- Chevron USA California, OXY USA Nationwide (including Arco & Enron)
- Santa Fe energy, TXO, Cities Service Oil & Gas Nationwide
- Southern Pacific, PG&E/ NGC, SOHIO

PACIFIC SEISMIC COMPANY | Your Full-Service Seismic Brokerage & Acquisition Company

EXPLORATION CONSULTING

PROJECT DEVELOPMENT

Tel (661) 322-1171 | Fax (661) 322-1181 • www.pacseis.com | Bakersfield | Houston