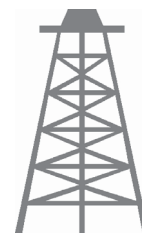




Pacific Petroleum Geology



NEWSLETTER

Pacific Section • American Association of Petroleum Geologists

July & August 2014



Newly elected Officers take charge at PSAAPG and Local Societies

www.psaapg.org



When time is money, Wellsite Geoscience is money well spent.

Whether you're exploring a basin, producing a well or completing a shale play, time is money. That's why Weatherford Laboratories brings a suite of formation evaluation technologies right to the wellsite. Utilizing mud gas and cuttings, these technologies provide detailed data on gas composition, organic richness, mineralogy and chemostratigraphy in near real time. As a result, operators now have an invaluable tool to assist with sweet spot identification, wellbore positioning, completion design and hydraulic fracturing. We call it Science At the Wellsite. You'll call it money well spent.

SCIENCE AT THE WELLSITE™

www.weatherfordlabs.com

Formation Evaluation | Well Construction | Completion | Production

©2013 Weatherford. All rights reserved



2013-2014 OFFICERS

President Dan Schwartz
661.665.5832
dschwartz@aeraenergy.com
president@psaapg.org

President-Elect John Williams
805-231-3793
jtw@petrolog-geological.com
president-elect@psaapg.org

Vice President Jennifer Anderson
661.363.3226
jennifer_anderson@oxy.com
vicepresident@psaapg.org

Secretary Jana McIntyre
661.869.8231
secretary@psaapg.org

Treasurer 2012-2014 Jack Grippi
661.665.5061
jGrippi@aeraenergy.com
treasurer@psaapg.org

Treasurer 2013-2015 Cameron Campbell
661.654.7429
cameron.campbell@chevron.com
treasurer@psaapg.org

Past President Tony Reid
661.412.5467
tony_reid@oxy.com
president@psaapg.org

Editor-in-Chief 2012-2014 Tim Elam
661.378.6790
kyrocks@peoplepc.com
editor@psaapg.org

STAFF

Web Master Jason Minch
661.412.5206
Jason_Minch@oxy.com
webmaster@psaapg.org

Membership Chair Plamen Ganev
661.665.5459
pnganev@aeraenergy.com

Publications Chair Larry Knauer
661.392.2471
LarryKnauer@chevron.com

Advisory Council Representative 2012-2014 Jon Schwalbach
805.648.8518
JRSchwalbach@aeraenergy.com

4-5 President's Message • Dan Schwartz

5-6 President-elect's Message • John Williams

**7 In Memoriam: Bob Cohan
Editor's Corner • Tim Elam**

8 Newly Elected PSAAPG Officers

9-12 2014 PSAAPG Convention Exhibitors and Vendors

13 Summer Field Camp Concerns: ACTION REQUESTED • Rick Behl

14 West Coast Student Expo • Kathleen Marsaglia

14-15 Charles G. (Gil) Mull: An Appreciation • Marwan Wartes

17-18 2014 Coast Geological Society Awards and Scholarships • Alastair Haddow

19 FOSSILS Cartoon • David Crane

19-22 Member Society News

COVER PHOTO: View of Mt. McKinley from Sable Pass on the Denali National Park & Preserve Road-2013 Alaska Geological Society Field Trip; *photographer unknown*

- CONTACT THE EDITOR at editor@PSAAPG.org or kyrocks@peoplepc.com.
- Images (graphics, photos, and scans) must be at least 300 dpi resolution. Text should be at least 600 dpi.
- Scanned photos, illustrations (line art) or logos should preferably be submitted as a .tif, .gif, or .bmp; .jpeg is OK.

Advertising Rates

Members	Single Issue	Year(6issues)
Full Page	\$400.00	\$1600.00
Half Page	\$250.00	\$1050.00
Quarter Page	\$150.00	\$650.00
Business Card		\$250.00

Societies Free Advertising:

*Convention: Unlimited Space in PSAAPG Newsletter
Societies: 1/4 Page in AAPG Explorer*

Dear Pacific Section AAPG Members,

This is my last Presidents' message. It's amazing how fast the year has gone. When I took up the presidential mace (yes there actually is a mace, see the attached photo), our organization was in very good shape after Tony Reid's tenure as President. Financially we were sound after the National AAPG Convention in Long Beach and the Section Convention in Monterey, we had started a new PS-AAPG Scholarship program thanks to the passion and dedication of Cynthia Huggins and the tireless efforts of Jana McIntyre, our IBA program was strong with five schools competing to represent the Section at the Global competition (University of Alaska, Fairbanks; University of California, Santa Barbara; California State University Long Beach; San Diego State University; and California State University, Bakersfield), our membership was fairly stable and our student outreach programs were expanding across California.



In the past twelve months, we continued to address our mandate to educate ourselves, share what we know, teach others, and demonstrate excellence in our profession. Our convention in Bakersfield was the 87th Annual Section Meeting, and was a technical and financial success. Thank you very much to Kevin Weberling and his team for making this event happen so smoothly and to the San Joaquin Geological Society for hosting the gathering. Over 650 registrants took part in the gathering. There were excellent field trips and short courses, the technical program was very comprehensive and many great papers were given in the oral and poster sessions. The exhibit hall was very active, and the luncheons were outstanding. The keynote speaker for the All-Convention Luncheon was Lee Kryshtinik, AAPG President. His talk on pushing back Hubbard's curve was really good and energizing. We also honored several of our colleagues for their accomplishments and their dedication to their profession. Steven Kiouses was the Teacher of the Year awardee. Honorary Life Member awards were presented to Robert D. Hoffman and Stephen A. (Tony) Reid. We honored three members for their Distinguished Service: Bonnie Bloeser, Timothy D. Elam, and Cynthia A. Huggins. Janice M. Gillespie was presented with the Distinguished Educator Award. Todd Greene received the Levorsen Best Paper Award and Brian Gray received the H. Victor Church Best Paper Award. These two awards are from the Section meeting in Monterey. We also presented awards to 13 Van Couvering Students from Cal State Bakersfield, Fresno State, and Cal State Northridge. I am looking forward to next year in Ventura/Oxnard where Joan Barminski will be Chair and 2016 in Las Vegas, where Plamen Ganey will be Chair.

The IBA teams who competed in Bakersfield were excellent and the San Diego State University team did very well at the AAPG ACE in Houston. I was very pleased to visit with our affiliated society in Portland, Oregon (Northwest Energy Association). Under the leadership of John Armentrout, Jim Jackson, and Garth Tallman, they have re-energized that organization, with new student chapters (University of Oregon), scholarships to area University students, and well attended Society meetings. Our overall student chapter roster has grown to 14 active chapters spread across California and Alaska. Thanks go to our Student Liaison Becca Lanners and to Emily Fisher for their efforts. Several schools are going through the process of establishing new student chapters.

I am very proud of our Scholarship Program. We put convention revenues and donations into the Foundation that would be earmarked for scholarships. We initially targeted the annual outlay at \$24,000. In the first year of the scholarship program we presented \$12,000 in funds to Section students. This year, that amount provided directly to students to support their studies was \$23,000. Congratulations to 25 students that were recognized by your local Societies and the Pacific Section.

I want to extend my sincere appreciation and thanks to the Executive Committee and Standing & Ad Hoc Committee members who made the job easy and enjoyable. Tony Reid (Past-President) provided his sage advice and guidance throughout the year. John Williams (President-Elect) provided energy, support, and knowledge based on his House of Delegates experience. Thanks to Jennifer Anderson for her efforts to keep us on track with our annual calendar and for helping with ad hoc requests. Jack Grippi was Treasurer, providing solid leadership and fiscal responsibility to the role. Thank you to Cameron Campbell (Treasurer-elect) for his efforts to keep up with Jack and his work on the IBA program. In my opinion, there are two tough jobs on the ExComm. Jana McIntyre had the toughest job, Secretary. She did an outstanding job, being very responsive and thorough, providing excellent advice and insights that added much to the discussion at the meetings and behind the scenes. Running neck and neck with Jana for toughest job was Tim Elam, our Editor. Tim has raised the game in the quality and quantity of information and interesting stories in the Pacific Section Newsletter.

(Continued on next page)

There are several members that play key roles in the organization. Plamen Ganey did an outstanding job as Membership Chair. He pulled together the Society membership chairs in an effort to streamline the membership process. Jason Minch took over the webmaster role from Greg Hummel. Both have done an amazing job of up grading and maintaining our website, which is seen as a best practice by AAPG National. Bob Lindblom is the Honors and Awards Committee Chair. Bob is a powerhouse, bringing energy and focus to the task of identifying and recognizing those members of PS-AAPG who have contributed so much to the Section and to the community. Larry Knauer is Publications Chair. He did a great job creating and distributing the Membership Directory and several technical publications. Kay Pitts was ever-present during the year. Officially she is Chair of the Committee on Conventions. She worked tirelessly on the Bakersfield convention, and ensured that we have a suitable venue for the meeting in Oxnard. Bob Ballog is Teacher of the Year Chair. Bob works closely with the Societies to locate candidates from the community. Jon Allen worked to build a Young Professional network, which has taken hold in Bakersfield. Special thanks to Cynthia Huggins, the Scholarship and IBA Chair. She worked extremely hard to make these programs the success they are today. Without her commitment they would not have the appeal or impact that they currently hold. Lastly, I want to also thank the Affiliated Society Presidents and Representatives. This is a great group of people that have ably represented their members and ensured that there is a close relationship between the Section and their Societies. Thanks to Laura Bazeley and Anne Draucker from the SJGS; Jean Kulla and Becca Lanners from the LABGS; Peter Morris and Jon Schwalbach from the CGS; Phil Reed and Paul Henshaw from the NCGS, Jerry Reedy and Scott Hector from the SPA; Jim Jackson and John Armentrout from NWEA; and Matt Frankforter from the AGS.

Now it's time for John Williams to step in and take the reins from July 2014 to July 2015. I wish you all the luck and rewards that this position holds.

It has been a good year. Thank you all for your contributions.

Be safe.

Best Regards,

Dan Schwartz, President 2013-2014



Message From Incoming 2014- 2015 President John Williams

President-Elect was a good job – participate, but have only a few official duties. Responsibilities included – learning more about the Pac Section and our long term plan; attend ExComm meetings and the monthly 'Section Presidents Teleconference'; express appreciation and thanks to PS donors; attend 'AAPG Leadership Days' in Tulsa, OK, judge at the PS AAPG Student Expo and Job Fair at Cal State Northridge. Unofficial duties included: attending 'affiliated Society meetings', PS 'Convention' and the AAPG National Exposition. I am sure Kurt Neher; our new President-Elect will enjoy the job.



PS has a strong cadre of leaders that make us exceptional. You lead by presence, commitment, continuity and knowhow; you are recognized and respected. Our leaders span decades, passing knowledge down and through to each successive officer. Elders like Bob Lindblom and Tom Wright continue; seasoned leaders - like Tom Hopps, Tony Reid, Dan Schwartz, Larry Knauer, Scott Hector, and Kay Pitts – are renowned. YP's reshape our legacy - like Jon Allen, Emily Fisher, Anne Draucker, Rebecca Greenberg DeMarais, Vaughn Thompson, they are amazing. This is a short list of leaders that makes PS the best small Section of the AAPG. We are only 1000 active members; meaning more heavy lifting than in the larger Sections. Our minds are together – on success. I thank you all.

(Continued on next page)

The 2014 Exposition and Conference in Bakersfield were exciting, uplifting, and successful. The 'ACE' is our largest fund raising forum – a showcase. Field trips, short courses, technical talks, poster sessions, luncheons and breakfasts; plus honors and awards, exhibition, sponsorships; with specialization lead by Students, YP'S, SEPM, SEG, HOD, DEG, DPA, AAPG . . . WOW! This is guided by our Convention Committee (and a few others). It is a montage, a quilt, with each volunteer individually leading their part, task takers making it happen, an 'All American' organization in motion. Our 2015 'ACE', will be hosted by 'CGS' and chaired by Joan Barminski, in Ventura, May 3-6, 2015, at the Mandalay Beach Hotel and Resort Embassy Suites. Hope you can be there!

Scholarships, chaired by Cynthia Huggins – enhance the awards at our seven affiliated societies – with twenty-five individual scholarships in 2014. Donations and 'Convention' income make this possible. Our 'Foundation' chaired by Mark Wilson, awarded 13 students with the Martin Van Couvering award. PS is expanding student outreach, through leaders who have founded AAPG Student Chapters at fourteen Universities and Colleges. PS is a major supporter of the CSUN AAPG-SEG West Coast Student EXPO. Students present their work through 'Poster Sessions' and presentations. The EXPO is also the 'West' foremost employment opportunity. The PS supports the exciting 'IBA' (Imperial Barrel Award) intercollegiate prospecting competition, where teams from each university compete in regional exploration, generating play concepts and prospects – then present to 'the management'. Coming in August is 'AAPG Leadership Days' includes PS YP's and students, meeting in Snowbird, Utah.

It is proposed that the PS create a new award that would recognize YP's (35 years and younger). The award will come under the stewardship of the 'Honors and Awards', to recognize one or several outstanding 'Young Professional(s)' each year, whose service and professionalism, is exemplary. The details are to be defined, plus an official award needs a place in our 'By-Laws' - your suggestions are requested.

Plamen Ganev, Membership Chair, is working to streamline our membership and the dues process. We are working to simplify, so 'Society' members are also PS members. We need continued membership to keep us strong. As geologists from academic, government, corporate, consulting, and services; we are the ambassadors, educating the public on energy, creating prestige and distinction. The PS AAPG is our place to assemble as petroleum geologists and earth science professionals, a strong membership creates lasting tangible benefits and intangible satisfaction.

Questions for the curious:

- Who was the first to recognize 'faunal succession?; and complete the first true geologic map?; and what was his nickname?
- Who is the author and what is the title of the book about these discoveries? *Answers on page 19.*

- Thanks, John W.

PAYZONE INC.
 Geological, Geophysical, and Petrophysical Consulting Services for the Petroleum Industry 661-387-1715

<ul style="list-style-type: none"> • Training in advanced log analysis focused on California • Accurate, consistent fieldwide reservoir properties for modeling 	<ul style="list-style-type: none"> • Old E-Log Interpretation • Rock properties from sand/diatomite/shale sequences • Log data management/digital log database cleanup • 2D/3D seismic interpretation, specializing in old 2D data
---	--

Our petrophysical models for diatomite and California sands are based on over 30 years of experience with these rocks, including core, log, and lithology data from every basin in the state

Deborah Olson, President dmolson@payzoneinc.com 661-747-0375	Now Offering Image Log Interpretation Services! www.payzoneinc.com	Tom Howard, Image Analyst tomh@payzoneinc.com 832-407-2862
--	--	--

Bob Cohan

Robert "Bob" Alan Cohan was born in Brooklyn, New York. He passed away June 3 in Bakersfield at the age of 57. Growing up in Rockaway Beach, Bob worked as a lifeguard and earned the title "Surfer Bob" for his love of the ocean. Others knew him as "Bullet" for his love of speeding downhill on his skateboard.



Bob graduated with a Bachelor of Science in Geology from State University of New York at Oneonta in 1979 and went on to forge an impressive 30-year career in the oil and gas industry, starting with Western Geophysical on a seismic crew in the Rockies. Then Bob took a job with a reservoir engineering consulting firm in Denver, H.K. Van Poolen and Associates. After working at other independent oil and gas companies, Bob ended up at Aspen Exploration Corporation where he would eventually rise to President and CFO after 17 years. Bob was known in the industry for his outstanding honesty, discipline, fun-loving nature, and perhaps most of all, a high strike rate.

After meeting his wife on a blind date in Denver, Bob moved to Bakersfield with his family. While living in Bakersfield, Bob became deeply involved in the Relay for Life, a cancer fund-raising activity, earning the title of top individual fundraiser multiple years. He loved collecting shark teeth, many of which came from Shark Tooth Hill in Kern County. He also loved running (he ran 5 marathons during his life), hiking, collecting sea shells, music by the Grateful Dead (especially Wharf Rat!), and his friends and family. Bob was involved in Buena Vista Museum of Natural History and the Kern Valley Hiking Club. He was a member of the Society of Petroleum Engineers and of the American Association of Petroleum Geologists.

If you knew Bob, chances are he gave you a nickname or two. Even after suffering from Hodgkin's Lymphoma at 31 and a massive stroke in 2008, Bob never lost his lust for life and enjoyed every day up until the very end. No matter the day, life was great! In the end, Bob passed away doing what he loved - walking his five miles a day. Bob is survived by, Kristy Cohan, his wife of 30 years, and his two sons, Cody and West. Donations can be made to the Kern County Valley Caregiver Support Group in Bob's memory. Per his wishes, a private service will be held at a later date. He will be dearly missed.

- Information from The Bakersfield Californian and The SPA Newsletter

EDITORS CORNER

Friends,

This is the last newsletter I'll prepare...my two-year term as Editor-in-Chief is coming to an end. It has been an interesting and fulfilling job to create the PSAAPG PPG newsletter semi-monthly since 2012. I enjoyed it! I have many folks to thank for assisting me in many ways, including Ed Washburn, Plamen Ganev, Larry Knauer, Evan Bargnesi, Greg Hummel and Jason Minch...and you...readers and submitters of material for the newsletter. I hope I'm not leaving someone out! Functioning on the PSAAPG EXCOM has allowed me to work with a great group of folks.



I appreciate outgoing President Schwartz's kind words about the newsletter in his column this month. I tried to bring you interesting, pertinent information, particularly about the people of PSAAPG, our conventions, and scholarships, activities, and service efforts within our member societies. I have tried to put in at least one feature original geologic article in each newsletter. As much as I love geology, I felt it difficult to present detailed technical information or controversial topics in this newsletter. Other avenues... journals, society meetings, and conventions... are more appropriate vehicles to disperse in-depth technical information.

This is a time when transmission of information can be done many ways, and I appreciate Jason Minch continuing with the responsibility of handling extremely important website activities. I know the incoming Editor-in-Chief, Vaughn Thompson, has immense energy and talent and will be a great PPG newsletter editor working with Jason. So for now, consider my Crater Lake boat tour guide picture above, microphone in hand, to be my sign off.

-Tim Elam

Newly elected PSAAPG Officers 2014-2015



**President-elect
Kurt Neher**



**Vice-President
Jonathan Allen**



**Treasurer-elect
Rebecca Greenberg DeMarais**



**Editor-in-chief
Vaughn Thompson**



**Secretary
Malcolm Allan**

Special Core Analysis In Bakersfield



Core Lab
RESERVOIR OPTIMIZATION

Laboratory Services Include:

- Capillary Pressure • Relative Permeability • Formation Damage Studies • Electrical Analyses • Environmental Studies

Core Laboratories, Inc • 3437 Landco Drive • Bakersfield, CA 93308
Tel: (661) 325-5657 • Fax: (661) 325-5808



AAPG



AECOM



ALS Corpro



AERA Energy



Association of Women Geoscientists



Bakersfield Association of Art



Baker Hughes



California Department of Conservation (DOGGR)



California Geological Survey



California State Univ. Bakersfield- Geology Dept.



Canamera



Chevron Corp.

Photos by the Editor



Core Lab



DHI Services



Dynamic Graphics



EV Downhole Video



GEOCARE



LMKR Geographix



GlassPoint Solar

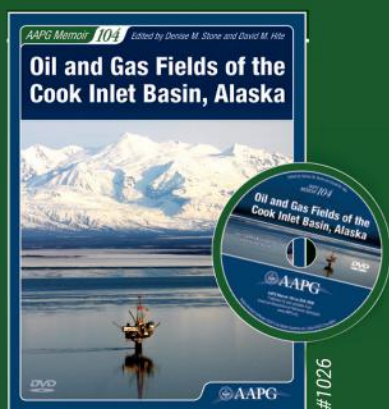


Halliburton



Horizon Well Logging

Photos by the Editor



Memoir 104 Oil and Gas Fields of the Cook Inlet Basin, Alaska

AAPG Member Price: \$79 • List Price: \$159
(plus shipping/handling)

*International shipping
via courier method only.*

Buy. Register. Download.



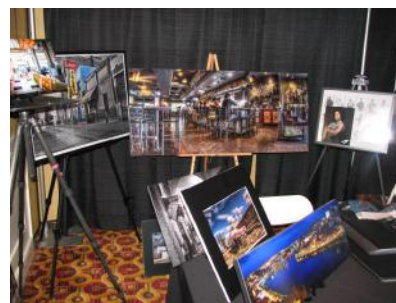
AAPG
Publications



IHS



Maura's Treasure Box



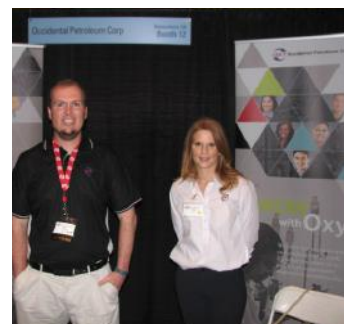
Mike Lewis Photography



Navajo Trading Post



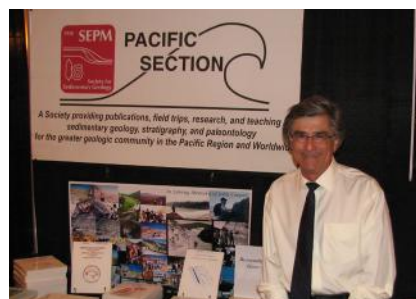
Neuralog



Occidental Petroleum Corp.

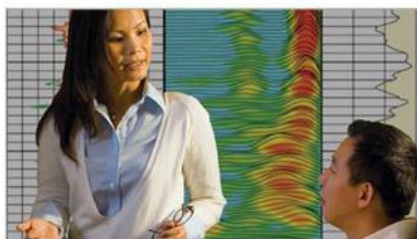


PSAAPG Publications



PS-SEPM Publications

Photos by the Editor



Wireline Systems
Sales: 661.336.3100
Operations: 661.765.2020
www.bakerhughes.com | Advancing Reservoir Performance



PayZone



Pengo Wireline



Schlumberger



**Weatherford - inside Conv.
Center booth display**



**Weatherford- outside Conv.
Center trailer display**

Photos by the Editor

Marty Hall
US Marketing / Sales Manager

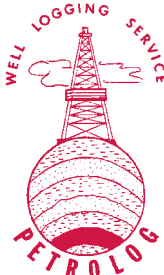


7765 Windwood Way
P.O. Box 549
Parker, CO 80134
USA

P: 720.851.6152
C: 303.885.8860

C: +1(303) 885.8860

geokinetics.com
marty.hall@geokinetics.com
marty.hall@geokinetics.com



PETROLOG
PETROLOG, INC.
JOHN T. WILLIAMS
Geologist, P.G. #5899, President

Geological Well Logging


P.O. BOX 7028
VENTURA, CA 93006
jtw@petrolog-geological.com

(805) 642-2847 • Fax(805) 980-5569 • Cell(805) 231-3793

Michael R Lewis
Photography

Michael R Lewis
Commercial Photography

661-246-8466
mrlphoto@yahoo.com
1527 19th Street, Suite 332
Bakersfield, Ca 93301



www.mrlphotobako.com

Geolog



ERNE BURROUGHS
President/Owner
Registered Geologist No. 1628

GEOLOGICAL LOGGING INC.
9229 Beatty Drive, Suite B
Sacramento, CA 95826
Telephone 916-452-9570
Cell 952-8975 Fax 452-9573
geolog@sbcglobal.net

Dear Friends and Colleagues,

CSULB and some of the other state universities are facing a new threat to running summer field camps. State policy prohibits requiring students to take classes or fulfill other requirements that cannot be accomplished by enrollment in state-supported classes. For budgeting and political reasons, many (most) summer sessions are no longer "state-supported", but are financially self-supporting by tuition fees. Therefore, we will no longer be allowed to require a class for the BS degree (Summer Field Geology) that requires enrollment during the self-supported summer program. The policy is not new, but it is now being enforced. Older work-arounds like having students enroll in Spring, but complete the class in Summer will not be allowed for liability and other legal reasons.

Our Department feels that the immersive experience of a >4-week summer field geology class, where students have the challenge and time to work out complex real-world relationships is essential to training competent professional geologists. Fortunately, there may be a solution to the quandary. Under special circumstances, state-support can be implemented for summer courses or activities. However, this will require that administrators are so convinced of the compelling need that they are willing to implement special policy exceptions.

We need your help to make this case. If you agree with the value of immersive field training, I urgently request that each of you write a brief letter explaining the critical nature of such extended field experience (Summer Field Geology) for the professional development of geologists that will contribute to our state's economic, environmental, energy, and infrastructural well-being.

Please send the letters to our department to compile and present en masse by email or post (address below), but address the actual letter to:

President Jane Conoley, PhD.
California State University Long Beach

We thank you for your help. Our students also will thank you for your help.
Sincerely,

-Rick

Richard J. Behl
Professor, Department of Geological Sciences
California State University, Long Beach

NEXT Newsletter Deadline

(September/October Issue): September 1st, 2014

FORT DAVIS PALEONTOLOGIC & STRATIGRAPHIC CONSULTANTS

William G. Reay

112 Arabella Dr
Fort Davis, TX, 79734
432.426.2443

wgreay@mztv.net

Age dating and environmental determinations of the
LA Basin, the Ventura Basin, the San Joaquin and
Sacramento sections, as well as the Alaskan Cook Inlet and
Post Paleozoic North Slopes section

Michael A. Riddle
Sales & Solutions

Wireline & Testing
5080 California Ave., Ste. 400
Bakersfield, CA 93309
Mobile: (661) 978-5719
Main: (661) 387-7300
riddle2@slb.com

Schlumberger

Be at the Epicenter...

AAPG-SEG

West Coast Student Expo

2 - 4 October 2014

**California State University,
Northridge**

***Student poster presentations, company
interviews, networking, field trips, and more...***

**Interested Companies and Students see
Registration Information at:
[www.csun.edu/science-mathematics/geology/
aapg-seg-west-coast-student-expo](http://www.csun.edu/science-mathematics/geology/aapg-seg-west-coast-student-expo)**

The West Coast Student Expo has become a premier event that gathers students with prospective employers, and functions as a great technical information exchange as well. It will be held at the University Student Union at Cal State-Northridge. This year, the event will occur October 2-4, 2014.

Last year, 151 students from 35 schools in nine states and three countries participated. Seven prospective employers (six companies and one federal agency) were present as participating organizations.

Registration should open to students August 20, 2014. Details for companies and government agencies, and sponsors are NOW AVAILABLE on the website.

Students and other attendees should check the website listed above in August for details of the event schedule and hotel and venue information.

Charles G. (Gil) Mull...an Appreciation

"Geologists inhabit scenes that no one ever saw, scenes of global sweep, gone and gone again, including seas, mountains, rivers, forests, and archipelagos of aching beauty, rising in volcanic violence to settle down quietly and forever disappear--almost disappear."—John McPhee

Charles G. (Gil) Mull is one the most widely respected geologists to ever work in Alaska. His outstanding contributions to our understanding of the stratigraphy, structure, tectonics and petroleum geology of northern Alaska resulted from more than four decades of field work, often in extremely difficult conditions. The breadth of his knowledge of the region is matched by his prodigious memory of place, including recollections of seemingly every outcrop he ever visited. As Gil's legend grew, he was often affectionately referred to as the "Mullacle", becoming widely sought out by anyone desiring an introduction to the geology of the Brooks Range or North Slope. His selfless sharing of knowledge and ideas influenced countless geologists and fundamentally shaped the way we think about the geology of northern Alaska.



Gil received both his Bachelors (1957) and Masters (1960) degrees from the University of Colorado. However, he quickly felt the draw of the Arctic, beginning his first field campaigns in Alaska in 1961 with Richfield Oil. He went on to also work for Atlantic Richfield and Exxon, spending more than a dozen summers conducting regional geologic mapping spanning much of the Brooks Range and North Slope.

His accomplishments during his time with industry are difficult to overstate; perhaps the best example was his role in the exploration and discovery of the Prudhoe Bay oil field, including serving as well site geologist on the discovery well. This remains the largest conventional accumulation yet found in North America and utterly changed the course of history in Alaska.

To avoid being transferred to Houston for a “desk job”, Gil joined the USGS in 1975. There he was a major participant in the federal government’s ambitious exploration program in the National Petroleum Reserve-Alaska (NPRA). During his six-year tenure with the USGS, he published a number of important papers, including some of the first assessments of the hydrocarbon potential of the Arctic National Wildlife Refuge (ANWR).


In 1981, Gil continued his career-long efforts to remain an Alaska field geologist, joining the State’s Division of Geological and Geophysical Surveys (DGGS). During his two decades with DGGS, Gil was a tireless advocate of the role of field geology in exploration efforts. He pressed continually for field work on economically significant units, eventually creating an industrial consortium to support North Slope petroleum-related studies. This successful program represents a very unique collaboration between the public and private sectors. While at DGGS, Gil was also adjunct faculty at the University of Alaska Fairbanks, where he mentored and supported countless students. As an advisor, Gil was remarkably selfless, sharing his insights and data, often allowing the student to take ownership of an idea that he’d arrived at through years of painstaking field mapping. His mentorship successfully guided a generation of students that now populate academia, government surveys, and industry.

Throughout his career, Gil’s primary focus was fundamental geologic mapping of northern Alaska and his impressive list of published maps no doubt defines his geologic legacy. However, his dozens of papers also demonstrate his unique ability to interpret the regional geology, distilling its complexity into a cogent model. Much of our present understanding of the tectonic and stratigraphic evolution of the Brooks Range and its foreland basin harken back to one of Gil’s many seminal publications. His remarkable two-volume guidebook of the Dalton Highway will continue to inspire future geologists who traverse one of North America’s great orogenic belts.

Gil is a remarkable scientist with an unmatched passion for geology. His almost romantic view of field geology is well expressed in one of his favorite quotes by John McPhee (above). I am honored to write these words and can say without hyperbole that his example profoundly influenced my career path; I will never know a better mentor. Gil has been an active member of the AAPG for more than a half-century and his distinguished career contributions to petroleum geology warrant this recognition, the highest award bestowed by the Pacific Section—Honorary Life Membership.

-Marwan A. Wartes

Editor’s Note: Marwan Wartes suggested printing this 2011 citation of PSAAPG Honorary Membership Award for Gil Mull in the PPG newsletter. It had not been previously printed, and the acknowledgement is warranted. Thank you, Marwan.



strata-graphic
GEOLOGIC WELL LOGGING
R. Larry Swarens
Geologist / Owner

(916) 206-2956
strata-graphic.com
stratagraphic@surewest.net

P.O. Box 41468
Sacramento, CA 95841

J.M. “BUZZ” DELANO, JR.
Consultant

Cell (661) 747-0337
Office (661) 832-5229
Fax (661) 832-5229
Email: BuzzBake@aol.com

Delano Petrophysical
Consulting Services

Dipmeter Analysis
Tape Conversion Editing
Expert Petrophysical Analysis
Wellsite Supervision

816 Ferdinand Ct.
Bakersfield, California 93309

An early SJGS
foursome lines
up a putt



San Joaquin Geological Society

Annual Fall Classic Golf Scramble and Barbeque

Friday, September 12th, 2014

1. Golf Tournament at Sundale Golf Course

Breakfast and a BBQ Lunch courtesy of Halliburton Chuck Wagon

And Schlumberger BBQ'ing little Hoagies and Chicken sticks

2. Family BBQ and Prizes at the Kern County Museum

BBQ Dinner by: Drew Hutto is BBQ'ing

Onsite BBQ Featuring Tri Tip and all the Fixin's

Happy Hour at 5:00 PM

Dinner at 6:00 PM

Adults \$25.00

Students \$10.00

Children \$5.00

Please RSVP by Tuesday, September 10th (For BBQ) – Help the Planners
BBQ RSVP: John Abeid @ John.Abeid@chevron.com or online at <http://sanjoaquin-geologicalsociety.org/make-reservations/>

Golf Tournament

Sundale Golf Course

7:30 AM – Shotgun Start

\$95.00/ Person Includes:

Green Fee, Cart, Breakfast,
Lunch,

Drinks & Tee Prizes

**Golf Tournament Reserva-
tion Deadline:
SEPTEMBER 1, 2014**

**For more information, contact SJGS,
P.O. Box 1056, Bakersfield, CA 93302,
Attn: Kathy Smith
or
kathysmith@paseis.com**

Amanda Allen

Award: CGS – John Woolley Award

Academic Institution: Santa Barbara City College.

Degree being pursued: Associate degrees in Geological Sciences and Theatrical Costume Design.

Future Plans: pursue a Bachelor's degree in Geology beginning fall of 2015.



Brian Minkin

Award: CGS – Tom Bailey Award

Academic Institution: Santa Barbara City College.

Degree being pursued: Bachelor's degree

Future Plans: Applying to the University of Nevada, Reno and New Mexico Tech (with a focus on Economic Mineralogy).



Daniel Majcher

Award: CGS – John Woolley Award

Academic Institution: Moorpark College

Degree being pursued: Bachelor's degree in Geology (after Moorpark College).

Future Plans: Obtain Bachelor's and Master's degrees in Geology or geology related field.



Dyan Sagrado

Award: CGS – John Woolley Award

Academic Institution: Oxnard College

Degree being pursued: Associates degree in engineering, geology and mathematics.

Future Plans: To transfer to obtain a double major in geology and petroleum engineering.



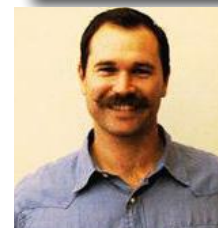
Drake House

Award: CGS – John Woolley Award

Academic Institution: Ventura College

Degree being pursued: Bachelor's degree

Future Plans: Fall 2014: attend Montana Tech of the University of Montana as a Sophomore in their Petroleum Engineering Program.



Troy Tittlemier

Award: CGS – Butch Brown Award

Academic Institution: Cal Lutheran University

Degree being pursued: Will graduate Spring 2014 with a Bachelor's of Science in Geology from California Lutheran University; will pursue Master's degree at Univ. Texas-Permian Basin and concurrently work as geologic technician.

Thesis/Dissertation Title: Kinematics and analysis of the Copper Basin Fault in Picacho State Recreational Area, California.



EarthQuest Technical Services, LLC

David R. Walter

drwalter@eqtservices.com
www.eqtservices.com

2201 'F' Street
Bakersfield, CA 93301
661•321•3136

RESERVOIR CHARACTERIZATION
GEOLOGY
PETROPHYSICS
DATABASE MANAGEMENT
DIGITIZING & SCANNING



DHISERVICES
Formation Evaluation Specialists

www.dhiservices.com

Les Collins

Regional Operations Manager

2202 Zeus Court
Bakersfield, CA 93308
Tel: +1 (661) 588-8310
Fax: +1 (661) 588-8322
Cell: +1 (661) 742-2720
Email: lcollins@dhiservices.com

Shawna Couplin

Award: PSAAPG / CGS – Gene Fritsche Award (Undergrad)

Academic Institution: California State University Northridge

Degree being pursued: Bachelor of Science

Thesis/Dissertation Title: Sourcing Sandstone Archaeological Artifacts from the California Borderlands.

Synopsis: Examine sandstone from three of the California Channel Islands (Santa Cruz, San Nicolas, and Santa Rosa islands) and the mainland Santa Monica Mountains to determine whether chemical and petrographic signatures for specific source locations can be determined. If so, archaeologists and geologists can analyze sandstone bowl artifacts recovered from southern California archaeological sites to determine the location of stone bowl manufacturing. The chemical and petrographic sourcing of sandstone raw material will aid archaeological interpretations related to the development of trade among island and mainland populations.

Future Plans: Obtain an M.S degree and pursue a career as a geologist focusing on sedimentary processes.



John Wiesenfeld

Award: PSAAPG / CGS – Gene Fritsche Award (Post-graduate)

Academic Institution: California State University Northridge

Degree being pursued: M.S in Geology

Thesis/Dissertation Title: The geochemical evolution of a convergent-margin magmatic arc root, Fiordland New Zealand.

Synopsis: Evaluating the dynamic relative contributions of the mantle and the crust to convergent-margin arc magmatism with respect to time in Fiordland, New Zealand, using geochemical isotopic analyses.

Future Plans: John plans to pursue a Ph.D in geology and continue a career in research.



Olivia Anderson

Award: PSAAPG / CGS Award (Undergrad)

Academic Institution: University of California, Santa Barbara

Degree being pursued: Bachelor's in Geology

Thesis/Dissertation Title: A Geochemical Approach to Unravelling the Mystery of Volcanic Ash within Mayan Pottery.

Synopsis: Mayan pottery shards of the Late Classic from Belize and Guatemala contain rhyolitic ash of unknown origin. The purpose of this study is to better comprehend the geochemical interactions that occur between volcanic ash and a clay matrix by firing rhyolitic ash in different clay matrices. Understanding the geochemical changes of the ash is key to finding the source of the ash since it would lend an insight into the original composition of the ash before firing.

Future plans: Olivia will attend Western Washington University to pursue a Master's degree and work with Dave Hirsch, a metamorphic petrologist, starting Fall 2014 with a TA position.



Elisabeth Steel

Award: PSAAPG / CGS Award (Post-Graduate)

Academic Institution: University of California, Santa Barbara

Degree being pursued: Ph.D

Thesis/Dissertation Title: Origin and depositional architecture of sand lobes on the shelf of the Northern Santa Barbara Channel.

Synopsis: determine the origin of six recently discovered fan-like features on the shelf of the Santa Barbara Channel (SBC) in Southern California. Each feature contains distinct lobes originating from massive up-dip features and may be composed of hybrid hyperpycnal-debris flow deposits. I am studying seismic surveys, cores, and grab samples from fans in the SBC to test two hypotheses: 1) Fans on the shelf of the SBC were deposited by hybrid sediment gravity flows, and 2) These flows could damage shelf infrastructure by remobilization of shelf sediment.

Future plans: In the near future, Elisabeth plans to complete a series of flume experiments to complement the Santa Barbara Channel study. After graduation she hopes to work in the oil industry.



2015 PSAAPG CONVENTION

The Pacific Section AAPG 2015 Convention will be in Ventura/Oxnard California, May 3-6, 2015, at the Embassy Suites- Mandalay Bay in Oxnard. Convention Chair Joan Barminski welcomes inquiries and involvement; her contact address is joan.barminski@boem.gov.

-Joan Barminski

ANNOUNCING A WORKSHOP SPONSORED BY THE NORTHERN CALIFORNIA GEOLOGICAL SOCIETY - A WORKSHOP FOR TEACHERS -

NCGS FIELD TRIP FOR NATIONAL EARTH SCIENCE WEEK Saturday October 25, 2014

“The Hayward Fault – Identifying Urban and Natural Features in the East Bay”

Leaders: Dr. Joyce R. Blueford, Math Science Nucleus,
Dr. Ray Sullivan, emeritus, San Francisco State University

COAST GEOLOGICAL SOCIETY DONATES MONEY TO CALIFORNIA OIL MUSEUM PROGRAMS

CGS donated \$1000 to the California Oil Museum's Student Oil Legacy Grants. This grant enabled 250 students to visit the Museum and receive one of our Earth Science Workshops. This year was a busy and successful one for the California Oil Museum. Over 4000 students were able to visit the Museum, thanks in part to CGS support.

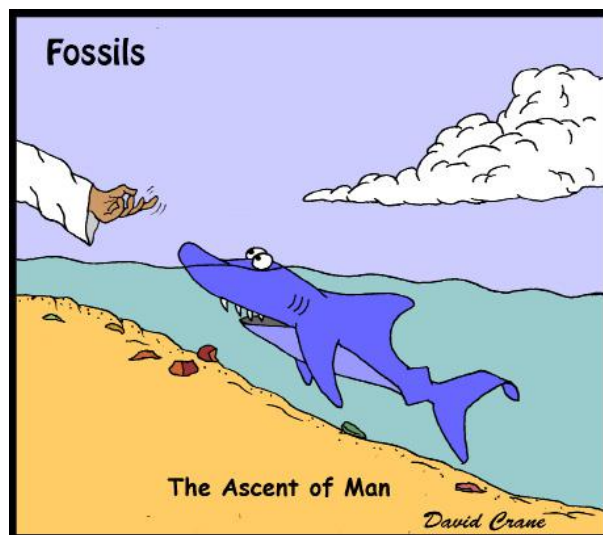
ANSWERS TO PRESIDENT'S MESSAGE QUESTIONS, page 8:

William Smith was first to recognize faunal succession in 1798; and he completed the first true geologic map of England, Scotland and Wales in 1815; his nickname was 'Strata' Smith.

Author: Simon Winchester, Title: 'The Map that Changed the World'

FOSSILS Cartoon

David Crane



GREGORY GEOLOGICAL SERVICES

Glenn J. Gregory

California Professional Geologist #3676

4800 Easton Drive, Suite 101
Bakersfield, CA 93309

(661) 633-5555
glenng@bak.rr.com



The Martin Van Couvering Award honors students selected to attend the PSAAPG Convention. The 2014 Van Couvering honorees who attended the Bakersfield convention are flanked by AAPG President Lee Krystinik, left.

PICTURED, left to right: Lee Krystinik, Daniel Tentori, Saint Joseph Thao, Brian Lee Clements, Janine Rosa, Jasmyn Nolasco, Diem Nguyen, Martin Jimenez, David Oliver, Alexandra Pytlak, Zach Martindale, Kelly Harrington, Alyssa Kaess, Chris Bowie

*Photo by
Stefano Mazzone*

Alaska Geological Society

- **SUMMER BREAK:** Meetings resume in September.

Coast Geological Society

- **July, August:** SUMMER BREAK
- **September 16 Meeting:** Topic, Speaker To Be Announced

L.A. Basin Geological Society

- **June 26 Meeting:** To Be Announced

Northern California Geological Society

- **June 25 Meeting:** "Meteorites;" **SPEAKER:** Jason Utas, PhD candidate, UCLA.
- **July, August:** SUMMER BREAK
- **September 24 Meeting:** "Catastrophic Earthquakes in a Crowded World;" **SPEAKER:** Dr. Thomas Holzer, USGS
- **October 29 Meeting:** "The West Without Water;" **SPEAKER:** B. Lynn Ingram, UC Berkeley

Northwest Energy Association

- **September Meeting:** "Alaska North Slope Production, Exploration, and Future Crude Oil Supplies to West Coast Refineries;" **SPEAKER:** Dave Hite.
- **October Meeting:** "Oil and Gas Infrastructure Preparedness for a Major Cascadia Earthquake;" **SPEAKER:** Bruce Pasket.

Sacramento Petroleum Association

- **September Meeting:** To Be Announced

San Joaquin Geological Society

- **July, August:** SUMMER BREAK
- **September 12 "ANNUAL GOLF/BBQ EVENT;"**

Alaska Geological Society

www.alaskageology.org

P. O. Box 101288
Anchorage, AK 99510Contact: Eric Cannon
eric_cannon@golder.com

Luncheon meetings are held monthly September through May, usually on the third Thursday of the month, at the BP Energy Center (1014 Energy Court) from 11:30 a.m. to 1:00 p.m. The hot lunch cost is \$20 for members with reservations; \$22 for non-members with reservations; and \$25 without reservations. The box lunch cost is \$13 for members with reservations, \$15 for non-members with reservations, and \$18 without reservations. For reservations, call the AGS reservation voice mail at 907-258-9059 or contact David Hite at hiteconsult@acsalaska.net by noon on Monday before the meeting.

President: Matt Frankforter
President-Elect: Keith Torrance
Vice-President: Monty Mabry
Secretary: Eric Cannon
Treasurer: Alan Hunter
Past-President: Ken Helmold

mfrankforter@hilcorp.com
ktorrance at apcservicesllc.com
monte.mabry@bp.com
eric_cannon@golder.com
paleoman@mac.com
ken.helmold@alaska.gov

Coast Geological Society

www.coastgeologicalsociety.org

P. O. Box 3055
Ventura, CA 93006Contact: Peter Morris
805.745.2149

Dinner meetings are held monthly September through May, on the third Tuesday of the month, at Poinsettia Pavilion, 3451 Foothill Road in Ventura. Social hour starts at 6:00 p.m., dinner is served at 7:00 p.m., and the talk starts at 8:00 p.m. The cost of dinner with reservations is \$20 (members), \$25 (non-members), or \$10 (students and K-12 teachers); the talk is free. For reservations, please email Bonnie Walters (secretary@coastgeologicalsociety.org), and should be made by 4:00 p.m. on the Friday before the meeting.

President: Peter Morris 805-745-2149
Past President: John Harris 805-407-7644
Vice President: Bob Blackmur 805-535-2025
Secretary: Bonnie Walters 805-933-0076 Ext 292
Treasurer: Christine White 805-535-2074
Membership: Nick Kunstek
Webmaster: Whit Skaling

president@coastgeologicalsociety.org
pastpresident@coastgeologicalsociety.org
vicepresident@coastgeologicalsociety.org
secretary@coastgeologicalsociety.org
treasurer@coastgeologicalsociety.org
membership@coastgeologicalsociety.org
webmaster@coastgeologicalsociety.org

Los Angeles Basin Geological Society

www.labgs.org

Contact: Jean Kulla
949-500-3095

Luncheon meetings are held monthly September and October; and January through June, usually on the fourth Thursday of the month, at The Grand at Willow Street Conference Centre (4101 E. Willow Street) in Long Beach. Lunch is served at 11:30 a.m., and the talk starts at 12:15 p.m. The cost is \$25 (with reservations), \$30 (without reservations), \$20 for retired members, and \$5 for students. Reservations can be made online at www.labgs.org or by contacting Graham Wilson at 562-326-5278 or GWilson@SHPI.net. Reservations must be made prior to Tuesday before the meeting.

President: Jean B. Kulla 949-500-3095
Vice President: Katherine Kovac 801-574-9927
Treasurer: Bert Vogler 562.432.1696
Secretary: Graham Wilson 562.326.5278
Scholarships: Karla Tucker 714.658.0474

k2mobile@MSN.com
katherine_kovac@oxy.com
hvogler@kleinfelder.com
Gwilson@SHPI.net
ktrk2@aol.com

Northern California Geological Society

www.ncgeolsoc.org

9 Bramblewood Court
Danville, CA 94506-1130Contact: Barb Matz
Barbara.Matz@shawgrp.com

Evening meetings are held monthly September through May, usually on the last Wednesday of the month, at the Masonic Center (9 Altarinda Road) in Orinda. Social hour starts at 6:30 p.m., and the talk starts at 7:00 p.m. (no dinner). For reservations, contact Dan Day at danday94@pacbell.net before the meeting. Cost is \$5 per regular member; \$1 per student member; and \$1 per K-12 teachers.

Continued on next page

NCGS Officers:

President:	Phil Reed	philecreed@yahoo.com
President-elect:	Will Schweller	willschweller@yahoo.com
Program Chair:	John Karachewski	cageo@sbcglobal.net
Secretary	Dan Day	danday94@pacbell.net
Treasurer	Phil Reed	philecreed@yahoo.com
Membership Chair	Rob Nelson	rlngeology@sbcglobal.net
Newsletter Editor	Mark Detterman	mdetter1@gmail.com
Field Trip Coordinator	Tridib Guha	tridibguha@yahoo.com
Past President	Tom Barry	tomasbarry@aol.com
Scholarships	Phil Garbutt	plgarbutt@comcast.net

Northwest Energy Association

P. O. Box 6679

Portland, OR 97228-6679

Contact:

Jim Jackson or John Armentrout



Breakfast meetings are held monthly September through May, usually on the second Friday of the month, at the Multnomah Athletic Club (1849 SW. Salmon Street) in Portland. Meeting time is at 7:30 - 9:00 am. The cost is \$18. For information or reservations, contact Jim Jackson.

President	John Armentrout	jarmenrock@gmail.com
Vice-President	Bill Rodgers	WLRODGERS@stoel.com
Past President	Jim Jackson	jackson.js@comcast.net
Treasurer	Barb Portwood	bbportwood@gmail.com
Secretary	Laird Thompson	lbtfacs@wildblue.net
House of Delegates:	John Armentrout, Anne Fix	

Sacramento Petroleum Association

P. O. Box 571

Sacramento, CA 95812-0571

Contact: David Hartley

530.304.4277



Luncheon meetings held monthly January through November, on the third Wednesday of the month. Location: Club Pheasant Restaurant in West Sacramento. The meetings starts at noon. The cost is \$16 - \$20. For information or reservations, contact Pam Ceccarelli.

President:	Jerry Reedy	916.486.2643	JWR5532@aol.com
Vice-President:	David Hartley	530.304.4277	drilmax1@aol.com
Secretary	Derek Jones	916.859.4710	djones@gasbiz.com
Editor/Treasurer	Pam Ceccarelli	916.439.0400	pc626@comcast.net

San Joaquin Geological Society

www.sanjoaquingeologicalsociety.org

P. O. Box 1056

Bakersfield, CA 93302

Contact: Laura Bazeley

lbazeley@wziinc.com



We have dinner meetings on the second Tuesday of the month at the American Legion Hall at 2020 "H Street" in Bakersfield. There is an icebreaker at 6:00 pm, dinner at 7:00 pm, and a talk at 8:00 pm. Dinner is \$25.00 for members with reservations and \$30.00 for nonmembers and members without reservations, and the talks are free. **(Incoming 2014-2015 officers listed below)**

President:	Anne Draucker	661.428.0350	AnneDraucker@chevron.com
Past President:	Laura Bazeley	661.326.1112	lbazeley@wziinc.com
President-Elect:	Ariel Auffant	661.654.7005	aauffant@chevron.com
Vice-President:	Greg Gordon	661.665.5518	gsgordon@aeraenergy.com
Secretary:	John Abeid	661.654.7252	John.Abeid@chevron.com
Treasurer:	Corine Armstrong	661.654.7858	Corine.Armstrong@chevron.com

Making Unconventional, **Conventional**



PetroFecta® from **Fluid Inclusion Technologies**

*is a unique approach combining
XRF (**PDQ-XRF®**), Trapped Fluid Analysis
(**FIS®**), and High Resolution Photography
(**RockEye®**) of the entire wellbore from well
cuttings or core samples of any age.*

*All analyses are conducted on the same
1 gram sample (up to 575 samples per well)
with an analytical cycle of four days.*

*Data provided on a DVD with
previewer software.*



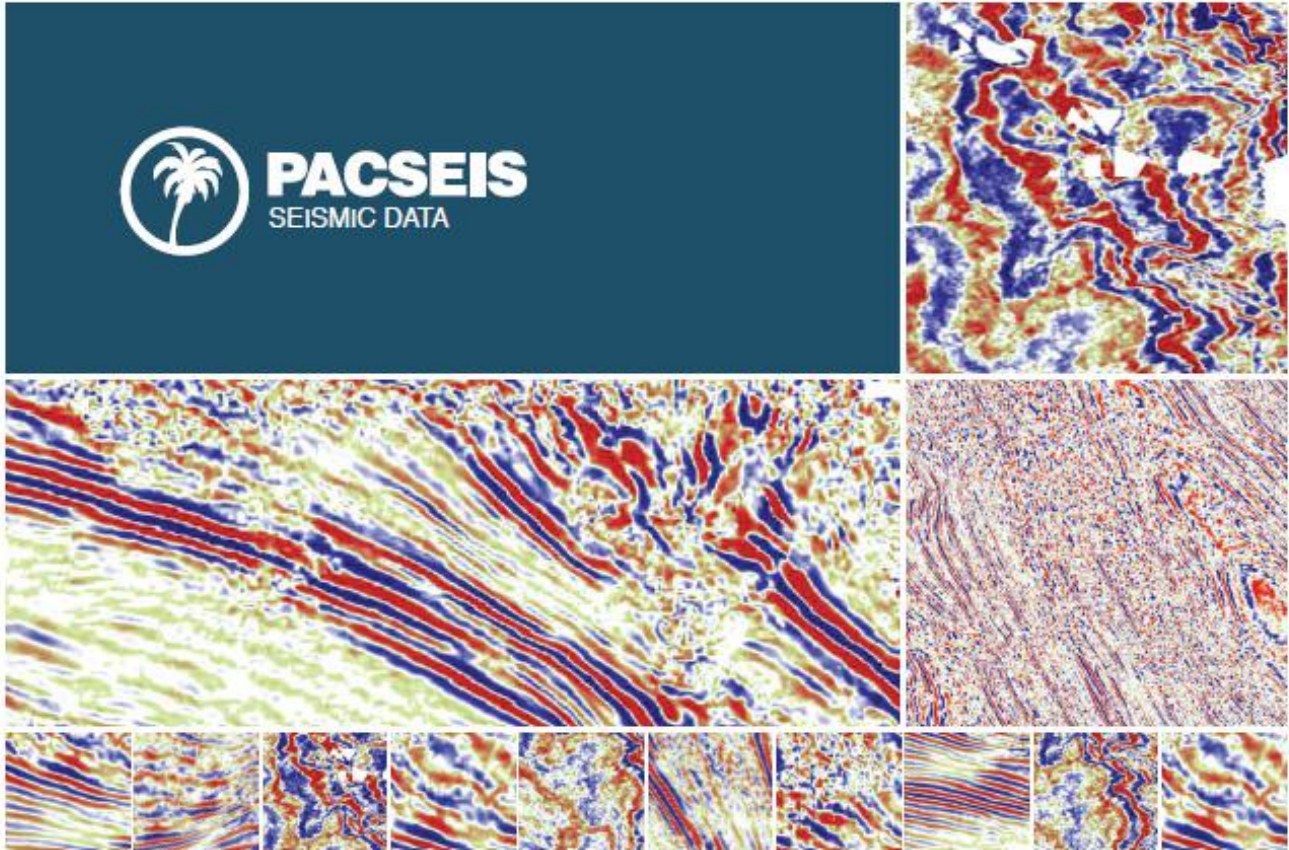
Innovations in Petroleum Risk Management

Information about **PetroFecta®** and other FIT services, call **918.461.8984** or visit **www.fittulsa.com**



PACIFIC SECTION AAPG
P. O. Box 1072
BAKERSFIELD, CA 93302

PRESORTED
STANDARD
U.S. POSTAGE PAID
BAKERSFIELD, CA
PERMIT NO. 1163



PACIFIC SEISMIC COMPANY

The leader in subsurface information

RESOURCES THAT DELIVER THE DIFFERENCE

- One of the largest seismic databases available for license
- Seismic available for immediate license
Over 500,000 line miles of 2D data located in domestic United States (onshore & offshore)
- 2,500 square miles of 3D surveys

RECENTLY ACQUIRED SEISMIC DATABASES BY PACIFIC SEISMIC CO.

- Chevron USA California, OXY USA Nationwide (including Arco & Enron)
- Santa Fe energy, TXO, Cities Service Oil & Gas Nationwide
- Southern Pacific, PG&E/ NGC, SOHIO

PACIFIC SEISMIC COMPANY | Your Full-Service Seismic Brokerage & Acquisition Company

EXPLORATION CONSULTING

PROSPECT FINANCING

PROJECT DEVELOPMENT

Tel (661) 322-1171 | Fax (661) 322-1181 • www.pacseis.com | Bakersfield | Houston | Denver