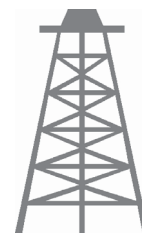




Pacific Petroleum Geology



NEWSLETTER

Pacific Section • American Association of Petroleum Geologists

May & June 2014

2014 PSAAPG CONVENTION Post-Convention Issue





When time is money, Wellsite Geoscience is money well spent.

Whether you're exploring a basin, producing a well or completing a shale play, time is money. That's why Weatherford Laboratories brings a suite of formation evaluation technologies right to the wellsite. Utilizing mud gas and cuttings, these technologies provide detailed data on gas composition, organic richness, mineralogy and chemostratigraphy in near real time. As a result, operators now have an invaluable tool to assist with sweet spot identification, wellbore positioning, completion design and hydraulic fracturing. We call it Science At the Wellsite. You'll call it money well spent.

SCIENCE AT THE WELLSITE™

www.weatherfordlabs.com

Formation Evaluation | Well Construction | Completion | Production

©2013 Weatherford. All rights reserved



2013-2014 OFFICERS

President Dan Schwartz
661.665.5832
dschwartz@aeraenergy.com
president@psaapg.org

President-Elect John Williams
805-231-3793
jtw@petrolog-geological.com
president-elect@psaapg.org

Vice President Jennifer Anderson
661.363.3226
jennifer_anderson@oxy.com
vicepresident@psaapg.org

Secretary Jana McIntyre
661.869.8231
secretary@psaapg.org

Treasurer 2012-2014 Jack Grippi
661.665.5061
jGrippi@aeraenergy.com
treasurer@psaapg.org

Treasurer 2013-2015 Cameron Campbell
661.654.7429
cameron.campbell@chevron.com
treasurer@psaapg.org

Past President Tony Reid
661.412.5467
tony_reid@oxy.com
president@psaapg.org

Editor-in-Chief 2012-2014 Tim Elam
661.378.6790
kyrocks@peoplepc.com
editor@psaapg.org

STAFF

Web Master Jason Minch
661.412.5206
Jason_Minch@oxy.com
webmaster@psaapg.org

Membership Chair Plamen Ganev
661.665.5459
pnganev@aeraenergy.com

Publications Chair Larry Knauer
661.392.2471
LarryKnauer@chevron.com

Advisory Council Representative 2012-2014 Jon Schwalbach
805.648.8518
JRSchwalbach@aeraenergy.com

4 President's Message • Dan Schwartz

5-6 In Memoriam: Guy Burge, Ridge Dorsey, and Rocky Reifensstuhl

6 Editors Corner • Tim Elam

7-10 Candidates for PSAAPG Election • Tony Reid

11-22 2014 PSAAPG CONVENTION

- Sponsors
- All Convention/Honors & Awards Luncheon
- Candid Photo Mosaic
- Field Trip Photos
- Student/Young Professional Events

24 Kern H.S. District/CSUB Dual Credit Geology Partnership • Dirk Baron

25-26 Southern California Geology Adventure • Jean B. Kulla

27-31 PSAAPG Member Society News

28 FOSSILS Cartoon • David Crane

ON THE COVER: Variegated sediments of the "mini Grand Canyon" of Sespe Formation outcrops on South Mountain oilfield in the Ventura Basin. *Photo by Stefano Mazzoni*

CORRECTION: The Editor inserted an incorrect statement in Frank Cressy's "In Memoriam" notice in the March/April PPG Newsletter. It stated that Henry Walrond was a past President of SJGS. He was never President, but was Treasurer in 1975-1976.

- CONTACT THE EDITOR at editor@PSAAPG.org or kyrocks@peoplepc.com.
- Images (graphics, photos, and scans) must be at least 300 dpi resolution. Text should be at least 600 dpi.
- Scanned photos, illustrations (line art) or logos should preferably be submitted as a .tif, .gif, or .bmp; .jpeg is OK.

Advertising Rates

Members	Single Issue	Year(6issues)
Full Page	\$400.00	\$1600.00
Half Page	\$250.00	\$1050.00
Quarter Page	\$150.00	\$650.00
Business Card		\$250.00

Societies Free Advertising:

Convention: Unlimited Space in PSAAPG Newsletter
Societies: 1/4 Page in AAPG Explorer

Dear PSAAPG Members,

The Bakersfield convention is in the books. It was a great event, exhausting, but really memorable. We should thank a fantastic team: the Convention Committee, for all their efforts, and to the San Joaquin Geological Society for hosting this event. They pulled off a safe, educational, fun, tasty, and dynamic event. Registration reached 652, including about 100 students. The Bakersfield Marriott at the Convention Center did a very good job. The field trips, workshops and short courses were very well presented and attended. The technical sessions were outstanding, with a solid mix of student and professional presenters. The exhibition hall was truly a fully utilized and well attended venue, where the food was excellent (crab, shrimp, oysters and more). The continuous flow of people between sessions and for the posters ensured that the exhibitors had great traffic. The comments from the crowd were very positive.



The visitors from AAPG National were also very impressed with the show. Lee Krystinik (AAPG President), Tom Ewing (VP of Sections), David Dolph (Head of the House of Delegates), and Carol McGowen (Manager of US Sections and International Regions Development) joined for the bulk of the meeting. Lee's talk at the All Convention Luncheon was outstanding. David hosted a House of Delegates meeting, and Tom participated in Technical Sessions. Carol had the AAPG booth at the Exhibition Center. Tom and Carol also joined us for our second annual PS-AAPG Leader Forum, where the Executive Committee presented our views for the issues faced by the Society and how we propose to address them. Thanks to all the folks who attended this public meeting.

I want to provide special recognition to our 2014 Honors and Award Winners for PS-AAPG. As he has done for several years, Bob Lindblom leads the Honors and Awards Committee. He is responsible for assembling a list of potential award winners to be presented to the Ex Comm. We approved the list and the awards were presented at the All Convention Luncheon. The Honorary Life Member awards were presented to Robert D. Hoffman and Stephen A. (Tony) Reid. Distinguished Service awards were given to Bonnie Bloeser, Timothy D. Elam, and Cynthia A. Huggins. The Distinguished Educator award was presented to Janice M. Gillespie, PhD. In addition to these awards, the Teacher of the Year Award was presented to Stephen Kiouses of Bakersfield. Stephen will represent PS-AAPG at the National level. The Van Couvering award students were presented by Mark Wilson of the PS-AAPG Foundation. Students from Bakersfield and Fresno were honored at the meeting. Finally, the PS-AAPG winning IBA team from San Diego State University was presented with an award at the Luncheon and provided with registration for the meeting.

We are looking forward to the 2015 Convention in Oxnard, hosted by the Coast Geological Society. The meeting is May 3-6, 2015 at the Mandalay Beach Hotel and Resort Embassy Suites, and Joan Barminski is the General Chair. I know she was taking a lot of notes in Bakersfield.

As we move into summer, there are two things I am looking forward to doing. Firstly, the election for PS-AAPG officers will be taking place very soon. The list is assembled and will be sent out in May. Secondly, I am looking forward to handing off the Presidential Mace to John Williams. We have been getting together over the past year, and have been participating in monthly telephone conferences with Presidents from all the AAPG Sections. John and I will be getting together with the Executive Committee in June and will have the hand-over in early August.

Best Regards,

Dan

Guy L. Burge

Long time PSAAPG member Guy L. Burge passed away on March 31, 2014, in Incline Village, Nevada. He is survived by his wife of more than 50 years, Linda, son Mark, and daughters Kathleen and Suzanne.

Guy was born June 24, 1938. He graduated from the University of Redlands in 1960. He was California Professional Geophysicist Geologist #8, and California Registered Geologist # 2706. He was a past officer of the San Joaquin Geological Society, having served as Treasurer in 1978-79.

Guy was a well known Sacramento Valley/San Joaquin Valley geologist. He worked for Union Oil Co., Buttes Resources, Capitol Oil Corp., and Stream Energy. In later years, he had his own consulting business, Geoen-ergy, based in Reno, Nevada. He supported multiple educational efforts in the Reno/Lake Tahoe area, including the Lake Tahoe School.

Thanks to Rich Boyd and the Sacramento Petroleum Association for contributions to the article



Guy Burge- From SPA

Ridge Dorsey

Ridgely was born in Syracuse New York, on Oct 25, 1931. After high school, he studied at Syracuse University until his Naval Reserve Unit was called up for the Korean War. He spent the next two years in the Southeastern U.S. eventually landing on a marine training vessel called an LST, a "Large Slow Target" as he used to call it. After his run with the Navy, the GI Bill allowed Ridge to attend and graduate from the University of Washington with a Bachelor of Science in Geology, where met "the love of his life" Sylvia.

After a summer working in the oil fields they moved to Los Angeles so "Ridge," could go to UCLA, where he received a Masters Degree in Geology. While attending UCLA they lived on Sepulveda Boulevard just as the 405 Freeway was being constructed. He would tell stories of how they would be woken up on weekday mornings by the apartment shaking as trucks from Sepulveda Pass rumbled by, full of dirt, causing a thick layer of dust to form on everything if a window was left open during the day. He did his Master's Thesis on the Owens River Valley and this when his love of the Sierra Mountain Range began.

After early assignments with Shell Oil in Bakersfield and Ventura, Ridge joined Tenneco in Bakersfield in the late 1960's and remained in Bakersfield the rest of his life. He later worked for SSI, STA, Combs and Assoc., Bechtel at Elk Hills until retiring in 1998, and fully retiring in 2000. He also had a consulting business. Ridge and Sylvia lived in the same house in Bakersfield for 44 years. Ridge was a long time member the of San Joaquin Geological Society, and was an unforgettably colorful character and a genuinely nice person.

Once retired he spent time passing on his vast knowledge of geology at the Buena Vista Museum of Natural History and the Bakersfield Museum of Art. At each of these places, he entertained folks with his "Ridgeisms" such as "Great Piles of Schistosity!", "Flinkinger Anticline!", "Think Like a Sand Grain", "Arthur (speaking of Arthritis) and his whole family have moved in..." and many others.

Ridge leaves behind his wife Sylvia, and two sons Edward and John, and their families.

This article contains information from an obituary written by Ridge's longtime friend Malcolm Allen and an obituary in The Bakersfield Californian.



ABOVE: Ridge doing fossil restoration at Buena Vista Museum of Natural History. He was an excellent restorer, and paid great attention to the often tedious work of removing matrix from teeth, bones and other fossil material. But for Ridge, there was always a "thrill to the hunt" to find what was behind the next clump of silt. His favorite finds included the tiniest of shark teeth. He always had a smile and a joke...a "Ridgeism" to share.

-The Editor

Rocky Reifenstuhl

Rocky Robert Reifenstuhl, longtime field geologist and legend in the annals of extreme racing in Alaska, died in Salt Lake City on 31 January 2014 at the age 61 while awaiting a heart transplant. Rocky was a field geologist with the Alaska Division of Geological & Geophysical Surveys (DGGs) for 27 years before his retirement in 2009.



Rocky grew up in rural New York State and graduated from West Virginia University in 1976 with a BA in Geology. After auditing a few graduate courses at Cornell, he was lured to Alaska by a spirit of adventure and the fact that his older brother, Steve, had also moved there. In 1977, while working for the U.S. Forest Service in Ketchikan, Rocky met Gail Koepf, beginning a lifelong relationship and marriage. Rocky and Gail had two daughters, Alexis and Kirsten, who both live with their families in Oregon.

Throughout his career, Rocky published his maps and stratigraphic and petrographic studies through DGGs. The productivity reflected by his publications record is impressive by any standard. Rocky is senior author on 10 geologic maps and a contributing author to an additional 38 maps. He is the lead author for 29 reports and technical papers and a co-author on an additional 27. Rocky presented more than 32 technical presentations at Geological Society of America (GSA), American Association of Petroleum Geologists (AAPG), Alaska Geological Society (AGS), and other meetings and coauthored more than 31 additional presentations. His professional affiliations included GSA, AAPG, and AGS. He also served as president and board member of AGS and was an adjunct professor at UAF. Rocky's persona as an iron man in the field was in sharp contrast to his image at society meetings and special occasions, where he was the epitome of an articulate, professional geologist.

EDITOR'S NOTE: This "In Memoriam" is only a small part of a tribute to Rocky Reifenstuhl, taken from the Alaska Geological Society Newsletter, April 14, 2014 issue.

EDITORS CORNER

Okay, who hasn't been busy this Spring? Raise your hand? Anyone? Everybody's been busy? I thought so.

This issue was intended to provide complete PSAAPG Convention coverage. It doesn't. I stuffed as much stuff as I could into this 32 page full-color edition, but I couldn't fit everything that was submitted. That's a pleasant crisis. Please be aware that in the July-August issue, there will be photos of all Convention vendors, all Convention field trips not covered in this issue, all PSAAPG scholarship winners not in this issue, programs at the California Oil Museum, a San Joaquin Valley oil field article (the field is secret for now) by Scott Hector, and more.



I am thankful to have non-Convention articles from Jean Kulla, Dirk Baron, and John Armentrout in this issue, plus PSAAPG election candidate information supplied by Tony Reid. Thanks to all folks who submitted photos, particularly Stefano Mazzoni and Noel Velasco who provided more than 50 Convention photos each.

Congratulations to the Imperial Barrel Award winning team from San Diego State University at the PSAAPG competition. The event, held March 21 at AERA in Bakersfield, was excellent again this year. California State Univ.- Bakersfield, Long Beach State, University of Alaska-Fairbanks, and University of California, Santa Barbara were also well-represented by their IBA teams.

Van Couvering Award winners (see picture page 15):

- From CSU Bakersfield: Kelly Harrington, Martin Jiminez, Alyssa Kaess, Zachary Martindale, Diem Nguyen, Janine Rosa
- From Fresno State: Christopher Bowie, David Oliver, Alex Pytlak, Saint Joseph Thao
- From CSU Northridge: Brian Lee Clements, Jasmine Nolasco, Daniel Tentori

-Tim Elam

President-elect

Kurt Neher



Education

B.A. Geology, Carleton College
M.S. Geology, University of South Carolina

Employment

Occidental Oil & Gas Corp., California Geoscience Director, 2008 – present
Occidental of Elk Hills, Inc., Geoscience Manager, 2006 – 2008
Occidental Exploration & Production Co., Ecuador, Vice President Exploration, 2004 – 2006
Occidental Oil & Gas Corp., Chief Geologist, Worldwide Exploration, 2003 – 2004
Occidental Oil & Gas Corp., International Exploration Manager, 2000 – 2003
Occidental Oil & Gas Corp., California Exploration Manager, 1999 – 2000
Occidental Oil & Gas Corp., New Ventures Geologist, Southeast Asia, 1994 – 1999
Shell Offshore Inc., Area Exploration Manager, Deepwater Division, 1993 – 1994
Shell Offshore Inc., Exploration Geologist, Deepwater Division, 1990 – 1993
Shell Pecten International Co., Exploration Geologist, Subandean New Ventures, 1986 – 1990

Prior Service

San Joaquin Geological Society, President, 2009 – 2010
AAPG Advisory Council, Pacific Section Representative, 2009 – 2012
AAPG Annual Convention (Long Beach), Technical Co-Chair, 2012

Michael Nelson



Education

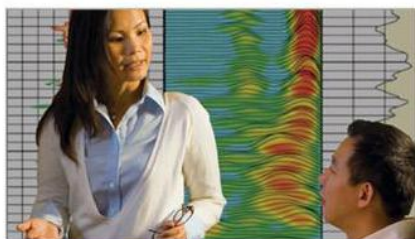
B.S. Geology, University of Minnesota, Duluth
M.S. Geology, Oregon State University

Employment

DCOR LLC, Geoscience Manager, 2012 – present
DCOR LLC, Senior Geologist, 2006 – 2012
California Oil Museum, Executive Director, 1993 – 2006
Unocal Corp, Advisor Geologist, 1989 – 1993
Unocal Corp, Area Geologist, 1986 – 1989
Unocal, Development Geologist, 1982 – 1986
Unocal, Exploration Geologist, 1977 – 1982

Prior Service

National AAPG Convention, Long Beach, Field Trip Coordinator, Geology & Oil Seeps of the Santa Barbara Channel, 2012
Pacific Section AAPG Convention, Sponsorships Co-Chair, 2009
Coast Geological Society, President, 2009
Coast Geological Society, Vice President, 2008



Wireline Systems

Sales: 661.336.3100

Operations: 661.765.2020

www.bakerhughes.com | Advancing Reservoir Performance

Vice President

Jonathan Allen



Education

B.A. Geology-Biology, Colby College, Waterville, Maine
M.Sc. Geology, University of Nebraska-Lincoln, Lincoln, Nebraska
Ph.D. Geology, University of Nebraska-Lincoln, Lincoln, Nebraska

Employment

Chevron, Geologist, Bakersfield, California, 2009 – present

Prior and Current Service

AAPG Membership Young Professionals Committee, 2009 – present; Vice-Chair, 2013-2014; Chair, 2014 - present
AAPG Research Committee, 2009 – present
Pacific Section of AAPG Young Professionals Ad-Hoc Committee, Chair, 2010 – 2014
San Joaquin Geological Society, Vice President, 2013-present
San Joaquin Geological Society, Young Professionals Coordinator, 2010 – 2014
Technical Program Organizing Committee; SEPM Representative, PSAAPG Annual Meeting, Bakersfield, California, 2014
Session Chair, PSAAPG Annual Meeting, Monterey, California, 2013
Technical Program Organizing Committee; Oral Sessions Representative, AAPG Annual Conference & Exhibition (ACE), Long Beach, California, 2012
Session Chair, AAPG Annual Conference & Exhibition (ACE), Long Beach, California, 2012
Field Trip Leader, AAPG Annual Conference & Exhibition (ACE), Long Beach, California, 2012
Nebraska Student Chapter of AAPG, University of Nebraska-Lincoln, Vice President, Lincoln, Nebraska, 2007-2008

Marck Maroun



Education

B. S. Geology, San Diego State University
M.S. Geology, San Diego State University

Employment

Aera Energy LLC, Geologist, Bakersfield, 2012

Prior and Current Service

Assistant, Pacific Section IBA Competitions and Student Leadership Summits, 2012 – present
President, Student Chapter, San Diego State University, 2011
Imperial Barrel Award Team Member, San Diego State University, Pacific Section Winning Team, 2011

PAYZONE INC.
Geological, Geophysical, and Petrophysical Consulting Services for the Petroleum Industry 661-387-1715

<ul style="list-style-type: none"> • Training in advanced log analysis focused on California • Accurate, consistent fieldwide reservoir properties for modeling 	<ul style="list-style-type: none"> • Old E-Log Interpretation • Rock properties from sand/diatomite/shale sequences • Log data management/digital log database cleanup • 2D/3D seismic interpretation, specializing in old 2D data
---	--

Our petrophysical models for diatomite and California sands are based on over 30 years of experience with these rocks, including core, log, and lithology data from every basin in the state

<p><i>Deborah Olson, President</i> dmolson@payzoneinc.com 661-747-0375</p>	<p>Now Offering Image Log Interpretation Services! www.payzoneinc.com</p>	<p><i>Tom Howard, Image Analyst</i> tomh@payzoneinc.com 832-407-2862</p>
--	---	--

Secretary

Malcolm Allan



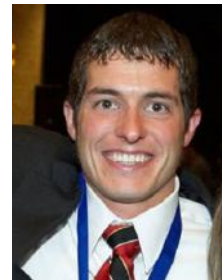
Education

B.Sc. Geology, Imperial College, University of London
M.Sc. Petroleum Geology, Imperial College, University of London

Employment

Aera Energy LLC, Bakersfield, 1998 – present
Bechtel Petroleum Operations, Inc., Elk Hills, 1998
SSI, Elk Hills, 1989 – 1998
Occidental International E&P, Bakersfield
Texaco in Houston, West Africa and London

Shane Peterson



Education

B.S. Geology, University of Wisconsin Eau Claire
A.S. GIS, University of Wisconsin Eau Claire
M.S. Geology, San Diego State University

Employment

Chevron E&P, Bakersfield, Geologist, 2012 – present
San Diego State University, Teaching Associate, 2010 – 2012

Prior Service

PSAAPG Convention Committee - Oral Session Chair, 2014

Treasurer-elect

Lisa A. Alpert



Education

B. S. Geology, CSU Los Angeles
M. S. Geology, CSU Los Angeles
Ph. D. Geophysics, USC

Employment

Aera Energy LLC, Bakersfield, Exploration Geophysicist, 2014
Aera Energy LLC, Bakersfield, Geologist, 2012
Bookkeeper, various employers, Los Angeles area, 1995 – 2007

Rebecca Greenberg DeMarais



Education

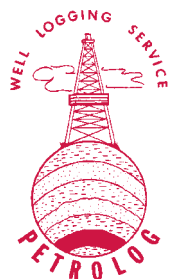
B. S. Geology, UCLA
M.S. Geology, CSU, Northridge

Employment

Occidental of Elk Hills, Inc., Geologist, 2013 – present
Oxy Long Beach, Geologist, 2010 – 2013

Prior and Current Service

Pacific Section AWG Board of Directors, Alternate Delegate
Project Lead the Way, Frontier High School, Advisory Council Member
Los Angeles chapter AWG, Founding Member



PETROLOG

PETROLOG, INC.
JOHN T. WILLIAMS
Geologist, P.G. #5899, President

Geological Well Logging

P.O. BOX 7028
VENTURA, CA 93006
jtw@petrolog-geological.com

(805) 642-2847 • Fax(805) 980-5569 • Cell(805) 231-3793

GREGORY GEOLOGICAL SERVICES

Glenn J. Gregory

California Professional Geologist #3676

4800 Easton Drive, Suite 101
Bakersfield, CA 93309

(661) 633-5555
glenng@bak.rr.com

Editor-in-chief

Sarah Hebeler



Education

B.S. Geology, San Diego State University
M.S. Geology, San Diego State University

Employment

Chevron, Development Geologist 2008-Present

Prior and Current Service

AAPG Imperial Barrel Award Participant, San Diego State University, 2008

Vaughn Thompson



Education

B.S. Geology, Nelson Mandela Metropolitan University
M.S. Geology, University of Utah

Employment

Occidental of Elk Hills, Inc., Bakersfield, Geologist, 2011 – present
Occidental Oil and Gas Corp., Bakersfield, Exploration Geologist, 2010 – 2011
Energy and Geoscience Institute, Salt Lake City, Geologist, 2006 – 2010
Petroleum Agency of South Africa, Geologist, 2003 – 2006

Prior and Current Service

Past President, San Joaquin Geological Society
President and Vice President, San Joaquin Geological Society, 2012-2013
AAPG Africa and Rocky Mountain Representative AAPG, 2008 to 2010
President, VP, Treasurer and secretary AAPG Student Chapter, University of Utah, 2006 – 2010

Special Core Analysis In Bakersfield



Core Lab
RESERVOIR OPTIMIZATION

Laboratory Services Include:

- Capillary Pressure • Relative Permeability • Formation Damage Studies • Electrical Analyses • Environmental Studies

Core Laboratories, Inc • 3437 Landco Drive • Bakersfield, CA 93308
Tel: (661) 325-5657 • Fax: (661) 325-5808



PSAAPG

2014 PSAAPG - PSSEPM - PCSSEG Joint Annual Meeting A Century of Innovation - From Exploration to EOR

April 27-30, 2014

Thank you to the following companies for their generous contributions and support!



PSAAPG

Platinum Sponsors



Occidental Petroleum Corporation

Gold Sponsors



Silver Sponsors



Bronze Sponsors



Moham Natural Gas

Patron Sponsors



Paul D. Hacker
Consulting Geologist CSEG-AASG

Rancho Energy Consultants, Inc.



Gregory Geological Services



Petroleum Geophysicists, Inc.



Stockdale Energy Co.

Resolute Petroleum, LLC



SR2020 Inc.
See Your Reservoir in 3D™

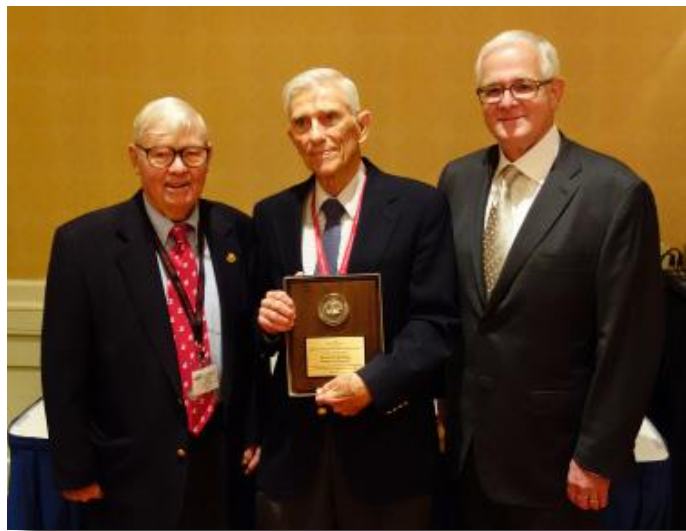


Honorary Membership

Honorary Life Membership is the highest award given to PSAAPG members. It is bestowed upon members who have distinguished themselves by their contributions and devotion to the science and profession of petroleum geology and by their outstanding service to the Pacific Section. In 2014, two members were chosen for this award: Bob Hoffman and Tony Reid. They were presented their awards by Honors and Awards Committee Chair Bob Lindblom and PSAAPG President Dan Schwartz.



Tony Reid receives the Honorary Membership Award from Bob Lindblom, left, and Dan Schwartz, right.



Bob Hoffman receives the Honorary Membership Award from Bob Lindblom, left, and Dan Schwartz, right.

*Photos by
Stefano
Mazzoni*



#1026

Memoir 104

Oil and Gas Fields of the Cook Inlet Basin, Alaska

AAPG Member Price: \$79 • List Price: \$159
(plus shipping/handling)

Buy. Register. Download.

International shipping via courier method only.



AAPG

Publications

Earth Science Teacher of the Year Award



The Earth Science Teacher of the Year Award for 2013-2014 is presented to Stephen Kiouses, instructor at Ridgeview H.S., Bakersfield, Ca. Steve is flanked by Bob Lindblom, left, and Dan Schwartz, right.

H. Victor Church Memorial Award



The H. Victor Church Memorial Award is given in recognition of the best poster presented at the PSAAPG annual meeting. Honored for his 2013 paper is Brian Gray, Lettis Consultants, Intl. Brian is flanked by Bob Lindblom, left, and Dan Schwartz, right.



A. I. Levorsen Award

The A. I. Levorsen Award is given by the national American Association of Petroleum Geologists in recognition of the best paper at each AAPG Section meeting. Honored for his 2013 paper is Dr. Todd J. Greene, California State University, Chico. Todd is flanked by Bob Lindblom, left, and Dan Schwartz, right.

*Photos by
Stefano
Mazzoni*

FORT DAVIS PALEONTOLOGIC & STRATIGRAPHIC CONSULTANTS

William G. Reay

112 Arabella Dr
Fort Davis, TX, 79734
432.426.2443

wgreay@mztv.net

Age dating and environmental determinations of the LA Basin, the Ventura Basin, the San Joaquin and Sacramento sections, as well as the Alaskan Cook Inlet and Post Paleozoic North Slopes section

Michael A. Riddle
Sales & Solutions

Wireline & Testing
5080 California Ave., Ste. 400
Bakersfield, CA 93309
Mobile: (661) 978-5719
Main: (661) 387-7300
riddle2@slb.com

Schlumberger

Distinguished Service Award

The Distinguished Service Award is given to PSAAPG members “in recognition of singular and beneficial long-term service to the Section and/or affiliated societies. The term singular does not mean without precedent, but rather the activity is specific as distinguished from general service.” This years’ honorees are Bonnie Bloeser, AERA Energy, Tim Elam, Chevron (retired) and Cynthia Huggins, AERA Energy.



Distinguished Service Award winners Bonnie Bloeser (above left), Cynthia Huggins (above right), and Tim Elam (left), flanked in each photo by Bob Lindblom and Dan Schwartz.

*Photos by
Stefano
Mazzoni*



AAPG President Lee Krystinik delivered the keynote address at the PSAAPG All Convention Luncheon.

Distinguished Educator Award



Dr. Jan Gillespie, California State University, Bakersfield, receives the Distinguished Educator Award from Bob Lindblom, left, and Dan Schwartz, right.



The Team from San Diego State University won the 2014 PSAAPG Imperial Barrel Award Competition. At left is Team mentor Kip Herring, and at right is PSAAPG President Dan Schwartz.



The Martin Van Couvering Award honors students selected to attend the PSAAPG Convention. The 2014 Van Couvering honorees are flanked by AAPG President Lee Krystinik, left, and PSAAPG Foundation Chair Mark Wilson. (See p. 6 for a list of the winners).

Photos by
Stefano
Mazzoni



GEOLOGIC WELL LOGGING

R. Larry Swarens

Geologist / Owner

P.O. Box 41468
Sacramento, CA 95841

(916) 206-2956
strata-graphic.com
stratagraphic@surewest.net

J.M. "BUZZ" DELANO, JR.
Consultant

Cell (661) 747-0337
Office (661) 832-5229
Fax (661) 832-5229
Email: BuzzBake@aol.com

Delano Petrophysical
Consulting Services

816 Ferdinand Ct.
Bakersfield, California 93309

Dipmeter Analysis
Tape Conversion Editing
Expert Petrophysical Analysis
Wellsite Supervision

Student Q & A Panel: The Transition- Academia to Industry

For the second year in a row a Student Q&A Panel was held at the PSAAPG Convention. Last year's panel was very well received in Monterey. This year we decided to focus more on the topic "The Transition- Academia to Industry." Many students are preparing to graduate and are anxious to know how to bridge the gap from being a geoscience student to a professional geoscientist. 94 students registered for the event. The students had the opportunity to submit questions when they registered for the event. The panel consisted of Jean Kulla, a consultant from the Los Angeles basin area, Scott Kenyon, a recent graduate of CSULB and new hire for Chevron, Lee Krystinik, AAPG President, Jan Gillespie, a professor from CSUB, and Mark Maroun, a graduate of SDSU and geologist for Aera. The panel had a wide variety industry experience with work in Research and Development, exploration, production, and consulting. They also had a range of degrees in geology, including MS and PhD.

The panel answered questions that were submitted online in addition to questions that developed in discussion. Questions ranged from "What type of student involvement are companies looking for," to "Is it better to start grad school right after undergrad, or is it better to gain work experience?" The panel answered questions about what recruiters are really looking for and what students should know before their next interview, how to get that interview, and ways to successfully transition into the corporate environment.

YP- Speed Mentoring

Directly following the Student Q&A Panel was the popular Young Professional (YP) Speed Mentoring. Many of the students and panel stayed after the Student Q&A to participate in Speed Mentoring. It provided the opportunity for students and early career geologists to mingle and pick the brains of industry professionals with various amounts of experience in a less formal setting. Students hopped from table to table taking advantage of so much experience in the room.

Student Fieldtrip (Field Trip #8)

At this year's field trip we provided an inside look into two service companies...very important components of our industry.

Students were given tours of Schlumberger's Tool Shop, where they were able to see logging tools up close and in person (*see photos on next page.*) They were given brief theory on the many tools, practical tool applications, and demonstrations of how the tools open/close downhole. They also got to see how the sidewall core guns and conventional core barrels function and what the inside of a logging truck looks like. Schlumberger generously provided lunch and talked with the students about what types of jobs are available for students with both a BS and MS in geology.

After lunch the fieldtrip continued to Core Lab. They were given a full tour of the facility. They saw 1) where core is cut in the workshop, 2) where core is CT-scanned, 3) where core is photographed, and 4) the many analyses that Core Lab provides. Earlier in the day, a Core Workshop was also held at Core Lab. The students were fortunate enough to have two local geologists stay after the Workshop and discuss core from local fields during the field trip. Emily Fisher of Aera showed core from the Midway-Sunset Field, and Larry Knauer of Chevron showed core from the Kern River Field.

It was a great way for the students to see how subsurface data is collected and what happens to the rock once it's pulled out of the ground. A big thank you to Masood Khan and Will Turner from Schlumberger for the tour and for providing lunch. Also, thank you to Linda Specht from Core Lab for allowing the students behind the scenes, and to Emily Fisher and Larry Knauer for sharing your core with the students.

EDITORS NOTE: *This article was submitted by Becca Lanners, who is the Pacific Section Liaison to Student AAPG Chapters and was on the Convention Committee, charged with organizing Student Volunteers and Activities.*

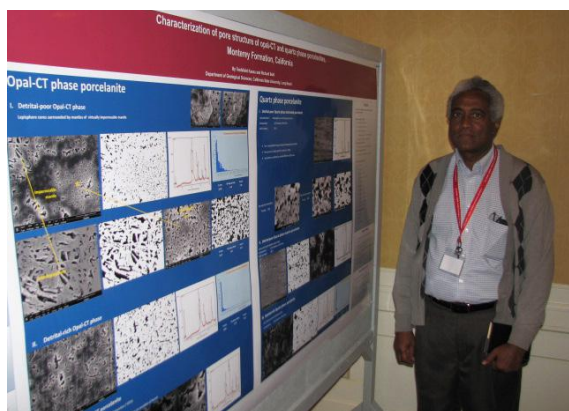


Student field trip activities at Schlumberger (above) and Core Lab (below)



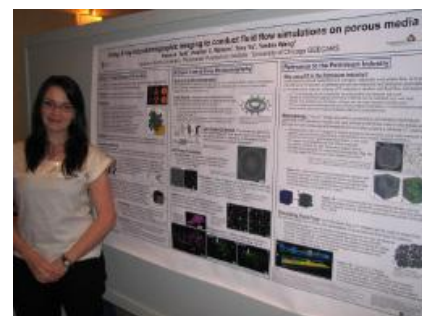
Student Q & A Panel: The Transition-Academia to Industry



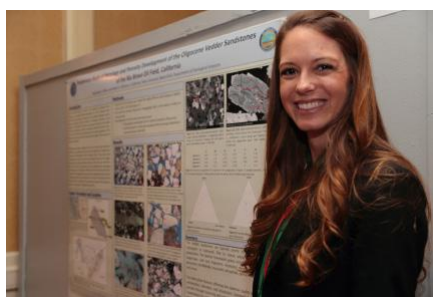


Photos by
Noel Velasco
Mike Lewis
Stefano Mazzoni
Tim Elam

More Convention photos to come in the July/August issue



Photos by
Noel Velasco
Mike Lewis
Stefano Mazzoni
Tim Elam





FIELD TRIP #6 Participants standing at the “mini Grand Canyon” of Sespe Formation outcrops on South Mountain oilfield in the Ventura Basin.



FIELD TRIP #6 Thick section of high-density amalgamated turbidites of the Towsley Formation, Towsley Canyon, eastern Ventura Basin.



FIELD TRIP #2 Pablo Triana shows off a stunning blue-gray 1.5 inch mako shark tooth still in matrix; “the big one that didn’t get away.”

*Photos by
Stefano Mazzoni, Tim Elam
Amy Moss-Russell*



FIELD TRIP #7 Participants of the Eastside San Joaquin Field Trip

Marty Hall
US Marketing / Sales Manager




7765 Windwood Way
P.O. Box 549
Parker, CO 80134
USA

P: 720.851.6152
C: 303.885.8860

C: +1(303) 885.8860

geokinetics.com
marty.hall@geokinetics.com
marty.hall@geokinetics.com



Geolog

GEOLOGICAL LOGGING INC.
9229 Beatty Drive, Suite B
Sacramento, CA 95826
Telephone 916-452-9570
Cell 952-8975 Fax 452-9573
geolog@sbcglobal.net

ERNIE BURROUGHS
President/Owner
Registered Geologist No. 1628

The Only Congress Focused On Taking New Steps In Driving The Monterey, The Kreyenhagen And The Wider San Joaquin, Santa Maria And LA Basins To Enable Commercial Production In California's Unconventional Reservoirs



TIGHT OIL RESERVOIRS CALIFORNIA 2014

Optimizing Crude Production In California's Heterogeneous Unconventional Reservoirs

June 25-26 | Bakersfield | California

SAVE \$200
Register By Friday
MAY 23

Identifying Productive Zones And Determining The Most Appropriate Stimulation And Production Techniques For California's Shale And Unconventional Tight Reservoirs:

Hydraulic Fracturing, Steam Injection And Acidization

Expert Insight From Over 20 Industry Professionals Including Major Californian E&P Operators & Regulatory Authorities:

Key Topics To Be Discussed In This Year's Agenda:



Otto Welper
CEO
Viking International Petroleum



Paul Gagnon
SVP
Central Resources Inc.



Ramon Elias
VP Reservoir Engineering
Santa Maria Energy



Timothy Smith
President & CIO
Petro Lucrum



Attila Aksehirili
Lead Petroleum Engineer -
TTA Diatomite
Chevron



Glen Honstein
Principal
Petrojen Production Company



John Harris
Geologist
Amrich Energy Inc.



Corey Lazaruk
Project Manager
Chevron

- PETROPHYSICAL DATA - DIATOMITE
- DIATOMITE PRODUCTION
- SHALE RESERVOIR CHARACTERIZATION
- FRACTURE MODELING
- PERMIT APPROVAL - SB4
- HYDRAULIC FRACTURING - SHALE
- ACID FRACTURING - SHALE

Organized By: **American Business Conferences**

*T&Cs Apply. Discount available to new registrations only.

Follow Us: @UnconventOilGas

www.tight-oil-monterey-california-2014.com

+ (1) 800 721 3915
info@american-business-conferences.com



FIELD TRIP #6 Thom Davis (left) describes the San Andreas Fault along Soda Lake Road, San Luis Obispo County.



FIELD TRIP #2 Brian Holcombe shows off a handful of the many colorful mako shark teeth he collected at Sharktooth Hill.



FIELD TRIP #6 Stuart Gordon describes the Cuyama Basin petroleum system near Russell Ranch oilfield.



FIELD TRIP #2 At Sharktooth Hill, each field trip participant left with lots more teeth than the 32 they arrived with :).

More Convention photos to come in the July/August issue

*Photos by
Stefano Mazzone
Tim Elam*

www.mrlphotobako.com

**Michael R Lewis
Photography**

Michael R Lewis
Commercial Photography
661-246-8466
mrlphoto@yahoo.com
1527 19th Street, Suite 332
Bakersfield, Ca 93301

A circular logo with a dark background and a bright, glowing yellow and orange center, resembling a lens or a light source.

Making Unconventional, **Conventional**



PetroFecta® from **Fluid Inclusion Technologies**

*is a unique approach combining
XRF (**PDQ-XRF®**), Trapped Fluid Analysis
(**FIS®**), and High Resolution Photography
(**RockEye®**) of the entire wellbore from well
cuttings or core samples of any age.*

*All analyses are conducted on the same
1 gram sample (up to 575 samples per well)
with an analytical cycle of four days.*

*Data provided on a DVD with
previewer software.*



Innovations in Petroleum Risk Management

Information about **PetroFecta®** and other FIT services, call **918.461.8984** or visit **www.fittulsa.com**

In the May-June 2013 issue of the *Pacific Petroleum Geologist*, a new Dual-Credit Geology program, administered through Cal State Bakersfield and the Kern (County) High School District, was highlighted. The program continues to be successful, as the 2013/2014 classes wrap up. 350 students at South, Ridgeview, North, Arvin, Frontier, and Highland High Schools in Kern County participated in the program this school year.

The program was featured as a national “best practices” model at a recent National Science Foundation workshop on Broadening Access in the Earth and Environmental Sciences. Also, the KHSD-CSUB group organized a Topical Session on the classes at the 2013 Annual Meeting of the Geological Society of America. Support from Pacific Section AAPG was recognized at both events.

For 2014-2015, new classes with the same number of students at the same schools are scheduled. In fall 2013, 11 of the 30 new Geology majors at CSUB came through the Dual Credit program classes.



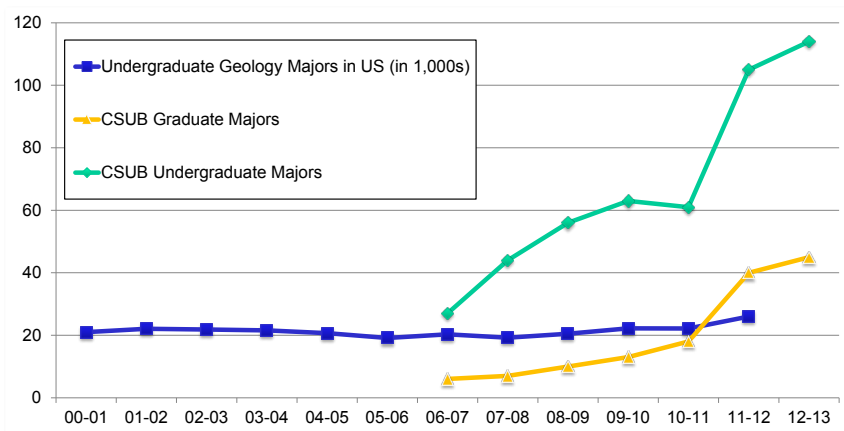
The CSUB-KHSD team at the 2013 GSA meeting in Denver.



PSAAPG Teacher of the Year Steve Kiouses, second from left, with CSUB's Dirk Baron, left, and three Ridgeview H.S. Geology majors-to-be at CSUB.



Dual Credit students on a Geology field trip to see Kern River Fm. sands.



Graph to the left shows Earth Science enrollment is increasing after years of stagnant growth. The yellow and green curves show the trend is amplified at CSUB.

Southern California Geology Adventure

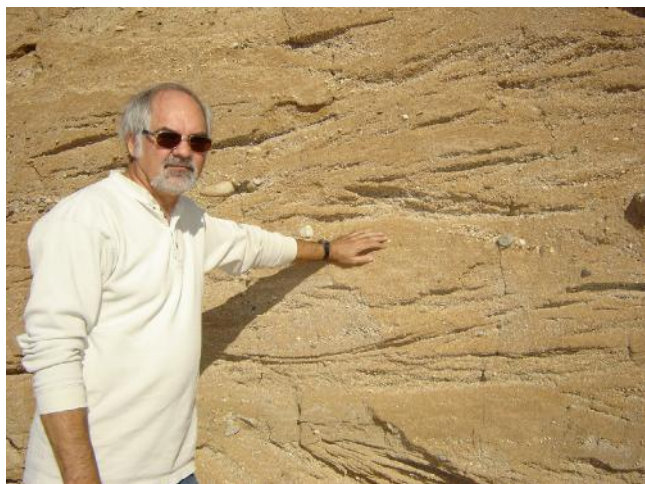
Here in SOCAL we are known for a lot of things including: traffic, crowds, and earthquakes. At the risk of divulging a very well-kept secret, we also have a geology paradise. No, I don't mean the Miocene Monterey or the San Andreas fault, but have you heard about Anza-Borrego State Park? There is no traffic, no crowds, and just a few earthquakes. The geology is varied and spectacular; and it is only a few hours drive from LA or the OC (Orange County).

Anza-Borrego Desert State Park is the largest state park in the world made up of 634,000 acres. The varied geology includes: meta-sediments and volcanic related to mountain building activities and wonderful sequences of conglomerate, breccia, turbidites, and fluvial-deltaic and tidal sediments related to the complex deposition related to the opening of the Gulf of California. Particularly interesting are Upper Miocene sediments of the Split Mt. Group. Enjoy the photos below.



FIGURES 1,2

Split Mountain (above two photos) shows a beautiful sequence of sediments derived from the Colorado Plateau and deposited into the 'proto' Gulf of California.



FIGURES 3, 4

Love those sedimentary structures indicating flow regime and the depositional environment. Geophysicist Ted Koelsch (above & right) is the 6-foot tall scale.

FIGURE 5
Close up of
breccia (in Fig-
ure 6).



FIGURE 7
The 'badlands' show another character of the geology in the park. The author is standing at Font's Point looking out over Plio-Pleistocene age Borrego Formation.



FIGURE 9
Beautiful fold (at left) shows the heart of the Split Mountain anticline.



FIGURE 6
Layers of breccia sandwiched between sandstone and claystone at base are clues to the tectonic activity.



FIGURE 8
Watching the moon rise over the Santa Rosa Mtns, sitting at the Oasis, with a glass of wine in hand (not shown:). The perfect end to a perfect geology adventure.
May your roads lead to peace.



EarthQuest Technical Services, LLC

David R. Walter

drwalter@eqtservices.com
www.eqtservices.com

RESERVOIR CHARACTERIZATION
GEOLOGY
PETROPHYSICS
DATABASE MANAGEMENT
DIGITIZING & SCANNING

2201 'F' Street
Bakersfield, CA 93301
661•321•3136



DHISERVICES

Formation Evaluation Specialists

www.dhiservices.com

Les Collins
Regional Operations Manager

2202 Zeus Court
Bakersfield, CA 93308
Tel: +1 (661) 588-8310
Fax: +1 (661) 588-8322
Cell: +1 (661) 742-2720
Email: lcollins@dhiservices.com

We have a lot happening at LABGS in the next couple of months and are looking forward to our great speakers, special events, and awarding PSAAPG/LABGS scholarships to some bright and deserving SOCAL college students.

Meetings and Speakers

At our March meeting, Dr. Robert Anderson from the Jet Propulsion Laboratory in Pasadena, CA. gave a very interesting presentation on the geologic history of Mars. *(See Figures 1 and 2 at bottom of page.)*

We are looking forward to our meeting on May 22, Glen Sharman will be presenting “**Zircon Indications for Offset of the San Andreas Fault.**”

Additionally in May we will be awarding scholarships from PSAAPG and LABGS to the following students:

From CSU-Long Beach: Michael Thompson; Yannick Wirtz; Amar Rao; Derik De Baun; Sara Price; Brendan Neel; Scott Brito; Jennifer Leidelmeijer; Georgeanne Aronson; Kristen Faulkner; and Benjamin Davidson.

From CSU-Fullerton: Peter Kloess; Edween Hernandez; Daniel Philo; and Kelly Shaw.

From UC-Riverside: Alexander Valentine and Evelyn Becerra.

From Occidental College: Robin Bruns.

Congratulations to all!

On June 26, LABGS is very proud to have our very own – and always distinguished Don Clarke, who will honor us with his AAPG Distinguished Lecture “**Hydraulic Fracturing and Earthquakes: Ethically, How Do We Move Forward and Do the Right Thing?**”

The Students are the Future

Within the past year or so, some very bright and hardworking geology students at Cal State – Fullerton have been in the process of reviving the AAPG Student chapter. I was very pleased to be invited to an April 16th Q&A meeting of the student chapter at Cal State – Fullerton. Over twenty geology students participated in the Q&A, which lasted about two hours. They asked questions about working as a geologist for oil/energy and for environmental companies. Also, we had a lively discussion of what we as professionals can do to help students find out more about careers in industry and how to better connect (ie. network) at meetings. Do any of us remember when we were students, how intimidating it was at meetings to go up to the ‘pros’ to introduce ourselves and try to start a conversation? I challenge every one of us to make it a point at the next meeting we attend to engage at least two to five students in meaningful conversation – go up to them, introduce yourself and start talking about what you do!

Figures 1, right:
Dr. Robert Anderson, NASA Jet Propulsion Laboratory, speaks to LABGS about geologic discoveries on Mars.



The University of Oregon Geology Club has organized an AAPG Student Chapter and submitted an application for formal recognition to AAPG-Tulsa.

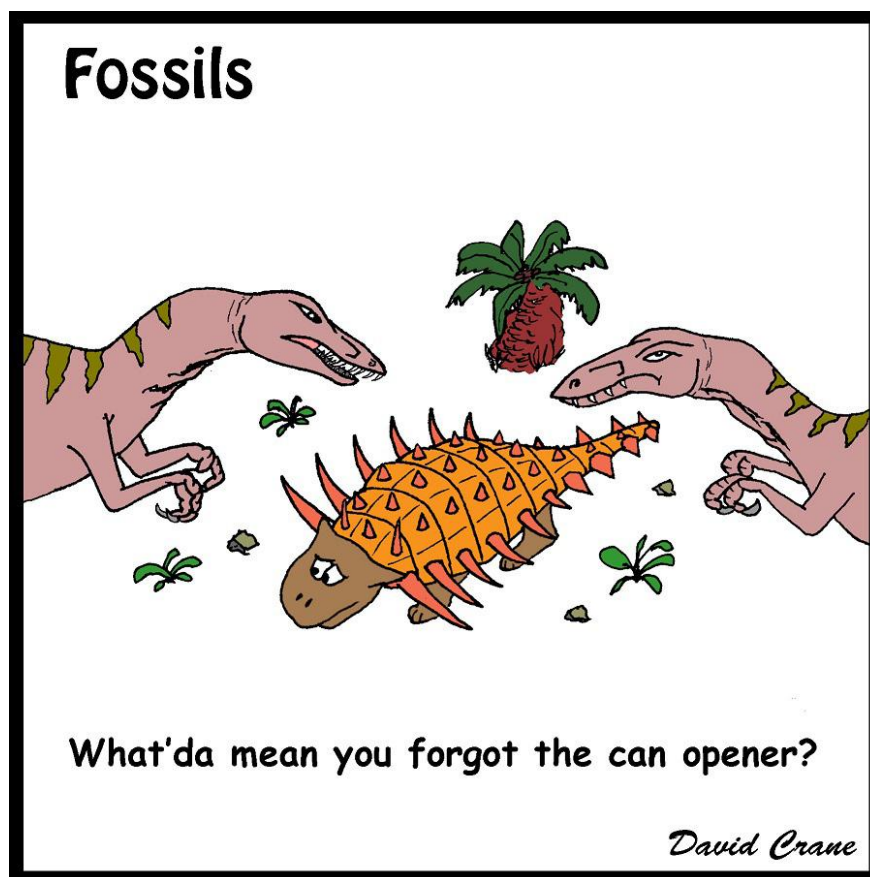
Thirteen students have applied for Student Membership in AAPG, and have elected officers for a Student Chapter under the mentorship of David Blackwell as Faculty Advisor. David, a member of the University of Oregon Geoscience Department faculty, has been the leader in this initiative and the students have exhibited enthusiasm about envisioning potential career direction in petroleum geology. Sponsorship is by Northwest Energy Association, Jim Jackson, Acting-President. NWEA is an affiliated society of the Pacific Section AAPG.

In reality, it was your correspondence on behalf of Pacific Section AAPG this past Fall that got this effort started. Inquiries at Oregon State University, facilitated by Al Niem, have identified possible faculty support and it is hoped that this next year a Student Chapter can be formed in Corvallis. Preliminary contact with Washington State University has been made with identification of one past AAPG member that might be a sponsor/advisor in Pullman.

Northwest Energy Association is pleased to have been a participant in this effort on behalf of the Pacific Section, and will continue to work toward Student AAPG Chapters at each of the four major Pacific Northwest Universities in the coming academic year.

Best regards,

John M. Armentrout



NEXT Newsletter Deadline

(July/August Issue): July 1st, 2014

Alaska Geological Society

- **May 15 8:30-4:30 Alaska Geological Society Technical Conference**, University of Alaska, Anchorage. **KEYNOTE SPEAKER:** David LePain, Alaska DGGs, "Geologic Framework of Cook Inlet Basin, South-Central Alaska: The Depositional Systems Perspective.

Coast Geological Society

- **May 20 Meeting:** SPECIAL ANNUAL AWARDS DINNER; Program: "Tectonic Geomorphology of the Santa Barbara - Gaviota Coast;" **SPEAKER:** Dr. Ed Keller.
- **June:** No meeting; Recess for Summer

L.A. Basin Geological Society

- **May 22 Meeting:** "Zircon Indications for Offset of the San Andreas Fault;" **SPEAKER:** Glen Sharman
- **June 26 Meeting:** AAPG DISTINGUISHED LECTURE: "Hydraulic Fracturing and Earthquakes: Ethically, How Do We Move Forward and Do the Right Thing?" **SPEAKER:** Don Clarke, Consultant.

Northern California Geological Society

- **May 28 Meeting:** SPECIAL 70th ANNIVERSARY DINNER MEETING: "Why Don't Vertebrates Care About Mass Extinctions;" **SPEAKER:** Dr. Kevin Padian, Professor and Curator, Department of Integrative Biology and Museum of Paleontology, University of California, Berkeley
- **June 25 Meeting:** TBA; Last meeting of the season

Northwest Energy Association

- **May 15 Meeting:** "Update of the Jackson Prairie Storage Facility;" **SPEAKER:** Bob Pinotti, Senior Geologist, Jackson Prairie Gas Storage, Puget Sound Energy.

Sacramento Petroleum Association

- **May Meeting:** No meeting
- **June Meeting:** To Be Announced

San Joaquin Geological Society

- **May 13 Meeting:** "STUDENT NIGHT- Research from Cal State, Bakersfield, Cal State Fresno, Bakersfield College. **PROGRAMS:** "Characterization of Discontinuity Surfaces and Microfacies in a Devonian Epeiric Sea, Iowa;" **SPEAKER:** Chris Bowie, Fresno State University; ALSO "Holocene-Aged Lake Sediments From The Southeastern Margin Of Tulare Lake, CA;" **SPEAKER:** Brandon Jackson, Cal State Bakersfield
- **June 10 Meeting:** "Geysers - Greywacke reservoirs, altered caprocks, and more!" **SPEAKER:** Joe Austin, California DOGGR.

2015 PSAAPG CONVENTION

The Pacific Section AAPG 2015 Convention will be in Ventura/Oxnard California, May 3-6, 2015, at the Embassy Suites- Mandalay Bay in Oxnard. Convention Chair Joan Barminski welcomes inquiries and involvement; her contact address is joan.barminski@boem.gov.

-Joan Barminski

Alaska Geological Society

www.alaskageology.org

P. O. Box 101288
Anchorage, AK 99510

Contact: Eric Cannon
eric_cannon@golder.com



Luncheon meetings are held monthly September through May, usually on the third Thursday of the month, at the BP Energy Center (1014 Energy Court) from 11:30 a.m. to 1:00 p.m. The hot lunch cost is \$20 for members with reservations; \$22 for non-members with reservations; and \$25 without reservations. The box lunch cost is \$13 for members with reservations, \$15 for non-members with reservations, and \$18 without reservations. For reservations, call the AGS reservation voice mail at 907-258-9059 or contact David Hite at hiteconsult@acsalaska.net by noon on Monday before the meeting.

President: Matt Frankforter
President-Elect: Keith Torrance
Vice-President: Monty Mabry
Secretary: Eric Cannon
Treasurer: Alan Hunter
Past-President: Ken Helmold

mfrankforter@hilcorp.com
ktorrance at apcservicesllc.com
monte.mabry@bp.com
eric_cannon@golder.com
paleoman@mac.com
ken.helmold@alaska.gov

Coast Geological Society

www.coastgeologicalsociety.org

P. O. Box 3055
Ventura, CA 93006

Contact: Peter Morris
805.745.2149



Dinner meetings are held monthly September through May, on the third Tuesday of the month, at Poinsettia Pavilion, 3451 Foothill Road in Ventura. Social hour starts at 6:00 p.m., dinner is served at 7:00 p.m., and the talk starts at 8:00 p.m. The cost of dinner with reservations is \$20 (members), \$25 (non-members), or \$10 (students and K-12 teachers); the talk is free. For reservations, please email Bonnie Walters (secretary@coastgeologicalsociety.org), and should be made by 4:00 p.m. on the Friday before the meeting.

President: Peter Morris 805-745-2149
Past President: John Harris 805-407-7644
Vice President: Bob Blackmur 805-535-2025
Secretary: Bonnie Walters 805-933-0076 Ext 292
Treasurer: Christine White 805-535-2074
Membership: Nick Kunstek
Webmaster: Whit Skaling

president@coastgeologicalsociety.org
pastpresident@coastgeologicalsociety.org
vicepresident@coastgeologicalsociety.org
secretary@coastgeologicalsociety.org
treasurer@coastgeologicalsociety.org
membership@coastgeologicalsociety.org
webmaster@coastgeologicalsociety.org

Los Angeles Basin Geological Society

www.labgs.org

515 So. Flower Street, Ste 4800
Los Angeles, CA 90071

Contact: Jean Kulla
949-500-3095



Luncheon meetings are held monthly September and October; and January through June, usually on the fourth Thursday of the month, in the Monarch Room at The Grand at Willow Street Conference Centre (4101 E. Willow Street) in Long Beach. Lunch is served at 11:30 a.m., and the talk starts at 12:15 p.m. The cost is \$20 (with reservations), \$25 (without reservations), or \$5 for students. Reservations can be made online at www.labgs.org or by contacting Marieke Gaudet at 562.624.3364 or marieke_gaudet@oxy.com. Reservations must be made prior to Tuesday before the meeting.

President: Jean B. Kulla 949-500-3095
Vice President: Greg Hummel 310.327.1100 X 5
Assistant V.P. Katherine Kovac 801-574-9927
Treasurer: Bert Vogler 562.432.1696
Secretary: Graham Wilson 562.326.5278
Scholarships: Karla Tucker 714.658.0474

k2mobile@MSN.com
ghummel@ebresources.com
katherine_kovac@oxy.com
hvogler@kleinfelder.com
Gwilson@SHPI.net
ktrk2@aol.com

Northern California Geological Society

www.ncgeolsoc.org

9 Bramblewood Court
Danville, CA 94506-1130

Contact: Barb Matz
Barbara.Matz@shawgrp.com



Evening meetings are held monthly September through May, usually on the last Wednesday of the month, at the Masonic Center (9 Altarinda Road) in Orinda. Social hour starts at 6:30 p.m., and the talk starts at 7:00 p.m. (no dinner). For reservations, contact Dan Day at danday94@pacbell.net before the meeting. Cost is \$5 per regular member; \$1 per student member; and \$1 per K-12 teachers.

Continued on next page

NCGS Officers:

President:	Phil Reed	philecreed@yahoo.com
Program Chair:	John Karachewski	cageo@sbcglobal.net
Secretary	Dan Day	danday94@pacbell.net
Treasurer	Phil Reed	philecreed@yahoo.com
Membership Chair	Rob Nelson	rlngeology@sbcglobal.net
Newsletter Editor	Mark Detterman	mdetter1@gmail.com
Field Trip Coordinator	Tridib Guha	tridibguha@yahoo.com
Past President	Tom Barry	tomasbarry@aol.com
Scholarships	Phil Garbutt	plgarbutt@comcast.net
K-12 programs	Mark Petrofsky	mpetrof@hotmail.com

Northwest Energy Association

www.nwenergyassociation.org

P. O. Box 6679

Portland, OR 97228-6679

Contact:

Jim Jackson or John Armentrout



Breakfast meetings are held monthly September through May, usually on the second Friday of the month, at the Multnomah Athletic Club (1849 SW. Salmon Street) in Portland. Meeting time is at 7:30 - 9:00 am. The cost is \$18. For information or reservations, contact Jim Jackson.

Acting President	John Armentrout	jarmenrock@gmail.com
Program Chair	Jim Jackson	503.771.3887 jackson.js@comcast.net

Sacramento Petroleum Association

P. O. Box 571

Sacramento, CA 95812-0571

Contact: David Hartley

530.304.4277



Luncheon meetings held monthly January through November, on the third Wednesday of the month. Location: Club Pheasant Restaurant in West Sacramento. The meetings starts at noon. The cost is \$16 - \$20. For information or reservations, contact Pam Ceccarelli.

President:	Jerry Reedy	916.486.2643	JWR5532@aol.com
Vice-President:	David Hartley	530.304.4277	drilmax1@aol.com
Secretary	Derek Jones	916.859.4710	djones@gasbiz.com
Editor/Treasurer	Pam Ceccarelli	916.439.0400	pc626@comcast.net

San Joaquin Geological Society

www.sanjoaquingeologicalsociety.org

P. O. Box 1056

Bakersfield, CA 93302

Contact: Laura Bazeley

lbazeley@wziinc.com



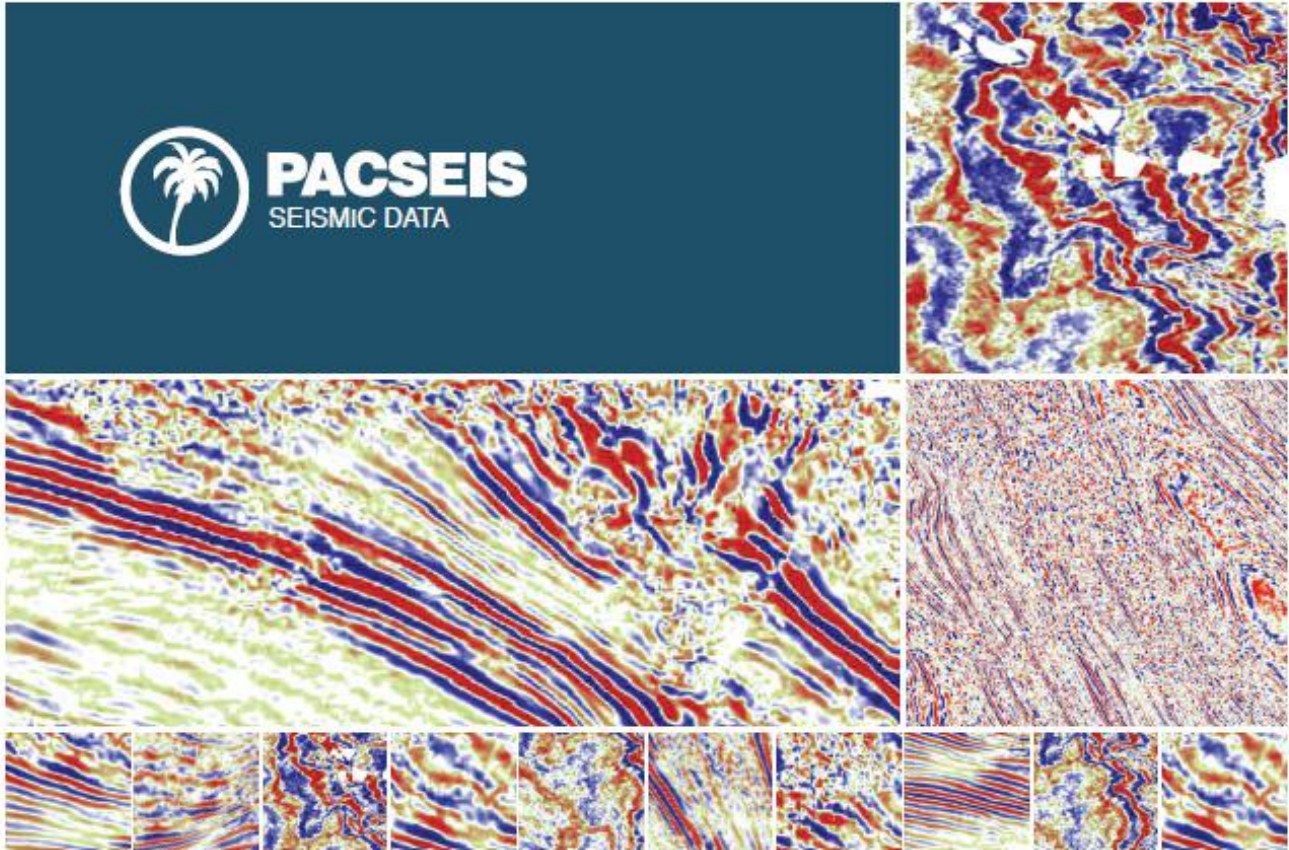
We have dinner meetings on the second Tuesday of the month at the American Legion Hall at 2020 "H Street" in Bakersfield. There is an icebreaker at 6:00 pm, dinner at 7:00 pm, and a talk at 8:00 pm. Dinner is \$25.00 for members with reservations and \$30.00 for nonmembers and members without reservations, and the talks are free.

President:	Laura Bazeley	661.326.1112	lbazeley@wziinc.com
Past President:	Vaughn Thompson	661.633.4748	Vaughn_Thompson@oxy.com
President-Elect:	Anne Draucker	661.428.0350	AnneDraucker@chevron.com
Vice-President:	Jon Allen	661.654.7516	Jonathan.allen@chevron.com
Secretary:	Evan Bargnesi	661.412.5143	Evan_Bargnesi@oxy.com
Treasurer:	Noel Velasco	661.817.4909	novelasco@aeraenergy.com



PACIFIC SECTION AAPG
P. O. Box 1072
BAKERSFIELD, CA 93302

PRESORTED
STANDARD
U.S. POSTAGE PAID
BAKERSFIELD, CA
PERMIT NO. 1163



PACIFIC SEISMIC COMPANY

The leader in subsurface information

RESOURCES THAT DELIVER THE DIFFERENCE

- One of the largest seismic databases available for license
- Seismic available for immediate license
Over 500,000 line miles of 2D data located in domestic United States (onshore & offshore)
- 2,500 square miles of 3D surveys

RECENTLY ACQUIRED SEISMIC DATABASES BY PACIFIC SEISMIC CO.

- Chevron USA California, OXY USA Nationwide (including Arco & Enron)
- Santa Fe energy, TXO, Cities Service Oil & Gas Nationwide
- Southern Pacific, PG&E/ NGC, SOHIO

PACIFIC SEISMIC COMPANY | Your Full-Service Seismic Brokerage & Acquisition Company

EXPLORATION CONSULTING

PROSPECT FINANCING

PROJECT DEVELOPMENT

Tel (661) 322-1171 | Fax (661) 322-1181 • www.pacseis.com | Bakersfield | Houston | Denver