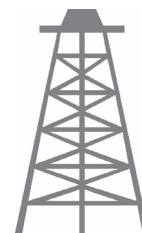




Pacific Petroleum Geology



NEWSLETTER

Pacific Section • American Association of Petroleum Geologists

November & December 2012



Fall Field Season

www.psaapg.org

Get More from your Core



With reservoirs becoming increasingly complex, you need the most accurate information you can get to better understand your reservoir.

Weatherford Labs helps you get more from your core by combining an unsurpassed global team of geoscientists, engineers, technicians and researchers with the industry's most comprehensive, integrated laboratory services worldwide. From core analysis, sorption, geochemistry and isotopic composition to detailed basin modeling and comprehensive data packages, we provide you with real reservoir rock and fluid information that hasn't been distilled by a simulator or iterated by software.

We call it "The Ground Truth™" – giving you the accurate answers you need for better reservoir understanding. You'll call it a better return on your reservoir investment. To learn more, contact TheGroundTruth@weatherfordlabs.com.



2012-2013 OFFICERS

President Tony Reid
661.412.5467
president@psaapg.org

President-Elect Dan Schwartz
661.665.5832
president-elect@psaapg.org

Vice President Jana McIntyre
661.869.8231
vice-president@psaapg.org

Secretary Becca Lanners
562.495.9310
secretary@psaapg.org

Treasurer 2011-2013 Jennifer Anderson
661.363.3226
treasurer@psaapg.org

Treasurer 2012-2014 Jack Grippi
661.665.5061
treasurer@psaapg.org

Past President John Minch
805.898.9200
president@psaapg.org

Editor-in-Chief 2012-2014 Tim Elam
661.378.6790
editor@psaapg.org

STAFF

Web Master Bob Countryman
661.589.8580
webmaster@psaapg.org

Membership Chair Evan Bargnesi
661.859.9713
membership@psaapg.org

Publications Chair Larry Knauer
661.392.2471
publications@psaapg.org
LarryKnauer@chevron.com

Advisory Council Representative Jon Schwalbach
2012-2014 805.648.8518
JRSchwalbach@aeraenergy.com

Cover Photo: Painted Rock, a monolith of Lower Miocene Vaqueros sandstone in the Carizzo Plain National Monument, eastern Cuyama Basin, San Luis Obispo County, Ca. The name "Painted Rock" was coined due to the presence of Yokuts and Chumash Native American pictographs. Vaqueros sandstones are major oil reservoirs in the Cuyama Basin. Photo provided by the editor.

EVERY ISSUE

4 Message from the President • T. Reid

5 Editor's Corner • T. Elam

6 In Memoriam

8 PSAAPG News

8 FOSSILS

16-19 Member Society News

THIS ISSUE

7 Bob Gray Retires from Santa Barbara City College- Tim Elam and Jan Dependahl

9 Teacher of the Year Award- Bob Ballog

10-12 2013 PSAAPG Convention

14-15 West Coast Student Expo- Kathie Marsaglia

19 Los Angeles Basin Geological Society Events- Jean Kulla



This edition of the newsletter contains information about our annual meeting. Note these convention dates and location: April 19-25, 2013, Portola Hotel and Spa, Monterey, California. Paul Henshaw and his convention committee are assembling an excellent program of sessions, field trips and short courses. The abstract submittal period is now open and continues through January 15, 2013. Please see the Call for Papers included in the newsletter for information on sessions and for instructions on how to submit an abstract.

Your participation at the Convention is very important. The sharing of technical information is a critical function of our meetings. You benefit by gaining recognition from your peers, and by receiving feedback on your ideas. The audience benefits by getting insights into the latest in geologic concepts. Please consider presenting an oral presentation or poster at our Monterey meeting.

This issue also contains a report by Dr. Kathie Marsaglia on the recent AAPG/SEG Student Expo. The Pacific Section is a sponsor for the Expo that was held October 11-13 at CSU Northridge. The purpose of the Expo is to bring geoscience students and future employers together. Students from universities not on recruiters' stops have the opportunity to be introduced to multiple companies and work environments. Kathie has organized an event that provides numerous opportunities for students and employers to interact. This year, these included field trips, a poster session with 50 participants, a luncheon with employers pitching their organizations, and a session with employer booths where students can quiz company representatives. On the day following the information sessions, students participated in employment interviews.

This year, over 150 students attended the event from universities from all over the world, but mostly from West Coast universities. I had the opportunity to represent the Pacific Section at a modest booth. My goal was to introduce students to AAPG and the Pacific Section by encouraging poster presenters to submit abstracts for next year's Monterey meeting and by encouraging students to join and become active in student chapters, the Imperial Barrel Award (IBA) competition, and convention activities. In my discussions with students I learned about new student chapters and of growing interest in IBA. It is great to see the influence of AAPG and the Pacific Section growing in the student community. The Pacific Section will continue to be a sponsor for the Expo because of the chance to introduce students to our association and the professional community.

PAYZONE INC.
Geological, Geophysical, and Petrophysical Consulting Services for the Petroleum Industry 661-387-1715

- Training in advanced log analysis focused on California
- Accurate, consistent fieldwide reservoir properties for modeling
- Old E-Log Interpretation
- Rock properties from sand/diatomite/shale sequences
- Log data management/digital log database cleanup
- 2D/3D seismic interpretation, specializing in old 2D data

Our petrophysical models for diatomite and California sands are based on over 30 years of experience with these rocks, including core, log, and lithology data from every basin in the state

Deborah Olson, President
dmolson@payzoneinc.com
661-747-0375

Now Offering Image Log Interpretation Services!
www.payzoneinc.com

Tom Howard, Image Analyst
tomh@payzoneinc.com
832-407-2862

I want to occasionally highlight educational/fun opportunities open to folks within PSAAPG boundaries. So, with that emphasis in mind, I want to make you aware of a unique symposium that I have frequented for several years. The Desert Studies Symposium is a hidden gem of opportunity for folks wanting to see and hear about Mojave Desert research, particularly in geology. Each Symposium is a mix of verbal presentations followed by field trips.

Although the Desert Symposium is open to anyone, it isn't well known by many in the geologic community. It occurs over a three or four day period in April each year. It is held at the Desert Studies Center (DSC) at Zyzzx, about 60 miles northeast of Barstow, California. The facility name is a story in itself, which you can learn more about at the Desert Studies Center home page, found at www.biology.fullerton.edu. (CSU Fullerton is the California State University institution that provides administrative oversight for DSC.)



Attendees are an eclectic mix of science-oriented people, from high-profile researchers at CSU and USGS to "desert rats" looking for adventure. Attendance fees are amazingly minimal...between \$100-\$150...and include lodging and excellent meals cooked on-site. You may rub elbows with a researcher studying desert tortoises, bees, or even ubiquitous scrubby saltbush. But, cross-pollination of the sciences is a good thing.

Last year's (2012) theme, "Search for the Pliocene- the Southern Exposures," was a follow-up to 2011's theme "The Incredible Shrinking Pliocene." These names were coined because of the reclassification of Pliocene sediments into the Late Miocene that has occurred over several decades. Each year's theme is adhered to loosely...topics in structural geology, geomorphology, mining history, and paleontology are always well represented regardless of theme. 2012 field trips included a trip to view 1) the Helendale fault, a dextral fault within the Eastern California Shear Zone, 2) the massive Blackhawk landslide, which originated in the San Bernardino Mountains, 3) engineering implications of faulting in the Morongo Valley, 4) San Andreas Fault exposures in the Coachella Valley, and 5) stratigraphy and paleontology of the Anza-Borrego area. I hope that the 2013 Symposium dates don't conflict with the PSAAPG Monterey Convention, but that is a possibility.

Papers and field trip road logs from past Symposiums are put into yearly volumes that can be viewed and downloaded at no cost. To see these papers and field trip documentation since 2001, click on "Desert Symposium 2012" from the Desert Studies Center home page. You will see a list of past Symposium themes at the bottom of the page.

HAVE A GREAT HOLIDAY SEASON!

<p>Marty Hall US Marketing / Sales Manager</p> 	<p>7765 Windwood Way P.O. Box 549 Parker, CO 80134 USA</p> <p>P: 720.851.6152 C: 303.885.8860</p> <hr/> <p>geokinetics.com</p> <hr/> <p>marty.hall@geokinetics.com</p>
---	---

**FORT DAVIS PALEONTOLOGIC
& STRATIGRAPHIC CONSULTANTS**

William G. Reay

112 Arabella Dr
Fort Davis, TX, 79734
432.426.2443

wgreay@mztv.net

Age dating and environmental determinations of the LA Basin, the Ventura Basin, the San Joaquin and Sacramento sections, as well as the Alaskan Cook Inlet and Post Paleozoic North Slopes section

IN MEMORIAM- R. GORDON GASTIL

R. Gordon Gastil, Professor Emeritus at San Diego State University, passed away September 29, 2012. Dr. Gastil was a long time Cordilleran geologist who influenced and educated many Pacific Section geologists via his long career at San Diego State University.

Dr. Gastil received his PhD. in Geology from the University of California, Berkeley, in 1953. His geologic research focused on field mapping, radiometric dating, and mineral exploration. His geologic interests led him to take positions in Alaska, Canada, and Mexico prior to accepting his first teaching position at San Diego State. He often visited Mexico while doing research on the tectonic and geologic history of the Peninsular ranges and adjacent northern Mexico. He supervised 58 Master's theses at SDSU, as well as dozens of undergraduate projects. Dr. Gastil was awarded PSAAPG's Lifetime of Excellence in Mapping Award...the Dibblee Medal, in 2002.

He had numerous interests outside of geology in which he used life experiences. Dr. Gastil was an author of anthropological fiction, poetry, and environmentally-conscious literature. He served in the U.S. Army, and was an unsuccessful candidate for Congress in 1976.



GEOLOGICAL LOGGING INC.
9229 Beatty Drive, Suite B
Sacramento, CA 95826
Telephone 916-452-9570
Cell 952-8975 Fax 452-9573
geolog@sbcglobal.net

ERNIE BURROUGHS
President/Owner
Registered Geologist No. 1628



RESERVOIR CHARACTERIZATION
GEOLOGY
PETROPHYSICS
DATABASE MANAGEMENT
DIGITIZING & SCANNING

EarthQuest Technical Services, LLC

David R. Walter

drwalter@eqtservices.com
www.eqtservices.com

2201 'F' Street
Bakersfield, CA 93301
661-321-3136



PETROLOG
PETROLOG, INC.
JOHN T. WILLIAMS
Geologist, P.G.#5899, President

Geological Well Logging

P.O. BOX 7028
VENTURA, CA 93006
jtw@petrolog-geological.com

(805) 642-2847 • Fax (805) 980-5569 • Cell (805) 231-3793

J.M. "BUZZ" DELANO, JR.
Consultant

Cell (661) 747-0337
Office (661) 832-5229
Fax (661) 832-5229
Email: BuzzBake@aol.com

Delano Petrophysical
Consulting Services

816 Ferdinand Ct.
Bakersfield, California 93309

Dipmeter Analysis
Tape Conversion Editing
Expert Petrophysical Analysis
Wellsite Supervision

Dr. Robert Gray Retires from Santa Barbara City College

Bob Gray, Professor of Geology at Santa Barbara City College for 45 years, retired in June 2012 to become Professor Emeritus. He still teaches one class at SBCC, and leads Geology Club field trips on the weekends. Dr. Gray is immensely respected among his peers, and influenced the lives and careers of many Pacific Section geologists.

Dr. Gray's influence on the Coast Geological Society (CGS) is evident in many ways. He started bringing SBCC students to CGS meetings over 40 years ago, and now 10-20 students attend each CGS meeting.



The students attend the meetings thanks to contributions to SBCC's Geology Fund and Bob's generosity. The students regularly serve the dinners at CGS meetings...a tradition started by Bob. The students benefit from seeing high-quality geology presentations and interacting with working geologists. Bob's passion for geology and teaching is evident to all who have had the pleasure of meeting him. His role in developing the curriculum at SBCC has been immense. It is estimated that more than 700 geology students have majored in Geology at SBCC during Bob's tenure.

Amongst many honors, Dr. Gray received the PSAAPG Distinguished Educator Award in 1998, the PSAAPG Honorary Life Membership Award in 2010, and the Grover E. Murray Distinguished Educator Award at the AAPG Annual Convention in 2008. Most recently, Bob was nominated by SBCC for the Hayward Award for Excellence in Education in 2011-2012, which is given by the Academic Senate for California Community Colleges.

Bob is a native Southern Californian, raised in Pasadena. He received a Bachelor's degree in Geology from the University of Idaho, and Master's and Doctoral degrees from the University of Arizona. He worked in the petroleum and mineral industries for about five years in the 1960's before taking a position at Santa Barbara College in 1967. He was a long-time member of the U.S. Navy, rising to the rank of Commander.

SBCC colleague Janice Dependahl contributed the following: "Bob is an "old school" guy. He is the kind of man who always gives credit to those around him. He is self-effacing. He always contributes, and always attempts to leave a situation better than he found it. His students notice his selflessness. They are inspired by him, and many adopt these values for themselves. He makes people better, not just better geologists."

Congratulations, Bob!

JON ALLEN TO RECEIVE MATSON AWARD

PSAAPG/SJGS member Jon Allen will be awarded the Matson Award at the 2013 AAPG Annual Convention and Exhibition (ACE) in Pittsburgh. The Matson Award is given to the best AAPG paper presented at the Annual Convention and Exhibition, and is awarded the year after the paper is presented.

Allen, a geologist with Chevron in Bakersfield, was senior author of the winning paper with co-authors Dave Larue and Dale Beeson at the 2012 ACE in Long Beach, Ca.

The paper was titled "Improved Reservoir Characterization at Kern River Field, California, U.S.A.: New Insights into an Old Field Using 4-D Saturation Modeling."

STUDENT CHAPTER LEADERSHIP SUMMIT

The Pacific Section Student Chapter Leadership Summit (PS-SCLS) will be held November 16-17 in Bakersfield.

The Pacific Section Liaison with Student Chapters, Emily Fisher, is Coordinator for the event. She reports that many events are scheduled for the weekend. These events include 1) a workshop on how to start a chapter for schools that don't have an AAPG Student Chapter, 2) programs by local industry geologists and recruiting professionals that outline what to expect in a geology career and what companies look for when hiring new full-time and intern employees, 3) discussion of advantages of being involved with AAPG and its' programs such as the Imperial Barrel Award competition, and 4) a best practices discussion...what works and what doesn't in student chapters. Social activities are being planned as well. The students will be home hosted by local geologists.

SWITCH

The San Joaquin Geological Society Young Professionals coordinated and hosted a screening of the acclaimed energy documentary SWITCH in Bakersfield on October 23. The successful event was sold out...180 tickets...for the one-time screening at Edwards Cinemas. The screening was sponsored by Chevron.

SWITCH is a project of AAPG Past President Scott Tinker. SWITCH has been called the first truly balanced film on energy and energy future. Tinker is narrator and guide of a journey around the world that looks at how energy is generated and used. The film explores how a potential global energy transition would occur. The film is part of the SWITCH Energy Project, a film and web educational effort to build a balanced national understanding of energy and energy efficiency.



NOMINATIONS FOR PSAAPG TEACHER OF THE YEAR AWARD

March 1st, 2013 is the deadline for all our local societies to submit their candidate, or candidates, for the 2013 PSAAPG Teacher of the Year award. The winner will be acknowledged at the Monterey Convention in April and will also be submitted to National AAPG for their consideration. Both PSAAPG and National AAPG awards are accompanied with a monetary stipend. Candidates should be submitted to your local society or to Bob Ballog (bob@eaglexpc.com.)

Requirements

All applicants must adhere to the requirements below in order to be considered for TOTY:

- Minimum of 3 years full-time U.S. teaching experience at any K-12 level.
- Teaching at least one unit per year on natural resources. Natural resources are defined as earth materials used by civilizations past and present such as:
 - o Organic materials such as petroleum, natural gas, coal and oil shale.
 - o Inorganic substances found in the Earth such as mineral ores, building stone and aggregate.
 - o Energy resources from the Earth such as geothermal energy.
- Teaching should include the scientific study of these resources, their origin, discovery, extraction, and historic and present use. It should also include the preservation of the environment, reclamation, the conservation of resources, and the use of earth science knowledge in decision-making.
- The unit will be evaluated on depth and breadth of concepts (resource origin, discovery, processing, usage, and reclamation), creativity of presentation and balanced treatment of information regarding societal need and environmental issues. Please include the length of the unit.

Documents

1. Your teaching philosophy and methods of the teaching of natural resources (both content and pedagogy). Please limit to a two page document.
2. Description of the unit you teach. Limit to a two page document, please.
3. Letter of recommendation from a colleague.
4. Letter of recommendation from your administrator.
5. Entry form with name, address, telephone, school, current position, years of teaching, degree, subject areas, signature of applicant, signature of administrator, and local society.



Western US/US Land/Wireline Systems

Sales: +1 661.334.3800 | Fax: +1 661.334.3808

Operations: +1 661.765.2020 | Fax: +1 661.765.2150

<http://www.bakerhughes.com> | Advancing Reservoir Performance

2013 PSAAPG CONVENTION- Monterey, California

The 2013 SPE Western Regional / Pacific Section AAPG Joint Technical Conference is moving forward. The Conference is planned for April 19-25, 2013 at the Portola Hotel & Spa in Monterey, CA. The Conference Theme is **Energy & the Environment - Working Together for the Future**.

The Technical meeting will kick-off with an opening Icebreaker the evening of Sunday, April 21. Technical Sessions will begin April 22 and continue through April 24. Field Trips and Short Courses will be run prior to and after the Technical Meeting. We have an exciting set of technical sessions, field trips and short courses, in the planning phase (see pages 11-13). A great Technical Committee is working hard to bring you a good meeting. Feel free to contact Committee Chairs for more information. The Call for Papers is included in this Newsletter (see page 12). The Call for Sponsors and Exhibitors has also begun.

Planning for Activities, Luncheons, and Dinners is starting up this month. **Let us know what you/ your societies might need.**

Registration for the Conference will begin in late January, 2013.

Paul Henshaw - PSAAPG Conference Co-Chair



April 19-25, 2013
Pacific Section AAPG
Convention

Energy & the Environment
Working Together for the Future
Monterey, CA







www.psaapg.org
 © John Karachewski

2013 PSAAPG CONVENTION

Monterey, California



Committee

CO-CHAIR

PAUL HENSHAW - AAPG
Ph: (925) 673-8745
Cell: (925) 212-9492
Drphenshaw@comcast.net

TECHNICAL PROGRAM

TIM MCHARGUE - AAPG
Chair
Ph: 925-964-0740
Cell: 925-858-6510
timchargue@gmail.com

MED KAMAL - SPE

Chair
MKamal@chevron.com

JAKE COVAULT

Vice Chair
jakecovault@gmail.com

BILL BARTLING PCS-SEG

Vice Chair
Ph: 661-664-9702
bill.bartling@sr2020inc.com

ANDREA FILDANI - PS-SEPM

Co-Chair
afildani@gmail.com

FIELD TRIPS

STEFANO MAZZONI
Chair
Ph: (661) 869-8005
Stefano_Mazzoni@oxv.com

CO-CHAIR

LOUIS CASTANIER - SPE
Ph: (650) 723-2223
louis@stanford.edu

SPONSORSHIP

LARRY KNAUER
Ph: (661) 392-2471
FAX: (661) 392-2860
LarryKnauer@chevron.com

EXHIBITS

KEN PETERS
Ph: 415-383-3744
kpeters2@slb.com

OPERATIONS

MICHELLE GENTZEN
Ph: (918) 232-4141
michelle.gentzen@conferencedirect.com

SHORT COURSES

IVANO AIELLO - AAPG/SEPM
Co-Chair
iaiello@mml.calstate.edu

HERVE GROSS - SPE

Co-Chair
HGross@chevron.com

POSTER SESSIONS

DAN STURMER
Chair
Ph: 775-745-2909
sturmer.dan@gmail.com

Tentative Technical Program PSAAPG/PS-SEPM

- Reviving old giants and new potential in mature basins
- Evolving Models of Deep Water Deposition
- Fluvial and shallow-marine depositional systems: insights from outcrops and subsurface prediction
- Opening up the west: new and overlooked opportunities in unconventional reservoirs
- Faults, folds, transforms and terranes of Western North America
- Marine Geology of the Pacific Margin (modern and Ancient) -- dedicated to Bob Garrison
- Western North America earthquake hazards: what's shakin'
- Energy and the environment
- Landscape / Seascape Evolution
- California Turbidites
- What's new in the Sacramento Valley
- Geothermal Energy: A hot topic
- Arctic energy opportunities: from the Cook Inlet to the North Slope and beyond
- Sediment routing in Western North America
- Undergraduate Research Poster session



Tentative Field Trips

1. Hydrocarbon Migration Systems: Injectites, Bituminous Sands, and Gas Seeps
2. Retracing the Events of the 1906 San Francisco Earthquake and Fire
3. Convergent Margin Tectonics across Central California Coast Ranges -- Pacheco Pass
4. Oceanography Field Trip -- Moss Landing Marine Labs
5. Geology of the Point Lobos Reserve
6. Monterey Formation Outcrops
7. California Turbidites
8. Other

SPEWR/PSAAPG/PS-SEPM

Tentative Short Courses

1. Streamline simulation,
2. Numerical methods in simulation
3. Modern well test analysis,
4. Thermal methods and in-situ combustion,
5. Reserve booking
6. Carbon sequestration & storage
7. Sequence Stratigraphy for students
8. Carbonate Stratigraphy
9. Formation Evaluation
10. Image log interpretation
11. Geocellular modeling
12. Microseismic
13. Monterey core workshop
14. Monitoring programs for fracking

Updated Tentative Titles of Field Trips Currently Being Planned by PSAAPG and PS-SEPM

- The Monterey Formation in the Santa Lucia Area and Monterey Area
- Convergent Margin Tectonics across Central California Coast Ranges -- Pacheco Pass
- Fracture Characterization of Monterey Formation Outcrops at Montana de Oro State Park
- Oceanographic Research Laboratory Visits -- Moss Landing Marine Laboratory & Monterey Bay Aquarium Research Institute
- Introduction to the Geology of the Point Lobos Reserve
- Deepwater Turbidites of Central California: Pigeon Point and Point Lobos
- The Salinas Basin Petroleum System and Its Outcrop Expression, Central California
- San Andreas Fault / San Juan Bautista Mission -- Geology and Wine of Central CA

2013 PSAAPG CONVENTION

Monterey, California

Call for papers

CALL FOR PAPERS!

Joint PSAAPG / SPE / PSSEPM Conference – Monterey

April 19th – 25th, 2013 at the Portola Hotel & Spa (www.portalahotel.com)

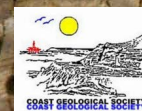
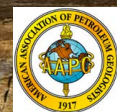
Energy & the Environment – Working Together for the Future

Sessions

1. Reviving Old Giants and Recognizing New Potential Mature Basins
2. Opening Up the West: New and Overlooked Opportunities in Unconventional Reservoirs
3. Sedimentary and Biogeochemistry of the Monterey Formation & Upwelling Sediments: a Session Dedicated to Bob Garrison
4. Contributions to the Geology of the Sacramento Valley
5. Arctic Energy Opportunities: from the Cook Inlet to the North Slope and Beyond
6. Geothermal Development in a Changing Energy Landscape
7. Energy and the Environment
8. Outcrop, Subsurface and Modern Seafloor Studies of California's Turbidite Systems
9. The Stratigraphic Architecture of Deep-Water Depositional Models
10. Fluvial and Shallow-Marine Depositional Systems: Insights from Outcrops and Subsurface Prediction
11. Western North America Earthquake Hazards: What's Shakin'?
12. Faults, Folds, Transforms and Terranes of Western North America
13. Sediment Routing in Western North America
14. Tectonics and Sedimentation on the Pacific Margin of North America: New Developments and Interpretations
15. Analysis and Modeling of the Dynamics of Coupled Seascapes and Landscapes
16. Undergraduate Research Poster Session

Submit Your Abstract NOW!

Submit your abstract to: psaapgabs@gmail.com and list what session you prefer and oral or poster. Deadline for submission is 1/15/13



© G. Hammel



DHISERVICES

Formation Evaluation Specialists

www.dhiservices.com

Les Collins

Regional Operations Manager

2202 Zeus Court
Bakersfield, CA 93308
Tel: +1 (661) 588-8310
Fax: +1 (661) 588-8322
Cell: +1 (661) 742-2720
Email: lcollins@dhiservices.com

GREGORY GEOLOGICAL SERVICES

Glenn J. Gregory

California Professional Geologist #3676

4800 Easton Drive, Suite 101
Bakersfield, CA 93309

(661) 633-5555
glenng@bak.rr.com



Photo courtesy of Andreas Mulch

Investing in Energy to Support Education and Research



“Today’s computational capacity and the availability of large volumes of data from ground-based observations and satellites offer new opportunities for understanding how the Earth system works and how human activities interact with Earth processes. The Stanford Center for Computational Earth and Environmental Science will enable the development of sophisticated models to address questions about energy and freshwater resources, natural hazards, climate change, and other global issues.”

Jerry M. Harris, Founding Director, Center for Computational Earth and Environmental Science, Professor and Former Chair, Department of Geophysics, Stanford University; Director, Stanford Wave Physics Laboratory; Past Distinguished Lecturer, Society of Exploration Geophysicists, American Association of Petroleum Geologists, and Society of Petroleum Engineers.

The alumni-managed Stanford Petroleum Investments Funds own, manage, and acquire producing oil and gas royalties and other energy investments. Income from these investments provides essential discretionary funding in support of energy and environmental education and research and other programs of the Stanford School of Earth Sciences. The Petroleum Investments Funds provided seed funding to help launch the Stanford Center for Computational Earth and Environmental Science.

If you would like to sell or donate producing oil and gas royalties or learn more, visit <http://earthsci.stanford.edu/alumni/support/pif> or call or email David Gordon, Executive Administrator, Petroleum Investments Committee, Stanford School of Earth Sciences, at (650) 723-9777 or dsgordon@stanford.edu to see how you can help.



WEST COAST STUDENT EXPO A HUGE SUCCESS

The fifth annual AAPG-SEG West Coast Student Expo took place at California State University, Northridge on 11 to 13 October 2012. Nine companies and one federal agency sponsored the event: Aera Energy, Chevron, and Occidental, at the Platinum Level; ConocoPhillips at the Gold Level; and Bureau of Safety and Environmental Enforcement, DCOR, Devon, Microseismic, Venoco, and Weatherford at the Silver Level. The Pacific Section of the American Association of Petroleum Geologists (PSAAPG) and Society of Exploration Geophysicists (SEG) were additional sponsors.

There were 160 registrants for in the Expo: 53 Bachelor's, 89 Master's and 18 Doctoral students. This was an increase of ~50% over attendance at the 2011 event, with students hailing from 38 schools in 13 states and 3 countries: Arizona State; Brigham Young Univ.; Cal Poly Pomona; CISESE; California State Univ., Bakersfield; California State Univ. Fresno; California State Univ., Fullerton; California State Univ., Long Beach; California State Univ., Northridge; California State Univ., Sacramento; Heriot Watt Univ.; Indiana Univ.; Kansas State Univ.; Lehigh Univ.; Occidental College; Ohio Univ.; Oxford Univ.; San Diego State Univ.; San Francisco State Univ.; Southern Illinois Univ.; Texas A and M Univ.; Univ. of California, Berkeley; Univ. of California, Irvine; Univ. of California, Los Angeles; Univ. of California, Riverside; Univ. of California, Santa Barbara; Univ. of California, San Diego; Univ. of California, Santa Cruz; Universidade do Rio Grande do Sul Brazil; Univ. of Nebraska, Lincoln; Univ. of Nevada, Las Vegas; Univ. of Nevada, Reno; Univ. of Pennsylvania; Univ. of South Carolina; Univ. of Twente, The Netherlands; Univ. of Southern California; Univ. of Texas, San Antonio; Univ. of Utah; and Utah State Univ.

On Thursday October 11, Occidental Petroleum sponsored a field trip to their THUMS facility in Long Beach, CA led by Rebecca Greenberg and others. Dan Schwartz and others from Aera Energy led another trip to the eastern Ventura Basin. Forty-five participants and company representatives were on each field trip.

Later that evening, both Aera Energy and Occidental Petroleum hosted a poster session and wine and cheese mixer. Fifty students registered for the poster session. Posters were judged by a group of company representatives headed by Tony Reid of Occidental Petroleum, who is also President of Pacific Section AAPG. Awards were donated by the AAPG, PS-AAPG and SEG. The winners were:

Geology BS:

Samantha Gebauer, UCLA, Eruption and Crystallization Ages for the Breccia Museo Supereruption Deposit

Geology MS:

1) Martha Ahlstrom, CSU Northridge, Post-Station Fire Debris Flow Analysis in the San Gabriel Mountains

2) Julia Johnson, University of Nevada, Reno, Investigation of a commercially available high temperature carbon reduction instrument for the analysis of stable oxygen isotopes in silicates, oxides and biogenic silica

Geology PhD:

David Haddad, Arizona State University, Integrating Lidar, Geomechanical Modeling, and Multispectral Remote Sensing to Understand Coseismic Fault Behavior and Mechanics

Continued on Page 15

Geophysics MS:

Lennin Escobar, CSU Northridge, Rayleigh phase velocities and azimuthal anisotropy of the upper mantle of the Pacific-North American plate boundary in Southern California.

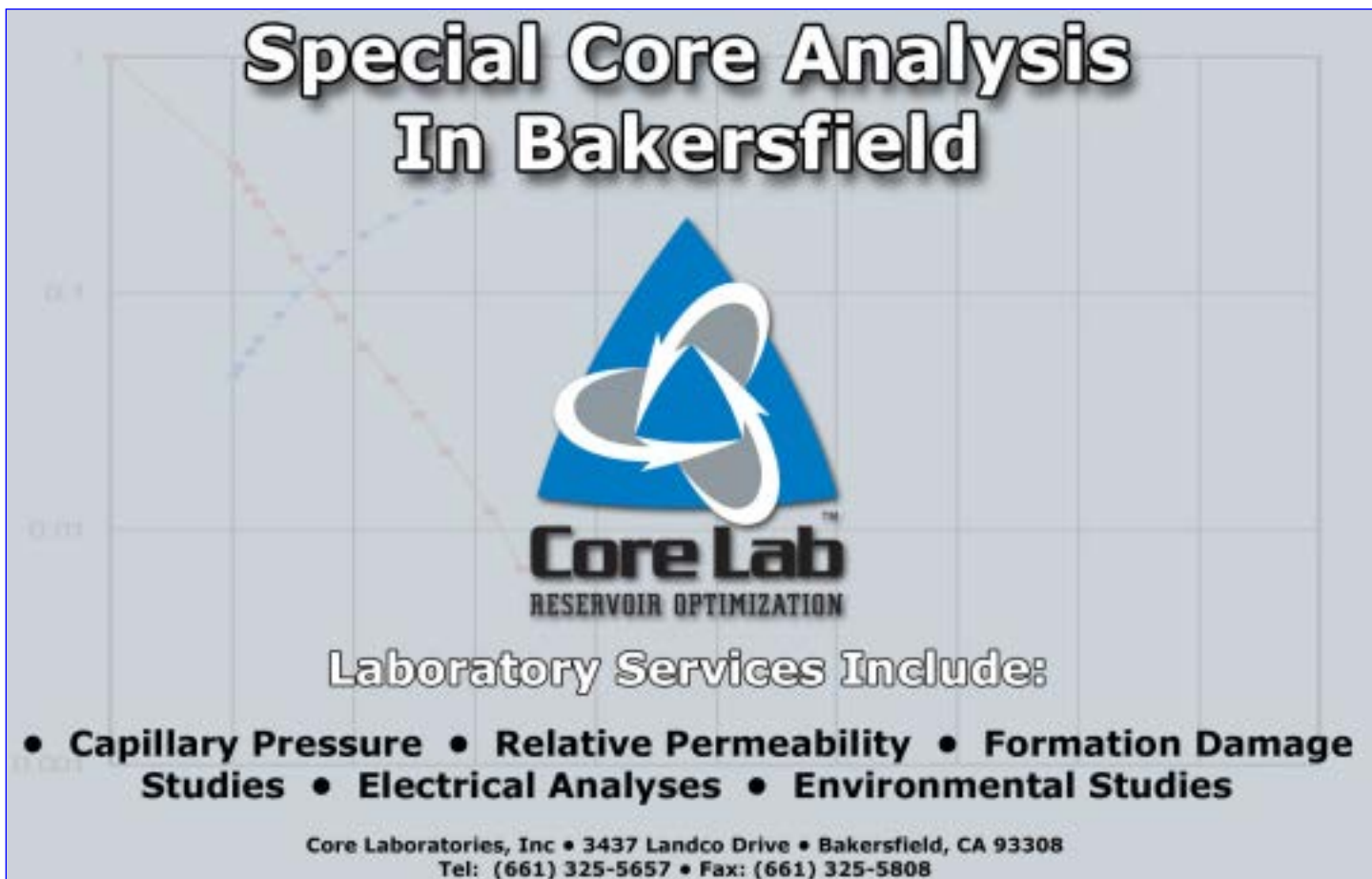
Geophysics PhD:

Xiaowei Chen, UC San Diego, Microseismicity in the Salton Trough: what can we learn about the geothermal reservoir?


On Friday 12 October, the companies set up their booths in the Grand Salon. That morning, ~60 students attended an SEG-sponsored short course entitled "Microseismic Monitoring – Methods and Interpretation." presented by Mike Mueller of Microseismic, Inc. Students and company representatives then attended a Chevron-sponsored luncheon and round-table discussion from 11:30-2:30pm where Tony Reid announced the poster session winners. Luncheon seating around large round tables facilitated company representative interaction with students. Company representatives addressed the students to highlight their companies' hiring needs. At set intervals, company recruiters switched tables to maximize interaction with students. Afterwards, from 2:30 to 5:30pm, students and representatives continued to interact at the Company Booth Exposition. Saturday October 13rd the last day of the Expo, was dedicated to student interviews with the companies from 8:00 am-6:00 pm. The companies made all of the arrangements for interview times with students prior to Saturday. All interviews occurred in rooms at the CSUN University Student Union.

Mark your calendars for next year!

The 2013 AAPG-SEG West Coast Student Expo is scheduled for 3 to 6 October at the University Student Union, California State University, Northridge.



**Special Core Analysis
In Bakersfield**



Core Lab
RESERVOIR OPTIMIZATION

Laboratory Services Include:

- Capillary Pressure • Relative Permeability • Formation Damage Studies • Electrical Analyses • Environmental Studies

Core Laboratories, Inc • 3437 Landco Drive • Bakersfield, CA 93308
Tel: (661) 325-5657 • Fax: (661) 325-5808

Alaska Geological Society

- November 15th General Meeting: "Development of an Integrated Oil Spill Research Center at UAF- Innovative Interdisciplinary Research that Matters to Alaskans;" Speaker: Dr. Mark Myers, University of Alaska, Fairbanks
- December 13th General Meeting: "Unconventional Oil Reservoirs on the North Slope of Alaska;" Speaker: Ed Duncan, Great Bear Petroleum

Coast Geological Society

- November 20th General Meeting: "The Co-Evolution of the Geosphere and Biosphere;" Speaker: Robert Hazen, Research Scientist at the Carnegie Institution of Washington's Geophysical Laboratory and Clarence Robinson Professor of Earth Science, George Mason University
- December 18th General Meeting: "Using Laser Scanning Technology to Evaluate Coastal Erosion and Sea Cliff Retreat in Southern Santa Barbara County;" Speaker: Eva E. von Thury, Fugro Consultants
- 2013 Wine Tasting Event being planned

L.A. Basin Geological Society

- No November or December general meetings planned due to holidays

Northern California Geological Society

- November 28th General Meeting: "Lassen Volcanic National Park- a Wonderland of Volcanoes and Thermal Features;" Speaker: Dr. Patrick Muffler, USGS (emeritus)
- No December meeting due to holidays

Northwest Energy Association

- November 9th General Meeting
- December 14th General Meeting

Sacramento Petroleum Association

- No November or December activities planned due to holidays

San Joaquin Geological Society

- Society sponsors screening of "Switch."
- November 13th General Meeting: "Crustal Block Rotations in Transtensional Basins and Transpressional Zones - Inhomogeneity and Evolution with Time;" Speaker: Dr. Chris Pluhar, Fresno State
- December 11th General Meeting: "The Bakken Shale Play;" Speaker: Rob Sterling, Cirque Resources LP



SCOTT M. MOSSMAN
SENIOR GEOPHYSICIST
GRAVITY & MAGNETIC CONSULTING

(303) 875-2360
scmossman@gmail.com
www.smgmconsulting.com

610 Santa Monica Blvd. 203
Santa Monica, CA 90401

Ralph J. Goehring, CEO



Your outsource accounting solution.

Outsource your oil and gas accounting to us.
Specialists in energy and pre-IPO accounting.

(661) 952-7789 www.SandDollarOutsource.com

Alaska Geological Society

www.alaskageology.org

P. O. Box 101288
Anchorage, AK 99510

Contact: Tom Morahan
907.230.1672



Luncheon meetings are held monthly September through May, usually on the third Thursday of the month, at the BP Energy Center (1014 Energy Court) from 11:30 a.m. to 1:00 p.m. The hot lunch cost is \$20 for members with reservations; \$22 for non-members with reservations; and \$25 without reservations. The box lunch cost is \$13 for members with reservations, \$15 for non-members with reservations, and \$18 without reservations. For reservations, call the AGS reservation voice mail at 907-258-9059 or contact David Hite at hiteconsult@acsalaska.net by noon on Monday before the meeting.

President:	Ken Helmold	907.269.8673	ken.helmold@alaska.gov
President-Elect:	Steve Wright	907.263.7865	Sswr@chevron.com
Vice-President:	Dick Garrard	907.244.1067	Rgarrard@talisman-energy.com
Secretary:	Chad Hults	907.786.7417	chults@usgs.gov
Treasurer:	Alan Hunter	907.263.7947	alhunter@chevron.com
Past-President:	Tom Morahan	907.230.1672	tmorahan@petroak.com

Coast Geological Society

www.coastgeologicalsociety.org

P. O. Box 3055
Ventura, CA 93006

Contact: Ed Magdaleno
805.535.2086



Dinner meetings are held monthly September through May, usually on the third Tuesday of the month, at the Poinsettia Pavilion, 3451 Foothill Road in Ventura. Social hour starts at 6:00 p.m., dinner is served at 7:00 p.m., and the talk starts at 8:00 p.m. The cost of dinner with reservations is \$20 (members), \$25 (non-members), or \$10 (students and K-12 teachers); the talk is free. For reservations, please email Jerry Nichols (secretary@coastgeologicalsociety.org). Reservations should be made by 4:00 p.m. on the Friday before the meeting.

President:	Ed Magdaleno	805.535.2086	president@coastgeologicalsociety.org
Past President:	John Harris		pastpresident@coastgeologicalsociety.org
Vice President:	Robert Dame		vicepresident@coastgeologicalsociety.org
Secretary:	Dion Lobreau		secretary@coastgeologicalsociety.org
Treasurer:	Peter Morris		treasurer@coastgeologicalsociety.org

Los Angeles Basin Geological Society

www.labgs.org

515 So. Flower Street, Ste 4800
Los Angeles, CA 90071

Contact: Bill Long
213.225.5900 x 205



Luncheon meetings are held monthly September and October; and January through June, usually on the fourth Thursday of the month, in the Monarch Room at The Grand at Willow Street Conference Centre (4101 E. Willow Street) in Long Beach. Lunch is served at 11:30 a.m., and the talk starts at 12:15 p.m. The cost is \$20 (with reservations), \$25 (without reservations), or \$5 for students. Reservations can be made online at www.labgs.org or by contacting Marieke Gaudet at 562.624.3364 or marieke_gaudet@oxy.com. Reservations must be made prior to Tuesday before the meeting.

President:	Bill Long	213.225.0205	william.long@breitburn.com
Vice President:	Jean Kulla	949.500.3095	k2mobile@.com
Treasurer:	Bert Vogler		hvogler@kleinfelder.com
Secretary:	Graham Wilson		Gwilson@SHPI.net

Northern California Geological Society

www.ncgeolsoc.org

9 Bramblewood Court
Danville, CA 94506-1130

Contact: Barb Matz
Barbara.Matz@shawgrp.com



Evening meetings are held monthly September through May, usually on the last Wednesday of the month, at the Masonic Center (9 Altarinda Road) in Orinda. Social hour starts at 6:30 p.m., and the talk starts at 7:00 p.m. (no dinner). For reservations, contact Dan Day at danday94@pacbell.net before the meeting. Cost is \$5 per regular member; \$1 per student member; and \$1 per K-12 teachers.

Northwest Energy Association
www.nwenergyassociation.org

P. O. Box 6679
Portland, OR 97228-6679

Contact: Tim Blackwood
503.656.0156



Breakfast meetings are held monthly September through May, usually on the second Friday of the month, at the Multnomah Athletic Club (1849 SW. Salmon Street) in Portland. Meeting time is at 7:30 - 9:00 am. The cost is \$18. For information or reservations, contact Steve Walti.

President	Tim Blackwood	tblackwood@pacificgeotechnicalllc.com
Treasurer	Steve Walti	steven.walti@nwnatural.com

Sacramento Petroleum Association

P. O. Box 571
Sacramento, CA 95812-0571

Contact: David Hartley
530.304.4277



Luncheon meetings held monthly January through November, on the third Wednesday of the month. Location: Club Pheasant Restaurant in West Sacramento. The meetings starts at noon. The cost is \$16 - \$20. For information or reservations, contact Pam Ceccarelli.

President:	Jerry Reedy	916.486.2643	JWR5532@aol.com
Vice-President:	David Hartley	530.304.4277	drilmax1@aol.com
Secretary	Derek Jones	916.859.4710	djones@gasbiz.com
Editor/Treasurer	Pam Ceccarelli	916.439.0400	pc626@comcast.net

San Joaquin Geological Society

www.sanjoaquingeologicalsociety.org

P. O. Box 1056
Bakersfield, CA 93302

Contact: Jeff Gartland
Jeff_Gartland@oxy.com



We have dinner meetings on the second Tuesday of the month at the American Legion Hall at 2020 "H Street" in Bakersfield. There is an icebreaker at 6:00 pm, dinner at 7:00 pm, and a talk at 8:00 pm. Dinner is \$25.00 for members with reservations and \$30.00 for nonmembers and members without reservations, and the talks are free.

President:	Jeff Gartland	Jeff_Gartland@oxy.com
Past President:	Tim Elam	kyrocks@peoplepc.com
President-Elect:	Laura Bazeley	lbazeley@wziinc.com
Vice-President:	Vaughn Thompson	vaughn_thompson@oxy.com
Secretary:	Emily Fisher	EAFisher@aeraenergy.com
Treasurer:	Kathy Smith	kathysmith@pacseis.com

- Images (graphics, photos, and scans) must be at least 300 dpi resolution. Text should be scanned at least 600 dpi.
- Scanned photos, illustrations (line art) or logos must be scanned at 300 dpi minimum and saved as a tiff or eps.
- Avoid clip-art and images from the internet. These images are low-resolution (72 dpi).

Advertising Rates

Members	Single Issue	Year (6 issues)
Full Page	\$400.00	\$1600.00
Half Page	\$250.00	\$1050.00
Quarter Page	\$150.00	\$650.00
Business Card		\$250.00

Societies Free Advertising

Convention Societies	Unlimited Space 1/4 Page	PSAAPG Newsletter AAPG Explorer
----------------------	-----------------------------	------------------------------------

Newsletter Deadline

January & February Issue

January 1st

2012 SPRING/SUMMER ACTIVITIES of LABGS

The Los Angeles Basin Geological Society (LABGS) has had an active last few months beginning with our luncheon meeting in late May. Michael S. Johnson gave us a great presentation of the discovery of the Parshall Field in the Bakken Shale of North Dakota. The Parshall Field is the largest oil field in size in North America covering over 100 miles in length and three million acres. Producible reserves exceed 10 billion barrels and are still increasing.

Mr. Johnson, (***pictured below left with President Bill Long***), has previously received the AAPG Outstanding Explorer Award and the AAPG Award of Excellence Top 10 Oral Presentation in 2009.



Also at the May LABGS meeting the Teacher of the Year (TOTY) from PSAAPG and LABGS was awarded to Wendy Van Norden (***pictured above right between Karla Tucker and Bill Long.***) Ms. Van Norden, in collaboration with UCLA, created an advanced placement geology/earth science course for California High School students. The course, which she teaches, is accepted for college credit for students interested in further pursuing geology in college. According to Ms. Van Norden, one of the biggest impediments to more students taking the advanced placement geology course in LA High Schools is the lack of money for the text books.

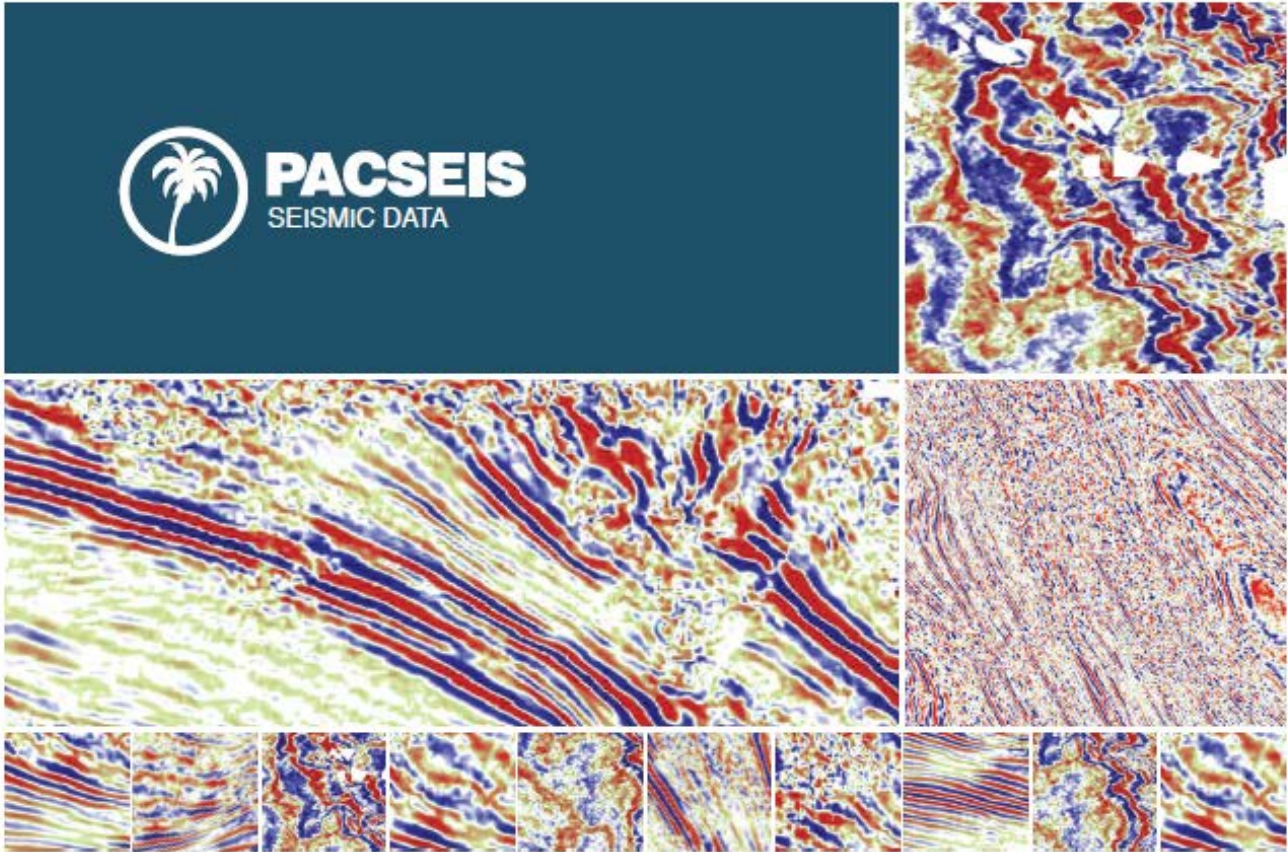


Capping off the summer, Don Clarke (***holding display above right***) and Brady Barto (***next to bronze statue above left***) lead a 'walk about' around Signal Hill and Discovery Park. The well-attended event included discussion of the history of the LA Basin oil fields and urban land use of the Signal Hill area. A picnic, sponsored by Signal Hill Petroleum, was held at Hill Top Park. Barto is Signal Hill's Exploration Manager and grandson of the founder of Signal Hill Petroleum.



PACIFIC SECTION AAPG
P. O. Box 1072
BAKERSFIELD, CA 93302

PRESORTED
STANDARD
U.S. POSTAGE PAID
BAKERSFIELD, CA
PERMIT NO. 1163



PACIFIC SEISMIC COMPANY

The leader in subsurface information

RESOURCES THAT DELIVER THE DIFFERENCE

- One of the largest seismic databases available for license
- Seismic available for immediate license
Over 500,000 line miles of 2D data located in domestic United States (onshore & offshore)
- 2,500 square miles of 3D surveys

RECENTLY ACQUIRED SEISMIC DATABASES BY PACIFIC SEISMIC CO.

- Chevron USA California, OXY USA Nationwide (including Arco & Enron)
- Santa Fe energy, TXO, Cities Service Oil & Gas Nationwide
- Southern Pacific, PG&E/ NGC, SOHIO

PACIFIC SEISMIC COMPANY | Your Full-Service Seismic Brokerage & Acquisition Company

EXPLORATION CONSULTING

PROSPECT FINANCING

PROJECT DEVELOPMENT

Tel (661) 322-1171 | Fax (661) 322-1181 • www.pacseis.com | Bakersfield | Houston | Denver