



Pacific Petroleum Geology



NEWSLETTER

Pacific Section • American Association of Petroleum Geologists

September & October 2012



Back to School

Get More from your Core



With reservoirs becoming increasingly complex, you need the most accurate information you can get to better understand your reservoir.

Weatherford Labs helps you get more from your core by combining an unsurpassed global team of geoscientists, engineers, technicians and researchers with the industry's most comprehensive, integrated laboratory services worldwide. From core analysis, sorption, geochemistry and isotopic composition to detailed basin modeling and comprehensive data packages, we provide you with real reservoir rock and fluid information that hasn't been distilled by a simulator or iterated by software.

We call it "The Ground Truth™" – giving you the accurate answers you need for better reservoir understanding. You'll call it a better return on your reservoir investment. To learn more, contact TheGroundTruth@weatherfordlabs.com.



2012-2013 OFFICERS

| | |
|---------------------------|--|
| President | Tony Reid 661.412.5467 president@psaapg.org |
| President-Elect | Dan Schwartz 661.665.5832 president-elect@psaapg.org |
| Vice President | Jana McIntyre 661.869.8231 vice-president@psaapg.org |
| Secretary | Becca Lanners 562.495.9310 secretary@psaapg.org |
| Treasurer 2011-2013 | Jennifer Anderson 661.363.3226 treasurer@psaapg.org |
| Treasurer 2012-2014 | Jack Grippi 661.665.5061 treasurer@psaapg.org |
| Past President | John Minch 805.898.9200 president@psaapg.org |
| Editor-in-Chief 2012-2014 | Tim Elam 661.378.6790 editor@psaapg.org |

STAFF

| | |
|--|--|
| Web Master | Bob Countryman 661.589.8580 webmaster@psaapg.org |
| Membership Chair | Evan Bargnesi 661.859.9713 membership@psaapg.org |
| Publications Chair | Larry Knauer 661.392.2471 publications@psaapg.org LarryKnauer@chevron.com |
| Advisory Council Representative 2012-2014 | Jon Schwalbach 805.648.8518 JRSchwalbach@aeraenergy.com |

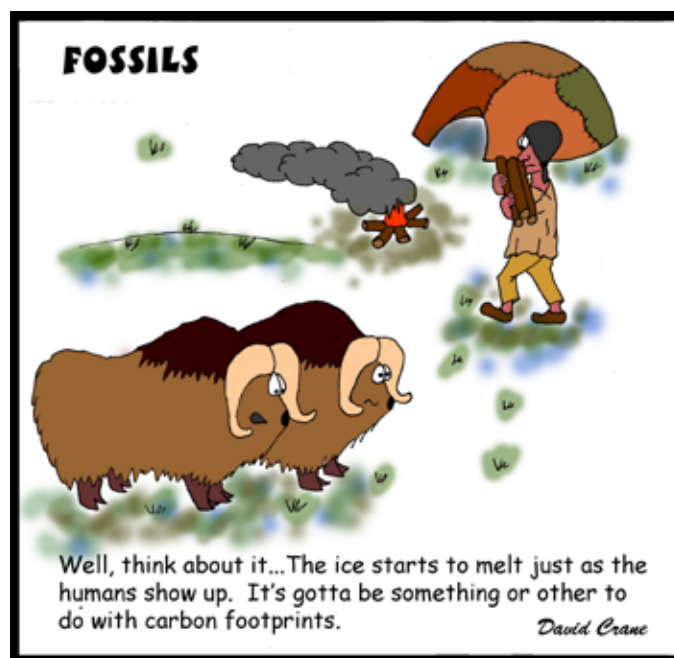
Cover Photo: Field trip to the Ridge Basin, Southern California. Photo provided by the editor.

EVERY ISSUE

- 4 Message from the President • T. Reid
- 5 Editor's Corner • T. Elam
- 6 PSAAPG News
- 10 Publications
- 11 Member Society News

THIS ISSUE

- 6 AAPG Young Professionals Leadership Summit • E. Bargnesi
- 8 Summary of AAPG Leadership Days • R. Lindblom





The summer is historically quiet for the Pacific Section and the societies. That is true across the country, and AAPG takes advantage of this down time to schedule their Leadership Days retreat. Several Pacific Section members including President-Elect Dan Schwartz, Advisory Council member Jon Schwalbach, AAPG president candidate Kay Pitts, Membership Chair Evan Bargnesi (representing the Section's Young Professionals), Honors and Awards Chair Bob Lindblom, Stefano Mazzoni of the San Joaquin Geological Society, and myself had an opportunity to attend this year's meeting in Tulsa. At Leadership Days, AAPG brings together all the presidents from the Sections and Regions, as well as the AAPG officers, candidates and headquarters management. Also attending are Student Chapter and Young Professional representatives from around the world.

The result is an interesting mixture of the old guard and the younger members who will inherit the organization. The purpose of the meeting is to learn about issues affecting AAPG, as well as AAPG's activities and plans. It is also a chance to meet representatives of other sections, and to learn about their activities and plans. One idea I thought intriguing was the development of a "rock atlas" for key reservoirs. With all of our outcrops, and our rich reservoir literature, this may be a project appropriate for the Pacific Section to pursue. If any of you are interested in helping develop this idea, please contact me or the Publications Chair, Larry Knauer.

At this year's meeting there was an impassioned plea by an international member for increased representation for overseas members in the AAPG governance. This is a sore subject for many of the domestic Section officers and members who are concerned about changing representation within the AAPG organization. I'm not too concerned about this affecting the Pacific Section because we have our own constitution and by-laws, and we control the fate of our organization. However, the best thing we could do to ensure our continued independence is to show that we are an active and engaged Section, working closely with our affiliated Societies. This should include continuing conventions that address timely issues, sponsoring field trips and short courses that serve and educate our membership, and maintaining healthy membership levels. A step you can take now is to ask the geologists you know if they are members of AAPG and the Pacific Section. If they are not, send them a link to the Membership sections of the AAPG and Section webpages.

Pacific Section attendees at the AAPG Leadership Days (Post Oak Lodge, Tulsa, OK). From Left: Hannah McKay, Tony Reid, Bob Lindblom, Jon Schwalbach, Evan Bargnesi, Stefano Mazzoni, Kay Pitts, and Dan Schwartz.



Hello, I'm Tim Elam, the new PSAAPG Editor. I want to thank outgoing Editor Ed Washburn for his work over the past 2+ years as Editor, plus assisting me with transition. Yes, Ed served 2-PLUS years as Editor. Ed put together the July-August Pacific Petroleum Geologist newsletter and nearly all of this Sept/October edition. I spent an enjoyable summer as an Interpretation Volunteer at Petrified Forest National Park in northeastern Arizona. It would have been impossible to start my editor job from Arizona.



I want to encourage newsletter input from each of our PSAAPG societies. The electronic avenues for information transfer continue to revolutionize communication. I want to be sure the activities of you and your societies are captured, communicated, and celebrated. So, you can send them to me at EDITOR@PSAAPG.org or my personal e-mail kyrocks@peoplepc.com.

J.M. "BUZZ" DELANO, JR.
Consultant

Cell (661) 747-0337
Office (661) 832-5229
Fax (661) 832-5229
Email: BuzzBake@aol.com

Delano Petrophysical Consulting Services

816 Ferdinand Ct.
Bakersfield, California 93309

Dipmeter Analysis
Tape Conversion Editing
Expert Petrophysical Analysis
Wellsite Supervision

Marty Hall
US Marketing / Sales Manager

7765 Windwood Way
P.O. Box 549
Parker, CO 80134
USA

P: 720.851.6152
C: 303.885.8860



geokinetics.com

marty.hall@geokinetics.com

FORT DAVIS PALEONTOLOGIC & STRATIGRAPHIC CONSULTANTS

William G. Reay

112 Arabella Dr
Fort Davis, TX, 79734
432.426.2443

wgreay@mztv.net

Age dating and environmental determinations of the LA Basin, the Ventura Basin, the San Joaquin and Sacramento sections, as well as the Alaskan Cook Inlet and Post Paleozoic North Slopes section

When I arrived in Tulsa, OK for the Young Professionals Leadership Summit, I was not sure I had ever left Bakersfield. The airport was decorated with pumpjacks and pipelines, aging testaments to Tulsa's booming oil industry of days past. Stepping outside only reinforced the comparison to Bako. I smoldered in staggering heat for about 10 minutes before deciding to wait inside for the next 20 minutes for the hotel shuttle. While waiting, I stood with the Canadian Young Professionals representative, which is when my Leadership Days experience began. As I boarded my final flight home while talking with students and professionals I had met in Tulsa, it seemed that the experience had concluded. As I am sitting here fielding messages from those I met, I can say with certainty that my experience with AAPG is just beginning.

The interfacing between the students and the young professionals was probably the most valuable, if also the most entertaining, aspect of the Leadership Summit. The students gained insights about their futures, while the YPs gained understanding about how to retain them in our ranks as they complete their final rites of passage. The students provided fresh ideas and outlooks on AAPG, while the YPs tapped them for insights, sharing and improving ideas on how to maintain relevance. Most importantly, we had time to exchange pleasantries before joining up with the OPs (Old Professionals) at the Post Oak Lodge. Funny enough, this exchange of pleasantries is one of the key benefits to becoming an AAPG YP. It is a time with which we can engage peers in a relaxing setting about science and beyond before setting out to prove ourselves among the OPs. This networking and information sharing is a vital function due to the generation gap, which can make socializing and transferring knowledge between the bimodal age peaks challenging.

From speaking with OPs and YPs alike, it is apparent there are many obstacles to continued prosperity of AAPG, more so than I was aware of before attending Leadership Days. These issues, including YP member retention, integration with the internet, and the globalization of AAPG, will need to be faced in upcoming years and it will be largely the YPs who tackle them. Our YP generation is fast-moving and high-energy, demanding flexibility and agility from planning to execution. We are highly motivated and eager to support our science and advance our craft. And although our preference for streamlined bureaucracy, swift mobilization of resources, and knowledge sharing will occasionally cause friction amongst the OPs, we are determined to work as a team while respecting the knowledge and experience of our elders.

At the end of the day, it is clear that AAPG has set the gold standard for professional geologic societies. It is dedicated to maintaining the state of the science and the status of the industry with whatever ability possible. AAPG is especially crucial in student development, recruitment, and placement. We need to realize its importance to the young professionals, as well. The reverse is also true: as a YP in the Petroleum Geology business, we should all feel a duty to give back to the society that has given us so much as students, and pay that debt forward for future generations.

Be at the Epicenter...

AAPG-SEG

**West Coast
Student Expo**



11-13 October 2012

**California State University,
Northridge**

***Student poster presentations, company
interviews, networking, field trips, and more...***

***Interested Companies and Students see:
www.csun.edu/geology/aapg-seg.htm
for registration information***

Summary of AAPG Leadership Days, Tulsa, OK, August 10-12, 2012

The AAPG 32nd Annual Leadership Days were held August 10-12, 2012 at the Post Oak Lodge located 10 miles west of Tulsa in the Osage hills. The theme of the meeting was "Reassessing Petroleum Geosciences." There were 115 in attendance from around the world representing Association Sections, Divisions, Regions, Committees, Young Professionals, and Students. There were also 21 Staff people from the AAPG Tulsa Headquarters to help with registration and overall organization of the "Days."

During the Conference the AAPG Advisory Council and the Executive Committee also met to address various Association concerns.

On Friday lunch was served to attendees followed by a tour and orientation of the AAPG Headquarters in downtown Tulsa. In the late afternoon the attendees then assembled at the Post Oak Lodge for the welcome and dinner followed by a social reception. The Post Oak Lodge is an excellent venue for the conference, with housing in various buildings close by the main lodge where the social events and related leadership meetings are held, plus a superb dining facility.

Following breakfast the Saturday morning session was called to order by David Curtis, Executive Director of AAPG, with introduction of the attendees and remarks by AAPG President Ted Beaumont and House of Delegates Chair, Randy Ray. During lunch the AAPG Officer Candidates for 2013 gave their presentations. Our Pacific Section Kay Pitts is a candidate for President-Elect and gave an excellent 5 minute talk on herself, her AAPG background, and related goals and challenges for AAPG.

In the afternoon there were four different Focus Groups which attendees signed up to attend including "The Association Role in Scientific Breakthrough," "Pore Systems in Fine-Grained Rocks," "Economics of Resource Plays," and "Delineating Prospects using Seismic Attributes." These sessions lasted the afternoon and were followed by a social reception and dinner. Following dinner the annual casino night with many types of gambling opportunities (with play money) took place in the lodge.

Sunday morning following breakfast the General Session was held with remarks by President Ted Beaumont and David Curtis. The four focus groups then gave their reports through Power Point of their Saturday meetings. A Strategic Plan discussion followed with closing remarks by President Ted Beaumont. Lunch was then served and the 2012 Leadership Days was officially concluded.

Copies of the Power Point presentations of the Focus Groups are available through AAPG.

Bob Lindblom, HOD Delegate, Northern CA Geological Society



GEOLOGICAL LOGGING INC.
9229 Beatty Drive, Suite B
Sacramento, CA 95826
Telephone 916-452-9570
Cell 952-8975 Fax 452-9573
geolog@sbcglobal.net

ERNIE BURROUGHS
President/Owner
Registered Geologist No. 1628



RESERVOIR CHARACTERIZATION
GEOLOGY
PETROPHYSICS
DATABASE MANAGEMENT
DIGITIZING & SCANNING

EarthQuest Technical Services, LLC

David R. Walter

drwalter@eqtservices.com
www.eqtservices.com

2201 'F' Street
Bakersfield, CA 93301
661-321-3136

PAYZONE INC.

Geological, Geophysical, and Petrophysical Consulting Services for the Petroleum Industry 661-387-1715

Technical Training Courses

Working with Ancient Electric Logs October 2, 2012, Bakersfield, CA

Shaly Sand Log Analysis in California: Practical Methods for Accurate Reservoir Properties

October 23-25, 2012, Bakersfield, CA

For more information about these courses please contact Deborah or Tom or visit our website

Deborah Olson, President
dmolson@payzoneinc.com
661-747-0375

Now Offering Image Log Interpretation Services!

www.payzoneinc.com

Tom Howard, Image Analyst
tomh@payzoneinc.com
832-407-2862

Special Core Analysis In Bakersfield



Core Lab
RESERVOIR OPTIMIZATION

Laboratory Services Include:

- Capillary Pressure • Relative Permeability • Formation Damage Studies • Electrical Analyses • Environmental Studies

Core Laboratories, Inc • 3437 Landco Drive • Bakersfield, CA 93308
Tel: (661) 325-5657 • Fax: (661) 325-5808



PETROLOG

PETROLOG, INC.
JOHN T. WILLIAMS
Geologist, P.G. #5899, President

Geological Well Logging

P.O. BOX 7028
VENTURA, CA 93006
jtw@petrolog-geological.com

(805) 642-2847 • Fax (805) 980-5569 • Cell (805) 231-3793

GREGORY GEOLOGICAL SERVICES

Glenn J. Gregory

California Professional Geologist #3676

4800 Easton Drive, Suite 101
Bakersfield, CA 93309

(661) 633-5555
glenng@bak.rr.com

Stanford University Geologic Studies of the San Joaquin Basin, 1980-2010

Stephan A. Graham, W.J. and M.L. Crook Professor
School of Earth Sciences, Stanford University, Stanford, California

The dissertations reproduced on this DVD largely predate the digital era, so many have been scanned from original hard copies of variable states of preservation; as a result, the quality varies in this product. The original dissertations are on file and accessible to the public at Branner Earth Sciences Library, School of Earth Sciences, Stanford University. Scans for this DVD derive from two sources. Some were produced as part of a program at Stanford to digitize all older dissertations, with thanks to Julie Sweetkind-Singer, (Acting Head Librarian) and her staff at Branner Library, for facilitating access to previously scanned dissertations. However, the majority of the dissertations in this collection were scanned pro bono by PayZone, Inc. of Bakersfield, thanks to the considerable efforts of Deborah Olson and her colleagues. Larry Knauer, Pacific Section AAPG, encouraged and facilitated production of the DVD. Ultimately, principal credit for this compilation goes to Deborah Olson, who first suggested the idea of this DVD in order to facilitate greater public access to these dissertations, because most were previously unpublished or published in regional publications of limited circulation. This body of research would not have been possible without the support of the San Joaquin Project consortium member companies, which over time included: Amerada-Hess, Amoco, Arco, BP Alaska, Champlin, Chevron, Cities, Conoco, Exxon, Getty, Gulf, Husky, Marathon, Mobil, Natural Gas Corp, Occidental, Phillips, Santa Fe Energy, Shell, Sohio, Superior, Tenneco, Texaco, and Unocal.

A 2-DVD set containing the information described above may be purchased from the Pacific Section American Association of Petroleum Geologists (PSAAPG) Publications Committee for \$50.00 by contacting (and including a check or credit card information and a shipping address)

PSAAPG Publications
P.O. Box 1072
Bakersfield, CA 93302

or

Larry Knauer (Publications Chair)
larryknauer@chevron.com
661-392-2471



Western US/US Land/Wireline Systems

Sales: +1 661.334.3800 | Fax: +1 661.334.3808

Operations: +1 661.765.2020 | Fax: +1 661.765.2150

<http://www.bakerhughes.com> | Advancing Reservoir Performance

Headline News

Alaska Geological Society

September 20- First Fall Meeting, Speaker Jim Markello- The Lisburne Oil Field

Coast Geological Society

Society Donates \$6000 in Scholarship Funds to Local Colleges

Fall Golf Tournament Scheduled for October in Ojai

L.A. Basin Geological Society

September 27 Meeting- Speaker Dr. Donald Prothero: Magnetic Stratigraphy of the Pacific Coast Cenozoic

Northern California Geological Society

Upcoming Meetings: September 26, October 24

Northwest Energy Association

Looking for Officers and Company Sponsorships

Sacramento Petroleum Association

September 27 Meeting- Speaker Robert Bridges: Re-Discovering California: The Gunslinger Discovery
Fracking Legislation Defeated

San Joaquin Geological Society

Annual Kickoff Golf Tournament & BBQ a Success

First Fall Dinner Meeting- Oct. 9



SCOTT M. MOSSMAN
SENIOR GEOPHYSICIST
GRAVITY & MAGNETIC CONSULTING

(303) 875-2360

scmossman@gmail.com
www.smgmconsulting.com

610 Santa Monica Blvd. 203
Santa Monica, CA 90401

Ralph J. Goehring, CEO



SandDollar Financial LLC

Your outsource accounting solution.

*Outsource your oil and gas accounting to us.
Specialists in energy and pre-IPO accounting.*

(661) 952-7789

www.SandDollarOutsource.com

Alaska Geological Society

www.alaskageology.org

P. O. Box 101288
Anchorage, AK 99510

Contact: Tom Morahan
907.230.1672



Luncheon meetings are held monthly September through May, usually on the third Thursday of the month, at the BP Energy Center (1014 Energy Court) from 11:30 a.m. to 1:00 p.m. The hot lunch cost is \$20 for members with reservations; \$22 for non-members with reservations; and \$25 without reservations. The box lunch cost is \$13 for members with reservations, \$15 for non-members with reservations, and \$18 without reservations. For reservations, call the AGS reservation voice mail at 907-258-9059 or contact David Hite at hiteconsult@acsalaska.net by noon on Monday before the meeting.

| | | | |
|------------------|--------------|--------------|------------------------------|
| President: | Ken Helmold | 907.269.8673 | ken.helmold@alaska.gov |
| President-Elect: | Steve Wright | 907.263.7865 | Sswr@chevron.com |
| Vice-President: | Dick Garrard | 907.244.1067 | Rgarrard@talisman-energy.com |
| Secretary: | Chad Hults | 907.786.7417 | chults@usgs.gov |
| Treasurer: | Alan Hunter | 907.263.7947 | alhunter@chevron.com |
| Past-President: | Tom Morahan | 907.230.1672 | tmorahan@petroak.com |

Coast Geological Society

www.coastgeologicalsociety.org

P. O. Box 3055
Ventura, CA 93006

Contact: Ed Magdaleno
805.535.2086



Dinner meetings are held monthly September through May, usually on the third Tuesday of the month, at the Poinsettia Pavilion, 3451 Foothill Road in Ventura. Social hour starts at 6:00 p.m., dinner is served at 7:00 p.m., and the talk starts at 8:00 p.m. The cost of dinner with reservations is \$20 (members), \$25 (non-members), or \$10 (students and K-12 teachers); the talk is free. For reservations, please email Jerry Nichols (secretary@coastgeologicalsociety.org). Reservations should be made by 4:00 p.m. on the Friday before the meeting.

| | | | |
|-----------------|--------------|--------------|--|
| President: | Ed Magdaleno | 805.535.2086 | president@coastgeologicalsociety.org |
| Past President: | John Harris | | pastpresident@coastgeologicalsociety.org |
| Vice President: | Robert Dame | | vicepresident@coastgeologicalsociety.org |
| Secretary: | Dion Lobreau | | secretary@coastgeologicalsociety.org |
| Treasurer: | Peter Morris | | treasurer@coastgeologicalsociety.org |

Los Angeles Basin Geological Society

www.labgs.org

515 So. Flower Street, Ste 4800
Los Angeles, CA 90071

Contact: Bill Long
213.225.5900 x 205



Luncheon meetings are held monthly September and October; and January through June, usually on the fourth Thursday of the month, in the Monarch Room at The Grand at Willow Street Conference Centre (4101 E. Willow Street) in Long Beach. Lunch is served at 11:30 a.m., and the talk starts at 12:15 p.m. The cost is \$20 (with reservations), \$25 (without reservations), or \$5 for students. Reservations can be made online at www.labgs.org or by contacting Marieke Gaudet at 562.624.3364 or marieke_gaudet@oxy.com. Reservations must be made prior to Tuesday before the meeting.

| | | | |
|-----------------|---------------|--------------|----------------------------|
| President: | Bill Long | 213.225.0205 | william.long@breitburn.com |
| Vice President: | Jean Kulla | 949.500.3095 | k2mobile@.com |
| Treasurer: | Bert Vogler | | hvogler@kleinfelder.com |
| Secretary: | Graham Wilson | | Gwilson@SHPI.net |

Northern California Geological Society

www.ncgeolsoc.org

9 Bramblewood Court
Danville, CA 94506-1130

Contact: Barb Matz
Barbara.Matz@shawgrp.com



Evening meetings are held monthly September through May, usually on the last Wednesday of the month, at the Masonic Center (9 Altarinda Road) in Orinda. Social hour starts at 6:30 p.m., and the talk starts at 7:00 p.m. (no dinner). For reservations, contact Dan Day at danday94@pacbell.net before the meeting. Cost is \$5 per regular member; \$1 per student member; and \$1 per K-12 teachers.

Northwest Energy Association

www.nwenergyassociation.org

P. O. Box 6679
Portland, OR 97228-6679

Contact: Tim Blackwood
503.656.0156



Breakfast meetings are held monthly September through May, usually on the second Friday of the month, at the Multnomah Athletic Club (1849 SW. Salmon Street) in Portland. Meeting time is at 7:30 - 9:00 am. The cost is \$18. For information or reservations, contact Steve Walti.

| | | |
|-----------|---------------|---------------------------------------|
| President | Tim Blackwood | tblackwood@pacificgeotechnicalllc.com |
| Treasurer | Steve Walti | steven.walti@nwnatural.com |

Sacramento Petroleum Association

P. O. Box 571
Sacramento, CA 95812-0571

Contact: David Hartley
530.304.4277



Luncheon meetings held monthly January through November, on the third Wednesday of the month. Location: Club Pheasant Restaurant in West Sacramento. The meetings starts at noon. The cost is \$16 - \$20. For information or reservations, contact Pam Ceccarelli.

| | | | |
|------------------|----------------|--------------|-------------------|
| President: | Jerry Reedy | 916.486.2643 | JWR5532@aol.com |
| Vice-President: | David Hartley | 530.304.4277 | drilmax1@aol.com |
| Secretary | Derek Jones | 916.859.4710 | djones@gasbiz.com |
| Editor/Treasurer | Pam Ceccarelli | 916.439.0400 | pc626@comcast.net |

San Joaquin Geological Society

www.sanjoaquingeologicalsociety.org

P. O. Box 1056
Bakersfield, CA 93302

Contact: Jeff Gartland
Jeff_Gartland@oxy.com



We have dinner meetings on the second Tuesday of the month at the American Legion Hall at 2020 "H Street" in Bakersfield. There is an icebreaker at 6:00 pm, dinner at 7:00 pm, and a talk at 8:00 pm. Dinner is \$25.00 for members with reservations and \$30.00 for nonmembers and members without reservations, and the talks are free.

| | | |
|------------------|-----------------|-------------------------|
| President: | Jeff Gartland | Jeff_Gartland@oxy.com |
| Past President: | Tim Elam | kyrocks@peoplepc.com |
| President-Elect: | Laura Bazeley | lbazeley@wziinc.com |
| Vice-President: | Vaughn Thompson | vaughn_thompson@oxy.com |
| Secretary: | Emily Fisher | EAFisher@aeraenergy.com |
| Treasurer: | Kathy Smith | kathysmith@pacseis.com |

- Images (graphics, photos, and scans) must be at least 300 dpi resolution. Text should be scanned at least 600 dpi.
- Scanned photos, illustrations (line art) or logos must be scanned at 300 dpi minimum and saved as a tiff or eps.
- Avoid clip-art and images from the internet. These images are low-resolution (72 dpi).

Advertising Rates

| Members | Single Issue | Year (6 issues) |
|---------------|--------------|-----------------|
| Full Page | \$400.00 | \$1600.00 |
| Half Page | \$250.00 | \$1050.00 |
| Quarter Page | \$150.00 | \$650.00 |
| Business Card | | \$250.00 |

Societies Free Advertising

| | | |
|----------------------|-----------------------------|------------------------------------|
| Convention Societies | Unlimited Space 1/4 Page | PSAAPG Newsletter AAPG Explorer |
|----------------------|-----------------------------|------------------------------------|

Newsletter Deadline

November & December Issue

November 1st



Investing in Energy to Support Education and Research



“Today’s computational capacity and the availability of large volumes of data from

ground-based observations and satellites offer new opportunities for understanding how the Earth system works and how human activities interact with Earth processes. The Stanford Center for Computational Earth and Environmental Science will enable the development of sophisticated models to address questions about energy and freshwater resources, natural hazards, climate change, and other global issues.”

Jerry M. Harris, Founding Director, Center for Computational Earth and Environmental Science, Professor and Former Chair, Department of Geophysics, Stanford University; Director, Stanford Wave Physics Laboratory; Past Distinguished Lecturer, Society of Exploration Geophysicists, American Association of Petroleum Geologists, and Society of Petroleum Engineers.

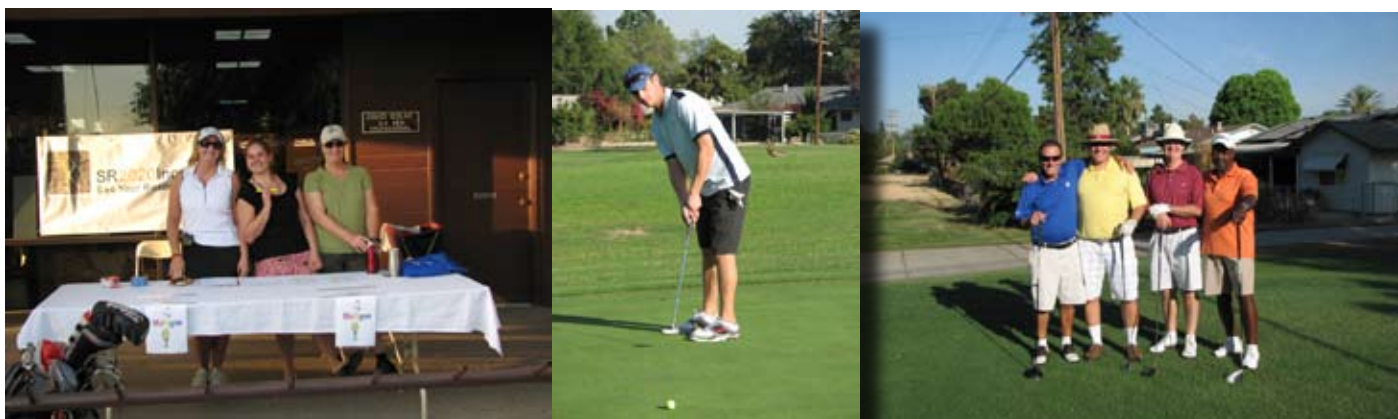
The alumni-managed Stanford Petroleum Investments Funds own, manage, and acquire producing oil and gas royalties and other energy investments. Income from these investments provides essential discretionary funding in support of energy and environmental education and research and other programs of the Stanford School of Earth Sciences. The Petroleum Investments Funds provided seed funding to help launch the Stanford Center for Computational Earth and Environmental Science.

Visit <http://earthsci.stanford.edu/alumni/support/pif> if you would like to sell or donate producing oil and gas royalties or learn more, or call or email David Gordon, Executive Administrator, Petroleum Investments Committee, Stanford School of Earth Sciences, at (650) 723-9777 or dsgordon@stanford.edu to see how you can help.

Stanford Petroleum Investments Funds



2012 SJGS Golf Tournament & BBQ



DHISERVICES

Formation Evaluation Specialists

www.dhiservices.com

Les Collins

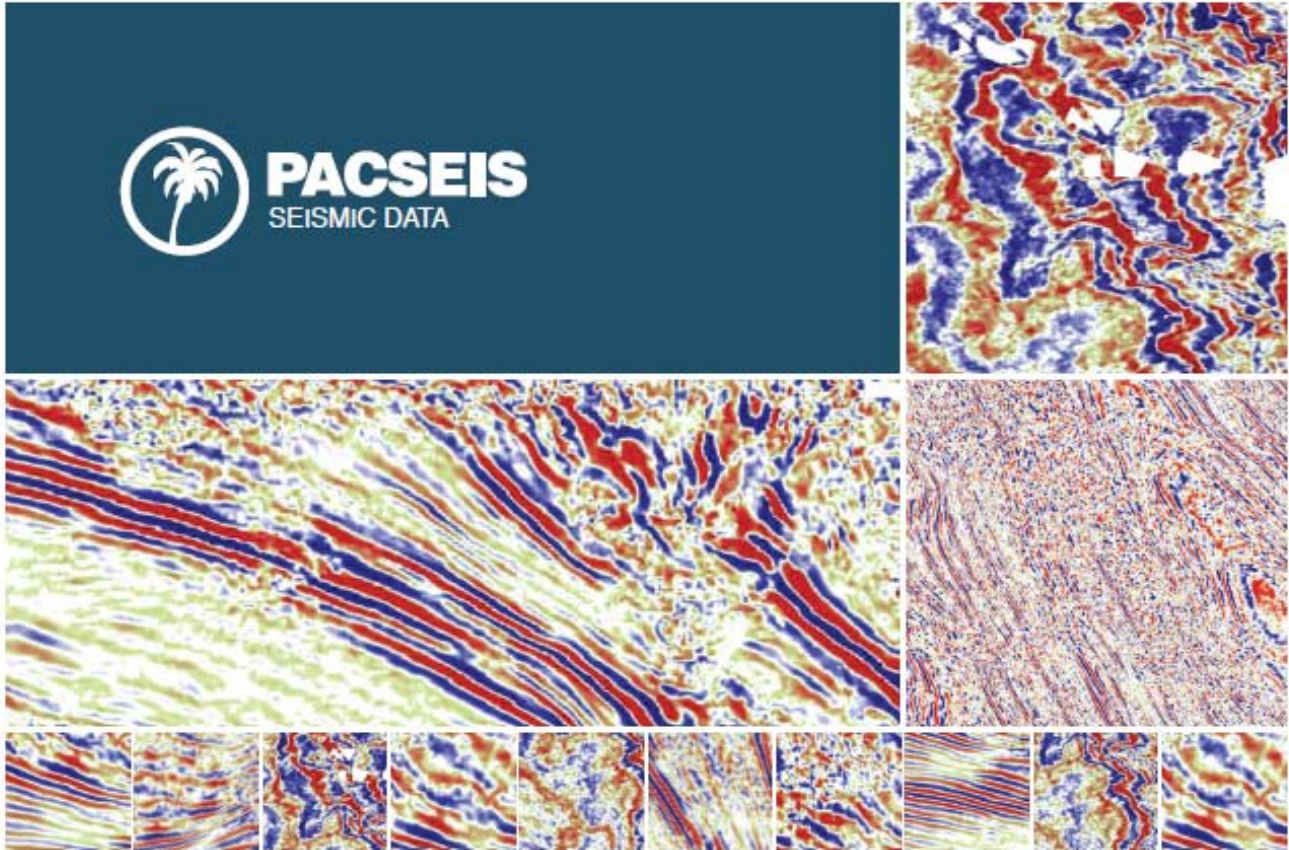
Regional Operations Manager

2202 Zeus Court
Bakersfield, CA 93308
Tel: +1 (661) 588-8310
Fax: +1 (661) 588-8322
Cell: +1 (661) 742-2720
Email: lcollins@dhiservices.com



PACIFIC SECTION AAPG
P. O. Box 1072
BAKERSFIELD, CA 93302

PRESORTED
STANDARD
U.S. POSTAGE PAID
BAKERSFIELD, CA
PERMIT NO. 1163



PACIFIC SEISMIC COMPANY

The leader in subsurface information

RESOURCES THAT DELIVER THE DIFFERENCE

- One of the largest seismic databases available for license
- Seismic available for immediate license
Over 500,000 line miles of 2D data located in domestic United States (onshore & offshore)
- 2,500 square miles of 3D surveys

RECENTLY ACQUIRED SEISMIC DATABASES BY PACIFIC SEISMIC CO.

- Chevron USA California, OXY USA Nationwide (including Arco & Enron)
- Santa Fe energy, TXO, Cities Service Oil & Gas Nationwide
- Southern Pacific, PG&E/ NGC, SOHIO

PACIFIC SEISMIC COMPANY | Your Full-Service Seismic Brokerage & Acquisition Company

EXPLORATION CONSULTING

PROSPECT FINANCING

PROJECT DEVELOPMENT

Tel (661) 322-1171 | Fax (661) 322-1181 • www.pacseis.com | Bakersfield | Houston | Denver