



Pacific Petroleum Geology



NEWSLETTER

Pacific Section • American Association of Petroleum Geologists

July & August 2012



Coastal Cross Section

Get More from your Core



With reservoirs becoming increasingly complex, you need the most accurate information you can get to better understand your reservoir.

Weatherford Labs helps you get more from your core by combining an unsurpassed global team of geoscientists, engineers, technicians and researchers with the industry's most comprehensive, integrated laboratory services worldwide. From core analysis, sorption, geochemistry and isotopic composition to detailed basin modeling and comprehensive data packages, we provide you with real reservoir rock and fluid information that hasn't been distilled by a simulator or iterated by software.

We call it "The Ground Truth™" – giving you the accurate answers you need for better reservoir understanding. You'll call it a better return on your reservoir investment. To learn more, contact TheGroundTruth@weatherfordlabs.com.



2012-2013 OFFICERS

President	Tony Reid 661.412.5467 president@psaapg.org
President-Elect	Dan Schwatz 661.665.5832 president-elect@psaapg.org
Vice President	Jana McIntyre 661.869.8231 vice-president@psaapg.org
Secretary	Becca Lanners 562.495.9310 secretary@psaapg.org
Treasurer 2011-2013	Jennifer Anderson 661.363.3226 treasurer@psaapg.org
Treasurer 2012-2014	Jack Grippi 661.665.5061 treasurer@psaapg.org
Past President	John Minch 805.898.9200 president@psaapg.org
Editor-in-Chief 2012-2014	Tim Elam 661.378.6790 editor@psaapg.org

STAFF

Web Master	Bob Countryman 661.589.8580 webmaster@psaapg.org
Membership Chair	Evan Bargnesi 661.859.9713 membership@psaapg.org
Publications Chair	Larry Knauer 661.392.2471 publications@psaapg.org LarryKnauer@chevron.com
Advisory Council Representative 2012-2014	Jon Schwalbach 805.648.8518 JRSchwalbach@aeraenergy.com

Cover Photo: View of the Ventura Avenue Anticline from the Grub Lease Oil Field, near Ventura, CA. Photo provided by the editor.

EVERY ISSUE

- 4 Message from the President • T. Reid
- 5 Editor's Corner • E. Washburn
- 6 PSAAPG News
- 10 Publications
- 12 Member Society News

THIS ISSUE

- 6 AAPG-SEG West Coast Student Expo
- 11 PSAAPG Foundation Annual Meeting
• M. Wislon





Each July, the Pacific Section's new officers take their positions on the Executive Committee. I'm Tony Reid, your President for 2012-2013. Joining me on the leadership team are Dan Schwartz (President Elect), John Minch (Past President), Jana McIntyre (Vice President), Becca Lanners (Secretary), Jennifer Anderson (Treasurer), Jack Grippi (Treasurer Elect), Tim Elam (Editor-in-Chief), and Jon Schwalbach (Advisory Council).

I would like to acknowledge all those who ran for office – Cynthia Huggins and Larry Knauer put together a great slate of candidates. I would also like to recognize John Minch's 2011-2012 Executive Committee and their work in leaving the section financially strong and with numerous projects in the works that will benefit the membership.

The section has several challenges that the Executive Committee will tackle this year including; improving communications, increasing member participation in section activities, and reversing the decline in membership. Maintaining a healthy membership is vital for the Section. It is the foundation upon which our annual meetings are built, and section members populate the Executive Committee and other committees that keep us running smoothly. Maintaining section membership continues to be a battle, but by pursuing membership renewals and through new member initiatives, membership grew by 20 percent over the year. The Young Professional program continues to be at the forefront to recruit new members and officers for the section.

We continue to explore ways to introduce the section to students in west coast universities. At the forefront will be the Imperial Barrel Award competition, which grew to five universities in 2012. Cynthia Huggins will chair a committee charged with developing processes whereby the section can maintain our level of support for this growing program.

To improve communications with our members, the Executive Committee will implement upgrades to our web site over the coming year. Greg Hummel, our outgoing Vice President, conducted a review of options, and as a result we should see better functionality coming soon. We are also looking to enhance our Executive Committee meeting with improved communications with our affiliated society leaders.

Our main activity for the year is our annual convention in Monterey (April 19-25, 2013). Paul Henshaw is the General Chair, and the meeting theme is "Energy and the Environment: Working Together for the Future." The meeting will be in conjunction with the Pacific Sections SEPM and SEG, and once again we will partner with the Western Region SPE to make a more comprehensive meeting. The call for papers will arrive in your inbox/mailbox in the coming month.

I'll end this column by making a plea that I will probably repeat through the year: get involved with the section – get on a committee, run for office, submit an abstract for the convention. Declining AAPG technical contribution at our conventions is of particular concern. I hate to think of a time when we cancel a convention due to the lack of a technical program. All members should consider giving a paper or poster. In addition to promoting the science of petroleum geology, a technical contribution adds to your personal development.

Congratulations to our election winners and new Executive Committee members: Dan Schwartz (President-Elect), Jack Grippi (Treasurer-Elect), and Tim Elam (Editor-in-Chief). Some familiar faces remain on the committee. Jana McIntyre was elected Vice President (formerly Treasurer), and Becca Lanners was elected for a second term as Secretary. Tony Reid is our new President, John Minch moves to fill the Past President position, and Jennifer Anderson takes over as Treasurer.

Many thanks to Cynthia Huggins (President-Elect, President, Past President) and Greg Hummel (Vice President), who have completed their terms of office and are (at least temporarily) leaving the Executive Committee.

Meetings at the national convention in Long Beach confirmed that the Pacific Section is a strong organization relative to some other sections, and I hope the new Executive Committee will continue to help the section build on its strengths for the benefit of the west coast geologic community.



2012-2013 PSAAPG Executive Committee:
Left to right- Jack Grippi, Jennifer Anderson, Becca Lanners, Jana McIntyre, Tony Reid, Dan Schwartz, and John Minch. Photo taken at the Oil Museum in Santa Paula, CA

Marty Hall
US Marketing / Sales Manager



7765 Windwood Way
P.O. Box 549
Parker, CO 80134
USA

P: 720.851.6152
C: 303.885.8860

geokinetics.com
marty.hall@geokinetics.com

**FORT DAVIS PALEONTOLOGIC
& STRATIGRAPHIC CONSULTANTS**

William G. Reay

112 Arabella Dr
Fort Davis, TX, 79734
432.426.2443
wgreay@mztv.net

Age dating and environmental determinations of the LA Basin, the Ventura Basin, the San Joaquin and Sacramento sections, as well as the Alaskan Cook Inlet and Post Paleozoic North Slopes section

Four year (2008-2011) Summary: AAPG-SEG West Coast Student Expo

The AAPG-SEG West Coast Student Expo is an annual event hosted by the Department of Geological Sciences at California State University, Northridge (CSUN), and co-sponsored by the American Association of Petroleum Geologists (AAPG, PS-AAPG) and Society of Exploration Geophysicists (SEG). It was initiated in 2008 and has generally been held in late September to early October each year. Participating companies have included: Aera Energy, BHP Billiton, Chevron, Conoco Phillips, Encana, Exxon-Mobil, Microseismic, Occidental, Schlumberger, Swift, and Venoco. These companies have interviewed and hired undergraduate and graduate (M.S. and Ph.D.) students from a diverse pool of participants hailing from 44 schools in 13 states and 4 countries:

Arizona: Northern Arizona University

California: California Institute of Technology; California State University, Fresno; California State University, Fullerton; California State University, Long Beach; California State University, Los Angeles; California State University, Northridge; California State University, Sacramento; College of the Canyons; Moorpark College; Moss Landing Marine Laboratories; Occidental College; San Diego State University; San Francisco State University; San Jose State University; Santa Barbara City College; University of California, Davis; University of California, Los Angeles; University of California, Riverside; University of California, Santa Barbara; University of California, San Diego; University of California, Santa Cruz; University of Southern California; Stanford.

Idaho: Boise State University, University of Idaho

Kansas: Kansas State University

Mississippi: University of Mississippi

Missouri: Washington University St. Louis, Missouri University of Science and Technology

Nevada: University of Nevada, Reno

New Mexico: New Mexico Institute of Mining and Technology

New York: University of Rochester

Oregon: University of Oregon; Oregon State University.

Texas: UT San Antonio, University of Houston, Texas Tech.

Utah: University of Utah, Utah State

Virginia: Virginia Tech

International: National School of Geology, France; CICESE, Mexico; Univ. of Aberdeen

Attendance has been strong, ranging from 76 to 107 students per year, mainly M.S. candidates (50-60%+) with a number of undergraduates (30-40%) and Doctoral students (10%). The three-day program includes field trip(s), a short course, a student poster session, company booth expositions, and private interviews of students selected by companies based on submitted resumes.

2012 AAPG-SEG West Coast Student Expo

The 2012 event is scheduled to take place at CSUN on 11 to 13 October. Please see our web site (www.csun.edu/geology/aapg-seg.htm) for additional information and a preliminary schedule of events. Or contact: Dr. Kathleen Marsaglia, Dept. of Geological Sciences, California State University Northridge, kathie.marsaglia@csun.edu, 1-818-677-6309.

Be at the Epicenter...

AAPG-SEG

**West Coast
Student Expo**



11-13 October 2012

**California State University,
Northridge**

***Student poster presentations, company
interviews, networking, field trips, and more...***

***Interested Companies and Students see:
www.csun.edu/geology/aapg-seg.htm
for registration information***

PAYZONE INC.*Geological, Geophysical, and Petrophysical Consulting Services for the Petroleum Industry* 661-387-1715

- Training in advanced log analysis focused on California
- Accurate, consistent fieldwide reservoir properties for modeling
- Old E-Log Interpretation
- Rock properties from sand/diatomite/shale sequences
- Log data management/digital log database cleanup
- 2D/3D seismic interpretation, specializing in old 2D data

Our petrophysical models for diatomite and California sands are based on over 30 years of experience with these rocks, including core, log, and lithology data from every basin in the state

Deborah Olson, President
 dmonson@payzoneinc.com
 661-747-0375

Now Offering Image Log Interpretation Services!

www.payzoneinc.com

Tom Howard, Image Analyst
 tomh@payzoneinc.com
 832-407-2862

TRAINING!

PAYZONE INC.*Geological, Geophysical, and Petrophysical Consulting Services for the Petroleum Industry* 661-387-1715

Technical Training Courses

Working with Ancient Electric Logs October 2, 2012, Bakersfield, CA

Shaly Sand Log Analysis in California: Practical Methods for Accurate Reservoir Properties
 October 23-25, 2012, Bakersfield, CA

For more information about these courses please contact Deborah or Tom or visit our website

Deborah Olson, President
 dmonson@payzoneinc.com
 661-747-0375

Now Offering Image Log Interpretation Services!

www.payzoneinc.com

Tom Howard, Image Analyst
 tomh@payzoneinc.com
 832-407-2862



GEOLOGICAL LOGGING INC.
 9229 Beatty Drive, Suite B
 Sacramento, CA 95826
 Telephone 916-452-9570
 Cell 952-8975 Fax 452-9573
geolog@sbcglobal.net

ERNIE BURROUGHS
 President/Owner
 Registered Geologist No. 1628



RESERVOIR CHARACTERIZATION
 GEOLOGY
 PETROPHYSICS
 DATABASE MANAGEMENT
 DIGITIZING & SCANNING

EarthQuest Technical Services, LLC

David R. Walter

drwalter@eqtservices.com
www.eqtservices.com

2201 'F' Street
 Bakersfield, CA 93301
 661-321-3136

J.M. "BUZZ" DELANO, JR.
Consultant

Cell (661) 747-0337
Office (661) 832-5229
Fax (661) 832-5229
Email: BuzzBake@aol.com

Delano Petrophysical Consulting Services

816 Ferdinand Ct.
Bakersfield, California 93309

Dipmeter Analysis
Tape Conversion Editing
Expert Petrophysical Analysis
Wellsite Supervision

Special Core Analysis In Bakersfield



Core Lab
RESERVOIR OPTIMIZATION

Laboratory Services Include:

- Capillary Pressure • Relative Permeability • Formation Damage Studies • Electrical Analyses • Environmental Studies

Core Laboratories, Inc • 3437 Landco Drive • Bakersfield, CA 93308
Tel: (661) 325-5657 • Fax: (661) 325-5808



PETROLOG

PETROLOG, INC.
JOHN T. WILLIAMS
Geologist, P.G.#5899, President

Geological Well Logging

P.O. BOX 7028
VENTURA, CA 93006
jtw@petrolog-geological.com

(805) 642-2847 • Fax(805) 980-5569 • Cell(805) 231-3793

GREGORY GEOLOGICAL SERVICES

Glenn J. Gregory

California Professional Geologist #3676

4800 Easton Drive, Suite 101
Bakersfield, CA 93309

(661) 633-5555
glenng@bak.rr.com

Stanford University Geologic Studies of the San Joaquin Basin, 1980-2010

Stephan A. Graham, W.J. and M.L. Crook Professor
School of Earth Sciences, Stanford University, Stanford, California

The dissertations reproduced on this DVD largely predate the digital era, so many have been scanned from original hard copies of variable states of preservation; as a result, the quality varies in this product. The original dissertations are on file and accessible to the public at Branner Earth Sciences Library, School of Earth Sciences, Stanford University. Scans for this DVD derive from two sources. Some were produced as part of a program at Stanford to digitize all older dissertations, with thanks to Julie Sweetkind-Singer, (Acting Head Librarian) and her staff at Branner Library, for facilitating access to previously scanned dissertations. However, the majority of the dissertations in this collection were scanned pro bono by PayZone, Inc. of Bakersfield, thanks to the considerable efforts of Deborah Olson and her colleagues. Larry Knauer, Pacific Section AAPG, encouraged and facilitated production of the DVD. Ultimately, principal credit for this compilation goes to Deborah Olson, who first suggested the idea of this DVD in order to facilitate greater public access to these dissertations, because most were previously unpublished or published in regional publications of limited circulation. This body of research would not have been possible without the support of the San Joaquin Project consortium member companies, which over time included: Amerada-Hess, Amoco, Arco, BP Alaska, Champlin, Chevron, Cities, Conoco, Exxon, Getty, Gulf, Husky, Marathon, Mobil, Natural Gas Corp, Occidental, Phillips, Santa Fe Energy, Shell, Sohio, Superior, Tenneco, Texaco, and Unocal.

A 2-DVD set containing the information described above may be purchased from the Pacific Section American Association of Petroleum Geologists (PSAAPG) Publications Committee for \$50.00 by contacting (and including a check or credit card information and a shipping address)

PSAAPG Publications
P.O. Box 1072
Bakersfield, CA 93302

or

Larry Knauer (Publications Chair)
larryknauer@chevron.com
661-392-2471



Western US/US Land/Wireline Systems
Sales: +1 661.334.3800 | Fax: +1 661.334.3808
Operations: +1 661.765.2020 | Fax: +1 661.765.2150
<http://www.bakerhughes.com> | **Advancing Reservoir Performance**

The Pacific Section AAPG Foundation is having its Annual Meeting on September 13, 2012 in Bakersfield, California

The meeting will run from 2:00 PM to 6:00 PM.

Any interested Pacific Section Members are invited to attend.

Please contact Mark L. Wilson at mwilson@santamariaenergy.com and he will provide you location information and an agenda.



The Pacific Section AAPG Foundation is a 501 C(3) Corporation that conducts the educational and charitable business of the Pacific Section AAPG. Your participation at this meeting is welcomed and if you cannot attend, your suggestions and recommendations can be forwarded to the same address. Re-election of expiring Foundation Trustees and committee assignments will be made at this meeting.

The Pacific Section AAPG Foundation was founded in 1999. It has a seven member Board of Trustees. The current Trustees include Mark L. Wilson, Donna Thompsen, Robert Countryman, Robert G. Lindblom, and Larry Knauer, as well as ex-officio members, the President of the Pacific Section (Tony Reid) and the Treasurer of the Pacific Section (Jennifer Anderson). Its funding comes from checkoffs on the Pacific Section dues statement, sales of used books donated to the Foundation for that purpose at Pacific Section conventions, an annual appeal for donations conducted each December, and distributions from funds that the Pacific Section accumulates in excess of their requirement for operations.



DHISERVICES

Formation Evaluation Specialists

www.dhiservices.com

Les Collins

Regional Operations Manager

2202 Zeus Court
Bakersfield, CA 93308
Tel: +1 (661) 588-8310
Fax: +1 (661) 588-8322
Cell: +1 (661) 742-2720
Email: lcollins@dhiservices.com

Headline News

Alaska Geological Society

September 20- First Fall Meeting, Speaker Jim Markello- The Lisburne Oil Field

Coast Geological Society

September 18 Meeting- JPL Project Scientist for Mars Science Laboratory "Curiosity"

Society Donates \$6000 in Scholarship Funds to Local Colleges

Fall Golf Tournament Scheduled for October in Ojai

L.A. Basin Geological Society

Sold Out- July 26 Picnic in the Park at Signal Hill

Graham Wilson Fills Secretary Role Abdicated by Tawnya Hildebrand, Who Resigned to Pursue a Master's Degree

Northern California Geological Society

Regular Meetings Resume in September

Northwest Energy Association

Looking for Officers and Company Sponsorships

Sacramento Petroleum Association

Fracking Debate Heats Up Throughout California

San Joaquin Geological Society

Annual Golf Tournament & BBQ September 14

Society Distributes >\$10,000 in Scholarships and Local Donations



SCOTT M. MOSSMAN
SENIOR GEOPHYSICIST
GRAVITY & MAGNETIC CONSULTING

(303) 875-2360

scmossman@gmail.com
www.smgmconsulting.com

610 Santa Monica Blvd. 203
Santa Monica, CA 90401

Ralph J. Goehring, CEO



SandDollar Financial

Your outsource accounting solution.

*Outsource your oil and gas accounting to us.
Specialists in energy and pre-IPO accounting.*

(661) 952-7789

www.SandDollarOutsource.com

Alaska Geological Society

www.alaskageology.org

P. O. Box 101288
Anchorage, AK 99510

Contact: Tom Morahan
907.230.1672



Luncheon meetings are held monthly September through May, usually on the third Thursday of the month, at the BP Energy Center (1014 Energy Court) from 11:30 a.m. to 1:00 p.m. The hot lunch cost is \$20 for members with reservations; \$22 for non-members with reservations; and \$25 without reservations. The box lunch cost is \$13 for members with reservations, \$15 for non-members with reservations, and \$18 without reservations. For reservations, call the AGS reservation voice mail at 907-258-9059 or contact David Hite at hiteconsult@acsalaska.net by noon on Monday before the meeting.

President:	Ken Helmold	907.269.8673	ken.helmold@alaska.gov
President-Elect:	Steve Wright	907.263.7865	Sswr@chevron.com
Vice-President:	Dick Garrard	907.244.1067	Rgarrard@talisman-energy.com
Secretary:	Chad Hults	907.786.7417	chults@usgs.gov
Treasurer:	Alan Hunter	907.263.7947	alhunter@chevron.com
Past-President:	Tom Morahan	907.230.1672	tmorahan@petroak.com

Coast Geological Society

www.coastgeologicalsociety.org

P. O. Box 3055
Ventura, CA 93006

Contact: Ed Magdaleno
805.535.2086



Dinner meetings are held monthly September through May, usually on the third Tuesday of the month, at the Poinsettia Pavilion, 3451 Foothill Road in Ventura. Social hour starts at 6:00 p.m., dinner is served at 7:00 p.m., and the talk starts at 8:00 p.m. The cost of dinner with reservations is \$20 (members), \$25 (non-members), or \$10 (students and K-12 teachers); the talk is free. For reservations, please email Jerry Nichols (secretary@coastgeologicalsociety.org). Reservations should be made by 4:00 p.m. on the Friday before the meeting.

President:	Ed Magdaleno	805.535.2086	president@coastgeologicalsociety.org
Past President:	Jon Schwalbach	805.648.8518	pastpresident@coastgeologicalsociety.org
Vice President:	Robert Dame		vicepresident@coastgeologicalsociety.org
Secretary:	Dion Lobreau		secretary@coastgeologicalsociety.org
Treasurer:	Peter Morris		treasurer@coastgeologicalsociety.org
Webmaster:	John Harris		treasurer@coastgeologicalsociety.org

Los Angeles Basin Geological Society

www.labgs.org

515 So. Flower Street, Ste 4800
Los Angeles, CA 90071

Contact: Bill Long
213.225.5900 x 205



Luncheon meetings are held monthly September and October; and January through June, usually on the fourth Thursday of the month, in the Monarch Room at The Grand at Willow Street Conference Centre (4101 E. Willow Street) in Long Beach. Lunch is served at 11:30 a.m., and the talk starts at 12:15 p.m. The cost is \$20 (with reservations), \$25 (without reservations), or \$5 for students. Reservations can be made online at www.labgs.org or by contacting Marieke Gaudet at 562.624.3364 or marieke_gaudet@oxy.com. Reservations must be made prior to Tuesday before the meeting.

President:	Bill Long	213.225.0205	william.long@breitburn.com
Vice President:	Jean Kulla	949.500.3095	k2mobile@.com
Treasurer:	Bert Vogler		hvogler@kleinfelder.com
Secretary:	Graham Wilson		

Northern California Geological Society

www.ncgeolsoc.org

9 Bramblewood Court
Danville, CA 94506-1130

Contact: Barb Matz
Barbara.Matz@shawgrp.com



Evening meetings are held monthly September through May, usually on the last Wednesday of the month, at the Masonic Center (9 Altarinda Road) in Orinda. Social hour starts at 6:30 p.m., and the talk starts at 7:00 p.m. (no dinner). For reservations, contact Dan Day at danday94@pacbell.net before the meeting. Cost is \$5 per regular member; \$1 per student member; and \$1 per K-12 teachers.

Northwest Energy Association

www.nwenergyassociation.org

P. O. Box 6679
Portland, OR 97228-6679

Contact: Tim Blackwood
503.656.0156



Breakfast meetings are held monthly September through May, usually on the second Friday of the month, at the Multnomah Athletic Club (1849 SW. Salmon Street) in Portland. Meeting time is at 7:30 - 9:00 am. The cost is \$18. For information or reservations, contact Steve Walti.

President	Tim Blackwood	tblackwood@pacificgeotechnicalllc.com
Treasurer	Steve Walti	steven.walti@nwnatural.com

Sacramento Petroleum Association

P. O. Box 571
Sacramento, CA 95812-0571

Contact: David Hartley
530.304.4277



Luncheon meetings held monthly January through November, on the third Wednesday of the month. Location: Club Pheasant Restaurant in West Sacramento. The meetings starts at noon. The cost is \$16 - \$20. For information or reservations, contact Pam Ceccarelli.

President:	Jerry Reedy	916.486.2643	JWR5532@aol.com
Vice-President:	David Hartley	530.304.4277	drilmax1@aol.com
Secretary	Derek Jones	916.859.4710	djones@gasbiz.com
Editor/Treasurer	Pam Ceccarelli	916.439.0400	pc626@comcast.net

San Joaquin Geological Society

www.sjgs.com

P. O. Box 1056
Bakersfield, CA 93302

Contact: Jeff Gartland
Jeff_Gartland@oxy.com



We have dinner meetings on the second Tuesday of the month at the American Legion Hall at 2020 "H Street" in Bakersfield. There is an icebreaker at 6:00 pm, dinner at 7:00 pm, and a talk at 8:00 pm. Dinner is \$25.00 for members with reservations and \$30.00 for nonmembers and members without reservations, and the talks are free.

President:	Jeff Gartland	Jeff_Gartland@oxy.com
Past President:	Tim Elam	kyrocks@peoplepc.com
President-Elect:	Laura Bazeley	
Vice-President:	Vaughn Thompson	
Secretary:	Emily Fisher	
Treasurer:	Kathy Smith	kathysmith@pacseis.com

- Images (graphics, photos, and scans) must be at least 300 dpi resolution. Text should be scanned at least 600 dpi.
- Scanned photos, illustrations (line art) or logos must be scanned at 300 dpi minimum and saved as a tiff or eps.
- Avoid clip-art and images from the internet. These images are low-resolution (72 dpi).

Advertising Rates

Members	Single Issue	Year (6 issues)
Full Page	\$400.00	\$1600.00
Half Page	\$250.00	\$1050.00
Quarter Page	\$150.00	\$650.00
Business Card		\$250.00

Societies Free Advertising

Convention Societies	Unlimited Space 1/4 Page	PSAAPG Newsletter AAPG Explorer
----------------------	-----------------------------	------------------------------------

Newsletter Deadline

September & October Issue

September 1st



Photo courtesy of Andreas Mulch

Investing in Energy to Support Education and Research



“Today’s computational capacity and the availability of large volumes of data from ground-based observations and satellites offer new opportunities for understanding how the Earth system works and how human activities interact with Earth processes. The Stanford Center for Computational Earth and Environmental Science will enable the development of sophisticated models to address questions about energy and freshwater resources, natural hazards, climate change, and other global issues.”

Jerry M. Harris, Founding Director, Center for Computational Earth and Environmental Science, Professor and Former Chair, Department of Geophysics, Stanford University; Director, Stanford Wave Physics Laboratory; Past Distinguished Lecturer, Society of Exploration Geophysicists, American Association of Petroleum Geologists, and Society of Petroleum Engineers.

The alumni-managed Stanford Petroleum Investments Funds own, manage, and acquire producing oil and gas royalties and other energy investments. Income from these investments provides essential discretionary funding in support of energy and environmental education and research and other programs of the Stanford School of Earth Sciences. The Petroleum Investments Funds provided seed funding to help launch the Stanford Center for Computational Earth and Environmental Science.

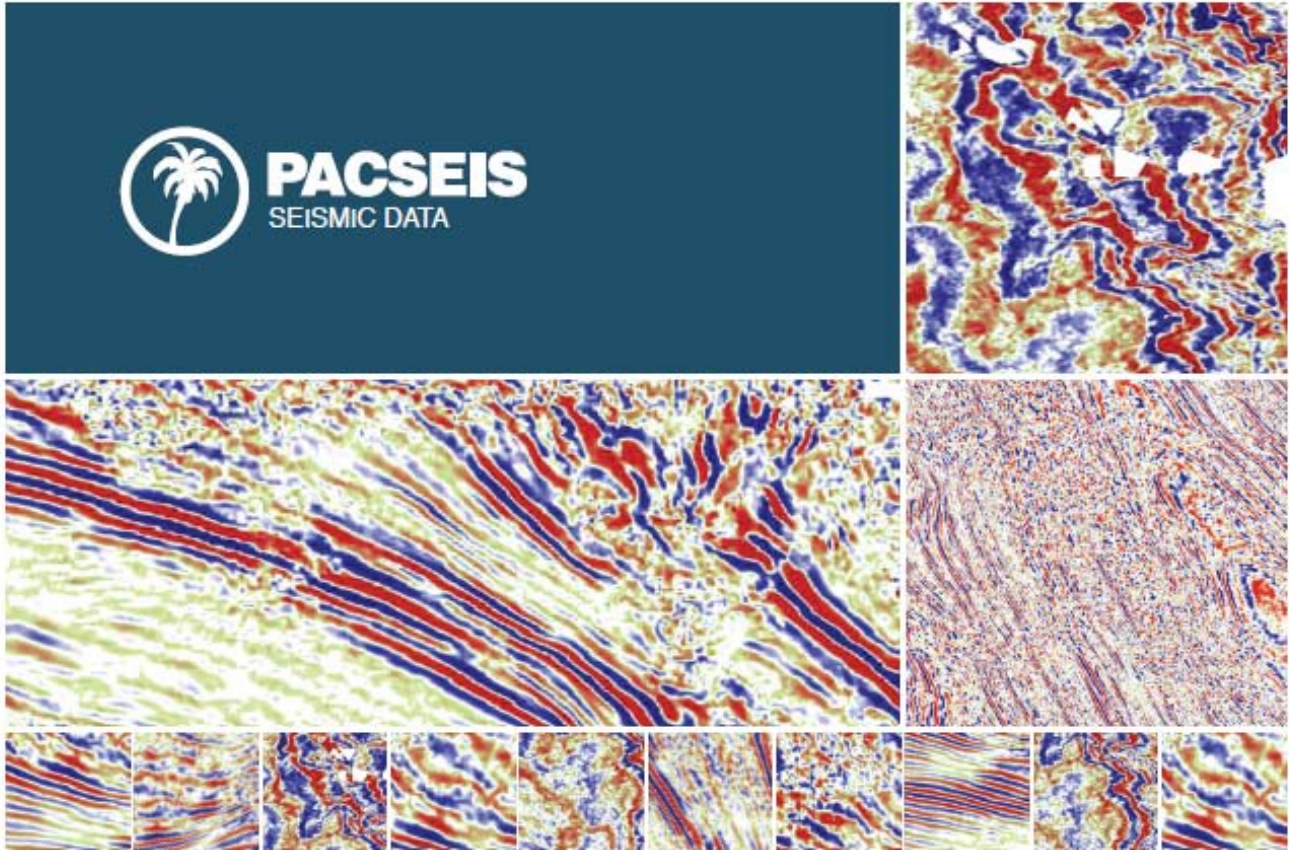
If you would like to sell or donate producing oil and gas royalties or learn more, visit <http://earthsci.stanford.edu/alumni/support/pif> or call or email David Gordon, Executive Administrator, Petroleum Investments Committee, Stanford School of Earth Sciences, at (650) 723-9777 or dsgordon@stanford.edu to see how you can help.





PACIFIC SECTION AAPG
P. O. Box 1072
BAKERSFIELD, CA 93302

PRESORTED
STANDARD
U.S. POSTAGE PAID
BAKERSFIELD, CA
PERMIT NO. 1163



PACIFIC SEISMIC COMPANY

The leader in subsurface information

RESOURCES THAT DELIVER THE DIFFERENCE

- One of the largest seismic databases available for license
- Seismic available for immediate license
Over 500,000 line miles of 2D data located in domestic United States (onshore & offshore)
- 2,500 square miles of 3D surveys

RECENTLY ACQUIRED SEISMIC DATABASES BY PACIFIC SEISMIC CO.

- Chevron USA California, OXY USA Nationwide (including Arco & Enron)
- Santa Fe energy, TXO, Cities Service Oil & Gas Nationwide
- Southern Pacific, PG&E/ NGC, SOHIO

PACIFIC SEISMIC COMPANY | Your Full-Service Seismic Brokerage & Acquisition Company

EXPLORATION CONSULTING

PROSPECT FINANCING

PROJECT DEVELOPMENT

Tel (661) 322-1171 | Fax (661) 322-1181 • www.pacseis.com | Bakersfield | Houston | Denver