



Pacific Petroleum Geology



NEWSLETTER

Pacific Section • American Association of Petroleum Geologists

May & June 2012



West Coast Welcome

Get More from your Core



With reservoirs becoming increasingly complex, you need the most accurate information you can get to better understand your reservoir.

Weatherford Labs helps you get more from your core by combining an unsurpassed global team of geoscientists, engineers, technicians and researchers with the industry's most comprehensive, integrated laboratory services worldwide. From core analysis, sorption, geochemistry and isotopic composition to detailed basin modeling and comprehensive data packages, we provide you with real reservoir rock and fluid information that hasn't been distilled by a simulator or iterated by software.

We call it "The Ground Truth™" – giving you the accurate answers you need for better reservoir understanding. You'll call it a better return on your reservoir investment. To learn more, contact TheGroundTruth@weatherfordlabs.com.



2011-2012 OFFICERS

President	John Minch 805.898.9200 president@psaapg.org
President-Elect	Tony Reid 661.412.5467 president-elect@psaapg.org
Vice President	Greg Hummel 805.361.7104 vice-president@psaapg.org
Secretary	Becca Lanners 562.495.9310 secretary@psaapg.org
Treasurer 2010-2012	Jana McIntyre 661.869.8231 treasurer@psaapg.org
Treasurer 2011-2013	Jennifer Anderson 661.363.3226 treasurer@psaapg.org
Past President	Cynthia Huggins 661.665.5074 president@psaapg.org
Editor-in-Chief 2010-2012	Ed Washburn 661.654.7182 editor@psaapg.org

STAFF

Web Master	Bob Countryman 661.589.8580 webmaster@psaapg.org
Membership Chair	Evan Bargnesi 661.859.9713 membership@psaapg.org
Publications Chair	Larry Knauer 661.392.2471 publications@psaapg.org LarryKnauer@chevron.com
Advisory Council Representative 2012-2014	Jon Schwalbach 805.648.8518 JRSchwalbach@aeraenergy.com

Cover photo: City of Long Beach (below) and Long Beach Convention Center (above). Photos provided by the editor.

EVERY ISSUE

4	Message from the President • J. Minch
5	Editor's Corner • E. Washburn
6	PSAAPG News
18	Publications
12	Member Society News

THIS ISSUE

6	AAPG 2012 ACE Photo Gallery
7	PSAAPG Election
12	Summary of 2011 Sacramento Valley Drilling Activities • S. Hector



Well, another successful AAPG National Convention is behind us. I want to tell you that if you missed it, you really missed it! We had a superb set of papers and posters and an impressive exhibition hall. I was informed that the field trips and short courses were well received. **Kay Pitts** did a superb job and is to be heartily congratulated. I was particularly impressed by the number of students who attended from the various schools. We are going to have a fine cadre of young geologists to take up the banner. And the Young Professionals: what enthusiasm.



It seemed that I was in meetings most of the days and evenings and didn't get any time to attend many talks. I did get a chance to update myself on society affairs and will pass some of them on to you here.

In the Editors Breakfast, we discussed the need for better writing skills among younger authors. We need to teach young authors (and older ones) writing skills and not to just rely on our computers. Get an English major to review your paper. If I can't read a paper, I send it back for proper syntax. Papers that need translating from another language can be particularly difficult.

In the Membership Breakfast, we had a long discussion on associate vs. active members. I am not sure what to add to this. We all know about the problem. Several ideas bantered about were: streamline the vetting process to advance the member to active membership (the committee is working on a one-stop application), call upon active members to vet their associate member colleagues to active membership (that is something that you can do today), and eliminate associate membership for those who qualify for active membership.

In the Sections Committee the PSAAPG presented our best practices paper. We are among the most active/proactive sections out there. We are significantly ahead of some sections.

The Imperial Barrel competition is heating up. From seven-teams in 2007 to, 94 schools from 23 countries in 2010. The University of Louisiana at Lafayette won the 2012 Imperial Barrel Award, second place was Khon Kaen University, Thailand, representing AAPG's Asia/Pacific Region, and third place went to the team from Colorado School of Mines.

Jon Schwalbach is our new representative on the National Advisory Council. I want to extend my and the PSAAPG's thanks to Kurt Neher for his service on the AC these past three years. While I am on the subject of the AC, I want to encourage you to nominate deserving PSAAPG members for National Awards. Information can be found on the AAPG website, or contact Bob Lindblom at RGLGEO@aol.com. We have about a month (6/22) to get the nominations in to Tulsa.

The AAPG sponsors a Teacher of the Year Award (TOTY) on the local, section, and national levels. I know that there are many deserving teachers out there! We need more nominations. The Rocky Mountain Section has the National Awardee the last two years. The nominee this year was impressive. I know we can also come up with an impressive teacher. Contact [<bob@eaglexpc.com>](mailto:bob@eaglexpc.com)

The 2012 AAPG ACE in Long Beach was a great geological gathering. Energy companies, geologic organizations, and universities from across the nation and across the globe were well represented. While traveling for such events may add to the excitement, it is certainly a thrill to have the global energy community gather in our back yard.

Seeing the enthusiasm of the many students who attended in interacting with professors and energy professionals from around the world was quite encouraging. The mutually beneficial relationship between our industry and academia is overwhelmingly apparent at this convention, and is well appreciated from both sides.

I'd like to thank the convention chair Kay Pitts, the entire convention committee, and all of the field trip leaders, presenters, session chairs, judges, exhibitors, and volunteers who worked hard to make it a successful and memorable week.



SCOTT M. MOSSMAN
SENIOR GEOPHYSICIST
GRAVITY & MAGNETIC CONSULTING

(303) 875-2360
scmossman@gmail.com
www.smgmconsulting.com

610 Santa Monica Blvd. 203
Santa Monica, CA 90401

Ralph J. Goehring, CEO



Your outsource accounting solution.

Outsource your oil and gas accounting to us.
Specialists in energy and pre-IPO accounting.

(661) 952-7789 **www.SandDollarOutsource.com**

PAYZONE INC.
Geological, Geophysical, and Petrophysical Consulting Services for the Petroleum Industry **661-387-1715**

- Training in advanced log analysis focused on California
- Accurate, consistent fieldwide reservoir properties for modeling
- Old E-Log Interpretation
- Rock properties from sand/diatomite/shale sequences
- Log data management/digital log database cleanup
- 2D/3D seismic interpretation, specializing in old 2D data

Our petrophysical models for diatomite and California sands are based on over 30 years of experience with these rocks, including core, log, and lithology data from every basin in the state

Deborah Olson, President
dolson@payzoneinc.com
661-747-0375

Now Offering Image Log Interpretation Services!

Tom Howard, Image Analyst
tomh@payzoneinc.com
832-407-2862

www.payzoneinc.com

Marty Hall
US Marketing / Sales Manager

7765 Windwood Way
P.O. Box 549
Parker, CO 80134
USA

P: 720.851.6152
C: 303.885.8860



geokinetics.com
marty.hall@geokinetics.com

**FORT DAVIS PALEONTOLOGIC
& STRATIGRAPHIC CONSULTANTS**

William G. Reay

112 Arabella Dr
Fort Davis, TX, 79734
432.426.2443
wgreay@mztv.net

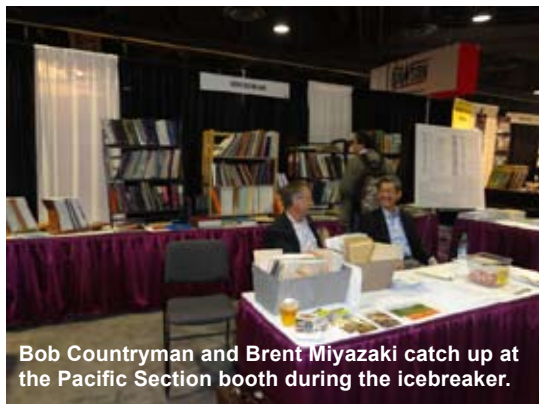
Age dating and environmental determinations of the LA Basin, the Ventura Basin, the San Joaquin and Sacramento sections, as well as the Alaskan Cook Inlet and Post Paleozoic North Slopes section



Larry Knauer and Mark Wilson.



2012 ACE Convention Committee. Back (L-R): Jeff Gartland, Terry Thompson, Bob Ballog, Bob Countryman, Dan Schwartz, Cynthia Huggins, Gareth Jones, Heidi Hoffower, Stefano Mazzoni, Cameron Campbell. Front (L-R): Kurt Neher, Larry Knauer, Kay Pitts, Linda Specht, Dalton Lockman, Gene Fritsche.



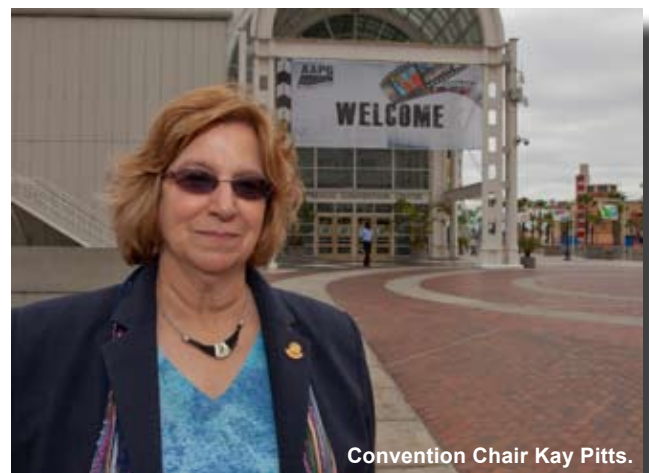
Bob Countryman and Brent Miyazaki catch up at the Pacific Section booth during the icebreaker.



Front (L-R): Larry Knauer, Mark Wilson, Sandy Jack. Back (L-R): Jean Henderson, Curt Henderson, Tony Reid, Tim Elam, Kurt Neher.



Distinguished attendees returning from lunch.



Convention Chair Kay Pitts.

Photos provided by Brian Pitts and the editor.



Geolog
GEOLOGICAL LOGGING INC.
9229 Beatty Drive, Suite B
Sacramento, CA 95826
Telephone 916-452-9570
Cell 952-8975 Fax 452-9573
geolog@sbcglobal.net

ERNIE BURROUGHS
President/Owner
Registered Geologist No. 1628



RESERVOIR CHARACTERIZATION
GEOLOGY
PETROPHYSICS
DATABASE MANAGEMENT
DIGITIZING & SCANNING

EarthQuest Technical Services, LLC

David R. Walter

drwalter@eqtservices.com
www.eqtservices.com

2201 'F' Street
Bakersfield, CA 93301
661-321-3136

President-Elect

J Fred Bair

Education:

1971-1973	West Hills Junior College	AA Degree
1973-1976	San Diego State University	BS

Professional Experience:

1976-1985	Gulf Oil Corporation	Exploration geophysics
	Alaska, California, Gulf of Mexico	
1985-1990	Chevron Corporation	Exploration geophysics
	Argentina, West Africa, Alaska, Santa Barbara Channel	
1990- 2012	Chevron NAEP	Development geology
	Elk Hills, Cymric, MWSS, Coalinga	

Professional Memberships and Service:

1984-present AAPG, SJGS, PSAAPG
 Past President and Vice President of San Joaquin Geological Society



Dan Schwartz

Education:

1974 Geology Bachelors from University of California, Berkeley
 1978 Geology PhD from University of Texas, Dallas

Professional Experience:

1978-1983 Research Geologist Shell Development, Bellaire Texas
 Belridge Oil Company Acquisition Team: Diatomite reservoir evaluation
 Deepwater Gulf of Mexico reservoir evaluation
 1983-1985 Manager Production Geology Research Department, Shell R&D
 1985-1992 Division Geological Engineer, Shell E&P, Bakersfield
 1992-1996 Manager Production Geology and Geophysics, Shell Ex-pro, Aberdeen Scotland
 1996-2003 Technical Director, Pecten International; and Head of Stratigraphy and Basin Modeling, Shell Deepwater Services, Houston TX
 2003-2005 Chief Geologist, Shell Oil Company, Houston TX
 2005-2009 Chief Petroleum Engineer, Shell International E&P, Houston TX
 2009-2012 Geological Consultant, Aera Energy LLC (secondment from Shell)
 Present Aera Energy LLC, Manager of Technology, Appraisal, and Piloting

Recent Professional Service:

2009-2012 AAPG Technical Advisory Committee
 2012 AAPG Annual Convention Technical Program Committee co-chair
 2012 SEPM Annual Convention Monterey Core Workshop Co-author and Presenter
 2012 AAPG Technical Advisory Committee co-vice chair



Vice-President

Stefano Mazzoni

Education:

2002 M.S. Earth Science, Univ. of Calif. Santa Cruz

2000 B.S. Earth Science, Univ. of Calif. Santa Cruz

Professional Experience:

2011-present, Geological Advisor, Occidental Oil & Gas, Bakersfield, CA

2008-2011, Senior Geologist, Occidental of Elk Hills, Bakersfield, CA

2006-2008, Senior Geologist, Occidental Oil & Gas, Houston TX

2002-2006, Geologist, ExxonMobil, Houston TX

Professional Service:

2012, Field Trip Chair, AAPG National Convention, Long Beach CA

2010-present, Vice President, San Joaquin Geological Society

2010-present, Pacific Region Alternate Delegate, Association for Women Geoscientists

2010, Field Trip Co-Leader, PSAAPG Convention, Anaheim CA

2009-present, Steering Committee Member, AAPG Young Professionals, Bakersfield, CA

2004-2006, Vice President, Lone Star Chapter of the Association for Women Geoscientists, Houston TX

Interests:

Traveling, hiking, skiing, cooking, soccer, photography, audiobooks, field trips, drinking good beer, enriching the lives of those around me



Jana McIntyre

Education:

1990 M.S. Geology Oregon State University

1984 B.S. U.C. Davis

Professional Experience:

1990-present Geologist, Bechtel/Occidental/Vintage SJV

1985-1986 Geologic Technician COFRC La Habra

PSAAPG Involvement:

2010-2012 Treasurer Elect/Treasurer

Interests:

Hiking, cross country skiing, eating



Treasurer-Elect

Robert Fiore

Education:

1999 M.S. Geophysics, Colorado School of Mines

1996 B.S. Geology, Ohio State University

Professional Experience:

1999-present, Chevron Corporation, Exploration and Development
Geology, Houston, TX, San Ramon, CA, Bakersfield, CA

Professional Service:

2005-2007 Recruiter and Poster Judge AAPG Student Expo (Houston)

2003-2004 Treasurer- Bay Area Geophysical Society (SEG Affiliate)

AAPG Member since 2001

Treasurer- Ohio State Geology Club

Interests:

Wine-making, ballroom dancing, travel, softball, playing bass guitar



Jack Grippi

Education:

1978 M.S. Geology, State University of New York at Albany

1976 B.S. Geology, State University College at Fredonia

Professional Experience t:

1979-1980 Geology Instructor, Ohio University

1980-2007 Geologist, Occidental Oil and Gas

2007-Present Geologist, Aera Energy LLC

Pacific Section AAPG Involvement:

2008-2009 Vice-President, San Joaquin Geological Society

2010-2011 President, San Joaquin Geological Society



Editor-in-Chief

Sarah Hebler

Education:

2008 M.S. Geology, San Diego State University

2005 B.S. Geology, San Diego State University

Professional Experience:

2008-Present Development Geologist, Chevron

2004-2006 Environmental Technician, Geocon, San Diego, CA

Pacific Section AAPG Involvement:

2008 Imperial Barrel Award Pacific Section Winner

Interests:

Things I love are travel, food, books, history, puzzles, running, and enjoying time with my family and friends



Tim Elam

Education:

1981 M.Sc. Geology, University of Kentucky, Lexington, Kentucky

1978 B.Sc. Environmental Science, Georgetown College, Georgetown, Kentucky

Professional Experience:

1996- Present Buena Vista Museum of Natural History: Volunteer; Docent; Instructor; Board of Directors, Bakersfield, California

2008 – 2010 The Great California Shake Out: Associate; Presenter, Bakersfield, California

2009 – 2009 Grand Staircase Escalante National Monument (GSENM), Seasonal Geology Volunteer, Kanab, Utah

1981 – 2009 Chevron Corporation, Geologist (Ret.), Bakersfield, California

Professional Service and Affiliations:

Active AAPG member since 1980

San Joaquin Geological Society, President, 2011 – 2012

Technical Program Committee, Guidebook Editor; Field Trip Coordinator, PSAAPG and Western Region SPE Convention, 2008

Technical Program Committee, Guidebook Contributor; Field Trip Leader, Northern California Geological Society (NCGS) Spring Field Trip, 1988

Buena Vista Museum of Natural History, Board of Directors, Member Earthquake Country Alliance, Associate

Geological Society of America (GSA)

San Joaquin Geological Society (SJGS)

Utah Geological Association (UGA)



Secretary

Becca Lanners

Education:

2010 B.S. Geology, CSU Long Beach

Current M.S. Geology student, CSU Long Beach

Professional Experience:

2009 Oxy, geoscience contractor

2011 Oxy, geoscience specialist for CA exploration

Professional Service and Affiliations:

2011-2012 Secretary PSAAPG

Past Secretary for LA Basin Geological Society

Past President of Geology Student Association, CSU Long Beach

2011 Imperial Barrel Award Competition team member



Marck Maroun

Education:

2009 B.S. Geology San Diego State University

2011 M.S. Geology San Diego State University

Professional Experience:

February 2012-present: Aera Energy, Bakersfield, CA, working in Lost Hills, 3D reservoir characterization model

Professional Service and Affiliations:

AAPG Member since 2008

Past president of San Diego State student chapter 2010-2011



Roland Bain and Mike Cummings recently released their annual report on the drilling activities in Northern California's Sacramento Valley in 2011.

Roland has been doing this report since 1966. The 60 holes that he reports that drilled for natural gas in the Sacramento Valley is the lowest number in all of those years. Roland only counted those holes that were drilled to find new reserves of gas, as another 13 wells were drilled during the year for gas storage.

A major factor in this anemic effort was the price of natural gas. The PG&E formula price for the first three months of 2012 was only \$2.87 per Mcf of 1,000 Btu gas, with compares unfavorably to the \$4.00 received a year earlier.


However, the statistics of the effort are not that bad. Forty of the sixty wells were completed for a 66.67% success rate. Of the 60 wells drilled, Venoco Inc. drilled by far the largest share: 43 holes, for 78% of the total effort by the industry. The remaining eight operators accounted for the remaining 17 holes. The other operators included Royale Energy (6 holes), Vintage Production (4 holes), ABA Energy (2 holes), and these one-holers: Bright Spot Oil & Gas, Capitol Oil, JCG Investors, Source Energy, and Sullivan Drilling. The holes were drilled by contractors Ensign, Paul Graham, Helmerich and Payne, and WW Drilling.

Many reworks were filed during the year. Bain and Cummings report that there were 462 rework filings with District 6 of the DOGGR during 2011, 309 by Venoco. This exceeded 2010, when 386 reworks were filed.

The basin produced a fair amount of gas during the year, totaling about 55 Bcf. Venoco, Inc. was the top producer with 31,935,047 Mcf from 610 wells in 2011, while Vintage Production, California placed second with 13,830,171 Mcf from 252 gas wells.

Rio Vista continued to be largest producing gas field in the valley, followed very closely by Grimes field. The biggest individual well during the year was the Venoco, Inc. 'Roaring River' # 20-4 at Van Sickle Island gas field, which averaged 5,220 Mcf/d during the year and cumed 1,905,263 Mcf.

The outlook for 2012 is not good. Low prices are expected to keep interest low, so drilling activity will likely be even less than it was in 2011.



PETROLOG
PETROLOG, INC.
JOHN T. WILLIAMS
Geologist, P.G.#5899, President
Geological Well Logging
P.O. BOX 7028
VENTURA, CA 93006
jtw@petrolog-geological.com
(805) 642-2847 • Fax(805) 980-5569 • Cell(805) 231-3793

GREGORY GEOLOGICAL SERVICES

Glenn J. Gregory
California Professional Geologist #3676

4800 Easton Drive, Suite 101
Bakersfield, CA 93309

(661) 633-5555
glenng@bak.rr.com



TIGHT OIL RESERVOIRS CALIFORNIA 2012

MONTEREY & SURROUNDING SEDIMENTS

May 30 - 31, 2012 | Hilton Double Tree Hotel | **Bakersfield** | Ca

Examining Geological Data From California's
Borderline Unconventional Oil Plays To
Determine the Most Effective
Completions & Recovery Strategies
For Exploiting Reserves



Over 20 Senior Industry Speakers Including:



Jere Jay
CEO
INNEX Energy



David Hoyt
VP Exploration & Development
Underground Energy



Bob Ballag
President
Eagle Exploration



Don Nelson
Vice President
Neon Energy



Scott Dobson
COO
NiMin Energy Corp.



Mark Wilson
Geology Manager
Santa Maria Pacific



Vince Ramirez
Managing Director
Hangtown Oil

Day One: Geological And Petrophysical Analysis
Of California's Fractured Monterey Shale And
Heterogeneous Tight Oil Reservoirs To Enable
Application Of Optimal Recovery Techniques

Day Two: Examining Optimal Completions
Strategies, Proven Oil Recovery Techniques
And The Regulatory Issues Affecting
Continued Development

Organized by

American Business Conferences



To Register: call (1) 800 721 3915 or email info@american-business-conferences.com

www.tight-oil-monterey-california-2012.com

This year PSAAPG had five teams participate in the Sectional Imperial Barrel Award Competition! It was very exciting to have three schools participate for the first time: University of Alaska Fairbanks, California State University Bakersfield, and California University Santa Barbara. Returning Schools this year were San Diego State University and California State University Long Beach. The Competition was held at Aera's office in Bakersfield, on March 23rd.

The teams were given a dataset including geology, geophysics, and production data, and they had 8 weeks to analyze the data. They then presented their findings to a panel of four industry judges. The competition was fierce, and **California State University Long Beach** took home the first place prize (\$1000 for their department). They very nicely represented PSAAPG at the Global IBA competition held at the AAPG Annual Convention in Long Beach.

We look forward to more teams and even better competition next year. Every year the teams improve, and the competition gets better.

We also want to thank our sponsors: Aera, Chevron, Chesapeake, Oxy, PSAAPG, ExxonMobil, Bob Williams, Alaska Geological Society, Microseismic, San Joaquin Geological Society, and Coast Geological Society. Without their support this event would not be possible. THANK YOU!

Cynthia Huggins & Cameron Campbell

First Place:

California State University Long Beach

Tom Kelty (Advisor)
Kristina Hill
Sergey Ishutov
Scott Kenyon
Heather Strickland
Annie Mosher

Second Place:

San Diego State University

Kip Herring (Advisor)
Karl Bloor
William Munson
Tim Pelbath
Nicole Velasco
Brendon Walker

Third Place:

University of Alaska Fairbanks

Catherine Hanks (Advisor)
Cheryle Sanders
Eric Hutton
Colby Wright
Ibrahim Ilhan
Nilesh Dixit

Honorable Mention:

California State University Bakersfield

Jan Gillespie (Advisor)
Greg Thompson
Jon Goodell
James Lopez
Ashleigh Blunt

University of California Santa Barbara

James Boles (Advisor)
Eryn Burkhart
Baird King
Jaron Lucero
Daniel Livsey
Dane Tikunoff



Western US/US Land/Wireline Systems

Sales: +1 661.334.3800 | Fax: +1 661.334.3808

Operations: +1 661.765.2020 | Fax: +1 661.765.2150

<http://www.bakerhughes.com> | Advancing Reservoir Performance

2012 PSAAPG Imperial Barrel Award Winning Teams

First Place- Cal State Long Beach



Second Place- San Diego State



Third Place- Alaska Fairbanks



See page 14 for team member names.



DHISERVICES

Formation Evaluation Specialists

www.dhiservices.com

Les Collins
Regional Operations Manager

2202 Zeus Court
Bakersfield, CA 93308
Tel: +1 (661) 588-8310
Fax: +1 (661) 588-8322
Cell: +1 (661) 742-2720
Email: lcollins@dhiservices.com

Alaska Geological Society

www.alaskageology.org

P. O. Box 101288
Anchorage, AK 99510

Contact: Tom Morahan
907.230.1672



Luncheon meetings are held monthly September through May, usually on the third Thursday of the month, at the BP Energy Center (1014 Energy Court) from 11:30 a.m. to 1:00 p.m. The hot lunch cost is \$20 for members with reservations; \$22 for non-members with reservations; and \$25 without reservations. The box lunch cost is \$13 for members with reservations, \$15 for non-members with reservations, and \$18 without reservations. For reservations, call the AGS reservation voice mail at 907-258-9059 or contact David Hite at hiteconsult@acsalaska.net by noon on Monday before the meeting.

President:	Ken Helmold	907.269.8673	ken.helmold@alaska.gov
President-Elect:	Steve Wright	907.263.7865	Sswr@chevron.com
Vice-President:	Dick Garrard	907.244.1067	Rgarrard@talisman-energy.com
Secretary:	Chad Hults	907.786.7417	chults@usgs.gov
Treasurer:	Alan Hunter	907.263.7947	alhunter@chevron.com
Past-President:	Tom Morahan	907.230.1672	tmorahan@petroak.com

Coast Geological Society

www.coastgeologicalsociety.org

P. O. Box 3055
Ventura, CA 93006

Contact: Mike Nelson
805.535.2058



Dinner meetings are held monthly September through May, usually on the third Tuesday of the month, at the Poinsettia Pavilion, 3451 Foothill Road in Ventura. Social hour starts at 6:00 p.m., dinner is served at 7:00 p.m., and the talk starts at 8:00 p.m. The cost of dinner with reservations is \$20 (members), \$25 (non-members), or \$10 (students and K-12 teachers); the talk is free. For reservations, please email Jerry Nichols (secretary@coastgeologicalsociety.org). Reservations should be made by 4:00 p.m. on the Friday before the meeting.

President:	Jon Schwalbach	805.648.8518	president@coastgeologicalsociety.org
Past President:	Mike Nelson	805.535.2058	pastpresident@coastgeologicalsociety.org
Vice President:	John Harris	805.407.7644	vicepresident@coastgeologicalsociety.org
Secretary:	Jerry Nichols	310.245.8897	secretary@coastgeologicalsociety.org
Treasurer:	Ed Magdaleno	805.535.2086	treasurer@coastgeologicalsociety.org

Los Angeles Basin Geological Society

www.labgs.org

515 So. Flower Street, Ste 4800
Los Angeles, CA 90071

Contact: Bill Long
213.225.5900 x 205



Luncheon meetings are held monthly September and October; and January through June, usually on the fourth Thursday of the month, in the Monarch Room at The Grand at Willow Street Conference Centre (4101 E. Willow Street) in Long Beach. Lunch is served at 11:30 a.m., and the talk starts at 12:15 p.m. The cost is \$20 (with reservations), \$25 (without reservations), or \$5 for students. Reservations can be made online at www.labgs.org or by contacting Marieke Gaudet at 562.624.3364 or marieke_gaudet@oxy.com. Reservations must be made prior to Tuesday before the meeting.

President:	Bill Long	213.225.0205	william.long@breitburn.com
Vice President:	Jean Kulla	949.500.3095	k2mobile@.com
Treasurer:	Bert Vogler	562.432.1696	hvogler@kleinfelder.com
Secretary:	Tawnya Hildabrand	562.624.3364	TawnyaHildabrand@gmail.com

Northern California Geological Society

www.ncgeolsoc.org

9 Bramblewood Court
Danville, CA 94506-1130

Contact: Barb Matz
Barbara.Matz@shawgrp.com



Evening meetings are held monthly September through May, usually on the last Wednesday of the month, at the Masonic Center (9 Altarinda Road) in Orinda. Social hour starts at 6:30 p.m., and the talk starts at 7:00 p.m. (no dinner). For reservations, contact Dan Day at danday94@pacbell.net before the meeting. Cost is \$5 per regular member; \$1 per student member; and \$1 per K-12 teachers.

Northwest Energy Association

www.nwenergyassociation.org

P. O. Box 6679
Portland, OR 97228-6679

Contact: Tim Blackwood
503.656.0156



Breakfast meetings are held monthly September through May, usually on the second Friday of the month, at the Multnomah Athletic Club (1849 SW. Salmon Street) in Portland. Meeting time is at 7:30 - 9:00 am. The cost is \$18. For information or reservations, contact Steve Walti.

President	Tim Blackwood	tblackwood@pacificgeotechnicalllc.com
Treasurer	Steve Walti	steven.walti@nwnatural.com

Sacramento Petroleum Association

P. O. Box 571
Sacramento, CA 95812-0571

Contact: David Hartley
530.304.4277



Luncheon meetings held monthly January through November, on the third Wednesday of the month. Location: Club Pheasant Restaurant in West Sacramento. The meetings starts at noon. The cost is \$16 - \$20. For information or reservations, contact Pam Ceccarelli.

President:	Jerry Reedy	916.486.2643	JWR5532@aol.com
Vice-President:	David Hartley	530.304.4277	drilmax1@aol.com
Secretary	Derek Jones	916.859.4710	djones@gasbiz.com
Editor/Treasurer	Pam Ceccarelli	916.439.0400	pc626@comcast.net

San Joaquin Geological Society

www.sjgs.com

P. O. Box 1056
Bakersfield, CA 93302

Contact: Tim Elam
paselam@peoplepc.com



We have dinner meetings on the second Tuesday of the month at the American Legion Hall at 2020 "H Street" in Bakersfield. There is an icebreaker at 6:00 pm, dinner at 7:00 pm, and a talk at 8:00 pm. Dinner is \$25.00 for members with reservations and \$30.00 for nonmembers and members without reservations, and the talks are free.

President:	Tim Elam	kyrocks@peoplepc.com
Past President:	Jack Grippi	JGrippi@aeraenergy.com
President-Elect:	Jeff Gartland	Jeff_Gartland@oxy.com
Vice-President:	Stefano Mazzoni	Stefano_Mazzoni@oxy.com
Secretary:	Ariel Auffant	AAuffant@chevron.com
Treasurer:	Kathy Smith	kathysmith@pacseis.com

- Images (graphics, photos, and scans) must be at least 300 dpi resolution. Text should be scanned at least 600 dpi.
- Scanned photos, illustrations (line art) or logos must be scanned at 300 dpi minimum and saved as a tiff or eps.
- Avoid clip-art and images from the internet. These images are low-resolution (72 dpi).

Advertising Rates

Members	Single Issue	Year (6 issues)
Full Page	\$400.00	\$1600.00
Half Page	\$250.00	\$1050.00
Quarter Page	\$150.00	\$650.00
Business Card		\$250.00

Societies Free Advertising

Convention Societies	Unlimited Space 1/4 Page	PSAAPG Newsletter AAPG Explorer
----------------------	-----------------------------	------------------------------------

Newsletter Deadline

July & August Issue

July 1st

CALL FOR PAPERS

SACRAMENTO BASIN PAPERS

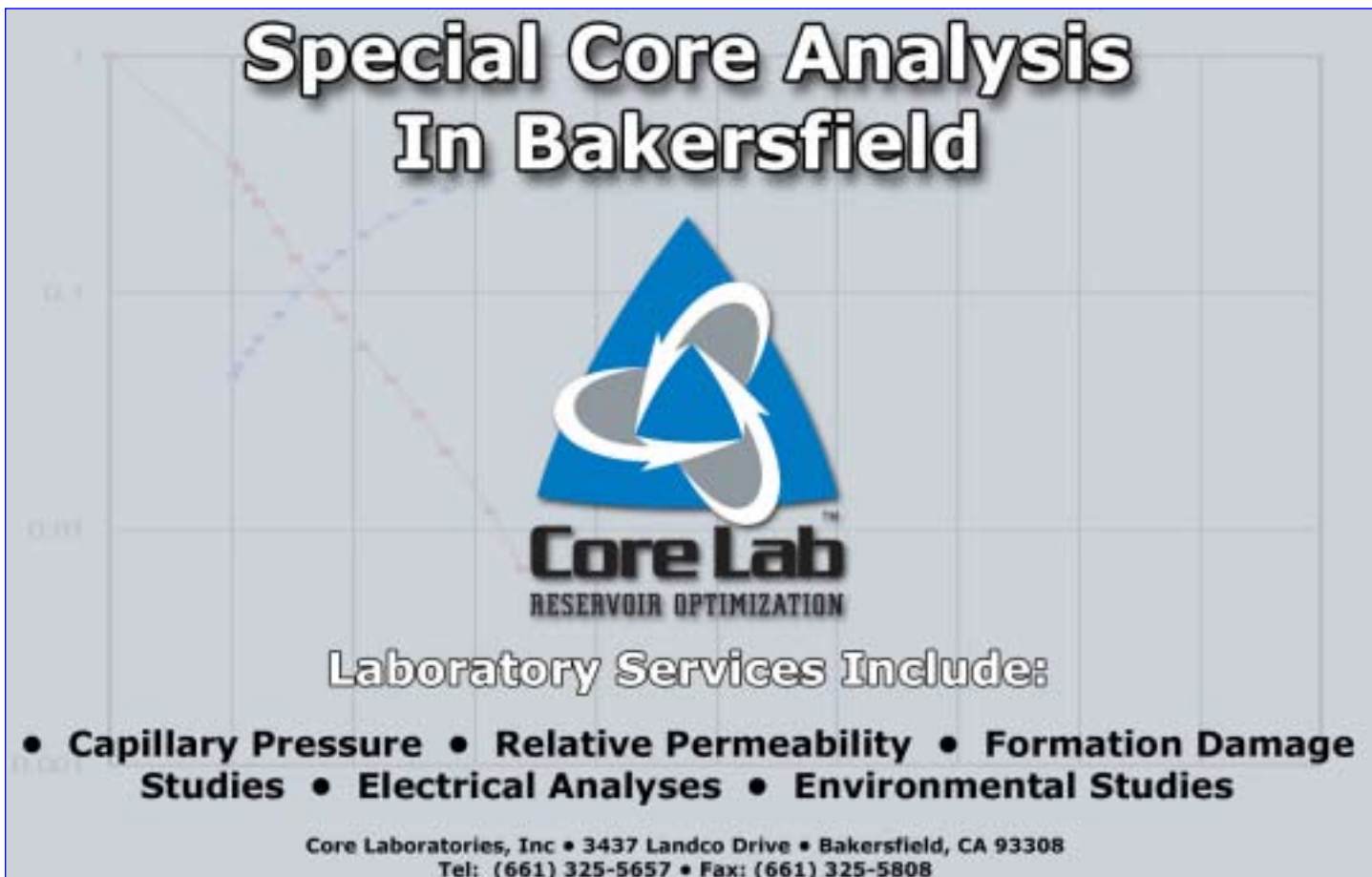
The PACIFIC SECTION OF THE ASSOCIATION OF PETROLEUM GEOLOGISTS ("PSAAPG") IS PLANNING TO HAVE PAPERS ON THE BASIN PUBLISHED ON A C.D. FOR SALE AT THE MONTEREY, CALIFORNIA CONVENTION IN 2013!

If YOU have a paper that you would like to submit, please forward it to Scott Hector (scott@hobbyenergy.com or scott.hector@gmail.com) for consideration. Please adhere to the following schedule for these papers:


1. May 1st 2012: Title of Paper (Extended!)
2. July 1st , 2012: Abstract of Paper
3. September 15th , 2012: Initial Submittal of Paper & Exhibits
4. November 1, 2012: Final Paper & Exhibits

The publication is presently planned to be:

CONTRIBUTIONS TO THE GEOLOGY OF THE SACRAMENTO BASIN, NORTHERN CALIFORNIA



**Special Core Analysis
In Bakersfield**



Core Lab
RESERVOIR OPTIMIZATION

Laboratory Services Include:

- Capillary Pressure • Relative Permeability • Formation Damage Studies • Electrical Analyses • Environmental Studies

Core Laboratories, Inc • 3437 Landco Drive • Bakersfield, CA 93308
Tel: (661) 325-5657 • Fax: (661) 325-5808



Photo courtesy of Andreas Mulch

Investing in Energy to Support Education and Research



“Today’s computational capacity and the availability of large volumes of data from ground-based observations and satellites offer new opportunities for understanding how the Earth system works and how human activities interact with Earth processes. The Stanford Center for Computational Earth and Environmental Science will enable the development of sophisticated models to address questions about energy and freshwater resources, natural hazards, climate change, and other global issues.”

Jerry M. Harris, Founding Director, Center for Computational Earth and Environmental Science, Professor and Former Chair, Department of Geophysics, Stanford University; Director, Stanford Wave Physics Laboratory; Past Distinguished Lecturer, Society of Exploration Geophysicists, American Association of Petroleum Geologists, and Society of Petroleum Engineers.

The alumni-managed Stanford Petroleum Investments Funds own, manage, and acquire producing oil and gas royalties and other energy investments. Income from these investments provides essential discretionary funding in support of energy and environmental education and research and other programs of the Stanford School of Earth Sciences. The Petroleum Investments Funds provided seed funding to help launch the Stanford Center for Computational Earth and Environmental Science.

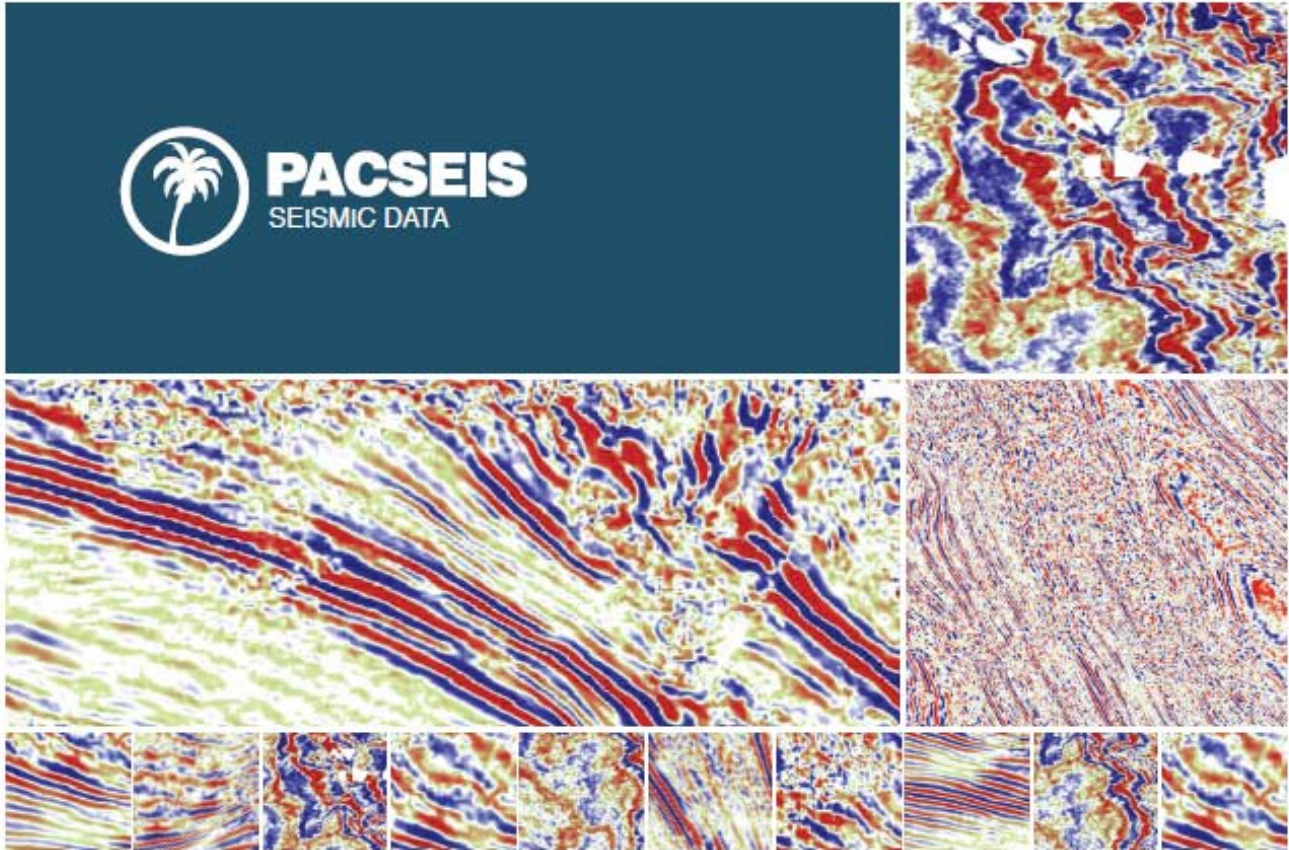
If you would like to sell or donate producing oil and gas royalties or learn more, visit <http://earthsci.stanford.edu/alumni/support/pif> or call or email David Gordon, Executive Administrator, Petroleum Investments Committee, Stanford School of Earth Sciences, at (650) 723-9777 or dsgordon@stanford.edu to see how you can help.





PACIFIC SECTION AAPG
P. O. Box 1072
BAKERSFIELD, CA 93302

PRESORTED
STANDARD
U.S. POSTAGE PAID
BAKERSFIELD, CA
PERMIT NO. 1163



PACIFIC SEISMIC COMPANY

The leader in subsurface information

RESOURCES THAT DELIVER THE DIFFERENCE

- One of the largest seismic databases available for license
- Seismic available for immediate license
Over 500,000 line miles of 2D data located in domestic United States (onshore & offshore)
- 2,500 square miles of 3D surveys

RECENTLY ACQUIRED SEISMIC DATABASES BY PACIFIC SEISMIC CO.

- Chevron USA California, OXY USA Nationwide (including Arco & Enron)
- Santa Fe energy, TXO, Cities Service Oil & Gas Nationwide
- Southern Pacific, PG&E/ NGC, SOHIO

PACIFIC SEISMIC COMPANY | Your Full-Service Seismic Brokerage & Acquisition Company

EXPLORATION CONSULTING

PROSPECT FINANCING

PROJECT DEVELOPMENT

Tel (661) 322-1171 | Fax (661) 322-1181 • www.pacseis.com | Bakersfield | Houston | Denver