



Pacific Petroleum Geology



NEWSLETTER

Pacific Section • American Association of Petroleum Geologists

March & April 2012



California in the Spotlight

Get More from your Core



With reservoirs becoming increasingly complex, you need the most accurate information you can get to better understand your reservoir.

Weatherford Labs helps you get more from your core by combining an unsurpassed global team of geoscientists, engineers, technicians and researchers with the industry's most comprehensive, integrated laboratory services worldwide. From core analysis, sorption, geochemistry and isotopic composition to detailed basin modeling and comprehensive data packages, we provide you with real reservoir rock and fluid information that hasn't been distilled by a simulator or iterated by software.

We call it "The Ground Truth™" – giving you the accurate answers you need for better reservoir understanding. You'll call it a better return on your reservoir investment. To learn more, contact TheGroundTruth@weatherfordlabs.com.



2011-2012 OFFICERS

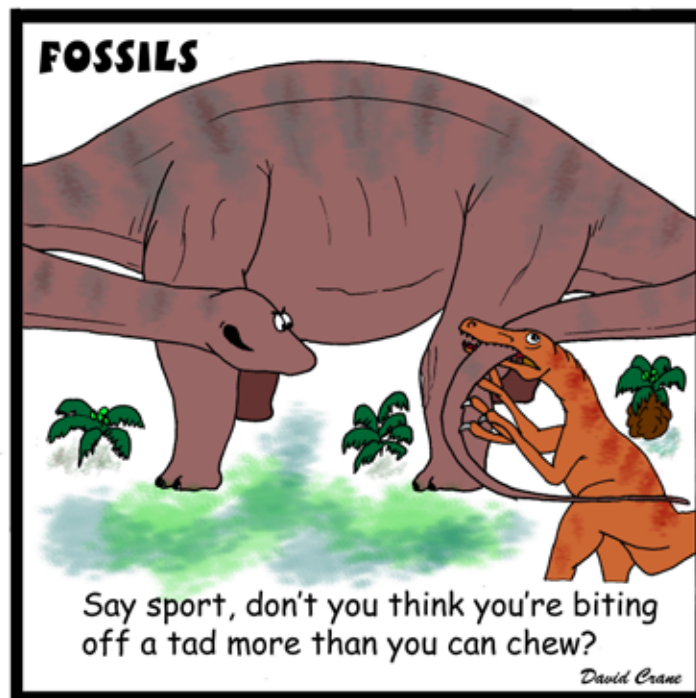
President	John Minch 805.898.9200 president@psaapg.org
President-Elect	Tony Reid 661.412.5467 president-elect@psaapg.org
Vice President	Greg Hummel 805.361.7104 vice-president@psaapg.org
Secretary	Becca Lanners 562.495.9310 secretary@psaapg.org
Treasurer 2010-2012	Jana McIntyre 661.869.8231 treasurer@psaapg.org
Treasurer 2011-2013	Jennifer Anderson 661.363.3226 treasurer@psaapg.org
Past President	Cynthia Huggins 661.665.5074 president@psaapg.org
Editor-in-Chief 2010-2012	Ed Washburn 661.654.7182 editor@psaapg.org

STAFF

Web Master	Bob Countryman 661.589.8580 webmaster@psaapg.org
Membership Chair	Evan Bargnesi 661.859.9713 membership@psaapg.org
Publications Chair	Larry Knauer 661.392.2471 publications@psaapg.org LarryKnauer@chevron.com
Advisory Council Representative 2009-2011	Kurt Neher 661.412.5203 kurt_neher@oxy.com

EVERY ISSUE

4	Message from the President • J. Minch
5	Editor's Corner • E. Washburn
7	PSAAPG News
10	Publications
12	Member Society News
THIS ISSUE	
6	Farewell to Friends
7	AAPG 2012 ACE • K. Pitts



Cover photo: Bridge-rail offset along the creeping San Andreas Fault and plate boundary sign at Parkfield, CA. Photos provided by the editor.

It seems that the year is slipping by and the 2012 National AAPG Annual Meeting in Long Beach (April 22-25) is close upon us. You still have time to save money by registering by April 2 at <AAPG.org/LongBeach2012>. Early registration is important to us as it helps us to better plan. Registration is doing well and we appear to be on track for a successful meeting.

Last issue I indicated that a very important reason for signing up early was the availability of hotel rooms. Well, they filled up. However, we were able to secure another block of rooms that are also filling up.



Most of the 19 field trips and 11 short courses will be run. Many filled up quickly. A very few were cancelled. There are some that could use a few more registrants. March 15 was the cutoff date so the FT and SC that made that date will be run. We are planning to run SC01 - Principles of Geologic Carbon Sequestration (PSAAPG/DEG) at a slight loss, it really needs a few more registrants to be healthy. I wish I had space to elaborate on each one. You can still take a look at the field trips, technical sessions and short courses by logging onto our website (psaapg.org) and following the links to the convention.

We need judges for the various sessions. You can still sign up even if you have already registered. Just go to the convention site and click on convention (on the bar under the slides), then click on volunteer judges and sign up. We will appreciate your help.

One of the most important elements of our society is the elected officers and committee representatives. We have several elections at hand and more to come. Everyone should vote! Many should run! The ballot for the election of the AAPG National Officers is in your mailbox. We have one Pacific Section Member as a candidate for President-elect, 2012-2013. The nominations for PacSec AAPG executive committee officers are still open. If you are interested contact Cynthia Huggins at cahuggins@aeraenergy.com and throw your hat in the ring.

Another important election ballot that will soon be in your mailbox is for the Pacific Section representative to the National Advisory Council. Next to the Executive Committee this is the most important AAPG National Committee. We need to be well represented. Besides advising the Executive Committee on important matters, the AC vets and nominates National Officers and bestows honors on deserving members. This year we have four enthusiastic candidates for the AC. They are; Jonathan Allen, Joan R. Barminski, Jon Schwalbach, and Tim Elam. I am having a hard time deciding whom to vote for.

This year at the National AAPG Annual Meeting, Mitch Harris will receive a National AAPG Honorary Membership and Mark Wilson will receive the National AAPG Distinguished Service Award. My congratulations to them. They join an august cadre of Pacific Section AAPG Members.

Election season is upon us again. Watch your mailboxes for ballots from your local geological societies and the PSAAPG. Spending the small amount of time necessary to fill out the ballots and get them back in the mail right away will avoid the possibility of it getting lost in a pile of papers on your desk, so don't delay!

Also keep in mind that serving as an elected officer is not the only way to be involved in your local societies or the Pacific Section. Working as a committee member or chair, volunteering at special events (such as being a judge at the annual convention), reaching out to new geologists and introducing them to our organizations, and even simply attending monthly meetings to interact with your fellow society/section members are all vital to our success and growth.



SCOTT M. MOSSMAN
SENIOR GEOPHYSICIST
GRAVITY & MAGNETIC CONSULTING

(303) 875-2360
scmossman@gmail.com
www.smgmconsulting.com

610 Santa Monica Blvd. 203
Santa Monica, CA 90401

Ralph J. Goehring, CEO



Your outsource accounting solution.

*Outsource your oil and gas accounting to us.
Specialists in energy and pre-IPO accounting.*

(661) 952-7789 **www.SandDollarOutsource.com**

PAYZONE INC.
Geological, Geophysical, and Petrophysical Consulting Services for the Petroleum Industry **661-387-1715**

- Training in advanced log analysis focused on California
- Accurate, consistent fieldwide reservoir properties for modeling
- Old E-Log Interpretation
- Rock properties from sand/diatomite/shale sequences
- Log data management/digital log database cleanup
- 2D/3D seismic interpretation, specializing in old 2D data

Our petrophysical models for diatomite and California sands are based on over 30 years of experience with these rocks, including core, log, and lithology data from every basin in the state

Deborah Olson, President
dolson@payzoneinc.com
661-747-0375

Now Offering Image Log Interpretation Services!

Tom Howard, Image Analyst
tomh@payzoneinc.com
832-407-2862

www.payzoneinc.com

Marty Hall
US Marketing / Sales Manager

7765 Windwood Way
P.O. Box 549
Parker, CO 80134
USA

P: +1(720) 851.6152
F: +1(720) 851.6153
C: +1(303) 885.8860

Geokinetics
geokinetics.com
marty.hall@geokinetics.com

**FORT DAVIS PALEONTOLOGIC
& STRATIGRAPHIC CONSULTANTS**

William G. Reay

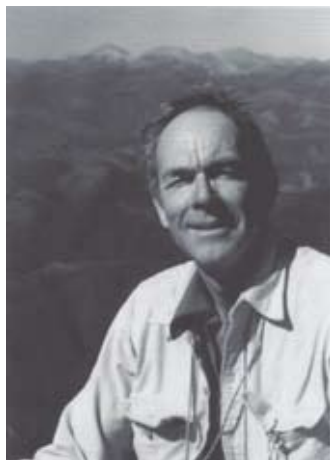
112 Arabella Dr
Fort Davis, TX, 79734
432.426.2443
wgreay@mztv.net

Age dating and environmental determinations of the LA Basin, the Ventura Basin, the San Joaquin and Sacramento sections, as well as the Alaskan Cook Inlet and Post Paleozoic North Slopes section

A TRIBUTE TO NORMAN J. SILBERLING

(1928-2011)

by Robert B. Blodgett



This note honors Norman J. Silberling, an outstanding geologist who has done much to further the knowledge of Alaskan and Cordilleran tectonics, as well as Triassic paleontology.

Norm was born November 28, 1928 in Oakland, California, and received a Ph.D. in geology at Stanford University, where he was a student of Si Mueller. Norm served in the U.S. Navy during the Korean War and received two combat stars.

His career included work at both the Branch of Paleontology and Stratigraphy of the U.S. Geological Survey, and on the faculty of Stanford University. He was pre-eminent for his work on Triassic ammonoids and flat-clams (including monotids, Halobia, and Daonella), Triassic stratigraphy of the western U.S., as well as in structural geology, where he was one of the early leading proponents of terrane analysis of the western North American Cordillera. Together with Davy Jones, a Cretaceous paleontological specialist with the USGS, they named the vast majority of tectonostratigraphic terranes recognized in Alaska.

Norm passed away on September 27, 2011 in Lakewood, Colorado. He is survived by his widow, Kathryn M. Nichols, also a geologist and long-standing colleague. He will be sorely missed by a numbers of paleontologists who have vastly benefited from his sage and fatherly advice, including myself, George Stanley, Jr., Christopher McRoberts, Michael Sandy, Spencer Lucas, and Mike Orchard, and numerous other Triassophiles.

Editor's note: A complete bibliography of Dr. Silberling's publications (provided by Bob Blodgett) underscores the title of "Geologist" with topics including geologic mapping, paleontology, structural geology, tectonics, stratigraphy, and igneous petrology. He is credited with 145 publications from 1956-2002, spanning the western margin of North America, with extensive work in Nevada, Alaska, California, and Utah.



GEOLOGICAL LOGGING INC.
9229 Beatty Drive, Suite B
Sacramento, CA 95826
Telephone 916-452-9570
Cell 952-8975 Fax 452-9573
geolog@sbcglobal.net

ERNIE BURROUGHS
President/Owner
Registered Geologist No. 1628



RESERVOIR CHARACTERIZATION
GEOLOGY
PETROPHYSICS
DATABASE MANAGEMENT
DIGITIZING & SCANNING

EarthQuest Technical Services, LLC

David R. Walter

drwalter@eqtservices.com
www.eqtservices.com

2201 'F' Street
Bakersfield, CA 93301
661•321•3136



Lights! Camera Action! ACE 2012!

The 2012 Annual Convention and Exhibition that will be held in Long Beach, CA from April 22–25 will be another terrific event brought to you by AAPG and the volunteer organization and technical program cast. The excitement is mounting as our geoscience community is anticipating learning, sharing, and networking at the oral and poster technical sessions, field trips, and short courses. The Exhibition Hall will, as always, offer you a peak at the state of the art technologies and favorite vendors and publication purveyors.

Registration – At six weeks before the start of the convention we have 3,492 registrants - slightly above the 2010 New Orleans registration, 740 above the 2007 Long Beach meeting, and only 470 below last year's Houston registration at this time.

Technical Program – The committee was very pleased with the number of top quality submittals received - 1383 abstracts. We expanded the poster space and sessions as much as possible, but could only accept 79%. We regret not being able to include several highly regarded authors and talks. We were able to accept 417 oral presentations and 669 posters for 53 oral sessions and 58 poster sessions. The Technical Program Committee came together as a highly functioning team to assemble the technical program. We appreciated the flexibility and understanding offered from the Theme Chairs.

Short Courses – Eleven short courses were offered, at this time seven are sold out, or are a “go”.

Field Trips – As we have seen in the past, field trips are a priority for attendees in California. Of the twenty field trips that were offered, twelve are sold out, and an additional six are a “go” for a 90% early registration success rate.

Sponsorship – As of March 12 (six weeks before the convention) we have \$771,100 raised in total sponsorship. This compares to \$663,000 raised for the 2011 ACE in Houston at the same time. Join me in a standing ovation for Larry Knauer for leading this effort.

Speakers – All of the luncheon speakers are bringing perspectives on topics of immediate interest to the membership. “Robin” West, the All Convention Luncheon Speaker, has served on the White House staff and advised international and national oil and gas companies. He brings a global view on the state and politics of our industry. The DPA/PROWESS luncheon panel features Sally Benson (Stanford University Global Climate and Energy Project) and Sharon Mosher (Jackson School of Geosciences at The University of Texas). DEG brings Steve Leifer to the table on “Hydraulic Fracturing: Separating Myth from Reality.” The EMD is exploring alternative energy with Lee Allison on Geothermal Exploration. SEPM's speaker from 2011, John Grotzinger (Cal Tech and JPL) is our Michel T. Halbouty Lecture speaker with an introduction by Jim Reilly.

Other Highlights –

Our future can be directed through understanding our past. The History of Petroleum Geology Forum on Sunday offers five talks with a global exploration perspective ranging from 1843 Poland to China.

The Discovery Thinking Forum on “New Discoveries in Old Areas” is sure to play to a full house. The kick-off talk is from Oxy geologists on the prospect that is bringing companies from around the world to explore California again – the Gunslinger discovery. Unconventional discoveries from the Wolfberry, Bakken, and Granite Wash are also highlighted in this forum.

The AAPG Distinguished Ethics Lecturer, “Rusty” Riese, will encourage you to explore ideas with his talk on “Oil Spills, Ethics and Society – How They Intersect and Where the Responsibilities Reside.”


A special treat is a showing of the AAPG Foundation-funded documentary “Switch” at the Cinemark movie theatre adjacent to the Convention Center. Past AAPG President Scott Tinker guides the viewer to answer the question “What will it really take to make the transition from oil and coal to alternative energy resources?” You may recognize this documentary from the working title “The Bridge.”

Credits – The convention will be a blockbuster due to the starring roles played by Larry Knauer (General Co-Chair) and Technical Program Co-Chairs Gene Fritsche and Kurt Neher. Key supporting roles were played on the technical side by Stefano Mazzoni (Field Trips), Heidi Hoffower (Short Courses), Marieke Gaudet (Posters), Dalton Lockman and Dan Schwartz (Technical Advisory Committee liaisons and AAPG Technical Vice Chairs), Jon Allen (AAPG Oral Sessions), Gareth Jones (SEPM Vice Chair), Stephen Testa (EMD Vice Chair), and Paul Britt and Bob Countryman (DPA Vice Chairs).

Bob Ballog (Teacher Program), Jeff Gartland and Terry Thompson (Judging), Linda Specht (Guest Program), Dave DeFelice (Student Volunteers), and Cynthia Huggins all deserve awards for their service coordinating the “other” programs that reach out and provide the glue that makes a convention successful.

I am very grateful to all of the above, the rest of the committee members and AAPG Staff for their extraordinary work, and for the opportunity to collaborate with them on this convention. It has been an extraordinary experience!





PETROLOG
PETROLOG, INC.
JOHN T. WILLIAMS
 Geologist, P.G.#5899, President
Geological Well Logging
 P.O. BOX 7028
 VENTURA, CA 93006
jtw@petrolog-geological.com
 (805) 642-2847 • Fax(805) 980-5569 • Cell(805) 231-3793

GREGORY GEOLOGICAL SERVICES

Glenn J. Gregory
 California Professional Geologist #3676

4800 Easton Drive, Suite 101
 Bakersfield, CA 93309

(661) 633-5555
glenng@bak.rr.com



TIGHT OIL RESERVOIRS CALIFORNIA 2012

MONTEREY & SURROUNDING SEDIMENTS

May 30 - 31, 2012 | Hilton Double Tree Hotel | **Bakersfield** | Ca

Examining Geological Data From California's
Borderline Unconventional Oil Plays To
Determine the Most Effective
Completions & Recovery Strategies
For Exploiting Reserves



Over 20 Senior Industry Speakers Including:



Jere Jay
CEO
INNEX Energy



David Hoyt
VP Exploration & Development
Underground Energy



Bob Ballag
President
Eagle Exploration



Don Nelson
Vice President
Neon Energy



Scott Dobson
COO
NiMin Energy Corp.



Mark Wilson
Geology Manager
Santa Maria Pacific



Vince Ramirez
Managing Director
Hangtown Oil

Day One: Geological And Petrophysical Analysis
Of California's Fractured Monterey Shale And
Heterogeneous Tight Oil Reservoirs To Enable
Application Of Optimal Recovery Techniques

Day Two: Examining Optimal Completions
Strategies, Proven Oil Recovery Techniques
And The Regulatory Issues Affecting
Continued Development

Organized by

American Business Conferences



To Register: call (1) 800 721 3915 or email info@american-business-conferences.com

www.tight-oil-monterey-california-2012.com

Stanford University Geologic Studies of the San Joaquin Basin, 1980-2010

Stephan A. Graham, W.J. and M.L. Crook Professor
School of Earth Sciences, Stanford University, Stanford, California

The dissertations reproduced on this DVD largely predate the digital era, so many have been scanned from original hard copies of variable states of preservation; as a result, the quality varies in this product. The original dissertations are on file and accessible to the public at Branner Earth Sciences Library, School of Earth Sciences, Stanford University. Scans for this DVD derive from two sources. Some were produced as part of a program at Stanford to digitize all older dissertations, with thanks to Julie Sweetkind-Singer, (Acting Head Librarian) and her staff at Branner Library, for facilitating access to previously scanned dissertations. However, the majority of the dissertations in this collection were scanned pro bono by PayZone, Inc. of Bakersfield, thanks to the considerable efforts of Deborah Olson and her colleagues. Larry Knauer, Pacific Section AAPG, encouraged and facilitated production of the DVD. Ultimately, principal credit for this compilation goes to Deborah Olson, who first suggested the idea of this DVD in order to facilitate greater public access to these dissertations, because most were previously unpublished or published in regional publications of limited circulation. This body of research would not have been possible without the support of the San Joaquin Project consortium member companies, which over time included: Amerada-Hess, Amoco, Arco, BP Alaska, Champlin, Chevron, Cities, Conoco, Exxon, Getty, Gulf, Husky, Marathon, Mobil, Natural Gas Corp, Occidental, Phillips, Santa Fe Energy, Shell, Sohio, Superior, Tenneco, Texaco, and Unocal.

A 2-DVD set containing the information described above may be purchased from the Pacific Section American Association of Petroleum Geologists (PSAAPG) Publications Committee for \$50.00 by contacting (and including a check or credit card information and a shipping address)

PSAAPG Publications
P.O. Box 1072
Bakersfield, CA 93302

or

Larry Knauer (Publications Chair)
larryknauer@chevron.com
661-392-2471



Western US/US Land/Wireline Systems

Sales: +1 661.334.3800 | Fax: +1 661.334.3808

Operations: +1 661.765.2020 | Fax: +1 661.765.2150

<http://www.bakerhughes.com> | Advancing Reservoir Performance



Photo courtesy of Andreas Mulch

Investing in Energy to Support Education and Research



“Today’s computational capacity and the availability of large volumes of data from ground-based observations and satellites offer new opportunities for understanding how the Earth system works and how human activities interact with Earth processes. The Stanford Center for Computational Earth and Environmental Science will enable the development of sophisticated models to address questions about energy and freshwater resources, natural hazards, climate change, and other global issues.”

Jerry M. Harris, Founding Director, Center for Computational Earth and Environmental Science, Professor and Former Chair, Department of Geophysics, Stanford University; Director, Stanford Wave Physics Laboratory; Past Distinguished Lecturer, Society of Exploration Geophysicists, American Association of Petroleum Geologists, and Society of Petroleum Engineers.

The alumni-managed Stanford Petroleum Investments Funds own, manage, and acquire producing oil and gas royalties and other energy investments. Income from these investments provides essential discretionary funding in support of energy and environmental education and research and other programs of the Stanford School of Earth Sciences. The Petroleum Investments Funds provided seed funding to help launch the Stanford Center for Computational Earth and Environmental Science.

If you would like to sell or donate producing oil and gas royalties or learn more, visit <http://earthsci.stanford.edu/alumni/support/pif> or call or email David Gordon, Executive Administrator, Petroleum Investments Committee, Stanford School of Earth Sciences, at (650) 723-9777 or dsgordon@stanford.edu to see how you can help.



Headline News

Alaska Geological Society

April 19 Luncheon- Craig Knutson & Andy Bond, "Geology and Reservoirs of the Oooguruk Field"

Coast Geological Society

March 20 Meeting- James R. Boles, "Modern Oil Generation and Pyrolysis at >800C from Spontaneous Combustion in a Landslide of Miocene Shale, California"

L.A. Basin Geological Society

March 29 Meeting- Speaker Mark Legg

Vice President Position Filled by Jean Kulla

Northern California Geological Society

April 25 Meeting- Dr. Ray Sullivan, "Basin Floor to Shelf, the Lower Tertiary Sequences in the Sacramento Basin"

May 30 Dinner Meeting- Dr. Geoff Marcy, "The Hunt for Another Earth"

Northwest Energy Association

Next Breakfast Meeting- April 13

Looking for Officers and Company Sponsorships

Sacramento Petroleum Association

March 21 Meeting, Speaker Roland Bain, Annual Review of Natural Gas Drilling in the Sac Valley

SPA Membership Dues are ... Due

San Joaquin Geological Society

Lunch Meeting March 21- Don Paul, "Global Energy Trends"

Next Meeting April 10- CSUB Student Research Night

May 8 Meeting- Bob Stupp & Ingvar Alarik, "Re-Discovering California: The Gunslinger Discovery and the Monterey Formation in the San Joaquin Basin"



DHISERVICES

Formation Evaluation Specialists

www.dhiservices.com

Les Collins

Regional Operations Manager

2202 Zeus Court
Bakersfield, CA 93308
Tel: +1 (661) 588-8310
Fax: +1 (661) 588-8322
Cell: +1 (661) 742-2720
Email: lcollins@dhiservices.com

Alaska Geological Society

www.alaskageology.org

P. O. Box 101288
Anchorage, AK 99510

Contact: Tom Morahan
907.230.1672



Luncheon meetings are held monthly September through May, usually on the third Thursday of the month, at the BP Energy Center (1014 Energy Court) from 11:30 a.m. to 1:00 p.m. The hot lunch cost is \$20 for members with reservations; \$22 for non-members with reservations; and \$25 without reservations. The box lunch cost is \$13 for members with reservations, \$15 for non-members with reservations, and \$18 without reservations. For reservations, call the AGS reservation voice mail at 907-258-9059 or contact David Hite at hiteconsult@acsalaska.net by noon on Monday before the meeting.

President:	Ken Helmold	907.269.8673	ken.helmold@alaska.gov
President-Elect:	Steve Wright	907.263.7865	Sswr@chevron.com
Vice-President:	Dick Garrard	907.244.1067	Rgarrard@talisman-energy.com
Secretary:	Chad Hults	907.786.7417	chults@usgs.gov
Treasurer:	Alan Hunter	907.263.7947	alhunter@chevron.com
Past-President:	Tom Morahan	907.230.1672	tmorahan@petroak.com

Coast Geological Society

www.coastgeologicalsociety.org

P. O. Box 3055
Ventura, CA 93006

Contact: Mike Nelson
805.535.2058



Dinner meetings are held monthly September through May, usually on the third Tuesday of the month, at the Poinsettia Pavilion, 3451 Foothill Road in Ventura. Social hour starts at 6:00 p.m., dinner is served at 7:00 p.m., and the talk starts at 8:00 p.m. The cost of dinner with reservations is \$20 (members), \$25 (non-members), or \$10 (students and K-12 teachers); the talk is free. For reservations, please email Jerry Nichols (secretary@coastgeologicalsociety.org). Reservations should be made by 4:00 p.m. on the Friday before the meeting.

President:	Jon Schwalbach	805.648.8518	president@coastgeologicalsociety.org
Past President:	Mike Nelson	805.535.2058	pastpresident@coastgeologicalsociety.org
Vice President:	John Harris	805.407.7644	vicepresident@coastgeologicalsociety.org
Secretary:	Jerry Nichols	310.245.8897	secretary@coastgeologicalsociety.org
Treasurer:	Ed Magdaleno	805.535.2086	treasurer@coastgeologicalsociety.org

Los Angeles Basin Geological Society

www.labgs.org

515 So. Flower Street, Ste 4800
Los Angeles, CA 90071

Contact: Bill Long
213.225.5900 x 205



Luncheon meetings are held monthly September and October; and January through June, usually on the fourth Thursday of the month, in the Monarch Room at The Grand at Willow Street Conference Centre (4101 E. Willow Street) in Long Beach. Lunch is served at 11:30 a.m., and the talk starts at 12:15 p.m. The cost is \$20 (with reservations), \$25 (without reservations), or \$5 for students. Reservations can be made online at www.labgs.org or by contacting Marieke Gaudet at 562.624.3364 or marieke_gaudet@oxy.com. Reservations must be made prior to Tuesday before the meeting.

President:	Bill Long	213.225.0205	william.long@breitburn.com
Vice President:	Jean Kulla	949.500.3095	k2mobile@.com
Treasurer:	Bert Vogler	562.432.1696	hvogler@kleinfelder.com
Secretary:	Tawnya Hildabrand	562.624.3364	TawnyaHildabrand@gmail.com

Northern California Geological Society

www.ncgeolsoc.org

9 Bramblewood Court
Danville, CA 94506-1130

Contact: Barb Matz
Barbara.Matz@shawgrp.com



Evening meetings are held monthly September through May, usually on the last Wednesday of the month, at the Masonic Center (9 Altarinda Road) in Orinda. Social hour starts at 6:30 p.m., and the talk starts at 7:00 p.m. (no dinner). For reservations, contact Dan Day at danday94@pacbell.net before the meeting. Cost is \$5 per regular member; \$1 per student member; and \$1 per K-12 teachers.

Northwest Energy Association

www.nwenergyassociation.org

P. O. Box 6679
Portland, OR 97228-6679

Contact: Tim Blackwood
503.656.0156



Breakfast meetings are held monthly September through May, usually on the second Friday of the month, at the Multnomah Athletic Club (1849 SW. Salmon Street) in Portland. Meeting time is at 7:30 - 9:00 am. The cost is \$18. For information or reservations, contact Steve Walti.

President	Tim Blackwood	tblackwood@pacificgeotechnicalllc.com
Treasurer	Steve Walti	steven.walti@nwnatural.com

Sacramento Petroleum Association

P. O. Box 571
Sacramento, CA 95812-0571

Contact: David Hartley
530.304.4277



Luncheon meetings held monthly January through November, on the third Wednesday of the month. Location: Club Pheasant Restaurant in West Sacramento. The meetings starts at noon. The cost is \$16 - \$20. For information or reservations, contact Pam Ceccarelli.

President:	Jerry Reedy	916.486.2643	JWR5532@aol.com
Vice-President:	David Hartley	530.304.4277	drilmax1@aol.com
Secretary	Derek Jones	916.859.4710	djones@gasbiz.com
Editor/Treasurer	Pam Ceccarelli	916.439.0400	pc626@comcast.net

San Joaquin Geological Society

www.sjgs.com

P. O. Box 1056
Bakersfield, CA 93302

Contact: Tim Elam
paselam@peoplepc.com



We have dinner meetings on the second Tuesday of the month at the American Legion Hall at 2020 "H Street" in Bakersfield. There is an icebreaker at 6:00 pm, dinner at 7:00 pm, and a talk at 8:00 pm. Dinner is \$25.00 for members with reservations and \$30.00 for nonmembers and members without reservations, and the talks are free.

President:	Tim Elam	kyrocks@peoplepc.com
Past President:	Jack Grippi	JGrippi@aeraenergy.com
President-Elect:	Jeff Gartland	Jeff_Gartland@oxy.com
Vice-President:	Stefano Mazzoni	Stefano_Mazzoni@oxy.com
Secretary:	Ariel Auffant	AAuffant@chevron.com
Treasurer:	Kathy Smith	kathysmith@pacseis.com

- Images (graphics, photos, and scans) must be at least 300 dpi resolution. Text should be scanned at least 600 dpi.
- Scanned photos, illustrations (line art) or logos must be scanned at 300 dpi minimum and saved as a tiff or eps.
- Avoid clip-art and images from the internet. These images are low-resolution (72 dpi).

Advertising Rates

Members	Single Issue	Year (6 issues)
Full Page	\$400.00	\$1600.00
Half Page	\$250.00	\$1050.00
Quarter Page	\$150.00	\$650.00
Business Card		\$250.00

Societies Free Advertising

Convention Societies	Unlimited Space 1/4 Page	PSAAPG Newsletter AAPG Explorer
----------------------	-----------------------------	------------------------------------

Newsletter Deadline

May & June Issue

May 1st

SHALE RESERVOIR CHARACTERIZATION SCHOOL



A two-day school covering the critical elements of shale reservoir characterization and evaluation

May 15-16, 2012

Bakersfield Petroleum Club
5060 California Avenue
Bakersfield, CA 93309

© 2012 Core Laboratories. All rights reserved.

For Information and to Register Online:

www.corelab.com/rm/irs/training/Shale-School.aspx

Special Core Analysis In Bakersfield



Core Lab
RESERVOIR OPTIMIZATION

Laboratory Services Include:

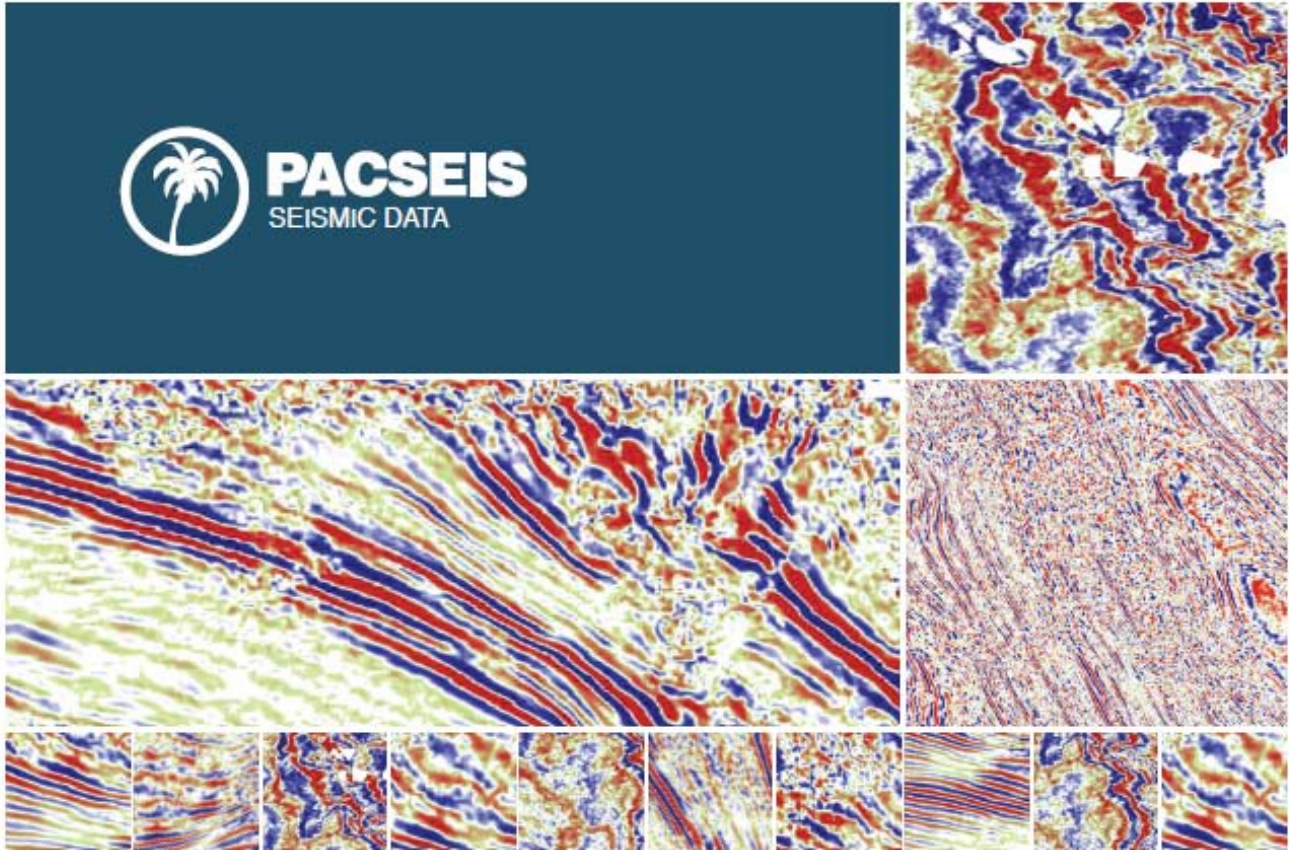
- Capillary Pressure
- Relative Permeability
- Formation Damage Studies
- Electrical Analyses
- Environmental Studies

Core Laboratories, Inc • 3437 Landco Drive • Bakersfield, CA 93308
Tel: (661) 325-5657 • Fax: (661) 325-5808



PACIFIC SECTION AAPG
P. O. Box 1072
BAKERSFIELD, CA 93302

PRESORTED
STANDARD
U.S. POSTAGE PAID
BAKERSFIELD, CA
PERMIT NO. 1163



PACIFIC SEISMIC COMPANY

The leader in subsurface information

RESOURCES THAT DELIVER THE DIFFERENCE

- One of the largest seismic databases available for license
- Seismic available for immediate license
Over 500,000 line miles of 2D data located in domestic United States (onshore & offshore)
- 2,500 square miles of 3D surveys

RECENTLY ACQUIRED SEISMIC DATABASES BY PACIFIC SEISMIC CO.

- Chevron USA California, OXY USA Nationwide (including Arco & Enron)
- Santa Fe energy, TXO, Cities Service Oil & Gas Nationwide
- Southern Pacific, PG&E/ NGC, SOHIO

PACIFIC SEISMIC COMPANY | Your Full-Service Seismic Brokerage & Acquisition Company

EXPLORATION CONSULTING

PROSPECT FINANCING

PROJECT DEVELOPMENT

Tel (661) 322-1171 | Fax (661) 322-1181 • www.pacseis.com | Bakersfield | Houston | Denver