



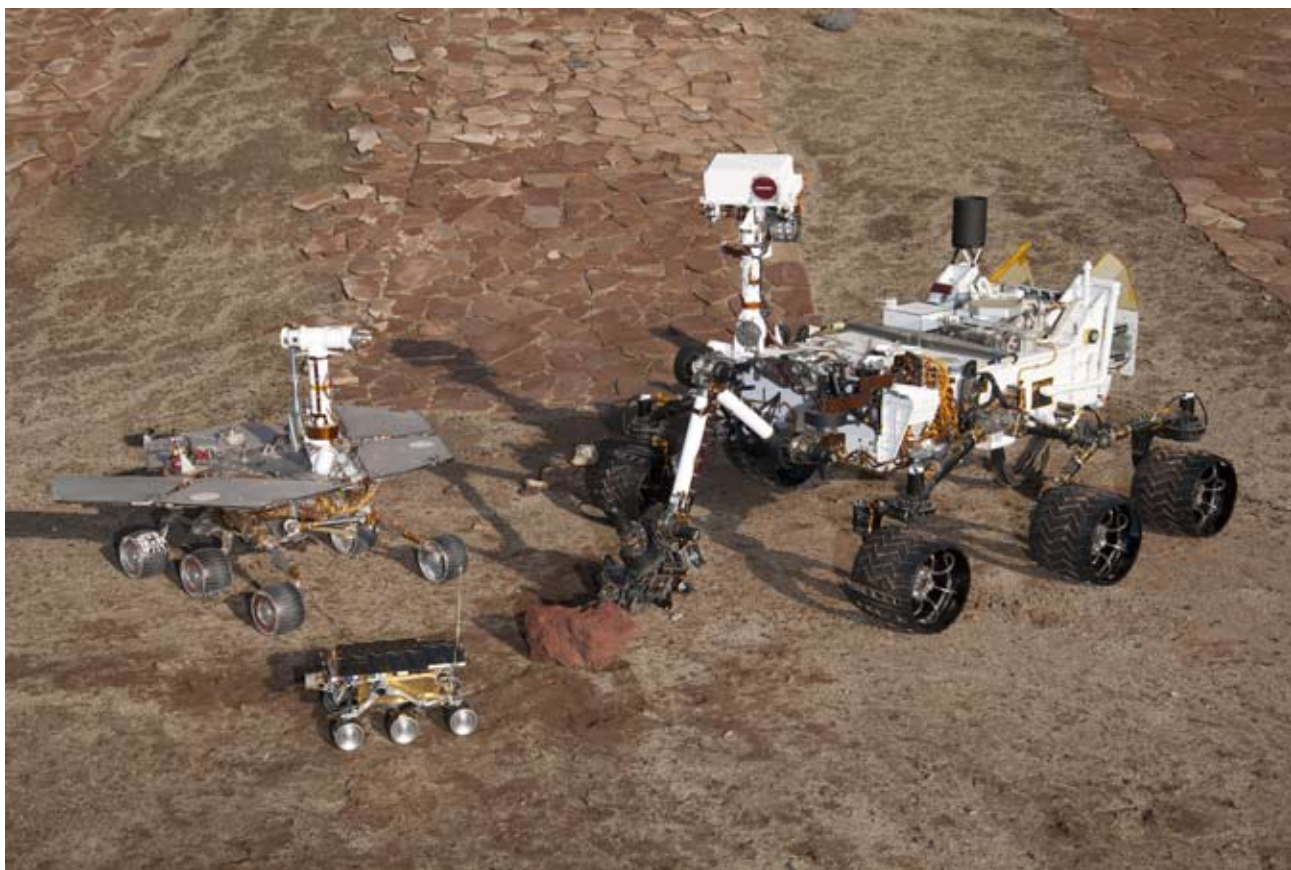
Pacific Petroleum Geology



NEWSLETTER

Pacific Section • American Association of Petroleum Geologists

January & February 2012



Evolution

Get More from your Core



With reservoirs becoming increasingly complex, you need the most accurate information you can get to better understand your reservoir.

Weatherford Labs helps you get more from your core by combining an unsurpassed global team of geoscientists, engineers, technicians and researchers with the industry's most comprehensive, integrated laboratory services worldwide. From core analysis, sorption, geochemistry and isotopic composition to detailed basin modeling and comprehensive data packages, we provide you with real reservoir rock and fluid information that hasn't been distilled by a simulator or iterated by software.

We call it "The Ground Truth™" – giving you the accurate answers you need for better reservoir understanding. You'll call it a better return on your reservoir investment. To learn more, contact TheGroundTruth@weatherfordlabs.com.



2011-2012 OFFICERS

President	John Minch 805.898.9200 president@psaapg.org
President-Elect	Tony Reid 661.412.5467 president-elect@psaapg.org
Vice President	Greg Hummel 805.361.7104 vice-president@psaapg.org
Secretary	Becca Lanners 562.495.9310 secretary@psaapg.org
Treasurer 2010-2012	Jana McIntyre 661.869.8231 treasurer@psaapg.org
Treasurer 2011-2013	Jennifer Anderson 661.363.3226 treasurer@psaapg.org
Past President	Cynthia Huggins 661.665.5074 president@psaapg.org
Editor-in-Chief 2010-2012	Ed Washburn 661.654.7182 editor@psaapg.org

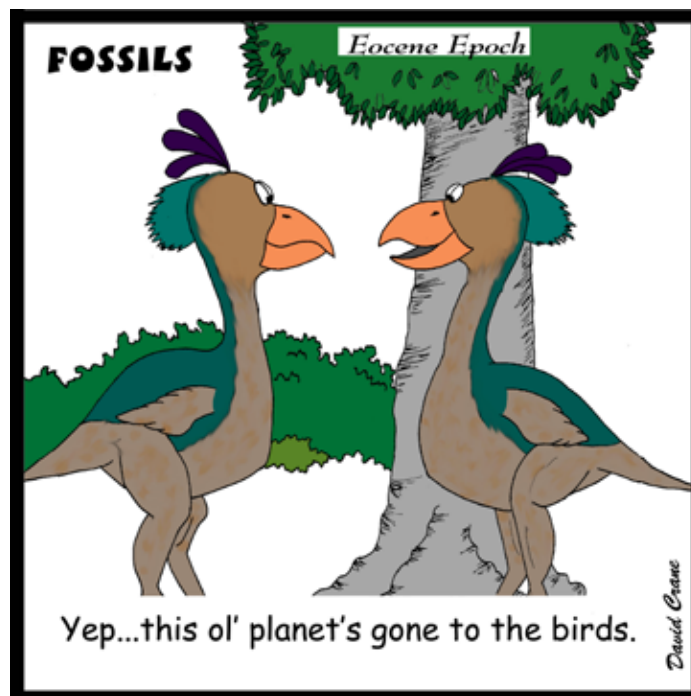
STAFF

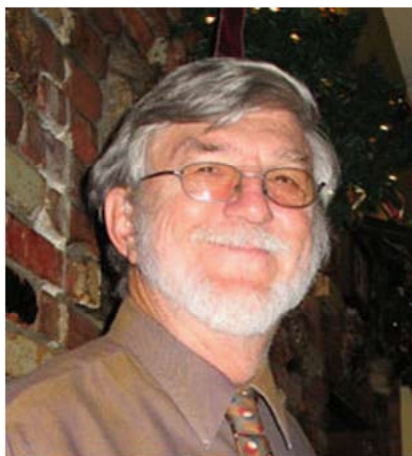
Web Master	Bob Countryman 661.589.8580 webmaster@psaapg.org
Membership Chair	Emily Loera 661.859.9713 membership@psaapg.org
Publications Chair	Larry Knauer 661.392.2471 publications@psaapg.org LarryKnauer@chevron.com
Advisory Council Representative 2009-2011	Kurt Neher 661.412.5203 kurt_neher@oxy.com

Cover photo: Three generations of working test rovers, siblings to Sojourner (center), Spirit and Opportunity (left), and Curiosity (right) in JPL's Mars Yard testing area. Chief Scientist for the Mars Science Laboratory Mission, Dr. John Grotzinger, will be the Halbouty Lecturer at the 2012 AAPG ACE. Image Credit: NASA/JPL-Caltech.

EVERY ISSUE

4	Message from the President • J. Minch
5	Editor's Corner • E. Washburn
7	PSAAPG News
9	Publications
12	Member Society News
THIS ISSUE	
6	Farewell to Friends
7	AAPG 2012 ACE • K. Pitts





2012 is the year of the National AAPG Annual Meeting in Long Beach. Kay Pitts and her crew are doing a superb job of putting it together. There are 11 short courses, 19 field trips, 5 luncheons, 5 forums/special sessions, 400+ oral presentations, and 700+ poster presentations.

WOW!

It is nice to have it in our backyard at such an idyllic venue. The Aquarium of the Pacific is within walking distance. You could spend a day looking at the exhibits.

Registration has already started. Sign up early at <AAPG.org/LongBeach2012>. Besides saving money [nice] you can get your pick of the 19 field trips and 11 short courses. We expect many field trips (who can resist a chance to get out in the field with the experts?) and short courses to fill up quickly. Do the leaders a favor and sign up by the March 14 cancellation date for low enrollment trips. I wish I had space to elaborate on each one. You can take a look at the field trips, technical sessions and short courses by logging onto our website (psaapg.org) and following the links to the convention.

Another very important reason for signing up early is the availability of hotel rooms. The AAPG Headquarters Hotel is the Hyatt Regency and The SEPM Headquarters Hotel is the Westin Long Beach – they tend to fill up early. Or, imagine a stay on the Queen Mary! Shuttle transportation will be provided.

I cannot begin to say enough about the Technical Program. You will just have to go to the web-site and look. There are 11 oral theme sessions and 9 poster theme sessions on a wide variety of topics. The 5 forum/special sessions offer an interactive chance to hear various broad topics from yesteryear with the History of Petroleum Geology, to the future with the Michel T. Halbouty Lecture on Mars Science Laboratory Rover Mission: The Search for Source Rocks. I particularly like the Discovery Thinking Forum.

I expect that this short message will excite you and move you to register NOW! Do not even read the rest of this letter – go to <AAPG.org/LongBeach2012> to register and confirm your hotel reservations.

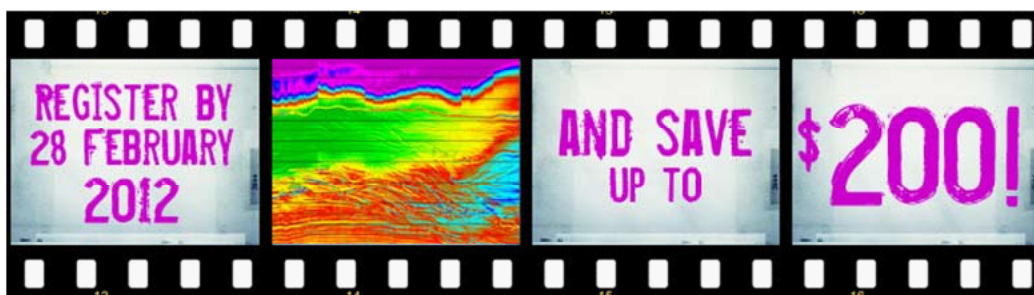
On another note, our representation on the National level is based on voting members. With this in mind, I have examined the list of National AAPG Members that are members of the Pacific Section. There are 1760 total members on the list, with 795 Active Members (45%), 593 Associate (34%), 190 Emeritus (11%), 8 Honorary (<1%), and 174 Students (10%).

Active + Emeritus + Honorary members are voting members. Associate and Student members do not vote. Only 56% of our members are voting members. The 593 Associate Members are fully one-third of our membership.

Editor's Corner donated to a message from Kay Pitts, Convention Chair for the 2012 AAPG Annual Convention and Exhibition. See further description of events on pages 7 and 8.

Limited space is still available in the Exhibit Hall. You can get more information by calling Mike Taylor at 281-773-8836 or going on-line to www.aapg.org/longbeach2012/ToExhibit.cfm

You can still sponsor and be recognized in the program if you contact Larry Knauer before March 5. For more information you can call Larry at 661-392-2471 or go on-line to www.aapg.org/longbeach2012/ToSponsor.cfm. All levels of sponsorship from \$100 to \$25,000 are needed.



Marty Hall
US Marketing / Sales Manager

7765 Windwood Way
P.O. Box 549
Parker, CO 80134
USA

P: +1(720) 851.6152
F: +1(720) 851.6153
C: +1(303) 885.8860

geokinetics.com
marty.hall@geokinetics.com

Geokinetics

REAY ENTERPRISES

William G. Reay

112 Arabella Dr
Fort Davis, TX, 79734
432.426.2443

wgreay@mztv.net

Age dating and environmental determinations of the LA Basin, the Ventura Basin, the San Joaquin and Sacramento sections, as well as the Alaskan Cook Inlet and Post Paleozoic North Slopes section



Joseph Andrew Dunwoody Jr. May 8, 1922 - January 9, 2012



Joseph was born in Grey County, Texas, to Gertrude and Joseph Dunwoody Sr. His Father, Mother, and brother Laurence Eugene Dunwoody preceded him in death. His wife of 62 years, Alene Dunwoody, children Mary Ann Dunwoody, Joseph Andrew Dunwoody III and his wife Melanie, and Leah Harrelson and her husband Bill Harrelson survive him. He is also survived by his grand children Joseph Michael Dunwoody, Jessie Spaulding, Aurora Spaulding, Andrew Spaulding and one Great Grandchild, his "blue eyed" kindred spirit KC Southerland.

Joe grew up with his grandfather, John Roselius, in Macomb, Oklahoma, on the farm riding a big white mule herding the hogs as a child. As a young man, he moved to Santa Barbara to live with his Aunt Mary, graduating from Santa Barbara High School in 1940. He served in the US Army Air Corps as a Top Turret Gunner Staff Sergeant from 1941-1945, first stationed in Alaska. During his time in the service, he participated in the bombing of the Kuril Islands of Japan. In 1943 during one of these raids, while flying over Russia, their B-25 bomber was shot at and damaged, forcing them to land at an air strip in Petropovlovsk, Russia. After many hours of waiting, the Russians showed up, taking the crew and holding them captive for several months, moving from place to place, ending at Tashkent camp. Once at Tashkent camp, Joe and fellow crew mate Evin Lans made an effort to escape hopping a box car thinking they were headed to China. Riding the train to its end and the only ones left aboard, they got off and attempted to cross a river trestle, but were shot at and captured again. Held overnight in a shed with potatoes and cabbage, a Russian Colonel gathered them and brought them back to Brevskaya camp on the same train they tried to escape. His own Major put him in solitary confinement for ten days for trying to escape. They were all finally released in February of 1944, put on a train, then trucked to Teheran, Iran. There, the crew was checked out in a hospital, then shipped to North Africa. Joseph was honorably discharged in 1945 and finally awarded prisoner of war status for his interment in 2003.

After the war, Joe enrolled at the University of Southern California in the Geology program, graduating in 1949, and went on to have a long career in the petroleum industry working for Bartholome Corporation, US Division of Oil and Gas, Pacific Western, Tidewater, and Getty Oil. He became a consulting geologist in 1964. Joe was also a long time member of AAPG.

Joe met the love of his life Alene Lola Ring on a blind date. He took her to a football game and she thought he was a little nuts, as he got so excited, constantly pulling on his socks and yelling at the referees. Little did she know that she would spend the next 62 years witnessing these same actions going to football games and as they watched games on TV. Besides sports, Joe was very politically minded and a fervent republican. Many may remember "Dunwoody for Congress" back in 1964. Though that was not to be his path in life, he was always willing to give you his opinion on politics. Another passion of Joe's was his Appaloosa Horses. He was active in the Golden Empire Appaloosa Horse Club since the 1970's, and was president of the club many times over the years. Joe was most proud of his leopard stallion "Darius the Great". He also loved his dogs, raising German Sheperd's and taking in numerous strays at the ranch. Most of all, Joe was a family man. He loved his wife, children and grand children more than anything, and was generous to a fault. The family has been blessed to have him with us for so many years and his passing will leave a very large void in all our lives, but we know that he is at peace and in heaven waiting for us all to join him in our own time. In lieu of flowers, donations can be made in honor of Joseph Dunwoody to the California Wounded Warriors Project Fund Drive, 4899 Velfort Rd suite 300 Jacksonville, Florida 32256.

Published in Bakersfield Californian on January 12, 2012

SMGM

SCOTT M. MOSSMAN
SENIOR GEOPHYSICIST
GRAVITY & MAGNETIC CONSULTING

(303) 875-2360

scmossman@gmail.com

www.smgmconsulting.com

610 Santa Monica Blvd. 203
Santa Monica, CA 90401

Ralph J. Goehring, CEO

SandDollar Financial LLC

Your outsource accounting solution.

*Outsource your oil and gas accounting to us.
Specialists in energy and pre-IPO accounting.*

(661) 952-7789

www.SandDollarOutsource.com



Directing the Future of E&P: Starring Creative Ideas and New Technology

Lights. Camera. Action!

Make plans to play a role in the AAPG 2012 Annual Convention & Exhibition, to be held 22-25 April 2012 at the Long Beach Convention & Entertainment Center in Long Beach, California.

Register now for the AAPG 2012 ACE in Long Beach!

Pacific Section is the host organization for the AAPG 2012 Annual Convention and Exhibition (ACE). You can be sure the technical program, short courses, field trips, and Exhibit Hall are terrific!

Register on or before February 28 and get a \$200 discount on AAPG member registration. Register after that date, but before April 3, and you will still get a \$100 discount

Don't miss the star-studded lineup of events planned for the meeting:

A vibrant exhibition

11 short courses including:

- Shale Gas Reservoir Assessment – an Integrated Approach
- Seismic Geomorphology and Seismic Stratigraphy: Extracting Geologic Insights from 3-D Seismic Data
- Monterey Formation Seminar and Core Workshop
- The Basics of Extensional Faulting – An Introduction to the Volcanic Tableland

19 field trips including:

- Miocene Monterey Formation of the Los Angeles Basin
- Structure and Hydrocarbon Exploration in the Transpressive Basins of Southern California
- The Great Debate: Sequence Stratigraphic and Tectonic Evolution of Deltaic Facies in the Ridge Basin, California
- Subtleties of Extensional Faulting – Things You Might Miss but Hydrocarbons Won't: Volcanic Tableland, Bishop, California
- Sedimentary Geology of a Mid-Plate Volcanic Mountain-Island Chain: The Islands of Hawaii and Kauai

5 luncheons including:

- All Convention Luncheon features Robin West, Founder and Chairman of PFC Energy on “The Future of Global Deepwater After Macondo”
- Division of Environmental Geosciences features Steve Leifer on “Hydraulic Fracturing: Separating Myth from Reality”

5 forums/special sessions**400+ oral presentations****700+ poster presentations****Special Activities include:**

- Imperial Barrel Award Competition (Friday, April 20)
- Switch – The Movie featuring AAPG Past President Scott Tinker
- Wine Tasting Seminar for Guests in the Hospitality Suite
- Sundowner – A wonderful farewell reception to an outstanding convention




No matter what stage of your career, there's something for you at the AAPG 2012 ACE. Here are some great reasons to attend:

- Stay on top of industry trends
- Develop a technology roadmap for your company
- Learn from product demonstrations
- Develop new markets
- Network with international geoscientists
- Students, see “real” professionals in action

For the first time ever, ACE participants now have the option of quality child care while attending the convention through a contract with KiddieCorp. KiddieCorp has provided high-quality programs to children at conventions, trade shows, and corporate events throughout the United States and Canada since 1986. This service provides a safe environment with age appropriate activities to keep your child busy while you take care of business.

Exhibitors and Sponsors Wanted



PETROLOG
PETROLOG, INC.
JOHN T. WILLIAMS
 Geologist, P.G. #5899, President
Geological Well Logging
 P.O. BOX 7028
 VENTURA, CA 93006
 jtw@petrolog-geological.com
 (805) 642-2847 • Fax (805) 980-5569 • Cell (805) 231-3793

GREGORY GEOLOGICAL SERVICES

Glenn J. Gregory
 California Professional Geologist #3676

4800 Easton Drive, Suite 101
 Bakersfield, CA 93309

(661) 633-5555
 glennng@bak.rr.com

Dibblee Collection of California Geologic Maps by Thomas W. Dibblee, Jr.

Published by the Dibblee Geology Center of the Santa Barbara Museum of Natural History (SBMNH), these maps were created in conjunction with AAPG/Datapages and Generation Graphics, Inc. There are 419 maps (all or part of 550 quadrangles) in the Dibblee Map Collection, and all are currently available for download as PDFs through the AAPG Bookstore (<http://bookstore.aapg.org>) & hard copy from SBMNH <<http://www.sbnature.org>>.

Dibblee Geology Maps Specifications

All maps are within the State of California and were field mapped by Thomas Wilson Dibblee, Jr. Scale is 1:24,000. Desert maps are 1:62,500. The maps feature high quality PDFs created from the original files, and include a USGS topographic map overlay layer. Maps are geo-registered to the four corners of each map using the original USGS overlay projection: (a) North American Datum 1927 (NAD 27); (b) Universal Transverse Mercator Grid (UTM zone 10 or zone 11). A wide format printer is required for full size printing.

GeoPDF (Adobe Acrobat) Features and Requirements

Adobe Acrobat Reader Version 9.1 (or newer) is required to take full advantage of the GeoPDF features, but any version of Acrobat Reader will display the map for review and/or printing. To review GeoPDF features, go to the [Analysis] section in the [Tools] drop down menu; then go to [Preferences/Measuring] (Geo) to change the geospatial measurement to meet your needs. To view separate GeoPDF layer features, go to [View/Navigation Panels/Layers].

The data depicted herein is based on reconnaissance geologic field mapping, including the identification and interpretation of surface conditions, and data compilation by T.W. Dibblee, Jr., with strong emphasis on basic bedrock geology.

The Collections on DVD

Users can acquire complete sets of Dibblee maps, grouped by region at a discount off the single-copy price. The three regional sets are: Northern Basin, Humboldt Basin, and Desert.

For questions, or for more information, contact: AAPG/Datapages

c/o AAPG Bookstore 1444 South Boulder Avenue, Tulsa, OK 74119, USA, E-mail: aapgdata@aapg.org, Web: <http://bookstore.aapg.org>

The last part of this map project was completed with funds loaned to the Dibblee Map Center. We are asking for contributions to retire the last \$25,000 of that debt. One way to contribute is to purchase a block of maps, requesting that the funds be applied to retiring the debt. For more information, contact John Minch. 27441 Betanzos, Mission Viejo, CA 92692, E-mail: jmainc@earthlink.net, Phone: 714-501-4162.



GEOLOGICAL LOGGING INC.
9229 Beatty Drive, Suite B
Sacramento, CA 95826
Telephone 916-452-9570
Cell 952-8975 Fax 452-9573
geolog@sbcglobal.net

ERNIE BURROUGHS
President/Owner
Registered Geologist No. 1628



RESERVOIR CHARACTERIZATION
GEOLOGY
PETROPHYSICS
DATABASE MANAGEMENT
DIGITIZING & SCANNING

EarthQuest Technical Services, LLC

David R. Walter

drwalter@eqtservices.com
www.eqtservices.com

2201 'F' Street
Bakersfield, CA 93301
661•321•3136

Stanford University Geologic Studies of the San Joaquin Basin, 1980-2010

Stephan A. Graham, W.J. and M.L. Crook Professor
School of Earth Sciences, Stanford University, Stanford, California

The dissertations reproduced on this DVD largely predate the digital era, so many have been scanned from original hard copies of variable states of preservation; as a result, the quality varies in this product. The original dissertations are on file and accessible to the public at Branner Earth Sciences Library, School of Earth Sciences, Stanford University. Scans for this DVD derive from two sources. Some were produced as part of a program at Stanford to digitize all older dissertations, with thanks to Julie Sweetkind-Singer, (Acting Head Librarian) and her staff at Branner Library, for facilitating access to previously scanned dissertations. However, the majority of the dissertations in this collection were scanned pro bono by PayZone, Inc. of Bakersfield, thanks to the considerable efforts of Deborah Olson and her colleagues. Larry Knauer, Pacific Section AAPG, encouraged and facilitated production of the DVD. Ultimately, principal credit for this compilation goes to Deborah Olson, who first suggested the idea of this DVD in order to facilitate greater public access to these dissertations, because most were previously unpublished or published in regional publications of limited circulation. This body of research would not have been possible without the support of the San Joaquin Project consortium member companies, which over time included: Amerada-Hess, Amoco, Arco, BP Alaska, Champlin, Chevron, Cities, Conoco, Exxon, Getty, Gulf, Husky, Marathon, Mobil, Natural Gas Corp, Occidental, Phillips, Santa Fe Energy, Shell, Sohio, Superior, Tenneco, Texaco, and Unocal.

A 2-DVD set containing the information described above may be purchased from the Pacific Section American Association of Petroleum Geologists (PSAAPG) Publications Committee for \$50.00 by contacting (and including a check or credit card information and a shipping address)

PSAAPG Publications
P.O. Box 1072
Bakersfield, CA 93302

or

Larry Knauer (Publications Chair)
larryknauer@chevron.com
661-392-2471



Western US/US Land/Wireline Systems

Sales: +1 661.334.3800 | Fax: +1 661.334.3808

Operations: +1 661.765.2020 | Fax: +1 661.765.2150

<http://www.bakerhughes.com> | Advancing Reservoir Performance

PUBLICATIONS OF THE AAPG PACIFIC SECTION ON DVD

AAPG Datapages and the AAPG Pacific Section announce our recent release of the digital archive, "Publications of the AAPG Pacific Section on DVD" released by the AAPG Bookstore.

This fully-searchable volume contains 132 publications of the Pacific Section published from 1947-2001. Included are special publications, field trip guidebooks, and 32 special Cross Section publications. All documents are included as Adobe Acrobat (PDF) format.

Price is \$145.00

To order send a check or CC info to:

PSAAPG Publications
P.O. Box 1072
Bakersfield, CA 93302

Or email the PSAAPG Publication Chair at
larryknauer@chevron.com

This DVD may also be ordered through AAPG Datapages.

Special Core Analysis In Bakersfield



Core Lab
RESERVOIR OPTIMIZATION

Laboratory Services Include:

- Capillary Pressure • Relative Permeability • Formation Damage Studies • Electrical Analyses • Environmental Studies

Core Laboratories, Inc • 3437 Landco Drive • Bakersfield, CA 93308
Tel: (661) 325-5657 • Fax: (661) 325-5808

Headline News

Alaska Geological Society

New: 2011 Field Guide to the Accretionary Complex and Neotectonics of South-Central Alaska, Anchorage to Seward
Tentative March Speaker- AAPG Distinguished Lecturer

Coast Geological Society

2011 GeoTrek a Big Success

L.A. Basin Geological Society

New: Field Guide to the San Andreas Fault
Next Meeting Jan. 26, Speaker Rusty Riece- "Oil Spills, Ethics, and Society"
Seeking Replacement Vice President/Program Coordinator

Northern California Geological Society

March 21 Meeting with SPA, Speaker Roland Bain, Annual Review of Natural Gas Drilling in the Sac Valley

Northwest Energy Association

Next Breakfast meeting Feb. 10
Looking for Officers and Company Sponsorships

Sacramento Petroleum Association

March 21 Meeting, Speaker Roland Bain, Annual Review of Natural Gas Drilling in the Sac Valley

San Joaquin Geological Society

New Constitution and Bylaws Approved by the Membership
Lunch Meeting Jan. 25, AAPG Distinguished Lecturer Rusty Riece
Next Meeting Feb. 14- "Wine and Geology of Paso Robles" by Tim Cleath



DHISERVICES

Formation Evaluation Specialists

www.dhiservices.com

Les Collins

Regional Operations Manager

2202 Zeus Court
Bakersfield, CA 93308
Tel: +1 (661) 588-8310
Fax: +1 (661) 588-8322
Cell: +1 (661) 742-2720
Email: lcollins@dhiservices.com

Alaska Geological Society

www.alaskageology.org

P. O. Box 101288
Anchorage, AK 99510

Contact: Tom Morahan
907.230.1672



Luncheon meetings are held monthly September through May, usually on the third Thursday of the month, at the BP Energy Center (1014 Energy Court) from 11:30 a.m. to 1:00 p.m. The hot lunch cost is \$20 for members with reservations; \$22 for non-members with reservations; and \$25 without reservations. The box lunch cost is \$13 for members with reservations, \$15 for non-members with reservations, and \$18 without reservations. For reservations, call the AGS reservation voice mail at 907-258-9059 or contact David Hite at hiteconsult@acsalaska.net by noon on Monday before the meeting.

President:	Ken Helmold	907.269.8673	ken.helmold@alaska.gov
President-Elect:	Steve Wright	907.263.7865	Sswr@chevron.com
Vice-President:	Dick Garrard	907.244.1067	Rgarrard@talisman-energy.com
Secretary:	Chad Hults	907.786.7417	chults@usgs.gov
Treasurer:	Alan Hunter	907.263.7947	alhunter@chevron.com
Past-President:	Tom Morahan	907.230.1672	tmorahan@petroak.com

Coast Geological Society

www.coastgeologicalsociety.org

P. O. Box 3055
Ventura, CA 93006

Contact: Mike Nelson
805.535.2058



Dinner meetings are held monthly September through May, usually on the third Tuesday of the month, at the Poinsettia Pavilion, 3451 Foothill Road in Ventura. Social hour starts at 6:00 p.m., dinner is served at 7:00 p.m., and the talk starts at 8:00 p.m. The cost of dinner with reservations is \$20 (members), \$25 (non-members), or \$10 (students and K-12 teachers); the talk is free. For reservations, please email Jerry Nichols (secretary@coastgeologicalsociety.org). Reservations should be made by 4:00 p.m. on the Friday before the meeting.

President:	Jon Schwalbach	805.648.8518	president@coastgeologicalsociety.org
Past President:	Mike Nelson	805.535.2058	pastpresident@coastgeologicalsociety.org
Vice President:	John Harris	805.407.7644	vicepresident@coastgeologicalsociety.org
Secretary:	Jerry Nichols	310.245.8897	secretary@coastgeologicalsociety.org
Treasurer:	Ed Magdaleno	805.535.2086	treasurer@coastgeologicalsociety.org

Los Angeles Basin Geological Society

www.labgs.org

515 So. Flower Street, Ste 4800
Los Angeles, CA 90071

Contact: Bill Long
213.225.5900 x 205



Luncheon meetings are held monthly September and October; and January through June, usually on the fourth Thursday of the month, in the Monarch Room at The Grand at Willow Street Conference Centre (4101 E. Willow Street) in Long Beach. Lunch is served at 11:30 a.m., and the talk starts at 12:15 p.m. The cost is \$20 (with reservations), \$25 (without reservations), or \$0 (students are covered by Halliburton and Schlumberger). Reservations can be made online at www.labgs.org or by contacting Marieke Gaudet at 562.624.3364 or marieke_gaudet@oxy.com. Reservations must be made prior to Tuesday before the meeting.

President:	Bill Long	213.225.5900 x205	william.long@breitburn.com
Vice President/Program Chair:	Greg Hummel	213.225.5900 x251	ghummel@energy-reserves.com
Treasurer:	Bert Vogler	562.432.1696	hvogler@kleinfelder.com
Secretary/webmaster:	Rebecca Lanners	562.624.3364	Becca_Lanners@oxy.com
Scholarship Program	Jean Kulla	949.500.3095	k2mobile@msn.com

Northern California Geological Society

www.ncgeolsoc.org

9 Bramblewood Court
Danville, CA 94506-1130

Contact: Barb Matz
Barbara.Matz@shawgrp.com



Evening meetings are held monthly September through May, usually on the last Wednesday of the month, at the Masonic Center (9 Altarinda Road) in Orinda. Social hour starts at 6:30 p.m., and the talk starts at 7:00 p.m. (no dinner). For reservations, contact Dan Day at danday94@pacbell.net before the meeting. Cost is \$5 per regular member; \$1 per student member; and \$1 per K-12 teachers.

Northwest Energy Association

www.nwenergyassociation.org

P. O. Box 6679
Portland, OR 97228-6679

Contact: Tim Blackwood
503.656.0156



Breakfast meetings are held monthly September through May, usually on the second Friday of the month, at the Multnomah Athletic Club (1849 SW. Salmon Street) in Portland. Meeting time is at 7:30 - 9:00 am. The cost is \$18. For information or reservations, contact Steve Walti.

President	Tim Blackwood	tblackwood@pacificgeotechnicalllc.com
Treasurer	Steve Walti	steven.walti@nwnatural.com

Sacramento Petroleum Association

P. O. Box 571
Sacramento, CA 95812-0571

Contact: David Hartley
530.304.4277



Luncheon meetings held monthly January through November, on the third Wednesday of the month. Location: Club Pheasant Restaurant in West Sacramento. The meetings starts at noon. The cost is \$16 - \$20. For information or reservations, contact Pam Ceccarelli.

President:	Jerry Reedy	916.486.2643	JWR5532@aol.com
Vice-President:	David Hartley	530.304.4277	drilmax1@aol.com
Secretary	Derek Jones	916.859.4710	djones@gasbiz.com
Editor/Treasurer	Pam Ceccarelli	916.439.0400	pc626@comcast.net

San Joaquin Geological Society

www.sjgs.com

P. O. Box 1056
Bakersfield, CA 93302

Contact: Tim Elam
paselam@peoplepc.com



We have dinner meetings on the second Tuesday of the month at the American Legion Hall at 2020 "H Street" in Bakersfield. There is an icebreaker at 6:00 pm, dinner at 7:00 pm, and a talk at 8:00 pm. Dinner is \$25.00 for members with reservations and \$30.00 for nonmembers and members without reservations, and the talks are free.

President:	Tim Elam	kyrocks@peoplepc.com
Past President:	Jack Grippi	JGrippi@aeraenergy.com
President-Elect:	Jeff Gartland	Jeff_Gartland@oxy.com
Vice-President:	Stefano Mazzoni	Stefano_Mazzoni@oxy.com
Secretary:	Ariel Auffant	AAuffant@chevron.com
Treasurer:	Kathy Smith	kathysmith@pacseis.com

- Images (graphics, photos, and scans) must be at least 300 dpi resolution. Text should be scanned at least 600 dpi.
- Scanned photos, illustrations (line art) or logos must be scanned at 300 dpi minimum and saved as a tiff or eps.
- Avoid clip-art and images from the internet. These images are low-resolution (72 dpi).

Advertising Rates

Members	Single Issue	Year (6 issues)
Full Page	\$400.00	\$1600.00
Half Page	\$250.00	\$1050.00
Quarter Page	\$150.00	\$650.00
Business Card		\$250.00

Societies Free Advertising

Convention Societies	Unlimited Space 1/4 Page	PSAAPG Newsletter AAPG Explorer
----------------------	-----------------------------	------------------------------------

Newsletter Deadline

March & April Issue

March 1st



Photo courtesy of Andreas Mulch

Investing in Energy to Support Education and Research



“Today’s computational capacity and the availability of large volumes of data from ground-based observations and satellites offer new opportunities for understanding how the Earth system works and how human activities interact with Earth processes. The Stanford Center for Computational Earth and Environmental Science will enable the development of sophisticated models to address questions about energy and freshwater resources, natural hazards, climate change, and other global issues.”

Jerry M. Harris, Founding Director, Center for Computational Earth and Environmental Science, Professor and Former Chair, Department of Geophysics, Stanford University; Director, Stanford Wave Physics Laboratory; Past Distinguished Lecturer, Society of Exploration Geophysicists, American Association of Petroleum Geologists, and Society of Petroleum Engineers.

The alumni-managed Stanford Petroleum Investments Funds own, manage, and acquire producing oil and gas royalties and other energy investments. Income from these investments provides essential discretionary funding in support of energy and environmental education and research and other programs of the Stanford School of Earth Sciences. The Petroleum Investments Funds provided seed funding to help launch the Stanford Center for Computational Earth and Environmental Science.

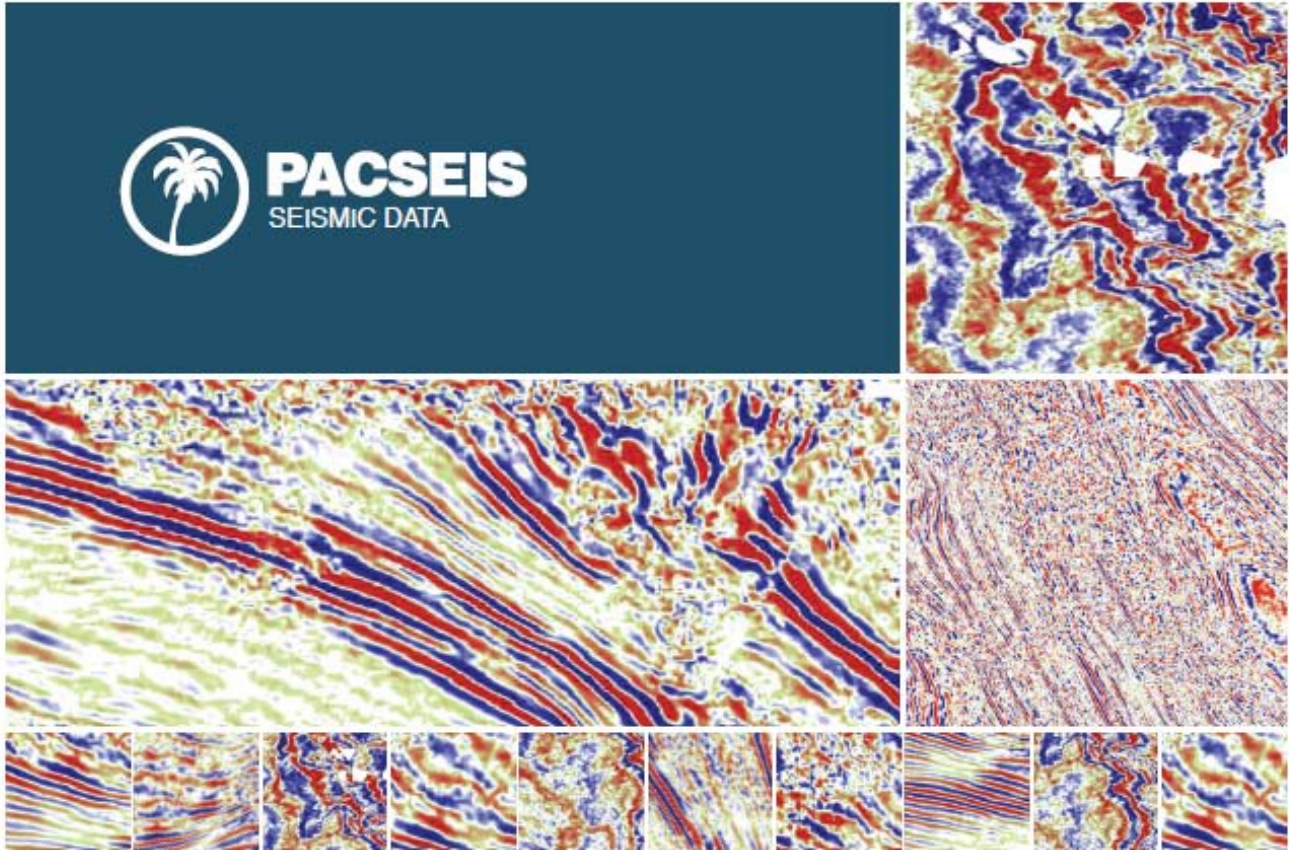
If you would like to sell or donate producing oil and gas royalties or learn more, visit <http://earthsci.stanford.edu/alumni/support/pif> or call or email David Gordon, Executive Administrator, Petroleum Investments Committee, Stanford School of Earth Sciences, at (650) 723-9777 or dsgordon@stanford.edu to see how you can help.





PACIFIC SECTION AAPG
P. O. Box 1072
BAKERSFIELD, CA 93302

PRESORTED
STANDARD
U.S. POSTAGE PAID
BAKERSFIELD, CA
PERMIT NO. 1163



PACIFIC SEISMIC COMPANY

The leader in subsurface information

RESOURCES THAT DELIVER THE DIFFERENCE

- One of the largest seismic databases available for license
- Seismic available for immediate license
Over 500,000 line miles of 2D data located in domestic United States (onshore & offshore)
- 2,500 square miles of 3D surveys

RECENTLY ACQUIRED SEISMIC DATABASES BY PACIFIC SEISMIC CO.

- Chevron USA California, OXY USA Nationwide (including Arco & Enron)
- Santa Fe energy, TXO, Cities Service Oil & Gas Nationwide
- Southern Pacific, PG&E/ NGC, SOHIO

PACIFIC SEISMIC COMPANY | Your Full-Service Seismic Brokerage & Acquisition Company

EXPLORATION CONSULTING

PROSPECT FINANCING

PROJECT DEVELOPMENT

Tel (661) 322-1171 | Fax (661) 322-1181 • www.pacseis.com | Bakersfield | Houston | Denver