



# Pacific Petroleum Geology



NEWSLETTER

---

Pacific Section • American Association of Petroleum Geologists

September & October 2011

---



## Leadership at the Front Range

# Get More from your Core



**With reservoirs becoming increasingly complex, you need the most accurate information you can get to better understand your reservoir.**

Weatherford Labs helps you get more from your core by combining an unsurpassed global team of geoscientists, engineers, technicians and researchers with the industry's most comprehensive, integrated laboratory services worldwide. From core analysis, sorption, geochemistry and isotopic composition to detailed basin modeling and comprehensive data packages, we provide you with real reservoir rock and fluid information that hasn't been distilled by a simulator or iterated by software.

We call it "The Ground Truth™" – giving you the accurate answers you need for better reservoir understanding. You'll call it a better return on your reservoir investment. To learn more, contact [TheGroundTruth@weatherfordlabs.com](mailto:TheGroundTruth@weatherfordlabs.com).



## 2011-2012 OFFICERS

President	John Minch 805.898.9200 president@psaapg.org
President-Elect	Tony Reid 661.412.5467 president-elect@psaapg.org
Vice President	Greg Hummel 805.361.7104 vice-president@psaapg.org
Secretary	Becca Lanners 562.495.9310 secretary@psaapg.org
Treasurer 2010-2012	Jana McIntyre 661.869.8231 treasurer@psaapg.org
Treasurer 2011-2013	Jennifer Anderson 661.363.3226 treasurer@psaapg.org
Past President	Cynthia Huggins 661.665.5074 president@psaapg.org
Editor-in-Chief 2010-2012	Ed Washburn 661.654.7182 editor@psaapg.org

## STAFF

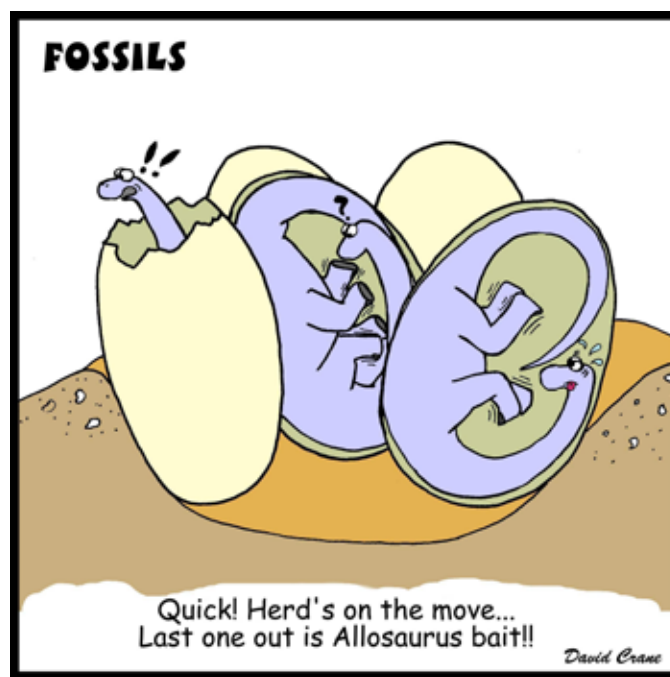
Web Master	Bob Countryman 661.589.8580 webmaster@psaapg.org
Membership Chair	Emily Loera 661.859.9713 membership@psaapg.org
Publications Chair	Larry Knauer 661.392.2471 publications@psaapg.org LarryKnauer@chevron.com
Advisory Council Representative 2009-2012	Kurt Neher 661.412.5203 kurt_neher@oxy.com

## EVERY ISSUE

4	Message from the President • J. Minch
5	Editor's Corner • E. Washburn
7	PSAAPG News
13	Publications
16	Member Society News

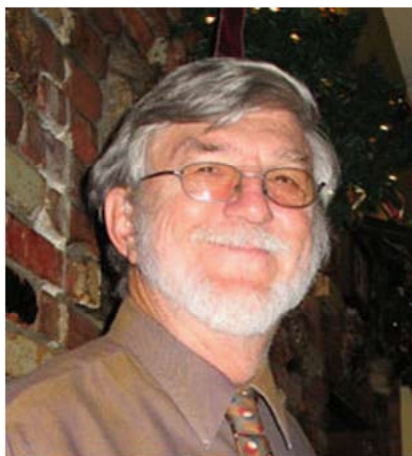
## THIS ISSUE

6	Farewell to Friends
7	PSAAPG Election Results
8	AAPG ACE 2012 Call for Abstracts
14	AAPG Leadership Conference • R. Lindblom



Cover photo: View of the front range of the Rocky Mountains near Boulder, CO. Provided by Paul Weimer, Department of Geological Sciences, University of Colorado.





Well, we are over two months into this year and I am just now finding out who is on this year's Executive Committee. We will have our first meeting just before the SJGS Bar-beque. I look forward to working with them.

In July, I participated in a monthly conference call with many of the Section and Region Presidents. Membership and Student Chapters were big topics of the meeting. This was more of an introductory meeting. I expect there to be more in the coming months.

In August, I participated in the AAPG Leadership Conference in Boulder, Colorado. The view of the hogbacks of the Front Range from the top of their stadium is impressive, even a small cirque was visible in the distance. This yearly meeting brought together many facets of the leadership of the AAPG, from the president to the student, into a forum to discuss a wide range of issues facing the AAPG today and tomorrow. Globalization, strategic planning, membership, publications, young professionals, student chapters, and business opportunities were all topics. We will put the current Strategic Plan, along with Don Clarke's comments (Don co-chaired that session), on the website (hear more about the meeting in Bob Lindblom's synopsis on page 14). Did you know that Don is running for the National AAPG President-elect? Let's support him and get the word out.

I arrived a day early and participated in the Young Professionals portion of the meeting. There were a significant number of young professionals and students there. They included representatives from the US and Canada, Latin America, Europe, Asia, and Asia Pacific. So many energetic young individuals! One of the big thrusts of this group is to reach back into the universities and colleges to build interest in the AAPG, not only as student members, but also as future active members.

I was able to caucus with the young professionals and students from the Pacific Section. A number of us from the Pacific Section will be getting together shortly to work on ways of energizing the Student Chapters in the PacSec schools. We are going to try to enlist additional "Young Professionals" along with "Seasoned Veterans" to work with the "Faculty Advisors" at each school. At this point I want to charge all of you to get back to your Alma Mater and drum up support for the Student Chapters, and encourage graduating students to become active members.

It seems that we currently lose over 90% of the student members, with less than 10% actually becoming active members. Why is that? Is it too easy to become a Student Member and not worth it to continue as an Active Member? How can we change this? One comment I heard recently was: "We are professional geologists without AAPG. Why join?" I can remember how I joined. At the '76 National Meeting in SF, Fred Dix trapped me in the AAPG booth until I filled out the application, while he got 3 sponsors, and I gave him a check.

I am going to leave you hanging here with the thought: what can I do to get my colleagues into and involved in the AAPG? Then I want you to act on your thoughts. We can make this effort work.



**Les Collins**  
Regional Operations Manager

2202 Zeus Court  
Bakersfield, CA 93308  
Tel: +1 (661) 588-8310  
Fax: +1 (661) 588-8322  
Cell: +1 (661) 742-2720  
Email: lcollins@dhiservices.com

**DHISERVICES**  
Formation Evaluation Specialists

[www.dhiservices.com](http://www.dhiservices.com)

Congratulations to the newly elected executive committee officers, and thanks to all the candidates and voting members for your participation in the election.

In this issue is the call for abstracts for the 2012 ACE meeting in Long Beach. An issue in the near future will contain descriptions of the field trips associated with the convention. Presenting a paper or attending a field trip are both great ways to represent our region and our industry to the many students and faculty members who attend the convention. The mutual benefits of interaction between industry and academia are numerous and significant. The annual convention provides one of the best opportunities for the face-to-face component of this interaction. A field trip is also a chance to get together with former college buddies who are now spread across the country and world with various companies, and learn some geology in the process.

Speaking of papers and field trips ...

We are always looking for short technical papers to include in the newsletter. Also, please send in any information you'd like shared with the Pacific Section for upcoming field trips. A minimum of two months before the trip registration deadline is a good idea.

**Corrections:** Bob Lindblom's name was misspelled in the July & August issue. Also in the July & August issue, the picture of Tony Reid receiving an award is really Tony accepting on the behalf of Gene Fritsche his lifetime achievement award presented in Anchorage.

**Marty Hall**  
US Marketing / Sales Manager

7765 Windwood Way  
P.O. Box 549  
Parker, CO 80134  
USA

P: +1(720) 851.6152  
F: +1(720) 851.6153  
C: +1(303) 885.8860

[geokinetics.com](http://geokinetics.com)  
[marty.hall@geokinetics.com](mailto:marty.hall@geokinetics.com)



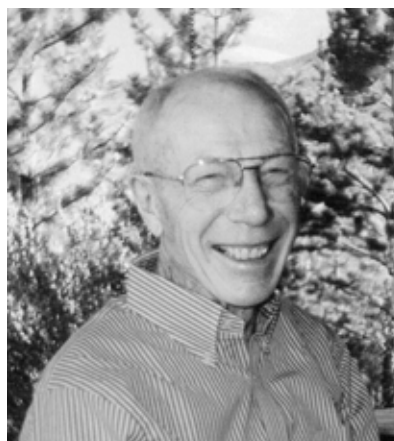
## REAY ENTERPRISES

**William G. Reay**

112 Arabella Dr  
Fort Davis, TX, 79734  
432.426.2443

[wgreay@mztv.net](mailto:wgreay@mztv.net)

Age dating and environmental determinations of the LA Basin, the Ventura Basin, the San Joaquin and Sacramento sections, as well as the Alaskan Cook Inlet and Post Paleozoic North Slopes section



## Ronald L. Ackley

Ronald Lowell Ackley was born on May 29, 1926, in Fargo, North Dakota, to Dorothy Ann Charles. He lived in Tower City, North Dakota and Milwaukee, Wisconsin, before moving at the age of 9 to Alturas, California, where he spent the happiest years of his life. Ron graduated from Modoc Union High School, class of 1945.

In 1944 Ron joined the U.S. Army Air Corps, and was discharged two years later. In 1946 he attended Sacramento Junior College, and in 1951 he graduated from the University of California, Berkeley, with a degree in Petroleum Engineering. After working briefly for Standard Oil Company, Ron partnered with two others in June 1952 to form Exploration Logging. Based in Sacramento, Exploration Logging was a geological-engineering service company employed on a contract basis by various companies exploring for oil and gas reserves. In September 1957 Ron was married to Madeline Koester, and they lived in Sacramento. Exploration Logging was purchased in 1972 by Baker Oil Tools. Later that year Ron, now employed by Baker, was transferred to Houston, Texas. Two years later Ron retired at the age of 48.

After Ron's retirement he and Madeline lived in Houston, Santa Fe, and Sacramento before settling in Reno in January 1986. Ron loved the outdoors: hiking and fishing, and the relationships that came with those activities. He and Madeline became members of Lutheran Church of the Good Shepherd, and Ron became a stalwart in the church's Hiking Club, a regular worshiper, and, in recent years, a curious Bible student. He and Madeline traveled extensively, exploring and learning both in the U.S. and overseas. A bright man with a searching mind, Ron loved to read and learn.

Ron died on Thursday, September 1, 2011, having received and used well the gift of 85 years, 3 months, and 4 days. Preceded in death by his mother and brother, Robert, Ron will be missed by his wife of 53 years, Madeline, and many loving relatives and friends who will miss his good humor and broad smile.

**Modified from contribution provided by Stan Woolley from the memorial service.**

The Executive Committee would like to thank those of our membership who took the time (twice, in many cases) to participate in the election.

## Newly Elected Executive Committee Officers

**President-Elect:** Tony Reid

**Vice-President:** Greg Hummel

**Secretary:** Becca Lanners

**Treasurer-Elect:** Jennifer Anderson

**PSAAPG Foundation Trustee:** Bob Countryman

## PSAAPG Constitution and By-Laws Changes: Approved

Congratulations to all the new office holders, and thanks again to Hilario Camacho, Jerry McNaboe, Nelson Doris, and Katrina Hoffman for your willingness to serve the Pacific Section. It is greatly appreciated. Thanks also to Scott Hector (Past President), Jeff Gartland (Secretary), and Cheryl Blume (Treasurer), who have finished their terms of office and are leaving the executive committee (for now).




Pacific Section representatives to the annual AAPG Leadership Conference in Boulder, CO.

Standing, from left: Brian Blackstone, John Minch, Jessica Moore, Heidi Hoffower, Don Clarke

Seated, from left: Bob Lindblom, Tim Elam, Kay Pitts, Kurt Neher

Not pictured- Steven Testa and Mark Maroun



**PETROLOG**  
PETROLOG, INC.  
JOHN T. WILLIAMS  
Geologist, P.G.#5899, President  
Geological Well Logging  
P.O. BOX 7028  
VENTURA, CA 93008  
jtw@petrolog-geological.com  
(805) 642-2847 • Fax (805) 980-5569 • Cell (805) 231-3793

**GREGORY GEOLOGICAL SERVICES**

**Glenn J. Gregory**  
California Professional Geologist #3676

4800 Easton Drive, Suite 101  
Bakersfield, CA 93309  
(661) 633-5555  
glenng@bak.rr.com

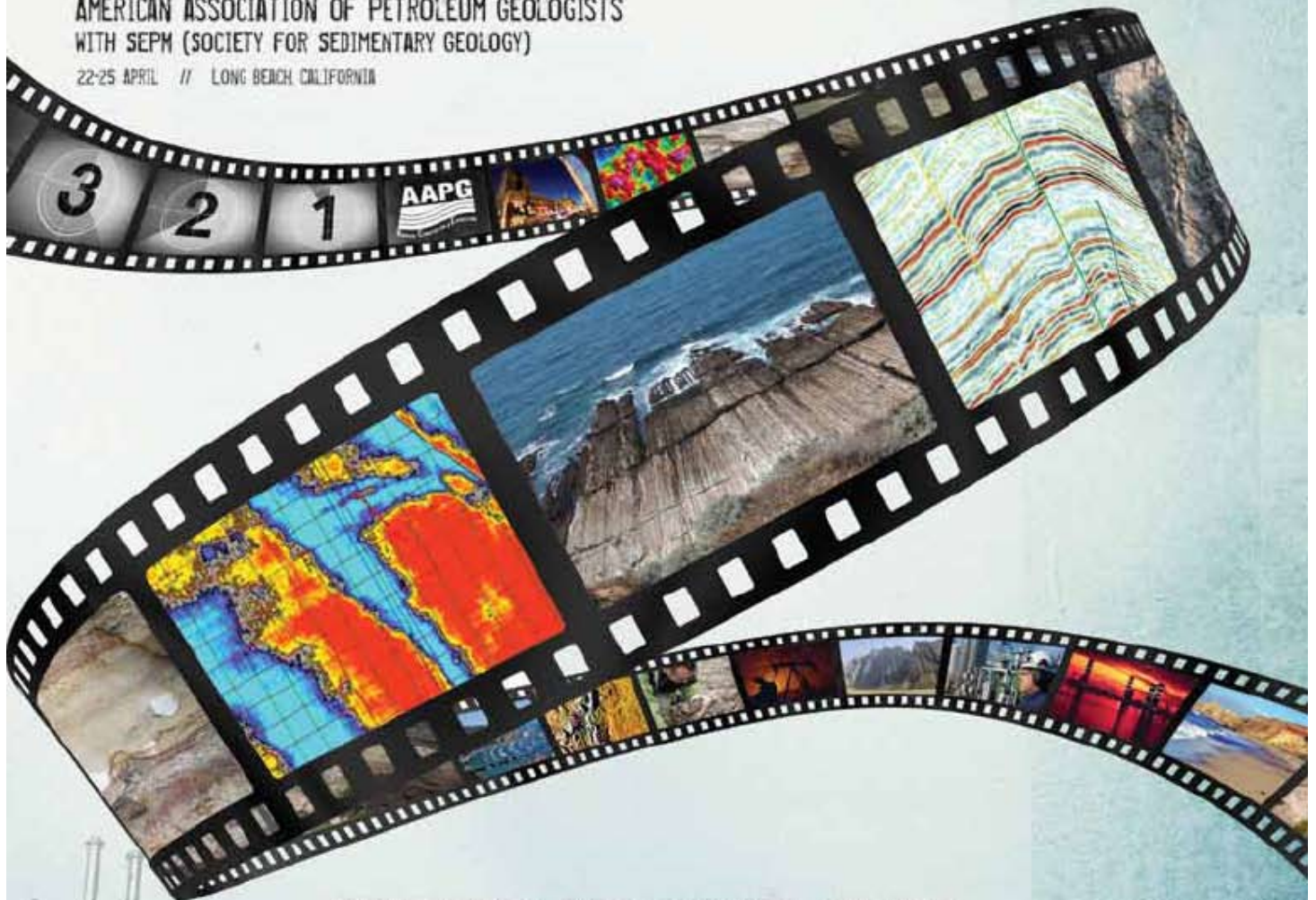


CALL FOR ABSTRACTS

# AAPG 2012 ANNUAL CONVENTION & EXHIBITION

AMERICAN ASSOCIATION OF PETROLEUM GEOLOGISTS  
WITH SEPM (SOCIETY FOR SEDIMENTARY GEOLOGY)

22-25 APRIL // LONG BEACH, CALIFORNIA



**DIRECTING THE FUTURE OF E&P**  
**STARRING CREATIVE IDEAS AND NEW TECHNOLOGY**

ORGANIZED BY



HOSTED BY



[WWW.AAPG.ORG/LONGBEACH2012](http://WWW.AAPG.ORG/LONGBEACH2012)



# PLAY A STARRING ROLE IN GEOSCIENCES

Enhance your reputation and gain recognition for your work by presenting an abstract for the AAPG 2012 Annual Convention & Exhibition to be held 22-25 April 2012 in Long Beach, California. Industry professionals and students are invited to submit abstracts that relate to any of the topics listed below. Planned sessions and formats (oral or poster) may be modified depending on actual submittals. Visit [www.AAPG.org/LongBeach2012](http://www.AAPG.org/LongBeach2012) for abstract submittal updates and additional information.

## **Theme 1:**

### **Active Oil and Gas Fields – Development and Production**

Theme Chair: Tony Reid (Occidental of Elk Hills)

This theme will present state-of-the-art production and development geoscience and multidisciplinary studies as they are applied to both mature and recently discovered oil and gas fields worldwide.

Theme subcategories:

- Subsurface uncertainty management – How models help
- The geologic tools of field surveillance
- 3D and 4D models in mature fields – identifying remaining reserves
- Lessons from the deep GOM: Insights into depositional processes, structure, hydrocarbon systems, and Neogene and Paleogene geohistory
- Application of geophysics to mature oil and gas fields
- Reservoir characterization, geologic modeling and geostatistics
- Novel techniques in reservoir modeling and flow simulation: concepts and applications
- Other

## **Theme 2:**

### **Emerging Frontiers**

Theme Chair: Carlos Macellari (Repsol Exploracion S.A.)

This theme will showcase recent oil and gas discoveries, emerging exploration plays, and breakthroughs in geoscience technology worldwide.

Theme subcategories:

- Recent oil and gas discoveries and the keys to their discovery
- Emerging oil and gas plays worldwide (global exploration)
- Risk analysis of new ventures
- Leading-edge technologies used to identify emerging frontiers
- Regional frontier play analysis
- Other

## **Theme 3:**

### **Siliciclastics Reservoirs – Exploration and Characterization**

Theme Chair: Andrea Fildani (Chevron Energy Technology Co.)

This theme will cover the current trends and concepts of siliciclastic reservoir deposition and characterization as applied to both exploration and development projects.

Theme subcategories:

- Continental
  - Describing and interpreting fluvial and alluvial environments and reservoirs
  - Preservation potential of fluvial channel networks
- Shallow Marine
  - Describing and interpreting marine depositional environments and reservoirs
- Deep marine
  - Reducing deep-water stratigraphic uncertainty: outcrop, subsurface, and high-resolution seafloor data-based characterization of California's turbidites
  - Collection and utilization of analog data in modeling deep-water systems: outcrop, core, well logs and seismic
- Quantitative Stratigraphy
  - Interplay of autogenic and allogenic processes: Implications for stratigraphic interpretation
  - What difference does grain size make? sequence stratigraphy of coarse- and fine-grained systems
- Diagenesis and reservoir quality
  - Impact of microbial diagenesis on clastic and carbonate reservoir quality
  - Impact of early diagenesis on deep reservoir quality
  - The present is the key to the past: Application of the modern to reservoir quality Prediction
- Other

**Theme 4:****Carbonates and Evaporites – Exploration and Characterization**

Theme Chair: Sean Guidry (ExxonMobil)

This theme will present the current state of knowledge and research into carbonate reservoirs and evaporites in exploration plays and mature producing trends.

## Theme subcategories:

- Interpreting carbonate environments and reservoirs
- Carbonate diagenesis: products, processes and prediction
- Carbonates in rift systems: lacustrine to marine depositional systems (including South Atlantic Margin pre-salt)
- Seismic geomorphology: stratigraphic signature of hydrodynamic and environmental change
- Back in the mix: new insights and models for carbonate clastic transitions
- Basin to bedset: multiple scale organization in carbonate systems
- Quantitative carbonate stratigraphy: modern, outcrop, subsurface and modeling
- Carbonate reservoir characterization
- Deposits, architecture and controls of carbonate margin, slope and basinal settings
- Stratigraphic architecture and pore types associated with tight oil carbonate reservoirs
- Other

**Theme 5:****Unconventional Resources**

Theme Chair: Chris Werner (Shell Upstream Americas);

Vice-Chair: Steve Sonnenberg (Colorado School of Mines)

This theme will summarize the current state of thinking and look forward to the future of unconventional resources, including predictive geologic controls on unconventional reservoir performance.

## Theme subcategories:

- Oil shale reservoirs
- Shale gas reservoirs
- Tight gas reservoirs
- Heavy oil including tar sands
- Tight oil plays – can we crack them?
- Analysis and risking of unconventional plays and resources
- Coal bed methane
- Other

**Theme 6:****Basin Analysis and Petroleum Systems**

Theme Chair: Barry Katz (Chevron)

This theme will present leading edge concepts and ideas that cover the broader aspects of basin-scale petroleum systems and geo-histories.

## Theme subcategories:

- Basin modeling research
- Petroleum system modeling and basin-scale flow simulation
- Geochemistry and basin modeling of Circum-Pacific petroleum systems
- Description of petroleum systems worldwide
- Kinetics and transformation of kerogen
- Biodegradation and alteration
- USGS hydrocarbon research basin studies
- Other

**Theme 7:****Alternative Energy**

Theme Chair: W.C. "Rusty" Riese (Rice Univ.); Vice-Chair:

Stephen Testa (California State Mining &amp; Geology Board)

This theme will encompass presentations that cover energy resources, their exploration, and use that are outside conventional and unconventional oil and gas resources.

## Theme subcategories:

- Coal
- Geothermal energy
- Nuclear energy
- Uranium and other energy mineral research
- Gas hydrates
- Other

**Theme 8:****Environmental and Energy Research**

Theme Chair: Chris Smart (Occidental)

This theme will explore the relationship between environment and energy, and will cover a range of environmental and energy topics from safety and oil spill response to CO<sub>2</sub> capture and sequestration.

## Theme subcategories:

- Lessons learned from the Deepwater Horizon Macondo well oil spill: improving safety, maintenance and mitigation
- Environmental policies with respect to frac'ing technology
- Legislative and policy impacts
- Paleoclimate records as aids to interpreting present climate change trends
- CO<sub>2</sub> Capture and sequestration
- Methods for greening exploration for oil and gas
- Global warming and climate change - deep time paleoclimate
- Groundwater management and wastewater disposal
- Other



**Theme 9:****Structural Geology and Neotectonics**

Theme Chair: David Ferrill (Southwest Research Center);

Vice-Chair: Peter Hennings (ConocoPhillips)

This theme will present the state-of-the-art thinking and research into structural geology tectonics and geomechanics.

Theme subcategories:

- Plate tectonics and neotectonics: California and the Pacific Rim as a laboratory for plate to reservoir scale processes
- New models in contractional tectonics and fold-thrust belts: implications for exploration and production of hydrocarbons, including reservoir productivity
- New models in extensional tectonics: implications for tectonostratigraphic evolution and play element prediction
- New models in oblique and strike-slip systems: How well does the flower structure model hold up?
- Exploration in salt and deep water structural systems
- Impact of faulting, fracturing, and stress in shale and tight reservoirs
- Geomechanical modeling of natural and stimulated reservoirs
- Fault analysis and fault controlled traps
- Other

**Theme 10:****Geophysics and Seismology**

Theme Chair: Steven Getz (Consultant)

This theme will showcase leading-edge technology and recent advances in geophysics with special emphasis on integrating geology and geophysics in the exploration and production of natural resources.

Theme subcategories:

- Rock physics
- Seismic stratigraphy and 3D seismic geomorphology
- 4D seismic applications
- Microseismic
- Electromagnetics and remote hydrocarbon sensing
- Geology/geophysics integration case studies
- Potential field geophysics
- Other

**Theme 11: Geoscience Principles and Applications**

Theme Chair: Hilario Camacho (Occidental Oil and Gas)

This theme will cover a broad range of geological topics, and will focus on the application of various principles and technologies in the fields of natural resource exploration and production.

Theme subcategories:

- Stratigraphy and sedimentology
- Geochemistry
- Geochronology
- Hydrology and engineering geology
- Marine geology and oceanography
- Paleontology and biostratigraphy
- Geology of Southern California
- Astrogeology
- Education and public outreach
- Education: improving K-12 education in the field of energy
- The dawn of petroleum geology in California and the world
- Other

**AAPG and SEPM Student Poster Sessions**

Chair: Sean O'Connor (Aera Energy LLC) ,

Vice Chair: Mason Dykstra (Colorado School of Mines)

This will focus on the research and current work of student members of AAPG and SEPM.

## **TECHNICAL PROGRAM COMMITTEE**

General Chair .....	Kay Pitts
Technical Program Co-Chairs .....	Kurt Neher and Gene Fritsche
Field Trips Chair .....	Stefano Mazzoni
Short Courses Chair .....	Heidi Hoffower
SEPM Technical Program Vice Chair .....	Gareth Jones
EMD Technical Program Vice Chair .....	Stephen Testa
DEG Technical Program Vice Chair .....	Chris Phillips
DPA Technical Program Vice Chair .....	Marty Hewitt



# INFORMATION FOR PRESENTERS

Authors are invited to submit abstracts for the AAPG 2012 Annual Convention & Exhibition beginning this May. The deadline for submittals is 22 September 2011. The planned oral and poster session topics are listed, beginning on page two. To submit an abstract visit [www.AAPG.org/LongBeach2012](http://www.AAPG.org/LongBeach2012) and click on Abstract Submissions, then follow the directions to create an account.

## Items to keep in mind

- Abstracts should be a maximum of 2,500 characters and cover the objectives, procedures, results and conclusions.
- Evaluation and ranking of abstracts is based on relevance and timeliness of subject matter; usefulness of contribution to the advance of knowledge, techniques or practice; and overall clarity, organization and presentation of ideas.
- Titles are required — they should be brief and state the topic.
- Abstract titles should not include company names.
- In keeping with the spirit of the convention, presenters must refrain from making subtle or blatant sales pitches including but not limited to: repeated use of product names, trade names or pictures, or repeated use of company logo.
- Student submissions are encouraged to all sessions.
- Submit your abstract in the form in which you would like it published. Abstracts will not be edited.
- Authors will be notified of acceptance or rejection in November 2011.
- Authors of accepted abstracts will have the option to submit an extended version of their abstract which will then be reproduced on CD-ROM and made available at the convention. Authors are invited to have their work, both oral and poster presentations, published on AAPG's online Search and Discovery to preserve their work for future reference.

*Important: AAPG has no funding for speakers. Do not submit an abstract unless at least one author is certain to attend the convention. All session chairs, speakers and poster presenters must register to attend the convention. No exceptions will be made.*

## Oral Sessions

Single screen electronic presentations will be the only format available. Each session room is equipped with the following:

- High intensity projector
- Desktop computer
- Large format screen
- Speaker timer
- Laser pointer
- Lapel microphone
- Lectern microphone

35mm slide projectors, overhead projectors and/or movie projectors, Internet connections and dual screens will not be available. Detailed speaker information will be sent to you upon acceptance of your abstract.

## Poster Sessions

Half-day poster sessions are planned for Long Beach. Presenters are required to be in their booths a minimum of two hours while their posters are on display.

## Submittal Instructions

Abstracts for all sessions should be submitted online at [www.AAPG.org/LongBeach2011](http://www.AAPG.org/LongBeach2011). If you cannot submit your abstract online, please contact:

Alicia Foresee  
Convention Technical Program Coordinator  
PH: +1 918 560 2616  
FAX: [aforesee@AAPG.org](mailto:aforesee@AAPG.org)

Permission for AAPG to publish your abstract is implied when you submit your paper for consideration to the 2012 Annual Convention & Exhibition.

## No-show Policy

The AAPG Executive Committee has established that presenters who fail to show up for their scheduled presentations without notifying AAPG of their cancellation at least five weeks in advance of the start of the program, will not be allowed to present papers or posters at any AAPG-sponsored technical meeting for a term of three (3) years.



## THE TOM DIBBLEE GEOLOGIC MAP PROJECT IS COMPLETE

### ALL 419 MAPS ARE AVAILABLE IN DIGITAL AND PAPER FORMATS

The USGS's **National Geologic Map Database** project lists the Dibblee Maps in their catalog by map description with order information. Shortly they will be adding high quality Geo-referenced TIFF files to each catalog/map entry for previewing through a special viewer. This will allow zoom capabilities and a search by coordinates. The maps cannot be downloaded, however, links to the AAPG Datapages and Dibblee Museum sales will be included.

The AAPG is featuring Tom's maps in digital format in the **Datapages** section on their web site for downloading as georeferenced, layered PDF files by end users. The entire Dibblee Geologic Map Collection is now available for purchase on the *Datapages*. In addition, the high quality, Geo-referenced TIFF files from the NGMD will be available for purchase on the *Datapages*. Paper maps are still available for purchase on the Santa Barbara Museum of Natural History web page.

**GIS Dibblee Maps and Other Uses** - Blocks of the Adobe Illustrator Dataset as CS4 .ai files can still be purchased. Data in this set is in an unrestricted layered format to allow the user to examine and manipulate the data, and to incorporate it into their dataset. We are also currently able to seamlessly combine contiguous maps and convert Dibblee files into a variety of GIS formats. Inquire about these conversions at <jmainc@earthlink.net>

Jason and I have been vigorously soliciting funds to digitize the final maps of the Dibblee Collection that were prepared by hand. In order to accomplish our goal we went out on a ledge and finished the maps without securing the final funding. At this point we are only \$50,000 short of paying for the digitizing of the last of the maps. I am asking for you to consider helping us to obtain funding for all or part of the final funding. Help us to finish this project. This can be accomplished in several ways. Of course an outright gift is acceptable, however, the purchase of a dataset or special purchases of CS4 .ai files will help to reimburse the museum for the completion of the final maps.

John Minch, Emeritus Editor, Thomas Dibblee Jr. Geological Center jmainc@earthlink.net



GEOLOGICAL LOGGING INC.  
9229 Beatty Drive, Suite B  
Sacramento, CA 95826  
Telephone 916-452-9570  
Cell 952-8975 Fax 452-9573  
geolog@sbcglobal.net

ERNIE BURROUGHS  
President/Owner  
Registered Geologist No. 1628



RESERVOIR CHARACTERIZATION  
GEOLOGY  
PETROPHYSICS  
DATABASE MANAGEMENT  
DIGITIZING & SCANNING

**EarthQuest Technical Services, LLC**

*David R. Walter*

drwalter@eqtservices.com  
www.eqtservices.com

2201 'F' Street  
Bakersfield, CA 93301  
661•321•3136



The 31st Annual AAPG Leadership Conference was held August 12-14, 2011 at the University of Colorado and the Millennium Harvest House in Boulder, CO. The meeting was hosted by Dr. Paul Weimer, President of AAPG and Professor in Geology at the University of CO.

There were 141 attendees including 11 AAPG staff from Tulsa. The attendees also included the Executive Committee of AAPG, the Advisory Council, Division Officers, AAPG Officer Candidates, Section/Region/House of Delegate Representatives, Associated/Sister Societies, Affiliated Societies, Committees/Representatives/Projects, Keynote Speakers, Young Professionals and Students/Student Volunteers.

There were 10 attendees from the Pacific Section including; Kurt Neher (Advisory Council Representative), Stephen Testa (President of EMD), Don Clarke (AAPG President-elect Candidate), Bob Lindblom (HOD Representative from NCGS), John Minch (President of Pacific Section AAPG), Jessica Moore (Chair of PROWESS), Tim Elam (President of SJGS), Kay Pitts (Chair of 2012 AAPG Annual Meeting in Long Beach), Brian Blackstone (Young Professional from Pacific Section), and Mark Maroun (Student from San Diego State University).

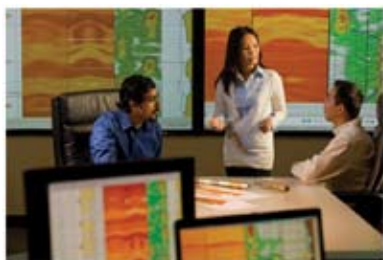
There were Pre-leadership Days activities on Thursday and on Friday prior to the official start of the conference, which concluded with a social reception and dinner Friday evening at the Hotel.

The Conference began on Saturday in the Benson Building on the campus of the University. The Building houses the geology department and its library. In the AM there was a welcome from Paul Weimer, introductions of the attendees, various reports from AAPG, and importantly, the introduction of AAPG's new Executive Director David Curtiss, the former Head of AAPG's Geoscience and Energy Office in Washington, DC. The morning concluded with a welcome from the Chancellor of the University, Phil DiStefano, and a talk on the Hubbert Curve by Dr. Tom Ahlbrandt.

After lunch, held in the beautiful Folsom Football Field North Club Level, there were presentations by the AAPG candidates for national office including our own Don Clarke, candidate for President-elect in 2013.

In the afternoon there were a number of Focus Groups made up of attendees with interest in that Group's subject. The Group subjects were on the AAPG Strategic Plan, Publications, Young Professionals and Students, Membership Simplification, and New Business Opportunities. The day concluded with a very nice reception and dinner also held at the Club Level.

Sunday morning after breakfast at the Hotel the meeting returned to the Benson Building and the general session, which included a series of 15 minute presentations by each Focus Group's chair, summarizing the Group's sessions held Saturday afternoon. David Curtis then gave the Executive Director's report and closing remarks, followed by "Looking Forward" by Paul Weimer. The AAPG 2011 Leadership Days officially concluded at 1PM following a luncheon at the Club Level.



**Western US/US Land/Wireline Systems**

**Sales: +1 661.334.3800 | Fax: +1 661.334.3808**

**Operations: +1 661.765.2020 | Fax: +1 661.765.2150**

**<http://www.bakerhughes.com> | Advancing Reservoir Performance**



## PUBLICATIONS OF THE AAPG PACIFIC SECTION ON DVD

AAPG Datapages and the AAPG Pacific Section announce our recent release of the digital archive, "Publications of the AAPG Pacific Section on DVD" released by the AAPG Bookstore.

This fully-searchable volume contains 132 publications of the Pacific Section published from 1947-2001. Included are special publications, field trip guidebooks, and 32 special Cross Section publications. All documents are included as Adobe Acrobat (PDF) format.

Price is \$145.00

To order send a check or CC info to:

PSAAPG Publications  
P.O. Box 1072  
Bakersfield, CA 93302

Or email the PSAAPG Publication Chair at  
larryknauer@chevron.com

This DVD may also be order through AAPG Datapages.

## Special Core Analysis In Bakersfield



**Core Lab**  
RESERVOIR OPTIMIZATION

### Laboratory Services Include:

- Capillary Pressure • Relative Permeability • Formation Damage Studies • Electrical Analyses • Environmental Studies

Core Laboratories, Inc • 3437 Landco Drive • Bakersfield, CA 93308  
Tel: (661) 325-5657 • Fax: (661) 325-5808

## Alaska Geological Society

www.alaskageology.org

P. O. Box 101288  
Anchorage, AK 99510

Contact: Tom Morahan  
907.230.1672



Luncheon meetings are held monthly September through May, usually on the third Thursday of the month, at the BP Energy Center (1014 Energy Court) from 11:30 a.m. to 1:00 p.m. The hot lunch cost is \$20 for members with reservations; \$22 for non-members with reservations; and \$25 without reservations. The box lunch cost is \$13 for members with reservations, \$15 for non-members with reservations, and \$18 without reservations. For reservations, call the AGS reservation voice mail at 907-258-9059 or contact David Hite at hiteconsult@acsalaska.net by noon on Monday before the meeting.

President:	Tom Morahan	907.230.1672	tmorahan@petroak.com
President-Elect:	Ken Helmold	907.269.8673	ken.helmold@alaska.gov
Vice-President:	Ken Helmold	907.269.8673	ken.helmold@alaska.gov
Secretary:	Chad Hults	907.786.7417	chults@usgs.gov
Treasurer:	Alan Hunter	907.263.7947	alhunter@chevron.com
Past-President:	Tom Homza	907.770.3701	Thomas.Homza@shell.com

## Coast Geological Society

www.coastgeologicalsociety.org

P. O. Box 3055  
Ventura, CA 93006

Contact: Mike Nelson  
805.535.2058



Dinner meetings are held monthly September through May, usually on the third Tuesday of the month, at the Poinsettia Pavilion, 3451 Foothill Road in Ventura. Social hour starts at 6:00 p.m., dinner is served at 7:00 p.m., and the talk starts at 8:00 p.m. The cost of dinner with reservations is \$20 (members), \$25 (non-members), or \$10 (students and K-12 teachers); the talk is free. For reservations, please email Jerry Nichols (secretary@coastgeologicalsociety.org). Reservations should be made by 4:00 p.m. on the Friday before the meeting.

President:	Jon Schwalbach	805.648.8518	president@coastgeologicalsociety.org
Past President:	Mike Nelson	805.535.2058	pastpresident@coastgeologicalsociety.org
Vice President:	John Harris	805.407.7644	vicepresident@coastgeologicalsociety.org
Secretary:	Jerry Nichols	310.245.8897	secretary@coastgeologicalsociety.org
Treasurer:	Ed Magdaleno	805.535.2086	treasurer@coastgeologicalsociety.org

## Los Angeles Basin Geological Society

www.labgs.org

515 So. Flower Street, Ste 4800  
Los Angeles, CA 90071

Contact: Bill Long  
213.225.5900 x 205



Luncheon meetings are held monthly September and October; and January through June, usually on the fourth Thursday of the month, in the Monarch Room at The Grand at Willow Street Conference Centre (4101 E. Willow Street) in Long Beach. Lunch is served at 11:30 a.m., and the talk starts at 12:15 p.m. The cost is \$20 (with reservations), \$25 (without reservations), or \$0 (students are covered by Halliburton and Schlumberger). Reservations can be made online at www.labgs.org or by contacting Marieke Gaudet at 562.624.3364 or marieke\_gaudet@oxy.com. Reservations must be made prior to Tuesday before the meeting.

President:	Bill Long	213.225.5900 x205	william.long@breitburn.com
Vice President/Program Chair:	Greg Hummel	213.225.5900 x251	ghummel@energy-reserves.com
Treasurer:	Bert Vogler	562.432.1696	hvogler@kleinfelder.com
Secretary/webmaster:	Rebecca Lanners	562.624.3364	Becca_Lanners@oxy.com
Scholarship Program	Jean Kulla	949.500.3095	k2mobile@msn.com

## Northern California Geological Society

www.ncgeolsoc.org

9 Bramblewood Court  
Danville, CA 94506-1130

Contact: Barb Matz  
Barbara.Matz@shawgrp.com



Evening meetings are held monthly September through May, usually on the last Wednesday of the month, at the Masonic Center (9 Altarinda Road) in Orinda. Social hour starts at 6:30 p.m., and the talk starts at 7:00 p.m. (no dinner). For reservations, contact Dan Day at danday94@pacbell.net before the meeting. Cost is \$5 per regular member; \$1 per student member; and \$1 per K-12 teachers.

## Northwest Energy Association

www.nwenergyassociation.org

P. O. Box 6679  
Portland, OR 97228-6679

Contact: Tim Blackwood  
503.656.0156



Breakfast meetings are held monthly September through May, usually on the second Friday of the month, at the Multnomah Athletic Club (1849 SW. Salmon Street) in Portland. Meeting time is at 7:30 - 9:00 am. The cost is \$18. For information or reservations, contact Steve Walti.

President	Tim Blackwood	tblackwood@pacificgeotechnicalllc.com
Treasurer	Steve Walti	steven.walti@nwnatural.com

## Sacramento Petroleum Association

P. O. Box 571  
Sacramento, CA 95812-0571

Contact: David Hartley  
530.304.4277



Luncheon meetings held monthly January through November, on the third Wednesday of the month. Location: Club Pheasant Restaurant in West Sacramento. The meetings starts at noon. The cost is \$16 - \$20. For information or reservations, contact Pam Ceccarelli.

President:	Jerry Reedy	916.486.2643	JWR5532@aol.com
Vice-President:	David Hartley	530.304.4277	drilmax1@aol.com
Secretary	Derek Jones	916.859.4710	djones@gasbiz.com
Editor/Treasurer	Pam Ceccarelli	916.439.0400	pc626@comcast.net

## San Joaquin Geological Society

www.sjgs.com

P. O. Box 1056  
Bakersfield, CA 93302

Contact: Tim Elam  
paselam@peoplepc.com



We have dinner meetings on the second Tuesday of the month at the American Legion Hall at 2020 "H Street" in Bakersfield. There is an icebreaker at 6:00 pm, dinner at 7:00 pm, and a talk at 8:00 pm. Dinner is \$20.00 for members with reservations and \$25.00 for nonmembers, \$25.00 for members without reservations and \$30.00 for nonmembers without, and the talks are free.

President:	Tim Elam	paselam@peoplepc.com
Past President:	Jack Grippi	JGrippi@aeraenergy.com
President-Elect:	Jeff Gartland	Jeff_Gartland@oxy.com
Vice-President:	Stephano Mazzoni	Stephano_Mazzoni@oxy.com
Secretary:	Ariel Auffant	AAuffant@chevron.com
Treasurer:	Kathy Smith	kathysmith@pacseis.com

- Images (graphics, photos, and scans) must be at least 300 dpi resolution. Text should be scanned at least 600 dpi.
- Scanned photos, illustrations (line art) or logos must be scanned at 300 dpi minimum and saved as a tiff or eps.
- Avoid clip-art and images from the internet. These images are low-resolution (72 dpi).

### Advertising Rates

Members	Single Issue	Year (6 issues)
Full Page	\$400.00	\$1600.00
Half Page	\$250.00	\$1050.00
Quarter Page	\$150.00	\$650.00
Business Card		\$250.00

### Societies Free Advertising

Convention Societies	Unlimited Space 1/4 Page	PSAAPG Newsletter AAPG Explorer
----------------------	-----------------------------	------------------------------------

### Newsletter Deadline

**November & December Issue**

**November 1st**





*Photo courtesy of Andreas Mulch*

## Investing in Energy to Support Education and Research



“Today’s computational capacity and the availability of large volumes of data from ground-based observations and satellites offer new opportunities for understanding how the Earth system works and how human activities interact with Earth processes. The Stanford Center for Computational Earth and Environmental Science will enable the development of sophisticated models to address questions about energy and freshwater resources, natural hazards, climate change, and other global issues.”

**Jerry M. Harris**, Founding Director, Center for Computational Earth and Environmental Science, Professor and Former Chair, Department of Geophysics, Stanford University; Director, Stanford Wave Physics Laboratory; Past Distinguished Lecturer, Society of Exploration Geophysicists, American Association of Petroleum Geologists, and Society of Petroleum Engineers.

The alumni-managed Stanford Petroleum Investments Funds own, manage, and acquire producing oil and gas royalties and other energy investments. Income from these investments provides essential discretionary funding in support of energy and environmental education and research and other programs of the Stanford School of Earth Sciences. The Petroleum Investments Funds provided seed funding to help launch the Stanford Center for Computational Earth and Environmental Science.

If you would like to sell or donate producing oil and gas royalties or learn more, visit <http://earthsci.stanford.edu/alumni/support/pif> or call or email David Gordon, Executive Administrator, Petroleum Investments Committee, Stanford School of Earth Sciences, at (650) 723-9777 or [dsgordon@stanford.edu](mailto:dsgordon@stanford.edu) to see how you can help.





At Chevron, you'll join a team with the technology to take on big challenges, the integrity to do it responsibly, and the drive to keep the world moving forward. Are you up to the job?

## We're Hiring Experienced Professionals

### San Ramon, CA

Requisition No.	Position
032217777	Senior Seismic Acquisition and Processing Research Geophysicist
032217311	Research Scientist, Shallow Marine/Fluvial Stratigrapher
032217068	Research and Development Carbonate Geophysicist
032218294	Geophysical Application Software Development Specialist

### Bakersfield, CA

Requisition No.	Position
006417859	Development Geologist

To learn more about these positions and to apply, visit [www.chevron.com/careers](http://www.chevron.com/careers) and search by the indicated requisition number. You can also learn about other geosciences jobs in TX, LA, and PA.

**JOIN THE  
CHALLENGE.**



Human Energy™

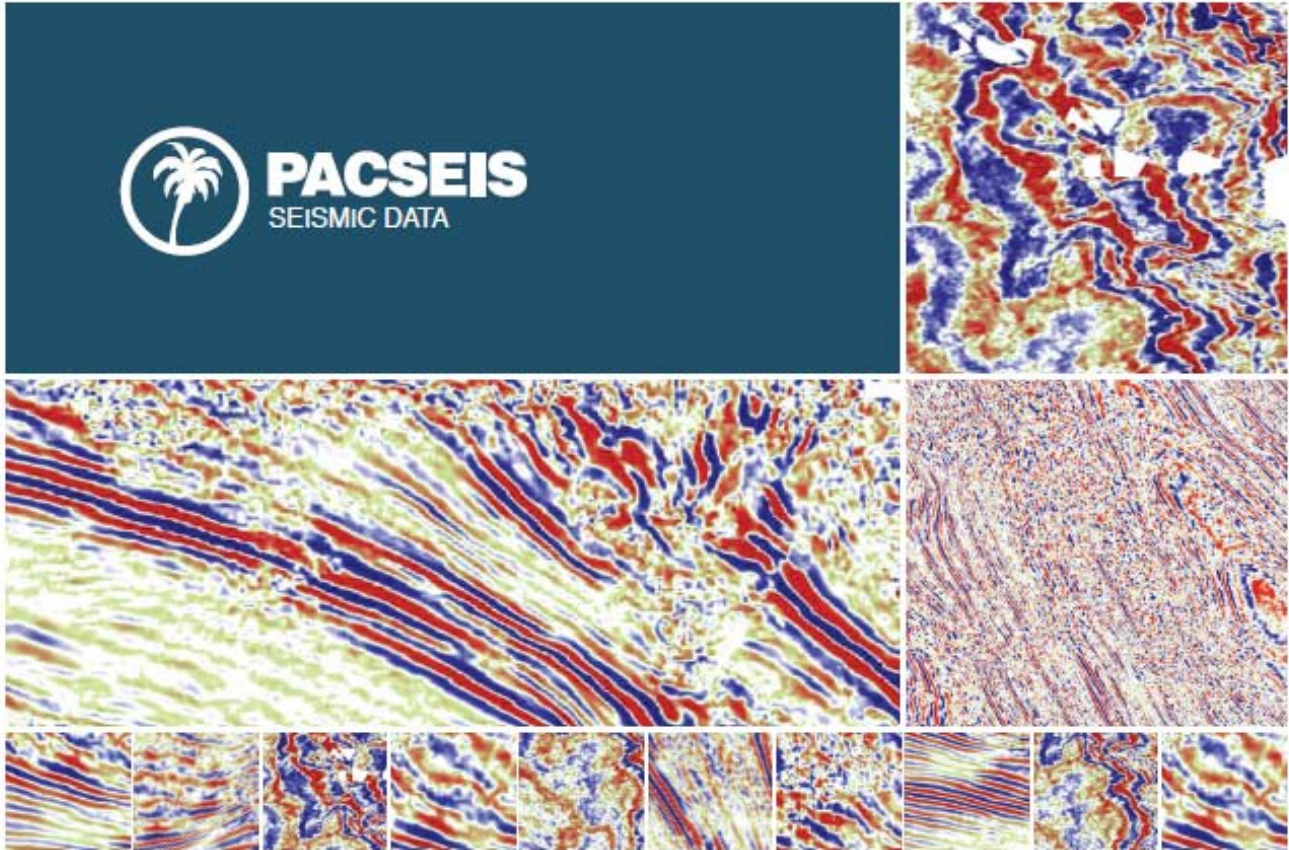
An equal opportunity employer that values diversity and fosters a culture of inclusion. CHEVRON, the CHEVRON logo and HUMAN ENERGY are registered trademarks of Chevron Intellectual Property LLC. © 2011 Chevron U.S.A. Inc. All rights reserved.





PACIFIC SECTION AAPG  
P. O. Box 1072  
BAKERSFIELD, CA 93302

PRESORTED  
STANDARD  
U.S. POSTAGE PAID  
BAKERSFIELD, CA  
PERMIT NO. 1163



PACIFIC SEISMIC COMPANY

## The leader in subsurface information

### RESOURCES THAT DELIVER THE DIFFERENCE

- One of the largest seismic databases available for license
- Seismic available for immediate license  
Over 500,000 line miles of 2D data located in domestic United States (onshore & offshore)
- 2,500 square miles of 3D surveys

### RECENTLY ACQUIRED SEISMIC DATABASES BY PACIFIC SEISMIC CO.

- Chevron USA California, OXY USA Nationwide (including Arco & Enron)
- Santa Fe energy, TXO, Cities Service Oil & Gas Nationwide
- Southern Pacific, PG&E/ NGC, SOHIO

**PACIFIC SEISMIC COMPANY** | Your Full-Service Seismic Brokerage & Acquisition Company

EXPLORATION CONSULTING

PROSPECT FINANCING

PROJECT DEVELOPMENT

Tel (661) 322-1171 | Fax (661) 322-1181 • [www.pacseis.com](http://www.pacseis.com) | Bakersfield | Houston | Denver