



Pacific Petroleum Geology



Pacific Section • American Association of Petroleum Geologists

July & August 2011



Discovery

End of an Era

Get More from your Core



With reservoirs becoming increasingly complex, you need the most accurate information you can get to better understand your reservoir.

Weatherford Labs helps you get more from your core by combining an unsurpassed global team of geoscientists, engineers, technicians and researchers with the industry's most comprehensive, integrated laboratory services worldwide. From core analysis, sorption, geochemistry and isotopic composition to detailed basin modeling and comprehensive data packages, we provide you with real reservoir rock and fluid information that hasn't been distilled by a simulator or iterated by software.

We call it "The Ground Truth™" – giving you the accurate answers you need for better reservoir understanding. You'll call it a better return on your reservoir investment. To learn more, contact TheGroundTruth@weatherfordlabs.com.



Weatherford®
LABORATORIES
weatherfordlabs.com

2010-2011 OFFICERS

President	John Minch 805.898.9200 president@psaapg.org
President-Elect	John Minch 805.898.9200 president-elect@psaapg.org
Vice President	Jeff Gartland 661.869.8204 secretary@psaapg.org
Secretary	Tony Reid 661.412.5467 vice-president@psaapg.org
Treasurer 2009-2011	Cheryl Blume 661.864.4722 treasurer@psaapg.org
Treasurer 2010-2012	Jana McIntyre 661.869.8231 treasurer@psaapg.org
Past President	Cynthia Huggins 661.665.5074 president@psaapg.org
Editor-in-Chief 2010-2012	Ed Washburn 661.654.7182 editor@psaapg.org

STAFF

Web Master	Bob Countryman 661.589.8580 webmaster@psaapg.org
Membership Chair	Emily Loera 661.859.9713 membership@psaapg.org
Publications Chair	Larry Knauer 661.392.2471 publications@psaapg.org LarryKnauer@chevron.com
Advisory Council Representative 2009-2012	Kurt Neher 661.412.5203 kurt_neher@oxy.com

Cover photo: At NASA's Kennedy Space Center in Florida, space shuttle Discovery begins its nighttime trek, known as "rollout," from the Vehicle Assembly Building to Launch Pad 39A.

Image credit: NASA/Frankie Martin, Sept. 20, 2010

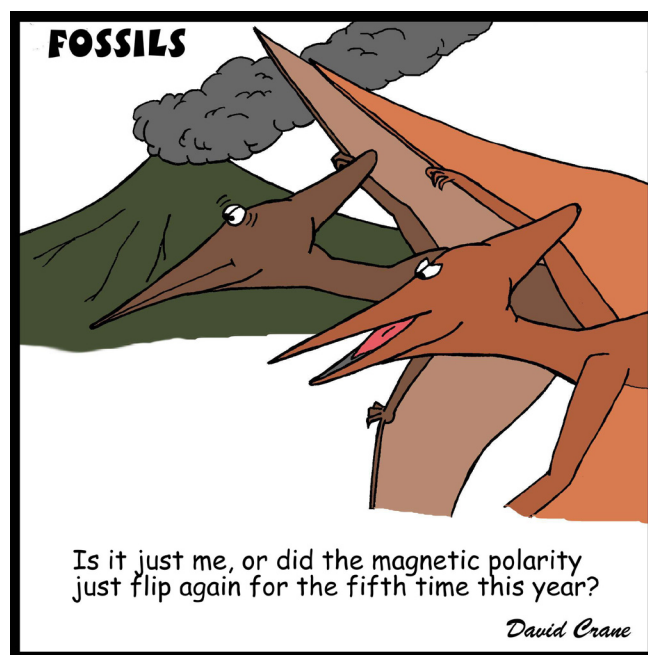
www.nasa.gov

EVERY ISSUE

4	Message from the President • J. Minch
5	Editor's Corner • E. Washburn
6	PSAAPG News
10	Publications
16	Member Society News

THIS ISSUE

7	PSAAPG Honors & Awards: 2011 Recipients • R. Lindblohm
11	2011 PSAAPG Convention Highlights





I thought about sitting down and having a fireside chat with the members. Instead I decided to throw out some ideas and goals for the coming year. None of them seem to be really new. However, all of them are worth a try. At the risk of sounding like a broken record, here goes.

At the age of 71, I am probably among the oldest group of Presidents. I actually received my MA before the advent of Sea Floor Spreading. Then we called it "Continental Drift". As I look around, I see the graying of the membership and often wonder where we are heading.

I can see that the 21st century has brought a renewed interest in the young professional. As a rule they are better educated than we are (us older members) and have better tools (my dissertation was typed on a typewriter and I used a slide rule for calculations). Anyone under 40 know what a Leroy was?

To get to the point, we need to push harder to bring the Young Professionals into the mainstream. This is one of the prime goals of the National AAPG and is/should be one of ours. I will be working with this Young Professional group at the Leadership Conference and expect to bring much back to the Pacific Section.

We have a number of student chapters at the various schools in the Pacific Section. We need more. Why don't we have more? Time and faculty leaders are needed to bring continuity to the chapters. There is no substitute for an enthusiastic faculty leader at each school. Without faculty leadership, the chapter often dies when active students move on. We need to devote some time to these faculty leaders as well as the students. Alumni also need to be brought into the mix. Some of the more successful schools, such as San Diego State, have active petroleum geologists (Kip Herring) working with them (SDSU is right up there in the Imperial Barrel Award competition each year).

Going further, we need to devote more energy to the pre-professional by continuing our work on the university regent's acceptance of High School geology at the University level. This work also needs to be directed to the HS and the upgrading of the HS course content, which takes us to training of the HS teachers, and from there to work on helping the K-12 teachers with their curriculum.

When I taught at Saddleback, I had a twice-yearly dig in our campus fossil bed for 5th graders. One year the chosen class was asked to vote on going to Disneyland, Knotts Berry Farm, or the Saddleback fossil bed. They voted 10 to 1 to dig for fossils. I had a number of those students and their parents sign up for my geology classes, and more than a few are now geologists. We were getting them early.

I had better close now before I get into early childhood development.

In short, I am looking forward to this next year. - John



Image Credit: NASA/Bill Ingalls

By the time this issue is printed and mailed, the space shuttle era will be complete. Without getting into the arguments about government funded versus private space flight, manned versus unmanned space exploration, etc., I think it is appropriate to reflect on the contribution the 30 year space shuttle program has made to science in general, and earth science in particular.

I was three years old when the first shuttle launched in 1981, and I remember getting up early to watch several launches or landings as a kid. Occasionally they would broadcast them in school (unfortunately this stopped following the Challenger tragedy).

While lacking the pioneering feel of earlier NASA programs, the space shuttle, and eventually the international space station and the huge numbers of satellites in low Earth orbit, have made viewing images or videos of our planet from space routine. This ability has truly been revolutionary for geology and many other scientific disciplines.

From those of us who enjoy quickly pulling up Google Earth to show someone the trace of the San Andreas Fault, the distribution of mountain ranges around the Pacific Rim, or the difference between a wave-dominated and river-dominated shoreline, a big thank you to all those involved in the program that made exploring our planet from space seem routine.

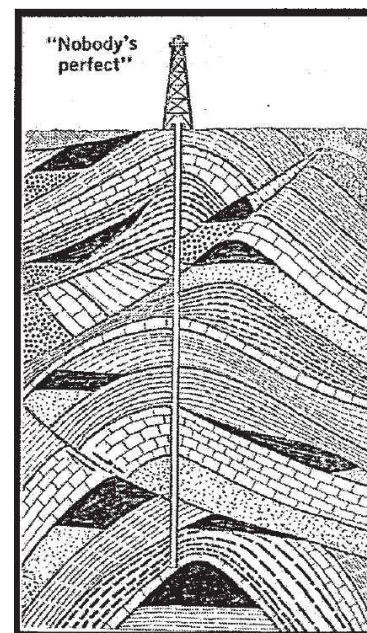
Marty Hall US Marketing / Sales Manager	7765 Windwood Way P.O. Box 549 Parker, CO 80134 USA
 Geokinetics™	P: +1(720) 851.6152 F: +1(720) 851.6153 C: +1(303) 885.8860
	geokinetics.com
	marty.hall@geokinetics.com

PSAAPG Election Do-Over

There is a very good reason that the 2011 election results are not being reported here.

Due to a mailing list error, the election ballot was not mailed out to the entire membership. New ballots are on their way (to everyone this time) for a re-vote.

Even if you returned a completed ballot the first time around, you must vote again in order for your vote to count. Return postage will be pre-paid on the new ballot.



Stanford University Geologic Studies of the San Joaquin Basin, 1980-2010

Stephan A. Graham, W.J. and M.L. Crook Professor
School of Earth Sciences, Stanford University, Stanford, California

The dissertations reproduced on this DVD largely predate the digital era, so many have been scanned from original hard copies of variable states of preservation; as a result, the quality varies in this product. The original dissertations are on file and accessible to the public at Branner Earth Sciences Library, School of Earth Sciences, Stanford University. Scans for this DVD derive from two sources. Some were produced as part of a program at Stanford to digitize all older dissertations, with thanks to Julie Sweetkind-Singer, (Acting Head Librarian) and her staff at Branner Library, for facilitating access to previously scanned dissertations. However, the majority of the dissertations in this collection were scanned pro bono by PayZone, Inc. of Bakersfield, thanks to the considerable efforts of Deborah Olson and her colleagues. Larry Knauer, Pacific Section AAPG, encouraged and facilitated production of the DVD. Ultimately, principal credit for this compilation goes to Deborah Olson, who first suggested the idea of this DVD in order to facilitate greater public access to these dissertations, because most were previously unpublished or published in regional publications of limited circulation. This body of research would not have been possible without the support of the San Joaquin Project consortium member companies, which over time included: Amerada-Hess, Amoco, Arco, BP Alaska, Champlin, Chevron, Cities, Conoco, Exxon, Getty, Gulf, Husky, Marathon, Mobil, Natural Gas Corp, Occidental, Phillips, Santa Fe Energy, Shell, Sohio, Superior, Tenneco, Texaco, and Unocal.

A 2-DVD set containing the information described above may be purchased from the Pacific Section American Association of Petroleum Geologists (PSAAPG) Publications Committee for \$50.00 by contacting (and including a check or credit card information and a shipping address)

PSAAPG Publications
P.O. Box 1072
Bakersfield, CA 93302

or

Larry Knauer (Publications Chair)
larryknauer@chevron.com
661-392-2471

The following awards were presented by the PSAAPG Honors and Awards Committee at the May 2011 convention in Anchorage:

Committee Members:

Bob Lindblom (Chair, Northern CA), Tom Wright (Northern CA), Jack H. West (San Joaquin Valley CA), Tom Hopps (Coastal Area CA), G.C. "Butch" Brown (Coastal Area CA), Don Clarke (Southern CA), Bob Countryman (San Joaquin Valley CA)

H. Victor Church Memorial Award

The H. Victor Church Memorial Award is given by the Pacific Section American Association of Petroleum Geologists in recognition of the best poster presented at the annual Pacific Section meeting. The H. Victor Church Memorial Award was established as the result of individuals wanting to build a lasting memorial to the technical prowess of Dr. H. Victor Church. The focus of the award is on creative thinking toward new ideas in exploration, development geology, or foundational geology. Peers judge the posters at each session and scores are compiled and reviewed by the convention judging committee to determine the overall winner.

The winner for the best poster at the 2010 Pacific Section AAPG convention held in Anaheim, California May 27–29 is **Meng He** with the Department of Geological and Environmental Sciences, Stanford University, California. Mr. He presented the poster entitled ***One-Dimensional Burial History Model Sheds New Insights into the Petroleum Systems in the Vallecitos Area and Oil Field, San Joaquin Basin, CA.***

A. I. Levorsen Memorial Award

The A. I. Levorsen Memorial Award is given by the national American Association of Petroleum Geologists in recognition of the best paper presented at each AAPG section meeting, with particular emphasis on creative thinking toward new ideas in exploration and developmental geology. The award was established as the result of contributions from many individuals and societies who wished to contribute to a lasting memorial to Dr. A. I. Levorsen. AAPG members who volunteer their time at each meeting judge the papers in each session. The session scores are compiled and reviewed by the convention judging committee to determine the overall winner.

The winner of the A. I. Levorsen Memorial Award for the best paper at the 2010 Pacific Section AAPG Convention held in Anaheim, California May 27–29 is **Grant Garven**, a professor with the Department of Geology, Tufts University, Medford, MA. Dr. Garven presented the paper entitled, ***A Geohydrodynamic Study of the Role of Faults on Petroleum Migration in the California Borderland Basins.*** The paper was co-authored by **Byeongiu Jung**, Department of Geology, Tufts University, and **James R. Boles**, Department of Earth Science, University of California Santa Barbara, California.

REAY ENTERPRISES

William G. Reay

112 Arabella Dr
Fort Davis, TX, 79734
432.426.2443

wgreay@mztv.net

Age dating and environmental determinations of the LA Basin, the Ventura Basin, the San Joaquin and Sacramento sections, as well as the Alaskan Cook Inlet and Post Paleozoic North Slopes section

Distinguished Service Award

The Distinguished Service Award was defined and proposed by the Section's Executive Committee and passed by the membership in 2002. It was first presented at the Section's annual meeting in Long Beach in 2003. The award is bestowed upon members "in recognition of singular and beneficial long-term service to the Section and or affiliated Societies. The term singular does not necessarily mean without precedent, But rather the activity is specific as distinguished from general service."

This year the Section honors:

Curtis P. Henderson



David Miner



Gregory C. Wilson, Ph.D.



Distinguished Educator Award

The Distinguished Educator Award is given by the Pacific Section in recognition of distinguished and outstanding contributions to geological education and counseling of students.

This year the Section honors:

Kristine J. Crossen, Ph.D.
University of Alaska Anchorage
Anchorage, AK

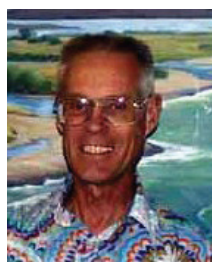


Honorary Life Membership

Honorary Life Membership is the Pacific Section's highest honor. It is bestowed upon members who have distinguished themselves by their contributions and devotion to the science and profession of petroleum geology, and by outstanding service to the Pacific Section.

This year the Section honors:

A. Eugene Fritsche, Ph.D.



Charles G. (Gil) Mull



See full citations and award descriptions at psaapg.org

Friends of the Pleistocene Field Trip!



Plan to meet up with your fellow Friends of the Pleistocene for an overview of active faults, lakes, soils, and regional deformation across the southern Sierra and southern Walker Lane.

Many more details will be headed your way as we sort them out, so message us at fop2011@gmail.com if you're not already on the email list.



DHISERVICES

Formation Evaluation Specialists

www.dhiservices.com

Les Collins

Regional Operations Manager

2202 Zeus Court
Bakersfield, CA 93308
Tel: +1 (661) 588-8310
Fax: +1 (661) 588-8322
Cell: +1 (661) 742-2720
Email: lcollins@dhiservices.com

THE TOM DIBBLEE GEOLOGIC MAP PROJECT IS COMPLETE
ALL 419 GEOLOGIC MAPS ARE NOW AVAILABLE
ALL 419 MAPS ARE AVAILABLE IN DIGITAL AND PAPER FORMATS

The USGS's **National Geologic Map Database** project lists the Dibblee Maps in their catalog by map description with order information. Shortly they will be adding high quality Geo-referenced TIFF files to each catalog/map entry for previewing through a special viewer. This will allow zoom capabilities and a search by coordinates. The maps cannot be downloaded, however, links to the AAPG Datapages and Dibblee Museum sales will be included.

The AAPG is featuring Tom's maps in digital format in the **Datapages** section on their web site for downloading as georeferenced, layered PDF files by end users. The entire Dibblee Geologic Map Collection is now available for purchase on the **Datapages**. In addition, the high quality, Geo-referenced TIFF files from the NGMD will be available for purchase on the **Datapages**. Paper maps are still available for purchase on the Santa Barbara Museum of Natural History web page.

GIS Dibblee Maps and Other Uses - Blocks of the Adobe Illustrator Dataset as CS4 .ai files can still be purchased. Data in this set is in an unrestricted layered format to allow the user to examine and manipulate the data, and to incorporate it into their dataset. We are also currently able to seamlessly combine contiguous maps and convert Dibblee files into a variety of GIS formats. Inquire about these conversions at <jmainc@earthlink.net>

Jason and I have been vigorously soliciting funds to digitize the final maps of the Dibblee Collection that were prepared by hand. In order to accomplish our goal we went out on a ledge and finished the maps without securing the final funding. At this point we are only \$50,000 short of paying for the digitizing of the last of the maps. I am asking for you to consider helping us to obtain funding for all or part of the final funding. Help us to finish this project. This can be accomplished in several ways. Of course an outright gift is acceptable, however, the purchase of a dataset or special purchases of CS4 .ai files will help to reimburse the museum for the completion of the final maps.

John Minch, Emeritus Editor, Thomas Dibblee Jr. Geological Center jmainc@earthlink.net

Geolog

GEOLOGICAL LOGGING INC.
 9229 Beatty Drive, Suite B
 Sacramento, CA 95826
 Telephone 916-452-9570
 Cell 952-8975 Fax 452-9573
 geolog@sbcglobal.net

ERNIE BURROUGHS
 President/Owner
 Registered Geologist No. 1628



RESERVOIR CHARACTERIZATION
 GEOLOGY
 PETROPHYSICS
 DATABASE MANAGEMENT
 DIGITIZING & SCANNING

EarthQuest Technical Services, LLC

David R. Walter

drwalter@eqtservices.com
 www.eqtservices.com

2201 'F' Street
 Bakersfield, CA 93301
 661•321•3136



Bob Lindblohm and Cynthia Huggins with Kristine Crossen (center), Distinguished Educator Award winner



Alaska Geological Society Members
Left to Right:
Dave Hite- 2011 PSAAPG Chair 2011 Annual Meeting
Gil Mull- 2011 PSAAPG Honorary Life Member Award winner
Greg Wilson- 2011 Distinguished Service Award winner



Bob Lindblohm and Cynthia Huggins with Tony Reid (center), PSAAPG Distinguished Service Award winner

Photos courtesy Larry Knauer



**Van Couvering Award winners,
University of Alaska, Fairbanks:**

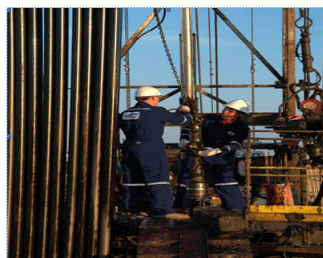
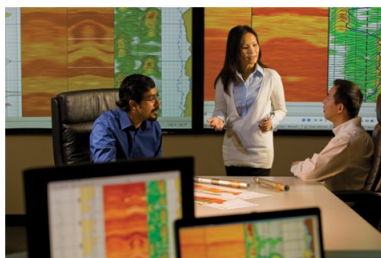
Cheryl Sanders
Raelene Wentz
Jeff Benowitz
Colby Wright
Grant Shimer
Ibrahim Iihan

Photos courtesy Larry Knauer



**Van Couvering Award winners,
University of Alaska, Anchorage:**

Courtney Gritsch
Mark Spindler
Emily Conway
Veronica Waggoner
Elizabeth Faulk
Candice McCollum



Western US/US Land/Wireline Systems

Sales: +1 661.334.3800 | Fax: +1 661.334.3808

Operations: +1 661.765.2020 | Fax: +1 661.765.2150

<http://www.bakerhughes.com> | Advancing Reservoir Performance

PUBLICATIONS OF THE AAPG PACIFIC SECTION ON DVD

AAPG Datapages and the AAPG Pacific Section announce our recent release of the digital archive, "Publications of the AAPG Pacific Section on DVD" released by the AAPG Bookstore.

This fully-searchable volume contains 132 publications of the Pacific Section published from 1947-2001. Included are special publications, field trip guidebooks, and 32 special Cross Section publications. All documents are included as Adobe Acrobat (PDF) format.

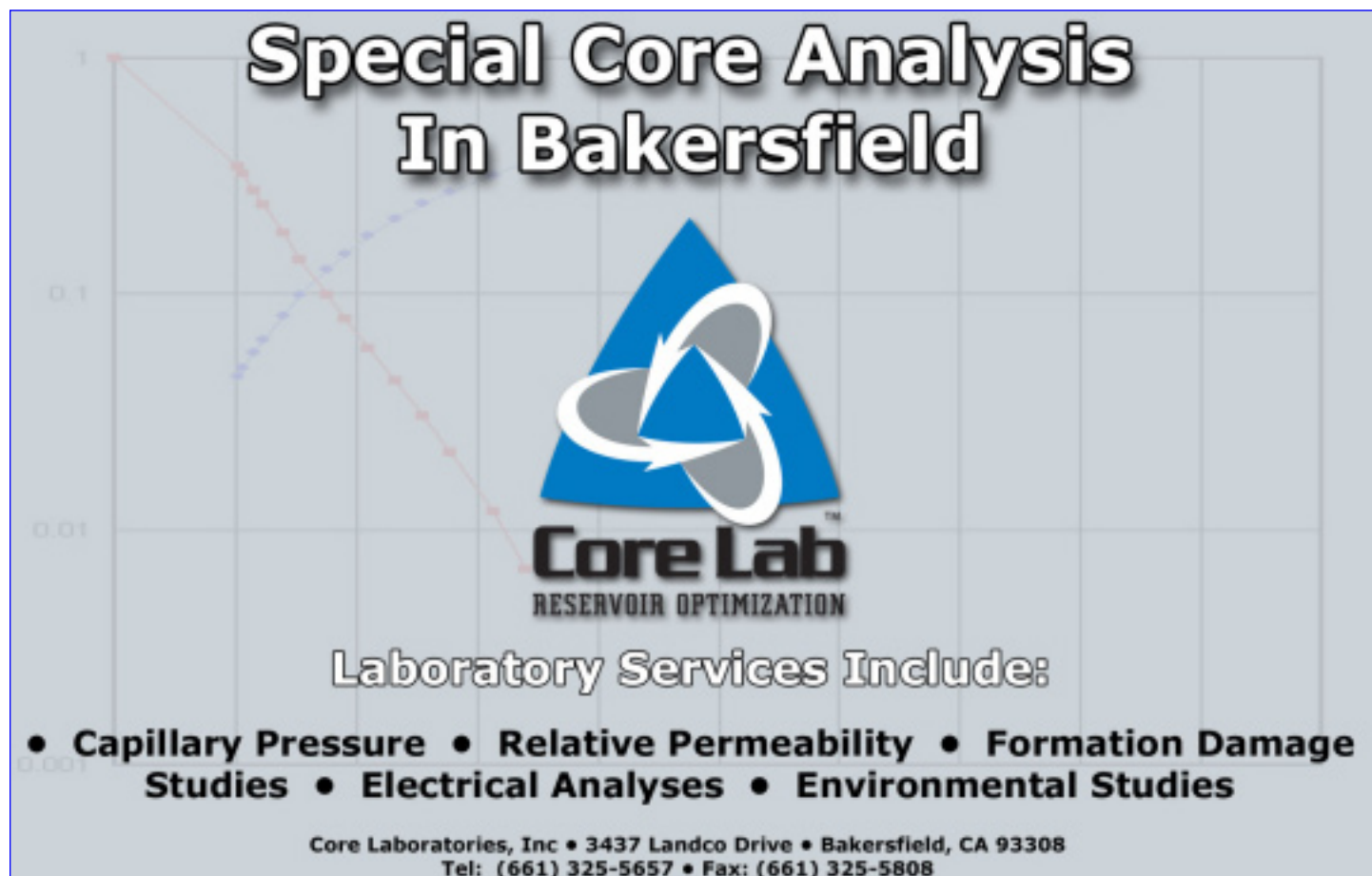
Price is \$145.00

To order send a check or CC info to:


PSAAPG Publications
P.O. Box 1072
Bakersfield, CA 93302

Or email the PSAAPG Publication Chair at
larryknauer@chevron.com

This DVD may also be order through AAPG Datapages.



Special Core Analysis In Bakersfield



Core Lab
RESERVOIR OPTIMIZATION

Laboratory Services Include:

- **Capillary Pressure** • **Relative Permeability** • **Formation Damage Studies** • **Electrical Analyses** • **Environmental Studies**

Core Laboratories, Inc • 3437 Landco Drive • Bakersfield, CA 93308
Tel: (661) 325-5657 • Fax: (661) 325-5808

Alaska Geological Society

www.alaskageology.org

P. O. Box 101288
Anchorage, AK 99510

Contact: Tom Morahan
907.230.1672



Luncheon meetings are held monthly September through May, usually on the third Thursday of the month, at the BP Energy Center (1014 Energy Court) from 11:30 a.m. to 1:00 p.m. The hot lunch cost is \$20 for members with reservations; \$22 for non-members with reservations; and \$25 without reservations. The box lunch cost is \$13 for members with reservations, \$15 for non-members with reservations, and \$18 without reservations. For reservations, call the AGS reservation voice mail at 907-258-9059 or contact David Hite at hiteconsult@acsalaska.net by noon on Monday before the meeting.

President:	Tom Morahan	907.230.1672	tmorahan@petroak.com
President-Elect:	Ken Helmold	907.269.8673	ken.helmold@alaska.gov
Vice-President:	Ken Helmold	907.269.8673	ken.helmold@alaska.gov
Secretary:	Chad Hults	907.786.7417	chults@usgs.gov
Treasurer:	Alan Hunter	907.263.7947	alhunter@chevron.com
Past-President:	Tom Homza	907.770.3701	Thomas.Homza@shell.com

Coast Geological Society

www.coastgeologicalsociety.org

P. O. Box 3055
Ventura, CA 93006

Contact: Mike Nelson
805.535.2058



Dinner meetings are held monthly September through May, usually on the third Tuesday of the month, at the Poinsettia Pavilion, 3451 Foothill Road in Ventura. Social hour starts at 6:00 p.m., dinner is served at 7:00 p.m., and the talk starts at 8:00 p.m. The cost of dinner with reservations is \$20 (members), \$25 (non-members), or \$10 (students and K-12 teachers); the talk is free. For reservations, please email Jerry Nichols (secretary@coastgeologicalsociety.org). Reservations should be made by 4:00 p.m. on the Friday before the meeting.

President:	Jon Schwalbach	805.648.8518	president@coastgeologicalsociety.org
Past President:	Mike Nelson	805.535.2058	pastpresident@coastgeologicalsociety.org
Vice President:	John Harris	805.407.7644	vicepresident@coastgeologicalsociety.org
Secretary:	Jerry Nichols	310.245.8897	secretary@coastgeologicalsociety.org
Treasurer:	Ed Magdaleno	805.535.2086	treasurer@coastgeologicalsociety.org

Los Angeles Basin Geological Society

www.labgs.org

515 So. Flower Street, Ste 4800
Los Angeles, CA 90071

Contact: Bill Long
213.225.5900 x 205



Luncheon meetings are held monthly September and October; and January through June, usually on the fourth Thursday of the month, in the Monarch Room at The Grand at Willow Street Conference Centre (4101 E. Willow Street) in Long Beach. Lunch is served at 11:30 a.m., and the talk starts at 12:15 p.m. The cost is \$20 (with reservations), \$25 (without reservations), or \$0 (students are covered by Halliburton and Schlumberger). Reservations can be made online at www.labgs.org or by contacting Marieke Gaudet at 562.624.3364 or marieke_gaudet@oxy.com. Reservations must be made prior to Tuesday before the meeting.

President:	Bill Long	213.225.5900 x205	william.long@breitburn.com
Vice President/Program Chair:	Greg Hummel	213.225.5900 x251	ghummel@energy-reserves.com
Treasurer:	Bert Vogler	562.432.1696	hvogler@kleinfelder.com
Secretary/webmaster:	Rebecca Lanners	562.624.3364	Becca_Lanners@oxy.com
Scholarship Program	Jean Kulla	949.500.3095	k2mobile@msn.com

Northern California Geological Society

www.ncgeolsoc.org

9 Bramblewood Court
Danville, CA 94506-1130

Contact: Barb Matz
Barbara.Matz@shawgrp.com



Evening meetings are held monthly September through May, usually on the last Wednesday of the month, at the Masonic Center (9 Altarinda Road) in Orinda. Social hour starts at 6:30 p.m., and the talk starts at 7:00 p.m. (no dinner). For reservations, contact Dan Day at danday94@pacbell.net before the meeting. Cost is \$5 per regular member; \$1 per student member; and \$1 per K-12 teachers.

Northwest Energy Association

www.nwenergyassociation.org

P. O. Box 6679
Portland, OR 97228-6679

Contact: Tim Blackwood
503.656.0156



Breakfast meetings are held monthly September through May, usually on the second Friday of the month, at the Multnomah Athletic Club (1849 SW. Salmon Street) in Portland. Meeting time is at 7:30 - 9:00 am. The cost is \$18. For information or reservations, contact Steve Walti.

President	Tim Blackwood	tblackwood@pacificgeotechnicalllc.com
Treasurer	Steve Walti	steven.walti@nwnatural.com

Sacramento Petroleum Association

P. O. Box 571
Sacramento, CA 95812-0571

Contact: David Hartley
530.304.4277



Luncheon meetings held monthly January through November, on the third Wednesday of the month. Location: Club Pheasant Restaurant in West Sacramento. The meetings starts at noon. The cost is \$16 - \$20. For information or reservations, contact Pam Ceccarelli.

President:	Jerry Reedy	916.486.2643	JWR5532@aol.com
Vice-President:	David Hartley	530.304.4277	drilmax1@aol.com
Secretary	Derek Jones	916.859.4710	djones@gasbiz.com
Editor/Treasurer	Pam Ceccarelli	916.439.0400	pc626@comcast.net

San Joaquin Geological Society

www.sjgs.com

P. O. Box 1056
Bakersfield, CA 93302

Contact: Tim Elam
paselam@peoplepc.com



We have dinner meetings on the second Tuesday of the month at the American Legion Hall at 2020 "H Street" in Bakersfield. There is an icebreaker at 6:00 pm, dinner at 7:00 pm, and a talk at 8:00 pm. Dinner is \$20.00 for members with reservations and \$25.00 for nonmembers, \$25.00 for members without reservations and \$30.00 for nonmembers without, and the talks are free.

President:	Tim Elam	paselam@peoplepc.com
Past President:	Jack Grippi	JGrippi@aeraenergy.com
President-Elect:	Jeff Gartland	Jeff_Gartland@oxy.com
Vice-President:	Stephano Mazzoni	Stephano_Mazzoni@oxy.com
Secretary:	Ariel Auffant	AAuffant@chevron.com
Treasurer:	Kathy Smith	kathysmith@pacseis.com

- Images (graphics, photos, and scans) must be at least 300 dpi resolution. Text should be scanned at least 600 dpi.
- Scanned photos, illustrations (line art) or logos must be scanned at 300 dpi minimum and saved as a tiff or eps.
- Avoid clip-art and images from the internet. These images are low-resolution (72 dpi).

Advertising Rates

Members	Single Issue	Year (6 issues)
Full Page	\$400.00	\$1600.00
Half Page	\$250.00	\$1050.00
Quarter Page	\$150.00	\$650.00
Business Card		\$250.00

Societies Free Advertising

Convention Societies	Unlimited Space 1/4 Page	PSAAPG Newsletter AAPG Explorer
----------------------	-----------------------------	------------------------------------

Newsletter Deadline

September & October Issue

September 1st

Early SJGS
foursome
lines up
a putt



San Joaquin Geological Society Annual Fall Classic Golf Scramble and Barbecue

Friday, September 16th, 2011

1. Golf Tournament at Sundale Golf Course

BBQ Lunch courtesy of Halliburton

2. Family BBQ and Raffle at the Kern County Museum

*BBQ Dinner by: "The Ridge Route Boys Company" courtesy of PacSeis, Inc
Onsite BBQ Featuring Tri Tip and all the Fixin's*

- Happy Hour at 5:00 PM • Dinner at 6:00 PM
- Adults \$20.00 • Students \$10.00 • Children \$5.00

Please [RSVP](#) by Tuesday, September 13th (For BBQ) – Help the Planners
(BBQ is NOT prepaid, you may pay at the event)

BBQ RSVP & Golf Questions: PacSeis, Inc. - Kathy Smith (kathysmith@pacseis.com)
Phone: (661) 322-1171

-----Cut on Line and Mail in Golf Reservation-----

Golf Tournament

Sundale Golf Course
7:30 AM – Shotgun Start

\$100.00/ Person

Includes:

Green Fee, Cart,
Breakfast, Lunch,
Drinks & Tee Prizes &
Tee Shrt w/Logos

**Reservation Deadline
September 1, 2011**

	<u>Registered Players</u>	<u>Golf \$</u>	<u>BBQ\$</u>	<u>Shirt Size</u>
Golfer 1	_____	_____	_____	<u>S M L XL XXL</u>
Golfer 2	_____	_____	_____	<u>S M L XL XXL</u>
Golfer 3	_____	_____	_____	<u>S M L XL XXL</u>
Golfer 4	_____	_____	_____	<u>S M L XL XXL</u>
Total \$		_____	_____	
Contact email:	_____		Contact Phone:	_____

Return Form and Checks to: SJGS, P.O. Box 1056, Bakersfield, CA 93302, Attn: Kathy Smith



Photo courtesy of Andreas Mulch

Investing in Energy to Support Education and Research



“Today’s computational capacity and the availability of large volumes of data from ground-based observations and satellites offer new opportunities for understanding how the Earth system works and how human activities interact with Earth processes. The Stanford Center for Computational Earth and Environmental Science will enable the development of sophisticated models to address questions about energy and freshwater resources, natural hazards, climate change, and other global issues.”

Jerry M. Harris, Founding Director, Center for Computational Earth and Environmental Science, Professor and Former Chair, Department of Geophysics, Stanford University; Director, Stanford Wave Physics Laboratory; Past Distinguished Lecturer, Society of Exploration Geophysicists, American Association of Petroleum Geologists, and Society of Petroleum Engineers.

The alumni-managed Stanford Petroleum Investments Funds own, manage, and acquire producing oil and gas royalties and other energy investments. Income from these investments provides essential discretionary funding in support of energy and environmental education and research and other programs of the Stanford School of Earth Sciences. The Petroleum Investments Funds provided seed funding to help launch the Stanford Center for Computational Earth and Environmental Science.

If you would like to sell or donate producing oil and gas royalties or learn more, visit <http://earthsci.stanford.edu/alumni/support/pif> or call or email David Gordon, Executive Administrator, Petroleum Investments Committee, Stanford School of Earth Sciences, at (650) 723-9777 or dsgordon@stanford.edu to see how you can help.



The PSAAPG Convention Committee Would Like to Thank Our 2011 Anchorage Sponsors ...



HALLIBURTON

ExxonMobil



ConocoPhillips

Alaska




Marathon

Alaska Production LLC

TIORCO

A NALCO & STEPAN COMPANY



PETROLOG

PETROLOG, INC.
JOHN T. WILLIAMS
Geologist, P.G.#5899, President

Geological Well Logging

P.O. BOX 7028
VENTURA, CA 93006
jtw@petrolog-geological.com

(805) 642-2847 • Fax (805) 980-5569 • Cell (805) 231-3793

GREGORY GEOLOGICAL SERVICES

Glenn J. Gregory

California Professional Geologist #3676

4800 Easton Drive, Suite 101
Bakersfield, CA 93309

(661) 633-5555
glenng@bak.rr.com



At Chevron, you'll join a team with the technology to take on big challenges, the integrity to do it responsibly, and the drive to keep the world moving forward. Are you up to the job?

We're Hiring Experienced Professionals

San Ramon, CA

Requisition No.	Position
032217777	Senior Seismic Acquisition and Processing Research Geophysicist
032217311	Research Scientist, Shallow Marine/Fluvial Stratigrapher
032217068	Research and Development Carbonate Geophysicist
032218294	Geophysical Application Software Development Specialist

Bakersfield, CA

Requisition No.	Position
006417859	Development Geologist

To learn more about these positions and to apply, visit www.chevron.com/careers and search by the indicated requisition number. You can also learn about other geosciences jobs in TX, LA, and PA.

**JOIN THE
CHALLENGE.**



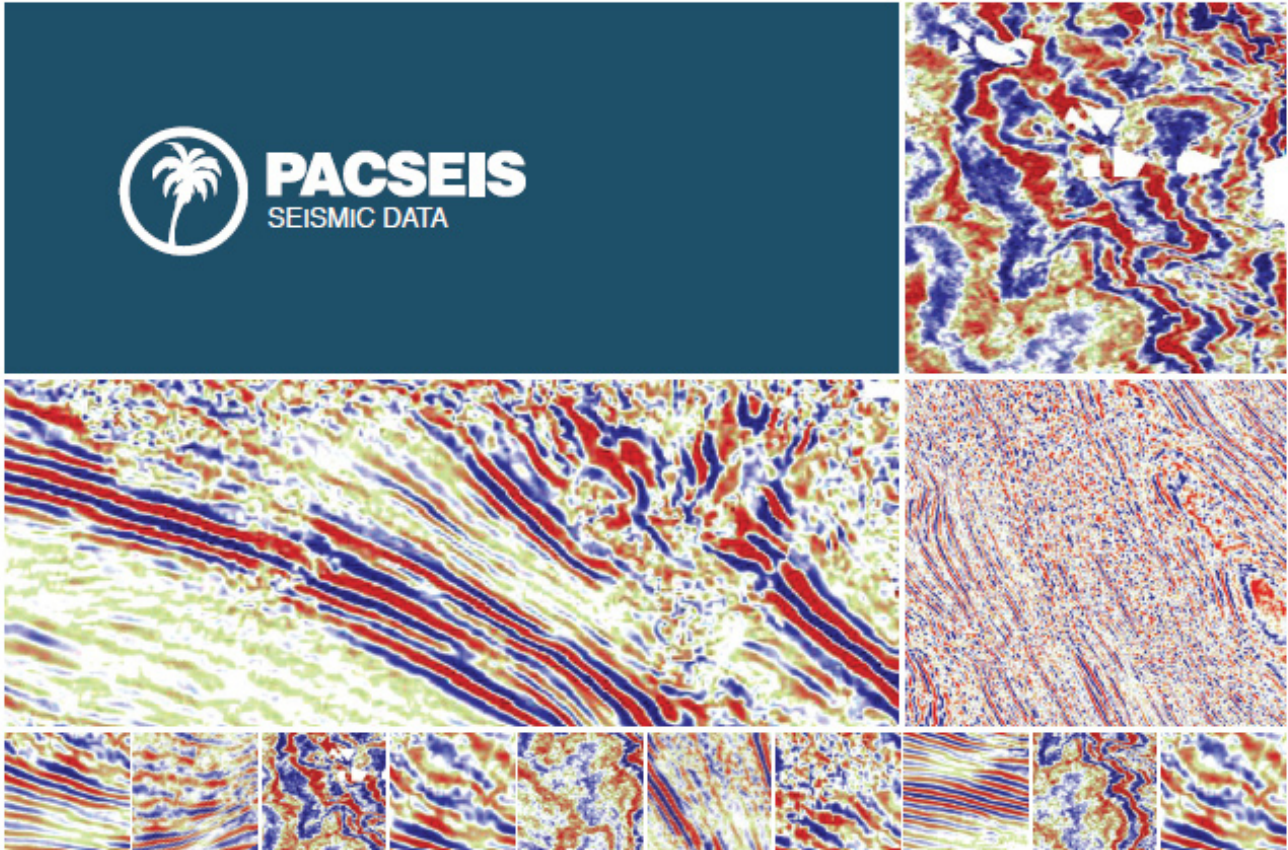
Human Energy

An equal opportunity employer that values diversity and fosters a culture of inclusion. CHEVRON, the CHEVRON logo and HUMAN ENERGY are registered trademarks of Chevron Intellectual Property LLC. © 2011 Chevron U.S.A. Inc. All rights reserved.



PACIFIC SECTION AAPG
P. O. Box 1072
BAKERSFIELD, CA 93302

PRESORTED
STANDARD
U.S. POSTAGE PAID
BAKERSFIELD, CA
PERMIT NO. 1163



PACIFIC SEISMIC COMPANY

The leader in subsurface information

RESOURCES THAT DELIVER THE DIFFERENCE

- One of the largest seismic databases available for license
- Seismic available for immediate license
Over 500,000 line miles of 2D data located in domestic United States (onshore & offshore)
- 2,500 square miles of 3D surveys

RECENTLY ACQUIRED SEISMIC DATABASES BY PACIFIC SEISMIC CO.

- Chevron USA California, OXY USA Nationwide (including Arco & Enron)
- Santa Fe energy, TXO, Cities Service Oil & Gas Nationwide
- Southern Pacific, PG&E/ NGC, SOHIO

PACIFIC SEISMIC COMPANY | Your Full-Service Seismic Brokerage & Acquisition Company

EXPLORATION CONSULTING

PROSPECT FINANCING

PROJECT DEVELOPMENT

Tel (661) 322-1171 | Fax (661) 322-1181 • www.pacseis.com | Bakersfield | Houston | Denver