



Pacific Petroleum Geology



Pacific Section • American Association of Petroleum Geologists

May & June 2011



Climate Change

Countdown to Long Beach 2012 Begins

www.psaapg.org

Get More from your Core



With reservoirs becoming increasingly complex, you need the most accurate information you can get to better understand your reservoir.

Weatherford Labs helps you get more from your core by combining an unsurpassed global team of geoscientists, engineers, technicians and researchers with the industry's most comprehensive, integrated laboratory services worldwide. From core analysis, sorption, geochemistry and isotopic composition to detailed basin modeling and comprehensive data packages, we provide you with real reservoir rock and fluid information that hasn't been distilled by a simulator or iterated by software.

We call it "The Ground Truth™" – giving you the accurate answers you need for better reservoir understanding. You'll call it a better return on your reservoir investment. To learn more, contact TheGroundTruth@weatherfordlabs.com.



2010-2011 OFFICERS

President	Cynthia Huggins 661.665.5074 president@psaapg.org
President-Elect	John Minch 805.898.9200 president-elect@psaapg.org
Vice President	Jeff Gartland 661.869.8204 secretary@psaapg.org
Secretary	Tony Reid 661.412.5467 vice-president@psaapg.org
Treasurer 2009-2011	Cheryl Blume 661.864.4722 treasurer@psaapg.org
Treasurer 2010-2012	Jana McIntyre 661.869.8231 treasurer@psaapg.org
Past President	Scott Hector 707.974.6402 past-president@psaapg.org
Editor-in-Chief 2010-2012	Ed Washburn 661.654.7182 editor@psaapg.org

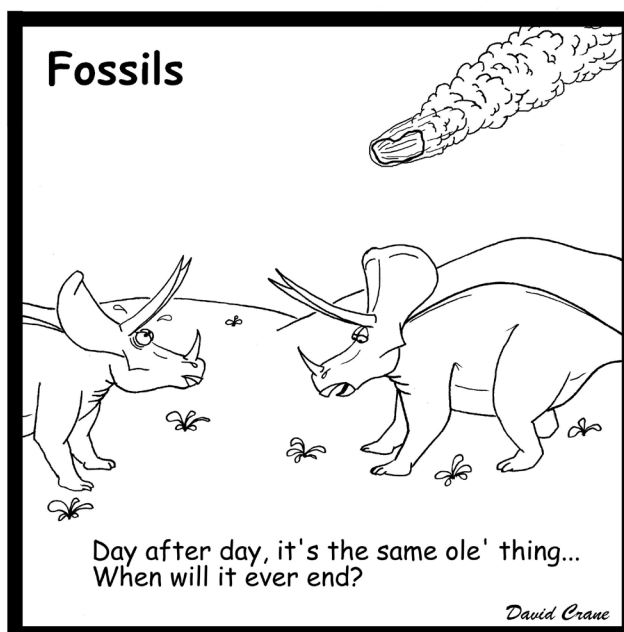
STAFF

Web Master	Bob Countryman 661.589.8580 webmaster@psaapg.org
Membership Chair	Emily Loera 661.859.9713 membership@psaapg.org
Publications Chair	Larry Knauer 661.392.2471 publications@psaapg.org LarryKnauer@chevron.com
Advisory Council Representative 2009-2012	Kurt Neher 661.412.5203 kurt_neher@oxy.com

Cover photos: Background- Denali on an autumn afternoon, courtesy Daniel Schwartz. Foreground- Long Beach convention center, courtesy Barbi Ajemian and the Long Beach Convention Bureau.

EVERY ISSUE

4	Message from the President • C. Huggins
5	Editor's Corner • E. Washburn
6	PS-AAPG News
14	Publications
17	Member Society News
THIS ISSUE	
6	2011-2012 PSAAPG Election Candidates
11	Deep LA Basin Exploration Campaign • B. Yeats and D. Verdugo
15	2011 ACE Houston Highlights



As I write this letter, I am preparing for my trip to Anchorage, to take part in the PSAAPG/PSSEPM annual meeting, in conjunction with the WRSPE. I hope to see you there!

A good deal of activity has taken place since my last letter that outlined the Anchorage meeting.

Our Imperial Barrel Award competition took place in Bakersfield in April. Teams from San Diego State University and Long Beach State University competed for the honor of representing the Pacific Section at the National Meeting in Houston. The team from San Diego State took home the trophy and represented us very well at the competition in Houston, finishing in the top five. The members of the winning team were: Erin Voyles, Brian Tillquest, Robby Gallardo, Kyle Withers, and Shane Peterson, and their instructor/mentor was Kip Hering. The members of the Long Beach State team were: Tawnya Hildabrand, Rebecca Lanners, Ziad Sedki, Graham Wilson, and Eric Arney. Their advisor was Rick Behl. They were mentored by Dave DeFelice of Oxy. In the coming years please remember these fine young scientists. I also want to thank Morgan Sullivan for all his work as Pacific Section's IBA coordinator for the past five years. He has been in contact with students and professors, passionately promoting the IBA. He has explained, numerous times, the excellent experience teams obtain through participation in this program. Finally, I want to acknowledge and thank Bonnie Bloeser, Jack Grippi, and David Miner for judging the event, as well as Chevron, Brietburn Energy, and Aera Energy for their generous sponsorship and support.

One of the items I am carrying with me to Anchorage is the award for the Teacher of the Year. Michael Warren is the winner for 2010 and will receive his award at the meeting. I am also pleased to announce that Heather Marshall of Sobrato High School in Morgan Hill, California is the winner of the 2011 Teacher of the Year Award. I'll have a lot to say about Heather in the next Newsletter.

Looking ahead to the coming months, the last of my presidential term, I would like to renew my idea of creating a significant scholarship award from PSAAPG, to be given to a student from the region that shows the most promise and most need. I will be discussing with the Executive Committee how we might proceed with this award.

Having attended the National AAPG meeting in Houston, and realizing how much work goes into planning such an event, I want to acknowledge Kay Pitts and her organization for their work in pulling together the plans for the 2012 AAPG Annual Convention and Exhibition which will take place in Long Beach. This venue has been quite popular in the past, and we are looking forward to an excellent program. Kurt Neher and Gene Fritsche are the Technical Program Co-Chairs. Many PSAAPG members are participating as Theme and Session Chairs. Please offer your assistance to Kay, Kurt, and Gene to make this a most memorable meeting.

Finally, as I pack my hiking boots for Anchorage, it occurs to me that another topic for discussion with the PSAAPG Executive Committee should be the sponsorship of an annual field trip, to be hosted by one of the local societies. This will enable broader participation on trips led by local experts. If you have any ideas about how this might work, please contact me or any member of the Executive Committee.

Cheers,
Cynthia Huggins

President, Pacific Section AAPG





PSAAPG election time is here again. I have very much enjoyed becoming more involved in our organization, and have gained much appreciation for the hard work and dedication of past and current office holders and members that allows the Pacific Section to support energy professionals in the region, earth science and energy education at all levels, and provide a link from local geological societies to the national AAPG community. We have a great set of candidates this year, representing several member societies, with a wide variety of experience and backgrounds. I wish them all good luck, and look forward to working with some of them in the next year.

The President's message listed some ideas for expanding the educational activities our organization is involved in (annual scholarship and field trip). In addition to any ideas our membership has to offer along these lines, your comments and suggestions about any of the Pacific Section's activities are welcome. Ideas on how to expand or improve the section's effectiveness are especially welcome as new members take on leadership roles.

I completely agree with Cynthia's reference to the success of the 2007 National AAPG convention in Long Beach, and very much look forward to having our section host again next year. It is also a big challenge, and the convention committee will need all the help and support it can get from the Pacific Section membership to make it yet another great geological gathering.

REAY ENTERPRISES

William G. Reay

112 Arabella Dr
Fort Davis, TX, 79734
432.426.2443

wgreay@mzstv.net

Age dating and environmental determinations of the LA Basin, the Ventura Basin, the San Joaquin and Sacramento sections, as well as the Alaskan Cook Inlet and Post Paleozoic North Slopes section

The 2011-2012 PSAAPG election is upon us. Ballots will be mailed to the membership shortly. Candidates for the PSAAPG Foundation (Trustee) and PSAAPG Executive Committee (President-Elect, Vice-President, Secretary, and Treasurer-Elect) are on the ballot, along with a proposal to adopt changes to the Pacific Section's Constitution and By-Laws.

The proposed changes to the Constitution and By-Laws have been outlined in several recent editions of the newsletter, and can be reviewed at www.psaapg.org.

The following pages offer brief biographies of each officer candidate in order to help inform your vote. In the spirit of fairness (and of saving paper and computer memory), it was attempted to keep these informational bits of similar length and detail despite the large range in years of professional experience in the region.

All of the candidates deserve our thanks for agreeing to serve the Pacific Section in a leadership role.

BOB COUNTRYMAN for PSAAPG FOUNDATION TRUSTEE (running unopposed)

Education:

1977 M.S. Geology, UCLA

1973 B.S. Geology, Cal State University, Northridge

Employment:

2009-Present Consulting Geologist, Bakersfield

1979-2009 Development Geologist, Gulf, Chevron

Pacific Section AAPG Involvement:

Trustee PSAAPG Foundation

Trustee Associate National AAPG Foundation

Web Master

Interests:

When not involved with geology or geological societies, Bob spends his time working in his gardens, traveling with his wife, reading, and watching classic movies.



	Marty Hall US Marketing / Sales Manager	7765 Windwood Way P.O. Box 549 Parker, CO 80134 USA
		P: +1(720) 851.6152 F: +1(720) 851.6153 C: +1(303) 885.8860
		geokinetics.com
		marty.hall@geokinetics.com

HILARIO CAMACHO for PRESIDENT-ELECT

Education:

2004 Ph.D. U.C. Santa Barbara
2000 M.S. Geology, CSU, Long Beach

Employment:

2010-Pres. Sr. Geological Advisor, Occidental Oil & Gas Corp.
1997-2010 Chief Geoscientist, Signal Hill Petroleum
1997-2003 Lecturer, CSU Long Beach

Pacific Section AAPG Involvement:

2010 Technical Chairman, PSAAPG Convention
2003 Co-leader for field trip
2000 Co-leader with for field trip/ short course

Interests:

I'm particularly interested in reading about the history of science and the development of scientific thought. I collect old science books, I like classical music and theater; and above all I like spending time with my family.



TONY REID for PRESIDENT-ELECT

Education:

1979 M.S. Geology, CSU, Northridge
1976 B.S. Geology, CSU, Northridge

Employment:

1985-Present Geologist, Bechtel/Occidental
1978-1985 Geologist, Getty/Texaco

Pacific Section AAPG Involvement:

2010-2011 Secretary, Pacific Section AAPG
2009-2010 Vice-President, Pacific Section AAPG
1998 President, San Joaquin Geological Society
1997 Convention Program / Announcement Editor
1993, 1997 Short course co-instructor
1990's AAPG Delegate for SJGS
1990, 1991, 1999, 2000 Field Trip co-leader
1991 Field Trip coordinator for AAPG convention

Awards:

2005 Distinguished Service Award, PSAAPG



J.M. "BUZZ" DELANO, JR.
Consultant

Cell (661) 747-0337
Office (661) 832-5229
Fax (661) 832-5229
Email: BuzzBake@aol.com

Delano Petrophysical
Consulting Services

816 Ferdinand Ct.
Bakersfield, California 93309

Dipmeter Analysis
Tape Conversion Editing
Expert Petrophysical Analysis
Wellsite Supervision

GREG HUMMEL for VICE-PRESIDENT

Education:

1980-1982 Graduate Studies, Geology, University of Colorado
1979 B.A. Geology, Univ. of Calif., Santa Barbara

Employment:

2010-Present Senior Geologist, ERG Resources
2006-2010 Senior Geologist, BreitBurn Energy
2001-2006 Geologist, Armstrong Petroleum
1997-2000 Consultant
1992-1996 Geologist, Armstrong Petroleum
1986-1991 Consultant
1982-1986 Geologist, AMOCO Petroleum

Pacific Section AAPG Involvement:

2009-2011 Vice-President, L.A. Basin Geological Society

Interests:

President and Co-Founder of the Annual Day Zero Pacific Crest Trail Kickoff; the largest hiker gathering in the western U.S., and is President of the American Long Distance Hiking Association – West. Greg walked the Pacific Crest Trail in 1977 from Mexico to Canada through California, Oregon and Washington. Greg played Division 1 basketball while at UCSB.



JERRY McNABOE for VICE-PRESIDENT

Education:

1980 M.S. Geology, San Diego State
1978 B.S. Geology, San Diego State

Employment:

1981-1988 Geologist with Getty in the San Joaquin Valley
1988-2003 Geologist with Aramco and Caltex
2003-Present Geologist, Chevron, San Joaquin Valley


Pacific Section AAPG Involvement:

Member

Interests:

My hobbies are primarily aimed at getting in shape for retirement by biking, hiking and sailing.





PETROLOG
PETROLOG, INC.
JOHN T. WILLIAMS
Geologist, P.G.#5899, President
Geological Well Logging
P.O. BOX 7028
VENTURA, CA 93006
jtw@petrolog-geological.com
(805) 642-2847 • Fax(805) 980-5569 • Cell(805) 231-3793

GREGORY GEOLOGICAL SERVICES

Glenn J. Gregory
California Professional Geologist #3676

4800 Easton Drive, Suite 101
Bakersfield, CA 93309

(661) 633-5555
glenng@bak.rr.com

BECCA LANNERS for SECRETARY

Education:

2011 M.S. Geology Candidate, CSU Long Beach
2010 B.S. Geology, CSU Long Beach

Employment:

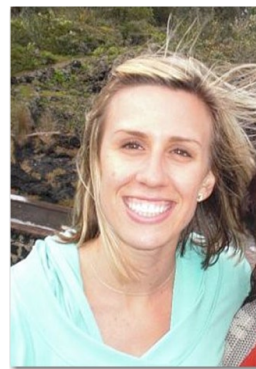
2010-Present Geoscience Specialist, Occidental Petroleum
2009 Intern, Occidental Petroleum

Pacific Section AAPG Involvement:

2010-2011 Secretary, Los Angeles Basin Geological Society

Interests:

Becca loves to travel, and will hop in car or on a plane just about anywhere. As a graduate present to herself she went to London and Paris. Most of her family is located close to home in Long beach, so much time is spent with them. Becca loves being active outdoors and baking, and going to concerts.



NELSON DORIS for SECRETARY

Education:

2011 M.S. Geology Candidate, CSU Long Beach
2007 B.S. Geology, U.C. Davis

Employment:

2008-Present DevelopmentGeologist, Warren Expl. & Prod. Inc.

Pacific Section AAPG Involvement:

2010 Field Trip Coordinator, PSAAPG Anaheim Convention
2010 Presenter, PSAAPG Anaheim Convention
2010-2011 Los Angeles Basin Geological Society member

Interests:

Nelson is currently working on an MS in Petroleum Geology at CSULB and planning his wedding, and also enjoys golf and reading.



George Harper
Account Representative
Baker Hughes



Western US/US Land/Baker Atlas

Office: +1 661.334.3800 X 215 | Fax: +1 661.334.3808

Cell: +1 661.805.5984 | george.harper@bakerhughes.com

<http://www.bakerhughes.com> | Advancing Reservoir Performance

JENNIFER ANDERSON for TREASURER-ELECT

Education:

2003 M.B.A., University of Phoenix
1999 B.S. Geology, Case Western Reserve University

Employment:

2000-Present Geological Advisor, Occidental Petroleum
1998-2000 Field Wireline Engineer, Schlumberger

Pacific Section AAPG Involvement:

2007 Co-Author, Core Workshop, Stevens Sands

Interests:

Outside of work, my interests involve any and all activities with my family (human and feline alike), as well as our participation with various community outreach events with our church family.



KATRINA HOFFMAN for TREASURER-ELECT

Education:

2008 M.S. Biogeochemistry, Indiana University
2006 B.S. Biology, Indiana University

Employment:

2008-Present Development Geologist, Chevron
1998-2008 Grant Writer, Carle Hospital, Champaign, Illinois

Pacific Section AAPG Involvement:

Member

Interests:

Traveling, hiking, running, reading and spending time with her husband, daughter and two dogs.



DHISERVICES

Formation Evaluation Specialists

www.dhiservices.com

Les Collins

Regional Operations Manager

2202 Zeus Court
Bakersfield, CA 93308
Tel: +1 (661) 588-8310
Fax: +1 (661) 588-8322
Cell: +1 (661) 742-2720
Email: lcollins@dhiservices.com

New Analysis of Deep Los Angeles Exploration Campaign Completed
Bob Yeats and Danielle Verdugo
Earth Consultants International
Santa Ana, CA 92701

In 1973-1975, American Petrofina Exploration Co. (APEC) conducted the most recent major new-field exploration program in the LA Basin, searching for production in the footwall of the northeast-dipping Puente Hills thrust and southwest-dipping Compton-Los Alamitos (CLA) thrust. One of these exploratory wells, APEC Core Hole 1 redrill, reached a measured depth of 21,215 feet (6477 m) to become the deepest well ever drilled in the LA Basin, and one of the deepest in California. The program did not find commercial hydrocarbons, and the wells were abandoned. The logs (including continuous dipmeter) were made available to the general public, with one exception: the micropaleontology reports, which are still missing. We here request that you search your well files for the APEC paleo reports, which will be invaluable in completing our project, now in its second year. All of our well data, including the paleo reports, will be curated at the California Core Repository in Bakersfield.

The report of our study for Year 1 (Yeats and Verdugo, 2011) has been submitted to the Southern California Earthquake Center (SCEC), which funded our work, and it may be downloaded from the Earth Consultants International website, http://earthconsultants.com/cms/pdf/Yeats2010_10066AnnualReport_sm.pdf.

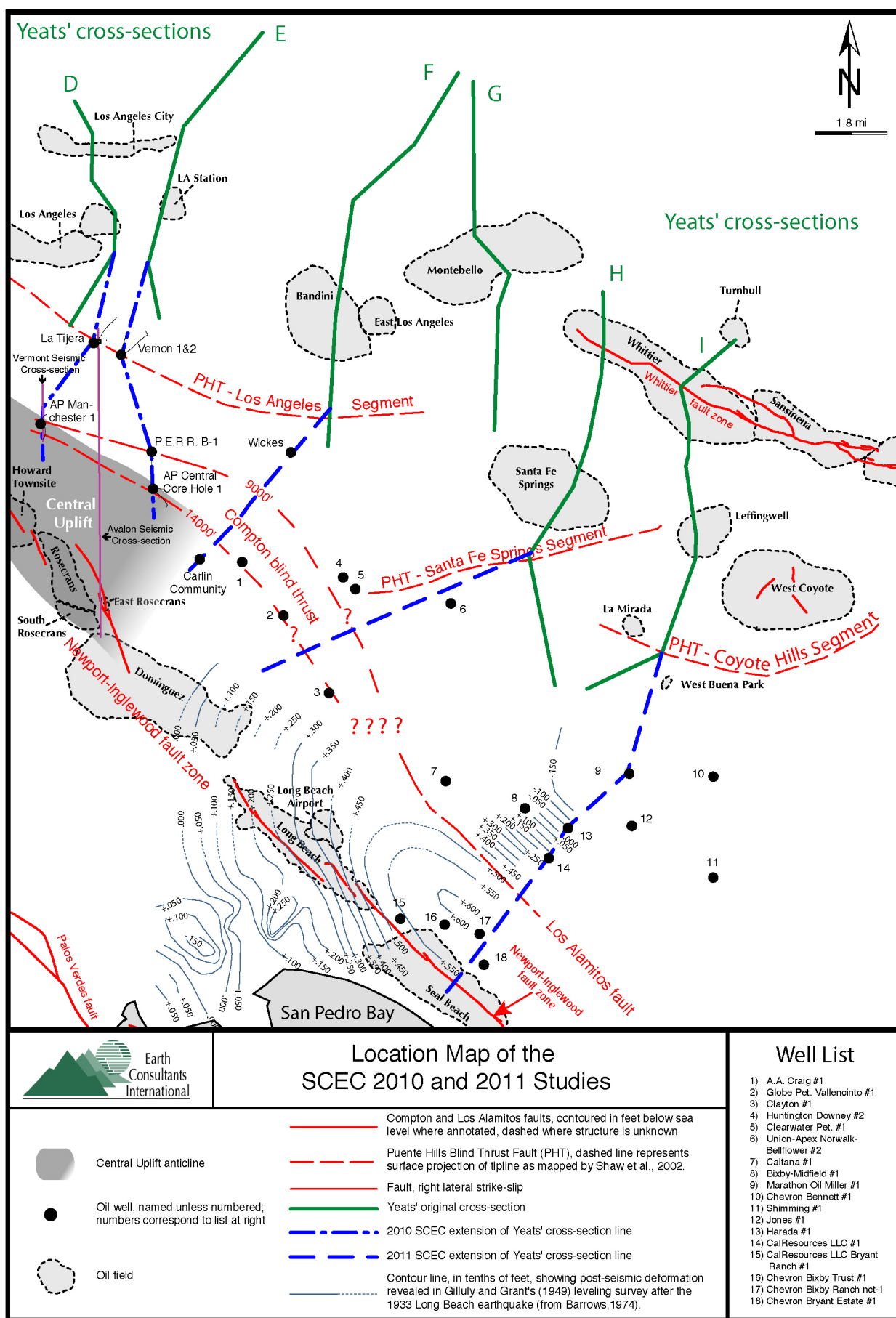
The well data were combined with 2D multichannel seismic profiles provided by John Shaw and Andreas Plesch of Harvard University. The faults were mapped on the basis of (1) changes in bedding attitude due to folding and faulting (as recorded in continuous dipmeter), and (2) repeats of stratigraphic section from well logs. Faulting continues beneath the depth imaged by seismic records, and is fairly similar to cross sections by Wright (1991, AAPG Memoir 52, his fig. 8).

Deep fault control points confirm an interpretation by Leon et al. (2009) that the CLA fault changes strike from NW to westerly between the Potrero and Inglewood oil fields, part of the Newport-Inglewood fault trend (NIF). Our current favored working hypothesis is that the CLA reverse fault is related to the Central Uplift anticline at the NIF. We have found other evidence of reverse faulting along the NIF trend, including (1) reverse fault-plane solutions reported by Hauksson (1987) in the northern NIF zone, (2) reverse faulting in oil fields from Dominguez north to Inglewood, and (3) localized coseismic uplift near the Alamitos fault east of the Long Beach oil field described by Gilluly and Grant (1949), possibly a sub-event in the 1933 Long Beach earthquake.

Our work plan for 2011 is to search for subsurface evidence for the 1933 uplift and continue our analysis of the CLA fault east of the NIF. The Léogâne (Port au Prince) earthquake of Mw 7.1, first attributed to the Enriquillo strike-slip fault, was not accompanied by surface rupture, but most aftershocks had reverse-fault-plane solutions, consistent with surface folds intersecting the Enriquillo fault at a low angle. This relation led us to a working hypothesis that the major NW-striking right-lateral faults of the LA Basin (Palos Verdes, Newport-Inglewood, and Whittier faults) are subject to strain partitioning, and the next earthquake on one of those faults might be a reverse-fault earthquake like the 1983 Coalinga earthquake, and somewhat similar to the 1989 Loma Prieta earthquake near (but not on) the San Andreas fault.

We acknowledge the assistance of our petroleum industry colleagues, especially Don Clarke, Larry Knauer, and Dalton Lockman. It is an example of how information obtained in the search for oil and gas can serve the common good, in this case, earthquake preparedness.

See figure and references on the following pages.



References

- Gilluly, J., and Grant, U.S., 1949, Subsidence in the Long Beach Harbor area, California: Geol. Soc. America Bull. 60:461-529.
- Hauksson, E., 1987, Seismotectonics of the Newport-Inglewood fault zone in the Los Angeles Basin, California: Seismol. Soc. America Bull. 77:539-561.
- Leon, L.A., Dolan, J.F., Shaw, J.H., and Pratt, T.L., 2009, Evidence for large Holocene earthquakes on the Compton thrust fault, Los Angeles, California: Jour. Geophys. Research 114:B12305, doi:10.1029/2008JB006129.
- Wright, T.L., 1991, Structural geology and tectonic evolution of the Los Angeles Basin, in Biddle, K.T., ed., Active Margin Basins: AAPG Mem. 52:35-134.
- Yeats, R.S., and Verdugo, D., 2011, Subsurface evidence for the Puente Hills and Compton-Los Alamitos faults in south-central Los Angeles: 2010 SCEC Annual Report, Project #10066: <http://www.earthconsultants.com>.
-

Stanford University Geologic Studies of the San Joaquin Basin, 1980-2010

Stephan A. Graham, W.J. and M.L. Crook Professor
School of Earth Sciences, Stanford University, Stanford, California

The dissertations reproduced on this DVD largely predate the digital era, so many have been scanned from original hard copies of variable states of preservation; as a result, the quality varies in this product. The original dissertations are on file and accessible to the public at Branner Earth Sciences Library, School of Earth Sciences, Stanford University. Scans for this DVD derive from two sources. Some were produced as part of a program at Stanford to digitize all older dissertations, with thanks to Julie Sweetkind-Singer, (Acting Head Librarian) and her staff at Branner Library, for facilitating access to previously scanned dissertations. However, the majority of the dissertations in this collection were scanned pro bono by PayZone, Inc. of Bakersfield, thanks to the considerable efforts of Deborah Olson and her colleagues. Larry Knauer, Pacific Section AAPG, encouraged and facilitated production of the DVD. Ultimately, principal credit for this compilation goes to Deborah Olson, who first suggested the idea of this DVD in order to facilitate greater public access to these dissertations, because most were previously unpublished or published in regional publications of limited circulation. This body of research would not have been possible without the support of the San Joaquin Project consortium member companies, which over time included: Amerada-Hess, Amoco, Arco, BP Alaska, Champlin, Chevron, Cities, Conoco, Exxon, Getty, Gulf, Husky, Marathon, Mobil, Natural Gas Corp, Occidental, Phillips, Santa Fe Energy, Shell, Sohio, Superior, Tenneco, Texaco, and Unocal.

A 2-DVD set containing the information described above may be purchased from the Pacific Section American Association of Petroleum Geologists (PSAAPG) Publications Committee for \$50.00 by contacting (and including a check or credit card information and a shipping address)

PSAAPG Publications
P.O. Box 1072
Bakersfield, CA 93302

or

Larry Knauer (Publications Chair)
larryknauer@chevron.com
661-392-2471

DIBBLEE CENTER HAS COMPLETED THE DIGITIZING OF 96% OF TOM DIBBLEE'S MAPS
404 of the 419 maps have been digitized.
Only 15 of the maps remain to be digitized
We need help to finish the project

The AAPG is featuring Tom's maps in digital format in the Datapages section on their website for downloading as georeferenced, layered PDF files by end user. The Dibblee Geologic Map Collection is available to end users on a global level. Paper maps are still available.

Jason and I have been vigorously soliciting funds to digitize the original 76 maps of the Dibblee Collection that were prepared by hand. We need less than \$75,000 of additional funding to accomplish our goal. I am asking you to consider helping us to obtain funding for all or part of our mission. Help us to finish this project.

To aid our funding quest, blocks of the Adobe Illustrator Dataset as CS4 .ai files can still be purchased. Data in this set is in an unrestricted, layered format to allow the user to examine and manipulate the data, and to help incorporate it into their data set.

The AAPG Foundation has the E.F. Reid Dibblee Fund, created by Bud Reid, to support the work of the Thomas W. Dibblee Jr. Center for Geology of the Santa Barbara Museum of Natural History. Contributions can be made through this fund, or directly to the Dibblee Map Digitizing Fund, Dibblee Geological Center, Santa Barbara Museum of Natural History.

John Minch, Editor, Thomas Dibblee Jr. Geological Center
 Santa Barbara Museum of Natural History, 2559 Puesta del Sol, Santa Barbara, CA 93105
 805-569-1800
 <jmainc@earthlink.net>



GEOLOGICAL LOGGING INC.
 9229 Beatty Drive, Suite B
 Sacramento, CA 95826
 Telephone 916-452-9570
 Cell 952-8975 Fax 452-9573
 geolog@sbcglobal.net

ERNIE BURROUGHS
 President/Owner
 Registered Geologist No. 1628



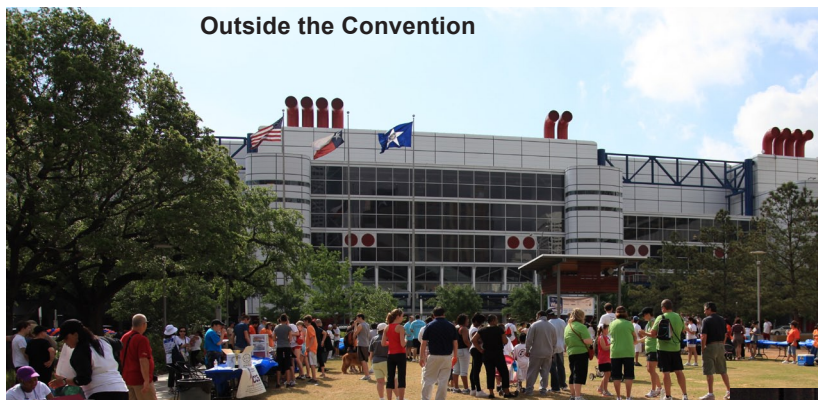
RESERVOIR CHARACTERIZATION
 GEOLOGY
 PETROPHYSICS
 DATABASE MANAGEMENT
 DIGITIZING & SCANNING

EarthQuest Technical Services, LLC

David R. Walter

drwalter@eqtservices.com
 www.eqtservices.com

2201 'F' Street
 Bakersfield, CA 93301
 661-321-3136



Outside the Convention



Brian Pitts and Chris Houston



Don and Cynthia Clarke with Scott Carpenter



PS-AAPG Imperial Barrel Award winning team, SDSU. The team earned honorable mention at the convention.



President's Reception Entertainment



Larry Knauer and Steven Veal



Kay Pitts with John Dribus and IBA hardware



The Convention floor

Photos courtesy Brian Pitts

PUBLICATIONS OF THE AAPG PACIFIC SECTION ON DVD

AAPG Datapages and the AAPG Pacific Section announce our recent release of the digital archive, "Publications of the AAPG Pacific Section on DVD" released by the AAPG Bookstore.

This fully-searchable volume contains 132 publications of the Pacific Section published from 1947-2001. Included are special publications, field trip guidebooks, and 32 special Cross Section publications. All documents are included as Adobe Acrobat (PDF) format.

Price is \$145.00

To order send a check or CC info to:

PSAAPG Publications
P.O. Box 1072
Bakersfield, CA 93302

Or email the PSAAPG Publication Chair at
larryknauer@chevron.com

This DVD may also be order through AAPG Datapages.

Special Core Analysis In Bakersfield



Core Lab
RESERVOIR OPTIMIZATION

Laboratory Services Include:

- Capillary Pressure • Relative Permeability • Formation Damage Studies • Electrical Analyses • Environmental Studies

Core Laboratories, Inc • 3437 Landco Drive • Bakersfield, CA 93308
Tel: (661) 325-5657 • Fax: (661) 325-5808

Alaska Geological Society

www.alaskageology.org

P. O. Box 101288
Anchorage, AK 99510

Contact: Tom Morahan
907.230.1672



Luncheon meetings are held monthly September through May, usually on the third Thursday of the month, at the BP Energy Center (1014 Energy Court) from 11:30 a.m. to 1:00 p.m. The hot lunch cost is \$20 for members with reservations; \$22 for non-members with reservations; and \$25 without reservations. The box lunch cost is \$13 for members with reservations, \$15 for non-members with reservations, and \$18 without reservations. For reservations, call the AGS reservation voice mail at 907-258-9059 or contact David Hite at hiteconsult@acsalaska.net by noon on Monday before the meeting.

President:	Tom Morahan	907.230.1672	tmorahan@petroak.com
President-Elect:	Ken Helmold	907.269.8673	ken.helmold@alaska.gov
Vice-President:	Ken Helmold	907.269.8673	ken.helmold@alaska.gov
Secretary:	Chad Hults	907.786.7417	chults@usgs.gov
Treasurer:	Alan Hunter	907.263.7947	alhunter@chevron.com
Past-President:	Tom Homza	907.770.3701	Thomas.Homza@shell.com

Coast Geological Society

www.coastgeologicalsociety.org

P. O. Box 3055
Ventura, CA 93006

Contact: Mike Nelson
805.535.2058



Dinner meetings are held monthly September through May, usually on the third Tuesday of the month, at the Poinsettia Pavilion, 3451 Foothill Road in Ventura. Social hour starts at 6:00 p.m., dinner is served at 7:00 p.m., and the talk starts at 8:00 p.m. The cost of dinner with reservations is \$20 (members), \$25 (non-members), or \$10 (students and K-12 teachers); the talk is free. For reservations, please email Jerry Nichols (secretary@coastgeologicalsociety.org). Reservations should be made by 4:00 p.m. on the Friday before the meeting.

President:	Jon Schwalbach	805.648.8518	president@coastgeologicalsociety.org
Past President:	Mike Nelson	805.535.2058	pastpresident@coastgeologicalsociety.org
Vice President:	John Harris	805.407.7644	vicepresident@coastgeologicalsociety.org
Secretary:	Jerry Nichols	310.245.8897	secretary@coastgeologicalsociety.org
Treasurer:	Ed Magdaleno	805.535.2086	treasurer@coastgeologicalsociety.org

Los Angeles Basin Geological Society

www.labgs.org

515 So. Flower Street, Ste 4800
Los Angeles, CA 90071

Contact: Bill Long
213.225.5900 x 205



Luncheon meetings are held monthly September and October; and January through June, usually on the fourth Thursday of the month, in the Monarch Room at The Grand at Willow Street Conference Centre (4101 E. Willow Street) in Long Beach. Lunch is served at 11:30 a.m., and the talk starts at 12:15 p.m. The cost is \$20 (with reservations), \$25 (without reservations), or \$0 (students are covered by Halliburton and Schlumberger). Reservations can be made online at www.labgs.org or by contacting Marieke Gaudet at 562.624.3364 or marieke_gaudet@oxy.com. Reservations must be made prior to Tuesday before the meeting.

President:	Bill Long	213.225.5900 x205	william.long@breitburn.com
Vice President/Program Chair:	Greg Hummel	213.225.5900 x251	ghummel@energy-reserves.com
Treasurer:	Bert Vogler	562.432.1696	hvogler@kleinfelder.com
Secretary/webmaster:	Rebecca Lanners	562.624.3364	Becca_Lanners@oxy.com
Scholarship Program	Jean Kulla	949.500.3095	k2mobile@msn.com

Northern California Geological Society

www.ncgeolsoc.org

9 Bramblewood Court
Danville, CA 94506-1130

Contact: Barb Matz
Barbara.Matz@shawgrp.com



Evening meetings are held monthly September through May, usually on the last Wednesday of the month, at the Masonic Center (9 Altarinda Road) in Orinda. Social hour starts at 6:30 p.m., and the talk starts at 7:00 p.m. (no dinner). For reservations, contact Dan Day at danday94@pacbell.net before the meeting. Cost is \$5 per regular member; \$1 per student member; and \$1 per K-12 teachers.

Northwest Energy Association

www.nwenergyassociation.org

P. O. Box 6679
Portland, OR 97228-6679

Contact: Tim Blackwood
503.656.0156



Breakfast meetings are held monthly September through May, usually on the second Friday of the month, at the Multnomah Athletic Club (1849 SW. Salmon Street) in Portland. Meeting time is at 7:30 - 9:00 am. The cost is \$18. For information or reservations, contact Steve Walti.

President	Tim Blackwood	tblackwood@pacificgeotechnicalllc.com
Treasurer	Steve Walti	steven.walti@nwnatural.com

Sacramento Petroleum Association

P. O. Box 571
Sacramento, CA 95812-0571

Contact: David Hartley
530.304.4277



Luncheon meetings held monthly January through November, on the third Wednesday of the month. Location: Club Pheasant Restaurant in West Sacramento. The meetings starts at noon. The cost is \$16 - \$20. For information or reservations, contact Pam Ceccarelli.

President:	Jerry Reedy	916.486.2643	JWR5532@aol.com
Vice-President:	David Hartley	530.304.4277	drilmax1@aol.com
Secretary	TBD		
Editor/Treasurer	Pam Ceccarelli		

San Joaquin Geological Society

www.sjgs.com

P. O. Box 1056
Bakersfield, CA 93302

Contact: Kurt Johnson
kurt_johnson@oxy.com



We have dinner meetings on the second Tuesday of the month at the American Legion Hall at 2020 "H Street" in Bakersfield. There is an icebreaker at 6:00 pm, dinner at 7:00 pm, and a talk at 8:00 pm. Dinner is \$20.00 for members with reservations and \$25.00 for nonmembers, \$25.00 for members without reservations and \$30.00 for nonmembers without, and the talks are free.

President:	Jack Grippi	JGrippi@aeraenergy.com
Past President:	Kurt Johnson	kurt_johnson@oxy.com
President-Elect:	Tim Elam	paselam@peoplepc.com
Vice-President:	Stephano Mazzoni	Stephano_Mazzoni@oxy.com
Secretary:	Mike Minner	MMinner@chevron.com
Treasurer:	Linji An	LAn@aeraenergy.com

- Images (graphics, photos, and scans) must be at least 300 dpi resolution. Text should be scanned at least 600 dpi.
- Scanned photos, illustrations (line art) or logos must be scanned at 300 dpi minimum and saved as a tiff or eps.
- Avoid clip-art and images from the internet. These images are low-resolution (72 dpi).

Advertising Rates

Members	Single Issue	Year (6 issues)
Full Page	\$400.00	\$1600.00
Half Page	\$250.00	\$1050.00
Quarter Page	\$150.00	\$650.00
Business Card		\$250.00

Societies Free Advertising

Convention Societies	Unlimited Space 1/4 Page	PSAAPG Newsletter AAPG Explorer
----------------------	-----------------------------	------------------------------------

Newsletter Deadline

July & August Issue

July 1st



Photo courtesy of Andreas Mulch

Investing in Energy to Support Education and Research



“Today’s computational capacity and the availability of large volumes of data from ground-based observations and satellites offer new opportunities for understanding how the Earth system works and how human activities interact with Earth processes. The Stanford Center for Computational Earth and Environmental Science will enable the development of sophisticated models to address questions about energy and freshwater resources, natural hazards, climate change, and other global issues.”

Jerry M. Harris, Founding Director, Center for Computational Earth and Environmental Science, Professor and Former Chair, Department of Geophysics, Stanford University; Director, Stanford Wave Physics Laboratory; Past Distinguished Lecturer, Society of Exploration Geophysicists, American Association of Petroleum Geologists, and Society of Petroleum Engineers.

The alumni-managed Stanford Petroleum Investments Funds own, manage, and acquire producing oil and gas royalties and other energy investments. Income from these investments provides essential discretionary funding in support of energy and environmental education and research and other programs of the Stanford School of Earth Sciences. The Petroleum Investments Funds provided seed funding to help launch the Stanford Center for Computational Earth and Environmental Science.

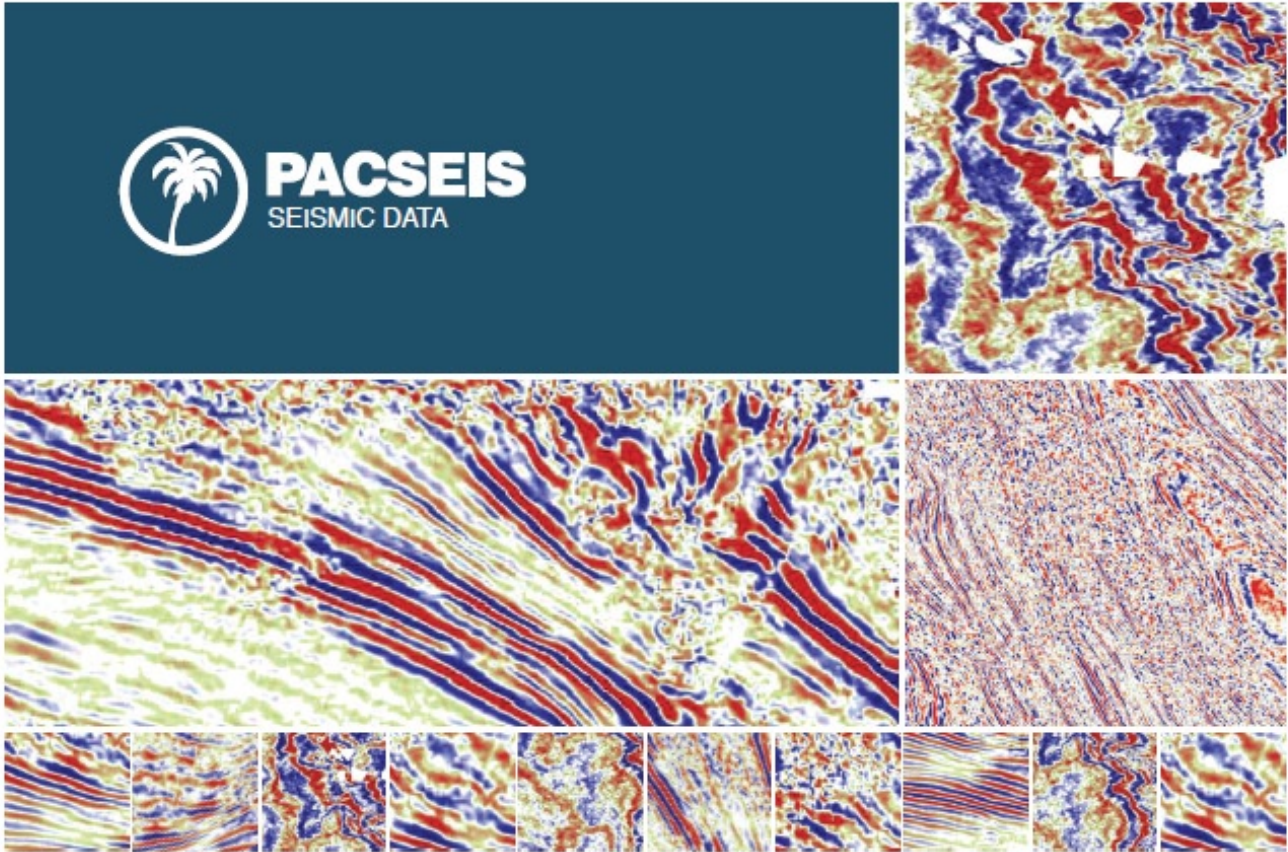
If you would like to sell or donate producing oil and gas royalties or learn more, visit <http://earthsci.stanford.edu/alumni/support/pif> or call or email David Gordon, Executive Administrator, Petroleum Investments Committee, Stanford School of Earth Sciences, at (650) 723-9777 or dsgordon@stanford.edu to see how you can help.





PACIFIC SECTION AAPG
P. O. Box 1072
BAKERSFIELD, CA 93302

PRESORTED
STANDARD
U.S. POSTAGE PAID
BAKERSFIELD, CA
PERMIT NO. 1163



PACIFIC SEISMIC COMPANY

The leader in subsurface information

RESOURCES THAT DELIVER THE DIFFERENCE

- One of the largest seismic databases available for license
- Seismic available for immediate license
Over 500,000 line miles of 2D data located in domestic United States (onshore & offshore)
- 2,500 square miles of 3D surveys

RECENTLY ACQUIRED SEISMIC DATABASES BY PACIFIC SEISMIC CO.

- Chevron USA California, OXY USA Nationwide (including Arco & Enron)
- Santa Fe energy, TXO, Cities Service Oil & Gas Nationwide
- Southern Pacific, PG&E/ NGC, SOHIO

PACIFIC SEISMIC COMPANY | Your Full-Service Seismic Brokerage & Acquisition Company

EXPLORATION CONSULTING

PROSPECT FINANCING

PROJECT DEVELOPMENT

Tel (661) 322-1171 | Fax (661) 322-1181 • www.pacseis.com | Bakersfield | Houston | Denver