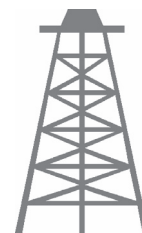




Pacific Petroleum Geology



NEWSLETTER

Pacific Section • American Association of Petroleum Geologists

July & August • 2010



Summer Rocks

SYNERGY ENERGY



Weatherford
LABORATORIES

Your success increasingly depends upon a better understanding of your reservoir. At Weatherford Laboratories, we provide a single source for comprehensive laboratory analysis, creating a synergy previously unknown in laboratory services. This single source includes distinguished geologists, geochemists, analysts, engineers, technicians and software developers, 25 worldwide laboratories, and the broadest portfolio of services for acquiring and interpreting data from physical samples. The end result is an unsurpassed combination of intellectual capital and technical resources — all working together to help you enhance development planning and reduce reservoir uncertainty.

Put our union of Synergy and Energy to work for you.

Weatherfordlabs.com

HIGHER STANDARDS

NORTH AMERICA
NAinfo@us.weatherfordlabs.com

EUROPE
EUinfo@eu.weatherfordlabs.com

LATIN AMERICA
LAinfo@latam.weatherfordlabs.com

MIDDLE EAST/NORTH AFRICA
MEinfo@me.weatherfordlabs.com

ASIA PACIFIC
APinfo@asia.weatherfordlabs.com

2010-2011 OFFICERS

President	Cynthia Huggins 661.665.5074 president@psaapg.org
President-Elect	John Minch 805.898.9200 president-elect@psaapg.org
Vice President	Jeff Gartland 661.869.8204 secretary@psaapg.org
Secretary	Tony Reid 661.412.5467 vice-president@psaapg.org
Treasurer 2009-2011	Cheryl Blume 661.864.4722 treasurer@psaapg.org
Treasurer 2010-2012	Jana McIntyre 661.869.8231 treasurer@psaapg.org
Past President	Scott Hector 707.974.6402 past-president@psaapg.org
Editor-in-Chief	Ed Washburn 661.654.7182 editor@psaapg.org

STAFF

Web Master	Bob Countryman 661.589.8580 webmaster@psaapg.org
------------	--

MEMBERSHIP

Membership Chair	Brian Church 661.654.7863 membership@psaapg.org
------------------	---

PUBLICATIONS

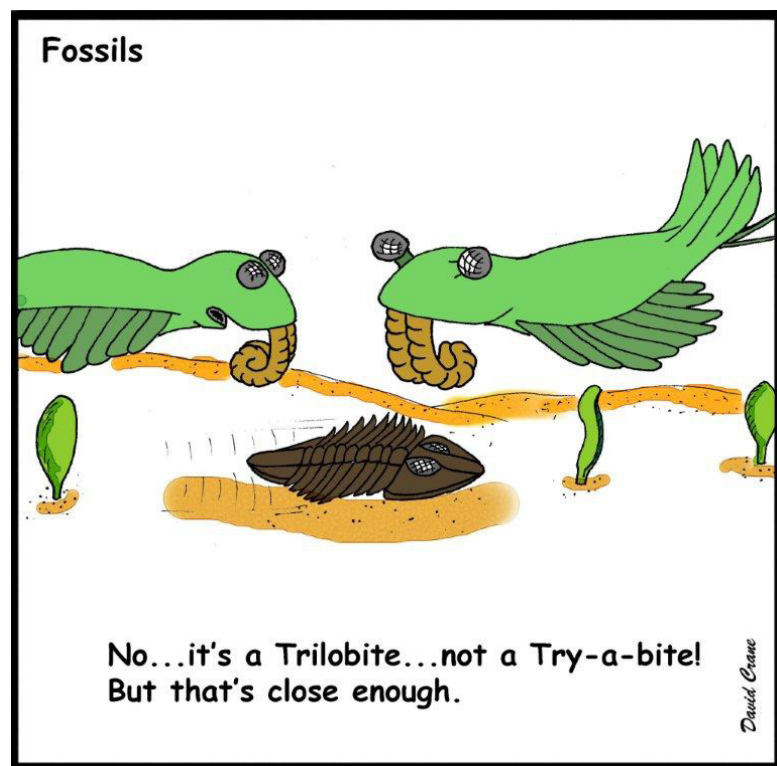
Publications Chair	Larry Knauer 661.392.2471 publications@psaapg.org LarryKnauer@chevron.com
--------------------	--

EVERY ISSUE

- 4 Message from the President • C. Huggins
- 5 Editor's Corner • E. Washburn
- 6 PS-AAPG News
- 8 Farewell to Friends
- 15 Member Society News

THIS ISSUE

- 6 PS-AAPG Certificate of Merit Award Recipients
- 7 AAPG Division of Environmental Geosciences • J. McNaboe
- 13 Shopping Rocks • S. Hector



MESSAGE FROM THE PRESIDENT

CYNTHIA HUGGINS

Ah yes, geology. Never in any epoch did I see myself as being president of Pacific Section AAPG, but here I / we are ..

I started on my journey as a kid, playing and collecting “pretty” rocks in some great places: Yosemite, Sequoia, Death Valley, Red Rock Canyon, Tahoe, Lava Falls, Devil's Postpile, and the rest of California. My mother had a minor in Geology and a major in Art, so she would take us to beautiful rugged places she wanted to draw, and at the same time gave us an appreciation for all things in nature; rocks to trees. There was an interesting, then-fresh, roadcut of Monterey Formation on Hwy 166 near Santa Maria, that got me to my first formal geological encounter. I wondered aloud, “How did those rocks get almost vertical and why are they so banded?” My friend asked, “Why not take a geology class and find out?” So I did. I took a Physical Geology course at Cuesta Junior College and never looked back. I moved to Bakersfield and finished my geology degree at Cal State University, Bakersfield. I was an intern at Getty, where I met some great Petroleum Geologists. They all said, “You need to go to this dinner meeting in the old American Legion Hall, drink free beer, eat t-bone steaks off metal camp trays, meet geologists from other companies, and listen to someone give a geology talk.” How could I resist?? For 25 years, I've been going to meetings, listening to talks, and eating off the camp trays (occasionally having half a chicken instead of the massive t-bone). Around me are contractors, independent oil producers, oil company geologists, university professors, students, and an amazing group of retirees. I've learned a lot about geology and about our industry at the Bakersfield American Legion Hall.

It took awhile before I realized that the SJGS dinner group had anything to do with the larger PSAAPG or the AAPG. I also did not realize that the PSAAPG is made up of affiliated societies: Coast, Los Angeles Basin, Alaska, Northern California, Sacramento, Northwest Energy, and the San Joaquin.

So, after many years of participation, and discussion, I feel there are a few things that could use some attention. I think confusion still exists about how our local societies fit in with the greater national (and international) organization of AAPG. I ran for President because I wanted to give back to a group of people who have been very active in our organization over the years, and that have given me so much in the past. For the coming year, I will focus my efforts to encourage the new geologists in our respective areas to go to their local meetings, meet other geologists and become part of the larger organization. I am passionate about getting new geologists involved, and I am concerned that the majority of our experienced petroleum geologists are not going to be available to mentor the next wave of petroleum geologists. In addition, I want us to spark interest in geology in the K-12 age group, and to encourage more participation from the region's Universities in the Imperial Barrel Award competition. Lastly, we need to better manage and be more proactive in our interactions with the community, and tell them about what we do as an industry. The recent blowout in the Gulf of Mexico made it quite obvious that the population in general knows nearly nothing about what we do, and views us with suspicion.

I look forward to discussing these and many other topics as the year progresses, and to working with a talented and committed group of PSAAPG officers, with all the local society leaders, and the wide range of committees! We are looking forward to working with the Alaska Geological Society as they prepare for our convention in Anchorage in 2011, and working with Kay Pitts and her committee as they prepare for the national convention in Long Beach in 2012.

Thank you.
Cheers,
Cynthia Huggins
2010- 2011 PSAAPG President

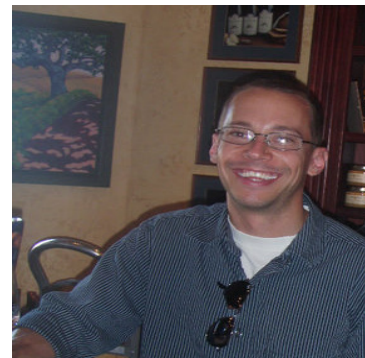


The new members of the PS-AAPG executive committee are:

John Minch (President-Elect)

Jana McIntyre (Treasurer-Elect)

Ed Washburn (Editor-in-Chief)



Cynthia Huggins (President), Scott Hector (Past President), Jeff Gartland (Vice President), Tony Reid (Secretary), and Cheryl Blume (Treasurer) continue to serve in their new roles, and retiring (for now) from the committee are Don Clarke (Past President) and Karen Blake (Editor-in-Chief). Thank you Don and Karen for the many years of hard work and dedication you've given the Pacific section.

Seeing video of clear water surrounding the capped Macondo well was a welcome sight following three months of murky views of oil leaking into the gulf. A thank-you is due to all those who have worked tirelessly (and still are) to stop the flow, contain, disperse, or skim oil on the water, clean it from the beaches, and aid the people and wildlife affected in the gulf region. It has been a challenging summer for our industry. At the beginning of 2010, the question was "where and how much offshore area will be opened up for exploration?" In the second half of the year, the focus is around how many jobs will be lost (and for how long) due to government concerns, and how this will affect deepwater exploration and development going forward. Speculation on causes and long-term consequences of the disaster by the media, government, and industry has been rampant since the beginning, and there is no need to add to it here. Whatever the findings of the incident investigation, I hope it results in safer drilling operations throughout our industry.

On to a lighter topic, the recent discussion in the CA state legislature about removing serpentine as the official state rock. If you are unaware of the bill sponsored by State Senator Gloria Romero of Los Angeles, and the reasoning behind it, I refer you to the July 13 *NYTimes.com* article "California May Drop Its Official State Rock" by Jennifer Steinhauer. The bill's argument goes something like this: California is a health conscious state, and having a state rock that contains asbestos minerals, which are linked to cancer, is insensitive to those impacted by asbestos-related illnesses. The counter argument goes that the particular type of asbestos mineral (chrysotile) found in some serpentine rocks is not the most hazardous from a cancer causing standpoint, and that removing it will demonize the rock and leave museums open to lawsuits for having it on display. Gov. Schwarzenegger has not indicated a position on the issue, and I am definitely with him on this. That's not to say I don't have an opinion on whether we should have an official state rock (I think we should), or what it should be (I have my favorite, but am more interested in what you think, so let me know at editor@psaapg.org), but one thing I think California needs less than an asbestos-associated official state rock is the state legislature spending time debating this issue. I think it's a great topic for a newsletter, so let's hear your thoughts.



DHISERVICES

Formation Evaluation Specialists

www.dhiservices.com

Les Collins

Regional Operations Manager

2202 Zeus Court
Bakersfield, CA 93308
Tel: +1 (661) 588-8310
Fax: +1 (661) 588-8322
Cell: +1 (661) 742-2720
Email: lcollins@dhiservices.com

Morgan Stanley

The Hopps Group

Lydia Hopps

Vice President
Financial Advisor
300 Esplanade Drive
Oxnard, CA 93036
805-278-3609

Retirement planning
College savings plans
Asset allocation strategies
Comprehensive financial planning

Investments and services are offered through Morgan Stanley & Co. Incorporated, member SIPC ©2007 Morgan Stanley NY CS 5449429 ANN-05 04/07 SBD

SEVEN PSAAPG MEMBERS RECEIVE CERTIFICATE OF MERIT

As the President of the Pacific Section AAPG for 2009-2010, Scott T. Hector followed in the example set by previous president Don Clarke, and awarded Certificates of Merit to seven members of the section who contributed to the organization. Those receiving the award are as follows:

- **Jonathan P. Allen**, Chevron, Bakersfield, for his work with the Young Professionals
- **Bob Ballog**, Eagle Exploration, Newbury Park, for his work with the Teacher of the Year Award
- **Curtis Henderson**, City of Long Beach, Long Beach, for his work as Co-Chair of the 2010 PSAAPG Convention in Anaheim
- **Cynthia Huggins**, AERA Energy, Bakersfield, for her work with the Imperial Barrel Award
- **Jonathan Kuespert**, Breitburn Energy, Los Angeles, for his work with the Imperial Barrel Award
- **Dr. Kathleen Marsaglia**, Cal State University Northridge, for her work with the new Student Chapter there and for founding the AAPG-SEG West Coast Student Expo, now in its third year, and being held on the Northridge campus September 30th-October 2nd this year

- **Dr. Morgan Sullivan**, Chevron, Houston, for his work with the Imperial Barrel Award

My congratulations to all of these individuals for their contribution to the Section!

Sincerely,
Scott T. Hector

**Special Core Analysis
In Bakersfield**

Core Lab
RESERVOIR OPTIMIZATION

Laboratory Services Include:

- **Capillary Pressure** • **Relative Permeability** • **Formation Damage Studies** • **Electrical Analyses** • **Environmental Studies**

Core Laboratories, Inc • 3437 Landco Drive • Bakersfield, CA 93308
Tel: (661) 325-5657 • Fax: (661) 325-5808

As active members of AAPG, I encourage all of you to join the Division of Environmental Geosciences. "The Division of Environmental Geosciences (DEG), a division of AAPG, is concerned with increasing awareness of the environment and the petroleum industry and providing AAPG with a scientific voice in the public arena. Among its objectives are educating members about important environmental issues, supporting and encouraging research on the effects of exploration and production on the environment, and communicating scientific information to concerned governmental agencies" (AAPG Explorer, June 2009).

"I challenge every AAPG member to become an active DEG member. By doing so, you will not only help us educate the public regarding energy and environmental matters, but you will also benefit by being kept abreast of the latest research, which offers value to both the petroleum industry and the environmental community at large. Please consider joining DEG to promote these important messages involving the environmentally safe development of our natural resources. Remember, good science makes for a healthy earth" (Mary Harris, DEG President 2010-2011).

As DEG's local representative, I second Mary Harris' call for AAPG members to join the Division of Environmental Geosciences. Environmental geoscientists are involved in all aspects of the oil and gas industry and are on the front line with the government agencies who write and implement regulation and policy. Environmental work is an important sector of the oil and gas industry that petroleum geoscientists often take for granted. What everyone needs to realize is that without our efforts many projects would not be implemented.


Some examples are:

- Environmental Geoscientists help to safely dispose of the 'waste' generated by normal oil field activities by permitting or closing produced water and drilling sumps, and permitting and designing produced water injection wells.
- Environmental Geoscientists work with exploration geologists to delineate shallow drilling hazards, and with geologists, engineers, biologists, archeologists, and government agencies to permit exploration wells and seismic surveys.
- Environmental Geoscientists work with other professionals and government agencies to clean up brine, oil and refined products that have accidentally impacted groundwater, sediments, or biological receptors.

DEG plans to offer special editions in upcoming issues of the division's publication, Environmental Geosciences, to include hydraulic fracturing, produced water, enhanced oil recovery, and the environmental impacts of oil spills, all topics that are important to each of us in our industry. Further, DEG is partnering with the Geological Society of London to arrange a series of semi-annual conferences on carbon sequestration topics (thanks to Peter Lloyd, DEG Advisory Board).

DEG has initiated a membership drive to attract new national, international, and student members by implementing a "no dues" policy for AAPG student members who join DEG. Please support these activities and the Division of Environmental Geosciences by joining!

Jane Ellis-McNaboe, PG
EnviroTech Consultants, Inc.



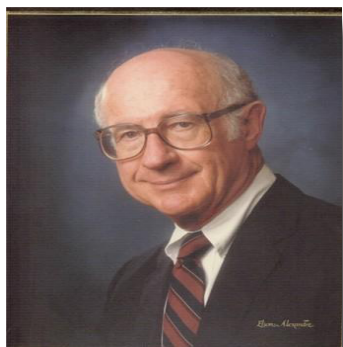
PETROLOG
PETROLOG, INC.
JOHN T. WILLIAMS
Geologist, P.G.#5899, President
Geological Well Logging
P.O. BOX 7028
VENTURA, CA 93006
jtw@petrolog-geological.com
(805) 642-2847 • Fax(805) 980-5569 • Cell(805) 231-3793

GREGORY GEOLOGICAL SERVICES

Glenn J. Gregory
California Professional Geologist #3676

4800 Easton Drive, Suite 101
Bakersfield, CA 93309

(661) 633-5555
glennng@bak.rr.com



Charles W. Hatten

1923-2010

Charles W. Hatten (Charlie) passed away June 19, 2010 in San Marino, CA. Charlie received a Bachelor of Arts degree in Geological Sciences from the University of California at Berkeley. From 1949 until 1951, Mr. Hatten was a geologist with Oil Properties Consultants, located in Pasadena, California, and from 1951 until 1953 he served as a geologist with Caltex Petroleum Company. From 1953 until 1958, Mr. Hatten was senior geologist with Standard Oil Company of California, in which capacity he conducted paleontological and geological studies in Cuba and the Caribbean area and many countries of West Africa. From 1962 until 1965, Charlie was a senior geologist with several international subsidiaries of Standard Oil Company of Indiana, and supervised exploration geology in Spain, Africa, the Far East and South Pacific. From 1965 until 1982, he was Executive Vice President and subsequently President and director of the Great Basins Petroleum Company, during which time he managed the company's oil and gas exploration and production operations. Between 1982 and 1986, he was Chief Operating Officer, President and director of Century Production, Inc., a privately-held company engaged in evaluating and acquiring producing oil and gas properties. Charlie was President and founder of San Carlos Oil and Gas Corporation, which was engaged in exploration and drilling ventures. Charlie is survived by his wife of 54 years, Cornelia, and his children: Carol, Karen, Bill, and Charlie, Jr.

Provided by Joseph Kandle (President, Tri-Valley Oil & Gas Co.)-

Charlie Hatten has been THE main advocator of deep oil reserves in California and a driving force for deep, 20,000 feet exploration in California. The Great Basins' well in Bakersfield that was drilled to 21,640 ft. (yes, 4-miles deep) is still one of the signature wells of all the 237,350 wells ever drilled in California. Charlie has left a legacy on the California oil industry. We, in Tri-Valley, proudly point to the fact that we have the old Great Basins geology library which contains geology on every continent in the world except Antarctica. Charlie had a voracious professional appetite for collecting data and always wanting to know more.

J.M. "BUZZ" DELANO, JR.
Consultant

Cell (661) 747-0337
Office (661) 832-5229
Fax (661) 832-5229
Email: BuzzBake@aol.com

Delano Petrophysical
Consulting Services

816 Ferdinand Ct.
Bakersfield, California 93309

Dipmeter Analysis
Tape Conversion Editing
Expert Petrophysical Analysis
Wellsite Supervision

DAVID B. DEL MAR

Consulting Registered Geologist
California Registered Geologist #634

Development - Thermal EOR - Property Reviews

2027 Park Drive
Los Angeles, CA 90026

H (323) 664-3358
dbdelmar@earthlink.net

Early
SJGS
foursome
lines up a
putt



San Joaquin Geological Society Annual Fall Classic Golf Scramble and Barbecue Friday, September 17th, 2010

Golf Tournament at Sundale Golf Course
BBQ Lunch courtesy of Halliburton

Family BBQ and Raffle at the Kern County Museum
BBQ by: "The Ridge Route Boys Company"
Onsite BBQ Featuring Tri Tip and all the Fixin's

• Happy Hour at 5:00 PM • Dinner at 6:00 PM
• Adults \$20.00 • Students \$10.00 • Children \$5.00

Please [RSVP](#) by Tuesday, September 10th (For BBQ) - Help the Planners
(BBQ is NOT prepaid, you may pay at the event)

BBQ RSVP & Golf Questions: PacSeis, Inc. - Kathy Smith (kathysmith@pacseis.com) Phone:
(661) 322-1171

-----Cut on Line and Mail in Golf Reservation-----

Golf Tournament

Sundale Golf Course
7:30 AM - Shotgun Start
\$75.00/ Person
Includes:
Green Fee, Cart, Lunch,
Drinks & Tee Prizes
Reservation Deadline
September 1, 2010

<u>Registered Players</u>	<u>Golf \$</u>	<u>BBQ\$</u>	<u>Shirt Size</u>
Golfer 1 _____	_____	_____	S M L XL XXL
Golfer 2 _____	_____	_____	S M L XL XXL
Golfer 3 _____	_____	_____	S M L XL XXL
Golfer 4 _____	_____	_____	S M L XL XXL
Total \$	_____	_____	
Contact email: _____	Contact Phone: _____		

Return Form and Checks to: *SJGS, P.O. Box 1056, Bakersfield, CA 93302, Attn: Kathy Smith*



PROVIDING GEOSCIENCE SCHOLARSHIPS
Coast Geological Society



"THE WOOLLEY"

12th Annual - GOLF TOURNAMENT & BBQ²
FRIDAY, October 1, 2010 tee off @ noon

ELKINS RANCH GOLF COURSE
1386 Chambersburg Road, FILLMORE, CA

Golf: 9:30 am check in/driving range/putting contest/BBQ lunch, 12:00 noon shotgun start
BBQ: 5:00 pm Tri-tip & chicken BBQ dinner, beverages, prizes, Raffle & camaraderie
Entry Fee: \$110 per person includes green fee, cart, range balls, BBQ lunch & BBQ after golf
Format: Four-person scramble, awards to 1st, 2nd, and 3rd place, long drive, closest to hole, etc...
Open to the first 144 players who register

SPONSORSHIP INFORMATION

The success of this year's 12th Annual "The Woolley" Golf Tournament & BBQ will depend greatly on all our sponsors. Each sponsor plays a vital role in contributing to this fundraising event which provides scholarships and teacher awards through the Coast Geological Society, in memory of John J. Woolley. (In association with Pacific Section AAPG federal nonprofit tax id no. 95-6054415)

All Sponsorship Packages include company name & logo (if provided) on tee-box sign and banner at golf course, and recognition on the CGS website, in the event program/flyer, and at the BBQ Dinner.

"GUSHER" SPONSORSHIP - \$1000

Eight golfers (two foursomes) plus BBQ attendance

"WILDCATTER" SPONSORSHIP - \$600

Four golfers (one foursome) plus BBQ attendance

"PROSPECTOR" SPONSORSHIP - \$350

Two golfers plus BBQ attendance

"ROCK HOUND" SPONSORSHIP - \$200

One golfer plus BBQ attendance

DETACH HERE or DON'T

Entry form: YES! I would like to participate in the following ways:

Company Name(s) _____ (Sponsors Email your Logo !)

Players: _____

Players: _____

Sponsorship Level (circle one): \$1000 \$600 \$350 \$200 = \$ _____

Individual Golfer w/BBQ - (not covered by sponsorship) No.: _____ @ \$110/player: = \$ _____

"The Package" (2 mulligans, 5 raffle tickets, putting contest*) No.: _____ @ \$25/package: = \$ _____

BBQ Guest only: No. Guests: _____ @ \$20/Adult _____ @ \$14/Child: = \$ _____

John J. Woolley Scholarship Fund Contribution: Monetary Donation: = \$ _____

*additional raffle tickets & mulligans sold separately on site.

TOTAL: \$ _____

VISA / MC / ~~AMEX~~ / DISCOVER #

CARD EXPIRATION DATE: Fax # for receipt, if desired _____

SIGNATURE: _____ PRINT CARDHOLDER NAME: _____

FAX or EMAIL WITH CREDIT CARD INFORMATION or MAIL WITH CHECKS PAYABLE TO:

COAST GEOLOGICAL SOCIETY, P.O. Box 3055, Ventura, CA 93006

FAX COMPLETED FORM TO: (805) 497-7933, Attn: Shaun Simon

EMAIL COMPLETED FORM & LOGO TO: ssimon@cottonshires.com



AAPG-SEG

**West Coast
Student Expo**

Sept. 30-Oct. 2, 2010



**California State University,
Northridge**

***Student poster presentations, company
interviews, networking, field trips, and more...***

***Interested Companies and Students see:
www.csun.edu/geology/aapg-seg.htm
for registration information***

DIBBLEE GEOLOGIC MAP COLLECTION AVAILABLE FOR PURCHASE

The Dibblee Geologic Map Collection is the most complete compilation of geologic mapping of over one quarter of the State of California by one person. This collection is now available through several venues. 359 of Tom's maps are available in digital format. 60 of the original 76 are only available as scanned PDF files.

Dibblee Geologic Map Collection as CS4 .ai files

On a temporary basis as part of our fundraising efforts we are offering the complete Adobe Illustrator Dataset as CS4 .ai files. Data in this set is in a layered format. This will allow the user to examine and manipulate the data to incorporate it into their dataset. A presentation of the data set can be arranged.

At this time we are offering the 419 map set at a per-set price of \$54,470 + Tax. Appropriate prices can be negotiated for partial bulk sets such as the San Joaquin Valley or Ventura Basin.

We are asking for help in contacting the appropriate person within your company that might be able to determine your company's interest in acquiring this dataset. One major oil company has already acquired the dataset. This offer has never been made before this and may change as our funding goal is reached.

Dibblee Geologic Map Collection as Layered GeoPDFs on Datapages

The AAPG is featuring 359 of Tom's maps in digital format in the Datapages section on their web site for downloading as layered GeoPDF files. Maps will be added as they are digitized.

Dibblee Geologic Map Collection as printed map sheets

All Dibblee maps will continue to be available as printed map sheets. 60 of the initial map sheets are only available as printed maps.

Inquiries about the purchase of the map sets should be addressed to:

Dr. John Minch, Editor,
Thomas Dibblee Jr. Geology Center
Santa Barbara Museum of Natural History,
2559 Puesta del Sol, Santa Barbara, CA 93105
805-569-1800 - jmainc@earthlink.net

Contributions are also appreciated and can be made to the Dibblee Map Digitizing Fund, Dibblee Geology Center, Santa Barbara Museum of Natural History Attn: John Minch



GEOLOGICAL LOGGING INC.
9229 Beatty Drive, Suite B
Sacramento, CA 95826
Telephone 916-452-9573
Cel 952-9975 Fax 452-9573
geolog@sbcglobal.net

ERNIE BURROUGHS
President/Owner
Registered Geologist No. 1628



RESERVOIR CHARACTERIZATION
GEOLOGY
PETROPHYSICS
DATABASE MANAGEMENT
DIGITIZING & SCANNING

EarthQuest Technical Services, LLC

David R. Walter

drwalter@eqtservices.com
www.eqtservices.com

2201 'F' Street
Bakersfield, CA 93301
661•321•3136



ROCK SHOP!!! I am a sucker for rock shops. Or, should I say, that as I drive a geologist's vehicle, that the wheels on my Saturn Vue automatically turn towards a rock shop whenever I drive by them. Imagine my surprise when I found one of the greatest ones I have ever seen in the small town of Angels Camp in the Sierra Nevada foothills!

Angels Camp is more famous for the Jumping Frog Contest, which was made famous when Mark Twain wrote about it a long time ago. I had to crack up when I noticed that in the old downtown area there are plaques set in cement on the sidewalks on each side of the main street. However, unlike Hollywood, this hall of fame did NOT have the names of famous stars and starlets, but instead had the names of FROGS that had won the jumping contest. The year they won and the distance that they jumped were noted on the star of fame, along with the name. I was trying to explain this contest to Don Clarke and his wife at the recent Pacific Section AAPG function, when this outstanding geologist stopped me and told me that they had entered a frog in the contest! I asked him how he did, and he said that despite his greatest attempts at encouragement that his frog just sat there and did not jump at all!

OK, so much for things French. The Stories in Stone rock shop in Angels Camp is just amazing! Though one recent trip that my wife and I made did not fare so well (they were closed on that weekend!), I was able to visit the shop recently and get some photographs of the place along with some great rock samples. The samples were gifts that I handed out to the members of the Pacific Section AAPG executive committee during our meeting in Anaheim at the convention. I had also ordered some San Andreas Fault ties from Josh Bach in New York City, but I think the rocks were the biggest hit. There were nice chunks of purple amethyst, big blocks of pyrite crystals ("fools gold"), nice clusters of quartz crystals, and beautiful onyx bookends from Mexico.

With the help of Pam and Russ, the owners of the store, I picked out the samples. At the time Russ was busy

finding just the right pyrite samples to fill an order. It turns out that they have the exclusive assignment to furnish the "fools gold" samples to the Wells Fargo Bank for the museum-type settings that they have in many of their banks!

Their store is amazing! When you first enter the store, there is a large area with cabinets filled with thousands of fine rock and crystal specimens, including many amethyst geodes from Brazil, along with a large section of fossils, including many sharks' teeth! It turns out that at one time Russ had been mining sharks' teeth on Shark-tooth Hill east of Bakersfield. Behind this area of 1,000 square feet or more was a storage room that split into two other rooms. Directly behind it, and behind a giant replica of a dinosaur, was a room where Russ teaches children and others about geology. He loves that subject so much that he constructed a classroom! Inside were some 50 chairs, and all the walls were adorned with giant letters that said "METMORPHIC", "IGNEOUS" and "SEDIMENTARY, MY DEAR WATSON" (not really!). They mentioned to me that they had many schools come through their classroom, including some from as far away as Stockton, Sacramento and even the Bay Area.

In the other direction from the storage room was a large warehouse filled with rock samples. This is where row after row of storage shelves harbored hundreds to thousands of amethyst geodes from Brazil, quartz crystals, onyx bookends, clusters of pyrite crystals, etc. Russ said that they sell their huge store of rocks wholesale, but that I needed a permit proving I was a wholesaler to get to pay the stamped price. So, I paid about 50% more! It was still a good deal!

So, there you have it! I have been to Geiger's, a giant store in Pasadena that sells quality rock samples but also a lot of equipment needed for lapidary, to a



fairly large rock shop along interstate 80 between Dixon and Davis, a rock shop in Coarsegold near Mariposa in the Sierra Foothills, and probably a dozen or more rock shops over the years in many western states, but NEVER a rock shop like Stories in Stone. Never!

So, if you need a rock shop to visit, make it this one! And, if you visit in early May, you might catch a few hopping frogs at the same time!

Scott Hector
Past-President
Pacific Section AAPG



Joseph F. Elliott

Geophysical Consultant

Exploration Management

international / domestic
interpretations
synthetics
modeling

Office: (949) 240-1505

26801 Lariat Circle
San Juan Capistrano, CA 92675

Alaska Geological Society

www.alaskageology.org

P. O. Box 101288
Anchorage, AK 99510

Contact: Tom Homza
907.770.3701



Luncheon meetings are held monthly September through May, usually on the third Thursday of the month, at the BP Energy Center (1014 Energy Court) from 11:30 a.m. to 1:00 p.m. The hot lunch cost is \$20 for members with reservations; \$22 for non-members with reservations; and \$25 without reservations. The box lunch cost is \$13 for members with reservations; \$15 for non-members with reservations; and \$18 without reservations. For reservations, call the AGS reservation voice mail at 907-258-9059 or contact David Hite at hiteconsult@acsalaska.net by noon on Monday before the meeting.

President:	Tom Morahan	907.230.1672	tmorahan@petroak.com
President-Elect:	Bill Morris		William.R.Morris@conocophillips.com
Vice-President:	Ken Helmold	907.269.8673	ken.helmold@alaska.gov
Secretary:	Chad Hults	907.786.7417	chults@usgs.gov
Treasurer:	Alan Hunter	907.263.7947	alhunter@chevron.com
Past-President:	Tom Homza	907.770.3701	Thomas.Homza@shell.com

Coast Geological Society

www.coastgeologicalsociety.org

P. O. Box 3055
Ventura, CA 93006

Contact: Muriel Norton
muriel@subsea-usa.com



Dinner meetings are held monthly September through June, usually on the third Tuesday of the month, at the Poinsettia Pavilion, 3451 Foothill Road in Ventura. Social hour starts at 6:00 p.m., dinner is served at 7:00 p.m., and the talk starts at 8:00 p.m. The cost of dinner is \$18 (with reservations), \$25 (without reservations), or \$10 (students and K-12 teachers); the talk is free. For reservations, please email Christine White at cwhite@dcorllc.com or make reservations online at www.coastgeologicalsociety.org. Reservations should be made by 4:00 p.m. on Friday before the meeting.

President:	Mike Nelson	805.535.2058	president@coastgeologicalsociety.org
Past President:	David Panaro	805.654.2327	pastpresident@coastgeologicalsociety.org
Vice President:	Jon Schwalbach	661.665.5081	vicepresident@coastgeologicalsociety.org
Secretary:	Jerry Nichols	310.245.8897	secretary@coastgeologicalsociety.org
Treasurer:	Ed Magdaleno	805.535.2086	treasurer@coastgeologicalsociety.org

Los Angeles Basin Geological Society

www.labgs.org

515 So. Flower Street, Ste 4800
Los Angeles, CA 90071

Contact: Bill Long
213.225.5900 x 205



Luncheon meetings are held monthly September and October; and January through June, usually on the fourth Thursday of the month, in the Monarch Room at The Grand at Willow Street Conference Centre (4101 E. Willow Street) in Long Beach. Lunch is served at 11:30 a.m., and the talk starts at 12:15 p.m. The cost is \$20 (with reservations), \$25 (without reservations), or \$0 (students are covered by Halliburton and Schlumberger). Reservations can be made online at www.labgs.org or by contacting Marieke Gaudet at 562.624.3364 or marieke_gaudet@oxy.com. Reservations must be made prior to Tuesday before the meeting.

President:	Bill Long	213.225.5900 x205	william.long@breitburn.com
Vice President/Program Chair:	Greg Hummel	213.225.5900 x251	ghummel@breitburn.com
Treasurer:	Bert Vogler	562.432.1696	hvogler@kleinfelder.com
Secretary/webmaster:	Marieke Gaudet	562.624.3364	Marieke_Gaudet@oxy.com
Scholarship Program	Jean Kulla	949.500.3095	k2mobile@msn.com

Northern California Geological Society

www.ncgeolsoc.org

9 Bramblewood Court
Danville, CA 94506-1130

Contact: Barb Matz
Barbara.Matz@shawgrp.com



Evening meetings are held monthly September through May, usually on the last Wednesday of the month, at the Masonic Center (9 Altarinda Road) in Orinda. Social hour starts at 6:30 p.m., and the talk starts at 7:00 p.m. (no dinner). For reservations, leave your name and phone number at (925) 424-3669, or at danday94@pacbell.net before the meeting. Cost is \$5 per regular member; \$1 per student member; and \$1 per K-12 teachers (new!).

Northwest Energy Association

www.nwenergyassociation.org

P. O. Box 6679
Portland, OR 97228-6679

Contact: Tim Blackwood
503.656.0156



Breakfast meetings are held monthly September through May, usually on the second Friday of the month, at the Multnomah Athletic Club (1849 SW. Salmon Street) in Portland. Meeting time is at 7:30 - 9:00 am. The cost is \$18. For information or reservations, contact Treck Cardwell at 503-226-4211 ext. 4681.

President	Tim Blackwood	tblackwood@pacificgeotechnicalllc.com
Secretary	Treck Cardwell	t2c@nwnatural.com

Sacramento Petroleum Association

P. O. Box 571
Sacramento, CA 95812-0571

Contact: Rick Blake
925.422.9910



Luncheon meetings held monthly January through November, on the third Wednesday of the month. Location: Club Pheasant Restaurant in West Sacramento. The meetings starts at noon. The cost is \$16 - \$20. For information or reservations, contact Pam Ceccarelli at 916-322-1097x2 or Pam.Ceccarelli@conservation.ca.gov.

President:	Jerry Reedy	916.486.2643	JWR5532@aol.com
Vice-President:	David Hartley	530.304.4277	drilmax1@aol.com
Secretary/Treasurer	Dan Wermiel	916.322.1097x5	dwermiel@consrv.ca.gov
Editor	Pam Ceccarelli	916.322.1097x2	pceccare@consrv.ca.gov

San Joaquin Geological Society

www.sjgs.com

P. O. Box 1056
Bakersfield, CA 93302

Contact: Kurt Johnson
kurt_johnson@oxy.com



We have dinner meetings on the second Tuesday of the month at the American Legion Hall at 2020 "H Street" in Bakersfield. There is an icebreaker at 6:00 pm, dinner at 7:00 pm, and a talk at 8:00 pm. Dinner is \$20.00 for members with reservations and \$25.00 for nonmembers, \$25.00 for members without reservations and \$30.00 for nonmembers without, and the talks are free.

President:	Jack Grippi	JGrippi@aeraenergy.com
President-Elect:	Tim Elam	paselam@peoplepc.com
Vice-President:	Stephano Mazzoni	Stephano_Mazzoni@oxy.com
Secretary:	Mike Minner	MMiner@chevron.com
Treasurer:	Linji An	LAn@aeraenergy.com

- Images (graphics, photos, and scans) must be at least 300 dpi resolution. Text should be scanned at least 600 dpi.
- Scanned photos, illustrations (line art) or logos must be scanned at 300 dpi minimum and saved as a tiff or eps.
- Avoid clip-art and images from the internet. These images are low-resolution (72 dpi).

Advertising Rates

Members	Single Issue	Year (6 issues)
Full Page	\$400.00	\$1600.00
Half Page	\$250.00	\$1050.00
Quarter Page	\$150.00	\$650.00
Business Card		\$250.00

Societies Free Advertising

Convention Societies	Unlimited Space 1/4 Page	PSAAPG Newsletter AAPG Explorer
----------------------	-----------------------------	------------------------------------

Newsletter Deadline

September & October Issue

September 17th



Photo courtesy of Andreas Mulch

Investing in Energy to Support Education and Research



“Today’s computational capacity and the availability of large volumes of data from ground-based observations and satellites offer new opportunities for understanding how the Earth system works and how human activities interact with Earth processes. The Sanford Center for Computational Earth and Environmental Science will enable the development of sophisticated models to address questions about energy and freshwater resources, natural hazards, climate change, and other global issues.”

Jerry M. Harris, Director, Center for Computational Earth and Environmental Science, Professor and Former Chair, Department of Geophysics, Stanford University; Director, Stanford Wave Physics Laboratory; Past Distinguished Lecturer, Society of Exploration Geophysicists, American Association of Petroleum Geologists, and Society of Petroleum Engineers.

The alumni-managed Stanford Petroleum Investments Funds own, manage, and acquire producing oil and gas royalties and other energy investments. Income from these investments provides essential discretionary funding in support of energy and environmental education and research and other programs of the Stanford School of Earth Sciences. The Petroleum Investments Funds provided seed funding to help launch the Stanford Center for Computational Earth and Environmental Science.

If you would like to sell or donate producing oil and gas royalties, or learn more, visit <http://earthsci.stanford.edu/support/pif> or call or email David Gordon, Associate Dean, Stanford School of Earth Sciences, at (650) 723-9777 or dsgordon@stanford.edu to see how you can help.



Stephan A. Graham, W.J. and M.L. Crook Professor
School of Earth Sciences, Stanford University, Stanford, California

A 2-DVD set containing the information described above may be purchased from the Pacific Section American Association of Petroleum Geologists (PSAAPG) Publications Committee for \$39.00 by contacting (and including a check or credit card information and a shipping address)

Larry Knauer (Publications Chair)
larryknauer@chevron.com
661-392-2471

See the facing page for additional information regarding this project >>>>>>>>>>>>>>>>>>

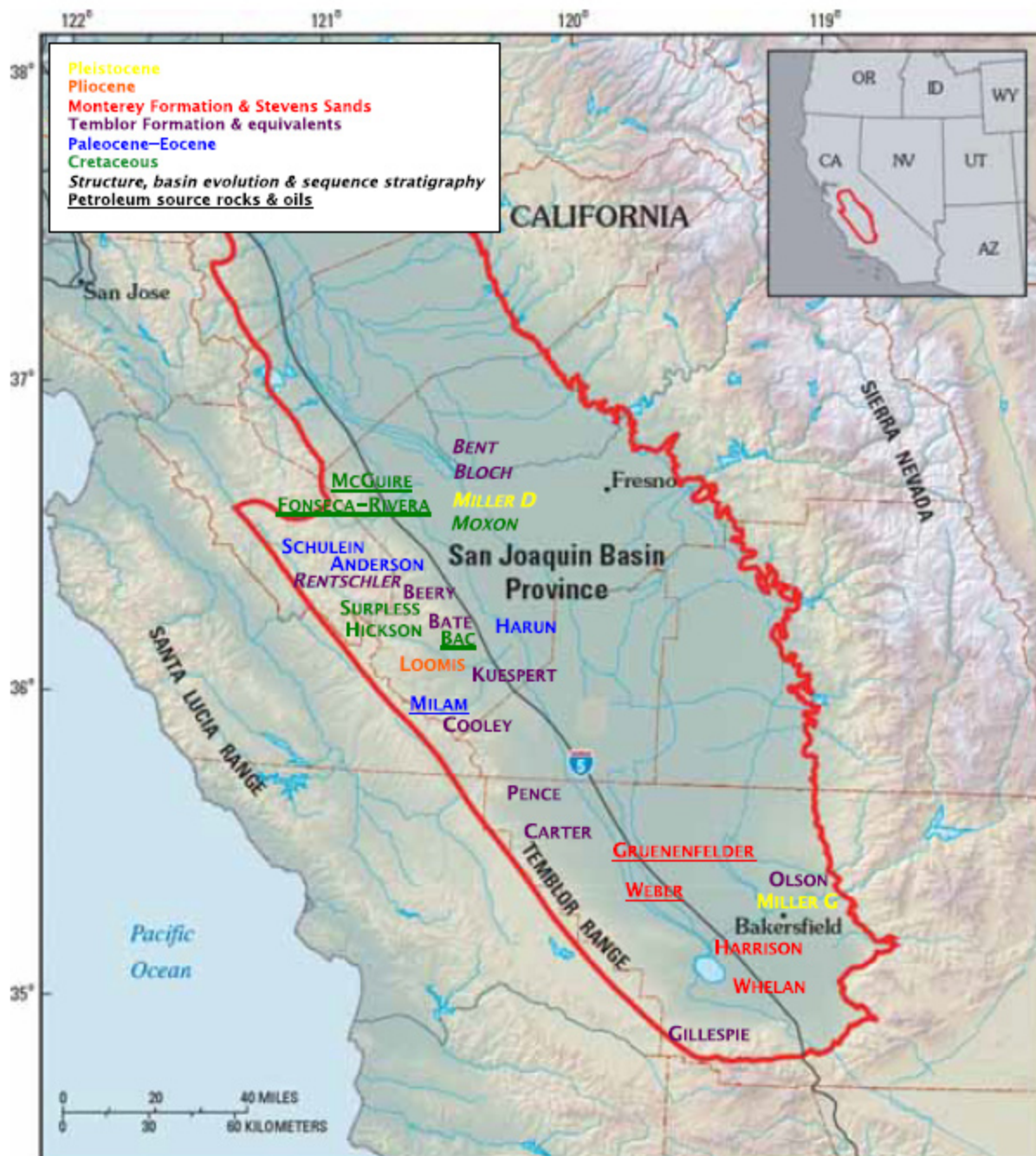


Figure 1. Index map for dissertations included in this DVD, modified from Scheirer, A.H., editor, 2007, Petroleum Systems and Geologic Assessment of Oil and Gas in the San Joaquin Basin Province, California: U.S. Geological Survey Professional Paper 1713. Names indicate dissertation authors; colors indicate ages of stratal units studied in dissertations; special thematic emphasis is indicated by underlining or italics. Names are positioned on the map in approximate geographic position of study; basin-scale studies are arbitrarily placed in the center of the basin.



PACIFIC SECTION AAPG
P. O. Box 1072
BAKERSFIELD, CA 93302

PRESORTED
STANDARD
U.S. POSTAGE PAID
BAKERSFIELD, CA
PERMIT NO. 1163

George Harper
Account Representative
Baker Hughes



Western US/US Land/Baker Atlas

Office: +1 661.334.3800 X 215 | Fax: +1 661.334.3808

Cell: +1 661.805.5984 | george.harper@bakerhughes.com

<http://www.bakerhughes.com> | Advancing Reservoir Performance



PacSeis, Inc.
Pacific Seismic Company

The leader in sub-surface information

Resources that Deliver the Difference

- One of the largest seismic databases available for license
- Seismic available for immediate license
- Over 500,000 line miles of 2D & 3D data located in domestic United States (onshore & offshore)
- 2,500 square miles of 3D surveys

Exclusive Opportunity 2010

Recently acquired seismic databases by Pacific Seismic Co.

- Chevron USA California, OXY USA Nationwide (including Arco & Enron)
- Santa Fe Energy, TXO, Cities Services Oil & Gas Nationwide
- Southern Pacific, PG&E / NGC, SOHIO
- Vintage Nationwide
- Seventeen Newly Acquired 3D's Covering Northern & Southern California

Pacific Seismic Company

You're full-service Seismic Brokerage & Acquisition Company

Exploration Consulting • Prospect Financing • 3D Seismic Project Management

Bakersfield

Denver

Tulsa

Houston

Tel: 661.322.1171 • Fax: 661.322.1181

Web Site: PACSEIS.com

dwright@pacseis.com curtisconway@pacseis.com kathysmith@pacseis.com
brianrangel@pacseis.com danszymanski@pacseis.com