



Pacific Petroleum Geology



NEWSLETTER

Pacific Section • American Association of Petroleum Geologists

May & June • 2009

Locals join the fun on Seeps Tour...



PACIFIC SECTION AAPG
P. O. Box 1072
BAKERSFIELD, CA 93302

PRESORTED
STANDARD
U.S. POSTAGE PAID
BAKERSFIELD, CA
PERMIT NO. 1163

2008-2009 OFFICERS

President Don Clarke
562.212.9934
labasindon@gmail.com

President-Elect Scott Hector
707.974.6402
scott@hobbyenergy.com

Vice President Don Miller
661.869.8005
donald_miller@oxy.com

Secretary Kathy Miller
661.302.5098
kathymiller@chevron.com

Treasurer Donna Thompson
661.395.3029
sjec@sbcglobal.net

Past President Jonathan Kuespert
213.225.5900 x224
jkuespert@breitburn.com

Editor-in-Chief Karen Blake
707.974.8313
karen@hobbyenergy.com

STAFF

Advertising Michael Quilliam
661.395.5443
mquilliam@pxp.com

Web Master Bob Countryman
robert_countryman@oxy.com

Web Coordinator Tim Stephenson
661.395.5520
tstephenson@pxp.com

MEMBERSHIP

Membership Chair Brian Church
bchurch@chevron.com
661.654.7863

PUBLICATIONS

Publications Chair Larry Knauer
661.392.2471
larryknauer@chevron.com

EVERY ISSUE

3 Message from the President • Don Clarke

5 Editor's Corner • Karen Blake

12 Farewell to Friends

15 Society Announcements

18 Member Society News

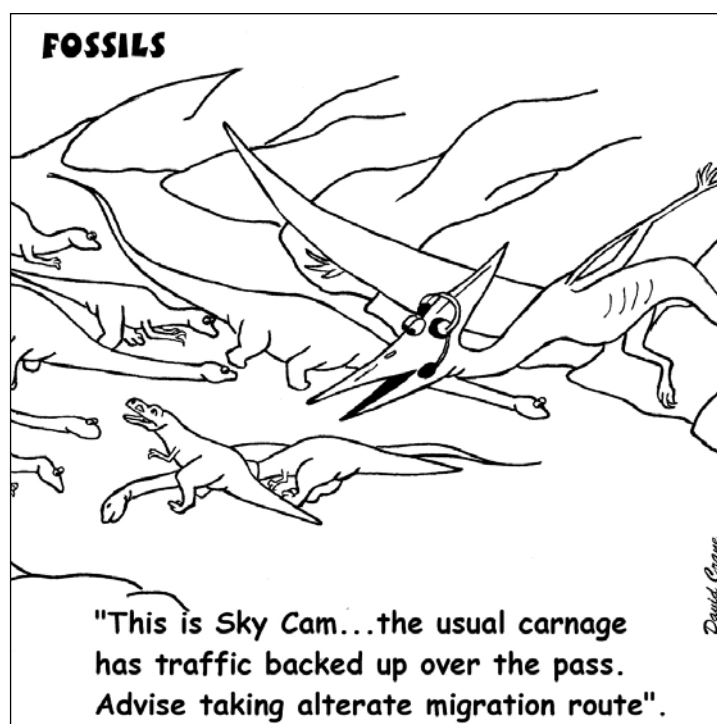
THIS ISSUE

6 Message for the General Chair • Tom Hopps

7
2009
Pacific Sections
AAPG • SEPM • SEG
Convention Photos

Courtesy of Brian Pitts & Scott Hector

11 Dick Cheney Drinks Milk • Scott Hector





MESSAGE FROM THE PRESIDENT

DON CLARKE

It has been my pleasure serving the Pacific Section AAPG this last year. I would like to thank my Executive Committee for their dedication and service. My thanks to Tom Hopps and his Convention Committee for giving us such a great convention in Ventura last May. Pacific Section continues to thrive due to the dedicated efforts of the volunteers.

This year I tried to continue and expand upon the outreach efforts of PSAAPG immediate past President Jon Kuespert. The focus was on education in the Earth Sciences. Jon and I represented the PSAAPG at the MESA Energy Day event at CSULB in March. Bob Ballog and Tanya Atwater put together a very nice forum on outreach at the Ventura Convention. Teachers and administrators came from all over southern California to attend. We even got California State Geologist John Parrish, PhD to attend. Professor Kathy Marsaglia of CSUN put together the first west coast Student Expo to bring the companies to the students. It was also a great success with an attendance similar to other long standing Student Expos in other parts of the country. We continued with the Imperial Barrel Award again this year and will sponsor a team from San Diego State at the national competition this June in Denver, Colorado.

Professor Emeritus Elridge Moores has championed the cause of K-12 Earth Science for many years. This year PSAAPG has joined the effort. The plan is to get the University of California to accept a high school Earth Science class for the lab science requirement. Standards have already been set and many scientists and organizations have joined in the fight. Frustratingly, no significant action has been taken by the University of California Board of Regents. I have written to each Regent urging action. The Secretary sent me a letter back thanking me for my interest and the Governor's letter said that it was the Regents problem. In May I went to Washington with a group of AAPG members to meet with Congressional Representatives, Senators and their staff on this and other issues. Nancy Pelosi and her staff were unable to meet with us. Linda Sanchez was unable to meet with us because she had a baby the day I was there. Her staff member Patrick Gibson, Legislative Correspondent/ Assistant, gave me a fair ear and showed much interest. This was a very encouraging meeting. Barbara Boxer was unable to meet with us but her staff member Bridget Petruczuk, Legislative Assistant, gave me thirty minutes to explain our cause. Again I am encouraged. My last visit was to Dianne Feinstein's office. My appointment was with Matt Nelson, Legislative Assistant. He was from Maine and had an environmental science background. As I explained the



DHISERVICES

Formation Evaluation Specialists

www.dhiservices.com

Les Collins

Regional Operations Manager

4030 Well Tech Way
Bakersfield, CA 93308
Tel: +1 (661) 750-4010 Ext 107
Fax: +1 (661) 840-6602
Cell: +1 (661) 742-2720
Email: lcollins@dhiservices.com

problem in California, he definitely came to understand the dilemma we are having with geoscience education. Senator Feinstein did find time to meet briefly with us and I think that we made progress. Her husband, Richard Blum by the way, is the President of the University of California Board of Regents.

The Washington meetings also included discussions on future workforce needs in petroleum geology, the opening up of public lands for oil development and future research and development needs for the 21st century.

I hope that you will join the effort to increase the teaching of the Earth Sciences in our public schools. Letters to your Congressman, Senators, State Assemblymen and the presidents of the Universities will help.

Again I would like to thank you for the opportunity to serve you and the Pacific Section AAPG. It has been my great pleasure. I wish Scott Hector great success as he takes the helm.

Don Clarke



PacSeis, Inc.
Pacific Seismic Company

The leader in sub-surface information

Resources that Deliver the Difference

- One of the largest seismic databases available for license
- Seismic available for immediate license
- Over 500,000 line miles of 2D & 3D data located in domestic United States (onshore & offshore)
- 2,500 square miles of 3D surveys

Exclusive Opportunity 2009

Recently acquired seismic databases by Pacific Seismic Co.

- Chevron USA California, OXY USA Nationwide (including Arco & Enron)
- Santa Fe Energy, TXO, Cities Services Oil & Gas Nationwide
- Southern Pacific, PG&E / NGC, SOHIO
- Vintage Nationwide
- Seventeen Newly Acquired 3D's Covering Northern & Southern California

Pacific Seismic Company

You're full-service Seismic Brokerage & Acquisition Company

Exploration Consulting • Prospect Financing • 3D Seismic Project Management

Bakersfield

Denver

Tulsa

Houston

Tel: 661.322.1171 • Fax: 661.322.1181

Web Site: PACSEIS.com

dwright@pacseis.com curtisconway@pacseis.com kathysmith@pacseis.com
brianrangel@pacseis.com danszymanski@pacseis.com

Every year, the Pacific Section reaches out to our educators and invite them to participate at our convention. It is usually a field trip. This year, we tried something different - an Educational Symposium. One immediate result from the symposium is our updated **Education** page on our website. When you visit the **Education** page, you will see four catagories:

Why Study Geology?
Scholarships/Grants
Teaching Resources
Petroleum Museums

When you go to **Why Study Geology** - click on the **Discover the World of Petroleum Geology**. This is a new website that was created by AAPG called Petroleum Geology.

Please review the **Scholarships/Grants**. If your organization offers scholarships and it is not listed, please let us know. We will get it posted.

Teaching Resources has been updated with several links, from universities, societies, government agencies, and industry. Know a science teacher - pass this information along.

Looking for something to do this summer, check out your local **Petroleum Museums**.

When you see Bob Countryman, thank him for his efforts to update our website.

IT'S HERE

PSAAPG MP48

“Contributions to the Geology of the San Joaquin Basin, California”
10 papers; 234 pages; a plethora of color figures; and a surprise!
To order send this ad with a check or credit card info to

PSAAPG Publications
P.O. Box 1072
Bakersfield, California 93302
or
order with a credit card by email
larryknauer@chevron.com

Cost with this ad is \$55 (includes shipping in the USA)



NOW THAT'S A COMMITTEE!

You had a terrific Convention Committee working for you to put on our 83rd Annual Meeting in Ventura in May. The market was down. Oil was down. Companies were in survival mode. The mood was somber. And on this bleak landscape, your committee saw opportunity! They saw Ventura as a place to restore, to find new and exciting ideas, to see old friends and colleagues, and to share in the excitement of being a geologist even when it's not the best of times.

Gene Fritsche with Bob Gray, Bill Bilodeau and Dale Kunitomi put on a great technical program. Bob Ballog kept the hotel and operations running without a single serious hiccup and Muriel Norton pretty much invented the budget and kept it in order. By sheer will power, Christine White and Mike Nelson exceeded their sponsorship goals and Steve Grayson sold all of the exhibit booths! Leni Field and John and Cindy Williams assembled great guest activities that really worked in our tight schedule. And John Minch managed to get all the signs and banners printed in spite of getting most of the information at the last minute (as usual).

The invisibly ever-present Ed Magdaleno did his usual fantastic job of making sure we always had an abundance of good food and drink while watching the costs. Somehow, in addition to the PPG Newsletter, Karen Blake managed to design, collect and assemble all the information, and publish the Convention Announcement and the Program – and help me come up with the right words at the right time. And the Barminski's, Joan and Mike, collected address lists and got the email blasts out on schedule (a daunting task), and with the help of Bob Gray's students and others, ran registration flawlessly, smiling all the while!

From the background, our advisors Kay Pitts, Larry Knauer, Mark Wilson and Don Clarke helped guide us along the right path, as did my Co-Chair, Dalton Lockman, now famous for saying, "Things are looking really good; this is just where we are supposed to be at this time." And of course my favorite is Lydia, my personal cheerleader and provider of time to complete every task. I thank them one and all. I am privileged to have chaired this terrific group of people called "the Committee".

Finally, thanks to you. You presented papers, posters and field trips. You helped with little unseen things at the meeting. You encouraged your company to support the meeting financially and to support its employees' attendance and participation. Including Bob Ballog's dog, 507 of you attended this meeting and filled almost every event to capacity. Together, we made the 83rd Annual Meeting of Pacific Sections AAPG – SEG – SEPM one of the best on record!



California State Geologist
John Parrish

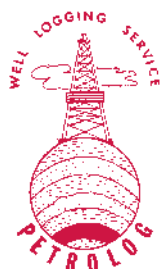


AAPG President
Texas State Geologist
Scott Tinker



Field Trippers

Students



PETROLOG

PETROLOG, INC.
JOHN T. WILLIAMS
Geologist, P.G. #5899, President

Geological Well Logging

P.O. BOX 7028
VENTURA, CA 93006
jtw@petrolog-geological.com

(805) 642-2847 • Fax (805) 980-5569 • Cell (805) 231-3793

Joseph F. Elliott

Geophysical Consultant

Exploration Management

international / domestic
interpretations
synthetics
modeling

Office: (949) 240-1505

26801 Lariat Circle
San Juan Capistrano, CA 92675

Speakers



GEOLOGICAL LOGGING INC.
 9228 Bailey Drive, Suite B
 Sacramento, CA 95828
 Telephone 916-452-9570
 Cell 916-8975 Fax 452-9672
 gloging@sbcglobal.net

ERINIE BURROUGHS
 President/Owner
 Registered Geologist No. 18281



RESERVOIR CHARACTERIZATION
 GEOLOGY
 PETROPHYSICS
 DATABASE MANAGEMENT
 DIGITIZING & SCANNING

EarthQuest Technical Services, LLC

David R. Walter

drwalter@eqtservices.com
 www.eqtservices.com

2201 'F' Street
 Bakersfield, CA 93301
 661-321-3136

Larry Knauer 2009 Pacific Section AAPG President's Award

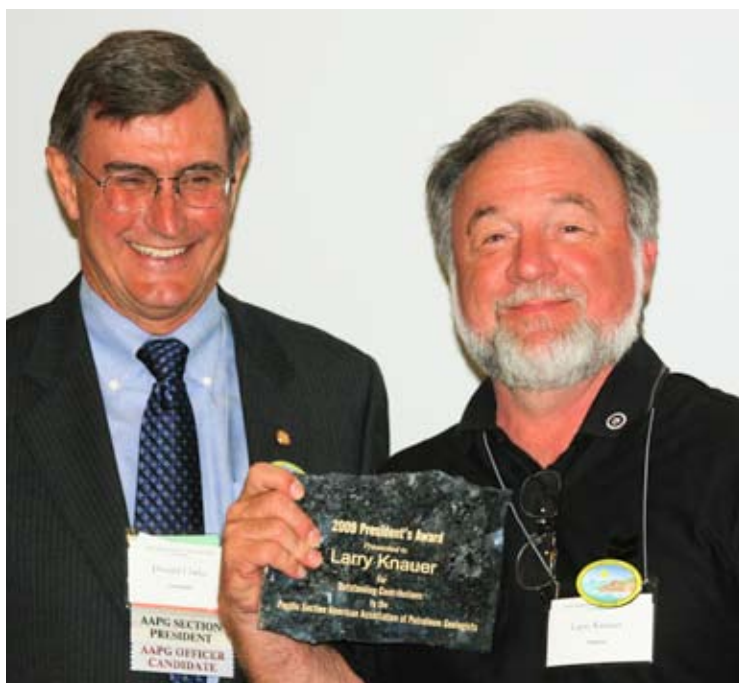
Larry Knauer has been an integral part of the Pacific Section AAPG for many years. It doesn't matter if it is new publications, the funding of an outreach project, a convention or just long term planning Larry is an integral part of the activity. We all owe Larry our heartfelt thanks for his involvement with the Pacific Section AAPG.

Each year the President of the Pacific Section has the opportunity to recognize the unique or extraordinary contribution of a member by presenting the President's Award. This year I have not only chosen to present the award but feel more than a little honored to be able to recognize the contributions of Larry Knauer to the Pacific Section AAPG. As most of you know Larry has not only held virtually every office in the Pacific Section and the San Joaquin Geological Society but was also editor of the newsletter for several years, has edited virtually all of our publications for the past twenty years, served on numerous convention committees and for more than 20 years has managed the Pacific Section's book business. Larry's contributions have already been recognized: he has been awarded the highest honor given by the Pacific Section, Honorary Lifetime Membership and his work with the Pacific Section has been recognized by the national AAPG with a national service award. But to be honest he keeps on giving...of his time, his insight, his enthusiasm. How many of us owe our own volunteerism to that call we received from Larry.

And this is not the only game he plays. He is a leader on his job at Kern River for Chevron, is the chair of the California Well Sample Repository, is a delegate to the national AAPG, and tops it off with a healthy personal life with wife Nancy and daughters Nicole and Ashley. In recent history he has edited and published two publications, has another publication in the works, led a record setting fund raising effort for the AAPG meeting in Long Beach, chaired a session at the Bakersfield convention and presented papers at several meetings, and provided advice for every convention committee and executive committee in recent history. Where indeed would we be without him?

It is an honor to recognize Larry's contributions with this 2009 President's award.

Donald C. Clarke, President Pacific Section AAPG



(Citation by Mark Wilson)



It is fair to say that you don't have a lot of friends that you see for years and years and stay in touch with nowadays. One that I have made is Harry Ptasynski, a petroleum operator out of Casper, Wyoming. Though he is in his 80's, he has stayed in great shape. We recently went together on a field trip to the Wheeler Gorge area near Ojai, California (part of the 2009 Pacific Section AAPG Convention in Ventura, California).

Kirt Campion with Marathon Oil led the field trip. He said that it might "get a little bit rough" in spots. That was an understatement! It was then that I found out from Harry that he had just had hip surgery. I was immediately worried about him as we hopped from boulder to boulder over a stream, and then climbed up a hillside and hung to a thin trail some 30 feet above the water! Harry ended up outdoing many of the younger members of the group! The worst incident was when Mark Yarlot fell into some water from 15 feet or 20 feet above the water as he tried to circumnavigate a hillside. Fortunately, Mark must have known how to fall, as he gracefully slid into a pool and didn't break a thing. Except maybe his pride!

Henry Walrond also walked with us around the outcrops of Eocene Matilija Sandstone, and Upper Cretaceous Jalama (?) Formation conglomerates and "zebra" mudstones. I can't say we were an imposing threesome but we were the Three Amigos. At an average age of 73 or so, the others knew that they had better not tangle with us! We met up with some young rock climbers, who were scaling the walls of the conglomerate gorge, right next to the tunnels that had to be bored in this area for Highway 33 traffic. I got to meet the young men and women and share my love for the sport. However, when they asked us if we wanted to "clip in", both Harry and I declined. If they had asked Harry, I think he might have gone up, recent hip surgery be damned!

OK, so our field trip group stopped several times so that Kirt could draw some cartoons about submarine canyon deposition, and as he talked it started to get dark. The guidebook had said we were going to get back to the Marriott convention center by 5:30 PM. However, it was already 5:30 PM and Kirt was still talking to us in the gorge, so we weren't going to make that time frame! We climbed out of the con-

glomerate section, down the creek on the "hairy" section of banded "Zebra" mudstones where we hovered on a thin trail above the creek, and made it up to the vans by 6:05 PM. Kirt talked there until about 6:30 PM, but we made it back to the hotels by 7:00 PM. That was good, since I had a dinner date for 6:30 PM. I missed that dinner bell, but with the modern miracle of the cellular phone I rescheduled the time so that my wife and I could have dinner with Manoucher Gorwhazzi, the father of the lovely girl that my son Morgan is to marry on May 23rd! However, I called "Mike" to see where he was and he said he was in the lobby, but I said that I could not see him. But he said, "I am here"! I finally said "Which Marriott are you in?" He said he was in the Marriott in Oxnard and I was in the one in Ventura! Once we got that figured out, we got together!

OK, I have rambled enough so that I can use up enough space to fill out a typical monthly article. As we drove back in the vans from the field trip, Harry mentioned to me that at one time he had lived close and been friends with the Cheney family in Casper. In fact, since they lived close by, Harry had had Dick Cheney baby sit his two children a number of times. He said that his wife and he found him to be a wonderful young man and a great baby-sitter. However, he drank a great deal of milk! They knew that every time Dick was coming over that they would have to stock up with a LOT of milk!

Much to his surprise, when Harry attended a meeting once where Dick was a speaker, Dick spotted him in the audience. Dick yelled out, "Hey, I used to babysit for that man!"

And now you know the rest of the story.



Carroll L. Hoyt

1927-2009

Carroll L. Hoyt, former CEO of Nekton Inc. and geologist in the Ventura office of General Petroleum (Mobil Oil) Corp. from 1957 to 1967, died of cancer April 1, 2009, at his home in Hemet, California, at the age of 82. As a Mobil oil scout, he was a regular attendee at the Coast Geological Society Thursday lunches at the Pierpont Inn in Ventura during a time of intense oil exploration in the Ventura Basin.

After leaving Mobil and working for several years as a stock broker for Walston Coulstock, Carroll was asked to be the President and CEO of Nekton, Inc., a company engaged in marine geophysical surveys and geology, especially in the Santa Barbara Channel and the Borderland region to the south. He served in this capacity at a time when marine exploration was proceeding at a high pitch off the California coast, and he commonly referred to the submersibles used by Nekton as “jeeps of the sea.”

Carroll was born in Montesano, Washington, on April 5, 1927 and served in the Navy from 1943 to 1945 as an instrument technician.

After the war and after completing his GED, he enrolled in the Department of Geology at the University of Washington, receiving his BS degree in 1955 after taking a summer field course in geology offered by Oregon State College. He undertook a MS thesis under the legendary J. Hoover Mackin, in which he mapped a Columbia River basalt unit that he named the Hammond Sill. Prior to his field mapping, it was assumed that the Columbia River basalts are all flows, but Carroll identified critical places where the basalt could be shown to intrude overlying sediments, including a now-famous exposure in Corbaley Canyon near Waterville, Washington. His paper, published in Northwest Science in 1961, was controversial. But in later years, his interpretation was vindicated, and intrusive relations (“invasive flows”) are now widely recognized in Columbia River basalts throughout the Columbia Plateau and Coast Range.

After retirement, Carroll returned to an early interest and began re-examining critically the hard geological and geophysical evidence for plate tectonics, finding that many of the assumptions in the modern literature are not fully based on factual data. At the time of his death, he was completing a book on this subject, The Architecture of Geodynamics, that will be published by Wikipedia within the coming year.

Carroll also published a book entitled Adventure Short Stories, which included accounts of his experiences as a Mobil field geologist in Alaska during the 1960s (Author House, Bloomington, IN, 2008)

Carroll is survived by his wife, Glenna, daughters Randi and Traci, son Brad, and 9 grandchildren.

GREGORY GEOLOGICAL SERVICES

Glenn J. Gregory

California Professional Geologist #3676

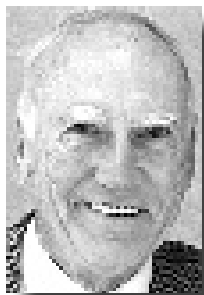
4800 Easton Drive, Suite 101
Bakersfield, CA 93309

(661) 633-5555
glennj@bak.rr.com

Skip Wallace
District Sales Manager
Directional Drilling/Coring



INTEQ
6117 Schirra Court
Bakersfield, California 93313
Direct 661-282-2333 • Cell 661-599-1875
Office 661-834-9654 • Fax 661-834-2450
E-mail: skip.wallace@inteq.com
www.bakerhughesdirect.com



Robert Allen Nesbit

1924 - 2009

Bob died unexpectedly on April 23, 2009, after urgent surgery at San Joaquin Hospital. Born in southern California to Robert and Edith Nesbit, he was raised on a citrus ranch in Cucamonga along with his sister, Janice. He attended Chaffey High School in Ontario and Stanford University where he met Mary. Following a geology assignment in South America, he and Mary were married in Park Ridge, Illinois on September 11, 1947. Bob and Mary then lived in Columbia and Venezuela. Bob earned his Master's Degree at Oregon State. During Bob's career, they moved often in California and to Texas, and welcomed two sons, Robert William and John Frederic. Bob retired from Gulf Oil Company during their third stay in Bakersfield where they wished to remain. Bob thoroughly enjoyed his profession, especially field work. He was active in tennis and golf, enjoyed yard work, and was a non-stop reader. Bob had a firm sense of moral standards and responsibility. His friendly smile and sense of humor attracted many friends. He belonged to Stockdale Country Club and Westminster Presbyterian Church. Bob will be greatly missed by his wife and sons, and his grandson, William Frazier Nesbit.



Basil Robert "Swiss" Holmes

January 2, 1919 - April 24, 2009

On April 24, 2009, Swiss went home to be with both his Lord and his loving wife, Waltraud. He was a fourth-generation Sacramentan, born on January 2, 1919, to Basil M. and Josephine A. (Marty) Holmes. He attended David Lubin, Kit Carson, and Sacramento High, and graduated from Sacramento Jr. College in 1939. He is survived by his children Heidi Goodman and Bruce Holmes; grandson Todd Goodman; daughter-in-law Barbara Steinberg; extended family David Bull and Rebecca Stone. His presence will be missed by Da Boyz, the Gas Patch gang, and his loving caregivers Lilly, Mikke, and Stella, and his cat Putzi, along with numerous friends and family here and abroad.

J.M. "BUZZ" DELANO, JR.
Consultant

Cell (661) 747-0337
Office (661) 832-5229
Fax (661) 832-5229
Email: BuzzBake@aol.com

Delano Petrophysical
Consulting Services

816 Ferdinand Ct.
Bakersfield, California 93309

Dipmeter Analysis
Tape Conversion Editing
Expert Petrophysical Analysis
Wellsite Supervision

DAVID B. DEL MAR

Consulting Registered Geologist
California Registered Geologist #634

Development - Thermal EOR - Property Reviews

2027 Park Drive
Los Angeles, CA 90026

H (323) 664-3358
dbdelmar@earthlink.net

Higher Standards



Weatherford LABORATORIES

At Weatherford Laboratories, we hold fast to Higher Standards. Our purpose is to continually push past conventional solutions to find new and better ways to optimize oil and gas production.

■ By integrating seven entrepreneurial companies, we bring unsurpassed innovation to the industry. Our accomplishments include 50 new technologies, 45 original products, 35 industry awards, and 13 registered patents. Among our ranks are several luminaries of the industry, as well as scores of respected scientists who have authored hundreds of technical papers. ■ With 38 laboratories around the globe, our team raises the bar for wellsite sampling, core management services, geochemical analyses and evaluation of unconventional reservoirs.

At Weatherford Laboratories, we expect more from ourselves so you can expect more from us.

Weatherfordlabs.com

7
DYNAMIC
COMPANIES

50
NEW
TECHNOLOGIES

38
WORLDWIDE
LABORATORIES

CORPORATE OFFICES

ACS Laboratories Pty Ltd
Brisbane, Australia

OMNI Laboratories
Houston, Texas USA

ResLab Reservoir Laboratories
Trondheim, Norway

Humble Geochemical Services
Houston, Texas USA

TICORA Geosciences
Denver, Colorado USA

Baseline Resolution, Inc.
Houston, Texas USA

Hycal Energy Research Laboratories
Calgary, Alberta, Canada



PACIFIC SECTION

P.O. BOX 1072

BAKERSFIELD, CALIFORNIA 93302

American Association of Petroleum Geologists

OFFICERS

2008-2009

President

DON CLARKE

Consultant

5838 Graywood Ave.
Lakewood, CA 90712-1128
(562) 867-7888
labasindon@gmail.com

President Elect

SCOTT HECTOR

Hobby Energy

2500 Airport Rd.
Rio Vista, CA 94571
(707) 374-5123 x 225
scott@hobbyenergy.com

Vice-President

DON MILLER

Vintage Production California, LLC
9600 Ming Ave, Suite 300
Bakersfield, CA 93311
Office (661) 869-8005
Donald_miller@oxy.com

Secretary

KATHY MILLER

Chevron

9525 Camino Media
Bakersfield, CA 93311
Office (661) 654-7212
kathymiller@chevron.com

Treasurers

DONNA THOMPSON

San Joaquin Energy Consultants
1400 Easton Drive, Suite 133
Bakersfield, CA 93309
Office: (661) 395-3029
sjec@sbglobal.net

CYNTHIA HUGGINS

Aera Energy LLC

10000 Ming Ave.
Bakersfield, CA 93311
Office: (661) 665-5074
cahuggins@aeraenergy.com

Past President

JON KUESPERT

BreitBurn Energy

515 So. Flower St, #4800
Los Angeles, CA 90071
Office (213) 225-5900 x224
jkuespert@breitburn.com

AAPG Advisory Council

JOHN MINCH

1100 Mission Canyon Road
Santa Barbara, CA 93105
Office: (805) 682-4711, x137
jmainc@earthlink.net

Newsletter Editor

KAREN BLAKE

Hobby Energy

PO Box 669
Rio Vista, CA 94571
Office (707) 374-5123
keb933@aol.com

Publications Chair

LARRY KNAUER

Chevron

P. O. Box 1392
Bakersfield, CA 93302
Office: (661) 392-2471
larryknauer@chevron.com

Membership Secretary

BRIAN CHURCH

Chevron, USA

PO Box 1392
Bakersfield, CA 93302
Office (661)
brianchurch@chevron.com

May 1, 2009

Dr. Scott Tinker
Director, Bureau of Economic Geology
Bureau of Economic Geology
University of Texas at Austin
University Station, Box X
Austin, Texas 78713-8924

Dear Dr. Tinker,

The Pacific Section and I send you congratulations on the 100th Birthday of the Texas Bureau of Economic Geology. As the oldest research unit of the University of Texas at Austin the Bureau curates the largest volume of subsurface core and cuttings in the United States. The Bureau also has a library of nearly one million well records. It is also an outstanding seat of research and public outreach. The BEG has served Texas and the rest of the country admirably through its 100 years. Our sincere congratulations and thanks go out to the Bureau of Economic Geology on this one hundredth year.

Sincerely,

Don Clarke, President, Pacific Section AAPG

WWW.PSAAPG.ORG



PACIFIC SECTION

P.O. BOX 1072

BAKERSFIELD, CALIFORNIA 93302

American Association of Petroleum Geologists

OFFICERS 2008-2009

President

DON CLARKE

Consultant
5838 Graywood Ave.
Lakewood, CA 90712-1128
(562) 867-7888
labasindon@gmail.com

President Elect

SCOTT HECTOR

Hobby Energy
2500 Airport Rd.
Rio Vista, CA 94571
(707) 374-5123 x 225
scott@hobbyenergy.com

Vice-President

DON MILLER

Vintage Production California, LLC
9600 Ming Ave, Suite 300
Bakersfield, CA 93311
Office (661) 869-8005
Donald_miller@oxy.com

Secretary

KATHY MILLER

Chevron
9525 Camino Media
Bakersfield, CA 93311
Office (661) 654-7212
kathymiller@chevron.com

Treasurers

DONNA THOMPSON

San Joaquin Energy Consultants
1400 Easton Drive, Suite 133
Bakersfield, CA 93309
Office: (661) 395-3029
sjec@sbcglobal.net

CYNTHIA HUGGINS

Aera Energy LLC
10000 Ming Ave.
Bakersfield, CA 93311
Office: (661) 665-5074
cahuggins@aeraenergy.com

Past President

JON KUESPERT

BreitBurn Energy
515 So. Flower St, #4800
Los Angeles, CA 90071
Office (213) 225-5900 x224
jkuespert@breitburn.com

AAPG Advisory Council

JOHN MINCH

1100 Mission Canyon Road
Santa Barbara, CA 93105
Office: (805) 682-4711, x137
jmainc@earthlink.net

Newsletter Editor

KAREN BLAKE

Hobby Energy
PO Box 669
Rio Vista, CA 94571
Office (707) 374-5123
keb933@gmail.com

Publications Chair

LARRY KNAUER

Chevron
P. O. Box 1392
Bakersfield, CA 93302
Office: (661) 392-2471
larryknauer@chevron.com

Membership Secretary

BRIAN CHURCH

Chevron, USA
PO Box 1392
Bakersfield, CA 93302
Office (661)
BRIANCHURCH@CHEVRON.COM

May 1, 2009

Bob Jacobi, President, Eastern Section, AAPG
Nornew, Inc.
1412 Sweet Home Rd.
Suite 12
Amherst, NY 14228

Dear Mr. Jacobi,

The Pacific Section, AAPG sends you and the Eastern Section, AAPG greetings and congratulations on the sesquicentennial of the completion of Drake's Well in Titusville, Pennsylvania in August of 1859. This was a significant event that marked the beginning of the oil industry that we know today. Oil Creek saw the humble beginnings of the oil industry transform from a number of skimmers to the drilled oil well. Drake's brilliance of driving a pipe into the ground and drilling through it enabled those who followed to complete wells without risk of hole collapse. The idea of riparian exploration (drill a valley) evolved gradually into the high technology exploration methods of today. The visitor to western Pennsylvania today is treated to a beautiful countryside. The scars of old have healed and most days the fly fishermen, rather than oil men, are seen in Oil Creek. The area is still productive after 150 years which testifies to the abundance of the earth.

We send our regards and thank the Eastern Section, AAPG for their contribution to the field of petroleum geology and to the prosperity of the United States.

Most sincerely,

Don Clarke, President, Pacific Section, AAPG

WWW.PSAAPG.ORG



Special Core Analysis In Bakersfield

Core Lab
RESERVOIR OPTIMIZATION

Laboratory Services Include:

- Capillary Pressure • Relative Permeability • Formation Damage Studies • Electrical Analyses • Environmental Studies

Core Laboratories, Inc • 3437 Landco Drive • Bakersfield, CA 93308
Tel: (661) 325-5657 • Fax: (661) 325-5808

Alaska Geological Society

www.alaskageology.org

P. O. Box 101288
Anchorage, AK 99510

Contact: Jim Clough
907.451.5030



Luncheon meetings are held monthly September through May, usually on the third Thursday of the month, at the BP Energy Center (1014 Energy Court) from 11:30 a.m. to 1:00 p.m. The hot lunch cost is \$20 for members with reservations; \$22 for non-members with reservations; and \$25 without reservations. The box lunch cost is \$13 for members with reservations; \$15 for non-members with reservations; and \$18 without reservations. For reservations, call the AGS reservation voice mail at 907-258-9059 or contact David Hite at hiteconsult@acsalaska.net by noon on Monday before the meeting.

President:	Jim Clough	907.451.5030	Jim.clough at alaska.gov	DNR/DOG
President-Elect:	Tom Homza	907.770.3701	Shell Oil	
Vice-President:	Tom Morahan	907.230.1672	PRA	
Secretary:	Ken Helms	907.269.8673	Ken.helms at alaska.gov	DNR/DOG
Treasurer:	David Shafer	907.263.7864	Chevron	
Past-President:	Art Banet	907.334.8241	Arthur.banet at mms.gov	BLM

Coast Geological Society

www.coastgeologicalsociety.org

P. O. Box 3055
Ventura, CA 93006

Contact: Bob Ballog
805.498.6294



Dinner meetings are held monthly September through June, usually on the third Tuesday of the month, at Biedermann Hall at Sacred Heart Church - 10800 Henderson Road in Ventura. Social hour starts at 6:00 p.m., dinner is served at 7:00 p.m., and the talk starts at 8:00 p.m. The cost of dinner is \$18 (with reservations), \$25 (without reservations), or \$10 (students and K-12 teachers); the talk is free. For reservations, please email Christine White at cwhite@dcorllc.com or make reservations online at www.coastgeologicalsociety.org. Reservations should be made by 4:00 p.m. on Friday before the meeting.

President:	David Panaro	805.654.2327	president@coastgeologicalsociety.org
Past President:	Bob Ballog	805.498.6294	pastpresident@coastgeologicalsociety.org
Vice President:	Mike Nelson	805.201.2088	vicepresident@coastgeologicalsociety.org
Secretary:	Stephanie Lapeyre-Montrose	805.292.8035	secretary@coastgeologicalsociety.org
Treasurer:	Leni Field	805.497.0569	treasurer@coastgeologicalsociety.org

Los Angeles Basin Geological Society

www.labgs.org

515 So. Flower Street, Ste 4800
Los Angeles, CA 90071

Contact: Jon Kuespert
213.225.5900 x224



Luncheon meetings are held monthly September and October; and January through June, usually on the fourth Thursday of the month, in the Monarch Room at The Grand at Willow Street Conference Centre (4101 E. Willow Street) in Long Beach. Lunch is served at 11:30 a.m., and the talk starts at 12:15 p.m. The cost is \$20 (with reservations), \$25 (without reservations), or \$0 (students are covered by Halliburton and Schlumberger). Reservations can be made online at www.labgs.org or by contacting Marieke Gaudet at 562.624.3364 or marieke_gaudet@oxy.com. Reservations must be made prior to Tuesday before the meeting.

President:	Jon Kuespert	213.225.5900 x224	jkuespert@breitburn.com
Program Chair:	Bill Long	213.225.5900 x205	william.long@breitburn.com
Treasurer:	Jean Kulla	949.500.3095	k2mobile@MSN.com
Secretary/webmaster:	Marieke Gaudet	562.624.3364	Marieke_Gaudet@oxy.com

Northern California Geological Society

www.ncgeolsoc.org

9 Bramblewood Court
Danville, CA 94506-1130

Contact: Barb Matz
Barbara.Matz@shawgrp.com



Evening meetings are held monthly September through May, usually on the last Wednesday of the month, at the Masonic Center (9 Altarinda Road) in Orinda. Social hour starts at 6:30 p.m., and the talk starts at 7:00 p.m. (no dinner). For reservations, leave your name and phone number at (925) 424-3669, or at danday94@pacbell.net before the meeting. Cost is \$5 per regular member; \$1 per student member; and \$1 per K-12 teachers (new!).

Northwest Energy Association
dlgellar@msn.com

P. O. Box 6679
Portland, OR 97228-6679

Contact: James Jackson
503-771-3887



Luncheon meetings are held monthly September through May, usually on the second Friday of the month, at the Multnomah Athletic Club (1849 SW. Salmon Street) in Portland. Meeting time is at 7:30 - 9:00 am. The cost is \$15. For information or reservations, contact Shelley Thomas at 503-848-2947 or Treck Cardwell at 503-226-4211 ext. 4681.

President: Tim Blackwood tblackwood@pacificgeotechnicalllc.com

Sacramento Petroleum Association

P. O. Box 571
Sacramento, CA 95812-0571

Contact: Rick Blake
925.422.9910



Luncheon meetings are held monthly January through November, on the third Wednesday of the month. Location to be announced. The meetings starts at noon. The cost is \$20. For information or reservations, contact Pam Ceccarelli at 916-322-1110 or pceccare@consrv.ca.gov.

President:	Rick Blake	blake2@ltnl.gov
Vice-President:	Marc Brennen	M.brennen@Termasource.com
Secretary	Pam Ceccarelli	Pam.Ceccarelli@conservation.ca.gov
Treasurer	Pam Ceccarelli	Pam.Ceccarelli@conservation.ca.gov
Editor	Pam Ceccarelli	Pam.Ceccarelli@conservation.ca.gov

San Joaquin Geological Society

www.sjgs.com

P. O. Box 1056
Bakersfield, CA 93302

Contact: Kurt Neher
kurt_neher@oxy.com



We have dinner meetings on the second Tuesday of the month at the American Legion Hall at 2020 "H Street" in Bakersfield. There is an icebreaker at 6:00 pm, dinner at 7:00 pm, and a talk at 8:00 pm. Dinner is \$20.00 for members with reservations and \$25.00 for nonmembers, \$25.00 for members without reservations and \$30.00 for nonmembers without, and the talks are free.

President:	Kurt Neher	kurt_neher@oxy.com
President-Elect:	Kurt Johnson	kurt_johnson@oxy.com
Vice-President:	Jack Grippi	JGrippi@aeraenergy.com
Secretary:	Anne Draucker	AnneDraucker@chevron.com
Treasurer:	Kelley Blackwood	K.Blackwood@chevron.com

Advertising Rates

Members	Single Issue	Year (6 issues)
Full Page	\$400.00	\$1600.00
Half Page	\$250.00	\$1050.00
Quarter Page	\$150.00	\$650.00
Business Card		\$250.00

Societies Free Advertising

Convention Societies	Unlimited Space 1/4 Page	PSAAPG Newsletter AAPG Explorer
----------------------	-----------------------------	------------------------------------

Newsletter Deadline

July • August Issue

June 20th

- Images (graphics, photos, and scans) must be at least 300 dpi resolution. Text should be scanned at least 600 dpi.
- Scanned photos, illustrations (line art) or logos must be scanned at 300 dpi minimum and saved as a tiff or eps.
- Avoid clip-art and images from the internet. These images are low-resolution (72 dpi).



Stanford Petroleum Investments Funds

Photo courtesy of Andreas Mulch

Investing in Energy to Support Education and Research



“Today’s computational capacity and the availability of large volumes of data from ground-based observations and satellites offer new opportunities for understanding how the Earth system works and how human activities interact with Earth processes. The Sanford Center for Computational Earth and Environmental Science will enable the development of sophisticated models to address questions about energy and freshwater resources, natural hazards, climate change, and other global issues.”

Jerry M. Harris, Director, Center for Computational Earth and Environmental Science, Professor and Former Chair, Department of Geophysics, Stanford University; Director, Stanford Wave Physics Laboratory; Past Distinguished Lecturer, Society of Exploration Geophysicists, American Association of Petroleum Geologists, and Society of Petroleum Engineers.

The alumni-managed Stanford Petroleum Investments Funds own, manage, and acquire producing oil and gas royalties and other energy investments. Income from these investments provides essential discretionary funding in support of energy and environmental education and research and other programs of the Stanford School of Earth Sciences. The Petroleum Investments Funds provided seed funding to help launch the Stanford Center for Computational Earth and Environmental Science.

If you would like to sell or donate producing oil and gas royalties, or learn more, visit <http://earthsci.stanford.edu/support/pif> or call or email David Gordon, Associate Dean, Stanford School of Earth Sciences, at (650) 723-9777 or dsgordon@stanford.edu to see how you can help.

