

# Pacific Petroleum Geologist

NEWSLETTER



Pacific Section • American Association of Petroleum Geologists

July & August • 2007

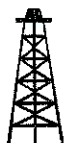
## Los Angeles 3D Survey Leads to Deep Drilling Page 7



Pacific Section AAPG  
P. O. Box 1072  
Bakersfield, CA 93302

PRESORTED  
STANDARD  
U.S. POSTAGE  
PAID  
BAKERSFIELD, CA  
PERMIT NO. 1163

# Pacific Petroleum Geologist NEWSLETTER



Pacific Section • American Association of Petroleum Geologists

July & August • 2007

## 2006 - 2007 Officers

<b>President</b>	Mike Wracher 805.745.2272 mwracher@venocoinc.com
<b>President-Elect</b>	Jonathan Kuespert 213.225.5900 x224 jkuespert@breitburn.com
<b>Vice President</b>	Michael Ponek 661.654.7342 mponek@chevron.com
<b>Secretary</b>	Randall Stephenson 661.869.8043 Randall_Stephenson@oxy.com
<b>Treasurer</b>	Melissa Kolb 661.763.6481 mmkolb@bak.rr.com
<b>Past President</b>	Joan Barminski 805.389.7509 joan.barminski@mms.gov

## Staff

<b>Editor</b>	Karen Blake 661.395.5214 kblake@plainsxp.com
<b>Advertising</b>	Michael Quilliam 661.395.5443 mquilliam@plainsxp.com
<b>Geological Coordinator</b>	Frank Cressy 661.323.6828 fcressy@prodigy.net
<b>Website Coordinator</b>	Tim Stephenson 661.395.5520 tstephenson@plainsxp.com

## Membership

<b>Membership Chair</b>	Mark Yarlot Mark_Yarlot@oxy.com
-------------------------	------------------------------------

## Publications

<b>Publications Chair</b>	Larry Knauer 661.392.2471 larryknauer@chevron.com
---------------------------	---

## Every Issue

- 3 Message from the President - M. Wracher
- 4 Message from the Editor - K. Blake
- 5 Pacific Section AAPG - Election Results
- 12 Member Society News

## Features

- 7 Technical Article

### Los Angeles 3D Survey Leads to Deep Drilling

Dalton Lockman  
Plains Exploration & Production Co.

- 11 Lease Sale Announcements

# Message from the President

## Mike Wracher



PSAAPG executive committee include revamping both the Newsletter, and Website, creating a new Editor-in-Chief position, and realigning the Treasurer's duties to make this position more tenable.

To all those people that helped move the year forward during board meetings, committee meetings, national AAPG and elsewhere, thank you. People like John Minch, Mike Ponek, Jon Kuespert, Melissa Kolb, Randy Stephenson, Karen Blake, Don Clarke, John Armentrout, Mel Erskine, Mark Yarlot, Adam Mahan, Muriel Norton, and Sandra Szymanski. A final special thanks to all those "old hands" out there who have been helping Presidents over the years. These include Larry Knauer, Bob Lindblom, Kay Pitts, Joan Barminski, Mark Wilson, Tom Hopps and Steve Sanford. These folks helped in a myriad of ways behind the scenes to make sure I was doing what was needed.

I was talking with Reinhard Suchsland, a past President of PSAAPG recently on the subject of the Pacific Section. He asked me "how has the year gone?" I blurted out – it's been darn busy and I wish I could have spent more time on the subject. Reinhard being one of the "elder statesmen" of our organization took me by the hand (over the phone) and tried to talk some sense into me. You know, he said, if you want something done give it to someone who's busy. We've all heard this before but he's right. Almost to a person everyone has been maxed out by their non-PSAAPG duties, yet somehow we got a lot done. All the people that I have interacted with this year have been a pleasure and the work that was accomplished by them, outstanding. I am very satisfied with the year and hope that we have nudged the organization forward just a bit and helped to satisfy our membership. Of course, we dropped a few balls, but at least we saw where they fell and are comforted by the fact that there's a new crop of overachievers ready to help.

Without question the greatest success for the Pacific Section during the past year was hosting the National Convention. It was a fantastic event, whose effects will be with us for years to come. A good sign for all of us hoping to retire some day was the large number of students on hand. A heart felt thanks to Dalton Lockman, Kay Pitts and all those associated with the convention for working so hard to make this a success. Other notable accomplishments for this year's

At our August meeting of the PSAAPG executive committee I'll be handing the gavel on to Jon Kuespert, who will succeed me as section President for 2007-2008. As I wish him and the incoming executive committee all my best for a smooth and successful 2007-2008, It will be nice to think about the past year and watch the new one unfold.

Thanks  
Mike



RESERVOIR CHARACTERIZATION  
GEOLOGY  
PETROPHYSICS  
DATABASE MANAGEMENT  
DIGITIZING & SCANNING

**EarthQuest Technical Services, LLC**

*David R. Walter*

drwalter@eqtservices.com  
www.eqtservices.com

2201 'F' Street  
Bakersfield, CA 93301  
661-321-3136



## Message from the Editor

Karen Blake

We revamped the newsletter and website - with some more work to go. The Editor position is now, thanks to the membership, an elected position on the Executive Committee.

What's next?

The 2007-2008 year will need an appointed Editor when the new board convenes. If you have an interest, this is the time to make contact with a Board member. I will work with the new Editor to ensure a smooth transition and continue to improve the content on the website.

What a year!



**PacSeis, Inc.**  
Pacific Seismic Company

**The Leader in Sub-Surface Information**

### Resources that Deliver the Difference

- Seismic available for immediate license
- Over 500,000 line miles of 2D & 3D data located in domestic United States (onshore & offshore)

### Exclusive Opportunity 2007

#### Recently acquired seismic databases by Pacific Seismic Co.

- Chevron USA California, OXY USA Nationwide (including Arco & Enron)
- Santa Fe Energy, TXO, Cities Services Oil & Gas Nationwide
- Southern Pacific, PG&E / NGC, SOHIO
- Seventeen Newly Acquired 3D's Covering Northern & Southern California

### 3D Seismic Acquisition Management

- J. Dwight Melancon – [Dwight@dimensional.com](mailto:Dwight@dimensional.com)

## Pacific Seismic Company

Your full-service Seismic Brokerage & Acquisition Company

Bakersfield  
Tel: 661.322.1171

Denver  
Fax: 661.322.1181

Tulsa

Houston  
Web Site: [PACSEIS.com](http://PACSEIS.com)

[curtisconway@arrival.net](mailto:curtisconway@arrival.net)

[kathysmith@arrival.net](mailto:kathysmith@arrival.net)

## President Elect

Bryan Bell      Core Lab  
Don Clarke      Consultant      Won

## Foundation Trustee

Mark Wilson      Consultant      Won  
Ran unopposed

## Vice President

Jonathan Lange      Chevron  
Karen Blake      PXP      Won

## PSAAPG Constitution and Bylaws

Create the office of Editor in Chief as an elected position with a 2 year term - Passed

## Secretary

Bryan Jolley      Aera  
Don Miller      Vintage      Won

We had 161 ballots returned out of about 450 mailed out. A 36% return is very good.

## Treasurer

Michelle Glascock      Aera  
Cynthia Huggins      Vintage      Won

## Special Core Analysis In Bakersfield



**Core Lab**  
RESERVOIR OPTIMIZATION

### Laboratory Services Include:

- Capillary Pressure • Relative Permeability • Formation Damage Studies • Electrical Analyses • Environmental Studies

Core Laboratories, Inc • 3437 Landco Drive • Bakersfield, CA 93308  
Tel: (661) 325-5657 • Fax: (661) 325-5808

Early  
SJGS  
foursome  
lines up a  
putt



## San Joaquin Geological Society

Society of Exploration Geophysicists

### Annual Fall Classic Golf Scramble and Barbecue Friday, September 7, 2007

*Golf Tournament at Kern River Golf Course (Near Lake Ming)*

*Family BBQ and Raffle at the Kern County Museum*  
*Onsite BBQ Featuring Tri Tip and all the Fixin's*

- Happy Hour at 5:00 PM • Dinner at 6:00 PM
- Adults \$18.00 • Students \$10.00 • Children \$5.00

**Please RSVP by Tuesday, September 4, 4:00 PM (For BBQ) -Help the Planners**  
**(BBQ is NOT prepaid, you may pay at the event)**

**BBQ RSVP & Golf Questions:** Curtis Conway ([curtisconway@arrival.net](mailto:curtisconway@arrival.net)), Brian Rangel  
([PacSeis@arrival.net](mailto:PacSeis@arrival.net)) or Katy Smith ([KathySmith@arrival.net](mailto:KathySmith@arrival.net)) Phone: (661) 322-1171

----- Cut on Line and Mail in Golf Reservation -----

#### **Golf Tournament**

Kern River Golf Course  
8:00 AM - Shotgun Start

**\$65.00/ Person**

Includes:

Green Fee, Cart, Lunch,  
Drinks, Polo Shirt, and  
Prizes

**Reservation Deadline**  
**August 24, 2007**

Registered Players	Golf \$	BBQ\$	Shirt Size
Golfer 1 _____	_____	_____	S M L XL XXL
Golfer 2 _____	_____	_____	S M L XL XXL
Golfer 3 _____	_____	_____	S M L XL XXL
Golfer 4 _____	_____	_____	S M L XL XXL
<b>Total \$</b> _____	_____	_____	
Contact email: _____	Contact Phone: _____		

**Return Form and Checks to: Curtis Conway c/o SJGS, P.O. Box 1056, Bakersfield, CA 93302**

# Los Angeles 3D Survey Leads to Deep Drilling

DALTON LOCKMAN  
Plains Exploration & Production Co.  
Los Angeles, USA

Most 3D seismic surveys are designed and shot with little concern for movie studio lots, 10-lane freeways, or privacy fences. But when Plains Exploration & Production Co. (PXP) decided to acquire seismic data over the 81-year-old Inglewood Field—the first onshore 3D survey ever conducted in the Los Angeles Basin—the company knew it would be anything but a typical seismic shoot. The field is located in the Baldwin Hills area in the heart of one of the nation's largest and most populous metropolitan areas (Figure 1). Oil production was there long before the buildings, streetlights and asphalt that have since crowded in and around the field. It is now a few square miles of pump jacks and stock tanks surrounded by urban sprawl. Downtown Los Angeles is only six miles to the east, and Los Angeles International Airport is a short drive south.

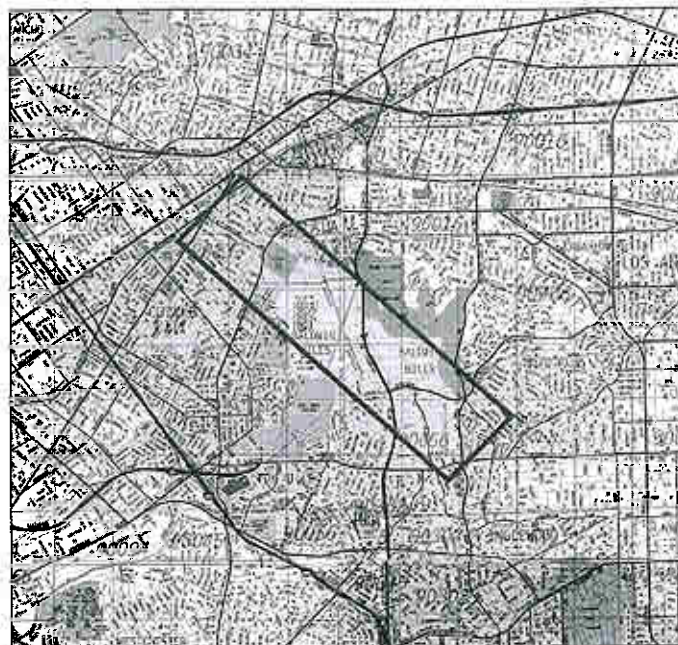


Figure 1. Inglewood Field, Los Angeles Basin.

LA is the place of movie stars and limousines, not seismic crews and vibrator trucks. But when PXP evaluated ways to add value to its 100-percent-owned Inglewood Field, 3D seismic emerged at the top of the list. So in late 2002, the company began planning a 21.3 square-mile 3D survey that stretched over parts of three municipalities, Los

Angeles, Inglewood and Culver City, as well as portions of unincorporated Los Angeles County. In addition, the survey area fell inside the jurisdiction of several state and local regulatory agencies. Within the survey area was a major motion picture studio, a college, two large cemeteries, interstate freeways 10 and 405, condominium complexes, a maze of traffic-congested streets, and thousands of residences and businesses.

J.M. "BUZZ" DELANO, JR.  
Consultant

Cell (661) 747-0337  
Office (661) 832-5229  
Fax (661) 832-5229  
Email: BuzzBake@aol.com

**Delano Petrophysical**  
Consulting Services

816 Ferdinand Ct.  
Bakersfield, California 93309

Dipmeter Analysis  
Tape Conversion Editing  
Expert Petrophysical Analysis  
Wellsite Supervision

Although the Inglewood 3D survey field operation was a major undertaking that was not without numerous technical and cultural challenges, the end results have been very favorable. After acquiring and processing the 3D data, PXP initiated a drilling program in 2004 targeting largely untested deeper Miocene-aged turbidite sands below the shallow main productive intervals. The first of those wells came on line in the first quarter of 2004 averaging an initial daily rate of 800 barrels of oil equivalent. Since then, two dozen additional deep wells have been drilled with a 100 percent success rate, and placed on production making a combined 2500-3000 barrels of oil a day.

Inglewood Field history. The 1200-acre Inglewood Field was discovered in 1924 by Standard Oil of California (Chevron). The primary development focus was on the Vickers and Rindge zones at vertical depths of less than 4000 ft. These distal turbidite reservoirs are water and gravity drainage driven, with crude oil typically ranging between 14 and 29 degrees API gravity. Waterflooding had been initiated in 1954 targeting the Vickers and Rindge zones. At the time of the 3D survey, 1400 wells had been drilled in the field, with 338

active producing wells and 142 injectors. Before kicking off the deep drilling program, the field had produced 350 million barrels of oil cumulative, with 90 percent coming from the Vickers and Rindge.

Stocker Resources, a predecessor company to PXP, acquired the field in 1990. Oil and gas production had been on a gradual decline throughout the 1980s, but production rates were improved after Stocker assumed ownership and applied its ingenuity and expertise on production engineering, facilities issues, and hydrocarbon saturation mapping. Subsequent new well drilling indicated that geologic structure was a dominant factor in accurately identifying potential areas in the reservoir with untapped reserves.

In early 2001, PXP undertook a significant effort to resolve the field's structural complexity, including extensive reservoir characterization and 3D geologic modeling to analyze structure and stratigraphy, fault geometries, sealing mechanisms, Vickers/Rindge waterflood conformance, and remaining hydrocarbon potential. Despite the field's age, it was apparent that it held considerable oil potential. In fact, the 350 million barrels of oil the property had produced were estimated to be only 35 percent of the original oil in place.


However, 3D seismic was needed to delineate prospective areas within the complex geology where additional hydrocarbons could be developed. Although a few 2D lines had been shot in the field, 3D data had never been acquired in the LA Basin, except for an offshore survey near the THUMS islands project in Long Beach Harbor. As originally conceived, the Inglewood Field survey was designed to image faulting and compartmentalization in the shallow Vickers and Rindge zones, but the design was ultimately revised to include imaging underlying zones at vertical depths to 10 000 ft.

Romance in the deep. The field contains more than 5000 ft of stacked pay zones in medium- to fine-grained sandstones, siltstones and shales. The geologic structure is a plunging anticline with complex faulting, with most faults acting

# EPOCH FORMATION RESERVOIR LITHOLOGY THICKNESS DESCRIPTION

PLEISTOCENE	SAN PEDRO				0' - 200'	Recent Sediments	
	INGLEWOOD				150' - 300'	Unconsolidated sands and silt	
	UPPER PLEISTOCENE	PICO	Upper			150' - 300'	Unconsolidated sands and silt
Middle			Investment		200' - 600'	Unconsolidated discontinuous sand lenses	
Lower			Vickers		1500' - 1700'	Thin Bedded unconsolidated sands, silt, and shales	
LOWER PLEISTOCENE	REPETTO	Upper		Rindge		900' - 1000'	Thin Bedded sandstone, silt and shale
		Middle		U Rubel		250' - 300'	Thick bedded poorly cemented sandstone with thin silt and shale
				L Rubel		600' - 700'	Thick bedded poorly cemented sandstone with thin silt and shale
		Lower		U Moynier		300' - 400'	Cemented interbeds of sandstone, silt and shale
				L Moynier		600' - 700'	Cemented interbeds of sandstone, silt and shale
UPPER MIOCENE	PUENTE			Bradna		700' - 1800'	Cemented interbeds of sandstone, silt and shale
MIDDLE MIOCENE			City of Iwood		0' - 250'	Crk sand and siltstone	
			Nodular Sh		150' - 175'	Siltstone Shale and siltstone	
		Sentous		200' - 1000'	Cemented interbeds of sandstone, silt and shale		
	TOPANGA			Topanga		1500'	Fine grained sandstone conglomerate, silt and shales

Figure 2. Inglewood Field stratigraphic column



**Providing Confidence At Your Wellsite.**

Wellsite geologists and mudlogging from the Arctic to the Tropics

**California Expertise:**  
Over 600 Horizontals Steered

**Spanish Lookout, Belize:**  
Another Successful Discovery

Doug Milham, President  
California Office: 1.805.733.0972  
Belize Office: +501.621.2790  
Alaska Office: 1.907.563.7002  
Bernie Leas, Alaska Operations Manager  
[www.horizon-well-logging.com](http://www.horizon-well-logging.com)

**HORIZON**  
WELL LOGGING, INC.

as seals, creating petroleum traps. Figure 2 shows a stratigraphic column of the field. For depth reference, the bottom of the Rindge is at  $\pm 4000$  ft, with the bottom of the Sentous at  $\pm 10000$  ft.

In the late 1930s and early 1940s, Tidewater Oil (Texaco) successfully drilled 16 deep wells targeting the Sentous zone on a 35-acre lease it owned within the Inglewood Field area. In the 1960s Standard Oil exploited the Moynier zone and conducted a pilot waterflood within the Moynier. Outside of that, however, little effort had been invested historically in testing structures below 6000 ft, as indicated by Figure 3, a 3D rendering of the locations of well bores drilled prior to 2003.

Obviously, drilling over the years had concentrated on the shallow Vickers (1500-1700 ft thick) and Rindge (900-1000 ft thick) reservoirs, but the deep zones provided the romance for the 3D acquisition project. PXP hoped to use the 3D data to not only increase Vickers/Rindge production, but also add reserves and a field development component from the deeper intervals. The green layer in Figure 3, representing the Sentous (200-1000 ft thick), is the primary target for the current deep drilling program.

The first step was conducting a 3D feasibility study, including shooting a new 2D test line in the fall of 2002. The objectives were to determine whether 3D would even work from a geoscientific perspective considering all the topographic factors and subsurface complexities; assess the relative cost-versus-benefit value of acquiring 3D data over the entire field; evaluate potential data quality, surface access and permitting problems; and test acquisition parameters to assist in planning and designing the full-field 3D survey.

Importantly, the feasibility study also provided a test case for resolving access and permitting issues-major concerns given the survey's location and number of governmental and regulatory agencies involved. Fortunately, the results not only indicated encouraging results for 3D data acquisition across the entire stratigraphic

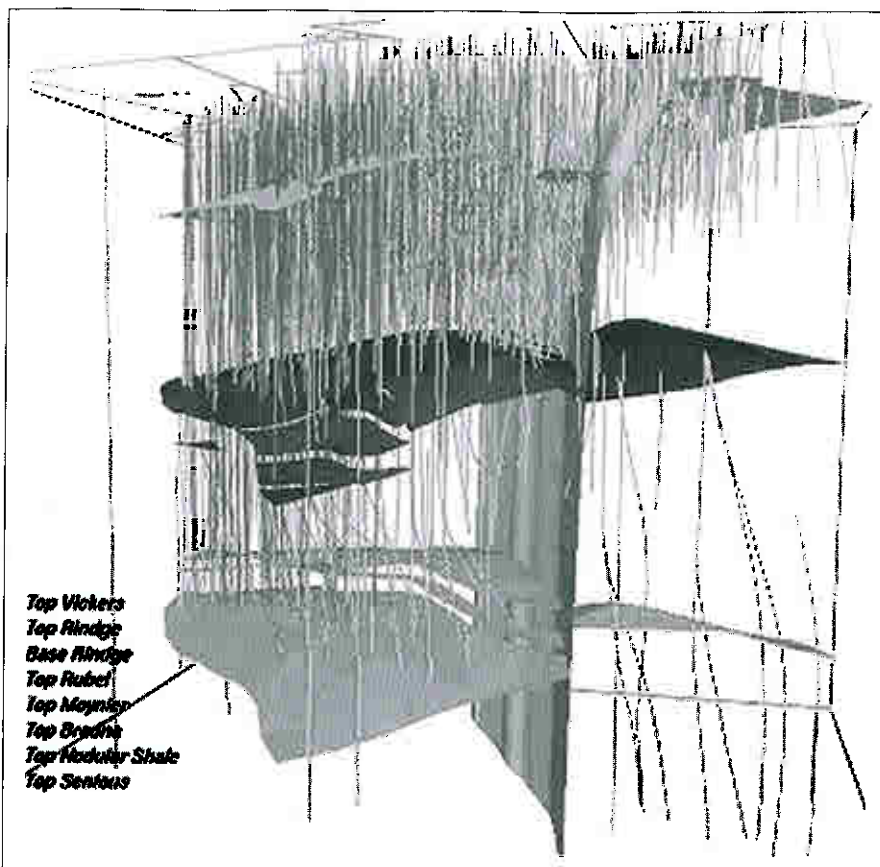


Figure 3. 3D view of existing well bores.

section-including the deep Moynier-Sentous zones-but also revealed that permits could be acquired within a reasonable time frame with planning and diligence.

So in late 2002, Trace Energy Services was contracted to acquire the 3D data. The survey design work was started immediately, with the permit process beginning in November and continuing through March 2003. The data were acquired in April and May 2003.

**Morgan Stanley**

**The Hopps Group**

**Lydia M. Hopps**

Associate Vice President

Financial Advisor

300 Esplanade Dr. 10th Floor

Oxnard, CA 93036

(805) 278-3609

Retirement planning

College savings plans

Asset allocation strategies

Comprehensive financial planning

Investments and services are offered through Morgan Stanley DW Inc., member SIPC. © 2006 Morgan Stanley NY CS 5449429 ANN-05 0906

When the feasibility study was initially proposed, the idea was to design the survey to obtain high-quality data in the shallow sections to assist in optimizing waterflooding, but PXP quickly realized the greatest value was in imaging both shallow and deep intervals to fully explore the field's remaining potential. Consequently, the project was redesigned as a "hybrid" 3D survey using different offset geometries to accurately image from the top of the Vickers all the way to the bottom of the Sentous. (End Part I)

*Joseph F. Elliott*

**Geophysical Consultant**

**Exploration Management**  
international / domestic  
interpretations  
synthetics  
modeling

Office: (949) 240-1505

26801 Lariat Circle  
San Juan Capistrano, CA 92675

**earthVision**  
by DYNAMIC GRAPHICS, INC.

*At the core of your workflow*

## Take a Look at the Power of Integrated 3D Vision



DYNAMIC GRAPHICS, INC.

1015 Atlantic Avenue  
Alameda, CA 94501  
www.dgi.com  
510-522-0700  
contact  
Roy Burlingame  
661-204-3016  
roy@dgi.com

### Integrated Vision

- ◆ efficient, simple data integration
- ◆ seamless software integration
  - ✓ geoscience, petrophysics, engineering
- ◆ promote the power of your 2D tools
  - ✓ quickly resolve complex structures
  - ✓ increase confidence of interpretations
  - ✓ reduce drilling risk
- ◆ visualize and quantify 3D reservoir properties
  - ✓ delineate "sweet" spots and bypassed pay
  - ✓ add confidence to economics and reserves

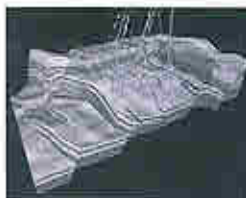
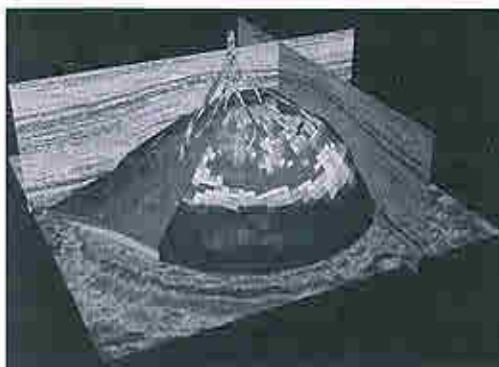
### Shared Vision

- ◆ multidisciplinary co-visualization
- ◆ demonstrate and clarify recommendations
- ◆ expand team knowledge and confidence
- ◆ enhance collaborative decision processes
- ◆ accelerate action & improve success rate

### Dynamic Vision

- ◆ horizontal well planning—on-site geosteering
- ◆ rapid model updates and iteration
- ◆ dynamic simulation integration

POWERFUL ◆ VERSATILE ◆ FAST ◆ AFFORDABLE



### Flexible

Linux®  
Windows®  
UNIX®

### Affordable On Your Terms

Purchase  
Lease  
Flex Rent



Dynamic Graphics is a registered trademark of Dynamic Graphics, Inc. (Marco Registered). earthVision is a registered trademark of Dynamic Graphics, Inc. (Marco Registered). The EarthVision name and logo are registered trademarks of Dynamic Graphics, Inc. (Marco Registered). WellFlow Manager is a registered trademark of Dynamic Graphics, Inc. All other trademarks belong to their respective holders.

### Advertising Rates

Members	Single issue	Year (6 issues)
Full Page	\$400.00	\$1600.00
Half Page	\$250.00	\$1050.00
Quarter Page	\$150.00	\$650.00
Business Card		\$250.00

### Societies Free Advertising

Conventions	Unlimited Space	PS-AAPG Newsletter
Societies	1/4 page	AAPG Explorer

### Newsletter Deadline

for

September - October Issue

August 20th

## BUREAU OF LAND MANAGEMENT

### NOTICE OF COMPETITIVE LEASE SALE OIL AND GAS CORRECTION

The Colorado State Office is offering competitively 115 parcels containing 86679.21 acres of Federal lands in the State of Colorado for oil and gas leasing.

[http://www.blm.gov/co/st/en/BLM\\_Programs/oilandgas/leasing.html](http://www.blm.gov/co/st/en/BLM_Programs/oilandgas/leasing.html)

**When:** The competitive oral sale will begin at 9 a.m. on August 09, 2007.

**Where:** The sale is held at the Bureau of Land Management, Colorado State Office, 2850 Youngfield Street, Lakewood, Colorado 80215. Parking is available.

Wyoming State Office  
5353 Yellowstone Road  
Cheyenne, Wyoming 82009  
P.O. Box 1828  
Cheyenne, Wyoming 82003-1828  
<http://www.wy.blm.gov>

**When:** The competitive sale will begin at 8:00 a.m. on Tuesday, August 7, 2007. The sale room and receiving room will open one hour earlier so you can register and get your bidding number.

**Where:** We will hold the sale at the Holiday Inn, Convention Center, 204 West Fox Farm Road (I-80 and US85), Cheyenne, Wyoming.

**Everett Stevenson**  
Operations Coring Coordinator



**INTEQ** (Formerly Christensen Coring)

6117 Schirra Court  
Bakersfield, California 93313  
Tel: 661-834-9654, 800-366-9654  
Fax: 661-834-2450  
Pgr: 661-321-7156  
E-Mail: [mark.pahler@inteq.com](mailto:mark.pahler@inteq.com)

## GREGORY GEOLOGICAL SERVICES

**Glenn J. Gregory**

California Professional Geologist #3676

4800 Easton Drive, Suite 101  
Bakersfield, CA 93309

(661) 633-5555  
[glenng@bak.rr.com](mailto:glenng@bak.rr.com)

## Member Society News

Alaska Geological Society  
www.alaskageology.org

P. O. Box 101288  
Anchorage, AK 99510

Contact: Robert Blodgett  
786-7416



Luncheon meetings are held monthly September through May, usually on the third Thursday of the month, at the Anchorage Hilton (500 W. 3rd Avenue) from 11:30 a.m. to 1:00 p.m. The cost is \$17 (members with reservations) or \$20 (members without reservations and nonmembers). For reservations, call the AGS reservation voice mail at 907-258-9059 or contact **David Hite** at [hiteconsult@acsalaska.net](mailto:hiteconsult@acsalaska.net) by noon on Monday before the meeting.

2007 - 2008 Officers

TBA

Coast Geological Society  
www.coastgeologicalsociety.org

P. O. Box 3055  
Ventura, CA 93006

Contact: Shaun Simon  
805.495.2197



Dinner meetings are held monthly September through June, usually on the third Tuesday of the month, at the Veterans of Foreign Wars Hall at 3801 Market Street in Ventura. Social hour starts at 6:00 p.m., dinner is served at 7:00 p.m., and the talk starts at 8:00 p.m. The cost of dinner is \$15 (with reservations), \$20 (without reservations), or \$8 (students and K-12 teachers); the talk is free. For reservations, contact **Dave Brown** at 805.653.7975 or make reservations online at [www.coastgeologicalsociety.org](http://www.coastgeologicalsociety.org). Reservations should be made by 4:00 p.m. on Friday before the meeting.

2007 - 2008 Officers

TBA

Los Angeles Basin Geological Society  
www.labgs.org

515 So. Flower Street, Ste 4800  
Los Angeles, CA 90071

Contact: Jon Kuespert  
213.225.5900 x224



Luncheon meetings are held monthly September through November and January through June, usually on the third or fourth Thursday of the month, in the Monarch Room at The Grande at Willow Street Conference Centre (4101 E. Willow Street) in Long Beach. Lunch is served at 11:30 a.m., and the talk starts at 12:15 p.m. The cost is \$20 (with reservations), \$25 (without reservations), or \$5 (students). Reservations can be made online at [www.labgs.org](http://www.labgs.org) or by contacting **Ivan Aburto** at [iaburto@breitburn.com](mailto:iaburto@breitburn.com) or 213-225-5900 ext. 234. Reservations should be made by Tuesday before the meeting.

2007 - 2008 Officers

TBA

# Geolog



GEOLOGICAL LOGGING INC.  
8270 Belvedere Ave. Ste. 120  
Sacramento, CA 95826  
Telephone 916-452-9570  
Cel 952-8975 Fax 452-9573  
[geolog@sbcglobal.net](mailto:geolog@sbcglobal.net)

ERNIE BURROUGHS  
President / Owner  
Registered Geologist No. 1628

# EPOCH

Well Services, Inc.

3919 ROSEDALE HIGHWAY  
BAKERSFIELD, CA 93308

LES COLLINS  
WEST COAST SALES MANAGER

661-328-1595 MAIN  
661-635-1452 DIRECT  
661-328-1640 FAX  
661-978-3795 CELLULAR  
[www.epochwellsite.com](http://www.epochwellsite.com)

E-MAIL [leslie.collins@epochwellservices.com](mailto:leslie.collins@epochwellservices.com)



Northern California Geological Society  
www.ncgeosoc.org

9 Bramblewood Court  
Danville, CA 94506-1130

Contact: David Bero  
dbsquare@earthlink.net



Evening meetings are held monthly September through May, usually on the last Wednesday of the month, at the Masonic Center (9 Altarinda Road) in Orinda. Social hour starts at 6:30 p.m., and the talk starts at 7:00 p.m. (no dinner). The cost is \$5. For reservations, contact **Dan Day** at 925-294-7530 (leave your name on the voice recorder any time before the meeting).

2007 - 2008 Officers

TBA

Northwest Energy Association  
digellar@msn.com

P. O. Box 6679  
Portland, OR 97228-6679

Contact: James Jackson  
503-771-3887



Luncheon meetings are held monthly September through May, usually on the second Friday of the month, at the Multnomah Athletic Club (1849 SW. Salmon Street) in Portland. Meeting time is at 7:30 - 9:00 am. The cost is \$15. For information or reservations, contact **Shelley Thomas** at 503-848-2947 or **Treck Cardwell** at 503-226-4211 ext. 4681.

2007 - 2008 Officers

TBA

Sacramento Petroleum Association

P. O. Box 571  
Sacramento, CA 95812-0571

Contact: Rick Blake  
925-422-9910



Luncheon meetings are held monthly January through November, on the third Wednesday of the month at the Hungry Hunter Restaurant (450 Bercut Drive) in Sacramento. The meetings starts at noon. The cost is \$16. For information or reservations, contact **Pam Ceccarelli** at 916-322-1110 or pceccare@consrv.ca.gov.

2007 - 2008 Officers

TBA

San Joaquin Geological Society  
www.sjgs.com

P. O. Box 1056  
Bakersfield, CA 93302

Contact: Rob Negrini  
rnegrini@csusb.edu



Dinner meetings are held monthly October through June, usually on the second Tuesday of the month, at the American Legion Hall (2020 H Street) in Bakersfield. The icebreaker starts at 6:00 p.m., dinner is served at 7:00 p.m., and the talk starts at 8:00 p.m. The cost of dinner is \$20 (with reservations) or \$23 (without reservations); the talk is free. For reservations, contact **Tracey Fleming-Reese** at Tracey\_Fleming-Reese@oxy.com or phone her at 661.763.6523.

2007 - 2008 Officers

TBA



# Data Determines Direction.

## How good is yours?

Any laboratory can generate data from core samples. But when that data is being used to determine your company's next move, it had better be accurate.

At OMNI Laboratories, we have refined the science of gathering information from core and we have sharpened the art of evaluating it. Our facilities are on the cutting edge. Our proprietary technologies provide comprehensive profiles of rocks and reservoirs. And our staff of scientists is simply unsurpassed.

The result? You get precise data plus trustworthy interpretations. So that the decision you make...the direction you take...is exactly where you need to go.

## At OMNI, We've Got The Answers.

**OMNI**  
Laboratories, Inc.

Ten locations in the U.S. and South America • Headquarters: Houston, TX • 832-237-4000 • [www.omnilabs.com](http://www.omnilabs.com)

### SJGS Sponsored Field Trip

#### La Brea Tar Pits

On February 9, 2007, the entire 3rd of the Cesar Chavez Science Magnet Elementary School went on a field trip to the La Brea Tar Pits. The trip was sponsored by a grant from the San Joaquin Geological Society. Normally there are no funds for 3rd grade field trips.

Rob Negrini, the Past-President of the SJGS, attended the trip and was impressed with how well the students behaved and, also, with how well prepared they were for the trip. They had just finished their first Earth Science unit and it showed. They were very attentive and had great questions for the well trained docents. The students will follow up the trip with a unit on evolution, so it was a well timed adventure. Money well spent by the SJGS. •



### NCGS DINNER MEETING

The adventures of Clarence King  
(First USGS Director)  
and his survey of the 40th parallel

Wednesday May 30, 2007

Speaker: Dr. James G. Moore, U.S. Geological  
Survey, Menlo Park (Retired)

6:00 pm at Orinda Masonic Center

(Reservations are required by May 25, 2007)

We are sorry but we will not be able to accommo-  
date "Walk-Ins"

## This really sucks.

**IACX Energy introduces the Nitrogen Sponge™**  
*a small scale nitrogen rejection system that sucks away  
nitrogen from low Btu gas – turning dry holes into cash flows.*

Ideal for low-pressure, low-volume streams, these small, mobile processors remove nitrogen from natural gas easily and efficiently. The Nitrogen Sponge™ is non-cryogenic, environmentally friendly and eliminates nitrogen with minimal hydrocarbon losses.

It's simple and easy for producers – bring us the gas and we'll take it from there. IACX maintains each Sponge unit and oversees operations. Sponges can be run in tandem or strategically placed to maximize results. The Sponge controllers can be accessed from any computer, allowing for 24/7 monitoring.

There's nothing to own and nothing to maintain. We'll take away the headaches of processing so that you stick to what you know – finding more gas. We offer a variety of fee structures to fit your needs that include leases, percent-of-proceeds or joint-ventures projects.

*Call today and turn your off-spec gas into profit.*

**IACX ENERGY**

[www.iacx.com](http://www.iacx.com)

972-960-3210





**Greater confidence.  
Better results. Faster.**



**Petrel**

Petrel® seismic-to-simulation solution unites the subsurface domains of geophysics, geology, and reservoir engineering.

With Petrel software, asset team members can easily integrate their work—throughout the life of the field. No more over-the-wall data transfers, with the associated inaccuracies and errors. Traditional workflow and software barriers between technical disciplines are eliminated, opening the way for optimal reservoir understanding.

"In new assets and in older fields, leveraging technology is a key element of profitability and adding value for our shareholders. New insights and efficiencies from technologies within the Petrel suite of workflow tools provide significant potential benefits to companies like ours." — Steve Farris, CEO, Apache Corporation

With Petrel software, all work processes lead to one shared earth model, resulting in faster, better decisions.

[sisinfo@slb.com](mailto:sisinfo@slb.com)  
[www.slb.com/petrel](http://www.slb.com/petrel)



**Schlumberger**