

Pacific Petroleum Geologist NEWSLETTER



Pacific Section • American Association of Petroleum Geologists

September & October • 2006

Message from the President

As I write this the southern region of the Pacific Section has just escaped a sweltering heat wave. In Santa Barbara we hit a 102 F a few short miles from the coast at the base of the Santa Ynez range, where it usually only reaches the low 80's. Although a local fluctuation it does remind me of a debate going on within the AAPG about whether the organization should take a stand on the issue of global warming. This is a hot issue that has quickly moved from scientific debate to one that now has social and political consequences. Unfortunately climate modeling, a relatively recent tool and key input to the debate, is being forced to evolve quickly under intense scrutiny. The AAPG is being cautious on this issue, organizing a conversation that involves all members. It seems to me that the difficult facet of the debate for all of us is that on one hand we are an organization with obvious industry links yet on the other we work daily with data, regardless of interpretation, that has important ramifications. To view the debate and take part, log on to the AAPG website (aapg.org) and click on the Global Climate Change Card discussion. You will need to be issued a separate username and password but, it is painless other than having to remember the umpteenth website password.

On the PSAAPG business front, our July Executive Committee meeting was well attended with most of the new officers picking up their duties. Outgoing president Joan Barminski passed the gavel to me with a giggle. She did a fantastic job keeping the organization on course during these very busy times and I am counting on her counsel during the coming year. Our most pressing business will be the AAPG National Convention in Long Beach. A committee of talented PSAAPG members led by Dalton Lockman has this complicated project firmly in hand - they will make us all look good. Be sure to attend this exciting convention, there will be pertinent science and fun to

boot. We have addressed the troubling insurance issue for our affiliated societies. This has been lurking for a few years and now demands a full court press. Although seemingly innocuous, it is quite a problem that we are taking very seriously. John Minch, our national representative to the Advisory Counsel, is working hard to help us in our current goal to leverage National AAPG coverage for our affiliated societies. Also, we discussed ways to streamline the organization. As a group we are stretched professionally during this time of high product prices. We need to ensure Pacific Section is able to sustain itself by continuing to offer relevant services to a very busy membership. On this front we discussed tight integration between our newsletter and website. Although this work is just beginning it promises to benefit all members. Finally, Larry Knauer informed us that there are some interesting items in our publishing pipeline. PSAAPG's goal of fostering continuing research and being a repository for past work is crucial to the scientific and professional advancement of us all. It has been one of the hallmarks of this organization and something we will carefully steward.

I know I can speak for all those volunteers that fill roles within the PSAAPG when I say that year ahead will be busy, exciting and gratifying.

Thanks
Mike

IN THIS ISSUE

AAPG National Conference - Societies' Field Trip	3
AAPG National Conference - Field Trip Previews.....	4
Announcements	7
Poems for Aspiring Geologists with Rhyme & Reason, R. Schalla.....	10
Fairwell to Friends.....	11
AAPG & Member Societies News.....	12



**AAPG ANNUAL CONFERENCE & EXHIBITION
UNDERSTANDING EARTH SYSTEMS
PURSUING THE CHECKERED FLAG**

APRIL 1-4, 2007 * LONG BEACH, CA



**Abstracts Due
September 27, 2006**

To submit abstracts and view the most up-to-date session listings, visit www.aapg.org/longbeach



**Priority Exhibit Space
Deadline is October 13.**

www.aapg.org/exhibits/longbeach



Maximize your AAPG investment by sponsoring an event, item or publication; or by advertising in the official program book!



DAVID B. DEL MAR

Consulting Petroleum Geologist
California Registered Geologist #634

Development – Thermal EOR – Property Reviews

2027 Park Drive
Los Angeles, CA 90026

H (323) 664-3358
dbdelmar@earthlink.net

Geologists,

Start Your Engines

and

Make your way to one of the field trips

sponsored by the following Societies:

American Association of Petroleum Geologist

Coast Geological Society

Los Angeles Basin Geological Society

Pacific Section AAPG

San Joaquin Basin Geological Society

Society of Sedimentary Geologists

Advertising Rates

Members	Single issue	Year (6 issues)
Full Page	\$400.00	\$1600.00
Half Page	\$250.00	\$1050.00
Quarter Page	\$150.00	\$650.00
Business Card		\$250.00

Societies Free Advertising

Conventions Societies	Unlimited Space 1/4 page	PS-AAPG Newsletter AAPG Explorer

AAPG National Conference - Societies Field Trips

AAPG

Tectonics of the San Andreas Fault - Mecca Hills
Deep Water Siliciclastic Reservoirs

CGS

Stratigraphic and Structural Controls on Fracture Distribution: Examples from California's Coastal Basins
Wine and Geology California Central Coast

LABGS

Borderland Rift Basement Tectonics and Geology of Santa Catalina Island
Geology of the Palos Verdes Peninsula
Santa Monica Mt Outcrops - Deep Production from the LA Basin
Urban Oil Field Geology - Los Angeles Basin

PS-AAPG

Heavy Oil: Production, Core and Outcrops from the East Flank of the San Joaquin Basin
Heavy Oil: "Oil On Their Shoes" - Famous and Little Known Oil Seeps of LA and Ventura Counties
THUMS Islands Tour

SEPM

Baja California - Volcanic Arcs and Related Sedimentation
Sand Injectites in the western San Joaquin Valley
Santa Cruz Island -- Sedimentation and deformation of a Tertiary continental margin
Sedimentology and Facies Architecture of Channelized Slope System: Capistrano Formation, San Clemente,
Southern California
Tectonic Controls on Facies Distribution and Stacking Patterns, Ridge Basin, southern California

SJGS

Late Cenozoic Structural Framework and Stratigraphic Evidence of the Inception of the Colorado River Below
Grand Canyon
Searching for the Mojave-Sonora Megashear in Northeastern Mexico
Synchronous extension and strike-slip faulting from the Sierra Nevada to the Colorado Plateau:
A tour of exposed analogues to petroleum-bearing basins and structures
The San Andreas Fault Observatory at Depth (SAFOD) and a tour of the San Andreas Fault System

GREGORY GEOLOGICAL SERVICES

Glenn J. Gregory
Calif. Reg. Geol. #3676

(661) 663-8542 Phone/Fax (661) 633-5555
8804 O'Meara Court 4800 Easton Drive, Suite 101
Bakersfield, CA 93311 Bakersfield, CA 93309
glennj@bak.rr.com

Joseph F. Elliott

Geophysical Consultant

Exploration Management
international / domestic interpretations
synthetics modeling
Office: (949) 240-1505
26801 Lariat Circle
San Juan Capistrano, CA 92675

PS-AAPG Field Trip

Heavy Oil: "Oil On Their Shoes"

Famous and Little Known Oil Seeps of LA and Ventura Counties

Global oil exploration had its beginnings with the search for oil seeps on the ground. Southern California has an amazing collection of numerous active seeps, both onshore and offshore. This trip will view active seeps and discuss the geology, tectonics, and the unique biology of seeps in the Santa Clara and Ojai Valleys of Ventura County. In addition, we will discuss the history of local oil fields and how they relate to their nearby seeps. Learn about the famous Monterey formation, the source of many seeps and the reservoir rock and source for many oilfields. If time permits we will visit the South Mountain Oilfield and view the "Little Grand Canyon" with spec-

tacular cliffs of red beds overlooking the Santa Clara Valley.

In the afternoon we will visit the famous La Brea Tar Pits on Wilshire Blvd in Los Angeles where we'll view the excavation and have a private tour of the Paleontology Laboratory by Mr. Christopher Shaw, Collection Manager of the George C. Page Museum of the Natural History Museum of LA County. We'll see the fabulous collection of Pleistocene fossils that are still being excavated. We'll also get a quick glimpse of urban oilfield in the western Los Angeles basin.



PS-AAPG Field Trip THUMS Islands Tours

Take advantage of a rare opportunity to visit Long Beach's scenic oil islands during a three hour tour. The Wilmington field, one of the largest oil fields in the U.S. (over 2.5 billion bbls produced) was developed under the city of Long Beach in an urban setting and major port. The field was originally leased by a consortium of five major oil companies, Texaco, Humble, Union Oil, Mobil, and Shell (known by the acronym of THUMS) who agreed to operate the field under the direction of the city of Long Beach. By restricting the development to offshore facilities, the city of Long Beach was able to have input



on the aesthetics and safety of oil operations within its harbor. Hear the entire story, see the operations and learn the history of this giant oil field that underlies the convention center and surrounding area.



PacSeis, Inc.

Pacific Seismic Company

The Leader in Sub-Surface Information

Resources that Deliver the Difference

- Seismic available for immediate license
- Over 500,000 line miles of 2D & 3D data located in domestic United States (onshore & offshore)

Exclusive Opportunity 2006

Recently acquired seismic databases by Pacific Seismic Co.

- Chevron USA California, OXY USA Nationwide (including Arco & Enron)
- Santa Fe Energy, TXO, Cities Services Oil & Gas Nationwide
- Southern Pacific, PG&E / NGC, SOHIO
- Seventeen Newly Acquired 3D's Covering Northern & Southern California

3D Seismic Acquisition Management

- J. Dwight Melancon – Dwight@dimensional.com

Pacific Seismic Company

Your full-service Seismic Brokerage & Acquisition Company

Bakersfield
Tel: 661.322.1171

Denver
Fax: 661.322.1181

Tulsa

Houston
Web Site: PACSEIS.com

curtisonway@arrival.net

kathysmith@arrival.net

PS-AAPG Field Trip

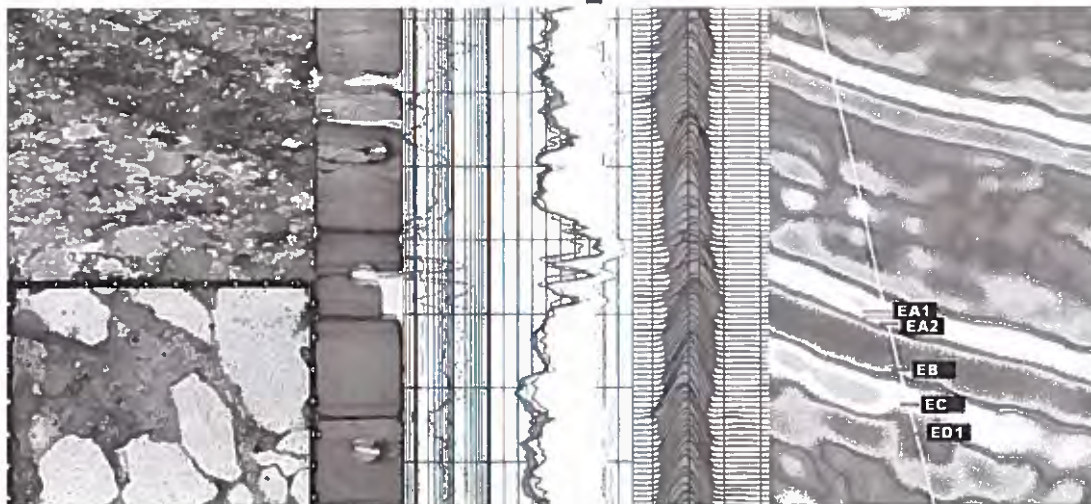
Heavy Oil: Production, Core and Outcrops from the East Flank of the San Joaquin Basin

We will be touring three heavy oil fields and discussing the production methods used in each. In addition, core and outcrops of the producing formations from each field will be examined and discussed. The fields we will see are Kern River, Round Mountain and Mt. Poso. These three heavy oil fields abut the northeast city limits of Bakersfield in Kern County, California located in the San Joaquin Valley about 2½ hours north of Long Beach. Together these fields have a cumulative production of 2.5 billion barrels of heavy oil out of a total of 5 billion barrels from all the fields in the immediate area. The Kern River field, one of the largest fields in the United States, accounts for nearly 2 billion of that. The API gravities of the oil range from 12° to 15°. The reservoir rocks are Miocene and Pliocene marine and fluvial sediments with very different trapping mechanisms. The Kern River field produces from the Kern River formation which is a Mio-Pliocene fluvial braided stream and channel depositional environment where the oil has accumulated in a potentiometric surface



trap. The Mt. Poso and Round Mountain fields produce from the Miocene marine Vedder sands where the oil has accumulated in a number of fault traps.

Reservoir Optimization



Core Laboratories, Inc.
3430 Unicorn Road
Bakersfield, CA 93308
(661) 392-8600
(661) 392-0824
E-mail: corebak@ix.netcom.com

Core Laboratories, Inc.
600 W. 58th Ave., Unit D
Anchorage, AK 99518
(907) 349-3541

www.corelab.com

Announcing the New Theme for Earth Science Week:

“Be a Citizen Scientist!”

October 8-14, 2006

What does it mean to be a citizen scientist? It means getting involved! Real people collecting data, observing, and testing. You don't have to have a Ph.D. or even formal education in Earth science to be a citizen scientist, only an interest and desire to learn. A citizen scientist is YOU involved in real science and research!

Find more ideas about how you and others can become scientifically literate citizens and get involved in Earth Science Week 2006 by visiting the pages on this site! www.earthsciweek.org

What's New?

- Order your 2006 Earth Science Week Toolkits now. (August 7, 2006)
- Read the latest issue of our newsletter, Earth Science Week Update. (July 7, 2006)
- Earth Science Week 2004 and 2005 Toolkits are still available!
Click here for more information. (June 13, 2006)
- Read AGI's Press Release about the new 2006 Earth Science Week Theme! (May 11, 2006)

Pacific Section encourages all the local societies to get involved in their communities; financial support is available from PSAAPG for these efforts.

Geolog



GEOLOGICAL LOGGING INC.
8270 Belvedere Ave. Ste. 120
Sacramento, CA 95826
Telephone 916-452-9570
Cel 952-8975 Fax 452-9573
geolog@sbcglobal.net

ERNIE BURROUGHS
President / Owner
Registered Geologist No. 1628

 American
Digitizing

Kevin Patrick
Digitizing Tech
kevin@americandigitizing.com

David Patrick
PDF Specialist
david@americandigitizing.com

American Digitizing, LLC
4800 Easton Dr. Suite #104
Bakersfield, CA 93309



Have too much paper on your hands?

Let us digitize it for you!

WELL LOGS
WELL HISTORIES
CORE DATA
DEVIATION SURVEYS

Call Today! 661-496-9639
www.americandigitizing.com

Announcements



THE PUBLIC is invited ON SATURDAY, SEPTEMBER 30, to historic El Saucito Ranch on the Carrizo Plain National Monument. This event is sponsored by BLM and the Friends of the Carrizo Plain.

A WORK DAY AND HISTORIC STORYTELLING will be held at the El Saucito Ranch to

- Clear downed trees,
- Install signs, and
- Delineate a trail to interpret the historical past of El Saucito Ranch and the Carrizo Plain.

CALL FOR RESERVATIONS & MAP: (661) 391-6093

MEET at the Goodwin Education Center at 9:30 a.m. on September 30. The group will leave from there and will caravan past locked gates to the El Saucito Ranch. Work will end that afternoon.

WHAT TO BRING:

- Sunglasses
- Wide-brimmed hat
- Sturdy footwear or boots
- Suntan lotion
- Work gloves if you have them
- Plenty of water and beverages

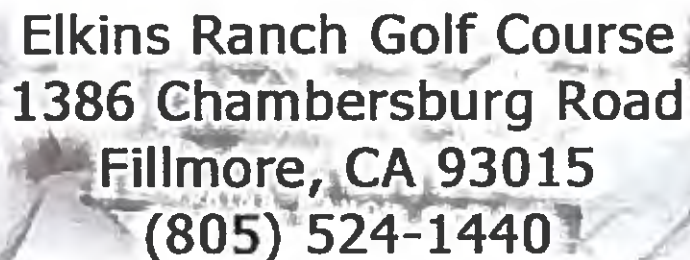
WHAT TO EXPECT: Lunch will be provided. (If you choose to make a voluntary donation, it would be appreciated.) The storytellers will be people who know Carrizo Plain; some are from families who have lived there for generations. The weather may be hot or cold or in between. The ground is uneven in places, and there is a hill. The work will involve lifting, bending, walking, and other tasks according to your ability. People joining or leaving the work group will be escorted through the closed gates.

It should be a lot of fun and very interesting!

SAVE THE DATE

Hurry, limited to the first 144 players!!!

8th ANNUAL
JOHN WOOLLEY MEMORIAL
GOLF TOURNAMENT & BBQ
PROVIDING SCHOLARSHIPS THROUGH
COAST GEOLOGICAL SOCIETY
(an affiliate of Pacific Section AAPG)



Elkins Ranch Golf Course
1386 Chambersburg Road
Fillmore, CA 93015
(805) 524-1440

Friday, October 13, 2006

TEXAS SCRAMBLE, Check-in 9:30 am, Shotgun start 11:30 am

Golf – \$100/person (Box Lunch & BBQ Dinner included) // BBQ Only – \$20

Mulligans and raffle tickets available for purchase – BIG PRIZES

Raffle & Awards to follow tournament at the BBQ

Multiple Sponsorship Levels Available



For More Information // To Save Your Spot, email:

golf@coastgeologicalsociety.org

or

Go To:

www.coastgeologicalsociety.org

Poems for Aspiring Geologists with Rhyme and Reason

By Ronald Schalla

Birth of a Gabbro

Stillwater or Pallisades - what a place to be borne,
while floating in a magma differentiating its form.

Eons ago, a sill quite hot on that date,

Had "plag" and pyroxene stack and cumulate.

Feldspar and augite neither wanting to form late,

Made some grains subophitic and caused small
feldspars to nucleate.

Whether meso-, ad-, or eu-hedral cumulate in form,
Soon in a shallow magma chamber a gabbro was
born.

Is it Basalt?

En mass it displays as a flowing extrusive,
Spreading over the land, its rate of chilling is
conclusive.

The resulting form might be glomeroporphyritic,
With a mesostatis that is intersertal to hyalopilitic.

If the thin section shows intergranular-porphyritic

You can be pretty damn sure its diktytaxitic.

For an andesite or dacite it might be mistaken,

So if you know not the difference, igneous
petrology should be taken.

Tuff Texture

Feldspar-rich magma extruded into the air,
Spreads shards and pumice fragments almost every-
where.

Hot flows of ash sometimes hundreds of feet thick

Still nice and hot are beginning to stick.

When pink in color it is likely rhyolitic,

but if welded and squashed its definitely eutaxitic.

Volcanic activity will create such a tuff,

So if you stay long nearby, it can really get rough.

Everett Stevenson
Operations Coring Coordinator



INTEQ (Formerly Christensen Coring)

6117 Schirra Court
Bakersfield, California 93313
Tel: 661-834-9654, 800-366-9654
Fax: 661-834-2450
Pgr: 661-321-7156
E-Mail: mark.pahler@inteq.com

Lydia M. Hopps
Associate Vice President
Financial Advisor
(800) 767-0170

Retirement Planning
Asset Allocation Strategies
Corporate Cash Management

Comprehensive Financial Planning

Morgan Stanley

lydia.hopps@morganstanley.com

EPOCH

Well Services, Inc.

3919 ROSEDALE HIGHWAY
BAKERSFIELD, CA 93308

661-328-1595 MAIN
661-635-1452 DIRECT
661-328-1640 FAX
661-978-3795 CELLULAR
www.epochwellsite.com

LES COLLINS
WEST COAST SALES MANAGER

E-MAIL leslie.collins@epochwellservices.com

J.M. "BUZZ" DELANO, JR.
Consultant

Cell (661) 747-0337
Office (661) 832-5229
Fax (661) 832-5229
Email: BuzzBake@aol.com

Delano Petrophysical

Consulting Services

816 Ferdinand Ct.
Bakersfield, California 93309

Dipmeter Analysis
Tape Conversion Editing
Expert Petrophysical Analysis
Wellsite Supervision

Data Determines Direction.

How good is yours?

Any laboratory can generate data from core samples. But when that data is being used to determine your company's next move, it had better be accurate.

At OMNI Laboratories, we have refined the science of gathering information from core and we have sharpened the art of evaluating it. Our facilities are on the cutting edge. Our proprietary technologies provide comprehensive profiles of rocks and reservoirs. And our staff of scientists is simply unsurpassed.

The result? You get precise data plus trustworthy interpretations. So that the decision you make...the direction you take...is exactly where you need to go.

At OMNI, We've Got The Answers.

OMNI
Laboratories, Inc.

Ten locations in the U.S. and South America • Headquarters: Houston, TX • 832-237-4000 • www.omnilabs.com



Gardner Murl Pittman
April 9, 1922 - April 5, 2006

Gardner Murl Pittman, 83, of Lubbock went to be with the Lord and Savior Jesus Christ April 5, 2006. He was residing at Garrison Nursing Home.

Gardner was born in Mullin, Texas in Mills County on August 9, 1922 to Murl and Novella (Gaines) Pittman. He was the oldest of four children and experienced the life of a farming family. He had a brother Glen and two sisters, Dorothy and Annola. He went to the local schools and enjoyed playing baseball.

Gardner joined the U. S. Navy on Oct. 23, 1942 to serve his country during World War II in the Pacific Theater. He was honorably discharged on Jan. 20, 1946 as a Seaman First Class USNR.

Upon completion of his military service, he resumed his college studies at Texas Tech University. During this same time he met the love of his life, Violet Lee Motl of Anton and they were married on June 15, 1947 in Lubbock. He received a Bachelor of Science in Petroleum Geology in May of 1949 and also began their family with the birth of a daughter, Richi Lee. Gardner continued his education, receiving a Master of Science in Geology in 1951.

Gardner began his professional career accepting the position of petroleum geologist with Tidewater Oil in Midland. They had two more children, both boys, Donald G. and Franklin M. while there. It was not all work and no play for Gardner. He was on the company softball teams and enjoyed taking the family to the company picnics. He built the kids a huge covered sand box and made a large swing set out of old oil well piping. He had a love of roses with over fifty bushes around the house.

In 1960 he accepted a promotion and transfer to Bakersfield, Calif. The family flourished as did his career. Tidewater became Getty Oil and he was awarded 'Best Oil Finder' 1965-1970 in the California area. He drove twice a week for several years to Los Angeles and in 1974 completed his Master of Science in Petroleum Engineering degree from the University of Southern California.

In 1969 he was appointed to the California State Board of Registration for Geologists by then Governor Ronald Reagan. This was the greatest honor in his work career and the one he was most proud. He was a member of the American Association of Petroleum Geologists for 55 years. He had a special project with the company observing and analyzing the movement of the San Andres fault line which runs through the Bakersfield area.

He continued his love of gardening with a new interest in grape and fruit tree horticulture. He built beautiful brick planter boxes from the bricks of old oil well foundations around the Bakersfield area. Asking Violet to fix a picnic lunch and taking everyone to gather the bricks was Gardner's idea of a family outing. He enjoyed taking the family to Lake Tahoe in the summer for camping trips. Relatives from Texas would come to visit and it was always a pleasure to show them the wineries, the Pacific Ocean and Disneyland. He enjoyed listening to country music and whistling along to the songs of the old greats like Hank Williams and Buck Owens.

From the Lubbock Avalanche-Journal, April 7, 2006

News from our Member Societies

Alaska Geological Society
www.alaskageology.org

P. O. Box 101288
Anchorage, AK 99510

Contact: Kristine Crossen
afkjc@uaa.alaska.edu



Luncheon meetings are held monthly September through May, usually on the third Thursday of the month, at the Anchorage Hilton (500 W. 3rd Avenue) from 11:30 a.m. to 1:00 p.m. The cost is \$17 (members with reservations) or \$20 (members without reservations and nonmembers). For reservations, call the AGS reservation voice mail at 907-646-7106 or contact **Edna Beuhler** at edna.beuhler@encana.com by noon on Monday before the meeting.

2006 - 2007 Officers - TBA

September 7th: "Pebble Alaska: A Super Giant Porphyry Gold-Copper-Molybdenum Deposit"
Mark Rebagliati.

October 18th: "The Lisburne Group of northern Alaska: Regional Geology and Resource Implication"
Julie Dumoulin

Coast Geological Society
www.coastgeologicalsociety.org

P. O. Box 3055
Ventura, CA 93006

Contact: Shaun Simon
805.495.2197



Dinner meetings are held monthly September through June, usually on the third Tuesday of the month, at the Veterans of Foreign Wars Hall at 3801 Market Street in Ventura. Social hour starts at 6:00 p.m., dinner is served at 7:00 p.m., and the talk starts at 8:00 p.m. The cost of dinner is \$15 (with reservations), \$18 (without reservations), or \$8 (students and K-12 teachers); the talk is free. For reservations, contact **Dave Brown** at 805.653.7975 or make reservations online at www.coastgeologicalsociety.org. Reservations should be made by 4:00 p.m. on Friday before the meeting.

2005 - 2006 Officers

President:	Shaun Simon	805.495.2197	president@coastgeologicalsociety.org
Vice President:	Greg Millikan	805.766.2040	vpresident@coastgeologicalsociety.org
Treasurer:	John Minch	805.682.4711 x137	treasurer@coastgeologicalsociety.org
Secretary:	John Harris	805.407.7664	harris@numericssolutions.com

2006 - 2007 Officers Candidates:

President:	John Minch	805.682-4711, ext 137
Vice President:	Greg Millikan	805.766.2040
Treasurer:	Open	
Secretary:	Susan Bartz	805.682.4711

September 19th: "Rincon Mountain Megalandslide"
Larry Gurrola

October 13th: The 8th Annual John J. Woolley Memorial Golf Tournament

News from our Member Societies

Los Angeles Basin Geological Society

515 So. Flower Street, Ste 4800

Contact: Jon Kuespert



Luncheon meetings are held monthly September through November and January through June, usually on the third or fourth Thursday of the month, in the Monarch Room at The Grande at Willow Street Conference Centre (4101 E. Willow Street) in Long Beach. Lunch is served at 11:30 a.m., and the talk starts at 12:15 p.m. The cost is \$20 (with reservations), \$25 (without reservations), or \$5 (students). Reservations can be made online at www.labgs.org or by contacting **Ivan Aburto** at iaburto@breitburn.com or 213-225-5900 ext. 234. Make reservations by Tuesday before the meeting.

2006 - 2007 Officers

President:

Jon Kuespert

jkuespert@breitburn.com

Treasurer:

Steve Zigan

szigan@eri-us.com

September 27th: "Using Sequence Stratigraphy to Characterize and Manage a Mature Diatomite Reservoir at Lost Hills Field, California": Dr. Michael Clark, consultant.

October 26th: "Tectonics of the Imperial Valley": Dr. Robert Mellors, SDSU

Northern California Geological Society

www.ncgeolsoc.org

9 Bramblewood Court

Danville, CA 94506-1130

Contact: David Bero

dbsquare@earthlink.net



Evening meetings are held monthly September through May, usually on the last Wednesday of the month, at the Masonic Center (9 Altarinda Road) in Orinda. Social hour starts at 6:30 p.m., and the talk starts at 7:00 p.m. (no dinner). The cost is \$5. For reservations, contact **Dan Day** at 925-294-7530 (leave your name on the voice recorder any time before the meeting).

2006 - 2007 Officers - TBA

September 27th: Slide Show Lead-in to Book Publication: Geology of the San Francisco Bay Region; California Natural History Guide 79; Dr. Doris Sloan and Dr. John Karachewski

October 25th: "Subsurface Geology, Hydrology, Basin Evolution, and Climatic Cyclicity of the Santa Clara Valley Area": Dr. Richard Stanley, Dr. Russell Graymer, Dr. Carl M. Wentworth.

Northwest Energy Association

dlgellar@msn.com

P. O. Box 6679

Portland, OR 97228-6679

Contact: James Jackson

503-771-3887



Luncheon meetings are held monthly October through May, usually on the second Friday of the month, at the Multnomah Athletic Club (1849 SW. Salmon Street) in Portland. The meeting starts at 1:00 p.m. The cost is \$15. For information or reservations, contact **Shelley Thomas** at 503-848-2947 or **Treck Cardwell** at 503-226-4211 ext. 4681.

2006 - 2007 Officers

President

Jamie Schick

(503) 948-7726

Remaining Officers: TBA

Sacramento Petroleum Association

P. O. Box 571

Sacramento, CA 95812-0571

Contact: Rick Blake

925-422-9910



Luncheon meetings are held monthly January through November, on the third Wednesday of the month at the Hungry Hunter Restaurant (450 Bercut Drive) in Sacramento. The meetings start at noon. The cost is \$16. For information or reservations, contact **Pam Ceccarelli** at 916-322-1110 or pceccare@consrv.ca.gov.

2006 - 2007 Officers

President:

Rick Blake

blake2@lml.gov

Vice President:

Marc Brennen

marc.brennen@halliburton.com

Secretary/Treasurer/Editor

Pam Ceccarelli

Pam.Ceccarelli@conservation.ca.gov

News from our Member Societies

San Joaquin Geological Society
www.sjgs.com

P. O. Box 1056
Bakersfield, CA 93302

Contact: Rob Negrini
rnegrini@csusb.edu




Dinner meetings are held monthly October through June, usually on the second Tuesday of the month, at the American Legion Hall (2020 H Street) in Bakersfield. The icebreaker starts at 6:00 p.m., dinner is served at 7:00 p.m., and the talk starts at 8:00 p.m. The cost of dinner is \$15 (with reservations) or \$18 (without reservations); the talk is free. For reservations, contact **Jonathan Lange** at 661-664-7644 or jlange@chevron.com.

2006 - 2007 Officers


President:	Bill Scanlan	wscanlan@bak.rr.com
President- Elect:	Dave Miner	dmminer@aeraenergy.com
Vice President:	Jonathan Lange	JLange@chevron.com
Secretary:	Tracey Fleming-Reese	tracey_fleming-reese@oxy.com
Treasurer:	Linda Specht	linda.specht@corelab.com
Past-President	Rob Negrini	rnegrini@csusb.edu

September 8th: SJGS Annual Golf Tournament and Barbeque

October 10th: TBA



Take a Look at the Power of Integrated 3D Vision



DYNAMIC GRAPHICS, INC.
1015 Atlantic Avenue
Alameda, CA 94501
www.dgi.com
510 522 0700
contact
Roy Burlingame
661 204 3016
roy@dgi.com

Integrated Vision

- ◆ efficient, simple data integration
- ◆ seamless software integration
 - ✓ geoscience petrophysics, engineering
- ◆ promote the power of your 2D tools
 - ✓ quickly resolve complex structures
 - ✓ increase confidence of interpretations
 - ✓ reduce drilling risk
- ◆ visualize and quantify 3D reservoir properties
 - ✓ delineate "sweet" spots and bypassed pay
 - ✓ add confidence to economics and reserves

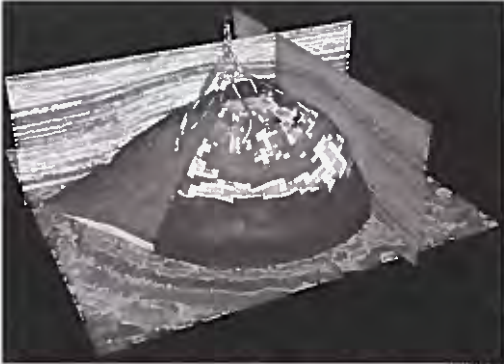



Shared Vision

- ◆ multi-disciplinary co visualization
- ◆ demonstrate and clarify recommendations
- ◆ expand team knowledge and confidence
- ◆ enhance collaborative decision processes
- ◆ accelerate action & improve success rate

Dynamic Vision

- ◆ horizontal well planning — on-site geosteering
- ◆ rapid model updates and iteration
- ◆ dynamic simulation integration

POWERFUL ◆ VERSATILE ◆ FAST ◆ AFFORDABLE

Flexible

Linux®
Windows®
UNIX®

Affordable On Your Terms

Purchase
Lease
Flex Rent

DYNAMIC GRAPHICS, INC. is a registered trademark of Dynamic Graphics, Inc. (Name Registered). earthVision is a registered trademark of Dynamic Graphics, Inc. (Name Registered). The EarthVision name and logo are registered trademarks of Dynamic Graphics, Inc. (Name Registered). WellFlow Manager is a registered trademark of Dynamic Graphics, Inc. All other trademarks belong to their respective holders.

**PACIFIC SECTION
AMERICAN ASSOCIATION OF PETROLEUM GEOLOGISTS**

2006 - 2007 OFFICERS

President Mike Wracher
805.745.2272
mwracher@venocoil.com

President-Elect Jonathan Kuespert
213.225.5900 x224
jkuespert@breitburn.com

Vice President Michael Ponek
661.654.7342
mponek@chevron.com

Secretary Randall Stephenson
661.869.8043
Randall_Stephenson@oxy.com

Treasurer Melissa Kolb
661.763.6481
mmkolb@bak.rr.com

Past President Joan Barminski
805.389.7509
joan.barminski@mms.gov

NEWSLETTER STAFF

Editor Karen Blake
661.395.5214
kblake@plainsxp.com

Advertising Coordinator Karen Blake
661.395.5214
kblake@plainsxp.com

Geological Coordinator Frank Cressy
661.323.6828
fcressy@prodigy.net

Website Coordinator Hana Baker
hanabaker@chevron.com

MEMBERSHIP/SUBSCRIPTIONS

Membership Chair Mark Yarlot
661.616.3851
mey@bry.com

PUBLICATIONS

Publications Chair Larry Knauer
661.392.2471
larryknauer@chevron.com

Pacific Petroleum Geologist Newsletter is published bimonthly by the Pacific Section of the American Association of Petroleum Geologists, P. O. Box 1072, Bakersfield, CA 93302; www.psaapg.org (website); psaapg@psaapg.org (e-mail).

Membership dues (including subscription) are \$12 per year. Membership inquiries and change of address should be directed to the Membership Chair.

Articles, news about members and events, and other items of interest to our members are encouraged and should be sent to the Editor. Geological articles should be sent to the Geological Coordinator.

Memorial notices, articles, and photographs should be sent to the Editor. Materials may be condensed to accommodate newsletter space constraints and will be returned upon request.

Members with opinions or suggestions regarding our conventions, publications, newsletter, or other items of interest to our members are encouraged to share their views and ideas by sending letters to the Editor. All letters will be shared with the Executive Committee, and those with relevant and timely content will be published in the newsletter; letters may be condensed to accommodate newsletter space constraints.

Advertising inquiries should be directed to the Advertising Coordinator.

The submission deadline for the November & December 2006 issue is October 20, 2006.

The newsletter is accessible at www.psaapg.org.

User: psaapg
Password: loidier

Contributors to This Issue

Mike Wracher
Dalton Lockman
Ronald Schalla



PACIFIC SECTION AAPG
P. O. Box 1072
BAKERSFIELD, CA 93302

PRESORTED
STANDARD
U.S. POSTAGE PAID
BAKERSFIELD, CA
PERMIT NO. 1163