

# Pacific Petroleum Geologist

## NEWSLETTER



Pacific Section • American Association of Petroleum Geologists

July & August • 2006

## Message from the President

Your Pacific Section is alive and well, and living on the Pacific Rim. And you, its members, are vibrant and fully engaged in the profession of geology. Nowhere was this lively enthusiasm more ably displayed than at the Convention in Anchorage. Chairman Greg Wilson took up the challenge and coordinated ably with the GSA and SPE to bring forth a meeting that had something for everyone. Over 900 people enjoyed the frontier experience, and Greg, we thank you and the entire Alaska Geological Society for your dedication to the task. The convention was a great success in so many ways.

A hearty thank you is due to each of the officers who have served the Section this past year. As we change the guard, thanks go to Janet McAlee for her work as Secretary, Mike Clark as Vice-President, and Steve Sanford as Past-President. Newsletter Editor Karen Blake brought style and great content to the Pacific Petroleum Geologist newsletter. Steve Sanford, Past-President, gave the benefit of his counsel all year long. Continuing on for another year will be Melissa Kolb, Treasurer for both the Section and the PSAAPG Foundation. Incoming President Mike Wracher will be ably assisted by the new VP and Pres-Elect (see article on election results in this Newsletter).

A host of dedicated individuals serve as Committee Chairs. Without them, much of the mission of the Section would not be accomplished. Thank you to Hana Baker, our webmaster; Muriel Norton, finance; Mark Yarlot, membership; Tom Hopps, planning and organization; Rick Blake, legislative and public affairs; Larry Knauer, publications; Adam Mahan, directories; Bob Lindblom, honors and awards; Rob Fairman, constitution and

bylaws; and Kay Pitts and Larry Knauer, conventions. A special relationship is maintained with the California Well Sample Repository under the auspices of Larry Knauer and Mark Wilson; this effort often goes unremarked, but is ahead of the curve in maintaining and preserving geological samples that otherwise would have been destroyed. Mark Wilson also heads the PSAAPG Foundation, wherein our publications and various scholarships are supported.

Perennially, Bob Lindblom brings energy and enthusiasm to the Honors and Awards committee, and this year's results again displayed the wisdom of his management. Thanks also go to Sandra Szymanski, who coordinates the PSAAPG Teacher of the Year award, won this year by Scott Kleuver from Anchorage. The awards were presented in Anchorage at the Convention, and are fully described in this newsletter, complete with photos courtesy of Brian Pitts. Congratulations to all the winners!

Our Section is very fortunate that Don Lewis represented us on the AAPG Advisory Council over the last 3 years. Thank you, Don, for your insight into the workings of AAPG and keeping an eye out for our Section. Happy "retirement" from the Council; enjoy your time back at home with the Northern California Geological Society. And congratulations to

### IN THIS ISSUE

Pacific Section AAPG 2006 - 2007 Elected Officers.....	3
AAPG Officers and Officers Candidates.....	4
2006 Honors and Awards Winners.....	6
News in Brief.....	9
Societies Announcements.....	10
Traveler's Log - Kupaaruk Field Trip.....	13
Farewell to Friends .....	15
News from our Member Societies.....	18

## Pacific Section AAPG

recently-elected John Minch, of the Coast Geological Society, our Advisory Council representative for 2006-2009, who now steps up to the plate as he begins his rotation on the Council. Welcome to the bigs, John!

Several others deserve recognition as they serve to connect us with AAPG. Thanks to Barbara Houghton, representing the Division of Environmental Geosciences, and John Armentrout, representing the Division of Professional Affairs. Don Clarke, hailing from the Los Angeles Basin Geological Society, ends his reign as Chair of the AAPG House of Delegates; his accomplishments are legend, enumerated in the PPG and the House's own Delegates Voice. He continues his labors nationally, serving on the Executive Committee. Thanks, Don, for giving your time and energy to the AAPG, and sharing the Pacific experience with the organization at large.

Pacific Section Delegates also served on several House committees during the 2005-2006 year - Karen Blake, Rules and Procedures; Don Clarke,

Newsletter; Bob Countryman, Resolutions; and Bob Lindblom, Honors and Awards, Constitution & By-laws, and Nomination and Election Committees. A big thanks to all House Delegates!

In closing, I want to thank you for being members of the Pacific Section AAPG. All of us volunteer our time to serve our professional societies, whether in the LA Basin, the Pacific Northwest, the heart of the San Joaquin Valley, the far north in Anchorage, the San Francisco Bay area, the Ventura-Santa Barbara coast, or the Sacramento Valley. This Section needs each and every one of us to contribute however we can to "making things go" in a positive and productive direction. So please get involved and stay involved, and together we will achieve our goals. I have truly enjoyed the year I've spent as President of the Pacific Section, and look forward to joining the ranks of past presidents and continuing the good work that has been set in motion.

- Joan Barminski  
President, 2005-2006

**earthVision**  
by DYNAMIC GRAPHICS, INC.

*At the core of your workflow*

### Integrated Vision

- ◆ efficient, simple data integration
- ◆ seamless software integration
  - ✓ geoscience, petrophysics, engineering
- ◆ promote the power of your 2D tools
  - ✓ quickly resolve complex structures
  - ✓ increase confidence of interpretations
  - ✓ reduce drilling risk
- ◆ visualize and quantify 3D reservoir properties
  - ✓ delineate "sweet" spots and bypassed pay
  - ✓ add confidence to economics and reserves

### Shared Vision

- ◆ multidisciplinary co visualization
- ◆ demonstrate and clarify recommendations
- ◆ expand team knowledge and confidence
- ◆ enhance collaborative decision processes
- ◆ accelerate action & improve success rate

### Dynamic Vision

- ◆ horizontal well planning—on site geosteering
- ◆ rapid model updates and iteration
- ◆ dynamic simulation integration

## Take a Look at the Power of Integrated 3D Vision

POWERFUL ◆ VERSATILE ◆ FAST ◆ AFFORDABLE



### Flexible

Linux®  
Windows®  
UNIX®

### Affordable On Your Terms

Purchase  
Lease  
Flex Rent



DYNAMIC GRAPHICS is a registered trademark of Dynamic Graphics, Inc. (Marco Registered)  
EarthVision is a registered trademark of Dynamic Graphics, Inc. (Marco Registered). The  
EarthVision name and logo are registered trademarks of Dynamic Graphics, Inc.  
(Marco Registered). WorkFlow Manager is a registered trademark of Dynamic Graphics, Inc.  
All other trademarks belong to their respective holders.



DYNAMIC GRAPHICS, INC.

1015 Atlantic Avenue  
Alameda, CA 94501  
www.dgi.com  
510 522 0700  
contact  
Roy Burlingame  
661 204 3016  
roy@dgi.com

## Pacific Section AAPG Elected Officers - 2006 - 2007

President  
Mike Wracher  
805-745-2272  
mwracher@venocoinc.com

Secretary  
Randall Stephenson  
661-869-8043  
Randall\_Stephenson@oxy.com

President-Elect  
Jonathan Kuespert  
213-225-5900 x224  
jkuespert@breitburn.com

Treasurer  
Melissa Kolb  
661-763-6481  
mmkolb@bak.rr.com

Vice-President  
Michael Ponek  
661-654-7342  
mponek@chevron.com

Past President  
Joan Barminski  
805-389-7509  
joan.barminski@mms.gov



**PacSeis, Inc.**  
Pacific Seismic Company

### The Leader in Sub-Surface Information

#### Resources that Deliver the Difference

- Seismic available for immediate license
- Over 500,000 line miles of 2D & 3D data located in domestic United States (onshore & offshore)

#### Exclusive Opportunity 2006

##### Recently acquired seismic databases by Pacific Seismic Co.

- Chevron USA California, OXY USA Nationwide (including Arco & Enron)
- Santa Fe Energy, TXO, Cities Services Oil & Gas Nationwide
- Southern Pacific, PG&E / NGC, SOHIO
- Seventeen Newly Acquired 3D's Covering Northern & Southern California

#### 3D Seismic Acquisition Management

- J. Dwight Melancon – Dwight@dimensional.com

**Pacific Seismic Company**  
Your full-service Seismic Brokerage & Acquisition Company

Bakersfield  
Tel: 661.322.1171

Denver  
Fax: 661.322.1181

Tulsa

Houston  
Web Site: PACSEIS.com

curtisconway@arrival.net

kathysmith@arrival.net

## AAPG Officers for 2006 - 2007

---

President Peter R. Rose has announced the results of the Election of Officers. The final results included 6,237 returned ballots from 16,538 eligible members with an election participation rate of 37.7%.

President-Elect  
Term: 2006-2007

Willard R. Green  
(432) 685-0103  
wgreen@midland.edu

Vice-President  
Term: 2006-2007

John C. Dolson  
TNK-BP  
Moscow, Russia  
7 495 777 7707, x2057  
jcdolson@aol.com

Treasurer  
Term: 2006 - 2007

Randi S. Martinsen  
University of Wyoming  
Laramie, WY 82071-3006  
(307) 766-4858  
randmart@uwyo.edu

The officers will take office on July 1, 2006, joining

President  
Term: 2006-2007

Lee T. Billingsley  
(210) 490-4788, Ext. 104  
lbillingsley@abraxaspetroleum.com

Secretary  
Term: 2006-2007

J. Michael Party  
(432) 686-5971  
mparty@wbltd.com

HoD Chair  
Term: 2006-2007

Larry T. Jones  
(281) 493-1022  
ljones1239@houston.rr.com

Editor  
Term: 2006-2007

Ernest A. Mancini  
(205) 348-4319  
emancini@wgs.geo.ua.edu.

J.M. "BUZZ" DELANO, JR.  
Consultant

Cell (661) 747-0337  
Office (661) 832-5229  
Fax (661) 832-5229  
Email: BuzzBake@aol.com

### Delano Petrophysical Consulting Services

816 Ferdinand Ct.  
Bakersfield, California 93309

Dipmeter Analysis  
Tape Conversion Editing  
Expert Petrophysical Analysis  
Wellsite Supervision

Everett Stevenson  
Operations Coring Coordinator



INTEQ (Formerly Christensen Coring)

6117 Schirra Court  
Bakersfield, California 93313  
Tel: 661-834-9654, 800-366-9654  
Fax: 661-834-2450  
Pgr: 661-321-7156  
E-Mail: mark.pahler@inteq.com

# AAPG - Officer Candidates for 2007 - 2008

Advisory Council Chairman Patrick J. F. Gratton announces the 2007 - 2008 slate of Officer Candidates:

President-Elect  
Term: 2007-2008

Dr. Neil F. Hurley  
Colorado School of Mines  
Dept of Geology  
1615 Illinois Street  
Golden, CO 80401  
(303) 384-2128  
nfhurley@mines.edu

Dr. Scott W. Tinker  
Bureau of Economic Geology  
The University of Texas at Austin  
P.O. Box X, University Station  
Austin, TX 78713-8924  
(512) 471-0209  
scott.tinker@beg.utexas.edu

Regions  
Vice President  
Term: 2007-09

Mr. John R. Hogg  
ConocoPhillips Canada  
2100, Bow Valley Square IV  
250-6th Avenue S.W.  
Calgary, Alberta T2P 3H7  
Canada  
(403) 260-8313  
jhogg@br-inc.ca

Dr. John Kaldi  
Australian School of Petroleum  
University of Adelaide  
Adelaide, SA 5005  
Australia  
61 88 303-4291  
jkaldi@asp.adelaide.edu.au

Sections  
Vice President  
Term: 2007-08

Dr. John M. Armentrout  
Cascade Stratigraphics Inc.  
20060 SE Highway 224  
Damascus, OR 97089  
(503) 658-8797  
jarmenrock@msn.com

Dr. John B. Curtis  
Colorado School of Mines  
1516 Illinois Street  
Golden, CO 80401-4813  
(303) 273-3887  
jbcurtis@mines.edu

Secretary  
Term: 2007-09

Mr. Edward A. (Ted) Beaumont  
1444 South Boulder  
Tulsa, OK 74119-3604  
(918) 584-6664  
beaumont@aapg.org

Mr. Terence G. O'Hare  
Emeral Energy, LLC  
4925 Greenville Ave., Suite 755  
Dallas, TX 75206  
(214) 691-2399  
tgo@emeraldenergyllc.com

Editor  
2007-2010

Ms. Gretchen M. Gillis  
Schlumberger  
225 Schlumberger Drive, MD-2  
Sugar Land, TX 77478  
(281) 285-4947  
ggillis@sugar-land.oilfield.slb.com

Dr. Barry J. Katz  
Chevron  
1500 Louisiana  
Houston, TX 77002  
(832) 854-6989  
barrykatz@chevron.com

*Joseph F. Elliott*

**Geophysical Consultant**

**Exploration Management**  
international / domestic  
interpretations  
synthetics  
modeling

Office: (949) 240-1505

26801 Lariat Circle  
San Juan Capistrano, CA 92675

 **American  
Digitizing**

Kevin Patrick  
Digitizing Tech  
kevin@americandigitizing.com

David Patrick  
PDF Specialist  
david@americandigitizing.com

American Digitizing, LLC  
4800 Easton Dr. Suite #104  
Bakersfield, CA 93309

Have too much paper on your hands?

Let us digitize it for you!

WELL LOGS  
WELL HISTORIES  
CORE DATA  
DEVIATION SURVEYS



Call Today! 661-496-9639  
www.americandigitizing.com

# Pacific Section AAPG - 2006 Honors and Awards Winners

## PACIFIC SECTION CONVENTION MAY 9, 2006 ANCHORAGE, ALASKA



Martin Van Couvering Award

Rebecca Bailey  
Ed Brandlen  
Brad Burich  
Julia Cohen  
Alec Duncan  
Robert Miller  
Ann Maglio  
Jesse White  
Scott Kluever

Teacher of the Year Award

A. I. Levorsen Memorial Award

Jacob A. Covault

H. Victor Church Memorial Award

Paul G. Lillis, Ph.D.

Distinguished Educator Award

Rainer J. Newberry, Ph.D.

Distinguished Service Award

Michael S. Clark, Ph.D.

Honorary Life Membership Award

Arlen E. Ehm  
David M. Hite, Ph.D.  
Dalton F. Lockman

Corporate Award

BP Exploration (Alaska) Inc.  
ConocoPhillips Alaska, Inc.

**EPOCH**

Well Services, Inc.

3919 ROSEDALE HIGHWAY  
BAKERSFIELD, CA 93308

**LES COLLINS**  
WEST COAST SALES MANAGER

661-328-1595 MAIN  
661-635-1452 DIRECT  
661-328-1640 FAX  
661-978-3795 CELLULAR  
www.epochwellsite.com

E-MAIL: leslie.collins@epochwellservices.com

Lydia M. Hopps  
Associate Vice President  
Financial Advisor  
(800) 767-0170

Retirement Planning  
Asset Allocation Strategies  
Corporate Cash Management

Comprehensive Financial Planning

**Morgan Stanley**

lydia.hopps@morganstanley.com



## Pacific Section AAPG - 2006 Honors and Awards Winners



Martin Van Couvering Award  
R. Bailey, E. Brandlen, B Burich, J. Cohen, A. Duncan, R. Miller,  
A. Maglio, and J. White



Distinguished Educator Award  
Rainer J. Newberry, Ph. D. and Joan Barminski



A. I. Levorsen Memorial Award  
Jacob Covault and Joan Barminski



Honorary Life Membership  
Arlen Ehm, Bob Lindblom, and Joan Barminski



H. Victor Church Memorial Award  
Paul G. Lillis, Ph.D. and Joan Barminski



Honorary Life Membership  
David Hite, Bob Lindblom, and Joan Barminski

## Pacific Section AAPG - 2006 Honors and Awards Winners



Honorary Life Membership  
Dalton Lockman, Bob Lindblom, and Joan Barminski



Corporate Award  
BP Exploration (Alaska) Inc.  
Sandy Phillips, and Joan Barminski



AAPG President Pete Rose and  
Pacific Section AAPG President Joan Barminski

### AAPG Annual Convention & Exhibition Understanding Earth Systems Pursuing the Checkered Flag

April 1- 4, 2007 • Long Beach, CA

Call for Papers



**AAPG ANNUAL CONVENTION & EXHIBITION  
UNDERSTANDING EARTH SYSTEMS  
PURSUING THE CHECKERED FLAG**  
APRIL 1-4, 2007 \* LONG BEACH, CA



**Abstracts Due  
September 27, 2006**  
Submit your abstracts online at  
[www.aapg.org/longbeach](http://www.aapg.org/longbeach)

**Priority Exhibit Space  
Deadline is October 13.**  
[www.aapg.org/exhibits/longbeach](http://www.aapg.org/exhibits/longbeach)

Maximize your AAPG investment by sponsoring  
an event, item or publication, or by advertising  
in the official program book!



Abstracts: [www.aapg.org/longbeach](http://www.aapg.org/longbeach)  
Exhibitors: [www.aapg.org/exhibits/longbeach](http://www.aapg.org/exhibits/longbeach)



## Pacific Section AAPG - News In Brief

---

The PSAAPG Executive Committee will be meeting on July 21 in Carpinteria at Venoco's offices, from 1:00 - 4:00 PM. The meeting is open to the membership.

Earth Science Week is October 8-14, 2006. The American Geological Institute announced the theme as "Be a Citizen Scientist!". More information is on web at <http://earthscienceweek.org>. The Pacific Section reminds its affiliated societies that it will match, up to \$250, efforts by the local societies in connection with Earth Science Week activities. Simply send in a request, with justification, and it will be duly considered. We fully support educational outreach in our communities, and this is a great opportunity to do it. One way is to purchase AGI's Earth Science Week kits and distribute to teachers. Every society is encouraged to participate in some way during Earth Science Week.

Congratulations to John Armentrout, of the Northwest Energy Association, who is running for the national AAPG office of Vice President (Sections).

AAPG Foundation 2006 Grant-In-Aid Recipients were recently announced, including several outstanding students from the Pacific Section arena.

Elizabeth Cassel, Stanford University, "Cenozoic Growth and Evolution of High Topography in the Northern Sierra Nevada, California"

Kristin Hepper, University of California, Riverside, "The Evolution of Great Valley Group Hydrocarbons and Their Relationship to Temporally and Spatially Disparate Hydrocarbon Seep Localities, Northern California"

Robert Kervin, California State University, Fullerton, "Sequence Stratigraphy and Paleokarst Evolution of the Ordovician Antelope Valley Limestone Near Beatty, Nevada"

Rebecca Missler, University of Alaska Fairbanks, "Combining Magnetic Susceptibility with Traditional Lithostratigraphy, Biostratigraphy, and Sequence Stratigraphy to Improve the Stratigraphic Resolution of Upper Devonian Carbonates in Western Canada"

Jesse Mosolf, UCLA, Detrital Record of Rapid Neogene Exhumation of the Cordilleran Real, Bolivia"

The 2007 AAPG Annual Convention and Exhibition is April 1 - 4, 2007, in Long Beach, California. Mark your calendars now to attend. Understanding Earth Systems, Pursuing the Checkered Flag is the convention theme, with abstracts due September 27, 2006. Explore the web at [www.aapg.org/longbeach/](http://www.aapg.org/longbeach/) for the most up-to-date details on sessions and the online abstract submission process.

### **DAVID B. DEL MAR**

**Consulting Petroleum Geologist**  
**California Registered Geologist #634**

**Development – Thermal EOR – Property Reviews**

2027 Park Drive  
Los Angeles, CA 90026

H (323) 664-3358  
[dbdelmar@earthlink.net](mailto:dbdelmar@earthlink.net)

## ***RMAG / DAPL / DGS IPAMS / SPE***

### **Prospect Fair and Techofest**

**Monday, October 30, 2006  
at the  
Colorado Convention Center  
Denver, Colorado**

**Exhibit for \$400 - Attend for \$25  
Includes Lunch in Exhibit Hall  
Sponsor or Advertise from \$150 to \$1000**

**Information available at:**

**[www.rmag.org](http://www.rmag.org)**

**or**

**303 • 573 • 8621**

#### **GREGORY GEOLOGICAL SERVICES**

**Glenn J. Gregory**  
Calif. Reg. Geol. #3676

(661) 663-8542 Phone/Fax (661) 633-5555  
8804 O'Meara Court 4800 Easton Drive, Suite 101  
Bakersfield, CA 93311 Bakersfield, CA 93309  
[glenng@bak.rr.com](mailto:glenng@bak.rr.com)

#### **Geolog**



**GEOLOGICAL LOGGING INC.**  
8270 Belvedere Ave. Ste. 120  
Sacramento, CA 95826  
Telephone 916-452-9570  
Cel 952-8975 Fax 452-9573  
[geolog@sbcglobal.net](mailto:geolog@sbcglobal.net)

**ERNIE BURROUGHS**  
President / Owner  
Registered Geologist No. 1628

# SAVE THE DATE

**Hurry, limited to the first 144 players!!!**

**8th ANNUAL  
JOHN WOOLLEY MEMORIAL  
GOLF TOURNAMENT & BBQ  
PROVIDING SCHOLARSHIPS THROUGH  
COAST GEOLOGICAL SOCIETY  
(an affiliate of Pacific Section AAPG)**



**Elkins Ranch Golf Course  
1386 Chambersburg Road  
Fillmore, CA 93015  
(805) 524-1440**

**Friday, October 13, 2006**

**TEXAS SCRAMBLE, Check-in 9:30 am, Shotgun start 11:30 am**

**Golf – \$100/person (Box Lunch & BBQ Dinner included) // BBQ Only – \$20**

**Mulligans and raffle tickets available for purchase – BIG PRIZES**

**Raffle & Awards to follow tournament at the BBQ**

**Multiple Sponsorship Levels Available**



**For More Information // To Save Your Spot, email:**

**[golf@coastgeologicalsociety.org](mailto:golf@coastgeologicalsociety.org)**

**or**

**Go To:**

**[www.coastgeologicalsociety.org](http://www.coastgeologicalsociety.org)**

# San Joaquin Geological Society

## San Joaquin Well Logging Society

## Annual Fall Barbecue and Golf Scramble

**Friday, September 8, 2006**



## *Family BBQ and Raffle at the Kern County Museum*

**Onsite BBQ Featuring Tri Tip and all the Fixin's**

Happy Hour at 5:00 PM      Dinner at 6:00 PM

**RSVP: Only \$15.00    At the Gate \$18.00    Students \$7.50    Children \$5.00**

**Please RSVP by Tuesday, September 5, 4:00 PM – Save \$ - Help the Planners**

**BBQ RSVP and Questions: Tracey\_Fleming-Reese@oxy.com, (661) 763-7523**

## Cut on Line and Mail In Golf Reservation

### *Golf Tournament*

## Kern River Golf Course

### 8:00 AM – First Tee Time

**\$50.00/ Person Includes:**

**Green Fee, Cart, Lunch, BBQ, Polo  
Shirt, and Prizes**

### Reservation Deadline

**September 1, 2006**

Golf Questions: Bryan Bell, [bryan.bell@corelab.com](mailto:bryan.bell@corelab.com) or Phone: (661) 325-5657

## Registered Players

**Golf \$    Shirt Size**

## Affiliation

Golfer 1 \_\_\_\_\_

SJGS/SEG/SJWLS

Golfer 2 \_\_\_\_\_

\_\_\_\_\_

SJGS/SEG/SJWLS

Golfer 3 \_\_\_\_\_

---

SJGS/SEG/SJWLS

**Golfer 4** \_\_\_\_\_

---

SJGS/SEG/SJWLS

Total \$

---

Preferred Starting Time: \_\_\_\_\_

Contact email: \_\_\_\_\_ Contact Phone: \_\_\_\_\_

Contact Phone: \_\_\_\_\_

**Return Form and Checks to: *Golf Reservation, SJGS, P.O. Box 1056, Bakersfield, CA 93302***

## Traveler's Log - Kuparuk Field Trip

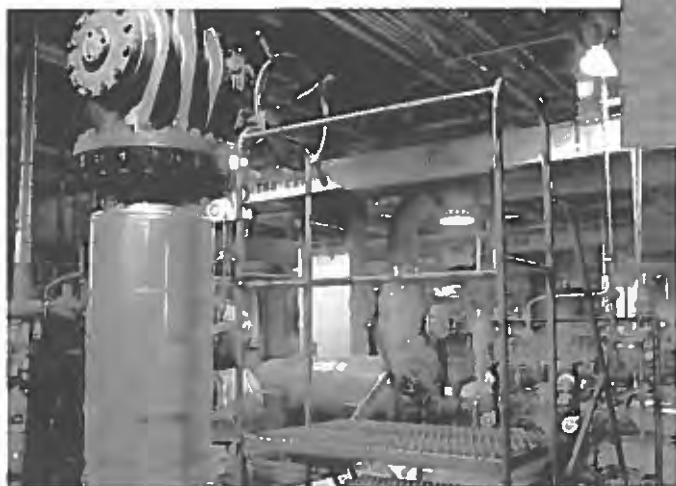
THANKS ConocoPhillips - and to the many people who made it possible...





## Traveler's Log - Kuparuk Field Trip

---



### **Ernest K. Espenscheid April 28, 1933 - April 20, 2006**

Ernest K. Espenscheid, longtime exploration geologist for Chevron, passed away at his home in Danville, California, on April 20th, 2006, after a two years long battle with cancer. Had he lived, he would have been 73 on April 28th. Ernie was a first generation American, born to young German emigrants who had left Germany in the late nineteen twenties. He was born and lived his youth in the Los Feliz/ Highland Park area of northern greater Los Angeles, where he enjoyed wandering the hills of Griffith Park. Rock collecting there probably doomed him later to become a geologist. He was an only child, but had the benefits of a large extended family of native Germans, some of whom were relatives, who had emigrated to the United States at the same time as his parents. After high-schooling in Highland Park, he attended close-by Occidental College to obtain a BA in Geology. Following that, and a Masters Degree in Geology earned at the University of Wyoming, he joined the Exploration Department of then Standard Oil Company of California, in Bakersfield in October, 1956. After a training regimen typical for young geologists, he was promoted in 1967 to District Supervisor, responsible for all exploration in the Sacramento Valley. A brief assignment to Chevron Overseas Petroleum followed, and then, in 1973 he was given the task, as District Supervisor, of evaluating Arctic National Wildlife and Native Regional lands in Northern Alaska. In 1982 he acted as Assistant to the General Manager of Exploration, Chevron Western Region, for one year, and, in 1983, was promoted to Exploration Manager of Chevron's Alaska Division. In 1990 he transferred to Chevron Overseas Petroleum, where he worked on project evaluation and served as exploration advisor to the Indonesian operation until he retired in 1996, after completing forty years with Chevron.

Ernie loved to travel and, before and after retirement, saw a good deal of the world up close, with his longtime companion, Jane Bolton. Ernie's generous nature and candor won him a legion of loyal friends and he will be sadly missed for his forthright view of things, his honesty, and his very principled approach to life. He is survived by his longtime companion, Jane Bolton, daughters, Ann and Krista, of southern California, and son, Eric, who lives in Florida. (by Jim Parkinson)

### **Donald Frederick Towse December 5, 1924 - April 16, 2006**

Donald Towse was 81 and had no intentions of slowing down. He dived out of a plane last year for his birthday, ran marathons and hiked through jungles. In fact, he often talked about how he planned to turn 100 and have a huge party to celebrate. And it was with this *carpe diem* spirit that the retired San Jose geologist embarked on a recent cruise to Panama and Costa Rica, where he jumped at the chance to go snorkeling when the morning's activities were announced.

He also traveled the world. He held a doctorate in geology from the Massachusetts Institute of Technology and was always in search of oil and minerals. From the late 1950s to the early 1970s, he worked for now-defunct Kaiser Aluminum, which sent him to Brazil for two years. He also traveled the United States, Canada, South America, Indonesia, Vietnam and Madagascar.

In 1960, he was transferred to the company's Cupertino office, and he moved his family to San Jose. In 1985, he took a job with the Lawrence Livermore National Laboratory doing engineering geology and energy economics studies, including seismic hazard investigations for new facilities sites. He retired from there in 1990. Mr. Towse was also active with the American Association of Petroleum Geologists, which he joined in 1949, and donated to the group's Energy Minerals Grant for geology students.

He and his wife, whom he married in 1945, shared in raising the couple's six children -- three of whom died as adults in separate tragedies. He is survived by: Wife, Marjorie Towse of San Jose; son and daughter-in-law, Lincoln and Joy Towse of Brentwood; daughter, Robin Towse of Soquel; daughter and son-in-law, Sally Towse and Burt Kendall of San Francisco.

## Data Determines Direction.

### How good is yours?

Any laboratory can generate data from core samples. But when that data is being used to determine your company's next move, it had better be accurate.

At OMNI Laboratories, we have refined the science of gathering information from core and we have sharpened the art of evaluating it. Our facilities are on the cutting edge. Our proprietary technologies provide comprehensive profiles of rocks and reservoirs. And our staff of scientists is simply unsurpassed.

The result? You get precise data plus trustworthy interpretations. So that the decision you make...the direction you take...is exactly where you need to go.

### At OMNI, We've Got The Answers.

**OMNI**  
Laboratories, Inc.

Ten locations in the U.S. and South America • Headquarters: Houston, TX • 832-237-4000 • [www.omnilabs.com](http://www.omnilabs.com)

## News from our Member Societies

---

Alaska Geological Society  
www.alaskageology.org

P. O. Box 101288  
Anchorage, AK 99510

Contact: Kristine Crossen  
afkjc@uaa.alaska.edu



Luncheon meetings are held monthly September through May, usually on the third Thursday of the month, at the Anchorage Hilton (500 W. 3rd Avenue) from 11:30 a.m. to 1:00 p.m. The cost is \$17 (members with reservations) or \$20 (members without reservations and nonmembers). For reservations, call the AGS reservation voice mail at 907-646-7106 or contact **Edna Beuhler** at [edna.beuhler@encana.com](mailto:edna.beuhler@encana.com) by noon on Monday before the meeting.

2006 - 2007 Officers - TBA

Coast Geological Society  
www.coastgeologicalsociety.org

P. O. Box 3055  
Ventura, CA 93006

Contact: Shaun Simon  
805.495.2197



Dinner meetings are held monthly September through June, usually on the third Tuesday of the month, at the Veterans of Foreign Wars Hall at 3801 Market Street in Ventura. Social hour starts at 6:00 p.m., dinner is served at 7:00 p.m., and the talk starts at 8:00 p.m. The cost of dinner is \$15 (with reservations), \$18 (without reservations), or \$8 (students and K-12 teachers); the talk is free. For reservations, contact **Dave Brown** at 805.653.7975 or make reservations online at [www.coastgeologicalsociety.org](http://www.coastgeologicalsociety.org). Reservations should be made by 4:00 p.m. on Friday before the meeting.

### 2005 - 2006 Officers

President:	Shaun Simon	805.495.2197	<a href="mailto:president@coastgeologicalsociety.org">president@coastgeologicalsociety.org</a>
Vice President:	Greg Millikan	805.766.2040	<a href="mailto:vpresident@coastgeologicalsociety.org">vpresident@coastgeologicalsociety.org</a>
Treasurer:	John Minch	805.682.4711 x137	<a href="mailto:treasurer@coastgeologicalsociety.org">treasurer@coastgeologicalsociety.org</a>
Secretary:	John Harris	805.407.7664	<a href="mailto:harris@numericssolutions.com">harris@numericssolutions.com</a>

### 2006 - 2007 Officers Candidates:

President:	John Minch	805.682-4711, ext 137
Vice President:	Greg Millikan	805.766.2040
Treasurer:	Open	
Secretary:	Susan Bartz	805.682.4711

CGS will vote on 2006-2007 officers at the September 19, 2006 meeting. 2006-2007 officers will begin serving in October 2006.

---

### Advertising Rates

Members	Single issue	Year (6 issues)
Full Page	\$400.00	\$1600.00
Half Page	\$250.00	\$1050.00
Quarter Page	\$150.00	\$650.00
Business Card	\$250.00	

### Societies Free Advertising

Conventions Societies	Unlimited Space 1/4 page	PS-AAPG Newsletter AAPG Explorer
--------------------------	-----------------------------	-------------------------------------

## News from our Member Societies

Los Angeles Basin Geological Society  
www.labgs.org

515 So. Flower Street, Ste 4800  
Los Angeles, CA 90071

Contact: Jon Kuespert  
213.225.5900 x224



Luncheon meetings are held monthly September through November and January through June, usually on the third or fourth Thursday of the month, in the Monarch Room at The Grande at Willow Street Conference Centre (4101 E. Willow Street) in Long Beach. Lunch is served at 11:30 a.m., and the talk starts at 12:15 p.m. The cost is \$20 (with reservations), \$25 (without reservations), or \$5 (students). Reservations can be made online at [www.labgs.org](http://www.labgs.org) or by contacting **Ivan Aburto** at [iaburto@breitburn.com](mailto:iaburto@breitburn.com) or 213-225-5900 ext. 234. Reservations should be made by Tuesday before the meeting.

2006 - 2007 Officers - TBA

Northern California Geological Society  
www.ncgeolsoc.org

9 Bramblewood Court  
Danville, CA 94506-1130

Contact: David Bero  
[dbsquare@earthlink.net](mailto:dbsquare@earthlink.net)



Evening meetings are held monthly September through May, usually on the last Wednesday of the month, at the Masonic Center (9 Altarinda Road) in Orinda. Social hour starts at 6:30 p.m., and the talk starts at 7:00 p.m. (no dinner). The cost is \$5. For reservations, contact **Dan Day** at 925-294-7530 (leave your name on the voice recorder any time before the meeting).

2006 - 2007 Officers - TBA

Northwest Energy Association  
[dlgellar@msn.com](mailto:dlgellar@msn.com)

P. O. Box 6679  
Portland, OR 97228-6679

Contact: James Jackson  
503-771-3887



Luncheon meetings are held monthly October through May, usually on the second Friday of the month, at the Multnomah Athletic Club (1849 SW. Salmon Street) in Portland. The meeting starts at 1:00 p.m. The cost is \$15. For information or reservations, contact **Shelley Thomas** at 503-848-2947 or **Treck Cardwell** at 503-226-4211 ext. 4681.

2006 - 2007 Officers  
President

Jamie Schick

(503) 948-7726

Remaining Officers: TBA

Sacramento Petroleum Association

P. O. Box 571  
Sacramento, CA 95812-0571

Contact: Rick Blake  
925-422-9910



Luncheon meetings are held monthly January through November, on the third Wednesday of the month at the Hungry Hunter Restaurant (450 Bercut Drive) in Sacramento. The meetings start at noon. The cost is \$16. For information or reservations, contact **Pam Ceccarelli** at 916-322-1110 or [pceccare@consvr.ca.gov](mailto:pceccare@consvr.ca.gov).

2006 - 2007 Officers

President:

Rick Blake

[blake2@llnl.gov](mailto:blake2@llnl.gov)

Vice President:

Marc Brennen

[marc.brennen@halliburton.com](mailto:marc.brennen@halliburton.com)

Secretary/Treasurer/Editor

Pam Ceccarelli

[Pam.Ceccarelli@conservation.ca.gov](mailto:Pam.Ceccarelli@conservation.ca.gov)



## News from our Member Societies

San Joaquin Geological Society  
[www.sjgs.com](http://www.sjgs.com)

P. O. Box 1056  
Bakersfield, CA 93302

Contact: Rob Negrini  
[megrini@csub.edu](mailto:megrini@csub.edu)



Dinner meetings are held monthly October through June, usually on the second Tuesday of the month, at the American Legion Hall (2020 H Street) in Bakersfield. The icebreaker starts at 6:00 p.m., dinner is served at 7:00 p.m., and the talk starts at 8:00 p.m. The cost of dinner is \$15 (with reservations) or \$18 (without reservations); the talk is free. For reservations, contact **Jonathan Lange** at 661-664-7644 or [jlange@chevron.com](mailto:jlange@chevron.com).

### 2006 - 2007 Officers

President:

Bill Scanlan

[wscanlan@bak.rr.com](mailto:wscanlan@bak.rr.com)

President- Elect:

Dave Miner

[dmminer@acraenergy.com](mailto:dmminer@acraenergy.com)

Vice President:

Jonathan Lange

[JLange@chevron.com](mailto:JLange@chevron.com)

Secretary:

Tracey Fleming-Reese

[tracey\\_fleming-reese@oxy.com](mailto:tracey_fleming-reese@oxy.com)

Treasurer:

Linda Specht

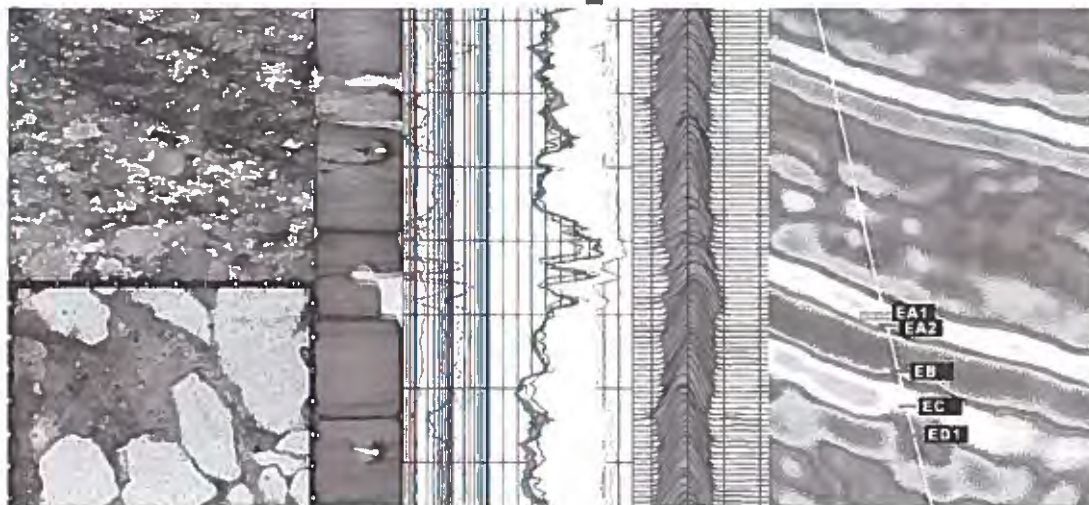
[linda.specht@corelab.com](mailto:linda.specht@corelab.com)

Past-President

Rob Negrini

[megrini@csub.edu](mailto:megrini@csub.edu)

# Reservoir Optimization



Core Laboratories, Inc.  
3430 Unicorn Road  
Bakersfield, CA 93308  
(661) 392-8600  
(661) 392-0824

E-mail: [corebak@ix.netcom.com](mailto:corebak@ix.netcom.com)

Core Laboratories, Inc.  
600 W. 58th Ave., Unit D  
Anchorage, AK 99518  
(907) 349-3541

[www.corelab.com](http://www.corelab.com)

**PACIFIC SECTION  
AMERICAN ASSOCIATION OF PETROLEUM GEOLOGISTS**

**2006 - 2007 OFFICERS**

**President**

Mike Wracher

805.745.2272

mwracher@venocoinc.com

**President-Elect**

Jonathan Kuespert

213.225.5900 x224

jkuespert@breitburn.com

**Vice President**

Michael Ponek

661.654.7342

mponek@chevron.com

**Secretary**

Randall Stephenson

661.869.8043

Randall\_Stephenson@oxy.com

**Treasurer**

Melissa Kolb

661.763.6481

mmkolb@bak.rr.com

**Past President**

Joan Barminski

805.389.7509

joan.barminski@mms.gov

---

**NEWSLETTER STAFF**

**Editor**

Karen Blake

661.395.5214

kblake@plainsxp.com

**Advertising Coordinator**

Karen Blake

661.395.5214

kblake@plainsxp.com

**Geological Coordinator**

Frank Cressy

661.323.6828

fcressy@prodigy.net

**Website Coordinator**

Hana Baker

hanabaker@chevron.com

**MEMBERSHIP/SUBSCRIPTIONS**

**Membership Chair**

Mark Yarlot

661.616.3851

mey@bry.com

**PUBLICATIONS**

**Publications Chair**

Larry Knauer

661.392.2471

larryknauer@chevron.com

Pacific Petroleum Geologist Newsletter is published bimonthly by the Pacific Section of the American Association of Petroleum Geologists, P. O. Box 1072, Bakersfield, CA 93302; [www.psaapg.org](http://www.psaapg.org) (website); [psaapg@psaapg.org](mailto:psaapg@psaapg.org) (e-mail).

Membership dues (including subscription) are \$12 per year. Membership inquiries and change of address should be directed to the Membership Chair.

Articles, news about members and events, and other items of interest to our members are encouraged and should be sent to the Editor. Geological articles should be sent to the Geological Coordinator.

Memorial notices, articles, and photographs should be sent to the Editor. Materials may be condensed to accommodate newsletter space constraints and will be returned upon request.

Members with opinions or suggestions regarding our conventions, publications, newsletter, or other items of interest to our members are encouraged to share their views and ideas by sending letters to the Editor. All letters will be shared with the Executive Committee, and those with relevant and timely content will be published in the newsletter; letters may be condensed to accommodate newsletter space constraints.

Advertising inquiries should be directed to the Advertising Coordinator.

**The submission deadline for the September & October 2006 issue is August 15, 2006.**

The newsletter is accessible at [www.psaapg.org](http://www.psaapg.org).

User: [psaapg](mailto:psaapg)  
Password: [loidier](mailto:loidier)

**Contributors to This Issue**

Joan Barminski  
Larry Knauer  
Jim Parkinson  
Karen Blake



PACIFIC SECTION AAPG  
P. O. Box 1072  
BAKERSFIELD, CA 93302

PRESORTED  
STANDARD  
U.S. POSTAGE PAID  
BAKERSFIELD, CA  
PERMIT NO. 1163