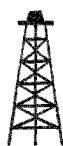


Pacific Petroleum Geologist



NEWSLETTER

Pacific Section • American Association of Petroleum Geologists

January & February • 2006

Message from the President

The Pacific Section is as diverse as they come. We are one of six sections of the national AAPG; besides the Pacific, there are the Rocky Mountain, Southwest, Mid-Continent, Gulf Coast, and Eastern Sections. Our Pacific Section stretches from the Aleutian Islands of Alaska all the way to the sands of San Diego, and reaches to the Pacific islands of Hawaii. We cover five states, but just look at the different types of states those are: Alaska, California, Hawaii, Oregon and Washington. Each one has very distinct geography, culture and climate.

The Pacific Section is strong and innovative, leading the way in collaboration and connection with other professional societies. Our strength lies not only in our numbers but in the strength and resilience of our local societies. We also possess a great strength in the willingness we have to work with others to accomplish mutual goals. We are spread out all along the Pacific coast, and yet we manage year after year to collectively meet and share knowledge and experience at our annual conventions. And we have forged a path with the SPE and GSA for joint conventions that has become a national model for success.

Part of AAPG's strategic plan is to become a truly international organization. Initial steps to accomplish this goal involved the formation of six international regions: Canada, Latin America, Europe, Africa, Middle East, and Asia Pacific. We could, at this juncture, work as a catalyst within AAPG by fostering a relationship with one of these international regions. The concept is something akin to sister cities, and AAPG is encouraging connections like this.

We have a golden opportunity to build on our strong points by broadening our base and becoming more global in our outlook. The Pacific Section in many respects is very similar to an international section. We touch on the Asian continent to the north, span the western coast of Canada in our mid-section, and reach to the Latin Ameri-

can region as we stretch south toward Mexico. Our Section has a great strength in the diversity of its members, in the oil and gas we find in remote Alaska to downtown Los Angeles – different areas, different geology, different environmental issues, different neighbors, different attitudes, and most of all, different people. We are almost an international organization in our own right.

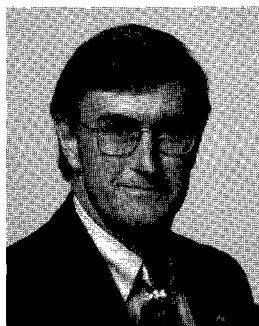
Expanding our sphere to the international arena would do wonders to forward the goals of AAPG abroad. An outstretched hand from the Pacific Section to the Asia Pacific Region, as one possibility, would create a circum-Pacific connection, a ring of fire that would light the way into the future. We can ride this wave, and we would do it in style. Getting ahead of the curve is one of our strong suits, so here is my proposal for your consideration: Let's get connected now with an international region, and strike a strong sister-organization relationship.

If you have thoughts to share on this idea, email me at joan.barminski@mms.gov, or email on the site at www.psaapg.org. The Executive Committee will discuss this over the next few months. Let's have a dialogue now, as AAPG moves toward a greater variety of members, more dynamic participation, and increased focus on the future as the 21st century unfolds. We'll be helping to lead the way and I think we'll have a great time doing it. To all in the Pacific Section, may the holidays bring joy and peace to your lives, and may 2006 be a year full of promise for one and all.

- Joan Barminski
President, 2005-2006

In This Issue

AAPG House of Delegates Donald D. Clarke	2
Fault Interactions - Mark R. Legg, Part I	4
Buena Vista Museum - Koral Hancharick	6
Traveler's Log - North to Alaska!	7
Convention News	8
Member News	12
AAPG & Member Societies News	16



What is Ahead for the House of Delegates? Don Clarke, Chairman of the House of Delegates



AAPG is changing. And it will continue to change in order to meet our needs as petroleum geologists. Many are not aware that the makeup of the membership has changed. Early in AAPG history Tulsa, Oklahoma was the "Oil Capital of the World". AAPG established its headquarters there. That has long since changed. Houston is the current "Oil Capital of the World." Most of the big oil companies were United States based. Now the Big companies like Royal Dutch Shell and BP are foreign based. Accordingly our membership has changed with roughly one third of the AAPG members living out side of the United States.

The AAPG political structure is in the process of change also. The composition of the Advisory Council better represents the total membership while retaining the experience of past AAPG presidents for continuity. The House of Delegates membership has also changed to reflect these changes. In fact John Hogg and George Eynon both from Canada have been Chairmen of the House. The Executive Committee

which is mostly populated by elected geologists who were nominated and selected through the Advisory Council to stand for election. This political structure has evolved over many years and in my opinion works very well. That does not mean that it is perfect. The system has been perceived to fall short occasionally and in some cases geologists have felt that the candidates put forward for office are not strong enough. The results were petition candidates. The system still worked. A petition candidate was elected to office.

There have been many complaints that the process to petition candidates is a form of campaigning. One or more nationally elected officers were actively seeking signatures for a petition candidate. This "inappropriate" behavior of national officers should be stopped. Or should it? It has been observed that the behavior is unbecoming of an officer who should appear to be neutral. It could also be divisive in the organization. So what should we do? Legislate a stop to this? I am aware of nothing in the Constitution and Bylaws that limit this activity. It seems to me that this is not a

Lydia M. Hopps
Associate Vice President
Financial Advisor
(800) 767-0170

Retirement Planning
Asset Allocation Strategies
Corporate Cash Management

Comprehensive Financial Planning

Morgan Stanley

lydia.hopps@morganstanley.com

Kevin Patrick
Digitizing Tech
kevin@americandigitizing.com

David Patrick
PDF Specialist
david@americandigitizing.com

American Digitizing, LLC
4800 Easton Dr. Suite #104
Bakersfield, CA 93309

American Digitizing

Have too much paper on your hands?

Let us digitize it for you!

WELL LOGS
WELL HISTORIES
CORE DATA
DEVIATION SURVEYS

Call Today! 661-496-9639
www.americandigitizing.com



David Patrick

legislative function but a code of conduct issue. I would like to see this given to the Division of Professional Affairs. Specifically how should an AAPG officer act? Let them also state why it is important to act in a given way. AAPG has politics and every candidate is instructed in how to act while standing for office. We have all seen candidates overstepping their bounds in order to win. These transgressions should be noted and addressed on a case by case basis. Who should do this, the "polite police"? What is the penalty for a candidate or officer who ignores these warnings? This is an Executive committee function in my opinion. The Executive Committee should decide the sanction, if necessary for each case. Obviously, if the transgression involves a member of the Executive Committee that individual will abstain from voting. What are your feelings on this?

The International Regions are in trouble. The members are globally decentralized and often live in impoverished countries. Are there more of them who would like to become members but they can't because of geography or cost? Can we help them? First I must point out that AAPG is the premier professional organization for the petroleum geologist worldwide. It is through AAPG that we share ideas, train, publish, connect with service companies. AAPG exists to serve our needs. Now one third of us are international and it is felt that the international portion may be having a difficult time getting fair value for their dollar. To remedy this and also make AAPG more attractive to new international members AAPG President Pete Rose has suggested a graded dues schedule based on the economic well being of the nation of residence for the member or potential member. The reduced membership fee would encourage membership. This would initially cost AAPG about \$56,000 per year according to AAPG Executive Director Rick Fritz. That works out to about three dollars each from the rest of us. As more people sign up at the lower cost the more it will cost the rest of us. This will be seed money invested to strengthen AAPG's future by bringing into the fold new members who will add greatly to the organization. Is it legal to vary the dues structure? The House is looking into this right

EPOCH

Well Services, Inc.

3919 ROSEDALE HIGHWAY
BAKERSFIELD, CA 93308

LES COLLINS

West Coast District Manager

661-328-1595 OFFICE

661-635-1452 DIRECT

661-328-1623 FAX

661-398-6970 CELLULAR

www.epochwellsite.com WEBSITE

E-MAIL leslie.collins@epochwellservices.com

Joseph F. Elliott

Geophysical Consultant

Exploration Management

international / domestic

interpretations

synthetics

modeling

Office: (949) 240-1505

26801 Lariat Circle
San Juan Capistrano, CA 92675

now. We have a lot to accomplish this year. These changes will impact the Pacific Section for years to come. I would appreciate your thoughts on this.

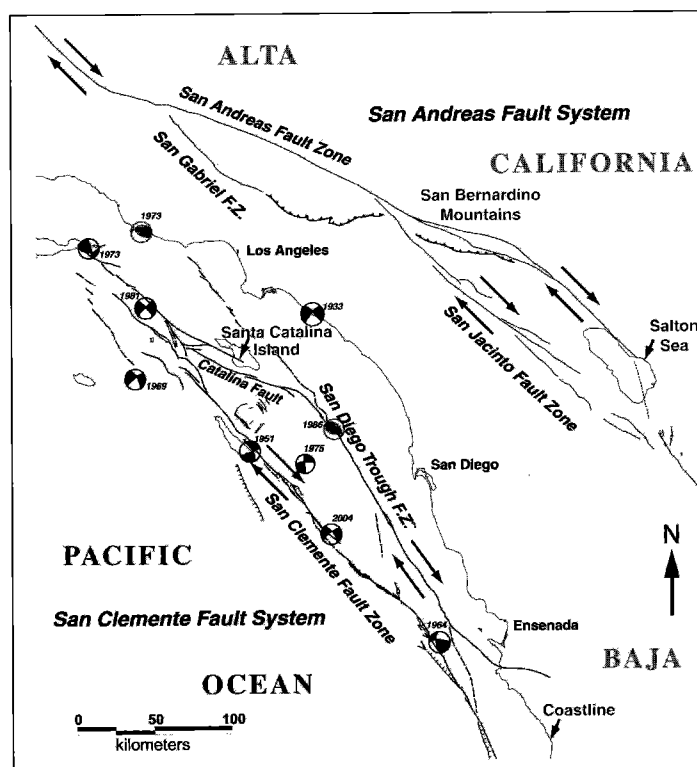
One last thought. Is it time that we set up an international umbrella organization to represent all petroleum geologists? AAPG could be affiliated or AAPG could morph into this organization. I would like to see AAPG put up the seed money for this and then become an affiliate. That way AAPG would have the best chance to build a strong umbrella society. I do not want to see the American taken out of the American Association of Petroleum Geologists. What do you think?



Fault Interaction within Major Strike-Slip Fault Restraining Bends in Southern California:

3-D Geometry and Deformation History of the Santa Catalina Island Restraining Bend (Part I)

Mark R. Legg, Legg Geophysical
Huntington Beach, CA 92647



The San Andreas and San Clemente fault systems comprise the two major transform fault systems of the Pacific-North America tectonic plate boundary. The San Andreas Fault system is the locus of Recent dextral transform movement; the San Clemente fault system was the locus of Miocene movement. Middle Miocene oblique rifting of the North American continental margin, where the East Pacific Rise first reached the continent and Pacific-North America tectonic interaction began, formed the California Continental Borderland as a submarine basin-and-range. Vertical strike-slip faults formed above initial low-angle oblique normal faults within the Inner Borderland Rift, to accommodate the lengthening and widening transform plate boundary. Changing relative plate motion vectors combined with capture of Baja California by the Pacific Plate shifted the locus of plate motion inland to the San Andreas Fault system.

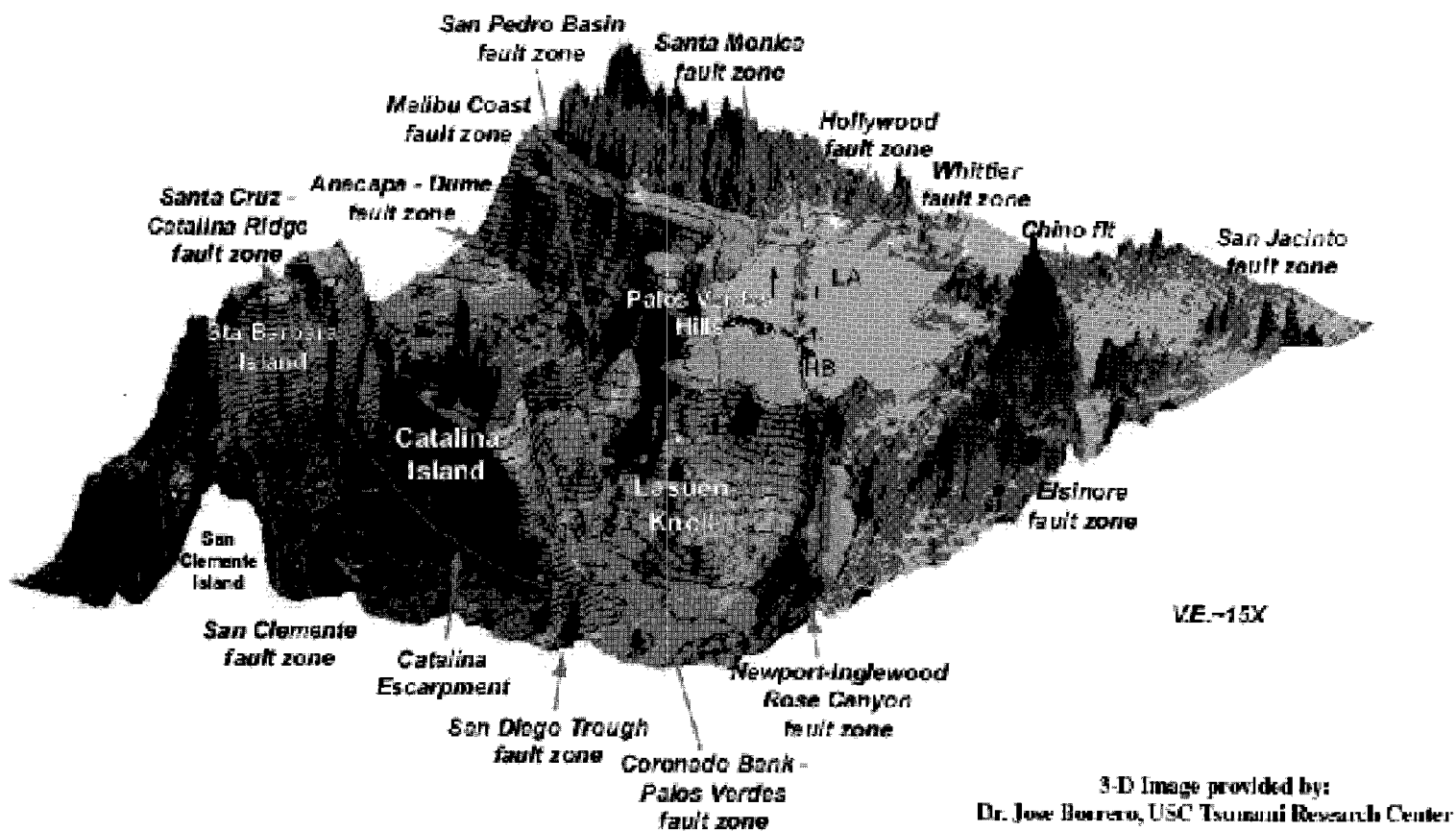
Two Major Fault Systems of the PAC-NOAM Transform Plate Boundary in Southern California



GEOLOGICAL LOGGING INC.
8270 Belvedere Ave. Ste. 120
Sacramento, CA 95826
Telephone 916-452-9570
Cel 952-8975 Fax 452-9573
geolog@sbcglobal.net

ERNIE BURROUGHS
President / Owner
Registered Geologist No. 1628

3-D View of Santa Catalina Island Restraining Bend Inner Borderland and Los Angeles Basin Region



3-D Perspective view of the Inner Borderland and Los Angeles Basin region showing major restraining bend “pop-up” structures including: Santa Catalina Island, Lasuen Knoll, Palos Verdes Hills, and transpressional Santa Cruz-Catalina Ridge. Small pop-ups are apparent along the Newport-Inglewood fault zone cutting across the Los Angeles Basin, and include Signal Hill, Dominguez Hills, Baldwin Hills, and Beverly Hills. The Puente-Chino Hills area along the Elsinore-Whittier fault zone is also considered here to be a major restraining bend pop-up. In contrast, Lake Elsinore is a well-defined releasing step-over, pull-apart basin, located just below the Elsinore Mountains. The large scale of the Santa Catalina Island restraining bend pop-up is apparent, and compares with the San Bernardino Mountains segment of the San Andreas Fault. Large earthquakes along this

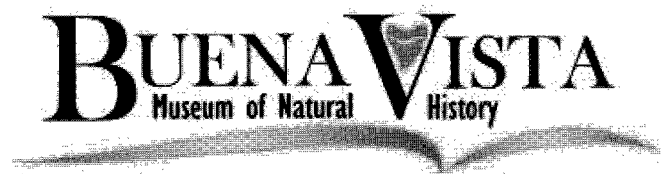
fault segment could be destructive to coastal southern California urban areas and uplift of the submarine island platform would generate a local tsunami that could compound coastal devastation (Legg, Borrero, and Synolakis, 2004). [end of Part I]

Everett Stevenson
Operations Coring Coordinator



INTEQ (Formerly Christensen Coring)

6117 Schirra Court
Bakersfield, California 93313
Tel: 661-834-9654, 800-366-9654
Fax: 661-834-2450
Pgr: 661-321-7156
E-Mail: mark.pahler@inteq.com



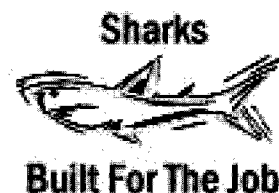
Buena Vista Museum of Natural History's (BVMNH) began in 1995 as a small exhibit at California Living Museum (CALM). Through the years the BVMNH has grown tremendously every year. Today the exhibits are housed in a 14,000 square foot building, containing three and half floors, world class specimens and exhibits. BVMNH presents the best available display and the largest known display of fossils from the Miocene period (14-15 million years ago). Kern County is home to more than 100 square miles of Miocene fossil beds. The fossils that reside at BVMNH were removed from an area near Sharktooth Hill, northeast of Bakersfield. These are unique and rare fossils; some are one of a kind and not found in the same completeness anywhere else

in the world. In addition, BVMNH is home to an impressive display of petrified woods, gem and minerals, a significant African and Asian exotic wild animal exhibits and Native American artifacts.

The Buena Vista Museum is a 501 (c) (3) Non-profit organization. The Museum is a volunteer organization. We are supported by grants, the generosity of our members, visitors, and through individual donations and membership fees.

Koral Hancharick
BVMNH Executive Director

Editor's Note:
Rapid expansion increased the operating cost of the museum. Please consider making a donation as the museum addresses a long-term funding strategy.



www.sharktoothhill.com

earthVision®
by DYNAMIC GRAPHICS, INC.

At the core of your workflow

Take a Look at the Power of Integrated 3D Vision

POWERFUL ♦ VERSATILE ♦ FAST ♦ AFFORDABLE

Integrated Vision

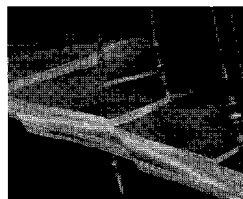
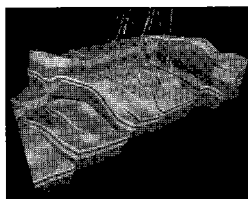
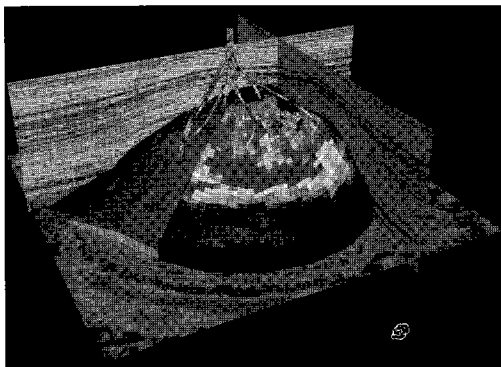
- ♦ efficient, simple data integration
- ♦ seamless software integration
 - ✓ geoscience, petrophysics, engineering
- ♦ promote the power of your 2D tools
 - ✓ quickly resolve complex structures
 - ✓ increase confidence of interpretations
 - ✓ reduce drilling risk
- ♦ visualize and quantify 3D reservoir properties
 - ✓ delineate "sweet" spots and bypassed pay
 - ✓ add confidence to economics and reserves

Shared Vision

- ♦ multidisciplinary co-visualization
- ♦ demonstrate and clarify recommendations
- ♦ expand team knowledge and confidence
- ♦ enhance collaborative decision processes
- ♦ accelerate action & improve success rate

Dynamic Vision

- ♦ horizontal well planning—on-site geosteering
- ♦ rapid model updates and iteration
- ♦ dynamic simulation integration

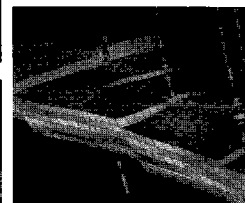


Flexible

Linux®
Windows®
UNIX®

Affordable On Your Terms

Purchase
Lease
Flex Rent



DYNAMIC GRAPHICS, INC.®
Dynamic Graphics is a registered trademark of Dynamic Graphics, Inc. (Marco Registered).
EarthVision is a registered trademark of Dynamic Graphics, Inc. (Marco Registered). The
EarthVision name and logo are registered trademarks of Dynamic Graphics, Inc.
(Marco Registered). WorkFlow Manager is a registered trademark of Dynamic Graphics, Inc.
All other trademarks belong to their respective holders.



DYNAMIC GRAPHICS, INC.®

1015 Atlantic Avenue
Alameda, CA 94501

www.dgi.com

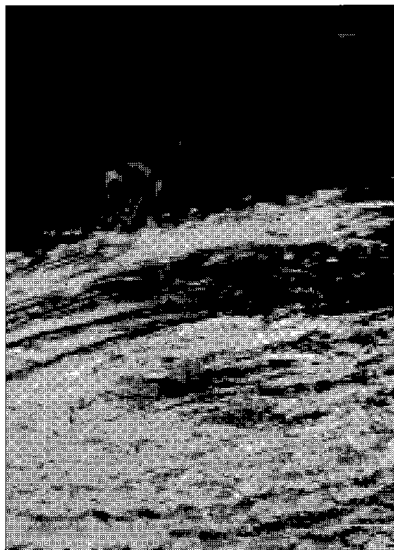
510-522-0700

contact

Roy Burlingame

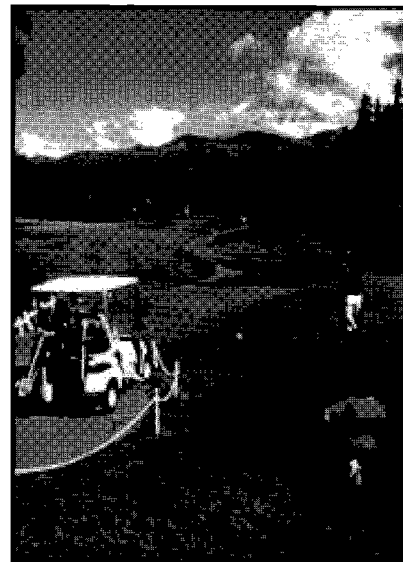
661-204-3016

roy@dgi.com



Been pulled by a 20 pound trout?

(look for Adventure & Eco Tours or go to www.floatexperience.com)

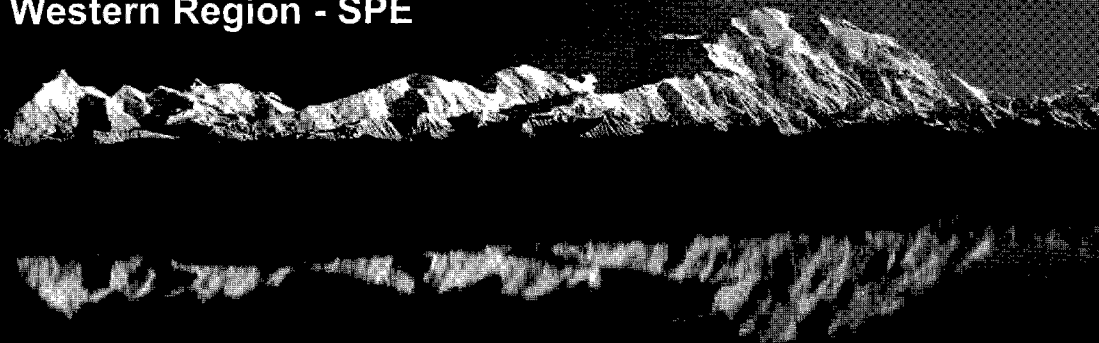


Golfing under the Midnight Sun?

(Rental clubs are available!)

Joint Meeting 2006

Pacific Section - AAPG
Cordilleran Section - GSA
Western Region - SPE



ANCHORAGE, ALASKA
Technical Program May 8-10
Plus Field Trips & Short Courses

Come make your memories.
Information and Registration at:

www.anchorage2006.com

Pacific Section – AAPG, Cordilleran Section – GSA, Western Region – SPE

North to Alaska Geoscience, Technology, & Natural Resources

Anchorage, Alaska

Technical Program May 8-10, 2006

Plus Pre- and Post-Meeting Field Trips, Courses, & Workshops

TECHNICAL PROGRAM

AAPG / GSA abstract submission deadline Feb. 7, 2006

Joint Symposium:

*Pacific Section AAPG &
Cordilleran Section GSA*

"The Brooks Range Orogen:

A Symposium in Honor of Gil Mull"

Theme Sessions:

Pacific Section - AAPG

- Petroleum Geology of Northern Alaska
- Brookian Reservoirs of the North Slope
- Rural Energy in Alaska
- Reservoir Characterization: Recent Advances in Appraisal and Development

Joint: Pacific Section - AAPG and Cordilleran Section - GSA

- Foreland Basin Systems - Archives of Coupled Structural and Sedimentary Processes
- Forearc Basins: Tectonostratigraphy and Resource Potential.
- Geology of the Circum-Arctic.
- Active Tectonics of the northern Cordillera
- Late Paleozoic - Early Mesozoic Paleogeography of Northern Alaska.
- Active Tectonics of the Northern Cordillera

Cordilleran Section - GSA

- New Insights into the Origin and Evolution of the Northern Cordilleran Pericratonic Terranes
- Wrangellia – Tectonics and Metallogeny, 30 years of progress
- Accreted Terranes of Western North America - An Update on Current Research on the Construction of the Cordillera
- Environmental Issues Associated with Mineralized Regions

High Latitude/Altitude Hydrogeology and Weathering.

- Tectonic Setting of Mineral Occurrences in the Northern American Cordillera.
- Geoscience Education and Public Outreach in Alaska-- Unique problems, Unique Solutions.
- Volcano Hazards and Monitoring.

GSA Undergraduate Research Posters.

Joint: Pacific Section - AAPG and Western Region - SPE

- Arctic Gas Resources
- Viscous Oil: Reservoir Characterization and New Technologies
- New Development & Field Case Histories

Western Region – SPE

- Well Integrity Management
- Drilling Technology
- Completion Innovations
- Reservoir Characterization and Formation Evaluation
- Surface Facility Applications
- Improved Oil Recovery and Reservoir Management
- Production Optimization and Artificial Lift
- Novel Applications
- Independents

FIELD TRIPS

- Chugach Accretionary Prism and Resurrection Bay Ophiolite (includes Resurrection Bay boat cruise; Saturday, May 6 – Sunday, May 8)
- Late Mesozoic and Cenozoic Forearc Basins of the Matanuska Valley (Thursday, May 11)
- Prince William Sound Tidewater Glacier Tour (boat trip – Phillips Cruises; Friday, May 12)
- Denali National Park: Mesozoic marine and Cenozoic nonmarine basins, Tertiary volcanics, and the modern Denali Fault (Friday, May 12 – Saturday, May 13)
- Kuparuk River Oil Field Tour, North Slope, Alaska; by drawing for early (Feb. 1st) registrants
- Anchorage 1964 Earthquake tour (TBA)

WORKSHOPS

- Roy J. Shlemon Mentor Program in Applied Geoscience
- John Mann Mentors in Applied Hydrogeology Program

SHORT COURSES

- Alaska's Volcanoes, Earthquakes, and Subduction Zones – Real Time Earthly data for Classroom Use
- Application of Ichnology to Petroleum Exploration (James MacEachern)
- Log Interpretation Principles (Schlumberger)
- LWD Interpretation and Well Placement (Schlumberger)

SPECIAL EVENTS

- Keynote Address: Henry Posamentier of Anadarko Petroleum Corporation, "3D Seismic Expression of Deep Water Depositional Elements: Reducing Risk of Lithology Prediction" (May 8th, 2006)
- Icebreaker Reception
- Welcoming Reception & Opening Remarks
- PS-AAPG / WR – SPE Awards Lunch
- AAPG Division of Professional Affairs Lunch (Speaker: Dr. Scott Tinker, Texas Bureau of Economic Geology)

REGISTRATION & INFORMATION

Standard Registration Deadline: April 1, 2006

Registration, Abstract Submission, Arrange Travel & Lodging at:

<http://anchorage2006.com>

GENERAL CO-CHAIRS

PS-AAPG: Gregory C. Wilson; Gregory.c.wilson@conocophillips.com

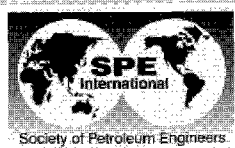
CS-GSA: Jeanine Schmidt; jschmidt@usgs.gov

WR-SPE: William Van Dyke; William_vandyke@dnr.state.ak.us

CALL FOR PAPERS

2006 Joint Meeting
Pacific Section - AAPG
Cordilleran Section - GSA
Western Region - SPE

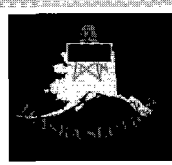
North to Alaska: Geoscience, Technology and Natural Resources



Technical Sessions
May 8-10, 2006
Anchorage, Alaska

Deadline for Submitting Abstracts
February 7, 2006

Hosted by



Message from the Technical Program Chairpersons

It is with great pleasure that we announce the joint meeting of the Pacific Section - AAPG, the Western Region - SPE and the Cordilleran Section - GSA. This joint meeting is scheduled for May 7-10, 2006 in Anchorage.

The theme of the meeting "North to Alaska: Geoscience, Technology, and Natural Resources" highlights the challenges, high stakes, and excitement offered through technology to deliver our energy and natural resources in the future. The broad format of this joint conference promotes emphasis on innovation and cross-discipline approaches in energy and natural resources development. With a wide span of technical presentations, forum topics, short courses, field trips and poster sessions, this meeting is sure to offer something for all professionals involved in the petroleum and natural resources industries, as well as the those involved in Cordilleran and Arctic geoscience studies.

From the AAPG and SPE perspective, the conference will include a broad range of oil and gas development topics, but with a focus on challenges and advances in the areas of:

- Petroleum geology of the North Slope
- Emerging opportunities through viscous oil and arctic gas development
- Rural energy in Alaska
- Recent advances in reservoir characterization
- Geology of the Circum-Arctic and Cordillera

This joint conference of geoscientists and petroleum engineers should present a stimulating forum for the exchange of ideas and innovations across disciplines.

You are invited to get involved and help shape this conference by submitting an abstract for an oral or poster presentation in the technical program. We look forward to hearing from you!

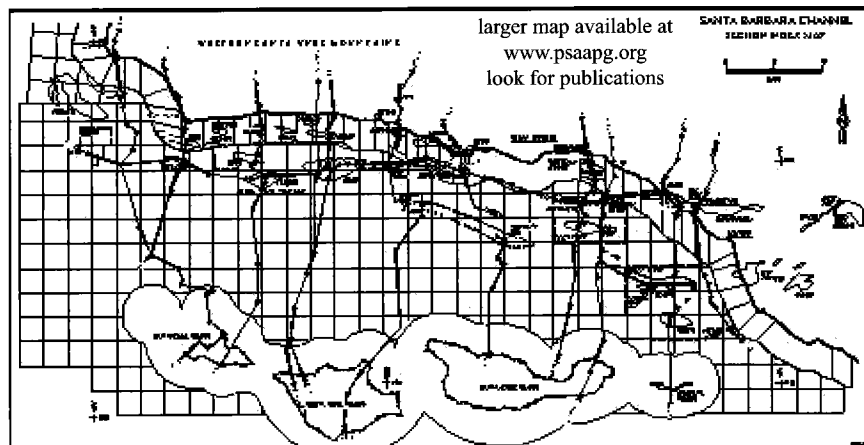
For more information visit: <http://anchorage2006.com> or
Contact one of the technical program chairs:

Sandy Phillips, PS-AAPG, 907.564-4587, phillis2@bp.com
Gordon Pospisil, SPE-A, 907.564-5769, pospisg@bp.com
Alison Till, CS-GSA, 907.786-7444, atill@usgs.gov

Sincerely,

Sandy Phillips	Gordon Pospisil	Alison Till
BP Expl.	BP Expl.	U.S.
(Alaska) Inc.	(Alaska) Inc.	Geologic Survey

New Pacific Section AAPG Correlation Sections Released!



10 North - South Cross Sections Include:

Structure Sections at a natural scale of 1" = 4000'

Correlation Sections at a vertical scale of 1" = 1000' (Sea Level Datum)

2 East - West Cross Sections Include:

Correlation Sections at a vertical scale of 1" = 1000' (Stratigraphic Datum)

SANTA BARBARA CHANNEL Cross Sections

\$12 EACH

\$120 SET

plus

copy of MP-46

*Structure and Petroleum
Geology, Santa Barbara
Channel, California*

Order your set from
PSAAPG Publications

Larry Knauer

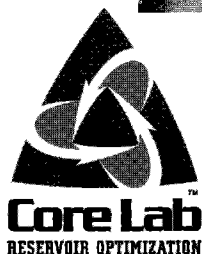
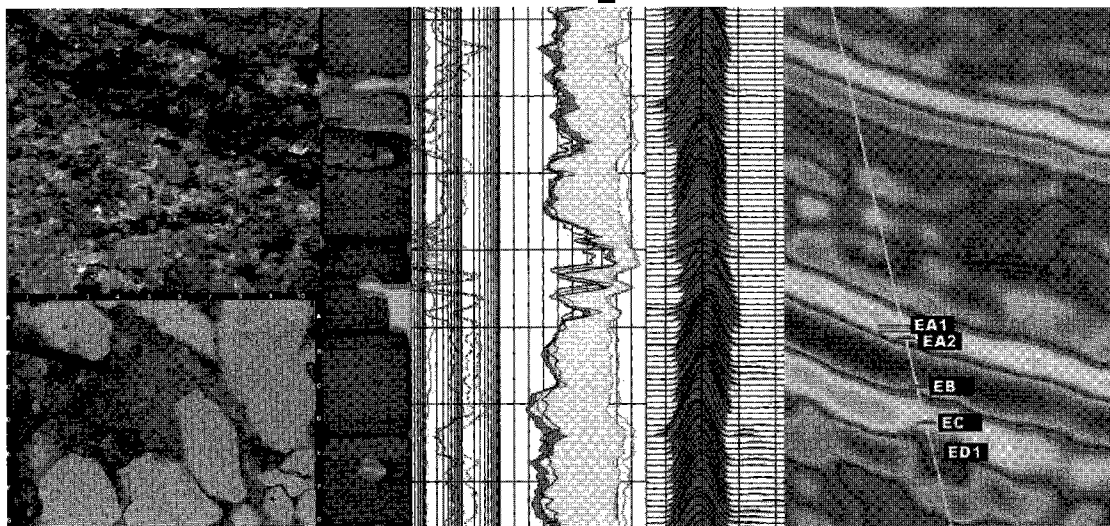
PO Box 1072

Bakersfield CA 93302

661-392-2471

larryknauer@chevron.com

Reservoir Optimization



Core Laboratories, Inc.

3430 Unicorn Road

Bakersfield, CA 93308

(661) 392-8600

(661) 392-0824

E-mail: corebak@ix.netcom.com

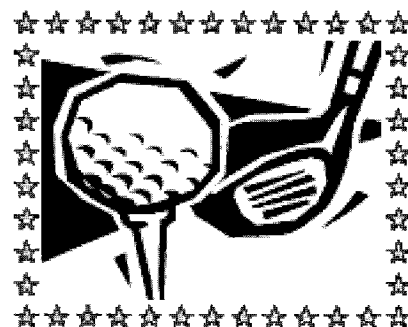
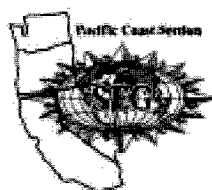
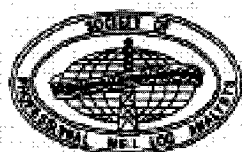
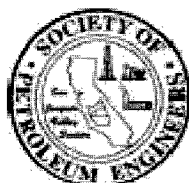
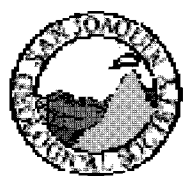
Core Laboratories, Inc.

600 W. 58th Ave., Unit D

Anchorage, AK 99518

(907) 349-3541

www.corelab.com



SPE / SJGS / SPWLA / SEG

Second Annual Golf Extravaganza

PRIZES

First Prize
Second Prize
Third Prize
Long Drive
Closest to the Pin
Longest Putt

Date: Friday April 7, 2006
Place : Sundale Country Club
Time: 12:00 Noon Shotgun Start
Format: 4 Man Scramble
Cost: \$75 per player
Amenities: Goody Bag (Shirt, Cap, Balls etc.)
Food and Beverage stations on the course
Awards & Raffle: 5:00 – 6:00 w/ Hors'doeuvres
50% chance of winning in the Raffle

50 items to raffle including golf equipment, tools, turkey fryers, fishing tackle Strictly 1 entry ticket per player included in cost

Contact Information

Mark LaCroix 661-616-3823
Roy Burlingame 661-587-2654
Duane Johnston 661-763-6315
Dan Fargo 661-331-6542

**Proceeds will benefit
each organization**

Make Check Payable to: SPE

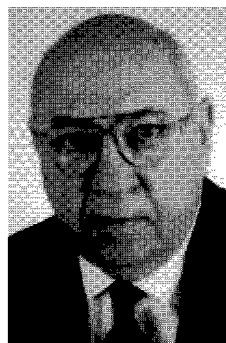
Mail Check and Entry Form to:
Jim Hankinson
Chevron
26251 Highway 33, Room A33
Fellows, Ca. 93224
jhankinson@chevronesaco.com (661) 768-3724

Tournament limited to first 36 Teams entered

Name	Address	Company	Phone	Team	Affiliation(s)	Shirt Size
Player 1					SPE SJGS SPWLA SEG	S M L XL XXL
Player 2					SPE SJGS SPWLA SEG	S M L XL XXL
Player 3					SPE SJGS SPWLA SEG	S M L XL XXL
Player 4					SPE SJGS SPWLA SEG	S M L XL XXL

Member News

Pacific Section AAPG - Farewell to Friends



Robert M. Sneider
March 2, 1929 - October 29, 2005

Robert Sneider was born in Long Branch, NJ on March 2, 1929 to William J. Sneider and Rose Marmorstein. He lived with his parents and sisters in the beach community of Asbury Park, NJ. He was active in sports during his youth and was a beach lifeguard. He received his B.S. degree from Rutgers University. After Rutgers, Bob served as an army combat engineer during the Korean War. He was honorably discharged from the army as a 1st lieutenant and entered graduate school at the University of Wisconsin at Madison. He received a Ph.D. in geology and mining engineering. During this period he met an elementary school teacher, Ramona Meyer. Ramona and Bob were married on Sep 1, 1956. His 48-year career began in 1957 at Shell Oil Company where he worked for nearly 18 years. During the Shell years, the family moved often settling in Houston in 1967. In 1974, Bob started Sneider and Meckel Associates, Inc. with Larry Meckel. He formed Robert M. Sneider Exploration, Inc. in 1981. Bob was involved in worldwide exploration, production, property acquisition, research, training and management. During Bob's career, he and his associates strove to add value to companies by finding new opportunities through the application of integrated geological-geophysical-petrophysical and petroleum engineering techniques working in both frontier and mature areas. He led the industry in cataloging geological, petrophysical, and engineering properties of reservoir, seals, and flow barrier rock types from around the world.

Bob actively participated in many professional societies receiving numerous professional accolades and was a mentor to countless professionals during his career. He was a distinguished lecturer for the AAPG, PESA and SPE. In 2000, he became a member of the National Academy of Engineering. He was an honorary member of the AAPG and named the 2001 recipient of the Sidney Powers Medal, AAPG's highest award. Bob and Ramona were full partners in life. Bob often acknowledged that his success was due to the steadfast support and assistance of his wife. They raised a family of three children. They were enthusiastic grandparents. After their children were grown, Bob and Ramona enjoyed time together, much of it traveling the world and seeing friends.

On Oct 29, 2005, Bob passed away in his Houston home, as was his wish. He lived his life with the highest standards of integrity. He has left a long legacy to his field of science. Memorial Grant or Gustavus E. Archie Memorial International Grant - AAPG Foundation, P.O. Box 979, Tulsa, OK 74101-0979 USA. Museum Fund - Anne Lucke, Director of Development, College of Letters and Science, University of Wisconsin Foundation, 1848 University Avenue, Madison, WI 53726.

J.M. "BUZZ" DELANO, JR.
Consultant

Cell (661) 747-0337
Office (661) 832-5229
Fax (661) 832-5229
Email: BuzzBake@aol.com

Delano Petrophysical Consulting Services

816 Ferdinand Ct.
Bakersfield, California 93309

Dipmeter Analysis
Tape Conversion Editing
Expert Petrophysical Analysis
Wellsite Supervision

GREGORY GEOLOGICAL SERVICES

Glenn J. Gregory
Calif. Reg. Geol. #3676

(661) 663-8542 Phone/Fax
8804 O'Meara Court
Bakersfield, CA 93311

(661) 633-5555
4800 Easton Drive, Suite 101
Bakersfield, CA 93309

glenng@bak.rr.com



Lanny Eugene Jones
November 14, 1940 - December 16, 2005

Lanny Jones was born in Tulsa, Oklahoma to parents Maxine and Ralph, and passed away peacefully with his family and close friends by his side. Lanny was a graduate of Grove Oklahoma High School, and also attended the University of Oklahoma. Lanny was a figurehead in both the petroleum industry as well as the Bakersfield community. He began his career going to work for Welex/Halliburton in Pawhuska, Oklahoma in 1961 as an Equipment Operator. Lanny worked his way up through the ranks serving as Drafting Supervisor; Engineer Trainee; Engineer; Senior Engineer/Kuala Lumpur, Malaysia; Engineer in Charge/Quito, Ecuador; Senior Engineer/Offshore, Ventura; District Sales/Bakersfield; District Manager/Ventura; and Senior Division Sales anager/Bakersfield. Lanny recently retired this past June as a Senior Account representative in Bakersfield, having served Halliburton for 44 years. While working for Halliburton, Lanny also developed university recruiting programs for Halliburton engineer trainees in the state of California, hired all engineer trainees, and hired for Halliburton International Operations, as well as for the Rockies region. Lanny was particularly proud of his personal relationship with the current Vice-President of the US, while Mr. Dick Cheney was CEO of Halliburton. Lanny never thought of his clients as a means to an end; he always considered them as his closest and most personal friends.

Lanny was passionate about giving back to those less fortunate, as well as to serving the petroleum industry, and he belonged to several societies both national and local. He held memberships in the Society of Professional Well Log Analysts, American Petroleum Institute, American Association of Drilling Engineers, the Bakersfield Paternal Order of Elks, Footprinters, and was the former director of the Bakersfield Petroleum Club. Lanny was the recipient of numerous awards and recognition for his service to the industry and the community-at-large, including the Desk & Derrick's "Oil Person of the Year" for both 2000 and 2001, MDA's "Commitment to the Community" award as Humanitarian of the Year in 2004, as well as a special award from CIPA upon his retirement in June 2005.

Lanny loved his family, his dog Precious, dominoes, cooking, eating at the Red Pepper, boating, fishing, golfing, and people. He was a man of integrity, extremely generous, and a man of his word. He was also passionate about fundraising for CIPAC, Pyles Boys Camp and other organizations that contributed to disabled or impoverished children. Lanny will always be remembered as a kind, considerate, and compassionate man.

James MacLean
Passed on November 29, 2005

James MacLean passed away November 29, 2005 in Sacramento, CA at the age of 41. James was a native of Concord, CA and a current resident of Sacramento. He is survived by his spouse Heidi Messer of three years, his parents Thomas and Ismini MacLean, and his brother Harold P. MacLean. James worked as a geologist having earned his bachelor's degree from Sacramento State and his master's degree from Oregon State University.

Data Determines Direction.

How good is yours?

Any laboratory can generate data from core samples. But when that data is being used to determine your company's next move, it had better be accurate.

At OMNI Laboratories, we have refined the science of gathering information from core and we have sharpened the art of evaluating it. Our facilities are on the cutting edge. Our proprietary technologies provide comprehensive profiles of rocks and reservoirs. And our staff of scientists is simply unsurpassed.

The result? You get precise data plus trustworthy interpretations. So that the decision you make...the direction you take...is exactly where you need to go.

At OMNI, We've Got The Answers.

OMNI
Laboratories, Inc.

Ten locations in the U.S. and South America • Headquarters: Houston, TX • 832-237-4000 • www.omnilabs.com

Member News

Pacific Section AAPG - Become a Member

Join the Pacific Section AAPG

Communication, networking and information exchange are crucial to professional and scientific advancement. The following outlines how the Pacific Section AAPG addresses these important issues facilitating your career as a geoscientist.

With a membership to PSAAPG, you also become a member of your local affiliated society if you are in the Los Angeles Basin Geological Society, the San Joaquin Geological Society, or the Coast Geological Society (Ventura-Santa Barbara area) - two memberships for the price of one. The other local societies (Northern California Geological Society, Sacramento Petroleum Association, Northwest Energy Association or the Alaska Geological Society) have a separate set of dues. These seven local societies are the backbone of Pacific Section and each focuses on their local geoscience community with regular meetings, presentations, field trips and community service activities.

The Pacific Section supports research on a wide range of topics that have application to those in our industry. If you've been a geoscientist on the West Coast for any amount of time, you likely have a Pacific Section volume, map, cross section, or field guide in your library. Many are classic volumes, critical for people working in the major petroliferous basins of western North America. Support this work with your membership and get a discount on price.

Our newsletter and website are linchpins for the organization; the newsletter is published every two months for members throughout the western Cordillera. This attractive publication informs the membership on upcoming local, regional, and national events, and commonly contains historical information, brief technical items and letters of merit. The webpage is expanding and adding technical and historical information constantly.

The most important event of the year for most members is the Pacific Section Annual Meeting. Held in a different city each year, the annual meeting allows members to network and share their latest findings in technical symposia, poster session, and field trips. These exciting meetings are usually held in conjunction with either GSA or SPE, allowing information exchange with these important organizations. Organizing these meetings is a tremendous responsibility and your membership help makes it happen. In 2007 PSAAPG is hosting the AAPG Annual Meeting in Long Beach. A committee of dedicated PSAAPG members is well underway toward planning this event for your edification and enjoyment.

Finally, the Pacific Section is your advocate to the national AAPG. In this increasingly Houston-centric business, this is an important consideration. We make sure that the needs of geoscientists on the west coast are not lost on our Gulf Coast based national organization.

So there it is, many reasons to support the Pacific Section by becoming a member. Help yourself and support your peers by becoming a member of PSAAPG today.

DAVID B. DEL MAR

Consulting Petroleum Geologist
California Registered Geologist #634

Development – Thermal EOR – Property Reviews

2027 Park Drive
Los Angeles, CA 90026

H (323) 664-3358
dbdelmar@earthlink.net

Advertising Rates

Members	Single issue	Year (6 issues)
Full Page	\$400.00	\$1600.00
Half Page	\$250.00	\$1050.00
Quarter Page	\$150.00	\$650.00
Business Card		\$250.00

Societies Free Advertising

Conventions Societies	Unlimited Space 1/4 page	PS-AAPG Newsletter AAPG Explorer
-----------------------	-----------------------------	-------------------------------------

Mid-Term Meeting comes to Long Beach, CA November 19, 2005



Patrick Gooding, Marty Hewitt, David Hawk, Sigrunn Johnsen, Pat Gratton, Don Clarke, Bob Shoup, Larry Jones, Jim Boles and Lee Billingsley.

**CALIFORNIA OIL MUSEUM**
ESTABLISHED 1950

"From fossils to 'fill'er up,' the California Oil Museum tells the story of the black bonanza that created wealth, work, and prosperity for generations of Californians"

DESTINATION MARS

NATIONAL TRAVELING EXHIBITION

THROUGH FEBRUARY 19, 2005
www.destinationmars.org

Support the museum with a business or personal membership

HOURS:
Wed. — Sun.
10 am to 4 pm

www.oilmuseum.net
info@oilmuseum.net
1001 E. MAIN STREET
POST OFFICE BOX 48
SANTA PAULA, CA 93060
(805)933-0076



PacSeis, Inc.

The leader in Sub-Surface Information



Resources that Deliver the Difference

- One of the largest seismic databases available for license
- Seismic available for immediate license
- Over 500,000 line miles of 2D data located in domestic United States (onshore & offshore)
- South America, offshore Peru, and offshore Siberia

Exclusive Opportunity 2005

Recently acquired seismic databases by Pacific Seismic Co.

- Chevron USA California, OXY USA Nationwide (including Arco & Enron)
- Santa Fe Energy, TXO, Cities Service Oil & Gas Nationwide
- Southern Pacific, PG&E/ NGC, SOHIO

Pacific Seismic Company

Your full-service Seismic Brokerage & Acquisition Company

Exploration Consulting

Prospect Financing

Project Development

Production

Marketing

Bakersfield

Denver

Tulsa

Houston

TEL: 661.322.1171

FAX: 661.322.1181

curtisconway@arrival.net

News from our Member Societies

Alaska Geological Society
www.alaskageology.org

P. O. Box 101288
Anchorage, AK 99510

Contact: Kristine Crossen
afkjc@uaa.alaska.edu



Luncheon meetings are held monthly September through May, usually on the third Thursday of the month, at the Anchorage Hilton (500 W. 3rd Avenue) from 11:30 a.m. to 1:00 p.m. The cost is \$17 (members with reservations) or \$20 (members without reservations and nonmembers). For reservations, call the AGS reservation voice mail at 907-646-7106 or contact **Edna Beuhler** at edna.beuhler@encana.com by noon on Monday before the meeting.

2005 - 2006 Officers

President:	Kris Crossen	907.786.6838	afkjc@uaa.alaska.edu
President Elect:	Robert Blodgett	907.786.7416	rblodgett@uaa.alaska.edu
Vice President:	Clif Posey	907.317.2361	clif@posey.org
Treasurer:	Laura Silliphant	907.644.3208	laura_silliphant@yahoo.com
Secretary:	Tom Morahan	907.263.4094	Tom.Morahan@conocophillips.com

AGS January & February Luncheons: TBA

Convention Field Trips: May 6, Kuparuk Oil Field
May 6-7, Chugach Mountains and Resurrection Bay Ophiolite Cruise
May 9, (evening walking tour) Anchorage 1964 quake
May 11, Matanuska Valley
May 12, Prince William Sound glacier Cruise
May 12-13, Denali Area

Coast Geological Society
www.coastgeologicalsociety.org

P. O. Box 3055
Ventura, CA 93006

Contact: Shaun Simon
805.495.2197



Dinner meetings are held monthly September through June, usually on the third Tuesday of the month, at the Veterans of Foreign Wars Hall at 3801 Market Street in Ventura. Social hour starts at 6:00 p.m., dinner is served at 7:00 p.m., and the talk starts at 8:00 p.m. The cost of dinner is \$15 (with reservations), \$18 (without reservations), or \$8 (students and K-12 teachers); the talk is free. For reservations, contact **Dave Brown** at 805.653.7975 or make reservations online at www.coastgeologicalsociety.org. Reservations should be made by 4:00 p.m. on Friday before the meeting.

2005 - 2006 Officers

President:	Shaun Simon	805.495.2197	president@coastgeologicalsociety.org
Vice President:	Greg Millikan	805.766.2040	vpresident@coastgeologicalsociety.org
Treasurer:	John Minch	805.682.4711 x137	treasurer@coastgeologicalsociety.org
Secretary:	John Harris	805.407.7664	harris@numericssolutions.com

CGS January 16th - Allen King, "The 584 Degree Fahrenheit Landslide"

News from our Member Societies

Los Angeles Basin Geological Society
www.labgs.org

515 So. Flower Street, Ste 4800
Los Angeles, CA 90071

Contact: Jon Kuespert
213.225.5900 x224



Luncheon meetings are held monthly September through November and January through June, usually on the third or fourth Thursday of the month, in the Monarch Room at The Grande at Willow Street Conference Centre (4101 E. Willow Street) in Long Beach. Lunch is served at 11:30 a.m., and the talk starts at 12:15 p.m. The cost is \$20 (with reservations), \$25 (without reservations), or \$5 (students). Reservations can be made online at www.labgs.org or by contacting **Ivan Aburto** at iaburto@breitburn.com or 213-225-5900 ext. 234. Reservations should be made by Tuesday before the meeting.

2005 - 2006 Officers

President:	Jon Kuespert	BreitBurn Energy, LP
Vice President / Program Chair:	Dick Brown	Consultant US Geologic Services
Treasurer:	Steve Zigan	Environmental Resolutions, Inc
Secretary:	Ivan Aburto	BreitBurn Energy, LP

LABGS January 26 - Bob Davis

LABGS February 23 - Mike Hart

Northern California Geological Society
www.ncgeolsoc.org

9 Bramblewood Court
Danville, CA 94506-1130

Contact: David Bero
dbsquare@earthlink.net



Evening meetings are held monthly September through May, usually on the last Wednesday of the month, at the Masonic Center (9 Altarinda Road) in Orinda. Social hour starts at 6:30 p.m., and the talk starts at 7:00 p.m. (no dinner). The cost is \$5. For reservations, contact **Dan Day** at 925-294-7530 (leave your name on the voice recorder any time before the meeting).

2005 - 2006 Officers

President:	David Bero	Scholarship:	Phil Garbutt
President-Elect:	Bill Perkins	K-12 Programs:	John Stockwell
Treasurer:	Phil Reed	Membership:	Barb Matz
Program Chair:	Randy Kirby	Newsletter & Website Editor:	Mark Detterman

NCGS January 25 - Sarah Andrews, Author, Em Hansen Forensic Geologic Novels: "The Mind of the Geologist".

NCGS February 22 - Dr. Richard Buffler, University of Texas, Austin, "Geologic Setting of the Abdur Archaeological Site on the Red Sea Coast of Eritrea, Africa".

Northwest Energy Association
dlgellar@msn.com

P. O. Box 6679
Portland, OR 97228-6679

Contact: James Jackson
503-771-3887



Luncheon meetings are held monthly October through May, usually on the second Friday of the month, at the Multnomah Athletic Club (1849 SW. Salmon Street) in Portland. The meeting starts at 1:00 p.m. The cost is \$15. For information or reservations, contact **Shelley Thomas** at 503-848-2947 or **Treck Cardwell** at 503-226-4211 ext. 4681.

President:	Debra Gellar
Vice President:	Jamie Schick
Secretary:	Shelley Thomas
Treasurer:	Teresa Hagins

News from our Member Societies

Sacramento Petroleum Association

P. O. Box 571
Sacramento, CA 95812-0571

Contact: Rick Blake
925-422-9910



Luncheon meetings are held monthly January through November, on the third Wednesday of the month at the Hungry Hunter Restaurant (450 Bercut Drive) in Sacramento. The meetings starts at noon. The cost is \$16. For information or reservations, contact **Pam Ceccarelli** at 916-322-1110 or pceccare@consrv.ca.gov.

2005 - 2006 Officers

President:	Rick Blake	blake2@llnl.gov
Vice President:	Marc Brennen	
Secretary/Treasurer	Pam Ceccarelli	Pam.Ceccarelli@conservation.ca.gov

San Joaquin Geological Society

www.sjgs.com

P. O. Box 1056
Bakersfield, CA 93302

Contact: Rob Negrini
negrini@csu.edu



Dinner meetings are held monthly October through June, usually on the second Tuesday of the month, at the American Legion Hall (2020 H Street) in Bakersfield. The icebreaker starts at 6:00 p.m., dinner is served at 7:00 p.m., and the talk starts at 8:00 p.m. The cost of dinner is \$15 (with reservations) or \$18 (without reservations); the talk is free. For reservations, contact **Jonathan Lange** at 661-664-7644 or jlange@chevron.com.

2005 - 2006 Officers

President:	Rob Negrini	rnegrini@csu.edu
President- Elect:	Bill Scanlan	wscanlan@bak.rr.com
Vice President:	Michelle Glascock	mglascock@aeraenergy.com
Secretary:	Jonathan Lange	JLange@chevron.com
Treasurer:	Alexandra Urrego	alexandra_urrego@oxy.com
Past-President	Roy Burlingame	rburlingame@bak.rr.com

SJGS January 10th - Bob Liske, Aera Energy, "DOE Project: Treatment of Oil-Field Produced Water for Beneficial Re-Use".

SJGS February 14th - Tom Redin, Pacific Correlation Committee, "Santa Barbara Channel Correlations".

Announcements

AGI's 2006-2007 Congressional Geoscience Fellowship*

The American Geological Institute is accepting applications for next year's William L. Fisher Congressional Geoscience Fellowship. The successful candidate will spend 12 months (starting in September 2006) in Washington working as a staff member in the office of a member of Congress or a congressional committee. The fellowship represents a unique opportunity to gain first-hand experience with the federal legislative process and make practical contributions to the effective and timely use of geoscientific knowledge on issues relating to the environment, resources, natural hazards, and federal science policy. The postmark deadline for 2006-2007 fellowship applications is February 1, 2006.

Prospective applicants should have a broad geoscience background and excellent written and oral communications skills. Minimum requirements are a master's degree with at least three years of post-degree work experience or a Ph.D. at the time of appointment. Although prior experience in public policy is not necessary, a demonstrable interest in applying science to the solution of public problems is desirable. Due to the nature of the position, preference will be given to applicants who are US citizens or permanent residents. Applicants must be a member of one of AGI's 44 member societies, a list of which is available at www.agiweb.org/members/index.html.

The fellowship carries an annual stipend of up to \$49,000 plus allowances for health insurance, relocation, and travel. Interested candidates should submit a cover letter and a curriculum vitae with three letters of reference. All application materials must be postmarked by February 1, 2006 and sent to: William L. Fisher Congressional Geoscience Fellowship American Geological Institute 4220 King Street Alexandria VA 22302-1502. For more information about the fellowship, visit the Government Affairs website at www.agiweb.org/gap or send inquiries to govt@agiweb.org.

**PACIFIC SECTION
AMERICAN ASSOCIATION OF PETROLEUM GEOLOGISTS**

2005 - 2006 Officers

President	Joan Barminski 805.389.7509 joan.barminski@mms.gov
President-Elect	Mike Wracher 805.745.2272 mwracher@venocoil.com
Vice President	Mike Clark 661.378.8134 mikesclark@bak.rr.com
Secretary	Janet McAlee 661.395.5438 jmcalee@plainsxp.com
Treasurer	Melissa Kolb 661.763.6481 mmkolb@bak.rr.com
Past President	Steve Sanford 661.654.7313 steve.sanford@chevron.com

Newsletter Staff

Editor	Karen Blake 661.395.5214 kblake@plainsxp.com
Advertising Coordinator	Barbara Rycerski 661.665.5310 barycerski@aeraenergy.com

Geological Coordinator	Frank Cressy 661.323.6828 fcressy@prodigy.net
-------------------------------	---

Website Coordinator	Hana Baker hanabaker@chevron.com
----------------------------	-------------------------------------

Membership/Subscriptions

Membership Chair	Mark Yarlot 661.616.3851 mey@bry.com
-------------------------	--

Publications

Publications Chair	Larry Knauer 661.392.2471 larryknauer@chevron.com
---------------------------	---

Pacific Petroleum Geologist Newsletter is published bimonthly by the Pacific Section of the American Association of Petroleum Geologists, P. O. Box 1072, Bakersfield, CA 93302; www.psaapg.org (website); psaapg@psaapg.org (e-mail).

Membership dues (including subscription) are \$12 per year. Membership inquiries and change of address should be directed to the Membership Chair.

Articles, news about members and events, and other items of interest to our members are encouraged and should be sent to the Editor. Geological articles should be sent to the Geological Coordinator.

Memorial notices, articles, and photographs should be sent to the Editor. Materials may be condensed to accommodate newsletter space constraints and will be returned upon request.

Members with opinions or suggestions regarding our conventions, publications, newsletter, or other items of interest to our members are encouraged to share their views and ideas by sending letters to the Editor. All letters will be shared with the Executive Committee, and those with relevant and timely content will be published in the newsletter; letters may be condensed to accommodate newsletter space constraints.

Advertising inquiries should be directed to the Advertising Coordinator.

The submission deadline for the March & April 2006 issue is February 15, 2006.

The newsletter is accessible at www.psaapg.org.

User: psaapg
Password: loidier

Contributors to This Issue

Joan Barminski
Don Clarke
Mark Legg
Koral Hancharick



Pacific Section AAPG
P. O. Box 1072
Bakersfield, CA 93302

PRESORTED
STANDARD
U.S. POSTAGE PAID
BAKERSFIELD, CA
PERMIT NO. 1163



4*2*****3-DIGIT 933

LARRY KNAUER
2409 NANTES WAY
BAKERSFIELD CA 93311-1556