

# PACIFIC PETROLEUM GEOLOGIST NEWSLETTER

of the Pacific Section

American Association of Petroleum Geologists

January 2000 NO. 1

## A MESSAGE FROM THE PRESIDENT

### Spotlight on Educational Outreach

The Pacific Section AAPG is dedicated to advancing the profession of petroleum geology, both within its own membership and in the community at large. This is accomplished through a variety of educational outreach programs supported by our organization. Support takes the form of direct financial backing, organizational and administrative assistance, and special recognition programs. This effort is aimed at a wide range of people, from grade-school students to university professors. I want to focus on this topic to highlight the commitment many of our members have toward the next generation of geologists, the training of mid-career geologists, and the education of the general public.

One of the most enduring means of geologic educational support is through the Martin Van Couvering Fund. Top geology students from selected colleges and universities receive financial assistance in the form of the Martin Van Couvering Award, which includes paid PSAAPG convention registration. The opportunity to gain exposure to the professional geology community and to participate in technical sessions benefits these students in a very direct way. This recognition also serves to attract some of the brightest young students to the petroleum industry.

In contrast to the long-standing tradition of the Martin Van Couvering Award, the Teacher of the Year Award is a relatively new program. It is designed to recognize kindergarten through grade 12 teachers who have demonstrated excellence in the teaching of earth sciences. The award typically includes a \$500 stipend plus \$250 in expenses to attend the PSAAPG annual convention, a field trip, and registration for the "Rocks-in-Your-Head" class, an educational program supported by the National AAPG and PSAAPG. Very recently, the PSAAPG has supported expansion of the Teacher of the Year Award

program. To encourage local affiliated societies to establish their own K-12 teacher scholarships, the PSAAPG is providing "seed money" to these societies to use in the initial years of a teacher scholarship program.

Another brand new program is the Texaco/AAPG Scholarship Program. This program is aimed at upper division and graduate geoscience students enrolled in a college or university within the Pacific Section region. The program represents a partnership between Texaco and PSAAPG, with Texaco providing four \$1000 scholarships and the PSAAPG responsible for administering the program and selecting scholarship recipients. This is the first year of the program, and so far we have received excellent response from students throughout the western United States.

The list of educational and recognition programs can go on to include the PSAAPG supported California State University, Bakersfield Geotechnology Training Center and the long established PSAAPG Distinguished Educator Award. Support of the programs described in this column comes from direct membership contributions, proceeds from conventions and book

(Continued on page 2)

## Inside this issue...

<b>Presidents Message .....</b>	<b>Page 1</b>
<b>CCGO News .....</b>	<b>Page 2</b>
<b>Senteur de Boue .....</b>	<b>Page 3</b>
<b>Calendar of Meetings .....</b>	<b>Page 4</b>
<b>Candidates for Advisory Council .....</b>	<b>Page 5</b>
<b>CSUB Courses! .....</b>	<b>Page 6</b>
<b>Nat MacKevett Night at the SJGS .....</b>	<b>Page 7</b>
<b>Tephrochronology .....</b>	<b>Page 9</b>
<b>News from the Societies.....</b>	<b>Pages 12-13</b>

(Continued from page 1)

sales, and membership volunteer service. This is one of many ways in which the Pacific Section demonstrates dedication to advancing the profession of petroleum geology.

**Terry W. Thompson**  
**President, Pacific Section AAPG**

## **Bakersfield Geotechnology Training Center**

**Another Geotechnology Training Center is available to our members, and a local community of eager students, in Bakersfield, California. Opening this Fall in the Geology Department of California State University, Bakersfield, the facility will have six SGI Octane workstations and twenty PCs for students to use to study a myriad of state-of-the-art software.**

**For information contact:**

**Janice Gillespie, Director  
Geotechnology Center  
California State University, Bakersfield  
9001 Stockdale Highway  
Bakersfield, California 93311-1099  
661.664.3040  
jan@cs.csubak.edu**

### **Well Data Research**

*A Service Provider  
of*

**Historical Production & Injection Data  
for Wells within California**

***Initial Production to Present***

**(661) 324-5441**



**5400 Rosedale Hwy Bakersfield, CA 93308**



## **CALIFORNIA COUNCIL OF GEOSCIENCE ORGANIZATIONS WELCOMES NEW YEAR**

At its final board of directors meeting of 1999, the California Council of Geoscience Organizations continued its work of representing more than 3200 geoscientists in support of public health, safety, and welfare in California. For 2000 the board elected the following representatives as CCGO officers: President: Betsy Mathieson, Association of Engineering Geologists - San Francisco Section; Vice President: James Jacobs, American Institute of Professional Geologists - California Section; Secretary: John Karachewski, American Association of Petroleum Geologists - Pacific Section; Treasurer: Anne Cavazos, Association for Women Geoscientists - San Francisco Bay Area Chapter. The new officers will be installed at the February 5 board meeting in Pasadena.

At the end of November CCGO Executive Director Harrison Phipps testified in support of continuing the State Board of Registration for Geologists and Geophysicists (BRGG) at a hearing of the Joint Legislative Sunset Review Committee (JLSRC) in Sacramento. Harrison was joined by CCGO President David Ebersold, who spoke on behalf of the Southern California Section of the Association of Engineering Geologists, and other representatives of AEG and the BRGG. The JLSRC generally agreed that many of the improvements it requested of the BRGG 4 years ago have been made, including changing to a nationally recognized exam, adopting a criterion-referenced pass point instead of retaining the arbitrary 70% pass point, and improving the enforcement program. The JLSRC, however, is questioning the need for a geology board instead of a bureau, which would be administered within the Department of Consumer Affairs, and the need for a geology board separate from the Board of Registration for Professional Engineers and Land Surveyors. CCGO is planning a legislative "drive-in" to Sacramento in February or March for face-to-face meetings with key legislators on the JLSRC and those involved in other geoscience issues and will testify at the next hearing in March.

In final preparation for the new year, the CCGO board renewed Harrison Phipps's executive director contract for 2000 and accepted his offer to provide web-site update and maintenance services as part of his contract.

Visit our web site, <http://www.ccgo.org>, for new postings early this year.

J.M. "BUZZ" DELANO, JR.  
Consultant

Cell (805) 828-6318  
Work (805) 325-3987  
Home (805) 832-5229  
Fax (805) 322-2941

## **Delano Petrophysical**

Consulting Services

Email: BuzzBake@aol.com  
5401 Business Park South  
Suite 214  
Bakersfield, California 93309

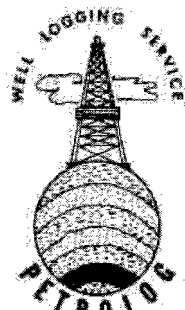
Dipmeter Analysis  
Tape Conversion Editing  
Expert Petrophysical Analysis  
Wellsite Sitting

## **California Well Sample Repository California State University, Bakersfield 9001 Stockdale Highway Bakersfield, CA 93311-1099**

California's only facility for permanent storage  
and public use of cores, sidewall samples, drill  
cuttings and microfaunal slides

Cores and cuttings from 5,000 wells  
Logs and well files for 25,000 wells

**For more information contact:**  
**Russ Robinson (curator)**  
**(661) 664-2324**  
rrobinson@csubak.edu



## **PETROLOG**

PETROLOG, INC.

JOHN T. WILLIAMS  
R.G., C.P.G.

**Geological Well Logging**

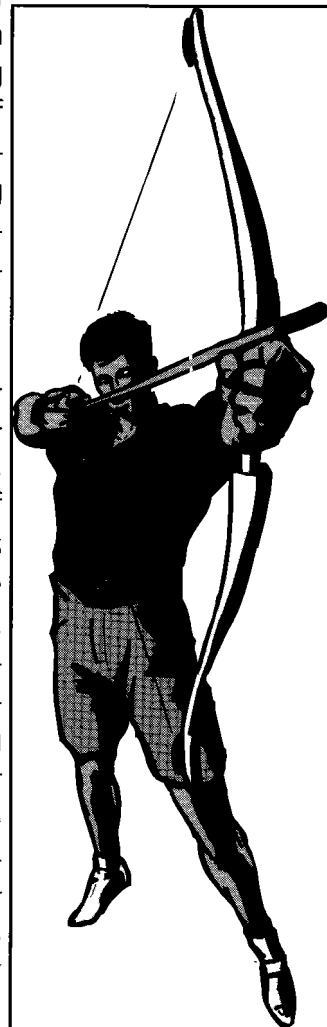
459 DOROTHY AVENUE  
VENTURA, CA 93003

(800) 750-4590 • (805) 642-2847 • FAX (805) 642-6550

## ***Senteur de Boue on Archery (ahem!)***

Senteur de Boue recently recounted to us the role his French ancestors played in the famous Battle of Agincourt, which was waged against the English in 1415. Apparently, the French, mistakenly anticipating victory over the English, announced on the eve of battle that they would cut off the middle finger of all captured English soldiers. This insult would render the English incapable of drawing back the bow strings of their renowned long-bows--thereby preventing them from shooting arrows at the French in future battles.

Because the English long-bow was made of the native English Yew tree, drawing the bow string of this famous weapon was known as "plucking the yew" (i.e., to "pluck yew"). Much to the bewilderment of Senteur's ancestors, the English won a major upset at Agincourt and began mocking the defeated French by waving their middle fingers at them and yelling, "we can still pluck yew! *PLUCK YEW!*"



Senteur also reports that English yeoman used pheasant feathers on the ends of their arrows to make them fly straight. Thus, the symbolic middle-finger gesture of Agincourt became known as "giving the bird".

And yew thought yew knew everything!



# February 2000

Sun	Mon	Tue	Wed	Thu	Fri	Sat
		1	2	3	4	5
6	7	8 SJGS	9	10 LABGS	11	12
13	14	15 Coast	16 SPA	17 AGS	18	19
20	21	22	23 NCGS	24	25	26
27	28	29				



# March 2000

Sun	Mon	Tue	Wed	Thu	Fri	Sat
			1	2	3	4
5	6	7	8	9	10	11
12	13	14 SJGS	15	16 AGS LABGS	17	18
19	20	21 Coast	22	23	24	25
26	27	28	29 NCGS	30	31	

# Candidates for Advisory Council

## Donald W. Lewis

### **Consultant**

### **Education**

Caltech, B.S., Geology, 1956  
Northwestern, M.S., Geology,  
1959

### **Employment**

Chevron Corporation and subsidiaries 1958-1995. Thirty-seven years with Chevron equally divided between exploration assignments in the western U.S. (seven years in Bakersfield) and overseas, the latter including five years in Australia and Indonesia, plus assignments with the Corporate Computer Service and Corporate Planning groups. Latest two positions were General Manager, Exploration, for the western U.S., and Corporation Chief Geologist.

### **National AAPG**

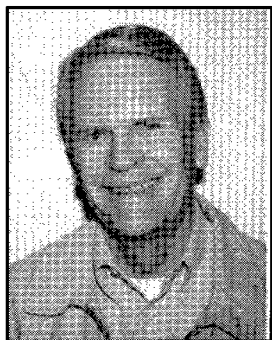
1979-1982 Visiting Petroleum Geologist  
1995-2001 House of Delegates  
1998-1999 Chairman Technical Program Coordinator, San Diego Annual Meeting  
1995-1997 Standing Technical Program Committee  
1994-1995 Corporate Liaison Committee  
1998-Present Youth Activities Committee;  
Chair, Teacher of the Year subcommittee  
1997-Present Trustee Associate  
1992-1996 Liaison Committee

### **Pacific Section Activity**

1995 Annual Meeting Committee  
2000 Session Chair

### **Memberships**

Northern California Geologic Society  
1995-1997 Counselor  
1997-1998 Program Chair  
1998-1999 President-elect  
1999-2000 President American Geological Institute  
1992-1996 Human Resources Advisory Committee  
1992-Present Advisory Committee, Grades 5-8 Investigating Earth Systems (new text)  
1997-Present Advisory Committee, Grades 9-12 EarthComm (new text)



## Dalton Lockman

**Senior Exploitation Geologist,  
Exxon Company, U.S.A., Alaska  
Interest Organization**

### **Education**

Whittier College, BA Geology,  
1979  
Wright State University, MS  
Geology, 1981

### **Employment**

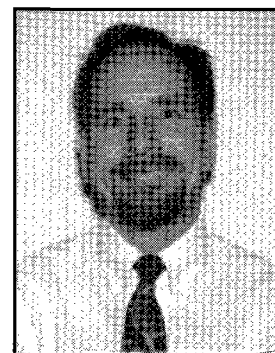
1981-1986 Production Geologist, Alaska Group, Exxon Co. USA  
1986-1988 Production Geologist, California Group, Exxon Co. USA  
1988-1992 Production Geologist, Exxon San Joaquin Production Company  
1992-1998 Production Geologist/Operations Coordinator, Exxon Co. USA, Santa Ynez Unit Production Organization  
1998-Present Production Geologist, Alaska Operations, Exxon Co. USA

### **Pacific Section Activity**

1994 General Chairman, Pacific Section AAPG Convention  
1996-1998 Pacific Section AAPG Continuing Convention Committee  
1996-1997 Pacific Section AAPG President-Elect  
1997-1998 Pacific Section AAPG President  
1998 General Vice Chairman, Pacific Section AAPG Convention  
1998-1999 Pacific Section AAPG Past President

### **Memberships**

California Registered Geologist  
Member AAPG, SEPM, GSA  
Member Pacific Section AAPG  
1989-1990 Vice President, Coast Geological Society  
1990-1991 President, Coast Geological Society  
1998-Present Treasurer, Alaska Geological Society  
Member Geophysical Society of Alaska



# CSUB GeoTechnology Center – Winter Quarter Courses

## ***I. INTRODUCTION TO GEOGRAPHIX***

**Who Should Attend?** Exploration and development geologist with little or no experience with the GeoGraphix Software Package.

**When is it?** Five sessions (Feb. 8, 10, 22, 24 and March 2) for four hours each (6-10 PM).

**Where is it?** CSU Bakersfield Science II Room 287

**Course Description:** Introduction to GeoGraphix Geological Software Package. GeoGraphix is designed to provide a complete set of tools to aid the geologist in managing and analyzing the wide variety of data used in the exploration and development of oil and gas reservoirs. The class project will cover: database management, loading well data, creating structure and isochore maps, performing volumetric calculations, creating cross-sections, and displaying the products. With a local oilfield as the dataset, the geologist will explore the WellBase, Cross-Section, Isomap, Land-Net, and Presentation Modules of the GeoGraphix Software Package.

**Course Objectives:**

1. an understanding of the basics of GeoGraphix
2. a method of maintaining a GeoGraphix database
3. an understanding of how to load data into GeoGraphix
4. an understanding of how to create and display filters and layers
5. the ability to create and edit a structure contour map
6. the ability to create an isochore map using grid manipulations
7. the ability to perform volumetric calculations
8. the ability to create and edit cross-sections
9. the ability to create montage displays
10. learn many tricks, tips, and pitfalls within GeoGraphix

**Instructors:**

Bill Fedewa, Independent Geological Consultant

Brian Hirst, Pacific Geotechnical Associates, Inc.

**Cost and Registration Deadline:** \$350 – February 1, 2000.

**Max Enrollment:** 12

## ***II. INTRODUCTION TO PETRA***

**When is it?** Three sessions (March 20, 22, and 27) for four hours each (6-10 PM).

**Course Description:** Forthcoming.

**Instructor:** Richard Pulley

**Cost and Registration Deadline:** \$210 – March 13, 2000

**Max Enrollment:** 12

### ***Registration Information***

**Without University Credit:** Send contact information (phone # and/or email address) and a check for the entire course fee to *Dr. Jan Gillespie, Department of Geology, California State University, 9001 Stockdale Highway, Bakersfield, CA 93311.*

**Make Check payable to:** *CSUB Foundation – GTTC*

**With University Credit:** Same as above but also contact Rob Negrini (see below)

***for further information contact:***

**Jan Gillespie, Center Director:** 664-3040 or jan@cs.csubak.edu

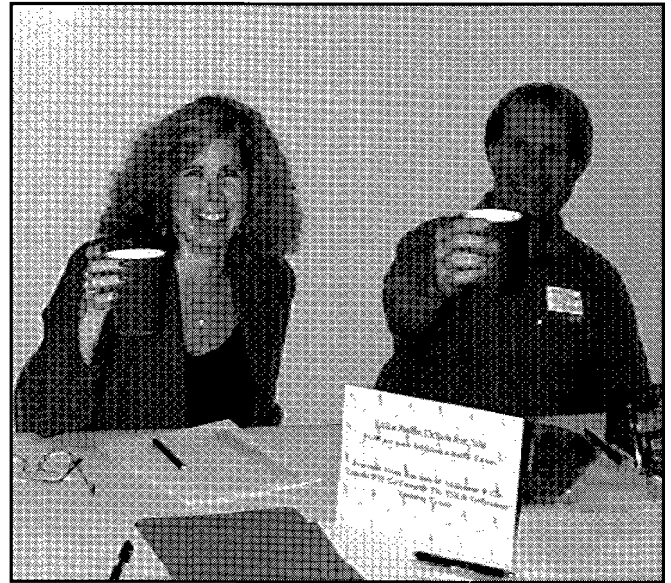
**Rob Negrini, Chair of Physics and Geology:** 664-2185 or rnegrini@cs.csubak.edu

# San Joaquin Geological Society Honors Nat MacKevett

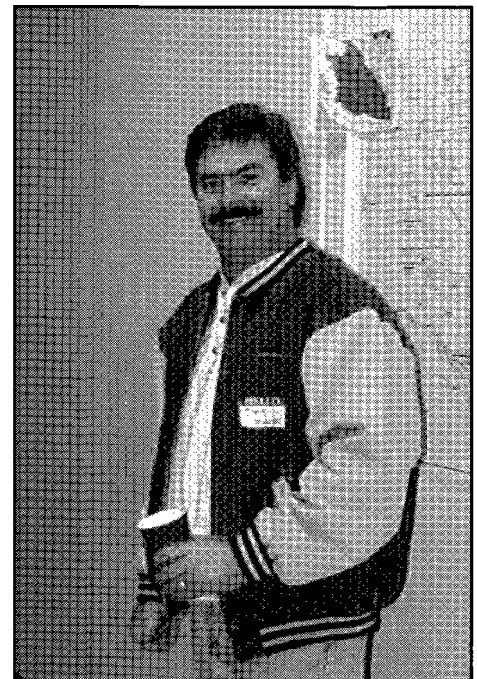
The December monthly meeting of the San Joaquin Geological Society honored Nat MacKevett for his outstanding contributions to the field of Geology.



*(l-r) Mark Wilson, Jim Elison and Nat MacKevett*



*Cynthia Huggins and Mike Ponik toast Nat*



*Tom Skinner*



## Pacific Section Nominee Wins National AAPG Teacher of the Year Award

Peggy Lubchenco, Pacific Section AAPG Teacher of the Year 1999, has won the National AAPG Teacher of the Year Award which will be presented at the 2000 national convention in New Orleans, Louisiana.

Lubchenco, who developed and teaches an exceptional earth science program at La Colina Junior High School in Santa Barbara, California previously won a \$200 award from the Pacific Section at our last convention in Monterey.

Local news media in Santa Barbara have interviewed Ms. Lubchenco about winning the award. While she had plans to originally be in New Zealand, she has stated that she would like to attend the convention in New Orleans.

WELL INFORMATION AND INSTRUMENTATION

 **EPOCH**

3919 ROSEDALE HIGHWAY  
BAKERSFIELD, CALIFORNIA 93308

661-328-1595

661-635-1452 DIRECT

661-328-1623 FAX

661-838-7978 CELLULAR

LES COLLINS

WEST COAST DIVISION MANAGER

CALIFORNIA REGISTERED GEOLOGIST #3907 [lcollins@nabors.com](mailto:lcollins@nabors.com) E-MAIL

**Petroleum  
Data  
Research**



Well History Analysis  
Production Data

Wellbore Schematics  
Data Management

**Janet Schroeder**  
Consultant

13264 Elmrock Avenue  
Moorpark, CA 93021  
Phone/Fax (805) 523-3097

## “Geology of the Midway-Sunset Oil Field and Adjacent Temblor Range”

Pacific Section AAPG Guidebook #75 is a 425 page, comprehensive look at the largest producing oilfield in the lower 49 states. It contains color images of maps, cross sections, logs and core photographs. A large (1:48,000) surface geology map is included. Midway-Sunset is one of several billion barrel oil fields located around Bakersfield, California, U.S.A. Steam injection and horizontal drilling are a big part of the activity at Midway-Sunset. Projects currently underway in this field could easily push its production over 200,000 bopd.

This field guidebook was originally published in 1996 and reprinted in 1997. This third reprinting in 1999 includes only 60 copies available for public sale. If interested in obtaining a copy please send a check in the amount of \$205.00 to:

**Pacific Section AAPG  
Publications  
P.O. Box 1072  
Bakersfield, CA 93302**  
**For additional information contact:**  
**Larry Knauer**  
**(661) 392-2471 (w) (661) 391-4303 (f)**  
**[knauelc@texaco.com](mailto:knauelc@texaco.com)**



## **Tephrochronology Featured As An Important Dating and Stratigraphic Tool On October 16th NCGS Field Trip**

The NCGS was extremely fortunate to get **Dr. Andrei Sarna-Wojcicki** and **James P. Walker** of the U.S. Geological Survey Tephrochronology Laboratory in Menlo Park to lead a one-day field trip to examine Neogene volcanic ash deposits in the East Bay Hills. The October 16th event was blessed with excellent weather conditions and completed the 1999 NCGS field trip season in a grand fashion.

Tephrochronology is the science of dating and correlating volcanic tephra, or air-fall volcanic eruptive events, to establish chronostratigraphic control in sedimentary sequences. Dr. Sarna-Wojcicki is a pioneer in this field, and has been using this technique to fine-tune Bay Area stratigraphy, to correlate nonfossiliferous sediments and sedimentary facies, and to determine an absolute time scale based on datable volcanic eruptive events. His initial contribution to this field was his doctoral thesis work at U.C. Berkeley in the late 1960's, and he has continued to refine and expand his work in this field for the last 30 years. Tephrochronology has a multi-faceted appeal in that it introduces one to the fascinating field of geochronology and to a forensic style of petrographic and geochemical "fingerprinting" techniques that allow one to date and correlate various ash layers over wide distances. The information gleaned from these studies provides insight into the frequency of volcanic activity in the Bay Area over time, and can be used to pinpoint the ultimate eruptive sources of the tephra. The fortuitous consequences of these eruptive events, which essentially form time horizons in the sedimentary record, is their usefulness in unraveling the complex sedimentary stratigraphy in the Bay Area, particularly where key fossil evidence is absent.

The trip itinerary would take the group from just south of Livermore near Del Valle Reservoir to the Los Medanos Hills just south of Pittsburg on the shore of Suisun Bay. A fifth stop was scheduled for a location just east of the Carquinez Strait to an eruptive center at the southeast corner of the Sonoma Volcanic field that was a source of some of the Neogene tephra layers to be examined that day. As the group headed east on I-580 toward Livermore, Andrei pointed out the low hills just north of the freeway that form the northern edge of the Livermore Valley. These hills are underlain by the poorly exposed non-marine Pliocene Tassajara and Upper Miocene Sycamore Formations. As the vehicles exited and headed south on North Livermore Avenue they crossed over Las Positas Creek and viewed a the convex profile of a late Pleistocene stream terrace that has been interpreted as geomorphic evidence for continued recent deformation along bedrock anticlinal structures. South of Livermore the vehicle crossed the sinistral Las Positas fault

trending NE-SW which separates the Plio-Pleistocene Livermore Gravels from Quaternary alluvium to the NW. It connects with the dextral Greenville Fault to the NE, and with the Williams and Verona thrust faults to the SW. The two pyroclastic deposits are exposed in a roadcut along Arroyo Mocho a short distance from the entrance to Del Valle recreational park where Mendenhall Road intersects Del Valle Road. The terraces exposed along the arroyo have been uplifted along the northern Diablo Range rising to the south. The tuffs are ~3 meters (lower) and ~1.8 meters thick, separated by about 7.6 meters of fine to medium-grained stream sands and alluvial gravels of the Sycamore (Tassajara) Formation underlying the coarser-clasted Livermore Gravels. The lower tuff unit is identified as the Lawlor Tuff, dated at 4.83 m.y., and the upper unit as the 4.71 m.y. old Huichica Tuff. Both are water-lain and have been correlated by petrographic and chemical techniques with other tuff units in the Bay Area, and with units encountered offshore in the Pacific Ocean by the Deep Sea Drilling and Ocean Drilling Projects. The dates given were performed by the  $Ar^{40}/Ar^{39}$  technique and are a refinement of older, possibly contaminated K/Ar ages.

Andrei gave a detailed description of the neutron activation, x-ray fluorescence, and electron microprobe techniques used to establish the trace and minor element histograms of the glass shards from tephra that is used as one of the tools to correlate various pyroclastic deposits over great distances. Petrographic examination and trace element analysis of glass shards indicate the lower tuff is associated with the type Lawlor Tuff in the Los Medanos Hills to the north and was erupted from a vent not far from the type locality at the southeastern end of the Sonoma Volcanic field. Layers of the Lawlor Tuff have been found as far south as the western Los Angeles basin, and as far north as Alturas in northeastern California. Sedimentary and stratigraphic features at this locale suggest the tuffs were deposited when the Diablo Range, the source of the alluvial fan and stream deposits interbedded with the tuff units, was topographically lower than it is today. The overlying Livermore Gravels, with their coarser clasts, attest to an uplifted and higher energy source to the south in Plio-Pleistocene times. Before leaving for the next stop, the group examined an exposure of Franciscan ophiolitic pillow basalts in fault contact with the Sycamore Formation.

The vehicles traveled northward across I-580 and took county backroads across the Tassajara (Rasmussen) anticline and the Sycamore Valley (Highland) syncline to an exposure of the Roblar Tuff off Camino Tassajara east of San Ramon and Danville. The tuff is water deposited and reworked and dips vertically in this outcrop. It is situated in the upper Sycamore Formation and has been chemically correlated with the 6.25 m.y. old Roblar Tuff from its type area in the marine Wilson Grove Formation near Petaluma and

*(Continued on page 10)*

*(Continued from page 9)*

Sebastopol. It has been correlated with tephra units exposed north and south of San Pablo Bay, in the Berkeley Hills Block near Lafayette, and in Deep Sea Drilling Project cores taken in the Delgada Submarine Fan off Cape Mendocino. These various exposures and the sediments bounding them suggest a distributory drainage system flowing roughly east to west through alluvial, lacustrine, estuarine, shallow marine, and shelf marine environments as a single time-line event. Dr. Sarna-Wojcicki posed a palinspastic reconstruction of the greater Bay Area and offshore Mendocino coast back to 6.25 m.y. ago that he used to estimate displacements along the San Andreas Fault system since this time. The apparent offset across these faults yields partitioned displacement rates along the San Andreas, Hayward, Calaveras, and other faults that is consistent with those derived by independent techniques. The only complication is the necessity to place some motion along the Tolay or a similar now inactive fault segment to account for the total amount of apparent displacement over this time interval. Details, details! However this may also be telling us something about the displacement history of this complex fault system.

The third stop was at Shell Ridge Recreational Area west of Mt. Diablo in Walnut Creek. The ridge is a prominent outcrop of the lower Cierbo Formation, and the Shell Ridge Open Space itself is underlain by units from Eocene to Pliocene age. The ridge to the south across Indian Valley from Shell Ridge is composed of Neroly Formation volcanolithic sands. The sands are mostly derived from andesitic sources. Jim Walker is studying the sedimentology and provenance of these units. At this stop he described the lithology, sedimentology, and paleoenvironment of the Neroly at this location. The Neroly is correlated with the volcanic Mehrten Formation in the northern Sierra Nevada Range. At Shell Ridge both the Cierbo and Neroly Formations have Sierran sources (provenance) for the sand size fractions, a dissected volcanic arc for the Cierbo, and an active arc source for the Neroly. Sources were more heterogeneous for the Cierbo than the Neroly, but both indicate their sources were not Franciscan on the east side of the Calaveras Fault. Paleocurrent studies suggest the Neroly on this side of Mount Diablo was from a Mehrten-type source in the northern Sierras, whereas the unit in the Livermore area contains a Franciscan component and paleocurrent directions that imply the Diablo Range deflected the Sierran fluvial system in this area to the NNW. The group examined quarry outcrops of the Neroly Formation. The Lawlor Tuff has been identified in the overlying Green Valley/Tassajara Formations, and provides key stratigraphic data to help correlate and identify outcrops of this unit around Mount Diablo. This has been an important tool for Jim's on-going study of the quite variable Neroly facies relationships in the East Bay region.

Stop four was at the Alves Construction Company quarry in the Los Medanos Hills just south of Pittsburg.

Here the Neroly Formation (called the Cierbo by some) unconformably underlies the Lawlor Tuff. The Los Medanos Hills are an asymmetrical anticline bounded on the south-west by the Clayton and other faults that may be associated with detachment faulting. A cross section of the fold from SW to NE reveals a thick section of Tertiary sedimentary rocks: the Eocene Markeley Formation, the Oligocene (or perhaps Miocene?) Kirker Formation (these are mostly SE of Bailey Road which cuts across the anticline), the Miocene Cierbo and andesite-derived Neroly Formations, the 4.8 m.y. Lawlor Tuff, and the Los Meganos Gravels (the Wolfskill Gravels or Tehama Formation) dated as 3.5 m.y. old to upper Quaternary in age. The Alves quarry walls slice through excellent exposures of laminated sediments, graded bedding, and textbook examples of cross bedding. It is close to the contact between the Neroly and Cierbo Formations. The Cierbo contains abundant pelecypod (clam) and gastropod fossils, whereas the alluvial Neroly produces some outstanding petrified wood specimens. The group trekked uphill to the south to examine some of the fossiliferous Cierbo beds and entered the lower Cierbo (Briones) Formation where a tuff unit correlated with the Roblar unit of stop three is exposed. The Neroly in this area is tephrochronologically (supercalifragilistically?) dated at between 9.8 to 11.1 m.y., although it can encompass a much broader time range than this, especially at the younger end. As the group climbed up Hill 566 (to the northwest of the quarry, Andrei pointed out some faulting displacement at the Lawlor Tuff-Neroly unconformity. The lower Lawlor Tuff in this location is a clast-supported air-fall tuff deposited directly on the subaerial Neroly erosional surface. The upper Lawlor Tuff in this outcrop is a matrix-supported ash-flow tuff. The size of the pumice fragments indicates close proximity to the eruptive center. From this vantagepoint the group could survey Suisun Bay and the lower foothills to the north (up section), where Andrei has found the 3.4 m.y. Putah Tuff near the base of the Los Medanos Gravels. This volcanoclastic deposit crops out near the base of the Tehama Formation further north in Yolo County near Putah Creek, which exits from Lake Berryessa.

As the day was growing short, the fifth stop across the Carquinez Straits was cancelled, but the guidebook has directions to this 160 meter-thick outcrop of pumice lapillilithic ash-flow tuffs chemically identical to the Lawlor Tuff. The Lawlor Tuff is absent west of the Coast Ranges and in deep sea cores, suggesting that winds blew eastward and that there was no connection westward to the ocean at this time. The Great Valley at this time was a large integrated drainage basin that emptied into a marine embayment extending across the Kettleman Hills and Temblor Range that connected to the ocean near to and north of the present Monterey Bay. Evidence for this is the occurrence of the Lawlor Tuff at the top of the marine Etchegoin Formation in the Kettleman

*(Continued on page 14)*

**THEY SAID IT COULD NEVER HAPPEN.....**

**Millennium Meeting in Long Beach, California**

**June 18-23, 2000**

**Westin Hotel, Long Beach, California**

**Pacific Section, American Association of Petroleum Geologists  
&  
Western Region, Society of Petroleum Engineers**

- The annual meetings of these two groups will be merged into one joint meeting.
- The technical program is planned to accommodate the interests of both groups.
- Outstanding speakers and activities are on the docket.
- The exhibits and presentation rooms are planned to provide optimum interaction of attendees.
- The accommodations and the surrounding revitalized coastal community provide a perfect setting.
- Bring the family and enjoy the tourism for which Southern California is famous.

**PSAAPG**

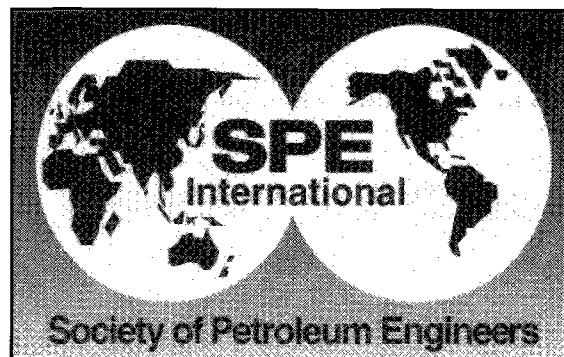
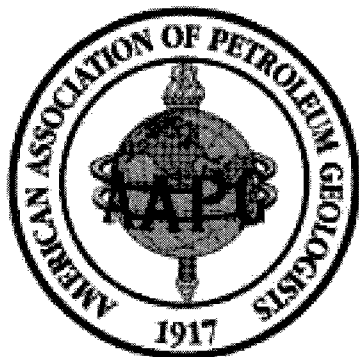
**Don Clarke  
Department of Oil Properties  
211 East Ocean Blvd.  
Suite 500  
Long Beach, CA 90802**

**(562) 570-3915  
doclark@ci.long-beach.ca.us**

**SPE**

**Glenn Swanson  
Duke Engineering & Services  
12100 Wilshire Blvd.  
Suite 430  
Los Angeles, CA 90025**

**(310) 979-4777 EXT. 11  
gswanson@duke-energy.com**



# NEWS FROM THE AFFILIATED GEOLOGICAL SOCIETIES

## Alaska

On January 20th David LePain, DGGS, speaks on "Sequence Stratigraphy North Slope, Alaska."

February 17th will see Roland Gangloff (UAF Museum) speak on "Colville River Dinosaurs"

The March 16th meeting will be announced at a later date.

Fall meetings are held the third Thursday of every month. Meetings are at the Anchorage Hilton, 11:30-1:00

Call Agatha Rutka at Arco with reservations for the meetings at (907) 263-4414 or e-mail to: [arutka@mail.arco.com](mailto:arutka@mail.arco.com).

*Alaska Geological Society  
P.O. Box 101288  
Anchorage, AK 99510  
Contact: Mark Myers  
(907) 263-4205  
<http://www.seclabs.com/ags>*

## Coast

January 18, will see Dr. Steve Bachman, United Water District, who will give a talk on "3D Models Of Groundwater In Ventura County."

February 15, 2000 Regular Dinner Meeting featuring Knut Bjorlykke, from the AAPG, speaking on "Clastic Diagenesis in Sedimentary Basins"

March 21, 2000 Regular Dinner Meeting featuring Craig Prentice, of Fugro West, Inc., speaking on "Earthquake retrofit of the Oakland Bay Bridge"

Reservations:

By Web Browser (On-Line)

By E-mail, Attn, Lorien Bareng at

[lorandshi@aol.com](mailto:lorandshi@aol.com)

(Please RVSP via E-mail if possible)

By phone, Sinclair Well Products and Services, Attn. Lance Lawhon at (805) 653-7975

By FAX , at (805) 653-7452

**AMERICAN LEGION HALL  
83 S. PALM STREET, VENTURA,  
CA**

NORTHBOUND Highway 101 – Take California Street Exit, West (Left) on Thompson Blvd, North (Right) on Palm.

SOUTHBOUND Highway 101 – Take Ventura Ave. Exit, East (Right) on Thompson Blvd., North (Left) on Palm.

Social Hour – 6:00 p.m.

Dinner – 7:00 p.m.

\$12 – With Reservation

\$17 – Without Reservation

\$ 5 – For Students and K-12 Teachers

*Coastal Geological Society  
P.O. Box 3055  
Ventura, CA 93006  
Contact: Steve Richardson  
(805) 648-4996  
[www.coastgeologicalsociety.org](http://www.coastgeologicalsociety.org)*

## Los Angeles

Upcoming meetings:

Dr. Gary Axen will speak on Detachment Faulting in the Evolution of the Northern Gulf of California and Salton Trough on January 13, 2000 at The Grand at Willow Street Centre.

**The Meeting Has Moved Again!!!!!!  
The Los Angeles Basin Geologic So-**

ciety will meet at The Grand at Willow Street Centre. Exit the 405 Freeway at Lakewood Blvd. south. Turn right onto Willow Street and right again onto Grand Ave. Free parking is under the building. The meeting will be in the Tiffany Room.

February 10, 2000 Dr. S. Fred Singer's talk will be "Global Warming, Hot Talk, Cold Science"

March 16, 2000 Dr. Kim Bishop from CSULA will talk on "Previously Unrecognized Mega-landslides of the Owens Valley"

*Los Angeles Geological Society  
c/o Don Clarke  
Dept. of Oil Properties  
211 E. Ocean Blvd. Ste. 500  
Long Beach, CA 90802  
(562) 570-3915*

## Northern California

Upcoming talk:

Wednesday, January 26. Paul R. Renne, University of California, Berkeley, "Implications of a Revised Geochronology for the Proto-Atlantic Fragmentation of Pangea"

All talks will be held on the last Wednesday of each month at the Orinda Masonic Center, 9 Altarinda Road, Orinda, CA. at 6:30 PM Social, 7:00 PM talk. Cost is \$5.00

*Northern California Geological Society  
9 Bramblewood Court  
Danville, CA 94506-1130  
Contact: Dan Day  
(510) 294-7530*

## Northwest

For meeting reservations please call Shelly Thomas at (503) 848-2947 or Treck Cardwell at (503) 226-4211 ext. 4689.

**Northwest Energy Association**  
P.O. Box 6679  
Portland, OR 97228-6679  
Contact: William Rodger, Jr.  
(503) 224-3380

## Sacramento

The annual Gas Patch Party was held December 10th. Attendance was good with the highlight of the evening being the annual poem by Al Alder.

The Jan 19th meeting will see Dan Peyneveld of Calpine Gas Co. speak on "The Present and Future Role of Calpine Gas Gathering and Power Plant Systems in the Sacramento Valley".

On February 16th, Roland Bain will talk on "Drilling Activity in the Sacramento Valley in 1999".

Noon luncheon meetings are held at the HUNGRY HUNTER RESTAURANT, 450 Bercut Drive, Sacramento.

**Sacramento Petroleum Association**  
P.O. Box 254443  
Sacramento, CA 95865-4443  
Contact: Scott Hector  
(916) 758-5951

## San Joaquin

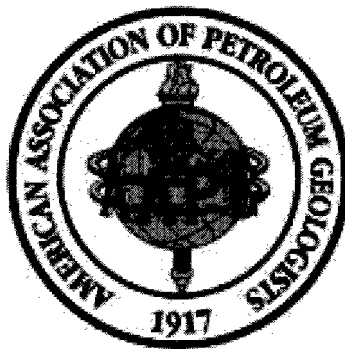
The January 11th meeting saw Dr. Tanya Atwater speak on "Tectonic History of Western North America".

The February 14th meeting is spouses/ significant other night and will feature a talk by Mike Clark, Chevron.

Cost is \$15 with reservations, \$18 without. Please contact Cynthia Huggins, (661) 392-2278, or e-mail to: [huggica@texaco.com](mailto:huggica@texaco.com)

Dinner Meetings are held the second Tuesday of each month (except summer months) at the American Legion Hall, 2020 H street, Bakersfield. The social hour starts at 6:00 p.m., dinner is served at 7:00 p.m. and the talk begins at 8:00.

**San Joaquin Geological Society**  
P.O. Box 1056  
Bakersfield, CA 93302  
Contact: Mark Wilson  
(661) 392-3047  
<http://www.sjgs.com>

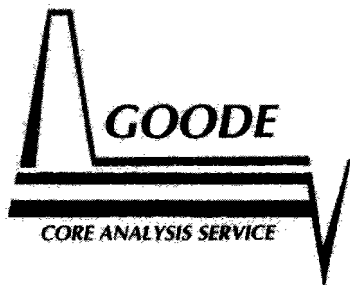


## John E. Kilkenny Memorial Grant Winner Announced

William Gordon Shipp of the University of California, Davis has been awarded the 1999 Kilkenny Memorial Grant for his abstract entitled "Determination of Acid Rock Drainage and Fluid Flux Using Geochemical Tracers: Sulphur Bank Mercury Mine, Superfund Site, Clear Lake, California".

Mercury mining on the shores of Clear Lake, California has contaminated the lake sediments with inorganic mercury (cinnabar). Despite the low solubility of cinnabar (HgS), mercury has entered the food chain and is bioaccumulating in the highest trophic levels. A key reaction leading to the bioavailability of mercury is methylation, which is partially mediated by sulfate-reducing bacteria in organic-rich, but sulfate-poor, lake sediments. Low pH, sulfate-rich fluids have recently been documented to be discharging out of the lake bottom near the Sulphur Bank Mercury Mine, an EPA Superfund site.

The study used a combination of conservative and non-conservative tracers to identify the source of acid-sulfate waters in Clear Lake.



**Bryan A. Bell**

(805) 322-5540  
FAX 322-5576  
24 Hour Service

1400 Easton Drive, Suite 111 • Bakersfield, CA 93309

*Joseph F. Elliott*

**Geophysical Consultant**

**Exploration Management**

International/domestic  
Interpretations  
synthetics  
modelling

Office: (949) 240-1505

26801 Lariat Circle  
San Juan Capistrano, CA 92675

(Continued from page 10)

Hills. Andrei concluded with a discussion of the age range of Sonoma volcanic activity (~8 m.y. to ~2.5 m.y. ago), and a poster session of Alan Bartow's reconstruction of the Central Valley and Coast Range at 7 m.y., 4 m.y., and 600,000 years ago. He also described the glacial Lake Clyde (Central Valley) which ultimately breached the Carquinez Straits and exited through the Golden Gate, post-dating the Salinas Valley-Monterey Bay drainage of the Central Valley. His discussion also included descriptions of San Francisco Bay ~125,000 years ago and lower sea level stands that left the Farallon Islands high and dry 20,000 years ago.

This excellent field trip merits a longer narrative, and produced a guidebook that no doubt will be coveted by field trip enthusiasts. Dr. Sarna-Wojcicki and Jim Walker went through considerable effort to produce an itinerary that has an easy-to-follow road guide to five premier volcanoclastic outcrops in the East Bay, easily done in one day. Some stops will require notification of landowners and county facilities for access. We thank Dr. Sarna-Wojcicki and Jim Walker for leading this superb trip to examine these tephra deposits and to discuss their association with various complex Neogene sedimentary units in the Mount Diablo area. This guidebook can be purchased from the NCGS by calling the newsletter at 925-294-7530.

This trip ends an extraordinarily active field trip season by the NCGS, all planned and executed by Field Trip Coordinator **Bill Howell**. Bill has provided the NCGS with an outstanding series of events that included four trips into the Diablo Range, a look at the largest landslide in the Bay Area led by a renowned landslide expert, a sojourn up Pleasanton Ridge for the annual family picnic, a unique raft trip down the American River to view the Mesozoic Sierra Foothill terranes, and an introduction to East Bay tephrochronology by a leading expert in the field. Bill certainly deserves credit for planning this exhausting schedule and handling all logistic, transportation, and registration duties.

## Dr. Perry Ehlig

It gives me great sadness to inform you that California State University, Los Angeles Professor Perry Ehlig died suddenly on December 26 as a result of unknown causes. Memorial Services were held at St. Peters by the Sea Church in Rancho Palos Verdes on January 6.

Professor Ehlig's contributions to the Department were monumental. He was a role model for students and faculty alike. He had served the students of California State University at Los Angeles continuously since 1956. He retired in 1992 but continued to teach on a volunteer basis. His interests included petrology and the structure of basement rocks in addition to Cenozoic faulting in southern California.

Dr. Ehlig received his Ph.D. from the University of California, Los Angeles in 1958.

The family has requested donations to the Perry Ehlig Scholarship in lieu of flowers.

Bob Stull - CSULA

## AT THE RIG SITE... Thanks To Dan Steward



# **New Publication**

**Published for the 1999 Pacific Section Convention**

## **“Late Cenozoic Fluid Seeps and Tectonics along the San Gregorio Fault Zone in the Monterey Bay Region, California”**

This 156-page volume contains road guides to two field trips plus several papers. Color plates and a color cover complete this very informative new addition to the PSAAPG's collection of publications dealing with West Coast geology.

**To order please send a check for \$25.00 made out to:**

**Publications  
Pacific Section AAPG  
P.O. Box 1072  
Bakersfield, California 93302**

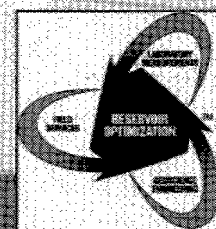
**Contact: Larry Knauer (661) 392-2471 or [knauelc@texaco.com](mailto:knauelc@texaco.com)**

## **Reservoir Characterization**

- **Sidewall Optimization Technology**
- **Conventional Core Analysis**
- **Advanced Rock Properties**
- **Reservoir Information Browser**
- **NMR Log Calibration**

**CORELAB**

**Bakersfield TEAM      Anchorage TEAM**  
3430 Unicorn Road      600 W. 58th Ave., Unit D  
Bakersfield, CA 93308      Anchorage, AK 99518  
(805) 392-8600      (907) 349-3541





*Deadline for the next  
issue is:  
February 10, 2000*

*Check out the Pacific Section  
Web Site at:*

*<http://www.psaapg.org>*

**NEWSLETTER** of the Pacific Section - American Association of Petroleum Geologists is published bi-monthly by the Pacific Section. Material for publication, requests for previous copies, and communications regarding advertising costs should be addressed to the editor -

**ALLEN BRITTON**, Core Laboratories, Inc.,  
3430 Unicorn Road, Bakersfield, CA 93308.  
E-mail: [corebak@ix.netcom.com](mailto:corebak@ix.netcom.com)

CHANGE OF ADDRESS, subscription and membership inquiries should be directed to:  
**MEMBERSHIP CHAIRMAN, PACIFIC SECTION AAPG, P.O. Box 1072, Bakersfield, CA 93302.**

TO ORDER PUBLICATIONS OF THE PACIFIC SECTION AAPG write to: **PUBLICATIONS COMM.: PACIFIC SECTION AAPG, P.O. Box 1072, Bakersfield, CA 93302.**

**PACIFIC SECTION AMERICAN ASSOCIATION  
OF PETROLEUM GEOLOGISTS  
OFFICERS 1999-2000**

President	(661) 392-2464	<b>TERRY THOMPSON</b> <a href="mailto:thomptw2@texaco.com">thomptw2@texaco.com</a>
President Elect	(661) 326-5506	<b>KAY PITTS</b> <a href="mailto:Klpitts@aeraenergy.com">Klpitts@aeraenergy.com</a>
Vice President	(805) 494-2374	<b>DALE KUNATOMI</b> <a href="mailto:oildale@acninc.net">oildale@acninc.net</a>
Secretary	(661) 323-6828	<b>FRANK CRESSY</b> <a href="mailto:fcressy@prodigy.net">fcressy@prodigy.net</a>
Treasurer	(805) 389-7710	<b>HAROLD SYMS</b> <a href="mailto:harold.syms@mms.gov">harold.syms@mms.gov</a>
Past President	(510) 234-6214	<b>MEL ERSKINE</b> <a href="mailto:merskine@ix.netcom.com">merskine@ix.netcom.com</a>

**Newsletter Staff**

Editor	(661) 392-8600	<b>ALLEN BRITTON</b> <a href="mailto:corebak@ix.netcom.com">corebak@ix.netcom.com</a>
Historical	(661) 324-0379	<b>BILL RINTOUL</b>
Geological	(661) 323-6828	<b>FRANK CRESSY</b>

**Associate Editors**

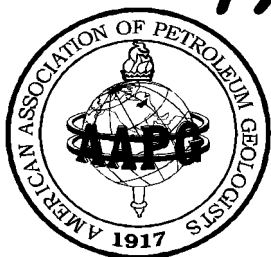
Alaska Geological Society	(907) 564-5677	<b>GARY PELKA</b> <a href="mailto:pelkagj@bp.com">pelkagj@bp.com</a>
Coast Geological Society	(805) 648-4996	<b>STEVE RICHARDSON</b> <a href="mailto:richconinc@aol.com">richconinc@aol.com</a>
Los Angeles Basin Geol. Soc.	(562) 570-3915	<b>DON CLARKE</b> <a href="mailto:doclark@ci.long-beach.ca.us">doclark@ci.long-beach.ca.us</a>
Northern California Geologic Society	(510) 284-5480	<b>DONALD LEWIS</b> <a href="mailto:donlew@worldnet.att.net">donlew@worldnet.att.net</a>
Northwest Energy Association	(503) 226-2411 ext.4689	<b>BOB BURNHAM</b> <a href="mailto:rhh@exchange.gasco.com">rhh@exchange.gasco.com</a>
Sacramento Petroleum Assoc.	(916) 758-5951	<b>SCOTT HECTOR</b>
San Joaquin Geological Society	(661) 392-3047	<b>MARK WILSON</b> <a href="mailto:malw@chevron.com">malw@chevron.com</a>

**NEWSLETTER**  
**Pacific Section A.A.P.G.**  
**Post Office Box 1072**  
**Bakersfield, CA 93302**

**BULK RATE**  
**U.S. POSTAGE**  
**PAID**  
**BAKERSFIELD, CA**  
**PERMIT NO. 1163**

1\*7\*\*\*\*\*5-01611 93311

SOC: SJ-ALL EXP'S: NON  
KNAUER, LARRY  
2409 NANTES WAY  
BAKERSFIELD CA 93311



# PACIFIC PETROLEUM GEOLOGIST NEWSLETTER

of the Pacific Section

American Association of Petroleum Geologists

March 2000 NO. 2

## A MESSAGE FROM THE PRESIDENT

In past issues of the *Pacific Petroleum Geologist Newsletter*, I have focused on the programs, officers, and volunteers associated with the Pacific Section AAPG. This month I would like to take the opportunity to discuss the organization itself, specifically, who we are in relation to the national AAPG and the local geological societies.

The Pacific Section is one of six sections that comprise the American Association of Petroleum Geologists in the United States. Our section, with a 1999-2000 membership of 844, includes the states of California, Oregon, Washington, Alaska, and Hawaii (a lot of members here!). The other U.S. sections are the Eastern, Gulf Coast, Mid-Continent, Rocky Mountain, and Southwest. Just for the record, we are the **oldest section** within AAPG! In fact, year 2000 marks the **75<sup>th</sup> anniversary** of the Pacific Section.

I recently attended a "Summit on Sections" at AAPG headquarters in Tulsa. At this conference, representatives from the six U.S. AAPG sections gathered to discuss a variety of common issues, including conventions, publications, outreach programs, committees, etc. I learned that each section operates rather independently with very different traditions and practices. However, one thing in common was a strong commitment to their members and to the goal of advancing and protecting the profession of petroleum geology.

Internally, the Pacific Section is made up of seven affiliated societies. These local organizations are the Alaska Geological Society (Anchorage, AK), Coast Geological Society (Ventura, CA), Los An-

geles Basin Geological Society (Los Angeles, CA), Northern California Geological Society (Concord, CA), Northwest Energy Association (Portland, OR), Sacramento Petroleum Association (Sacramento, CA), and San Joaquin Geological Society (Bakersfield, CA). The local societies have a direct impact on the geologic community. They provide a great deal of membership support in the form of monthly meetings, field trips, publications, and educational programs. In addition, usually it is one of the local societies that host the annual Pacific Section convention.

**Terry W. Thompson**  
**President, Pacific Section AAPG**

*Look for your PS-AAPG / SPE  
Convention Announcement  
Coming Soon In The Mail!*

## Inside this issue...

<b>Presidents Message .....</b>	<b>Page 1</b>
<b>John Forman .....</b>	<b>Page 2</b>
<b>Spencer F. Fine .....</b>	<b>Page 3</b>
<b>Calendar of Meetings .....</b>	<b>Page 4</b>
<b>PS-AAPG Candidates .....</b>	<b>Pages 5-7</b>
<b>AAPG Teacher of the Year .....</b>	<b>Page 6</b>
<b>News from the Societies.....</b>	<b>Pages 12-13</b>
<b>Ken Hunter Remembered .....</b>	<b>Page 15</b>

# JOHN ALEXANDER FORMAN

**August 17, 1927 to February 11, 2000**

John was born in Toronto, Ontario, Canada where he lived until 1947. He attended the University of Toronto as a math major. His parents immigrated to the United States in 1946 and bought a lemon grove in Glendora, CA. John joined them and enrolled at Pomona College where he studied geology with Dr. Alfred Woodford. He graduated in 1949 and then attended Claremont Graduate School where he received a M.A. in geology in 1951.

John married Dorchon Rubel in January, 1951 and was hired by General Petroleum (later Mobil Oil) in Los Angeles in May. His first assignment was in Ventura working for Chuck Edwards. In 1954 John was moved to the downtown Los Angeles office. From there he explored the Santa Barbara Channel and California offshore geology doing pioneering work in offshore geologic mapping by SCUBA.

In 1959 John was sent to Alaska to find oil on the North Slope, long before Prudhoe Bay. In the fall of 1963 John was moved back to Los Angeles and the Santa Fe Springs office. That year Mobil and Unocal formed an exploration partnership covering the California offshore area including the outer banks. Here Union and Mobil pioneered exploration methods such as drop coring, jet coring, SCUBA diving and deep submersible work with Jim Vernon, Necton and General Oceanographics. During that time he was also working on Washington and Oregon.

In 1972 Mobil opened an office in Denver and John bought a house in Boulder. There John bought a 1947 Cessna 140 so he and Dorchon and several of their sons could learn to fly. Four of the family became pilots and enjoyed geology and travel by small plane. He and Dorchon would fly their own little Cessnas while he explained the geology over the radio. One of their highlights was to fly the entire length of the San Andreas Fault. Another was circling the New Madrid Fault in the Midwest.

In 1976 John was transferred to Dallas, Texas where he worked in Overseas Frontier areas that included Norway and the Barents Sea, Greenland, the Faeroe Islands, Baffin Bay, the Central African Rift system, Barbados and the Eastern Caribbean, Antarctica and China.

In 1986 Mobil fired him so he started his own company working on Chinese oil exploration with Dr. Percy Pan, an ex-Mobil geophysicist. They had several interesting excursions and field trips into Northwestern China; specifically the Tarim, Junggar and Qaidam basins.

In 1996 Dorchon and John retired to their "ancestral home"

in Goleta, CA where he began drawing the cross sections between the Channel Islands and the Santa Ynez Mountains with Tom Redin, Marc Kamerling and James Galloway. He had returned to the geology where he started his professional life. His love of flying, sailing and family enriched his retirement.

He is survived by his wife Dorchon, his four children and ten grandchildren. In lieu of flowers, gifts in John's memory may be sent to Pomona College for the Woodford Geology Fund, Claremont, CA 91711. Or to an educational scholarship of your choice.

## POSITION AVAILABLE Part-time Executive Director

The California Council of Geoscience Organizations (CCGO), a non-profit mutual benefit corporation, seeks a part-time Executive Director to support a statewide organization comprised of twelve organizations (representing 3300 members) and 28 business members. CCGO advocates the use of sound geologic knowledge and practice in California by proposing, reviewing, and monitoring laws, regulations, and public policies.

The Executive Director works with the Board of Directors to assist in implementing CCGO's Strategic Plan and its goals in the areas of Legislation, Regulatory Review, Governmental Relations, Professional Practice, Public Outreach, and Member and Contributor Services. In addition, the Executive Director performs administrative duties and responsibilities prescribed by the Board of Directors. Member retention and recruitment is a key goal for the position.

Interested persons should send resume and a statement of qualifications by April 15, 2000, to:

CCGO  
Attn: Executive Director Search Committee  
1275 W. 14th Street  
San Pedro, CA 90731

Compensation approximately \$800 per month, assuming a minimum level of effort of 8 hours per week. The compensation and hours required are expected to increase during the coming year as membership grows.

J.M. "BUZZ" DELANO, JR.  
Consultant

Cell (661) 747-0337  
Work (661) 325-3987  
Fax/Home (661) 832-5229  
Work/Fax (661) 322-2941

**Delano Petrophysical**  
Consulting Services

Email: BuzzBake@aol.com  
5401 Business Park South  
Suite 214  
Bakersfield, California 93309

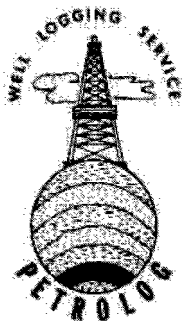
Dipmeter Analysis  
Tape Conversion Editing  
Expert Petrophysical Analysis  
Wellsite Supervision

**California Well Sample  
Repository  
California State  
University, Bakersfield  
9001 Stockdale Highway  
Bakersfield, CA 93311-  
1099**

**California's only facility for permanent storage  
and public use of cores, sidewall samples, drill  
cuttings and microfaunal slides**

Cores and cuttings from 5,000 wells  
Logs and well files for 25,000 wells

**For more information contact:  
Russ Robinson (curator)  
(661) 664-2324  
rrobinson@csubak.edu**



**PETROLOG**  
PETROLOG, INC.

JOHN T. WILLIAMS  
R.G. C.P.G.

**Geological Well Logging**

459 DOROTHY AVENUE  
VENTURA, CA 93003

(800) 750-4590 • (805) 642-2847 • FAX (805) 642-6550

**Spencer F. Fine  
1917 - 2000**

"Spence" passed away quietly and suddenly February 18th during his afternoon nap-- a "millionaire's choice". As he so was active to the last in his professional life, community affairs and hobbies, that his sudden death was a "I don't believe it" to his family and friends. We all will miss him greatly, remembering and cherishing the memories of our association and friendship, in the celebration of his life.

Spence's professional career began in 1947, shortly after receiving his MA in geology from UCLA, when he began as a field geologist with Richfield Oil Corporation. His geologic field talents and administrative abilities were soon recognized by Richfield management. By 1960, Spence had progressed to supervisor of all California exploration operations. During the next six boom years in the history of California oil exploration many of the important onshore and offshore Richfield discoveries can be attributed to Spences' efforts and geological skills.

In 1966, following Richfield's merger with Atlantic (now ARCO) Spence was moved to Sydney, Australia, as Western Pacific Exploration Representative, engaging in basin and broad scale geologic studies in Australia, New Zealand, and southeast Asia. From 1970 to 1975, he served as resident manager for TEXFEL with headquarters in Singapore, managing oil and mineral prospects in Southeast Asia.

Spence's contributions to Pacific Section are many, including Vice President in 1962 and serving as President in 1964. He was a founding member of the Coast Geological Society and served as President for the years 1953 -54. In recognition of his many contributions to the Pacific Section and to the geologic profession, Spence was awarded an Honorary Membership in the Pacific Section of the AAPG in 1986.

**Well Data Research**

*A Service Provider  
of*

**Historical Production & Injection Data  
for Wells within California**

***Initial Production to Present***

**(661) 324-5441**



5400 Rosedale Hwy

Bakersfield, CA 93308





# April 2000

Sun	Mon	Tue	Wed	Thu	Fri	Sat
						1 NCGS
2	3	4	5	6	7	8
9	10	11 SJGS	12	13 LABGS AGS	14 NW	15
16	17	18 Coast	19 SPA	20	21	22
23	24	25	26 NCGS	27	28	29
30						



# May 2000

Sun	Mon	Tue	Wed	Thu	Fri	Sat
	1	2	3	4	5	6
7	8	9 SJGS	10	11	12 NW	13
14	15	16 Coast	17 SPA	18 LABGS AGS	19	20
21	22	23	24 NCGS	25	26	27
28	29	30	31			

# Candidates for PS-AAPG President-Elect

## Allen Britton

**Regional Manager, Core Laboratories, Inc.**

### **Education**

New Mexico Tech, B.S., Geology, 1978

### **Employment**

1978-1980 Grade Control Geologist, Kerr-McGee Corporation, Ambrosia Lake, New Mexico.

1980-1984 Group Leader, Core Laboratories, Bakersfield, California.

1984-1987 Formation Evaluation Specialist, Core Laboratories.

1987-1990 Laboratory Supervisor, Core Laboratories

1990-1994 Senior Geologist, Core Laboratories

1994-Present Regional Manager, Core Laboratories

### **Pacific Section Activity**

1996-Present PS-AAPG Newsletter Editor

1999-2000 Membership Directory Editor

2000 PS-AAPG Convention Committee

2001 PS-AAPG Convention Committee

Author of five papers presented at PS-AAPG Conventions

### **Memberships**

Pacific Section AAPG

San Joaquin Geological Society

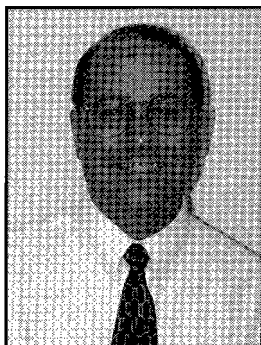
Society of Professional Well Log Analysts

Society of Petroleum Engineers

Society of Core Analysts

1993-94 Treasurer San Joaquin Geological Society

1994-95 Secretary San Joaquin Geological Society



## Scott Hector

**Geologist, Gary Drilling Company**

### **Education**

U.C. Davis, B.S., Geology, 1972

U.C. Davis, M.S., Geology, 1976

### **Employment**

1974-1977 Texaco, Inc., Los Angeles, California

1977-1978 Carlsberg Petroleum, Los Angeles

1978-1979 Great Basins, Los Angeles

1979-1981 Champlin Petroleum, Denver, Colorado

1981-1987 MCOR (McCulloch), Los Angeles/Houston

1987-1989 Consultant, Yuba City, California

1989-1994 North Valley, Woodland, California

1994-2000 Gary Drilling Company, Davis, California

### **Pacific Section Activity**

1992 PS-AAPG Convention, Sacramento: Managed Martin van Couvering Awards; Co-chair, Oral Presentations

Author of three papers and gave two orally.

1995 Convention: 1 oral presentation

1999 Convention: 2 oral presentations

### **Memberships**

Pacific Section AAPG

Sacramento Petroleum Association (SPA)

1997 Vice President, SPA

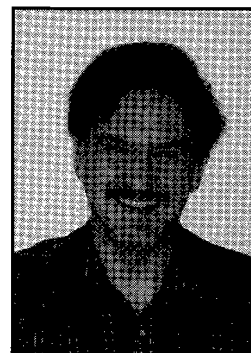
1998-2000 President, SPA

### **Publications**

Approximately one dozen including one article for the Pacific section Newsletter on the Bixler Gas Field

### **Awards**

"Well of the Year", West Coast USA, 1993, Hart Publications



# Candidates for PS-AAPG Vice-President

## Cynthia Huggins

**Geologist, Texaco Exploration and Production, Inc.**

### **Education**

California State University, Bakersfield, B.S., Geology, 1985

### **Employment**

1983-1986 Geologist, Getty Oil Company

1986-Present Geologist, Texaco Exploration and Production, Inc., currently assigned to the Kern River Reservoir Department.

### **Pacific Section Activity**

1998-1999 Secretary, Pacific Section AAPG

### **Memberships**

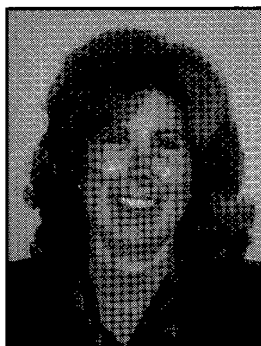
National AAPG

Pacific Section AAPG

San Joaquin Geological Society

Society of Professional Well Log Analysts

1999-2000 Secretary San Joaquin Geological Society



## Alan Langen

**Reservoir Management Geoscientist, AERA Energy, LLC**

### **Education**

California State University, Fresno, B.S. and M.S., Geology

### **Employment**

1980-1991 Production Geologist in Denver for Mobil working in the Los Angeles and San Joaquin Basins.

1986-1991 Explorationist for Mobil in Oklahoma City, Anadarko, Arkoma and other Mid-Continent Basins.

1991-Present Reservoir Management Geoscientist, Mobil and AERA Energy, LLC, Bakersfield, CA., Midway Sunset, Belridge, Cymric, Mt. Poso and Kern River Fields.

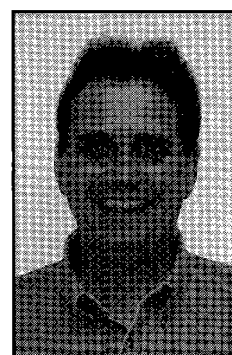
### **Publications**

LANGEN, ROBERT A., 1999, Kern River Field: Integration of 3-D Property Models, 2-D Maps and Flow Unit Volumetric Calculations (abs.): AAPG Bulletin, v. 83/4, p. 693.

### **Memberships**

National AAPG

Pacific Section AAPG



---

## **EXTENDED-REACH OFFSHORE DRILLING SETS WORLD RECORD OFF SANTA BARBARA**

By: Bill Rintoul

A record extended-reach well in one offshore field and kelp restoration at another in Santa Barbara waters have made for a busy year for Michelle Pasini, energy specialist with Santa Barbara County's Energy Division.

Exxon has begun producing the Sacate Field from Platform Heritage using extended-reach drilling technology. The first well, called Sacate #1, was drilled to a total depth of 21,720 feet with a vertical depth of 6,083 feet and a lateral reach of 18,688 feet, she said. This sets a

record for an extended-reach well in offshore U.S. waters and a world record for an extended-reach well in water depths greater than 700 feet.

Exxon's new extended-reach well began producing in late September. The Sacate Field has estimated recoverable reserves of 50 million oil-equivalent barrels. Sacate #1 tested at an initial rate of more than 9,000 barrels of oil per day, Pasini said.

"To effectively manage the reservoir, the well is currently being produced at approximately 2,500 barrels per day. Additional wells from Platform Heritage are planned to optimally develop the Sacate reservoir," she said.



# Candidates for PS-AAPG Secretary

## George Stewart

**Reservoir Surveillance Geologist,  
Aera Energy LLC, Bakersfield,  
CA**

### **Education:**

B.S., Earth Science, 1978, California  
State University, Bakersfield  
M.S., Geological Sciences, 1988,  
University Southern California, Los Angeles

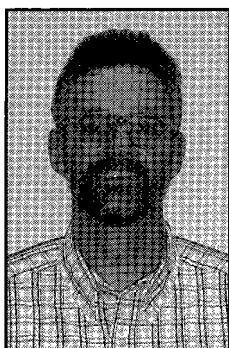
### **Employment:**

1999-present: Reservoir Surveillance Geologist, Aera  
Energy LLC, Bakersfield, CA  
1988-1998: Senior Geologist, ARCO Western Energy,  
Bakersfield, CA  
1984-1985: Geologist, Santa Fe Geothermal, Bakers-  
field, CA  
1978-1984: Geologist, Occidental Geothermal, Bakers-  
field, CA

### **Professional Activities:**

American Association of Petroleum Geologist (member  
1978)  
Geological Society of America (member 1984)  
American Geophysical Union (member 1985)  
Certified Petroleum Geologist (AAPG 1999)  
California Registered Geologist

Secretary San Joaquin Geological Society 1996-97



## Nancy Wildman

**Sr. Geologist, Chevron USA  
Bakersfield, CA**

### **Education**

Earlham College, BA Geology, 1977  
Colorado State Univ., MS Geology  
1981

### **Employment**

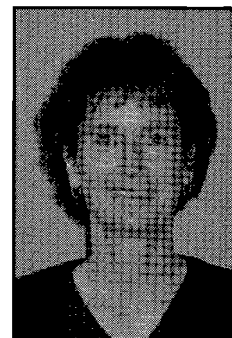
1981 Geologist, Kemmerer Coal Company, Kemmerer,  
WY  
1982-1983 Geologist, Pittsburg & Midway Coal Mining  
Co., Denver, CO  
1983-1989 Mine Geologist, Pittsburg & Midway Coal  
Mining Co., McKinley Mine, Gallup, NM  
1989-1996 Sr. Geologist, Pittsburg & Midway Coal  
Mining Co., Denver, CO and Raton, NM  
1996-present Sr. Geologist, Chevron USA, Bakersfield,  
CA

### **Pacific Section Activity**

Member since 1996

### **Memberships**

AAPG – member since 1996  
San Joaquin Geological Society - member  
AIPG – member since 1987, Certified Professional  
Geological Scientist #7350



WELL INFORMATION AND INSTRUMENTATION

**EPOCH**

LES COLLINS

WEST COAST DIVISION MANAGER

CALIFORNIA REGISTERED GEOLOGIST #3907 lecollins@nabors.com E-MAIL

3919 ROSEDALE HIGHWAY  
BAKERSFIELD, CALIFORNIA 93308

661-328-1595

661-635-1452 DIRECT

661-328-1623 FAX

661-838-7978 CELLULAR

**Petroleum  
Data  
Research**



Well History Analysis  
Production Data

Wellbore Schematics  
Data Management

**Janet Schroeder  
Consultant**

13264 Elmrock Avenue  
Moorpark, CA 93021  
Phone/Fax (805) 523-3097

## **NEW MAPS:**

In 1998-1999, the Dibblee Geological Foundation published 5 new geologic maps by Tom Dibblee. Each map is composed of 2 to 4 quadrangles as listed below:

**DF-67 Mt. Wilson/Azusa (1998, 2 quads)**

**DF-68 Santa Rosa Island (1998, 4 quads) coauthored with John J. Woolley**

**DF-69 El Monte/Baldwin Park (1999, 2 quads)**

**DF-70 Palos Verdes Peninsula (1999, 3 quads)**

**DF-71 Monterey Peninsula (1999, 16-quad special map, 1:62500 scale)**

The maps are still only \$12 each (\$15 rolled) prepaid by check or money order, which includes shipping and handling. Please send your order to the Dibblee Geological Foundation Sales Contractor Mr. E.R. Jim Blakley, 958 Isleta Ave., Santa Barbara, CA 93109 or phone/fax him at (805) 962-9730.

## **“Geology of the Midway-Sunset Oil Field and Adjacent Temblor Range”**

**Pacific Section AAPG Guidebook #75 is a 425 page, comprehensive look at the largest producing oilfield in the lower 49 states. It contains color images of maps, cross sections, logs and core photographs. A large (1:48,000) surface geology map is included. Midway-Sunset is one of several billion barrel oil fields located around Bakersfield, California, U.S.A. Steam injection and horizontal drilling are a big part of the activity at Midway-Sunset. Projects currently underway in this field could easily push its production over 200,000 bopd.**

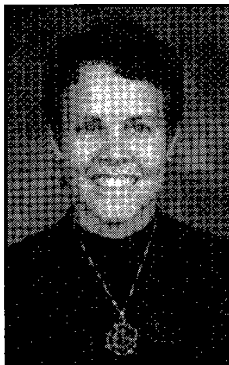
**This field guidebook was originally published in 1996 and reprinted in 1997. This third reprinting in 1999 includes only 60 copies available for public sale. If interested in obtaining a copy please send a check in the amount of \$205.00 to:**

**Pacific Section AAPG  
Publications  
P.O. Box 1072  
Bakersfield, CA 93302  
For additional information contact:  
Larry Knauer  
(661) 392-2471 (w) (661) 391-4303 (f)  
knauelc@texaco.com**

## Pacific Section AAPG Announces National Award Winner

### Earth Science Teacher of the Year Peggy Lubchenco

In April 2000, Peggy Lubchenco will be accepting the AAPG National K-12 Earth Science Teacher of the Year Award in New Orleans at the National AAPG Convention, and will speak about her work in earth science education.



In November 1999, Ms. Lubchenco won the AAPG National K-12 Earth Science Teacher of the Year Award. Competing among teachers from all over the country, Peggy was the nominee from the Pacific Section of the AAPG. The Section represents local geological societies from Alaska, the Pacific Northwest, and California; the Coast Geological Society is one of these seven local societies. She holds a BA from Colorado College in Environmental Science and an MS from Brown University in Biology. In addition to working as a research biologist for more than six years, a computer technician at Stanford for a year, and as the science editor for *Intellimation* in Goleta, California for a year, Peggy has dedicated over 15 years to teaching secondary science in both Massachusetts and California.

The Coast Geological Society named Peggy Lubchenco its first annual Elementary and Junior High Earth Science Teacher of the Year in May 1999. The Society chose Lubchenco because she developed and teaches an excellent earth science program at La Colina Junior High, located in Santa Barbara, California. Prior to her arrival at La Colina in 1995, science was not available for seventh graders in Santa Barbara public schools. Lubchenco was pivotal in making a year of seventh grade Earth Science education a requirement in the Santa Barbara School System. She was a driving force in developing the curriculum, setting the standards, and formulating district assessment of the program. In her classroom, Lubchenco emphasizes "hands on" experiences. She estab-

lished a weather station and a soil profile area at her school. She takes her seventh grade students out for field trips. She also holds earth science teaching workshops for other teachers in Santa Barbara.

Local societies of the Pacific Section AAPG hold Teacher of the Year competitions in the spring of the year. The society nominees then compete for the Sectional award. The national competition is the final level. We encourage all teachers in the earth science arena to apply for these awards. This year's application form is on the homepage or you may email us on our website at [psaapg.org](http://psaapg.org).

### REPRINTED MAPS:

The Dibblee Geological Foundation has just reprinted 6 important and popular geologic maps that were out of print. All are in the Santa Monica Mountains region and are as follows, from west to east:

**DF-28 Camarillo/Newbury Park**

**DF-29 Point Mugu/Triunfo Pass**

**DF-39 Simi**

**DF-37 Calabasas**

**DF-35 Topanga/Canoga Park S1/2**

**DF-31 Beverly Hills/Van Nuys S1/2**

The maps are still only \$12 each (\$15 rolled) prepaid by check or money order, which includes shipping and handling. Please send your order to the Dibblee Geological Foundation Sales Contractor Mr. E.R. Jim Blakley, 958 Isleta Ave., Santa Barbara, CA 93109 or phone/fax him at (805) 962-9730.

# CSUB GeoTechnology Center – SPRING Quarter Courses

## I. INTRODUCTION TO PRIZM

**Who Should Attend?** Petroleum and Groundwater Exploration and development geologists with little or no experience with the GeoGraphix Software Package.

**When is it?** Four sessions (April 3, 5, 10 and 12) for four hours each (6-10 PM).

**Where is it?** CSU Bakersfield, Science II Room 278 (PC lab)

**Course Description:** Introduction to Prizm 3.2. This course introduces the student to the fundamentals of GeoGraphix's PRIZM software which is used to interpret well log data on a PC. **Topics will include:** creating a project, loading and editing well data, creating and using templates, cross-plotting and core data, equations and log analysis, creating and editing custom log displays and reports.

The class will also include a brief introduction to Prizm 4.0. Example data sets used in the course will cover both a petroleum industry dataset from Elk Hills and a groundwater dataset from the San Joaquin Valley.

**Instructor:**

Randy Metz, Pacific Geotechnical Associates, Inc.

**Cost and Registration Deadline:** \$280 – March 27, 2000. **Max Enrollment:** 12

**Expected for May:** SeisVision (GeoGraphix) Fundamentals

### *Registration Information*

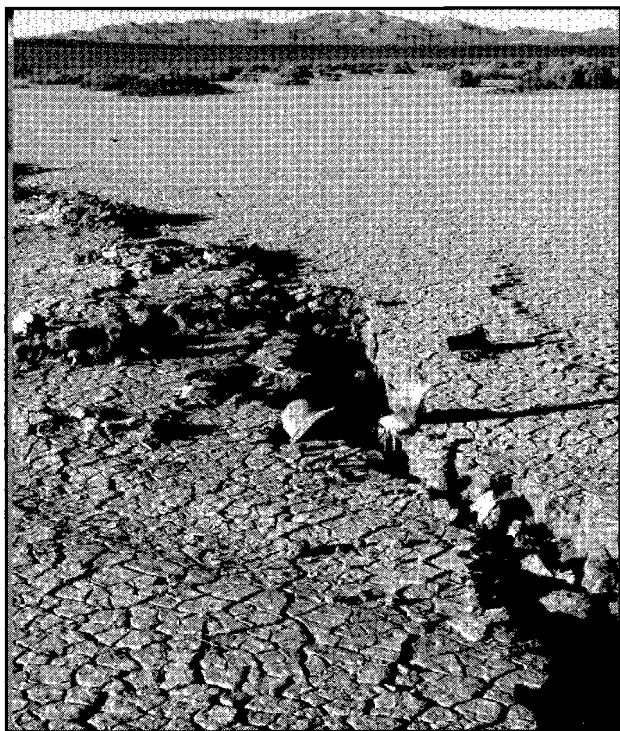
**Without University Credit:** Send contact information (phone # and/or email address) and a check for the entire course fee to *Dr. Jan Gillespie, Department of Geology, California State University, 9001 Stockdale Highway, Bakersfield, CA 93311.*

Make Check payable to: *CSUB Foundation – GTTC*

**With University Credit:** Same as above but also contact Rob Negrini (see below)  
*for further information contact:*

**Jan Gillespie, Center Director:** 664-3040 or jan@cs.csubak.edu

**Rob Negrini, Chair of Physics and Geology:** 664-2185 or rnegrini@cs.csubak.edu



*Photo of Hector Mine Quake Explorer in Lavic Lake Fault*

*Photo taken the day after the earthquake. Fault gobbles up 6' 4" BLM Geologist Dr. Gregg Wilkerson. Photo looking N-NW, with Cady Mtns in background.*

*The BLM runs a series of field trips throughout the year. For more information contact Dr. Gregg Wilkerson at (661) 391-6177.*

**THEY SAID IT COULD NEVER HAPPEN.....**

**Millennium Meeting in Long Beach, California**

**June 18-23, 2000**

**Westin Hotel, Long Beach, California**

Pacific Section, American Association of Petroleum Geologists

&

Western Region, Society of Petroleum Engineers

- The annual meetings of these two groups will be merged into one joint meeting.
- The technical program is planned to accommodate the interests of both groups.
- Outstanding speakers and activities are on the docket.
- The exhibits and presentation rooms are planned to provide optimum interaction of attendees.
- The accommodations and the surrounding revitalized coastal community provide a perfect setting.
- Bring the family and enjoy the tourism for which Southern California is famous.

**PSAAPG**

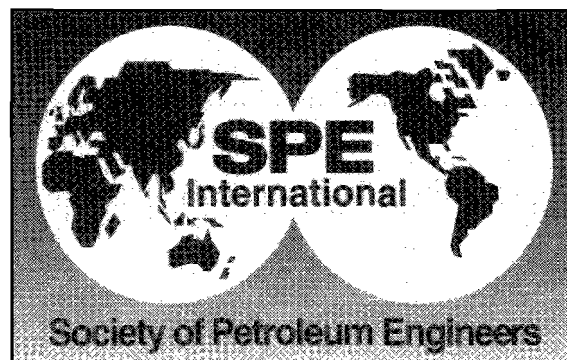
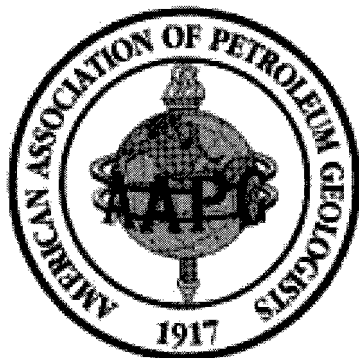
Don Clarke  
Department of Oil Properties  
211 East Ocean Blvd.  
Suite 500  
Long Beach, CA 90802

(562) 570-3915  
doclark@ci.long-beach.ca.us

**SPE**

Glenn Swanson  
Duke Engineering & Services  
12100 Wilshire Blvd.  
Suite 430  
Los Angeles, CA 90025

(310) 979-4777 EXT. 11  
gswanson@duke-energy.com



# NEWS FROM THE AFFILIATED GEOLOGICAL SOCIETIES

## Alaska

April 13th will feature Mark Cooper, AAPG Distinguished Lecturer.

May 18th will see Romeo Flores of the USGS, Denver, speaking on Coal Bed Methane.

Fall meetings are held the third Thursday of every month. Meetings are at the Anchorage Hilton, 11:30-1:00

Call Agatha Rutka at Arco with reservations for the meetings at (907) 263-4414 or e-mail to: [arutka@mail.arco.com](mailto:arutka@mail.arco.com).

*Alaska Geological Society  
P.O. Box 101288  
Anchorage, AK 99510  
Contact: Mark Myers  
(907) 263-4205  
<http://www.seclabs.com/ags>*

California Street Exit, West (Left) on Thompson Blvd, North (Right) on Palm.

SOUTHBOUND Highway 101 – Take Ventura Ave. Exit, East (Right) on Thompson Blvd., North (Left) on Palm.

Social Hour – 6:00 p.m.  
Dinner – 7:00 p.m.  
\$12 – With Reservation  
\$17 – Without Reservation  
\$ 5 – For Students and K-12 Teachers

*Coastal Geological Society  
P.O. Box 3055  
Ventura, CA 93006  
Contact: Steve Richardson  
(805) 648-4996  
[www.coastgeologicalsociety.org](http://www.coastgeologicalsociety.org)*

The Meeting Has Moved Again!!!!!!

The Los Angeles Basin Geologic Society will meet at Long Beach City College, Pacific Coast Campus in the Student Center. Take Orange Avenue south from the San Diego Freeway (405). Park in Lot 2. Parking will be free. The Student Center is just south of the lot, across the grass..

*Los Angeles Geological Society  
c/o Don Clarke  
Dept. of Oil Properties  
211 E. Ocean Blvd. Ste. 500  
Long Beach, CA 90802  
(562) 570-3915*

## Coast

April 18th sees Dave Jackson, UCLA, speaking on: "Faults, Tectonics, and Earthquakes".

May 16th will feature Dave Hill of the USGS talking on: "Long Valley, Saga of a Restless Caldera".

Reservations:

By Web Browser (On-Line)

By E-mail, Attn, Lorien Bareng at [lorandshi@aol.com](mailto:lorandshi@aol.com)

(Please RVSP via E-mail if possible)

By phone, Sinclair Well Products and Services, Attn. Lance Lawhon at (805) 653-7975

By FAX , at (805) 653-7452

**AMERICAN LEGION HALL  
83 S. PALM STREET, VENTURA, CA**

NORTHBOUND Highway 101 – Take

## Los Angeles

Upcoming meetings:

April 13, 2000 LABGS, Dr. Ivan Colburn (tentative). CSULA. , "Three Channels, One River" deals with the role of antecedent rivers in shaping the present southern California coast line with emphasis on the Orange County coast

May 18, 2000 LABGS, Dr. Luis Chiappe (tentative) LACM "Recent dinosaur embryo finds in Argentina"

May 11, 2000 Brian Wernicke will speak at the Branner Club

## Northern California

Upcoming talk:

Special Chevron Overseas Petroleum (COPI)-Hosted Event

Saturday, April 1, 10:00 a.m.-12:00 noon, COPI (Chevron) Virtual Reality Visualization Center, San Ramon, CA

Geology and 3-D Demonstration of Tengiz Oil Field and Absheron Prospect, Caspian Sea (*see announcement*) Robert Kieckhefer, COPI, San Ramon, CA and Frank Picha, Consultant, Walnut Creek, CA

Wednesday, April 26, Masonic Auditorium, Orinda, CA

Ken Caldiera, Program for Climate Model Diagnosis and Intercomparison, Lawrence Livermore National Labora-

tory "Carbon Cycles and Paleoclimate Reconstructions"

Wednesday, May 24, Masonic Auditorium, Orinda, CA *David Lawler*, Far West Geoscience Foundation, Berkeley, and Bureau of Land Management, Sacramento  
"Paleofluvial Systems and Placer Gold Deposits in the Sierra Nevada Region, California--Sedimentation and Mercury Impacts Associated with Historic Mining Methods"

All talks will be held on the last Wednesday of each month at the Orinda Masonic Center, 9 Altarinda Road, Orinda, CA. at 6:30 PM Social, 7:00 PM talk. Cost is \$5.00

**Northern California Geological Society**  
9 Bramblewood Court  
Danville, CA 94506-1130  
Contact: Dan Day  
(510) 294-7530

## Northwest

April 14th will see George Taylor-- Climatologist, State of Oregon speak on "Climate predictions: Is It Too Warm To Tar And Feather?"

May 12th will feature a talk yet to be announced.

For meeting reservations please call Shelly Thomas at (503) 848-2947 or Treck Cardwell at (503) 226-4211 ext. 4689.

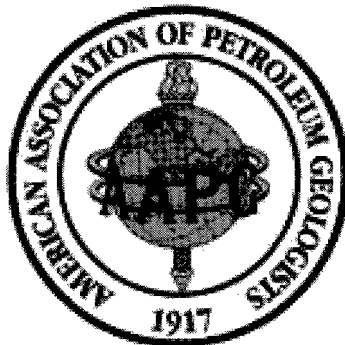
**Northwest Energy Association**  
P.O. Box 6679  
Portland, OR 97228-6679  
Contact: William Rodger, Jr.  
(503) 224-3380  
[www.nwenergyassociation.org](http://www.nwenergyassociation.org)

## Sacramento

March 16th saw Tom Hampton of Holditch Reservoir Technologies (Schlumberger's Petroleum Engineering and Engineering Consulting Group) speak on "Latest Technologies in Predicting Gas/Oil Production Rates".

Noon luncheon meetings are held at the HUNGRY HUNTER RESTAURANT, 450 Bercut Drive, Sacramento.

**Sacramento Petroleum Association**  
P.O. Box 254443  
Sacramento, CA 95865-4443  
Contact: Scott Hector  
(916) 758-5951



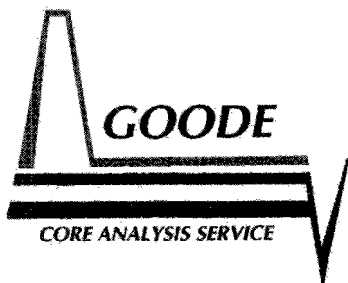
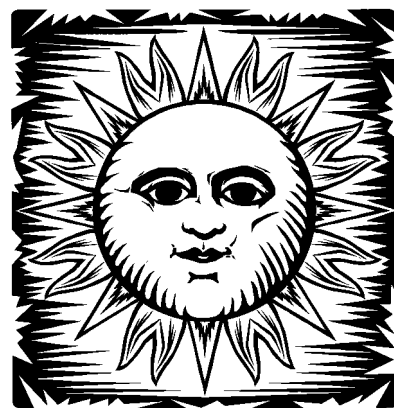
## San Joaquin

The April 11th dinner meeting will feature Rick Stanley of the USGS, speaking on "Oil in Silicon Valley"

Cost is \$15 with reservations, \$18 without. Please contact Cynthia Huggins, (661) 392-2278, or e-mail to: [huggica@texaco.com](mailto:huggica@texaco.com)

Dinner Meetings are held the second Tuesday of each month (except summer months) at the American Legion Hall, 2020 H street, Bakersfield. The social hour starts at 6:00 p.m., dinner is served at 7:00 p.m. and the talk begins at 8:00.

**San Joaquin Geological Society**  
P.O. Box 1056  
Bakersfield, CA 93302  
Contact: Mark Wilson  
(661) 392-3047  
<http://www.sjgs.com>



**Bryan A. Bell**

(805) 322-5540  
FAX 322-5576  
24 Hour Service

1400 Easton Drive, Suite 111 • Bakersfield, CA 93309

*Joseph F. Elliott*

**Geophysical Consultant**

**Exploration Management**

International/domestic  
Interpretations  
synthetics  
modeling

Office: (949) 240-1505

26801 Lariat Circle  
San Juan Capistrano, CA 92675



# **CALL FOR PROPOSALS FOR TECHNICAL SYMPOSIA, FIELD TRIPS, SHORT COURSES, AND WORKSHOPS**

**JOINT MEETING - FIRST-TIME EVER!**

<b>Cordilleran Section- Geological Society of America</b>	<b>Pacific Section- American Association of Petroleum Geologists</b>
---	--

**When:** Monday - Wednesday, April 9-11, 2001

**Where:** Sheraton Universal Hotel, Universal City,  
North Hollywood

**Hosts:** Department of Geological Sciences,  
California State University, Northridge  
*and*  
San Joaquin Geological Society

**Theme:** "Forward to the Past" - Recent advances in research, technology,  
exploration, production, and teaching.

<b>Peter W. Weigand</b> Department of Geological Sciences California State University Northridge, CA 91330-8266 <a href="mailto:Peter.Weigand@CSUN.edu">Peter.Weigand@CSUN.edu</a> 818-677-2564	<b>J. E. (Jeff) Shellebarger</b> Chevron USA 5001 California Avenue Bakersfield, CA 93302 <a href="mailto:JSHE@Chevron.com">JSHE@Chevron.com</a> 661-395-6413
--	--

## LONGTIME OILMAN PASSES ON

Longtime oilman Kenneth Hume Hunter Jr., who as an independent producer did extensive drilling in Kern County, died of Leukemia at his home in Montecito, near Santa Barbara, on Jan. 30.

Hunter's father, who was a petroleum geologist and engineer, exposed Kenneth early in his life to the romance and adventure of the oil business. And though recruited by General Motors upon graduation from USC, he decided his best opportunities lay in the oil fields.

Hunter's first job was as a roughneck on a Shell Oil Company drilling rig in 1948 and by 1949 had worked his way up to a "derrick-man."

He then worked independently as a "oil lease hound" and after competing successfully against Union Oil Company in obtaining leases from the Mandan Indians in North Dakota, he was offered a job with Union in 1951. He later rose to the position of Union's California Land Manager by 1954. In 1955, he embarked on his long and successful career as an independent oil producer.

He was involved in the drilling of 204 wells amassing a total of 187 miles of footage drilled, more than a few of them dry holes. But he rarely let failure hold him back and never dwelled on what might have been. He operated most wells in his own name and not as a corporation. Probably few other modern oilmen in California have such a long and continuously active career constantly "risking it all."

Coming full circle, at the time of his death, Hunter was drilling a well one mile to the west of the first well he drilled back in 1955. The later well was Shaw No. 4, an extension well that proved to be productive. Total depth was 12,710 feet.

Donations in lieu of flowers should be sent to R.M. Pyles Boys Camp located at 27211 Henry Mayo Drive, Valencia, CA 91355.

# Reservoir Characterization

- Sidewall Optimization Technology
- Conventional Core Analysis
- Advanced Rock Properties
- Reservoir Information Browser
- NMR Log Calibration



<b>Bakersfield TEAM</b>	<b>Anchorage TEAM</b>
3430 Unicorn Road	600 W. 58th Ave., Unit D
Bakersfield, CA 93308	Anchorage, AK 99518
(805) 392-8600	(907) 349-3541



*Deadline for the next  
issue is:  
April 10, 2000*

*Check out the Pacific  
Section Web Site at:  
<http://www.psaapg.org>*

**NEWSLETTER** of the Pacific Section - American Association of Petroleum Geologists is published bi-monthly by the Pacific Section. Material for publication, requests for previous copies, and communications regarding advertising costs should be addressed to the editor -

**ALLEN BRITTON, Core Laboratories, Inc.,**  
3430 Unicorn Road, Bakersfield, CA 93308.  
E-mail: [corebak@ix.netcom.com](mailto:corebak@ix.netcom.com)

CHANGE OF ADDRESS, subscription and membership inquiries should be directed to:  
**MEMBERSHIP CHAIRMAN, PACIFIC SECTION AAPG, P.O. Box 1072, Bakersfield, CA 93302.**

TO ORDER PUBLICATIONS OF THE PACIFIC SECTION AAPG write to: **PUBLICATIONS COMM.: PACIFIC SECTION AAPG, P.O. Box 1072, Bakersfield, CA 93302.**

**PACIFIC SECTION AMERICAN ASSOCIATION  
OF PETROLEUM GEOLOGISTS  
OFFICERS 1999-2000**

President	(661) 392-2464	<b>TERRY THOMPSON</b> <a href="mailto:thomptw2@texaco.com">thomptw2@texaco.com</a>
President Elect	(661) 326-5506	<b>KAY PITTS</b> <a href="mailto:Klpitts@aeraenergy.com">Klpitts@aeraenergy.com</a>
Vice President	(805) 494-2374	<b>DALE KUNATOMI</b> <a href="mailto:oildale@acninc.net">oildale@acninc.net</a>
Secretary	(661) 323-6828	<b>FRANK CRESSY</b> <a href="mailto:fcressy@prodigy.net">fcressy@prodigy.net</a>
Treasurer	(805) 389-7710	<b>HAROLD SYMS</b> <a href="mailto:harold.syms@mms.gov">harold.syms@mms.gov</a>
Past President	(510) 234-6214	<b>MEL ERSKINE</b> <a href="mailto:merskine@ix.netcom.com">merskine@ix.netcom.com</a>

**Newsletter Staff**

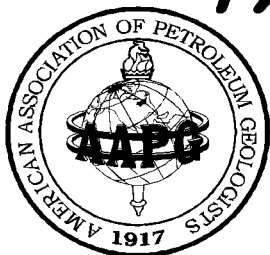
Editor	(661) 392-8600	<b>ALLEN BRITTON</b> <a href="mailto:corebak@ix.netcom.com">corebak@ix.netcom.com</a>
Historical	(661) 324-0379	<b>BILL RINTOUL</b>
Geological	(661) 323-6828	<b>FRANK CRESSY</b>

**Associate Editors**

Alaska Geological Society	(907) 564-5677	<b>GARY PELKA</b> <a href="mailto:pelkagj@bp.com">pelkagj@bp.com</a>
Coast Geological Society	(805) 648-4996	<b>STEVE RICHARDSON</b> <a href="mailto:richconinc@aol.com">richconinc@aol.com</a>
Los Angeles Basin Geol. Soc.	(562) 570-3915	<b>DON CLARKE</b> <a href="mailto:doclark@ci.long-beach.ca.us">doclark@ci.long-beach.ca.us</a>
Northern California Geologic Society	(510) 284-5480	<b>DONALD LEWIS</b> <a href="mailto:donlew@worldnet.att.net">donlew@worldnet.att.net</a>
Northwest Energy Association	(503) 226-2411 ext.4689	<b>BOB BURNHAM</b> <a href="mailto:rhb@exchange.gasco.com">rhb@exchange.gasco.com</a>
Sacramento Petroleum Assoc.	(916) 758-5951	<b>SCOTT HECTOR</b>
San Joaquin Geological Society	(661) 392-3047	<b>MARK WILSON</b> <a href="mailto:malw@chevron.com">malw@chevron.com</a>

**NEWSLETTER**  
**Pacific Section A.A.P.G.**  
**Post Office Box 1072**  
**Bakersfield, CA 93302**

**BULK RATE**  
**U.S. POSTAGE**  
**PAID**  
**BAKERSFIELD, CA**  
**PERMIT NO. 1163**



# PACIFIC PETROLEUM GEOLOGIST NEWSLETTER

of the Pacific Section

American Association of Petroleum Geologists

September 2000 NO. 4

## A MESSAGE FROM THE PRESIDENT

Thanks to the hard work and dedication of many volunteers, my term as President of the Pacific Section AAPG is ending on a high note. The joint *PS AAPG-WR SPE* convention in Long Beach was every bit as successful as we had hoped. The groundbreaking convention had approximately 1,060 attendees and, judging by the positive comments heard by many, was of great benefit technically, professionally, and socially. I would like to thank all of those geologists and engineers who put in such long hours and hard work on this event. In particular, I would like to acknowledge **General Chairmen, Don Clarke**, PS AAPG, and **Glenn Swanson**, WR SPE, for this success. A great deal of credit also must go to the technical contributors, organized under the banners of the AAPG, SPE, SEPM, SEG, SJWLS, and PTTC. This technical spectrum was matched by the mixed audience generally in attendance at each session. It was a pleasure to see the communication and interchange throughout the meeting. Last but not least, my gratitude goes to the exhibitors for their support and enthusiasm during the convention.

Beyond the success of the Long Beach Convention, the PS AAPG continues to thrive. One major accomplishment this year has been the creation of the **Pacific Section AAPG Foundation**. In January, our application to form a publicly-supported foundation under IRS code 501(c)(3) was accepted. This foundation is designed to conduct the charitable business of the Pacific Section and assure that donations to Pacific Section, including to our special funds, are tax-protected. These funds include the *California Well Sample Repository*, *Dibblee Foundation*, *John Kilkenny Memorial Fund*, and *Martin Van Couvering Fund*. This effort was originated by our Honorary Life Member **Jim Weddle** and driven by PS AAPG Foundation President **Mark Wilson**, with the support of Trustees **Bob Countryman** and **Donna Thompson**. I also would like to thank Trustees **Robert**

**Lindblom** and **Harold Syms** for their involvement in the Foundation.

At this point in the year, as the newly elected officers take over the reins, I would like to acknowledge and thank the 1999-2000 Pacific Section AAPG Executive Committee. **Kay Pitts**, with **Aera Energy**, has been a wonderful and supportive **President Elect**. She now begins her role as **President**. Her energy and organization are truly an inspiration! **Mel Erskine**, consulting geologist from the Northern California Geological Society, finally will finish his three-year commitment and retire as **Past President**. **Camarillo** consulting geologist **Dale Kunitori** has represented the Coast Geological Society well as **Vice President**. **Frank Cressy**, a member of the consulting geologist community in **Bakersfield**, has done a fantastic job in the difficult role as **Secretary**. **Harold Syms**, with the Minerals Management Service, has completed the first of a two-year term as **Treasurer**. His financial record keeping would make a CPA proud. My thanks would be incomplete without mention of **Bob Countryman** (**Membership Chair, Directory Chair, & outgoing AAPG Advisory Council Representative**), **Larry**

(Continued on page 2)

## Inside this issue...

<b>Presidents Message .....</b>	<b>Page 1</b>
<b>New Pacific Section Officers .....</b>	<b>Page 2</b>
<b>Kay Pitts – Rising Star .....</b>	<b>Page 4</b>
<b>SJGS Fall BBQ Info .....</b>	<b>Page 6</b>
<b>Callendar .....</b>	<b>Page 7</b>
<b>Pac Sec Honors and Awards! .....</b>	<b>Pages 8-11</b>
<b>News from the Societies.....</b>	<b>Pages 12-13</b>
<b>Pictures from Long Beach .....</b>	<b>Pages 14-15</b>

(Continued from page 1)

**Knauer (Publications Chair), Allen Britton (Newsletter Editor), Muriel Norton (Finance Chair), Tom Wright (Conventions Chair and general sage), Bob Lindblom (Honors and Awards Chair), Donna Thompson (Legislation & Public Affairs Chair), and Paul Mock (Youth Activities Chair).**

**It has been an honor and a privilege to serve as your President during this transition to a new century. Thank you all for your support. I look forward to continuing my work with this organization in other roles as we move forward.**

***Terry W. Thompson***  
***President, Pacific Section AAPG***

## **Pacific Section AAPG officers for 2000-2001:**

The election results are in. The officers for the 2000-2001 year are:

**Kay Pitts, President**



**Allen Britton, President-Elect**



**Cynthia Huggins, Vice President**



**George Stewart, Secretary**



**Harold Syms, Treasurer**



**Terry Thompson, Past-President**



## **LICENSE NOTIFICATION**

### **REGULATION IN EFFECT**

Following the passage of Senate Bill 2238, all California registered geologists and geophysicists are required to notify their clients that they are licensed by the Board of Registration for Geologists and Geophysicists. The new regulation can be found in California Code of Regulations Title 16, Division 29, Section 3066 and became effective on April 14, 2000. There are three separate license notification procedures detailed by Section 3066: for clients, by parties in responsible charge of geological or geophysical work, and in advertising.

1) License notification may be done by any of the following methods:

- A. Displaying his or her license certificate in a public area of the premises where the licensee provides the licensed service.
- B. Posting a notice in a public area of the premises where the licensee provides the licensed services, in at least 48-point type, which states that the named licensee is licensed by the Board.
- C. Providing a statement to each client, to be signed and dated by the client and retained in the licensee's records, which states that the client understands that the licensee is licensed by the Board.

2) In addition, all parties in responsible charge of geologic and geophysical projects shall:

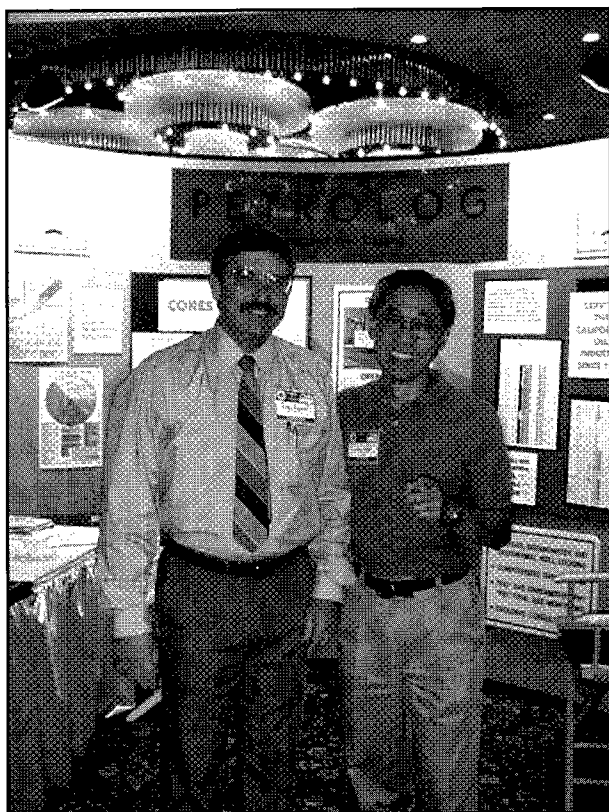
- A. Include a statement that he or she is licensed by the Board on contracts for service, bids documents, and/or responses to requests for proposals or qualifications, where the notice is placed immediately above the signature line for the client in at least 12-point type;
- B. Print his or her license number on the firm's correspondence;
- C. Print his or her license number on the firm's business cards bearing the licensee's name.

3) The licensed principal or partner in a geologic or geophysical consulting firm also shall print his or her license number on all advertising including telephone directory and website.

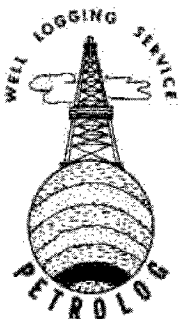
#### **Donna M. Thompson**

Chair, Legislation and Public Affairs Committee

Member, Technical Advisory Committee for the Board of Registration for Geologists and Geophysicists .



*John Williams (l) and Dale Kunitomi at the highly successful SPE Western Region/Pacific Section AAPG Annual Meeting held recently in Long Beach. For more pictures of the meeting turn to pages 14 and 15.*



**PETROLOG**  
PETROLOG, INC.

JOHN T. WILLIAMS  
 R.G., C.P.G.

**Geological Well Logging**

459 DOROTHY AVENUE  
 VENTURA, CA 93003

(800) 750-4590 • (805) 642-2847 • FAX (805) 642-6550

J.M. "BUZZ" DELANO, JR.  
 Consultant

Cell (661) 747-0337  
 Work (661) 325-3987  
 Fax/Home (661) 832-5229  
 Work/Fax (661) 322-2941

### **Delano Petrophysical** Consulting Services

Email: BuzzBake@aol.com  
 5401 Business Park South  
 Suite 214  
 Bakersfield, California 93309

Dipmeter Analysis  
 Tape Conversion Editing  
 Expert Petrophysical Analysis  
 Wellsite Supervision

**California Well Sample  
 Repository  
 California State  
 University, Bakersfield  
 9001 Stockdale Highway  
 Bakersfield, CA 93311-  
 1099**

**California's only facility for permanent storage  
 and public use of cores, sidewall samples, drill  
 cuttings and microfaunal slides**

Cores and cuttings from 5,000 wells  
 Logs and well files for 25,000 wells

**For more information contact:  
 Russ Robinson (curator)  
 (661) 664-2324  
 rrobinson@csubak.edu**

### **Production & Injection Data Well Data Research**

5400 Rosedale Hwy Bakersfield, CA 93308

**All California Oil & Gas Wells  
 Initial Production to Present**

**(661) 324-5441**

E-mail: cselgrath@ix.netcom.com

## AERA'S PITTS RISING STAR IN INDUSTRY

By Joe D. Stevenson

(Re-printed from the Bakersfield Californian)

Kay L Pitts' business card identifies her as a reservoir management geoscientist with Aera Energy LLC, but the 46-year old geologist is much more than that. First of all, she is the 2000-1 president of the Pacific Section of the American Association of Petroleum Geologists.

The section membership totals several thousand geologists from the five Western states bordered by the Pacific Ocean – California, Oregon, Washington, Alaska and Hawaii. About 300 of them are from her home unit – the San Joaquin Geological Society – most based in Kern County. About 100 people show up for monthly society meetings, she said.

Pitts proudly points out that the Pacific Section celebrated its 75<sup>th</sup> anniversary this year, the first section chartered. She was a leader in the first-ever joint section meeting with the Western Region of the Society of Petroleum Engineers. "It went very well," said Pitts, who served as treasurer for the joint convention, staged in Long Beach.

The 2001 section convention will be at Universal City and will include a meeting with the Geological Society of America, which she describes as the academic side of geology.

Pitts' interest in geology was sparked when she was a high school student, and her father, an electrical engineer, took the family to Wisconsin for a work-related summer vacation. Kay was enrolled in a biology class "where it was like learning neat things about nature."

Scientific knowledge runs in her family. Her brother is a computer science engineer and an instructor at University of California at Berkeley.

She was born in Michigan, but her family came to Fullerton when she was 6 months old. She attended Sonora High School in Orange County and then enrolled in geology at California State Fullerton. She graduated with a degree in geology in 1977.

She enrolled in the master's program at University of Southern California. To pay her way through graduate school, she got a job at Disneyland. She said she worked primarily in the wardrobe department but spent some time in Bear Country and other entertainment features. She left Disneyland in 1980 to take a job with Getty Oil in Bakersfield. Her first duty was detail work in mapping the geology of western Kern County.

Pitts said she left Disneyland before completing

her master's courses because she didn't want to be trapped by the higher pay she could earn in the Disney organization. It was not in her chosen field. In 1983, she received her master of science degree in geological science from USC.

In 1981 she married Brian Pitts, a fellow geology student at Cal State Fullerton. By coincidence, Brian was working as a Unocal geologist in Bakersfield when Kay was hired by Getty.

"We figured it would be five years and a transfer but we're still here and loving it," Kay commented.

Brian Pitts is no longer in geology. He is a hazardous materials specialist with Kern County's Environmental Health Services. He also is a member of the Kern County Sheriff's Reserve.

Kay Pitts changed employers with the Texaco acquisition of Getty Oil in 1987. She joined Bechtel Petroleum Operations Inc. at Elk Hills where she was a database supervisor team leader. She was on that job for three years, moving over to her present duty with Aera Energy LLC 2 ½ years ago.

She says she likes her current job, because the company is people oriented and stresses teamwork and community participation.

Pitts' job is basically data management – "making sure the geologists have good data." She stresses the need of keeping communication lines flowing, both to and from the field.

Pitts says being president of the Pacific Section requires a number of meetings. But she also is in regular communication via e-mail with the societies within the section.

Pitts has been a member of the American Association of Petroleum Geologists and its Pacific Section since 1979 and first got into committee work in 1983, co-chairing the section membership directory. In 1985 she was elected secretary of the San Joaquin Geological Society and a year later was finance chair for the section convention. The same year she became a member of the Pacific Section's committee on conventions, a duty she retains. Since then she has gone through Pacific Section chairs – secretary in 1997, vice president in 1998, convention finance chairwoman in 1999 and now president.

She says one goal is to tighten communications with the member societies, noting that it provides various services from publications to lectures to conventions.

A major responsibility of the San Joaquin Society is the sponsorship and support of the California

(Continued on page 5)



(Continued from page 4)

Well Sample Repository at California State Bakersfield. She points out that the collection of oil core samples is vitally important both to the petroleum industry and for teaching purposes. "The core repository is becoming more and more important as companies are downsized and cores are lost in the transition," she said. "DOG (state Department of Oil and Gas) has logs of wells, but that doesn't provide the same information."

She added that the section is working with Los Angeles Basin Society to establish a core repository there.

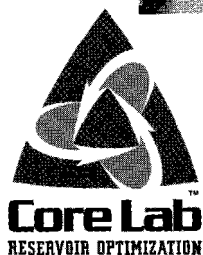
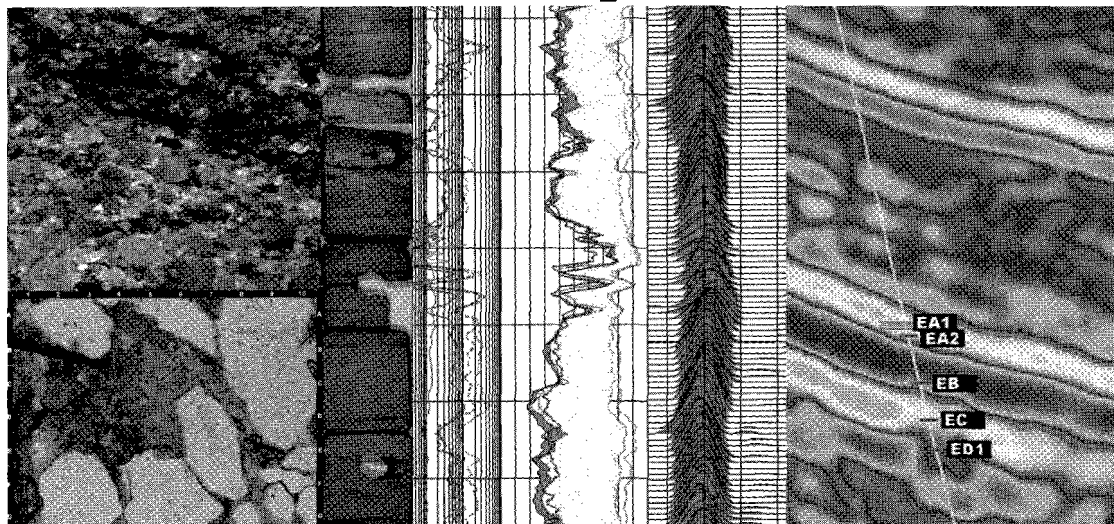
There is a Geoscience Technology Training Center at Cal State Bakersfield, one of six in the world. The American Association of Petroleum Geologists provides the major funding for the program. Pitts said Aera Energy also supports the program. The other centers are in London, Denver, Houston, Dallas and Midland, Texas.

The geological organization is deep into education. The national association's Teacher of the Year recipient for 2000 was a teacher from Ventura, representing the Pacific Section. "We need students who understand science," Pitts said.

Pitts is on the Kern County Museum Oil Advisory Council, which she says is looking for exciting times. The museum has been designated for a \$3.5 million grant through state Proposition 12 to build a state-of-the-art oil museum. She said work should start early next year on a facility that will house exhibits and a 40-seat theater where people will be able to see films telling the story of the petroleum industry. She expects it to be both a tourist attraction and destination for school field trips.

Not all of Pitts' community activity is in oil. She is treasurer and yearbook chairman for the American Association of University Women. She points out that the AAUW supports three scholarships. She is a Leadership Bakersfield Class of 2000 graduate and serves on the Vision 2020 committee which has been brainstorming what Greater Bakersfield will need 20 years from now.

# Reservoir Optimization



**Core Laboratories, Inc.**  
3430 Unicorn Road  
Bakersfield, CA 93308  
(661) 392-8600  
(661) 392-0824  
E-mail: [corebak@ix.netcom.com](mailto:corebak@ix.netcom.com)

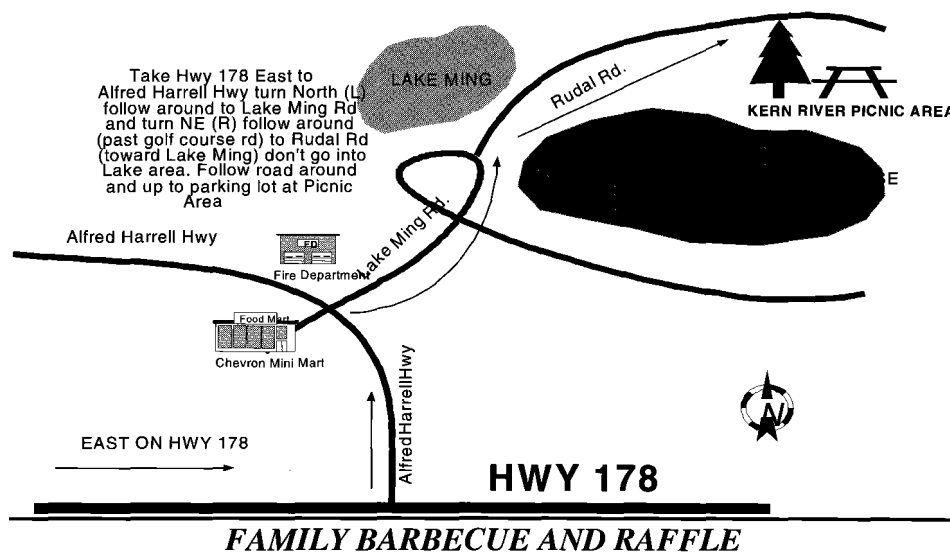
**Core Laboratories, Inc.**  
600 W. 58th Ave., Unit D  
Anchorage, AK 99518  
(907) 349-3541

[www.corelab.com](http://www.corelab.com)

**San Joaquin Geological Society with the  
Society of Exploration Geophysicists and the  
San Joaquin Well Logging Society  
proudly present their  
Annual Fall Barbecue and Golf Scramble**

**WHEN: Friday September 8th, 2000**

**WHERE: Kern River Golf Course and Picnic Area (next to Lake Ming)**



**Place: Kern River Golf Course Picnic Area**

**Cost: RSVP - \$15.00- At the Gate -\$18.00**

**Time: Happy Hour - 5:00 p.m. Dinner - 6:00 p.m.**

**Students: \$7.50 Children - \$5.00**

**For BBQ Reservations Contact: Russ Robinson @ (661) 665-6266 or rrobinson@csu.edu**

***BBQ RSVP - September 5th, 2000***

-----Cut on line and Return-----

***GOLF TOURNAMENT***

**Foursome**

<b><u>Circle Affiliated Society(ies)</u></b>	
1. _____	SJGS / SEG / SJWLS
2. _____	SJGS / SEG / SJWLS
3. _____	SJGS / SEG / SJWLS
4. _____	SJGS / SEG / SJWLS
Contact Phone # _____	
Preferred Starting Time _____	
<b>Total</b> _____	<b>\$</b> _____

**Place: Kern River Golf Course**

**Time: 8:00 a.m. (earliest tee time)**

**Cost: \$40.00 per person includes:  
( green fees, cart, lunch, & prizes )**

**Golf Questions: Jamie Roig, Email: jhroig@aeraenergy.com or (661) 665-5942**

***GOLF RESERVATION DEADLINE: August 30th, 2000***

**Mail Tournament Checks to: SJGS, P.O. Box 1056, Bakersfield, CA 93302**



# September 2000

Sun	Mon	Tue	Wed	Thu	Fri	Sat
					1	2
3	4	5	6	7	8 NW SJGS BBQ	9
10	11	12	13	14	15	16
17	18	19 Coast	20 SPA	21 LABGS AGS	22	23
24	25	26	27 NCGS	28	29	30



# October 2000

Sun	Mon	Tue	Wed	Thu	Fri	Sat
1	2	3	4	5	6 NW	7 NW
8	9	10 SJGS	11	12	13 NW	14
15	16	17 Coast	18 SPA	19 LABGS AGS	20	21
22	23	24	25 NCGS	26	27	28
29	30	31				

# Honors and Awards At The Long Beach Convention

## Martin Van Couvering Award

The Martin Van Couvering Award is presented jointly by the Pacific Section American Association of Petroleum Geologists (AAPG) & Pacific Section Society for Sedimentary Geology (SEPM). The award was created to encourage university student attendance and participation at Pacific Section meetings and field trips. At the request of the Pacific Section, deserving students are selected by faculty at universities local to the annual convention. This year's recipients are:

**Paul Alms** California State University, Fullerton  
**Leah Hahn** California State University, Fullerton  
**Shawn Shapiro** California State University, Northridge  
**Lenore Field** California State University, Northridge  
**Patrick Lam** University of California, Los Angeles  
**Brian Viggiano** University of California, Los Angeles  
**Ronald Morris** California State University, Long Beach  
**Safaa Dergham** California State University, Long Beach  
**Terri Ryland** California State University, Los Angeles  
**Sonjia Leyva** California State University, Los Angeles

## Special Recognition Award

In recognition of outstanding service as the General Chairman of the 1999 Convention in Monterey, California, the Pacific Section AAPG presented a special token of our appreciation to:

**Dr. Gary H. Greene**  
CSU Moss Landing Marine Labs

## H. Victor Church Memorial Award

The H. Victor Church Memorial Award is given by the Pacific Section AAPG in recognition of the best poster presented at a Pacific Section meeting. This award is made at the annual section convention for a poster presented at the previous year's meeting, in this case the 1999 Convention in Monterey, California. The award consists of an engraved plaque and individual certificates for co-authors. The 1999 winners are:

**Caroline M. Isaacs**

**Co-authors: Margaret A. Keller & Kenneth J. Bird**  
"Potentially Hazardous Trace Elements in the Monterey Formation, California"



Terry Thompson (l), President of the Pacific Section AAPG presents the H. Victor Church Memorial Award to John Childs, who accepted on behalf of Caroline Isaacs, Margaret Keller and Kenneth Bird.

WELL INFORMATION AND INSTRUMENTATION

**EPOCH**

LES COLLINS  
 WEST COAST DIVISION MANAGER  
 CALIFORNIA REGISTERED GEOLOGIST #3907

3919 ROSEDALE HIGHWAY  
 BAKERSFIELD, CALIFORNIA 93308  
 661-328-1595  
 661-635-1452 DIRECT  
 661-328-1623 FAX  
 661-838-7978 CELLULAR  
 lcollins@nabors.com E-MAIL

**Petroleum  
 Data  
 Research**



Well History Analysis    Wellbore Schematics  
 Production Data    Data Management

**Janet Schroeder**  
 Consultant

13264 Elmrock Avenue  
 Moorpark, CA 93021  
 Phone/Fax (805) 523-3097

## A. I. Levorsen Memorial Award

*The A. I. Levorsen Memorial Award is given by National AAPG in recognition of the best paper presented at each AAPG section meeting, with particular emphasis on creative thinking toward new ideas in exploration. The award is made at the section meeting for papers presented at the previous year's meeting. The award consists of an engraved plaque. The winner of the 1999 award is:*

**Brian J. Casey**

**"Occidental View of the Elk Hills Field, California"**



*Terry Thompson presents Brian Casey (r) with the A.I. Levorsen Award in recognition of his award winning paper.*

## Distinguished Educator Award

*The Distinguished Educator Award is given by Pacific Section AAPG in recognition of distinguished and outstanding contributions to geological education and counseling of students. This year we are proud to honor:*

**Dr. John D. Cooper**

**Professor of Geology**

**California State University, Fullerton**



*Dr. Pat Abbott (r) accepts the Distinguished Educator Award from Terry Thompson on behalf of Dr. John Cooper.*

Pacific Section AAPG Distinguished Educator Award

**DR. JOHN D. COOPER**

*Professor of Geology*

*California State University, Fullerton*

Pacific Section AAPG has made the right choice in naming Professor John D. Cooper as their Distinguished Educator for 2000. There are no finer teachers than John. His geologic knowledge and passion for learning are his first connection with students, but it is his caring attitude, boundless availability and patience, and positive mentorship that really shape student lives.

John earned his Bachelors degree in geology at the University of Michigan and his Masters and Doctoral degrees at the University of Texas at Austin. We overlapped during part of our graduate studies at UT and we both worked on middle Cretaceous limestones for Keith Young. I was content to do my mapping and carbonate petrology and thus graduate, but John never has done just what is necessary – he always does more. His research work was extended because he did original paleontology over and above the petrologic and depositional environment work required.

John worked for Shell Oil Company but soon found his true calling when he accepted a professorship at California State University, Fullerton. At Fullerton, John has been both teacher and researcher, but more importantly, his enthusiasm for the Earth and his sincere and far-reaching interest in students has helped shape the whole Department of Geological Sciences. I always enjoy visiting CSUF. Whenever I walk into John Cooper's laboratory/classroom, I am entering an inviting museum filled with intriguing specimens; there exudes a serenity within the space and from his students that just makes me feel good. It is a unique feeling that I have not experienced elsewhere, and it is a lingering aura resulting from John's interests and caring attitude.

Teaching means more than just classroom performance. The California State University has a teacher / scholar model for its faculty and no one does it better than John Cooper. In a department with only undergraduate students, John has consistently attracted large sums of external dollars from organizations like the Petroleum Research Fund and NSF to support his research, especially on the Neoproterozoic – Cambrian – Ordovician. John's research is significant in its own right, but to also involve dozens of undergraduate students, over the years, in original research work in conjunction with an international corps of researchers is remarkable. These are heady experiences for undergraduate students and they have had profound, life-shaping effects on many of them.

John's caring and willingness to work spills over from teaching and research into service. For example, for Pacific Section SEPM, John has held every position – Secretary, Vice President, President, and now Treasurer and Publications Manager. We have all seen John at Pacific Section AAPG / SEPM meetings unloading, displaying, and selling publications in his selfless manner. He is always willing to spend his time and energy to help others.

In every realm of life, John Cooper is a dedicated and truly caring teacher. Thank you John, we all benefit from your selfless efforts.

*Pat Abbott, Professor of Geology, San Diego State University*

# Pacific Section AAPG Honorary Life Membership

## Pacific Section AAPG Honorary Life Membership Award

### DR. HANS F. ASHAUER

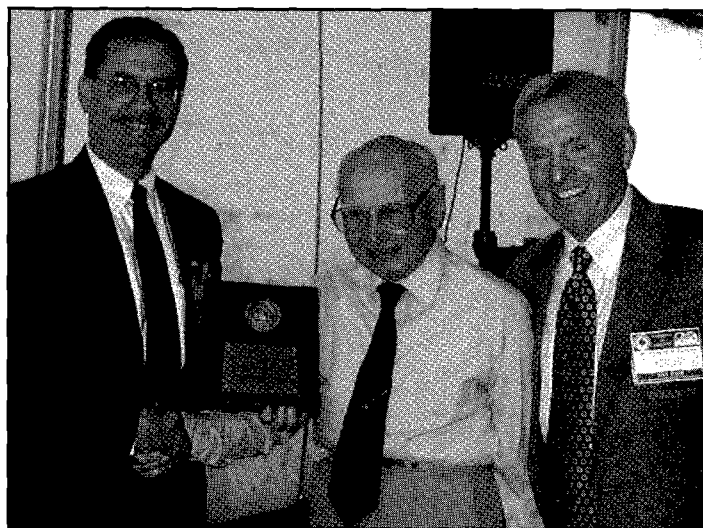
Hans Ashauer became interested in geology while still in high school in his hometown of Bielefeld in northern Germany. Hiking in the local mountains he picked up rocks revealing what appeared to be shell fragments. His science teacher identified them as marine fossils of the Mesozoic Triassic period. Hans' Mesozoic fossils later became part of the Stanford geology department collection at the request of Professor Hubert G. Schenk. Becoming an ardent fossil collector and getting acquainted with local geologists stimulated an interest in the Geological Department of the University of Göttingen and its lead professor Hans Stille, under whom Hans studied beginning in 1929.

Hans' Ph.D. dissertation, selected by Stille as part of his sponsored Mediterranean studies, was "The Eastern Ending of the Pyrenees, Spain - France". It involved about two years of field mapping predominately in the southern Spanish Pyrenees. It was published in 1934 by the Academy of Sciences, Göttingen, together with the dissertation of Hans' college friend J. S. Hollister on the eastern Balearic Islands. Professor H. Stille provided the summarizing analysis "East Pyrenees and Balearics" on the work of his two Ph.D. candidates.

J. S. Hollister, upon completing his Ph.D. in 1934, returned to his home in the United States to work at Stanford University. He and Ralph D. Reed, Texaco Chief Geologist, published their joint "Structural Evolution of Southern California" in 1936 as a follow-up to Reed's earlier "Geology of California". With the shortage of geological opportunities in Germany, H. F. Ashauer joined Reed and Hollister in their ongoing work in California. In 1935 Hollister and Ashauer were employed by Texaco. Their first assignment was to verify whether oil could be found in the Salinas Valley, despite previous negative drilling results. The exploratory core hole drilling they recommended led to Texaco's discovery of the San Ardo oil field. In 1938, Hans' Göttingen girlfriend, Gertraud, made the long ocean journey to marry him while he was stationed in Coalinga, California.

While Hollister moved into foreign work in the Philippines, Hans continued his career in oil exploration for Texaco until his retirement in 1975. As Geologist he worked in Coalinga and Taft, California. He served in Los Angeles as District Geologist, Division Geologist and Exploration Manager for the Western United States and Alaska. In the years prior to his retirement, Hans Ashauer worked for Texaco in Denver as the Chief Geologist for the Western U.S., Alaska and Canada.

### Margo Stuart and Don Six



*(l-r) Terry Thompson presents the Honorary Membership Award to Dr. Hans F. Ashauer as citationist Don Six looks on.*



*Dr. Ashauer and family following the presentation.*

## Pacific Section AAPG Honorary Life Membership Award

### ROBERT L. COUNTRYMAN

I first met Robert L. Countryman in 1970 when he was an undergraduate at California State University, Northridge. He drove a Volkswagen Bug, wore a pith helmet in the field and earned his money by repairing televisions. A serious student, Bob established close relationships with his professors and was president of the geology club. Graduating in 1973 with his BS in geology from CSUN, Bob accepted a job with Tenneco Oil Company. Tenneco sent him out to Death Valley to look for borates where his team successfully extended Tenneco's reserves from 5 years to 25 years and worked themselves out of a job. It was Bob's introduction to the cyclic (and cynical) nature of employment as a geologist.

In 1976, Bob moved back to Los Angeles and UCLA to work on his master's degree, which was based upon some of his work with Tenneco. In one of those odd coincidences of life, he shared an office at UCLA with Larry Knauer and both worked as curators at UCLA's mineral collections. Bob completed his MS in 1977. Then a once in a lifetime opportunity came along when Dr. Louis Slichter offered him a chance to go to Antarctica to gather data and to maintain UCLA's micro-gravimeters. Naturally, he took the job and wintered over Amundsen/Scott Station at the South Pole during 1978. Many interesting stories came out of that year.

In 1979 he accepted a job at Gulf Oil Company as a development geologist in Bakersfield where he has lived ever since. In 1984, Chevron acquired Gulf and transferred Bob to a three-year assignment with Chevron Overseas as stratigrapher for a joint COPI/PDVSA Venezuela Task Force that studied a portion of the Orinoco Tar Belt, an assignment that was one of the highlights of his career. In 1987, he transferred back to Chevron USA to work Development/EOR assignments through 1998. In 1999, Bob left Chevron to join the world of consulting geologists.

During these years, Bob has pursued some serious recreation. This includes fly-fishing, tennis, river rafting and "death marches". It was during one of our "death marches" that I really gained insight to Bob's true inner strength. Bob, Dick Purnell and I walked a grueling 100 miles across the Sierras from West to East in 6 days and spent our last night somewhere between Wallace Creek and Guitar Meadow just west of Mount Whitney. We completed some tough hiking during those days and were tired. A storm came in that last night and covered us with several inches of snow. We woke facing 25 to 30 tough miles to hike out that would take us up and over Mount Whitney in one day. Except now we had to do it through newly fallen snow. It was hard to even find the trail as we hiked through the snow to Trail Crest, the highest pass in the Sierras. There I asked Bob if he was ready to descend to Whitney Portal since it was about noon and we still had more than 10 miles to walk. Without hesitation he said "Don, I'm not going to walk all this way and not make it to the top of Whitney". So, we ascended to the peak. We arrived at Whitney Portal about 8 p.m. absolutely beat. Bob lost a couple of his toenails and we all suffered considerable leg pain. He didn't complain once. The point of this story is that Bob doesn't just get the job done but he

does the extra to make the most of the situation. Bob has applied this same drive to his professional career and to his extraordinary service to the Pacific Section AAPG.

Bob early on became active with the San Joaquin Geologic Society serving as Editor of the SJGS Selected Papers, Volume 7. He has served as SJGS Vice President (1983-1984), as President /President-elect (1984-1986) and remains active with the SJGS today.

Bob has contributed an outstanding amount of service to the Pacific Section of the AAPG. With Chevron's generous support, Bob has been an integral part of all PS-AAPG activities over the last decade. He has served as co-chair or participant on numerous PS-AAPG committees, conventions and other activities. He has served as Secretary (1990-1991), Vice-President (1992-1993) and President/President-elect (1993-1995). Since 1995, he has been the Chair of PSAAPG's Directory and Membership Committees. He has served as a Trustee and Secretary for the PS-AAPG Foundation since its creation in 1998.

Bob has also represented Pacific Section at the National AAPG where he has served in the House of Delegates since 1991 and as the SJGS Delegate Chair since 1992. During this period, he has held the position of vice-chairman of the HOD (1996-1997) and has served on numerous HOD committees including the Adhoc Committee on Membership, the Resolutions Committee (1999-2000), the Credentials Committee (1995-1996), and the HOD Nomination and Election Committee (1993-1994).

Bob also represented the Pacific Section on the AAPG Advisory Council from 1997-2000, where he served on numerous ad-hoc committees for that body. Bob has been a member on the AAPG's Standing Committee on Membership since 1996, serving as vice-chair from 1998-2000 and he will assume the chairmanship on July 1st 2000. He has also participated in several other National AAPG Adhoc committees and numerous other activities. Bob received AAPG's Certificate of Merit in 1995 and 1999.

Bob is a member of GSA and the PS-SEPM as well as being a California Registered Geologist.

You might ask, "With all of this professional activity did Bob do any geology?" The answer is yes. Bob has spent his last 20+ years as a petroleum geologist honing and applying his skills and insights to oilfields in California and Venezuela. Focusing on reservoir characterization of clastic reservoirs and Steam Assisted Thermal Enhanced Oil Recovery, he has worked extensively on multi-functional/discipline teams and is expert with the current technology tools. Much of his effort has been on the development of major SAT/EOR projects in Coalinga, the Midway-Sunset Field and the Orinoco Field of Venezuela and he has published a number of papers on these topics. He also has applied his technical, organizational and team skills to an Equity re-determination of Elk Hills.

His work as a stratigrapher as part of the COPI/PDVSA

*(Continued on page 14)*



# NEWS FROM THE AFFILIATED GEOLOGICAL SOCIETIES

## Alaska

Fall meetings are held the third Thursday of every month. Meetings are at the Anchorage Hilton, 11:30-1:00

Call Agatha Rutka at Arco with reservations for the meetings at (907) 263-4414 or e-mail to: arutka@mail.arco.com.

*Alaska Geological Society*  
P.O. Box 101288  
Anchorage, AK 99510  
Contact: Monte Mabry  
(907) 263-1653  
<http://www.seclabs.com/ags>

## Coast

September 19th will feature Karen Christensen of Venoco, speaking on "South Elwood Field, Santa Barbara Channel: New Insight into Structures, Fractures and Seeps".

The October 17th dinner meeting will have Tom Dibblee speaking on "Recent Mapping Discoveries".

November 11th will see John Crowell speaking on: "Transverse Range".

### Reservations:

By Web Browser (On-Line)

By E-mail, Attn, Lorien Bareng at [lorandshi@aol.com](mailto:lorandshi@aol.com)

(Please RVSP via E-mail if possible)

By phone, Sinclair Well Products and Services, Attn. Lance Lawhon at (805) 653-7975

By FAX, at (805) 653-7452

**AMERICAN LEGION HALL**  
**83 S. PALM STREET, VENTURA, CA**

NORTHBOUND Highway 101 – Take California Street Exit, West (Left) on Thompson Blvd, North (Right) on Palm.

SOUTHBOUND Highway 101 – Take Ventura Ave. Exit, East (Right) on Thompson Blvd., North (Left) on Palm.

Social Hour – 6:00 p.m.  
Dinner – 7:00 p.m.  
\$12 – With Reservation  
\$17 – Without Reservation  
\$ 5 – For Students and K-12 Teachers

*Coastal Geological Society*  
P.O. Box 3055  
Ventura, CA 93006  
Contact: Steve Richardson  
(805) 648-4996  
[www.coastgeologicalsociety.org](http://www.coastgeologicalsociety.org)

## Los Angeles

Upcoming meetings:

Contact:

*Los Angeles Geological Society*  
c/o Don Clarke  
Dept. of Oil Properties  
211 E. Ocean Blvd. Ste. 500  
Long Beach, CA 90802  
(562) 570-3915

## Northern California

*Upcoming talk:*

All talks will be held on the last Wednesday of each month at the Orinda Masonic Center, 9 Altarinda Road, Orinda, CA. at 6:30 PM Social, 7:00 PM talk. Cost is \$5.00

*Northern California Geological Society*  
9 Bramblewood Court  
Danville, CA 94506-1130  
Contact: Dan Day  
(510) 294-7530





## Northwest

On September 8th, Terry Mitchell and Steve Pappjohn will speak on "Convergence of the Natural Gas and Electric Power Industries, The Good, The Bad and The Ugly"

October 13 will feature Rick Durst speaking on "Alternate Fueled Vehicles: Electric, Natural Gas, Fuel Cells".

For meeting reservations please call Shelly Thomas at (503) 848-2947 or Treck Cardwell at (503) 226-4211 ext. 4689.

**Northwest Energy Association**  
P.O. Box 6679  
Portland, OR 97228-6679  
Contact: William Rodger, Jr.  
(503) 224-3380

## Sacramento

The July 19th meeting saw SPA past president Scott Hector speak on "Update of Geological Exploration in the Sacramento Basin".

Noon luncheon meetings are held at the HUNGRY HUNTER RESTAURANT, 450 Bercut Drive, Sacramento.

**Sacramento Petroleum Association**  
P.O. Box 254443  
Sacramento, CA 95865-4443  
Contact: Jack Smith  
(916) 322-1110

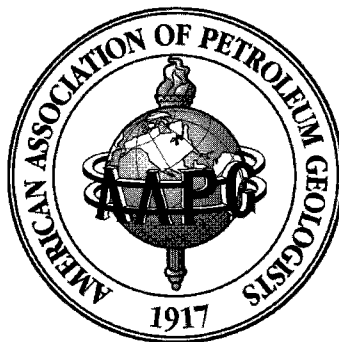
## San Joaquin

The annual Fall Barbecue and Golf Scramble will be held at the Kern River Golf Course and Picnic Area next to Lake Ming on Friday, September 8th, 2000.

Cost is \$15 with reservations, \$18 without. Please contact Russ Robinson at (661) 665-6266 or e-mail him at rrobinson@csu.edu for more information.

Dinner Meetings are held the second Tuesday of each month (except summer months) at the American Legion Hall, 2020 H street, Bakersfield. The social hour starts at 6:00 p.m., dinner is served at 7:00 p.m. and the talk begins at 8:00.

**San Joaquin Geological Society**  
P.O. Box 1056  
Bakersfield, CA 93302  
Contact: Dan Stewart  
(661) 763-2008  
<http://www.sjgs.com>



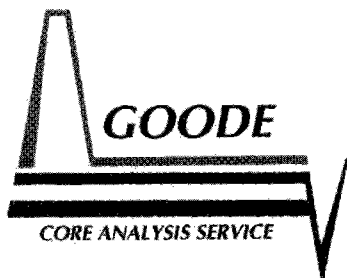
## Northwest Energy Association Hosts 17th Annual Fall Symposium

The Northwest Energy Association present its 17th Annual Fall Symposium October 6 & 7 th at the Hatfield Marine Science Center in Newport Oregon.

Topics of discussion include Landslide Hazard Recognition and Response, Tsunami Hazards on the Northwest Coast, Mitigating Volcanic Hazards in the Pacific Northwest, Airborne Remote Sensing Solutions for Pipeline Management, Earthquake Hazard Quantification for Distributed Systems, Elements of a Natural Hazard Risk Control Program and Cost-Effective Non-structural Seismic Hazard Mitigation.

For information contact Event Solutions, Inc., 1298 Elm Street SW, Albany, Oregon 97321 (541) 928-5055 or register on the internet at:

[www.nwenergyassociation.org/newpage1.htm](http://www.nwenergyassociation.org/newpage1.htm)



**Bryan A. Bell**

(805) 322-5540  
FAX 322-5576  
24 Hour Service

1400 Easton Drive, Suite 111 • Bakersfield, CA 93309

*Joseph F. Elliott*

**Geophysical Consultant**

**Exploration Management**

International/domestic  
Interpretations  
synthetics  
modeling

Office: (949) 240-1505

26801 Lariat Circle  
San Juan Capistrano, CA 92675

*(Continued from page 11)*

Venezuela Task Force not only brought him technical recognition but it brought him to his future wife Luz. His dear wife Luz filled the gap to make Bob complete.

I am proud to serve as citationist for Robert L. Countryman. I can think of no one more deserving of the Pacific Section's highest honor of Lifetime Membership than Bob Countryman.

**Don Clarke**



*(l-r) Terry Thompson, citationist Don Clarke and Bob Countryman with Bob's Honorary Membership Award.*



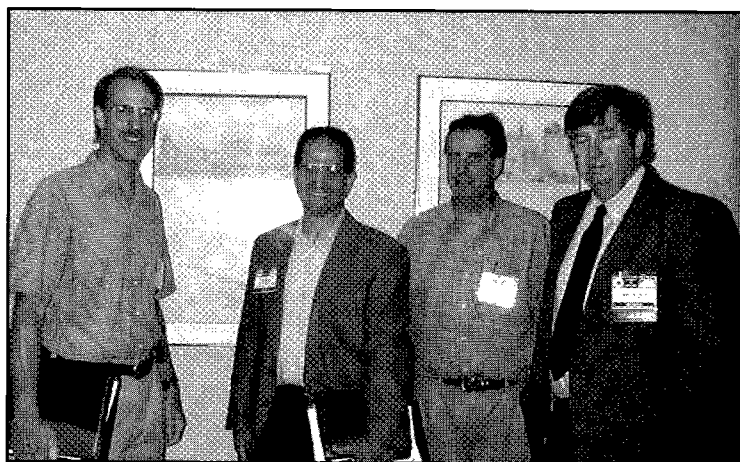
*Luz and Bob Countryman*



*Bob Lindblom and Donna Thompson*

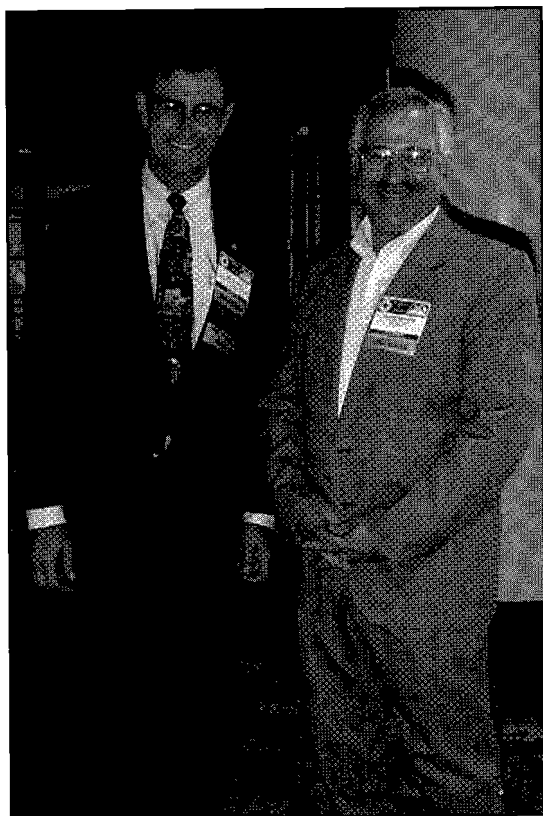


*(l-r) Dave Del Mar, Ralph Pegors and Dale Kunitomi.*

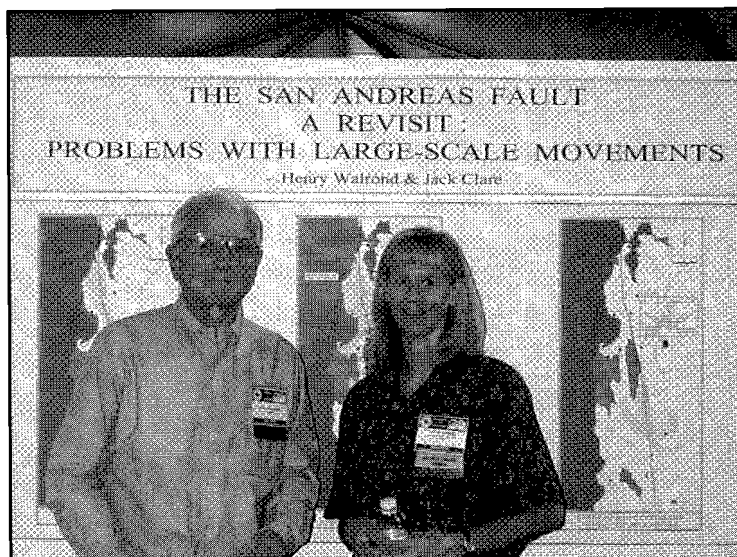


*(l-r) Tom Zeiner, Doug Hess, Al Langen and Mark Milliken.*

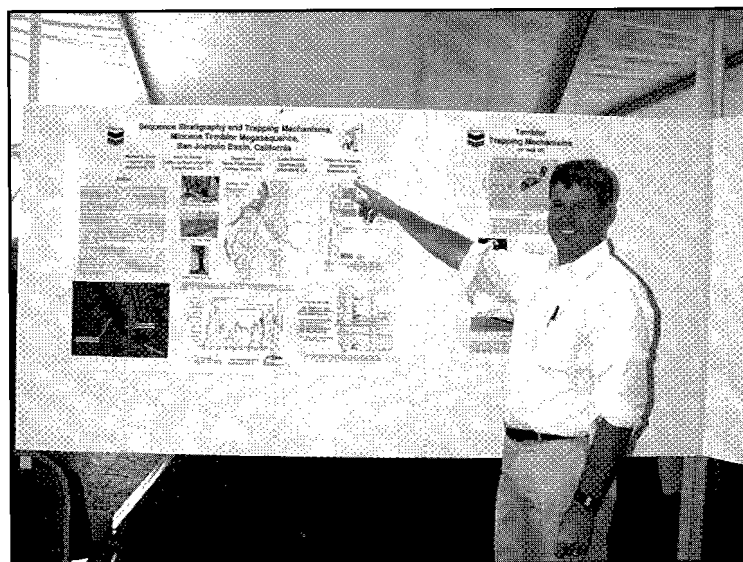
# At The Long Beach SPE Western Region/Pacific Section AAPG Convention



*Don Clarke (Pacific Section AAPG Convention Chairman) and Glenn Swanson (SPE Western Region Convention Chairman).*



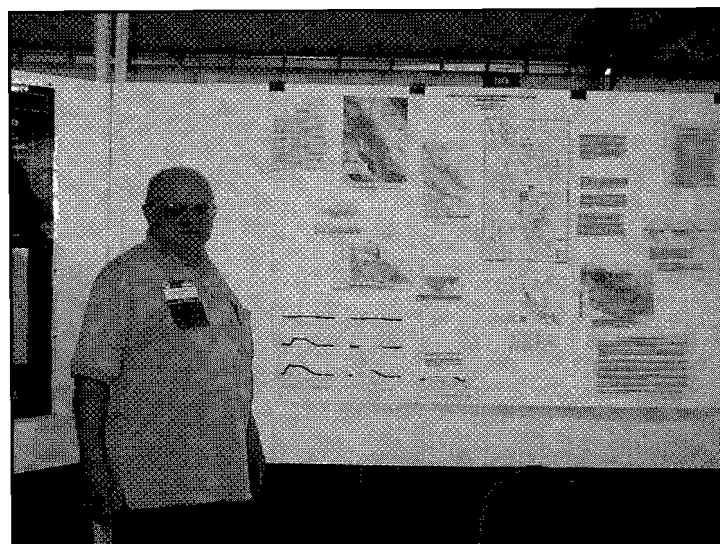
*Henry Walrond and Cathie Dunkel at the poster session.*



*Mike Clark mans his poster.*



*(l-r) Glenn Swanson, Don Clarke and Terry Thompson at the post-convention wrap up party.*



*Mel Erskine at his poster session.*

*Deadline for the next  
issue is:  
October 9, 2000*

*Check out the Pacific  
Section Web Site at:  
<http://www.psaapg.org>*

**NEWSLETTER** of the Pacific Section - American Association of Petroleum Geologists is published bi-monthly by the Pacific Section. Material for publication, requests for previous copies, and communications regarding advertising costs should be addressed to the editor -

**ALLEN BRITTON**, Core Laboratories, Inc.,  
3430 Unicorn Road, Bakersfield, CA 93308.  
E-mail: [corebak@ix.netcom.com](mailto:corebak@ix.netcom.com)

CHANGE OF ADDRESS, subscription and membership inquiries should be directed to:  
**MEMBERSHIP CHAIRMAN, PACIFIC SECTION AAPG**, P.O. Box 1072, Bakersfield, CA 93302.

TO ORDER PUBLICATIONS OF THE PACIFIC SECTION AAPG write to: **PUBLICATIONS COMM.: PACIFIC SECTION AAPG**, P.O. Box 1072, Bakersfield, CA 93302.

**PACIFIC SECTION AMERICAN ASSOCIATION  
OF PETROLEUM GEOLOGISTS  
OFFICERS 2000-2001**

President	(661) 326-5506	<b>KAY PITTS</b> <a href="mailto:Klpitts@aeraenergy.com">Klpitts@aeraenergy.com</a>
President Elect	(661) 392-8600	<b>ALLEN BRITTON</b> <a href="mailto:corebak@ix.netcom.com">corebak@ix.netcom.com</a>
Vice President	(661) 392-2280	<b>CYNTHIA HUGGINS</b> <a href="mailto:huggica@texaco.com">huggica@texaco.com</a>
Secretary	(661) 665-5412	<b>GEORGE STEWART</b> <a href="mailto:gestewart@aeraenergy.com">gestewart@aeraenergy.com</a>
Treasurer	(805) 389-7710	<b>HAROLD SYMS</b> <a href="mailto:harold.syms@mms.gov">harold.syms@mms.gov</a>
Past President	(661) 392-2464	<b>TERRY THOMPSON</b> <a href="mailto:thomptw2@texaco.com">thomptw2@texaco.com</a>

**Newsletter Staff**

Editor	(661) 392-8600	<b>ALLEN BRITTON</b> <a href="mailto:corebak@ix.netcom.com">corebak@ix.netcom.com</a>
Historical	(661) 324-0379	<b>BILL RINTOUL</b>
Geological	(661) 323-6828	<b>FRANK CRESSY</b>

**Associate Editors**

Alaska Geological Society	(907) 564-5677	<b>GARY PELKA</b> <a href="mailto:pelkagj@bp.com">pelkagj@bp.com</a>
Coast Geological Society	(805) 648-4996	<b>STEVE RICHARDSON</b> <a href="mailto:richconinc@aol.com">richconinc@aol.com</a>
Los Angeles Basin Geol. Soc.	(562) 570-3915	<b>DON CLARKE</b> <a href="mailto:doclark@ci.long-beach.ca.us">doclark@ci.long-beach.ca.us</a>
Northern California Geologic Society	(510) 284-5480	<b>DONALD LEWIS</b> <a href="mailto:donlew@worldnet.att.net">donlew@worldnet.att.net</a>
Northwest Energy Association	(503) 226-2411 ext.4689	<b>BOB BURNHAM</b> <a href="mailto:rhh@exchange.gasco.com">rhh@exchange.gasco.com</a>
Sacramento Petroleum Assoc.	(916) 322-1110	<b>JACK SMITH</b>
San Joaquin Geological Society	(661) 392-3047	<b>MARK WILSON</b> <a href="mailto:malw@chevron.com">malw@chevron.com</a>

**NEWSLETTER**  
**Pacific Section A.A.P.G.**  
**Post Office Box 1072**  
**Bakersfield, CA 93302**

**BULK RATE**  
**U.S. POSTAGE**  
**PAID**  
**BAKERSFIELD, CA**  
**PERMIT NO. 1163**



# PACIFIC PETROLEUM GEOLOGIST NEWSLETTER

of the Pacific Section  
American Association of Petroleum Geologists

November & December 2000 No. 6

## MESSAGE FROM THE PRESIDENT

I am delighted and honored to be penning my first "President's Message" for the *Pacific Petroleum Geologist Newsletter*. When I started my career in this industry twenty years ago, I never imagined that I would have the honor to represent this organization and the membership that have entrusted me with this honor. Looking back through the names of presidents that have preceded me through the decades I am reminded of the courage, foresight, and drive of many of the legends of our industry and our organization. I know that I speak for my fellow officers in hoping that our predecessors will be as proud of us as we are of them.

My fellow officers and I have the luxury of assuming leadership of an organization that is vibrant and healthy. We are indebted to outgoing officers **Mel Erskine** (Past President), **Dale Kunitomi** (Vice President), **Frank Cressy** (Secretary) and **Don Clarke** (2000 Convention Chair). Continuing on the committee are **Terry Thompson** (Past-President), **Allen Britton** (former Newsletter Editor and now President-Elect), and **Harold Syms** (1999-2001 Treasurer).

The following people have graciously agreed to continue as Standing Committee Chairs: **Bob Countryman** (Membership), **Larry Knauer** (Convention Committee Co-chair, Publications Chair, and Scotch Whiskey Quality Control), **Muriel Norton** (Finance), **Tom Wright** (Planning and Organization), **Bob Lindblom** (Honors & Awards), **Donna Thompson** (Legislation and Public Affairs), and **Paul Mock** (Youth Activities). **Mark Wilson** has generously agreed to take on the Directory in addition to his work as chair of the Pacific Section AAPG Foundation. **John Karachewski** and **Mike Clark** are continuing to represent us on the California Council of Geoscience Organizations and California Well Sample Repository, respectively.

I am very pleased to welcome the following people to the Executive Committee: **Cynthia Huggins** (Vice-President), **George Stewart** (Secretary), **Cathie Dunkel** (Newsletter Editor), **Jeff Shellebarger** (2001 Convention Chair), and **Don Lewis**, our new representative on the

National Advisory Council. Each affiliated society has a voting representative on the Executive Committee. This year the societies are ably represented by **Monte Mabry** (Alaska Geological Society), **Mike Barminski** (Coast Geological Society), **Don Clarke** (Los Angeles Basin Geological Society), **Mel Erskine** (Northern California Geological Society), **Doug Schwarm** (Northwest Energy Association), **Jack Smith** (Sacramento Petroleum Association), and **Alan Waggoner** (San Joaquin Geological Society).

People sometimes ask if the Pacific Section is relevant and if the membership is worthwhile. My answer to both is "yes." Experience consistently demonstrates that individuals count but organized individuals count even more. We are in a political year and in an industry that suffers from an image crisis in the arena of public opinion. Consequently, it is vital that we continue to be organized and carry our positions to politicians and the public. It is also vital that we stay informed. As I write this the news wires are reporting ten-year highs in the price of crude oil, oil workers being held hostage in Ecuador, and violence in the middle East. The recent presidential "debates" show that exploration in the Alaska National Wildlife Refuge is a hot topic. Other hot topics are the national inventories of crude oil and the Strategic Petroleum Reserve. These are exciting and historical times and our membership is directly involved in

*Continued on page 2*

## — INSIDE THIS ISSUE —

Message from the President .....	1
7 <sup>th</sup> Dibblee Medalist .....	4
News from Affiliated Societies .....	6
Schedule of Events .....	8
Member News .....	10
Snapshots from a Recent Meeting .....	12
Call for Papers—Pacific Section Convention .....	13
Teacher of the Year Program .....	14



*Continued from page 1*

these issues. Our challenge is to get involved and to contribute what we can rather than sit on the sidelines and watch the world go by.

It has been my privilege to meet with members of our affiliated societies. These meetings continually remind me that even though we may work different geologic basins we all do similar work. We have similar dreams, goals, and aspirations; we are all in this together. We all have this organization in common and its challenge is to effectively serve you and represent you.

You will shortly receive (if you have not already) the 2001 Convention Call for Papers. We are joining forces with the Cordilleran Section of the Geological Society of America for this meeting. This will once again be a first-time-ever joint meeting for the two societies. The geologic synergy seen in the planning promises that we will have another fantastic meeting both technically and socially. Mark your calendars or enter in your personal digital assistants the convention dates – April 9-11, 2001 at the Universal City (Los Angeles) Sheraton Hotel.

—*Kay Pitts*  
*President, Pacific Section AAPG*

## Well Data Research

*A Service Provider  
of*

**Historical Production & Injection Data  
for Wells within California**

***Initial Production to Present***

**(661) 324-5441**



5400 Rosedale Hwy

Bakersfield, CA 93308



*Joseph F. Elliott*

**Geophysical Consultant**

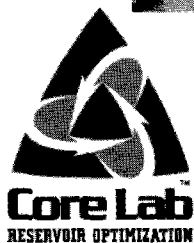
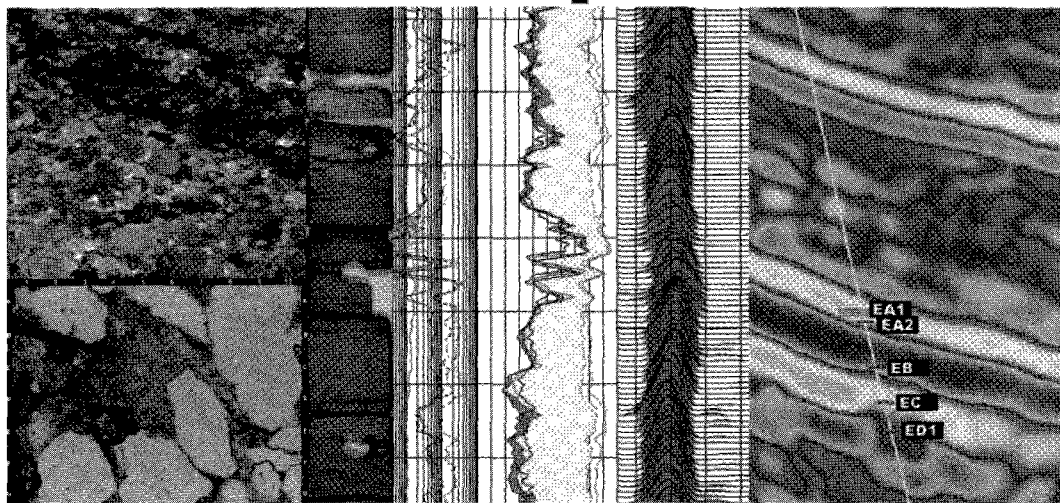
### Exploration Management

International/domestic  
interpretations  
synthetics  
modelling

Office: (949) 240-1505

26801 Lariat Circle  
San Juan Capistrano, CA 92675

# Reservoir Optimization



**Core Laboratories, Inc.**  
3430 Unicorn Road  
Bakersfield, CA 93308  
(661) 392-8600  
(661) 392-0824

E-mail: [corebak@ix.netcom.com](mailto:corebak@ix.netcom.com)

**Core Laboratories, Inc.**  
600 W. 58th Ave., Unit D  
Anchorage, AK 99518  
(907) 349-3541

[www.corelab.com](http://www.corelab.com)

**DO YOU WANT TO BE IN THE  
NEW 2001 DIRECTORY  
FOR THE  
PACIFIC SECTION  
AAPG – SEPM – SEG  
?**

The new Directory for the Pacific Section AAPG-SEPM-SEG will be assembled in January and ready in time for the Convention in April 2001. This Directory is a valuable tool to aid in locating and communicating with others in our industry. Since we only publish the Directory every other year, it is important that we have the most current and accurate information for each of our members.

If you are a member of the Pacific Section AAPG, contact Bob Countryman at [bobc855@aol.com](mailto:bobc855@aol.com) or 661-763-6178 to make sure that your dues are paid (only paid members will be included in the Directory) and your information is correct. *Members of the SEPM and SEG need to contact the membership officers in their societies.*

**IF YOU ARE A MEMBER, MAKE SURE YOUR DUES ARE PAID.  
IF YOU ARE NOT A MEMBER, IT IS TIME TO CONSIDER IT.  
CONTACT BOB COUNTRYMAN FOR INFORMATION.**

**Ad space will be available in the Directory.  
Don't be left out!**

This is a good way to get your business information printed in a place that will be used frequently by potential customers for the next two years.

**For more information contact Larry Knauer  
at:  
[knauelc@texaco.com](mailto:knauelc@texaco.com)  
661-392-2471**

# Thomas A. Steven – 7<sup>th</sup> Dibblee Medalist

The 7<sup>th</sup> Dibblee Medal, presented on the Palos Verdes Peninsula AAPG Field Trip on June 17, 2000, was conferred by 88-year old Tom Dibblee on Dr. Thomas A. Steven, who retired from the USGS in 1985 after a 43-year career.

Citationist Pete Rowley (4<sup>th</sup> Dibblee Medalist) related that Tom Steven grew up in California and was one of the first two graduates of the geology program at San Jose State College in 1939, followed by a Ph.D. from UCLA in 1950. Steven later recounted that at UCLA he was inspired by Jim Gilluly and Bill Putnam, but that he and his colleagues also “stood in awe of a ghostly legend named Dibblee who loped across the southern Coast Ranges, mapping geology (for Richfield) like a dervish, disappearing for weeks on survival rations, appearing unexpectedly to recharge, only to disappear into the chaparral again.” Steven added “I met Tom Dibblee minus sixty years and fifty pounds ago, he was a lanky whip of a man, moved with purpose, said only what needed to be said, and was gone. We almost, but not quite, stood at attention in his presence, for such was our respect.”

Rowley’s account of Steven’s life included the two years (1950-1952) spent in Washington D.C., where Steven directed a USGS office that processed manuscripts and maps produced by the old Mineral Deposits Branch into publishable forms. There he learned the process of map preparation and publication, which proved to be invaluable in preparing subsequent map products. He learned the valuable lessons of what detail can be held and what has to be generalized to accommodate the physical requirements of drafting and printing maps and the value of color choice to the utility of the final product.

Steven’s career has produced significant science and has been especially notable for the study of volcanic fields. Steven and his colleagues conducted geologic mapping, map-based publications, and related studies in volcanology and metallic mineral resources of the two largest volcanic fields in the conterminous United States, the San Juan Mountains in Colorado, and the Marysville volcanic field in Utah. In these studies, they made major advances in the knowledge and understanding of volcanic rocks, magmatic processes, and calderas that helped to set standards for studies of volcanic rocks elsewhere in the world.

The San Juan volcanic field has had a long history of mining activity and detailed study of the mining districts



Tom Stevens receives the 7<sup>th</sup> Dibblee Medal from Tom Dibblee in Palos Verdes, California.  
(Photo Courtesy of Sophie Dreifuss)

showed that the basic framework of the volcanic field established in the early 1900s was no longer adequate to carry the load of rapidly evolving concepts in volcanic geology. Many of the ore deposits were related to caldera structures and plutons. As a consequence, they mapped the whole volcanic field at the scale of 1:250,000. The primary summary map product of the San Juan Mountains project came out in 1974 as the Durango 1 x 2 degree sheet. Peter Lipman noted

that “one of Tom’s greatest virtues was in getting maps and reports out ASAP so that they would be available to the public.”

Steven coordinated a multidisciplinary team on the Richfield 1 x 2 degree quadrangle in Utah, which involved geologists, geophysicists, geochemists, remote sensors, and others. The top-notch geologic crew included Hal Morris, Skip Cunningham, Myron Best, Pete Rowley, John Anderson, and the godfather of Utah geology, Lehi Hintze (1<sup>st</sup> Dibblee Medalist). In the San Juan Mountains of Utah Steven recounted “we were able to cover that part of the Pioche-Marysville mineral belt within the Richfield quad at no scale smaller than a mile to the inch, and released the initial maps at the scales mapped. We generalized these maps to 1:250,000 scale for the final compilation.”

Steven’s resume lists more than 170 publications, some of them comprehensive Professional Papers. These publications include more than 40 geologic maps. Like all other Dibblee Medalists, Steven feels he fell far short of Dibblee’s output, but his maps were at many scales and included 20 7<sup>th</sup> minute quads (1:24,000), five at 1:48,000 or 1:50,000, two at 1:62,500, three at 1:100,000, and two at 1:250,000 scale. Steven’s legacy is real: outstanding productivity of high-quality publications.

Steven is a Fellow of the Geological Society of America and a Fellow of the Society of Economic Geologists; he received the Department of Interior Meritorious Service Award and is past president and honorary member of the Colorado Scientific Society. Tom and his wife, Grace, have lived in the Denver area most of his 43-year (1942-1985) USGS career and currently reside in Lakewood. Tom has continued his geologic research since his retirement in 1985 and has progressively concentrated his efforts on the late Cenozoic geomorphic history of the southern Rocky Mountains. Concurrently, he took up poetry as an unrelated

*Continued on page 5*



*Continued from page 4*

avocation, and has written more than 200 poems on a wide variety of subjects (very few of which are related to geology).

Steven was grateful for the crowing honor of being chosen as a medalist by the Dibblee Foundation and especially to have Dibblee present at its presentation. This brought back a great measure of the awe he felt in those long-ago student days. He was also thankful for all the square and cubic miles he had been privileged to map from then to now for "Good geologic maps are the basic data sources and the primary interpretive media for much of our science."

In closing, he stated that he followed "the lead of a familiar trailblazer named Tom Dibblee, who at an age well in advance of mine, continues on a similar quest, and with passion. What better company can you get?" and recalled those "...joyous times of solitude when I was alone in the hills trying to solve some perplexing problems, when it seems that I was trying to read a book that had no title or table of contents, and whose text pages were blank. This is the metaphor I have used in a bit of verse that tries to explore beyond the mechanical basics of field mapping:

A READING  
BY TOM STEVEN

Let us read from a book  
That none of us can see,  
Formless words without sound  
In a language yet to be.

Read of those things  
That must come of our wills,  
Of those things that we would,  
Would be."

*Thomas A. Steven*

*Contributed by Pete Rowley, Skip Cunningham, and Dottie Stout*

#### THE DIBBLEE GEOLOGICAL FOUNDATION

The Dibblee Geological Foundation was created as a non-profit California education organization by those who admire the quality and quantity of Tom Dibblee's geologic mapping. The Foundation's mission is straightforward and simple: To help preserve the scientific, technical, educational, and economic values of Dibblee's life work through timely publication. The Foundation consists of a group of volunteer directors and a staff of two dedicated to publishing as many maps as possible. For more information log onto the Dibblee Foundation web site at <http://dibblee.geol.ucsb.edu/info.html>.

#### POSITION AVAILABLE

**GEOLOGIST (PETROLEUM)** - Position is in the Oil and Gas/Special Properties Section of the Kern County Assessor's Office. This individual performs varied geologic work primarily associated with the evaluation of oil and gas properties for property tax purposes; provides technical assistance to appraisal and engineering staff with geologic problems involving oil and gas and other mineral properties; assists with appraisal work; serves as expert witness; does geological reservoir/formation analysis; and meets with oil industry representatives. Candidate should have good computer, organizational, and communication skills. Position requires BS Degree in geology/geophysics and 5 to 15 years experience. Prior work in development geology in the San Joaquin Valley and possession of California license as Registered Geologist preferred. Submit resume to: Kern County Assessor's Office, ATTN: Oil and Gas Section, 1115 Truxtun Avenue, Bakersfield, CA 93301, or FAX to (661) 868-3209.

J.M. "BUZZ" DELANO, JR.  
Consultant

Cell (661) 747-0337  
Work (661) 325-3987  
Fax/Home (661) 832-5229  
Work/Fax (661) 322-2941

#### Delano Petrophysical Consulting Services

Email: BuzzBake@aol.com  
5401 Business Park South  
Suite 214  
Bakersfield, California 93309

Dipmeter Analysis  
Tape Conversion Editing  
Expert Petrophysical Analysis  
Wellsite Supervision

WELL INFORMATION AND INSTRUMENTATION

#### EPOCH

LES COLLINS  
WEST COAST DIVISION MANAGER  
CALIFORNIA REGISTERED GEOLOGIST #3907

3919 ROSEDALE HIGHWAY  
BAKERSFIELD, CALIFORNIA 93308  
661-328-1595  
661-635-1452 DIRECT  
661-328-1623 FAX  
661-838-7978 CELLULAR  
lcollins@ndbors.com EMAIL

## NEWS FROM THE AFFILIATED GEOLOGICAL SOCIETIES

### ALASKA

Alaska Geological Society  
P.O. Box 101288  
Anchorage, AK 99510  
[www.seclabs.com/ags](http://www.seclabs.com/ags)  
Contact: Monte Mabry  
907-265-1653

Luncheon meetings are held the third Thursday of the month at the Anchorage Hilton from 11:30 a.m. to 1:00 p.m. Upcoming meetings are scheduled for November 16 and December 14 (see Schedule of Events). For information, contact **Greg Wilson** at 907-263-4748 or [gcwilso@ppco.com](mailto:gcwilso@ppco.com); for reservations, contact 907-263-4232. Reservations should be made by Monday before the meeting.

### COAST

Coast Geological Society  
P.O. Box 3055  
Ventura, CA 93006  
[www.coastgeologicalsociety.org](http://www.coastgeologicalsociety.org)  
Contact: Mike Barminski  
805-644-3397

Dinner meetings are held the third Tuesday of the month (except July and August) at the American Legion Hall (83 S. Palm Street) in Ventura. Social hour starts at 6:00 p.m. and dinner is served at 7:00 p.m. The cost of dinner is \$12 (with reservation), \$17 (without reservation), or \$7 (students and K-12 teachers); the talk is free. Upcoming meetings are scheduled for November 21 and December 19 (see Schedule of Events). For information or reservations, contact **Steve Richardson** at [richconinc@aol.com](mailto:richconinc@aol.com) or **John Surigao** at 805-653-7975 (voice) or 805-653-7452 (fax); please make reservations by e-mail if possible. Reservations by e-mail should be made by 5:00 p.m. on Thursday before the meeting; reservations by voice or fax should be made by noon on Friday before the meeting.

Welcome to the new CGS officers: **Mike Barminski** (President), **Bob Orlando** (Vice President), **Steve Richardson** (Secretary and Past President), **Larry Gurrola** (Treasurer), and **David Panaro** and **Hal Myers** (Webmasters).

CGS announces its 2001 competition for Excellence in the Teaching of Natural Resources in the Earth Sciences, for which it will award \$250 to a local K-12 teacher in early Spring 2001. The winner will also be eligible for the Pacific Section AAPG 2001 Teacher of the Year Program (see pages 14-15). For information and entry forms, contact **Joan Barminski** at [joan.barminski@mms.gov](mailto:joan.barminski@mms.gov) or 805-389-7707.

### LOS ANGELES

Los Angeles Basin  
Geological Society  
c/o Don Clarke  
City of Long Beach  
Dept. of Oil Properties  
211 E. Ocean Blvd. Ste. 500  
Long Beach, CA 90802  
562-570-3915

Luncheon meetings are held the third Thursday of the month at 11:30 a.m. Upcoming meetings will be held in the Monarch Room at The Grande at Willow Street Centre (4101 E. Willow Street) in Long Beach and are scheduled for November 16 and December 21 (see Schedule of Events). The cost is \$17 or \$6 (students). For information or reservations, contact **Vid Duda** at 562-590-5271 or [dudav@slc.ca.gov](mailto:dudav@slc.ca.gov). Reservations should be made by Tuesday before the meeting.

LABGS announces its 2001 competition for Excellence in the Teaching of Natural Resources in the Earth Sciences, for which it will award \$200 to a local K-12 teacher in Spring 2001. The winner will also be eligible for the Pacific Section AAPG 2001 Teacher of the Year Program (see pages 14-15). For information and entry forms, contact **Karla Tucker** at [ktrk@aol.com](mailto:ktrk@aol.com).

LABGS and the Los Angeles Basin section of SPE will co-sponsor the first annual "Petroleum Operations Day" for local K-12 teachers on November 10. The teachers will tour a THUMS oil island and the Equilon oil refinery, and learn about the history of oil. For information, contact **Don Clarke** at 562-570-3915 or [doclark@ci.long-beach.ca.us](mailto:doclark@ci.long-beach.ca.us).

## NEWS FROM THE AFFILIATED GEOLOGICAL SOCIETIES

### **NORTHERN CALIFORNIA**

Northern California  
Geological Society  
9 Bramblewood Court  
Danville, CA 94506-1130  
Contact: Dan Day  
925-294-7530

Evening meetings are held on the last Wednesday of the month at the Masonic Center (9 Altarinda Road) in Orinda. Social hour starts at 6:30 p.m. and the talk starts at 7:00 p.m. (no dinner). The cost is \$5.00. The upcoming meeting is scheduled for November 29 (see Schedule of Events). For reservations, contact **Dan Day** at 925-294-7530 (leave your name on the voice recorder any time before the meeting).

**Marlan Downey**, President of AAPG, will speak at a December 8 meeting that will be hosted by Chevron Overseas Petroleum, Inc. The meeting will be held from 11:30 a.m. to 1:00 p.m. at Chevron Park in San Ramon, CA (see Schedule of Events).

Welcome to the new NCGS officers: **Ron Crane** (President), **Randy Kirby** (President-Elect and Scholarship), **Ernie Espenschied** (Field Trip Coordinator), **Judy Hayes** (Membership Secretary), **Don Downey** (Treasurer), **Mark Detterman** (Program Chair), **Aase Schoen** (K-12 Programs), and **Dan Day** (Newsletter Editor).

### **NORTHWEST**

Northwest Energy Association  
P.O. Box 6679  
Portland, OR 97228-6679  
www.nwenergyassociation.org  
Contact: Doug Schwarm  
503-603-6689

Luncheon meetings are usually held the second Friday of the month at 1:00 p.m. at the Multnomah Athletic Club in Portland. The upcoming meeting is scheduled for November 10 (see Schedule of Events). The cost is \$15. For information or reservations, contact **Shelly Thomas** at 503-848-2947 or **Jack Meyer** at 503-226-4211 ext. 4683.

Welcome to the new NWEA officers: **Doug Schwarm** (President), **Jack Meyer** (Vice President), **Amanda Briles** (Secretary), and **John Jones** (Treasurer).

### **SACRAMENTO**

Sacramento Petroleum  
Association  
P.O. Box 254443  
Sacramento, CA 95865-4443  
Contact: Jack Smith  
916-322-1110

Luncheon meetings are held the third or fourth Wednesday of the month at noon at the Hungry Hunter Restaurant (450 Bercut Drive) in Sacramento. The upcoming meeting is scheduled for November 15 (see Schedule of Events). The cost is \$15. For information or reservations, contact **Jack Smith** at 916-322-1110.

### **SAN JOAQUIN**

San Joaquin  
Geological Society  
P.O. Box 1056  
Bakersfield, CA 93302  
www.sjgs.com  
Contact: Dan Stewart  
661-763-2008

Dinner meetings are held the second Tuesday of the month (except summer months) at the American Legion Hall (2020 H Street) in Bakersfield. The icebreaker starts at 6:00 p.m., dinner is served at 7:00 p.m., and the talk starts at 8:00 p.m. Upcoming meetings are scheduled for November 14 and December 12 (see Schedule of Events). The cost of dinner is \$15.00 (with reservations) or \$18.00 (without reservations); the talk is free. For information or reservations, contact **Russ Robinson** at 661-665-6266 or rrobinson@csu.edu.

SJGS announces its 2001 competition for Excellence in the Teaching of Natural Resources in the Earth Sciences, for which it will award \$500 to a local K-12 teacher in February 2001. The winner will also be eligible for the Pacific Section AAPG 2001 Teacher of the Year Program (see pages 14-15). For information and entry forms, contact **Paul Mock** at 661-395-6499 or phmo@chevron.com.

# SCHEDULE OF EVENTS

## Pacific Section AAPG & Affiliated Geological Societies

### November & December 2000

#### November 10

##### **LABGS & LASPE Teacher's Field Trip**

*Location:* Long Beach, CA area

*Leaders:* Scott Hara (Tidelands Oil Co.) and Don Clarke (City of Long Beach Dept. of Oil Properties)

#### November 10

##### **NWEA Monthly Luncheon Meeting**

*Location:* Multnomah Athletic Club, Portland, OR

*Speaker:* Steve Pappajohn (The Pacific Institute)

*Title:* 21<sup>st</sup> Century Geoscientists As Energy Industry Innovators: The Power of Bizarre Exploration Ideas and Elegant Technology Solutions

#### November 14

##### **SJGS Monthly Dinner Meeting**

*Location:* American Legion Hall, Bakersfield, CA

*Speaker:* Tim Elam and Bill Kempner (Chevron North America Exploration & Production)

*Title:* The Prelude to East Lost Hills Deep

#### November 15

##### **SPA Monthly Luncheon Meeting**

*Location:* Hungry Hunter Restaurant, Sacramento, CA

*Speaker:* Michael Fadden (Gateway Energy Corporation)

*Title:* Nitrogen Reinjection Technology Can Turn a Sow's Ear Into A Silk Purse

#### November 16

##### **AGS Monthly Luncheon Meeting**

*Location:* Anchorage Hilton, Anchorage, AK

*Speaker:* John Armstrong

*Title:* Diamond Exploration and Mining in the Northwest Territories

#### November 16

##### **LABGS Monthly Luncheon Meeting**

*Location:* The Grand at Willow Street Centre, Long Beach, CA

*Speaker:* Richard D. Fritz (Executive Director, AAPG)

*Title:* Energy Dynamics and Resources – What is the Future for AAPG and its Membership?

#### November 21

##### **CGS Monthly Dinner Meeting**

*Location:* American Legion Hall, Ventura, CA

*Speaker:* John Crowell (University of California, Santa Barbara)

*Title:* Structure of the Transverse Ranges

#### November 29

##### **NCGS Monthly Dinner Meeting (Family Night)**

*Location:* Masonic Center, Orinda, CA (tentative)

*Speaker:* Chris McKay (NASA Ames Research Center)

*Title:* Landscape Geomorphology and the Search for Water on Mars: Implications for the Development of Life

#### December 2

##### **NCGS Technical Demonstration (hosted by Chevron)**

*Location:* Chevron Park, San Ramon, CA

*Speakers:* Bob Kieckhefer, Vernie Green (Chevron Overseas Petroleum, Inc.), and Frank Picha (Consultant)

*Title:* Geology and 3-D Demonstration of Tengiz Oil Field and Absheron Prospect, Caspian Sea

#### December 8

##### **NCGS Monthly Luncheon Meeting**

*Location:* Chevron Park, San Ramon, CA

*Speaker:* Marlan Downey (President, AAPG)

*Topic:* Predicting the Future

#### December 12

##### **SJGS Monthly Dinner Meeting**

*Location:* American Legion Hall, Bakersfield, CA

*Speakers:* Thom Davis and Jay Namson (Davis and Namson Consulting)

*Title:* Fold and Thrust Structure and Exploration Concepts Along the Southwestern Margin of the San Joaquin Basin, California

#### December 14

##### **AGS Monthly Luncheon Meeting**

*Location:* Anchorage Hilton, Anchorage, AK

*Speaker:* To Be Determined

*Title:* To Be Determined

#### December 19

##### **CGS Monthly Dinner Meeting (Spouse Night)**

*Location:* American Legion Hall, Ventura, CA

*Speakers:* Bill Bilodeau (California Lutheran University) and others

*Topic:* Costa Rica

#### December 21

##### **LABGS Monthly Luncheon Meeting**

*Location:* The Grand at Willow Street Centre, Long Beach, CA

*Speaker:* Dan Ponti

*Topic:* FOQUS LA Project

.....

## 2001 Events

- |             |                                  |
|-------------|----------------------------------|
| January 9   | • SJGS Monthly Dinner Meeting    |
| January 18  | • LABGS Monthly Luncheon Meeting |
| January 27  | • NCGS Field Trip                |
| February 10 | • BLM Field Trip                 |
| February 13 | • SJGS Monthly Dinner Meeting    |
| April 9-11  | • Pacific Section Convention     |
| May         | • NCGS Field Trip (proposed)     |
| June 3-6    | • AAPG Annual Meeting            |



# November 2000



Sun	Mon	Tue	Wed	Thu	Fri	Sat
			1	2	3	4
5	6	7	8	9	10 LABGS Field Trip NWEA Meeting	11
12	13	14 SJGS Meeting	15 SPA Meeting	16 AGS Meeting LABGS Meeting	17	18
19	20	21 CGS Meeting	22	23	24	25
26	27	28	29 NCGS Meeting	30		



# December 2000



Sun	Mon	Tue	Wed	Thu	Fri	Sat
					1	2 NCGS Technical Demonstration
3	4	5	6	7	8 NCGS Meeting	9
10	11	12 SJGS Meeting	13	14 AGS Meeting	15	16
17	18	19 CGS Meeting	20	21 LABGS Meeting	22	23
24 31	25	26	27	28	29	30

## MEMBER NEWS

### Honors & Awards

Two members of the Pacific Section AAPG are among a select group of individuals will receive AAPG's highest honors and awards in 2001. **John Harbaugh** will be awarded the AAPG Distinguished Educator Award, which is presented for distinguished and outstanding contributions to geological education, both at the university level and toward education of the general public. **Bob Countryman** will be awarded the AAPG Distinguished Service Award, which is presented to those who have distinguished themselves in singular and beneficial long-term service to AAPG. Congratulations John and Bob!

### In Memory

**Juanita Bennett** – *Petroleum Landman*, Bakersfield, California

**Donald L. Marcus** – *Engineering Geologist*, Thousand Oaks, California

**Daniel J. Pickrell** – *Independent*, San Mateo, California

**Frederick C. Porter** – *Consultant*, Bakersfield, California

#### DONALD L. MARCUS

Donald Lawrence Marcus, 49, of Thousand Oaks, California, went home to be with the Lord on July 26, 2000, after a courageous battle with cancer.

Don was born in Chicago, Illinois, on December 21, 1950. His family later moved to Santa Barbara, California, where he grew up. He graduated from the University of California, Santa Barbara, in 1972 with a B.S. degree in Geology and received his M.S. degree in Geology in 1974 at the University of Texas at Arlington. He became a Certified Engineering Geologist in 1995. He was a member of the [Coast] Geological Society.

Don was an avid surfer, skier, computer expert, and artist. He had a zest for life and, no matter how big the challenge, he was never discouraged. His travels took him from Canada to the jungles of Costa Rica.

He is survived by his soul-mate in life Nancy Marcus, daughter Ashley Marcus, and son Todd Marcus; parents Bernard and Louise Marcus; sisters Bonnie Graybill and Sally Rodeman; brother Leonard Marcus; and Debbie and Rachelle Koski, who loved him dearly.

A memorial ceremony was celebrated on August 6, 2000, at Rincon Beach, California.

Donations would be welcomed to the [Coast] Geological Society.

—Contributed and read by Bob Michael at the September 19, 2000, meeting of the Coast Geological Society.

—Editor's note: The CGS has already received some donations to its Scholarship Fund in Don's name and would welcome other memorial contributions.

#### JUANITA BENNETT

Juanita Bennett passed away Aug 1, 2000. Juanita was a self-employed petroleum landman. During her career, she worked for Gulf Oil, Chevron U.S.A., Shell Oil Company, Santa Fe Energy, and Aera Energy. She and her husband, Michael, owned and operated Bennett Land and Minerals, a petroleum land consulting company. Juanita served as a director of many local non-profit organizations, most recently including Project Clean Air, Community Energy Night, Smart Growth Coalition, Chevron Valley Credit Union, and the Bakersfield Association of Petroleum Landmen.

Juanita is survived by her husband, Michael, her father-and mother-in-law, Robert and Ellen Bennett, and her sister-in-law, Catherine Bennett. She was preceded in death by her parents and her brother.

—From the Bakersfield Californian

—Kay Pitts' note: Juanita was a flamboyant, fun person with a special way of making everyone feel welcome. She has contributed in many ways to the San Joaquin Geological Society over the years. She is missed.

## NEW PUBLICATION

First in a New Series of Publications  
for the Pacific Section AAPG

CD-ROM Series 1

### **Geochemistry of California's Main Hydrocarbon Producing Basins**

(This data was previously available only to  
subscribers of these studies.)

Our first publication of geologic material on a CD-ROM is "Collection of Papers about the Oil, Gas, and Source Rock Investigations Carried Out in the San Joaquin, Santa Maria, Santa Barbara, Ventura and Los Angeles Basins, California." These papers were written in the mid-to-late 1980s and in 1997 by staff members of Global Geochemistry Corporation. Dr. Ian R. Kaplan, a professor of geochemistry at UCLA, headed the corporation. This CD includes ten chapters, each representing a different report. There are 4600 pages of material.

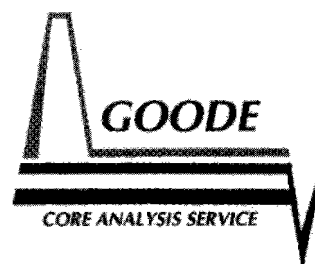
Cost is \$39.00 + \$5.00 shipping and handling.

*For more information or to place an order, write to:*

**Publications  
Pacific Section AAPG  
P.O. Box 1072  
Bakersfield, CA 93302**

*Or contact:*

Larry Knauer at [knauelc@texaco.com](mailto:knauelc@texaco.com) or  
661-392-2471.



**Bryan A. Bell**

(805) 322-5540  
FAX 322-5576  
24 Hour Service

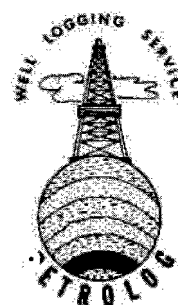
1400 Easton Drive, Suite 111 • Bakersfield, CA 93309

## THIS SPACE AVAILABLE FOR ADVERTISING

This newsletter is distributed to approximately 800 geologists, as well as nearly 100 libraries and universities. Placing an ad here is a good way to develop name recognition and remind customers how to reach you.

*For advertising information, contact:*

Larry Knauer  
[knauelc@texaco.com](mailto:knauelc@texaco.com)  
661-392-2471



## PETROLOG

PETROLOG, INC.

JOHN T. WILLIAMS  
R.G., C.P.G.

**Geological Well Logging**

459 DOROTHY AVENUE  
VENTURA, CA 93003

(800) 750-4590 • (805) 642-2847 • FAX (805) 642-6550

## FOUNDATION FUNDRAISER

The Pacific Section AAPG Foundation  
solicits your contribution of  
**OLD GEOLOGIC LITERATURE / BOOKS**  
to sell for the benefit of endowment funds  
at the Pacific Section's April 2001 Convention.  
The Pacific Section AAPG Foundation is a  
501(c)(3) corporation.

Contact Mark L. Wilson at:  
[malw@chevron.com](mailto:malw@chevron.com)  
or 661-395-6364.

## Newsletter Transition

**Allen Britton**, long-time editor of the *Pacific Petroleum Geologist Newsletter* and President-Elect of the Pacific Section AAPG, is passing the editorial reins to **Cathie Dunkel**. The entire Pacific Section membership has benefitted from Allen's superb editorial efforts and is fortunate that he will be continuing and expanding his involvement as President-Elect. Cathie will take over as editor of future newsletters and will welcome any ideas or suggestions for features or format. **Larry Knauer** will coordinate advertising for the newsletter and **Bob Countryman** will continue to provide mailing information for its distribution.



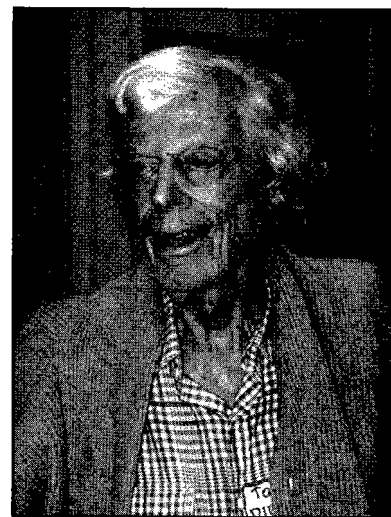
## SNAPSHOTS FROM A RECENT MEETING

The Coast Geological Society was honored to have Tom Dibblee speak at its October 17, 2000, dinner meeting in Ventura. The abstract and photographs from the meeting are presented here.

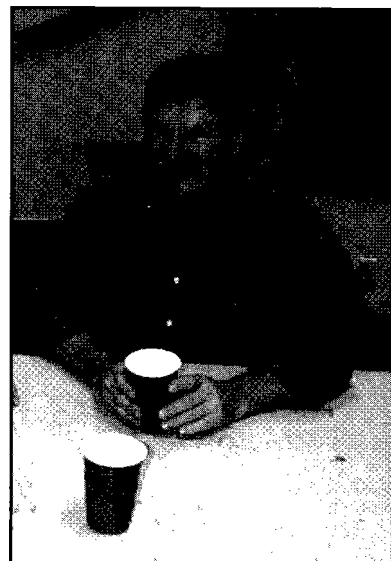
### Quaternary Compressive Uplift and Basin Genesis of the Santa Barbara Coastal Area, California

Thomas W. Dibblee, Jr., Department of Geological Sciences, University of California, Santa Barbara, and Dibblee Geological Foundation, Santa Barbara, California

A narrow, east-west trending coastal valley terrane from Carpinteria through Santa Barbara to Goleta lies between the Santa Ynez Mountains and a discontinuous strip of low hills and mesas near the sea coast. The Santa Ynez Range is essentially an unfaulted block of a thick, mostly lower to middle Tertiary sedimentary sequence, elevated by southward tilt resulting from steep northward thrusting on the Santa Ynez fault. The middle Tertiary part of this tilted sequence underlies the coastal lowland terrane, where it is complexly disrupted by a system of east-west trending, mostly south-side-up reverse faults, some of which are active. The narrow valley terrane of the coastal lowlands is a structurally depressed basin, here designated as the Santa Barbara coastal basin, filled with up to 1000 m of Quaternary shallow-marine and alluvial deposits derived from the Santa Ynez Mountains, unconformable on the tilted middle Tertiary formations. The alluvial fan deposits are involved in the latest tectonic movements and include the alluvial fan of Rattlesnake Canyon that is anticlinally folded on a fault at Mission Ridge, and that of San Antonio Canyon to the west which is deformed likewise. In Pliocene time the lowland area was part of the south-tilted block being elevated to generate the Santa Ynez Range. By Pleistocene time, as this movement continued, the south coastal margin became depressed below sea level by downtilt to form the elongate Santa Barbara coastal basin, filling with detritus from the Santa Ynez Range, while the coastal mesa-hill fault blocks were upfaulted above sea level against the basin. These crustal shortening movements are the effects of regional compression during the late Cenozoic Coast Range orogeny. The narrow Santa Barbara coastal basin is unique because it must have been formed by compressive downward tilting in Quaternary time.



Tom Dibblee received a warm welcome—and belated 89<sup>th</sup> birthday wishes and cake—from his Coast Geological Society colleagues.

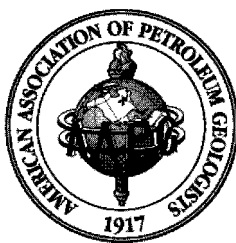


Helmut Ehrenspeck (Dibblee Geological Foundation) demonstrated that one beer cup is never enough.



Mike Barminski (President, Coast Geological Society) and Art Wahl modeled the merits of solids versus stripes.





# **HOLLYWOOD**

*"Geology is Universal"*

## **CALL FOR PAPERS**

**PACIFIC SECTION**

**AMERICAN ASSOCIATION OF  
PETROLEUM GEOLOGISTS**

**AND**

**CORDILLERAN SECTION  
GEOLOGICAL SOCIETY OF AMERICA**

**JOINT MEETING**

**APRIL 9 - 11, 2001**

**SHERATON UNIVERSAL HOTEL  
UNIVERSAL CITY, CALIFORNIA**

To Submit an Abstract, simply point your browser to:

**<http://www.geosociety.org/sectdiv/cord/01cdmtg.htm#abs>**

**Abstracts for all sessions should be submitted on-line at the GSA website.**

**If you have any questions, contact Peter W. Weigand at (818) 677-2564  
or Jeffery E. Shellebarger at (661) 395-6385.**

**Announcing  
Pacific Section AAPG  
\$500 Award for  
TEACHER OF THE YEAR – EXCELLENCE IN THE TEACHING OF  
NATURAL RESOURCES IN THE EARTH SCIENCES**

The Pacific Section AAPG will award \$500 in April of 2001 for Excellence in the Teaching of Natural Resources in the Earth Sciences. Nominees for this award will come from the following Pacific Section AAPG affiliated societies:

**Local Society**

Alaska Geological Society  
Coast Geological Society  
Los Angeles Basin Geological Society  
Northern California Geological Society  
Northwest Energy Association  
Sacramento Petroleum Association.  
San Joaquin Geological Society

**Coordinator**

Sue Karl  
Joan Barminski  
Karla Tucker  
Aase Schoen  
Bob Burnham  
Jack Smith  
Paul Mock

**E-mail Contact**

skarl@usgs.gov  
joan.barminski@mms.gov  
ktr2@aol.com  
aase@silcon.com  
rhb@exchange.gasco.com  
jsmith@consrv.ca.gov  
phmo@chevron.com

Each society shown above is encouraged to sponsor local competition for teachers in their area and submit a winning nominee for the Pacific Section AAPG award. The Pacific Section winner will also be automatically entered in the year 2002 American Association of Petroleum Geologists national award of the same name.

The Pacific Section award is \$500 for the winner to use in their school science program or for that teacher to attend science conferences or training seminars. Up to \$250 in expenses is also allowed for the winner to attend the year 2001 Pacific Section Meeting at Universal City and enroll in the short course "Rocks In Your Head." Pacific Section requirements for teachers receiving this award are as follows:

**Requirements:**

1. A minimum of three full years of full-time teaching experience at any level K-12.
2. Teaching at least one course per year on natural resources. Natural resources are defined as Earth materials used by civilizations past and present such as:
  - Inorganic substances found in the Earth such as water, mineral ores, building stone, aggregate, rocks and sediments
  - Organic materials such as oil, gas, coal, and soil
3. Teaching should include scientific study of these resources, for example:
  - Their origin, discovery, extraction, and/or historical and present uses
  - It may also include the preservation of the environment, reclamation, and the conservation of resources.
4. Entries will include:
  - A brief description of the teacher's philosophy of the teaching of natural resources
  - A description of the unit with outline
  - Complete resume
  - Two letters of recommendation: one from a colleague and one from an administrator.
5. The unit will be evaluated on:
  - Depth and breadth of concepts (resource origin, discovery, processing, usage, and reclamation)
  - Creativity of presentation
  - Balanced treatment of information; societal needs vs. environmental issues.

It is recommended that affiliated societies adopt the guidelines shown above to insure that their winning candidate qualifies for the Pacific Section competition. In an effort to promote full participation among member societies, the Pacific Section AAPG is donating \$250 to each participating society for 2001 local TOTY competition awards. Winning nominees from each local society must be submitted to P. H. Mock, Pacific Section AAPG, no later than March 1, 2001. (See sample entry form for use as a cover page for all Pacific Section entries.) If you have questions or need further information, please contact Paul Mock by phone or e-mail.

Paul H. Mock  
Pacific Section AAPG – Youth Education & Activities  
c/o Chevron  
P.O. Box 1392  
Bakersfield, CA 93302  
(661) 395-6499; Fax (661) 395-6542, (661) 395-6533  
phmo@chevron.com

**ENTRY FORM**  
**Pacific Section AAPG**  
**\$500 Award for**  
**EXCELLENCE IN THE TEACHING OF**  
**NATURAL RESOURCES IN THE EARTH SCIENCES**

**Entrant Information Cover Page** (Please print or type all information)

Name \_\_\_\_\_ School \_\_\_\_\_

Address \_\_\_\_\_

City \_\_\_\_\_ County \_\_\_\_\_ Zip Code \_\_\_\_\_

Telephone # (home) \_\_\_\_\_ (work) \_\_\_\_\_

Current position and grades taught \_\_\_\_\_

Expected teaching position next year \_\_\_\_\_

Number of years teaching \_\_\_\_\_ Other subjects taught \_\_\_\_\_

Highest degree and year earned \_\_\_\_\_ Subject area(s) of degree \_\_\_\_\_

The above information and information supplied with this entry are, to the best of my knowledge, true and correct. I understand that a \$500 award will be made to me for my school for use under my direction only, but can include my attendance at science conferences or training seminars. I am responsible for all taxes due as a result of this portion of the award. If a winner, I hereby give my consent to use my name and photograph for publicity purposes only.

Signature \_\_\_\_\_ Date \_\_\_\_\_

The above information and information supplied with this entry are, to the best of my knowledge, true and correct, and represents the teacher's current assignment. I understand that a \$500 award will be made to the above-named teacher for my school for use under that teacher's direction only, but can include that teacher's attendance at science conferences or training seminars. I also understand that neither my school nor I is responsible for any taxes due as a result of this award. Release time will be given to the above-named teacher to attend the award ceremony, if selected.

Administrator \_\_\_\_\_ Position \_\_\_\_\_ Date \_\_\_\_\_

Attach this form to the top of your entry and mail an original and two copies of all material to:

Paul H. Mock  
Pacific Section AAPG  
c/o Chevron  
P.O. Box 1392  
Bakersfield, CA 93302

**Entries must be postmarked by March 1, 2001.**



***Deadline for the next issue:  
December 10, 2000***

Visit the Pacific Section AAPG  
web site:  
***<http://www.psaapg.org>***

**NEWSLETTER** of the Pacific Section  
of the American Association of Petroleum Geologists is  
published bi-monthly by the Pacific Section.

**Material for publication should be sent to:**

Cathie Dunkel  
Minerals Management Service  
770 Paseo Camarillo  
Camarillo, CA 93010  
catherine.dunkel@mms.gov  
805-389-7721

**Communications regarding advertising should  
be directed to:**

Larry Knauer  
knauelc@texaco.com  
661-392-2471

**Change of address, subscription, and  
membership inquiries should be directed to:**

Membership Chairman  
Pacific Section AAPG  
P.O. Box 1072, Bakersfield, CA 93302

**To order publications of the Pacific Section  
AAPG, write to:**

Publications Committee  
Pacific Section AAPG  
P.O. Box 1072, Bakersfield, CA 93302

***Pacific Petroleum Geologist Newsletter***  
Pacific Section AAPG  
P.O. Box 1072  
Bakersfield, CA 93302

**PACIFIC SECTION**

**American Association of Petroleum Geologists**

**2000-2001 OFFICERS**

President	<b>KAY PITTS</b> klpitts@aeraenergy.com; 661-326-5506
President Elect	<b>ALLEN BRITTON</b> corebak@ix.netcom.com; 661-392-8600
Vice President	<b>CYNTHIA HUGGINS</b> huggica@texaco.com; 661-392-2280
Secretary	<b>GEORGE STEWART</b> gestewart@aeraenergy.com; 661-665-5412
Treasurer	<b>HAROLD SYMS</b> harold.syms@mms.gov; 805-389-7710
Past President	<b>TERRY THOMPSON</b> thomptw2@texaco.com; 661-392-2464

**Newsletter Staff**

Incoming Editor	<b>CATHIE DUNKEL</b> catherine.dunkel@mms.gov; 805-389-7721
Outgoing Editor	<b>ALLEN BRITTON</b> corebak@ix.netcom.com; 661-392-8600
Advertising	<b>LARRY KNAUER</b> knauelc@texaco.com; 661-392-2471
Historical	<b>BILL RINTOUL</b> 661-324-0379
Geological	<b>FRANK CRESSY</b> 661-323-6828
<i>Associate Editors (from the affiliated geological societies):</i>	
Alaska	<b>GARY PELKA</b> pelkagj@bp.com; 907-564-5677
Coast	<b>MIKE BARMINSKI</b> mbarminski@aol.com; 805-644-3397
Los Angeles Basin	<b>DON CLARKE</b> doclark@ci.long-beach.ca.us; 562-570-3915
Northern California	<b>RON CRANE</b> roncrane@aol.com
Northwest	<b>DOUG SCHWARM</b> 503-603-6689
Sacramento	<b>JACK SMITH</b> jsmith@consrv.ca.gov; 916-322-1110
San Joaquin	<b>MARK WILSON</b> malw@chevron.com; 661-392-3047

**BULK RATE  
U.S. POSTAGE PAID  
BAKERSFIELD, CA  
PERMIT NO. 1163**