



PACIFIC PETROLEUM GEOLOGIST NEWSLETTER

of the Pacific Section
American Association of Petroleum Geologists

February & March 1989 No. 2

THE PRESIDENT'S COLUMN

I recently had the opportunity to attend "AAPG Day" at the national AAPG headquarters in Tulsa, Oklahoma. This was my first visit and I was very favorably impressed with both the physical facilities, and the very professional staff. The open house and presentation were attended by section and society representatives from all over the country, along with members of AAPG's numerous committees, plus current nominees for national officers. There were about fifty in all, plus assorted spouses.

Of particular interest among the numerous items discussed was the internationalization of AAPG, which is currently going on at the rate of 40% of incoming applications. This global trend is certainly being reflected in the membership and should lead to an increasing number of papers of international interest at our national meetings. Currently, about 20% of our national AAPG members reside outside the United States.

Incidentally, I was interested to learn that AAPG is recognized internationally for its complete library on petroleum geology. No other professional organization so dominates the literature of its science as does AAPG, probably because the science of petroleum geology and AAPG grew up together. AAPG is the world's largest geological publishing house.

Palm Springs

Things are about ready for us in Palm Springs. General chairman, Mike Mitchell and his dedicated staff have things well in hand for our May meeting. I know that some of you have been concerned about the potential attendance at this new venue, but we have most recently been getting very positive feedback from people as we have moved into 1989. I think the interest in visiting this "diamond in the desert" will continue to grow right up until convention time. See you there!

Jack West, President

PALM SPRINGS ANNUAL CONVENTION UPDATE

By now you should have received your convention packet with all the information on the pre and post convention field trips and short courses as well as the technical session and social events. Remember to send your pre-registration form in by April 3, 1989.

The events start on **Tuesday, May 9** with Short Courses #1 **Characterization of Heterogeneous Reservoirs** (\$200), #2 **Remote Sensing** (\$150), #3 **Paleomagnetism** (\$150), AAPG #1 **Practical Petrophysics** (\$370). All short courses are May 9 to 10, 1989.

On **Wednesday, May 10** scheduled events include: the field trips **SEPM #1 Algodones Dune** (\$100), and AAPG #2 **Heber Geothermal Field** (\$65), also included are the tennis and golf tournaments. Don't forget the Icebreaker from 6:00 to 9:00 p.m. that evening.

On **Thursday, May 11**, the technical sessions begin with SEPM: Ancient Carbonate Depositional Systems, Southwestern U.S.; AAPG: Environmental Concerns in the Petroleum Industry; SEPM: Conglomerates in Basin Analysis; and the Poster session. Spouse event is the aerial tramway trip.

Friday, May 12 is the last day of technical sessions with SEPM: Neogene Symposium; SEG: Case Histories and Interpretation; AAPG: Giant Oil Fields and Reservoir Characterization; SEPM: Conglomerates in Basin Analysis; SEG: Acquisition and Processing Developments; AAPG/SEPM/SEG/SPWLA: General Session and AAPG: New Frontier: Structure, Stratigraphy and Hydrocarbon Potential. Poster Sessions are scheduled for morning and afternoon. There is a fun run in the morning and spouses and alumni luncheons are planned. Also on Friday the **SEPM #3 Carbonate Field Trip to Southern Great Basin** begins (\$95 - note change in cost) which lasts until Sunday, May 14.

On **Saturday, May 13**, the last two field trips, AAPG: #4 **Palm Tree Structures in San Andreas Fault Zone** (\$60 - note change in cost) and SEPM: #5 **Application of Conglomerate Analysis, Sespe Formation** (\$40).

For more detailed descriptions and list of speakers please check your meeting announcement.

Judges are also needed so check the box on the registration form on the last page of the announcement.

Los Angeles

The following are upcoming LABGS meetings with the speakers scheduled to appear and the topics that they will discuss:

March 16 - Dr. Reed Glasman, UNOCAL, "Reservoir Characteristics of the Heather Field, North Sea".

April 20 - Dr. Bruce Luyendyk, UCSB, "Neogene Tectonics of California."

July 20 - John T. Ford, JPL, "Remote Sensing of Strike-Slip Faults in Eastern Mojave."

August 17 - John Cooper, Cal State Fullerton, "Marine Fluvial Clastics of Lower Cambrian, Eastern Mojave - Great Basin."

The meetings will continue to be held at noon at Luminaria's Restaurant in Monterey Park. For reservations or information, call Elaine Weed at (213) 894-3332 or Jim Grant at (213) 894-3197.

The newly elected officers for 1989 are: President, Allan Shareghi, MMS; Vice President-Secretary, Deborah Burdick, MMS; Program Chairman, Gary Beckerman, Unocal; Treasurers, Elaine Weed, MMS, and James Grant, MMS; Fieldtrip Coordinator, Harold Syms, MMS.

San Joaquin

The following are upcoming SJGS meetings:

March 14 - Bill Edmundson, Consultant, "Is There a Future for Exploration in the Sacramento Basin?"

April 11 - Bob Lindblom, Chevron, "The Denverton Creek Field".

May 9 - To be announced.

June 13 - Bonnie Bloesser, UCLA, "Sedimentology of the Caliente Range."

The meetings are held at the American Legion Hall at 2020 "H" Street in Bakersfield. Attitude adjustment starts at 6:00 p.m. and dinner is served at 7:00 p.m. For more information and reservations contact Larry Knauer at (805) 664-2324.

Suggestions for talks should be addressed to Bob Horton at (805) 664-3059.

Coast

The following are the upcoming meetings:

March 21 - Cathy Busby-Spera, University of California, Santa Barbara Professor; "Late Cretaceous Tectonism and Sedimentation in Baja California."

Meeting time is at 6:00 p.m., dinner at 7:00 p.m. at the American Legion Hall in Ventura. The address is 83 South Palm. For reservations please contact Susan Lewis at 805/656-7600 - Extension #192 or Lauren Irvine at 805/654-7032.

DAVIS & NAMSON Consulting Geologists

1545 North Verdugo Road, Room 09
Glendale, CA 91208 U.S.A.
(818) 507-6650

Petroleum Exploration, Seismic Risk,
Tectonics and Basin Studies, Balanced
Cross Sections (Courses & Consulting)

DR. THOM DAVIS

DR. JAY NAMSON

Alaska

The following is the tentative AGS program schedule for the remainder of the year:

March 23 - No speaker yet scheduled.

April 20 - James R. Steidtmann, University of Wyoming, AAPG Distinguished Lecturer, "Laramide Basin Subsidence and Basement Uplift in the Rocky Mountain Foreland".

May 25 - Dave Doherty, ARCO Alaska, Inc., "Everything You Wanted to Know about the Cook Inlet Petroleum Province".

All of the above are luncheon meetings scheduled at the Anchorage Westward Hilton Hotel in Anchorage.

Northern

The following are the upcoming NCGS meetings:

Late March/Early April - Naresh Kumar, Arco Alaska Inc., AAPG Distinguished Lecturer, "Development Geology of the Giant Fields on the Alaskan North Slope: Key to Successful Reservoir Management."

April - James Steidtmann, University of Wyoming, AAPG Distinguished Lecturer, "Laramide Basin Subsidence and Basement Uplift in the Rocky Mountain Foreland."

Call Millie Heim for reservations and information at (415) 422-4594.

Dr. Edward Teller, noted nuclear physicist, spoke on "The Greenhouse Effect" at a special NCGS meeting on January 10 and over 150 people attended.

RECENT MOVES

Alan Stevens from Tenneco to Occidental.

William Ade from Huffco to Occidental.

Gerald Nalewaik, formerly Consultant and previously with Exxon to Occidental.

Mike Cleveland transferred from Occidental de Colombia, Bogota to Occidental, Bakersfield.

Michael P. Dumont is moving from Chevron USA Inc., Western Region, as a paleontologist in San Ramon to ARCO Oil and Gas Geoscience Operations in Plano, Texas as a geologist.

A. D. Warren from Plano, Texas to Anchorage, Alaska with ARCO.

Paul Weimer from the University of Texas at Austin to Mobil Research in Dallas.

Randall Stashovsky from Ventura to Midland, Texas with Exxon.

Tetsui Tanaka from Englewood, Colorado to Minato-Ku, Tokyo, Japan with Nippon Exploration.

Gary E. Nulty from Cal Energy in Carmichael to NGC Energy in Concord.

Boyd S. Getz from San Ramon to Bakersfield with Chevron.

Steven A. Fields from Westminster to Ventura with the Division of Oil and Gas.

Jaff Auchterlonie from Bakersfield to Ventura with Texaco.

Wendy Klein from Bakersfield with Tenneco to Rocky Hill, New Jersey as a Consultant.

The Western Oil & Gas Association has changed its name to the Western States Petroleum Association.

NEW MEMBERS

SOUTHERN CALIFORNIA

David M. Courtis - UNOCAL, Pasadena; Blase Cilweck - Ojai; Nazila E. Hummer - Tehachapi; Chester L. Love - Bakersfield; Bruce E. Reiter - Bakersfield; Frank J. Cooper - Halliburton Logging, Bakersfield; Thomas W. Curran - Bakersfield; M. Scott Cranswick - Minerals Management Service, Los Angeles; Eric G. Nupen - Los Angeles; Margaret C. VanBuskirk - Sierra Madre; Jeff Basenberg - Fortune Petroleum, Agoura Hills; George Lockwood - Halliburton Logging, Ventura; Roberta R. Garza - Halliburton Logging, Bakersfield.

NORTHERN CALIFORNIA

James R. Baroffio - Chevron USA, Inc., San Francisco; William Cotton - Los Gatos; Robert L. Gimple - Chevron USA Inc., Sam Ramon.

DRILLING NOTES

Drilling has resumed in the world's deepest hole, the Soviet Union's SG-3 on the Kola Peninsula west of Murmansk. Originally targeted to 15,000 meters or 49,212 feet, the hole reached 39,586 feet in 1984 and had remained there until recently.

The well is now being deepened by ten to twelve meters per day. The rock structure of a core recovered from 12,000 meters differs little from those obtained at 6,000 and 8,000 meters.

SAN JOAQUIN WELL LOGGING SOCIETY

The Southern San Joaquin Well Logging Society is growing and we encourage you to join. We are serving our membership by providing publications, forums, and presentations related to formation evaluation. An increasing amount of talks are related to practical geologic topics.

Our goal at the local level is to increase exposure to innovation, interpretation and practical applications related to local problems. For information please contact Dave Del Mar, Santa Fe Energy, California Avenue, Bakersfield.

COMING EVENTS

March 14 to 15 - CIPA hosts Hazardous Materials and Air Regulatory Seminar to be held in Bakersfield. For more information contact Renee Carr (WZI Inc.) at (805) 326-1112.

April 3 - Pacific Section AAPG Preregistration Deadline.

April 5 to 7 - California Regional SPE Meeting, Bakersfield. For details contact Rod Eson, EPT, at (805) 325-2893.

April 21 - Annual API Golf Tournament and Barbecue (Bakersfield). Only API members can play. Reservations are being accepted March 13, 1989. For more information contact Mike McFadden, Pride Petroleum at (805) 399-0621.

April 23 to 26 - National AAPG Meeting in San Antonio.

May 1 - Application filing deadline for the geology registration exam. The test date for the exam is September 15, 1989. For more information contact The Geologists and Geophysicists Board of Registration at (916) 445-1920.

May 9 to 14 - Pacific Section AAPG-SEG-SEPM Annual Convention, Short Courses and Field Trips, Palm Springs, California.

June 3 to 6, 1990 - National AAPG Meeting, San Francisco.

July 29 to August 3, 1990 - Circum - Pacific Energy and Mineral Resources Conference, Honolulu.

CORE REPOSITORY

HELP! We need sample location data for the following: 1968-1969 Cal Drilling Program - DART samples taken offshore. 1968-1969 Missile Silo Program - Air Force looked at a pluton north of Fresno as a possible missile silo site. Several hundred feet of igneous rock were cored.

I received calls on all of the samples printed in the last issue. Someone out there must know where these rocks are from.

Larry Knauer, Curator

PACIFIC SECTION SEPM
OFFICERS FOR 1989

President

Pat Abbott
San Diego State University

President-Elect

Steve Bachman
Crouch & Bachman

Vice President

William J. M. Bazeley
ARCO Oil & Gas

Treasurer

David Berry
Cal Poly Pomona

Secretary

Robert Gray
Santa Barbara City College

Managing Editor, Publications

Rhinehart Suchland
Dekalb Energy

MMS DIRECTOR APPOINTED

Secretary of the Interior Donald Hodel has appointed Robert E. Kallman director of the Minerals Management Service. Kallman succeeds William Bettenberg who requested reassignment as MMS associate director for offshore minerals management.



MICROPALEO
CONSULTANTS, INC.

681 Encinitas Blvd. • Suite 312 • Encinitas, CA 92024 • Telephone (619) 942-6082

NEW PROPRIETARY STUDIES

CALIFORNIA COASTAL BASINS STUDY

WINTERS FM. & FORBES FM. STUDIES

WESTERN CANADIAN BEAUFORT SEA STUDY

N.E. ALASKA OFFSHORE WELL STUDIES

VOLUNTEER "SCIENTISTS" MAKE A DIFFERENCE

Seventy-one year old Charlie Foss has "taken the time to examine things," as he puts it. For more than fifty years, the World War II Army captain has worked as a geologist. His travels have taken him to Indonesia and Russia, and closer to home, he has explored the Four Corners states, New Mexico, Colorado, Arizona, and Utah, and worked in the Sacramento Valley.

Foss retired in 1980. But he wanted something to do. "Something with a direction," he says and pauses, "something to keep me busy." So when he was given to work as a Bureau of Land Management volunteer scientist, he couldn't resist.

Charlie's wife passed away four years ago. He has settled in Bakersfield and periodically takes in boarders. He is a member of several organizations including the American Association of Petroleum Geologists and the California Native Plant Society. He has served as a deacon in the Presbyterian church and is a grandfather.

The U. S. Bureau of Land Management's (BLM) Bakersfield office needed help. As the Federal agency charged with the technical evaluation of California's Federal mineral estate, it had a greater workload than its employees could handle. As a result, the Branch of Mineral Evaluation and Development (BMED) started the Volunteer Scientist Program to recruit volunteers. The agency was looking for experienced geologists to assist with research projects, and Foss fit right in.

Since November 1986, Charlie has assisted BLM in inventorying California mining districts. By analyzing collected data, he can determine where precious metals and petroleum deposits might be found. He does most of his work at home and has given the Bureau over 250 hours of his time and expertise.

When he isn't volunteering, you can find Foss hiking in the Greenhorn/Kern River area with a camera in his hands. "I try to teach people a little bit about geology," he says and smiles. "But I think they would rather hear about plants instead of rocks."

Graduate student Bill Robin wanted to hear all about rocks. Working towards a master's degree in geology at California State University, Bakersfield, he needed a "real life" project for his thesis.

That was over 300 volunteer hours ago. Bill jumped right in and began looking for a water well in Short Canyon. By slinging a sledge hammer at the ground and recording the resulting movements on a seismograph, he has been able to find water that BLM needs for its range improvement program.

"It was hot, it was dusty, and it was hard work. But I'll like it when I get my degree," he says.

He, too, is a part of the Volunteer Scientist Program that was the brainstorm of BLM Bakersfield's Minerals Branch Chief Del Fortner, and geologist Gregg Wilkerson. "We put out a call for help in a professional geology newsletter," says Fortner, "and the response was incredible. We received calls from as far away as England."

Over 5,800 hours of volunteer service has been donated since the program began in July 1986. The cost to the agency for travel expenses, purchasing data, and furnishing supplies has totalled just over \$53,000. In return, the BLM has received work valued at more than \$400,000.

"Volunteers have been instrumental to BLM studies," says Gary Walker, assistant district manager for minerals.

In the Caliente area, BLM is working towards a volunteer agreement to build an outdoor mining museum. In the Cuyama Basin, between Santa Maria and Bakersfield, students are conducting studies on oil potential.

Sara Johnson is 68 years young. "Retirement gets boring," she says matter-of-factly, describing herself as an "in-betweenner."

"I like to be told what needs to be done and then jump right in and do it."

Sara worked as a medical and legal secretary and was familiar with computers. She was looking for a challenging job and the Bureau's program offered just the challenge she wanted.

Over a four month stretch, she donated 30 to 35 hours a week entering scientific data into a computer system. "I guess I kinda got absorbed in it," she says. "Maybe obsessed is the right word."

Sara has had to give up her volunteer efforts temporarily. Her husband is ill. However, she says she would like to get involved again, possibly working on a computer at home. She has nothing but praise for BLM employees. "The crew was real helpful," she explains. "And it wasn't just because I was a volunteer. Everyone really worked as a team."

Charles Edwards has been a practicing geologist for 39 years. A graduate of the California Institute of Technology in Pasadena, he earned his master's degree in 1947. His list of accomplishments includes working as vice president and exploration manager for Camerina Petroleum Corporation in Texas, and he owned his own company. Jokingly he says he decided to retire in 1986, "because my wife had had enough."

But, Edwards has had a short-lived retirement. In February of 1987 he began volunteering in the scientist program, performing a detailed drainage study of Federal lands in the Delta Grass Valley in California. "I need space for my drafting tables and files," he explains. "Besides, Mrs. Edwards wants the house to look like a house."

Edwards has donated over 300 hours of his time to BLM. He has also given the Bureau his personal library of rock formation records worth in excess of \$10,000. "Geology has been good to me, and I want to give a little of it back." He encourages people to volunteer and plans to continue work on the drainage study at least one full day a week, "unless important things like fishing get in the way!"

BLM geologist Gregg Wilkerson says he is always looking for new volunteers. He spends his evenings visiting various clubs and organizations telling people about BLM's program. "I've educated myself to the types of people who like to volunteer," he explains. "I determine what they are interested in and then assign them tasks that will expand that interest."

Wilkerson says that while many volunteer projects are labor oriented, the volunteer scientist program is more technical in nature, involving geologists, engineers, and people who enjoy working with computers.

There are 16 volunteers currently involved in projects, donating an average of 530 hours a month. Thirty people have contributed time since the program began two years ago, each serving as a "scientist" under members of the BLM team.

Wilkerson believes that in the future volunteerism will not be a luxury, but instead a necessity. He intends to continue his recruiting efforts.

"For every hour of recruiting and training that I put in, BLM gets five hours back," he says. "I think that's pretty good."

*Tina Sibilsky
BLM Public Affairs*

SEVEN OF TOP TEN OIL FIELDS IN CALIFORNIA AND ALASKA

According to the Oil & Gas Journal, in its annual forecast/review issue the top ten fields and their outputs include Prudhoe Bay, Alaska, 576,335,000 barrels; Kuparuk River, Alaska, 112,055,000 barrels; South Belridge, 60,583,000 barrels; Midway-Sunset, 57,497,000 barrels; Kern River, 46,899,000 barrels; East Texas, 40,597,000 barrels; Elk Hills, 39,144,000 barrels; Yates, Texas, 33,540,000 barrels; and Wasson, Texas, 28,656,000 barrels.

Also included in the Tulsa publication are the top ten fields from the standpoint of oil left to produce. The list with each field's estimated remaining reserves includes Prudhoe Bay, 3,533,000 barrels; Kuparuk River, 994,945,000 barrels; East Texas, 988,758,000 barrels; Yates, 782,685,000 barrels; Kern River, 743,000,000 barrels; East Anschutz Ranch, Utah, 727,799,000 barrels; Elk Hills, 579,776,000 barrels; Wilmington, 495,633,000 barrels; South Belridge, 435,286,000 barrels; and Midway-Sunset, 373,863,000 barrels.

Bill Rintoul

PACIFIC SECTION AAPG MEMBERSHIP

The Pacific Section AAPG consists of seven affiliated local geological societies - Alaska, Northwest, Northern, Sacramento, San Joaquin, Coast, and Los Angeles Basin. When you join the Pacific Section AAPG you are assigned to a particular local geological society. The annual membership dues are \$10.00, \$2.00 of which is returned or rebated to local societies. The total amount of rebate that each local society receives depends upon the number of Pacific Section AAPG members in that society. Three of the local societies charge separate membership dues - Alaska, Northwest, and Northern. At times this causes some confusion because it is possible to join one of these local societies without becoming a member of the Pacific Section AAPG. Membership is also not a prerequisite for meeting attendance.

So what are the advantages of membership you may ask? The obvious advantages are the Pacific Petroleum Geologist Newsletter, the membership directory, local meeting notices, all Pacific Section notices, and convention notices. Less obvious is the support to local societies in which you participate.

As of December, 1988, Pacific Section membership in affiliated societies was as follows:

Alaska - 23
Northwest - 34
Northern - 134
Sacramento - 54
San Joaquin - 298
Coast - 209
Los Angeles Basin - 306
Others - 89
Total Membership - 1147

GEOLOGY OF SWITZERLAND, YUGOSLAVIA AND ITALY JULY 16 TO JULY 7, 1989

Highlights include the karst topography of Yugoslavia; Alpine tectonics, sedimentation, glaciation and landslides; Vaiont Dam; cograil to the Jungfrau; subsidence in Venice; Matterhorn; Carrara marble quarry; soil instability in Pisa; sculpture in Florence; pozzilin in Pouzzilin; Vesuvius and Pompeii; and Dubrovnik. The approximate cost is \$3,500. For more information please contact Dr. Dorothy L. Stout, Cypress College, Cypress, California 90630 - (714) 826-2220.

ATTENTION FIFTY YEAR PACIFIC SECTION AAPG MEMBERS

All Pacific Section members who have been members 50 years or more are invited to attend the Pacific Section Convention in Palm Springs, May 10 to 12, 1989. All such members attending the luncheon on May 11 will be recognized and introduced by the Luncheon Chairman.

The Convention Committee has organized an excellent program with interesting field trips and seminars.

Hope to see you there!

John Kilkenny

COGENERATION FLUIDS RECLASSIFIED BY THE DIVISION OF OIL AND GAS

Effective January 1, 1989, the State DOG reclassified cogeneration fluids from Class V to Class II.

The reclassification system is as follows:

Cogeneration Plant Fluids - Waste brine is now designated Class II regardless of whether it results from generation by conventional generators or by cogeneration. Additionally, de-ionized water, backwash water and evaporative cooling water blow-down, produced by cogeneration, have also been reclassified as Class II. These fluids meet the Class II criteria if they are produced or used on-site; used for oil production purposes and are non-hazardous. Reclassification of mud filtrate is based on the same criteria as above.

SACRAMENTO BASIN — (Studies completed and in progress)

- Winters Formation
- Paleogene "Gorges" (Martinez and Meganos Fm)
- Stratigraphic Framework
- Structural Framework/Midland Fault
- Field Studies

NORTH SAN JOAQUIN BASIN —

- Tracy Sd.
- Blewett Sd.

LIVERMORE —

- Domingine

EXPLORATION AND PRODUCTION SERVICES

(213) 945-7607
P.O. BOX 4733
WHITTIER, CA 90607

MESA VERDE

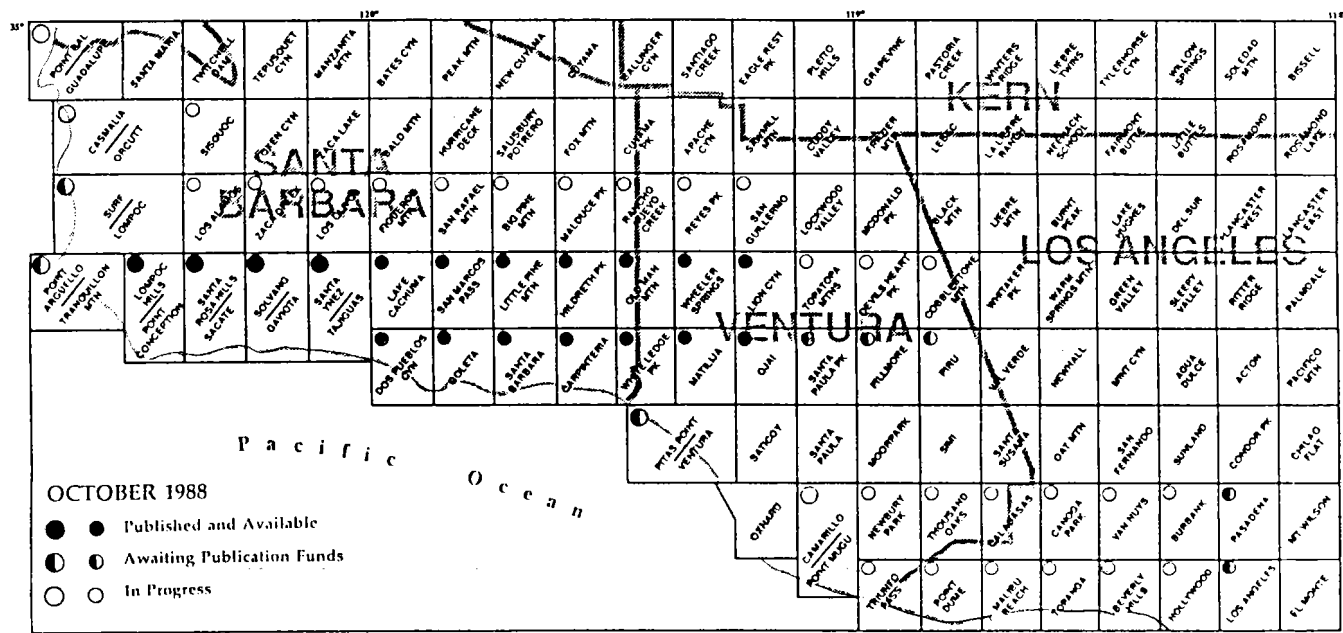
T. W. DIBBLEE, JR. GEOLOGIC MAPS

The Dibblee Geological Foundation has delegated the automatic mailing and special order distribution of Dibblee Geologic Maps to the Los Padres Interpretive Association, also a non-profit organization. The maps are \$10.00 per copy, folded in either full color or black and white. Rolled maps are an additional \$1.00. To order maps, send payment with your name and address to Los Padres Interpretive Association, in care of E. R. Blakley, 958 Isleta Avenue, Santa Barbara, California 93109.

The published and available maps are:

Lake Cachuma - 83, San Marcos Pass - 84, Little Pine Mountain - 85, Hildreth Peak - 86, Old Man Mountain - 87, Wheeler Springs - 88, Lion Canyon - 89, Ojai - 97, Matilija - 98, White Ledge Peak - 99, Carpinteria - 100, Santa Barbara - 101, Goleta - 102, Dos Pueblos Canyon - 103, Santa Ynez/Tajiguas - DF15, Gaviota/Solvang - DF16, Santa Rosa Hills/Sacate - DF17, Lompoc Hills/Point Conception - DF-18.

INDEX MAP OF DIBBLEE GEOLOGIC MAPS



Based on enthusiastic response received from the geological community throughout Southern California, the Dibblee Geological Foundation has committed its resources to the publication of the Santa Monica Mountains Series, comprising sixteen 7 1/2 minute geologic quadrangles in Los Angeles and Ventura counties shown in the southern portion of the index map. Mapped and compiled by Thomas W. Dibblee, Jr., this map series represents a clear and consistent synthesis of the regional stratigraphy and structure from which to unravel the intricate details of Santa Monica Mountains Geology.

Publication of the Los Angeles and Pasadena quadrangles is well underway; startup funds for drafting and color preparation were generously donated by individuals and firms which will be acknowledged as major contributors on the maps. Although the Foundation is able to publish full-color geologic maps at a small fraction of what it costs state and federal agencies to do the same, it still costs over \$7,000 per map, and additional support is needed and hereby solicited so that we can publish these maps by early 1989.

We would greatly appreciate your financial support of this project in any amount. It is not too late for your or your organization to become, and be acknowledged as, a major sponsor of any of these maps with an individual contribution of \$500 or a corporate donation of \$1,000 or more, per published map.

Helmut Ehrenspeck, Editor
Dibblee Geological Foundation

OREGON DEPARTMENT OF GEOLOGY AND MINERAL INDUSTRIES PUBLICATIONS

Geology and Geothermal Resources of the Breitenbush-Austin Hot Springs Area, Clackamas and Marion Counties, Oregon; edited by D. R. Sherrod (USGS). DOGAMI Open File Report 0-88-5, \$5.00

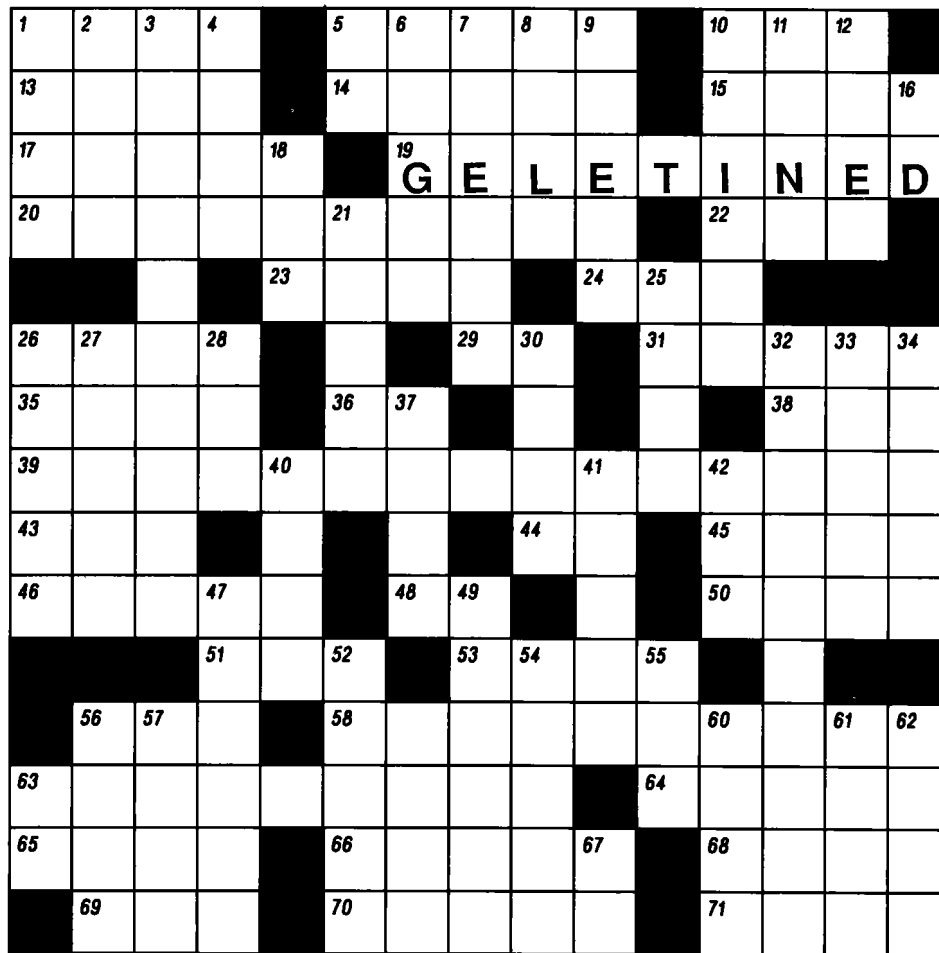
Geologic Map of the McKenzie Bridge Quadrangle, Lane County, Oregon; by G. R. Priest, G. L. Black, and N. M. Woller (DOGAMI) and E. M. Taylor (OSU), Map GMS-48, \$8.00

A Description of Some Oregon Rocks and Minerals (Second Revision), by L. L. Brown (U. S. Bureau of Mines, Albany), \$5.00

Geology and Mineral Resources Map of the Owyhee Ridge Quadrangle, Malheur County, Oregon; by M. L. Ferns (DOGAMI), Map GMS-53, \$4.00

Publications are available from the Oregon Department of Geology and Mineral Industries, 910 State Office Building, 1400 SW Fifth Avenue, Portland Oregon 97201-5528. Orders under \$50.00 require prepayment.

GEO-QUIZ

HORIZONTAL

1. Geology Group
5. 24th Greek Letter
10. Atomic Energy Commission (abbr.)
13. Dull Pain
14. Of the Crown
15. Actor's Part
17. Fraternity Trick
20. Forbes Sand Description
22. Compass Point
23. Covering
24. Definite Article
26. "_____" Tora! Tora! (movie title)
29. Part of Tender Loving Care (abbr.)
31. Beer at its Best
35. "How Sweet _____"
36. Kipling Poem
38. Radio Corporation of America (abbr.)
39. "Hot Spot" for Geologists in Palm Springs
43. Seattle Mountaineering Store
44. Indefinite Article
45. Drying Chamber
46. Electrically Discharged
48. Military Police (abbr.)
50. _____ in the Shade
51. United States Ship
53. Weeded
56. Public Utilities Commission (abbr.)
58. (Fe, Mn) Wo4
63. Seafood Fare
64. Facial Hair
65. Protruding Rock
66. Wise One
68. Catch
69. Approved Expenditure (abbr.)
70. Song of Joy
71. Eye Inflammation

VERTICAL

1. Landmans Group
2. Land Measure
3. Coarse Grained
4. Fellow
5. "To Be _____ not . . ."
6. Ski Run Bump
7. Grommet
8. Festive Affair
9. Quick
10. Ascended
11. Geologic Time Units
12. Evidence (var.)
16. TV's "Mr. _____"
18. _____ Carson
21. Of a City
25. Armstrong Instrument
26. Crown
27. California Aquatic Mammal
28. Mt. St. Helens Residue
30. Extrusive Volcanic
32. Three Degrees of Freedom
33. Female Student
34. Smooth, Waxy, Lustrous Fabric
37. Structure
40. Finishes
41. Come Into
42. Dibblee, Baldwin, or Hopps
47. Card Game
49. Mucus
52. Rustling Skirt Sound
54. Frequently
55. Touch Lightly
56. Type Measure
57. United States Air Force (abbr.)
59. Bull Fight Cheer (var.)
60. Untidy
61. Serving a Platter
62. Border
63. Float Shoe (abbr.)
67. Subsea (abbr.)

Answers will appear in the
next Newsletter

Thanks to Paul Hacker

RECOMMENDED READING

U. S. GEOLOGICAL SURVEY

B-1576: Geologic Setting of Gold Occurrences in the Big Canyon Area, El Dorado County, California, by R. L. Earhart, \$1.00

B-1855: Historical Unrest at Large Calderas of the World, by C. G. Newhall, and Daniel Dzurisin (two volumes), \$34.00

C-1003: COGEOMAP: A New Era in Cooperative Geologic Mapping, by Juergen Reinhardt, and D. M. Miller (reprint), Free

C-1018: Proceedings of the 1987 Exclusive Economic Zone Symposium on Mapping and Research; Planning for the Next Ten Years, Edited by Millington Lockwood, National Oceanic and Atmospheric Administration, and B. A. McGregor, U. S. Geological Survey, 1988, 175 pages, Free

I-1091-G: Map Showing Distribution, Composition, and Age of Late Cenozoic Volcanic Centers in Hawaii, by R. G. Luedke, R. L. Smith, 1988, \$3.60

I-1156: Geologic Map of East-Central Santa Monica Mountains, Los Angeles County, California, by R. F. Yerkes, and R. H. Campbell, 1980 (reprint 1988), \$3.10

I-1807: Geologic Map of the Katchikan and Prince Rupert Quadrangles, Southeastern Alaska, by H. C. Berg, R. L. Elliott, and R. D. Koch (supersedes Open Filed Report 78-73-A), \$3.10

I-1952: Geologic Framework, Petroleum Potential, and Field Locations of the Sedimentary Basins in China, by K. Y. Lee, and C. D. Masters, \$5.50

MF-1818: Interpretive Aeromagnetic Map of the Eagle Mountains Wilderness Study Area, Riverside County, California, by V. J. S. Grauch, \$1.50

MF-2016: Geologic Map of the Redmond Quadrangle, King County, Washington, by J. P. Minard and D. B. Booth, \$1.50

MINERALS MANAGEMENT SERVICE

1340 West Sixth Street, Los Angeles, California 90017

Pacific Summary/Index: June 1, 1986 to July 31, 1987. Outer Continental Shelf Oil and Gas Activities. MMS 87-0078: OCS Information Report

Lucy Birdsall

CORRECTION TO PREVIOUS NEWSLETTER

"Studies of the Geology of the San Joaquin Basin", SEPM, \$24.00 should be ordered from Treasurer, Pacific Section SEPM, Post Office Box 10359, Bakersfield, California 93389.

NEWSLETTER

Pacific Section A.A.P.G.
P. O. Box 1072
Bakersfield, CA 93302

FORWARDING AND RETURN POSTAGE GUARANTEED

PACIFIC SECTION - AMERICAN ASSOCIATION OF PETROLEUM GEOLOGISTS

OFFICERS 1987 - 1988

President JACK H. WEST
(805) 321-6040
President Elect BEN CAHILL
(916) 452-7541
Vice President JACK CUNNINGHAM
(805) 658-8451
Secretary BILL LONG
(805) 321-6041
Treasurer PAUL HACKER
(818) 884-4071
Past President DAN E. PASQUINI
(805) 991-0526

Newsletter Staff

Co-Editors LAURA BAZELEY
(805) 326-1112
JUDY RUSSELL
(805) 321-6197

Historical BILL RINTOUL
Legislation TOM WRIGHT

Associate Editors

Alaska MARCIA MATTHIEU
(907) 263-4675
Coast AKBAR SHERIFF
(805) 656-7600
Los Angeles Basin ALLAN SHAREGHI
(213) 894-3052
Northern California JASON DONCHIN
(415) 548-4604
Pacific Northwest BILL COVERT
(503) 644-3316
Sacramento VERN BENNETT
(916) 489-2333
San Joaquin BOB HORTON
(803) 833-3059
Recommended Reading... LUCY E. BIRDSALL
(818) 244-5117

NEWSLETTER of the Pacific Section - American Association of Petroleum Geologists Newsletter is published bimonthly by the Pacific Section. Material for publication, requests for previous copies, and communications about advertising costs should be addressed to JUDY RUSSELL, P. O. BOX 1072, BAKERSFIELD, CA 93302.

CHANGE OF ADDRESS, subscription, and membership inquiries should be directed to: MEMBERSHIP SECRETARY, PACIFIC SECTION AAPG, P. O. BOX 1072, BAKERSFIELD, CA 93302.

PUBLICATIONS COMMITTEE: Pacific Section - American Association of Petroleum Geologists, P. O. Box 631, Ventura, CA 93302.

**DEADLINE FOR
APRIL/MAY
ISSUE
MARCH 31, 1989**

**BULK RATE
U.S. POSTAGE PAID
BAKERSFIELD, CA
PERMIT NO. 1163**



PACIFIC PETROLEUM GEOLOGIST NEWSLETTER

of the Pacific Section
American Association of Petroleum Geologists

April & May 1989 No. 3

ELECTION ISSUE

THE PRESIDENT'S COLUMN

Have you noticed that the last couple of national AAPG technical programs have included sessions entitled "Best of SPE"? I for one welcome this continuation of the cross-pollination process between disciplines within the petroleum industry. For years we have met jointly with our cohorts the geophysicists (SEG), and more recently with the log analysts (SPWLA). As geologists we have recognized the need to learn more about, and keep current with these closely related sciences.

Still, the petroleum engineers (SPE) and geologists have tended to remain apart, except for those of us who have chosen (or otherwise) to become involved with development or production geology. Now we are finding that there is a general need to learn more about the application of engineering principles to the subject of petroleum geology, as more of us have become involved in development work. So we have begun to have selected SPE papers in AAPG technical programs, and likewise, the SPE has begun incorporating selected AAPG papers into their national programs.

I would like to see this happen at our next Pacific Section convention in 1991 (due to the national AAPG meeting in San Francisco in June of 1990, we will not be having another Pacific Section get-together until the following year). With this in mind, Jack Cunningham, Bob Lindblom and I will have attended the SPE California Regional meeting in April by the time you read this. Our objective is to begin identifying papers that we want to bring to you in 1991. It can only benefit us all.

How about this wonderful slate of Pacific Section officer candidates in this issue. We are fortunate to have such capable people who are willing to pitch in and work for our combined benefit. Thanks guys and gal.

One final note. The required annual general meeting will be held in conjunction with our Executive Committee meeting at 1:30 p.m. on June 20, 1989 at Unocal's office (2323 Knoll Drive) in Ventura. This is your chance to bring up any subject that you feel should be addressed by the Pacific Section AAPG. Please let me know before hand if you plan to attend so that we can provide seating (805/321-6040).

Jack West, President

PACIFIC SECTION AAPG ELECTION

The slate of Candidates for office in the Pacific Section American Association of Petroleum Geologists are chosen by the Nominating Committee which is headed up by the past President. Dan Pasquini has completed his responsibility with the list of candidates below:

President-Elect

Jack Cunningham
Reinhard Suchsland

Vice-President

Wallace A. Jensky II
John W. Randall

Secretary

Rick Bowersox
Allan Shareghi

Treasurer

Marty J. Hall-Burr
Robert H. Sterling

Brief resumes of each candidate are presented on pages four and five. The President for next year is Ben Cahill.

Ballots will be mailed during the month of May.

PACIFIC SECTION AAPG-SEG-SEPM ANNUAL CONVENTION IN PALM SPRINGS

This is the final update on the 1989 Annual Convention to be held in the Palm Springs Convention Center. By the time you read this you should have sent your pre-registration and getting ready to pack for the meeting. The last newsletters gave updates on the field trips, short courses and technical sessions planned. Dates for the meeting are May 9 through 14, 1989. The Convention Chairman this year is Mike Mitchell (213/698-0081).

Exhibitor spaces are filling up and registrations are coming in. We plan to honor our fifty year members at the luncheon. Be sure to tell these guys that they are appreciated if you see them at the convention.

The 1989 Van Couvering Awardees will be presented at the convention in Palm Springs to the following students:

Robert Hobbs, University of Southern California
Geoff Saldivar, University of Southern California
Charles Hatten, Jr., California State, Los Angeles
Justin Brown, California State, Los Angeles
Tom Echols, University of California, Riverside
Umur Bozkurt, University of California, Riverside
Bernard Sentianin, San Diego State University
Bill Zempolich, California State, Fullerton
Durham Burnewi, California State Polytechnic, Pomona

A student will also be picked by the SEG to receive the award.

Los Angeles

The following are upcoming LABGS meetings with the speakers scheduled to appear and the topics that they will discuss:

April 20 - Dr. Egill Hauksson, USC, "New Perspectives on Thrust Faulting in the Los Angeles Basin."

May 18 - Dr. Ray Ingersoll, UCLA

June - No meeting.

July 20 - John T. Ford, JPL, "Remote Sensing of Strike-Slip Faults in Eastern Mojave."

August 17 - John Cooper, Cal State Fullerton, "Marine Fluvial Clastics of Lower Cambrian, Eastern Mojave - Great Basin."

The meetings will continue to be held at noon at Luminaria's Restaurant in Monterey Park. For reservations or information, call Elaine Weed at (213) 894-3097 or Jim Grant at (213) 894-7404.

DAVIS & NAMSON Consulting Geologists

1545 North Verdugo Road, Room 09
Glendale, CA 91208 U.S.A.
(818) 507-6650

Petroleum Exploration, Seismic Risk,
Tectonics and Basin Studies, Balanced
Cross Sections (Courses & Consulting)

DR. THOM DAVIS

DR. JAY NAMSON

San Joaquin

The following are upcoming SJGS meetings:

May 9 - Scott Hornafius, Mobil, "Facies Analysis of the Monterey Formation, Northern Santa Barbara Channel."

June 13 - Bonnie Bloesser, UCLA, "Sedimentology of the Caliente Range."

No meetings are scheduled for July and August. The meetings are held at the American Legion Hall at 2020 "H" Street in Bakersfield. Attitude adjustment starts at 6:00 p.m. and dinner is served at 7:00 p.m. For more information and reservations contact Larry Knauer at (805) 664-2324.

Suggestions for talks should be addressed to Bob Horton at (805) 664-3059.

Coast

The following are the upcoming meetings:

May - No meeting scheduled.

June - To be announced.

July - To be announced.

August - Wine Tasting/Field Trip of Santa Ynez - Santa Maria area. Exact date to be announced, look for upcoming information.

Meeting time is at 6:00 p.m., dinner at 7:00 p.m. at the American Legion Hall in Ventura. The address is 83 South Palm. For reservations please contact Susan Lewis at 805/656-7600 - Extension #192 or Lauren Irvine at 805/654-7032.

Northern

The following are the upcoming NCGS meetings:

April 11 - James Steidtmann, University of Wyoming, AAPG Distinguished Lecturer, "Laramide Basin Subsidence and Basement Uplift in the Rocky Mountain Foreland."

May - Don DePalo, Lawrence Berkeley Lab, "Strontium Isotope: Evolution of Seawater and Dating Technique."

Call Millie Heim for reservations and information at (415) 422-4594. No meetings are scheduled for July and August.

Alaska

The following is the tentative AGS program schedule for the remainder of the year:

April 20 - James R. Steidtmann, University of Wyoming, AAPG Distinguished Lecturer, "Laramide Basin Subsidence and Basement Uplift in the Rocky Mountain Foreland."

May 25 - Dave Doherty, ARCO Alaska, Inc., "Everything You Wanted to Know about the Cook Inlet Petroleum Province".

All of the above are luncheon meetings scheduled at the Anchorage Westward Hilton Hotel in Anchorage.

Northwest

The Northwest Petroleum Association's fifth annual symposium will be at Leavenworth, Washington on May 18 through 20, 1989. The hydrocarbon potential of the Columbia Basin, Oregon and Washington will be addressed with emphasis placed on potentially productive Eocene and Oligocene sediments underlying the Columbia River Basalts. One day of technical paper presentation and two days of field trips in the Chiwaukum graben and Roslyn "basin" are scheduled.

For additional information please contact Phil Brogan at 1426 NW Harmon Boulevard, Bend, Oregon 97701, (503) 382-0560.

RECENT MOVES

Robert Garza from Halliburton to Gary Drilling in Bakersfield.

Paul Hacker and Robert Hacker have moved their office from Woodland Hills to Bakersfield. Their new address is 3213 Fairhaven Drive, Building One. Their new telephone number is 805/325-1451.

Paul Herrera has moved his office from Woodland Hills to Bakersfield. The new address is 3213 Fairhaven Drive, Building One.

Colynn Blubaugh has moved from Anchorage, Alaska to Denton, Pennsylvania.

Stephen Hamm of ARCO International has moved from Los Angeles to Plano, Texas.

Courtney Isselhardt with Texaco has moved from Bakersfield to Ventura.

James Jacobs has moved from Houston, Texas to Larkspur, California.

David Salter with Chevron has moved from Camarillo, California to Ventura.

Michael Trapesonian has moved from Houston, Texas to North Hollywood.

AWG SELECTS 1989 NATIONAL BOARD

President: Marilyn J. Suites, AGI, geologist; Vice President: Suzanne Takken, Olanda Enterprises, President; Secretary: Selena Billington, U. S. Bureau of Mines, geophysicist; Treasurer: Catherine Gavigan, John S. Herold, Inc., Vice President; Editor: Virginia Murphy Saud, Kent State University, Associate Professor of Geology.

NEW MEMBERS

SOUTHERN CALIFORNIA

Michael Guzan - Sun Exploration & Production, Valencia; **John Lindquist** - Los Angeles; **Michelle Weis** - Unocal, Ventura; **Richard L. Coffman** - Getty Conservation Institute, Marina Del Rey; **Halina W. Duda** - Hershey Oil, Pasadena; **David M. Bernal** - Santa Barbara; **Rand Cantrell** - Bakersfield; **Guillermo Houghton** - Mobil Oil, Bakersfield; **Nancy Houghton** - Bakersfield; **Dennis M. Giovannetti** - ARCO Oil and Gas, Bakersfield; **William T. Fedewa** - ARCO Oil and Gas, Bakersfield

OTHER STATES

Douglas Hollett - Marathon, Houston, Texas; **James Vogel** - Exxon, Midland, Texas; **Jim Reid** - Exxon USA, Houston, Texas

CORE REPOSITORY

HELP! We need sample location data for the following:

Alex Homan
Gill #1
Humble
#119
Adams #1
Dobbins Unit #1
Dollie #1
Leavitt #1
Anne Newlon #1
Spangles #1
Steven McCulloch #1
Jade Oil
Capitol #1
Kadane
St. Fontanae #1
Korden
Unit 1-20

If you have any information please call (805) 664-2324.

Larry Knauer, Curator

COMING EVENTS

May 1 - Application filing deadline for the geology registration exam. The test date for the exam is September 15, 1989. For more information contact The Geologists and Geophysicists Board of Registration at (916) 445-1920.

May 9 to 14 - Pacific Section AAPG-SEG-SEPM Annual Convention, Short Courses and Field Trips, Palm Springs, California.

May 18 to 20 - Northwest Petroleum Association Symposium. For more information contact Phil Brogan at (503) 382-0560.

May 20 - NCGS Spring 1989 Field Trip to Point Reyes. Field trip leader is Bruce Bilodeau with Chevron. For information call Bruce at (415) 842-3068.

June 3 to 6, 1990 - National AAPG Meeting, San Francisco.

July 9 to 19 - 28th International Geological Congress, Washington D.C. For more information call IGC at (918) 584-2555.

July 29 to August 3, 1990 - Circum - Pacific Energy and Mineral Resources Conference, Honolulu.

CALL FOR PAPERS SAN ANDREAS FIELD TRIP AND GUIDEBOOK

The South Coast Geological Society's Fall 1989 field trip will be along the **San Andreas Fault** from the vicinity of Cajon Pass into the Carrizo Plain. Exact dates have not been determined yet, but will probably be in the last half of October. We are asking for papers for the guidebook which will be published for the trip. Topics of the papers submitted need not be confined to the area of the fault covered by the field trip. Deadline for submission of papers is **August 15, 1989** and they should be sent to Joan Baldwin, South Coast Geological Society, Post Office Box 10244, Santa Ana, California 92711. Call Joan Baldwin at (714) 839-8664 (or (213) 715-3368) or John Foster at (714) 727-3223 for further information.

UCSB ANNUAL RESEARCH REVIEW

The Department of Geological Sciences at the University of California, Santa Barbara is pleased to announce their seventh Annual Research Review scheduled for Sunday, June 11 through Tuesday, June 13, 1989.

This year they will conduct a two-day field trip to Santa Cruz Island which will include transportation to the island aboard the vessel CONDOR, steaming around the perimeter of part of the island, a visit to Painted Cave, and two jeep excursions to see the geology. They can accommodate up to forty people on the boat and island excursions and anticipate that the trip will be over-subscribed. Acceptance will be on a first come, first served basis. They are offering an alternate trip on Monday, led by Dr. Hopson, to the spectacular exposed ophiolite sequence at Point Sal.

The program for the Review session on Tuesday will include a series of morning talks highlighting departmental research, a poster session featuring graduate and faculty research programs in the afternoon, and dinner with a keynote address in the evening.

For more information contact Jim Boles at (805) 961-3719 or Maria Perez at (805) 961-4688.

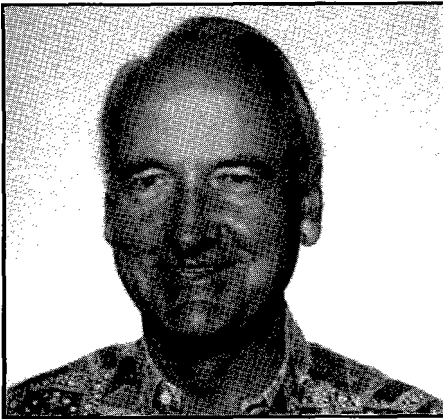
LETTER TO THE EDITOR

Rumor has it that Monterey Bay Geological Society may swing another field trip this year. The idea is to visit the site of the U.S.G.S. "Parkfield Experiment". If that can be arranged I'm told that it will be absolutely imperative that the Friday night session be at Pozzi's Stampede in King City. This is being passed along as a warning so that enough oilies might attend to counteract whatever mischief might be created by the academics, the givernmental types, and the site specific engineering geologists. Maybe we can even get Namson or Davis or Medwedeff to show us a fault-bend fold in outcrop.

Edward A. Gribi, Jr., Geologist

NOTE: For more information contact Ed Gribi at (408) 385-6164.

CANDIDATES FOR OFFICE - PACIFIC SECTION AAPG



JACK CUNNINGHAM, Candidate for President Elect

Present Position:

Consultant, Fortune Petroleum, Agoura Hills

Education:

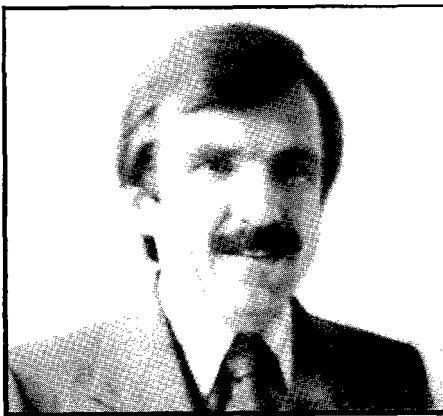
1952: UCLA, B.A. Geophysics

Employment:

1952 - 1976: Chevron U.S.A., Geologist; 1976 - 1984: Husky Oil Company, Manager of Exploration and Development, California and Oregon, Santa Maria, California; 1984 - 1987: Celeron Oil & Gas Company, Manager of Exploration and Development, West Coast, Santa Barbara, California

Professional Activities:

Active Member, National AAPG; Member, House of Delegates; California Certified Geologist #2776; General Chairman, Pacific Section, AAPG, Annual Convention, Santa Barbara, California, 1988; Vice President, Pacific Section AAPG



REINHARD SUCHSLAND, Candidate for President Elect

Present Position:

District Geologist, DEKALB Energy Company, Bakersfield

Education:

1969, California State University, Northridge, B.S. Geology; 1979, USC, M.S. Geology

Employment:

1970 - 1980: Texaco, Inc., Los Angeles, Geologist; 1980 - Present: DEKALB Energy Company, Bakersfield District Geologist

Professional Activities:

Member, Pacific Section AAPG, SEPM, SEG, National AAPG; Treasurer, Pacific Section SEPM in 1978; Managing Editor, Pacific Section SEPM in 1979 to present; Printing Chairman of 57th Annual Pacific Convention, Anaheim in 1982, Treasurer, SJGS in 1986, Technical Program Chairman and Program Editor, 61st Annual Pacific Section Convention, Bakersfield in 1986 and co-authored Forbes paper, Honorary Member, Pacific Section SEPM in 1986; President-elect, SJGS in 1987, President, SJGS in 1988, House of Delegates, National AAPG representing SJGS in 1989



WALLACE A. JENSKY II, Candidate for Vice President

Present Position:

Senior Geologist, Dames & Moore

Education:

1971, SDSU, B.S. Geology; 1974, UCSB, M.A. Geology

Employment:

1972: Humble Oil & Refining Company, New Orleans, Geologist; 1973 - 1980: Exxon Company, USA, Houston and Los Angeles, Exploration and Production Geologist; 1980 - 1986: Argo Petroleum, Santa Monica, Manager of Exploration; 1987 - Present: Dames & Moore, Santa Barbara and Los Angeles, Environmental Geology

Professional Activities:

Coast Geological Society, Past President; Cal-Section AIPG, Past President; Pacific Section AAPG, 1988 Convention Committee Chairman; DPA Committee Chairman, 1988 Pacific Section Convention



JOHN W. RANDALL, Candidate for Vice President

Present Position:

Division Development Geologist, Chevron USA, Southern California Division, Ventura

Education:

1967, Southern Illinois University, B.S. Geology; 1970, Southern Illinois University, M.S. Geology

Employment:

1970 - 1977: Union Oil Company, Exploration Geology, Santa Fe Springs and Bakersfield; 1977 - 1985: Gulf Oil Company, Exploration, Regional Geologist, Area Production Manager, Bakersfield; 1985 - Present: Chevron USA

Professional Activities:

Pacific Section AAPG Newsletter Editor in 1981 to 1984; SJGS Vice President 1985 to 1986; President-elect in 1988 to 1989; SJGS Symposium Chairman in 1988

CANDIDATES FOR OFFICE - PACIFIC SECTION AAPG



RICK BOWERSOX - Candidate for Secretary

Present Position:

Geological Manager, Mission Resources

Education:

1973, San Diego State, B.S. Geology; 1974, San Diego State University, M.S. Geology

Employment:

1975 - 1978: Getty Oil Company, Bakersfield, Geologist; 1978 - 1983: Getty Oil Company, Bakersfield, San Joaquin and Taft Districts, Lead Geologist; 1983 - 1984: Getty Oil Company, District Geologist; 1984 - 1985: Texaco, Inc., District Geologist; 1985 - Present: Mission Resources

Professional Activities:

Pacific Section AAPG/SJGS; AAPG, SPWLA, AIPG, California Registered Geologist, API San Joaquin Chapter; Field Trip Committee, Pacific Section AAPG Annual Convention, Bakersfield, 1977; General Chairman, Pacific Section AAPG Annual Convention, Bakersfield, 1986; Delegate to AAPG from SJGS in 1987-1988; Session Chairman, AAPG Annual Convention, Los Angeles, 1987



ALLAN SHAREGHI, Candidate for Secretary

Present Position:

Geologist, Minerals Management Service

Education:

1979, Memphis State University, B.S. Geology; 1981, Memphis State University, M.S. Geology

Employment:

1981 - 1983: Cities Service Oil & Gas, Geologist, Houston; 1983 - 1984: Reservoirs Inc., Geologist, Houston; 1984 - Present: MMS, Pacific OCS Region, Los Angeles, Geologist/Geophysicist

Professional Activities:

AAPG, Pacific Section AAPG, LABGS Treasurer in 1987; Vice President/Program Chairman LABGS in 1988; President of LABGS in 1989; Ice Breaker Chairman, Pacific Section AAPG Meeting, Palm Springs, California in 1989



MARTY J. HALL-BURR, Candidate for Treasurer

Present Position:

Geologist, Union Oil International

Education:

1976, California Lutheran College, B.S. Geology; 1979, Northern Arizona University, M.S. Geology

Employment:

1979 - 1980: Geologist, Phillips Petroleum Company; 1980 - Present: Unocal

Professional Activities:

LABGS Vice President and President; AAPG Convention, Tobin Theatre Chairman; Pacific Section AAPG, Short Course Chairman in 1989; LABGS/AAPG House of Delegates Member



ROBERT H. STERLING, Candidate for Treasurer

Present Position:

Vice President of Exploration, Nahama & Weagant Energy Company, Bakersfield

Education:

1979, California State Poly Technical University, Pomona, B.S. Geology

Employment:

1979 - 1980: Research Geochemist, Naval Ocean Systems Center, San Diego; 1980 - 1983: Exploration Geologist, Argo Petroleum, Santa Monica; 1983 - 1985: Exploration Geologist, Challenger Minerals, Bakersfield; 1985 - 1986: District Geologist, Challenger Minerals, Bakersfield; 1986 - 1987: Consulting Geologist, Bakersfield; 1987 - Present: Nahama & Weagant Energy Company

Professional Activities:

Treasurer, San Joaquin Geological Society in 1988 to 1989, California Geologist #4266

SCAQMD: CLEAN AIR PLAN WEIGHS HEAVILY ON OIL INDUSTRY

A far-reaching twenty year plan was approved by the directors of the South Coast Air Quality Management District and the Southern California Association of Governments March 17, 1989, that would, if implemented, require major industry and lifestyle changes in Southern California.

The first phase of the plan, which includes some 120 provisions, would require : strict refinery emissions controls, buses and rental car fleets to begin conversion to methanol and other "cleaner" fuels, reformulation of aerosol hair sprays and new methods for applying paints and solvents - - all within the next five years.

By 1998, the plan is expected to force forty percent of cars, seventy percent of freight vehicles and all buses off of gasoline.

Within twenty years, the plan would have all vehicles converting to electricity, solar power or other new technologies.

COMMITTEE ON THE SOLID EARTH SCIENCES

The National Research Council has established a committee under the Board on Earth Sciences and Resources to undertake a critical assessment of the state of our knowledge of the basic and applied solid-earth sciences.

A report will be issued which will review the current solid-earth sciences in order to assess recent advances:

- identify emerging lines of research promise,
- identify and address key scientific and societal issues,
- identify and assess directions, changes, and contributing factors,
- recommend long and short range research priorities,
- research policy options,
- opportunities for increased effectiveness,
- roles for government, academia, and industry.

The report is intended to serve as a blueprint for the solid-earth sciences in the next decade and beyond. In recommending priorities, it will provide guidance for cooperative efforts in addressing the most promising lines of research with the funds available in changing budgetary climates.

The document will be issued in 1989, the year of the 28th International Geological Congress, to be hosted by the United States for only the second time in this century.

Your assistance is welcomed and it is hoped that you will share the Committee's conviction that this project has substantial potential to benefit the solid-earth sciences. Thoughtful contributions from the community of colleagues will be essential to the success of the project. Please forward your comments to Peter J. Wyllie, Committee on the Solid-Earth Sciences, National Research Council (HA 460), 2101 Constitution Avenue NW, Washington, D.C. 20418.

FIFTY YEAR MEMBERS TO BE HONORED AT CONVENTION

John Kilkenny has been doing a bit of research to find the twenty-seven (27) members listed here as belonging to the Pacific Section AAPG for fifty years or more. These guys will be honored at the joint convention luncheon on Thursday from 11:30 to 1:30 p.m. We will give them tickets to the luncheon if they attend the convention. By the way, if you know of anyone who has been a member for fifty years or more and was left off the list, please contact John or let one of the officers of the Society know, preferably prior to the convention so they can be included at the luncheon. The list of members and the year they joined are:

1924

Sam Grinsfelder and Louis Waterfall

1927

Stan Wissler

1928

Bill Barbat

1930

Glenn Ferguson

1935

Ed Scott and O. F. Van Beveren

1936

James Kimble

1937

Hans Ashauer, Tom Dibblee, Mason Hill, Louis Simon, Loring Snedden, and Layton Stanton

1938

J. B. Anderson, Dick Haines, Jack Isberg, Joe LeConte, Max Payne, Fred Vandenberg, and Tom Woodward

1939

D. E. Ritzius, George Kribbs, Jim O'Flynn, Russ Simonson, Arch Warne, and Serge Reynolds

ANSWERS TO GEO-QUIZ

A	A	P	G		O	M	E	G	A		A	E	C	
A	C	H	E		R	O	Y	A	L		R	O	L	E
P	R	A	N	K		G	E	L	E	T	I	N	E	D
L	E	N	T	I	C	U	L	A	R		S	S	W	
		E		T	I	L	E		T	H	E			
T	O	R	A		V		T	L		O	N	T	A	P
I	T	I	S		I	F		A		R		R	C	A
A	T	T	H	E	C	O	N	V	E	N	T	I	O	N
R	E	I		N		R		A	N		O	V	E	N
A	R	C	E	D		M	P		T		M	A	D	E
			U	S	S		H	O	E	D		R		
	P	U	C		W	O	L	F	R	A	M	I	T	E
F	I	S	H	F	I	L	E	T		B	E	A	R	D
S	C	A	R		S	A	G	E	S		S	N	A	G
	A	F	E		H	Y	M	N	S		S	T	Y	E

MEMORIAL - CLIFFORD C. CHURCH

Cliff Church was a kind and gentle man. He was my model as a paleontologist and gentlemen since I first met him over forty years ago. Cliff was always generous with his sage advice when requested. He meticulously arranged beautiful museum caliber micro-paleontology slides that he shared in exchanges with his colleagues. These slides were prepared from most of the California "type" formation and microfossil localities ranging in age from recent through Jurassic.

Cliff was a pioneer in publishing on the foraminifera found on the "West Coast" in surface and subsurface samples. While working for Tidewater Associated Oil Company, he constructed some of the early fossil time stratigraphic correlation charts. Cliff was a close friend and worked with Dr. G. Dallas Hanna; later Margaret Hanna beautifully illustrated the fossils he described and named in publications.

Church assembled one of the most complete private libraries on the stratigraphy and paleontology in California. He was exceptionally generous in loaning his references.

Cliff loved field work and field trips. He led and contributed to them including the collection of fossil samples. He was nimble and "surefooted" and outclimbed most of us. His enthusiasm was contagious. He was a friendly and good visitor.

Clifford Church won many honors. He "went through" the offices of the Pacific Section SEPM and became President in 1965. I was fortunate to have attended a National AAPG-SEPM Convention in Houston in 1953 when he was National SEPM President and gave an outstanding address. He was conferred honorary life membership in the Pacific Section of both AAPG and SEPM emeritus in the Nationals. He was also emeritus in the American Institute of Professional Geologists.

Cliff was an excellent teacher at Stanford University and later at California State College, Bakersfield. He was loved and respected by his students and associates. He donated his fossil collection and much of his library to the Geology Department at CSUB.

He was a leader and participated in the Bio-Stratigraphic Seminars held at Bakersfield College in the 1950's to 1970's. Cliff was Chairman in 1957.

Church was on the original Board of Directors of the California Well Sample Repository. We catalogued the samples at the Gulf Oil Company corehouse at Paloma and coordinated the first move of cores from selected wells to the repository.

I was especially grateful to Cliff when he wrote and presented the citation when I was accorded an honorary life membership in AAPG.

Cliff was a good companion and loyal friend to many and we will sorely miss him.

Ed Stinemeyer

MEMORIAL - CUTLER WEBSTER

Cutler Webster, who died last February 26, 1989 in Denver, was well known in the local oil patch.

He began his career as a geologist in 1948 with Honolulu Oil Corporation and worked in the San Joaquin Valley for many years for that company and its successor, Tidewater Oil Company, as well as for Ferguson & Bosworth and as a consultant.

A graduate of Stanford University, he served as a pilot in the Army Air Corps during World War II. In accordance with his wishes, there will be no funeral service. Those wishing to make contributions in his memory may do so to the Christopher Webster Memorial Fund at Bakersfield High School.

Bill Rintoul

HISTORICAL OIL FIELD PHOTOS

Marty Mefferd is looking for historical oil field photos.

Mefferd is the Division of Oil and Gas' state oil and gas supervisor.

For 74 years, the division has kept oil and gas information for the state - well records, production statistics, legal and regulatory histories and publications.

Now a search is being initiated for historical photographs of California's oil field development as unique and valuable records, too.

It's an extension of the belief that finding and safeguarding knowledge of the past helps everyone understand the story of California's oil and gas industry.

"Not too many historical photographs are left," Mefferd said. "Help me to gather those we have, to create a complete and permanent record for us all.

Anyone with historical photographs they would like to loan the division for reproduction and archival purposes is invited to contact Susan Hodgson, the division's public information officer, or any of the agency's district offices.

Hodgson can be reached at 1416 Ninth Street, Room 1310, Sacramento, California 95814, telephone (916) 323-2731.

The division's district offices are in Bakersfield, (805) 322-4031; Coalinga, (209) 935-2686; Santa Maria, (805) 925-2686; Ventura, (805) 654-4761; Long Beach, (213) 590-5311; and Woodland (916) 662-4683.

Bill Rintoul

BILL WOULD STOP NEW OFFSHORE LEASES

A bill that would prevent new oil drilling within three miles from shore for all of California's coast has been introduced by Democratic State Senator Gary K. Hart.

The bill would also ban toxic waste disposal in the ocean, require more thorough treatment of sewage disposed in the ocean and give more enforcement power to the California Coastal Commission.

New state shoreline leases would be banned if the bill is adopted.



681 Encinitas Blvd. • Suite 312 • Encinitas, CA 92024 • Telephone (619) 942-6082

NEW PROPRIETARY STUDIES

CALIFORNIA COASTAL BASINS STUDY

WINTERS FM. & FORBES FM. STUDIES

WESTERN CANADIAN BEAUFORT SEA STUDY

N.E. ALASKA OFFSHORE WELL STUDIES

RECOMMENDED READING

U. S. GEOLOGICAL SURVEY

Circular 924: The Dangers of Handling Hazardous Chemicals in the Geologic Laboratory, by A. Riedmiller, P. L. Hauff, and R. W. Mathias, Free

Circular 827: The Handling, Hazards, and Maintenance of Heavy Liquids in the Geologic Laboratory, by P. L. Hauff and J. Airey, Free

Circular 1022: Catalog of Worldwide Tidal Bore Occurrences and Characteristics, by S. Bartsch-Winkler and D. K. Lynch, Free

Circular 1025: USGS Research on Energy Resources - 1988 Program and Abstracts, V. E. McKelvey Forum on Mineral and Energy Resources, edited by L. M. H. Carter, Free

Circular 1021: Concepts for a National Water Quality Assessment Program, by R. M. Hirsch, W. M. Alley, and W. G. Wilber, Free

SMITHSONIAN

Vol. 19, No. 11, February 1989

Tracking the Mighty Gulf Stream, by W. H. MacLeish

GEOLOGY

Vol. 16, No. 12, December 1988

Origin of Microlayering in Worldwide Distributed Iron-Rich Marine Cretaceous/Tertiary Boundary Clays, by B. Schmitz

Thermal Overprint on Blueschists of the Seward Peninsula: The Lepontine in Alaska, by B. E. Patrick and J. E. Lieberman

Using Pluton Ages to Date Regional Deformations: Problems with Commonly Used Criteria, by S. R. Paterson and O. T. Tobisch

Oak Ridge Fault, Ventura Fold Belt, and the Sesar Decollement, Ventura Basin, California, by R. S. Yeats, G. J. Huftile, and F. B. Grigsby

Vol. 17, No. 1, January 1989

Reinterpretation of Lower Mesozoic Rocks on the Chilkat Peninsula, Alaska, as a Displaced Fragment of Wrangellia, by G. Plafker, C. D. Blome, and N. J. Siberling

Geomorphic and Hydrologic Implications of the Rapid Incision of Afton Canyon, Mojave Desert, California, by N. Meek

Campanian/Maastrichtian Stage Boundary in Southern California: Resolution and Implications for Large Scale Depositional Patterns, by J. L. Bannon, D. J. Bottjer, S. P. Lund, and L. R. Saul

AAPG BULLETIN

Vol. 73, No. 1, January 1989

Growth Fault-Bend Folding at Southeast Lost Hills, San Joaquin Valley, California, by D. A. Medwedeff

GEOLOGICAL SOCIETY OF AMERICA BULLETIN

Vol. 100, No. 12, December 1988

The Mechanical Paradox of Large Overthrusts, by R. A. Price

Paleoceanography: A Review for the GAS Centennial, by W. A. Price

Vol 101, No. 1, January 1989

Clastic Lawsonite, Glaucofanite, and Jadeitic Pyroxene in Franciscan Metagraywackes from the Diablo Range, California, by R. N. Brothers and R. H. Grapes

Late Cenozoic Sedimentation in California Continental Borderland Basins as Revealed by Seismic Facies Analysis, by L. S. Teng and D. S. Gorsline

Lucy Birdsall

PACIFIC SECTION - AMERICAN ASSOCIATION OF PETROLEUM GEOLOGISTS

OFFICERS 1987 - 1988

President JACK H. WEST
(805) 321-6040
President Elect BEN CAHILL
(916) 452-7541
Vice President JACK CUNNINGHAM
(805) 658-8451
Secretary BILL LONG
(805) 321-6041
Treasurer PAUL HACKER
(818) 884-4071
Past President DAN E. PASQUINI
(805) 991-0526

Newsletter Staff

Co-Editors LAURA BAZELEY
(805) 326-1112
JUDY RUSSELL
(805) 321-6197
Historical BILL RINTOUL
Legislation TOM WRIGHT

Associate Editors

Alaska MARCIA MATTHIEU
(907) 263-4675
Coast AKBAR SHERIFF
(805) 656-7600
Los Angeles Basin ALLAN SHAREGHI
(213) 894-3052
Northern California TOM MCKENNON
(415) 842-0426
Pacific Northwest WILLIAM S. LINGLEY, JR.
(206) 459-6772
Sacramento VERN BENNETT
(916) 489-2333
San Joaquin BOB HORTON
(803) 833-3059
Recommended Reading LUCY E. BIRDSALL
(818) 244-5117

NEWSLETTER of the Pacific Section - American Association of Petroleum Geologists Newsletter is published bimonthly by the Pacific Section. Material for publication, requests for previous copies, and communications about advertising costs should be addressed to JUDY RUSSELL, P. O. BOX 12021, BAKERSFIELD, CA 93309-2021.

CHANGE OF ADDRESS, subscription, and membership inquiries should be directed to: MEMBERSHIP SECRETARY, PACIFIC SECTION AAPG, P. O. BOX 1072, BAKERSFIELD, CA 93302.

PUBLICATIONS COMMITTEE: Pacific Section - American Association of Petroleum Geologists, P. O. Box 631, Ventura, CA 93302.

**DEADLINE FOR
JUNE/JULY
ISSUE
MAY 31, 1989**

NEWSLETTER

**Pacific Section A.A.P.G.
P. O. Box 1072
Bakersfield, CA 93302**

FORWARDING AND RETURN POSTAGE GUARANTEED

**BULK RATE
U.S. POSTAGE PAID
BAKERSFIELD, CA
PERMIT NO. 1163**



PACIFIC PETROLEUM GEOLOGIST NEWSLETTER

of the Pacific Section
American Association of Petroleum Geologists

June & July 1989 No. 4

THE PRESIDENT'S COLUMN

If you attended our convention in Palm Springs in May, you know what a terrific job General Chairman Mike Mitchell did for us. What you may not know is that Mike managed to turn a nice profit for us in spite of the relatively low attendance. He told me that it was all done with mirrors!

Mike's numerous committee members worked long and hard and are to be congratulated for an outstanding job. Well done Los Angeles Basin Geological Society! Now the ball is in the court of the Northern California Geological Society, who will have some help from Tulsa for the 1990 National Meeting. I know that we can look forward to another great convention.

Congratulations to the newly elected Pacific Section officers for 1989-1990: President-elect, Jack Cunningham; Vice President, John Randall; Secretary, Rick Bowersox; and Treasurer, Marty Hall-Burr (1989-1991). President Ben Cahill will have a great crew with which to navigate the stormy seas.

AAPG is participating with the American Geological Institute in a program designed to enhance earth science education in kindergarten through high school throughout the nation. Several of our members have volunteered to serve on the AAPG committee headed by Norb Cygan (Chevron). If you have any thoughts or opinions on the subject, pass them along to committee members Alan Bartley (SPA), Penny Webster-Scholten or James Donchin (NCGS), Butch Brown (CGS) and Dan Olson or Becky Wermeyer (SJGS).

This is my last column, as Ben Cahill will be taking over July 1, 1989. It has been a privilege and an honor serving as your President, and I thank you for giving me the opportunity to give back a little of what petroleum geology has given me.

Jack West, President

WINES OF THE NEOGENE

AUGUST 26, 1989

hosted by

COAST GEOLOGICAL SOCIETY

This combination wine tasting/field trip will

start at Unocal's parking lot,

2323 Kroll Drive, Ventura

at 7:00 a.m.

Two winery stops and lunch are planned.

Field guide, lunch and glasses

are provided for \$45.00.

Don't delay, the trip is limited to only

forty (40) people.

For reservations contact:

Susan Lewis
(805) 656-7600
Extension #192

Lauren Irvine
(805) 654-7032

Los Angeles

The following are upcoming LABGS meetings with the speakers scheduled to appear and the topics that they will discuss:

July 20 - John T. Ford, JPL, "Remote Sensing of Strike-Slip Faults in Eastern Mojave."

August 17 - John Cooper, Cal State Fullerton, "Marine Fluvial Clastics of Lower Cambrian, Eastern Mojave - Great Basin."

The meetings will continue to be held at noon at Luminaria's Restaurant in Monterey Park. For reservations or information, call Elaine Weed at (213) 894-3097 or Jim Grant at (213) 894-7404.

DAVIS & NAMSON Consulting Geologists

1545 North Verdugo Road, Room 09
Glendale, CA 91208 U.S.A.
(818) 507-6650

Petroleum Exploration, Seismic Risk,
Tectonics and Basin Studies, Balanced
Cross Sections (Courses & Consulting)

DR. THOM DAVIS

DR. JAY NAMSON

San Joaquin

No SJGS meetings are scheduled for July and August. Fall barbeque **September 22, 1989**. Suggestions for talks for meetings should be addressed to Bob Lewy at (805) 321-7047.

The results of the San Joaquin Geological Society officers election are in and the winners are: **David Wratcher of Santa Fe Energy**, President; **Dr. Robert Horton of Cal State Bakersfield**, President-elect; **Bill Long of OXY USA, Inc.**, Vice President; **Bob Lewy of ARCO**, Secretary; **Larry Knauer of the California Well Sample Repository**, Treasurer; **Donna Miller of Chevron** and **Daryl Knapp of Core Laboratories**, Delegates; and **Ken Hersh, Consultant** and **Lee High of Mobil**, Alternate Delegates.

Coast

The following are the upcoming meetings:

July 28 - Tom Dibblee will present "Mid-Tertiary Conglomerates on the Northern Margins of the Ventura and Los Angeles Basins and Their Significance."

August 26 - Wine Tasting/Field Trip of Santa Ynez - Santa Maria area, "Wines from the Neogene," is open to all Pacific Section members and their spouses. Space is limited to forty (40) participants so make your reservations early.

Meeting time is at 6:00 p.m., dinner at 7:00 p.m. at the American Legion Hall in Ventura. The address is 83 South Palm. For reservations please contact Susan Lewis at 805/656-7600 - Extension #192 or Lauren Irvine at 805/654-7032.

The slate of officers for the next year's executive committee of the Coast Geological Society includes the following: **C. F. Corky Isslehart of Texaco**, President; **Dalton Lockman of Exxon**, Vice President; **Bob Ballog of Unocal**, Treasurer; and **Dave Salter of Chevron**, Secretary.

PACIFIC SECTION AAPG OFFICERS 1989 - 1990

President

Ben Cahill, Energy Log

President-elect

Jack Cunningham, Consultant

Vice President

John Randall, Chevron

Secretary

Rick Bowersox
Mission Resources

Treasurer (1989-1991)

Marty Hall-Burr
Union Oil International

Alaska

The following are the new officers for the Alaska section: **Rodger Stickney of Unocal**, President; **Rich Nelson of ARCO**, Vice President; **Bill Bredar of BP Exploration**, Secretary; **Jerry Siok of BP Exploration**, Treasurer; **John Whitney of NOAA**, President-elect; **Bill Pyle of Woodward-Clyde**, Past President.

The new Board of Directors are: **Katie Nitzberg of BP Exploration**, **Marcia Matthieu of ARCO**, **John Reeder of the State of Alaska**, **Becky Watson of ARCO**, and **Mike Werner of ARCO**.

There are no meetings scheduled for the months of June, July and August.

Sacramento

Vic Cheven presented his paper "Stratigraphic Complexity of the Winters Formation" to the Sacramento Petroleum Association on May 24, 1989. Vic had previously presented this paper at the National Convention in San Antonio and at the Poster Session at the Pacific Section Meeting in Palm Springs.

Diana Buchanan, a senior geology major at CSU, Sacramento has been awarded a \$400 scholarship by the SPA to help defray the cost of her field camp this summer.

A group from the SPA and the API toured the Homestake Gold Mine at Clearlake on May 26, 1989.

Northern

The following are the new officers elected to the executive committee of the Northern California Geological Society: **Tom Dignes**, President-elect; **Juan Guerrero**, Vice President; **Mike Colvin**, Secretary; **Shawn May**, Treasurer; **Rick Haack**, Program Director; **Lloyd DeKay**, Counselor; **Neil Crow**, Counselor; **Linda Thurn**, Delegate; and **Penny Webster-Sholten**, Delegate.

Jason Donchin, President-elect during 1988-1989, will succeed to the President's position. AAPG delegates who will continue to serve include **Frank Koch** (Chairman), **Gordon Manings**, **John Hattner**, **Mary Rose Cassa**, and **Rusty Gilbert**.

NEW MEMBERS**SOUTHERN CALIFORNIA**

Paul L. Vigus - Ventura;
Michael R. Ploessel - Agoura Hills;
Kirk A. Waln - Unocal, Ventura;
Michael J. Leary - Oxnard; **Joseph F. Elliott** - San Juan Capistrano; **Mike E. Johns** - Ventura; **Harry M. Mishler** - Exxon USA, Thousand Oaks;
Stephen P. Mulqueen - Ventura;
Steven L. Shestag - Harding Lawson Associates, Newbury Park; **Daniel E. Schwartz** - SWEPI, Bakersfield; **Mike E. Johns** - Unocal, Ventura; **Alan Trujillo** - Santa Barbara

CGS AWARDS

The Coast Geological Society is proud to fund the annual \$500 scholarship in memory of Dr. James M. Ivensen, Cal Lutheran University. The awardees this year are Gayle Cekada, UCSB, and Michael Kotraba, Cal Lutheran. The award of a Brunton compass was made to Leslie Turrini, Santa Barbara City College.

**ANNUAL R. M. PYLES BARBEQUE
 MAY 20, 1989**

Soule Park in Ojai is set to be the site of the Annual R. M. Pyles barbeque to be held Saturday, May 20, 1989 at 11:00 a.m.

Proceeds from the fun event provide a major portion of the funding needed to send approximately 100 underprivileged Ventura County boys to the oil industry-sponsored R. M. Pyles boys camp each year. The grand prize this year is a one-week vacation in Hawaii for two.

Tickets to the barbeque may be purchased for \$10 each, or for more information call (805) 257-2490.

WE NEED YOUR HELP AND IDEAS!!

The Northern California Geological Society and Bay Area Geophysical Society are working to promote earth science education for students in kindergarten through twelfth grade. A nationwide effort to promote science and math education has been initiated in order to halt the current decline of interest and enrollment in these fields. There are many avenues we can pursue to accomplish this goal, including to: participate in career fairs, prepare and give career-oriented earth science lectures, act as a referral system for earth science resources and teach the teachers.

We need volunteers to help formulate plans and put them into action. Commitments can range from donating materials, to an hour or two of time, to participation in an ongoing project. Please contact Janice Johnson, Chevron USA, Post Office Box 5042, San Ramon, California 94583-0942 for more information.

CORE REPOSITORY

HELP! We need sample location data for the following:

Buttes Gas & Oil
 Weislerman #1
 Cal Time
 Faria #1
 Chevron
 Bradley Land #5-74
 Conoco
 Union Tracy L & W #1
 Consolidated Oil
 Community #11-A
 Continental Oil
 M-T #1
 General Petroleum
 Archibald #14
 Gulf/Texaco
 Livingston #1
 Gulf
 Rains #1
 Rains #2
 Raney #1
 Sudden #1

If you have any information please call (805) 664-2324.

Larry Knauer, Curator

COMING EVENTS

July 9 to 19 - 28th International Geological Congress, Washington D.C. For more information call IGC at (918) 584-2555.

August 26 - CGS Summer Field Trip, "Wines of the Neogene". For reservations, contact Susan Lewis at (805) 656-7600 extension 192 or Lauren Irvin at (805) 654-7032.

June 3 to 6, 1990 - National AAPG Meeting, San Francisco.

July 29 to August 3, 1990 - Circum - Pacific Energy and Mineral Resources Conference, Honolulu.

RECENT MOVES

Dan Szymanski is with Chevron in Bakersfield, formerly with Tenneco in Bakersfield.

John Neale transferred back to Bakersfield from San Ramon with Chevron.

Curt Peck transferred to Bakersfield from San Ramon with Chevron.

Lee Robinson moved from Englewood, Colorado to Arlington, Texas.

Marty Smithey transferred from Denver to Dallas with Maxus Energy.

Les Steenblock transferred from Anchorage to Denton, Texas with Placid Oil Company.

Dongald Thamer moved from Salt Lake City, Utah to Steamboat Springs, Colorado.

DIRECTORY CORRECTION

The phone number for Robert Hacker and Paul Hacker was listed incorrectly in the Directory. The correct business number is (805) 325-1451.

**SANTA FE SPRINGS
 PROPOSES HEFTY
 FEE INCREASE**

The City of Santa Fe Springs needs to increase the per well fee to \$3,000 per year from the current \$1,000 city officials said during a June 1, 1989 meeting of the city's Oil Field Advisory Committee.

The fee increase will offset most of the environmental cleanup costs the city's redevelopment agency is incurring to develop parcels of land in the 65 year-old Santa Fe Springs Oil Field, according to the City Manager, Don Powell.

**FALL FIELD TRIP
PACIFIC SECTION SEPM
GEOLOGY OF NORTHERN
BAJA, CALIFORNIA**

OCTOBER 14-15, 1989

Mark your calendar now to reserve October 14 and 15, 1989 for a field trip to see the latest geologic findings in northern Baja, California. The geology faculty at the Universidad Autonoma de Baja California (UABC), along with Pat Abbott of San Diego State University, are organizing visits to prime localities for rocks and structures ranging in age from Ordovician to Holocene. The theme is examination of key outcrops from different systems to gain a good overview of the long-term geologic history of the region. Sites to be visited include:

Pliocene San Diego Formation fossiliferous marine shelf deposits at La Joya.

Miocene Rosarito Beach Formation fluvial conglomerates in buttress unconformity against Cretaceous Rosario Formation basin plain mudstones at Medio Camino.

Cretaceous Rosario Formation mid-submarine fan slumped strata at Las Gaviotas.

Miocene Rosarito Beach Formation shallow marine volcanoclastic strata at Mesa Los Indios.

Cretaceous Rosario Formation inner submarine fan conglomerate and erosive features at km 92 del camino de cuota.

Geomorphic features along the active Agua Blanca fault.

Cretaceous Alisitos Formation rocky coastline strata and rudist banks at Ejido Eréndira.

Cretaceous Alisitos Formation marine shelf strata interbedded with volcanic layers, plus Rosario Formation storm beds, at Penasco La Lobera.

Cretaceous Rosario Formation hummocky cross stratification and classic Coralliachama orcutti rudistids at Punta Banda.

Ordovician allochthon of quartzarenite - shale - limestone on top of Permian-Triassic flysch at San Marcos.

Eocene Las Palmas fluvial gravels in granitic bedrock at Valle de las Palmas.

Trip logistics will start with a 7:00 a.m. departure on Saturday, October 14 from a San Diego State University parking lot. (Camping spaces will be provided in San Diego on Friday night, October 13 for those who so desire). Travel will be in vans (some provided by participants and some rented) over decent roads. We will drive southerly along and about Highway 1 looking at outcrops. An authentic Mexican lunch will be eaten atop the sea cliffs at El Mirador with a panoramic view. Dinner will be fresh seafood on the beach at Penasco La Lobera where you will roll out your sleeping bag for the night.

On Sunday, October 15 we will drive northerly. Lunch will be Mexican barbecue lamb on the UABC campus on Punta Morro. Afternoon travel will be up Highway 3 to the border crossing at Tecate where the trip ends. Hope you, and your colleagues, family and friends, will join us for this Baja experience.

Reinhard Suchsland

**CALL FOR PAPERS
BAJA, CALIFORNIA GEOLOGY**

**FALL FIELD TRIP
PACIFIC SECTION SEPM**

A volume is to be published by the Pacific Section SEPM in conjunction with the Fall Field Trip. If you have some Baja, California research results, please consider publishing them in the forthcoming volume on Geologic Research in Baja, California to be printed for the October 1989 Pacific Section SEPM Field Trip. During this early planning stage, we need to know how many people are interested in participating. Please send the working title of your manuscript to Pat Abbott at the Department of Geological Sciences, San Diego State University, San Diego, California 92182-0337, or call (619) 594-5586 for further information. Rough drafts of manuscripts will be needed for review by mid-July. Edited manuscripts will be returned to authors for preparation for camera-ready copy on oversized format sheets in typical Pacific Section SEPM style. We expect a sizeable number of manuscripts to be submitted so the volume should be noteworthy. We hope to hear from you soon.

**NEW ENVIRONMENTAL
PUBLICATION**

**ENVIRONMENTAL CONCERNS IN THE
PETROLEUM INDUSTRY**

Edited by Stephen M. Testa

This publication contains papers presented at the symposium on "Environmental Concerns in the Petroleum Industry" presented at the Pacific Section AAPG Annual Convention held in Palm Springs (May, 1989) as well as papers not presented due to time constraints. This symposium focused upon the environmental concerns currently facing the petroleum industry. Papers presented in this volume include discussions on the fate and transport of petroleum hydrocarbons in soil and groundwater, soil and groundwater contamination and subsidence as a result of past petroleum-related activities, forensic geochemistry, and handling and disposal of cogeneration wastewater from recovery operations. A multi-disciplinary group participated including representatives of various federal and state agencies, industry, environmental consultants and research institutions.

The volume is available from the Pacific Section AAPG for \$25.50 (including postage). Direct orders to:

Hans Schwing
Publications Committee
Pacific Section AAPG
Post Office Box 631
Ventura, California 93302

Make checks payable to Publication, Pacific Section AAPG

CALL FOR PAPERS

AAPG/SEPM ANNUAL CONVENTION JUNE 1990 - SAN FRANCISCO

SAN JOAQUIN VALLEY FIELD TRIP & GUIDEBOOK

This three day pre-meeting trip is planned as a stratigraphic and structural tour through the significant oilfields and outcrops of the Bakersfield area, Southern San Joaquin and Westside San Joaquin Basin. An international audience is anticipated with possibly most participants on their first trip to the basin.

At this time we are soliciting authors who might be interested in contributing work on the classic exposures and oilfields of the basin for the Guidebook. We are looking for updates of specific field interpretations as well as the regional syntheses of particularly productive units and the geologic evolution of specific areas from the Cretaceous to the Recent. The integration of stratigraphy, structure, geophysics, exploration, development, production techniques, tertiary recovery and historical context will be the focus of the Guidebook; but contributions which deal solely with one aspect will also be welcome. Additional topics will also be considered so please contact one of the editors if you think you might have some interesting work to contribute. If you or a colleague would be interested in submitting a paper which may be included in the Guidebook the deadlines are as follows:

Rough Abstract

September 1, 1989

Rough Draft

December 15, 1989

Final Camera-ready Draft

February 15, 1990

Additional information can be obtained through the leaders/editors. Thank you.

Leaders/Editors:

Jon Kuespert
Chevron USA
Post Office Box 5042, Room C2096
San Ramon, California 94583-2398
(415) 842-0580 or (415) 680-7951

Tony Reid
Bechtel Petroleum
Post Office Box 127
Tupman, California 93276
(805) 763-6323 or (805) 398-8439

SACRAMENTO VALLEY GEOLOGY SYMPOSIUM & POST MEETING FIELD TRIP

Abstracts and manuscripts concerning any aspect of the geology of the Sacramento Valley are solicited for presentation and publication at a symposium at the June 1990 Annual AAPG/SEPM convention in San Francisco. The half-day symposium will consist of approximately ten oral presentations; each oral presentation will be accompanied by a paper in a symposium volume to be published by the Pacific Section, SEPM at the time of the meeting. Additional manuscripts, without oral presentation, will be accepted for publication. A post-meeting field trip to the Sacramento Valley is also planned.

Contact Conveners/Editors

September 15, 1989

Abstracts

November 1, 1989

Manuscripts

December 1, 1989

Final Camera-ready Manuscript

To be Announced

Conveners/Editors:

Raymond V. Ingersoll
Department of Earth and Space Sciences
University of California
Los Angeles, California 90024-1576
(213) 825-8634
(213) 206-1178
(213) 825-3880

Tor H. Nilsen
Applied Earth Technology, Inc.
595 Price Avenue, Suite 1
Redwood City, California 94063
(415) 366-0838



681 Encinitas Blvd. • Suite 312 • Encinitas, CA 92024 • Telephone (619) 942-6082

NEW PROPRIETARY STUDIES

CALIFORNIA COASTAL BASINS STUDY
WINTERS FM. & FORBES FM. STUDIES
WESTERN CANADIAN BEAUFORT SEA STUDY
N.E. ALASKA OFFSHORE WELL STUDIES

BOOK REVIEW

ALASKAN NORTH SLOPE GEOLOGY

Pacific Section SEPM Publication #50

Vol. 1 and 2, 1987

Tailleur, I. and Weimer, P. (editors)

These volumes include most of the papers presented at the AAPG/SEPM/SEG Pacific Section North Slope Seminar II held May 22-24, 1985 in Anchorage, Alaska and a few not originally presented there but germane to the subject. Abstracts of the original symposium oral papers that were not expanded to manuscript form are also included. It is an outstanding compilation of the geology of the North Slope learned up to the 1985 Symposium date, with a wealth of basic geological information developed over many years of exploratory work, a major contribution of the oil and mining industry, the U.S.G.S. and Academe. The editors have purposely left all technical interpretations intact, leaving the reader free to judge merits on their own where conflicts, inevitable in such a geologically complex area, occur. They have also richly spiced the two volumes with reprints of historical vignettes from reports on early exploration in the far north Pacific and North Slope areas dating back all the way to 1761 that add a nice touch of historical perspective.

Volume 1 is divided into sections on History (four papers); Reservoirs (twelve papers, six full length, six abstracts); Geochemistry (five full length papers); Coal, Water and Other Resources (fifteen papers, seven full length, eight abstracts); and Stratigraphy (thirty-three papers, nineteen full length, fourteen abstracts), comprising 542 pages. The section on Stratigraphy includes a number of papers on paleontology and paleogeography as well.

Volume 2 is divided into sections on Geophysics (nine papers, five full length, four abstracts); Structure/Tectonics (twenty-eight papers, eleven full length, seventeen abstracts); Synthesis (seven papers, three full length, four abstracts); Appendices that include the Program of Technical Sessions of the 1985 AAPG/SEPM/SEG North Slope Seminar II, Anchorage, Alaska; Senior-Author Biographies; North Slope Geographic Name Sources for Geologic Nomenclature; Program and Abstracts of the 1987 GSA Cordilleran Section Brooks Range Symposium, Hilo, Hawaii, and Plates, consisting of five stratigraphic correlation charts and one seismic line across the Barrow Arch into the western Beaufort Sea. Volume 2 comprises 329 pages.

The section on Geophysics includes five papers related to problems of permafrost and four on paleomagnetic studies of fundamental importance in deciphering the still controversial plate tectonic evolution of the North Slope portion of Alaska. For instance, the paper in this section on the Kuparuk River Formation that substantiates some seventy degree counterclockwise rotation of northern Alaska has important bearing on validity of several of the plate tectonic evolutionary models in the "Synthesis" section of this volume. The section on Structure/Tectonics offers an extensive review of Brooks, Sadlerochit, Franklin and Shublik Ranges structure and several papers dealing with the Brooks Range ophiolites, including important radiometric age dating that relates to the age of involved rocks and the age of emplacement. The section on Synthesis contains a number of papers and abstracts that represent exemplary efforts to develop models accounting for all aspects of the evolution of the enormously complex geology of the entire Arctic region.

Publication #50 contains a staggering amount of basic geologic information and will serve as an outstanding source book for any geologist involved in North Slope geology now or in the future. At the price SEPM is making it available, it must be the premier book bargain of the decade. Every Arctic geologist should have it on the desk.

Publication #50 may be ordered from Pacific Section SEPM, Post Office Box 10359, Bakersfield, California 93389, payment by check (only) made out to the "Pacific Section SEPM". Price is \$45 for members, \$48 for non-members, plus \$2 for shipping and handling.

*William K. Gealey
Chevron Retiree*

UNITED STATES GEOLOGICAL SURVEY NEWS

The United States Geological Survey has made its multi-channel seismic-reflection data, collected in 1979 offshore California from Point Conception to Point Sur available through the National Geophysical Data Center. Call (303) 497-6338 for inquiries and pre-orders. For technical information, contact J. Bruce Grant at (303) 497-6345.

OREGON DEPARTMENT OF GEOLOGY AND MINERAL INDUSTRIES PUBLICATIONS

Geology and Geothermal Resources of the Breitenbush-Austin Hot Springs Area, Clackamas and Marion Counties, Oregon, Open-File Report #0-88-5 edited by D. R. Sherrod of the U. S. Geological Survey. The price is \$8.00. The report summarizes several ongoing investigations, including geologic mapping, alteration studies, and the heat-flow results from cooperative and industrial drilling programs. The researchers were able to use, for the first time, previously confidential information from industry drilling.

Oregon's rocks and minerals are the subject of a newly revised version of an older publication by the Oregon Department of Geology and Mineral Industries (DOGAMI). **A Description of Some Oregon Rocks and Minerals**, released by the Department as Open-File Report #0-88-6 was first written by H. M. Dole and published in 1950, and a revised edition appeared in 1976. The new release is the second revision and was prepared by L. L. Brown of the U. S. Bureau of Mines in Albany, originally as a 4-H Lead Guide for the Oregon State University Extension Service. The price is \$5.00.

Geologic Map of the McKenzie Bridge Quadrangle, Lane County, Oregon, was prepared by G. R. Priest, G. L. Black, and N. M. Woller of DOGAMI and E. M. Taylor of Oregon State University. It was published in DOGAMI's Geological Map Series as Map GMS-48. Price is \$8.00.

Geology and Mineral Resources Map of the Owyhee Ridge Quadrangle, Malheur County, Oregon, was prepared by DOGAMI geologist M. L. Ferns with partial funding by the COGEOMAP program of the U. S. Geological Survey, and has been published in DOGAMI's Geological Map Series as GMS-53. It is the first published result of an ongoing study of southeastern Oregon areas with a potential for mineral resources. The price is \$4.00.

For information on mining activity in Oregon, contact Mark L. Ferns, Oregon Department of Geology and Mineral Industries, Baker Field Office, 1831 First Street, Baker, Oregon 97814 or telephone (503) 523-3133.

Publications are available at the Oregon Department of Geology and Mineral Industries, 910 State Office Building, 1400 SW Fifth Avenue, Portland, Oregon 97201-5528. Orders under \$50.00 require prepayment.

PACIFIC SECTION AAPG DIRECTORY

The new directories have arrived!

Thanks to Ed Karp (AAPG), Sherry Schussler (SEPM), and Mary Johnston (SEG).

The Directories are available at local meetings for \$10.00 (\$15.00 for non-members).

Copies are also available for \$12.50 (\$17.50 for non-members) by mail.

The following order form is provided for your convenience.

DIRECTORY ORDER FORM

NAME _____

ADDRESS _____

NUMBER OF COPIES _____ (\$12.50 each members)
(\$17.50 each non-members)

MAIL TO:

HANS SCHWING
PUBLICATION COMMITTEE
PACIFIC SECTION AAPG
POST OFFICE BOX 631
VENTURA, CALIFORNIA 93002

MAKE CHECKS PAYABLE TO: PUBLICATIONS, PACIFIC SECTION AAPG

RECOMMENDED READING

SOUTH COAST GEOLOGICAL SOCIETY

P. O. Box 10244, Santa Ana, CA 92711-0244

Geology of the Death Valley Region, edited by J. L. Gregory and E. J. Baldwin, Annual Field Trip Guidebook #16, 1988.

The Thomas W. Dibblee, Jr. Geological Foundations and Coast Geological Society, A day with Tom Dibblee at Rancho San Julian "Where it all Began", H. E. Ehrenspeck, editor.

GEOLOGY

Vol. 17, No. 1, January 1989

Magnitude and Significance of Miocene Crustal Extension in the Central Mojave Desert, California, by A. F. Glazner, J. M. Bartley and J. D. Walker

CALIFORNIA DIVISION OF MINES & GEOLOGY - CALIFORNIA GEOLOGY

Vol. 41, No. 8, August 1988

Mineral Wealth of Lucerne Valley, San Bernardino County, by D. Fife

Vol. 41, No. 9, September 1988

Volcanogenic Massive Sulfide Belt of the Western Sierra Nevada Foothills, by R. C. Martin

Parkfield Earthquake Prediction Experiment, Geophysical Instrumentation near Parkfield, by W. H. Bakun

Vol. 41, No. 10, October 1988

Geology of the Lower Granite Gorge, Grand Canyon of the Colorado River, by M. C. Woods

NEWSLETTER

Pacific Section A.A.P.G.
P. O. Box 1072
Bakersfield, CA 93302

FORWARDING AND RETURN POSTAGE GUARANTEED

Geologic Relationships along the San Gabriel Fault between Hardluck Canyon and Castaic, Los Angeles and Ventura Counties, by F. H. Weber, Jr.

AAPG BULLETIN

Vol. 73, No. 4, April 1989

Origin of Natural Gas in Sacramento Basic, California, by P. D. Jenden and I. R. Kaplan

Exchange Format for Transfer on Geologic and Petroleum Data: AAPG-A, by B. R. Shaw and H. O. Waller

Origin of Hemipelagic Source Rocks during Early and Middle Miocene, Monterey Formation, Salinas Basin, California, by K. A. Mertz, Jr.

Vol. 73, No. 5, May 1989

Review of Characteristics of Low-Permeability Gas Reservoirs in Western United States, by C. W. Spencer

Effects of Stratigraphic Heterogeneity on Permeability in Eolian Sandstone Sequence, Page Sandstone, Northern Arizona, by M. A. Chandler, G. Kocurek, D. J. Goggin, and L. W. Lake

GEOLOGICAL SOCIETY OF AMERICA BULLETIN

Vol. 101, No. 2, February 1988

Intra-arc Sedimentation and Tectonism: Late Paleozoic Evolution of the Eastern Klamath Terrance, California, by M. M. Miller

A Reinterpretation of Conjugate Folds in the Central Sierra Nevada, California, by S. R. Paterson

Lucy Birdsall

PACIFIC SECTION - AMERICAN ASSOCIATION OF PETROLEUM GEOLOGISTS

OFFICERS 1987 - 1988

President	BEN CAHILL
	(916) 452-7541
President Elect	JACK CUNNINGHAM
	(805) 658-8451
Vice President	JOHN RANDALL
	(805) 654-7034
Secretary	RICK BOWERSOX
	(805) 325-0750
Treasurer	MARTY HALL-BURR
	(213) 977-6284
Past President	JACK H. WEST
	(805) 321-6040
Newsletter Staff	
Co-Editors	LAURA BAZELEY
	(805) 326-1112
	JUDY RUSSELL
	(805) 321-6197
Historical	BILL RINTOUL
Legislation	TOM WRIGHT
Associate Editors	
Alaska	MARCIA MATTHIEU
	(907) 263-4675
Coast	DALTON LOCKMAN
	(805) 494-2205
Los Angeles Basin	ALLAN SHAREGHI
	(213) 894-3052
Northern California	TOM MCKENNEY
	(415) 842-0426
Pacific Northwest	WILLIAM S. LINGLEY, JR.
	(206) 459-6772
Sacramento	VERN BENNETT
	(916) 489-2333
San Joaquin	BOB LEWY
	(803) 393-7047
Recommended Reading	LUCY E. BIRDSALL
	(818) 244-5117

NEWSLETTER of the Pacific Section - American Association of Petroleum Geologists Newsletter is published bimonthly by the Pacific Section. Material for publication, requests for previous copies, and communications about advertising costs should be addressed to JUDY RUSSELL, P. O. BOX 1021, BAKERSFIELD, CA 93302-2021.

CHANGE OF ADDRESS, subscription, and membership inquiries should be directed to: MEMBERSHIP SECRETARY, PACIFIC SECTION AAPG, P. O. BOX 1072, BAKERSFIELD, CA 93302.

PUBLICATIONS COMMITTEE: Pacific Section - American Association of Petroleum Geologists, P. O. Box 631, Ventura, CA 93002.

**DEADLINE FOR
AUGUST/SEPTEMBER
ISSUE
JULY 31, 1989**

**BULK RATE
U.S. POSTAGE PAID
BAKERSFIELD, CA
PERMIT NO. 1163**



PACIFIC PETROLEUM GEOLOGIST NEWSLETTER

of the Pacific Section
American Association of Petroleum Geologists

August & September 1989 No. 5

THE PRESIDENT'S COLUMN

"Happy New Year!" The new term for the Pacific Section began on July 1, 1989. Thanks to Jack West and the 1988 - 1989 Executive Committee (especially the 1989 Convention General Chairman, Mike Mitchell and the Los Angeles Basin Geological Society), we're in pretty good shape. I hope President-elect Jack Cunningham can make the same statement next year.

The most critical project facing the Pacific Section is the 1990 National Convention to be held in San Francisco on June 3 through 6, 1990. The Pacific Section will co-host the convention with the Northern California Geological Society. The NCGS, along with Chevron, will shoulder most of the load. The Pacific Section will try to sponsor one or two short courses as well as three field trips. A fourth field trip will be sponsored jointly with the Pacific Section of the SEPM. The call for papers has gone out and abstracts are due November 1, 1989. Just like the Marine Corp., the Convention Committee can always use a few good people. Be prepared to be asked to help. Stay tuned for more details.

While on the subject of conventions, the 1991 Pacific Section Convention will be held in Bakersfield. Dan Schwartz of Shell will be the General Chairman. The 1992 Pacific Section Convention will be held in Sacramento at the recently opened Hyatt Regency across the street from the Capitol Building. Rich Boyd of Capitol Oil will be the General Chairman of that meeting.

My thanks to Ed Karp for his work on the "Membership Directory of Pacific Sections." That green color makes it impossible to misplace. Some controversy occurred in regards to the cartoon characters that appeared in place of members' pictures (or non-pictures). Hopefully, everyone will make sure that a photograph is sent with their 1990 - 1991 Pacific Section dues.

Hang in there gang - we will survive.

Ben Cahill, President

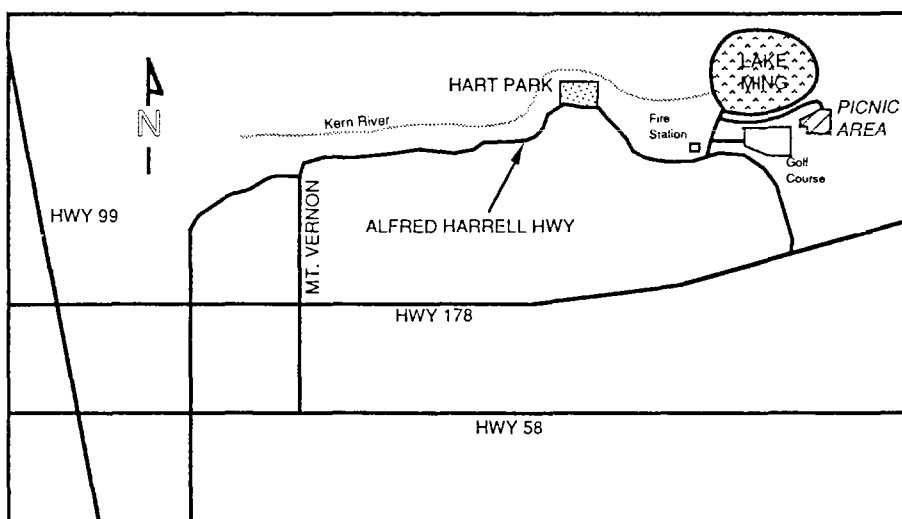
SAN JOAQUIN GEOLOGICAL SOCIETY

ANNUAL FALL BARBEQUE & GOLF TOURNAMENT

Friday, September 22, 1989

presented by

San Joaquin Geological Society
& California Oil Scouts Association



Barbeque

Place: Kern River Golf Course Picnic Grounds

Time: Attitude Adjustment at 5:00 p.m. Dinner at 6:00 p.m.

Cost: Prepaid - \$12.00 per person, at the dinner - \$15.00 per person.

Golf Tournament

Place: Kern River Golf Course

Time: 9:00 a.m.

Cost: \$25.00 per person (includes green fees, cart, lunch and prizes).

Information

Lanny Jones (Halliburton Logging) at (805) 833-1952

Deadline

September 15, 1989

Los Angeles

The following are upcoming LABGS meetings with the speakers scheduled to appear and the topics that they will discuss:

September 21 - Scott Hornafius, Mobil Oil, "Facies Analysis of the Monterey Formation in the Northern Santa Barbara Channel."

October 19 - Gregg H. Blake, Unocal, "Monterey Formation-Equivalent Sedimentation in the Los Angeles Basin."

The meetings will continue to be held at noon at Luminaria's Restaurant in Monterey Park. For reservations or information, call Elaine Weed at (213) 894-3097 or Jim Grant at (213) 894-7404.

LABGS now has T-shirts and polo shirts. The shirts will be available at the monthly meetings. Every well dressed geologist should have one!

DAVIS & NAMSON Consulting Geologists

1545 North Verdugo Road, Room 09
Glendale, CA 91208 U.S.A.
(818) 507-6650

Petroleum Exploration, Seismic Risk,
Tectonics and Basin Studies, Balanced
Cross Sections (Courses & Consulting)

DR. THOM DAVIS

DR. JAY NAMSON

San Joaquin

September 22 - Fall Barbeque/Golf/Tennis Tournament. Contact Bob Lewy at (805) 321-4163 for more information.

October 10 - Joint Meeting with SEG. John Master, President and Co-founder of Canadian Hunter, "Future Exploration in U. S. and Canada."

The meetings are held at the American Legion Hall at 2020 "H" Street in Bakersfield. Attitude adjustment starts at 6:00 p.m. and dinner is served at 7:00 p.m. For more information and reservations contact Larry Knauer at (805) 664-2324.

Suggestions for talks for meetings should be addressed to Bill Long at (805) 321-6041.

Coast

September 19 - Stephen Jones of Jones, Day, Reavis and Pogue Environmental, "Environmental Regulations and Concerns Affecting the Petroleum Industry".

Meetings are held the third Tuesday of every month. Meeting time is at 6:00 p.m., dinner at 7:00 p.m. at the American Legion Hall in Ventura. The address is 83 South Palm. For reservations please contact Susan Lewis at 805/656-7600 - Extension #192 or Lauren Irvine at 805/654-7032.

Northern

On **September 27, 1989**, Dr. Robert Schock, Director of Energy Programs at Lawrence Livermore Lab will present "Energy, The Economy and The Environment: What Does the Future Hold for the United States." For information on time and place, please call Mark Moon, Chevron, at (415) 842-0478.

NEW MEMBERS

SOUTHERN CALIFORNIA

George V. Leyva - Bakersfield; **Daniel E. Schwartz** - Shell Western, Bakersfield; **Herb P. Arklin** - U.S. Forest Service, Alpine; **Harold J. Clifford** - Vista; **Carol Hatten Cook** - San Carlos Oil & Gas, South Pasadena; **K. Mason Redding** - Ventura; **Gerard M. Flaherty** - Chevron, Bakersfield; **Carlos Salinas** - Occidental, Bakersfield; **Richard E. Herrmann** - Chevron, Bakersfield

OTHER STATES

Marcial G. Acosta - Mobil Oil, Denver, Colorado; **Stewart G. Squires** - Palantir Exploration, Littleton, Colorado; **Don Crosby** - Aurora, Colorado

COMING EVENTS

October 14 to 15 - Pacific Section SEPM Fall Field Trip, "Geology of Northern Baja, California." For more information contact Pat Abbott at (619) 594-5586.

October 28 to 29 - South Coast Geological Society Fall Field Trip along the San Andreas. Call Joan Baldwin at (714) 839-8664 for more information.

November 7 to 9 - Pacific Coast Oil Show and Conference, Bakersfield. Call Petro-Tech Expositions at (312) 922-1270.

June 3 to 6, 1990 - National AAPG Meeting, San Francisco.

July 29 to August 3, 1990 - Circum - Pacific Energy and Mineral Resources Conference, Honolulu.

PACIFIC COAST SECTION SEG BOARD 1989 - 1990

President

Mohit Banerjee
Santa Fe Energy

Vice President

Northern District
Louis Klonsky, Chevron

Southern District
Phil Eliades, Unocal

Western District
John Claussen, Chevron

Secretary
Mary Johnston
American Geophysical

Treasurer
Leigh Wood, Unocal

Editor
Sheila Pickett, Mobil

President-elect
Sandra Raeuchle, ARCO

Past President
Paul Sagasta, Unocal

STATE BOARD OF REGISTRATION FOR GEOLOGISTS AND GEOPHYSICISTS

Wayne A. Bartholomew, Thomas L. Slaven and Howard A. Spellman, Jr., have been reappointed to the State Board of Registration for Geologists and Geophysicists for another term by Governor George Deukmejian.

Mr. Bartholomew is a public member who is a business and health consultant in Elk Grove. Mr. Slaven is a registered geophysicist who was Vice President of Nor Pac Exploration before retiring. Mr. Spellman is a certified engineering geologist and is Vice President of Converse Consultants in Pasadena. Mr. Spellman is currently serving his third term as President of the Board.

Assembly Speaker Willie L. Brown, Jr., appointed Mr. Paul V. Priolo to a vacant position on the Board. Mr. Priolo was a republican member of the Assembly from 1966 to 1980. Mr. Priolo was co-author of the Alquist-Priolo Special Studies zone Act (1972). He also chaired a select committee on landslides. Since 1980, he has been a lobbyist in Sacramento.

In addition, at the July 18, 1989 meeting, the Board unanimously elected James R. Weddle, President and Wayne A. Bartholomew, Vice President.

Mr. Weddle is a petroleum geologist and President of San Joaquin Energy Consultants, Inc. of Bakersfield, a position he has held since 1980. He is a member of the AAPG and was President of the Pacific Section AAPG in 1983.

Governor George Deukmejian appointed Ms. Karen L. Melikian of Fresno to the position held by Joseph M. Crosby, who died in April of 1989.

Ms. Melikian has been an educator for the Fresno Unified School District since 1981. She received her bachelor's degree in education from California State University, Fresno and her master's degree in education from the University of Southern California. She is a member of the California Teachers Association, the National Education Society and the University of California Alumni Association.

SACRAMENTO BASIN — (Studies completed and in progress)		MESA VERDE
<ul style="list-style-type: none"> • Winters Formation • Paleogene "Gorges" (Martinez and Meganos Fm) • Stratigraphic Framework • Structural Framework/Midland Fault • Field Studies 		
NORTH SAN JOAQUIN BASIN —		
<ul style="list-style-type: none"> • Tracy Sd. • Blewett Sd. 		
LIVERMORE —		
<ul style="list-style-type: none"> • Domengine 		
EXPLORATION AND PRODUCTION SERVICES		(213) 945-7607 P.O. BOX 4733 WHITTIER, CA 90607

NOTICE OF SALE DUPLICATE OIL AND GAS WELL RECORD DOCUMENTS

On September 1, 1989, approximately 541 boxes (15" X 12" X 10", 30 to 50 pounds) of duplicate oil and gas well logs and other well records will be sold to the highest bidder by the Department of Conservation, Division of Oil and Gas. The boxes will be sold as one unit. ALL BIDS MUST BE SUBMITTED ON A DIVISION OF OIL AND GAS BID FORM AND DELIVERED IN A SEALED ENVELOPE NO LATER THAN 4:00 P.M. ON AUGUST 31, 1989. Deliver or mail your bid to the Department of Conservation, Division of Oil and Gas, 1416 Ninth Street, Room 1310, Sacramento, California 95814. Bids will be opened on September 1, 1989 at 10:00 a.m. by the State Oil and Gas Supervisor.

The well records will be available for inspection, by appointment only, during working hours on weekdays from August 1 through August 25, 1989. To obtain bid forms or to make an appointment to inspect the records, contact:

Elaine Shields
 Department of Conservation
 Division of Oil and Gas
 1416 Ninth Street, Room 1310
 Sacramento, California 95814
 (916) 323-1790

RECENT MOVES

Lynn Moses has moved from Richmond, Washington to Olympia, Washington.

Lee Robinson has moved from Englewood, Colorado to Arlington, Texas.

Marty Smithey has moved from Denver, Colorado to Dallas, Texas with Maxus Energy.

James Ashby has moved from Placentia to Costa Mesa.

Robert Chanpong has moved from Ponca City, Oklahoma to Houston with Conoco.

Robert Cook has moved from Huntington Beach to Plano, Texas with ARCO International.

Bill Hoag has moved from Midland, Texas to Tehachapi, formerly with Chevron.

Charles V. Lee has moved from Littleton, Colorado to Fort Collins, Colorado.

Daniel Nedland has moved from Bakersfield to Plano, Texas with ARCO.

Rex Olsen has moved to Enid, Oklahoma with Continental Trend Resources, formerly with Sun Exploration in Dallas, Texas.

Irvin Tailleir has moved from Menlo Park to Soquim, Washington.

Paula and Dave Hoffman have transferred from Chevron USA in Bakersfield to Chevron Research in La Habra.

R. C. (Rick) Caprio has moved from Bakersfield to Midland, Texas with Chevron.

Bob Menzie has left Chevron USA to join WZI in Bakersfield.

Bruce Bilodeau has moved from Bakersfield to San Ramon with Chevron USA.

Akbar Sheriff transferred to Houston from Ventura with Unocal.

Spencer Quam has been transferred from Ventura to Perth, Australia with Chevron.

SAN JOAQUIN WELL LOGGING SOCIETY

The San Joaquin Well Logging Society, a Chapter of the Society of Professional Well Log Analysts, will be holding a computer well log analysis show in Bakersfield, California on September 20, 1989.

For more information contact Bob Grossberg at Atlas Wireline Service, (805) 323-7529.

ELK HILLS WELL TURNS UP QUALITY OIL

by Bill Rintoul

More testing is in store for the record-depth Elk Hills well that turned up high gravity oil and a flow of gas from previously unexplored sand.

The Department of Energy with Bechtel Petroleum as operator is preparing to run bottom-hole pressure recorders as a prelude to shutting in the well and releasing the Parker Drilling Company rig.

The testing equipment will be kept on location. After the rig moves out, production testing will be resumed. Parker's Rig No. 182 is the rig that drilled the hole to total depth of 24,426 feet, setting a new depth record for California.

After opening up to a 20/64-inch bean to allow the well to clean up, the Department of Energy gauged production eleven hours later at a rate of 569,000 cubic feet per day of gas, 158 barrels a day of oil and 705 barrels a day of water. The flowing pressure was 980 psi.

Earlier, the well had been gauged at a rate of 571,000 cubic feet per day of gas, 106 barrels per day of oil and 325 barrels per day of water through a 12/64-inch bean. Flowing pressure was 2,075 psi.

The flow at DOE's No. 934-29R is from three perforated intervals totaling 130 feet in the overall interval from 17,100 to 17,365 feet. The pay sand is believed to be the Oceanic.

Testing of two deeper intervals in the record-depth well yielded only subcommercial flows of gas.

Initial testing of the gravity of the black oil being produced by the deep well indicated a gravity of 42 degrees. Retesting put the gravity of the premium crude at 46 degrees.

It's still early to speculate on the significance of the indicated find and its commercial aspects, but it is worth noting that the pipe cemented in the hole would lend itself to the cutting of a window at some future date, possibly a year or two down the road, to redrill in an attempt to get higher on the structure.

SOUTH COAST GEOLOGICAL SOCIETY FALL FIELD TRIP

The South Coast Geological Society's Fall 1989 Field Trip will be along the San Andreas Fault from the vicinity of Cajon Pass into the Carrizo Plain on October 28 and 29, 1989. Reservation forms for the trip are due by September 25, 1989. These forms may be obtained by writing to the South Coast Geological Society, Post Office Box 10244, Santa Ana, California 92711, or come to the September 11, 1989 meeting. All SCGS members will receive a reservation form in the mail. Call Joan Baldwin at (714) 839-8664 for further information.

Presenters on the trip include Kerry Sieh, Ray Weldon, John Foster, Al Barrows, Peter Weigand, Tom Dibblee and others.

ResTech Reservoir Evaluation Services

- **DIPMETER ANALYSIS**
Structural and Stratigraphic processing
Expert interpretation
Resurrection of old dipmeters from raw data prints.
- **TAPE CONVERSIONS AND EDITING**
All service companies - any tape format
Current or discontinued types - 7 and 9 track
- **EXPERT PETROPHYSICAL ANALYSIS**
Custom models tied to core analysis
Any logging suite - modern or old

*For more information, please call
BUZZ DELANO in Bakersfield at (805) 325-3987 or
HAROLD CRAWFORD in Ventura at (805) 653-1579*

2151 Alessandro
Suite 110
Ventura, CA 93001
(805) 653-1579
FAX: (805) 653-0580



5401 Business Park South
Suite 210
Bakersfield, CA 93309
(805) 325-3987
FAX: (805) 322-7193

LETTER TO THE EDITOR

GROUNDWATER INFORMATION REGULATIONS

The groundwater information regulations of the State of California are hopelessly, shamefully and needlessly counter-productive.

While every person who drills, abandons, deepens or perforates a well must file a report containing certain important information (Article 3, Section 13751), this information is not available for inspection by the public unless written authorization is obtained from the owner of the well (Section 13752).

This is unbelievably at odds with the declaration of water policy stated in Article 1: "The Legislature therefore declares that the people of the State have a primary interest in the location, construction, maintenance, abandonment and destruction of water wells and cathodic protection wells, which activities directly affect the quality and purity of underground waters." (My emphasis.)

This restriction to the release of water well information effectively locks up data of utmost importance to the efficient and successful exploitation of our water resources. Private geologists, engineers and drilling contractors seemingly are required to go about the business of drilling water wells and writing hydrogeologic reports as though no wells had been drilled in the area. In actuality, of course, such is not the case -- these same technicians manage to acquire the forbidden data, but at costly expenditure of time and energy.

The oil industry, which has far more compelling reasons to maintain secrecy of information on its wells, is required by the State to submit all pertinent data within sixty days of completion or abandonment, and these shall become public records subject to confidentiality in special circumstances up to a maximum of four years for on-shore wells (Section 3234, Oil and Gas Code). As a matter of practice, the logs of all wells are freely available to the public through commercial agencies. I can see no reason why water wells records should be more confidential than oil wells.

Another shortcoming of the Water Well Standards of the State of California, though not necessarily a component of information management, is the complete lack of recognition of the possibility of blowouts. As water becomes scarcer and wells go deeper and into bedrock the danger of blowouts increases, but no regulation covers this situation for water wells. The regulations for oil wells require surface casing at least ten percent of the proposed depth of the hole (for the purpose of anchoring the blowout prevention equipment). Admittedly, water wells are much less likely to encounter high pressure fluids than oil wells, but exploration holes seeking aquifers in untested deeper zones are subject to a risk that should be recognized and dealt with.

I, therefore, submit that drillers reports and logs of all water wells should be made easily available to the public as soon as they are received by the State and that the Department of Water Resources analyze the blowout potential of certain classes of water wells and recommend legislation to mitigate the dangers. This latter legislation would annoy contractors who would then be required to purchase or rent blowout preventers and learn how to use and maintain them. So we should probably wait until a blowout ruins a wetland or kills somebody before this legislation is written.

Harold H. Sullwold
Registered Geologist
Registered Engineer
Director, Carpinteria County Water District

RECOMMENDED READING

GEOLOGY

Vol. 17, No. 5, May 1989

Speed Limit for Oceanic Transform Faults, by D. F. Naar and R. H. Het

Presence of the Dinosaur Scelidosaurus Indicates Jurassic Age for the Kayenta Formation (Glen Canyon Group, Northern Arizona) by K. Padian

Paleomagnetic Evidence for Neogene Clockwise Tectonic Rotations in the Mojave Desert, California, by T. M. Ross, B. P. Luyendyk and R. B. Haston

AAPG BULLETIN

Vol. 73, No. 7, July 1989

Model for Hydrocarbon Migration and Entrapment with Faulted Structures, by U. S. Allan

Structural Interpretation of Hydrocarbon Traps Sealed by Basement Normal Block Faults at Stable Flank of Foredeep Basins and at Rift Basin, by T. P. Harding and A. C. Tuminas

Vol. 73, No. 6, June 1989

Role of Compaction in Listric Shape of Growth Normal Faults, by H. Bin Xiac and J. Suppe

Comments on Calculation of Diffusion Coefficients from Hydrocarbon Concentration Profiles in Rocks, by M. M. Thomas

NATIONAL GEOGRAPHIC

Vol. 175, No. 6, June 1989

What Caused Earth's Great Dyings: Extinctions, by R. Gore and photographs by J. Blair

NEWSLETTER

Pacific Section A.A.P.G.
P. O. Box 1072
Bakersfield, CA 93302

FORWARDING AND RETURN POSTAGE GUARANTEED

GEOLOGICAL SOCIETY OF AMERICA BULLETIN

Vol. 101, No. 5, May 1989

Severe Storms During Earth History, by E. J. Barron

Basin-Range Tectonics in the Darwin Plateau, South-Western Great Basin, California, by E. S. Schweig III

Microstructure of Serpentinized Mylonites from the Josephine Ophiolite and Serpentinization in Retrogressive Shear Zones, by G. T. Norrell, A. Teixell and G. D. Harper

Oligocene and Miocene Paleogeography of Central California and Displacement along the San Andreas Fault, by S. A. Graham, R. G. Stanley, J. V. Bent and J. B. Carter

An Ordovician Continental-Margin Sequence of Turbidite and Seamount Deposits in the Roberts Mountains Allochthon, Independence Range, Nevada, by R. Watkins and Q. J. Browne

SMITHSONIAN

Vol. 29, No. 2, May 1989

When Twenty Million Tons of Water Flooded Johnstown, by D. D. Jackson

Glacier Bubbles are Telling Us What Was in Ice Age Air, by J. Weiner

THE MINERALOGICAL RECORD

Vol. 19, No. 6, November 1988

Early American Interest in Australian Minerals, by R. G. Middleton (Los Angeles County Museum of Natural History)

Lucy Birdsall

PACIFIC SECTION - AMERICAN ASSOCIATION OF PETROLEUM GEOLOGISTS

OFFICERS 1987 - 1988

President BEN CAHILL
(916) 452-7541
President Elect JACK CUNNINGHAM
(805) 658-8451
Vice President JOHN RANDALL
(805) 654-7034
Secretary RICK BOWERSOX
(805) 325-0750
Treasurer MARTY HALL-BURR
(213) 977-6284
Past President JACK H. WEST
(805) 321-6040

Newsletter Staff

Co-Editors LAURA BAZELEY
(805) 326-1112
JUDY RUSSELL
(805) 321-6197
Historical BILL RINTOUL
Legislation TOM WRIGHT

Associate Editors

Alaska RODGER STICKNEY
(907) 276-7600
Coast CORKY ISSLEHARDT
(805) 643-2154
Los Angeles Basin SEAN CAREY
(213) 946-6221
Northern California TOM MCKENNEN
(415) 842-0426
Pacific Northwest WILLIAM S. LINGLEY, JR.
(206) 459-6772
Sacramento VERN BENNETT
(916) 489-2333
San Joaquin BILL LONG
(803) 321-6041
Recommended Reading LUCY E. BIRDSALL
(818) 244-5117

NEWSLETTER of the Pacific Section - American Association of Petroleum Geologists Newsletter is published bimonthly by the Pacific Section. Material for publication, requests for previous copies, and communications about advertising costs should be addressed to JUDY RUSSELL, P. O. BOX 1072, BAKERSFIELD, CA 93302.

CHANGE OF ADDRESS, subscription, and membership inquiries should be directed to: MEMBERSHIP SECRETARY, PACIFIC SECTION AAPG, P. O. BOX 1072, BAKERSFIELD, CA 93302.

PUBLICATIONS COMMITTEE: Pacific Section - American Association of Petroleum Geologists, P. O. Box 631, Ventura, CA 93302.

DEADLINE FOR
OCTOBER/NOVEMBER
ISSUE
SEPTEMBER 30, 1989

BULK RATE
U.S. POSTAGE PAID
BAKERSFIELD, CA
PERMIT NO. 1163



PACIFIC PETROLEUM GEOLOGIST NEWSLETTER

*of the Pacific Section
American Association of Petroleum Geologists*

October & November 1989 No. 6

THE PRESIDENT'S COLUMN

I attended the Geothermal Resources Council Annual Meeting in Santa Rosa this past week. There were approximately 700 registrants and 46 exhibitors. Generally, there is a big international contingent but that wasn't as obvious this time. I suspect they may be saving their money for next year's meeting in Kona, Hawaii. Attending sessions or listening in on the discussions in the hallways, you could almost be in a petroleum meeting. This is no big surprise as the technology and objectives are the same. The geology tends to be more hard rock, with secondary mineralization and fractures being of prime concern. The Geysers is the major producer of dry steam in the world. However, falling production rates may be indicative of a very mature field that needs some help. Water injection seems to be the obvious choice to revitalize the field, but how much and how often are the questions to be answered. The sedimentary basins such as the Imperial Valley produce a very hot water that may be very high in mineral content (and more likely to cause production and disposal problems). Much of the hard rock drilling is with air while the hot water sedimentary formations are drilled with a very light mud (water with gel) or a combination of air and mud (foam) due to the very low formation pressures. The permitting problems seem all too familiar. A geothermal operator in Nevada has had a rig on location for three weeks while the powers to be decided what to do about the buckwheat (a wild weed) on location. The problems in Hawaii are monumental. Previously a group calling itself the Pele worshipers (Hawaii's fire goddess) claimed the drilling desecrated their religious practices. The County of Hawaii, the State and finally the U. S. Supreme Court threw out their petition as no such religion existed before the permitting began. They are now back as defenders of Hawaii's rainforest, although one lava flow does more damage than all the geothermal drilling ever will. Sounds like business as usual.

Another wrinkle has come up in California. The State air quality regulations have different standards for mobile and stationary engines. Drilling rigs fall under the classification of fixed engines with stringent air quality guidelines. Actually, this ruling has been in effect for a while. The counties have the option for enforcement on a selective basis, apparently. Recently, Merced and Sacramento Counties chose to exercise this option.

Hang in there, gang, we'll make it yet!

Ben Cahill, President

COMPRESSIONAL AND EXTENSIONAL STRUCTURAL STYLES IN THE NORTHERN BASIN AND RANGE

**November 17 - 18, 1989
Reno Nevada**

*Co-sponsored by the Nevada Petroleum Society
& Geological Society of Nevada*

Purpose

This program is intended to be a concise summary of prominent current structural theories, for the continuing education of exploration geologists in the minerals and petroleum industries.

Format

Equal time is scheduled for discussions of compressional and of extensional events. Speakers will stress both the differences and the similarities between various theories. Friday evening, before the all-day Saturday program, a dinner meeting talk will emphasize the utility of structural theory to applied geology. With forty minutes per presentation, participants will be exposed to more examples and discussion of field evidence than in the usual shorter format of convention symposia. Questions from the audience will be solicited for a speakers' panel to be seated after all presentations are completed. Printed proceedings of the seminar will include speakers' abstracts and selected figures. A price of approximately \$70 is anticipated.

Speakers and Topics

Michael L. Wilson, Senior Exploration Manager, Newmont Exploration - General overview of geologic history of the Basin and Range and mining and petroleum applications of structural theory.

B. Clark Burchfiel, Professor of Geology, Massachusetts Institute of Technology - Older compressional events, the Antler orogeny and tectonic setting.

Elizabeth L. Miller, Professor of Geology, Stanford University - Mesozoic compressional tectonics, intrusion and metamorphism in the Sevier hinterland.

Dietrich H. Roeder, Senior Exploration Geologist, The Anschutz Corporation - Thrust Belt of Central Nevada, Mesozoic compressional events and the implications of petroleum prospecting.

James Schmitt, Professor of Geology, Montana State University - Sedimentologic evidence for deformational episodes in the Mesozoic and Cenozoic

John M. Bartley, Professor of Geology, University of Utah - Sevier-age thrusting overprinted by Tertiary extension and structural styles in eastern Nevada and Western Utah

Arthur W. Snoke, Professor of Geology, University of Wyoming - History of thinking on Tertiary extensional tectonism, core complexes in the Basin and Range and a crustal cross section in northeastern Nevada.

Brian P. Wernicke, Professor of Geology, Harvard University - Extensional structural styles in southern Nevada and structural restorations in extensional terrains

Contact

NPS-GSN Structural Seminar '89, Nevada Petroleum Society, Post Office Box 71408, Reno, Nevada 89570-1408

San Joaquin

November 14 - Charlie Brown, Oxy USA, "It's Not Business as Usual - Anymore". This talk will review key environmental laws, events and why environmental management must be integrated into our "business as usual" work decisions to minimize future liabilities.

December 12 - Bob Hacker, Consultant, "Thrust Faults and Sedimentation Patterns in the Deeper Zones of Ventura Avenue Oil Field, Ventura Basin, and Their Effects on Oil Production and Future Potential in the Field".

January 9 - Jay Namson, Davis & Namson Consulting Geologists, "Balanced Cross Sections as an Aid to Exploration in California."

The meetings are held at the American Legion Hall at 2020 "H" Street in Bakersfield. Attitude adjustment starts at 6:00 p.m. and dinner is served at 7:00 p.m. For more information and reservations contact Bob Lewy at (805) 321-4163.

Suggestions for talks for meetings should be addressed to Bill Long at (805) 321-6041.

DAVIS & NAMSON Consulting Geologists

1545 North Verdugo Road, Room 09
Glendale, CA 91208 U.S.A.
(818) 507-6650

Petroleum Exploration, Seismic Risk,
Tectonics and Basin Studies, Balanced
Cross Sections (Courses & Consulting)

DR. THOM DAVIS

DR. JAY NAMSON

Los Angeles

The meetings will continue to be held at noon at Luminaria's Restaurant in Monterey Park. For reservations or information, call Elaine Weed at (213) 894-3097 or Jim Grant at (213) 894-7404.

Coast

November 21 - Cathy Rigsby, Long Beach State, "Vaqueros Formation, Western Transverse Ranges".

December 19 - Perry Ehlig, California State, Los Angeles, "Stabilization of the Portuguese Bend Landslides and Palos Verdes, California".

January 16 - To be announced.

February 20 - Bonnie Bloeser, San Diego State, "Cyclo-stratigraphy of the Monterey Formation".

March 20 - Kevin Biddle, Exxon, AAPG Distinguished Lecturer, "Basin Evolution Along Active Transform Margins".

Meetings are held the third Tuesday of every month. Meeting time is at 6:00 p.m., dinner at 7:00 p.m. at the American Legion Hall in Ventura. The address is 83 South Palm. For reservations please contact Susan Lewis at 805/656-7600 - Extension #192 or Lauren Irvine at 805/654-7032.

Northern

November 14 - Paul Kvenvolden, USGS, Menlo Park, "Prince William Sound Marine Geology and Geochemistry: Ongoing Study to Evaluate the Effects of the Valdez Oil Spill".

December 12 - Allan Edwards, California Energy Commission, "Greenhouse Effects: Possible Implications for the State of California - Policies Being Considered and Response to Climatic Warming".

January 17 - Matt Golembach, JPL - Cal. Tech., "Moons of Jupiter as Seen from Voyager II".

For information and reservations, please contact Lydia Mendoza at (415) 842-3117.

COMING EVENTS

November 7 to 9 - Pacific Coast Oil Show and Conference, Bakersfield. Call Petro-Tech Expositions at (312) 922-1270.

November 13 to 15 - AAPG Short Course: Development Geology, Denver, Colorado.

November 17 to 18 - Nevada Petroleum Society, Geological Society of Nevada Structural Seminar. See front page for more information.

June 3 to 6, 1990 - National AAPG Meeting, San Francisco.

July 29 to August 3, 1990 - Circum - Pacific Energy and Mineral Resources Conference, Honolulu.

March 6 to 8, 1991 - Pacific Section AAPG Convention, Bakersfield, Dan Schwartz, Chairman (Shell, Western).

April 29 to May 1, 1991 - Pacific Section AAPG Convention, Sacramento, Rich Boyd, Chairman (Capitol Oil).

NEW MEMBERS

SOUTHERN CALIFORNIA

Christopher M. Schwartz - Fullerton; Patricia A. Donnelly - Groundwater Technology, Ventura; Andrew L. Evans - Chevron USA, Ventura; Brian M. McCord - Groundwater Technology, Ventura; Carlos A. Diaz - Grant-Norpac, Bakersfield; John F. Dunn - Chevron USA, Bakersfield; Richard E. Herrimann - Chevron USA, Bakersfield; Bryan W. Joyce - Texaco Trading & Transportation, Bakersfield; Thomas Farley - Chevron USA, Bakersfield; Kenneth C. Gester - Chevron USA, Bakersfield; James M. Evensen, Jr. - Thousand Oaks

NORTHERN CALIFORNIA

Douglas Imperato - Moss Beach; Robert B. Christy - Chevron USA, San Ramon

OTHER STATES

Paul J. Harrison - Fall-Line Exploration, Denver, Colorado; Philip N. Trumbly - ARCO Alaska, Anchorage

GEOTECHNICAL TOUR TO NEW ZEALAND

Dr. Jack Green with California State Long Beach is organizing a geotechnical tour to New Zealand on January 4 through 20, 1990 under the sponsorship of Par Avio Travel, Inc. The trip will emphasize on the volcanological highlights of North Island and the glaciology of South Island with minor emphasis on gold mineralization, metamorphic facies and Alpine fault structure. A helicopter trip to the fumarolically-active White Island and visits to the underground workings of the Waihi gold mine and famed Auckland lava tube have specific geological objectives. Likewise, in South Island the tour will take mini-hikes on glaciers and to exposures of the Alpine fault. Tourist highlights include glowworm caves, Roturua powerplants and Milford Sound. Photograph opportunities should be outstanding.

The tour will have the full cooperation of the New Zealand Geological Survey via the Department of Scientific and Industrial Resources during the tour. Visitors to New Zealand do not need a visa but your United States passport must be valid for a period not less than six months beyond January 7 (or the date you leave New Zealand).

The cost of the sixteen day trip including all tour related air and coach travel and all subsistence exclusive of liquor is \$4,650 and includes round trip air fare from Los Angeles to Auckland and all transportation within New Zealand. In addition, the tour price includes all hotel accommodations based on double occupancy, transfers and tours as specified, luggage handling throughout, meals as specified, all entrance fees and any applicable taxes. Space is available for forty people. Please let us know if you think you might attend. Guests are welcome!

For further information please contact Par Avion Travel, Inc. at 6033 West Century Boulevard, Suite 780, Los Angeles, California 90045 or telephone (213) 670-2970.



NEW PROPRIETARY STUDIES

CALIFORNIA COASTAL BASINS STUDY

WINTERS FM. & FORBES FM. STUDIES

WESTERN CANADIAN BEAUFORT SEA STUDY

N.E. ALASKA OFFSHORE WELL STUDIES

MICROPALÉO

CONSULTANTS, INC.

681 Encinitas Blvd. • Suite 312 • Encinitas, CA 92024 • Telephone (619) 942-6082

RECENT MOVES

Stephen P. Buck has transferred from Bakersfield to Dallas with Mobil.

Brian J. Casey has transferred to Aberdeen, Scotland from Bakersfield with Occidental.

Alfonso M. Escalante has transferred from Jackson, Mississippi to Lafayette, Louisiana with Unocal.

Cretles D. Jenkins, Jr. has joined ARCO in Bakersfield, formerly with Tenneco.

Wallace A. Jensky has moved from Goleta to Thousand Oaks.

Mark P. Muir has moved from Encino to Walnut Creek.

Curtis A. Peck has transferred from San Ramon to Bakersfield with Chevron.

Janice Thompson has moved to Long Beach City College, formerly with the U.S.G.S. in Menlo Park.

Alan Trujillo has moved from Santa Barbara to San Diego.

Paul Aue has moved to San Francisco with Hart Crowser from Newport Beach.

Nancy B. Aston has moved from Ventura to Encino.

Robert W. Bogle has moved from Denver to Dallas with Maxus Exploration.

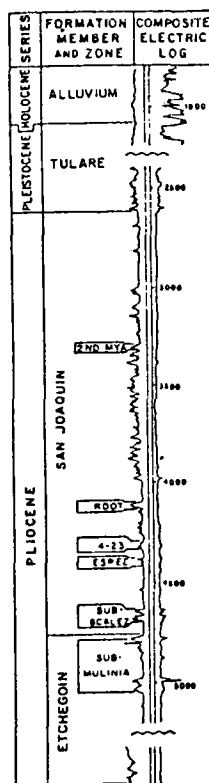
Robert Beer has moved to Southwest Engineering in Huntington Beach, formerly with Cerveza Associates in Encinitas.

Scott Dennett has moved from Bakersfield to Wasilla, Arkansas.

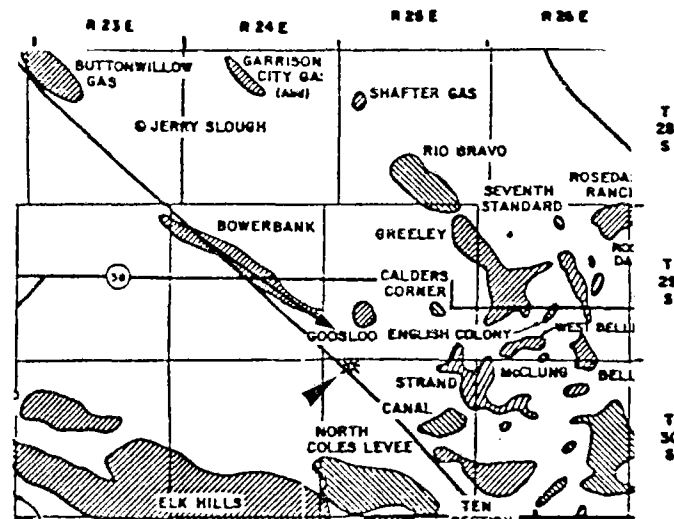
James O. Kistler has transferred from London, England to San Ramon with Chevron.

Robert C. Orlando is now with LOK Environmental in Bakersfield, formerly with ARCO.

BOWERBANK



ARCO DISCOVERS GAS FIELD NEAR I-5



ARCO has found a new gas field near the junction of Stockdale Highway and Interstate 5 about fourteen miles west of Bakersfield.

The discovery well is the Bluejay No. 1. Details of the completion have not been disclosed, but according to field sources, the well flowed at a rate in excess of 2 million cubic feet per day of gas.

Completion of the well proves up production two miles southeast of the Bowerbank field, a 1942 discovery by Texaco's predecessor, The Texas Company. Cumulative production stands at approximately 14.3 billion cubic feet of gas at Bowerbank.

The pay sand in the ARCO well reportedly is the Etchegoin, which is also productive at Bowerbank. ARCO took the well to approximately 5,100 feet. The drill site is on the northeast quarter of Section 6, T30S, R25E. H. L. Camp Drilling Company handled the drilling job with Rig No. 5.

Bill Rintoul

MARTIN VAN COUVERING STUDENT AWARD

Background

Previous to 1972, a safety fund had been jointly collected by the Pacific Sections of AAPG, SEPM, and SEG as a hedge against a financially disastrous Convention, which had unfortunately occurred at least twice in past years. An amount of \$5,000 was deposited as a joint account to be used only in case of emergency. The fund was handled by the AAPG. Enlightened financial control kept the Joint Conventions solvent, however, and the fund just sat accruing interest.

In 1972, then President of the Pacific Section AAPG Hestor proposed the joint proceeds from the interest to be used to fund a perpetual Student Award in the honor of Martin Van Couvering, California Geologist Emeritus. The proposal was seconded by Treasurer Hallinger.

This Award predated the AIPG Martin Van Couvering Service Award by ten full years. It is significantly different in several ways: first, it was a student award, a concept very dear to the heart of Martin; second, it was a joint award from both AAPG, SEPM and SEG; third, it was initiated while Martin was still with us.

The MVC Award was set in motion in May of 1972.

Martin Van Couvering Award Guidelines

The original proposal was intended to create additional interest among students of geology in attending meetings, field trips and conventions of the Pacific Section. The award was to be given to deserving students and would be presented at the Annual Convention or field trips.

It was decided the heads of the various departments of geology throughout the Pacific Section Area would be the most capable committeemen to select individual awardees.

The Award Committee Chairman has historically been the Past President of the Section. It was his duty to contact those department heads in the area of the Convention or field trip and ask for candidates.

The number of candidates was limited only by the amount of the money to be allocated out of accrued interest from the fund, the size of each individual award to reflect living costs.

The Award

An award certificate was prepared. Each awardee was publicly presented this certificate at the appropriate meeting. In addition to the certificate, an amount of money was presented to help defray the living and travel expenses the student may incur. This was usually in the form of a check from the Section, and mailed to the awardee before the meeting, along with a personal congratulatory letter and instructions from the Committee Chairman.

Other inducements such as free registrations, free guidebooks, free field trips of the student's choice, etc., were left to the discretion of the MVC Award Committee Chairman and the local Convention Committee.

Each Convention absorbed these costs as part of the Convention proceeds, thereby creating a continual funding of activities not covered by the award check itself, significantly increasing the value of the award. The student would be provided with a pre-registration student packet with the various items or tickets enclosed, which could be picked up at the Meeting.

Recent History

Regimes which change on a regular basis and are manned strictly on a volunteer basis tend to reinvent the wheel each year and the award has unfortunately been presented only sporadically.

To correct this oversight, a decision was made to turn the program over to the SEPM which has always had a much closer tie to the source of students and department heads.

There is presently over \$14,000 in the fund. Interest alone from this amount would allow many students to receive the award. This year, the past interest is now part of the principle and it is suggested the the present principle be maintained as it now is for the sake of future awardees.

The amount of money sent to the awardee should reflect current cost rates.

Richard L. Hester

SIX CANDIDATES ANNOUNCED FOR EXECUTIVE COMMITTEE

Candidates for AAPG's 1990 - 1991 offices have been announced by the AAPG Executive Committee. Ballots will be mailed to the membership in the spring of 1990. The nominees are:

PRESIDENT-ELECT

Don R. Boyd
Independent Geologist
& Oil Operator
Corpus Christi, Texas

Robert J. Weimer
Consulting Geologist
Golden, Colorado

VICE PRESIDENT

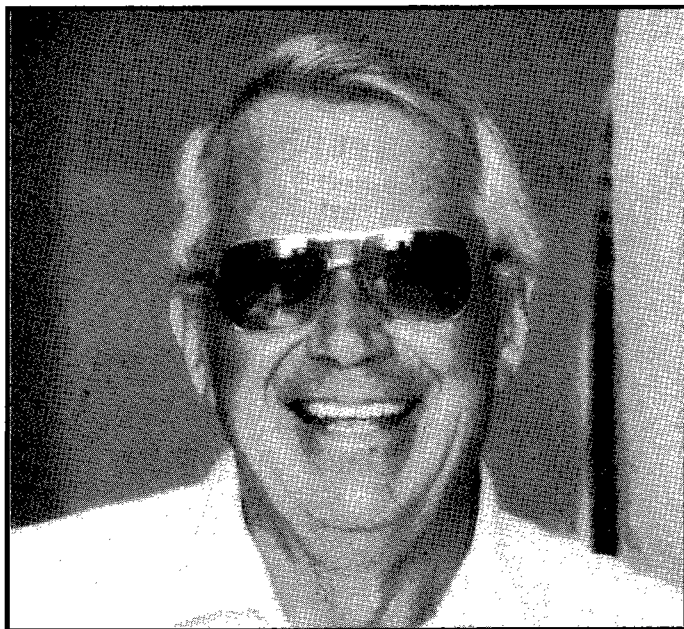
David G. Campbell
Consulting Geologist
Oklahoma City, Oklahoma

Lee C. Gerhard
State Geologist & Director of the
Kansas Geological Survey
Lawrence, Kansas

TREASURER

Edward K. David
Consulting Geologist
Roswell, New Mexico

Robert G. Lindblom
Staff Development Geologist,
Chevron USA
San Ramon, California



JAMES M. EVENSEN, PH.D.

1931 - 1988

Chair of California Lutheran University's geology department since 1963, Professor James M. Evensen died on Saturday, December 24, 1988, from a heart attack. Fifty-seven year old Evensen was much loved by the CLU community and highly regarded by his students - he was voted professor of the year four times.

In addition to his teaching duties, Evensen was a dedicated servant to CLU serving on both the presidential and dean search communities and volunteering to guide field trips to the National Parks for the Community Leaders Club and other groups. Evensen was also a significant force behind many grants and scholarships for the geology department and its students, including grants from Shell Oil Company, Texaco Inc., Union Oil Company of California Foundation and the two most recent major grants from the Lon V. Smith Foundation of Beverly Hills, both for \$100,000.

Professionally, he was a member of the Geological Society of America, American Geological Institute, National Association of Geology Teachers, Coast Geological Society, Society of Economic Paleontologists and Mineralogists and the American Association of Petroleum Geologists. He also served on the Board of Regents for a sister Lutheran institution in Blair, Nebraska, Dana College and on the Board of Directors for Mesa, a geological consulting firm in La Crescenta.

Evensen received his bachelor of arts degree in economics from the University of Minnesota in 1955. He completed his post graduate work at the University of Arizona receiving his master's in geology in 1961 and his doctorate in geology in 1969.

He is survived by his wife, Helen, and children Katherine Ann Marty of Sacramento, James M., Jr., of Camarillo and Jill of San Diego.

Memorial services were held at Ascension Lutheran Church and Cal Lutheran. A memorial fund has been established. Contributions may be sent to The Evensen Memorial Fund, California Lutheran University, Sixty West Olsen Road, Thousand Oaks, California 91360.

REQUEST FOR PAPERS & FIELD TRIP GUIDEBOOK PREPARATION

The BLM under the guidance of Gregg Wilkerson is planning three field trips next year for the public. The tentative dates and approximate locations are listed below. The BLM is soliciting help for preparation of the guidebooks and invites papers to be included in the guidebooks.

January 20, 1990

San Andreas Fault - Carrizo Plains to Gorman

April 7 - 8, 1990

Kern Canyon to visit mines. Locations include Keyesville, Havilah, Piute Mountain. A barbeque is planned for Saturday night.

July 14 - 15, 1990

Morro Bay. The trip will cover the Nacimiento Fault, Salinian Block, and Morro Rock.

For more information, please contact Gregg Wilkerson at the BLM office in Bakersfield (805/861-4191).

STATE BOARD OF REGISTRATION FOR GEOLOGISTS & GEOPHYSICISTS

Five hundred geologists just completed the registration exam for geologists. Traditionally forty percent pass the exam, according to Jim Weddle (San Joaquin Energy), Chairman of the Board of Registration. Tentatively it was decided by the Board to give the exam every nine months. If you fail the exam be sure to request a review of the exam.

The number of geologists taking the exam has increased in recent years for a number of reasons. State law requires that you must be registered to practice geology or to call yourself a geologist. The recent loss of jobs in the oil industry has resulted in an increase in the number of consultants. In addition, the growing environmental business has increased the need for registered geologists. A registered geologist is required to sign reports submitted to a state or local government agencies.

For information regarding exam schedules, registration applications, or exam results contact the State Board (914/445-1920). Completion of the application for the exam is time consuming so start early.

EXPLORATION AND LITERATURE ON OIL AND GAS IN OREGON SUMMARIZED

After nearly ninety years of oil and gas exploration, Oregon today has over 350 wells and a producing natural gas field. Exploration efforts and published studies during those years have been summarized and listed in two new publications from the Oregon Department of Geology and Mineral Industries (DOGAMI).

Hydrocarbon Exploration and Occurrences in Oregon, by DOGAMI Petroleum Engineer Dennis L. Olmstead, has been published as DOGAMI Oil and Gas Investigation 15 (OGI-15). The seventy-eight page publication contains introductory discussions of the history of oil and gas exploration in Oregon, the sedimentary basins of the State, and the Mist Gas Field, Oregon's only producing field.

These texts are followed by two tables listing available information about all known oil and gas wells and hydrocarbon occurrences in the State and in federal waters offshore. Grouped by county, the individual wells list names of the wells and of their present and past operators, locations, drilling dates and depths, notes that may include information on the method of drilling, the geology, hydrocarbon shows and references in the literature.

Two additional tables present gas analyses from certain wells and water analyses made on samples from exploratory wells.

While OGI-15 lists, in its bibliography, only the references mentioned in the text and tables, a comprehensive bibliography by the same author is contained in the DOGAMI Open File Report O-89-10. This report, **Bibliography of Oil and Gas Exploration and Development in Oregon, 1896 - 1989**, is intended to serve as a supplement to OGI-15. Comprising thirty-three pages, its author list includes approximately 750 citations and is followed by a county index listing cross-references for citations associated with a particular county.

Oil and Gas Investigations sells for \$7, Open File Report O-89-10 for \$5.

Both publications are now available at the Oregon Department of Geology and Mineral Industries, 910 State Office Building, 1400 SW Fifth Avenue, Portland, Oregon 97201-5528. Orders may be charged to credit cards by mail, fax or telephone. Their FAX number is (503) 229-5639. Orders under \$10 require prepayment except for credit card orders.

IGC FIELD TRIP GUIDEBOOKS

The Field Trip Guidebooks, published by the American Geophysical Union, are thorough handbooks to the latest geological knowledge of distinct geographic regions in North America. Written for both the specialist and nature enthusiast, these books contain road logs, describe geologic features, provide historical information and discuss the geologic processes operating in the region. Guidebooks are illustrated with drawings, photos and geologic maps. Some of the more comprehensive Guides include rock formation descriptions, chemical compositions, stratigraphic sections and cross sections. Guidebooks of Alaska, California, Nevada, Oregon and Washington are listed below:

- Modern Clastic Depositional Systems of South-Central Alaska (T101), \$21.00
- Quaternary Geology and Permafrost Along the Richardson and Glenn Highways Between Fairbanks and Anchorage, Alaska (T102), \$21.00
- Alaskan Geological and Geophysical Transect (T104), \$28.00
- Glaciers and Glaciology of Alaska (T301), \$21.00
- Accreted Terranes of the North Cascades Range, Washington (T307), \$21.00
- Geologic Evolution of the Northernmost Coast Ranges and Western Klamath Mountains, California (T308), \$21.00
- The San Andreas Transform Belt (T309), \$28.00
- Oil in the California Monterey Formation (T311), \$21.00
- South Cascades Arc Volcanism, California and Southern Oregon (T312), \$21.00
- Quaternary Volcanism of Long Valley Caldera and Mono-Inyo Craters, Eastern California (T313), \$13.00
- Geology of San Francisco and Vicinity (T105), \$21.00
- Cenozoic Volcanism in the Cascade Range and Columbia Plateau, Southern Washington and Northernmost Oregon (T106), \$21.00
- Tectonics of Northern California (T108), \$21.00
- Mesozoic and Cenozoic Siliceous Sediments of California (T109), \$21.00
- Sedimentation and Tectonics in Coastal Southern California (T110), \$21.00

AAPG members receive a 20% discount off of the listed price. Send orders with check or credit card number to AGU Orders, 2000 Florida Avenue, Northwest, Washington, D. C. 20009

ResTech Reservoir Evaluation Services

- **DIPMETER ANALYSIS**
Structural and Stratigraphic processing
Expert interpretation
Resurrection of old dipmeters from raw data prints.
- **TAPE CONVERSIONS AND EDITING**
All service companies - any tape format
Current or discontinued types - 7 and 9 track
- **EXPERT PETROPHYSICAL ANALYSIS**
Custom models tied to core analysis
Any logging suite - modern or old

For more information, please call
BUZZ DELANO in Bakersfield at (805) 325-3987 or
HAROLD CRAWFORD in Ventura at (805) 653-1579

2151 Alessandro
Suite 110
Ventura, CA 93001
(805) 653-1579
FAX: (805) 653-0580



5401 Business Park South
Suite 210
Bakersfield, CA 93309
(805) 325-3987
FAX: (805) 322-7193

BYLINES

The National Inholder News, a publication dedicated to protecting the rights of those with an interest in federally managed land and to promote, preserve and enhance the multiple use concept of this nation's publicly-owned lands, recently exposed the true nature of the Sierra Club, the "Yogurt Eaters for Wilderness."

It reported the results of a January 1989 demographic survey of Sierra Club members.

The statistics offer a fascinating - and useful - profile of the membership of the United States' third largest (over 165,000 members) and third wealthiest (over \$8.5 million income) environmental pressure group, one that consistently maintains that its callous campaigns for coercive political power "represent the public interest."

How representative of the public is the Sierra Club? Not very. The image of the average Sierra Clubber presented by its own statistics is someone lily-white, highly educated, pretty wealthy and approaching middle age (the average is 43.8 years).

A total of 77% of Sierra Club members own their own homes (versus 70% of the U.S. population at large). But the average value of these homes is \$187,300 - that's twice the U. S. average.

Sierra Clubbers are non-representative in other ways too. A total of 49% of Sierra Club members hold managerial or professional jobs (twice the U. S. percentage of the public) and 17% make \$100,000 or more each year (that's 7 times the rate for the public at large).

They are inveterate consumers. They are especially fond of technological gadgetry like home computers, car stereos, VCR's and compact disc players - all this despite an official bias against all technology and progress.

And they buy "toys" they don't use too. Over 46% own skis but only 40% actually go skiing. A total of 36% own fishing gear but only 21% use it. A total of 78% own sleeping bags but just over 50% ever go camping.

Perhaps their philosophy of "waste not" and "small is beautiful" is meant to apply just to everyone else.

According to their own survey, only 62% of Sierra Clubbers actually do any hiking - but that's still 10 times the U. S. rate of 6%. So much for the "public interest" in making more places exclusive for backpackers.

Only 5% of Sierra Clubbers are hunters - which may help explain those campaigns to ban hunting on all public lands. But here are the really important statistics. Last year, 56% of all Sierra Club members wrote letters to their Senators, Congressman and other elected or public officials, only 6.2% of the rest of us did. In addition, 13% of those Sierra Clubbers went and visited those officials, compared with 3.9% of the rest of us non-members.

Also, 87% of them voted in the last election - only 48% of us did that. How does a small "fringe" group like the Sierra Club manage to control public policy in a country of 240 million people? Part of the answer - maybe a large part - is in those statistics above. They communicate and we don't. They write and visit their elected public officials and we don't. They write letters to the editor and they vote - for the most part we don't.

Most of us expect our national, state, even local governments to operate on a sort of "automatic pilot" to represent us and our best interests automatically, without our having much to say about it. The Sierra Club, Friends of the Wilderness, Audubon Society and other conservationists of that ilk know better. They know that government responds to those who complain the loudest - and they have been complaining a lot, loud and long.

And we have made their job even easier by not saying anything at all.

If we are going to have some influence on the U. S. Forest Service, on the U. S. Fish and Wildlife Service, on the creeping lock-up of timberlands into wilderness areas, on the logging prohibitions due to the "threatened" Spotted Owl, etc., etc., we are going to have to take back control of our country. We are going to have to follow the same pattern as the preservationists.

It's time we, the public, started making some noise of our own in the "public interest."

Ev Bey

Reprinted from the "Chester Progressive"
Chester, California

CORE REPOSITORY

The California Well Sample Repository needs locations for the following wells:

Logan Ridge #3
McCulloch "Freeport" #1
McGowan "A-fee" 2-5
Monterey "McGinley" #1
Mobil "W.B.E." #15
Ohio "Gardena" 1-4
Penn Oil "Angyal" #1
Rheem "Occidental" #2
Richfield "Walker" #1
Shell-Bartolo "Unit One" -1
S. I. Corp. "S. S. Airport" #1
Sig-Mont "Reclamation" #3
Sig-Mont "Reclamation" #7
Signal "R. I. L. - M. C. N." L-1
Signal-Honolulu-Mac "ROSC" #1
Solar Basin "Cecid Assoc."
BCH #1
BM-1
Standard 20-6 and 53
"Creek Comm." #1
Sunray-Midcentral "Bear Creek"
Unit #1
Sunray
23-11
"Belco-Stoute" #1
"Franco RV Unit" B-1
"Scott Grade Valley" #1
"Steitsen-Sombrero" #1
Suntile "New Fed." #1
Superior "Black" #5
Superior "Cauley" 87-34
Terminal Oil "Saulsbery" #1
Texaco-Conoco
"KLC" #1
"KLC" #2
Union
"Hartman" #1
"PS" #1

Please contact Larry Knauer at (805) 664-2324 if you can help.

IRS CHANGES "TAR SANDS" CREDIT DEFINITION

The IRS has adopted the following tar sands definition:

"The several rock types that contain an extremely viscous hydrocarbon which is not recoverable in its natural state by conventional oil well production methods including currently used enhanced recovery techniques. The hydrocarbon-bearing rocks are variously known as bitumen-rocks, oil impregnated rocks, oil sands and rock asphalt."

RECOMMENDED READING

GEOLOGY

Vol. 17, No. 7, July 1989

Southern Extension of the Independence Dike Swarm in Eastern California, by E. W. James

South Arch Volcanic Field - - Newly Identified Young Lava Flows on the Sea Floor South of the Hawaiian Ridge, by P. W. Lipman, D. A. Clague, J. G. Moore and R. T. Holcomb

Recognition of Jurassic Transport of Rocks on the Roberts Mountains Allochthon: Evidence from the Sonoma Range, North Central Nevada, by S. D. Stahl

AAPG BULLETIN

Vol. 72, No. 8, August 1989

Estimated Potential for Small Fields in Mature Petroleum Province, by J. C. Davis and T. Chang

Petroleum Formation by Fischer-Tropsch Synthesis in Plate Tectonics, by P. Szatmari

Secondary Migration of Oil: Experiments Supporting Efficient Movement of Separate, Buoyant Oil Phase Along Limited Conduits, by H. Dembicki, Jr. and M. J. Anderson

NATIONAL GEOGRAPHIC

Vol. 176, No. 8, August 1989

The Quest for Oil, by F. Hapgood with photographs by G. Steinmetz

U. S. GEOLOGICAL SURVEY

B 1823: Methods for Sampling and Inorganic Analysis of Coal, edited by D. W. Golightly and F. O. Simon, \$4.25

P 1453: An Album of Map Projections, by J. P. Snyder and P. M. Voxland with an introduction by J. L. Morrison, \$14.00

C 0900: Guide to Obtaining U.S.G.S. Information, compiled by K. Dodd, H. K. Fuller and P. F. Clarke (second revision), free

TWI 02-F1: Application of Drilling, Coring and Sampling Techniques to Test Holes and Wells, by E. Shuter and W. E. Teasdale, \$4.75

P 1399: Geology and Exploration of the National Petroleum Reserve in Alaska, 1974 to 1982, edited by G. Gryc (940 pages, 58 pages in separate case), \$91.00

B 1852: Toward a Federal Land Information System, Experiences and Issues, by J. A. Sturdevant, \$1.75

C 1024: California's Unique Geologic History and its Role in Mineral Formation with Emphasis on the Mineral Resources of the California Desert Region, by D. A. Dellinger, free

Map MF 1964: Map Showing Late Quaternary Faults and 1978 to 1984 Seismicity of the Los Angeles Region, California, by J. I. Ziony and L. M. Jones, \$1.50

Map I 1828: Geologic Maps of the Pacific Palisades Area, Los Angeles County, by J. T. McGill, 1989, \$6.70

GEOLOGICAL SOCIETY OF AMERICA BULLETIN

Vol. 101, No. 7, July 1989

Ikaite, $\text{CaCo}_3 \cdot 6\text{H}_2\text{O}$ Precursor of the Thonolites in the Quaternary Tufus and Tufa Mounds of the Lahontan and Mono Lake Basins, by D. J. Shearman, A. McGugan, C. Stein and A. J. Smith

Drainage Development on the Basaltic Lava Flows, Cima Volcanic Field, Southeast California and Lunar Crater Volcanic Field, Southcentral Nevada, by J. C. Dohrenwend, A. D. Abrahams and B. D. Turrin

Lucy Birdsall

PACIFIC SECTION - AMERICAN ASSOCIATION OF PETROLEUM GEOLOGISTS

OFFICERS 1989 - 1990

President BEN CAHILL
(916) 452-7541
President Elect JACK CUNNINGHAM
(805) 658-8451
Vice President JOHN RANDALL
(805) 654-7034
Secretary RICK BOWERSOX
(805) 325-0750
Treasurer MARTY HALL-BURR
(213) 977-6284
Past President JACK H. WEST
(805) 321-6040

Newsletter Staff

Co-Editors LAURA BAZELEY
(805) 326-1112
JUDY RUSSELL
(805) 321-6197
Historical BILL RINTOUL
Legislation TOM WRIGHT

Associate Editors

Alaska RODGER STICKNEY
(907) 276-7600
Coast DALTON LOCKMAN
(805) 494-2205
Los Angeles Basin SEAN CAREY
(213) 946-6206
Northern California MARK MOON
(415) 842-0478
Pacific Northwest WILLIAM S. LINGLEY, JR.
(206) 459-6772
Sacramento VERN BENNETT
(916) 489-2333
San Joaquin BILL LONG
(803) 321-6041
Recommended Reading LUCY E. BIRDSALL
(818) 244-5117

NEWSLETTER of the Pacific Section - American Association of Petroleum Geologists Newsletter is published bimonthly by the Pacific Section. Material for publication, requests for previous copies, and communications about advertising costs should be addressed to JUDY RUSSELL, P. O. BOX 12021, BAKERSFIELD, CA 93399-2021.

CHANGE OF ADDRESS, subscription, and membership inquiries should be directed to: MEMBERSHIP SECRETARY, PACIFIC SECTION AAPG, P. O. BOX 1072, BAKERSFIELD, CA 93302.

PUBLICATIONS COMMITTEE: Pacific Section - American Association of Petroleum Geologists, P. O. Box 631, Ventura, CA 93302.

**DEADLINE FOR
DECEMBER/JANUARY
ISSUE
NOVEMBER 30, 1989**

NEWSLETTER

Pacific Section A.A.P.G.
P. O. Box 1072
Bakersfield, CA 93302

FORWARDING AND RETURN POSTAGE GUARANTEED

**BULK RATE
U.S. POSTAGE PAID
BAKERSFIELD, CA
PERMIT NO. 1163**



PACIFIC PETROLEUM GEOLOGIST NEWSLETTER

*of the Pacific Section
American Association of Petroleum Geologists*

December 1989 & January 1990 No. 1

THE PRESIDENT'S COLUMN

Although it's six months away, the 1990 AAPG Annual Convention Committee is busily putting together what we all hope will be a meeting to match the 1981 San Francisco Convention. Everyone who attended the last San Francisco Convention had a great time. There were 12,000 attendees which made for a very intimate Ice Breaker. The Moscone Convention Center should provide us with more room.

Convention Chairman, Jim Baroffio of Chevron USA, Inc., and the rest of his Committee are well underway with this project. The Pacific Section and the Northern California Geological Society are host societies for this annual event to be held in San Francisco on June 3 through 6, 1990, with the NCGS carrying most of the load. A grateful thank you should go to Chevron and the USGS for providing the majority of the Committee Members.

The Pacific Section of the AAPG will be involved with several field trips as well as a short course on one of the hot topics around. Consultant Tom Wright is in charge of field trips and has set up three trips to be sponsored by the Pacific Section AAPG and one trip co-sponsored by the Pacific Section AAPG and SEPM. Trip one will be a one day trip of the "Napa/Sonoma Wine Region" with a fair emphasis on the wine segment of the trip. Field trip two, a post session three day trip, will include an overnight stay at Yosemite and will continue on to the "Geology of the Mother Lode Gold Belt". This trip will tour through some of California's historical past - Sonora, Columbia, Angel's Camp, San Andreas, Jackson, Sutter Creek, etc. Trip three is entitled "Onshore and Offshore Santa Cruz Basin", a two day post session trip that includes an overnight stay in Monterey as well as a private tour of the spectacular Monterey Bay Aquarium. The jointly sponsored (AAPG/SEPM) trip will be the "Geology of the San Joaquin Basin". This three day trip will start in Bakersfield (East Side) and work up through the West Side (Taft, Elk Hills, Kettleman Hills, Coalinga) and end up in San Francisco in time to start the Convention. The short course has been arranged through the efforts of Hans Schwing (UNOCAL) and will be a one day course on horizontal drilling. This will be a technical sessions for non-engineers (such as lawyers, accountants and geologists). This short course will cover the how, when or where of horizontal drilling. This technology is becoming a boom in certain areas and this course will probably be well attended. All of you AAPG members will be receiving your Convention packet in the mail. Non-members, **PLEASE JOIN!** Hope to see you at the 1990 Annual Convention of the AAPG in San Francisco, June 3 through 6, 1990.

(Does Bo know tennis??)

Ben Cahill, President

SAN FRANCISCO MEETING UPDATE

The October 17 earthquake in California has had little effect on planning for the AAPG Annual Meeting, scheduled for San Francisco on June 3 to 6, 1990.

Planners said housing and meeting activities will center mainly in the Union Square and Moscone Convention Center areas, which were relatively unshaken by the quake. There has been no indication of major structural difficulties at the ten hotels where AAPG has reserved room blocks.

Meanwhile, San Francisco Annual Meeting Committee members and the AAPG Convention Department will continue to monitor the situation and make appropriate changes as warranted.

**TWENTY-TWO
TO RECEIVE
HONORS
AT
SAN FRANCISCO
CONVENTION**

See Page 5

San Joaquin

January 9 - Jay Namson, Davis & Namson Consulting Geologists, "Balanced Cross Sections as an Aid to Exploration in California."

February 13 - Spouse's Night, Jim Barnett, JPL (Deep Space Section), title to be announced.

March 13 - Leslie Magoon, U.S.G.S., "Arctic National Wildlife Refuge - Petroleum Potential in One of the Last Alaskan Frontiers".

April 10 - Joint SPE Meeting, Steve Sanford, topic to be announced.

The meetings are held at the American Legion Hall at 2020 "H" Street in Bakersfield. Attitude adjustment starts at 6:00 p.m. and dinner is served at 7:00 p.m. For more information and reservations contact Bob Lewy at (805) 321-4163.

DAVIS & NAMSON Consulting Geologists

1545 North Verdugo Road, Room 09
Glendale, CA 91208 U.S.A.
(818) 507-6650

Petroleum Exploration, Seismic Risk,
Tectonics and Basin Studies, Balanced
Cross Sections (Courses & Consulting)

DR. THOM DAVIS

DR. JAY NAMSON

Coast

January 16 - To be announced.

February 20 - Bonnie Bloeser, San Diego State, "Cyclo-stratigraphy of the Monterey Formation".

March 20 - Kevin Biddle, Exxon, AAPG Distinguished Lecturer, "Basin Evolution Along Active Transform Margins".

Meetings are held the third Tuesday of every month. Meeting time is at 6:00 p.m., dinner at 7:00 p.m. at the American Legion Hall in Ventura. The address is 83 South Palm. For reservations please contact Susan Lewis at 805/656-7600 - Extension #192 or Lauren Irvine at 805/654-7032.

Northern

January 17 - Matt Golembach, JPL - Cal. Tech., "Moons of Jupiter as Seen from Voyager II".

For information and reservations, please contact Lydia Mendoza at (415) 842-3117.

Los Angeles

The meetings will continue to be held at noon at Luminaria's Restaurant in Monterey Park on the **third Thursday of every other month.**

January 18 - John Langard, Leighton and Associates, Irvine, California, "Environmental Geology Applied to the Remediation of Ground Water Contaminated with Jet Fuel A".

March 15 - Dr. Lucille M. Jones, U. S. G. S., "The Loma Prieta Earthquake of October 1, 1989".

For reservations or information, call Elaine Weed at (213) 894-3097 or Jim Grant at (213) 894-7404.

LABGS 1990 OFFICERS

The following are the new LABGS officers for 1990:

President

Steve Townsend
Engineering Enterprises

Vice President

Steve Testa
Engineering Enterprises

Secretary

Brigitte Berman
THUMS

Treasurers

Randall Ferguson
Consulting Geologist

Ken Malch

THUMS

Program Chairman

Sean Carey
UNOCAL

Field Trip Committee

Terry Adcock
UNOCAL

Jeannine Lamar

Don Lamar
Lamar & Associates

COMING EVENTS

February 15 and 16 - Fourth Annual Winter Natural Gas Symposium, Newport Beach. For information contact Ms. Katherine L. Holstrom at the Oil Daily (800/368-5803 or 202/662-0700).

March 14 to 16 - Cordilleran Section GSA Meeting, Tucson, Arizona.

April 29 to May 1 - CIPA's Fourteenth Annual Meeting, Santa Barbara.

May 7 to 10 - Offshore Technology Conference, Houston, Texas.

June 3 to 6 - National AAPG Meeting, San Francisco.

June 17 to 20 - Society of Professional Well Log Analysts (SPWLA), Lafayette, Louisiana.

July 29 to August 3 - Circum-Pacific Energy and Mineral Resources Conference, Honolulu.

September 9 to 12 - Giant Oil and Gas Field of the Decade, Stravenger, Norway.

September 23 to 26 - Society of Petroleum Engineers (SPE), New Orleans, Louisiana.

September 23 to 27 - Society of Exploration Geophysicists (SEG), San Francisco.

October 29 to November 1 - National GSA Meeting, Dallas, Texas.

March 6 to 8, 1991 - Pacific Section AAPG Convention, Bakersfield, Dan Schwartz, Chairman (Shell Western Exploration and Production, Inc.).

April 29 to May 1, 1991 - Pacific Section AAPG Convention, Sacramento, Rich Boyd, Chairman (Capitol Oil).

SAN JOAQUIN WELL LOGGING SOCIETY MEETINGS

January 21 - To be announced.

February 21 - To be announced.

March 21 - Al Brown, Chevron (retired), "Lithology from Well Logs - A Different Approach".

April 18 - To be announced.

May 16 - To be announced.

All meetings are held from 11:30 a.m. to 1:00 p.m. at Bill Lee's Bamboo Chopsticks, 1203 Eighteenth Street, Bakersfield.

LARGE REFINERY UP FOR GRABS ON U. S. WEST COAST

Now may be the last chance for years to acquire a sizable refinery on the U. S. West Coast - a virtually irreplaceable asset in a key growth market. Even so, the apparently fancy price tag of around \$900 million touted for independent refiner Tosco is not as sharp an escalation as it looks from prices paid for other West Coast Refiners. The 126,000 barrel a day refinery is being sought by several multi-national firms and Tosco is considering possible deals. Simply adding Tosco's debts to the purchase price and subtracting the value of other assets leaves a \$700 million value for the Avon, California plant. Ultramar was viewed as paying top dollar when it paid Union Pacific \$440 million for its slightly small but higher quality Wilmington, California facility. But consultants Purvin and Gertz reckon on a comparison of simple distillation capacity and complexity factors that Avon is cheaper than the Wilmington plant. Using the actual higher throughput capacities, Tosco at \$900 million looks slightly more expensive than Wilmington, but cheaper than small California refineries bought last year.

All other refineries of this size are owned by major players, and environmental concerns preclude building new plants in the fastest growing gasoline market in the U.S. So Tosco should attract interest from a broad spread of suitors, especially those with access to Alaskan North Slope crude, the refinery's primary feedstock. But estimated future environmental investments of \$100 million tend to limit the field. The refinery needs new hardware to meet future California fuel quality standards. A further complication lies in Tosco's complex links with ARCO, which may also limit its appeal. For those seeking crude outlets, ARCO poses a problem in that it has a 50,000 barrel per day crude-for-gasoline swap with Tosco, good through 1996 and renewable at ARCO's option through 2006. ARCO also holds an option to buy the plant for \$100,000 more than the highest bid.

from PI Weekly

RECENT MOVES

Bill Long transferred from Bakersfield to Houston, Texas with Oxy USA Inc.

Dave Fowler transferred to Midland, Texas from Bakersfield with Oxy USA Inc.

Joe Davidson with Oxy USA Inc., Bakersfield, has joined Bechtel.

Jack West, Dan Collins, Chuck McCullough, Ron Huckaby and Cal Parker have taken early retirement from Oxy USA Inc., effective January 1, 1990.

H. Ralph Pegors, formally with a major wireline service company for over thirty years in California and Oregon, is now consulting and is based in Long Beach, California.

Peter Supko has joined Ninyo and Moore Environmental Consultants as a General Manager of the Irvine office.

Dan Long has moved to Ventura from Bakersfield with Halliburton Logging Services.

Mike Johns and Steven L. Hart have moved to Bakersfield from Ventura with UNOCAL.

Lynn Gray has moved from Anchorage to Bakersfield with UNOCAL.

George Freitag has moved from Northridge to Las Vegas, Nevada.

Steven Buck has moved to Dallas from Bakersfield with Mobil.

James Blankenship has moved to Houston from Denver with Phillips Petroleum.

NEW MEMBERS

SOUTHERN CALIFORNIA

Joseph P. Schaaf - Chevron USA, Inc., Ventura; **Tom D. Fassio** - Bakersfield; **David R. Hill** - UNOCAL, Bakersfield; **Robert H Sterling** - Nahama and Weagant, Bakersfield.

NEW PROPRIETARY STUDIES

CALIFORNIA COASTAL BASINS STUDY

WINTERS FM. & FORBES FM. STUDIES

WESTERN CANADIAN BEAUFORT SEA STUDY

N.E. ALASKA OFFSHORE WELL STUDIES



681 Encinitas Blvd. • Suite 312 • Encinitas, CA 92024 • Telephone (619) 942-6082

WHAT'S IN A NAME?

At the suggestion of many members (who shall remain nameless) we're compiling a list of name changes in our industry. These changes can be the result of takeovers (Gulf - Chevron) or the whims of a public relations firm (Sun - Oryx). These are some of the more recent changes.

FORMER

Getty*
Gulf*
Cities Service*
Superior*
Tenneco
Sun E & P
Diamond Shamrock
Belridge
Depco Inc.
Husky*
Celeron Corp.*
Marathon Petroleum Co.*

PRESENT

Texaco
Chevron
Occidental
Mobil
Various (British Gas, ARCO, Shell)
Oryx
Maxus
Kernridge Oil Co. (Shell)
DeKalb Petroleum
Marathon Petroleum Co.
Exxon USA
U. S. Steel

* Takeovers

ASSOCIATION OF WOMEN GEOSCIENTISTS FOUNDATION OFFERS CHRYSALIS SCHOLARSHIPS

The Association of Women Geoscientists Foundation (AWGF) is pleased to announce that they will be giving **two \$300 scholarships** on March 1, 1990. The Chrysalis will be given to two women geoscience Masters of Ph.D. candidates to cover expenses needed to complete a thesis. Candidates must have returned to school after an interruption in their education of one year or longer. The support can be used for typing, drafting, child care expenses or anything necessary to allow a degree candidate to finish her thesis and enter a geoscience profession.

Last year's recipient was Diane Bellis, a doctoral candidate in geochemistry at the New Mexico Institute of Mining and Technology and the mother of four. She received her Ph.D. in geochemistry last May and is currently an AAAS Fellow responsible for U. S. Science Policy in Africa and Latin America under the Department of State in Washington, D. C.

Applications should be made by January 31, 1990 and sent to the Foundation. For more information or applications, please write: Chrysalis Scholarship, Association of Women Geoscientists Foundation, c/o Resource Center for Associations, 10200 West 44th Avenue, Wheat Ridge, Colorado 80033.

The applicant should write a letter stating her career goals and objectives, describing how she will use the money, and explaining the length and nature of the interruption to her education. Her thesis advisor must submit a letter stating when the candidate will finish her degree and what requirements are as yet unfinished. This letter should also include reference to the applicant's prospects for future contributions to the geosciences. Two additional letters of recommendation are required.

IDLE WELLS AND GAS WELL SPACING: TARGETS OF PROPOSED 1990 LEGISLATION

Addressing the Conservation Committee in Long Beach last week, Division of Oil and Gas Director Marty Mefford presented the yet-to-be-introduced bills. One aimed at the natural gas producing industry and the other toward wells idle five years or more. Briefly the recommendations are:

Gas Well Spacing (Actual Language): "The producing interval of any well drilled after January 1, 1991, for the purpose of exploring for, developing and producing natural gas shall not be less than 330 feet from an outer boundary of the parcel of land on which the well is drilled, unless the supervisor determines, after a public hearing, that a closer set-back is needed to develop adequately the pool or protect the correlative rights."

Idle Wells Summary: Briefly, the idle well legislation would apply to the operator of any crude oil and natural gas well that, for a consecutive five year period, does not produce commercial quantities for a continuous six month period. Commercial quantities are defined as two barrels per day or 10,000 cubic feet of natural gas per day.

An annual fluid level survey would be required for the targeted wells to determine if the wells are contaminating drinking water.

Further, operators would be required to fulfill one of the following:

- o File an indemnity or cash bond of \$5,000 (current bonding costs run about ten percent, if available).
- o File a blanket indemnity or cash bond for \$100,000 to cover all applicable wells.
- o File an annual fee of \$100 per well. All revenues would be credited to the Division of Oil and Gas' hazardous and idle well assessment fund.

Mefford explained that California currently has more than 9,000 wells, by Division of Oil and Gas records, that have not seen production in over ten years. "If these wells were not produced in the times of high prices, we do not believe that realistically they will soon be put back on production," he said.

from CIPA Monday Morning Report

ResTech Reservoir Evaluation Services

- **DIPMETER ANALYSIS**
Structural and Stratigraphic processing
Expert interpretation
Resurrection of old dipmeters from raw data prints.
- **TAPE CONVERSIONS AND EDITING**
All service companies - any tape format
Current or discontinued types - 7 and 9 track
- **EXPERT PETROPHYSICAL ANALYSIS**
Custom models tied to core analysis
Any logging suite - modern or old

*For more information, please call
BUZZ DELANO in Bakersfield at (805) 325-3987 or
HAROLD CRAWFORD in Ventura at (805) 653-1579*

2151 Alessandro
Suite 110
Ventura, CA 93001
(805) 653-1579
FAX: (805) 653-0580



5401 Business Park South
Suite 210
Bakersfield, CA 93309
(805) 325-3987
FAX: (805) 322-7193

LETTER TO THE EDITORS

I was edified neither geologically, professionally, nor politically by the piece reprinted from Chester's "Progressive" newspaper (October-November PPGN), and I fail to see why space was wasted on it. It's no news that Sierra Club members do not represent a cross section of the U.S. population; neither do the members of AAPG. Each group embraces some interests which are congruent with the general good (healthy ecosystems, abundant energy supply) and others which are purely selfish (personal recreational opportunities, financial profit).

Printing of this article in PPGN appears to identify petroleum geologists as the "we" who should set ourselves firmly against the "Sierra Club . . . and other conservationists of that ilk." Why intensify polarization? We need energy, and we need recreation and clean water, so let's approach the situation with something better than name-calling.

The tension between development and preservation is with us to stay. PPGN readers will be better served by articles which present constructive conflict resolutions instead of airing old prejudices.

Kenneth E. Telleen
Conoco, Inc.
Houston, Texas

Editor's Note:

We feel that the PPGN should be used as a forum for our members. We freely solicit articles and publish most of what is sent to us without editorial comments or censorship. The article from the Chester Progressive referred to in the "Letter to the Editors" was given to us by one of the members of the Executive Committee.

We enjoy a good debate among our readers and hope to continue providing fuel for the fire.

PETROLEUM CHIEF BLASTS
ADMINISTRATION

H. B. "Bud" Scoggins, Jr., is clearly unhappy with Congress.

As the 101st Congress recessed until 1990, Scoggins, President of the Independent Petroleum Association of America, had this to say about Congress' final actions as they affect the domestic petroleum industry and the American energy consumer:

"It seems rather ironic that Congress and the Administration would support both the Superfund Petroleum Tax Provision and the Voluntary Restraint Agreement in the same measure.

In the former, the domestic petroleum industry is penalized through a tax provision that increases the tax on domestic oil from 8.2 cents to 9.7 cents per barrel, while decreasing the tax on imported oil from 11.7 cents for 9.7 cents per barrel. In the latter, the steel industry is protected by quotas on imported steel.

With a single stroke of the pen, the President will sign into law a bill that further penalizes an industry - the petroleum industry - that has all but been destroyed by imports. The irony of this bill is that it also seeks to undo the damage that has been done to the steel industry by artificially inexpensive imports.

It is difficult to understand the priorities within this bill because, quite frankly, no one remembers the last time that this nation was driven into an economic tailspin due to a steel embargo.

Are the memories of the oil embargoes of 1973 and 1979 - most economically disastrous embargoes of any peacetime - that dim?"

The Independent Petroleum Association of America, which Scoggins heads, was founded in 1929. The national association represents nearly 10,000 independent oil and natural gas explorers and producers - wildcatters - in all 33 states with oil and natural gas production.

Bill Rintoul

TWENTY-TWO TO RECEIVE
AAPG HONORS IN JUNE

Twenty-two persons will receive the Association's highest honors and awards during the opening session of the AAPG Annual Meeting on June 3, 1990 in San Francisco.

AAPG annually recognizes and awards members and others for outstanding service to the profession and to the Association. Those to be honored in San Francisco are:

SIDNEY POWERS MEMORIAL MEDAL

John T. Galey,
an independent geologist in Somerset, Pennsylvania, a fourth generation oil-finder, was instrumental in the formation of the AAPG Eastern Section, authored and presented numerous papers and has served in various AAPG capacities.

JOURNALISM AWARD

William Rintoul,
long-time freelance writer and author covering the oil and gas industry, including a long career writing a daily oil new column for the *Bakersfield Californian* newspaper.

J. C. "CAM" SPROULE MEMORIAL AWARD

Richard J. Hubbard,
for "Age and Significance of Sequence Boundaries on Jurassic and Early Cretaceous Rifted Continental Margins".

ROBERT H. DOTT, SR. MEMORIAL AWARD

Peter A. Ziegler,
for "Evolution of the Arctic-North Atlantic and the Western Tethys".

WALLACE E. PRATT MEMORIAL AWARD

Charles D. Winker and Richard T. Buffler,
for "Paleogeographic Evolution of Early Deep-Water Gulf of Mexico and Margins, Jurassic to Middle Cretaceous (Comanchean)".

SPECIAL AWARD FOR EXCELLENCE
EXPLORATION LEADERSHIP

John F. Bookout, Jr.

MICHEL T. HALBOUTY HUMAN NEEDS AWARD

Hans Diefer Knipping

PUBLIC SERVICE AWARD

Cyril J. Perusek

DISTINGUISHED SERVICE AWARDS

James A. Helwig
Michael E. Hriskevich
Lewis Stanley Pittman
William H. Roberts III
Edward C. Roy
Nahum Schneidermann
Richard Steinmetz

HONARARY MEMBERSHIP AWARDS

Andrew D. Baillie
Donald L. Blackstone
William L. Fisher
Gerald M. Friedman
John W. Shelton
Larry D. Woodfork

RECOMMENDED READING

GEOLOGY

Vol. 17, No. 10, October 1989

Numerical Modeling of Folding in Rotational Strain Histories: Strain Regimes Expected in Thrust Belts and Shear Zones, by J. Ridley and M. Casey

Tethys, Thetis, Thethys or Thetys: What, Where and When Was It?, by E. T. Tozer

Stretching Faults, by W. D. Means

Aptian Anoxia in the Pacific Basin, by W. V. Slter

Earthquakes Triggered by Fluid Extraction, by P. Segall

CALIFORNIA GEOLOGY

Vol. 42, No. 7, July 1989

Ancestral Klamath River Deposits at Gold Bluffs Prairie Creek Redwoods State Park, Humboldt County, California, by J. H. Trexler, Jr.

New California State Mining and Mineral Museum (Mariposa)

Chestermanite: A New Mineral, Fresno County, California, by J. T. Alfps

The Fifteen Most Significant Earthquakes in U. S. History

First Diamond Find in California - When and Where?, by R. W. Kopf

Vol. 42, No. 9, August 1989

Four Geological Special Interest Areas: Central Sierra Nevada Eldorado National Forest, Alpine, El Dorado and Placer Counties, by L. K. C. Lubetkin

Sacramento, The Early Days, 1939 to 1876, by M. C. Woods

Natural History Museums in California, compiled by M. El-Bdour

Vol. 42, No. 9, September 1989

A Neotectonic Tour of the Death Valley Fault Zone, Inyo County, by C. J. Wills

Index to Graduate Theses and Dissertations on California Geology, 1983 and 1984, compiled by J. M. Skov and T. A. Lindquist

Vol. 42, No. 9, September 1989

Importance of Industrial Minerals in Everyday Life, by H. McVey

Significant Earthquakes, January through June 1989

GEOLOGICAL SOCIETY OF AMERICA BULLETIN

Vol. 101, No. 10, October 1989

Sedimentation, Sea-Level Change and Tectonics on an Early Pleistocene Continental Shelf, Northern California, by E. L. Leithold and J. Bourgeois

Volcanogenic Upwelling of Anoxic, Nutrient-Rich Water: A Possible Factor in Carbonate-Bank/Reef Demise and Benthic Faunal Extinctions, by P. R. Vogt

Late Cretaceous Juxtaposition of Metamorphic Terranes in the Southeastern San Gabriel Mountains, California, by D. J. May and N. W. Walker

The Mesozoic Rimrock Lake Inlier, Southern Washington Cascades: Implications for the Basement to the Columbia Embayment, by R. B. Miller

Structure Across a Mesozoic Ocean-Continent Suture Zone in the Northern Sierra Nevada, California, Special Paper 224, by S. H. Edelman, H. W. Day, E. M. Moores, S. M. Zigan, T. P. Murphy and B. R. Hacker, 1989, Geological Society of America, P. O. Box 9140, Boulder, Colorado 80301 for \$15.00 postpaid, soft cover.

Lucy Birdsall

PACIFIC SECTION - AMERICAN ASSOCIATION OF PETROLEUM GEOLOGISTS

OFFICERS 1989 - 1990

President BEN CAHILL
(916) 452-7541
President Elect JACK CUNNINGHAM
(805) 658-8451
Vice President JOHN RANDALL
(805) 654-7034
Secretary RICK BOWERSOX
(805) 325-0750
Treasurer MARTY HALL-BURR
(213) 977-6284
Past President JACK H. WEST
(805) 321-6040

Newsletter Staff

Co-Editors LAURA BAZELEY
(805) 326-1112
JUDY RUSSELL
(805) 321-6197
Historical BILL RINTOUL
Legislation TOM WRIGHT

Associate Editors

Alaska RODGER STICKNEY
(907) 276-7600
Coast DALTON LOCKMAN
(805) 494-2205
Los Angeles Basin SEAN CAREY
(213) 946-6206
Northern California MARK MOON
(415) 842-0478
Pacific Northwest WILLIAM S. LINGLEY, JR.
(206) 459-6772
Sacramento VERN BENNETT
(916) 489-2333
San Joaquin BILL LONG
(803) 321-6041
Recommended Reading LUCY E. BIRDSALL
(818) 244-5117

NEWSLETTER of the Pacific Section - American Association of Petroleum Geologists Newsletter is published bimonthly by the Pacific Section. Material for publication, requests for previous copies, and communications about advertising costs should be addressed to JUDY RUSSELL, P. O. BOX 12021, BAKERSFIELD, CA 93389-2021.

CHANGE OF ADDRESS, subscription, and membership inquiries should be directed to: MEMBERSHIP SECRETARY, PACIFIC SECTION AAPG, P. O. BOX 1072, BAKERSFIELD, CA 93302.
PUBLICATIONS COMMITTEE: Pacific Section - American Association of Petroleum Geologists, P. O. Box 531, Ventura, CA 93302.

**DEADLINE FOR
FEBRUARY/MARCH
ISSUE
FEBRUARY 1, 1990**

NEWSLETTER

**Pacific Section A.A.P.G.
P. O. Box 1072
Bakersfield, CA 93302**

FORWARDING AND RETURN POSTAGE GUARANTEED

437 DA AM HO
RICHARD L. HESTER
1911 MONTECITO DR.
GLENDALE, CA 91208

**BULK RATE
U.S. POSTAGE PAID
BAKERSFIELD, CA
PERMIT NO. 1163**