



PACIFIC PETROLEUM GEOLOGIST NEWSLETTER

of the Pacific Section
American Association of Petroleum Geologists

FEBRUARY/MARCH 1984

PRESIDENT'S CORNER . . .

"You tell me whar a man gits his corn pone en I'll tell you what his 'pinions is"
— Mark Twain.

Assemblyman Bates (D-Oakland) has predictable opinions about the oil business. He is pulling maneuvers to get his 6% severance tax bill passed with only a majority vote rather than the normally required two-thirds. The strategy is to couple the tax with equal sized tax decrease so only a simple majority is needed for passage. A legislative counsel's opinion supports this view. They all get their corn pone out of the public trough.

By the time this column appears, the matter will have been decided by the Assembly and possibly even the Senate. Our best hope is the Governor's veto.

This severance tax is in addition to all other taxes — property, windfall profit, state and federal income, local severance, DOG Assessment and various other local fees. Other states that have severance taxes exempt oil production from some of these other taxes.

Those of us in petroleum economics are especially cognizant of the devastation that would be wrought upon our business by the Bates' bill. Many marginal properties would be shut-in. High cost steam flood projects would be jeopardized.

Perhaps the most unfair aspect is that Kern County would be by far the hardest hit county as it produces 60% of the state's oil. Bates generously plans to exempt the first 100 barrels a day and reimburse local government for their loss in property taxes. With 600,000 barrels a day of production, we would send about \$790,000 a day to Sacramento. Do you think that Kern County would get much of that back? Do you believe in the tooth fairy?

James R. Weddle

PAC. SEC. PLANS BBQ

The Pacific Section AAPG annual picnic and field trip is planned for June 1 in the Wrightwood area. Golf and tennis tournaments will be held at the same time. The Los Angeles Basin Geological Society is leading a field trip covering Slide Mountain, The Fault, and other stops of interest in the Miocene of Cajon Pass. Following the field trip will be a deep-pit barbeque. An announcement with the price, time, and location map will be mailed to members later this spring. **Please mark your calendars!**

PAC. SEC. LISTS HONORARY MEMBERS

The Honorary Member program was begun in 1961 to recognize those Pacific Section members who have contributed distinguished service to the cause of petroleum geology.

The following people are recipients of Honorary Member status:

- 1961 Olaf P. Jenkins (deceased)
- 1962 Graham B. Moody (deceased)
- 1962 Homer J. Steiny (deceased)
- 1963 Walter A. English (deceased)
- 1964 Martin Van Couvering (deceased)
- 1965 Harry R. Johnson (deceased)
- 1965 Alfred Woodford, Prof. of Geology Emeritus, Pomona College, Claremont, CA 91711, (714) 626-1540
- 1966 William P. Winham, 2441 Cedar Street, Bakersfield, CA 93301
- 1966 Frank A. Morgan (deceased)
- 1968 E. Robert Atwill (deceased)
- 1968 E. Fred Davis (deceased)
- 1968 Robert M. Kleinpell, 5900 Encino Rd. #3, Goleta, CA 93117
- 1969 Mason L. Hill, Ph.D. '32 Wisc., Consultant, 14067 E. Summit Dr., Whittier, CA 90602
- 1969 Ian Campbell (deceased)
- 1970 William F. Barbat, B.S. '26 UCB, Research Associate, California Academy of Science, Golden Gate Park, San Francisco, CA 94118, (415) 221-5100, (Res.) 547-2057
- 1970 Thomas L. Bailey (deceased)
- 1970 Stanley G. Wissler, M.A. '23 Columbia University, Consulting Geologist, 4245 Chestnut Avenue, Long Beach, CA 90807, (213) 424-2381
- 1971 Harold W. Hoots (deceased)
- 1971 John C. Hazzard (deceased)
- 1972 Frank S. Parker, 712 Fair Oaks Avenue, South Pasadena, CA 91030
- 1974 J. Douglas Traxler, M.A. '47 UCLA, Brea Oil Company, 12655 W. Washington Blvd., Suite 106, Los Angeles, CA 90066, (213) 390-8603, Res. 454-5256
- 1974 John E. Kilkenny, A.B. '35 UCB, Consulting Geologist, 1120 So. Fourth Street, Alhambra, CA 91801, (213) 289-2429
- 1974 Gordon B. Oakeshott, Ph.D. '36 USC, Consulting Geologist, 3040 Totter-

dell Street, Oakland, CA 94611, (415) 530-5595

- 1974 Henry H. Noel, A.B. '34 Stanford, Consulting Geologist, Henry H. Neel & Associates, 727 W. 7th Street, Los Angeles, CA 90017, (213) 622-6968, Res. 472-0659
- 1975 Kenneth H. Crandall, A.B. Stanford, Consultant, 209 Crocker Avenue, Piedmont, CA 94610, (415) 547-4148
- 1976 R. Stanley Beck, 621 Truxtun Avenue, Bakersfield, CA 93301
- 1977 Edwin H. Stiremeyer, Jr., 131 Wetherly, Bakersfield CA 93309
- 1978 Thomas W. Dibblee, Jr., 316 E. Mission Street, Santa Barbara, CA 93101, (805) 962-3664
- 1979 Lucy E. Birdsall, '50 University of Connecticut, Inquires Specialist — U.S.G.S., Federal Bldg., Rm. 7638, 300 N. Los Angeles Street, Los Angeles, CA 90012, (213) 688-2850
- 1982 Ted L. Bear, '40 UCLA, Consulting Geologist, Bear & Kistler, 540 Sespe Street, Fillmore, CA 93015, (805) 542-3252, Res. 542-4240
- 1982 Victor Church, Ph.D. University of Chicago, Consultant, 3120 18th Street, Bakersfield, CA 93301, (805) 325-5924, Res. 322-8167
- 1983 Thomas A. Baldwin, B.A. '43 USC, Consultant, 2184 Crescent Drive, Altadena, CA 91001, (213) 798-4556
- 1983 Arthur S. Huey, Ph.D. '40 UCB, Retired, 1126 Ladera Drive, Long Beach, CA 90807, (213) 427-6996

If there are any corrections to this list, please contact Betty Bean, AAPG Pacific Section membership secretary.

U.N. Law Of The Sea Treaty

EDITOR'S NOTE: The following letter was sent on November 1, 1983. In addition to President Reagan, letters were sent to Senators Cranston and Wilson.

Dear President Reagan:

The 1500 members of the Pacific Section, American Association of Petroleum Geologists (AAPG), urge you to support the present United States' position on the U.N. Law of the Sea Treaty.

(continued on page 2)

Law Of The Sea

(continued from page 1)

After extensive study, particularly of the issues concerning natural resources, AAPG has taken the following stand:

"AAPG agrees with the U.S. Government's position that it is not in the best interest of the U.S.A. or any other coastal country to ratify the Law of the Sea Treaty. AAPG believes that the Treaty as presently written does not protect the resources of coastal countries, and that the boundaries as presently constituted in the Treaty are not geologically sound."

Also, provisions in the Treaty for transfer of technology to all countries would abrogate patent rights, deny American and other companies the fruits of their creative efforts, and thus stifle future research and development in marine science.

We are concerned that legislation to create a National Ocean Policy commission (H.R. 2853 and S.1238) might reopen the subject of U.S. ratification of the Law of the Sea Treaty. Should this legislation move forward, we ask you to advise Congress that the Commission is to consider the Treaty as a closed issue.

Finally, we urge your support of legislation (S.750 and H.R. 2061) establishing the U.S. Exclusive Economic Zone as proclaimed by you last March. The EEZ provides a workable alternative to the ill-conceived Law of the Sea. AAPG will continue to work with Congress and the Administration in devising geologically-sound criteria for offshore boundaries.

If you would like further details regarding the AAPG position on these most important matters, don't hesitate to contact me. We, individually and collectively, are available for consultation at any time. Please call us.

Sincerely,

James R. Weddle
President

ABSTRACTS OF SPEAKERS

San Joaquin Geological Society

January 10, 1984: "*Structural and Stratigraphic Interpretation of Seismic Data Across Drape Folds in the Rocky Mountain Foreland*", by Jack Gallagher, Occidental.

Many folds in the Wyoming Foreland are basement involved. Seismic, well, map data and outcrops show that these folds are located over faults in the Precambrian crystalline basement. The folds have been called by various names including "D - structures," "trap-door features," "forced folds" but "drape folds" is a widely accepted term. Drape folds are attractive targets for hydrocarbon exploration because they involve several play types which can be documented in

Montana, Wyoming, Colorado and elsewhere. Oil is produced from the classical anticlinal traps along drape-fold crests. In addition, oil is found in fractured reservoirs in the steeply dipping limb. Gas is produced from unconformities and pinchouts of post Eocene sediments associated with the drape-fold anticlinal crest. Oil is produced from Paleozoic sediments within the Laramide folds. Traps in these sediments could be a result of the Laramide age development of the fold but stratigraphic changes suggest that the fault in the basement was periodically activated by orogenic episodes affecting the Wyoming Foreland during the Paleozoic and Mesozoic. A colorful example in Dinosaur National Monument is dinosaur bones in a Mississippian sand bar which may have been localized by gentle movement on a basement fault. The beds are now part of the steep limb of a drape fold.

Recognizing that drape folds occur in a basin provides a method for constructing maps which help extrapolate between seismic lines and consequently can be an important exploration tool.

February 14, 1984: "*The Future of Natural Gas*", by Richard E. Wyman.

See abstract below in Northern California Geological Society section.

March 13, 1984: "*Timing of Tertiary Submarine Canyons and Marine Cycles of Deposition in the Southern Sacramento Valley, Calif.*", by A. A. Almgren, Union Oil.

The Tertiary sedimentary rocks of the southern Sacramento Valley, California, include three marine cycles of deposition that were similar in their development. Each cycle began with a marginal marine to marine sand transgression followed by subsidence to bathyal depths and then a shoaling of varying amounts. A fourth and last cycle began with shallow marine deposition, but this soon gave way to nonmarine deposition.

Each cycle of deposition was preceded by a period of tectonism and erosion, and three of the cycles were also preceded by the cutting of a canyon, which was subsequently filled by marine sediment. The three submarine canyons and their provincial ages are:

1. The Martinez Canyon, cut in late early to middle Paleocene and filled in early late Paleocene time.
2. The Meganos Canyon, cut and filled in latest Paleocene time.
3. The Markley Canyon, cut in early Oligocene (early Refugian) and filled in late Oligocene (late Refugian) to early Miocene time.

The filling of each submarine canyon preceded a new cycle of deposition, and the timing of the development of these canyons in relation to the cycles of deposition is apparently related to the tectonic activity of central California and its borderland.

Northern California Geological Society

February 15, 1984: "*The Future of Natural*

Gas", by Richard E. Wyman, Canadian Hunter Exploration Ltd.

The future demand for natural gas in the world will depend in part upon the credibility of long-term supply along with an appreciation of its versatility as a source of energy. Natural gas has the potential to make many countries in the world including the United States and Canada self-sufficient in energy.

In addition to favorable reserves from conventional sources, there are enormous quantities of recoverable gas in unconventional resources. Such resources include tight gas formations, shales, coal seams, peat, geopressed water, ultra-deep sediments, hydrates, and biomass. New markets for natural gas are expected to expand in several areas; these include transportation, cogeneration, select use in utilities, and fuel cells.

An understanding of how gas can replace other fuels along with an appreciation of the incredible resource base leads to a much brighter outlook for the world energy future than we imagined even a few years ago.

March 6, 1984: "*Origin of Dolomite and Its Spatial and Chronological Distribution — A New Insight*", by Miriam Kastner, Scripps Institution of Oceanography.

One of the oldest problems in sedimentology is the origin of dolomite. Dolomite, $\text{CaMg}(\text{CO}_3)_2$, is one of the most common sedimentary carbonate minerals. Its density is 2.866, and calcite's density is 2.710. The absolute abundance of dolostones, as well as the dolostone/limestone ratio, increase with geologic age. Changes in sea water magnesium concentration were invoked to explain these observations. During the last 30 years, for both scientific and economic reasons, many attempts were made to explain the scarcity of recent dolomites. Carbonate rocks composed mainly of dolomite generally have high porosities, and are important reservoir rocks for oil.

Dolomite is the thermodynamically stable carbonate phase in sea water. Its relative scarcity in recent marine carbonate sediments, therefore, cannot be explained simply by the thermodynamic properties of dolomite; dolomite formation seems to be inhibited by sea water. Most sedimentologists assumed that the formation of dolomite is mainly controlled by the dissolved magnesium/calcium ($\text{Mg}^{2+}/\text{Ca}^{2+}$) ratio in sea water; the molar $\text{Mg}^{2+}/\text{Ca}^{2+}$ ratio in sea water is 5.3. It was therefore assumed that dolomite formation requires a still higher ratio. This explanation, however, had to be abandoned, when primarily during the last 2 to 3 years, dolomite was observed as an important constituent of many modern marine organic-rich sediments; for example, in the California borderlands, Gulf of California, the Japan Trench, Cariaco basin off the coast of Venezuela, and the Solar Lake in Israel. In the Guaymas basin, for example, dolomite activity forms from pore fluids with $\text{Mg}^{2+}/\text{Ca}^{2+}$ ratios of 1 to 2. Similar dolomite formed in the Miocene Monterey Formation, either as penecontem-

poraneous or early diagenetic nodules or as laminated dolomite. The $\delta^{18}O$ values of these dolomites range from -6 to $+7\text{‰}$ (PDB), and their $\delta^{13}C$ values range from -30 to $+20\text{‰}$.

Experiments conducted recently in our laboratory have shown that the important condition of dolomite formation is not high Mg^{2+}/Ca^{2+} ratios, but low dissolved sulfate (SO_4^{4-}) content, which inhibits dolomite formation; sea water contains 28 mM SO_4^{2-} . Dolomitization of calcite is already inhibited at sulfate concentrations of approximately 5 to 7% of sea water value. Aragonite dolomitization, however, although strongly retarded at these low dissolved SO_4^{2-} concentration values is inhibited at sulfate concentrations of approximately 50% of sea water's value. We have also shown that dolomitization of $CaCO_3$ proceeds through protodolomite, a calcium-rich disordered dolomite which would transform to dolomite if equilibrium were established. Dissolved SO_4^{2-} also retards the rates of protodolomite transformation to dolomite and dedolomitization.

Sulfate ions adsorbed to the surfaces of calcite, dolomite, or aragonite may affect the kinetics of phase transformations in the carbonate system. In a sulfate-depleted environment, sulfate is rapidly desorbed; at 15° to $35^\circ C$, the process is completed in one to two days.

Thus favorable sites for dolomite formation in the marine environment are those where dissolved SO_4^{2-} concentrations are low. The most effective processes of sulfate removal from or its dilution in marine pore fluids are microbial reduction in organic-rich sediments and mixing of sea water with large amounts of fresh water. This happens, for example, in continental margin sediments with high rates of deposition, as in the Gulf of California, or in deeper water sediments associated with black shales. The presence of much dissolved SO_4^{2-} in sea water also explains the almost absence of dolomite in apparently highly favorable environments, for example, in open marine carbonates.

The relative paucity of dolomite-rich carbonate rocks (dolostones) formed during the last 100 to 120 million years, as compared with their abundance in older sediments, in particular in the Precambrian and early Paleozoic, could be explained on the basis of changes in the depositional environments and in the carbonate mineralogy of the primary calcareous sediments. These differences do not necessarily reflect changes in seawater concentrations.

WELL SAMPLE REPOSITORY

The California Well Sample Repository has received word from Art Spaulding, Vice President and General Manager of the Western Oil & Gas Association, that the member companies of WOGA are making gifts for a second building at the Repository. It was the original gifts of the members of WOGA in 1975 which made possible the first building

and brought the Repository into existence. The original building rapidly is being filled, and a second building is needed to alleviate both temporary and permanent storage problems. The Repository Board gratefully acknowledges the gift.

The response to the letter sent out in early December suggesting Memorial or Honorary gifts to the Repository Endowment Fund was rewarding both in the number of contributors and the amount. We thank each of you for your thoughtfulness and generosity. Of course, donations anytime during the year will be welcome!

Duplicate material of slabbed cores is available on request. (Cores are slabbed both to provide a better surface for visual inspection as well as to reduce storage volume.) For information, call or write the Repository at Cal State Bakersfield, 9001 Stockdale Highway, Bakersfield, CA 93309; (805) 833-2324.

An attractive wall plaque with the names of all donors, now totalling over 150 companies, organizations, and individuals, will soon be permanently on display in the Repository. We hope your name is on it, but if it isn't, it's not too late since we have provided adequate space for all additional contributors.

This is *your* facility — we invite you to use it — often!

Victor Church

In Memory of Olaf P. Jenkins

Olaf P. Jenkins, 94, of Pasadena Grove, California, retired consultant, Bradberry Associates, died October 19. Many Pacific Section members will remember him as the former chief geologist (1929-47) and chief mineralogist (1947-58) of the California Division of Mines and Geology and the author of *Early days — memoir and Building a state geological survey, California 1928-58*. When Jenkins first joined the Division, it was a statistical bureau dealing almost exclusively with mining — when he left it was recognized as one of the foremost. He was made an honorary life member of the AAPG and fellow of the California Academy of Sciences.

Change of Address

Danuta T. Woloszyn, 300 Capstan Dr., Anchorage, AK 99516.

R. Jantzen, SOHIO Pet., 9401 Southwest Freeway, Suite 1221, Houston, TX 77074.

Stanley A. Sansone, DEPCO, 1000 Petroleum Bldg., 110 Sixteenth St., Denver, CO 80202.

Marty R. Smithey, DEPCO, 1000 Petroleum Bldg., 110 Sixteenth St., Denver, CO 80202.

Ronald L. Ackley, 800 E. Imhurst Cir., Sacramento, CA 95825.

Evans, Carey and Crozier, 2700 K. St., Bakersfield, CA 93301.

McClelland Engineers, Inc., 2140 Eastman Ave., Ventura, CA 93003.

Thomas Adame Jr., Sun, 1801 Broadway, Suite 1000, Denver, CO 80202.

Mark W. Traut, Cities Service, P.O. Box 939, Bakersfield, CA 93302.

Robert A. Teitsworth, Trio Pet. Inc., 5401 Business Park So., Suite 115, Bakersfield, CA 93309.

Stan Eschner, Trio Pet. Inc., 5401 Business Park So., Suite 115, Bakersfield, CA 93309.

Brian H. Brown, 2415 Rampart St., Oakland, CA 94602.

John A. Packard, Union Oil, 32 Cadbury Rd., Sunbury-on-Thames, Middlesex, TW16 7LU England.

American Pacific International Inc., 23456 Hawthorne Blvd., Suite 300, Torrance, CA 90505.

New Members

Bakersfield, CA

Jaff Auchterlonie, Getty; Bruce Bridenbecker, Cities; Mark R. Faham, Gulf; Michael D. McGuire, Getty; Margaret L. Turner, Cities; Dirk Van Hart, Occidental; Gerald B. Church, SSC; John T. Collins, Shell; Frank Cooper, Gearhart; Roger Cunningham, Gearhart; Elizabeth D. Murphy, Gearhart; Mike McCamley, Getty; Jerry McNaboe, Getty; Kyle Rheubottom, Getty; Douglas Seedorf, Gulf; Jack Tucker, Calif. Well Sample Repository; Jack Gallagher, Occidental; Halina W. Duda, Hershey Oil; Gene Evola, Gulf; Fred W. Vlierboom, Occidental; Geroge Roszkowski, Getty; John D. Thaeler, Occidental; Boyd S. Getz, Chevron; Stanley W. Stearns, Evans, Carey & Crozier; Jim Work, Occidental; Robert S. Williams, Cities Service; Michael E. Novolio, Tenneco.

Ventura/Santa Barbara Area

Juan A. Guerrero, Chevron; Bradford J. Guidry, Reading & Bates; Ioan Marinescu, Exxon; Marilyn G. Merritt, Chevron; A. Daniel Monroy, Chevron; Kent E. Newshan, Union; Stephen J. Pavlak, Union; Chip Corbett, Schlumberger; Ed Guenard, Exlog; Joseph Holliday, Union; David W. Mautz, Union; Jack H. Gregg, Union; Richard LeVeque, Union; Karen Christensen, Conoco; Mark Dockum, Conoco; Carl J. Lothringer, Union; Joseph Moser, Conoco.

Los Angeles Area

Gerson L. DeAlmeida, Texaco; Don K. Sherman; David E. Willis, Union; Joseph A. Curiale, Union.

California, general

John A. Bickley, Aminoil; Ken Daverin; William J. Hunter; Paul Weimer, SOHIO Pet.; Warren Tong; James G. Jensen, Texas Oil and Gas Corp.; Fredrick A.F. Berry; Craig D. Prentice, Exlog; David Akin, Energylog.

AAPG-SEPM ROCKY MOUNTAIN SECTION MEETS

The 1984 AAPG-SEPM Rocky Mountain Section Meeting and Energy Minerals Division National Meeting will be held in Salt Lake City, Utah on August 26-29. The Utah Geological Association will host. A technical program is being organized around the theme "Energy and More in '84." You are invited to submit oral or poster papers to the program. The AAPG-SEPM program will emphasize oil and gas exploration in the Rockies, new exploration frontiers, regional geology, basin analyses, seismic techniques, paleotectonics, carbonates, clastics, and evaporites. The EMD program will cover topics including exploration and development of coal and lignite, geothermal energy, oil shales, tar sands, and uranium.

GRAND CANYON RAFT TOUR PLANNED

The Natural History Foundation of Orange County would like to invite AAPG members to participate on a nine-day river-raft tour through the Grand Canyon, August 18-26, 1984. Dr. Robert Matthews, Professor of Geology, U.C. Davis, and authority on the geology of the Grand Canyon will be leading the expedition.

The cost of \$1,325 includes air fare to Flagstaff, one night in Flagstaff, all transportation, and meals. For a reservation, send \$200 to: Natural History Foundation of Orange County — Grand Canyon Tour, Jane Henderson Travel, 1876 North Tustin, Orange, CA 92667. For information, call Carol Stadum, (714) 536-2514, ext. 263.

SAGE WORDS

It is said the human brain has many advantages over the synthetic computer.

It occupies very much less space.

Is self propelled.

Is economical on fuel and needs little more than the equivalent of a handful of peanuts each day.

And finally . . .

Can be mass produced by relatively unskilled labor.

ASG, Newsletter
July, 1979

Alaska

A.G.S. Journal No. 3, which contains the proceedings of the 1982 Symposium, "Western Alaska Geology and Resource Potential" is now available. The cost is \$5.00 for members, and \$10.00 to non-members. Mail request to: Alaska Geological Society, P.O. Box 10-1288, Anchorage, Alaska, 99510.

Gill Mull of the Alaska Division of Geological and Geophysical Surveys is acting as coordinator of the Alaska field guide for the Cordilleran Section of the GSA publication celebrating the first 100 years of the GSA. This is part of the guides for each of the six GSA sections. These guides will include descriptions of 100 of the best sites within the area that illustrate the most important features in interpretations of regional geology. Everyone is invited to nominate important sites in Alaska and 25 will be chosen. Contact Gill for nomination forms at Alaska Div. of Geol. and Geoph. Surveys, Pouch 7-208, Anchorage, Alaska 99510.

A new map showing both onshore and offshore Alaska sedimentary basins that have oil and gas potential has been released by the Alaska State Geological Survey. The map is at a scale of 1:2,500,000 and has 24 seismic cross sections and 16 structural cross sections. The map costs \$10 and is available through the Division of Geological and Geophysical Surveys.

Coast

Calendar: Tuesday, February 21, 1984, Dr. Miriam Kastner, Scripps, "Origin of Dolomite and Its Spatial and Chronological Distribution — A New Insight"; Tuesday, March 20, 1984, Dr. Stephen Graham, Stanford, "Aspects of the Monterey Formation and Equivalent Rocks"; and Tuesday, April 17, 1984, Dr. Eric Frost, UCSB, "Mid-Tertiary Extensional Deformation in the Southwest U.S. and Its Relationship To the Generation of Hydrocarbon Bearing Basins".

CGS Meetings are held at the American Legion Hall, 83 S. Palm, Ventura, CA. Happy hour at 6:00 P.M., Dinner at 7:00 P.M.

Los Angeles

The annual Fire and Ice Dance was held at the Woodland Hills Country Club on November 20, 1983. The 1983 officers and entire membership of L.A.B.G.S. would like to give special thanks to the following for their contributions to the affair: Core Lab, Burns Geological, Munger Oil, Exploration Logging, Green and Associates, Schlumberger, Gearhart Industries, Strata-Log, The Analysts, and Welx.

Aminoil has announced the transfer of Carl Evans to Aminoil International in Houston. Brian Abbott from Houston will replace Carl as exploration manager.

At the February 14th L.A.B.G.S. meeting, AAPG distinguished lecturer Richard Wyman spoke on "The Future of Natural Gas." Regular L.A.B.G.S. meetings will be held on March 22 and April 26.

Northern California

Calendar: Wednesday, February 15, at Sir Francis Drake Hotel, Powell and Sutter Streets, San Francisco, luncheon, Richard E. Wyman, "The Future of Natural Gas", and Tuesday, March 6, Miriam Kastner, "Origin of Dolomite and its Spatial and Chronological Distribution — A New Insight" (see abstracts this issue).

Note: The Peninsula Geological Society meets the first Thursday of every month from Sept. through June, at Stanford. To get meeting announcements, send a check for \$2.00 to: Peninsula Geological Society, c/o Chris Carlson, USGS, MS904, 345 Middlefield Rd., Menlo Park, CA 94205.

Sacramento

Calendar: February 8, 1984, lunch, — "Sacramento Valley Drilling Statistics" by Roland Bain and February 15, 1984, lunch, — "Sacramento Valley Drilling Costs" (1983 summary) by Roland Bain.

The SPA meets at Neptune's Table every Wednesday for lunch. For information on SPA meetings please write or call: Evers Oil and Gas Information, 4441 Auburn Blvd., Suite D, Sacramento, CA 95841, (916) 972-1030.

The Sacramento Petroleum Association announced their new officers for 1984. They are:

Ernie Burroughs President
Sharon Anderson Vice President
Don Pinnel Secretary/Treasurer

San Joaquin

Calendar: Tuesday, February 14, at American Legion Hall, 6:00 p.m., Richard E. Wyman, "The Future of Natural Gas"; March 13, A. A. Almgren, "Timing of Tertiary Submarine Canyons" (see abstracts this issue).

Corky Isselhardt joined Getty Oil Taft District. Jeff Tulner, a recent graduate of Colorado School of Mines, joined Tenneco as a geological engineer. Tenneco has moved into its new office located at 10000 Ming Ave. The new phone number there is 835-6700. Frank Cressy with Quintana transferred to Denver, and Beth and George Kendall have left for Oxy's office in Bogota, Colombia. SJGS will miss all the active participation of Frank, Beth and George. *We wish them all much success.*

Kay Pitts at Getty is taking over as Secretary of the SJGS. If you know of any news that needs to be put in the *Newsletter*, contact her at 832-4010 ext. 342.

**59TH ANNUAL MEETING
AAPG — SEPM — SEG PACIFIC SECTION
"GETTING IT ALL TOGETHER"**

Sheraton Harbor Island East Hotel
San Diego, CA April 18-21, 1984

JOHN MINCH
General Chairman

HOSTED BY SAN DIEGO ASSOCIATION OF GEOLOGISTS
AND SOUTH COAST GEOLOGICAL SOCIETY

JOINT SESSIONS

Thursday Morning

Keynote: "Communication and Exploration Synergism:" John Silcox, V.P. Chevron Overseas Petroleum.

"Future of Deep-Sea Drilling Project:" Peter Brorella, Saddleback College.

"OCS Sales and Development:" Art Spaulding, Western Oil and Gas Association.

**AAPG
TECHNICAL SESSIONS**

Partial List of Speakers. Times to be arranged.

OPEN SESSION

Thursday Afternoon

The Structural Framework of the Wilmington Oil Field, California: D. D. Clarke and C. Henderson

The Stratigraphy of the Wilmington Oil Field, California: C. Henderson and D. D. Clarke

Clay Analysis of Upper Miocene Deep Water Sandstones, Wilmington Oil Field, Los Angeles County, California: B. H. Beraman

Carbonate Source Characteristics of the Monterey Formation: N. F. Petersen and P. J. Hickey

"Sespe Suite" Clasts — a Stratigraphic Marker in the Continental Borderland: R. R. Belyea and J. A. Minch

The Discovery of a Unique Mineral Suite Associated with Oil and Gas Seeps, Southern California: K. W. Baird and H. R. Lang

Geochemical Provenance of Cretaceous Litters in North Central Oregon: W. C. Sidle

Interpretation of Southern Tofino Basin, Northeast Pacific Margin: G. Hammill

Diagenesis of the Ledge Sandstone Member of the Iviishak Formation (Triassic) from the Ikpikpuk Test Well, National Petroleum Reserve in Alaska: R. K. Marinai

**SYMPOSIUM ON
OFFSHORE GEOLOGY
RELATING TO OCS SALES**

Friday Morning

List of speakers unavailable.

**SYMPOSIUM ON
GORGES OF THE
SACRAMENTO VALLEY
SYMPOSIUM**

Friday Afternoon

Timing of Tertiary Submarine Canyons and Marine Cycles of Deposition in the Southern Sacramento Valley, California: A. A. Almgren

Seismic Recognition of the Tertiary Submarine Canyons, Sacramento Valley: J. Fuchs

The Martinez Submarine Canyon, Southern Sacramento Valley, California: M. W. Pepper

Sacramento Valley's Meganos Submarine Canyon: Geology and Hydrocarbon Accumulations in the Brentwood Area: J. N. Thompson

The Arkley Submarine Valley and its Stratigraphic Relationships: O. Pepper-Kitredge and M. Wilson

**SEG TECHNICAL
SESSIONS
SYMPOSIUM ON SEISMIC**

Thursday Afternoon

Some Reservations on Seismic Inversion: G. Barnes and S. Nguyen

A Comprehensive Method for Evaluating the Design of Airguns and Airgun Arrays: B. Dragoset

Bright Spot Validation Using Comparative P-Wave and S-Wave Seismic Sections: J. D. Robertson and W. C. Pritchett

Modelling Out-Of-Plane Features in Marine Reflection Data Using Seabeam Bathymetry: I. I. Kim and J. A. Orcutt

Dip Move Out By Offset Continuation: J. Ronen

Poststack Estimation of Three-Dimensional Crossline Statics: P. S. Schultz and A. Lau

**SYMPOSIUM ON
MAGNETOTELLURIC**

Friday Afternoon

The Role of the Interpreter in Magnetotelluric Analysis: R. B. McEwen

Combined Use of Magnetotellurics and Reflection Seismic — A Case History: E. Berkman, A. Orange and R. D. Smith

Comparison of Coincident Seismic and Magnetotelluric Profiles Across the Rio Grande Rift: P. S. Mitchell, G. R. Jiracek and R. Redding

Magnetotellurics Exploration of the Col-

ombia Plateau, Washington and Oregon: J. H. Beyer and M. K. Mulrey

The Effect of Rugged Topographic Relief and Lateral Conductive Zones on Magnetotelluric Data Collected at Mount Hood: E. C. Mozley

An Interactive System for Two-Dimensional Magnetotelluric Interpretation: H. J. Swanger, W. L. Rodi and J. B. Minster

**SYMPOSIUM ON
RESERVOIR STUDIES**

Friday Afternoon

Automated Quantitative Kerogen Assessment and Thermal Maturity Analysis: A Pilot Study: D. G. Winkler and K. R. Castleman

Color Seismic Analysis and Imaging — A New Dimension in Reservoir Prediction: G. W. Rice, B. B. Stebens, and C. V. Watson

Shear Velocity Logging in Slow Formation Using the Stoneley Wave: J. L. Stevens, and S. M. Day

Controlled Source Em Resistivity Mapping of Oil-Water Contact: J. M. Souto

Megasource Electromagnetic Sounding Survey in Central Washington: G. V. Keller

Mapping of Steam-Front Advance Using Electromagnetic Resistivity Exploration Techniques: J. M. Souto

**SEPM
TECHNICAL SESSIONS**

**SYMPOSIUM ON DOLOMITES IN THE
MONTEREY FORMATION AND OTHER
ORGANIC-RICH UNITS**

*Presiding: R. E. Garrison,
M. Kastner and D. Zenger*

Thursday P.M.

1:10 – 1:20 *Introductory Remarks*

1:20 – 1:40 *L. D. Kulm, E. Suess, and T. M. Thornburg: Dolomites in Organic-Rich Muds of the Peru Forearc Basins: Analogue to the Monterey Formation*

1:40 – 2:00 *M. Kastner, K. A. Mertz, Jr., D. Hollander, and R. E. Garrison: The Association of Dolostone-Phosphorite-Chert: Causes and Possible Diagenetic Sequences*

2:00 – 2:20 *K. A. Mertz, Jr.: Diagenetic Aspects, Sandholt Member, Miocene Monterey Formation, Santa Lucia Mountains, California: Implications for Depositional and Burial Environments*

2:20 – 2:40 *R. E. Garrison and S. A. Graham: Dolomite Concretions Formed During Early Diagenesis, Monterey Formation (Miocene), California*

2:40 – 3:00 *R. I. Kablanow II and R. C. Surdam: Origin of Dolomites in the Monterey Formation, Pismo and Huasna Basins, California*

- 3:00 – 3:20 BREAK
- 3:20 – 3:40 *N. C. Henderson, G. A. Crawford, J. B. Dunham, and R. H. Osborne: Relationship of Diagenetic Dolomite to Depositional Facies in Diatomaceous Sediments, Upper Sissuoc Formation, Casmalia Hills, Santa Barbara County, California*
- 3:40 – 4:00 *C. M. Isaacs: Disseminated Dolomite in the Monterey Formation, Santa Maria and Santa Barbara Areas, California*
- 4:00 – 4:20 *J. Kushnir and M. Kastner: Two Forms of Dolomite Occurrences in the Monterey Formation, California: Layers and Concretions — A Comparative Mineralogical, Geochemical and Isotopic Study*
- 4:20 – 4:40 *J. S. Compton and R. Siever: Magnesium Mass Balance Calculations for the Monterey Formation, Santa Maria Basin, California*
- 4:40 – 5:00 *S. J. Hornafius: Origin of Remnant Magnetization in Dolomites from the Monterey Formation*
- 5:00 – 5:20 *R. S. Coe, R. L. Pettit, K. A. Mertz, Jr., and D. J. Hollander: Estimate of Maximum Burial Temperature of the Monterey Formation at Arroyo Seco from Paleomagnetism of Dolomite*

SYMPOSIUM ON THE IMPERIAL BASIN — TECTONICS, SEDIMENTATION AND THERMAL ASPECTS

Presiding: C. Rigsby

Thursday P.M.

- 1:15 – 1:20 *Introductory Remarks*
- 1:20 – 1:40 *G. S. Fuis, W. M. Kohler and W. D. Mooney: Crustal Structure and Tectonics of the Imperial Valley Region, California*
- 1:40 – 2:00 *L. M. Gibson, L. L. Malinconico, T. Downs and N. M. Johnson: Structural Implications of Gravity Data from the Vallecito-Fish Creek Basin, Western Imperial Valley, California*
- 2:00 – 2:20 *C. L. Powell: Review of the Marine Neogene Imperial Formation, Southern California*
- 2:20 – 2:40 *H. A. Quinn and T. M. Cronin: Micropaleontology and Depositional Environments of the Imperial and Palm Springs Formations, Imperial Valley, California*
- 2:40 – 3:00 *P. Bell-Countryman: Environments of Deposition, Pliocene Imperial Formation, Southern Coyote Mountains, Imperial County, California*
- 3:00 – 3:20 *V. A. Frizzell: Imperial Basin Fill Looks Dry and Toasted*
- 3:20 – 3:40 *P. V. McLaughlin: Holocene*

Flood Deposits and Liquefaction in the Imperial Valley, California

- 3:40 – 4:00 *F. S. Maramoto and W. A. Elders: Use of Wireline Logs to Identify Zones of Progressive Hydrothermal Metamorphism and Their Correlation to Reservoir Temperatures in the Salton Sea and Westmoreland Geothermal Systems, Imperial Valley, California*

SYMPOSIUM ON TECTONICS AND SEDIMENTATION ALONG THE CALIFORNIA MARGIN

Presiding: J. K. Crouch and S. B. Bachman

Thursday P.M.

- 1:15 – 1:20 *Introductory Remarks*
- 1:20 – 1:40 *T. H. Jordan and J. B. Minster: Block Kinematics in Central California*
- 1:40 – 2:00 *J. R. Curray and D. G. Moore: Geologic and Tectonic History of the Gulf of California*
- 2:00 – 2:20 *J. K. Crouch, S. B. Bachman and J. T. Shay: Post-Late Miocene Compressional Tectonics Along the Central California Margin*
- 2:20 – 2:40 *S. B. Bachman, J. S. Menack and M. B. Underwood: Cenozoic Paleogeography of Coastal Northern California*
- 2:40 – 3:00 *J. C. Clark, E. E. Brabb, H. G. Greene and D. C. Ross: Geology of the Point Reyes Peninsula (Marin County California) with Implications for San Gregorio Fault History*
- 3:00 – 3:20 *C. J. Busby-Spera: The Lower Mesozoic Continental Margin and Marine Intra-Arc Sedimentation at Mineral King, California*
- 3:20 – 3:40 *D. C. Balch, S. H. Bartling and P. L. Abbott: Volcaniclastic Strata of the Upper Jurassic Santiago Peak Volcanics, San Diego, California*
- 3:40 – 4:00 *D. J. Bottjer and M. H. Link: A Synthesis of Late Cretaceous Southern California and Northern Baja California Paleogeography*
- 4:00 – 4:20 *T. H. Nilsen: Tectonics and Sedimentation of the Upper Cretaceous Hornbrook Formation, Oregon and California*
- 4:20 – 4:40 *R. R. Belyea and J. A. Minch: Stratigraphy and Depositional Environments of the Sespe-Vaqueros Formations, Santa Ana Mountains, California*

POSTER SESSION

Presiding: P. Bertucci

Thursday P.M.

- Booth 1 *D. Beaudry and J. F. Klink: Seafloor Channel Reorientation in Response to Late Quaternary Uplift in the Santa Maria Basin*

- Booth 2 *J. E. Corthay: Holocene and Late Pleistocene Mass Movement on the North-Central Slope of Santa Barbara Channel*
- Booth 3 *J. P. Kern: Chronology, Paleoenvironments, and Tectonics of California Pleistocene Shorelines, San Diego to Oceanside*
- Booth 4 *G. S. Lichtman and L. J. Pierson: Quaternary Paleoenvironmental Reconstruction and Potential Archeological Implications, Northern Santa Barbara Channel, California*
- Booth 5 *B. A. Luneau: Trench Slope Deformation in the Cambria Slab, Cambria, California*
- Booth 6 *R. B. Ward: Slope Channel Deposits Within the Upper Siliceous Member of the Monterey Formation West of Gaviota Beach, California*
- Booth 7 *W. J. Winters: Stratigraphy, Petrology, and Regional Significance of Paleogene Nonmarine Clastics at Johnson Creek, Lewis County, Southwest Washington*
- Booth 8 *A. P. Carlos and R. G. Douglas: Paleocology of the Luisian and Mohnian Monterey Formation, Upper Newport Bay, Newport Beach, California*
- Booth 9 & 10 *J. R. Kleist, T. R. Bard, R. C. Crane, D. B. Engstrom, H. B. Morrow, and S. J. Reber: Central Arctic Foothills, Alaska: A Unique Challenge in Frontier Exploration*

SYMPOSIUM ON GEOLOGY OF BAJA CALIFORNIA PENINSULA

Presiding: V. A. Frizzell, Jr. and J. R. Boles

Friday A.M.

- 7:50 – 8:00 *Introductory Remarks*
- 8:00 – 8:20 *G. Gastil: The Prebatholithic Terranes of Peninsular California*
- 8:20 – 8:40 *P. V. Anderson: Prebatholithic Strata of San Felipe: The Recognition of Cordilleran Miogeoclinal Deposits on Northeastern Baja California, Mexico*
- 8:40 – 9:00 *M. J. Campbell and J. R. Crocker: Paleozoic Metasediments of Southeastern Baja California, Mexico*
- 9:00 – 9:20 *M. P. DeLattre: New Permian Miogeoclinal Formation in Baja California, Mexico*
- 9:20 – 9:40 *P. I. Buch: New Upper Permian(?) and Lower Triassic Stratigraphic Units East of El Marmol, Baja California, Mexico*

- 9:40 – 10:00 *J. R. Phillips*: A New Lower Cretaceous Stratigraphic Unit, Northeastern Baja California, Mexico
- 10:00 – 10:20 *D. L. Kimbrough*: Geochronology of Mesozoic Paleooceanic Terranes on Cedros Island and the Vizcaino Peninsula, Baja California, Mexico
- 10:20 – 10:40 *K. D. Berry and P. L. Miller*: Mesozoic Biostratigraphy, Vizcaino Peninsula and Cedros Island, Baja California Sur, Mexico
- 10:40 – 11:00 *P. A. Whalen and E. A. Pessagno Jr.*: Lower Jurassic Radiolaria, San Hipolito Formation, Vizcaino Peninsula, Baja California Sur, Mexico
- 11:00 – 11:20 *J. J. Hickey*: Stratigraphy and Composition of a Jura-Cretaceous Volcanic Apron, Punta Eugenia, Baja California Sur, Mexico
- 11:20 – 11:40 *D. M. Bernal*: Middle Cretaceous Deposition of the Chapunes and Valle Formations, Campo Campito, Northern Vizcaino Peninsula, Baja California Sur, Mexico

SYMPOSIUM ON GEOLOGY OF BAJA CALIFORNIA PENINSULA

(Continued)

Presiding: *V. A. Frizzell, Jr.*
and *J. R. Boles*

Friday P.M.

- 1:20 – 1:40 *T. E. Moore*: Tectonic Significance of Mesozoic Terranes of the Vizcaino Peninsula, Baja California Sur, Mexico
- 1:40 – 2:00 *D. A. Barnes*: Basin Analysis of Volcanic Arc-Derived Mesozoic Sedimentary Rocks, Vizcaino Peninsula, Baja California Sur, Mexico
- 2:00 – 2:20 *M. C. Blake, Jr., A. S. Jayko, V. Chavez, T. E. Moore, J. B. Saleeby, and K. Seel*: Tectonostratigraphic Terranes of Magdalena Island, Baja California Sur
- 2:20 – 2:40 *J. Ledesma-Vazquez*: Identification of the Mechanisms of Sedimentation for a Facies of the Rosario Formation, Upper Cretaceous, Baja California, Mexico
- 2:40 – 3:00 *R. W. Fulwider*: Biostratigraphy of the Tepetate Formation, Baja California Del Sur
- 3:00 – 3:20 *H. McLean, J. A. Barron, and B. P. Hausback*: The San Gregorio Formation of Baja California Sur, Mexico, is Late Oligocene
- 3:20 – 3:40 *D. Z. Piper, C. M. Isaacs, and P. D. Rude*: Major- and Minor-Element Composition of Phosphorites from the San Gregorio Formation, Baja California Sur
- 3:40 – 4:00 *J. J. Aranda-Gomez and J. A. Perez-Venzor*: Reconnaissance Geology of Punta Coyotes, B.C.S., Mexico

- 4:00 – 4:20 *J. C. Ingle*: Neogene Marine Stratigraphy and History of the Gulf of California
- 4:20 – 4:40 *M. C. Boehm*: The San Felipe Marine Sequence: A Singular Group of Middle to Late Neogene Protogulf and Gulf of California Sediments Exposed in Northeastern Baja California Norte, Mexico
- 4:40 – 5:00 *C. McCloy*: Stratigraphy and Depositional History of the San Jose Del Cabo Trough, Baja California Sur
- 5:00 – 5:20 *M. Tellez and F. Suarez*: Paleocology of Late Pleistocene Benthonic Community in the Bahia San Quintin, Baja California, Mexico
- 5:20 – 5:40 *J. Ashby and J. A. Minch*: Late Pleistocene Molluscan Paleoenvironments of the Mulege Embayment, Baja California Sur, Mexico

SYMPOSIUM ON PALEOMAGNETISM OF TERTIARY AND MESOZOIC SEQUENCES IN CALIFORNIA, OREGON AND WASHINGTON — TECTONICS AND STRATIGRAPHIC RESOLUTION

Presiding: *M. Marshall*

Friday A.M.

- 8:30 – 8:40 *Introductory Remarks*
- 8:40 – 9:00 *J. S. Hornafius and C. W. Lagle*: Magnetic Stratigraphy and Diatom Biostratigraphy of the Monterey Formation at Selected Localities in the Western Transverse Ranges, California
- 9:00 – 9:20 *S. Levi, D. L. Schultz, R. S. Yeats, L. T. Stitt, and A. M. Sarna-Wojcicki*: Magnetostratigraphy and Paleomagnetism of the Saugus Formation, Los Angeles County, CA
- 9:20 – 9:40 *R. S. Coe, K. A. Mertz, Jr., and R. L. Pettit*: Paleomagnetic Results from Dolomite Rocks of the Monterey Formation, Arroyo Seco Area, California
- 9:40 – 10:00 *P. Ward, K. L. Verosub and J. Haggart*: A Magnetostratigraphic Marker Horizon in the Upper Cretaceous Great Valley Sequence of California
- 10:00 – 10:20 *V. M. Madrid, R. M. Stuart, K. L. Verosub, and J. A. Barron*: Magnetic Stratigraphy of the Late Neogene Purisima Formation, Santa Cruz County, California
- 10:20 – 10:40 *M. J. Kammerling*: Paleomagnetically Constrained Tectonic Reconstruction of the Southern California Continental Borderland
- 10:40 – 11:00 *K. L. Verosub and P. D. Ward*: On the Interpretation of Tectonic Movements from Paleomagnetic Data: An Example from the Upper Cretaceous Chico Formation of California

- 11:00 – 11:20 *D. E. Champion and D. G. Howell*: Northward Translation of Coastal Batholithic Terranes of California
- 11:20 – 11:40 *W. P. Harbert, D. C. Engebretson, M. O. McWilliams, and M. G. Debiche*: Terrane Modeling of Franciscan Limestone Paleomagnetic Results

Friday P.M.

- 1:20 – 1:40 *L. S. Frei, A. Cox, and M. C. Blake, Jr.*: Paleomagnetic Results from the Coast Range Ophiolite in Northern California and Their Structural Implications
- 1:40 – 2:00 *K. L. Schultz*: Paleomagnetism of Middle Jurassic Plutons of the North-Central Klamath Mountains
- 2:00 – 2:20 *E. A. Mankinen, W. P. Erwin and C. S. Gromme*: Tectonic Rotations Suggested by Paleomagnetic Studies in the Eastern Klamath Terrane, California
- 2:20 – 2:40 *C. G. Schwarz and R. F. Burmester*: Preliminary Paleomagnetic Results from the Methow Valley, North-Central Washington – Tentative Confirmation of Late Cretaceous/Early Tertiary Northward Translation of a Slice of North America
- 2:40 – 3:00 *R. F. Burmester, M. E. Beck, Jr., W. J. Harrison, D. L. Stricker, and L. D. Stauss*: Late to Post-Eocene Tectonics in the North Cascades
- 3:00 – 3:20 *P. L. Heller*: Sedimentary Constraints on Models of Tertiary Tectonic Rotation in the Pacific Northwest
- 3:20 – 3:40 *A. Cox, M. Debiche, R. B. Hart and D. Engebretson*: Evolution of the Pacific Basin: The Movie

SYMPOSIUM ON THE KREYENHAGEN FORMATION AND RELATED ROCKS / OPEN SESSION

Presiding: *J. Blueford*

Friday A.M.

- 7:50 – 8:00 *Introductory Remarks*
- Part 1: The Kreyenhagen Formation and Related Rocks**
- 8:00 – 8:20 *J. Blueford and C. Brunner*: Comparison of the Radiolarian Assemblages of the Kellogg Shale, Sidney Flat and Jameson Shale, Members of the Markeley Formation of Northern California
- 8:20 – 8:40 *P. T. Jefferis*: Benthic Foraminifers from the Siliceous Sidney Flat Shale and Kellogg Shale — An Eocene Oxygen Deficient Environment
- 8:40 – 9:00 *J. Blueford and L. D.*

White*: Paleooceanographic Interpretation of Eocene Siliceous Deposits from West Central California

9:00 - 9:20 *R. W. Milam:* Taxonomy, Biostratigraphy and Paleooceanographic Implications Late Early Eocene and Middle Eocene Planktonic Foraminifera, San Joaquin Valley, California

9:20 - 10:00 *K. A. Kappeler, R. L. Squires, and A. E. Fritsche:* Transgressive Marginal Marine Deposits of the Avenal Sandstone, Reef Ridge, Central California

Part 2: Open Session

10:00 - 10:20 *M. S. Rentschler:* Lower and Middle Miocene Stratigraphy, Valecitos Area, San Benito County, California

10:20 - 10:40 *M. A. Keller:* Temperature Zonation of the Opal-CT Zone of the Monterey Formation and Application to the Ventura Basin, California

10:40 - 11:00 *W. R. Bachman and P. L. Abbott:* The Cuyama Connection: Lower Paleogene Conglomerates in the Salinian Block

11:00 - 11:20 *J. P. Kern:* Anatomy and Ontogeny of Small Scale, Right Slip Wrenching: The Rose Canyon Fault Zone, San Diego, California

11:20 - 11:40 *P. A. Deen, S. L. Bass and R. H. Miller:* Ordovician - Devonian Paleoenvironments, Nopah Range, Southeastern California

11:40 - 12:00 *J. C. Edwards and J. D. Cooper*:* Dolomitization of Lower Ordovician Carbonate Rocks, Southern Great Basin

* First author is the speaker except where noted with asterisk.

**PPG DEADLINE
for APR./MAY ISSUE
APRIL 1**

**PACIFIC SECTION
HELD EXECUTIVE
COMMITTEE MEETING**

The Pacific Section AAPG met in Bakersfield on December 12. Among the items discussed were membership, publications, committees, and the 60th Anniversary of the Pacific Section AAPG. The committees discussed included a nominating committee headed by Ted Off. A slate of candidates will appear in the April/May *Newsletter*. The Cross-Section Committee has had several chairmen appointed. They are: John Curran for Coastal areas; Henry Walden for Cuyama; Hugh Vilamova for Central Valley; Jack Cunningham for Santa Maria; Joe Dunwoody for San Joaquin; Wes Bruer for Oregon and Fred Green for Coalinga. Stan Eschner has agreed to put together updates on oil fields for the *Newsletter*. The first is hoped to be ready for the April/May issue. The Pacific Section AAPG is making a donation to National of \$2,000 for the Tectonic Map Project. The 60th Anniversary occurs in 1985; plans are to have a celebration at the Anchorage 1985 Convention. The next meeting will be February 14 in Los Angeles.

**OTC SCHEDULED
FOR MAY**

The 1984 Offshore Technology Conference will be held May 7-9 in Houston's Astrodome. More than 200 papers will present authoritative information on current projects and research efforts. Topical and round table luncheons are planned. Post conference on May 10-11 continuing education programs from American Society of Civil Engineers, SEG, and SPE are planned. Three-day registration costs \$80 for members of OTC Sponsor Societies and \$120 for non-members. Daily registration is \$40 for members and \$60 for non-members. Copies of the proceedings are available for \$60. Deadline for registration is April 16. For information write: OTC Registration, 6200 North Central Expressway, P.O. Box 64705, Dallas, Texas 75206.

PACIFIC SECTION —
AMERICAN ASSOCIATION
PETROLEUM GEOLOGISTS
OFFICERS 1983 - 1984

President JAMES R. WEDDLE
(805) 395-3029

President Elect STANLEY E. (ED) KARP
(805) 395-4438

Vice President LEON J. EARNEST
(805) 325-9599

Secretary R. TERRENCE BUDDEN
(805) 656-7600

Treasurer CAROLYN WALCH
(805) 928-3811

Past President THEODORE (TED) OFF
(805) 484-4367

Newsletter Staff

Editor JUDY A. RUSSELL
(805) 395-8292

Assistant Editor ELIZABETH KENDALL
(805) 589-4239

Associate Editor NANCY A. NEWMAN
(805) 395-8310

Historical BILL RINTOUL

Environmental TOM WRIGHT

Associate Editors

Alaska ARLEN EHM
(907) 333-8880

Coast LORI CAVETTE
(805) 964-9911

Los Angeles JAMES B. BLANKENSHIP
(714) 536-6521

Northern California CATHY CAVENDISH
(415) 979-3000

Sacramento MIKE YOUNG
(916) 927-5228

San Joaquin ELIZABETH KENDALL
(805) 589-4239

Recommended Reading LUCY E. BIRDSALL
(213) 688-2850

NEWSLETTER of the Pacific Section American Association Petroleum Geologists is published bimonthly by the Pacific Section.

Material for publication, requests for previous copies and communications about advertising costs should be addressed to JUDY A. RUSSELL, 5000 STOCKDALE HWY., BAKERSFIELD, CA 93309.

CHANGE OF ADDRESS, subscription, and membership inquiries should be directed to: MEMBERSHIP SECRETARY, PACIFIC SECTION AAPG, P.O. BOX 1072, BAKERSFIELD, CALIFORNIA 93302.

PUBLICATIONS COMMITTEE: Pacific Section American Association of Petroleum Geologists, 3600 S. Harbor Blvd., Box 198, Oxnard, CA 93030.

**WPC PROPOSES SYSTEM
FOR RESERVES
CLASSIFICATION**

At the 11th World Petroleum Congress in London last year, a study group recommended a universal classification and nomenclature system for petroleum and petroleum reserves. The nomenclature proposed is simple, practical, and readily understandable. The group consisted of representatives from Canada, The Netherlands, U.K., U.S., and Venezuela. Highlights of the recommendations are included in an article in the *Oil and Gas Journal* of November 21, 1983.

NEWSLETTER
Pacific Section A.A.P.G.
P.O. Box 1072
Bakersfield, California 93302

**FIRST
CLASS**

Richard L. Hester
1911 Montecito Dr.
Glendale, CA 91208

DA-AM





PACIFIC PETROLEUM GEOLOGIST NEWSLETTER

of the Pacific Section
American Association of Petroleum Geologists

APRIL/MAY 1984

PRESIDENT'S CORNER . . .

"Be careful about reading health books. You may die of a misprint." — Mark Twain

This is a busy time of year, what with income taxes, property taxes, and the convention in San Diego. Assuming that everyone finds themselves in this predicament, the President's Corner will neither preach nor inform. And it will be mercifully short.

The opening quote has nothing to do with the content of this column except, perhaps, to serve as a reminder that as the political season gets in full swing, don't believe everything you read.

James R. Weddle
President

SEVERANCE TAX PROPOSED

EDITOR'S NOTE: The following letter was sent February 29, 1984. In addition to Sen. Royce, letters were sent to Senators Richardson, Alquist, Ayala, Garamendi, Hart, Lockyer, Torres and Boatright.

Dear Senator Royce:

The Pacific Section of the American Association of Petroleum Geologists strongly urges you to vote against the imposition of a severance tax on California oil (AB 3).

You are probably familiar with the usual industry objections which I believe are persuasive, but we as practicing geologists have a different perspective.

A 6% tax on the value of the gross production is like bringing another royalty owner into your business. Generally a drilling venture or a producing property can live with royalties of 20 to 25%. This tax would, in effect, be giving the State a 6% royalty and would sour the economics of many projects.

No compensation is made in the Bates bill for high cost (to produce) oil. A flowing well or one pumping at a high rate with no problems is far more profitable than a stripper well that requires special attention.

Many thermal recovery projects were started when the price of heavy crude was \$25 per barrel. These capital intensive projects are in an economic pinch now that the oil price is \$20 per barrel. Taking the State on as a partner could doom many of these projects.

An allowance for state severance taxes is made in the computation of the Windfall Profit Tax (WPT). As independent producers in some cases pay no WPT and in all cases pay at a lesser rate than do majors, a state severance tax will be proportionately higher on independents.

The provision of eliminating the first 100 barrels a day of production takes care of the mom and pop producers but still leaves a lot of independents in the net.

Major oil companies can pass through any tax to the consumer through higher product prices. Independents and royalty owners cannot.

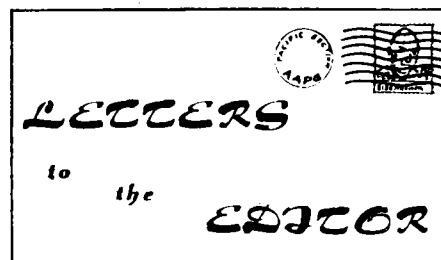
All of these problems put jobs in our industry in jeopardy with the resultant effect of layoffs in related industries.

Senator Royce, this bill is poorly thought out. It will cause unemployment, loss of revenue to county government, greater dependence on foreign oil, and strengthen the position of major oil companies relative to independents.

None of these effects is desirable.

Sincerely,

James R. Weddle
President
AAPG, Pacific Section



March 5, 1984

Sections 7847.5 and 7847.6 of the Business and Professions Code were repealed on January 1, 1984, as a result of board-sponsored legislation. This was publicized, and it was known that applications for registration under these sections could not be accepted after January 1, 1984.

The board was of the opinion that applications which were received prior to December 31, 1983, would be processed, reviewed and considered by the board. It was discussed at several board meetings while the bill to re-

peal the two sections was being considered by the legislature. Our department attorney informed the board on January 25, 1984, that it has no jurisdiction to act on applications after the sections were repealed; additional research of the law substantiated his opinion. He suggested two alternatives for the board to consider. One is to refund the money because the board no longer has jurisdiction, and the other is to obtain emergency legislation to allow it to process the few applications that were filed prior to December 31, 1983. The board has selected the second alternative—to seek legislation.

The board decided to seek legislation at the February 9, 1984, meeting. The majority, who voted for emergency legislation, were of the opinion that it was the only equitable action to take for the 40 to 50 applications still pending because it was an oversight not to have a 'saving clause' for these few applications in the bill that repealed Sections 7847.5 and 7847.6. The proposed emergency legislation would be the same as the 'saving clause' in that it gives the board the authority to consider only those applications on file on December 31, 1983. The two sections are repealed and all applicants, who have filed after January 1, 1984, will be required to take the exam.

AB 3912 was introduced by Assemblyman Don Rogers as emergency legislation. If the legislature approves it, it will become effective immediately when the Governor signs the bill.

The majority of the board members, who are in favor of the legislation, would like to have the support of the associations. The objective of the majority is to take care of unfinished business by considering the applicants who had filed an application in good faith before the sections were repealed. If the legislation isn't enacted, the board can only refund the application fee.

Sincerely,

John E. Wolfe
Executive Secretary,
State Board of Registration
for Geologists and Geophysicists

**PPG DEADLINE
for JUNE/JULY ISSUE
JUNE 1**

PAC. SECTION AAPG TO HOLD ELECTIONS

Ted Off, chairman of the nominating committee, has announced that ballots and biographical sketches of the candidates will be mailed to members in late May. The candidates will be introduced at the San Diego Convention.

In Memory of Richard H. Jahns

Richard H. Jahns, 68, former Dean of Earth Sciences and professor at Stanford, died December 31 in Palo Alto of heart failure. Dr. Jahns was born in Los Angeles, and received his B.S. degree from Cal Tech, his M.S. degree from Northwestern, and his Ph.D. from Cal Tech. He worked for the U.S.G.S., taught at Cal Tech, and was Dean at Penn State before going to Stanford in 1965 as Dean of Earth Sciences. His distinguished career involved teaching, being a Dean, research, public service and consulting. He received the first Ian Campbell Award for public service from AGI, the Public Service Award from the A.A.P.G., and Honorary Membership in the American Association of Engineering Geologists. Under his direction, the Earth Sciences Department at Stanford flourished. He started the department of Applied Earth Sciences and encouraged the growth of Geophysics.

Dick Jahns' research was varied with subjects including the Miocene stratigraphy of the Ventura Basin, quadrangle maps, description of ore deposits, distribution of mica and mining of mica, an important paper on Pleistocene deposits, and of course, pegmatites. His classic paper with Wayne Burnham in 1969, "*Experimental Studies of Pegmatite Genesis: A Model for the Derivation and Crystallization of Granitic Pegmatites*" is still being applied. He became involved in engineering geology, seismology, and geologic hazards with his move to California. He was a co-author of "*Earthquake and Geologic Hazards in California*." He accepted the challenge of bringing geology into the mainstream of human affairs. The geological community will miss Dick Jahns.

1985 CONVENTION PLANS ANNOUNCED

Now that the 1984 Pacific Section AAPG/SEPM/SEG Convention is history, plans are well underway for the 1985 convention to be held in Anchorage. The 1985 convention planning committee gave out information at the San Diego convention during registration and at their booth. Information pertained to programs, call for papers, field trips, entertainment, transportation and various other aspects of the Anchorage convention.

Questionnaires were given to all registrants which contained information for planning purposes. This questionnaire will also be sent to all Pacific Section AAPG members as well as other interested societies and organizations. If you have not received one by June 1, address and inquiry to Arlen Ehm at the address given below.

Numerous field trips are planned which are of geological and petroleum industry interest and a coordinating committee has been established to accommodate those who wish to take other trips on their own. The convention field trips will involve bus, air and train transportation. Entertainment activities being considered include a salmon bake, train trip, cocktail parties, lunches, dinners, and other functions.

Papers are being sought for geological topics in Alaska, Western Canada, Pacific Northwest, as well as California. A balance is being sought so that there will be something of interest for everyone.

Sixteen committees are presently in operation and others will be added as needed. One committee of considerable importance will be the transportation committee whose function will be to obtain reduced air fares for group travel.

In summary, we intend to make this convention as attractive as possible for those outside of Alaska. We will give you every reason possible to include this convention in your 1985 schedule for both yourself and spouse.

Send inquiries to: Arlen Ehm, Gen. Chairman, 1985 Convention Committee, P.O. Box 101288, Anchorage, Alaska 99510.

CALIFORNIA CRUDE OIL PRODUCTION REACHES NEW HIGH

California produced a record 406 million barrels of crude oil in 1983, surpassing the 1982 mark of 401.4 million barrels, according to the Department of Conservation's Oil and Gas Division.

Production rose by 4.6 million barrels from onshore fields and 58,000 barrels from state and federal offshore fields, according to the preliminary estimates based on 10 months of output data, including state and federal offshore totals.

According to the report, the most significant onshore increases occurred in Kern County, with the South Belridge Field (6.4 million barrels), Kern River Field (3.6 million barrels), and Midway Sunset Field (2 million barrels) leading the way.

DOE UPDATES HANDBOOK ON ENHANCED OIL RECOVERY

The Department of Energy has prepared an update of the DOE Environmental Regulation Handbook for Enhanced Oil Recovery. Single copies are available free from the DOE Bartlesville Project Office, P.O. Box 1398, Bartlesville, Oklahoma 74005.

The handbook, DOE Report No. BC-10355-1, was prepared by Spears & Associates of Tulsa, Oklahoma, and is intended to serve as a guidebook for oil producers.

Federal environmental laws and regulations on EOR processes as well as those of 16 major oil-producing states are included in the booklet. Processes include oil recovery by thermal methods (steam flooding and insitu combustion), miscible gas flooding and chemical flooding. Emphasis is given to laws and regulations for the control or prevention of pollution. The handbook covers air pollution control, water pollution control, protection of underground water, and solid waste management. Rules applying to site locations and mode of operations are also covered.

Los Angeles

On March 22, Donald Zenger from Pomona College presented "A Case for Late Diagenetic Dolomitization: The Lost Burro Formation of East Central California". Many thanks for a fine presentation.

On April 26, two student papers were presented. Kristine Kappeler from California State University, Northridge spoke on "Transgressive Marginal-Marine Deposits of the Avenal Sandstone of Reef Ridge, Central California". The second paper, "Hydrothermal Mineralization along the Vincent Thrust at the Big Horn Gold Mine, San Gabriel Mountains", was presented by Walt Hammon, University of California, Los Angeles. Special thanks to Kristine and Walt for sharing their work with the membership.

The May meeting will feature William Kanes speaking on the "Regional Geology of Morocco and Implications to Hydrocarbon Exploration". We hope to see a large turnout from our international groups. In June "A Discussion on the Monterey Formation of the San Joaquin Valley" will be presented by Steve Graham.

Northern California

Calendar: April 17 at Sir Francis Drake Hotel. Luncheon, John Melvin, SOHIO, "Lithofacies, diagenesis, and porosity of the Ivishak Formation, Prudhoe Bay, Alaska". Nominees for NCGS officers will be announced at the April meeting.

Sacramento

Calendar: April, 4, 11, 18, 25. Luncheon Meetings, Neptune's Table. May 18, Golf and Bar-B-Que.

Calendar: April 10 at American Legion Hall, 6:00 p.m., James C. Ingle, Stanford, "Neogene Depositional History of the Gulf of California — Salton Trough, California, and Mexico"; May 8, Eric Frost, UCSD, "CALCRUST: Southern California Endeavor to Understand Crustal Structure and Its Relationship to What Matters — Like Oil, Geothermal and Gold".

Marc Traut is being transferred to China with Occidental. The correct spelling of the new engineer at Tenneco is Jeff Fulmer. (Sorry about that!)

New Officers are:

President Bob Countryman, Gulf
Vice President . . . Geoff Nicholson, Getty
Secretary Kay Pitts, Getty
Treasurer Kristi Stewart, Getty
Directors Gene Tripp, Challenger Minerals,
1983-86
Don Collins, Cities, 1984-87

Oil Companies Pay High Taxes

Large oil companies pay more taxes than large, nonoil firms, says Petroleum Industry Research Foundation Inc., New York.

In a new study, the foundation says 17 major oil companies had an average 26% federal income tax rate during 1980-82, compared with a 16% rate for 200 large, nonoil companies.

When other taxes were included, the 17 companies paid out 13.4¢/dollar of receipts in 1981, up from 5.4¢ in 1974.

OGJ Newsletter, Mar. 26, 1984

SENATE DEMOCRATS PROPOSE TOUGH OCS DRILLING REQUIREMENTS

Vowing to protect the environment, the fishing industry and tourism, California Senate Democrats introduced a package of nine bills in an effort to place tougher state controls on offshore drilling. The action follows a recent federal Supreme Court ruling which restricted the rights of California to restrict OCS drilling.

Among the measures introduced is one by Senator Gary Hart, D-Santa Barbara, which will require slant drilling into new fishery protection zones. The zones will extend to a depth of 30 fathoms, equivalent to 180 feet.

Another measure, a concurrent resolution by Senate President Pro Tem David Roberti, D-Los Angeles, urges the Deukmejian administration to take all possible steps to prevent offshore drilling from creating more onshore smog. Roberti also responded to questions about the legislative package saying that he disagreed with Governor Deukmejian about the Supreme Court decision.

CIPA, Monday Morning Report

After the cancellation of a hearing on AB 3, the Bates severance tax bill, on March 7th, it appears that committee Chairman Daniel Boatwright will be hard-pressed to devote a full hearing day to the bill prior to a legislative deadline of April 30th. The committee has scheduled only four hearings before the informal deadline for bills to be passed by policy committees and referred on to the Senate Finance Committee for subsequent approval. More than 40 bills are already scheduled for consideration by the Revenue and Taxation Committee during the four hearing dates.

According to a staff source, "Senators are now aware that consideration of AB 3 promises to be controversial and time-consuming." If the bill is heard, several amendments will be offered by committee members, who support and those who oppose the bill.

CIPA, Monday Morning Report

Howel Williams Will Not Be Forgotten

The U.S. Board on Geographic Names has approved the name 'Williams Crater' for a small cinder cone just outside the Crater Lake caldera, in honor of Howel Williams (1898-1980), Professor of Geology at the University of California, Berkeley, and author of *The Geology of Crater Lake*. Charles R. Bacon, U.S. Geological Survey geologist chose this feature, which Williams first described, to commemorate him. The cinder cone has been called 'Forgotten Crater' informally.

Geospectrum, V.5, No. 1

WILDERNESS REPORT RELEASED

The U.S. Geological Survey recently published a report that summarizes assessments of the mineral-resource potential of about 45 million acres of wilderness and potential wilderness tracts on lands held by the U.S. Forest Service and the Department of the Interior. The report represents 20 years of study by scientists of the Survey and the U.S. Bureau of Mines. It contains 332 summaries of the mineral and energy-resource potential of about 800 tracts, almost all of them within national forests.

The Wilderness Act of 1964 and subsequent legislation required the responsible agencies to assess the potential of all lands within the National Wilderness Preservation System as well as those under consideration for inclusion in the system. Since the program began, the amount of land to be studied has more than tripled from the original 14.8 million acres.

Studies by the Survey and the Bureau include geologic, geochemical and geophysical surveys and investigations of mines, mineral prospects and mineralized areas. Data avail-

able from private-sector exploration were incorporated in the assessments. The report shows that 220 of the 332 areas studied show promise of the occurrence of one or more kinds of mineral or energy resources. The summaries are organized by states and contain sketch maps of each wilderness study area showing which parts have mineral potential.

The report, *Wilderness mineral potential—assessment of mineral-resource potential in U.S. Forest Service lands studies 1964-84*, was published as U.S.G.S. Professional Paper 1300. It is available from the Distribution Branch, U.S. Geological Survey, 604 South Pickett St., Alexandria, Va., 22304; two volumes, \$32.

Geotimes, April, 1984

Awards and Elections

The Society of Economic Paleontologists & Mineralogists will give these awards at its annual meeting, May 20-23, in San Antonio: The William H. Twenhofel Medal to Kenneth J. Hsu, Institut de Géologie, ETH, Zurich, Switzerland. The Francis P. Shepard Medal to Walter C. Pitman III, Lamont-Doherty Geological Observatory, Columbia University, Palisades, N.Y. The Raymond C. Moore Medal to Helen Tappan Loeblich, University of California, Los Angeles.

The Association for Women Geoscientists has elected these members to the 1983-84 executive committee: president, Laurie Langer, Southern California Gas Co., Los Angeles; vice-president, Elizabeth A.E. Johnson, Union Oil, Los Angeles; secretary, Kathleen M. Johnson, U.S. Geological Survey, Denver; treasurer, Andrea Paroni, University of Idaho, Moscow; editor, Bridget Houston, Cities Service, Oklahoma City; past-president, Vicki Cowart, American Quasar Petroleum Co., Denver. The Association's address is Box 1005, Menlo Park, Calif., 94025.

Employment Opportunities

Geologist — Nevada Experience, MS, 5 years.

Geologist — Sacramento Experience, MS, 5 years.

Geophysicist — Sacramento Experience, BS (MS preferred), 5 years.

These positions are located in Denver.

If interested, send resumé to: Amerada Hess, Suite 2200, 1625 Broadway, Denver, CO 80202. Attn: George Sylvester (303) 573-3544.

**PPG DEADLINE
for JUNE/JULY ISSUE
JUNE 1**

Change of Address

Thora M. Johannson, Occidental Eastern Inc., P.O. Box 511, Guang z Hou, Peoples' Republic of China.

E. W. Rennie, Jr., 674 Country Squire Dr., Suite 103, Ventura, CA 93303.

W. J. Isaacs, Hrubetz Oil Co., 2850 Shadelands Dr., Suite 125, Walnut Creek, CA 94598.

Chuck Edwards, 8041 Willis Ave., Bakersfield, CA 93306.

Jay S. Noller, P.O. Box 7529, Stanford, CA 94305.

James M. Hart, MCO Resources, 10880 Wilshire Blvd., Los Angeles, CA 90024.

Frank Cooper, 1305 Bridgeport, Bakersfield, CA 93308.

Charles Bishop, 1432 Flintwood Ct., Martinez, CA 94553.

New Members

Bakersfield, CA

Steven Bergath, Getty; Kip Hering, Occidental; Tim Kustic, Div. of Oil & Gas; Chuck McCollough, Occidental; Anna Morrow, Getty; Carroll D. Shearer, Cities; Reed J. Bowles, Div. of Oil & Gas; Brian J. Casey, Shell; Philip Goalwin, Getty; Patrick J. Kinnear, Div. of Oil & Gas; Corey Walsh, Moore & Taber; William R. Winkler, Div. of Oil & Gas; Mark F. Mercer, Petro-Lewis Corp.

Northern California

Sarah Hosken Bartling, Hrubetz Oil Co.; John R. Carson, Chevron; Holly K. Horton, Chevron; Margaret Keller, USGS; Patrick J. Kennedy; John B. Miller; J. Robert Munford, Hrubetz Oil Co.; O. A. Poirier; Thomas J. Schull, Chevron; William J. Hunter; Paul V. Anderson, Chevron.

Los Angeles Area

John Coleman, Union; William C. Sul-

koske, Union; Karl R. Blasues, Getty; Eloise K. Frick; Steven M. Pencall; Jon R. Sloan, CSU Northridge; Richard D. Sawyer.

California, General

John E. Bucker, John Bucher Drilling Muds; L. J. Parkinson; John S. Loofbourow, Jr.; Timothy S. Boardman.

Other States

J. Thomas Eggert, Arco Alaska, Inc. (Anchorage); Foy L. Otts, Florida Exploration Co. (Aurora, CO); Michael T. Starita, M. J. Systems (Denver, CO); William Belfield, Arco (Dallas, TX); John M. Armentrout, Mobil (Dallas, TX); Allen B. Scouler, (Soldotna, AK); Curtis Hancock, Samedan Oil Co. (Denver, CO).

ANALYSIS PROVIDED OF THE POTENTIAL EFFECTS OF AB 3

Tax Committee member Alan Byone of Arthur Young and Company has prepared a brief analysis of AB 3 which attempts to answer questions raised by CIPA members since passage by the Assembly. The following points describe the bill in its current form:

- A 6% tax would be applied on the gross value of each barrel of crude oil, condensate and casinghead gasoline severed (extracted) from within the state.
- Offshore oil produced from properties within the State's jurisdiction would be subject to the tax.
- Both royalty owners and working interest owners would be subject to the tax.
- The first 36,500 barrels of production per year per producer would be exempt. A "controlled group" of corporations would be entitled to only one 36,500 bbl exemption per year.
- Oil owned or produced by the State or any of its subdivisions will be exempt from the tax.

PACIFIC SECTION —
AMERICAN ASSOCIATION
PETROLEUM GEOLOGISTS
OFFICERS 1983 - 1984

President JAMES R. WEDDLE
(805) 395-3029

President Elect STANLEY E. (ED) KARP
(805) 395-4438

Vice President LEON J. EARNEST
(805) 325-9599

Secretary R. TERRENCE BUDDEN
(805) 656-7600

Treasurer CAROLYN WALCH
(805) 928-3811

Past President THEODORE (TED) OFF
(805) 484-4367

Newsletter Staff

Editor JUDY A. RUSSELL
(805) 395-8292

Associate Editor NANCY A. NEWMAN
(805) 395-8310

Historical BILL RINTOUL

Environmental TOM WRIGHT

Associate Editors

Alaska ARLEN EHM
(907) 333-8880

Coast LORI CAVETTE
(805) 964-9911

Los Angeles GEORGE BABASHOFF
(213) 689-2335

Northern California CATHY CAVENDISH
(415) 979-3000

Sacramento ERNIE BURROUGHS
(916) 482-4950

San Joaquin KAY PITTS
(805) 832-4010

Recommended Reading LUCY E. BIRDSALL
(213) 688-2850

NEWSLETTER of the Pacific Section - American Association Petroleum Geologists is published bimonthly by the Pacific Section.

Material for publication, requests for previous copies and communications about advertising costs should be addressed to JUDY A. RUSSELL, 5000 STOCKDALE HWY., BAKERSFIELD, CA 93309.

CHANGE OF ADDRESS, subscription, and membership inquiries should be directed to: MEMBERSHIP SECRETARY, PACIFIC SECTION AAPG, P.O. BOX 1072, BAKERSFIELD, CALIFORNIA 93302.

PUBLICATIONS COMMITTEE: Pacific Section American Association of Petroleum Geologists, 3600 S. Harbor Blvd., Box 198, Oxnard, CA 93030.

- The tax would appear to qualify for the severance tax adjustment in computing the Windfall Profit Tax.
- The tax would be deductible in computing U.S. Federal income tax, and California income and franchise taxes.
- Oil properties including crude oil reserves would continue to be subject to property taxes.

It should be noted that the bill will be subject to several amendments if considered by the Senate.

CIPA, Monday Morning Report

NEWSLETTER
Pacific Section A.A.P.G.
P.O. Box 1072
Bakersfield, California 93302

**FIRST
CLASS**

Richard L. Hester
1911 Montecito Dr.
Glendale, CA 91208

DA-AM





PACIFIC PETROLEUM GEOLOGIST NEWSLETTER

of the Pacific Section
American Association of Petroleum Geologists

May, 1984

SPECIAL ELECTION ISSUE

CANDIDATES FOR OFFICE — PACIFIC SECTION AAPG



LUCY E. BIRDSALL

Candidate for President-Elect

Present Position:

Information Specialist, Public Inquiries Office, U.S. Geological Survey

Education:

1950, Univ. of Conn. (Storrs, Conn.), BS

Employment:

1950-53: USGS, Geophysics Branch, Washington
1953-Present: USGS, Public Inquiries Office, Los Angeles

Professional Affiliations:

Geological Society America (member); South Coast Geological Society (member); Assoc. Engineering Geologists (local member); Branner Geological Club (Secretary-Treasurer — 1957-81); President (1982); Registered Geologist — State of California No. 002146

Professional Activities:

Pacific Section: AAPG: 1953, joined.
1956-Present: "Pacific Petroleum Geologist" — Suggested readings (Bibliography)
1979: Member, Convention Committee (Anaheim) — Programs
1981: President Los Angeles Basin Geological Society
1984: AAPG Field Trip Guidebook Committee, member
1979: Honorary Member, Pacific Section



BRUCE M. BARRON

Candidate for President-Elect

Present Position:

Consulting Geologist

Education:

1953, UCLA, BA

Employment:

1953-59: Pac-Owl, Inc., Well site work
1959-77: Oilwell Research Inc., Geologist/eng.
1977-78: Brinadd Co., Completion fluids
1978-84: Strata-Analysts Gr. Geologist
1981-84: Kan-Cal Ent. Inc., Geologist/President

Professional Activities:

AAPG: Active member since 1955, Delegate to National, 1978-81
AAPG, Pacific Section: Gen. Ch. 1979 Conv., L.A. Basin Geol. Soc., Pres. 1980
AIPG, Cal-Section: V.P. 1973, Editor 1978-81, Pres. 1981
SPE: Cont. Ed. Ch., 1980-83
Calif. Reg. Geologist, Calif. Reg. Eng.



EDWARD C. (Ben) CAHILL

Candidate for Vice President

Present Position:

President-Owner, EnergyLog Corp.

Education:

1956, University of the Pacific, BS

Employment:

1956-74: Logging Geologist, Exploration Logging, Sacramento
1975-1977: Supervisor, Western Region USA, Exploration Logging
1978-Present: President-Owner, EnergyLog Corp., Sacramento

Professional Affiliations:

Pacific Section AAPG, AAPG, Pacific Section SEPM, Northern California API, CIPA, Sacramento Petroleum Association

Professional Activities:

1977: Vice President, Sacramento Petroleum Association
1978: President, Sacramento Petroleum Association
1983: General Chairman, Pacific Section AAPG-SEPM-SEG Convention
1980-84: House of Delegates, National AAPG
1984-86: Committee on Membership, National AAPG



ROBERT G. LINDBLOM

Candidate for Vice President

**PPG DEADLINE
for JUNE/JULY ISSUE
JUNE 1**

Present Position:

Senior Development Geologist, Western Region Production, Chevron U.S.A., Inc.

Education:

1948, Duluth Junior College, Assoc. Arts
1950, Univ. of Chicago, BS
1951, Univ. of Minnesota, Graduate Work

Employment:

1951-64: Chevron USA, Inc. (Standard Oil Company of California), Exploration Geologist, located in Taft, Bakersfield and Sacramento
1964-66: Chevron USA, Inc., Geologist, located in La Habra
1966-75: Chevron USA, Inc., Area Development Geologist, located in Inglewood, La Habra and San Francisco
1976-June 1983: Chevron USA, Inc., Senior Development Geologist, located in San Francisco and Concord
June 1983-Present: Chevron USA, Inc., District Development Geologist, located in Concord

Professional Affiliations:

American Association of Petroleum Geologist (AAPG)
Society of Economic Paleontologists and Mineralogists (SEPM)
Society of Petroleum Engineers of the AIME (SEPM)
Society of Professional Well Log Analysts (SPWLA)
American Petroleum Institute, Northern California
Pacific Section — AAPG
Registered Geologist — State of California (No. 2405)
Certification as Petroleum Geologist — AAPG (No. 2095)
American Institute of Professional Geologists — AIPG (No. 5076)

Professional Activities

Vice-President and President, 1960-1961, San Joaquin Geological Society
District Representative, AAPG, 1964-1965
Secretary, Pacific Section, AAPG, 1971
Lecturer, Stanford University, School of Earth Science, Petroleum Engineering Department, Subject — "Oil and Gas Field Development", 1975-Present

Appointed Consulting Association Professor, Stanford University, Petroleum Engineering Department, May, 1982

Publications:

"Pacific Section, AAPG-Membership Profile", AAPG Bulletin, February, 1975
"Timing-Geological and Governmental-in Urban Oil Development, Los Angeles, California", (co-author) Oil and Gas Journal, February 14, 1977
"The Whittier Oil Field (Central Area)", AAPG Guide Book, April, 1975
AAPG National Meeting, 1976, "Timing-Geological and Governmental-in Urban Oil Development, Los Angeles, California" (co-author)
AAPG National Meeting, 1981, "A New Look at Gas Development in the Forbes Formation, Sacramento Valley, California" (co-author)
SEG National Meeting, 1981, "Forbes Paper" as last above. These two papers were also presented at local society meetings of the AAPG, API, and SPE in California.

**PAUL D. HACKER**

Candidate for Secretary

Present Position:

Geologist for Bravo Oil Company located in Bakersfield, California

Education:

1979, CSUN, BA Geography
1982, CLC, BS Geology

Employment:

1974-80: Don Padick Well Logging Service
1980-82: Argo Petroleum Corporation, Ventura, California
1982-Present: Bravo Oil Company, Bakersfield, California

**PHILIP (Phil) L. RYALL**

Candidate for Secretary

Present Position:

President, Stockdale Energy Company, Bakersfield, California

Education:

1960, Fresno State University, BA

Employment:

1960-70: Shell Oil Co., California, Exploration Geologist
1970-72: Buttes Gas & Oil Co., California, Exploration Geologist
1973-80: Consulting Geologist
1980-Present: Stockdale Energy Company, President

Professional Affiliations:

Member: AAPG, SEPM, AIPG, CIPA

Professional Activities:

Past Treasurer AIPG
Field Trip Chairman AAPG (1977)
Field Trip Committee and Leader (served on SEPM)
Past President SJGS (1980)

NEWSLETTER**Pacific Section A.A.P.G.****P.O. Box 1072****Bakersfield, California 93302****FIRST CLASS**

J. D. Traxler
15510 Friends St.
Pacific Palisades, CA 90272

DA-AM
Honorary



PACIFIC PETROLEUM GEOLOGIST NEWSLETTER

of the Pacific Section
American Association of Petroleum Geologists

JUNE/JULY 1984

PRESIDENT'S CORNER...

"The old saw says, 'Let a sleeping dog lie.' Right. Still when there is much at stake, it is better to get a newspaper to do it."

— Mark Twain

Consider this recent headline in the *Los Angeles Times*, "INTERIOR SECRETARY HAS PIPELINE TO OIL." It sounds like a scandal, a conflict of interest, or something nefarious is about to be revealed. The story was that a major oil company leased Secretary Clark's mineral rights on the family ranch near Shandon, California. We know that this is a singularly unnewsworthy event but what would the public think? The headline writer was either a knave or a dolt, but in either case, unworthy.

I will not further dwell on the ills of the media.

This is a last opportunity to use this corner for thanking the executive committee: Leon Earnest, Vice President; Terry Budden, Secretary; Carolyn Walch, Treasurer; Judy Russell, Editor; Hans Schwing, Publications Chairman; Betty Bean, Membership Secretary; and Ed Karp, President-Elect. All of you have been most helpful at your duties and assigned tasks. It was my pleasure to work with you. I hope that Ed Karp will be as fortunate during his term.

I'll close this, my last column, with another Mark Twain quote:

"When you cannot get a compliment in any other way, pay yourself one" — I've been a good President.

JAMES R. WEDDELL
President

PAC SECTION TO CELEBRATE ITS SIXTIETH

Next year marks the sixtieth anniversary of Pacific Section AAPG. This momentous occasion will be remembered in a special publication on the history of the section. We should be proud to know that ours is the oldest AAPG section. The publication will be released at the annual meeting in Anchorage. If you have photographs, historical documents or any memorabilia of interest please contact Fred Green, 1224 Coast Village Circle, Santa Barbara, CA 93108.

PAC SECTION AAPG ELECTS OFFICERS

The newly elected officers for 1983-84 are:

President-Elect Lucy Birdsall, USGS
Vice President Robert Lindbloom
Chevron
Secretary Paul Hacker, Bravo Oil

They join Ed Karp, Bakersfield College, who will be the new President and Carolyn Walsh, Husky (Marathon), who serves a two-year term as Treasurer.

PAC. SECTION AAPG MEMBERSHIP REPORT, MARCH 30, 1984

NORTHERN CALIFORNIA GEOLOGICAL SOCIETY

GA-SF (Active) 162
GS-SF (Subscriber) 22
Honorary 5
189

SACRAMENTO PETROLEUM ASSOCIATION

GA-SC (Active) 44
GS-SC (Subscriber) 25
69

SAN JOAQUIN GEOLOGICAL SOCIETY

FA (Active) 215
FS (Subscriber) 142
Honorary 4
361

COAST GEOLOGICAL SOCIETY

EA (Active) 140
ES (Subscriber) 66
Honorary 2
208

LOS ANGELES BASIN GEOLOGICAL SOCIETY

DA (Active) 286
DS (Subscriber) 79
Honorary 10
375

ALASKA GEOLOGICAL SOCIETY

BA-AK (Active) 28
BS-AK (Subscriber) 1
29

OTHER

BA-US (active—all other States) 159
BS-US (subscriber—all other States) 24
BA-NW (active-Northwest) 23
BS-NW (subscriber-Northwest) 1
BA-OS (active-overseas) 7
BS-OS (subscriber-overseas) 2
216

FINAL 1983-1984 PACIFIC SECTION AAPG MEMBERSHIP TOTAL 1447

OIL SCOUTS CONVENTION

The International Oil Scout Association will hold their annual meeting July 11-13, 1984, at the Holiday Inn in Ventura, California.

The speakers include:

Carol Hallett, Western Regional Assistant to the Sec. of the Interior.

W. E. (Bill) Crain, General Manager Exploration, Chevron U.S.A.

Caroline Isaacs, U.S.G.S., Menlo Park

Jerry Loring, California Division Manager, Schlumberger-Johnston-Macco

Red Adair—Oil Firefighter

Luncheon tickets are available for \$15. For reservations call:

Les Herndon (805) 642-6363

Betty Bean (805) 324-1688.

FUTURE EVENTS

July 11-13, 1984 — Oil Scouts Annual Meeting, Holiday Inn, Ventura, California.

August 10-13, 1984 — SEPM Convention, San Jose.

September 7, 1984 — API Golf Tournament.

November 13-15, 1984 — Pacific Coast Oil Show & Conference, Kern County Fairgrounds, Bakersfield.

PPG DEADLINE for AUGUST/SEPT. ISSUE AUGUST 1



ANCHORAGE, ALASKA
MAY 22-24, 1985

CALL FOR PAPERS
"ALASKAN AND WEST COAST
GEOLOGY AND ENERGY AND
MINERAL RESOURCES"

ALASKA GEOLOGICAL SOCIETY
and
60th Annual Meeting
AAPG—SEPM—SEG

We are now requesting papers for this conference. If you are willing to present a paper, please return the attached form to us by September 15, 1984. Note that we are not requesting an abstract at this time; rather we would appreciate a short description of the contents of your proposed paper in order that we can plan the conference and set up the appropriate number and topics of sessions. You will be contacted later for an abstract; these will be due by December 15, 1984.

The overall strategy of the conference is to hold a single general session each morning of the three days of the conference. These sessions will consist of a series of 30-minute papers. These papers should be wide ranging rather than restricted to a narrow topic, and should appeal to the varied interests of the participants in the conference. Tentatively, we have settled on the following topics for the themes of the morning general sessions:

- * Structure and tectonics of the West Coast
- * North Slope Symposium
- * Energy Resources of the West Coast

The afternoons of the conference will be devoted to concurrent sessions of 20-minute papers. We would particularly like to encourage papers on the following topics:

- * Petroleum potential and exploration of the Outer Continental Shelf
- * Economic geology and mineral resources

- * Alaska oil and gas fields
- * Coal resources of the Pacific rim
- * Accretionary terranes of the West Coast and Alaska
- * Frontiers of exploration geophysics
- * Geohazards
- * Cretaceous-Tertiary biostratigraphy
- * Recent sedimentology

We would hope that almost every paper on the geology, geophysics, oil and gas, and mineral resources of the West Coast can be integrated into one or another of the sessions and we are open to suggestions for additional topics for the afternoon sessions.

There will also be facilities for poster sessions and we encourage presentations there.

We would greatly appreciate your earliest response. The success of this conference will largely depend on the quality and content of the papers that are presented.

PAPER PROPOSED
ALASKAN AND WEST COAST
GEOLOGY AND ENERGY AND
MINERAL RESOURCES
May 22-24, 1985
Anchorage, Alaska

Author(s): _____

Title: _____

Short description of paper: _____

Check one:

- * Thirty-minute paper for General Session:
- * Twenty-minute paper for Afternoon Session:
- * Poster Session:

Comments on topics proposed for afternoon sessions or suggestions on additional sessions: _____

Prepared by: _____

Address: _____

Phone: _____

Please return to: Program Committee/
'85 Conference
Alaska Geological Society
P.O. Box 101288
Anchorage, Alaska, 99510

Alaska

Summer field work is taking its usual toll of the office staffs in Anchorage again this year as numerous field parties are in operation. It appears that 1984 may be one of the busiest in terms of man-months spent in the field in Alaska.

Alaska Geological Society officers for 1984-1985 as follows:

- President* Bruce Clardy, SOHIO
- President-Elect* Cass Arieve, State of Alaska
- Vice-President* George Stadnick, Union
- Treasurer* Robert Crandall, Marathon
- Secretary* Richard Nelson, ARCO
- Directors* Michael Churkin, ARCO
James Dyess, Marathon
William Pyle, Nortec
Gil Mull, State of Alaska
Katherine Reed, U.S.G.S.

Marathon appears to be reducing its staff in their Anchorage office by transferring personnel to the Lower 48. Some geologists have been offered the opportunity to transfer to Santa Maria to be assigned to the former Husky office. Other assignments being rumored are Casper, Denver, and, possibly, Houston. These rumors are not being greeted with tremendous enthusiasm by certain of the Marathon old-timers, however. It must be remembered that many of these individuals came to Alaska with Vitus Bering and the remainder came with Captain Cook.

John J. Amorusa, 1983-84 AAPG President, and Mrs. Amorusa traveled to Alaska in June where he spoke at a special luncheon meeting of the Alaska Geological Society. Mr. Amoruso made the most of this, his first trip to Alaska, by also touring the facilities at Prudhoe Bay.

Coast

Two scholarships were awarded to: Bela Rivers, UCSB and William Kern, Santa Barbara City College. The Bailey Memorial Brunton Award was given to Dean Dougherty at Cuesta College. A gift of \$200 was made to the Core Repository and a contribution of \$200 - \$400 will be made to the Dibblee Foundation. Coast Geological Society T-shirts are now available for \$9 each. Contact Lynn Gray at Union. The Coast group wants to encourage the AAPG to hold their 1987 annual meeting in Ventura. The Annual Mexican Night was held June 19. Wayne Bachman, Union Oil, spoke on "Cuyama Connection." The only transfer known about is Lynn Gray who is going to Anchorage in August.

Los Angeles

Dr. William Kanes from the University of South Carolina was unable to speak on the geology of Morocco due to a minor traffic accident on May 24th. Dr. Kanes was released from the hospital the same day and reportedly suffered only minor injuries. L.A.B.G.S. will attempt to get Dr. Kanes back in the near future.

The annual Barbeque and Field Trip was held on June 1, 1984. Copies of the guidebook may be obtained from Don Hallinger at (213) 689-2975. Entitled *Impending Major Earthquake? San Andreas Fault - Cajon Pass - Wrightwood - Palmdale*, the guidebook includes the latest updates of geology, fault movements and hazard predictions from principal scientists working in the area. The memberships would like to thank the following companies for their donations to the Barbeque: Burns Geological, Core Lab, Exploration Logging, Hughes Drilling, and Mungers. A special thanks goes to Welex for providing the beer.

On June 28th Dr. Steven Graham spoke on the "Aspects of the Monterey Formation, San Joaquin Valley."

Northern California

Calendar: June 20, at Sir Francis Drake Hotel, Luncheon. Bill Gealey, Chevron Overseas: "Plate Tectonic Evolution of the Western Pacific - Indian Ocean Region."

Elections: Held in May with these results.

<i>President</i> Cathy Cavendish, Sohio Petroleum Co.
<i>President-Elect</i>	... Tor Nilsen, U.S.G.S.
<i>Program Director</i> Debbie Hagan, Chevron, U.S.A.
<i>Vice President</i> Pat Nicholson, Oakland Museum
<i>Secretary</i> Harvey Deutsch, Natural Gas Corp.
<i>Treasurer</i> Jeff Eppink, Chevron Overseas Production
<i>Counselors</i>	Paul Schnurr, Hrubertz Oil Pete Miller, Chevron, U.S.A.

San Joaquin

Calendar:

June 12 at American Legion Hall, Sam Sarem, SPE distinguished lecturer, "Does in-field drilling increase ultimate recovery of oil?"

September 14 at Kern River, Annual Barbeque and Golf/Tennis Tournament.

The June 12 meeting was the last held before the 3-month summer recess. It is tradi-

tionally a joint meeting with the SPE. This year we had tough competition with the final game of the NBA being held; even so there were 185 brave souls attending the meeting.

Personnel changes include: Gene Murray returning to Oxy Bakersfield from Pakistan. He switches over to the Latin America group. Also joining the Oxy Bakersfield group are Carlos Salinas transferring from Santa Cruz, Bolivia and Larry Smith up from Buenos Aires, Argentina.

Alan Chatfield, Senior Geologist, Challenger Minerals Inc., has been transferred from Houston to the Pacific Coast District office in Bakersfield. He joins Steve Hamm, Senior Geophysicist, formerly with Quintana and Texaco; Rob Sterling, Geologist; and Gene Tripp, District Exploration Manager.

Enar Pederson left Getty Oil to start his own company in Houston.

Change of Address

Milton Cooper, The Analysts, Inc., 211 Clifton Guilbeaux Rd., Scott, LA 70583.

Dan Scopen, P.O. Box 2218, Blue Jay, CA 92317.

Patricia Young, 2443 Hasti Acres Dr., Bakersfield, CA 93309.

Don Collins, Cities Service Company, P.O. Box 939, Bakersfield, CA 93302.

J. B. Anderson, P.O. Box 5386, Montecito, CA 93108.

J. Paul Roston, 108 Morada Ln., Santa Barbara, CA 93015.

Stanley Darnell, Geomap/Peppard & Assoc., 1100 Geomap Ln., Plano, TX 75074.

William G. Kardos, Marline Oil Corp., 6715 Gentle Bend Dr., Houston, TX 77069.

J. R. Boshard, 119 Manzanillo Ct., Solana Beach, CA 92075.

New Members

Bakersfield, CA and surrounding area

Robert H. Sterling, Challenger Minerals Inc.; Malcolm E. Allan, Occidental; Beverly J. Foster; Mark O. Morrow; Clifford Earl Parli, Dept. of Conservation - DOG; Corey Walsh, Moore & Taber.

Los Angeles, Ventura, Southern California

Petter J. Fischer; Edward C. Powers, Consultant; B. M. Abbott, Aminoil; Nancy B. Aston, Texaco; Russell C. Bin gley, City of Los Angeles; James L. Jones, Core Lab, Inc.; Mike Kratovil, State of California - DOG; H. Michael Mishler.

Northern California

John E. Bucher, John E. Burcher Drilling Muds; Paul V. Anderson, Chevron, USA, Inc.

Other States

Foy L. Otts, Florida Expl. Co., Aurora, CO; Bernie Leas, Exploration Logging, Anchorage, AK; David L. Bond, CONOCO, Inc., Midland, TX.

A Letter From Assemblyman Don Rogers

As you know, earlier in May AB 3, proposed legislation to enact a six percent oil severance tax in California, was scheduled for a hearing before the Senate Revenue and Taxation Committee. However, the bill's author, Tom Bates, D-Berkeley, pulled this measure off calendar at the last minute. His action indicates he still does not have the votes in committee necessary to pass the bill out.

I believe Mr. Bates probably will not ask for another hearing date until after the June election.

Through the united efforts of alert individuals, particularly members of the oil industry, the Senate Revenue and Taxation Committee, the news media, and the public in general are beginning to receive facts and figures on the other side of the story, and are becoming aware of the many negative consequences which an oil severance tax would have on our state.

Please continue to publicize the facts about the oil industry and, in addition, do all that you can to encourage other individuals and organizations to inform the Legislature and the news media of their opposition to this onerous proposal.

Very truly yours,
s/ Don Rogers

New Petroleum Club Formed

An open house on Saturday afternoon, April 28, 1984, marked the starting of the Northern California Petroleum Club.

The club is located at 286 W. Main Street, Woodland, Calif.

Joe Hooker is the club's first president, Al McGinnis—vice president, Kelly Cogbill—Secretary-Treasurer.

The board of directors consists of John Bucher, Doy Fenton, Mark Leland, Ray Stein, Don Tinsley, and Mark Young.

For information on joining the club, call Jan Cearley at (916) 661-0114.

Awards and Elections NATIONAL AAPG

Ted L. Bear, Independent, Fillmore, CA, President.

William L. Fisher, Texas Bureau of Economic Geology, President-Elect.

Gerald M. Friedman, Prof. Emeritus, Rennselaer Polytechnic Institute, Vice-President.

John R. Kerns, Consultant, Casper, WY, Treasurer.

NATIONAL SEPM

The following listed members will serve on the SEPM Council from May 23, 1984 until March 26, 1985:

M. Dane Picard, President.

Orrin H. Pilkey, President-Elect.

Donald H. Zenger, Vice-President.

John M. Armentrout, Secretary-Treasurer.

Richard J. Moiola, Sedimentology Councilor.

Esther R. Magathan, Paleontology Councilor.

William A. Berggren and Charles W. Pirat, Co-Editors, *Journal of Paleontology*.

Norman D. Smith, Editor, *Journal of Sedimentary Petrology*.

Raymond L. Ethington, Editor, Special Publications.

CIPA ELECTS OFFICERS

New officers for 1984-85 of the California Independent Producers Association are:

President Lee C. McFarland,
McFarland Energy, Inc., Santa Fe Springs

Secretary Robert E. Brain,
Cooper & Brain, Wilmington

Treasurer Edward N. Gladish,
Champlin Petroleum, Long Beach

Executive Vice President
Stephen E. Berg-Hansen,
CIPA

Division Vice Presidents

Coastal Galen N. Shirley,
Santa Fe Energy, Santa Fe Springs

Northern California . Ronald D. Leineke,
Venada National, Sacramento

San Joaquin Valley . . Richard Bennett,
Petro-Lewis, Bakersfield

Los Angeles . . . Spencer C. Sheldon,
Aminoil, USA, Huntington Beach

**In Memory of
Irving T. Schwade, 1911-1984**

Irv Schwade passed away March 30 from a heart problem which he had endured for many years. Irv was born in Brooklyn, N.Y., March 11, 1911. He received his B.S. and M.S. from Northwestern, and his early professional career included employment with the Illinois Geological Survey and as a Mining Geologist in the Philippines and in Peru. He joined Richfield Oil Corp. in 1943 — was in Midland, 43-48; Ventura, 48-50; Bakersfield, 50-54; and Los Angeles, 54-67. He was a part of that successful oil-finding team at Richfield during those years. Upon the merger with Atlantic Refining he was in New York with ARCO until early 69, at which time he joined Texfel Petroleum Corp. returning to Los Angeles. With Texfel, as

Vice Pres., Irv perhaps had the ideal assignment in exploration — that of seeking petroleum, mineral, and geothermal prospects any place in the world where he thought a venture would be economically successful. He visited at least 25 countries in the last 15 years evaluating prospects and the terms of acquisition. In 1976, however, due to Texfel's increased activity in Texas, he moved to Abilene. There, he was successful in increasing the company's daily production and adding substantially to its reserves. Irv's publications include papers on the Cuyama Valley oil fields; Salinas-Cuyama basin; Colorado and Illinois stratigraphy; salt-dolomite intergrowths, Texas; and a prospect evaluation method. Irv was AAPG National Nominee for Secy-Treas. 62-63; Business Comm., 58-59; Membership Advisory Comm., 59; and Membership Qualifications Comm. Chairman, 60; and Pacific Section President. He had been informed of his Nomination for Pacific Section Honorary Membership to be given at the April Meeting in San Diego. The award was given posthumously. Irv continued working until the last, but he did have plans to retire to the California coast. A devoted family man, Irv is greatly missed by wife, Jessie, two sons, and grandchildren. His many friends will miss Irv's keen mind and out-going, friendly nature. He made a distinct contribution to the oil-finding profession.

STATE BOARD ANNOUNCES RENEWAL

Biennial license notices for the 1984-86 renewal period will be sent to all registered geologists, registered geophysicists, and certified engineering geologists around May 15, 1984. The renewal fee for registered geologists and registered geophysicists is \$80, and the renewal fee for certified engineering geologists is \$10. If you have not received your renewal notice by June 1, 1984, please contact the board office at (916) 445-1920 or 1021 O Street, Room A-190, Sacramento, CA 95814.

A person who has a delinquent license and who continues practicing geology or geophysics is in violation of the law. It is a misdemeanor offense to practice or offer to practice geology or geophysics without being registered with the board.

In addition, courts in some instances have ruled that clients are not required to pay fees to consultants who are not licensed when a license is required.

The last day for renewing without a penalty is July 30, 1984.

NEW DOE STUDY FOCUSES ON CALIFORNIA HEAVY CRUDE

In a study produced for the Department of Energy, the Rand Corporation reports that there are an estimated 26 billion barrels of marketable, heavy crude oil reserves in the

continental U.S., with 85% of it located in California — especially, the San Joaquin Valley and Los Angeles Basin. Alaskan North Slope heavy oil is not considered in the estimate.

The study contends that heavy oil should be an increasingly important component of domestic oil production during the next 20 years. It says heavy oil production could range between 800,000 and 1.3 million barrels a day by the 1990's, compared with 654,000 barrels per day in 1981. Altogether, there are about 45 to 46 billion barrels of heavy oil in the lower 48 states, not all expected to be recoverable at competitive prices.

Because of the dwindling supply of high gravity crudes, heavy oil production primarily by steam injection will become an increasingly attractive option. According to the study, at current emission control levels, and assuming that reliable downhole steam generators will be developed, nearly all of the incremental steam drive recovery potential can be produced at less than current heavy oil prices — between \$20 and \$28 a barrel. However, stricter emission control requirements for surface steam generators, if imposed by the government, could cause costs to rise to the point at which production becomes marginal.

The 143-page report, R-2946-DOE, *The Heavy Oil Resources of the United States*, by Richard Nehring, Ronald Hess and Murray Kamionski, ISBN 0-8330-0522-7, may be ordered through the Rand Corporation, Publications Department, 1700 Main Street, P.O. Box 2138, Santa Monica, CA 90406-2138. The cost is \$10 per copy.

CIPA Monday Morning Report

OFFSHORE LEASING BATTLE CONTINUES

California House Democrats are continuing efforts to ban oil drilling in key offshore California lease tracts.

Congressman Leon E. Panetta (D-Monterey), Congresswoman Barbara Boxer (D-San Francisco) and Congressman Mel Levine (D-Santa Monica) have co-sponsored a bill to require the federal government's offshore oil and gas leasing plans to comply with federally approved State coastal protection plans — whether the federal plans are for areas inside or outside the three-mile limit. The legislation would reverse a recent U.S. Supreme Court decision by amending the Coastal Zone Management Act.

Congressman Panetta is pushing for action on the measure in the House Merchant Marine Committee. Similar legislation has been introduced in the Senate.

In addition to the change in the coastal protection plan bill, Panetta is pushing for an additional one-year offshore leasing moratorium before the House Appropriations Subcommittee on the Interior. The current ban runs out on September 30.

CIPA, Monday Morning Report

SEPM MIDYEAR MEETING OFFERS OUTSTANDING TECHNICAL PROGRAM

The SEPM Annual Midyear Meeting, August 10-13, 1984 in San Jose offers a technical program that focuses on continental margin clastic sediments, peri-platform carbonates, paleontologic and stratigraphic innovations, and geochemical fingerprints. The meeting begins with Keynote Papers by Roger Walker ("Shelf, Slope, and Basin Floor—Episodic or Continuous Processes Below Fair Weather Base"), Wolfgang Schlager ("The Deep-Water Halo of Carbonate Platforms"), Joseph E. Hazel ("Integration of Biostratigraphic and Magnetopolarity Events: A Scale and Solution Model for Stratigraphy"), and Miriam Kastner ("Sediments and Their Diagenesis: A Short Review of New Developments"). These are followed by 2½ days of 5 concurrent sessions on the topics of clastic sediments, carbonates, mineralogy and diagenesis and paleontology and stratigraphy. Of particular interest to West Coast geologists is a session on "Monterey Petroleum Geology". Also featured are full-day poster sessions on "Marine Processes", "Paleontology and Stratigraphy", "Non-marine and Coastal Processes", and "Geochemistry and Diagenesis".

Field trips include examination of the Monterey Formation both in the Monterey and Margarita Arroyo Seco areas and in the Pismo and Huasna Basins, latest Cretaceous and early Tertiary deposits in the northern Diablo Range, sedimentary serpentinites in the Coast Ranges, the Santa Margarita sandstone in the Santa Cruz Mountains, Pleistocene shoreline deposits of the Merced formation, tectonostratigraphic terranes of the San Francisco Bay Region, and submarine fan and canyon lithofacies of the Salinian Block.

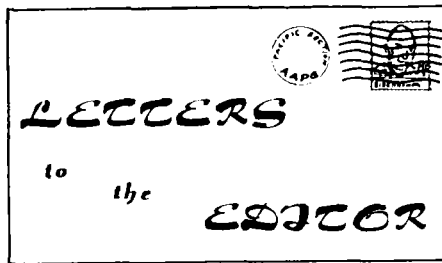
Three short courses will be held prior to the meeting. "The Petroleum Geology of Clastic Depositional Systems" will focus on unconventional reservoirs and stratigraphic and diagenetic traps. "Modern and Ancient Deep-Sea Fan Sedimentation" will provide a comprehensive and up-to-date review of deep-sea fan sand and sandstone reservoirs. "Ichnology: the Use of Trace Fossils in Sedimentology and Stratigraphy" deals with models of bioturbation and bioerosion, paleoenvironmental interpretations, biostratigraphy of trace fossils, sedimentologic implications of biogenic textures and fabrics, and influence of bioturbation on early diagenetic processes.

A full schedule of extracurricular and guest activities complements the technical side of the meeting. Excellent housing is available at moderate cost in the hotels adjacent to the San Jose Convention Center and at very reasonable rates in dormitories on the nearby campus of San Jose State University.

If you have not received your registration kit, order one now from:

SEPM
P.O. Box 4756
Tulsa, OK 74159

Pre-registration closes July 10, 1984. On-site registration will be possible at the San Jose Convention Center.



DOG POLICY PROMPTS LETTERS

Editor's Note: Several of our members have made written and verbal comments concerning the Division of Oil and Gas policy on retaining and copying well records. This prompted letters to the DOG. The letter from Jim Weddle and the response of Marty Mefferd follow. If you wish to make comments, write to the Pac. Section AAPG or the DOG.

Mr. Marion G. Mefferd
State Oil & Gas Supervisor
1416 9th Street
Sacramento, CA 95814

Dear Marty:

Many members have informed me that the Division policy on retaining well records is resulting in much information being purged from the files, particularly, logs. It is also reported that the various districts have differing policies.

Our concern as practicing geologists is that much valuable information could be lost forever. This is not in the best interest of the science, the industry, or the Division.

Would you please enunciate your policy and give the rationale behind it? Your reply, if you wish, could be printed in the newsletter.

I am, of course, cognizant of the demands on your job and the unseen forces that dictate policy. If you need assistance in lobbying for programs, perhaps the Pacific Section could be of service.

Sincerely,
James R. Weddle
President

Mr. James R. Weddle
President
Pacific Section
American Association of
Petroleum Geologists
P.O. Box 1072
Bakersfield, California 93302

Dear Jim:

I have received your recent letter concerning the policy of the Division of Oil and Gas on retention of well records, particularly logs.

It is the Division's policy to retain in hardcopy in the district offices at least the most

commonly used well logs, generally standard induction electric and gamma ray-neutron logs. All other logs are available in our microfilm files, and the hardcopies are stored in boxes on the office premises or in off-site storage.

The primary purpose of this policy is to clear our limited office workspace of unused or rarely used hardcopy documents. However, districts that have adequate space may elect to retain other types of hardcopy logs in their files.

Thank you for your offer to assist the Division in promoting its programs. If you need more information on our programs and policies, feel free to contact me.

Sincerely,
M. G. Mefferd
State Oil and Gas Supervisor

YOUR TAX DOLLARS AT WORK

The following article is shared with CIPA members courtesy of the monthly magazine of the Pennsylvania Oil and Gas Association, *The Practical Operator*.

"Why is it that environmental organizations always have endless sources of money when they enter into their battles to prevent oil and gas development on government lands?"

Representative William Dannemeyer (R-California) has recently uncovered some startling information that the oil and gas industry may find hard to swallow. According to Dannemeyer, our tax dollars have maintained their cash flow. He found that a number of environmental groups received "grants" from federal agencies amounting to a whopping \$3.5 million during the Carter Administration. These handouts have continued throughout the Reagan Administration totaling more than \$1.7 million.

Although the law prevents these monies from being used for lobbying or litigation, environmentalists dodge such roadblocks by saying the money is used to "increase public participation."

The extent of this giveaway program would stagger any taxpayer's mind. Swallow this — the Sierra Club received \$809,854; the National Wildlife Federation — \$1,006,685; the Audubon Society — \$221,483; the Natural Resources Council — \$1,339,983; Friends of the Earth — \$52,279; Environmental Defense Fund — \$135,883; Citizens Labor Energy Coalition — \$10,000; Center for Renewable Resources — \$1,573,663; and, Energy Action Foundation — \$279,372."

CIPA, Monday Morning Report

**PPG DEADLINE
for AUGUST/SEPT. ISSUE
AUGUST 1**

New Publications Available

The new 1984 publications are:

	UNIT COST	NO. COPY	TOTAL COST
SV-1 Paleogene Submarine Canyons of the Sacramento Valley, Calif.	\$18.00		
1 - 1 Selected Papers of the Pacific Section AAPG 1984 Annual Meeting, Sacramento, Calif.	\$12.00		
GB54 Miocene and Cretaceous Depositional Environments, Northwest Baja California, Mexico	\$10.00		
MP35 Selected Papers Presented to the San Joaquin Geol. Soc., Vol. 6	\$ 7.00		
Subtotal			

All orders must be pre-paid and must include \$1.50 postage and handling. Make checks payable to Publications Pacific Section AAPG.

+ \$1.50

TOTAL — Prepaid \$ _____

Send orders to:

Publications Committee
Pacific Section AAPG
Suite 198
3600 South Harbor Blvd.
Oxnard, CA 93030

Make checks payable to: **Publications Pacific Section AAPG**

Ship order to:

For complete publication list see Dec. 1983/Jan. 1984 PPG *Newsletter* or write Publications Committee.

PACIFIC SECTION —
AMERICAN ASSOCIATION
PETROLEUM GEOLOGISTS
OFFICERS 1983 - 1984

President JAMES R. WEDDLE
(805) 395-3029

President Elect STANLEY E. (ED) KARP
(805) 395-4438

Vice President LEON J. EARNEST
(805) 325-9599

Secretary R. TERRENCE BUDDEN
(805) 656-7600

Treasurer CAROLYN WALCH
(805) 928-3811

Past President THEODORE (TED) OFF
(805) 484-4367

Newsletter Staff

Editor JUDY A. RUSSELL
(805) 395-8292

Associate Editor NANCY A. NEWMAN
(805) 395-8310

Historical BILL RINTOUL

Environmental TOM WRIGHT

Associate Editors

Alaska ARLEN EHM
(907) 333-8880

Coast LORI CAVETTE
(805) 964-9911

Los Angeles GEORGE BABASHOFF
(213) 689-2335

Northern California CATHY CAVENDISH
(415) 979-3000

Sacramento ERNIE BURROUGHS
(916) 482-4950

San Joaquin KAY PITTS
(805) 832-4010

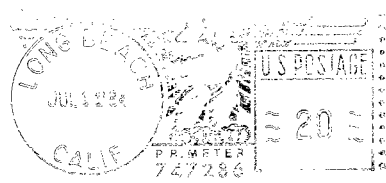
Recommended Reading LUCY E. BIRDSALL
(213) 688-2850

NEWSLETTER of the Pacific Section - American Association Petroleum Geologists is published bimonthly by the Pacific Section.

Material for publication, requests for previous copies and communications about advertising costs should be addressed to JUDY A. RUSSELL, 5000 STOCKDALE HWY., BAKERSFIELD, CA 93309.

CHANGE OF ADDRESS, subscription, and membership inquiries should be directed to: MEMBERSHIP SECRETARY, PACIFIC SECTION AAPG, P.O. BOX 1072, BAKERSFIELD, CALIFORNIA 93302.

PUBLICATIONS COMMITTEE: Pacific Section American Association of Petroleum Geologists, 3600 S. Harbor Blvd., Box 198, Oxnard, CA 93030.



NEWSLETTER
Pacific Section A.A.P.G.
P.O. Box 1072
Bakersfield, California 93302

**FIRST
CLASS**

Richard L. Hester
1911 Montecito Dr.
Glendale, CA 91208

DA-AM



PACIFIC PETROLEUM GEOLOGIST NEWSLETTER

of the Pacific Section

American Association of Petroleum Geologists

AUGUST/SEPTEMBER 1984

PRESIDENT'S CORNER . . .

Before you all realize that a bad penny doesn't always get lost but flips back in the picture, I wish to congratulate the new officers for 1984-85. Many thanks to the candidates what were not elected — I'll not say loser because there is not a loser in the entire bunch. Hope you will try again.

This will be a memorable year. The Pacific Section celebrates its 60th birthday. We are the oldest and the smallest of all the Sections. That may change because the Northwest Petroleum Association (Portland) has decided to join with the Pacific Section. That now makes seven affiliates — welcome Northwest.

One of our own, Ted Bear, takes over the reins this year as President of National AAPG. Ted has worked hard and long for the profession and well deserves the honor, and he brings honor to the Pacific Section.

Lucy Birdsall, the first woman to be honored with a life membership in the Pacific Section will serve as President-elect. Lucy will be the first (I believe) woman President of **any** section. She joins a growing number of women officers and chairwomen of the Pacific Section who are assuming leadership roles — what's the world coming to?

For the first time ever, we will have our annual convention outside the State of California. Arlen Elm will direct our Anchorage meeting to what promises to be our biggest and best. I see this meeting as a Mini-National Convention. Gene Tripp is already in the saddle as chairman of Bakersfield 1986 convention. So when he calls, say "yes" — better yet, call him.

Our membership is growing and treasury is strong. I take credit for none of this; many a wheel was set in motion years ago by former committees, and yes Jim, you were a good President.

ED KARP
President

North Slope Geology

The Pacific Section of the American Association of Petroleum Geologists and Society of Economic Paleontologists will hold a joint symposium on North Slope Geology at its 1985 meeting in Anchorage, Alaska from May 22-24. The objectives of the symposium are to bring together the present state of knowledge of North Slope geology from contributions of the USGS, industry, and

academia. Papers are being solicited which address both the regional geologic framework and specific topics (e.g. structural evolution of the Brooks Range, stratigraphic and structural evolution of the Coastal Plain and Beaufort Sea, sedimentologic aspects of reservoir intervals, source rocks and thermal history). If the response is sufficient, a symposium volume will be published shortly after the meeting.

Tentative titles of talks are due October 1, and abstracts for oral papers are due December 1. For more information, please contact:

Irv Tailleir
U.S.G.S.
345 Middlefield Rd.
Mailstop 187
Menlo Park, CA 94025
(415) 323-8111 X 2139
Paul Weimer
Dept. of Geology
P.O. Box 7909
University of Texas
Austin, Texas 78712
(512) 471-5172

AWG Plan Field Trip

The National Association for Women Geoscientists annual field trip will be held on October 20 and 21. The geology of central coastal California will be covered from Santa Barbara to San Luis Obispo. Emphasis will be on the Miocene volcanics and Monterey Formation. For more information, write AWG-Los Angeles, P.O. Box 5941, Pasadena, CA 91107 or call Chris Bathker (805) 643-2154.

Cal-Section AIPG Holds Meeting

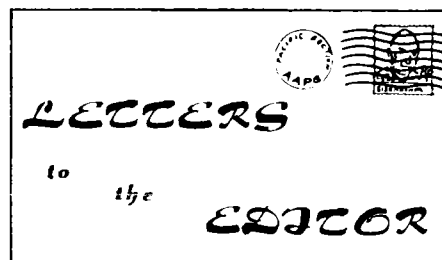
The Annual Meeting of the Cal-Section, A.I.P.G., will be held September 28th, 1984, at the Sheraton Royal Scandinavian Inn, in Solvang.

The Convention theme, "Geological Practice in the California Coastal Area", should provide extremely interesting dialogue for all geologists, planners, etc. Featured presentors at this time, include, Ms. Claire Dedrick, Head of Calif. State Lands; Mr. Tom Tobin, Calif. Coastal Commission; Mr. Ron Heck, Ogle Pet.; Mr. Bill Grant, Regional Manager-Pacific OCS-Minerals Management Service; Mr. Paul Crawford, County of San

Luis Obispo; Ms. Diane Gusman, County of Santa Barbara. As you know, Offshore Sale 80 is impending this year, and we expect interesting reports.

All activities will be held in the Sheraton Royal Scandinavian Inn, a brand new hotel, completed in May. The meeting is arranged on a Friday this year, so the weekend is free to explore the quaint Danish village of Solvang, the new wineries, etc.!

Pre-registration packets, with more detailed information, will be forthcoming in early August.



June 16, 1984

Mr. James R. Weddle
President
AAPG-Pacific Section
P.O. Box 1072
Bakersfield, California 93302

Dear Mr. Weddle

At our Board meeting on April 9, 1984 we accepted your invitation to affiliate with your organization. The Board further voted to designate Mr. Wes Bruer as our representative on your Executive Committee.

I want to apologize for taking so long to resolve the question of affiliation. The Board of NWP, as well as its membership considered your proposal. Unfortunately, in the process of evaluating your proposal, the question exploded into a major issue. We finally brought the question to a vote in April.

We look forward to a close intertie with your organization and its members in the years ahead. Please give me a call if I can be of assistance in furthering this effort.

GARTH T. TALLMAN
President

**PPG DEADLINE
for OCT./NOV. ISSUE
OCTOBER 1**

Alaska

NO REPORT

Coast

NO REPORT

Los Angeles

CALENDAR:

August 23rd — Dr. Steven Bachman — Thurst Faulting in the Evolution of Offshore Central California — New Play Concepts.

September 27th — Topic to be announced.

October 25th — Dr. William Kanen — Geology and Petroleum Potential of Morocco.

Northern California

Due to Harvey Deutsch leaving the Natural Gas Corp. for Amerada Hess in Denver the office of Secretary will be filled by Ed Horan of Natural Gas Corp.

Sacramento

W.J. "Bill" Hunter reports that he has moved back to the Sacramento Valley and is now working for Harold W. Bertholf, Inc. doing oil and gas evaluations and appraisals. The office address is 2775 Cottage Way, Suite 10, Sacramento, CA 95825. The office phone number is (916) 485-9163, and home phone is (916) 481-5906.

Evers' Oil & Gas Information announces the moving of its office from Auburn Blvd. to: 4623 Hazelwood Ave., Sacramento, CA 95821. The mailing address and telephone number remain the same.

The annual Northern California API Golf Tournament and Dinner will be held Sept. 7 at the Yolo Fliers Club in Woodland. Call Mike Young (916) 927-5228 for reservations and information.

San Joaquin

CALENDAR:

San Joaquin Geological Society Fall barbeque — Sept. 14 — \$12.00 ea. prepaid. Call Kay Pitts for more information at 325-9599 ext. 342.

Golf Tournament — for questions call K.C. Thompson at 325-7759 — \$10.00 per person.

Tennis Tournament — call Joe Davidson at 861-6400.

Oct. 9 at American Legion Hall, 7:00 p.m., Don Rogers, Assemblyman from 33rd District. (Ed. note: Don Rogers has been an active supporter of the oil industry. See PPG Newsletter, June/July for letter concerning AB 3 legislation).

Nov. 13 at American Legion Hall, 7:00 p.m., Gary Gassaway, Terra Linda Group, "Seismic Amplitude Measurement for Primary Lithology Measurement (SAMPLE) Case Histories from Tertiary Western Basins."

Recent changes in Bakersfield include Santa Fe Energy moving from LA and merging with Bravo Oil. Of course the Texaco-Getty merger is on everyone's mind.

HELP!

As you probably know, the 1986 Pacific Section AAPG-SEG-SEPM convention will be held in Bakersfield. This is the first call for volunteers. Should the response be minuscule or nonexistent, the next step will be coercion, probably beginning with one broken pinky.

Seriously, we will need lots of help. My first contact will probably be through managerial types, with the hope that you will not be reluctant to volunteer the services of those Pacific Section members on your staff.

Any suggestions, comments, etc., can be directed to:

Gene Tripp —
1986 Convention Chairman
Challenger Minerals Inc.
5531 Business Park South
Suite 200
Bakersfield, CA 93309
(805) 327-5088

Change of Address

Harvey A. Deutsch, Amerada Hess Corp., Dome Tower, 1625 Broadway, Suite 2200, Denver, CO 80202.

Paul Weimer, Univ. of Texas — Austin, Dept. of Geology, P.O. Box 7909, Austin, TX 78712.

R. K. Taylor, MTM, Inc., 6011 Highcourt Pl., Dallas, TX 75240.

Jay A. Dotter, SOHIO, 9401 SW Freeway, Suite 1200, Houston, TX 77074.

Thomas R. Paul, Michigan Oil Co., 609 East Lansing, Jackson, Michigan 49202.

John R. Kleist, Chevron Oil Field Research, P.O. Box 446, La Habra, CA 90631.

Juli G. Osborne, Getty Oil Co., 3810 Wilshire Blvd., Los Angeles, CA 90010.

John Lounsbury Fish, Chevron USA, 488 La Fonda Dr., Ventura, CA 93003.

Craig D. Prentice, 465 Encino Dr., Oakview, CA 93022.

Courtney F. Isselhardt, 7705 Calle Cerca, Bakersfield, CA 93309.

B. Brick Robinson, Cities Service Oil & Gas Corp., P.O. Box 939, Bakersfield, CA 93302.

G. T. Warren, Cities Service Oil & Gas Corp., P.O. Box 939, Bakersfield, CA 93302.

Richard R. Park, Dept. of Interior, BLM, 2015 Deer Valley Rd., Phoenix, AZ 85027.

Martin Trobec, Sundance Oil, Apt. 1008, 820 Fifth Ave., S.W., Calgary, Alberta T2P 0N4 Canada.

Ray S. McCoy, EXLOG, P.O. Box 214676, Sacramento, CA 95821.

Kenneth Carlson, 1425 Clark Ave. #229, Long Beach, CA 90815.

Nancy Ann Brewster, NSF, 1800 G St. N.S., Washington, DC 20550.

Sheldon F. Craddock, P.O. Box 8046, Incline Village, NV 89540.

L. Rogers Hardy, Union Oil Co.—International, 461 So. Boylston, Los Angeles, CA 90017.

Edward Marks, Union Oil, P.O. Box 7600, Los Angeles, CA.

Jack West, Cities Service Oil & Gas Corp., P.O. Box 939, Bakersfield, CA 93302.

New Members

BAKERSFIELD, CA

E. Kevin Beacom, Tenneco; Lawrence R. Smith, Occidental; A. H. Stevens, Tenneco; Raymond J. Washa, Welx; Jack Grippi, Cities; David R. Fowler, Cities.

SOUTHERN CALIFORNIA

Michael Hamilton, State Lands Commission; Melvin J. Hill; A. C. Salisbury; E. Vernon Steohens, Bureau of Land Management; E. L. Kruger, State Lands Commission; Rusty Davis, Schlumberger Well Services; Mike Kratovic, DOG; Mike McCaskey, Union; Michael Mulhern, Schlumberger Offshore; Russell R. Simonson.

Recent Deaths

Ira C. Bechtold, La Habra Heights.

D. H. Jahns, Stanford.

For Sale

Electric Logs, Mud Logs, Well Histories. Sacramento Valley. Contact Sam Ayres, 5030 Katella Ave., Ste. 216, Los Alamitos, CA 90720. 213 — 598-0708.

**PPG DEADLINE
for OCT./NOV. ISSUE
OCTOBER 1**

HEARING ON SEVERANCE TAX BILL, AB 3, CANCELLED

A hearing before the Senate Revenue and Taxation Committee on severance tax bill, AB 3, was cancelled last week at the request of the bill's sponsor. Since there are no regularly scheduled meetings of the committee remaining during the current legislative session, a hearing on the bill will require a waiver of procedural rules and a vote of the full Senate.

The cancellation came after Assemblyman Tom Bates requested of the committee's chairman, Senator Dan Boatwright, that the bill be postponed. As a courtesy, Boatwright announced the delay as a committee decision since a member is allowed to request only two postponements of a bill without forfeiting the right to a hearing; the request by Bates was the third instance in which he has sought a delay.

Reportedly, Bates is still struggling to convince two uncommitted members to support the bill thus assuring the 5 votes needed for passage in committee.

Senate aides have speculated that it will be difficult to schedule a hearing on a subject as controversial as the severance tax. Such a hearing would have to be set during the month of August and might open a floodgate of similar requests for hearings. Another factor in the decision is that the budget reconciliation process has been completed for the year, and there is no apparent need to fund new programs with a severance tax.

CIPA, Monday Morning Report

Pac. Sec. SEG Elects Officers

President Edward H. Harris
Union Oil of California
2323 Knoll Dr., P.O. Box 6176
Ventura, CA 93306
(805) 656-7600

Vice President (Northern District)
Gerald (Geb) Church
Seismograph Service Corp.
3845 Stockdale Hwy.
Bakersfield, CA 93309
(805) 831-1267

Vice President (Southern District)
John German
Union Oil International
911 Wilshire Blvd., Rm. 1250
Los Angeles, CA 90017
(213) 977-7838

Vice President (Western District)
Karen Christensen
Conoco, Inc.
290 Maple Ct., Suite 284
Ventura, CA 93003
(805) 642-8154

Treasurer Alison L. Gay
Gulf Oil Exploration and
Production Company
P.O. Box 1392
Bakersfield, CA 93302
(805) 395-6311

Secretary Marty Sponberg
Gulf Oil Exploration and
Production Company
P.O. Box 1392
Bakersfield, CA 93302
(805) 395-6311

Editor Jill Hoffman
Texaco, Inc.
3350 Wilshire Blvd., Rm. 420
Los Angeles, CA 90010
(213) 739-7257

Past President Alan Hoffman
Schlumberger
1853 Knoll Rd.
Ventura, CA 93003
(805) 644-8145

13,000 EXPECTED TO ATTEND 59TH SPE CONFERENCE

DALLAS — More than 13,000 petroleum industry professionals are expected to gather in Houston Sept. 16-19 for the 59th Annual Technical Conference and Exhibition of the Society of Petroleum Engineers (SPE).

The meeting will address the industry's status as it focuses on "Energy Outlook 1984: Shortage/Surplus."

More than 250 technical papers offer state-of-the-art information on diverse topics ranging from drilling, production, and stimulation to reservoir simulation, gas technology, economics, and professionalism. These technical papers will form the 47-session program presented by outstanding engineers, scientists and managers from around the world.

A keynote session Monday, Sept. 17, will feature three industry leaders representing key segments of the petroleum community. Howard Kauffmann, president of Exxon Corp., will discuss international oil and gas supply. Robert R. Graves, vice president of exploration with Mobil Oil Corp., will review worldwide exploration. Thomas H. Cruikshank, president and CEO of Halliburton Services, will present his outlook for the service and supply industry.

Other highlights include a session on EOR Forecasting and Outlook featuring presentations on the U.S. National Petroleum Council's 1984 EOR study and a "Production Forum" in which participants will discuss preliminary results of work in progress.

In addition to the technical program, the SPE meeting will also include an 85,000 net square foot technical exhibition at the Astrodome, the largest exhibit ever for an SPE Annual Meeting. More than 350 U.S. and international companies will display the latest equipment and services available to the industry.

The Society of Petroleum Engineers is an international technical and professional organization serving engineers, managers and scientists engaged in the exploration, drilling and production phases of the petroleum industry. The Society has more than 52,000 members worldwide.

MUSSELS AND OIL?

Along with oil and gas, offshore platforms in the Santa Barbara Channel provide another harvest.

In seafood restaurants, the harvest is known as "steamers," or succulent California bay mussels. Steamed in wine or garlic butter, they're described by gourmets as "truly delectable."

Known to marine biologists as *Mytilus edulus*, the mollusks are close relatives of oysters and clams. They thrive on the legs and subsurface supports of the platforms that have been placed in the channel to develop offshore oil fields.

Their vast numbers have created a problem for owners of production platforms like Phillips Petroleum Co. and a new business for an enterprising marine biologist.

Phillips operates platforms Hogan and Houchin in Carpinteria Offshore field. The platforms, like others in the channel, attract their share of mussels.

The mussels adhere to the structure with a thin, glue-like secretion called byssus. The bonding qualities are so strong the substance is being used experimentally in dental work.

If mussels aren't removed periodically, their sheer numbers literally will cover the support structure. Their weight and buildup eventually can threaten the safety of the platform.

In the past, Phillips has spent as much as \$200,000 annually to remove mussels from their offshore platforms.

The company even tried an unusual form of biological control. They hired a marine contractor to bring in thousands of starfish — natural predators of mussels — and place them around the platforms. It was hoped the starfish would kill and eat the mussels. It didn't work. There were too many mussels.

A solution to the platform problem appeared in the form of Ecomar Inc., Santa Barbara marine consulting firm. Bob Meek, the company's president, suggested harvesting the mussels from the platforms and selling them to local restaurants.

Meek said, "We saw an opportunity to save Phillips some money and at the same time utilize a renewable source. Then too, the waters around the platforms, being offshore and closer to oceanic currents, are less polluted than the onshore waters where many mussels are harvested."

Twice weekly an Ecomar crew strips more than a ton of mussels from Phillips' two platforms in the Santa Barbara Channel. One diver uses a scraper to knock loose large clusters of shells which cling to the platforms' legs and subsurface supports. Another with a large suction hose attached to a cleaner on the platform gathers the shells immediately, sucking them up to the platform.

The mollusks are placed in large bags and

(Continued on Page 4)

(Continued from Page 3)

towed behind a boat where the craft's wash knocks the barnacles off their shells. Later, they are rebagged and allowed to flush out before going to market.

Nutritionally, mussels are said to produce meat of higher quality than beef, containing more protein, one-fourth the calories, one-sixteenth the fat, three times more carbohydrates and higher quantities of several vitamins and minerals.

At seafood restaurants, a bucket of "steamers" generally sells for \$5 or \$6.

BILL RINTOUL
Bakersfield Californian

VOTE ON AB 3037 POSTPONED UNTIL AUGUST

A vote by the Senate Natural Resources Committee on AB 3037 was postponed last week until August after environmental groups proposed amendments to negate the beneficial effects of the bill. The bill as originally introduced by Assemblyman Frank Hill would amend the California Coastal Act of 1976 to specify that onshore oil and gas exploration are "coastal-dependent." The designation would clarify the intent of current law and assure that the Coastal Commission does not expressly discriminate against onshore oil and gas exploration in its decisions.

CIPA's position, in favor of the bill was presented by Ty Stillman of Nahama and Weagant. His statement included the following:

"Similar to offshore oil and gas development, which is expressly recognized as coastal-dependent and occurs in areas of accumulation within these coastal marine sediments, onshore oil and gas exploration and development must take place where these accumulations are found or may be found. Thus to the extent that the California coastal zone contains potentially valuable oil

and gas resources, exploration and production activities are coastal-dependent. Oil and gas development is not like the construction of an industrial or commercial facility where many alternative locations may exist; rather oil and gas exploration and development must take place where the accumulations are found.

Notwithstanding what CIPA believes to be the unassailable logic of this position, and the clear intent of the Act, on occasion it has been argued by members of the Coastal Commission and Staff, as well as others, that onshore oil and gas exploration and development is not coastal-dependent. The proponents of this position argue that oil and gas exploration and production activities can take place in areas other than the coastal zone, and therefore such activities are not coastal-dependent. A similar argument may be presented that fisheries exist both within and outside of the coastal zone, therefore proposing that fisheries are not coastal-dependent. Such an argument is unjust, unfounded and unportable. CIPA believes this argument is simply contrary to the statutory scheme which establishes a hierarchy giving preference to the development which must take place on the coast over that which need not necessarily take place on the coast, thereby providing guidelines by which the coast can be protected while allowing development which is necessary to the economic and social well being of the state. Undeniably, coastal oil and gas resources cannot be extracted from a location other than one on the coast. Therefore CIPA feels strongly that onshore development is just as coastal-dependent as offshore development which is already recognized as a coastal-dependent activity.

Assembly Bill No. 3037 will provide guidance to the industry, the Coastal Commission, and the public by

PACIFIC SECTION —
AMERICAN ASSOCIATION
PETROLEUM GEOLOGISTS
OFFICERS 1983 - 1984

President STANLEY E. (ED) KARP
(805) 395-9599

President Elect LUCY E. BIRDSALL
(213) 688-2850

Vice President ROBERT G. LINDBLOM
(415) 680-3607

Secretary PAUL HACKER
(805) 834-0462

Treasurer CAROLYN WALCH
(805) 928-3811

Past President JAMES R. WEDDLE
(805) 395-3029

Newsletter Staff

Editor JUDY A. RUSSELL
(805) 395-8292

Associate Editor NANCY A. NEWMAN
(805) 395-8310

Historical BILL RINTOUL

Environmental TOM WRIGHT

Associate Editors

Alaska ARLEN EHM
(907) 333-8880

Coast LORI CAVETTE
(805) 964-9911

Los Angeles GEORGE BABASHOFF
(213) 689-2335

Northern California ED HORAN
(415) 951-7700

Sacramento ERNIE BURROUGHS
(916) 482-4950

San Joaquin KAY PITTS
(805) 832-4010

Recommended Reading LUCY E. BIRDSALL
(213) 688-2850

NEWSLETTER of the Pacific Section - American Association Petroleum Geologists is published bimonthly by the Pacific Section.

Material for publication, requests for previous copies and communications about advertising costs should be addressed to JUDY A. RUSSELL, 5000 STOCKDALE HWY., BAKERSFIELD, CA 93309.

CHANGE OF ADDRESS, subscription, and membership inquiries should be directed to: MEMBERSHIP SECRETARY, PACIFIC SECTION AAPG, P.O. BOX 1072, BAKERSFIELD, CALIFORNIA 93302.

PUBLICATIONS COMMITTEE: Pacific Section American Association of Petroleum Geologists, 3600 S. Harbor Blvd., Box 198, Oxnard, CA 93030.

including onshore development as one of the examples of coastal-dependent activities. This clarification will eliminate the unnecessary debate which presently exists over this issue. The import of this clarification may be immeasurable."

Members interested in actively supporting the bill and working in an ad-hoc group to achieve enactment should contact either Ty Stillman at (805) 323-9075 or Steve Berg-Hansen at the CIPA office. A full text of Stillman's statement is available through the CIPA office.

CIPA, Monday Morning Report

NEWSLETTER
Pacific Section A.A.P.G.
P.O. Box 1072
Bakersfield, California 93302

**FIRST
CLASS**

Richard L. Hester
1911 Montecito Dr.
Glendale, CA 91208

DA-AM





PACIFIC PETROLEUM GEOLOGIST NEWSLETTER

of the Pacific Section
American Association of Petroleum Geologists

OCTOBER/NOVEMBER 1984

PRESIDENT'S CORNER . . .

When I read the list of past leaders of the Pacific Section, I am overwhelmed by the outstanding quality of the officers (plus a nerd or two) who have served the society. Most of them were hard working, dedicated geologists who loved their profession and had a high regard for the Pacific Section.

What I fail to find is a list of the countless committee chairmen and members who performed their duties without fanfare or recognition. This Pacific Section could not function without the following committee members: Judy Russell, Newsletter Editor; Hans F. Schwing, Publications Chairman; Betty Bean, Membership Secretary; Brian and Kay Pitts, Directory Chairpersons; Mark Cole, Finance Chairman; Bob Hindle, Membership Chairman; John Kilkenny, Honors & Awards Chairman; Don Ziegler and H. Victor Church, National Advisory Council Representatives; Don Hallinger, Planning Chairman; Richard L. Hester, Publications Coordinating Chairman; Tom Wright, Legislation; Ernie Rennie, Cross Section Chairman; Sue Kiser, Field Trip Chairwoman; Bill Stanton, Spring Picnic Chairman; Arlen Ehm, 1985 Convention Chairman; and Eugene C. Tripp, 1986 Convention Chairman.

Plus the nine presidents of the associated and affiliated societies. All in all, there are over thirty of us trying to keep the cracks filled and the lines of communication open.

I invite all you young geologists to get involved in the society activities. It is the best way to meet other professionals and to "pay your dues" to your society. Stuffing envelopes, writing letters, taking tickets, checking names, etc., are not exciting jobs, but the results are rewarding. Just ask the above chairmen.

ED KARP
President

1984-85 PAC. SECTION DUES

Just a reminder that your dues are now payable. If your \$5.00 aren't in by October 30, you will be dropped from the membership list. The \$5.00 dues payment is a bargain! Don't be left out and miss an issue of the *Newsletter* or next year's directory. Mail to: Membership Secretary, P.O. Box 1072, Bakersfield, CA 93302.

60th ANNIVERSARY HISTORY

The Pacific Section of AAPG is planning a 60th anniversary publication to be distributed at the 1985 convention at Anchorage.

The purpose of the publication will be to chronicle the history of the Section during the past 60 years by means of photographs, documents, personal anecdotes of members and such other memorabilia that is appropriate for the purpose at hand.

Any material members might wish to submit will be welcomed and considered for publication. Of particular interest are items prior to 1955 since the Section files do not reach back beyond that time.

Photographs submitted will be returned if requested. Any size will be satisfactory. The deadline for receiving material is November 30, 1984. Material should be sent to:

Fred Green
1224 Coast Village Circle
Santa Barbara, CA 93108
(805) 969-5139

NEWSLETTER EDITOR NEEDED

Anyone interested in taking on the role as *Newsletter* editor in 1985-87, please contact Ed Karp (805) 395-9599 or Lucy Birdsall (213) 688-2850. The appointment starts in June but in order to have an overlap in editors we need a warm body in hand by January. Feel free to suggest friends. This is a great opportunity to meet the members of Pacific Section AAPG and provide a service to this organization.

SYMPOSIUM ON EASTSIDE SAN JOAQUIN VALLEY

A symposium on the geology in San Joaquin Valley from approximately Deer Creek south and including the Bakersfield Arch Stevens production has been proposed for the 1986 PACIFIC SECTION CONVENTION to be held in Bakersfield. Those interested in submitting a paper should contact Randy Metz at Tenneco Oil 835-6700 or Sue Kiser at 325-0035.

In conjunction with that, the 1985 PACIFIC SECTION SPRING FIELD TRIP

will review the type localities of the outcropping formations on the eastside San Joaquin Valley and concentrate on stratigraphy. The following year on the 1986 convention field trip we would like to address the structural evolution and its effect on stratigraphy and hydrocarbon trapping. Anyone interested in contributing towards these objectives we have set should also contact Randy Metz at Tenneco 835-6700 or Sue Kiser at 325-0038.

AWG PLAN CAREER CONFERENCE

The Los Angeles chapter of the Association for Women Geoscientists (AWG) is pleased to announce its first Career Options Conference, for student and professional geoscientists. The conference, on Saturday, October 27, 1984, will be held at California State University, Los Angeles, from 9:30 am to 5:00 pm.

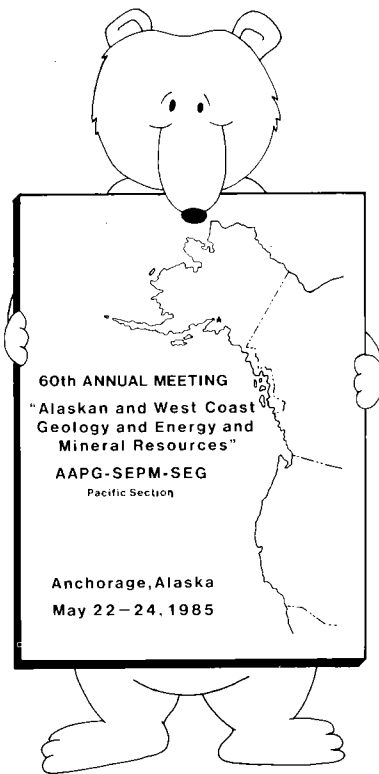
The Career Options Conference will feature geoscience professionals from several different geoscience disciplines and representing a variety of employers. It is geared for the student looking for a first job as well as the experienced professional in the midst of evaluating their current career path and field.

In addition, the Career Options Conference will feature a Personalized Resumé Service where individuals can receive help in tailoring their resumé to fit their needs and experience.

This is one of the few employment and career seminars offered specifically for geoscientists. It will provide an excellent opportunity for students and professionals to meet and form personal contacts with geoscience professionals. Sponsors are Union Oil Co. and Chevron USA.

For more information, and registration forms, please contact Danna Truslow, Conference Organizer (213/595-6611) or Denise D. Pieratti, President, AWG-LA (213/526-7620).

**PPG DEADLINE
for DEC./JAN. ISSUE
DECEMBER 1**



1985 PACIFIC SECTION AAPG-SEPM-SEG CONVENTION

Plans are moving ahead for the largest geological convention to be held in Alaska. More than 70 papers have been submitted to date and we anticipate up to 100 may eventually be submitted. Please refer to the call for papers that you received in the mail and which was printed in the June/July issue. Papers were solicited on the various broad topics listed.

The North Slope Symposium is being sponsored jointly by the Pacific Sections of the AAPG, SEPM, and SEG. An announcement in the August/September issue inadvertently omitted the SEG as a sponsor.

If you would still like to offer a paper, fill out the call for papers immediately and return it to us. A contribution to the North Slope Symposium may be made to either Irv Tailleir as given in the August/September issue or to the Program Committee/85 Conference as given on the committee call for papers. The deadline of December 15, 1984, for submission of abstracts will remain firm.

In general, we are short on papers on the West Coast (exclusive of Alaska), geophysical papers, and poster sessions although we have mailed out nearly 4,000 calls for papers. The bulk of the 70 papers received are oral, non-geophysical papers on Alaska. This is not an Alaska convention, but one that covers the area from the Beaufort Sea to Baja California. Help us round this coverage out by submitting geophysical papers, West Coast papers, and poster session papers.

Our Field Trip Committee has compiled an excellent list of geological field trips as well as those of a more technical industry interest. They involve boat, bus, and plane trips, over-nighting in pipeline camps, touring the Cook Inlet and Prudhoe Bay Fields, and many other features of interest. We also have some that are more scenic in nature in which we will throw in enough geology to remove any guilt from your conscience.

Our entertainment functions are shaping up and will be something that you won't want to miss. These involve a uniquely Alaskan icebreaker, train trips, German band, salmon bake, balloon rides, Eskimo culture, luncheons, and much more.

The next issue will contain more detailed information about some of the other convention functions including reduced air fares. The mailout of the packet is scheduled for January. We need some lead time to determine what our attendance may be. Direct inquiries of a general nature to:

Arlen Ehm
 General Chairman
 1985 Pacific Section Convention
 Alaska Geological Society
 P.O. Box 101280
 Anchorage, AK 99510

Alaska

The approaching winter season has driven the field geologists back to the city and our Alaska Geological Society meetings have started once again. The speaker for our first meeting was Gary Gassaway of the Terra Linda Group in San Rafael, California. A speaker has yet to be scheduled for our October meeting which will actually be held on November 1. On November 29, James Dixon of the Geological Survey of Canada will discuss the Jurassic through Tertiary stratigraphy of the Canadian Beaufort-Mackenzie Bay.

With two out of the first three speakers from the "Outside", does this mean that Alaskans are tight lipped? Maybe they are saving their talks for the 1985 Convention. (See 1985 Convention report elsewhere).

Now that the field season is over, colorful stories are trickling in relative to the macho exploits of the field geologists as well as those events that are in a more humorous vein. We don't have many of the former but we do have one of the latter. While Irv Tailleir and Peter Plumley were camping on the Katakaturuk River, they forded the river and got their boots wet. They didn't dry out overnight which caused Irv to wake up to frozen boots. After working all day in wet boots in the rain, he tried to dry his socks out over the camp fire and proceeded to burn them to a crisp.

Marathon has moved three of their staff from Anchorage to Santa Maria as postulated in the June/July issue. Longtime Alaska Geological Society member, Ernie Lian, moved out along with his record collection

of some 10,000 discs. Now that's a lot of grooving for a guy Ernie's age.

Tom Knock, who is a past president of the Geophysical Society of Alaska and was active in AGS matters, moved also. He took along his record collection which consisted of a lot of sections where he couldn't tie the loop.

Richard Drumheller moved out with them, also. Rich hadn't been up here that long, but he had hung around Ernie and Tom so long that he was probably tainted.

Bob Jones slipped the noose, also, after being up here 13 years with Marathon. He was transferred to Houston and was replaced by Ken Boyd.

The AGS is preparing to compile an updated revision of their membership directory in the spring of 1985. If you are already a member, make sure your dues are paid by January 1, 1985. Throw in a recent, small, black and white, head and shoulders photo. No more high school graduation photos! If you are not currently a member how about joining? For 5 bucks you can stay in touch with the largest geological organization in the Last Frontier.

This is a little long this time, but I missed the last issue. I was out in the field helping Irv beat the fire out of his socks.

Coast

CALENDAR:

Meetings are 6:00 pm (happyhour), 7:00 pm dinner at American Legion Hall.

Oct. 16—Charles D. Savdra, USC, "Reconstructing Oxygen-Deficient Marine Environments, A Refined Model Based on Recent Basins and Example of Its Application to Ancient Strata."

Nov. 20—Tom W. Redin, Union Oil, "Oil and Gas Production from Submarine Fans of Los Angeles Basin."

Dec. 18—Jon R. Schwalback, Exxon Co. USA, "Accumulation Rates in Active Margin Basin, California Continental Borderlands."

The Coast Geological Society has elected the following officers for the 1984-85 year:

President: Mr. Wayne Ziemianski
 Getty Oil Company
 Post Office Box 811
 Ventura, CA 93002
 (805) 643-2154

V. President: Ms. Shiela K. O'Connor
 Union Oil Company
 Post Office Box 6176
 Ventura, CA 93006
 (805) 656-7600

Secretary: Ms. Imelda G. Academia
 Exxon Company, U.S.A.
 Post Office Box D.O.
 Ventura, CA 93002
 (805) 654-6875

Treasurer: Mr. Hal Myers
Exploration Logging of U.S.A.
Post Office Box 6279
Ventura, CA 93006
(805) 654-1941

The CGS Fall Barbeque was held on Saturday, September 22, 1984 at the Lagomarsino Ranch in Ojai.

Personnel News

Edward Magdaleno, past CGS President of 1983-1984, has been transferred from the Exxon Ventura District office to the Exxon Western Division office, Prudhoe Bay Operations.

John (Curly) Thompson, III, has been transferred from the Exxon Western Division office to Houston, Texas, to join Exxon's Alaska-Pacific Exploration group.

Lynn Gray has been transferred from the Union Oil Company Ventura Office to the Western Region Oil and Gas, Alaska Region Office in Anchorage, Alaska.

Susan Barkley is leaving Union Oil Company's Ventura office on August 31, 1984.

Walter Remsen, III, formerly with Argo Petroleum has joined Conoco Exploration in Ventura.

Alice C. Salisbury left Conoco to start a consulting business in Ventura.

Los Angeles

Texaco has announced the following personnel changes in their Western Exploration Division. In the Los Angeles office Donald Bickmore is now Vice President of Exploration. Two former Getty executives, James Houch and Don Erwin, are also working in Los Angeles as Manager of Planning and Statistics and Manager of Exploration Technology respectively. Transferred from Los Angeles to Texaco's Bakersfield office are Mark Cole as Regional Manager of the Western U.S., John Dombrowski as Project Leader of Nevada, western Utah, Los Angeles Basin, Antelope Valley, and Imperial Valley, and Julia Dombrowski as staff geophysicist working the Salinas Valley and Carrizo Plain.

The October 25th L.A.B.G.S. luncheon meeting featured Dr. Joseph Curray of Scripps speaking on the "Geologic History of the Andaman Sea - North Sumatra region." The November meeting will be held a week early on the 15th and will feature Dr. Robert Jones of Chevron Research discussing "Carbonate vs. Shale Source Rock." There will be no December meeting.

Northwest

1983-84 OFFICERS and DIRECTORS

President Garth T. Tallman
Vice President Vern C. Newton
Secretary Barbara B. Portwood
Treasurer Ron L. Hordichok

Board of Directors Garth T. Tallman
Vern C. Newton
Wesley G. Bruer
S. Kyle Huber
Bert B. Mueller

Committee Chairmen

Executive Garth T. Tallman
Program & Entertainment
. Vern C. Newton
Membership Barbara B. Portwood
Public Information Jeff Penick

Wes Bruer is the delegate to Pacific Section AAPG.

CALENDAR:

October 26—Lunch Meeting, Holiday Inn Airport, Portland; Richard Couch, Ph.D., Oregon State Univ., "Structure and Implications for Hydrocarbon Potential in the Northwest."

November 16—Quarterly Meeting, Luncheon, Westwater Inn, Olympia; John Van Bladen, Oregon Natural Gas Devel., "Gas Prices Now and In The Future."

Although it is a little early yet, don't forget to leave time in your busy December schedule for the NWPAA Christmas Party. Scheduled for Dec. 7 at Greenwood Inn, 10700 SW Allen Blvd., Portland, 7:00 p.m.

The Northwest Petroleum Association picnic held at the Trojan Nuclear Park near Rainier, Oregon on August 11, 1984, was enjoyed by a small but festive group of members, wives, family, and friends. Food and drink were plentiful and the weather perfect. More members were needed, however, to help with emptying the keg of beer on hand for the warm weather.

By now everyone should have paid their 1984-85 annual membership dues of \$25. If you have not done so yet, please send it in as soon as you can. Those who did not pay by August 31 were dropped from the membership roster.

San Joaquin

The San Joaquin Geological Society is requesting the donation of a legal size four-drawer file cabinet for storage of historical Society files. Please contact Jack West at Cities Service if you have one available for the Society at (805) 861-6548.

The Getty Exploration and Production offices will remain in Bakersfield. Mark Cole will assume leadership of this new Texaco Regional Exploration office. John Dombrowski is being promoted and transferred to Bakersfield from Los Angeles as a Project Leader. Julia Dombrowski is also being transferred to Bakersfield as a staff geophysicist. John Kovacs and Lou Villanueva are the other two Project Leaders in the Bakersfield Exploration group.

Resignations from the Getty Bakersfield offices include Geoff Nicholson to Conoco in Ventura, Gary Brierley and Richard Frias to Santa Fe Energy in Bakersfield, Frank Kerkow to Texas Crude in Houston, and Barry Phillips, landman, to Tenneco in Bakersfield.

Jack Sheehan, formerly with Santa Fe Energy in Santa Fe Springs has moved to MCO Resources in Los Angeles.

Mike Wilson and Bob Dennis, recently with Gulf Oil have started a geological and geophysical consulting firm called Western Cordillera. Their address is 402 18th St., Bakersfield and phone number is 327-4767. They are currently working on projects in Montana, Nevada and California.

Bravo Oil is officially no longer in existence. Their new office with Santa Fe Energy is now located at 4900 California Av. Suite 400, Tower "A". The phone number is still 322-3992.

Jane Ellis has left Union Oil in Bakersfield to start her own consulting firm. She may be contacted at (805) 831-0214.

Action at Oxy includes Marc Traut returning to Bakersfield from China; Jim Kurfess will be going to Argentina with Steve Binger returning from that country; and George Kendall, in Colombia has been promoted to Chief Production Geologist. Carlos Salinas is now regional manager.

The October 9th meeting featured Assemblyman Don Rogers with a Legislative Update and Current Developments of Interest to the Oil Industry.

Nov. 13 at the American Legion Hall, 7:00 pm, will be Gary Gassaway of the Terra Linda Group on "Seismic Amplitude Measurement for Primary Lithology Estimation (SAMPLE): Case Histories from Tertiary Western Basins". Call Kay Pitts at (805) 325-9599 ext. 342 for reservations after November 7, 1984.

The September Barbeque was a rousing success with over 185 people attending the fete. Special thanks goes to all those who contributed to make it so, including the Analysts, Stratigraphic Blueprint Service, Nevada Bobs, Seacoast Well Logging Service, H & H Oil Tool Co., Schlumberger, Core Lab, Epoch, Geo-Draft, and Baker Packers. We also want to thank the volunteers: Carol Kersac, Teresa Rodriguez, Debbie Lantz, Jackie Chambers, and Kerry Meadors.

There was a Ram 7-iron, Tommy Bolt, Model Lightning 500, found on Hole No. 2 during the golf tournament. Call K.C. Thompson at Geo-Draft (325-7759) to claim.

EVERS' ANNOUNCES CONFIDENTIAL PRINTOUT

Evers' Oil & Gas Information announces the availability on October 1, 1984, of a computer printout of all the wells now listed as confidential with the Division of Oil & Gas in District Six.

(Continued on Page 4)

(Continued from Page 3)

The printout will list the Company, Well Name, Location, Field, County, Status of Well, API Number and date the well comes off confidential.

At this time there are approximately 350 to 400 wells on the list.

With a copy of this printout it will be much easier for you to keep track of the wells you are interested in and whether or not they are confidential.

The price for the first copy will be \$50. Additional copies at a lesser cost.

We are not accepting orders for the printout. Please send your check to:

Evers' Oil & Gas Information
P.O. Box 60032
Sacramento, California 95860

If you have any questions concerning this item, please contact Evers' Oil & Gas, (916) 972-1030.

IN MEMORY OF ROBERT L. BLOCHER, 1921-1984

Robert L. Blocher died in his sleep on February 3, 1984, at his home in Bakersfield, California. Bob was born in Vinton, Iowa on August 31, 1921, but he and his parents, Ralph and Sopha, made the westward migration to California in 1923.

He grew up in and near the California oilfields as his father was employed by Richfield Oil. Bob attended high school at Long Beach, California and worked for Shell during summer vacations. Bob met Mary Jean Tucker while in Bakersfield and courted her while at the University of California at Berkeley. He graduated with a B.A. degree in geology in 1948 after his education was interrupted by World War II. His tour of service saw him rise to the rank of First Lieutenant in the U.S. Army with overseas duty in the South Pacific.

Bob's professional career began as a field geologist working for Shell Oil out of Paso Robles, California with Bakersfield his home office. He married Mary Jean one year after being permanently employed. He had several other field mapping assignments: Humboldt Basin, West Side San Joaquin Valley, and the Cuyama area before becoming an integral part of Shell's exploration team out of the old "Bean House" in Ventura. He was a dedicated petroleum geologist and he became a District Geologist when transferred to Seattle in 1953 to head up a group of surface mapping teams on the Alaska Peninsula. His experiences with and from horse to helicopter crews are shared by many of his contemporaries. An assignment to Shell's Head Office in New York in 1955 made him realize he valued his family's happiness and California-style living more than he desired advancement in his profession; and after six months, when asked to become a permanent

staffer in New York, he declined and opted for a transfer back to the Pacific Coast. He completed his Alaskan tour in 1958 and returned to Long Beach, California. Blocher had the Southern California Offshore under his wing before being reassigned to Ventura and other coastal basins. In the early 1960's he was involved in heavy hydrocarbon prospects, as Shell became acutely aware of thermal recovery opportunities. He was a "key" man in identifying and obtaining potentially profitable properties for "steaming". In 1967 he was transferred to Bakersfield as California District Geologist. He played an active role in Shell's successful "bright spotting" venture in the Sacramento Basin. In 1971 he and his family moved to the Los Angeles area as Shell's Exploration office in Bakersfield was closed. His main effort remained California exploration and mostly Sacramento Basin gas as Shell continued to centralize and closed the Los Angeles office and moved to Houston in 1973. The stay in Los Angeles was punctuated by a real rocker: the San Fernando earthquake of 1971 when his home in Valencia was damaged. Houston's climate did not agree with Bob's demeanor and failing health contributed to Blocher's decision to retire, after 32 cumulative years in 1978. He returned to Bakersfield, California and worked as a consulting geologist; first with Hershey Oil, and most recently with Trio Oil. He had a vast knowledge of California geology and was highly respected by his peers.

Bob was a devoted family man; a very active member in the First Presbyterian Church, a member of the American Association of Petroleum Geologists, and a member of the Libertas Masonic Lodge. He was also a gifted pianist, an avid high Sierra trout fisherman and a camper, and a gourmet chef.

Those of us who knew him and worked with him will remember his many strengths; his hard work ethic, his sense of humor and twinkle in his eyes, his joy of helping others whether at work or play, his ability to do a first-class job in whatever he attempted. Family and friends will miss this compassionate and accomplished man.

Bob leaves his widow, Mary Jean; son, Rev. Steven M. Blocher; and three daughters, Janice E. Blocher, Patricia C. Blocher, and Nancy A. Greenman. His father Ralph Blocher and sister Ruth Brees also survive him. There are three grandchildren.

NAT H. MacKEVETT

INTERIOR TRIMS OCS SALE 80

The Interior Department has toughened air quality restrictions on leases to be offered Oct. 17 off southern California.

It also trimmed 18 more blocks from Sale 80, reducing the area of the sale to 27% of the 11.6 million acres outlined in the final environmental impact statement.

The sale, to be conducted in Los Angeles, will offer 657 blocks covering about 3 million acres.

The tracts range from 3 miles to more than 130 miles offshore and between Point Conception and the Mexican border.

They are in water depths ranging from 13 to 9,000 ft.

Most of the leases will be offered for 5 year terms. Those in 400-900 m of water may be extended to 10 years if a development/production plan has been approved. Blocks in more than 900 m of water will carry 10 year terms.

All of the tracts will carry a one-eighth royalty except 30 blocks with a one-sixth royalty.

Minerals Management Service says the conditional mean resource estimate for the sale area is 190 million bbl of oil and 450 billion cu ft of natural gas.

Stipulations. After it issued the proposed sale notice, Interior agreed to additional California requests that it expand consultation with the state on biological surveys, conduct unannounced oil spill drills, and offer special protection for 72 blocks on the Tanner and Cortez Banks.

Interior and California officials also agreed to special air quality stipulations for Sale 80 similar to those for Central California Sale 73.

The sale notice tells prospective bidders they are required to apply air pollution control technologies for nitrogen oxides emitted from exploratory drilling, provide notification of such drilling activity, evaluate onshore ozone and nitrogen dioxide effects from development/production, and control volatile organic compounds and nitrogen oxide emissions from development/production and tanker activities.

Potential lessees also are told that planned revisions to existing air quality standards will supersede existing regulations as well as the air quality control standards announced for the sale.

Due to objections by the California Coastal Commission, Interior added stipulations easing concerns about commercial fishing, water supplies, vessel traffic, and drilling fluids discharges.

Lessees will be required to minimize conflicts with commercial fishermen.

To protect the mackerel fishery in San Pedro Bay, operators will be required to use jack up rigs where it is feasible and to place pendant buoys at sufficient depths in order to avoid conflicts.

Lessees are required to hold unannounced, semiannual, full scale, oil spill drills.

Other stipulations require pipelines to move oil to shore and process it there initially, if feasible.

Operators may discharge only drilling muds approved by the Environmental Protection Agency into the ocean.

Lessees will be required to document the dispersion of muds if they are discharged within 1,000 m of sensitive marine areas.

Change of Address

Roger B. Brown, Conoco, 3817 N.W. Expressway, Oklahoma City, OK 73112.

Carol A. Evans, Aminoil, P.O. Box 924193, Houston, TX 77292.

W. W. Steiner, Arco, P.O. Box 2819, Dallas, TX 75221.

A. D. Warren, Arco, P.O. Box 51408, LaFayette, LA 70505.

Glenn C. Ferguson, Ferguson & Bosworth, 800 Rockmead Dr., Kingwood, TX 77339.

Bill Langley, Gearhart, SWPFI, 30E Fellow Marine, Berth 202, Wilmington, CA.

Paul Mankiewics, Global Geochemistry, 6919 Eton Ave., Canoga Park, CA 91303.

Stephen Kiouses, Arco, P.O. Box 147, Bakersfield, CA 93302.

Jonathan Parker, Getty Oil, 1601 New Stine Rd., Suite 200, Bakersfield, CA 93309.

Frank Cressey, Quintana, 818 17th St., Suite 610, Denver, CO 80112.

F. D. Didier, Jr., P.O. Box 21, Wofford Heights, CA 93285.

R. R. Johnston, C.O.P.I., P.O. Box 7062, San Francisco, CA 94120.

Richard E. Drumbheller, Marathon, P.O. Box 6020, Santa Maria, CA 93455.

John Woolley, Sun, P.O. Box 2880 CCII, Dallas, TX 75221.

O. W. Fauntleroy, Deminex, 700 N. Pearl, C.B. 340, Dallas, TX 75201.

Allen Y. Tamura, Amerada Hess Corp., 1200 Milan 6th Floor, Houston, TX 77102.

Dougald H. Thamer, Dougald H. Thamer & Assoc., 1084 Cass St., Monterey, CA 93940.

New Members

BAKERSFIELD, CA

James R. Farris, Evans, Carey & Crozier; Lauren E. Scheer, Evans, Carey & Crozier; Hugh Steele, Texaco.

SOUTHERN CALIFORNIA

Sheldon Shuff, Cliffwood Energy; Vic Ferguson, Petrographics; Bruce Lane, Geomage; Daniel M. Weinberg, Conoco; Robert L. Horsey, Geoservices; Stephen P. Mulqueen, California Oil & Gas Div.; John R. Powell, Geotechnical Consultants Inc.

NORTHERN CALIFORNIA

Joan Wollard, Energylog; David S. Marks, Energylog; Jerry W. Reedy.

OTHER STATES

Mark Jamet, Evrafrep, Denver, CO; Peter R. Clute, Independent, Denver, CO.

Mid-Continent Section Call for Papers

The Panhandle Geological Society will host the 1985 AAPG Mid-Continent Section Meeting in Amarillo, Texas, September 22-24. The convention will be conducted at the Amarillo Civic Center with the Sheraton as

the host hotel and overflow at surrounding hotels.

A technical program is being organized around the theme "Habitat of Petroleum in the Mid-Continent." You are invited to submit an oral paper to the AAPG program.

The AAPG program will emphasize field studies, their modes of occurrence within the regional framework, and exploration methods leading to their discovery. A variety of papers are being sought on discoveries and petroleum potential in both frontier and mature areas, structure, stratigraphy, seismic techniques, paleotectonics, geochemistry, clastics and carbonates in the Mid-Continent area.

Abstracts must be received by the Technical Program Chairman by *January 1, 1985*. Mail all abstracts to:

Mr. J. Reed Lyday
Senior Geologist
Pioneer Production Corporation
P.O. Box 2542
Amarillo, Texas 79189
(806) 376-5891

Abstracts must be typewritten, double-spaced and 250 words or less. Abstracts will be selected on the basis of geological significance, informative content, interest, and whether the topic is compatible with petroleum exploration and development in the Mid-Continent area.

Notification of acceptance or rejection will be made by February 1, 1985 to the speaker. Speakers' kits with the convention schedule will be mailed during early April to the speakers' address. Abstracts will be published in the August, 1985 *AAPG Bulletin*.

OCS REVENUE SHARE OFFERED TO STATES

Interior Secretary William Clark has offered to settle a six year dispute between the federal government and seven coastal states over the division of royalties from oil pools underlying the offshore areas controlled by both entities by giving the states 16 and 2/3rds percent of a total revenue pool of \$5.3 billion collected since 1978. For all parties, the settlement, announced two weeks ago, would provide \$890 million.

While each coastal state controls the leasing of offshore tracts out to a three mile limit, and thus collects revenues generated by those tracts, the argument has been over revenue for tracts beyond the three-mile limit. For a variety of reasons, the states claim they should be compensated for oil or gas that is produced on federal tracts, and transported onshore through the states.

California and four other states — Alaska, Alabama, Mississippi and Florida — have continued to negotiate the royalty split since 1978. Two states, Texas and Louisiana, dropped out of the discussions and have sued the government. In a federal court decision last spring, Texas won a ruling entitling the state to one-half of the \$1.3 billion in royalties from off its coast. The ruling is expected to be upheld.

While Interior Department officials have commented on their hopes that the proposed settlement could serve as a model for the division of future royalty income from jointly owned oil pools, none of the states have accepted the offer. Officials in both Texas and Alabama have indicated the states will reject the offer.

In a related issue, Reagan Administration officials told Congress that they will recommend that President Reagan veto legislation allotting another \$300 million in offshore revenues to 35 states and territories for programs to offset the environmental effects of OCS production on their coastlines.

CIPA, *Monday Morning Report*, 10/20/84

APPLICATIONS FOR DRILLING ON UPSWING

Onshore drilling in California appears to be on an upswing as the number of applications to drill new oil and gas wells filed in the first six months of 1984 rose by 86 percent over the number filed in the same period in 1983.

According to totals released by the Department of Conservation, Division of Oil and Gas, 2,427 applications were filed in the first six months of 1984 compared with 1,304 in the first six months of 1983. The totals do not include applications for wells drilled in federal offshore areas.

M. G. Mefferd, State Oil and Gas Supervisor, attributed the increase to expansion of major steamflood projects. He said the rise in applications was also caused by increased activity in the Wilmington oil field where new wells are being added to expand waterflood projects.

CIPA, *Monday Morning Report*, 10/20/84

"And
In
Closing"



Stimulating
Programs

ALASKA — 1985

New Publications Available

The new 1984 publications are:

	UNIT NO.	TOTAL COST	COPY COST
GB 55 Springfield Trip Guidebook — San Andreas Fault-Cajon Pass to Wrightwood (AAPG) 1984.		\$12.00	

CS 24 New! Cross Section — Correlation Section for Northwest Oregon.		\$ 4.00	
---	--	---------	--

Found in the basement of the Northern California Geological Society, a limited supply of:

Spring Field Trip 1954 — Capay Valley-Wilbur Springs West Side Sacramento Valley, California.		\$ 2.50	
---	--	---------	--

Subtotal			
Postage & Handling		\$1.50	
Total		\$	

All orders must be **Prepaid**

Send to:
 Publications Committee
 Pacific Section AAPG
 Suite 198
 3600 S. Harbor Blvd.
 Oxnard, CA 93030

Make checks payable to: **Publications Pacific Section AAPG**

Ship order to:

For more complete list see Dec. 1983/Jan. 1984 PPG *Newsletter* or write Publications Committee at address above.



**"Mt McKinley
 Here I
 Come!"**

ALASKA — 1985

**Exciting Geological & Industrial
 Field Trips**

NEWSLETTER
Pacific Section A.A.P.G.
 P.O. Box 1072
 Bakersfield, California 93302

**FIRST
 CLASS**

Richard L. Hester
 1911 Montecito Dr.
 Glendale, CA 91208

DA-AM

**PACIFIC SECTION —
 AMERICAN ASSOCIATION
 PETROLEUM GEOLOGISTS**

OFFICERS 1983 — 1984

<i>President</i>	STANLEY E. (ED) KARP (805) 395-9599
<i>President Elect</i>	LUCY E. BIRDSALL (213) 688-2850
<i>Vice President</i>	ROBERT G. LINDBLOM (415) 680-3607
<i>Secretary</i>	PAUL HACKER (805) 834-0462
<i>Treasurer</i>	CAROLYN WALCH (805) 928-3811
<i>Past President</i>	JAMES R. WEDDLE (805) 395-3029

Newsletter Staff

<i>Editor</i>	JUDY A. RUSSELL (805) 395-8292
<i>Associate Editor</i>	NANCY A. NEWMAN (805) 395-8310
<i>Historical</i>	BILL RINTOUL
<i>Environmental</i>	TOM WRIGHT

Associate Editors

<i>Alaska</i>	ARLEN EHM (907) 333-8880
<i>Coast</i>	IMELDA ACADEMIA (805) 654-6875
<i>Los Angeles</i>	GEORGE BABASHOFF (213) 689-2335
<i>Northern California</i>	ED HORAN (415) 951-7700
<i>Sacramento</i>	ERNIE BURROUGHS (916) 482-4950
<i>San Joaquin</i>	KAY PITTS (805) 325-9599
<i>Recommended Reading</i>	LUCY E. BIRDSALL (213) 688-2850

NEWSLETTER of the Pacific Section — American Association of Petroleum Geologists is published bimonthly by the Pacific Section.

Material for publication, requests for previous copies and communications about advertising costs should be addressed to JUDY A. RUSSELL, 5000 STOCKDALE HWY., BAKERSFIELD, CA 93309.

CHANGE OF ADDRESS, subscription, and membership inquiries should be directed to: MEMBERSHIP SECRETARY, PACIFIC SECTION AAPG, P.O. BOX 1072, BAKERSFIELD, CALIFORNIA 93302.

PUBLICATIONS COMMITTEE: Pacific Section American Association of Petroleum Geologists, 3600 S. Harbor Blvd., Box 198, Oxnard, CA 93030.

**PPG DEADLINE
 for DEC./JAN. ISSUE
 DECEMBER 1**





PACIFIC PETROLEUM GEOLOGIST NEWSLETTER

of the Pacific Section
American Association of Petroleum Geologists

DECEMBER 1984/JANUARY 1985

PRESIDENT'S CORNER . . .

The November 18, 1984 issue of the L.A. Times carried a review of engineer Richard L. Meehan's book, — *The Atom and the Fault* by Lee Dye. Engineer Meehan's contention is that the real villains in the siting of nuclear plant debates are the geologists — "those strange historians of Mother Earth who masquerade as scientists" (article quote). Meehan writes "Geologists are the physicians, the shamans perceiving that technology has taken us too far, we find omens, cracks in the bones of the Earth." By contrast, engineers believe there is an engineering solution to every problems, so says Meehan.

I don't want to make this a geologist vs. engineer slugfest, but Meehan's accusations are unfair and unfounded. Geology is an observational and interpretive science. No two oil fields, oil wells, mountains, basins, faults or rocks are exactly the same. Compilation of all available data defies computer control. Geologists raise questions that the engineers fail to ask. It is when engineers and geologists work together that many of the problems are solved. If engineers can solve every problem, what happened at Three-Mile-Island, Tacoma Narrows, Hyatt Regency, San Fernando Veterans Hospital, oil well blowouts — the list goes on.

ED KARP
President

RECENT MOVES

Santa Fe / Bravo Merger

The merger between Santa Fe Industries and Southern Pacific Companies has caused Santa Fe Energy (oil arm of Santa Fe Industries) and Bravo Oil (oil operations arm of Southern Pacific Companies) to join together.

Santa Fe Energy (the dominate company) has created a new division office in Bakersfield. Santa Fe has moved their exploration department from Santa Fe Springs to join the Bravo group in the new office.

There will be two districts in the Western Division.

- 1 — California, onshore & offshore.
- 2 — Frontier district — serving Alaska, Washington, Oregon, Nevada and Arizona.

The company expects to be active in exploration in the coming months.

The new office is located at: 4900 California Ave., Tower A, Bakersfield, California 93309, (805) 322-3992.

Atlantic Moves

Mr. Paul Stroud, Atlantic Oil Company, announced the moving of the production office from Paramount, California to Lamont.

Their new address is: P.O. Box 625, Lamont, CA 93241, (805) 322-1744.

New Office

CELERON OIL & GAS COMPANY has announced the opening of its Pacific Coast Office at: 111 West Micheltoarena, Santa Barbara, CA 93101, (805) 966-0831.

J. S. (Jack) Cunningham is Manager of Exploration and Thomas W. Ingwers is Chief Landman.

Celeron Oil & Gas is a subsidiary of Goodyear Tire and Rubber Company.

Examination Locations

Examinations for registration as a geologist and geophysicist and for certification as an engineering geologist will be scheduled twice this year between February 1 and November 30 and are expected to be given at the following locations: Sacramento, Los Angeles, San Francisco.

EXAMINATION SCHEDULE

Examinations will be given:

- Geology & Geophysicist — May 17, 1985
- Engineering Geologist — May 18, 1985

Final filing date for May examinations — February 18, 1985.

Geology & Geophysicist — November 15, 1985

Engineering Geologist — November 16, 1985

Final filing date for Novmeber examinations — August 16, 1985.

For applications and information contact: State Board of Registration for Geologists and Geophysicists, 1021 "O" Street, Sacramento, CA 95814.

Los Angeles

Many thanks are extended to the outgoing slate of officers of the L.A.B.G.S.

1985 L.A.B.G.S. OFFICERS

President Marty Hall-Burr
Union Oil Company

Vice President Michael D. Mitchell
Petroleum Testing Service

Secretary John Bickley
Aminoil Inc.

Treasurer Richard Gubitssa
Union Oil Company

The January 24th, 1985 meeting will feature Ed Marks speaking on the "Geology and Petroleum Potential of Kutai Basin, East Kalimantan, Indonesia."

San Joaquin

CALENDAR:

January 8 — Chuck McCollough — Occidental's Cano Limon Discovery, Llanos Basin, Colombia.

February 12 — Sweetheart Dinner — Herman Schymiczek — Geologic Processes and Ancient Civilizations of the Aegean . . . A Travelogue.

This month's personnel moves include: Robert Chanpong and Winston Boodoo of Oxy moving to Libya, with Wally Partridge being transferred to Houston. Bob Countryman has been loaned to Chevron Overseas in Bakersfield by Gulf. Mike Hoi has left Gulf to work for Elf Aquitaine in Houston. Union Oil has brought Akbar Sherriff back to Bakersfield to serve as Area Development Geologist. Sherry Schussler has also been moved to Bakersfield from Ventura by Union.

The 1985 AAPG Pacific Section Spring Field Trip and Barbeque is scheduled for June 21, 1985. Sue Kiser and Randy Metz are looking for volunteers to help with the barbeque. If you have never donated your talents to the Society, this would be a good time to start. Sue and Randy can be contacted at 325-0038 and 395-8484 respectively.

California Offshore Leases Attract Few Bids

The first lease offering of coastal tracts off the Southern California coastline since June of 1982 drew marginal interest from bidders. Out of 657 parcels offered for lease, bids were submitted on only 25 covering 125,000 acres, and competitive bids centered on only three of the tracts. The total of the high bids was only \$66.2 million.

More than two-thirds (320 tracts) of the
(Continued on Page 2)

(Continued from Page 1)

originally proposed 22.5 million acres was deleted from the sale in response to ongoing pressure from coastal cities with environmental concerns or at the request of the Defense Department.

Comments made by William Grant, regional director of the Minerals Management Service, as well as other officials of the federal agency, indicated that the lackluster bidding was not unexpected due to the dilution of oil reserve potential resulting from the removal of the prime areas from the offering, in addition to predominantly higher exploration costs and depressed oil prices.

Of the tracts offered, 17 are in the Santa Barbara Channel, a passage of ocean between the mainland and the Channel Islands. The remaining eight tracts are outside the channel, Interior officials said.

The average bid per acre was \$585, as compared to \$801 per acre offered at the 1982 sale. Major bidders were Texaco, Atlantic Richfield, Conoco, Chevron and Exxon. Awards of leases are subject to determination by the Minerals Management Service that the bid is high enough based on existing knowledge of the hydrocarbon potential of the area.

CIPA, *Monday Morning Report*, 10/22/84

New Members

SOUTHERN CALIFORNIA

David E. Willis, Union; James R. Ashby; Henry M. Lieberman, Union; Louis Lopez, USGS; Charles R. Owens, Calif. Div. of Mines & Geology; Imelda G. Academia, Exxon; Wendy Bartlett; Curtis A. Peck, Chevron; Henry Donelson, Baker Packers; Helmut Ehrenspech, T.W. Debblee Geol. Foundation; M. John Neale, Chevron; Susan L. Beierdorfer, Energylog; Roy Burlingame, Petroleum Testing Service; Gene Byrd, Montgomery Drilling; Michael Coburn, Texaco; Bill Holvey, Drilling Specialties; Larry E. Monroe; Edward M. Tilbury; Mike Oldershaw; Orland Smith; George Furniss, Burns Geol. Expl.; Patrick L. Abbott, San Diego State Univ.; Jack R. Allan, Chevron; Hans F. Ashauer; Jeanie Barnett, Chevron; Jean Young, Union; Thomas C. Larson, Chevron; John P. Filert, Gearhart.

NORTHERN CALIFORNIA

H. D. Erickson, Kaiser Energy; Polly Lowry, Energylog, Inc.; William B. Benzer, Jr., Energylog, Inc.; Dennis R. Allen; Elizabeth Babcock, State Water Resources Control Board; John A. Beery, Energylog; Steward W. Black, Arkoma Prod.; Robert L. Beatie, Napa Valley College; John V. Bent, Jr., Stanford Univ.; John M. Alexander; Kenneth J. Bird, USGS.

ALASKA

Barbara J. Bascle, U.S. Minerals Mgmt. Service; Robert J. Bascle, U.S. Bureau of Land Mgmt.; David R. Glass, Schlumberger; Jeani L. Crichlow, U.S. Minerals Mgmt. Service.

OREGON - WASHINGTON

Richard A. Bowen, N.W. Oil Report; Ronald C. Bartley; Peter W. Bowers, Jr.; Quentin R. Query.

OTHER STATES

Todd R. Hathaway, Marathon; R. J. Young, Mobil; Charles N. Green, Exxon.

Change of Address

Dale S. Kunitomi, Celeron Oil, 111 W. Micheltorena, Santa Barbara, CA 93101.

Frederick A. F. Berry, 144 Camino Escondido, Santa Fe, NM 87501.

D. H. Dailey, Cities Service, P.O. Box 3908, Tulsa, OK 74102.

Robert Deacon, Arco, P.O. Box 5540, Denver, CO 80217.

Hans Eric Sheline, Conoco, P.O. Box 1267, Ponca City, OK 74603.

Geoffrey E. Nicholson, Conoco, 290 Maple Ct., Suite 281, Ventura, CA 93003.

C. Dahlstrom, Chevron, P.O. Box 7147, San Francisco, CA 94120-7147.

1985-86 Membership Directory

The 1985-86 AAPG-SEPM-SEG Membership Directory is underway! All changes from the 1984-85 membership cards must be received by January 1, 1985 in order to accommodate printing deadlines. All changes should be sent to Kay Pitts, Getty Oil, P.O. Box 11148, Bakersfield, CA 93389. Members who have not received their 1983-84 Directory should contact the Publications Committee, Pacific Section AAPG, Suite 198, 3600 So. Harbor Blvd., Oxnard, CA 93030. The Directory will be sent to you for a mere \$1.50 postage and handling charge.

Summer Geology Tour of Southern Germany and the Alps June 28 — July 15, 1985

The Natural History Foundation of Orange County and Chapman College are proud to present their summer, 1985, tour of southern Germany and the Tyrolean Alps. The tour will visit classic geologic sites that include the Jurassic fossil beds of Solnhofen and Holzmaden, the Gross Glockner Glacier Fields, karst features in the Jura, the world-famous gem cutting schools of Idar, the complex structural geology of the Alps, salt mines, and the Rhine graben. There will be ample time for hiking.

Additionally the tour will include a cruise on the Rhine, presentations by local geologists, guidebooks with maps, theater tickets, Medieval and Roman banquets, first class accommodations, all travel, visits to museums, castles, and universities, and much more. Tour participants may earn three semester units of college credit. For a colorful brochure, contact C. J. Stadium, 7290 Corsican Dr. #C, Huntington Beach, CA 92647.

For Sale

Bakersfield College has acquired the well files of an independent oil company in the Rocky Mountain area. Included in the file are over 25,000 scout tickets (4x6 cards) on wells drilled prior to 1968 covering the states of Colorado, Nebraska, Wyoming, Utah, New Mexico, Montana, North Dakota, Arizona, Oregon, and Washington.

There are over 1000 Rocky Mountain electric and driller's logs available also. Please contact Ed Karp at Bakersfield, College, 1800 Panorama Dr., Bakersfield, CA 93305, phone (805) 395-9599, if you are interested in purchasing this data.

Updated M-J Microfische System with reader/printer. If interested call Hanna Petroleum Company, (805) 872-5540. Attn: Saif Ahmad.

AWG Elect Officers

The Los Angeles Chapter of the Association for Women Geoscientists has selected their new Executive Committee officers:

President Danna Truslow
Earth Technology Corporation
Executive Vice President . Thomas Yamada
Texaco
Vice President, Finance . . Leigh Brewer
Southern California Gas
Vice President, . . . Margaret VanBuskirk
Membership Cal Poly Pomona
Editor Katherine Hayes
T.R.W.

The new officers will serve from October 1984 to October 1985. For more information on the Los Angeles Chapter of the Association for Women Geoscientists, contact Danna Truslow at (213) 595-6611.

HEARINGS HELD ON WPT/ STEAMFLOOD BILL

A revenue subcommittee of the House Ways and Means Committee held a hearing on H.R. 4799, a bill which exempted from the Windfall Profits Tax (WPT) an amount of crude oil equal to the residual oil used in "tertiary" recovery processes. The practical effect of the bill would allow California oil producers to substitute residual oil for crude oil used in the generation of steam for enhanced recovery projects without paying additional WPT. Currently leasehold use of crude exempts the crude from the WPT. Bakersfield area Congressman Bill Thomas authored the bill.

Ninety-eight percent of all U.S. steamflood projects are located in California. Roughly 35 percent of California oil production is produced in steam flooded fields.

CIPA, *Monday Morning Report*, 10/20/84

**PPG DEADLINE
for FEB./MAR. ISSUE
FEBRUARY 1**

**PACIFIC SECTION AAPG
FIELD SUMMARIES**

EAST GRIMES EXTENSION

by Nahama & Weagant Energy Company

DISCOVERY WELL: Nahama & Weagant Energy Company
"East Grimes" #1, Section 3, T14N,
R1E M.D.B. & M., Sutter County,
CA Total Depth: 7825'

DISCOVERY DATE: June 1983

INITIAL PRODUCTION: 2,500 MCF/day

PRODUCTION FORMATION: Upper Cretaceous
Forbes

TRAP: Structural-Stratigraphic

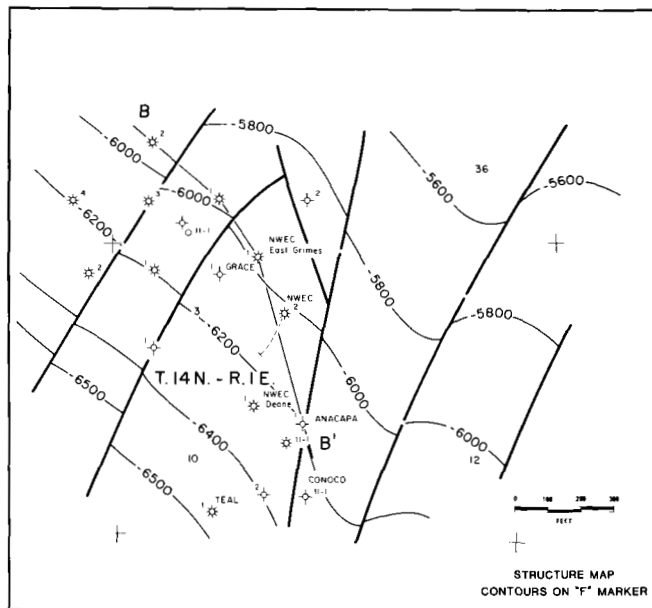
AVERAGE WELL DEPTH: 7700'

DEEPEST WELL: Grace Petroleum "Moroni" #1, 8080'

TOTAL WELLS COMPLETED
(or being completed): 6

PRODUCING WELLS
as of June 1984: 4

PROVEN ACREAGE: 600 ± acres



STRUCTURE: The Grimes Field lies on the east flank of the Sacramento Valley gas basin. The field is composed of a complex of faulted stratigraphic traps. The lenticular sands are generally elongate with north-northwest — south-southeast alignment.

STRATIGRAPHY: The Forbes formation is composed of dark gray siltstones and claystones with interbedded sandstones. The formation was deposited in a moderately deep water environment with the beds generally onlapping to the northeast. The sand lenses within the Forbes formation were probably deposited by broad turbidity currents. The sand accumulated in elongate bodies roughly parallel to the depositional strike probably due to the action of bottom contour currents. There is also seismic evidence that in this portion of the field, early deep-seated faulting formed topographic ramps or terraces on the seafloor which became favorable sites for deposition of clean, well-winnowed sands, conducive to the early accumulation of gas. The sandstone is fine grained and friable and ranges from very clayey to well sorted.

RESERVOIRS: The Forbes sands provide reservoirs with 5' to 50' of net pay. The porosities range from 25 to 30% and the permeabilities range from 15 to 75 md. The gas is dry with an average specific gravity of 0.565 and a caloric content of 975 to 1015 BTU/SCF. E-logs often give only a qualitative indication of gas saturation due to thin interbedding of sand, silt and clay and are generally used in close conjunction with mudlogs and drill stem tests to evaluate reservoirs. The area is characterized by abnormal pressures at depth. Initial reservoir gradients are in the range of 0.5 to 0.7 psi/ft.

DRILLING: Current practice is to set 13-3/8" surface casing to 300'-600', a 9-5/8" protection string below 2700' (or below the Tehama sands) and 5-1/2" casing through the productive interval. The wells are generally drilled with a weighted lignosulfonate mud to control abnormal pressures.

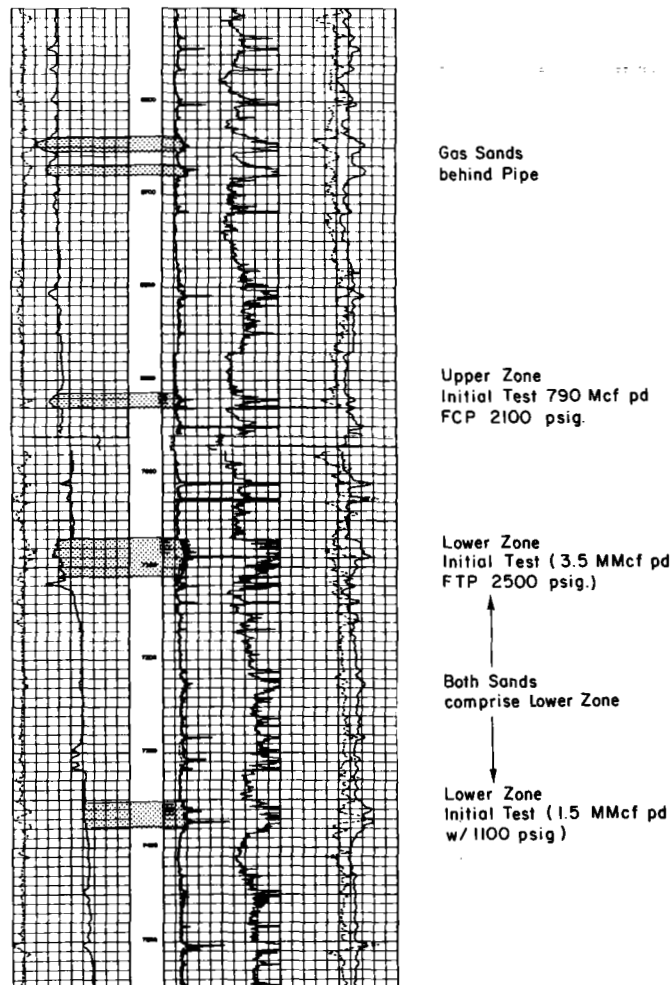
CONCLUSION: The Main Grimes field has produced 412.6 BCF of gas through 1983. The remaining gas reserves as of January 1, 1984 are approximately 100 BCF.

There are currently five wells capable of production and one well awaiting completion in the East Grimes Extension Area. Sales began in December of 1983 to P.G. & E. Preliminary reserve estimates are two to three BCF per well, with the potential existing for a number of additional wells. The East Grimes Extension Area has continued to be actively explored for new pools by Arkoma, Conoco, Lear, Nahama & Weagant and Samson.

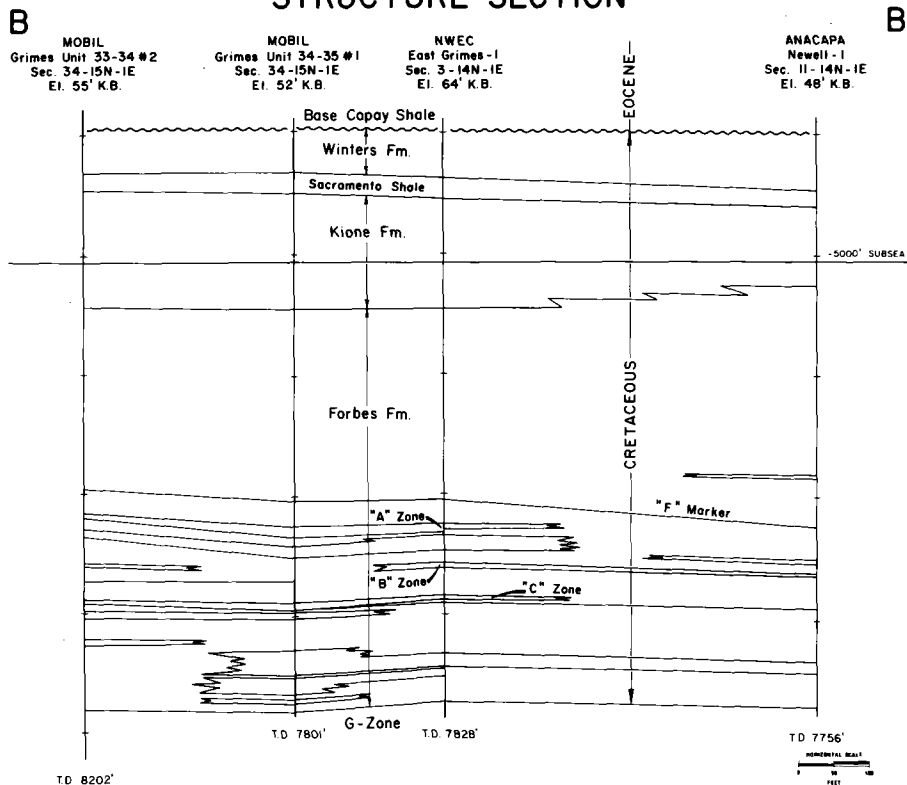
E - LOG

NWEC DEANE - 1

SHOWING FORBES PRODUCING SANDS



EAST GRIMES STRUCTURE SECTION



PACIFIC SECTION —
AMERICAN ASSOCIATION
PETROLEUM GEOLOGISTS

OFFICERS 1983 - 1984

President STANLEY E. (ED) KARP (805) 395-9599
 President Elect LUCY E. BIRDSALL (213) 688-2850
 Vice President ROBERT G. LINDBLOM (415) 680-3607
 Secretary PAUL HACKER (805) 834-0462
 Treasurer CAROLYN WALCH (805) 928-3811
 Past President JAMES R. WEDDLE (805) 395-3029

Newsletter Staff

Editor JUDY A. RUSSELL (805) 395-8292
 Associate Editors NANCY A. NEWMAN (805) 395-8310
 RUSS ROBINSON (805) 872-5810
 Historical BILL RINTOUL
 Environmental TOM WRIGHT

Associate Editors

Alaska ARLEN EHM (907) 333-8880
 Coast IMELDA ACADEMIA (805) 654-6875
 Los Angeles GEORGE BABASHOFF (213) 689-2335
 Northern California ED HORAN (415) 951-7700
 Sacramento ERNE BURROUGHS (916) 482-4950
 San Joaquin KAY PITTS (805) 325-9599
 Recommended Reading LUCY E. BIRDSALL (213) 688-2850

NEWSLETTER of the Pacific Section - American Association Petroleum Geologists is published bimonthly by the Pacific Section.

Material for publication, requests for previous copies and communications about advertising costs should be addressed to JUDY A. RUSSELL, 5000 STOCKDALE HWY., BAKERSFIELD, CA 93309.

CHANGE OF ADDRESS, subscription, and membership inquiries should be directed to: MEMBERSHIP SECRETARY, PACIFIC SECTION AAPG, P.O. BOX 1072, BAKERSFIELD, CALIFORNIA 93302.

PUBLICATIONS COMMITTEE: Pacific Section American Association of Petroleum Geologists, 3600 S. Harbor Blvd., Box 198, Oxnard, CA 93030.

Phil Witte Honored

The Bakersfield Desk and Derrick Club has honored lifetime Kern County oilman Phil Witte as its "Oil Person of the Year."

Witte is a principal in two companies, Witte Enterprises, and Black Gold Oil Company. Witte has served as CIPA's Oilfield Theft Committee chairman for three years, and in that position was instrumental in the passage of AB 955 last year. Bakersfield Assemblyman Don Rogers authored the bill to provide for penalty under the state penal code when self-applied identification numbers placed on oilfield and farm equipment were removed by thieves.

Witte was awarded CIPA's Glenn C. Ferguson award in 1983 as an individual "who has greatly contributed to the success of and advanced the understanding of and appreciation for California's independent crude oil and natural gas producers."

CIPA, *Monday Morning Report*, 11/5/84

California Supreme Court May Consider Suit To Bar Getty Acquisition

State Attorney General John Van de Kamp has asked the California Supreme Court to consider a suit seeking to undo Texaco's ac-

quisition of Getty Oil Company. The Court is expected to rule by mid-December whether or not it will hear the suit.

Van de Kamp's action came after a lower court rejected his attempt to block the merger. In his filing, the State Attorney General said the merger threatens California's independent refiners because Getty is the largest supplier of crude oil to independents and it "can be expected (that Texaco will) eventually divert those resources to its own needs."

CIPA, *Monday Morning Report*, 11/12/84

NEWSLETTER
Pacific Section A.A.P.G.
 P.O. Box 1072
 Bakersfield, California 93302

**FIRST
CLASS**

Richard L. Hester
 1911 Montecito Dr.
 Glendale, CA 91208

DA-AM

