



# PACIFIC PETROLEUM GEOLOGIST NEWSLETTER

of the Pacific Section  
American Association of Petroleum Geologists

VOLUME 31

JANUARY/FEBRUARY, 1977

NUMBER 1/2

## Coast

Vicious rumors that the Coast Section has had nothing to report in the last two NEWSLETTERS are totally unfounded. Actually, we just had to search around for someone who knows how to write.

For those who aren't already aware, the 1977 officers of the Coast Geological Society are:

President ..... Al Hanson  
Getty Oil  
Vice-President ..... Tom Hopps  
Argo Petroleum  
Secretary ..... Dick Berger  
Argo Petroleum  
Treasurer ..... Harry Browne  
Consultant

The Coast Society continues to meet the third Tuesday of each month (October-June) at 7:00 p.m. at the Wagon Wheel Restaurant in Oxnard. Our speakers for the remainder of the year include:

February 15—Hal Weber, "Geology of Ventura County"  
March 15—Peter Van DeCamp "Lower Tertiary Stratigraphy of the Santa Ynez Mountains"  
April 19—Unknown  
May 17—David Howell, "Title to be announced"  
June 21—Dale Kunitomi, "Underground Gas Storage at Honor Rancho"

The Society's Continuing Education Committee will offer a short course to be presented later in the year. "Deep Water Sand Reservoirs—Modern Concepts—Ancient Case Histories," an advanced course designed for those with good background in turbidite theory emphasizing applied exploration models. Lecture to be held September 30, 1977, in Ventura, California, to be followed by field trip October 1, 1977. The speaker will be Oscar Weser of Scripps Institute of Oceanography. Applied exploration and development techniques will be emphasized. More specific details will be announced later.

DICK BERGER

## Alaska

Howdy Again You All!

Greetings again from the land of long shadows and longer break-ups. This year seems that winter went south and Alaska has been sloshing thru break-ups ever since Thanksgiving in the day time and slipping and sliding around after dark. When it rains during the day, then freezes every night, it doesn't take long for the roads, sidewalks, and parking lots to get slicker than a hockey rink. It doesn't take many falls to make you feel as beat up as a hockey puck too. You can step out of your building, aim at your car, and hope that you grab the door handle as you slide by. Think that we are going to have to send "outside" for enough snow for the Fur Rondy dog races. There is not even enough snow for me to zip across Alex Sisson's yard on my machine. Probably just as well, since he is AGS President this year and has committees on everything else, he would probably form an "Enforcer Committee" to catch me any way.

Speaking of the AGS and committees, Chairpeople Arlen Ehm and Irv Palmer have obtained 26 or so top notch speakers for our 1977 symposium on the "The Relationship of Plate Tectonics to Alaskan Geology and Resources." Some of the papers will cover most, if not all, of the Alaska future sale areas, and some of the speakers' ideas differ to the extent that the sessions will not be controlled by a Chairman or Mediator but by a referee equipped with boxing gloves. The date is April 3-6 at the Capt. Cook Hotel, Anchorage. Address inquiries to: Alaska Geological Society, Inc., P.O. Box 1288, Anchorage, Alaska 99510 — or call Irv Palmer 278-3571, Arlen Ehm 333-8880 or Alex Sisson 276-7600, all are area code 907. You all come, it only costs 30 bucks to register and the abstract is worth that.

Buenos snowshoes.

DICK E. ATCHISON

## GROUP FLIGHTS 1977 AAPG CONVENTION

Washington, D.C.

June 12, 1977      June 16, 1977

Group space has been reserved for AAPG members planning to fly to Washington, D.C. for the 1977 annual meeting. Airline regulations regarding groups have been revised, and this year it is necessary that a minimum group of 40 must travel together in both directions. We will coordinate these groups of 40 departing both June 11 and June 12, but it will be necessary to book as early as possible and be firm about your return date of travel. In the event that you cannot meet these regulations, we will endeavor to find the most economical airfare available from your originating city. If you are interested in taking advantage of these savings wherever applicable, please complete appropriate form and send it to TRAVEL UNLIMITED, INC. as soon as possible, and state the number of reservations needed and the names of the interested participants.

Send all replies to:

Travel Unlimited Inc.  
AAPG Flights  
P.O. Box 25187  
Houston, Texas 77005  
Attention: Wendy Hansen  
(Telephone: 713/526-3161)

## Sacramento

This will advise you that the officers of the Sacramento Petroleum Association for 1977 are:

Charles H. Fry, President  
Ben Cahill, Vice President  
Don Pinnell, Secretary-Treasurer

The Association meets every Wednesday noon at the Steak and Ale restaurant, 7218 Franklin Boulevard, Sacramento (South area).

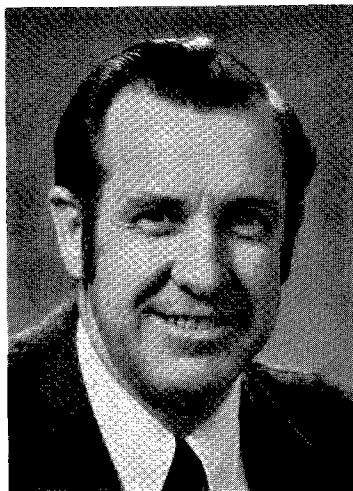
D. B. PINNELL

# Pacific Section

## CANDIDATES FOR OFFICE

1977-78

### For President



**RALPH P. CAHILL**  
Argo Petroleum Corporation

#### EDUCATION:

Graduated with Masters degree from University of Iowa in 1953.

#### EXPERIENCE:

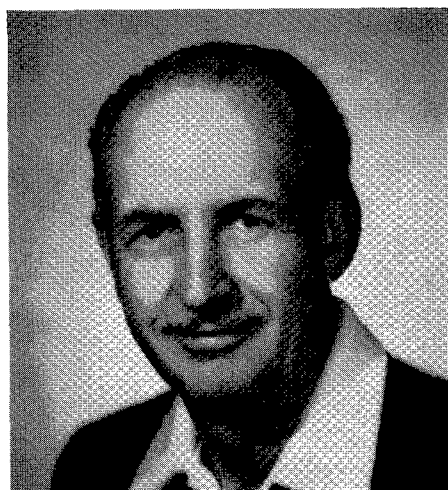
Joined Texaco in 1953 at Taft, California, transferred to Ventura area in 1954. Has been active in Southern California since working with Homestake Prod. Co., consulting and Argo Petroleum Corporation.

#### AAPG ACTIVITIES:

Officer in Coast Geological Society; Secretary 1972-73; Vice-President 1974-75; President 1975-76.



### For President



**ROBERT N. HACKER**  
Consultant

#### EDUCATION:

University of Houston, 1936-1939; University of Oklahoma, 1939-1941, Mechanical Engineering; AB, University of California, 1948, MA, 1950.

#### EXPERIENCE:

Union Oil Company, Santa Paula, 1950-1956; Lloyd Corp., Ltd., Beverly Hills, 1956-1965; Consulting Geologist, 1965 to present.

#### AAPG ACTIVITIES:

Coast Correspondent, 1955-1956; Chairman L.A. Geological Forum, 1961-1962; Treasurer, Pacific Section, 1963-1964; Vice President, Pacific Section, 1968-1969; District Representative, 1968-1969; Delegate, L.A. Basin Society, 1974-1976; Chairman, House of Delegates, Executive Committee, 1975-1976; Alternate Delegate, L.A. Basin Society, 1976-1978.



### For Vice-President



**JOHN K. CASSELL**  
Standard Oil Company of California

#### EDUCATION:

Received AB in Geology from Colorado College, 1947. Received MS in Geology from Stanford University, 1949.

#### EXPERIENCE:

Employed by Standard Oil Company of California (Western Operations, Inc.) in 1949. Worked for Standard since then as field geologist, subsurface geologist, district geologist and paleontology supervisor in the Great Basin, Pacific Northwest and Central and Southern California. Present assignment is as staff geologist—environmental affairs for Chevron U.S.A. Inc.—Western Region in the San Francisco office.

#### AAPG ACTIVITIES:

Served as General Chairman for the 1970 Pacific Section meeting in Newport Beach, and has served on various other committees for the National and Pacific Section meetings.

### For Vice-President



**THOMAS L. WRIGHT**  
Chevron Overseas Petroleum Inc.

#### EDUCATION:

BS, Stanford University, 1951, MS, 1952.

#### EXPERIENCE:

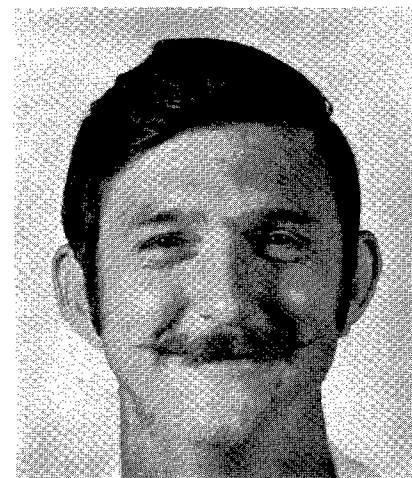
Senior Geologist, Chevron Overseas Petroleum Inc., San Francisco. Standard Oil Co. of California, Western Operations, Inc., 1952-1972; Great Basin, northern California, Pacific Northwest, Alaska, Southern California. Chevron Overseas Petroleum Inc., 1972- , Latin America.

#### AAPG ACTIVITIES:

Delegate, 1970-71; Chairman, Environmental Geology Committee, 1974 to present. Pacific Section: Editor, 1965-66; Treasurer, 1966-67; Continuing Education Chairman, 1967-69; Budget and Finance Committee (Chairman), 1970-71; 1976 Convention Finance Chairman. Northern California Geology Society: Vice-President, 1973; President, 1973-74.



### For Secretary



**John A. Minch**  
Instructor, Saddleback College

(continued on page 5)

# *Fifty-Second Annual Meeting*

## **PACIFIC SECTION AAPG, SEPM, SEG**

**BAKERSFIELD, CALIFORNIA • APRIL 20-23, 1977**

# **TENTATIVE TECHNICAL PROGRAM**

### **THURSDAY MORNING — APRIL 21 JOINT AAPG, SEPM, SEG**

#### **KEYNOTE ADDRESSES**

- 9:00 a.m.—Perspectives in Energy Problems, *John D. Moody*, President, American Association of Petroleum Geologists.
- 9:20 a.m.—Up With Basics—Basic Geology Included—A Silurian Case History, *Robert H. Shaver*, President, Society of Economic Paleontologists and Mineralogists.
- 9:30 a.m.—Exploration in Perspective, *Roy Lindseth*, President, Society of Exploration Geophysicists.
- 9:50 a.m.—Petroleum Resources, Operating Costs, and Reserves, *L. F. Ivanhoe*, Occidental Petroleum.
- 10:35 a.m.—Stratigraphic Control of Oil, *Glenn S. Visher*, University of Tulsa.
- 11:20 a.m.—Exploration Frontiers, *Richard P. Sheldon*, Chief Geologist, USGS.

### **THURSDAY AFTERNOON — APRIL 21 — AAPG**

- 2:00 p.m.—Permeability Traps in the Gatchell Sand, *Robert Schneeflock*, Tenneco Oil Company.
- 2:45 p.m.—Geochemistry in Petroleum Exploration, *Issac R. Kaplan*, University of California, Los Angeles.
- 3:30 p.m.—Exploration in the California Offshore, *Burdette Ogle*, Ogle Petroleum.
- 4:15 p.m.—To be announced.
- 5:00 p.m.—Business Meeting.

### **THURSDAY AFTERNOON — APRIL 21 — SEPM**

- 2:00 p.m.—The "Blue Fan" and the Suggested Origin of the Coalinga Oil Field, Fresno County, California. *B. A. MacPherson*, Continental Oil Company, Denver.
- 2:20 p.m.—The Biostratigraphy and Paleoecology of the Type Rosario Formation (Sensu Stricto), El Rosario de Arriba, Baja California del Norte, Mexico, *Deborah Patterson*, University of California, Santa Barbara.
- 2:40 p.m.—Source and Dispersal of Holocene Sediments on the Continental Shelf of Ghana, West Africa, *B. N. Akpati*, California State University, Northridge.
- 3:00 p.m.—Mexican-American Lyropectens; New Correlations Between Baja California and California, *Judith Terry Smith*, Stanford University.

3:20 p.m.—Lacustrine Facies of the Pliocene Ridge Basin, California, *M. H. Link*, Los Angeles Harbor College, *R. H. Osborne*, University of Southern California.

3:40 p.m.—Age and Correlation of the Skonun Formation, Queen Charlotte Islands, British Columbia, *W. O. Addicott*, USGS, Menlo Park.

4:00 p.m.—Lower Eocene Radiolaria from Southwest Oregon, *G. A. Miles*, University of Oregon, *W. N. Orr*, University of Oregon.

4:20 p.m.—Boundstone Masses in the Devils Gate Limestone (Devonian, Nevada), *M. A. Murphy*, University of California, Riverside, *J. Dunham*, University of California, Riverside.

4:40 p.m.—Permian Stratigraphy and Deposition in the Southern Inyo Mountains North of Cerro Gordo, California, *Paul Stone*, University of California, Berkeley.

### **THURSDAY AFTERNOON — APRIL 21 — SEG**

- 2:00 p.m.—Borehole Geophysics — Exploration Applications, *George R. Pickett*, Colorado School of Mines.
- 2:35 p.m.—Interpretation of Borehole Gravity in Southern San Joaquin Basin, *Larry A. Beyer*, USGS, Menlo Park.
- 3:10 p.m.—A Statistical Evaluation of Error Factors in Precise Gravimetry, *Rose B. Grannell*, California State, Long Beach.
- 3:45 p.m.—Interpretive Lessons from Three Dimensional Modeling, *Fred Hilterman*, University of Houston.
- 4:20 p.m.—Characteristics of Marine Seismic Sources, *Sharon Misener*, Western Geophysical Company.

### **FRIDAY MORNING — APRIL 22 — AAPG**

- 9:00 a.m.—Gas Indications in the Bering Sea, *Alan Cooper*, USGS, Menlo Park.
- 9:45 a.m.—Sedimentation and Trapping Mechanisms in Upper Miocene Stevens Turbidites of the Southeastern San Joaquin Valley, *Bruce A. MacPherson*, Continental Oil Company, Denver.
- 10:35 a.m.—Gas Exploration in the Sacramento Valley, *Ted Bear*, Bear & Kistler, *Phil Kistler*, Bear & Kistler.
- 11:20 a.m.—To be announced.

**FRIDAY MORNING — APRIL 22 — SEPM**

(NOTE: The SEPM Meetings on Friday will be a symposium on Paleozoic Paleogeography of the Pacific Coast. All papers presented will appear in the SEPM Pacific Section Symposium Volume.)

- 9:05 a.m.—Cambrian and Latest Precambrian Paleogeography and Tectonics in the Western United States, *John H. Stewart*, USGS, Menlo Park, *Christopher Ann Suczek*, Stanford University.
- 9:25 a.m.—Ordovician Paleogeography of the Western United States, *Reuben J. Ross, Jr.*, USGS, Denver.
- 9:45 a.m.—Silurian and Devonian Paleogeography of the Western United States, *Forrest G. Poole*, USGS, Denver, *Arthur J. Boucot*, Oregon State University, *Charles A. Sandberg*, USGS, Denver.
- 10:05 a.m.—Some Lower Paleozoic Biofacies in the Western United States, *William B. N. Berry*, University of California, Berkeley.
- 10:50 a.m.—Paleogeographic Implications of Ophiolites: The Ordovician Trinity Complex, Klamath Mountains, California, *Nancy Lindsley-Griffin*, University of California, Berkeley.
- 11:10 a.m.—Stratigraphic Relations and Possible Paleogeographic Models of Lower Paleozoic Rocks of the Eastern Klamath Mountains, Northern California, *A. W. Potter*, Oregon State University, *P. E. Hotz*, USGS, Menlo Park, *D. M. Rohr*, Oregon State University.
- 1:35 a.m.—Paleozoic Rocks of the Northern Sierra Nevada, California: Their Structural and Paleogeographic Implications, *J. A. D'Allura*, University of California, Davis, *E. M. Moores*, University of California, Davis, *L. Robinson*, University of California, Davis.

**FRIDAY MORNING — APRIL 22 — SEG**

- 9:00 a.m.—Robust Wavelet Extraction by Structural Deconvolution, *Dale G. Stone*, Seismograph Service Corporation.
- 9:35 a.m.—Geophysical Methods for Mapping Stratigraphic Traps, *Roy O. Lindseth*, Teknica Ltd.
- 10:10 a.m.—Developments in Filtering Seismic Data, *John Sherwood*, *Hugh Adams*, *Clum Blum*, *David Judson*, *Jin Lin*, *Bruce Meadours*, Digiton, Inc.
- 10:45 a.m.—Simplan-Simulated Plane Wave Exploration, *M. T. Tanner*, Seiscom Delta Inc.
- 11:20 a.m.—Finite Difference Modeling Solutions to the Wave Equation, *Rusty M. Alford*, *K. R. Kelley*, *N. D. Whitmore*, Amoco Production Research.

**FRIDAY AFTERNOON — APRIL 22 — AAPG**

- 2:00 p.m.—Oregon's Oil and Gas Possibilities, *Vern Newton*, Oregon State Department of Geology and Mineral Industries.
- 2:45 p.m.—How Oil Migrates in Clastic Sediments, *Robert J. Cordell*, Suntech Inc.
- 3:30 p.m.—To be announced.

**FRIDAY AFTERNOON — APRIL 22 — SEPM**

- 2:00 p.m.—Mississippian Paleogeography of the Western United States, *Forrest G. Poole*, USGS, Denver.

- 2:20 p.m.—Pennsylvanian Paleogeographic Patterns in the Western United States, *Mark Rich*, University of Georgia.
- 2:40 p.m.—Paleogeography and Tectonics of the Permian System of the Western United States, *Calvin H. Stevens*, San Jose State University.
- 3:00 p.m.—Sedimentation and Tectonics Along the Upper Paleozoic Continental Margin of the Great Basin, *Robert C. Speed*, Northwestern University.
- 3:20 p.m.—Paleotectonic Significance of the Calaveras Complex, Western Sierra Nevada, California, *R. A. Schweichert*, Columbia University, *J. Saleeby*, University of California, Berkeley, *O. T. Tabisch*, University of California, Santa Cruz, *W. H. Wright III*, California State University, Sonoma.
- 3:40 p.m.—Paleozoic Rocks in Eastern Oregon and Western Idaho, *T. L. Vallier*, USGS, Menlo Park, *H. C. Brooks*, Oregon State Department of Geology and Mineral Industries.
- 4:00 p.m.—Paleozoic Rocks of Northwest Washington and Adjacent Parts of British Columbia, *Wilbert R. Danner*, University of British Columbia.
- 4:20 p.m.—Paleozoic Plate Tectonics and the Evolution of the Cordilleran Continental Margin, *William R. Dickinson*, Stanford University.

**WRITTEN PAPERS ONLY**

- Evidence of Middle Devonian Orogeny in Northeastern Washington, *C. Greenman*, *B. D. E. Chatterton*, *A. J. Boucot*, and *W. B. N. Berry*.
- Review of Paleozoic Rocks in the Klamath Mountains, Northern California, *W. P. Irwin*.
- Deposition and Deformation of Lower Paleozoic Western Facies Rocks, Northern Nevada, *K. B. Ketner*.
- Late Paleozoic Orogeny and Sedimentation, Southern California, Nevada, Idaho, and Montana, *K. B. Ketner*.
- Silurian Through Lower Devonian Paleogeography in the Cordilleran Geosyncline of Central Nevada, *J. C. Matti*.
- Late Ordovician Through Early Devonian Paleogeography of the Southwestern Great Basin, *R. H. Miller* and *C. A. Walch*.
- Reinterpretation of Lone Mountain Dolomite, Central Nevada, *K. M. Nichols* and *N. J. Silberling*.

**FRIDAY AFTERNOON — APRIL 22 — SEG**

- 2:00 p.m.—Extracting Optimum Signal from the Vigroseis System, *Bill E. Davitt*, Chevron Standard Ltd.
- 2:35 p.m.—Sign Bit Recording and Processing of 1000 Channel Seismic Systems, *Sam J. Allen*, Geophysical Systems Corporation.
- 3:10 p.m.—Extraction and Interpretation of the Complex Seismic Tract—Geological Interpretation, *Robert E. Sheriff*, *D. Frye*, *F. Koehler*, *M. T. Taner*, Seiscom Delta Inc.
- 3:45 p.m.—Three Dimensional Seismic Exploration and Exploitation, *Ben F. Giles*, Geophysical Service Inc.
- 4:20 p.m.—Lunar Geophysics—An Update, *John Minear*, NASA.

## CANDIDATES FOR OFFICE . . .

(continued from page 2)

### EDUCATION:

Ph.D., UC Riverside, 1972; MS, San Diego State College, 1966, BA, 1964; AA, Pasadena City College, 1960; Engineering, Fullerton Jr. College, 1958.

### EXPERIENCE:

Instructor, Div. of Natural Sciences, 1972 to present, Saddleback Community College; Geologic Consultant, 1973-1974; Lecturer, Department of Geology, San Diego State University, 1971-1972; Geologic Consultant, 1968-1971; Research Assistant, Geography Department, UC Riverside, 1970; Geologic Consultant, NSF, 1967 and 1968; Assistant Professor of Geology, Rio Hondo Jr. College, 1966-1968; Exploration Geologist, Texaco Inc., 1965; Production Geologist, Mobil Oil Co., 1964.

### AAPG ACTIVITIES:

General Chairman of 49th Annual Convention of the Pacific Sections of the AAPG, SEPM, SEG, 1974 in San Diego.

✱ ✱ ✱

#### PACIFIC SECTION — AMERICAN ASSOCIATION PETROLEUM GEOLOGISTS Executive Committee

President ..... EUGENE F. REID  
(805) 324-6771  
President Elect ..... VERN C. JONES  
(916) 482-4950  
Vice-President ..... JOHN N. TRUEX  
(213) 436-9211  
Secretary ..... DON WM. REYNOLDS  
(805) 324-6571  
Treasurer ..... HOWARD E. STARK  
(805) 642-9509  
Past President ..... WESLEY G. BRUER  
(805) 324-4600  
Editor ..... JOHN W. LIDSTROM  
(213) 385-0515

#### Newsletter Staff

Editor ..... JOHN W. LIDSTROM  
Assistant Editor ..... RON J. SCHMELA  
Membership Secretary ..... BETTY BEAN

#### Associate Editors

Alaska ..... DICK E. ATCHISON  
(907) 272-5417  
Coast ..... TOM HOPPS  
(805) 648-2514  
Los Angeles ..... TOM REDIN  
(213) 945-1221  
Northern California ..... OTTMAR F. KOTICK  
(415) 948-0950  
Northwest .....

Sacramento ..... TERRY PLUMB  
(916) 482-8490  
San Joaquin ..... JEFF SMITH  
(805) 324-6571  
Recommended Reading .... LUCY E. BIRDSALL  
(213) 688-2850

NEWSLETTER of the Pacific Section—American Association Petroleum Geologists is published monthly by the Pacific Section.

Material for publication and requests for previous copies should be addressed to JOHN W. LIDSTROM, TEXACO INC., 3350 WILSHIRE BLVD., L.A., CALIF. 90010.

Material received by the 10th of each month will be included in the following issue.

CHANGE OF ADDRESS, subscription, and membership inquiries should be directed to: MEMBERSHIP SECRETARY, PACIFIC SECTION AAPG, P.O. BOX 1072, BAKERSFIELD, CALIFORNIA 93302.

## For Secretary



**STANLEY E. KARP**  
Professor, Bakersfield College

### EDUCATION:

BA, University of Southern California, 1949; MA, Washington State University, 1968.

### EXPERIENCE:

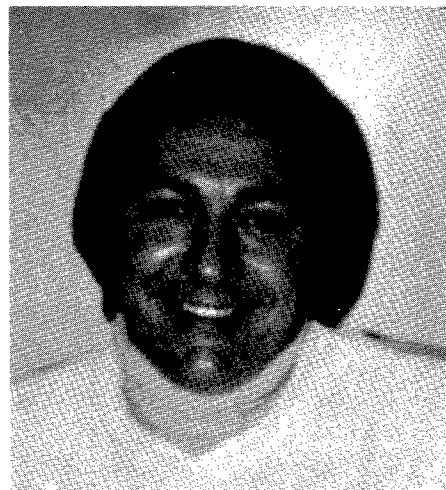
Project Manager, Fairchild Aerial Surveys, 1950-1954; Exploration Geologist, Gulf Oil Corp., 1954-1959; Exploration Geologist, Kern Oil Corp., 1959-1963; Science Teacher, Foothill High School, 1964-1967; Professor of Geology, Bakersfield College, 1967 to present.

### AAPG ACTIVITIES:

San Joaquin Geological Society — Secretary-Treasurer, 1962; Vice-President, 1974-75; President, 1975-76. Pacific Section AAPG—Editor, Field Trip Guidebook, Carrizo Plains, 1962; Editor, selected papers, Vol. 1, 1962. National AAPG—Strategic Committee on Public Affairs, 1975-77; Distinguished Lecture Committee, 1975-77.

✱ ✱ ✱

## For Treasurer



**JAMES H. DORMAN**  
Tenneco Oil

### EDUCATION:

BS, Mississippi State College, 1954; MA, University of Missouri, 1955.

### EXPERIENCE:

Nine years with the California Oil Company, a subsidiary of Standard of California: New Orleans, LA — Off-shore Division Paleontologist from 1955 through 1964. Eleven years with Tenneco Oil Company: a) Lafayette, LA — Biostratigraphy and Subsurface Geology, b) Houston, TX — Domestic and International Biostratigraphy, c) Corpus Christi, TX — District Geologist, d) Houston, TX — Staff Geologist on Exploration V.P. staff, e) Bakersfield, CA — Division Exploration Geologist.

### AAPG ACTIVITIES:

AAPG and San Joaquin Geologic Society.

✱ ✱ ✱

## For Treasurer



**NANCY B. OLSEN**  
Texaco Inc.

### EDUCATION:

BA, University of Southern California, 1972; Graduate studies, Oregon State University, 1972-1973.

### EXPERIENCE:

Writer, environmental impact reports, 1973-1974; Geologist, Texaco Inc., 1974 to present.

### AAPG ACTIVITIES:

Treasurer, L.A. Basin Geological Society, 1975; Secretary, L.A. Basin Geological Society, 1976.

# Northern California

FROM BEAU MONDE we send a dab of chit, a speck of chat, a joke or two, a flash of thigh, and if space permits, a little reference to geology as Mase Hill suggests, as little as possible.

DEPT. OF OFFICERS — For those who know not, our current selections are: President, VERNE STEPHENS; Vice President, WILLARD CLASSEN; Secretary, LES McGOON; Treasurer, JOHN O'ROURKE. President elect is Roger Alexander. Counselors are William Effinger and Gordon Oakeshott.

✻ ✻ ✻

By the time you read this, an AAPG Distinguished Speaker, Mr. J. M. Browning, president of J. M. Browning Consultants, Ltd., will have presented his talk to our Nor Cal Geological Society on February 24th. His subject: AULACOGENS & MEGA-

SHEARS — NATURAL HABITAT FOR OIL AND MINERAL DEPOSITS. Now this extraordinary subject may send little bits of coiled wonderment jiggling across your vibrating imagination. Go ahead, consult AGI Glossary of Geology and find, as I did, that *aulacogen* is Schatsky's term for a fault-bounded intercratonic trough or graben. *Megashear*, same source, is a term used by Carey (1958) for a strike-slip fault of such extent that it underlies the entire orogen.

By the way, did you know that the AGI Glossary fails to contain the term *whinstone*? Wendell Cochran, editor of GEOTIMES, says that the term is fairly common in British usage and the glossary people will consider it in the forthcoming revision. Look it up in the American Heritage Dictionary if you're burning with curiosity.

✻ ✻ ✻

The second AAPG Distinguished Lecturer, scheduled for Nor Cal on March 24, 1977, will be Dr. Bryan W. Logan of the University of West Australit. He will speak on INTERPRETATION OF CARBONATE ROCK SEQUENCES; SEDIMENTARY OR METAMORPHIC MODELS? Our president, Verne Ste-

phens, says he hopes Dr. Logan will be able to remove the question mark at the end of the subject. After all, the world is so full of question marks. Dip into one and a dozen more spring up.

✻ ✻ ✻

CONGRATULATIONS to Bill Rintaul for an outstanding job on his book SPUDGING IN, published by the California Historical Society, 1976.

It's a vastly interesting narrative of personal experiences in pioneer days of California oilfields as recalled by many old timers. It is not a history—as some complain—and was never meant to be. We compliment Mr. Rintaul for his excellent job of selecting and assembling a mass of miscellaneous information into an enjoyable tale.

OTT KOTICK

## 1977 SYMPOSIUM

Alaska Geological Society

April 3-6, 1977

*The Relationship of Plate Tectonics to Alaskan Geology and Resources.*

Direct inquiries to:

Alaska Geological Society

P.O. Box 1288

Anchorage, Alaska 99510

## NEWSLETTER

Pacific Section A.A.P.G.

P.O. Box 1072

Bakersfield, California 93302



# PACIFIC PETROLEUM GEOLOGIST NEWSLETTER

of the Pacific Section

American Association of Petroleum Geologists

VOLUME 31

MARCH/APRIL, 1977

NUMBER 3/4

## 52nd ANNUAL MEETING PACIFIC SECTION AAPG, SEPM, SEG

As you should all know by now, the 52nd Annual Meeting, AAPG-SEG-SEPM Pacific Sections, is to be held April 20-23, 1977, at the Civic Auditorium, Bakersfield, California.

If you have not yet made plans to attend, hurry up — time's a-wastin'. Late developments include:

1. The acceptance by Mr. William C. Arntz, Federal Energy Administration, Regional Administrator for nine Western states, of an invitation to speak at the annual Joint Luncheon on Thursday, April 21. Mr. Arntz has been asked to give us his comments on the forthcoming federal energy program, especially as it relates to oil and gas exploration. Tell your boss that you *have* to come, in order to find out what good old Uncle Sam has in store for us. In fact, he might even want to come too.

2. The reservation of a block of seats for conventioners and wives (or whoever) at the Buck Owens Rodeo, Saturday night, April 23, 1977, at 7:30 p.m. Come and meet the *real* Bakersfield people, just like they're depicted in the *Los Angeles Times*, as well as seeing a big time rodeo.

An outstanding technical program has been put together by our "chairpersons." Highlights include addresses by John D. Moody, Robert H. Shaver and Roy Lindseth, Presidents, respectively, of the AAPG, SEPM and SEG; Richard P. Shelton, Chief Geologist, USGS, and other luminaries too numerous to mention. Note the late addition on the program of talks on the Yowlumne Oil Field, Crossroads Gas Field, and the Lower Cook Inlet.

The geopolitical seminar preceding the convention also has its share of luminaries.

A complete (we think) and accurate (hopefully) schedule of events, together with a few special notes is as follows:

**Wednesday, April 20—**

11:00 a.m.—AAPG Golf Tournament,  
(continued on page 2)

## Memorial

In late October 1976 Martin Van Couvering was notified that he was to be the recipient of the AAPG Human Needs Award for outstanding services to mankind in the field of geology. He was delighted, but, with mixed feelings, felt that he was not deserving of this coveted award. At the age of 88 he was still vitally interested in petroleum geology and geologists as well as the affairs of AAPG. He was looking forward to attending the 62nd annual AAPG Convention in Washington, D.C. in June of 1977, with special significance because the date of presentation of the award would fall on his 89th birthday. On December 19, 1976, he suddenly passed away ending an outstanding career that spanned a period of 56 years.

Martin Van Couvering was born in Allendale, Michigan on June 15, 1888. He attended school in Michigan and California, and received his B.S. in Mining Engineering from Oregon Agricultural College in 1916. He was employed as a surveyor and mining engineer until his entry into military service in World War I.

He attended the Saumur Artillery School in France first as a student and later as an instructor. With the coming of the Armistice, he was transferred to the Army of Occupation in Germany. He returned to the United States in 1919.

In 1920, he became an inspector for the California State Department of Oil and Gas and soon became Chief Petroleum Engineer in the Los Angeles office.

In 1922, he started his career as a consultant in Long Beach, California and remained self-employed the rest of his life. During those 54 years, he acted as consultant to most of the major oil companies in California and many smaller ones, as well as for individual clients. His professional activities took him to all parts of the United States, and the western provinces of Canada.

## MARTIN VAN COUVERING 1888-1976

Early in his career he was called upon to act as an expert witness in oil law suits. The largest case in which he acted in this capacity occurred in 1938 and was concerned with the Kettleman Hills North Dome; during the trial, he spent 44 days on the witness stand including 10 days of cross-examination. The three dimensional models that he prepared for this case were exhibited widely — at the 1939 San Francisco World's Fair and the Tulsa Oil Show. They were at Caltech for many years and are presently in use for instructional purposes at California State College at Long Beach.

Up to this time, his career emphasized petroleum engineering. The issues in the Kettleman case were primarily geological and were responsible for the beginning of his second career in the field of petroleum geology. At the age of 51, he decided that petroleum geology held the greatest fascination for him and returned to school at the University of California at Los Angeles to work for a Master's degree in geology, which he received in 1941. At a time when many men are beginning to think about retirement, Martin's enthusiasm was on the upswing as he embarked on his new career.

Successful as a petroleum geologist, he found time to devote to many human needs including those of geologists, students, geological organizations, and the general public.

He had been a member of AAPG since 1924, but now that his emphasis was on petroleum geology he became more active in Association affairs. In 1946 he organized a study group in stratigraphy that convened every two weeks. It was at one of these early meetings that I first met him. I had recently been transferred from Bakersfield to Los Angeles and was not well acquainted with other members of the profession. He made a special effort to see that I met the

(continued on page 3)

# ANNUAL MEETING . . .

(from page 1)

Kern City Golf Course. If you have not preregistered, and would like to play, please contact Bill Comstock, 324-6771 as soon as possible. Golfers are needed.

12:00 noon—Men's Tennis Tournament, Rio Bravo Tennis Ranch. Contact Fred Porter, 325-9308, if you have not pre-registered, or show up with racket in hand.

12:00 noon—APGS Luncheon, Civic Auditorium.

1:00-7:00 p.m.—Registration, Civic Auditorium.

1:00-5:00 p.m.—APGS Geo-political Symposium, Civic Auditorium.

6:30-9:00 p.m.—Icebreaker Cocktail Party, Civic Auditorium.

## Thursday, April 21—

7:30 a.m.—Speaker's Breakfast.

8:00 a.m.—Registration, Civic Auditorium.

9:00 a.m.—AAPG-SEPM-SEG Technical Session, Keynote Addresses.

12:15 p.m.—Joint AAPG-SEPM-SEG Luncheon, Civic Auditorium. Speaker: William C. Arntz, Federal Energy Administration.

2:00 p.m.—AAPG-SEPM-SEG Technical Programs.

5:00 p.m.—Annual Business Meeting, Civic Auditorium.

7:30 p.m.—SEPM Dinner Meeting, Hill House (note change in location from previous announcements). Speaker: Gus Armstrong, USGS.

## Friday, April 22—

7:00 a.m.—Delegates' Breakfast.

8:00 a.m.—Registration, Civic Auditorium.

9:00 a.m.—AAPG-SEPM-SEG Technical Programs.

12:15 p.m.—Alumni Luncheons.

2:00 p.m.—AAPG-SEPM-SEG Technical Programs.

7:30 p.m.—Dinner-dance, Stockdale Country Club.

## Saturday, April 23—

8:00 a.m.-4:00 p.m.—Field Trip to the West Side of the San Joaquin Valley to observe outcrops of Potter and Stevens sands. Although field trip attendance is by pre-registration, there *may* be some available spaces after April 1. If you did not pre-register and wish to attend, contact Phil Ryall, 323-7759, as soon as possible.

7:30 p.m.—Buck Owens Rodeo, Kern County Fairgrounds.

Ladies events are as follows:

## Thursday, April 21—

9:30 a.m.—Tour of Vacation Homes at Stallion Springs, and lunch.

## Friday, April 22—

9:00 a.m.—Tennis Tournament, Rio Bravo Tennis Ranch. Lady tennis players are needed, be sure to sign up.

10:00 a.m.—Pioneer Village Tour and box lunch.

BOB HOFFMAN

## SPECIAL CONVENTION PUBLICATION SALE

These publications are available at a reduced rate at the 1977 Pacific Section AAPG Convention in Bakersfield, April 20-23:

### Guidebooks

GB 12—Geol. of the North Channel Islands and Southern Calif. Borderlands (AAPG-SEPM) 1969 .....\$5.00

GB 17—Guidebook to the Southeastern Rim of the Los Angeles Basin (AAPG-SEPM-SEG) 1970 .....\$1.00

GB 25—West Side Central San Joaquin Valley Field Trip Guidebook (AAPG-SEPM-SEG) 1972 .....\$5.00

GB 28—A Profile of Southern Calif. Geology & Seismicity of L.A. Basin (SEG) 1973 .....\$1.00

GB 29—Metropolitan Oilfields & Their Environmental Impact (AAPG-SEPM-SEG) 1973 .....\$1.00

GB 30—Imperial Valley Regional Geology and Geothermal Exploration (SEG-AAPG-SEPM) 1973 \$1.00

GB 31—Santa Barbara Channel Region Revisited (AAPG-SEPM-SEG) 1973 .....\$1.00

GB 32—Miocene Sedimentary Environment and Biofacies, Southeastern L.A. Bay (SEPM) 1973 .....\$1.00

GB 33—Sedimentary Facies Changes in Tertiary Rocks, California Transverse & Southern Coast Ranges (SEPM) 1973 ..\$1.00

GB 37—Geology of Peninsular California (AAPG-SEPM) 1974 ....\$4.00

### Selected Cross Sections

(\$1.00 each or as marked)

(not all will be on sale)

CS 8—San Joaquin Valley—So. (1 sheet) 1957. From T31S/R20E to T28S/R30E

CS 9—San Joaquin Valley—Central (1 sheet) 1957. From T21S/R12E to T15S/R23E

CS 10N—San Joaquin Valley—Central (1 sheet) 1958. From T4N/R3E to T18S/R20E

CS 10S—San Joaquin Valley—Central (1 sheet). From T18S/R20E to T10N/R19W

CS 11—San Joaquin Valley—West Side (1 sheet) 1959. From T19S/R15E to T8N/R23W

CS 12—Santa Maria Basin (1 sheet) 1959. From T11N/R34W to T5N/R34W

CS 13—Sacramento Valley—No.—So. (1 sheet) 1960. From T29N/R2W to T3N/R2E

CS 14—L.A. Basin (1 sheet) 1962. From T15S/R15W to T8S/R10W. SBB&M

CS 15—Sacramento Valley—Central (1 sheet) 1967. From T4N/R1W thru T4N/R7E

CS 16—Sacramento Valley—No. San Joaquin (1 sheet) 1967. From T3S/R10E to T8N/R1E

CS 17—San Joaquin Valley Kingsburg—Tejon Hills (1 sheet) 1969. From T16S/R26E to T11N/R18W

### San Andreas Fault—Cross Sections 1964 (\$1.00 each)

SA 1—Pacific Ocean to Gulf of Farallones

SA 2—Gulf/Farallones to Bielwaski Mtn.

SA 3—Bielwaski Mt. to Hollister

SA 4—Hollister to Bitterwater Valley

SA 5—Bitterwater Valley to Parkfield

SA 6—Parkfield to Soda Lake

SA 7—Soda Lake to Santiago Creek

SA 8—Santiago Creek to Sawmill Mtn.

SA 9—Sawmill Mtn. to Valyermo

SA 10—Valyermo to Mexican Border

SA 11—San Andreas Composite Cross Sec. Summary of SA 1-SA 10 on 1 sec.

### Miscellaneous Papers

MP 8—A Symposium of Papers Presented at the 40th Pacific Sec. AAPG Convention (AAPG) 1965 .....\$1.00

MP 13—Program Reprints, 1972 Annual Meeting AAPG, SEPM, SEG, Pac. Sec. ....\$2.00

MP 17—Geologic Literature on the San Joaquin Valley (NCGS-AAPG) 1973 .....\$2.00

MP 19—Preprints San Diego Meeting (AAPG-SEPM) 1974 .....\$1.00

## AAPG PACIFIC SECTION SPRING PICNIC

June 3, 1977

The Spring Picnic will be held at Ferndale Ranch (immediately north of Santa Paula) from 2:00 p.m. till ?. A Golf Tournament begins with the first tee-off at 10:00 a.m. at Elkins Ranch, Santa Paula. A Field Trip in near vicinity.

# GEO-POLITICS or ENERGY POLITICS— YOUR FUTURE

## LUNCH & SYMPOSIUM

Co-sponsored by the California Section, Association of Professional Geological Scientists and Concerned About Petroleum (New Women Organization), Wednesday, April 20, 1977 at Bakersfield Civic Auditorium, 100 Aruxton Avenue, Bakersfield, California. Phone (805) 327-7553.

Theme of the symposium: "Political Facts of Life as Regards to Energy."

Luncheon: 12:00 noon, Mars Room. Speaker: Lloyd Unsell; subject, Relations of Independent Petroleum Producers and Government Agencies.

Symposium and Panel Discussion: 1:45 p.m. to 5:00 p.m., Venus Room. Moderator, Mr. Art Spaulding.

All Earth Scientists are welcome to attend the Luncheon and/or the afternoon session. Pacific Section AAPG, SEG, and SEPM members and others coming to Bakersfield for the Pacific Section Convention are urged to arrive a few hours early and participate in this Symposium.

## MARTIN VAN COUVERING...

(from page 1)

other members of this study group. At the conclusion of each meeting he would stand at the exit and personally thank each individual for attending, in many instances, accompanied by friendly words of encouragement. He was especially attentive to the younger geologists.

In 1947, he was elected president of the Pacific Section. During his term of office, he initiated the Geological Forum and a monthly newsletter, the PACIFIC PETROLEUM GEOLOGIST, which is now in its 30th year of publication. Because of his outstanding service to the Pacific Section, the Section Executive Committee in 1972 established the Martin Van Couvering Award which enables deserving students to attend AAPG field trips and conferences.

He was the author of numerous technical articles, mostly for magazines devoted to the oil industry and petroleum geology. He served as guest lecturer at various universities including Stanford, California Institute of Technology, New Mexico Institute of Mining and Technology, California State University at Long Beach, and University of Southern California. In his thirst to broaden his geological knowledge he attended nearly every field trip put on by AAPG affiliated societies throughout the country, and it is generally agreed that he attended more field trips than any other member of AAPG. He wrote many lucid and authoritative guidebook reviews.

In 1963, at the age of 75, he became a charter member and was the unanimous choice for the first president of the American Institute of Professional Geologists, an organization designed to represent all geologists and whose goals, as stated in its constitution, are to strengthen the profession of geology, evaluate the professional qualifications of geologists, enhance the status of the geological profession in the eyes of the public and to protect the public welfare and the profession from non-professional practices of geology.

For two years as President, Martin devoted practically all his time to attaining these goals. Through dedicated hard work, almost constant travel, and with financial support out of his own pocket, he was primarily responsible for putting this new organization on a firm footing and causing its voice to be heard in legislative halls throughout the country. It was his idea that this new organization would supplement AAPG, not be in

conflict with it, and his efforts were directed towards that end.

He continued to devote considerable time to AIPG and its purpose to serving on other committees of throughout the rest of his life in add-scientific, educational and civic organizations, quite often as chairman.

In 1967 he was made an Honorary member of AAPG for his distinguished contributions to our profession.

His qualifications for the Human Needs Award include his unselfish and tireless efforts to upgrade the profession of geology for the benefit of both geologists and the public and to help his fellow geologists become better old finders. He has found oil and gas fields in his own right. The warmth of his personality, his leadership and his ability to work with people have enabled him to be of beneficial service to many both within and outside our profession. He should long be remembered, especially by those who were stimulated and encouraged by his friendship.

JOHN E. KILKENNY

## SIDNEY POWERS MEMORIAL AWARD

A prominent Houston oilman, Michel T. Halbouty, has been named the 1977 recipient of the Sidney Powers Memorial Award by the American Association of Petroleum Geologists. He will be cited at the Association's annual meeting this June in Washington, D.C.

The Powers Medal is the highest award made by the AAPG, the geological community's largest professional association, and is given in recognition of distinguished and outstanding contributions to petroleum geology. Halbouty, a past president of the AAPG, has a long record of service to the industry and to the profession, and has previously been named as an Honorary Member of AAPG and as a recipient of their Human Needs Medal, giving him the organization's top three honors.

## PACIFIC SECTION SEPM

The Pacific Section SEPM announces its 1977 Executive Committee:

President — D. F. Oltz, Texaco Inc., Los Angeles, California.

Vice President — K. A. McDougall, USGS, Menlo Park, California.

Secretary — J. M. Gibson, Texaco Inc., Los Angeles, California.

Treasurer — W. Reay, Union Oil Co., Santa Fe Springs, California.

### PACIFIC SECTION — AMERICAN ASSOCIATION PETROLEUM GEOLOGISTS

#### Executive Committee

President .....	EUGENE F. REID (805) 324-6771
President Elect .....	VERN C. JONES (916) 482-4950
Vice-President .....	JOHN N. TRUEX (213) 436-9211
Secretary .....	DON WM. REYNOLDS (805) 324-6571
Treasurer .....	HOWARD E. STARK (805) 642-9509
Past President .....	WESLEY G. BRUER (805) 324-4600
Editor .....	JOHN W. LIDSTROM (213) 385-0515

#### Newsletter Staff

Editor .....	JOHN W. LIDSTROM
Assistant Editor .....	RON J. SCHMELA
Membership Secretary .....	BETTY BEAN

#### Associate Editors

Alaska .....	DICK E. ATCHISON (907) 272-5417
Coast .....	TOM HOPPS (805) 648-2514
Los Angeles .....	TOM REDIN (213) 945-1221
Northern California .....	OTTMAR F. KOTICK (415) 948-0950
Northwest .....	
Sacramento .....	TERRY PLUMB (916) 482-8490
San Joaquin .....	JEFF SMITH (805) 324-6571
Recommended Reading ....	LUCY E. BIRDSALL (213) 688-2850

NEWSLETTER of the Pacific Section—American Association Petroleum Geologists is published monthly by the Pacific Section.

Material for publication and requests for previous copies should be addressed to JOHN W. LIDSTROM, TEXACO INC., 3350 WILSHIRE BLVD., L.A., CALIF. 90010.

Material received by the 10th of each month will be included in the following issue.

CHANGE OF ADDRESS, subscription, and membership inquiries should be directed to: MEMBERSHIP SECRETARY, PACIFIC SECTION AAPG, P.O. BOX 1072, BAKERSFIELD, CALIFORNIA 93302.

## AAPG-SEPM ANNUAL CONVENTION

June 12-16 • Washington, D.C.  
Technical Program

**FUELING THE FUTURE** sets the theme for the 1977 technical sessions scheduled through Thursday noon. The AAPG Research Symposium and Short Course both have the title "Petroleum Potential of Slopes, Rises, and Plateaus." The SEPM Research Symposium "Predictive Sedimentological Models for Earth Resources" will be supplemented by Colloquia. AAPG standing committees will sponsor sessions on energy minerals, estimation of reserves, enhanced recovery, computer applications, and outstanding papers of the fall 1976 SEG meetings. Special sessions will focus on legislative and regulatory agency views for energy.

### Field Trips—Pre-Meeting

Thin-skinned deformation and possible hydrocarbon traps in the southern Valley and Ridge and Cumberland Plateau Provinces.

Proposed Pennsylvanian System Stratotype, Virginia and West Virginia.

Cambrian platform and offplatform limestones.

### Post Meeting

The character of structural deformation of paleozoic clastics in the Central Appalachians and its bearing on oil and gas accumulation in the Valley and Ridge Province.

Paleo-environmental analysis of the shelf and deltaic deposits in the coastal plain of New Jersey.

A geological and environmental guide to Northern Fairfax County, Virginia.

## BRANNER CLUB MEETING

The Branner Club will meet at 6:00 p.m. May 4th at Caltech's Athenaeum. Dinner at 7:00-8:00 p.m. Cost \$8.00 per person. Dr. Richter will speak on Rumanian Earthquakes. Please call Lucy Birdsall for reservations and additional information (213) 688-2850.

## NEW AAPG PUBLICATIONS

**Variety is the Spice of Life** — and these three new items are examples of some of the varied subjects covered by AAPG publications.

**Seismic Section No. 1** (Tamaulipas Shelf to Campeche Scarp, Gulf of

Mexico), by Joel S. Watkins et al., is a new concept in AAPG publications. The 21 inch by 16½ foot seismic section of 24-fold seismic reflection data covers an actual track of 650 km (horizontal scale approx. 4 km = 1 in.; vertical scale approx. 1¼ in. per second of travel time). The seismic section, which is a black-line ozalid reproduction, comes rolled in a tube. Six pages of explanatory text, including a table showing Western Gulf of Mexico seismic units, are included as a part of the section. It sells for \$6.00 (domestic) and \$7.00 (foreign).

**Foreign Reprint Series No. 1** (Geology and Oil Fields of Libya, Algeria, and Tunisia), compiled by Robert E. King, is a collection of 10 papers reprinted from the AAPG *Bulletin and Memoirs* 14 and 16. It consists of 222 pages with a paper cover. Nonmember price is \$8.00 (AAPG and SEPM member price is \$7.00).

**Studies in Geology No. 3** (Migration of Uranium and Thorium—Exploration Significance), by John W. Gabelman, is an information-packed volume on possible ways that uranium might be concentrated into economic deposits. Underemphasized processes of uranium mineralization are accentuated by the author, who has a background of both industry and government experience (20 years with AEC). A historical analysis of uranium exploration, the geology and technology of such exploration, and an assessment of industry expectations are included. The volume, which consists of 168 pages including 50 figures and seven tables, has an extensive bibliography and a keyword index. This paper-covered volume sells for \$15.00 to nonmembers (\$12.00 to AAPG and SEPM members).

## NATIONAL CONFERENCE ON EARTHQUAKE ENGINEERING

The next National Conference on Earthquake Engineering sponsored by the Earthquake Engineering Research Institute will be held on Wednesday, Thursday and Friday, August 22-24, 1979. The conference will be held at Stanford University; Professor Hareesh C. Shah and Professor James M. Gere of Stanford's Department of Civil Engineering will serve as co-chairmen for the meeting.

Further information is available from Professor Shah at Stanford or from Susan Newman, Earthquake Engineering Research Institute, 424 40th Street, Oakland, CA 94609.

## COSUNA

The rocks of the earth's crust which contain the mineral and petroleum resources vital to the well-being of society will be the subject of a major, six-year scientific study to be conducted by geologic organizations in Canada, Mexico, and the U.S. The project, "Correlation of Stratigraphic Units of North America" (COSUNA), will involve the volunteer efforts of hundreds of geologists throughout the continent. The American Association of Petroleum Geologists, headquartered in Tulsa, Oklahoma, will operate the project under a contract from the United States Geological Survey, Department of the Interior.

Cooperating organizations include the American Association of Stratigraphic Palynologists, the American Commission on Stratigraphic Nomenclature, the Association of American State Geologists, the Geological Association of Canada, the Geological Society of America, the Instituto de Geologia UNAM (Mexico), the JOIDES Planning Committee, and the Society of Economic Paleontologists and Mineralogists. Additional organizations are expected to become involved as the project progresses.

The goal of the project is to define and tie together the thousands of rock units present beneath North America and its continental margins, which, although beneath the sea, are becoming increasingly important as a source of petroleum and minerals. Vast amounts of geologic data recovered as the result of drilling for oil and gas will be incorporated for the first time in continent-wide correlation charts.

Dr. Orlo E. Childs, University Professor at Texas Tech University, has accepted the position of Project Director. Dr. Childs holds degrees from the University of Utah and the University of Michigan. He has worked for both industry and government and served from 1963 to 1970 as President of the Colorado School of Mines. He is a past-President of AAPG.

## REMOTE SENSING SYMPOSIUM

The view from outer space, and its applications to energy and mineral resource exploration here on earth will be the subject of the third William T. Pecora Memorial Symposium on remote sensing, to be held in Sioux Falls, South Dakota, on October 30-November 2, 1977. It will be sponsored by the American Association of Petroleum Geologists. Michel T. Hal-

(continued on page 5)

## REMOTE SENSING SYMPOSIUM...

(from page 4)

bouty, Houston, Texas, will serve as general chairman and Jon W. Davidson, with Superior Oil in Houston, will be technical program chairman. The United States Geological Survey, which the late Dr. Pecora served as director for many years, will provide support for the meeting from its EROS Data Center, located near Sioux Falls.

The U.S. currently has two land satellites (Landsats) photographing the earth and transmitting pictures to the Sioux Falls center. At the meeting, scientists from the United States and other countries will present papers illustrating how Landsat data can be utilized in the exploration for petroleum and mineral resources. Between 700 and 1,000 are expected to be in attendance.

## PACIFIC SECTION AAPG EXECUTIVE COMMITTEE MEETING

January 21, 1977

### Committee Reports

#### Publications

1. President Reid reported on his investigation in trying to consolidate publications and get firm inventory control. Several possibilities, best of which would be Oil Company storage with Oil Company Employee taking orders and mailing from same location. Will continue to study.

2. Carl Evans reported that, at least for the present, he has things under control. He is back from vacation and is mailing out orders on timely basis. Mrs. Evans was paid \$1,320 during 1975 for doing the mailing.

3. Estimate of storage space needed is 150 sq. ft. Texaco, Aminoil, and Lloyds now storing. Also a mailing supply is maintained in the Evans' garage.

4. Need "fire sale" to dispose of "old" publications. Evans will conduct this at the 1977 convention.

a) *Motion*—Stark, Second—Davis: That C. Evans conduct a discount sale at the 1977 convention. The prices to be determined by Evans. Passed.

5. Bob Yeats, Ohio University, has requested aid in publishing graduate work on Ventura basin. Discussed. Died for lack of motion.

6. Question was asked about Kleinpell reprint of 'Miocene Stratigraphy.' Refer to Note 3 of Graves' report with September *Minutes*. Report is running late. Will PS, AAPG gain from Sale? Treasurer will investigate. Mention was again made about publishing Dibble's work. Opinion was that PS, AAPG did not have the money. Dropped for lack of motion.

#### Membership

1. Reynolds submitted report from Betty Bean. PS, AAPG now has 1195 active members.

2. Davis mentioned large number of members assigned to Los Angeles Basin Society. Many of these members live too far away to attend meetings. Do they belong in "L.A." or should they be PS, AAPG at large? No action.

#### Directory

1. Davis report moving along with bids on "filler" of \$2,457 for 1,000 copies. Will have a three ring cover. Estimates on this ran to \$3.50 per copy. Davis checking.

2. Reynolds reported that John Randall has mailed out requests for donations (each donation to receive space in the directory).

3. Davis needs membership lists from the SEG and SEPM.

4. *Motion*—Davis, Second—Gibson: That the Directory be financed through the convention fund. Passed.

#### Nominating

1. Members are: Ted Bear, J. Curran, D. Pfeiffer, Art Spaulding and W. Bruer.

2. Nominees are:

#### President Elect

Robert N. Hacker

Ralph P. Cahill

#### Vice President

Thomas L. Wright

John K. Cassell

#### Secretary

John A. Minch

Stanley E. Karp

#### Treasurer

Nancy B. Olson

James H. Dorman

3. *Motion*—Stark, Second—Truex: That the nominees be accepted and approved. Passed.

#### Newsletter

1. President Reid requested that an edition of the NEWSLETTER be delivered between April 1st and 10th.

#### Spring Picnic

1. Los Angeles Geological Society will handle. Bruce Barron will appoint Chairman.

#### Convention

1. Eschner reported everything moving along. A registration of 500 persons should put convention over financial hump.

2. Convention Committee is handling Leverson Award.

3. President Reid will handle Van Couvering Awards and Life Membership awards.

#### Old Business

*Motion*—Curran, Second—Truex: That the PS, AAPG move the checking account to Bank of A. Levy. Passed.

*Motion*—Stark, Second—Stephens:

That the PS, AAPG rebate \$2.00 per local member to each Cooperating Society. Date of this rebate to be January 1 each year. Passed.

*Motion*—Truex, Second—Barron: That the PS, AAPG pay the Distinguished Lecture fee for one lecture per Cooperating Society per year. The Cooperating Society to submit bill for same. Passed.

#### New Business

President Reid announced receipt of letter from Western Oil and Gas Association Executive Director Art Spaulding. Mr. Spaulding asked for PS, AAPG members who knew and would contact state and local elected and appointed officials in behalf of the Energy Business. If you are interested (and you should be), please contact Mr. Spaulding or President Reid.

#### Coast Geological Society

1. Will hold continuing Educating Course, September 30 and October 1, 1977 with field trip.

#### Northern California Geological Society

1. Stephens reports meeting January 26th at Leopard Cafe.

#### San Joaquin Geological Society

1. Young reports much concern over \$25,000 drill or workover bond.

a. Have Committee working to amend.

2. This is an example of a Bill that passed without the general knowledge of oil people.

3. *Motion*—Stark, Second—Hanson: That President Reid write letters to appropriate people in Legislature requesting reasonable amendment of Bonding Law. Passed.

Jim Weddle has requested PS, AAPG set up endowment fund for Core Repository at Cal State Bakersfield

1. General feeling was—no money. Idea died for lack of motion.

## Please Note:

Irving T. Schwade, vice president, Texfel Petroleum Corporation, is moving to Abilene, Texas, effective November 15, 1976, to open a new Texfel exploration office there at 527 Petroleum Building, Abilene, Texas 79602. His home address will be 4001 Congress Court, Abilene, Texas 79603.

Schwade will continue to direct all company exploration activities from his Abilene headquarters, and Texfel will continue to maintain its corporate headquarters at its Los Angeles address, Kirkeby Center, 10889 Wilshire Blvd., Los Angeles, CA 90024.

## PACIFIC SECTION AAPG EXECUTIVE COMMITTEE MEETING March 4, 1977 • Bakersfield, Calif.

1) Mrs. Evans was paid \$1,320 during 1976 for mailing, bookkeeping and other duties supportive of the Publications Chairman.

2) The Van Couvering Memorial Fund (\$35.00) will be used as a part of the Van Couvering Award at the 1977 convention.

3-a) Prices have been set and plans are made for big discount sale at the 1977 convention. Reid, Bruer, and Evans—Price Committee.

b) Membership—1) 1216 members; 2) President Reid thanked Chairman Susan Cage for letter mail-out last fall which started the members rolling in.

c) Directory—Should be ready to check April 1st. Will have soft cover because of cost. Reynolds reported for John Randall that \$2,653 worth of donations for space have been received. (Over \$3,400 by March 16th). Cost to members will probably be set at \$3.00. Will print 1,000 copies.

d-1) Nominees were listed in NEWSLETTER. 2) Secretary will mail ballot with voting deadline of April 15, 1977.

e) Bruce Barron reported that the Spring Picnic will be held June 30th at Ferndale Ranch; golf at Elkins Ranch. Short field trip being planned.

f) Convention—1) Karpe reported plans for eight awards — two from Bakersfield College, two from Cal State Bakersfield, two from Taft Jr. College, two from Fresno State—\$50 plus free registration at convention—must check in to receive. Stark will prepare checks when he gets names. 2) Reid handling life memberships. Several names mentioned—will check out. 3) Eschner reported: a) Pre-registration packet mailed. b) Everything going smoothly.

4) Old Business—a) Bonding law—1) President Reid reported two bills in California Legislature, AB 566 and SB 293, which will give some relief from excessive bonding requirements for drilling and well work. Must have relief because small operator generated business now coming to halt.

5) New Business—a) Bruce Barron reported 90 persons attended L.A. Basin's Colloquium. b) L.A. Basin's fourth Thursday luncheon at Taix Restaurant. 1) During April, July, and September a Bar-B-Que at Rubel Park will take the place of the regular luncheon. c) Sacramento Petroleum Association has moved monthly meeting to "Steak & Ale."

Respectfully submitted,  
DON WM. REYNOLDS  
Secretary, PSAAPG

✱ ✱ ✱

### Pacific Section AAPG Membership Totals Through March 1, 1977

#### Northern California Geological Society

Paid members ..... 205  
Honorary ..... 6

TOTAL 211

#### Sacramento Petroleum Association

TOTAL 37

#### San Joaquin Geological Society

Paid members ..... 248  
Honorary ..... 2

TOTAL 250

#### Coast Geological Society

Paid members ..... 95  
Honorary ..... 1

TOTAL 96

#### Los Angeles Geological Society

Paid members ..... 374  
Honorary ..... 8

TOTAL 382

#### Alaska Geological Society

TOTAL 30

#### Other

TOTAL 210

TOTAL MEMBERSHIP ..... 1216  
(including honorary)

### The Dinosaur

by BERT LESTON TAYLOR

*Behold the mighty dinosaur,  
Famous in prehistoric lore,  
Not only for his power and strength  
But for his intellectual length.  
You will observe by these remains  
The creature had two sets of brains—  
One in his head (the usual place),  
The other at his spinal base.  
Thus he could reason "A priori"  
As well as "A posteriori."  
No problem bothered him a bit;  
He made both head and tail of it.  
So wise was he, so wise and solemn,  
Each thought filled just a spinal column.  
If one brain found the pressure strong,  
It passed a few ideas along.  
If something slipped his forward mind,  
'Twas rescued by the one behind,  
And if in error he was caught,  
He had a saving afterthought.  
As he thought twice before he spoke,  
He had no judgement to revoke.  
Thus he could think without con-  
gestion  
Upon both sides of every question.  
Oh, gaze, upon this model beast,  
Defunct ten million years at least.*

—First published in the Chicago Tribune, 1895

## Los Angeles

This is my final article for the L.A. Basin Geological Society. We, the Union Oil Santa Fe Springs Exploration District, are moving to Ventura during the next couple of months. I am nominating Jamie Roig, who is remaining at Santa Fe Springs, to be my replacement. This assumes the current LABS administration can persuade him to do it. I hope the Coast Geological Society will have room for all of us.

Jim "Chinky" Lowe and Rolf Woods of Union Oil Santa Fe Springs were recently transferred to Lafayette, Louisiana. They thought house prices in Lafayette would be lower than Ventura, but alas, they were mistaken.

The LABS will have a Bar-B-Que on Thursday, April 28, 1977 at Rubel Park in Brea. The happy hour will start at 5:00 p.m. Steak dinner at 6:30 p.m. Speaker, 7:30 p.m. The speaker will be Al Kerr of Orange Coast College who will talk on "The Geology Exposed Adjacent to the Mediterranean Sea in Southern Europe."

To find Rubel Park, take No. 57 Orange Freeway to Imperial offramp, East on Imperial to Valencia, North on Valencia past Carbon Canyon turn-off to Union Sterns lease road, West on lease road to park.

TOM REDDIN

### RECOMMENDED READING

CALIFORNIA GEOLOGY, vol. 29, no. 8, August 1976

Palmdale Bulge, by Charles R. Real and John H. Bennett

Rock types of the Franciscan Formation, Coyote Hills, Alameda County, California, by Kenneth G. Snet-singer

Trench Shoring, by Mary C. Woods  
Geologic features of Death Valley  
Scale models of mining equipment  
Structural features of the Salton Trough as seen from Skylab, by Anthony O. Clarke

### CALIFORNIA DIVISION OF MINES AND GEOLOGY

Special Publication 47: Active fault mapping and evaluation program. Ten year program to implement Alquist-Priolo Special Studies Zones Act ..... \$2.00

Map Sheet: Offshore surficial geology of California, by Edward F. Welday and John W. Williams ..... \$7.50

Special Publication 48: Second report on the strong-motion instrumentation program, 1976, by Thomas E. Gay, Jr. .... \$2.00

(continued on page 7)

## RECOMMENDED READING ...

(from page 6)

Geologic Data Map No. 1: Fault map of California, with locations of volcanoes, thermal springs, and thermal wells, compiled by Charles W. Jennings. 1975 (scale 1:750,000) ..\$5.00

GEOLOGICAL SOCIETY OF AMERICA BULLETIN, vol. 87, no. 5, June 1976

Stike-slip faulting terminates the Basins and Range province in Oregon, by Robert D. Lawrence

Effect of vegetation on lateral migration of anastomosed channels of a glacier meltwater river, by Derald G. Smith

Diachronous deposition of ice-rafted debris in sub-Antarctic deep-sea sediments, by John Keany, Michael Ledbetter, Norman Watkins, and Ter-Chien Huang

Basal metalliferous sediments from the Eastern Pacific, by D. S. Cronan

Granitic rocks of the southern Coast Plutonic Complex and northern Cascades of British Columbia, by T. A. Richards and K. C. McTaggart  
GEOLOGICAL SOCIETY OF AMERICA BULLETIN, vol. 87, July 1976 (no. 6)

Revision of Upper Ordovician, Silurian, and Lower Devonian stratigraphy, southwestern Great Basin, by Richard H. Miller

Relative motion of South America with respect to North America and Caribbean tectonics, by John W. Ladd

Gravity investigation in the southeastern Mojave Desert, California, by Yair Rotstein, Jim Combs, and Shawn Biehler

"Pseudokarst" and "pseudokarst terrains": Problems of terminology, by Erwin G. Otvos, Jr.

Deposits formed by subglacial precipitation of  $\text{CaCO}_3$ , by B. Hallet  
GEOLOGY, vol. 4, no. 5, May 1976

Methane production and consumption in anoxic marine sediments, by R. O. Barnes and E. D. Goldberg

Significance of coexisting lawsonite, prehnite, and aragonite in the San Juan Islands, Washington, by William E. Glassley, John T. Whetten, Darrel S. Cowan and Joseph A. Vance

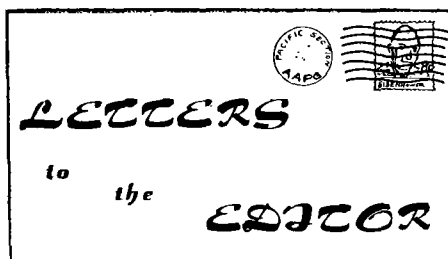
Selection of sample intervals in deep-sea sedimentary cores, by Michael T. Ledbetter, and B. B. Ellwood

Geologic significance of coiling direction in the planktonic foraminifera *Pulleniatina*, by Tsunemasa Saito

ENGINEERING MINING JOURNAL, vol. 177, no. 7, July 1976

Remote sensing continues to open new horizons for ore seekers, by Thomas E. Wayland

LUCY E. BIRDSALL



I would like to take this opportunity to thank the Executive Committee for allowing me to be selected as one of the recipients of the Martin Van Couvering Award for 1976.

I thoroughly enjoyed attending the convention. I found the lectures most informative and interesting. The luncheon and dinner were very enjoyable, and I was proud to be introduced by Dr. A. Eugene Fritsche as one of the recipients of the Award. At the Joint Luncheon I had the honor of meeting Martin Van Couvering.

The field trip was of particular interest to me as I have studied some of the regional geologic aspects of the Sacramento Valley in a recent graduate seminar on petroleum geology. On this field trip I was able to view the formations first hand as in the past I had only seen them on electric logs.

With the cash portion of the Award I was able to purchase several publications which have proved valuable in my Master's Thesis studies.

THOMAS F. BLAKE  
California State University,  
Northridge

\*\*\*

In 1972, my students and I at Ohio University began a major project of sub-surface and surface structural mapping in the Ventura basin. The first thesis by Neal Canter became available in 1975, and a second thesis by E. W. Ricketts and Keith Whaley became available last June. Between now and early 1978, another six theses will be completed. More projects of this type are planned for the future.

My problem, which I'd like to share with you, is making this information available to the general public, particularly to geologists working in Southern California. Each of these theses consists of a relatively brief text and from 20 to 30 plates, surface geologic maps, structure contour maps, E-log cross sections, and various derivative maps and stratigraphic sections. I have received complaints that these theses are virtually impossible to obtain from the Ohio University library, and when they are received, they cannot be copied easily (forgetting the copyright law for a moment) because the plates are so

large and the geologic maps are on a dot-screen topographic base.

What to do? I have the film positives of all thesis illustrations, so it is possible to reproduce these theses from the originals. These are several possibilities:

1. Reproduce theses from the original on a demand basis. Because this is labor-intensive, our cost estimate per thesis is about \$50-60. There is the disadvantage of delay, arranging for someone to do the work of reproducing the thesis.

2. Have the Ohio University Research Institute or Ohio University Press reproduce a fixed number of theses and sell these until the supply is gone. This cuts the cost somewhat, but neither of these organizations wants to be stuck with a large inventory of unsold theses. We are willing to consider this, however, particularly if a sum of money could be advanced to Ohio University to pay for initial reproduction.

3. Have the Pacific Section of AAPG or the Coast Geological Society sponsor the reproduction and sale of the theses and handle the inventory of unsold theses just as they now handle guidebooks and special publications. I like this plan best of all because it gets me out of the publications business.

A copy of this letter goes to the President of Pacific Section and of Coast Geological Society for consideration. By reproducing theses in about the same number as guidebooks, the cost per thesis could be reduced to perhaps \$20. Considerations in the unit cost include: (1) how many theses must be sold for the sponsoring society to recover its financial investment in reproduction, and (2) how many additional theses should be made to handle future demand.

The production schedule, subject areas, and authors are as follows:

mid-1975 Canter, Neal—Big Mountain area.

mid-1976 Ricketts, E.W., and Whaley, Keith — Oak Ridge-Santa Susana fault intersection, Wiley Canyon to South Tapo Canyon.

mid-1977 Rieser, Robert — Oak Ridge fault from Bridge Pool to Wiley Canyon.

Schleuter, James — San Cayetano fault from Upper Ojai Valley to Timber Canyon.

late-1977 Lant, Kevin — Aliso Canyon oil field and vicinity.

Shields, Kermit — Western margin of San Fernando Valley.

(continued on page 8)

# LETTERS TO THE EDITOR...

(from page 7)

Butler, Mark — Santa Susana fault from South Tapo Canyon to Aliso Canyon.

early-1978 Cemen, Ibrahim — San Cayetano fault from Sespe Creek to Piro Creek.

I would appreciate from your membership any suggestions on how best to make the data available. I would also appreciate letters expressing interest in purchasing copies of any or all of these thesis, and whether the labor-intensive \$50 price tag is prohibitive.

ROBERT S. YEATS  
Professor of Geology  
Ohio University  
Athens, Ohio 45701

P.S. We are not a profit-making organization and what's more, we intended it that way!

\*\*\*

I attended the February Short Course in Bakersfield on "Late Mesozoic and Cenozoic Sedimentation and Tectonics in California." I thoroughly enjoyed the two days of mind-boggling edification. During the closing talk I wrote the following commentary on the program and presentation. Perhaps it may be of interest to the readers.

Most California Petroleum geologists have been known classically as "one township geologists" — compare in the Rockies, Mid-Continent, etc.,

where every geologist is working on entire basin and possibly a half or a dozen basins with some understanding of the regional factors in the process. Our non-California colleagues have been the leaders in analyzing, synthesizing, and communicating the nature of regional and local tectonics and sedimentation to their non-petroleum colleagues.

In California the reverse has become true simply because of the vacuum that has existed in syntheses of statewide geology since the classic works of Reed and Hollister.

Thus, in the vacuum, our colleagues in the universities and governmental agencies have filled the gap themselves as best they could. Considering their lack of access to and/or familiarity with the tremendous quantity of subsurface and other data used routinely by their petroleum geologist colleagues, they have done admirably well.

But two dimensions are not enough. We, as petroleum geologists, have not fulfilled an important facet of our professional responsibilities in California. We have *not done* enough, or at least communicated enough, of our detailed and regional subsurface geology to the rest of the geological community.

Hopefully meetings like this Short Course will increase the two-way flow of information. My personal hope is that, within the next several years, increasing dialogue and cooperation between the petroleum geologists and the remainder of the geological community may result in the following

statewide studies leading to publication:

1) Isopachous, facies, and paleogeologic maps of all the major stratigraphic sequences and important subdivisions.

2) Structural contour maps on the main sequence surfaces, particularly introducing fault interpretations based on subsurface data.

3) Syntheses of sedimentation, tectonics, and paleogeography based on the factual data gathered above.

Such analyses and communications utilizing *all* the knowledge, intelligence, and imagination of all working geologists should lead to mutual benefits:

1) More knowledge of the controls for oil and gas accumulation with resulting new discoveries.

2) A much better understanding of statewide geology that can be utilized by those concerned with ground water, minerals, engineering geology, and the other expanding applications of geologic science to the well being of the citizenry.

Beyond that commentary I was disappointed that the Short Course was all one way. I would hope that in the future smaller groups of a similar diversity of backgrounds could study parts of all these problems with solid two-way dialogue.

Regardless of all previous comments, those two days were as geologically inspiring as any two days I've spent in my career.

Sincerely,

EDWARD A. GRIBI, JR.

## NEWSLETTER

Pacific Section A.A.P.G.

P.O. Box 1072

Bakersfield, California 93302



# PACIFIC PETROLEUM GEOLOGIST NEWSLETTER

*of the Pacific Section*  
*American Association of Petroleum Geologists*

VOLUME 31

MAY-SEPTEMBER, 1977

NUMBER 5-9

## 53rd ANNUAL MEETING PACIFIC SECTION AAPG, SEPM, SEG

A historic first meeting in a historic city: the Pacific Section convention will be held April 21-24, 1987 in Sacramento, where a great deal of California history occurred and more is being made each day. General Chairman James Weddle, immediately aided by General Vice Chairman Dalton Pollard and Finance Chairman Don Pinnell, have chosen the luxurious new Red Lion Inn for the 53rd gathering of West Coast petroleum geologists, paleontologists, and geophysicists.

John Evers is Operating Coordinator, overseeing printing, publicity, and advertising. Monte Doris is Convention Site Coordinator, looking after exhibits, housing, entertainment, the joint luncheon, and information. The technical program is headed by Burton Amundson, who will arrange for speakers and monitor the various programs and the field trip.

Eighteen people began meeting once a month a full year prior to the 1978 convention, and display an enthusiasm and sense of organization that make it a pleasure to tell members of the convention to come. The convention committee members are proud that Sacramentan Vern Jones is now the president of AAPG's Pacific Section, and are out to make him proud of them.

Put it on your calendar now: plan to be three miles east of Discovery Park and two miles northeast of Sutter's Fort on April 21-24 of next year.

BOB PASCHALL

## GENERAL CALL FOR PAPERS, 1978 AAPG, PACIFIC SECTION FIELD TRIP GUIDEBOOK

Lowell E. Garrison has been appointed chairman for the 1978 Pacific Section AAPG Field Trip. The field trip will concentrate on the history, recent developments and future potential of the most important geothermal power generating field in the world, at the GEYSERS, near Healdsburg, California. Those interested in contributing to the Guidebook and/or leadership in the field trip, please contact:

Lowell E. Garrison  
4252 Mason Lane  
Sacramento, California 95821  
Telephone: (916) 487-9177

## **Coast**

The Coast Geological Society began its 30th year by electing Nick Nicholers president, C. K. Ham vice president, Keith Whaley secretary, and Joan Sutton treasurer. Good luck to these in the coming year.

The society is presenting an AAPG Continuing Education short course this fall, September 30-October 1, 1977. Entitled "Deep Water Sand Reservoirs - Modern Concepts - Ancient Case Histories," the course will examine deep water sedimentation agents capable of forming reservoir strata with discussion on ocean currents. Emphasis will be placed on turbidity currents with some discussion of contour currents. The speaker will be Oscar Weser of Scripps Institute of Oceanography. The Friday lecture will be followed by a Saturday field trip in Hopper Canyon near Piru to observe deep water sand bodies.

Cost will be \$18 for the lecture (\$12 for students) and \$12 for the field trip (\$8 for students). For details and registration, contact Keith Whaley or Dick Dyhrman, 805-659-7600.

KEITH R. WHALEY  
Secretary - CGS

## GENERAL CALL FOR PAPERS, 1978 AAPG, SEG and SEPM CONVENTION

Burt Amundson has been appointed Program Chairman for the Pacific Section Convention to be held at the Red Lion Inn in Sacramento, April 25-29, 1978. The theme for 1978 is: ENERGY EXPLORATION and POLITICS. The following are some suggested titles and subject areas for papers:

California, Oregon and Washington, offshore and onshore  
Sacramento and San Joaquin Valleys, recent developments  
Plate Tectonics, as it relates to oil and gas occurrences  
Mesozoic Paleogeography of the Pacific Coast (SEPM Research Symposium)  
Economics of energy exploration and development  
Geothermal  
Energy resources, in addition to oil and gas  
The influence and/or impact of government and politics on the energy industry.

The title and general contents of papers for the AAPG sessions should be mailed to:

Bert Amundson  
1165 Volz Drive  
Sacramento, CA 95822  
Telephone: (916) 447-7998

Proposed papers descriptions for the SEPM sessions should be sent to:

Dr. Charles Janke  
Department of Geology  
at Sacramento  
California State University  
6000 "J" Street  
Sacramento, CA 95819  
Telephone: (916) 489-3312

Papers for the SEG section should be mailed to:

Jerrie Gasch  
Gasch and Associates  
1832 Tribute Road  
Sacramento, CA 95815  
Telephone: (916) 927-4767

BURT AMUNDSON

## Los Angeles

### 1977 B-B-Q

The 1977 B-B-Q was held on June 3rd at the Ferndale Ranch, just past the "good old country air" exposure. As usual, weather was excellent with 350 plus attending. Serving began at 5:00 p.m. and the bash lasted, of course, until the fluids were consumed, about 10:30 p.m.

Preceding the "eats," 76 duffers trod the greens, attempting to outdo Dick Ballantyne, who just barely won the "most gross" award. Tom Woodward became custodian of the Frank Yule trophy, given yearly to the top golfer, or golferess(?). Spense Fine and Bill Edmond shared second places. Thanks to Doug Traxler, who set up and ran the tourney, it was a great day!!!

The field trip along outcrops of the San Cayetano fault trace started at 9:30 a.m. and ended at the Ranch about 3:30-4:00 p.m. One hundred and thirty-three interested geologists tramped along on this trip, ably led by John Truex, Dick Hester and Dick Berger.

Guide books of this trip, with much original material, are still available from Carl Evans, c/o Texaco Inc., 3350 Wilshire Blvd., L.A. 90005.

Thanks are sent to Ralph Cahill and Tom Hopps who helped in setting up the B-B-Q, and those dedicated fellows who always help with the cooking — John Cass and Lee Weismeyer.

Sorry the last few in the serving line were short on salads and beans. This would not occur if all of us would make reservations ahead of time, whether you are sure of attending or not.

All in all, it was a great day and there should be many more Fridays like it!!!

✽ ✽ ✽

The Los Angeles Basin Geological Society will host their annual winter "Fire and Ice" dinner-dance on Saturday, October 29, 1977, at the Naval Support Activity, Long Beach, California. A cocktail hour hosted by area service companies will begin at 6:30 p.m. followed by dinner and dancing. The cost is only \$22.00 per couple. For reservations please phone or write Corla Davis, Texaco Inc., 3350 Wilshire Blvd., Los Angeles, CA 90010, (213) 385-0515, by Tuesday, September 20, 1977.

NANCY B. OLSON

## AAPG-SEPM NATIONAL CONVENTION

We are currently soliciting papers for the AAPG-SEPM National Convention to be held April 9-12, 1978, in Oklahoma City, Oklahoma. I would request that you encourage the membership in your Society to respond to this call by submitting a paper or sponsoring a non-member's paper to the 1978 Convention.

"Generate in '78" has been chosen as the theme for the Convention. The theme will be broadly construed to include new ways of generating the recovery of the energy reserves so desperately needed by our industry and the nation. Special sessions are being planned for the following subjects: Computer Applications, Energy Minerals, Petroleum Geology, Mid Continent Geology, Foreign Geology, Geology of the Atlantic Coast Offshore and Geochemistry. Papers on other subjects of broad general interest to Association members also will be accepted.

Twenty minutes will be allotted to each paper with no break between papers. Speakers are encouraged to speak for 15 minutes and save five minutes for questions. Projection equipment will consist of two 35mm projectors and two large screens in each meeting room. Instruction for papers and review of slides will be sent to each author upon acceptance of the abstract. Submission of slide-line copy and type size at drafting scale prior to constructing slides will be encouraged in an effort to improve projection quality.

Abstracts of papers, a double-spaced typed original and one copy not to exceed 250 words with the author's address at the bottom of the page, are to be submitted by October 1, 1977, to AAPG Program Chairman, THOMAS N. CAPUCILLE, 1500 City National Bank Tower, Oklahoma City, Oklahoma 73102.

Acceptance of papers will be judged primarily from the abstract. Papers given previously at regional, sectional, or national meetings will not be accepted.

Because of the acceptance of poster sessions at recent conventions, this method of presentation also will be used in the "78" Convention. Talks or material that would lend itself to this visual method should be directed to us as such.

Thank you for your help in obtaining the material for what we hope will be a useful and enlightening Convention in "78."

THOMAS N. CAPUCILLE  
1978 AAPG Technical Program Chmn.

## EXPLORATIONISTS' RESPONSE SHOWS NEED FOR CONTINUED OIL, GAS PRICE INCENTIVES

Because of increases in new oil and natural gas prices, new field wildcats have gone up 31 percent in the last five years, demonstrating that exploration incentives yield positive results, says Robey H. Clark, National AAPG secretary.

Because of these price incentives the number of new field wildcats drilled in 1976 totaled 5,840, compared to 1971's 20 year low of 4,463. Clark adds, "The historically high success rate of 17 percent in 1976 reflects the fact that some 'discoveries' are being completed which would have been abandoned as non-commercial five years ago."

He also points out that oil discoveries have gone up 54 percent since the pre-OPEC embargo year, 1973. Altogether, the number of new field wildcats completed as producing wells in 1976 was 127 percent above the 1971 level. "Obviously we need to ensure that this success rate stays at this high level."

But Clark warns that legislation now pending in both Houses of Congress to further regulate oil and gas development in the outer continental shelf "is redundant and proposes procedures that build in delays of several years, offers new disincentives to the industry and ties the hands of the Secretary of the Interior.

"This legislation should not be passed."

He says that the Outer Continental Shelf Leasing Act of 1953, and its subsequent amendments, provide the Secretary of the Interior "with all the authority and procedures needed to manage the resources of the OCS efficiently and effectively. The Act has stood the test of time and application."

Tampering with present law, says Clark, may prevent entirely "any oil and gas exploration in frontier areas, since provisions of the currently proposed bills "make orderly financial, logistical and operational planning a practical impossibility. This, in turn, will bring about increased reliance on imported oil and lessen the nation's ability to provide for the national defense, and could lead to the withering of the superb body of technological excellence developed in the U.S. over the last 40 years."

What the country needs now, Clark thinks, "is to encourage responsible, full-speed development of our energy resources. The next few years will be crucial to the energy future of our

(continued on page 3)

## EXPLORATIONISTS' RESPONSE ...

(from page 2)

country. A national energy policy will simply not work without continued increases in new discoveries of both oil and gas."

The AAPG secretary says further that such new petroleum and gas finds cannot come about unless we "improve the price and tax structures relative to drilling and minimize the regulatory burden under which exploration is carried out.

"The statistics show what can be done under favorable conditions," he adds. "They show that incentives tied to risk will be taken up and rewarded.

"Our Association, whose members have been instrumental for locating the bulk of all the oil and gas found in the free world, urge the Administration and Congress to include in the nation's energy policy positive encouragements for more exploration and drilling."

## PACIFIC SECTION AAPG EXECUTIVE COMMITTEE MEETING

July 28, 1977

Culver City, California

### I. Treasurer's Report

A. Lump-sum distribution of financial support to local societies (\$2 per PSAAPG member as of 1/1/78) approved to principle. Action deferred pending 1977-78 budget forecast.

### II. Committee Reports

#### A. Membership

1. 1221 members last year, expect at least 1200 this year — 646 already paid.

2. To boost renewal rate, will circulate list of lapsed members to ExComm, for follow-up.

#### B. Legislation

1. Chairman Paschall, retiring after long service, points out continuing need to monitor legislation, especially amendments to existing laws.

2. Paid legislative representative neither permitted (by PSAAPG tax classification) nor very effective—recommend that the new Legislative Chairman be a Sacramento-area member who would establish and maintain informal liaison with legislative monitors in Div. Mines/Geology, Div. Oil/Gas, and with the Board of Registration-Geol/Geoph., WOGA and CIPA. Responsibilities of the Legislative Chairman would include:

a. Inform PS ExComm, and affiliated California local societies, of legislative matters which might require immediate response;

b. Summarize current legislative activities and send to Editor for publication in NEWSLETTER.

### C. Publications

1. Kleinpell volume being edited (Ann Donnelly, others) — no income in 1977-78.

2. Publications Committee should advise on all publications supported by PS: process, binding and bids; number printed; sale price, etc. SEPM has run profiles on its publications and can estimate sales fairly well. Committee to study further.

3. Remaining 1977 Membership Directories will be sold, beginning Sept. 1, 1977, for \$2.50 by mail, \$2.00 over-the-counter (by local societies, etc.).

### D. Membership Directory

1. Discussion of ways to increase distribution of future directories. Advertising income might nearly cover printing costs but not mailing and handling. Suggested alternatives include: a free copy to each convention registrant; bulk shipment to local societies for free distribution at meetings; increase dues and send copy to each member. Will continue to study.

### E. Field Trips

1. No current chairman. PS does not directly sponsor field trips — handled by SEPM in Fall, Convention and Picnic committees in Spring. Chairman's only job might be to advise on schedule and provide publicity to PS members (PS members do not receive mail-out on SEPM trip — announced in NEWSLETTER).

2. 1977 SEPM field trip to Salinian block Oct. 14-15; begins in San Luis Obispo.

### F. Spring Picnic

1. No longer sponsored by PS but alternates between Coast and L.A. Basin sponsorship. Coast's turn is next.

2. Discussion of coordination problems when L.A. Basin Society sponsors picnic outside its area (e.g., Ferndale Ranch); possible alternatives discussed.

### G. Convention

1. 1978, Sacramento: Chairman Weddle reports that all committee positions filled.

a. Will have Dinner-Dance Thursday night, with time for SEPM announcements.

b. Field trip to Geysers, through Capay Valley Cretaceous, led by Lowell Garrison.

c. National AAPG will schedule Continuing Education program on Wednesday.

d. APGS Geopolitical Seminar will be part of regular program.

e. Golf and tennis planned.

f. Will probably arrange post-convention trips to Lake Tahoe, Reno.

2. 1979 Convention will be in Los Angeles area. Disneyland Hotel recommended and generally approved. Need to reserve space soon.

3. Suggestion (Pegors) that future PS conventions be scheduled in Fall to avoid present conflicts with SPE, OTC, National AAPG.

4. Wright reported that 1981 National AAPG convention would probably not be held in San Francisco due to lack of facilities for concurrent sessions. Wright and Alexander will investigate. National is considering Las Vegas as alternate 1981 site; discussion was unanimously negative toward PS providing assistance, personnel for convention at that location. If 1981 National not in San Francisco, may hold 1980 PS convention there.

### H. Public Affairs

1. Chairman Off reported that National AAPG has just distributed sets of energy crisis slides to all local societies (plus two sets to PS) for use by "Speakers Bureaus" and loan to individuals giving talks to civic organizations, schools, etc. Points out need for much greater effort in communicating with public.

### III. Old Business

A. Need better coordination with National AAPG. Send ExComm minutes to Ted Bear, AAPG Advisory Council member for Pacific Section, National AAPG committee chairman should coordinate with Section and local societies to avoid duplication of effort and appointments (e.g., Public Information).

B. Registration — Paschall notes problems of being grouped with trade boards (contractors, barbers) under Dept. of Consumer Affairs, recommends developing legislation to place Board of Geol/Geophys. under Dept. of Natural Resources, as Forestry Board is now.

C. Alexander volunteered to work with local societies toward a coordination of AAPG Distinguished Lecturer tours in PS. Results, and budget projection, will be considered at next ExComm meeting to decide whether PS will sponsor one (or more) Distinguished Lecturers for each local society.

### IV. New Business

#### A. Pacific Section SEPM

1. A symposium on Geochemistry in Oil Exploration is being considered for 1978.

(continued on page 4)

**EXECUTIVE COMMITTEE ...**

(from page 3)

**B. Coast Geological Society**

1. Holding a Continuing Education program on Deepwater Sandstone Reservoirs September 30/October 1. Lecture (Friday) by Oscar Weser, Hopper Canyon field trip Saturday.

**C. Northern California Geological Society**

1. Asks for advice, from other local societies, on improving its Public Information program and organizing its own Continuing Education courses.

**D. San Joaquin Geological Society**

1. Is sponsoring two scholarships at Cal State Bakersfield.

E. President Jones reported that Al Almgren had requested permission to use information from PS publications in a book. Jones has authority to grant permission. Question on PS copyright practices.

F. Tentative schedule of PS Ex-Comm meeting: October (27th?) — Los Angeles; January — Sacramento; late March — Sacramento; Business Meeting at Convention; June/July.

T. L. WRIGHT

Acting Secretary, PS-AAPG

**U.S. ENERGY BALANCE SHEET:****PRODUCTION DECLINING**

Domestic oil production is declining by 10% a year, despite near-capacity production of existing reserves, according to the American Association of Petroleum Geologists (AAPG). As a result, AAPG adds, the U.S. now depends on foreign sources to meet 40% of its oil requirements.

Today we produce 9.7 million barrels of oil per day ( $M^2B/D$ ), they say, about one million barrels below 1970, our peak production year. Since 1970, our imports have increased 105%.

(Natural gas production, which peaked in 1973, has gone down to the current 20 trillion cubic feet per year).

AAPG gives these figures as the estimated U.S. energy consumption for last year (in  $M^2B/D$  or equivalent):

Domestic Oil .....	9.7 $M^2B/D$	26%
Imported Oil .....	7.6	21%
Domestic Natural Gas	9.7	26%
Imported Natural Gas	0.5	1%
Coal .....	6.6	18%
Nuclear .....	1.1	3%
All Other .....	1.8	5%
1976 TOTAL .....	37.0	100%

# Alaska

The Alaska Geological Society has received numerous requests to encourage its members to contribute geologic ideas to our profession. In contemplating different means to accomplish this, we are investigating the feasibility of publishing an annual bulletin in which geological notes and comments would be contributed.

We believe there are many geologists who have ideas they would like to see written and published, but do not have the time nor the means to prepare their geologic ideas for publication in the AAPG or GSA bulletins. As you may know, such formal publications require extensive preparations and approvals encompassing months of work as well as volumes of correspondence.

Our intent is to provide a less formal method of publishing short "tid bits" of geology and thus make them available to members of the society and others of the scientific community who are interested in our profession.

Some of our potential authors may want to present some of their geologic ideas at a mini-meeting prior to publishing them in the proposed bulletin. This could be scheduled for those who wished to present their ideas verbally, but of course would not be a prerequisite for publication.

The first bulletin of the AGS would be published in the Spring of 1978.

The following is a listing of new officers and directors of the Alaska Geological Society for the year 1977-1978:

**OFFICERS**

President ..... Keith W. Calderwood  
 President Elect ..... Arlen Ehm  
 Vice President ..... Roger C. Herrera  
 Secretary ..... John K. Lawrence  
 Treasurer ..... John A. Levorsen

**BOARD OF DIRECTORS**

Alexander Sisson (past President)  
 Ryamond J. Holasek  
 Robert H. McCullin  
 Thomas H. Neel  
 Ross Schaff  
 Ruth A. M. Schmidt

**AAPG FORMS ENERGY MINERALS DIVISION TO ADVANCE ALTERNATE ENERGY SOURCES**

The AAPG House of Delegates voted June 12 to establish an Energy Minerals Division as a new technical branch of the society. The action, taken as part of AAPG's annual meet-

ing in Washington, June 12-16, comes in recognition of both the emerging energy potential of earth materials other than conventional oil and gas resources, and the growing involvement of petroleum geologists in exploring and developing these materials.

Lloyd A. Carlson, president of the new division, says the House of Delegates' vote "culminates the efforts of many AAPG members over the past few years to make the association more active in the various energy minerals fields." He notes that early active supporters of the Energy Minerals Division include K. H. Crandall, Michel T. Halbouty, Hollis Dole, and T. C. Hiestand.

"The Division," he says, "will emphasize programs and publications dealing with coal, geothermal energy, nuclear minerals, oil shale and tar sands in order to publicize and inform both AAPG members and the public of developments in these resources which our country needs in order to supplement its oil and gas."

Carlson says that in recent years many geologists have become actively involved with these resources, since oil and gas exploration and development techniques can easily be adapted to working with other energy minerals. "It's been a natural move for myself as well as for my colleagues, especially since some of these minerals, like uranium and coal, are found in sedimentary deposits, the sources of our oil and gas," he explains. He added that his division will work through the AAPG Bulletin to publish outstanding papers on these alternate energy sources.

Other officers of the new division, which already has 600 members, are: Warren Westphal, vice president, and Ruffin Rackley, secretary-treasurer.

**NATIONAL AAPG**

Robert D. Gunn, independent oil operator from Wichita Falls, Texas, has been elected president-elect of the American Association of Petroleum Geologists for the 1977-78 term. Gunn will assume the presidency of the AAPG in July of 1978.

This year's president-elect, Edd R. Turner, with Getty Oil in Houston, became president July 1, for the 1977-78 term.

A native of St. Paul, Minn., Gunn established himself as an independent at Wichita Falls in 1958 after five years as a consulting geologist. He began his career in 1949 as a geologist with Texaco, and is a graduate of the

(continued on page 5)

## GEO DATA

GeoData Corporation, a Tulsa-based petroleum exploration service company, has augmented its Denver Division personnel by adding Robert M. Wittrock, Rocky Mountain Representative, and Mrs. Leola Parish as Office Manager. In addition, Roger W. Nixon has been added to the Midland, Texas Division as a GeoData Midland Representative. Nixon will assist James V. Humhrey in GeoData's marketing effort in the Permian Basin and the Texas Panhandle.

Michel A. Laviolette has been transferred to Bakersfield, California, where he has opened an office to facilitate GeoData's marketing and services for the California Division of GeoData.

GeoData Corporation specializes in the acquisition and marketing of exploration data and conducting coordinated geological-geophysical studies for its clients. GeoData and its affiliated companies now have offices in Tulsa, Denver, Calgary, Midland, Houston, Port Hueneme and Bakersfield (California), Corpus Christi, Roswell (New Mexico), and London, England.

### PACIFIC SECTION — AMERICAN ASSOCIATION PETROLEUM GEOLOGISTS Executive Committee

President .....	VERN C. JONES (916) 482-4950
President Elect .....	ROBERT N. HACKER (213) 884-4071
Vice President .....	THOMAS L. WRIGHT (415) 894-0725
Secretary .....	STANLEY E. KARP (805) 395-4438
Treasurer .....	NANCY B. OLSON (213) 385-0515
Past President .....	EUGENE F. REID (805) 324-6771
Editor .....	JOHN W. LIDSTROM (213) 385-0515

#### Newsletter Staff

Editor .....	JOHN W. LIDSTROM
Assistant Editor .....	RON J. SCHMELA
Membership Secretary .....	BETTY BEAN

#### Associate Editors

Alaska .....	DICK E. ATCHISON (907) 272-5417
Coast .....	KEITH WHALEY (805) 659-7600
Los Angeles .....	TOM REDIN (213) 945-1221
Northern California .....	OTTMAR F. KOTICK (415) 948-0950
Sacramento .....	TERRY PLUMB (916) 482-8490
San Joaquin .....	JEFF SMITH (805) 324-6571
Recommended Reading ....	LUCY E. BIRDSALL (213) 688-2850

NEWSLETTER of the Pacific Section—American Association Petroleum Geologists is published monthly by the Pacific Section.

Material for publication and requests for previous copies should be addressed to JOHN W. LIDSTROM, TEXACO INC., 3350 WILSHIRE BLVD., L.A., CALIF. 90010.

Material received by the 10th of each month will be included in the following issue.

CHANGE OF ADDRESS, subscription, and membership inquiries should be directed to: MEMBERSHIP SECRETARY, PACIFIC SECTION AAPG, P.O. BOX 1072, BAKERSFIELD, CALIFORNIA 93302.

## NATIONAL AAPG ...

(from page 4)

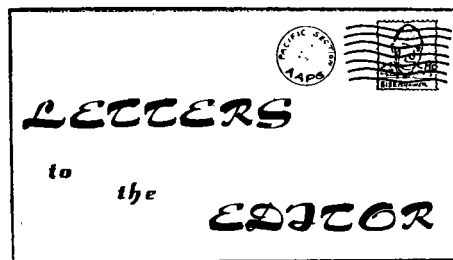
University of Minnesota. He also studied petroleum engineering at the University of Tulsa.

Other candidates elected by the membership include Edwin P. Kerr of Oklahoma City, vice president; John J. Amoruso of Houston, secretary; and John Shelton of Stillwater, Oklahoma, editor. George S. Galbraith, independent geologist from Abilene, Texas, will begin his second year as the Association's treasurer, a two-year term of office.

Kerr, a native of Marietta, Oklahoma, and a graduate of the University of Oklahoma, has been an independent exploration geologist since 1973. He began his career with Phillips Petroleum in Bartlesville, Oklahoma, and later worked for Bay Petroleum in New Mexico, for Northern Natural Gas in Midland, Texas and Omaha, Nebraska, and for Mobil Oil in Oklahoma City.

Amoruso, an independent operator and consulting geologist since 1969, previously worked for Pan American Oil (now Amoco). He is a native of Portsmouth, New Hampshire, and is a graduate of Tufts University and of the University of Michigan.

Shelton will begin his second two-year term as AAPG's editor. A member of the faculty at Oklahoma State since 1963, he worked for 10 years for Shell Oil after completing his Ph.D. at the University of Illinois. A native of China Spring, Texas, he also holds a degree from Baylor University and is a director of ERICO, Inc., a geological consulting firm headquartered in England.



A directory of registered geologists, registered geophysicists, and engineering geologists has just been published by the Geologist and Geophysicist Board. A free copy may be obtained by writing to the board office at 1020 N Street, Room 421, Sacramento, CA 95814.

JOHN E. WOLFE  
Executive Secretary

Bruce Barron has joined the staff of Petroleum Testing Service, Inc., 8100 Secura Way, Santa Fe Springs, Cal-

ifornia 90670 (213-698-0081). Barron is the current President of the Los Angeles Basin Geological Society.

\*\*\*

R. B. (Bob) Maynard, former Californian, has elected early retirement from Sun Oil Co. after 29 years of exploration. He will consult from his home in Dallas.

\*\*\*

Buttes Resources Company, a subsidiary of Buttes Gas and Oil Company, has opened its California Division office at 3100 - 19th Street, Suite 15, Bakersfield, California, telephone 327-9891.

The office is staffed by Guy L. Burge, Jr., Division Geologist; James F. Peters, Senior Geologist; and Adrienne Haley, Senior Secretary.

## NEW SPEAKER'S KIT FROM NATIONAL AAPG

For several years now the National AAPG has had a Public Information Committee. The purpose of this committee is to "inform the public of the prospects for increased domestic oil and gas production and the attendant benefits and costs."

To this end, the National has periodically distributed to all associated geological groups: 1) Up to date lists of various available films on geology and the oil industry. 2) A press release handbook and other miscellaneous data. And 3) Background papers issued by the AAPG Committee on Public Affairs.

The latest tool which is now available is a speakers' kit. This is in the form of 28 colored 35mm slides with appropriate remarks for each combined with 50 or so additional pages of data. Those of you who heard Ed Turner speak in Bakersfield at our last Pacific Section Convention saw some of these slides. They cover various aspects of our nation's energy problems, especially those dealing with supply and demand over the next 25 years. The speakers' kit is not a canned speech. Those using it will have to assemble their own presentation according to the audience or their own ideas.

One copy of the kit has been sent to the president of each local affiliated geological society. I have a copy and additional ones are obtainable from the National (probably at a nominal cost).

TED OFF, Pacific Section  
Public Information Committee

**RECOMMENDED READING****U.S. GEOLOGICAL SURVEY**

- P 640-G: Eocene corals from Eua, Tonga, by J. W. Wells, with a statement on: Eocene fish fauna of Eua, Tonga, based on additional otoliths, by J. E. Fitch .....95¢
- P 655-M: Effects of phreatophyte removal on water quality in the Gila River phreatophyte project area, Graham County, Arizona, by R. L. Laney, with a section on: Statistical analysis, by H. W. Hjalmarson \$3.00
- P 942: Flood-prone areas and land-use planning — selected examples from the San Francisco Bay region, California, by A. O. Waananen, J. T. Limerinos, and W. J. Kockelman, W. E. Spangle and M. LL. Blair, William Spangle & Associates ..\$2.20
- P 1005: Lithium resources and requirements by the year 2000, edited by J. D. Vine (reprint) .....\$3.25
- P 1014: Late Quaternary depositional history, Holocene sea-level changes, and vertical crustal movement, southern San Francisco Bay, California, by B. F. Atwater, C. W. Hedel and E. J. Helley .....\$1.85
- B-1433: Eocene rocks in northeast Washington — radiometric ages and correlation, by R. G. Pearson and J. D. Obradovich .....\$2.25
- Circular 749-B: Earthquakes in the United States, April-June 1975, by W. J. Person, R. B. Simon and C. W. Stover .....Free
- Circular 751-A: The United States Geological Survey in Alaska: Organization and status of program in 1977, K. Blean, editor .....Free
- Circular 753: Short papers of the U.S. Geological Survey uranium-thorium symposium, 1977, edited by J. A. Campbell .....Free
- MAPS:**
- I-949: Geologic map of the Fairbanks D1 SW quadrangle, Alaska, by T. L. Pewe, J. W. Bell, J. R. Williams & R. A. Paige .....\$1.50
- I-953: Geologic map of the eastern San Francisco volcanic field, Arizona, by R. B. Moore and E. W. Wolfe .....\$1.50
- MF-341: Preliminary geologic map of Jordan Meadow quadrangle, Nevada-Oregon, by R. C. Greene (reprint) .....75¢
- MF-415: Metallic mineral resources map of the Petersburg quadrangle, Alaska, compiled by E. H. Cobb (reprint) .....75¢
- MF-611: Preliminary geologic map of the southwest quadrant of Alaska, compiled by H. M. Beikman (1974) (reprint) .....\$1.50
- GEOLOGICAL SOCIETY OF AMERICA BULLETIN**, vol. 88, no. 7, July 1977
- Timber Mountain — Oasis Valley caldera complex of southern Nevada by Robert L. Christiansen, Peter W. Lipman, W. J. Carr, F. M. Byers, Jr., Paul P. Orkild, and K. A. Sargent
- GEOLOGICAL SOCIETY OF AMERICA BULLETIN**, vol. 88, no. 8, August 1977
- Movement of cobbles in a gravel-bed stream during a flood season, by Paul Ray Butler

Stream network volume: An index of channel morphometry, by K. J. Gregory

Textural characteristics of drift from some representative Cordilleran glacier, by Hugh H. Mills

K-Ar and fission-track dating of ash partings in coal beds from the Kenai Peninsula, Alaska: A revised age for the Homeric Stage — Clamgulchian stage boundary, by Don M. Triplehorn, Donald L. Turner, and Charles W. Naeser

Sedimentation and climatic patterns in the Santa Barbara Basin during the 19th and 20th centuries, by Andrew Soutar and Peter A. Crill

**GEOLOGY**, vol. 5, no. 7, July 1977

Upper mantle origin of Sierra Nevada uplift, by S. Thomas Crought, and George A. Thompson

Ice gouge recurrence and rates of sediment reworking, Beaufort Sea, Alaska, by Erk Reimnitz, P. W. Barnes, L. J. Toimil, and John Melchior

## **Pacific Section**

### **New Officers for 1977-78**

<i>President</i> .....	Vern C. Jones
	Exploration Logging
<i>President Elect</i> .....	Robert N. Hacker
	Consulting Petroleum Geologist
<i>Vice President</i> .....	Thomas L. Wright
	Chevron Overseas Petroleum, Inc.
<i>Secretary</i> .....	Stanley E. Karp
	Bakersfield College
<i>Treasurer</i> .....	Nancy B. Olson
	Texaco Inc.

**NEWSLETTER****Pacific Section A.A.P.G.**

P.O. Box 1072

Bakersfield, California 93302



# PACIFIC PETROLEUM GEOLOGIST NEWSLETTER

of the Pacific Section

American Association of Petroleum Geologists

VOLUME 31

OCTOBER/NOVEMBER/DECEMBER, 1977

NUMBER 10/11/12

## Coast

The Coast Geological Society's annual barbecue picnic was held September 10 at the ever-popular Lagomarsino Ranch in Ojai. All who attended agreed our "chef extraordinaire," Tom Hopps, put on a one-man show. He is a person of many talents!

Champions of the various sporting events were as follows. Horseshoes — Ralph Cahill (stakes 35 feet apart; next year, who knows — keeps getting stronger every year); ping pong — Don Padick; swimming endurance record — Pete Hall (10 laps); pool shark — Dick Berger (ran out of fish); shuffle board — Dick Dyhrman (animal shots). Anyone wishing to challenge these champions will have to wait until next year.

The AAPG Short Course "Deep Water Oil Sand Reservoirs — Modern Concepts — Ancient Case Histories" was presented on September 1 by Oscar Weser of Scripps Institute. There were 149 people in attendance for the lecture, and most came away feeling more knowledgeable about turbidites. The field trip on October 1 took 127 people into the wilds of Hopper Canyon to see the real world they'd heard about the day before. Except for having to abandon a bus in the canyon, the trip went smoothly and was enjoyed by all.

The society has an ample supply of syllabi and field trip guidebooks from the short course for sale. The Syllabi entitled "Deep Water Oil Sand Reservoirs" is \$7.00, and the field trip guide "Deep Water Oil Sand Reservoirs of the Monterey Formation" is \$3.00. Contact Dick Dyhrman, Union Oil Company, P.O. Box 6176, Ventura, CA 93003, for your very own copy.

The society's first monthly dinner meeting was held Tuesday, October 18, at the American Legion Hall in Ventura. Dr. Jean-Bernard Minster spoke on "Present-day Plate Motions — Worldwide Overview."

Sincerely yours,

KEITH R. WHALEY  
CGS Secretary

## BIG CONSUMER SAVINGS SEEN FROM GAS DECONTROL

Deregulation of new natural gas, a new study claims, would mean a net saving of \$123.3 billion to American consumers over the next 13 years — not the heavy consumer cost attributed by the Carter administration.

The savings would derive from the additional gas supplies resulting from deregulation. They would save consumers the necessity of turning to higher-priced alternate fuels.

These benefits to consumers were shown in a special study for the Natural Gas Supply Committee made by Dr. Edward W. Erickson, professor of economics and business at North Carolina State University.

Dr. Erickson placed the cost of alternate fuels — on a BTU-equivalent basis — needed to replace lower supplies occurring under continued price controls at \$271 billion in the next 13 years. He estimated the cost of deregulation of new gas at \$147.7 billion in the same period. This leaves the net difference of \$123.3 billion in savings.

### Replacement Cost Factor

The professor observed "the great weakness in the administration's cost-impact assumptions and other studies supporting them is that they all fail to calculate the replacement-cost factor.

### Study Lends Support

The Erickson analysis was reinforced by a separate study prepared by Foster Associates. That study stresses that administration spokesmen have largely ignored such deregulation benefits as higher volumes of new gas at prices below the cost of alternate energy supplies, reduced dependence on imports, savings in transportation and distribution costs resulting from availability of more gas, and reduced risk of economic dislocations which are associated with natural gas shortages.

## CALIFORNIA SECTION ASSOCIATION OF PROFESSIONAL GEOLOGICAL SCIENTISTS

All geologists who are considering joining the Association of Professional Scientists should note that the period of reciprocity between APGS and other geological societies ends on January 12, 1978. Prior to that date, full (active) AAPG members, certified AAPG-D.P.A. members, SE&G and AEG members can join APGS without the need for five sponsors. The scientific society becomes the sponsoring agent.

The APGS exists to serve all geological scientists and its role is to advance the professional and political status of the science of geology. Its tax situation is different from that of technical and scientific societies, so that it can be active in political affairs. The association maintains a legislative watch in Washington and also on the state and local level as money and membership permits. We were active in the enactment of the Geologists Registration Act in California and the admission of Geophysicists into the act. Since enactment, we have supported the Geology Board in its work and fought, but failed, to stop legislative replacement of professional members by public members, which has made it very difficult for the board to do its necessary work. We were instrumental in passage of legislation for public release of well data in D.O.G. files.

We need more membership in California so that we can have greater clout in Sacramento and do more to advance the science of geology in the public interest. Write today to Art Brunton, Executive Director APGS, P.O. Box 957, Golden, Colorado 80401, or contact me, Howard Anderson, president elect, or area representatives Ralph Cahill, Al Holck, John Sullivan, Bob Schneeflock, Cliff Grey, Claude Fiddler.

EDWARD A. HALL, *President*  
California Section APGS

## WHERE LIES AMERICA'S ENERGY FUTURE?

By JOHN D. MOODY

*Past President, American Association of Petroleum Geologists*

For the first time, this country has a good opportunity to develop a coherent, sensible, long-range energy policy. Whether or not we're doing so belatedly may not be entirely beside the point, but it's more important to understand the dynamics at work creating the need for such a national policy.

Basically, the need arises out of the interplay of three factors — utilization of natural resources, growth of population, and environmental degradation — which together determine a given quality of life. The more natural resources, or energy, we can make use of, the better our quality of life can become. If population increases but the other factors remain constant, life quality declines. Population increases also produce corresponding increases in environmental degradation. These kinds of tradeoffs are inevitable and have become very evident to everyone.

### Resources Limited

We are now reaching the physical limits of resource availability — of those finite sources, fossil fuels and uranium, on which we are so dependent — and this fact in turn exacerbates the problems created by the other factors in the interconnecting equation. On a world-wide scale, exponential population growth poses the somberest of considerations for maintaining, let alone improving, life quality.

In the United States, an abundance of cheap energy, which we have come to take for granted, has created our high-technology society and has enabled it to sustain decades of often great population growth while also substantially increasing our standard of living. But now our energy dilemma is real, will not go away, and will not be remedied by the quick technological fix we have frequently used in the past with success.

Our energy dilemma is particularly due to the fact that we have to rely on low entropy — or most available — sources of energy which are finite and

non-renewable. Seventy-five percent of that energy is derived from oil and natural gas, and it's difficult to foresee any great change in this figure for at least the next decade.

### U.S. Energy Gap

So the dilemma translates into an energy availability shortage which will be with us until we can develop and make economically feasible the high entropy, unlimited energy sources — geothermal hot rocks, heavy hydrogen, solar energy, and atmospheric electricity. Unfortunately, this is going to be a long process taking 25 years or more. We're going to have to cope by exploiting that portion of our low entropy energy endowment that is left to us — perhaps 35 percent of the world's discovered and undiscovered total, but less than one percent in oil, natural gas, and uranium.

We may have about 125-150 billion barrels of producible crude and 400-600 trillion cubic feet of gas left to find. About half of this total is believed to be beneath Atlantic, Gulf of Mexico, Gulf of California and Alaskan waters. The total may seem high, but it won't eliminate the need for imports; nor will it carry us through too many more winters like the last one.

We desperately need this oil and gas, but we've erected many regulatory and legislative barriers to frustrate our obtaining it. In addition, an arcane pricing and tax structure makes it economically impractical to do exploration or exploitive drilling in areas where there are known reserves. Meanwhile, the cost of exploration alone has risen dramatically and needed capital is lacking. For example, it now takes about 50 field wildcats to produce one find which will yield a million barrels of oil or its equivalent in natural gas.

### Some Policies "Disincentives"

Clearly, arbitrary disincentives, often accomplished by governmental fiat in the face of geologic reality, to the capital intensive job of exploration, do not lead to the results we all want. As one government official said recently, "We are going up the down escalator on energy matters in this country."

In this regard, while President Carter's energy plan contains many features which need to be implemented quickly, it conspicuously lacks drilling incentives. For instance, the proposed

defining new-oil prices to cover only those accumulations found two and one-half miles from producing wells ignores the fact that there is much wildcatting to be done within this contrived limit. Many wildcat prospects in onshore Louisiana, offshore Gulf of Mexico and in Texas fall in this category. Also, the old-oil price is being forced on some producers merely because new finds have occurred under a base lease on which there was prior production.

These aren't especially good ways to get us moving in the right direction again. No energy policy can be realistic without all-out encouragement given to exploration and drilling. We should reward risk rather than confront the risk-takers with red tape and sour financial fruit. We simply do not have an alternative.

## 53rd ANNUAL CONVENTION PACIFIC SECTION AAPG-SEPM-SEG

"Energy Exploration and Politics," a fitting topic in a fitting place, will be the theme of the Pacific Section's joint AAPG-SEPM-SEG meeting in Sacramento next April 26-29. General Chairman Jim Weddle and his staff intend to have key governmental officials as speakers and guests, and seek to turn possible confrontation into constructive dialogue.

The convention will be held in the new and now expanding capacious Red Lion Inn, where all the explorationists attending may stay if they desire. Roland Bain, in charge of continuing education, is arranging for seminars on structural geology and geophysics on Wednesday, April 26.

Lowell Garrison, field trip chairman, is planning a trip into the north-central Coast Ranges, an area of scenic delight in springtime. The trip will embrace the Tertiary and Cretaceous sequences in Capay Valley, a look at the Coast Range thrust fault, and a visit to Lake County's sector of active geothermal exploitation.

This combination of politics, science, scenery, and energy development promises to be unique in Recent Pacific Section convention history. Something is in the cards for geologists, paleontologists, and geophysicists both as exploration scientists and as human beings next April 26-29.

ROBERT H. PASCHALL  
Publicity Director  
460 Lovella Way  
Sacramento, CA 95819

JOHN D. MOODY, as president of AAPG, represents more than 18,000 earth scientists in the U.S. and 80 other countries. He has over 30 years' experience in the oil and gas discovery field and is recognized internationally as a foremost consulting geologist. In recent months he has been called to share his knowledge with the White House energy office, the Senate Energy Committee, the House of Representatives' Ways & Means Committee, and the Federal Energy Administration.

## SAN JOAQUIN GEOLOGICAL SOCIETY

Welcome Christmas Spirit! But, Christmas does also signal the year-end rush to spend those tax dollars, so it's hope I'm there honey time again.

Hey, anybody hear from our old friend, anti-government Joe? I heard a local member make this statement, "It has been confirmed that one of the last of the Societies' diehard individualists has thrown in the towel and is now feeding at the public trough." Joe is now working for the USGS. Joe Who? Anybody remember our friend, Joe Dunwoody?

We heard from Chuck Bufe, USGS Menlo Park, concerning "Earthquake Prediction" last month. I was GSA'ing in Seattle but Chuck expressed considerable seismological interest in the NorCal area. He said his equipment was ready and waiting—lo and behold—rumors have it they had a mini tremblor in the Geysers area last week, the first in many years. Hope Chuck was ready.

In January, our annual ladies' night will not only bring in the new year with lobster, filet, and champagne, but Bill Rintoul as speaker. In so many words, the talk will center around his popular new book, "Spud-ding In." Bill has chosen the title of discussion, "The Changing Scene." For those who don't know about Bill, first, you should have your knuckles whomped. Second, his knowledge of our oil patch and its colorful history is unparalleled. Third, for you whipper snappers like myself, your appreciation of our industry will be doubled after hearing some of the stories Bill can tell of the OLD DAYS. Get your reservations in early, Jerry needs to know!!!

Let's hear three cheers for the New Year!!! Hip, hip . . .

JEFF SMITH

## LETTER FROM SJGS SENT TO PRESIDENT CARTER

Dear Mr. President:

The San Joaquin Geological Society, consisting of some 200 members of the American Association of Petroleum Geologists, meeting in Bakersfield, California, has asked me to write to you concerning the recent removal by the Secretary of the Interior of Dr. Vincent E. McKelvey as Director of the United States Geological Survey.

We believe that removing a director for unspecified reasons is a very unfortunate intrusion of politics into a previously unbiased scientific institution for the first time in its 98 year

existence. The views expressed by Dr. McKelvey have not always been totally in accord with those of industry-oriented petroleum geologists, but they are the freely arrived at, knowledgeable opinions based on information provided by the USGS staff. This staff is the best informed, regarding the reserves of oil and gas and other minerals, in the United States government and we believe represents the closest approach to the truth available to you.

These scientific views will remain even after Dr. McKelvey leaves office and for the good of the country should be listened to by those controlling the government.

We respectfully request that you maintain the previously unblemished reputation of the USGS by appointing another career geologist motivated by concern for the truth rather than short term political expediency.

Respectfully yours,

HY SEIDEN, *President*  
*San Joaquin Geological Society*

## ANNOUNCING— Direct-Mail Sales of USGS Open-File Reports

by the  
U.S. Geological Survey  
Effective October 1, 1977

### Purpose of Program . . .

- To furnish microfiche or paper-duplicate copies of open-file reports from a single, centrally-located facility.
- To provide faster order-filling service to the public for copies of open-file reports.
- To increase the availability of earth-science information to the scientific community.

### Order USGS Open-File Reports from:

Open-File Services Section, Branch of Distribution, U.S. Geological Survey, Box 25425, Federal Center, Denver, CO 80225. (Telephone: 303-243-5888.)

Price information will be published in the monthly listing "New Publications of the Geological Survey."

This facility will stock open-file reports only. Please do not mix orders for open-file reports with orders for any other USGS products. Checks or money orders, in exact amount for open-file reports ordered, should be made payable to U.S. Geological Survey. Prepayment is required.

Order by series and number (such as Open-File Aepoort 77-123) and complete title.

Inquiries concerning this new program should be sent to the address given above.

## CALL FOR PAPERS

This is the second call for papers for the Pacific Section AAPG and SEG sessions of the 1978 Convention to be held April 26-29 at the Red Lion Inn in Sacramento. The region of primary interest for the convention will be Northern California, especially the Great Valley and Coast Ranges, Nevada, Oregon, Washington and Alaska. Some suggested subject matter for papers.

Regional geology of Northern California, Washington, Nevada and Oregon, including general papers on the relationship of plate tectonics to the development of the Great Basin, Great Valley and Coast Ranges of California. Plate tectonics interpretation of stratigraphy and energy source occurrences. Papers on stratigraphy and structure of the Great Basin, Great Valley and Coast Ranges of the traditional type (not necessarily plate tectonics related).

Offshore exploration and development—past, present and future prospects.

Specific papers on recently developed oil and gas fields.

Geothermal power development and exploration. Other energy sources.

Innovations in exploratory tools—new geophysical techniques, remote sensing, etc.

Government policies and their positive as well as negative influence on energy exploration and development.

The papers should be as provocative and stimulating as possible.

Preliminary abstracts of approximately 300 words or less should be submitted to the technical program coordinator no later than December 1st.

The program time available will not accommodate all prospective speakers, so authors of abstracts should observe the deadline for submittal and carefully consider the quality and suitability of their abstracts. Competition for the few time spots will probably be stiff. Authors will be notified early in January, 1978 as to the acceptance of their abstracts.

Abstracts for papers for the SEG and general AAPG sessions should be submitted to:

Burt Amundson  
Technical Program Coordinator  
1165 Volz Drive  
Sacramento, CA 95822  
Phone (916) 447-7998

## CONTRACT LET FOR EXPLORATORY DRILLING IN ALASKA'S NPRA

Husky Oil NPR Operations, Inc. will receive an additional **\$190 million** to continue exploratory drilling next fiscal year in the National Petroleum Reserve in Alaska, the U.S. Geological Survey of the Department of the Interior announced recently.

Under provisions of the Naval Petroleum Reserves Production Act of 1976, the jurisdiction of NPRA was transferred from the Department of the Navy to the Department of the Interior, effective June 1, 1977, and responsibilities for administration of the petroleum exploration program was delegated to the U.S. Geological Survey by the Secretary of the Interior. In 1975, the Office of Naval Petroleum and Oil Shale Reserves began an evaluation and assessment program to determine the petroleum potential of the Reserve. The contract with Husky provides for the third year of that planned five-year program.

A number of estimates of the oil and gas potential of the Reserve have been made in the past by government agencies and private industry. The most recent estimate — by the Federal Energy Administration — amounts to five billion barrels of oil and gas condensate, and 14.3 trillion cubic feet of gas. These estimates, however, are based on relatively limited information. A major purpose of the new NPRA program is to obtain sufficient data to make a more precise assessment of the oil and gas potential in the Reserve.

The Fiscal Year 1978 exploratory program within NPRA will include the drilling of six exploratory oil wells; three of them of medium depth (less than 12,000 feet) and three deep (greater than 12,000 feet) wells. Two of these wells will reach a depth of more than 19,500 feet, the deepest ever on the North Slope of Alaska.

Husky's work will be under the supervision of a group of USGS specialists, including geologists, geophysicists, and engineers of the Survey's Office of National Petroleum Reserves, with operational headquarters at Anchorage, Alaska. Named as chief supervisor and coordinator of the program is George Gryc (pronounced GRITCH), a specialist in Alaskan geology, and a career scientist with the USGS since 1943.

NPRA was created under an Executive Order signed by President Harding on February 27, 1923. Designated as the Naval Petroleum Reserve

Number 4, known as Pet-4, it was the last of four reserves to be placed under control of the U.S. Navy. Other reserves still under control of the Navy are: Elk Hills and Buena Vista, California, and Teapot Dome, Wyoming.

NPRA, totaling 37,000 square miles in area, is located in a vast sedimentary basin on Alaska's North Slope, west of the Prudhoe Bay Oil Field. The Reserve is located mostly in the Arctic Coastal Plain and Foothills; its terrain is marked by tundra cover, underlaid by permafrost. The rough boundary of the Reserve extends from the Arctic Ocean on the north to the crest of the Brooks Range on the south, and from about Longitude 161° 50' W to the Colville River on the east.

The presence of oil on Alaska's North Slope has been known for decades. Coastal Eskimos occasionally used tar from oil seeps for fuel, and whalers and traders reported seepages along the Alaskan Arctic coast in the late 1800s. Inland Eskimos reportedly also burned oil shale, which they called "blubber stone."

Exploration for petroleum was conducted in Pet-4 by the Navy between 1944 and 1953. Although none of the petroleum deposits discovered was large enough to warrant development, they did provide positive evidence of a potential major oil province on the North Slope. Because of the many large anticlinal structures and prominent oil and gas seeps, exploration was largely confined to shallow sedimentary formations. The large oil deposits discovered at Prudhoe Bay in 1968, however, were found in deeper formations in an unusual geologic setting. This discovery indicated that commercial petroleum reserves in NPRA could possibly occur in deeper formations than those previously examined. The exploration program underway is designed to determine the possible presence of oil and gas in these deeper formations as well as in other, as yet untested, geologic settings.

### Current and Upcoming Vacancies for Which California Department of Consumer Affairs Is Seeking Candidates

#### Board of Registration for Geologists and Geophysicists

- 1 Petroleum Geologist
- 1 Engineering Geologist
- 1 Geophysicist

RICHARD B. SPOHN, *Director*  
Dept. of Consumer Affairs

## Northern California

The Northern California Geological Society had a successful opening meeting of their "winter series" in September, made possible by David W. Scholl of the USGS. He gave a talk on the Pacific Coast offshore basins from southern California to northern Alaska, pointing out variations in geologic character and in apparent oil and gas potential. Operational hands experienced in these areas consider Dave's presentation worthwhile and provocative. Of interest was his pointing out that the Survey has been able to continue its offshore geophysical off northern Alaska later this year, due to the exceptional retreat of the pack ice.

In October, William B. Beatty of S.R.I. International, Palo Alto presented a slide and technical tour of a wide variety of mining operations throughout the world. India, Africa, North America, and South America were included, with special emphasis on lesser known and smaller operations. His description of mica, manganese, barite, asbestos, and even guano exploitation reminded us that mineral deposits continue to be found and developed by man's amazing curiosity and ingenuity.

Members of the NCGS, keep those dues coming in!

Officers taking over as of July 1 are: President, Roger G. Alexander, Jr., Chevron Overseas; Vice President, Joseph W. Fusso, Jr., Chevron U.S.A.; Secretary, Robert C. Erickson, Chevron U.S.A.; Treasurer, Pierina R. Nicholson, Oakland Museum; President-elect, Leslie B. Magoon, USGS.

ROGER ALEXANDER

### State Board of Registration for Geologists and Geophysicists 1978 Examination Schedule

Examinations will be given:

Geology and Geophysicist—May 19, 1978

Engineering Geologist—May 20, 1978

**Final Filing Date for May Examinations — February 19, 1978**  
Geology and Geophysicist — November 17, 1978

Engineering Geologist — November 18, 1978

**Final Filing Date for November Examinations — August 17, 1978**

JOHN E. WOLFE  
*Executive Secretary*  
(916) 445-1920

## SECOND CIRCUM-PACIFIC ENERGY AND MINERAL RESOURCES CONFERENCE

The Circum-Pacific Energy and Mineral Resources Conference will be held July 30-August 4, 1978 in the Mid-Pacific Conference Center at the Hilton Hawaiian Village, Honolulu. This international conference is sponsored by the American Association of Petroleum Geologists, the Committee for Coordination of Joint Prospecting for Mineral Resources in Asian Off-shore Areas, the Pacific Science Association, the American Mining Congress, and the University of Hawaii, and is supported by 72 geoscience societies around the world. Approximately 135 invited papers on petroleum, coal, geothermal energy, nuclear energy, minerals, groundwater, and environmental geology will be offered by outstanding international scientists, economists, and statesmen.

### General Sessions July 30-August 1, 1978

The all-conference general sessions will present both policy addresses and regional papers. The All-Conference Luncheon on Monday will feature an address by the Right Honorable J. Douglas Anthony, M.P., Deputy Prime Minister of Australia.

The opening address of the morning will be given by the Honorable George R. Ariyoshi, Governor of Hawaii, who will be followed by Senator Harrison "Jack" Schmitt. Then Dr. Mohammed Sadi, Minister of Mines, Indonesia, will speak on "Energy and Mineral Resources of Indonesia."

Later speakers on national and international policy will be Ms. Patsy Mink, U.S. Secretary of State for Oceans and International Environmental and Scientific Affairs, who will speak on "Environmental aspects of international energy and mineral development"; Dr. Friedrich Bender, President, Federal Institute for Geosciences and Natural Resources, West Germany, who will discuss "World future energy supply"; Dr. Harrison Brown of the East-West Center, who will talk on "Critical energy problems in the Pacific Basin"; Mr. Robert J. Foster, Broken Hill Proprietary Company Limited, Australia, who will raise the question "Should Australia export natural gas?"; Dr. Northcutt Ely, attorney on international law, who will speak on "The law of the sea"; and Dr. Ola Wattne, Deputy Director, Ministry of Petroleum, Norway, will speak on "The Norwegian experience - oil in a developed country."

Among the regional papers in the general sessions will be "The Sunshine project" by Dr. Masao Kubota of Japan, "The petroleum geology of the Peoples Republic of China" by Dr. A. A. Meyerhoff, "A synthesis of Joides results in the Pacific" by Dr. E. L. Winterer, "The Petroleum geology of the Reforma area, southeastern Mexico, and references to the exploratory effort in Baja, California" by Dr. Eduardo Guzman, and "The geothermal potential of the Circum-Pacific region" by Dr. Donald E. White. Also included will be a paper on the Alaskan pipeline and reports on the Circum-Pacific Map Project by Michel T. Halbouty and John A. Reinemund.

### Special Sessions, August 2-4, 1978

The special sessions will run concurrently Wednesday, Thursday, and Friday. They will include approximately 26 papers on petroleum, seven papers on coal, 2\* papers on non-energy minerals, five papers on uranium, 16 papers on geothermal energy and groundwater, eight papers on tectonics, six papers on renewable energy sources, and 20 papers on environmental geology. Six of the minerals papers will be presented in a symposium Wednesday morning, August 2, on "Ore genesis in the trenches." This will be chaired by Dr. George P. Woollard and will include a paper by Dr. Creighton A. Burk entitled "The tectonic framework of the Middle America trench."

### International Educational Exhibits

The educational exhibit pavilion will provide a relaxed atmosphere where an expert, his colleagues, and some students can gather to discuss more thoroughly the papers presented. An effort will be made to have "Meet the Speaker" hours each day in this pavilion. Poster shows, particularly on environmental geology, are contemplated in the Sea Pearl Room off the beautiful Tapestry Lounge. The new Circum-Pacific geographic maps will be displayed.

### Earthquakes and the Ring of Fire

A special educational feature for the public as well as for the delegates and their families will be an evening public lecture by Dr. Barry C. Raleigh of the U.S. Geological Survey. His topic "Earthquakes and the Ring of Fire" will cover the principal earthquake disasters in the Pacific since the 1906 San Francisco quake and relate them to the volcanism that rings the Pacific basin. The present status of earthquake prediction and continuing international research along these lines will be discussed.

### Geoscience Training Program

Details of the workshops listed below and *necessary pre-registration forms will be sent to interested persons*. For further information mail request to: 1978 Circum-Pacific Conference, c/o AAPG, P.O. Box 979, Tulsa, OK, U.S.A. 74101.

### Pre-Conference Workshop on Basin Analysis, July 24-28, 1978

This pre-Conference workshop will relate modern subsurface methods to basin analysis and resource appraisal. Fundamental concepts of basin analysis will be discussed but emphasis will be placed on the use and interpretation of different logging methods in boreholes to obtain data for analysis of stratigraphic assemblages and resource potential of basins. Registration will be limited to 200 persons. Fee \$100.00.

### Pre-Conference Workshop on Satellite Remote Sensing, July 24-28, 1978

A workshop on the application of satellite remote-sensing techniques to mineral-resource exploration will be presented by geologists from the U.S. Geological Survey's Earth Resources Observation System (EROS) Program. This course is designed to familiarize scientists with fundamental principles that are applied in geologic remote sensing and with currently available sources of satellite data for international exploration programs, particularly in the Circum-Pacific region. Workshop exercises will apply analytic and interpretative procedures to the reduction of satellite data to useful geologic information. Registration will be limited to 50 persons. Fee \$100.00.

### Post-Conference Landslide Workshop, August 5, 1978

A workshop on the "Recognition and reduction of landslide hazards" is proposed to provide instruction on (1) recognition of landslides on aerial photographs and topographic maps, (2) the preparation of regional landslide inventories and landslide susceptibility maps, (3) economic factors and (4) planning tools. Registration will be limited to 25 persons. Fee \$50.00.

### Geological Field Trips (Take one or all)

- (A) Island of Kauai, July 29-30
- (B) Island of Oahu, August 6
- (C) Island of Maui, August 6-7
- (D) Island of Hawaii, Puna District, August 7-8
- (E) Island of Hawaii, Kona Coast, August 9-10

## THE WINDFALL MYTH

Windfall has been defined as "an unexpected or sudden gain," but it also means "something that is blown down by the wind." This latter definition may well describe the petroleum industry if Federal, state and local governments do not cease their imposition of ridiculous restrictions and roadblocks.

What, one might ask, has triggered these impositions? Certainly they are due in part to the fact that elected officials, government employees, and, indeed, the public in general have become militantly anti-profit in their attitude. One Senator termed profits "obscene." On the other hand, however, he omitted to define what constitutes a "chaste profit."

In defense of profits the American people must be reminded that making an adequate profit is the American way of doing business. If it were not for profits the United States would still be a poorly developed, agrarian nation, much like Soviet Russia remains today! Existing industry thrives on profits that keep its plants in good order and expanding, and new businesses are formed from profits of established industry. If our industries cease to make profits our industries will cease to exist. If the profit motive is killed by governmental decrees the American way of life will end.

At present the public eye focuses on the petroleum industry more than on any other part of our business complex. In months that our Washington establishment has spent debating an energy policy a driving impetus to levy more taxes to keep "those oil companies" from making "windfall profits" has prevailed.

For the record, let us examine just what the profit picture looked like last year for the large oil companies. There were 18 U.S. companies that grossed over \$3 billion in 1976. The highest rate of return on gross income of the 18 was only 7.8 percent; the lowest return, 3.2 percent. If you had bought a share of stock this year in the company paying the best dividend return you would be earning 6.6 percent on your money — about the return on a one-year savings certificate. The lowest return company would pay you a mere 1.5 percent.

By comparison, Houston Lighting and Power, a utility, had a 12.5 per-

cent return on gross income in 1976 and is currently paying about 5.6 percent to its shareholders. The comparison hardly justifies accusations of obscene profits!

What exactly perpetuates the Windfall Myth? Would there really be a windfall of profits if oil and gas prices were deregulated? If an industry is making an inadequate return, a so-called windfall could mean the difference between life and death.

Law makers, policy makers, or whatever the Washington establishment can be called, should be directed toward a closer scrutiny of the activities of the large petroleum companies before forming opinions or making ill advised statements. Only the four largest of the 18 companies and two others heavily into marketing invested less than their net income in exploration and production of oil and gas. The other 12 companies spent more than net income, and two of the companies spent more than twice their net incomes on exploration and production. In addition to these expenditures, each company also made large investments on refineries, pipelines and other petroleum related projects; furthermore, there were many millions spent on capital ventures such as uranium, coal, oil shale, and other diversifications.

Capital funds generated from net income, and depletion, depreciation, and amortization charges provide the investment dollars for petroleum companies large and small, but of the 18 largest companies only five invested less than their cash flow, and those five, only slightly less at that! The rest of the companies made capital investments in excess of cash flow, and in two cases the companies invested over twice their available funds. Increases in long term debt are a common occurrence in the industry.

An industry that employs 1,500,000 of the United States' population, that invests sums in excess of net income to further the flow of petroleum energy, 1) provides fuel for almost all other domestic industries, 2) keeps the entire population warm and lighted, and 3) moves the population from place to place, needs much more capital than it can generate now under controlled oil and gas prices.

Additional so-called "windfall profits" from deregulation of crude oil and natural gas — a substantial part of which would be taxed away — would be a welcome incentive to drill more wells, produce more oil and gas, and deliver more energy.

EDD R. TURNER

## San Joaquin

Apologies to all involved over my (our) belated thanks for a worthwhile and well attended February short course. We had over 300 rock knockers in attendance, something we all are proud to admit. The finance committee celebrated, too. So much for the short month.

March saw a successful high school Career Days booth at the local Civic manned (and laded) by several who should have been thanked long ago, including Bruce Blythe, Jack Carter (does he have a brother?), Sue Chandler, Orange George Kendall, Mike Mitchell, Ron Reese, and Jacqueline Winer. Thanks again. Positive and well timed information to the public, and particularly to the future leaders of both our society and nation is always worth that extra effort. The industry needs more of this kind of PR.

April was a month none will forget. Old friends and many new gathered for the Pacific Section AAPG Annual Meeting. Activities ranged from the usual to the odd, but we all enjoyed having our brains (and tummies) filled with those things that impress the most, good ideas and good food. We undoubtedly had some of the very best papers of the year presented. It would be unfair to point out one or two from such a fine list, HOWEVER, Don Taylor's statement, in his discussion of Yowlumne, that they had the field mapped perfectly with a NE-SW trend nearly brought the entire Civic down.

The meeting was also fun. Tennis was included this year (and next year, also) for the first time, and all of us losers enjoyed watching that final set. We are all going to be ready next year in Sacto. What is golf?

The summer saw a slowdown of activities while a new list of characters assumed their roles of importance and esteem, or is it necessity and survival. Whatever!

In any case, the proud new cast includes:

<i>President</i>	
Hy Seiden .....	Consultant
<i>Vice President</i>	
Wes Franklin .....	Tenneco
<i>Secretary</i>	
Don Collins .....	Occidental
<i>Treasurer</i>	
Jeff Smith .....	Chaparral
<i>Continuing Education</i>	
Don Collins .....	Occidental

(continued on page 7)

*Delegate to Pacific Section*

Ralph Pegors ..... Welex

*Newsletter Editor*

Jeff Smith ..... Chaparral

If this new group performs as well as last years leaders, our society will be tough to beat. Thanks for a fine job last year Captain John and staff.

JEFF SMITH

**UCLA**

The Department of Earth and Space Sciences, University of California Los Angeles, is seeking a palynologist for a part-time temporary position as Lecturer, possibly to offer a Spring 1978 course concerning the uses of pollen and spores in biostratigraphy, paleoecology and evolution, and the uses of palynomorph color and vitrinite reflectance in interpreting the thermal alteration of organic matter. UCLA is an equal opportunity employer. Send bibliographic data by December 1, 1977 to Professor Helen Loeblich, Search Committee Chairperson, Department of Earth and Space Sciences, University of California, Los Angeles, California 90024.

CLARENCE A. HALL, JR.  
Chairman (213) 825-1475

**CALIFORNIA WELL  
SAMPLE REPOSITORY**

9001 Stockdale Highway  
Bakersfield, CA 93309

**Well Sample Repository  
Catalog Available**

A catalog of the rock sample material contained in the California Well Sample Repository is available free on request. These catalogs may be obtained from:

Dr. John R. Coash—Project Director  
School of Natural Sciences  
and Mathematics  
California State College, Bakersfield  
9001 Stockdale Highway  
Bakersfield, CA 93309  
(805) 833-2221

**Location of the Repository**

The Repository is located on the campus of California State College, Bakersfield. The facility is contained in a 6,000 square foot prefabricated steel building completed and dedicated in March, 1976. This building provides space for organized rock sample storage, rock processing equipment, investigative study space and an administrative office. Grant funds received from the Western Oil and Gas Association provided for this building.

**Organization and Administration**

The California Well Sample Repository was established in July 1975 by an Advisory Committee composed of representatives from industry, professional geologic societies, public and private higher education, the U.S. Geological Survey and agencies of the State of California including the State Lands Division, the Division of Oil and Gas and the Division of Mines and Geology. This Committee provides continuing support of the Repository by establishing operating by-laws, by providing fund raising support, by giving guidance in the selection and acceptance of representative rock sample material for collection storage and by providing general guidance in the operation of the Repository in order to maximize the public benefit of the facility.

The Repository is operated by the California State College, Bakersfield Foundation, which provides the personnel, equipment and facilities for the operation of the facility. Grants, donations and other funds received in support of the Repository are administered by the Foundation. The Project Director acts for the Foundation, is the Executive Secretary of the Advisory Committee and is in overall charge of the operation of the Repository.

**Purpose of the Repository  
and Stored Materials**

The purpose of the Repository is to collect, store and preserve rock samples representative of the geologic history, stratigraphic sequences, rock properties and mineral resources of the State of California. The rock samples collected are available for public examination and investigation. The collection contained in the Repository at the present time includes donated rock sample materials from some 1,900 California oil and gas wells. To the extent possible, available ancillary data including well histories, electric logs, core descriptions and rock analyses are collected on wells contained in the Repository.

In addition to oil and gas well samples provision is made for the accumulation and preservation of representative rock sample suites from mining districts, significant outcrop sample collections, near surface and foundation boring samples and mineral commodity samples and collections.

Materials contained in the Repository have been donated from oil company private collections, recently drilled wells, engineering projects and special purpose studies.

Foundation boring samples from several major engineering projects in California, including the Oroville dam site and the Coronado-San Diego Bay bridge are contained in the Repository. Engineering boring samples are considered to be a very important part of this continuing effort to assemble a representative collection of California rock sample materials for public use, study and reference. Donation of engineering samples and oil and gas well cores and samples is encouraged; discussion with the Project Director, John Coash (805) 833-2221, prior to delivery of materials to the Repository is recommended. While collection emphasis is upon California material significant out-of-state rock materials will be accepted.

**Repository Storage Methods**

Card file index of rock sample materials contained in the Repository is maintained on a current basis; from the card file index catalogs are prepared annually for distribution. Telephone inquiries regarding rock materials contained in the Repository may be made to the Repository Curator, Jack Tucker (805) 833-2324.

Oil and gas well sample materials received are, to the extent possible, stored in standardized cardboard containers, labeled for retrieval and

(continued on page 8)

**PACIFIC SECTION —  
AMERICAN ASSOCIATION  
PETROLEUM GEOLOGISTS**

**Executive Committee**

President .....	VERN C. JONES (916) 482-4950
President Elect .....	ROBERT N. HACKER (213) 884-4071
Vice President .....	THOMAS L. WRIGHT (415) 894-0725
Secretary .....	STANLEY E. KARP (805) 395-4438
Treasurer .....	NANCY B. OLSON (213) 385-0515
Past President .....	EUGENE F. REID (805) 324-6771
Editor .....	JOHN W. LIDSTROM (213) 385-0515

**Newsletter Staff**

Editor .....	JOHN W. LIDSTROM
Assistant Editor .....	RON J. SCHMELA
Membership Secretary .....	BETTY BEAN

**Associate Editors**

Alaska .....	DICK E. ATCHISON (907) 272-5417
Coast .....	KEITH WHALEY (805) 659-7600
Los Angeles .....	TOM REDIN (213) 945-1221
Northern California .....	OTTMAR F. KOTICK (415) 948-0950
Sacramento .....	TERRY PLUMB (916) 482-8490
San Joaquin .....	JEFF SMITH (805) 834-5234
Recommended Reading ....	LUCY E. BIRDSALL (213) 688-2850

NEWSLETTER of the Pacific Section—American Association Petroleum Geologists is published quarterly by the Pacific Section.

Material for publication and requests for previous copies should be addressed to JOHN W. LIDSTROM, TEXACO INC., 3350 WILSHIRE BLVD., L.A., CALIF. 90010.

CHANGE OF ADDRESS, subscription, and membership inquiries should be directed to: MEMBERSHIP SECRETARY, PACIFIC SECTION AAPG, P.O. BOX 1072, BAKERSFIELD, CALIFORNIA 93302.

(from page 7)

placed on steel shelving. The cardboard containers have dimensions of 41 x 15 x 2½ inches and each carton contains up to 10 feet of rock material. Large diameter core material may be center-sliced to maximize storage space and the residual material discarded. Engineering boring material is generally retained, totally, in the manner in which it is received.

#### Examination Facilities and Use

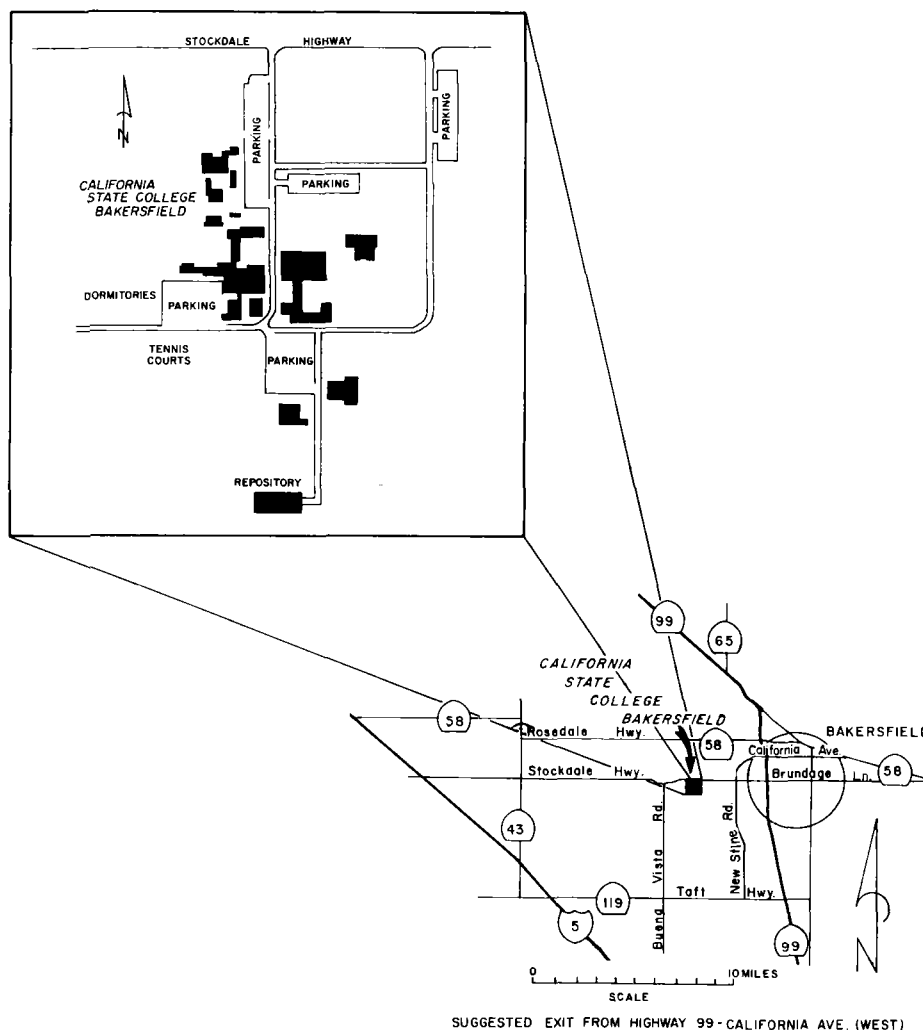
Examination space is maintained and available in the Repository building. At the present time examination equipment is limited and it is suggested that Repository users provide their own microscopes and other examination equipment. Rock property analysis equipment is not presently available at the Repository. By prior arrangement rock material may be taken from the Repository for testing and analysis at commercial facilities at the users' expense or to the users' own facilities; residual rock material and a copy of all test and analysis results must be returned to the Repository.

The Repository is open for public use from 8:00 to 12:00 a.m. and 1:00 to 5:00 p.m. Monday through Friday. A nominal fee is charged for Repository use. For the convenience of Repository users it is suggested that the Curator, Jack Tucker (805) 833-2324 be contacted prior to visiting the Repository.

E. C. SPROTTE

Senior Geologist, California Division  
of Mines and Geology

## LOCATION MAP — CALIFORNIA WELL SAMPLE REPOSITORY



SUGGESTED EXIT FROM HIGHWAY 99 - CALIFORNIA AVE. (WEST)

CALIFORNIA STATE COLLEGE, BAKERSFIELD

9001 Stockdale Highway • Bakersfield, CA 93309 • (805) 833-2324

## NEWSLETTER

Pacific Section A.A.P.G.

P.O. Box 1072

Bakersfield, California 93302