



PACIFIC PETROLEUM GEOLOGIST

NEWS LETTER OF THE PACIFIC SECTION

AMERICAN ASSOCIATION OF PETROLEUM GEOLOGISTS

Vol. 25

FEBRUARY, 1971

No. 2

PRESIDENT CURRY SPEAKS

Speaking before the Southwest Section of the AAPG at Abilene on February 8th, Curry said that a common membership for closely related groups would eliminate duplication of membership requirements, certification, and fees, and could preserve to petroleum geologists a "strong voice in oil and gas industry councils in Washington and around the country."

Curry said that he has proposed a common membership to the Presidents of the Society of Exploration Geophysicists, the Society of Economic Paleontologists and Mineralogists, and the American Institute of Professional Geologists, and it is hoped that advisory groups will be formed by each of the organizations to study the merits of the proposal. In addition, he said, AAPG and the Society of Independent Professional Earth Scientists are working on a certification reciprocity agreement in an effort to eliminate duplication of procedures. AAPG is the largest geological organization in the world, with more than 15,000 members.

Curry pointed out that the future problems of AAPG and of geologists in general will become more and more involved with federal and state authorities. "With the federal government heavily subsidizing large areas of geologic research and support, there is the added burden of speaking against so large an employer and financier," he said.

In calling for a stronger voice for geologists in industry and government affairs, Curry said, "Our needs must be clearly defined and clearly articulated by ourselves."

ARCTIC SYMPOSIUM AT SAN FRANCISCO

The second symposium presented by Pacific Sections AAPG, SEPM, SEG, and the Northern California Geological Society was attended by an international gathering of over 1,648 geologists, earth scientists, and associates. The Arctic was pictured as a vast new frontier for oil where the Russians have already found the largest gas field in the world, and the American estimates of the giant Prudhoe Bay Field are conservatively placed at over 15 billion barrels.

Over 140 technical papers were presented at the four day meeting. The symposium was marked by extremely

cordial relations between American, Canadian and European geologists and a group of nearly a dozen Soviet scientists who came from various posts throughout Russia.

RUSSIA

It was an American, A.A. Meyerhoff who, with the cooperation of the Soviets, best summarized the results of the Russian exploration efforts in the Arctic. Meyerhoff stated that "Russia has discovered over 40 billion barrels of proven-plus-probable oil and over 500 trillion cu. feet of proven-plus-probable gas. The ultimate reserves will be more than three or four times these amounts. The Russian Arctic is unquestionably one of the richest hydrocarbon provinces on earth."

The West Siberian basin, covering 1,750,000 sq. km. contains the Urengoy gas field, with proved reserves of 90 trillion cu. ft. and a "proved-plus-probable reserve of 210 trillion." The field is 95 km long and straddles the Arctic Circle.

The basin, Meyerhoff said, has 111 fields, of which 29 are known to be giants (at least 1 billion bbl. oil or 3.5 trillion cu. ft. of gas). Most of the 20 gas giants are in the northern Arctic.

Gas production is principally from the Cenomanian, though there is some Turonian, Neocomian, and Jurassic. Oil is from the Jurassic and Lower Cretaceous.

— Cont'd. on page 4

PACIFIC SECTION CANDIDATE SLATE

The following Pacific Section members are the 1971-2 candidates for executive officers:

President:

J. W. Bedford . . . Texaco, Inc. Los Angeles
R. L. Hester Consultant Los Angeles

Vice President:

K. B. Hall (Pete). Consultant Ojai
John Maher U.S.G.S. Menlo Park

Secretary:

R. G. Lindblom . . Standard Oil Co. Los Angeles
T. W. Redin Union Oil Co. Santa Fe Springs

Treasurer:

D. E. Hallinger . . Pacific Lighting Los Angeles
G. M. Pittman . . . Getty Oil Co. Bakersfield

EXECUTIVE COMMITTEE PACIFIC SECTION AMERICAN ASSOC. OF PETROLEUM GEOLOGISTS

JOHN F. CURRAN PRESIDENT
ARTHUR O. SPAULDING VICE PRESIDENT
VINCENT F. SCURY SECRETARY
MARIE J. CLARK TREASURER
J. DOUGLAS TRAXLER PAST PRESIDENT
PETER J. FISCHER EDITOR
TOM W. REDIN LOS ANGELES DELEGATE
JOHN A. CARVER SAN JOAQUIN DELEGATE
ROBERT J. LANTZ N. CALIF. DELEGATE
DANA B. BRAISLIN NORTHWEST DELEGATE
D. E. RITZIUS COASTAL DELEGATE
VERN C. JONES SACRAMENTO DELEGATE
DEAN L. MORGRIDGE ALASKA DELEGATE

PACIFIC PETROLEUM GEOLOGIST

Published monthly by the PACIFIC SECTION AMERICAN ASSOCIATION OF PETROLEUM GEOLOGISTS.

CHANGE OF ADDRESS. Subscription and membership inquiries should be addressed to:

MEMBERSHIP SECRETARY, Pacific Section AAPG
P.O. Box 17486, Foy Station
Los Angeles, California 90017

MATERIAL FOR PUBLICATION and requests for missed copies should be addressed to:

PETER J. FISCHER, Department of Geology
Whittier College, Whittier, California 90608

EDITOR PETER J. FISCHER
ASSISTANT EDITOR KEITH E. GREEN
SCIENCE EDITOR BENNIE W. TROXEL
SELECTED BIBLIOGRAPHY LUCY BIRDSALL

CORRESPONDENTS

ALASKA GENE TRIPP
COAST THOMAS K. BJORKLAND
LOS ANGELES DENNIS R. WILEY
NORTHWEST GERALD W. THORSEN
SACRAMENTO
SAN FRANCISCO CHARLES M. CROSS
SAN JOAQUIN ROD NAHAMA
MEMBERSHIP SECRETARY JUDY HUGHES

LETTERS TO THE EDITOR

The Pacific Section, AAPG is unique among the AAPG sections. AAPG members from Alaska, California and the Pacific Northwest are urged to join and pay dues to the Pacific Section. The Section in turn assigns each of its members to membership in the affiliated local geological society nearest him geographically. The affiliated local geological societies, with the exception of the Alaska Geological Society, collect no dues, but are allowed to draw on the Pacific Section for mailing services and support for AAPG distinguished lecturers up to an amount equal to two dollars per year per Section member. Any money not used in this manner during the fiscal year becomes part of the Section's general fund.

All other AAPG sections collect no dues, for they have but two primary functions, both fund-raising in nature: 1.) Regional AAPG conventions, and 2.) publish contributions to regional and local geology. I believe that the unusual organization of the Pacific Section results from the fact that until a short time ago it was primarily the local geological society of the Los Angeles basin.

The local geological society is the professional organization that due to geographic proximity and relatively small size permits -- in some cases almost demands -- the active participation of the average geologist. The local society is the operational unit in the structure of the professional organization, and provides most geologists with the majority of his professional and professional-social contacts. The local societies perform many functions, most of which are not fund-raising

in nature, and in other than the Pacific region are supported by membership dues.

Within the large geographic area encompassed by the Pacific Section, the Section, not the local society is the dominant organization, and it actually competes with the local societies in some activities. This is surely not by plan or intention, but is simply a holdover from the original local society function of the Pacific Section. The result, however, weakens the local geological societies affiliated with the Pacific Section.

I wonder if other members have similar or differing views? Perhaps they will express them in the Pacific Petroleum Geologist also.

Robert J. Lantz

U.S.G.S., Menlo Park

(This letter expresses a viewpoint similar to that of President William H. Curry on this issue's front page -- Editor)

Meeting Meeting Meeting.

Board Meeting Board Meeting Board Meeting.

The history of our times can be told in terms of meetings, he's in a meeting, he had to go to a meeting, this is the day of our board, financial, up-the-down-staircase, stockholders', non-stockholders' Monday Tuesday Wednesday Thursday Friday Saturday meeting, he has a meeting this afternoon, he has a committee meeting a subcommittee meeting this morning let's have a meeting tonight yes he's here but he's at a meeting sometimes people have been known to spend 82 per cent of their business, working, professional lives in meetings.

Nobody knows yet whether this is good or bad.

From: Adela Rogers St. Johns, TELL NO MAN p. 283

(Does this sound like your company?? -- Ed.)

EDITORIAL:

"PACIFIC GEOLOGIST"

Our organization is no longer, nor has it been for some time, a purely petroleum geologist's section of the AAPG. Therefore, in view of President Currys common membership speech (front page), Bob Lantz letter (Letters to Ed.), and opinions expressed by many other members we wish to propose a new name for the newsletter.

"Pacific Geologist" is our suggestion. A number of members from Alaska to Los Angeles have suggested this change, however, other possibilities include "Western States Geologist", "Far Western Geologist", and others. To us, however, "Pacific Geologist" is most apropos.

We are inviting your comment, dissension, criticism, . . . or even agreement?

Editor

1971 DIRECTORY

The new 1971 Directory of the Pacific Sections AAPG, SEPM and SEG is in the final stage of preparation. Pre-publication orders of \$4.00 will be accepted through March 31. Send your order to: Donald E. Hallinger, 720 W. 8th St. Los Angeles, Calif. 90017.

CALENDAR

The Los Angeles Basin Geological Society will present A.A.P.G. Distinguished Lecturer, IRA H. CRAM, at its March meeting.

Below is Mr. Crams abstract in condensed form so subscribers might get a more accurate picture of the meeting's proceedings.

PETROLEUM POTENTIAL OF THE UNITED STATES

The discovery of hydrocarbons in unusual environments improves the geologists' oil-finding ability. The future supply of domestic petroleum depends on these unusual discoveries.

The authors of the Association's Memoir 15 "Future Petroleum Provinces of the United States" have assembled old and new exploratory data in approaching the problem of locating hydrocarbon accumulations in untested geologic environments.

Reduction of proved reserves depends upon economic, political and technological developments. The increasing complexity of hydrocarbon discovery demands the growth of the petroleum geologist as earth scientist, explorer, and salesman.

Increased exploratory drilling is necessary for testing petroleum traps and for analysis of large undrilled areas. Industrial and Governmental restrictions on explorations commit a large part of the petroleum resources to remain uselessly in the ground.

— Ira H. Cram

WEEK-END INFORMAL FIELD EXCURSIONS

— Bring the wife (and kids) —

A series of informal field trips have been planned - the program for coming months will be published shortly. Members, non-members, students etc. may participate. All participants will provide personal transportation, refreshments, food etc. The L.A. Society will provide inspiration and a speaker.

FIELD TRIP NUMBER ONE — Saturday, March 20, 1971

Meet at 10 A.M. in the parking lot at the Dana Point Marina. (A gathering sign will be posted).

Dr. Manley Natland will lead a discussion as we examine excellent exposures of sand filled submarine channels. Emphasis will be on marine & sedimentary processes.

Tide pooling and beach girl watching available.

1971 - SPRING FIELD TRIP AND BAR-B-Q

K.B. "Pete" Hall - General Chairman has announced the following plans for the annual spring outing, to be held Friday, June 4th, at the Ventura County Fairgrounds. An innovation this year, replacing the usual geological field trip, will be a look into the future in modern offshore drilling techniques - a tour through VETCO's Ventura Fabrication Plant and sub-sea equipment display, for a first hand look at what's going on, offshore, world-wide.

An old fashioned "Pit" Bar-B-Q with fun and games, following the tour - golf tournament at the Elkins Ranch Golf Course, will be held at the Ventura County Fairgrounds. Barrel beer will flow freely and all on hand are invited to pitch in and lend a helping hand.

Members of the local chapter A.I.M.E.-S.P.E. have been invited to participate in this outstanding offshore program and old fashioned "Mudsmellers" wingding - - So - - mark your calendar for June 4th and prepare for a swinging reunion of the clan.

USC NOON LECTURE SERIES - Spring Semester, 1971

(All lectures are given in Room 102, Science Lecture Hall, Tuesdays at 12:00. - *Thursday at 12:00).

- March 2 Professor John Rosenfeld, UCLA
"Solid Inclusion Piezothermometry"
- March 9 Professor Hugh Taylor, California Institute of Technology
"Oxygen Isotope and H-D Evidence on the Interaction Between Meteoric Water and Shallow Igneous Intrusions"
- March 16 Professor William Krumbein, UCLA
"Areal Patterns and Statistical Correlation of Beach Deposits"
- *March 18 Professor Charles Park, Stanford University
"Mineral Resources for the Future"
- March 23 Professor Robert M. Garrels, UCSD
"Sedimentary Cycling"
- March 30 Professor Donald Helmberger, California Institute of Technology
"Structure of the Crust and Upper Mantle"
- April 13 Mr. Henry H. Neel, Consulting Geologist
"Licensing, Certification, Interpersonal Relationships & Other Facts of Life Concerning Earning a Living as a Geologist"

USC RIVERSIDE

- *March 3 Clarence Allen, California Institute of Technology
"Geologic Structure and Seismicity, Comparisons between California, Chile and Japan"
- March Ariel Roth, Loma Linda
"Calcification in Corals"
- *April 21 John Isaacs, Scripps

*Possible "Field Trips"

PERSONAL ITEMS

U. S. GRANT IV, retired Professor Emeritus, recently christened the newly refurbished U.S. Grant Hotel in San Diego according to recent newspaper reports. Sounds like it was a real bash.

W. E. (Bill) Langenbahn, Signal, has been transferred from Midland, Texas to Los Angeles. His new assignment will be manager of domestic exploration.

KING NASH reports that Mobil Oil is combining its Los Angeles and Houston Stratigraphic Laboratories and moving them to a centralized facility in Dallas, Texas the first of January, 1971.

NORTH SLOPE

Characteristics of the rock in the Prudhoe Bay discovery well were released for the first time by ARCO's Bill Petilla, senior geologist.

The data show the Ivishak sandstone member of the Sadlerochit formation, where the best production in the 10-20 billion bbl. Alaskan field is located, has excellent grain density, porosity, and permeability. Also, it has a remarkable gross thickness of 452 ft. to 632 ft. averaging 565 ft.

The grain density ranges from 2.60 to 3.03 g/cc, averaging 2.71. Porosity of oil-stained sand ranges from 9% to 34%, averaging 22%. Permeability ranges from 2 md to 5 darcies, averaging 230 md.

Pentilla said much of the subsurface data at Prudhoe is still proprietary until a unit agreement is reached by the producers in the field.

He did disclose, however, that the Sadlerochit pool is a combination strat-trap formed by a south and south-west dip. Closure to the east is provided by the truncation of the Sadlerochit sandstone. The zone is sealed by Cretaceous shales. On the north are major east-west faults. On the west are faults and dip closure.

Pentilla presented a correlation chart on the Prudhoe field and discussed the depositional environment of the producing sands.

CANADA

Although Canada has yet to match Alaska or Russia in big discoveries, the potential is there. Several papers described the basins of the Arctic islands and Hudson Bay.

R. D. Johnson, Calgary geologist, estimated Hudson Bay basin, including the James Bay basin, has more

than 9 billion bbl. of oil and 55 trillion cu. ft. of gas. He called the estimate conservative using a recovery factor of 40,000 bbl/cu mile.

The region, he said, has optimum conditions for hydrocarbon accumulation for the combined Ordovician, Silurian, and Devonian. The better prospects are in the northern part of the basin.

Kenneth J. Drummond of Mobil Oil declared the Canadian Arctic islands too, have all the necessary geologic elements conducive to entrapment of prolific hydrocarbons. Oil sands, seeps, stains, and tarry deposits in outcrops indicate an "outstanding potential for the discovery of large oil and gas fields".

The areas with the greatest potential are the Sverdrup basin and the Franklinian fold belt.

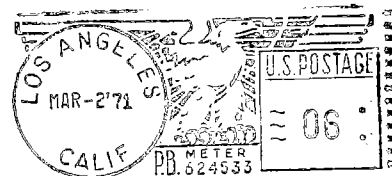
TRANSITION

EDWIN C. ALLISON — Dr. Allison, immediate past-President of the Pacific Section SEPM, died unexpectedly and suddenly on January 1, 1971 near Corborca, Sonora, Mexico while conducting field work with a group of students from San Diego State College. Ned was born Sept. 21, 1925 in San Diego, California completing his B.S. in paleontology and geology at U. C. Berkeley in 1951 and his M. S. in 1953 at the same university. After working for Standard Oil of California as a paleontologist he joined the Department of Geology of San Diego State College where he rapidly developed a wide reputation as a superb teacher while simultaneously initiating a vigorous research effort centered on the Cretaceous-Cenozoic paleontology, biostratigraphy and general geologic history of Baja California as well as completing his Ph. D. at U. C. Berkeley in 1964.

Ned is survived by his wife Elinor Mary and daughters Gwyneth, Anna, Natalie and Ammanda.

PACIFIC PETROLEUM GEOLOGIST
PACIFIC SECTION, A.A.P.G.
P.O. BOX 17486, FOY STATION
LOS ANGELES, CALIFORNIA 90017

FIRST CLASS



FRED R. NEUMANN
319 ORIENT ST.
CHICO, CAL 95926



PACIFIC PETROLEUM GEOLOGIST

NEWS LETTER OF THE PACIFIC SECTION AMERICAN ASSOCIATION OF PETROLEUM GEOLOGISTS

VOL. 25

APRIL, 1971

No. 3

A PROPOSAL TO BROADEN THE MEMBERSHIP BASE OF THE AMERICAN ASSOCIATION OF PETROLEUM GEOLOGISTS

The recent membership survey, as reported in the A.A.P.G. Executive Report by President Curry, suggests that the time has come to consider the direction the Association must take to maintain its eminent position in sedimentary geology. The total membership reached a peak of 15,271 members in 1967 and has declined about 200 a year since then. This decrease in itself is disturbing, but not so much as the fact that most of it seems to have been in the youngest age bracket. According to the recent survey, almost 95 percent of the 4,000 members responding have over 10-years experience, and only two-tenths of one percent have less than 5-years experience. Unless this trend is reversed the Association will surely lose its vitality.

The survey also showed that few members are engaged in mineral exploration (3 percent) and teaching (5 percent). Yet many of both categories deal primarily with sedimentary rocks, and use data and techniques from petroleum geology. Our failure to attract teachers may have a direct correlation with our failure to attract new graduates in geology.

At first glance, the recent survey seems to indicate that the membership is satisfied with the status quo. A majority (52 percent) voted to restrict A.A.P.G. to petroleum exploration; a minority of 48 percent voted to broaden A.A.P.G. to include exploration for "all natural resources." However, about 80% of the voters are presently engaged in petroleum work — a situation that weights the voting considerably against change — yet the ballot split almost 50-50. More importantly, the ballot was taken without many voters being fully aware of the declining membership and the increasing age of the membership.

AGI manpower reports for 1968 to 1970 indicate that the distribution of geologists in the subfields of geology are changing significantly. Petroleum geology decreased 15 percent, and the most closely associated subfields of areal and field geology, photogeology, and geohydrology decreased 18 to 21 percent. Environmental geology increased 243 percent; petrology, 44 percent, and coal geology, 35 percent. Inasmuch as 24 percent of the coal mined in the United States comes from four coal companies owned by oil companies, some of the gain in coal geologists probably came at the expense of petroleum geology.

If the AGI manpower studies that forecast a 25 percent decline in petroleum-geology employment in 5 years are correct, we are faced with the prospect of fewer graduate petroleum geologists joining the Association for economic reasons, and the possible conversion of many experienced

petroleum geologists into coal, mineral, engineering, and environmental geologists not directly interested in the Association programs and activities as they now exist.

In order that the Association may move forward with the times, I move, with the approval of the Pacific Section Executive Committee, that the Chairman of the House of Delegates appoint a committee to be charged with the following duties:

1. To prepare a historical summary of A.A.P.G. membership with projections to 1980 for distribution to members before December 31, 1971.
2. To open discussions with all Sections toward broadening the base of Association membership and modifying the name to reflect any broadening.
3. To prepare a resolution embodying any proposed constitutional amendments for consideration by the next House of Delegates meeting.

JOHN C. MAHER
Delegate No. Calif.

NEWLY ELECTED OFFICERS OF PACIFIC SECTION AAPG FOR 1971-1972 ARE:

RICHARD L. HESTER President
Consultant
1911 Montecito Drive
Glendale, Calif. 91208
(213) 393-9625

K. B. HALL Vice President
Consultant
11999 Santa Paula - Ojai Rd.
Ojai, Calif. 93023
(805) 525-3170

ROBERT G. LINDBLOM Secretary
Standard Oil Company
P.O. Box 4305
Inglewood, Calif. 90309
(213) 295-6361

DONALD E. HALLINGER Treasurer
Pacific Lighting Service & Supply
720 W. 8th Street
Los Angeles, Calif. 90017
(213) 689-3649

EXECUTIVE COMMITTEE PACIFIC SECTION AMERICAN ASSOC. OF PETROLEUM GEOLOGISTS

JOHN F. CURRAN PRESIDENT
 ARTHUR O. SPAULDING VICE PRESIDENT
 VINCENT F. SCURY SECRETARY
 MARIE J. CLARK TREASURER
 J. DOUGLAS TRAXLER PAST PRESIDENT
 PETER J. FISCHER EDITOR
 TOM W. REDIN LOS ANGELES DELEGATE
 JOHN A. CARVER SAN JOAQUIN DELEGATE
 ROBERT J. LANTZ N. CALIF. DELEGATE
 DANA B. BRAISLIN NORTHWEST DELEGATE
 D. E. RITZIUS COASTAL DELEGATE
 VERN C. JONES SACRAMENTO DELEGATE
 DEAN L. MORGRIDGE ALASKA DELEGATE

PACIFIC PETROLEUM GEOLOGIST

Published monthly by the PACIFIC SECTION AMERICAN ASSOCIATION OF PETROLEUM GEOLOGIST.

CHANGE OF ADDRESS. Subscription and membership inquiries should be addressed to:

MEMBERSHIP SECRETARY, Pacific Section AAPG
 P.O. Box 17486, Foy Station
 Los Angeles, California 90017

MATERIAL FOR PUBLICATION and requests for missed copies should be addressed to:

PETER J. FISCHER, Department of Geology
 Whittier College, Whittier, California 90608

EDITOR PETER J. FISCHER
 ASSISTANT EDITOR KEITH E. GREEN
 SCIENCE EDITOR BENNIE W. TROXEL
 SELECTED BIBLIOGRAPHY LUCY BIRDSALL

CORRESPONDENTS

ALASKA GENE TRIPP
 COAST THOMAS K. BJORKLAND
 LOS ANGELES DENNIS R. WILEY
 NORTHWEST GERALD W. THORSEN
 SACRAMENTO
 SAN FRANCISCO CHARLES M. CROSS
 SAN JOAQUIN ROD NAHAMA
 MEMBERSHIP SECRETARY JUDY HUGHES

CALENDAR

ANNUAL PACIFIC SECTION AAPG SPRING FIELD TRIP & BAR-B-Q

K.B. Hall, General Chairman for this year's program announced the following plans for our annual spring outing:

DATE: Friday, June 4th

PLACE: Ventura County Fair Grounds

Replacing the usual field trip will be a tour of the VetCo facilities in Ventura. Members will take a look at future offshore drilling & completion techniques. The VetCo Company is one of the largest designers and Fabricators of this type of equipment. The trip will consist of films, pictures and displays of the various components.

Highlight of the tour will be an explanation of Humble's prototype Satalite Seafloor Well Servicing installation.

A morning and afternoon tour is planned. Golfers desiring to make the trip should get an early starting time in order to make the afternoon trip.

An old fashioned pit Bar-B-Que will be held at the fair grounds under the able direction of Jack Wood and Charlie Lee. Barrel beer will flow freely and all hands are invited to help the chefs. Golfers will meet on the green of Olivas Park in Ventura with Bill Castle and his shock troops controlling the nine iron sod samples. The local chapter of the AIME-SPE has been invited to join us so keep June 4th open for an "Olde Fashioned get together" with a forward look.

MORE FIELD TRIPS!

The "WIFE" program, (Weekend Informal Field Excursions - with family) is underway. Dr. Manly Natland conducted the first meeting, Saturday, March 20, at Dana Point. Forty-eight geologists, wives, girl friends and children watched "Nat" run his classic sediment-trough experiments. then checked the comparison of experimental & field data. Sea cliff exposures of San Onofre Breccia and Capistrano channel sediments were explained in terms of the new Natland sedimentary terminology. Families brought their own food and drink and picnicked on the beach. Kids chased squirrels . . . old men whistled at girls . . .

Future "WIFE" trips in the mill: Scripps Institute & the La Jolla coast; San Gabriel Fault & Violin Breccia; Red Rock Canyon; San Gabriel Mts., morphology, structure & petrology; Turbidities of the Santa Paula Creek - Matilija area; Pala Gem District, Joshua Tree National Monument, Geology, Archeology, history, (camp-out); Refugio Pass-Nojoqui Falls and The Cretaceous of the Santa Ana Mts.

Send your pet suggestions to Tom Baldwin, 2184 Crescent Dr., Altadena 91001, Phone (213) 681-9774.

These trips will be announced ONLY in the P.P.G. All geologists, friends and families are welcome. Provide your own transportation, food & drink.

TRIP #2, LA JOLLA AREA

Meet at the parking lot just north of Scripps pier, La Jolla, at 10 A.M., May 22. (See map) Dr. Francis P. Shepard, the father of modern marine geology, will discuss concepts of sediment transport and describe his pioneer work in submarine canyons. Dean Milo will lead a beach walk to examine Cretaceous & Eocene sediments. Reference: Bulletin 170, Chapter 11, part 3.

TRIP #3 (Carve this one on your arm . . . there may be no other announcement!) Violin Breccia & San Gabriel Fault. Conducted by Dr. John Crowell. (He invented the fault!) Meet at 10 A.M., June 12.

From Los Angeles leave the Golden State Freeway (Rt. #5) at the Hungry Valley Turn-off (well signed), about 10 miles south of Gorman; assemble near the turn-off at a deserted gas station. We will proceed to the Hard Luck Camp Ground on Piru Creek. John will lead two "strolls" (plus or minus 1 mile each) among the rocks & pools of Piru Creek. We could have hot weather, cold drinks & hats recommended. Use bulletin 170, Map Sheet #7 as a guide.

NORTHERN CALIFORNIA GEOLOGICAL SOCIETY

Luncheon meetings (12:00) will be held on the third Friday of each month at the El Rancho Motel restaurant at 1100 El Camino Real, Millbrae (opposite San Francisco airport).

- May 21 Chevron Overseas, Petroleum developments in the Far-East-Indonesian area.
- June 18 Installation of officers and a report on the Los Angeles earthquake.

The annual spring field trip, to be held on May 8, will be led by Bob Nason. The active East Bay faults will be traced from Hayward south to the San Juan Bautista area.

1972 PACIFIC SECTION AAPG CONVENTION

Plans for the 1972 Pacific Section AAPG Convention, which is to be held in Bakersfield, is progressing favorably under the able guidance of General Chairman John Carver, Occidental Petroleum Corporation.

The general theme is:

**"PACIFIC COAST GEOLOGY – BASIS FOR
NEW EXPLORATION"**

Chairman Carver stated that many of the convention positions are currently filled but that additional help from associated societies and interested individuals would be appreciated.

CALL FOR PAPERS

Papers to be presented at the Pacific Section AAPG Meetings in Bakersfield, March 9 and 10, 1972, are now being solicited.

Anyone wishing to present a paper contact:

OTTO HACKEL, Program Chairman
P.O. Box 867, Bakersfield, Calif. 93302
Phone (805) 327-8566

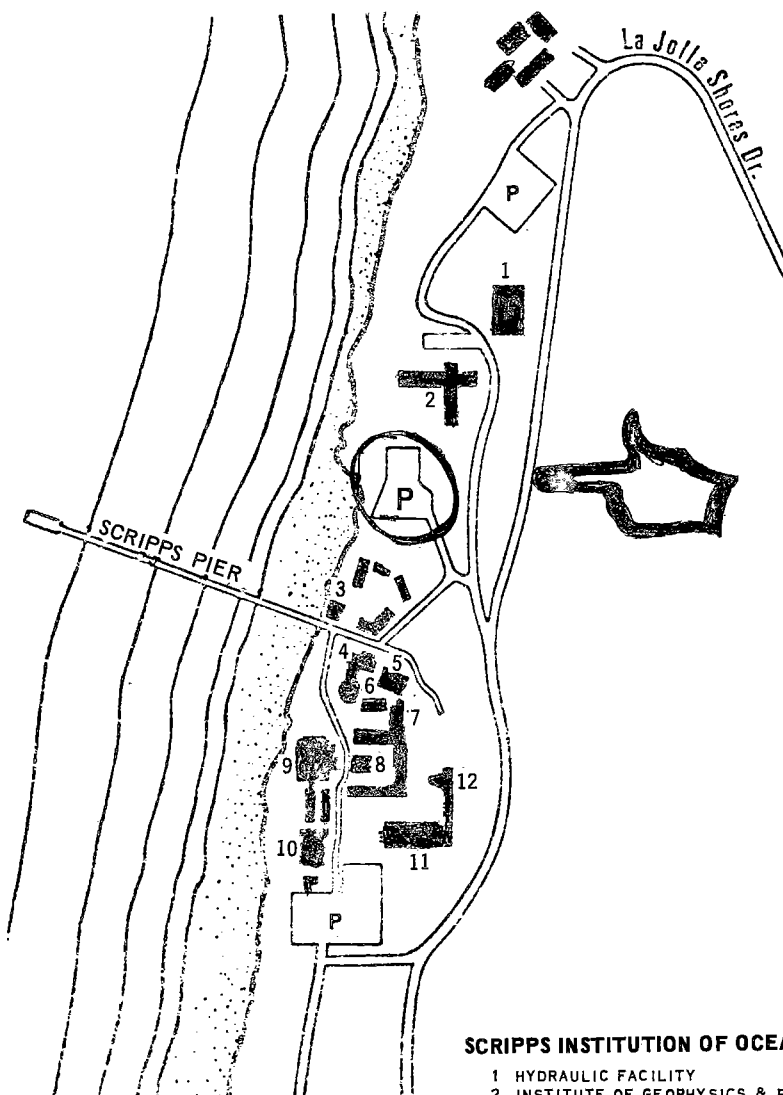
PERSONAL ITEMS

DR. DONALD L. LAMAR is serving as the principal investigator on a contract to Earth Science Research Corporation, Santa Monica, from the National Center for Earthquake Research, U. S. Geological Survey, to monitor microseismicity along the Whittier fault.

JIM SCOTT, development geologist for Union Oil Co. of California in Ventura, California, has recently been transferred to Singapore. Jim's stay in Ventura was a short 8 months. In Singapore he will be involved in development of Union Oil Company's new discoveries off the coast of Borneo.

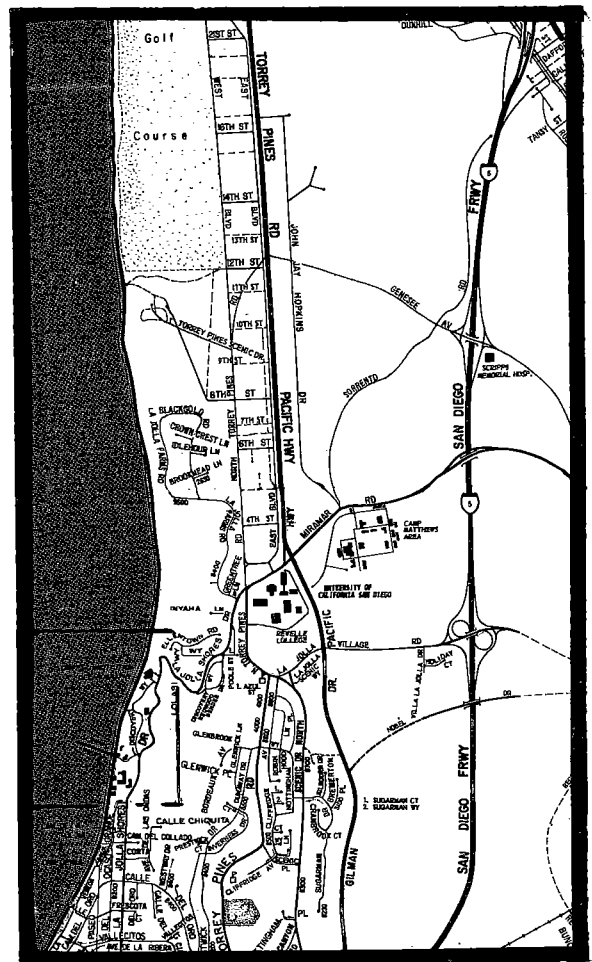
J. R. BOSHARD is now associated with Kiowa Exploration, Inc., 918 Denver Center Building, 1776 Lincoln Street, Denver, Colorado 80203. Telephone (303) 534-2984. Kiowa is engaged in oil and gas exploration and production services.

A. S. HAWLEY announces that for the sake of quiet, tranquility and escape from some of the smog, he has moved his office facilities and living quarter from Sacramento to 502 W. Oak St., P.O. Box 1025, Willows, Calif. 95988. Phone (916) 934-3832.



SCRIPPS INSTITUTION OF OCEANOGRAPHY

- 1 HYDRAULIC FACILITY
- 2 INSTITUTE OF GEOPHYSICS & PLANETARY PHYSICS
- 3 SEAWATER TEST FACILITY
- 4 PHYSIOLOGICAL RESEARCH LAB
- 5 VAUGHAN AQUARIUM-MUSEUM
- 6 EXPERIMENTAL AQUARIUM



- 7 RITTER HALL
- 8 LIBRARY
- 9 SCRIPPS BUILDING & DIRECTOR'S OFFICE
- 10 RESEARCH SUPPORT SHOPS
- 11 SVERDRUP HALL
- 12 SUMNER AUDITORIUM
- P PARKING

ANNOUNCING THE WEST COAST OIL SCOUTS GEOTHERMAL RESOURCES SEMINAR

FRIDAY, MAY 7, 1971
10:00 A.M. to 4:00 P.M.

RODGER YOUNG AUDITORIUM, LOS ANGELES
936 W. Washington Blvd. (Just south and west
from intersection of Harbor and Santa Monica
Freeways) Free Parking.

Registration Fee - \$5.00 (includes lunch)

SPACE WILL BE LIMITED

- PROGRAM -

- 10:00 A.M. GEORGE W. NIELSEN, Chief of the Branch of Minerals, Bureau of Land Management, U.S. Dept. of Interior, Sacramento Office.
 "Briefing of Geothermal Legislation and Regulations"
 WALTER HOLMES, Assistant Manager Land Office, Bureau of Land Management, Riverside, will assist Mr. Nielsen in his presentation.
- 11:00 A.M. NEWELL HUNNICUTT, President, Hunnicutt & Camp Drilling Company.
 "A Professional Driller's Evaluation of Geothermal Problems"
- 12:00 Noon Lunch
- 1:30 P.M. DR. JAMES B. COMBS, Assistant Professor of Geophysics and Planetary Physics, University of California at Riverside.
 "Geothermal Resources Project of the University of California, Riverside"
- 2:30 P.M. DR. GIANCARLO FACCA, International Geothermal Authority and Consultant to the United Nations.
 "Geothermal Possibilities in California"
- 3:30 P.M. The four speakers will form a panel to answer questions from the audience.

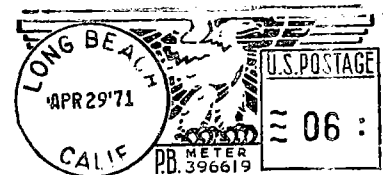
SEND RESERVATION REQUESTS TO:

SAM TATE
Humble Oil & Refining Co.
1800 Avenue of the Stars
Los Angeles, California 90067
Phone: (213) 879-2700

OR

DAYLE RUSHING
Mobil Oil Corp.
P.O. Box 2207
Bakersfield, California 93303
Phone: (805) 327-9101

PACIFIC PETROLEUM GEOLOGIST
PACIFIC SECTION, A.A.P.G.
P.O. BOX 17486, FOY STATION
LOS ANGELES, CALIFORNIA 90017



FIRST CLASS

RICHARD L. HESTER DA
1911 MONTECITO DR.
GLENDALE, CA 91208

NEWSLETTER

of the Pacific Section American Association of Petroleum Geologists

VOLUME 25

SEPTEMBER, 1971

NUMBER 9

From the Editor

We've changed — but don't worry, we're still the same basic loveable group we've always been. In recent years there has been some rather strong suggestions to change the name of the Pacific Petroleum Geologist to something that would have a greater appeal to the many non-petroleum members receiving this publication. This suggestion has been sternly opposed by some who want the PPG primarily oriented toward oil. It is our opinion that the vast majority of you really don't care what the publication is called as long as it serves the purpose of providing news of what's happening of geological interest along the West Coast. Since most of us refer to the "newsletter", we thought it would be appropriate to call the PPG the NEWSLETTER and let it go at that.

"Guest Editorial" will be a new feature. As you know all geologists agree on all subjects and there are only a few problems that need to be solved, so this series may not last long. If you find some problem that stirs your emotions and you feel that action is needed, send your comments to us, we'll clean it up and print it.

We've made some other changes too. The "Calendar" is more streamlined and hopefully easier to use. We will try to keep you posted on coming events two months in advance.

Sectional news will be grouped to include activities, personnel changes and local gossip. We hope this will bring the societies and members closer together.

We've added a "Did You Know" section — filled with obscure bits of information that may be of inestimable value if recalled during a lull in the dinner conversation.

For us old fuddy-duddies we will go back to the 10 and 20 year old issues and review items of interest and recall a few familiar names.

When we discover some new article that pertains to geology or our environment we would like to call it to your attention in "Recommended Reading".

There are other changes we would like to make. A classified section for

"positions available" or "positions wanted" would not only serve the geologic profession along the West Coast but could help defray some of our printing costs and postage.

If we mail via "bulk rate" or second class our postage costs will go from \$110 per issue to less than \$10. We'll get the NEWSLETTER in to Uncle Sam a day or two early so you will get your mail on time.

If you don't like our new style, write us a letter and tell us about it. If you agree with the changes, just smile as you read this and we'll know and understand.

Pacific Section

Please excuse the sparseness of this first issue. Your fledgling editor has learned to never start a new venture during the summer months when it seems that everyone is on vacation. There must be numerous desks piled high with letters waiting for the vacationers return. My letters are in those piles somewhere — isn't this a sad excuse?

Los Angeles

Officers of the LABGS for 1971 are as follows:

President—Orville D. Hart
Standard Oil, La Habra
Vice President—
Fletcher S. McCutcheon
Texaco Inc.
Secretary—Edgar L. Berg
Humble Oil
Treasurer—Robert W. Wagner
Mobil Oil

Orville Hart has been transferred along with 40 other Standard geologists and geophysicists from La Habra to San Francisco (320 Market Street). Fletcher McCutcheon will take over Orville's duties as President as well as Vice President and Program Chairman.

The La Habra transfers include the following—

Angerer, R. H.; Bengtson, C. A.; Brown, R. A.; Bushnell, D. C.; Butler, D. R.; Cassell, J. K.; Diaraj, A. H.;

Gassaway, G. S.; Haga, H.; Hammes, R. R.; Hart, O. D.; Hembree, M. R.; Hendrix, W. E.; Johnson, R. E.; Knapp, R. R.; Kuenzi, L. M.; Kuhn, B. D.; Lane, M. A.; Manly, R. L.; Mero, W. E. Miller, C. D.; Mosier, W. C.; Nagle, H. E.; Newton, R. J.; O'Halloran, D. J.; Padgham, J. B.; Robinson, J. R.; Schnurr, P. E.; Schroeder, J. E.; Simmons, J. I.; Smith, N.; Spotts, J. H.; Sutton, D. W.; Tasker, J. M.; Waterman, D. R.; Wolf, M. W.; Wong, J.; Wright, T. L.; Molander, G. E.; Schroeder, L. G.

Change of address will be printed as they are received.

Coast

As of July 1, the officers of the Coast Geological Society for 1971-72 are:

President—Frank Reynolds
Sun Oil, Ventura
Vice President—
Jack Durrie
Getty Oil, Ventura
Secretary—Nancy Stehle
U.S. Navy Lab., Oxnard
Treasurer—Vernon Hill
Cities Service,
Thousand Oaks

Weekly informal luncheon meetings are held on Thursdays, rotating among local restaurants. Monthly dinner meetings, with speakers, are held normally on the third Tuesday, at the Admirals Table, Ventura. The next dinner will be Tuesday, September 21, 6:00 p.m. cocktails, 7:00 p.m. dinner. Ed Scott, of the Union Oil Research Center, will speak on the VIII World Petroleum Congress held last June in Moscow, and a tour of the Kuban petroleum district in the NW Caucasuses.

* * *

The Earth Science Department of Santa Barbara City College will host the Western Regional Conference of the National Association of Geology Teachers on October 8-10. Included will be workshops, buzz groups, plus displays and demonstrations of hard and software for use in teaching in geologic fields.

(Continued on Page 2)

Coast (continued)

SOCAL has closed their engineering and geological office at Carpinteria.

Gerald Gallear has gone to La Habra; Cal Thompson to Indonesia.

UNION's Ventura and Santa Paula exploration offices have come under Dick Brenan's direction at Santa Fe Springs: Ken Fox has gone to Los Angeles as Manager of Exploration Computer Services; Butch Brown to L.A. as Regional Stratigrapher; Ed Hall to Santa Paula as Senior Geologist for Ventura Basin; Marcus Steadman to Ventura as District Development Geologist.

Bob Herron writes from Chichen Itza, Yucatan. He's photographing famous archaeological sites.

Ed Gribo, of Gulf & Western Indonesia, Inc., couldn't make it to the Spring Picnic 'cause he's working in Singapore.

Tom Bailey is vacationing in Alaska, having taken the Inland Passage by steamer.

* * *

Your correspondent's name is Dick Stewart, not to be confused with another character by that name, working for Union in Los Angeles, who at one time also worked in the Ventura Basin. My address: Union Oil Co. of Calif., 2427 E. Harbor Blvd., Ventura, California 93003.

San Joaquin

The new officers of the San Joaquin Geological Society for 1971-72 are:

President—Harry R. Feder
Consultant

Vice President—
Bruce Robinson
Tenneco

Secretary—Leon Earnest
Getty Oil Co.

Treasurer—Ben Leverett
Consultant

* * *

The Joint Annual Barbecue and Golf Tournament, sponsored by the California Scouts Association and the San Joaquin Geological Society, will be held Friday, September 17, 1971. Luncheon (sandwiches and beer) from 12:00 noon until Socializing beginning with the tapping of the Keg, and Dinner (1" pork chops), served at 6:30 p.m. from Harry Feder's (the Master Chef) kitchen, at the new American Legion building, 2020 H Street.

Those Duffers and semi-pro golfers wishing to play a round of golf at the

Kern River Golf Course are requested to contact —

Mr. Henry Dawson
Humble Oil & Refining Company
1800 Avenue of the Stars
Los Angeles, CA 90067
Telephone: 213-879-2700

for reservations.

* * *

The 47th Annual Meeting of the Pacific Sections of AAPG, SEPM and SEG will convene in Bakersfield, California, March 8-11, 1972. The convention theme is "Pacific Coast Geology — Basis for New Exploration".

* * *

Gardner M. Pittman was recently seen dressed in Mod clothes which he says is the way you should dress for a company paid vacation in Acapulco. (Gardner has recently been honored by Getty Oil Co. as the company's best development geologist for the period 1965-70. Three other awards were given to geologists from other parts of the Country at a managers meeting in Acapulco. Congratulations to Gardner for proving California ain't dead yet.)

* * *

Don Rogers (Ferguson & Bosworth) is out scraping up new members for the San Joaquin Geological Society. When you find a warm one send him to Don Rogers. Go sic 'em Don.

* * *

Consultant Ken Evans and wife made it back from Europe this time without incident. Their last trip ended in a serious auto crash.

* * *

J. Q. Anderson has resigned as vice president of Geothermal Resources. Jack plans to do consulting in oil, gas, and geothermal geology in Seattle.

* * *

Vince Scurry (Brazos) joins the exodus from Bakersfield. Vince will don the 10 gallon Stetson for Dow in Midland, Tex.

* * *

What may look like two salmon swimming up stream, we welcome Gulf Oil's additions to their EXPLORATION department in Bakersfield. Bill Smith from Houston and Bob Nesbitt from Midland, who completes a ten year cycle back to Bakersfield.

* * *

Congratulations to Bud Reid (Occidental) on his appointment by Gov. Reagan to the CALIFORNIA STATE MINING & GEOLOGY BOARD.

* * *

Don Swiers (Occidental) and family, will spend the next three years in Lima, Peru. Don will be the Deputy Resident Manager for Occidental's Peruvian concession.

Northern California

Elected officers of the Northern California Geological Society for 1971-1972 are as follows:

President—Gladys Louke, Consultant
Mill Valley, Calif.

Vice President—
Ernest Rich, Professor
Stanford University

Secretary-Treasurer—
Marshall G. Ayres
Chevron Overseas Petroleum Inc.
San Francisco, Calif.

Mrs. Louke will be moving to Sacramento and will be unable to fill her post as president. The remaining officers of the society will move up and a new secretary-treasurer will be appointed.

* * *

Informal luncheons at Piero's Restaurant (upstairs) on Pine Street near Montgomery are held on Mondays. With Standard's exodus to the Bay Region, a new location may have to be found.

* * *

A frightening trend seems to be developing in regards to elective office and transfer. If you're bored with your present location, get elected to president of your local society.

* * *

Associate editor Bud Porter's report was mailed from England while he and his family were touring Europe. Anyone who can keep tabs on what's going on back home and report this to the Newsletter while on vacation, must be a dedicated geologist.

Alaska

Gene Tripp is to be transferred back from Anchorage to Los Angeles September 1.

Gene reports that of the 200 geologists in Anchorage, only about 25 belong to the Pacific Section. Looks like we need a good recruiter in that neck of the woods.

Northwest

Correspondent will be named soon. We should have some news for the next issue.

Sacramento

Unable to contact correspondent for information.

**PACIFIC SECTION —
AMERICAN ASSOCIATION
PETROLEUM GEOLOGISTS**

EXECUTIVE COMMITTEE

President.....RICHARD L. HESTER
Vice President.....K. B. HALL
Secretary.....ROBERT G. LINDBLOM
Treasurer.....DONALD E. HALLINGER
Past President.....JOHN F. CURRAN
Editor.....STANLEY "ED" KARP

DELEGATES

Los Angeles.....
San Joaquin.....DENNIS SHEA
Coastal.....
Northern California.....
Sacramento.....
Northwest.....
Alaska.....

NEWSLETTER STAFF

Editor.....STANLEY E. KARP
Membership Secretary.....JUDY HUGHES

ASSOCIATE EDITORS

Alaska.....
Coast.....RICHARD L. STEWART
(805) 642-0376 or 963-6404
Los Angeles.....DONALD E. HALLINGER
Northern California.....BUD PORTER
(415) 894-5278

Northwest.....
Sacramento.....
San Joaquin.....LEON J. EARNEST
(805) 399-2961

NEWSLETTER of the Pacific Section —
American Association Petroleum Geologists is published monthly by the Pacific Section.

Material for Publication and requests for previous copies should be addressed to STANLEY E. KARP — GEOLOGY DEPT., BAKERSFIELD COLLEGE, BAKERSFIELD, CALIF. 93305.

Material received by the 15th of each month will be included in the following issue.

CHANGE OF ADDRESS, subscription and membership inquiries should be directed to MEMBERSHIP SECRETARY, PACIFIC SECTION AAPG, P. O. Box 17486, FOY STATION, Los Angeles, Ca. 90017.

20 Years Ago in the PPG

The Los Angeles Forum hosted Pete Gardett, consultant, who discussed "Recent Developments in Rocky Mountain Exploration". Of 1028 exploratory wells (drilled in three years) 212 discoveries or extensions were made. For the same time period, California produced 110 discoveries or extensions from 1565 wells. Production from the California fields, however, was $2\frac{1}{2}$ times that of the Rockies.

Mel Hill, chief geologist for the Western Gulf Oil Company, spoke at the San Joaquin Geological Society on the Fruitvale oil field. "To date, slightly over 50,000,000 barrels of oil have been produced from the field and the current daily rate is approximately 9,500 barrels".

Recommended Reading

THE NATURE OF GEOLOGY — Contemporary readings by Brainert Mears Jr. Van Nostrand Reinhold Co., New York. Paperback.

A collection of readings designed specifically for beginning students of geology and is intended to show that geology is a dynamic, living science. It serves as a welcome reminder why most of us entered into the profession.

GROUND RUPTURE IN THE BALDWIN HILLS — by D. H. Hamilton and R. L. Meehan. "Science", April 23, 1971.

PLATE TECTONICS: THE GEOPHYSICS OF THE EARTH'S SURFACE — Allen L. Hammond. "Science", July 2, 1971.

Did You Know

"They like to go to the toughest places. Geologists like to go where the mountains are highest, valleys are deepest and rocks most interesting." — Roy Neil, NBC, Reporting on the Apollo 15 Moon Walk July 30, 1971.

The National Science Foundation predicts a surplus of Ph.D. scientists in 1980 averaging about 15%. Of the four major groups, physical science fair the best with a predicted surplus of $\frac{1}{2}$ % Life sciences and social sciences will probably have an overage of 8% and 24% respectively. The engineering future looks bleak with a 41% predicted over supply.

That 50% of all collected solid waste is paper and that ashes, sand, dirt and grass take a poor second with 16%. (There's a moral here — send less memo's, save the NEWSLETTER, and cut your grass more often.)

That 59.5% of litter is paper and 20.4% is beverage containers. (Moral— Drink your beer from paper cans).

The largest share of solid waste comes from food production (42.7%), where large parts of the plant and animal is never used. Mining accounts for 31.3%, agriculture 15.7% and industry 3.1% as sources of solid waste. Municipal, commercial and household account for the rest. (. . . and we always thought it was the oil industry that was the culprit.)

San Diego Gas and Electric Company serves over a third of a million natural gas customers. Last year the firm sold over $43\frac{1}{2}$ MCF of natural gas.

CALENDAR for September

S	M	T	W	T	F	S
			1	2	3	4

- (Tentative date) LOS ANGELES BASIN GEOLOGICAL SOCIETY. Dr. James Valentine (U. Cal. Davis) "Seafloor Spreading and the History of Life". Roger Young Center. Noon.
- COAST GEOLOGICAL SOCIETY — Noon Luncheon, Dave's Deli, 512 E. Main, Ventura.
- COAST GEOLOGICAL SOCIETY — Noon Luncheon, Pizza Palace, 2632 E. Main, Ventura.
- COAST GEOLOGICAL SOCIETY — Noon Luncheon, Stanley's Steak House, Santa Paula.
- SAN JOAQUIN GEOLOGICAL SOCIETY — Annual BBQ, Bakersfield. See sectional news for details.
- NORTHERN CALIFORNIA GEOLOGICAL SOCIETY — Dinner Meeting, El Rancho Motel, Millbrae, Calif. Program to be arranged.
- COAST GEOLOGICAL SOCIETY — Ed Scott "VIII World Petroleum Congress" Dinner Meeting. See sectional news for details.
- COAST GEOLOGICAL SOCIETY — Noon Luncheon, El Tecalote, 1961 Thompson, Ventura.
- COAST GEOLOGICAL SOCIETY — Noon Luncheon, Dave's Deli, Ventura.

October

S	M	T	W	T	F	S
					1	2

- BAKERSFIELD COLLEGE — Dr. Robert Kleinpell — "Some Choralogical Interrelation and Interdependence Fossil Groups". Biostratigraphy Seminar, 7:30 p.m., Science and Engineering Building, Room 56.
- (Tentative date) LOS ANGELES BASIN GEOLOGICAL SOCIETY. Dean Morgridge — "Geology and Discovery of Prudhoe Bay Field, Eastern Arctic Slope, Alaska". Roger Young Center.
- SAN JOAQUIN GEOLOGICAL SOCIETY. Assemblyman William Ketchum, Paso Robles, "Pending Legislation of the California State Assembly". American Legion Hall, 2020 "H" Street.
- NORTHERN CALIFORNIA GEOLOGICAL SOCIETY. Regular meeting—Speaker and location to be announced.

Change of Address

John J. August
Wilshire West Plaza, Suite 1114
10880 Wilshire Blvd.
Los Angeles, Cal. 90024

Donald E. Bouse
2205 Wooland Dr.
Bakersfield, Cal. 93304

Fred V. Carrillo
N-11605 Atlantic
Spokane, Wash. 99200

Richard S. Dreessen
3300 S. Washington, #102
Englewood, Col. 80110

Frank A. Exum
1244 Granada Ave.
Casper, Wyo. 82601

Gerald Ganopole
1820 W. Northern Lights
Anchorage, Ak. 99503

E. A. Grihi
Holland Park, D#1
Singapore 11

George L. Guthrie
P.O. Box 4588
Manila, Philippines

Charles D. Foss
1212 Telegraph Rd.
Bakersfield, Cal. 93305

B. C. Jones
Marathon Oil Co.
P.O. Box 2380
Anchorage, Ak. 99501

W. Ray Keller
Signal Oil & Gas Co.
590 Calgary Place 3, S.W.
Calgary 1, Alberta Canada

R. J. Lantz
Organic Fuels U.S.G.S.
345 Middlefield Rd.
Menlo Park, Cal. 94025

Robert I. Levorsen
1763 Indian Valley Rd.
Novato, Cal. 94947

Robert J. McConville
Signal Pet. Co. de Argentina
Talcahuano 736
Buenos Aires, Argentina

Robert O. McCrae
6304 Cochran Dr.
Bakersfield, Cal. 93309

Thane H. McCulloh
Dept. of Geology and Geophysics
University of Minnesota
Minneapolis, Minn. 55455

Patrick D. McCullough
17850 Winterberry St.
Fountain Valley, Cal. 92708

Fred H. Nicolai
c/o Texaco, Inc.
3350 Wilshire Blvd.
Los Angeles, Cal. 90005

Duncan V. Patty
Tejon Ranch Co.
P.O. Box 1000
Lebec, Cal. 93243

Bruce Robinson, Jr.
3219 Christmas Tree Lane
Bakersfield, Cal. 93306

George H. Rudkin
Marathon Oil Co.
2300 West Loop
Houston, Texas 77001

Hampton Smith
8030 Grand Ave.
Yucca Valley, Cal. 92284

R. L. Stewart
Union Oil Co. of Cal.
2427 E. Harbor Blvd.
Ventura, Cal. 93303

David E. Wright
3819 Purdue Dr.
Bakersfield, Cal. 93306

New Members

Frederick S. Crafts
3883 Union Ave., Apt. 6
Bakersfield, Cal. 93305

James H. Elison
2701 Christmas Tree Lane
Bakersfield, Cal. 93306

Giancarlo Facco
1023 Timothy Lane
Lafayette, Cal. 94549

Richard A. Ganong
P.O. Box 2491
Bakersfield, Cal. 93303

Dan Gilbert
1042 Burlington Ct.
Walnut Creek, Cal. 94598

Bob Greider
70 Corte Del Baya
Larkspur, Cal. 94939

Thomas M. Hamilton
490-C Oak Tree Lane
Thousand Oaks, Cal. 91360

Vernon I. Hill, Jr.
1847 Nowak Ave.
Thousand Oaks, Cal. 91360

Walter W. Kessler
805 A St.
Taft, Cal. 93268

Wm. H. Myers
7453 W. Manchester Ave.
Los Angeles, Cal. 90045

Michael H. Paine
1538 Franklin, Apt. N
Santa Monica, Cal. 90404

John G. Vedder
285 Golden Oak Dr.
Portola Valley, Cal. 94025

Eugene B. Viloni
4408 La Mirada
Bakersfield, Cal. 93309

NEWSLETTER

Pacific Section A.A.P.G.

P.O. Box 17486 Foy Station
Los Angeles, California 90017



CALIFORNIA SECTION

THE AMERICAN INSTITUTE OF PROFESSIONAL GEOLOGISTS

P.O. BOX 1832 — BAKERSFIELD, CALIFORNIA 93303

1971 SEVENTH ANNUAL MEETING

CO-SPONSORED BY CALIFORNIA SECTION - AMERICAN INSTITUTE OF PLANNERS.

PLACE: El Rancho Motel 1100 El Camino Real, Millbrae, California

TIME: September 18, 1971, All Day

THEME: PEOPLE, CITIES AND GEOLOGISTS

This meeting will provide an opportunity for planners, engineers and geologists to exchange their views and discuss problems of mutual concern. Please invite local government officials and engineers concerned with urban land and development problems to attend and participate. Plan to contribute your own ideas. Luncheon and dinner speakers will be both stimulating and entertaining. Wives are welcome to all sessions.

TENTATIVE PROGRAM

- 11:00 a.m. Registration
- 12 Noon Luncheon and Speaker - "Current Legislation Affecting Geologists"
Wesley G. Bruer, Chief, California Div. of Mines & Geology
- 1:30 - 4:30 p.m. Afternoon Session - "People and Geologists"
California Regional Planning and the Role of Geology
John Blaney, Planning Consultant
Case Histories Related to Geology and Land Use
F. Beach Leighton, Consulting Geologist
Recovery of Petroleum in the Urban Environment as Viewed by the Professional Geologist
Arthur O. Spaulding, Petroleum Coordinator, City of Los Angeles
- 4:30 p.m. Business Meeting - Please advise Bruce Barron of any special business to be brought before this meeting.
- 6:00 - 7:00 p.m. No-Host Happy Hour
- 7:00 p.m. Dinner and Speaker - "San Francisco Bay Area HUD - USGS Planning Study"
Robert E. Wallace, Geologist, USGS

Coupon to clip and mail to: Mr. Charles M. Cross, 355 North Calif. Ave., Palo Alto, Ca. 94301

- ☐ I would be interested in a half-day Field Trip on Sunday morning, Sept. 9th, to nearby sites illustrating useful applications of geology and planning.
- ☐ I am not a member of A.I.P.G. but would like to receive the Announcement and Registration Card for the El Rancho Motel when these are sent to the regular mailing list.

Name _____ Street _____

City _____ State _____ Zip _____

BENNIE TROXEL and GARY MELIKIAN

The following letter was received by members of the Executive Committee from President Bennie Troxel:

July 8, 1971

Executive Committee and Chairmen:
California Section, AIPG

Gentlemen:

This is to announce my departure from California for one year to accept a one-year appointment as Editor for the Geological Society of America in Boulder, Colorado. I have appreciated the opportunity to work with you and regret that I have been unable to do more for the Section this year. I feel fortunate that so many members are so eager to help in AIPG matters. It is a good sign of a healthy organization.

Gary Melikian has agreed to operate in my behalf and I hereby designate him my proxy for any further meetings of the Executive Committee. I shall keep in touch with Section activities by mail.

Thanks to the capable group of Adams, Beatty and Cross, the Annual Meeting plans are well under way.

Thanks to the Nominating Committee a good slate for next year is being sent out for balloting.

Please help Gary Melikian and Chuck Yelverton with legislative matters. Gary would like your suggestions for agenda items for the Executive meeting on September 18, and the Annual Business meeting. I urge you to attend the annual meeting.

Sincerely,

B. W. Troxel

SECOND EXECUTIVE COMMITTEE MEETING, May 28, 1971

The meeting commenced at 1:00 p.m., Hacienda Hotel, El Segundo, with the following members and guests present:

E. W. Adams	J. J. O'Brien
H. T. Anderson	T. Off
B. M. Barron	A. O. Spaulding
J. W. Bedford	H. E. Stark
R. Erikson	B. W. Troxel
C. F. Green	L. F. Villanueva
G. E. Melikian	

The nominating committee, consisting of John Manning (chairman), E. Danehy, C. Gray, V. Jones, and R. Herron, submitted the following slate (except for President and 1st Vice President which we submitted later), which was accepted by the Executive Committee. A ballot will be mailed shortly.

President:	Theodore Off	AIPG 619
First Vice President:	William H. Park	AIPG 594
Second Vice President:	Gordon B. Oakeshott	AIPG 45
Secretary-Treasurer:	Gardner M. Pittman	AIPG 529

Executive Committeemen:

Sacramento District	Bruce D. Brooks	AIPG 482
Bay Area District:	John H. Feth	AIPG 1560
San Joaquin District:	Charles F. Green	AIPG 1853
L. A. County District:	Wm. A. Adent	AIPG 306
	Joseph H. Birman	AIPG 316
So. Counties District:	Charles M. Mallette	AIPG 341
Coastal District:	Howard E. Stark	AIPG 499

Elmo Adams reported for the Annual Meeting Committee, which consists of C. Cross (Chairman), W. Beatty, and E. Adams. The results of their efforts are summarized in the announcement of the Annual Meeting elsewhere in this newsletter. Members are encouraged to attend and bring guests.

Legislation, naturally, was the topic of considerable discussion. Troxel reported that the contractor for legislative services had provided very little service this year (and since May 28 has provided none). Please advise C. A. Yelverton, chairman of the Section's legislative committee, how you feel about individual bills.

Howard Anderson (Advisory Board delegate) reported on the last National meeting, the principal item of discussion being the request from employers on employment data.

Other matters discussed at the California Section meeting were public relations, the requirement of a masters degree in geology for AIPG membership, the need for more continuity of membership in the Executive Committee (rotation of chairs?) and the need for more lead time in identity of advisory board delegates so that California delegates might be elected to the National Executive Committee as Advisory Board Representatives.

B. W. Troxel

REPORT - CAL SECTION - AIPG - COMMITTEE ON LEGISLATION AND STATUTORY REGULATIONS - JULY, 1971

During the 1971 legislative session of the State Legislature, beginning in January, 1971, approximately 100 bills were introduced that in varying degrees affect the geological profession in California. A large number of these bills were

introduced for the purpose of restricting or prohibiting oil drilling and exploratory work in various coastal zones of the state.

Seven bills were filed by legislators which if enacted would create a California Coastal Zone Conservation and Development Authority and provide for regulation of coastal area development. Each of these bills varies somewhat from the others but their intent is the same.

Fifteen bills were introduced into the legislature concerning earthquake and seismic hazards, repairs, insurance, building design, etc. Practically all of these bills were hurriedly prepared and filed immediately following the February 9, 1971 San Fernando Valley earthquake.

Proposed legislation dealing with environmental problems is encompassed within nine bills filed by various legislators. Provisions of these bills would establish a State Environmental Quality Board, regional boards and require local governments to comply by 1975.

Changes or reduction of the present oil depletion and discovery allowances granted to oil operators is covered in eight bills before the legislature. Numerous other bills dealing with scientific manpower, lode claims, lease of state lands, pooling of acreage for geothermal development and waste disposal are also pending before the legislature.

A few of the proposed legislative acts warrant further discussion as follows:

AB 1176 (Ketchum) requiring geological reports on subdivisions was filed with strong support from all of the geological societies in the state and strongly supported by the State Geologist's office. In its initial form the bill also had tacit approval from the Building Industry and the Real Estate interests.

Unfortunately, the League of California Cities insisted upon amendments which ultimately led to demise of the bill in the Public Utilities and Commerce Committees. Mr. Priolo, Chairman of that Committee opposed the bill and favored one of his own (AB 2421). Ultimately, AB 2421 was also defeated.

SB 298 (Rodda) was a re-submittal of a bill which had been filed in 1967 (SB 1210) and 1970 (SB 294) regarding geological reports on subdivisions. This bill was temporarily held until after AB 1176 was defeated and then reactivated. The current version of SB 298, by amendment, incorporates the essential language of AB 1176. The Legislation and Statutory Regulations Committee expects to actively endorse this bill and work for its adoption.

AB 1445 (Ketchum) At last report this bill, concerning diminution of educational requirements for geological registration, had passed the Assembly and the Business and Professions Committee of the Senate and awaiting action by the Senate Finance Committee and the Senate floor vote.

Your Committee chairman and some members of this Committee has strongly opposed this bill since its inception. I still believe that it is bad legislation and will serve to "open the door" to others who are not qualified to become registered as geologists, even less so than the geophysicists for which it is intended.

In regards to services rendered by our legislative consulting service Desmond-Shirley & Associates of Sacramento, I feel that some positive steps must be taken to assure the future committee chairman and the Executive Board that proper services will be rendered. There has been a rather lackadaisical attitude on the part of the firm to

provide us with up-to-date information and analysis of bills in the legislature. If the service to be rendered consists only of securing copies of bills from the legislative bill room and mailing to the organization, then I suggest that they are grossly overpaid. Bills from their offices have not been received for a period of a month or more after they were filed. In many cases your committee chairman learned of bills only when they had been scheduled for hearings, or by direct contact with the legislature or acquaintances.

I strongly suggest that the Executive Committee consider discontinuing the services of Desmond-Shirley unless adequate service can and is assured. It takes time to review and analyze these hundreds of bills and they must be provided to the Committee promptly in order that proper and timely action can be taken.

Perhaps the Executive Committee should consider the possibility of appointing a special legislative bill advocate from among the membership in Sacramento to acquire the bills and transmit them to the proper Committee Chairman or Cal Section Chairman for distribution.

Attached hereto is a brief, annotated summary of some 70 bills reviewed during this year.

Respectfully submitted,

CHARLES A YELVERTON, CPG 1434
Chairman, Legislation and Statutory
Regulations Committee

(Ed. Note: Since the above was written Desmond-Shirley legislative service has been discontinued.)

LEGISLATIVE

AB

AB 16 (Wilson et al (3) Creates California Coastal Zone Conservation and Development Authority. Creates five regional coastal zone boards. Provides for regulation of use of coastal zone. See SB 1354 Wedworth.

AB 21 (Burton, Brown & Murphy) Limits oil and gas depletion allowance.

AB 58 (Sieroty et al (8)) Submission to voters at 1972 general election - State Beaches and Coastline Preservation Bond Act.

AB 75 (Dent & Greene) Provides for issuance of State bonds to aid in repairing earthquake damage.

AB 622 (Maddy) Arrangement to register as geologist a person with six units of geology, 15 years as registered petroleum engineer, 25 years of practice as a geologist, and passes an examination. See also AB 2878.

AB 786 (Schabarum & Cullen) Reduces geologist on Board of Registration from 6 to 5 and increases public members from 1 to 2.

AB 473 (Bagley, Z'berg, Wilson, McCarthy) Creates state environmental fund.

AB 907 (Cory) Depletion allowances for oil and gas wells under the Personal Income Tax Law.

AB 985 (Z'berg et al) Environmental defense actions.

AB 1056 (Z'berg et al (6) Establishes Environmental Quality Board. Must, by 1975, develop conservation and development plan for natural resources. Abolishes 8 existing State Boards and local districts.

AB 1169 (Seeley) Additional recording fee for additional indexing and referencing relative to mining claims.

AB 1176 (Ketchum) Requires geologic reports as well as soil reports relating to subdivisions. Defeated.

AB 1327 (Fenton (25)) Provides for earthquake insurance.

AB 1445 (Ketchum) Circumstances under which person not meeting specified requirements shall be issued certificate of registration as geologists. Due for Senate Finance Committee hearing.

AB 1611 (Lewis) Requires the Department of Public Works to conduct thorough investigation of the geologic characteristics of highway construction zone in vicinity of City of San Fernando's February 9th earthquake. Prohibits permanent reconstruction until investigation is complete. See AB 1948.

AB 1619 (Vasconcellos) Creation of joint cities - county environmental councils.

AB 1753 (Cline) Creates Office of Earthquake Safety and Research. See SB 530 - Carrell.

AB 1788 (Knox) Enacts the "California Archaeological Survey Act". All state agencies to submit to the survey plans for public work projects intended for any state lands.

AB 1948 (Quimby) Same as AB 1611.

AB 2036 (Gonsalves) Deletes provisions of certain oil and gas interests.

AB 2162 (Seeley) Release of geothermal well data to public and filing with the state as D.C.G. requires on oil well.

AB 2184 (Beverly) Formula for treatment of mineral production payments; repeals discovery depletion provision.

AB 2210 (Greene) Provides that buildings which do not comply with wind and earthquake protection standards be posted with a sign which indicates such noncompliance.

AB 2421 (Priolo) Requires "fault line hazards" element in general plans. Requires DMG to designate fault line hazard zones. Defeated.

AB 2499 (Briggs) Earthquake coverage as basic peril insured against under California Standard Form Fire Insurance Policy and California Standard Form of County Fire Insurance Policy.

AB 2551 (Moretti) Creates State Environmental Quality Control Board. Abolishes State Air Resources Board and State Water Resources Control Board. See also AB 1056, SB 1057.

AB 2644 (Lanterman) Requires highway spans in all faulted areas to be constructed with structural steel.

AB 2805 (McAlister) Requires geological report be given subsequent bona fide purchasers. Requires copy be attached to property deed, and to be separate document from Real Estate Commissioners public report. See also SB 298.

AB 2856 (Murphy) Enacts "California Comprehensive Ocean Area Plan."

AB 2878 (MacGillivray) Authorizes issuance of certificate in specialty of engineering geology without examination to designate persons, pursuant to certain requirements. See AB 622, AB 1445.

AB 2928 (Powers) Requires notice posted on lode claim to include description of claim in surveyed areas the quarter section, township and range.

AB 2967 (Meade) Creates Office of Scientific Manpower - to provide grants to unemployed scientists, as defined.

AB 2987 (Z'berg, Belotti, Chappie, Oroley (Sen. Teale) Creates State Board of Registration for Foresters and provides for licensing.

SB 58 (Lagomarsino) Directs Resources Agency to contract for a study of Santa Barbara Channel oil seeps.

SB 179 (Bradley & Carpenter) Reduces depletion allowance for oil and gas to 22%.

SB 198 State shall not permit conduct of geologic or geophysical surveys on tide lands. Cancels other permits.

SB 210 (Nejedley) Prohibits oil and gas exploration or extraction in tide and submerged lands in San Francisco Bay - Sacramento-San Joaquin Delta.

SB 218 (Harmer & Mills) Creates California Archaeological Commission. (See AB 1788, Knox.)

SB 227 (Lagomarsino) Suspension or revocation of professional licenses.

SB 287 (Lagomarsino) Removes three-mile zone (402,000 acres) around Santa Barbara Channel Islands from leasable lands for oil and gas extraction.

SB 298 (Rodda) Regarding geologic abatements on subdivisions. Withdrawn in favor of AB 1176. Re-activated since AB 1176 was defeated. Amended-Senate, June 24, 1971.

SB 351 (Alquist) Requires seismic safety element in city and county general plans.

SB 352 (Alquist) Establishes earthquake resistance standards for hospitals. Department General Services to inspect and regulate.

SB 436 (Coombs) Includes earthquake coverage within definition of basic property insurance under FAIR plan provisions.

SB 479 (Alquist) Extends existing requirements for geological, engineering, and other investigations of school sites to additions to present school buildings.

SB 530 (Carrell) Establishes Earthquake Office in the office of the Governor. See AB 1753 - Cline.

SB 554 (Dills) Pooling of gas and oil acreage.

SB 560 (Lagomarsino) Authorizes Director, Department of Conservation to fix boundaries of oil and gas districts.

SB 597 (Behr) Prohibits State Lands Comm. from letting a lease on tidelands unless oil and gas is being drained off to adjacent non-state land.

SB 606 (Deukmejian) Prison training and licensing.

SB 682 (Coombs et al (30)) Requires Department of Public Works to investigate geologic characteristics at freeway zone of San Fernando earthquake. See AB 1611, 1948 also.

SB 716 (Lagomarsino) Permits pooling of acreage to develop geothermal resources.

SB 834 (Alquist & Way) Appropriates \$100,000 to develop pilot study to recover power, minerals, and water from geothermal resources.

SB 992 (Deukmejian) Solid waste disposal.

SB 1047 (Marks) Creates California Conservation & Development Commission to regulate all activities of any governmental agency in this state which would have significant impact upon the environment. See AB 1056 & 2551.

SB 1057 (Alquist) Requires building department of every city or county to maintain official copy of plans and specifications of specified buildings.

SB 1208 (Alquist) Directs State Geologist to delineate 1/4 mile wide zone along San Andreas and other active faults. Requires State Geologist approval of real estate developments.

SB 1257 (Zenovich) Makes it mandatory for general plan to contain a safety element containing specified features. Adds socioeconomic element. Requires geologic mapping of hazards.

SB 1326 (Deukmejian) Requires oil and gas production to be conducted on tracts of land, as defined, under specified unit agreement approved by the State Oil and Gas Supervisor.

SB 1354 (Wedworth) Enacts the "California Coastal Resources Control Act." See AB 16-Witson, SB 1483-Grunsky, SB 1555, SB 1619.

SB 1374 (Alquist) Establishes earthquake strong-motion instrumentation program.

SB 1460 (Stevens) Limits use of double-declining balance and sum-of-the-years digits methods of depreciation with respect to real estate; permits five year amortization for coal mine safety equipment.

SB 1483 (Grunsky, Collier & Lagomarsino) Creates California Coastal Zone Protection and Development Commission, and regulation of use of coastal zone. See also SB 1354, Wedworth; AB 16, Wilson and SB 1555, SB 1619.

SB 1521 (Nejedly) Requires Insurance Commissioner to study methods to provide state-operated system of catastrophe insurance and to report no later than 5th legislative day of 1973 Regular Session.

SB 1555 (Alquist et al (8)) Enacts "California Coastal Zone Conservation Act of 1971". Provides for development and submission to the Legislature of such a plan. See SB 1354, 1483, and AB 16, SB 1619.

SB 1619 (Dills) Enacts California Coastal Resources Management Act of 1971 which regulates resources in the defined coastal zone. See SB 1354, 1483, AB 16.

CALIFORNIA SECTION

THE AMERICAN INSTITUTE OF PROFESSIONAL GEOLOGISTS

P.O. BOX 1832 - BAKERSFIELD, CALIFORNIA 93303

*1911 Markete Avenue
Glendale, California.
91205*

RICHARD L. HESTER
PAULEY PETROLEUM CO.
10000 SANTA MONICA BLVD
LOS ANGELES, CAL 90067

NEWSLETTER

of the Pacific Section

American Association of Petroleum Geologists

VOLUME 25

OCTOBER, 1971

NUMBER 10

GUEST EDITORIAL . . .

During this 1971-72 term, your Pacific Section Executive Committee will maintain the close watch necessary to keep properly apprised of State Legislation which could involve our profession. A liaison officer has been appointed to coordinate the Pacific Section AAPG and Pacific Section AIPG efforts in this time-consuming but necessary work. The basic point here is to remove duplication of effort to an irreducible minimum.

The Section wishes to balance other intersociety functions in the same manner. Members of the SEG and SEPM who are also AAPG Pacific Section members will be asked to help complement mutual efforts wherever possible. These dual membership personnel are being asked to help maintain direct contacts with fellow societies. Invitations will be sent out to the AIPG, SPM, SEG local officers to attend or send delegates to the Pacific Section Executive Committee meetings.

PSEC meetings will also continue to be held as often as possible in areas of the local member societies on the days they have their monthly dinner meetings. All interested members of these societies are welcome to attend the official PSEC meetings.

This year's PSEC believes the Pacific Section Dues can be held at the present level for the foreseeable future. Our main objective is to continue injecting worthwhile activities and maintain a higher interest level in them.

Foremost in the activity list is the necessity to continue our Pacific Section Newsletter as a viable, interesting and readable document. For this we need everyone's help. Please maintain contact. Help the Newsletter report news of personnel changes, moves; our interest in each other's welfare is the prime motivation for the Newsletter.

The Executive Committee will also move to integrate as much new talent into the running of the organization as possible. There have been times in the dim past when the Committee has probably been justly accused of being run by a "clique" of hard-nosed old-

timers who ran a "closed shop."

Nothing could be further from the intentions of the present Committee. Autonomy of action of member societies, close work and hopefully, close agreement with fellow societies, new blood, new ideas and a rejuvenated Newsletter is our goal. Its high time the Section retrieved its sense of humor.

RICHARD L. HESTER,

President

Pacific Section, AAPG 1971-72

San Joaquin

Vince Scurry reports that things are "fair to midland." He is enjoying his new home (a geological paradise) and soon he'll be able to recognize limestone without the acid bottle. New address is 2509 Humble Ave., Midland, Texas 79701. (915) 683-5713.

Coast

THE COAST SOCIETY SUMMER BARBECUE was held Saturday, August 21, Lagomarsino Ranch, near Ojai. Sixty-three people and one dog participated in bocci ball, horseshoes, shuffleboard, swimming, and in the consumption of ten cases of beer. The dinner was great, including extra thick steaks, which resulted in a slight deficit. Accompanying dinner were several jugs of "Pete Hall's private reserve, estate bottled, barrel aged, hand-stomped, Ojai Valley Zinfandel, etc."

* * *

The Coast Society Christmas Dance will be held Friday, December 17, at the Ventura Women's Club. More details as they become available.

Gene Templeton has moved to Bedford, VA. and is teaching. Bedford is

(Continued on Page 2)



OFFICERS OF THE SAN JOAQUIN GEOLOGICAL SOCIETY making plans to host the Pacific Section Convention in 1972. SEATED—Harry Feder, Consultant, President; Bruce Robinson Jr., Tenneco, Vice-President. STANDING—Leon J. Earnest, Getty, Secretary; Otto Hackel, Hornkohl Lab., AAPG Delegate; Ben Leverett, Consultant, Treasurer.

Coast (continued)
in the Foothills of the Blue Ridge Mts.,
so there's no lack of interesting Ge-
ology. Address: 1005 Ashland Ave.,
Bedford, VA 24523.

* * *

Let's welcome Jack Turner of CON-
OCO. Jack is a recent graduate of the
University of Wisconsin, and is in
Ventura for training.

* * *

The Mexican restaurant where we
have our lunch meetings has changed
hands. It's now called "Casa de Soria"
having formerly been called "el Teco-
lote". The address is the same.

Los Angeles

A.A.P.G. CONTINUING EDUCATION PROGRAM

The last lecture under this program
was presented in May 1969 to a group
of 39. This lecture series was initiated
in February 1968 with 137 in attend-
ance. It would appear continuing edu-
cation had reached a saturation point.
The Continuing Education Committee
believes that the two year drought
should have renewed our thirst for
knowledge and is, therefore, proposing
a Fall lecture to be given in Los An-
geles.

Previous lectures have covered Stra-
tigraphy (3), Structure (1), Origin
and Migration of Petroleum (1) and
Economics (1). The exploration tool of
geophysics has not been presented. As
objectives become deeper and more
obscure, a working knowledge of geo-
physical techniques, their application
and interpretation are vital to the ex-
ploration geologist who expects to suc-
ceed in his profession. Therefore, the
Committee has tentatively arranged for
Milton B. Dobrin, past-president of the
S.E.G., to lecture on "Geophysics for
Exploration Geologists" on October 19,
20, 21 and 22, 1971, Tuesday, Wednes-
day, Thursday and Friday, from 3:00
to 6:00 P.M.

Confirmation of this lecture can only
be made if sufficient attendance is indi-
cated so as to cover expenses at a
reasonable cost per person. Registration
fee is expected to be about \$18.50
(\$6.00 for university registered stu-
dents). This works out at \$1.55 per
hour; at that price a lecture by a
foremost exploration geophysicist is a
real bargain!

Dr. Milton B. Dobrin received his
B.S. at Massachusetts Institute of Tech-
nology in 1936, his M.S. at the Uni-
versity of Pittsburgh in 1941 and his

Ph.D. at Columbia University in 1950.

Dr. Dobrin was Editor of Geophysics
from 1953-55 and First Vice President
of both the Dallas Geophysical Society
and the Canadian S.E.G. He is author
of "Introduction to Geophysical Pros-
pecting", now in its second edition.

Very briefly the course will cover:

- I. SEISMIC REFLECTION
 - A. Propagation of seismic waves
through earth
 - B. Stratigraphic trap detection
by seismic method
 - C. Structural studies by reflec-
tion
 - D. Other information obtainable
by reflection
- II. SEISMIC REFRACTION
- III. GRAVITY
 - A. Densities of rocks
 - B. Ambiguity of gravity data
 - C. Precision of gravity data
 - D. Application to geological prob-
lems
- IV. MAGNETICS
 - A. Susceptibility of basement
rocks and sedimentary rocks
 - B. Precision of magnetic data
 - C. Significance of magnetic maps
 - D. Application to geological prob-
lems
- V. ELECTRICAL
- VI. SEISMIC DATA ACQUISITION
—LAND
- VII. SEISMIC DATA ACQUISITION
—OFFSHORE
- VIII. GRAVITY—OFFSHORE
 - A. Bottom recording
 - B. Shipborne recording
- IX. POSITIONING
- X. SEISMIC DATA PROCESSING
- XI. SPECIAL TOPICS
 - A. Choice of tools
 - B. Trend analysis
 - C. Location of stratigraphic
traps
 - D. Intergration of different sur-
veys
 - E. Economics

For complete information contact:
A.A.P.G. Continuing Education
Program

c/o Anthony E. L. Morris
Hazzard, Morris & Associates
515 Petroleum Building
714 West Olympic Boulevard
Los Angeles, California 90015

DID YOU KNOW . . .

San Diego Gas and Electric Company
serves 337,140 residential customers
and 29,541 commercial firms. Last year
the company sold 43,596 Mmcf. (This
should set the record straight and cor-
rect the error in the September issue.
All that fuss just because we left out
an M.)

Pacific Section

Officers for 1971-72 of the Pacific
Section of the Society of Economic
Paleontologists and Mineralogists are
as follows:

President: James C. Taylor
Shell Oil Company
P.O. Box 3397
Terminal Annex
Los Angeles
California 90051

Vice President:
Roderick D. McLennan
Union Oil Company
of California
9645 South Santa Fe
Springs Road
Santa Fe Springs
California 90670

Secretary: Sonja B. Mulvane
Shell Oil Company
P.O. Box 3397
Terminal Annex
Los Angeles
California 90051

Treasurer: Keith E. Green
Cypress Junior College
9200 Valley View
Cypress
California 90630

* * *

The Pacific Section SEPM, 1971
Field Trip and dinner meeting will take
place on Friday evening, October 22
and Saturday, October 23. On the field
trip we will see a wide variety of
Miocene and Pliocene sediments, in-
cluding the San Onofre breccia, Mon-
terey shale, and very well exposed sub-
marine channels within the Capistrano
formation at Dana Cove and San Cle-
mente. Lively discussions concerning
the genesis of these channel deposits
may be expected. Stops will be made at
Newport Lagoon, Laguna Beach, Salt
Creek, Dana Point, Dana Cove, and
San Clemente.

The dinner meeting will be held at
7:30 PM, Friday, October 22. The lo-
cation of the dinner will be announced
later. Dr. Bill Normark, now teaching
at the University of Minnesota, will
speak about recent investigations into
modern submarine fan deposits and
their relationships to late Miocene
channel deposits as seen in outcrop.

Ted Bergen (Shell) (213) 482-3131
is field trip chairman and should be
contacted for further information.

Transportation on the field trip will
be by buses. Box lunches and bever-
ages will be provided.

Please make your own hotel reser-
vations if you desire them.

PACIFIC SECTION —
AMERICAN ASSOCIATION
PETROLEUM GEOLOGISTS
EXECUTIVE COMMITTEE

President.....RICHARD L. HESTER
(213) 249-9187
Vice President.....K. B. HALL
(805) 965-8055
Secretary.....ROBERT G. LINDBLOM
(213) 295-6361
Treasurer.....DONALD E. HALLINGER
(213) 689-3649
Past President.....JOHN F. CURRAN
(805) 965-8055
Editor.....STANLEY "ED" KARP
(805) 871-5346

DELEGATES

Los Angeles.....DENNIS SHEA
San Joaquin.....
Coastal.....
Northern California.....
Sacramento.....
Northwest.....
Alaska.....

NEWSLETTER STAFF

Editor.....STANLEY E. KARP
Membership Secretary.....JUDY HUGHES
ASSOCIATE EDITORS

Alaska.....
Coast.....RICHARD L. STEWART
(805) 642-0376 or 963-6404
Los Angeles.....DONALD E. HALLINGER
(213) 689-3649
Northern California.....BUD PORTER
(415) 894-5278
Northwest.....
Sacramento.....
San Joaquin.....LEON J. EARNEST
(805) 399-2961

Recommended Reading.....LUCY E. BIRDSALL
NEWSLETTER of the Pacific Section—American
Association Petroleum Geologists is published
monthly by the Pacific Section.

Material for Publication and requests for previous
copies should be addressed to STANLEY E.
KARP—GEOLOGY DEPT., BAKERSFIELD
COLLEGE, BAKERSFIELD, CALIF. 93305.
Material received by the 15th of each month will
be included in the following issue.

CHANGE OF ADDRESS, subscription and
membership inquiries should be directed to
MEMBERSHIP SECRETARY, PACIFIC
SECTION AAPG, P. O. Box 17486, FOY
STATION, Los Angeles, Ca. 90017.

even poetic qualities; it tripped easily from the tongue; and it could be written or spoken in far less time than "the newsletter". Moreover, when you say "Newsletter", where are you, if not among a herd of "newsletters" of trade associations, house organs, and what not else have you? "PPG" was distinctive. To make "newsletter" distinctive, it is necessary to add "of the Pacific Section of the American Association of Petroleum Geologists"—thereby lengthening the name out of all proportion to the need. AND you have introduced that word from which I sense that you—along with a number of others—are either shying away from or trying to minimize: "Petroleum".

But let's face up to it. Just because of some unfortunate, but limited happenings with respect to petroleum and "the environment", petroleum geologists should not feel their name dishonored and seek refuge (or camouflage) under some other cognomen. I submit that a good petroleum geologist is an exceptionally able citizen, at once a specialist and a generalist—a breed of which we have all too few. He knows not only structural and stratigraphic geology, geophysics and paleontology, petrology and fluid mechanics, but he also knows economics and diplomacy and survival techniques! Should such a man consider abandoning or downgrading an honored name? Is it not more seemly that such a man, or group of men, "stay in there pitching", rather than walking away after one disastrous inning?

Enough of that—I have strayed from my comment which is simply (and perhaps bluntly—if so please forgive me) that I don't like the new name, nor do I like the reasons given for the change!

But under any name, I shall read the pages of your efforts for the Pacific Section as avidly as ever. Best wishes for a successful year.

Cordially yours,
Ian Campbell

Spanking duly noted and accepted. The name change was not intended to reflect displeasure with previous staff performance, but only to keep pace with the rapid changes now occurring in the petroleum industry and geologic profession.

* * *

Congratulations on the September issue of the "Newsletter" of the Pacific Section AAPG. I like the new format but, better yet, you've added some style to the writing. Hang in there!

Regards,
Wesley G. Bruer
State Geologist

(Continued on Page Four)

CALENDAR for October

S	M	T	W	T	F	S
					1	2

4. BAKERSFIELD COLLEGE — Dr. Robert Kleinpell — "Some Chorological Interrelation and Interdependence Fossil Groups". Biostratigraphy Seminar, 7:30 p.m., Science and Engineering Building, Room 56.

6. (Tentative date) LOS ANGELES BASIN GEOLOGICAL SOCIETY. Dean Morgridge — "Geology and Discovery of Prudhoe Bay Field, Eastern Arctic Slope, Alaska". Roger Young Center.

8-10 SANTA BARBARA CITY COLLEGE — National Association of Geology Teachers. For Western Section Annual meeting.

12. SAN JOAQUIN GEOLOGICAL SOCIETY. Assemblyman William Ketchum, Paso Robles, "Pending Legislation of the California State Assembly". American Legion Hall, 2020 "H" Street.

15. NORTHERN CALIFORNIA GEOLOGICAL SOCIETY. Regular meeting—Speaker and location to be announced.

19. COAST GEOLOGICAL SOCIETY—Regular meeting. Speaker to be announced. The Admirals Table — Ventura.

19-22 CONTINUING EDUCATION PROGRAM. Milton B. Dobrin. United Geophysical Corp. (See Los Angeles section for details).

22-23 PACIFIC SECTION. SEPM Field Trip and Dinner Meeting (See SEPM section for details).

November

S	M	T	W	T	F	S
	1	2	3	4	5	6

15. BAKERSFIELD COLLEGE. Biostratigraphy Seminar, 7:30 p.m., SE Rm 56. Dr. Tor N. Nilsen, USGS Menlo Park. "Stratigraphy and Sedimentation of the Tejon Formation."

Set aside March 11, 1972, for the Pacific Section Field Trip. The area to be covered will be the West Side Geology and Oil Fields from Blackwells Corner to Coalinga—including McCulloch's New Discovery. Guidebook will be a companion volume to the 1968 Southern San Joaquin Valley publication.

LETTERS

to
the

EDITOR

In your September issue, you invite comments — so, here are two, one pro, and one con.

Pro: I like the "new style", and I strongly support the principle (having on a few occasions myself tried to function as an editor that a new editor need view past patterns as no more than guide lines that he may wish to follow or forget, as his own good judgment dictates.

Con: But a name that has achieved favorable recognition and that has long been in use is something else again. Should not a change in name perhaps require a court decision?!! Too many of us "PPG" was the commonly used, affectionate diminutive for our journal, "The Pacific Petroleum Geologist". Very rarely have I ever heard it referred to as "The Newsletter". Therefore I must confess that this abrupt change came as a shock and a disappointment. "PPG" has alliterative and

LETTERS TO EDITOR (Continued)

P.S. I am a little concerned about San Diego Gas & Electric Company's customers. They certainly must not be "cooking with gas" or doing much else with it, for that matter.

P.P.S. Your Coast Society correspondent in Ventura, Dick Stewart, who wishes not to be confused with the Dick Stewart working for Union in Los Angeles, may or may not wish to be confused with the Dick Stewart who is District Geologist for the California Division of Mines and Geology in San Francisco. Possibly they should form the Dick Stewart Geological Society, thereby fusing the confusing.

Please excuse the error about San Diego's gas consumption. That was a boo boo on my part. Haste makes waste and bad editing develops critics of careful readers. Many of the members caught this error and were kind enough to let me know. At least now I know someone out there reads the "Newsletter" or whatever this publication will be called.

* * *

Congratulations on your first newsy Newsletter for the Pacific Section. It is good to have more than Los Angeles items in it. Your change in the name to Newsletter meets with approval around here. I hope you will push for Letters-to-the-Editor.

If you wish, we will send you Survey news items of local or national interest from time to time. Many of these will be selected press releases that you may want to choose from.

Again, congratulations on a well written and produced Newsletter.

John C. Maher, Geologist
Branch of Organic Fuel
& Chemical Resources

How's this for pushing? If all members will keep their local Associate Editors posted on what's happening, then news of all areas will be printed. By all means send us information.

* * *

As a subscriber to the "Pacific Petroleum Geologist" commencing with Volume I, No. 1 in January, 1947, I was most interested in the changes as reported in the September, 1971 edition. The new style is attractive and represents a worthwhile improvement, but I do have a suggestion for you.

Until recent years, the "Newsletter" as it is now called, not only provided us with a means of keeping track of our friends and associates, but it also contained geological information from time to time. On many occasions, the Newsletter published abstracts of presentations made by geologists at various forums, seminars, and local society meetings. This was done in order to have some record of information which, for the most part, would not be published. Many geologists develop a great amount of knowledge concerning certain subjects and areas, and even though they are not willing or able to formally publish their thoughts, they do present them informally to our members.

Although the Newsletter is not intended to be a technical journal, I recommend that some attention be given to geology. Perhaps you could include a section with a title such as: "Geological Reviews and Comments"? One of the best ways to get the information is through your Associate Editors who could ask speakers in their areas to provide them with abstracts for publication.

I know that being Editor is a demanding and sometimes thankless task. The best of luck to you!

Sincerely,
Everett W. Pease

Your suggestion is well taken and we intend to include abstracts in future publications. Associate Editors please take note.

* * *

In today's mail I received a carbon copy of the letter Ian Campbell wrote to you under date of September 6. Up to that time I had been unaware of the name-change to which his letter refers. Evidently I have not seen a new issue for I could hardly have failed to notice such a conspicuous change.

As the originator of the name, and of the publication itself, I can fairly be charged with bias in its favor. But I don't think that deprives me of the privilege of objecting to the change. Not surprisingly, I endorse all of Ian's comments in his letter to you. If, as he surmises, your action was partly induced by the desire to avoid the designation of "Petroleum Geologist", I can only say that it is a title that I have been proud to bear for many years. What other category of geologists has a greater record of achievement?

I do not expect you to be as much influenced by my views as you may be by those of others who can look upon the whole matter more objectively than I, but I hope there will be enough protests to induce you to restore the old name. I am all for progress, but I am unable to see that any has been accomplished by this name-change.

Without any ill will, I wish you the best of success.

Yours very truly,
Martin Van Couvering

NEWSLETTER**Pacific Section A.A.P.G.**

P.O. Box 17486 Foy Station
Los Angeles, California 90017

NEWSLETTER

of the Pacific Section

American Association of Petroleum Geologists

VOLUME 25

NOVEMBER, 1971

NUMBER 11

GUEST EDITORIAL . . .

The San Joaquin Geological Society 240 members strong, has survived the continuing exodus of petroleum geologists from the Bakersfield area during the past year. Because of the efforts of Mr. Don Rogers, membership chairman, new and past members come from a diversity of applied geological fields including health, ecology, water supply and public safety.

Thus the make-up of the S.J.G.S. membership is changing. Since these new members are automatically members of the Pacific Section it seems appropriate to consider diversification of the Pacific Section to include other than petroleum geology and thereby avoid losing an effective voice to splinter groups. So it potentially is in the S.J.G.S.

The October guest speaker, and a great legislative friend to geologists, Assemblyman Bill Ketchum, expressed it mildly when he advised the S.J.G.S. that we should stop fighting each other and work together toward common objectives. I have attended meetings of the S.J.G.S. since 1948, and as I recall the chandeliers of the old El Tejon Hotel fairly shook during an occasionally boisterous meeting. Last spring, I arranged for a pre-dinner discussion group on pending legislation. Who attended? Only Mort Polugar—the discussion leader!

During this summer an event took place which has been misconstrued by some. Several Kern County officials requested help in formulating and establishing a geologic hazards code for Kern County.

Because the S.J.G.S. has a wide range of geological talent and because the Society should be virtually concerned with public safety it is felt that its members would highly approve of action on this local matter. Am I wrong?

In September Mr. Art Richards, S.J.G.S. of Kern County Health Department invited me to a meeting with the Kern County Building Inspection De-

partment to discuss a geologic hazards ordinance. Mr. Bruce Robinson, S.J.G.S. Vice President, and I attended this meeting as representatives of the S.J.G.S. Our conclusion was that the talent of the S.J.G.S. was greatly needed. But as officers of the S.J.G.S. it was felt that the S.J.G.S. was being by-passed by others and that in one fell swoop the S.J.G.S. was being relegated to being a chowder and marching society forever, free only to bust our picks obtaining worthwhile subjects and speakers for our meetings.

A motion up to the floor by the Executive Committee of the S.J.G.S. was passed. The motion substituted "qualified registered geologist to write and sign geological reports" in Kern County in lieu of "certified engineering geologists."

HARRY FEDER,
President, S.J.G.S.

San Joaquin

Bud Reid has resigned as Executive Vice President of Occidental on October 5. He terminates as an employee on October 31, with no plans for the immediate future—but rest.

Bud leaving the oil industry is like having the Pope join the Baptist Church.

* * *

The annual California Oil Scouts-San Joaquin Geological Society Golf Tournament and Barbecue was held Friday, September 17. The golf tournament was deftly managed by Mr. Henry Dawson of Humble Oil and the Pork Chop Dinner was efficiently supervised by Mr. Chuck Edwards of Ferguson and Bosworth. There were many in attendance who journeyed to the "Golden Empire" from the coast and smoggy L.A. A special thanks to Trax-

(Continued on Page 2)



ASSEMBLYMAN Ketchum, center. Garry Ronning, President, Bakersfield Association of Petroleum Landmen, left. Harry Feder, President S.J.G.S., right. Bruce Robinson, Jr., Vice President, S.J.G.S., right front.

San Joaquin (continued)

le rand Hallinger for the bold, enthusiastic bidding during the auction of the extra pork chops.

* * *

The regular October meeting of the San Joaquin Geological Society held a spirited discussion worthy of mention. The lively discussion focused on the limited usage of the term "Registered Geologist" in all new legislation. The San Joaquin Geological Society acted on and passed unanimously, three motions to delete the word *engineering* from usage in terms Registered engineering Geologist or engineering Geologist as used in proposed and current legislation. It was the voiced opinion of the membership that the mapping of geologic hazards could be accomplished more skillfully by a Registered Geologist than by some engineering geologists.

* * *

The following account by Bret Harte was of a meeting attended by Mr. James. We were unable to determine whether this is a report of the San Joaquin Geological Society's October shivaree or the minutes of the last Pacific Section executive meeting.

I reside at Table Mountain, and my name is Truthful James;
I am not up to small deceit, or any sinful games;
And I'll tell in simple language what I know about the row
That broke up our Society upon the Stanislow.

But first I would remark that it is not a proper plan
For any scientific gent to whale his fellow-man,
And, if a member don't agree with his peculiar whim,
To lay for that same member for to "put a head" on him.

Now nothing could be finer or more beautiful to see
Than the first six months' proceedings of that same Society,
Till Brown of Calaveras brought a lot of fossil bones
That he found within a tunnel near the tenement of Jones.

Then Brown he read a paper, and he reconstructed there,
From those same bones, an animal that was extremely rare;
And Jones then asked the Chair for a suspension of the rules,
Till he could prove that those same bones was one of his lost mules.

Then Brown he smiled a bitter smile, and said he was at fault,—
It seemed he had been trespassing on Jone's family vault;
He was a most sarcastic man, this quiet Mr. Brown,
And on several occasions he had cleaned out the town.

Now I hold it is not decent for a scientific gent
To say another is an ass, —at least, to all intent;
Nor should the individual who happens to be meant
Reply by heaving rocks at him, to any great extent.

Then Abner Dean of Angel's raised a point of order—when
A chunk of old red sandstone took him in the abdomen,
And he smiled a kind of sickly smile, and curled up on the floor,
And the subsequent proceedings interested him no more.

For, in less time than I write it, every member did engage
In a warfare with the remnants of a palaeozoic age;
And the way they heaved those fossils in their anger was a sin,
Till the skull of an old mammoth caved the head of Thompson in.

And this is all I have to say of these improper games,
For I live at Table Mountain, and my name is Truthful James;
And I've told in simple language what I know about the row
That broke up our Society upon the Stanislow.

Los Angeles

Annual Holiday-Dinner Dance—Los Angeles Basin Geological Society. Place SS Princess Louise, Terminal Island.

Cocktails: 7:30 p.m. (Furnished by Service Companies).

Dinner: 8:30 p.m.

Cost: \$19.00 per couple.

Music by Moonlighters.

Additional details will be sent out with invitations. Reservations for groups of ten at one table will be available. Harbor Atmosphere for this occasion should be exciting for all. Let's come and everyone make it a Happy Holiday Event. Chairman: Bob Lindbloom, Standard Oil Co., LaHabra, CA 90631.

* * *

James Maytum returns to Texaco's Wilshire Blvd. office after a four-month stay in west-central Papua-New Guinea

as wellsite geologist on loan to Texaco Overseas Petroleum Co. He reports, it is good to be home but it would be nice to have just a bit of the 1½-2" of rain per day here at home for the yard. New Guinea was a great place to visit but a *!*)@ of a place to drill a well and do mapping.

* * *

Cuno Lassen (formerly with Texaco in Ventura) arrived in Brisbane, Australia for assignment to Texas Overseas Petroleum Co in late August. He had been in Equador for Texaco for two years.

Recommended Reading

U.S.G.S. - PUBLICATIONS—

PROFESSIONAL PAPER 486-E: Salinity of surface water in the lower Colorado River—Salton Sea area, by Burdige Ireland. 50¢

PROFESSIONAL PAPER 750-B: Geological Survey Research 1971. Chapter B. \$3.50

BULLETIN 1028-U: Geology of the Near Islands, Alaska, by Olcott Gates, H. A. Powers & R. E. Wilcox, with a section on: Surficial Geology, by J. J. Schafer. \$1.00

BULLETIN 1299: Geology of the Panabint Butte quadrangle, Inyo County, Calif., by W. E. Hall. \$1.25

MAPS:

GP 752: Aeromagnetic map of parts of the Tonopah and Millet 1° by 2° quadrangles, Nevada. \$1.00

GP 754: Aeromagnetic map and interpretation of the Salton Sea geothermal area, California, by Andrew Griscom and L. J. P. Muffler. \$1.00

I-350-B: Topographic map of United Kingdom of Libya (1962). Reprinted 1971. \$1.00

I-603: Geologic map of the Northport quadrangle, Washington, by R. G. Yates. \$1.00

I-612: Geologic map of the Eureka quadrangle, Eureka and White Pine Counties, Nev., by T. B. Nolan, C. W. Merriam and D. A. Brew \$1.50

I-653: Geologic map of the proposed Paterson Ridge Pumped-Storage Reservoir, south-central Washington, by R. C. Newcomb \$1.00

I-677: Bathymetry and geology—east cap of the Island of Hawaii, by J. G. Moore. \$1.00

I-682: Geologic map of the St. Michael quadrangle Alaska, by J. M. Hoare and W. H. Condon. \$1.00

MR 57: Reported occurrences of selected minerals in Colorado, compiled by the Branch of Mineral Classification, Conservation Division. \$1.00
(Continued on Page 6)

Coast

The luncheon meeting is on Thursday of every week, holidays excepted (November 25, Thanksgiving). There will be no phone notices of these meetings. It would be advisable to call the restaurant on the luncheon day to find out if it is open. We have added two exciting new "ptomaine palaces" to the list and hope to have some enthusiastic response to this "near new" list. See Calendar for specific dates and places.

* * *

We wish to thank Ed Scott of the Union Research Center, Brea for an interesting talk on the VIII World Petroleum Congress in Moscow.

November's speaker will be Mr. Howard Level, Instructor of Geology at Ventura College. His topic will be "A European Odyssey" — the adventures of a geologist-tourist knocking around Europe. The occasion will be Ladies' Night. It all happens November 16, with Happy Hour at 6:00 p.m., and dinner at 7:00, at the Admiral's Table, Ven-

tura; cost is \$5.50 per person. Phone Jack Durrie at (805) 643-2154 for reservations.

* * *

About People. Mel Oxsen of CON-OCO, in Ventura, is being transferred to Oklahoma City, effective November 1. We understand he's looking for a winning college football team.

* * *

Gordon (Buz) Welsh, of SUN, Ventura, is being transferred to Houston. At this writing, the date is not certain.

Alaska

NO REPORT

BASQUE BLAST-OFF

Late last fall, Jean B. Senteur de Boue was asked to investigate and report on the quality, quantity and effects of an ancient Basque drink. "Picon Punch". For some unknown reason, Mr. de Boue either disappeared or became mesmerized along the shepherders trails between Southern California and Northern Nevada. A garbled report from Winnemucca in July indicated that possibly the Nevada desert summer was the reason our investigator appeared in the eastern foothills of the Sierra Nevada's. Now that fall is at hand, a complete verbal report was given to the bartender at Wild Rose Station. It seems that the quality and effects portion of our Pecon Punch report were left to the imagination. Quantity and mixture comes to use via the bartender's grapevine. Our final version is from south of the tracks in Bakersfield, and it goes like this:

In a glass with 2 ice cubes pour
3/4-oz. Amer Segales
Dash of Grenadine
1-oz. Brandy
Splash of soda
Slice lemon peel
Stir good (very important)
DRINK!

Mr. de Boue noted that now all geologists, geophysicists and paleontologists can get in training for the fantastic Basque Ice Breaker party to be held in Bakersfield next spring.

He guarantees that training will be required if all Pacific Section conventioners are to make the 9 A.M. papers, Thursday, March 9, 1972.

The field trip committee endorses the above training schedule. On Saturday we will visit the habitat of the elusive OIL WORM where a keen eye and a steady hand is essention.

CALENDAR for November

S	M	T	W	T	F	S
	1	2	3	4	5	6

4. COAST GEOLOGICAL SOCIETY — Noon luncheon, JUE's Paradise "Exotic Oriental" 2437 E. Main Street, Ventura (648-2919).
9. SAN JOAQUIN GEOLOGICAL SOCIETY. Harold Sugden "California Underwater." Thanksgiving Ladies Night. American Legion Hall at 2020 H Street, Bakersfield.
11. COAST GEOLOGICAL SOCIETY—Noon luncheon, Swedish Kitchen "Cool Nordic" at 2686 Loma Vista Road, Ventura. (643-9023).
15. BAKERSFIELD COLLEGE. Biostratigraphy Seminar, 7:30 p.m., SE Rm 56. Dr. Tor N. Nilsen, USGS Menlo Park. "Stratigraphy and Sedimentation of the Tejon Formation."
16. COAST GEOLOGICAL SOCIETY — Howard Level, Ventura College "A European Odyssey" Ladies Night. (See Coast section for details).
18. COAST GEOLOGICAL SOCIETY — Noon luncheon, Casa de Soria "Hot Mexican" 1961 Thompson Blvd., Ventura (648-2083)

December

		1	2	3	4
--	--	---	---	---	---

2. COAST GEOLOGICAL SOCIETY — Noon luncheon, Dave's Deli "Quaint Hebrew" 512 E. Main St., Ventura (648-1977).
4. LOS ANGELES BASIN GEOLOGICAL SOCIETY — Annual Holiday-Dinner Dance. (See sectional news for details)
6. BAKERSFIELD COLLEGE — Biostratigraphy Seminar 7:30, Room 56, Dr. Peter J. Fisher, Whittier College, "An Ancient Submarine Canyon and Fan: The Megans Channel, Sacramento Valley."
9. COAST GEOLOGICAL SOCIETY — Noon luncheon, Jue's Paradise.
14. SAN JOAQUIN GEOLOGICAL SOCIETY. Art Huey "Case Histories in California using the Magnetometer to Locate Faulting."
16. COAST GEOLOGICAL SOCIETY — Noon luncheon, Swedish Kitchen.
17. COAST GEOLOGICAL SOCIETY — Christmas Dance — Women's Club at Ventura.
23. COAST GEOLOGICAL SOCIETY — Noon luncheon, Casa de Soria.
30. COAST GEOLOGICAL SOCIETY — Noon luncheon, Dave's Deli.

PACIFIC SECTION — AMERICAN ASSOCIATION PETROLEUM GEOLOGISTS EXECUTIVE COMMITTEE

President.....RICHARD L. HESTER
(213) 249-9187
Vice President.....K. B. HALL
(805) 965-8055
Secretary.....ROBERT G. LINDBLOM
(213) 295-6361
Treasurer.....DONALD E. HALLINGER
(213) 689-3649
Past President.....JOHN F. CURRAN
(805) 965-8055
Editor.....STANLEY "ED" KARP
(805) 871-5346

DELEGATES

Los Angeles.....
San Joaquin.....DENNIS SHEA
Coastal.....
Northern California.....
Sacramento.....ROLAND J. BAIN
(916) 481-6729

Northwest

Alaska.....

NEWSLETTER STAFF

Editor.....STANLEY E. KARP
Membership Secretary.....JUDY HUGHES
ASSOCIATE EDITORS

Alaska.....

Coast.....RICHARD L. STEWART
(805) 642-0376 or 963-6404

Los Angeles.....DONALD E. HALLINGER
(213) 689-3649

Northern California.....BUD PORTER
(415) 894-5278

Northwest

Sacramento.....

San Joaquin.....LEON J. EARNEST
(805) 399-2961

Recommended Reading.....LUCY E. BIRDSALL
NEWSLETTER of the Pacific Section—American Association Petroleum Geologists is published monthly by the Pacific Section.

Material for Publication and requests for previous copies should be addressed to STANLEY E. KARP—GEOLOGY DEPT., BAKERSFIELD COLLEGE, BAKERSFIELD, CALIF. 93305.

Material received by the 15th of each month will be included in the following issue.

CHANGE OF ADDRESS, subscription and membership inquiries should be directed to MEMBERSHIP SECRETARY, PACIFIC SECTION AAPG, P. O. Box 17486, FOY STATION, Los Angeles, Ca. 90017.

Thanks to the anonymous contributor who sent a list of delegates to the National AAPG. Our Newsletter list of delegates is for the Pacific Section Executive Committee. WILL SOME ONE OUT THERE TELL US WHO THEY ARE?

Sacramento

Sacramento Petroleum Association Officers for 1971 are:

President Gene McCraw (B J Service)
Vice President Ed Lacey (Texaco)
Secretary-Treas. Terry Plumb (Signal)
Meeting place: Scheidel's Bavarian Restaurant, Wednesday at noon.

* * *

Mike Pepper (formerly Amerada Hess in Rio Vista, LA, Denver and Tulsa) is now a Consultant with office in Sacramento.

* * *

Art Hawley (Consultant) has been in hospital for surgery. Everything appears to be OK.

* * *

We had excellent turn-outs for both SPA (June) and API (Sept.) golf-booze-dinner events.

We welcome Roland Bain to the Newsletter staff. Let it be known that our first two issues were "Bainless."

Northern California

NO REPORT

DID YOU KNOW . . .

Texas has 92,062 miles of gas pipelines?

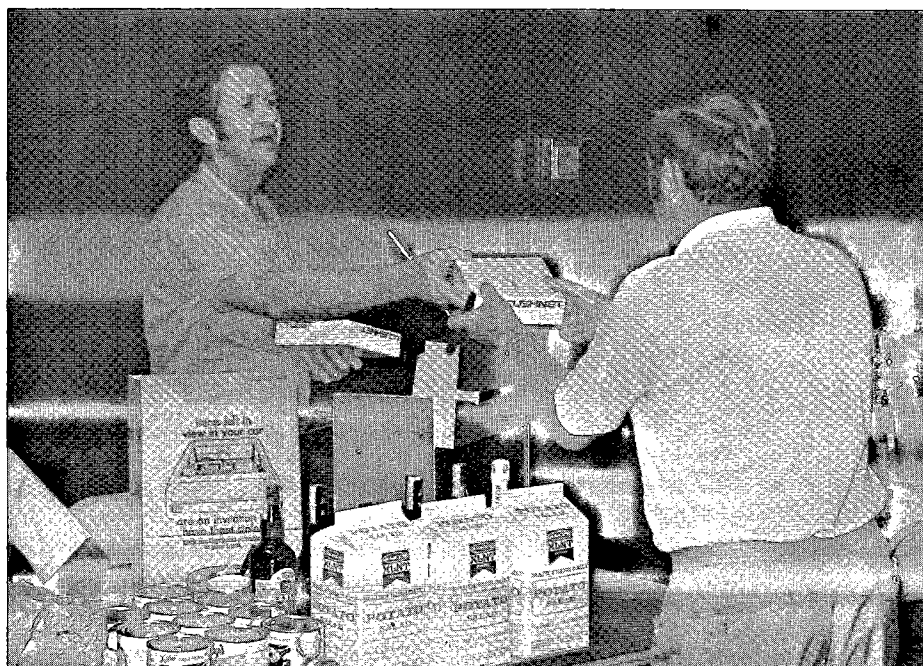
(phew, we knew Texans passed a lot of gas, but we didn't think it was that much.)

* * *

The potato is about 80% water (so is the average California Oil Well.)

* * *

The USGS has a 20-minute film, "John Wesley Powell: Canyon Geologist" available at no charge for short term loans. Using the words of Powell, the film is a journey through the geology of the Grand Canyon. Particularly effective is the choice of a popular song of a hundred years ago "Flow gently, sweet Afton," sung softly against the raging waters of the Colorado. It is difficult to see who would not enjoy this film. It would make a great luncheon program.



Harry Dawson, Chairman, Annual Oil Scouts-Geologists Golf and BBQ, handing out golf prizes.

Pacific Section

Corporate contributors to the 1971 Pacific Section Spring Picnic are listed below. We wish to apologize for not publishing their names sooner, but transfers, etc., temporarily suspended communications. We hope the gratitude of the members of the Pacific Section does not appear thus diminished. We should all realize that without the help of these contributors, the picnic would either be far smaller, or far more costly.

The contributing companies were:
A B C Directional Drilling Control
Peter Bawden Drilling Co.
Borst and Giddens Logging Service
Burns Geological Exploration Inc.
Byron Jackson Inc.
California Production Service
Core Laboratories Inc.
Dresser Atlas

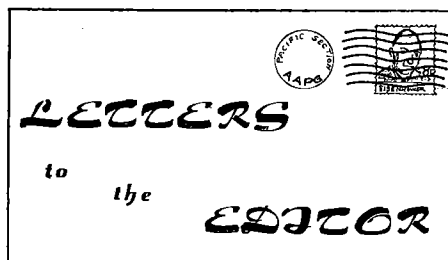
Set aside March 11, 1972, for the Pacific Section Field Trip. The area to be covered will be the West Side Geology and Oil Fields from Blackwells Corner to Coalinga—including McCulloch's New Discovery. Guidebook will be a companion volume to the 1968 Southern San Joaquin Valley publication.

Dresser Industries, Inc.
Driltrol
Exploration Logging Inc.
General Oceanographics, Inc.
Geologic Engineering Service, Inc.
Global Marine, Inc.
Hoven & Co., Inc.
IMC Drilling Mud
Mercury-Christensen Co.
Munger Oil Information Service, Inc.
Offshore Navigation, Inc.
O'Meara and Rogers Construction Corp.
Pacific Log Exchange, Inc.
Petrolog
Reese Sales Co.
Rotor-Aids Inc.
Schlumberger Well Services
Seismograph Service Corporation
Technical Oil Tool Corp. (TOTCO)
United Directional Services
Vetco Offshore Industries, Inc.
Welex
Western Offshore Drilling
Exploration Co.

The next time you see these contributors, thank them for their support. They'll appreciate it and so will we.

Northwest

NO REPORT



Orville Hart mentioned the fact that you were seeking references to historical earthquake-faulting. Have you tried an exhaustive concordance of the Holy Bible?

You will find that the earthquakes were memorable events even 4500 years ago, and so locally rare that they were used as calendar markers. Many of these earthquakes are being used today by the Israeli archeologists in dating their digs.

One rather interesting earthquake of the future is described in such detail that a geologist will certainly see the need to make a map and diagram it through. For your information see Zechariah, Chapter 14, note location, directions of movement, and resulting physiography. It might be interesting to print this passage in the Pacific Newsletter and let the membership interpret the kind of fault. There are at present 8:1 for right lateral faulting, and the dissenter sees it as a normal E-W fault forming a graben valley, right where the Wailing Wall (thought to be part of Solomon's Temple) is in Jerusalem.

If after reading this, if you are still interested, read 1 Kings, Chapter 19; Amos, Chapter 1; Isaiah, Chapter 29 and of course, Matthew, Chapter 27 and Acts, Chapter 16. There are many other references which cross-tie with historical-secular chronicles.

Have a good time reading.

Yours truly,
R. L. Manly

It is good reading and thanks for the references. Let's send our readers to the original source for the Zechariah passage. It wouldn't hurt some of them to read the Bible again. However, in accordance to the established procedures initiated by this editor, the name of "The Holy Bible" will probably be changed to "The Good Book."

* * *

Congratulations on assuming the editorship and upon your imaginative energy! I am happy we have an "Eager Beaver" in this most important and onerous job.

On the controversial issue of the name change I agree with the old-timers,

Martin Van Coucuring, Ian Campbell, etc. As a matter of personal choice I would have wished our traditions preserved but then I too have born the title "Petroleum Geologist" with pleasure, some honor and a little success . . . I would not have it otherwise.

Normally a decision of this nature is certainly within the prerogative of an Editor but you still have a hurdle to cross.

The specific name "Pacific Petroleum Geologist" is incorporated in our constitution in three separate clauses:

Article III, Sec 3. (the publication of the Section, etc.)

Article IV, Sec. 2 (Your authority to act)

Article VII, Sec. 1 (Notice of nominations, etc.)

I think it would be somewhat nit picking to balk at this constitutional point now that you have made a change but I will recommend to the Executive Committee that at the end of this years service either the original name must be restored or a series of constitutional amendments must be requested from the membership.

Up and at 'em lads, draw your pens and charge!

Sincerely,
Tom Baldwin

Before you "throw the rascals out" Tom, I'd like to get a few licks in first. I too am proud to wear the title of "Petroleum Geologist" and the suggestion that a name change implies displeasure with the oil industry hurts a little. Tell me what happened to these traditional names — General Petroleum Corp; Intex Oil Co.; Kern County Land Co.; The Ohio Oil Co.; Richfield Oil Corp.; The Texas Co.; Tidewater Oil Co.; Western Gulf Oil Co., etc. and what about The Mineral Information Service?

This publication is a newsletter or bulletin and not a petroleum geologist-Pacific or other kind. It does not work for an oil company nor conduct research but serves as a conveyance of information to the members of the affiliated societies.

I don't agree that every Editor should have a free hand to make changes at will, just as I reject the argument that "this is the way we did it last year." The question of name change was raised in the February 1971 issue of the PPG and again in April 1971. The change was not a whimsical decision on my part. Since becoming Editor I have received thirteen letters from Pacific Section members. Three letters (published in the Newsletter) were against the change, 6 were for the changes and 4 made no mention of it. Thirteen letters

out of 1300 members is hardly a groundswell of enthusiasm but the ratio of support is 2 to 1.

Really — I'm not a dirty Commie Pin-ko — honest, I'm Republican. Being a strict Constructionalist I don't want to fight the Constitution.

Perhaps we can resolve the problem by either a ballot box at the March Convention or a mail vote. A short note to the Editor to "Hang In There" or "Get Out You Bum" will suffice.

New Members

KEITH R. DAVIS

c/o Natomas Co.
601 California St.
San Francisco, CA 94108

DONALD FIFE

17341 Irvine Blvd., Rm. 207
Tustin, CA 92680

MELVIN H. FISCHER

Occidental Pet. Corp.
5000 Stockdale Hwy.
Bakersfield, CA. 93309

DANIEL J. JONES

4821 Hasti-Bob Ct.
Bakersfield, CA 93309

GEORGE LUSICH

2019 24th St.
Bakersfield, CA 93301

CHUCK MARTIN

6201 Hesketh St.
Bakersfield, CA 93309

B. W. MILLER

P.O. Box 1392
Bakersfield, CA 93302

ROBERT A. NESBIT

P.O. Box 1392
Bakersfield, CA 93302

WILLIAM H. PARK

P.O. Box 1392
Bakersfield, CA 93303

A. G. SARAD

Rt. 1, Box 380
Bakersfield, CA 93308

J. ADDISON SAWYER

650 S. Grand Ave.
Los Angeles, CA 90017

ASHLEIGH W. SMITH

4100 Indie St.
Bakersfield, CA 93306

JEFFREY W. SMITH

P.O. Box 5620, N.A.U.
Flagstaff, Ariz. 86001

PAUL G. WAGNER

3000 Delburn St.
Bakersfield, CA 93309

JERRY C. WILSON

Dames and Moore
1100 Glendon Ave.
Los Angeles, CA 90024

Two-thirds of the new members live in Bakersfield. Don Rogers (Ferguson & Bosworth) San Joaquin Society Recruiter was heard shouting "First Bakersfield, then the World!"

Change of Address

H. T. ANDERSON
4465 9th St.
Riverside, CA 92501

LLOYD O. BOSWORTH
1370 Janet Lane
Concord, CA 94521

DANA B. BRAISLIN
Union Oil Co. of Cal.
P.O. Box 2212
Santa Fe Springs, CA 90670

DAVID R. BUTLER
968 Savannah Circle
Walnut Creek, CA 94598

SIMON CORDOVA
5904 Yeoman Way
Citrus Heights, CA 95610

JAMES R. EVERETT
2965 Morningside
Thousand Oaks, CA 91360

WILLIAM GUSSOW
1423 Sunny Crest Dr.
Fullerton, CA 92632

EDWARD HADDAD
2117 W. Lindsay
Norman, Okla. 73069

F. WOODS HINRICHS
Aero Service Corp.
P.O. Box 989
Beverly Hills, CA 90213

ROBERT HORTON
Tenneco Oil Co.
P.O. Box 2888
Houston, Texas 77001

ARTHUR S. HUEY
1126 La Dera Dr.
Long Beach, CA 90807

MILTON W. LEWIS
17401 Irvine Blvd., Suite G
Tustin, CA 92680

CHARLES E. LILLY
2286 La Granada
Thousand Oaks, CA 91360

JOHN S. LOOFBOUROW, JR.
Westates Pet. Co.
811 W. 7th St.
Los Angeles, CA 90017

GLADYS LOUKE
P.O. Box 274
Fair Oaks, CA 95628

A. MAASKANT
26792 Saddleback
Mission Viejo, CA 92675

ROBERT L. MANLY
217 Meda Lane
Mill Valley, CA 94941

JOHN A. MANN
P.O. Box 599
Denver, Col. 80201

CHARLES McCOLLOUGH
Shell Oil Co.
One Shell Plaza
P.O. Box 2463
Houston, Texas 77001

RICHARD G. MEAD
2030 N. Pass Ave.
Burbank, CA 91505

M. G. MEFFERD
4746 Papaya Dr.
Fair Oaks, CA 95628

ROBERT F. MOLL
327 S. Serrano Ave.
Los Angeles, CA 90020

MICHAEL PAINE
Humble Oil & Refg. Co.
1800 Ave. of the Stars
Los Angeles, CA 90067

EVERETT W. PEASE
1874 Grandview Dr.
Oakland, CA 94618

MILES W. PEPPER
Consulting Geologist
3382 El Camino Ave., No. 32-B
Sacramento, CA 95821

H. L. POPENOE
790 Cromwell Way
Vista, CA 92083

RICHARD C. SHELTON

1247 Deer Trail Lane
Solvang, CA 93463

JOHN E. SZATAI
1 Braybourne Dr.
East Norwalk, Conn. 06855

A. H. WARNE
4801 Surrey Lane
Bakersfield, CA 93309

T. H. WILLIS
General Expl. Co.
445 So. Figueroa St., Suite 1701
Los Angeles, CA 90017

The following members have the following new address:

Standard Oil Co. of Cal.
P.O. Box 3862
San Francisco, CA 94119

C. A. BENGSTON
WM. G. CALKINS
ROBERT F. FLEGE, JR.
GENE GREGORY
THOMAS C. GROSS
ORVILLE D. HART
JAMES E. HEPPERT
RALPH J. NEWTON
FRANK W. SMITH
DON W. SUTTON
DOUGLAS R. WATERMAN
M. W. WOLF
THOMAS L. WRIGHT

Recommended Reading (continued)
(Continued from Page 2)

GEOLOGICAL SOCIETY OF AMERICA
BULLETIN, vol. 82, no. 7, July 1971

Geology of central San Clemente Island, Calif., by Paul M. Merifield, D. L. Lamar and M. L. Stout.

Glacial history of the last eleven thousand years in Adams Inlet, Southeastern Alaska, by G. D. McKenzie and R. P. Goldthwait.

NEWSLETTER

Pacific Section A.A.P.G.

P.O. Box 17486 Foy Station
Los Angeles, California 90017

NEWSLETTER

of the Pacific Section
American Association of Petroleum Geologists

VOLUME 25

DECEMBER 1971

NUMBER 12

STATE BOARD

John E. Wolfe, Executive Secretary of the State Board of Registration for Geologists, sent in the following information which should be of interest to all Geologists.

The State Board of Registration for Geologists has received complaints regarding individuals who are not geologists, but who are testifying at public hearings regarding geologic hazards, especially in the Los Angeles area. In many instances, the statements are erroneous and misleading.

In these same complaints it was suggested that the Board form a committee to refute this type of testimony. The Board has no authority to investigate these accusations unless an individual has violated the Geologist Act by signing a report as a registered geologist, and he is not registered, or by practicing or offering to practice geology for others. This was not evident in the testimony reviewed by the Board.

Since the Board is restricted by statute from acting in this matter, we are turning to the geological societies in California with a suggestion that these societies create either a local, regional, or statewide Ad-Hoc Committee to refute these erroneous statements. The societies do not have the statutory limitations which restrict the Board, and a committee of this type, representing all branches of the profession rather than a single political entity, could be more effective in dealing with matters of this sort concerning the geology of the state.

Copies of this statement are being mailed to all of the major professional geological societies in California.

NOTICE OF AND REASONS FOR REGULATION CHANGES

The State Board of Registration for Geologists enacted regulations to carry out the provisions of the Geologist Act. These regulations include the qualifications for certification as an engineering geologist and were enacted prior to reviewing the applications of those who applied for certification during the

(Continued on Page 2)

San Joaquin

The Society held its annual "ladies night" champagne dinner at the American Legion Hall Tuesday night, November 9, 1971. Gifts were raffled, including 6 bottled gifts donated by Mr. Bob Burns of Burns Geological Exploration, Inc., and were handed out by the "Great White Turkey" (Army Kane).

Some of the visitors from down South were the Pacific Section President Mr. Dick Hester and wife, Mary Hester, Mr. and Mrs. Bob Burns, Mr. and Mrs. Doug Traxler, and Mr. and Mrs. Gene Tripp. The program, "California Underwater" was a slide presentation by H. Sugden.

* * *

Mr. Army Kane, former interpreter of the curves with "Big Blue", has not let the fact be well known but it is true that he has hung out his shingle and is available for consulting work.

* * *

A lot of effort is being put into the preparation of the 47th Annual AAPG-SEPM-SEG convention to be held in Bakersfield March 8-11 at the Civic Auditorium with a field trip that covers the area from Blackwells Corners to Avenal. Make your plans now to attend.

Alaska

Howdy Ed:

Your message in the last Newsletter—"Alaska, no report"—came through 5 by 5. So, here is a rousing report from the Great Land. No activity. Until the politicians, poluticians, and Natives do some serious peace pipe puffing (smokeless, non-flare tobacco naturally) the land men can keep sitting by the fire and getting fatter than town dogs. Looks like there will be a little doodle bugging and digging though after the muskeg freezes up hard as a tool pusher's head.

Assuming that eventually the good guys (whomever they are) will win, and since there are whole basins in the state where all the rock hammer tracks laid

(Continued on Page 3)

AAPG NATIONAL

The following is a list of Chairmen and members of Committees, including geologists from our area, appointed by the President of the American Association of Petroleum Geologists.

The AAPG is the world's largest geological organization with more than 15,000 members in the U.S. and in eighty countries around the world. The AAPG will hold its 57th Annual Convention April 17-19, 1972, in Denver.

In announcing these appointments, President Sherman A. Wengert, Professor of Geology at the University of New Mexico in Albuquerque, said, "These men are truly professional scientists who place service to their science and the fellow professionals above personal interests — the committees are the structure and strength of an organization such as AAPG."

ALASKA:

Anchorage: Richard W. Crick, *House of Delegates*; Marvin D. Mangus, *House of Delegates*; William C. Penttila, *Boy Scout Committee*.

College: Frederick F. Wright, *Marine Geology Committee*.

CALIFORNIA:

Altadena: Thomas A. Baldwin, *Advisory Council*.

Bakersfield: Ernest K. Espenschied, *Continuing Education Committee*; Otto Hackel, *House of Delegates*; Michael R. Rector, *Membership Committee*.

Brea: Lowell E. Redwine, *House of Delegates*; Edward W. Scott, *Research Committee*.

Fullerton: William C. Gussow, *Research Committee*; Thomas L. Wright, *Environmental Geology Committee*.

Irvine: James Wesley Vernon, *Marine Geology Committee*.

La Habra: Donald Asquith, *Field Trip Research & Coordination Committee*; Lawrence C. Bonham, *Boy Scout Committee*; John E. McCall, *Research Committee*; George T. Moore, *Marine Geology Committee*.

La Jolla: Joseph R. Curray, *Marine Geology Committee*; Elizabeth Lee Gealy, *Marine Geology Committee*.

Long Beach: Stanley G. Wissler, *Chairman, Commissioner on American*

(Continued on Page 2)

AAPG National

(continued from Page 1)

Commission on Stratigraphic Nomenclature.

Los Altos: Edward C. Doell, *House of Delegates*.

Los Angeles: James B. Anderson, *House of Delegates*; Orville L. Bandy, *President, Division of Paleontology and Mineralogy*; Ray A. Burke, *Industrial Advisory Committee*; William H. Easton, *Academic Advisory Committee*; Rolin Eckis, *Industrial Advisory Committee*; John A. Forman, *Marine Geology Committee and House of Delegates*; John R. McMillan, *Industrial Advisory Committee*; W. R. Moran, *Mineral Economics Symposium Committee*; Anthony E. L. Morris, *Publication Committee*; Siegfried Museig, *Associate Chairman, Mineral Economics Symposium Committee*; George Pichel, *Industrial Advisory Committee*; David W. Shoemaker, *House of Delegates*; Arthur O. Spaulding, *Environmental Geology Committee*.

Menlo Park: Robert D. Carter, *Stratigraphic Correlations Committee*; Irvin L. Tailleir, *Stratigraphic Correlations Committee*.

Oildale: Robert C. Blaisdell, *House of Delegates*; Leon J. Earnest, *House of Delegates*.

Pacific Palisades: J. D. Traxler, *Membership Committee*.

Palos Verdes Pen.: John N. Terpening, *Committee on Computer Applications to Geology*.

Piedmont: Robert E. Daniel, *Industrial Advisory Committee*; J. Donald Weir, *Representatives in American Geological Institute House of Representatives*.

Placentia: Rodney G. Colvin, *Membership Committee*.

Sacramento: Gordon Oakeshott, *House of Delegates and Chairman, Distinguished Lecture Committee*.

San Diego: Robert F. Dill, *Marine Geology Committee*; David G. Moore, *Marine Geology Committee*.

San Francisco: Ian Campbell, *Continuing Education Committee and Committee on Preservation of Samples and Cores*; Lawrence W. Funkhouser, *Industrial Advisory Committee*; Peter W. Gester, *Industrial Advisory Committee and House of Delegates*; S. L. Rose, *Mineral Economics Symposium Committee*.

Santa Barbara: Laurence Brundall, *Research Committee*; John C. Crowell, *Continuing Education Committee*; Donald W. Weaver, *Environmental Geology Committee*.

Saratoga: R. Maurice Tripp, *Chairman, Boy Scout Committee*.

Stanford: John W. Harbaugh, *Com-*

mittee on Computer Applications to Geology; Richard H. Jahns, *Industrial Advisory Committee*.

Studio City: John C. Hazzard, *Publications Committee*.

Tarzana: Andrew G. Alpha, *Academic Advisory Committee*.

Van Nuys: Robert R. Knapp, *Stratigraphic Correlations Committee, Membership Committee, and Committee on Statistics of Drilling*.

Ventura: Jack C. Cooper, *House of Delegates*; James C. Taylor, *House of Delegates*.

Whittier: John E. Sherborne, *Academic Advisory Committee*.

Woodland: Sargent T. Reynolds, *House of Delegates*.

Woodland Hills: Roy Wilbur Turner, *House of Delegates*.

State Board

(continued from Page 1)

"grandfather" period. Board rule 3041 provides in part:

Have a minimum of four years' experience as specified in Section 7842(a) of the Code.

During the "grandfather" period, which ended November 13, 1969, and from that time until present, the Board required all applicants for certification to have four years of engineering geology experience.

The Deputy Attorney General in the Administrative Law section informed the Board that there was a conflict between Section 7842 of the Act and a part of Board Rule 3041. Rule 3041 was adopted to implement Section 7824 which required the Board to have qualifications for the speciality equivalent to those already enacted by other agencies. One of these qualifications was four years experience in engineering geology. The Attorney General is of the opinion that this part of the regulation is illegal because Section 7842 specifically states that the experience requirement is three years. This decision is based on prior court decisions that a specific statute controls and takes precedence over a general provision covering the same subject. Also, it is well known that an administrative agency may not adopt regulations which vary or enlarge the terms of a legislative enactment. During the 1970 legislative session, the Board tried to amend Section 7842 but the legislature refused to change the requirements from three to four years.

The Board, after reading the opinion of the Deputy Attorney General, will amend the regulation to comply with Section 7842, i.e., three years, at the next meeting on December 2, 1971. A public hearing will be conducted for the purpose of receiving testimony regarding the changes in the regulations.

CALENDAR for December

S	M	T	W	T	F	S
			1	2	3	4
2.	STATE BOARD FOR REGISTRATION FOR GEOLOGISTS — Public meeting. See State Board Section for details.					
2.	COAST GEOLOGICAL SOCIETY — Noon luncheon, Dave's Deli "Quaint Hebrew" 512 E. Main St., Ventura (648-1977).					
4.	LOS ANGELES BASIN GEOLOGICAL SOCIETY — Annual Holiday-Dinner Dance. (See sec. news for details).					
6.	BAKERSFIELD COLLEGE — Biostratigraphy Seminar 7:30, Room 56, Dr. Peter J. Fisher, Whittier College, "An Ancient Submarine Canyon and Fan: The Megans Channel, Sacramento Valley."					
9.	COAST GEOLOGICAL SOCIETY — Noon luncheon, Jue's Paradise.					
9.	ALASKA GEOLOGICAL SOCIETY — Noon. Anchorage. Westward Hotel.					
13.	NORTHERN CALIFORNIA GEOLOGICAL SOCIETY — Kenneth H. Crandall "World Petroleum Congress in Moscow". 12:30 P.M. Standard Oil, 555 Market, San Francisco.					
14.	SAN JOAQUIN GEOLOGICAL SOCIETY. Art Huey "Case Histories in California using the Magnetometer to Locate Faulting."					
16.	COAST GEOLOGICAL SOCIETY — Noon luncheon, Swedish Kitchen.					
17.	COAST GEOLOGICAL SOCIETY — Christmas Dance — Women's Club at Ventura — See Coast Section for details.					
23.	ALASKA GEOLOGICAL SOCIETY — Noon. Anchorage. Westward Hotel.					
23.	COAST GEOLOGICAL SOCIETY — Noon luncheon, Casa de Soria.					
30.	COAST GEOLOGICAL SOCIETY — Noon luncheon, Dave's Deli.					

January

S	M	T	W	T	F	S
						1
10.	BAKERSFIELD COLLEGE — Biostratigraphy Seminar. 7:30, Room 56. Dr. Benjamin M. Page, Stanford University. "Ocean Crust Remnant on Land Near San Luis Obispo."					

FUTURE HAPPENINGS

MARCH 9-10

Pacific Section Convention — Bakersfield. "Pacific Coast Geology—Basis for New Exploration."

MARCH 11

Pacific Section Field Trip — "Geology and Oilfields of the West Side Central San Joaquin Valley."

APRIL 4-6

Alaska Geological Society — Anchorage. "Alaska Geology and Related Subjects."

Coast

The premier social event of the year for the CGS will be the gala Christmas Dinner/Dance, to be held December 17. So reserve this date for an evening of fun and merriment. Champagne and cocktails will be served at 7:00; dinner (top sirloin) at 8:00; dancing to the music of Frank Umbro's orchestra til 1 A.M. It all happens at the Ventura Women's Center, 3451 Foothill Rd., Ventura; cost \$15 per couple.

Mail the return portion of your announcement with check to Nick Nicholiseris, 1336 Callens Rd., Ventura. For information, call him at (805) 644-2122.

* * *

Frank Reynolds of SUN will be leaving us sometime after the first of the year, having been transferred to Houston. His leadership of the Coast Society will be missed.

* * *

Thanks go to Bob Stroud of GETTY for an interesting discussion of landslides in the Ventura Avenue Anticline, the damage done to producing wells, and remedial measures to counteract the damage.

Sacramento

NO REPORT.

PACIFIC SECTION — AMERICAN ASSOCIATION PETROLEUM GEOLOGISTS EXECUTIVE COMMITTEE

President.....RICHARD L. HESTER
(213) 249-9187
Vice President.....K. B. HALL
(805) 965-8055
Secretary.....ROBERT G. LINDBLOM
(213) 295-6361
Treasurer.....DONALD E. HALLINGER
(213) 689-3649
Past President.....JOHN F. CURRAN
(805) 965-8055
Editor.....STANLEY "ED" KARP
(805) 871-5346

NEWSLETTER STAFF

Editor.....STANLEY E. KARP
Membership Secretary.....JUDY HUGHES

ASSOCIATE EDITORS

Alaska.....DICK E. ATCHISON
(907) 272-5417
Coast.....RICHARD L. STEWART
(805) 642-0376 or 963-6404
Los Angeles.....DONALD E. HALLINGER
(213) 689-3649
Northern California.....BUD PORTER
(415) 894-5278

Northwest.....ROLAND J. BAIN
Sacramento.....(916) 481-6729
San Joaquin.....LEON J. EARNEST
(805) 399-2961

Recommended Reading.....LUCY E. BIRDSALL

NEWSLETTER of the Pacific Section—American Association Petroleum Geologists is published monthly by the Pacific Section.

Material for Publication and requests for previous copies should be addressed to STANLEY E. KARP—GEOLOGY DEPT., BAKERSFIELD COLLEGE, BAKERSFIELD, CALIF. 93305. Material received by the 15th of each month will be included in the following issue.

CHANGE OF ADDRESS, subscription and membership inquiries should be directed to MEMBERSHIP SECRETARY, PACIFIC SECTION AAPG, P. O. Box 17486, FOY STATION, Los Angeles, Ca. 90017.

Alaska

(continued from Page 1)

side by side wouldn't cover much more area than a brown bear hide, the Alaska Geological Society will sponsor a symposium on "Alaska Geology and Related Subjects." Bill Decker, general chairman and Benny De Benedetti report that several outstanding speakers have already agreed to participate. So save the dates April 4th, 5th and 6th, 1972 and you'll come.

John Levorsen, secretary, also reports that our society has grown to 330 members and that a new directory will be forthcoming, probably sometime between Fur Rondy and break-up. So you'll join.

Naturally to any casual drop-ins from outside, the Geological Society extends an Alaska-size welcome. Meetings are every second and fourth Thursday at noon and usually in the Anchorage-Westward Hotel. Don't know who our next speakers are right now though, our program chairman conservatively delayed scheduling any past Cannikin.

About the only other news seems to be that Amerada-Hess and Pennzoil are up-anchoring their exploration personnel, and Don's Hartman and Magee joined Bill Fackler at the Alaska Geological Survey. The latest reports from Al-yeska and Arctic Valley are that the slopes are now in excellent condition after considerable body-packing by numerous oil patch schussboomers with a wobble in the wedelen.

Buenos snowshoes,
DICK E. ATCHISON
Alaska Correspondent

Welcome, Dick, to the NEWSLETTER staff. With colorful reports like this, Alaska can never be considered cold and white. I've suddenly realized how close Alaska is to Bakersfield. Your report was received two days after it was written. I have been waiting 6 months for a letter from the Treasurer in Los Angeles.

Does anyone have an Alaskan-English Dictionary here in the lower 48? Please rush your copy to your schussboomer Editor — I hope that's not a nasty word.

Northwest

NO REPORT.

Los Angeles

Mark DeLisle recently left Texaco and now is a geophysicist with Pennzoil United in Los Angeles.

* * *

L. A. Basin Geological Society has announced its slate of nominations for 1972 officers.

FOR PRESIDENT

Bob Wagner (Mobil)
Bill Hunter (THUMS)

FOR VICE PRESIDENT

Ed Berg (Humble)
Craig White (Union)

FOR SECRETARY

Butch Brown (Union)
Pat Haley (Humble)

FOR TREASURER

Bill Polski (Shell)
Tom Manera (Signal)

Nominations for the four delegates and four alternates to serve from July -, 1972 to June 30, 1974 are:

DELEGATES

Roy Turner (Pennzoil United)

James Anderson (Pauley)
Doug Traxler (Signal)
Jerry Cooper (Mobil)

ALTERNATES

Don Hallinger (Pacific Lighting Serv.)

Ed Ehring (Signal)
George Pichel (Union)

The ballots were mailed out with the November meeting notice and are due back by December 3, 1971. They should be sent to:

D. E. HALLINGER
720 W. 8th Street
Los Angeles, California 90017

* * *

In the November issue of the NEWSLETTER we neglected to note that the recipient of the golf prize from H. Dawson (photo) was Bob Linblom.

Sorry Bob, we figured that everyone would know that if there was a golf prize given "ole Lindblom" would get it.

* * *

If it's not too late — don't forget the annual Holiday - Los Angeles Basin Geological Society Dinner Dance on Dec. 4.

Place — SS Princes Louise, Terminal Island.

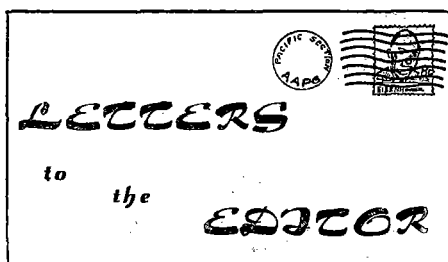
Cocktails: 7:30 p.m. (Furnished by Service Companies).

Dinner: 8:30 p.m.

Cost: \$19.00 per couple.

Music by Moonlighters.

Harbor atmosphere for this occasion should be exciting for all. Let's come and everyone make it a Happy Holiday Event. Chairman: Bob Lindblom, Standard Oil Co., LaHabra, CA 90631.



Dear Editor:

I wish to take issue and enter into a friendly but public debate on several of the statements made in the November copy of the *Newsletter* of the Pacific Section AAPG by Mr. H. Feder, President of the San Joaquin Geological Society.

Before discussing my disagreements, it is important to mention that this writer acknowledges and sincerely appreciates the long hours and hard work that Mr. Feder has devoted to the Society in past years, in particular his efforts as Vice President preparing the excellent program for last year.

I also wish to make it clear that there are points Mr. Feder makes in his editorial of which I am in total agreement. I wholeheartedly concur with him, that the make-up of the S.J.G.S. can and should be flexible enough to include persons of all the disciplines in geology and related earth sciences. The Society has many benefits to be derived from an organization with members of varied talents.

My disagreement with Mr. Feder is that . . . NO! . . . he is not wrong in believing that the S.J.G.S. has a wide range of geological talent and that the Society should be concerned with public safety.

I have been a member of the S.J.G.S. for 11 years and have observed that this Society, under the leadership of Wes Bruer, Rod Calvin, Jim O'Neil and Ernest Rennie, just to mention a few, has always been concerned in public safety as well as legislation and many other geological and public matters. The big difference is that, in years past these matters have been brought to the attention of the general membership. Special Committees were appointed to study the problems and to present results to the general membership with recommendations for appropriate action.

The general membership was then given, through parliamentary procedure, the opportunity to vote on the issue at hand.

There is another very important aspect to be considered with respect to this particular issue. Today, in Bakersfield, there are other earth science organizations such as the SEG, SEPM and AIPG who are also concerned with mutual problems such as geologic hazards, and legislation on oil regulations, building codes, etc. It is important that all

organizations work together as Assemblyman Ketchum so adequately pointed out. I also felt that Assemblyman Ketchum's comparison of geologists and farmers was very appropriate. His reference to the complacent farmer that complains about his problems but has none of his own time to help solve them. He would rather complain about them and fight among his farmer friends. Three years ago at an annual meeting of the AIPG Mr. Ketchum stated that the best lobby he has ever seen is a unified group with each and every member writing letters, sending telegrams and making personal contact to accomplish their objective.

If the S.J.G.S.'s only objective was to be a chowder and marching society, it would have died with the *Tyrannosaurus rex*. My experience as a member of this Society is exactly to the contrary. The Society has been and will continue to be every effective in the profession of geology whether it be legislation, public safety, or other geological matters.

Very truly yours,
Louis F. Villanueva
Interested Member of
The San Joaquin
Geological Society

DID YOU KNOW . . .

President Nixon announced his intention to nominate Vincent E. McKelvey to be the Director of the Geological Survey in the Department of Interior. He will succeed William T. Pecora who was appointed Under Secretary of the Interior on May 5, 1971.

Since June 1, 1971, McKelvey has been Chief Geologist of the Geological Survey. From 1969-1971 he was a research geologist with the Survey's Mineral Resource Program and from 1965-1969 he was a scientific specialist in the area of research and national program policy formulation.

Northern California

The new influx of geologist into the San Francisco Bay Area seems to be producing some problems — mostly on where to hold the society meetings. We will alternate every month between San Francisco and the Peninsula.

Dr. Richard H. Jahns spoke to the Society on November 19 at Stanford University. We hope to have an abstract of talk on the "Apollo 15 Moon Flight" in the next issue of the *NEWSLETTER*.

On December 13, Kenneth H. Crandall will report on "The World Petroleum Congress" held in Moscow. This

ALASKA MAPS AVAILABLE

Five new preliminary engineering geologic maps of part of the proposed trans-Alaska pipeline route have been released for open file inspection by the U.S. Geological Survey, Department of the Interior. These maps complement four others released earlier this summer and complete the coverage of the route.

The 800-mile pipeline project, sponsored by a group of major oil companies, would carry hot oil from Prudhoe Bay on the Arctic Ocean to the ice-free port of Valdez, on the Gulf of Alaska. It would be the first large hot-oil pipeline system ever constructed in the arctic regions.

Copies are also available for inspection at: Brooks Bldg., College, Alaska 99701; 441 Federal Bldg., Juneau, Alaska 99801; 108 Skyline Bldg., 508 nd Ave., Anchorage, Alaska 99501; 678 U.S. Court House Bldg., Spokane, Wash. 99201; 504 Custom House, San Francisco, Calif. 94111; 7638 Federal Bldg., Los Angeles, Calif. 90012; 1012 Federal Bldg., Denver, Colo. 80202; and in the offices of the Alaska Div. of Geological Survey, 509 Goldstein Bldg., Juneau, Alaska 99801; 323 E. 4th Ave., Anchorage, Alaska 99504; and University Ave., College, Alaska 99701.

A limited number of copies are available free of charge from Technical Data Unit, Alaskan Mineral Resources Branch, U.S. Geological Survey, 345 Middlefield Rd., Menlo Park, Calif. 94025.

The maps show:

- * Distribution and type of surface materials and bedrock, and description of their possible engineering characteristics.
- * Known and postulated faults in the earth's crust.
- * The presence of permafrost and susceptibility to frost action.
- * Identification of potential landslide hazards.
- * Drainage, topography, and vegetation.

The new maps cover the proposed route from the south flank of the Brooks Range, Alaska, north to the Arctic Ocean and from Big Delta, Alaska, south to the terminal site at Port Valdez on Prince William Sound, a total of about 440 miles.

meeting will be held at Standard Oil, 555 Market St., San Francisco. Time—12:30 p.m.

Thanks to Marshall G. Ayres—"Chief Cook and Bottle Washer" of the Northern California Geological Society for this report.

Change of Address

J. Q. ANDERSON
16465 Marine Dr., S.W.
Seattle, Wash. 98166

WILLIAM L. BACON
1003 Hedgepath
Hacienda Heights, Cal. 91745

M. J. CASTRO
3711 N. Harbor Blvd., Suite D
Fullerton, Cal. 92632

STANLEY D. CONRAD
12855 W. 16th Dr.
Golden, Col. 80401

MARK J. DELISLE
Pennzoil United, Inc.
1900 Ave. of the Stars
Suite 555
Los Angeles, Cal. 90067

EDWARD G. DOBRICK, JR.
311 Caravelle Dr.
Walnut Creek, Cal. 94568

ERNEST K. ESPENSCHIED
1027 Windsor Dr.
Lafayette, Cal. 94549

JOSEPH ERNST
Texaco, Inc. Rm. 235
P.O. Box 430
Bellaire, Texas 77451

J. L. FISH
P.O. Box 2385
Warner Springs, Cal. 92086

D. C. GALLEAR
9941 Star Dr.
Huntington Beach, Cal. 92646

GERALD GANOPOLE
P.O. Box 4-1261
Anchorage, Ak. 99509

JAMES W. GOURLEY
10528 S. Kibbee Ave.
Whittier, Cal. 90603

EDWARD A. HALL
c/o Union Oil Co. of Cal.
1003 Main St.
Santa Paula, Cal. 93060

TOM HAMILTON
1707 Bates Court
Thousand Oaks, Calif. 91360

JOHN L. HARPER
373 Park Ave.
Arcata, Cal. 95521

LYMAN NEAL HAYES
P.O. Box 385
Elgin, Okla. 75338

G. WM. HURLEY
314 Petroleum Bldg.
Casper, Wyo. 82601

MISS GWENN JENSEN
3945 Ingraham St.
Los Angeles, Cal. 90005

CURTIS H. JOHNSON
3029 N-Q Calle Sonora
Laguna Hills, Cal. 92653

ARMOUR KANE
4911 Fernvale Rd.
Bakersfield, Cal. 93306

JOHN G. KOCH
Std. Oil Co. of Cal.
P.O. Box 3495
San Francisco, Cal. 94120

DONALD L. LAMAR
Earth Science Research Group
1318 Second St., #27
Santa Monica, Cal. 90401

MITCHELL A. LEKAS
563 Bermuda Dr.
Concord, Cal. 94250

CRAIG A. LYON
1749 Santa Ynez Court
Concord, Cal. 94520

SAMMY G. MANOS
Indonesia Gulf Oil Co.
P.O. Box 2782
Djakarta, Indonesia

CHARLES McCULLOUGH, JR.
One Shell Plaza
P.O. Box 2463
Houston, Tx. 77001

LLOYD D. OWENS
3424 Blackhawk Rd.
Lafayette, Cal. 94549

BERNARD W. PIPKIN
P.O. Box 2391
Palos Verde Peninsula
California 90274

MORTON POLUGAR
Std. Oil Co. of Cal.
P.O. Box 3862
San Francisco, Cal. 94119

THOMAS A. ROY
Marathon Oil Co.
P.O. Box 269
Littleton, Col. 80120

JOHN W. RUTH
1000 Ridgeway
Morro Bay, Cal. 93442

JAMES O. SALVESON
Chevron Overseas Pet. Inc.
555 Market St.
San Francisco, Cal. 94105

VINCE SCURY
2509 Humble Ave.
Midland, Texas 79701

JACK R. SHEEHAN
21892 Kaneohe Lane
Huntington Beach, Cal. 92646

R. W. SHOEMAKER
10103 Groveside Ave.
Whittier, Calif. 90603

NEAL SMITH
950 Dorthel
Sebastopol, Cal. 95472

J. H. SPOTTS
Std. Oil Co. of Cal.
P.O. Box 3862
San Francisco, Cal. 94119

HOMER STEINY
400 So. Westmoreland
Los Angeles, Cal. 90020

CHARLES E. STURZ
Getty Oil Co.
3810 Wilshire Blvd.
Los Angeles, Cal. 90054

ANDREW VIDOS, JR.
335 El Medio St.
Ventura, Cal. 93001

JAMES F. VINCELETTE
Sun Oil Company
Meadow Park Central Bldg. No. II
10300 No. Central Expressway
Dallas, Texas 75231

GERALD E. WEBER
420 Lincoln St.
Santa Cruz, Cal. 95060

PAUL R. WESENDUNK
1656 E. Ardenwood Ct.
Concord, Cal. 95241

JOHN L. ZULBERTI
464 Foxenwood Dr.
Santa Maria, Cal. 93454

KENNETH S. FOX
Union Oil Co. of Cal.
Los Angeles, Cal. 90051

New Members

Only two new members to report:

ANDREW K. SCOTT
Humble Oil & Refg. Co.
1800 Ave. of the Stars
Los Angeles, Cal. 90067

CRAIG K. WHITE
9462 E. Randall Ave.
La Habra, Cal. 90631

Did You Know

John F. Matthews Jr. was appointed as California's new state oil and gas supervisor.

Matthews was chief deputy supervisor since March 1970, assumes his new duties as chief of the Division of Oil and Gas on November 2. He succeeds State Geologist Wesley G. Bruer, who has been interim supervisor since April.

Matthews, 45, joined the Division of Oil and Gas as a junior engineer in Los Angeles in 1952. He has also served in the division's Bakersfield office and was supervising engineer in Inglewood for 17 months before his appointment as chief deputy.

The straw vote regarding the name change is:

"Hang in there"	6
"Get out you bum"	1
"Don't really give a damn".....	1293

Have not heard from Jean B. Senteur de Boue as yet. He's probably still on the Pecan Punch training route, getting ready for the March Convention. Come in Jean B. wherever you are.

Preston E. Claud, Professor of Biogeology at the University of California, Santa Barbara, California, has been awarded the Paleontological Society Medal in recognition of his research in the biological aspects of earth history. The Medal was awarded during the annual meeting of the Society in Washington, D.C., on November 2, 1971.

Ted Bear and John Curran are subject to re-appointment in December to the State Board of Registration for geologists. A kind word to Governor Reagan's appointment secretary will help keep these two petroleum geologists on the Board.

Recommended Reading

U. S. GEOLOGICAL SURVEY

- Professional Paper 497-E: Geology of the compacting deposits in the Los Banos - Kettleman City subsidence area, California by R. E. Miller, J. H. Green and G. H. Davis. \$2.25
- Professional Paper 567: Dictionary of Alaska place names, by D. J. Orth (1967). Reprinted 1971. \$11.25
- Professional Paper 668: Hybrid granitoid rocks of the southern Snake Range, Nevada, by D. E. Lee and R. E. Van Loenen. \$1.25
- Professional Paper 706: Pennsylvania fusulinids from southeastern Alaska, by R. C. Douglass. 70¢
- Professional Paper 750-C: Geological Survey Research 1971, Chapter C. \$2.75
- Circular 642: Streamflow, sediment-transport, and water-temperature characteristics of three small water-

- sheds in the Alsea River basin, Oregon, by D. D. Harris and R. C. Williams. 21 pages. free
- Circular 647: Classification of public lands valuable for geothermal steam and associated geothermal resources, by L. H. Godwin, L. B. Haigler, R. L. Rioux, D. S. White, L. J. P. Muffler, and R. G. Wayland. free

MAPS:

- HA-370: Geohydrology of the Piceance Creek structural basin between the White and Colorado Rivers, northwestern Colorado, by D. L. Coffin, F. A. Welder, and R. K. Glanzman. \$1.25

SPECIAL: (USGS)

- Draft, Environmental impact statement for the geothermal leasing program in compliance with Section 102(2)(C) of the National Environmental Policy Act of 1969. Prepared by the U.S. Department of the Interior. Sept. 1971. \$2.00

- GEOLOGICAL SOCIETY OF AMERICA BULLETIN, vo. 82, no. 7, July 1971

- Origin of ridge-top depressions by large

- scale creep in the Olympic Mountains, Washington, by Rowland W. Tabor.

- Re-examination of a Miocene deep-sea fan and fan-valley, southern California, by D. J. W. Piper and W. R. Normark.

- Position of *Monograptus Uniformis* Pribyl in stratigraphic sequences in central Nevada, by W. B. N. Berry, H. Jaeger and M. A. Murphy.

ALSO RECOMMENDED—

- Fossil fuels as a source of mercury pollution, by Oliva I. Joensuu, "Science" vol. 172, 4 June 1971.

- Fossil fuel combustion and the major sedimentary cycle, by K. K. Bertine and Edward D. Goldberg "Science" vol. 173, 16 July 1971.

- Composition and devolution of the mantle and core, by Don L. Anderson, Charles Sammis, and Tom Jordan, "Science" vol. 171, 19 March 1971.

- Evolution of island arcs, by Andrew H. Mitchell and Harold G. Reading. Journal of Geology, vol. 79, no. 3, May 1971.

Season's Greetings

from the

Pacific Section

NEWSLETTER

Pacific Section A.A.P.G.

P.O. Box 17486 Foy Station

Los Angeles, California 90017